



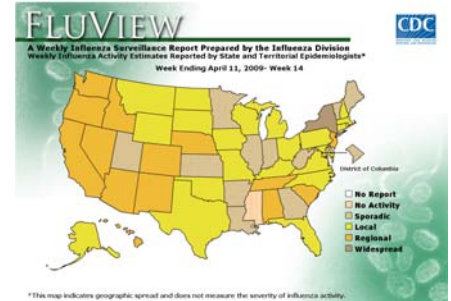
Iowa Influenza Surveillance Network (IISN)

Influenza and Other Respiratory Virus Weekly Activity Report

For the week ending April 18, 2009 Week 15

Influenza Quick Stats:

Iowa activity level: **Sporadic¹**
 Lab-confirmed cases: 2
 Sentinel % ILI²: 0.30% (threshold 2.1%)
 Hospitalizations: 1
 School % absence: 2.30% (threshold 3.06%)
 School days ≥10% absence: 2



lowa activity summary: UHL confirmed two cases of influenza B this week. Overall, influenza activity is down as well as RSV cases. RSV is now under the threshold this week (10%).

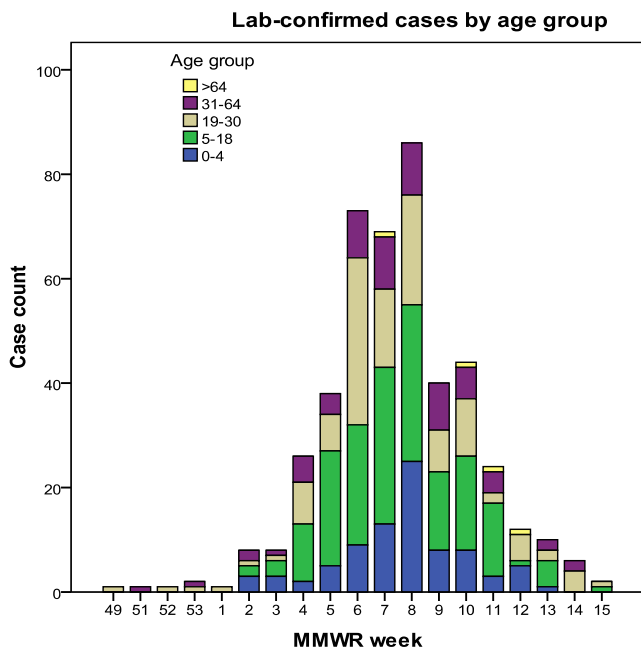
National activity summary: Widespread influenza activity was reported by one state. Regional influenza activity was reported by 14 states. Local influenza activity was reported by 22 states. Sporadic activity was reported by the District of Columbia, Puerto Rico, and 12 states. No influenza activity was reported by one state.

National virologic surveillance: WHO and NREVSS collaborating laboratories located in all 50 states and Washington D.C. report to CDC the number of respiratory specimens tested for influenza each week. The results of tests performed during the current week and cumulative totals for the season are influenza A 66.8% and influenza B 33.2%. During the 2008-09 season, influenza A (H1), A (H3), and B viruses have co-circulated in the United States. Influenza A (H1) viruses have predominated during the season overall, however, the most commonly reported influenza virus has varied by week.

Antiviral resistance: Since October 1, 2008, 748 influenza A (H1N1), 112 influenza A (H3N2), and 301 influenza B viruses have been tested for resistance to the neuraminidase inhibitors (oseltamivir and zanamivir). Seven hundred twenty-nine influenza A (H1N1) and 108 influenza A (H3N2) viruses have been tested for resistance to the adamantanes (amantadine and rimantadine). Influenza A (H1N1) viruses from 44 states and Puerto Rico have been tested for antiviral resistance to oseltamivir so far this season. To date, all influenza A (H3N2) viruses tested are resistant to the adamantanes and all oseltamivir-resistant influenza A (H1N1) viruses tested are sensitive to the adamantanes. CDC issued interim recommendations for the use of influenza antiviral medications in the setting of oseltamivir resistance among circulating influenza A (H1N1) viruses on December 19, 2008. These interim recommendations are available at <http://www2a.cdc.gov/HAN/ArchiveSys/ViewMsgV.asp?AlertNum=00279>.

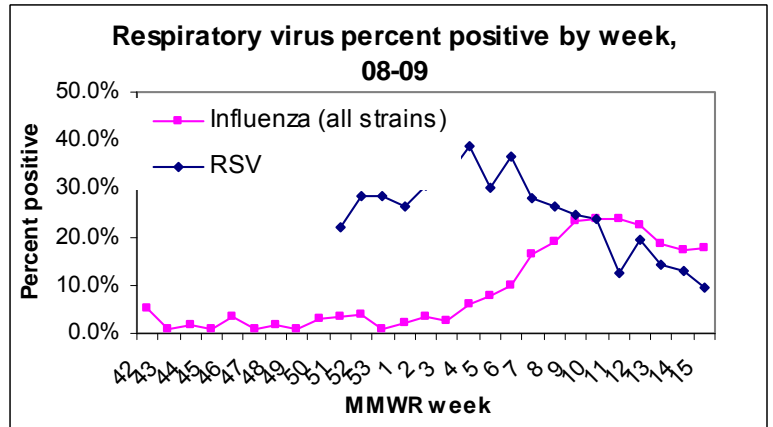
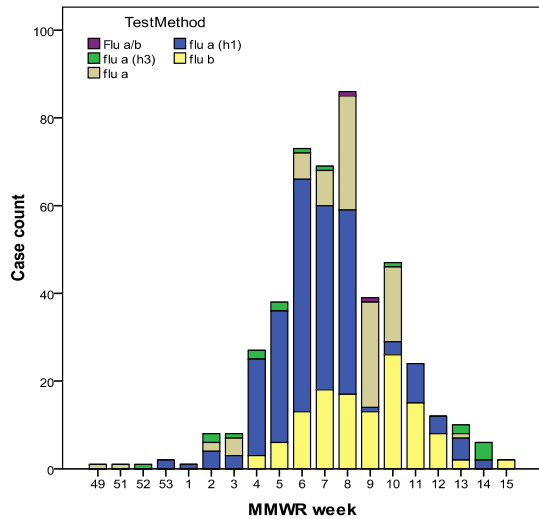
Laboratory-confirmed cases: (excludes rapid test positives; only weeks with cases are included in the table; includes several labs)

MMWR wk	flu a (h1), pcr	flu a (h3), pcr	flu a, pcr	flu a/b	flu b, pcr	Total
49	0	0	1	0	0	1
51	0	0	1	0	0	1
52	0	1	0	0	0	1
53	2	0	0	0	0	2
1	1	0	0	0	0	1
2	4	2	2	0	0	8
3	3	1	4	0	0	8
4	22	2	0	0	3	27
5	30	2	0	0	6	38
6	53	1	6	0	13	73
7	42	1	8	0	18	69
8	42	0	26	1	17	86
9	1	0	24	1	13	39
10	3	1	17	0	26	47
11	9	0	0	0	15	24
12	4	0	0	0	8	12
13	5	2	1	0	2	10
14	2	4	0	0	0	6
15	0	0	0	0	2	2
Total	223	17	90	2	123	455



¹ **No Activity:** No laboratory-confirmed cases of influenza and no reported increase in the number of cases of influenza-like illness (ILI).
Sporadic: Small numbers of laboratory-confirmed influenza cases or a single influenza outbreak has been reported, but there is no increase in cases of ILI.
Local: Outbreaks of influenza or increases in ILI cases and recent laboratory-confirmed influenza in a single region of the state.
Regional: Outbreaks of influenza or increases in ILI and recent laboratory-confirmed influenza in at least two but less than half the regions of the state.
Widespread: Outbreaks of influenza or increases in ILI cases and recent laboratory-confirmed influenza in at least half the regions of the state.
² Influenza-like illness is defined as fever ≥100°F and cough and/or sore throat.

Lab-confirmed cases by type and strain



Influenza and Other Respiratory Viral Laboratory Data:

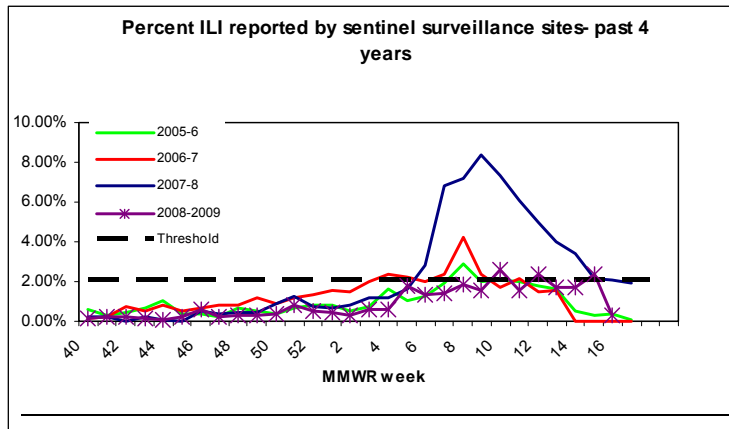
Laboratory-confirmed cases are primarily reported by the University Hygienic Laboratory (UHL) only. UHL also determines the type and strain (AH1, AH3). Influenza is not a required reportable disease. Laboratory data is used to confirm the presence of influenza and the types and strains circulating, not determine the exact number of cases in Iowa.

Region	INFLUENZA					RSV*		
	Tested	Flu A	Flu B	Both	% Positive	Tested	Positive	% Positive
Region 1- Boone, Calhoun, Carroll, Dallas, Greene, Grundy, Hamilton, Hardin, Jasper, Marshall, Polk, Poweshiek, Story, Tama, Warren, Webster	82	2	8	0	12.2%	22	0	0.0%
Region 2- Allamakee, Bremer, Butler, Cerro Gordo, Chickasaw, Emmet, Fayette, Floyd, Franklin, Hancock, Howard, Humboldt, Kossuth, Mitchell, Winnebago, Winneshiek, Worth, Wright	4	0	0	0	0.0%	8	2	25.0%
Region 3- Buena Vista, Cherokee, Clay, Crawford, Dickinson, Ida, Lyon, Monona, O'Brien, Osceola, Palo Alto, Plymouth, Pocahontas, Sac, Sioux, Woodbury	47	6	2	0	19.1%	12	0	0.0%
Region 4- Adair, Adams, Audubon, Cass, Clarke, Decatur, Fremont, Guthrie, Harrison, Madison, Mills, Montgomery, Page, Pottawattamie, Ringgold, Shelby, Taylor, Union	21	1	0	0	4.8%	10	0	0.0%
Region 5- Appanoose, Davis, Des Moines, Henry, Jefferson, Keokuk, Lee, Louisa, Lucas, Mahaska, Marion, Monroe, Muscatine, Van Buren, Wapello, Washington, Wayne	6	0	0	3	50.0%	11	5	45.5%
Region 6- Benton, Black Hawk, Buchanan, Cedar, Clayton, Clinton, Delaware, Dubuque, Iowa, Jackson, Johnson, Jones, Linn, Scott	454	28	57	0	18.7%	117	10	8.5%
TOTAL	614	37	68	3	17.6%	180	17	9.4%

*The CDC epidemic threshold for RSV is ~10% of all test results reported as positive. Additional RSV trends may be viewed at <http://www.cdc.gov/surveillance/nrvss/rsv/state.html>.

Outpatient Health Care Provider Influenza Surveillance (Sentinel Surveillance):

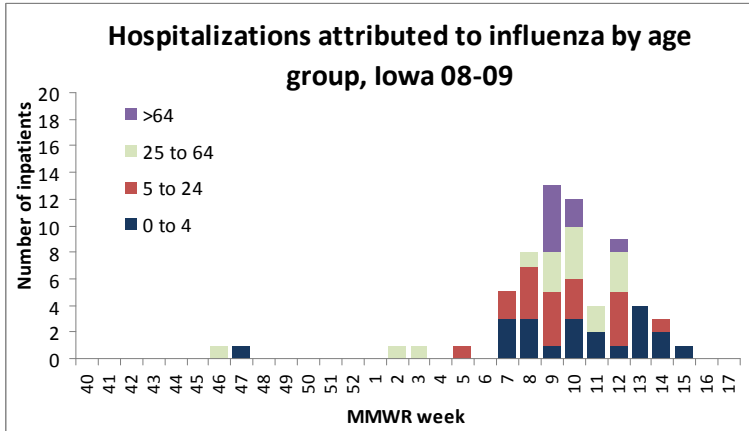
There are 18 sentinel surveillance sites throughout Iowa surveying patient populations for influenza-like illness (ILI).



# sites reporting	5
Age 0-4	1
Age 5-24	3
Age 25-64	3
Age over 64	1
Total ILI	8
Total patients	2,625
% ILI	0.30%

Hospital and Long-term Care Facility Influenza Surveillance:

There are 29 hospitals participating in influenza surveillance. Hospitals track the total number of patients hospitalized weekly with influenza and/or pneumonia who also have a positive influenza laboratory result. The total number of patients surveyed this week was 4,119.



There were no cases of influenza reported in long-term care facilities.

School Illness Surveillance:

There are approximately 50 school sites reporting into the IISN. All sites track the average number of students enrolled and the number absent due to illness weekly. One school reported absence greater than 10%.

Number of sites reporting	13
Total students surveyed	8,819
Total absences due to illness	1,096
Average percent absence due to illness	2.30%
Median percent absence due to illness	2.54%
2007-2008 percent absence due to illness same week	2.00%

