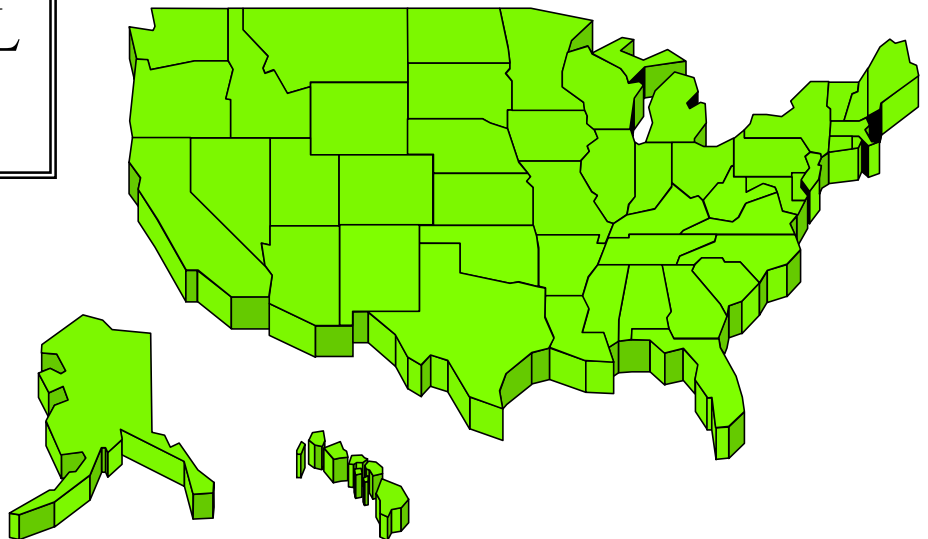
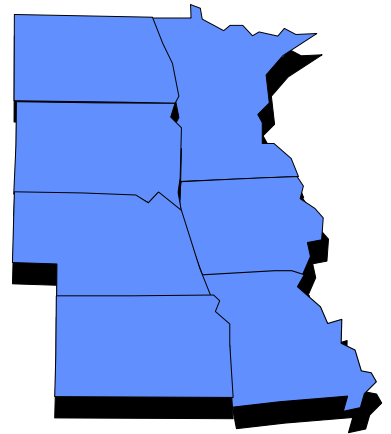
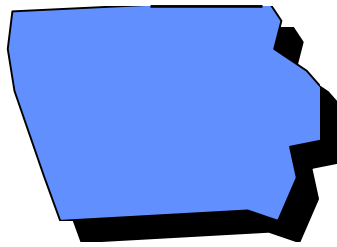


2000 RATE COMPARISONS

IOWA

REGIONAL

NATIONAL



IOWA DEPARTMENT OF PUBLIC SAFETY

PREFACE

This report describes how Iowa compares to other states in the nation. To promote consistency, the Iowa totals and the other states' information have been taken entirely from the FBI's national publication called *Crime in the United States; 2000*. The Iowa information in *Crime in the United States; 2000* is based upon actual summary totals for **selected** reporting jurisdictions and produced by the U.S. Department of Justice, F.B.I. These Iowa totals cannot be compared to the 2000 *Incident-Based Iowa Uniform Crime Reports*, which are based on actual totals for all reporting Iowa law enforcement jurisdictions.

Many factors are involved when considering crime. This document is not intended to be a complete picture of crime but an indication of crime according to the information published in *Crime in the United States; 2000*. The following excerpts have been included, partially or totally, in *Crime in the United States* for many years. The excerpts that address the issue of completeness are called Crime Factors:

“Each year when *Crime in the United States* is published, many entities - news media, tourism agencies, and other groups with an interest in crime in our nation - compile rankings of cities and counties based on their Crime Index figures. These simplistic and/or incomplete analyses often create misleading perceptions that adversely affect cities and counties, along with their residents. Assessing criminality and law enforcement's response from jurisdiction to jurisdiction must encompass many elements, some of which, while having significant impact, are not readily measurable nor applicable pervasively among all locales.”

“Historically, the causes and origins of crime have been the subjects of investigation by varied disciplines. Some factors, which are known to affect the volume and type of crime occurring from place to place, are:

- Population, density and degree of urbanization.
- Variations in composition of the population, particularly youth concentration.
- Stability of population with respect to residents' mobility, commuting patterns, and transient factors.
- Modes of transportation and highway system.
- Economic conditions, including median income, poverty level, and job availability.
- Cultural factors and educational, recreational, and religious characteristics.
- Family conditions with respect to divorce and family cohesiveness.
- Climate.
- Effective strength of law enforcement agencies.
- Administrative and investigative emphases of law enforcement.
- Policies of other components of the criminal justice system (i.e., prosecutorial, judicial, correctional, and probational).
- Citizens' attitudes toward crime.
- Crime reporting practices of the citizenry.

The Uniform Crime Reports give a nationwide view of crime based on statistics contributed by state and local law enforcement agencies. Population size is the only correlate of crime utilized in this publication. While the other factors listed above are of equal concern, no attempt is made to relate them to the data presented. The reader is, therefore, cautioned against comparing statistical data of individual reporting units from cities, counties, metropolitan areas, states, or colleges and universities solely on the basis of their population coverage or student enrollment.”

Comments and questions about this document are welcome. Correspondence should be directed to Program Services Bureau, Iowa Department of Public Safety, Wallace State Office Bldg. Des Moines, Iowa 50319-0045, telephone (515) 281-8494, or email us at ibrinfo@dps.state.ia.us.

Other issues of the comparison report may be found on the Departmental website at: www.state.ia.us/government/dps/asd/comp.htm.

**2000 CRIME RATE COMPARISONS
AS REPORTED IN
CRIME IN THE UNITED STATES**

TABLE 1. Iowa Rates and Rank for 1998, 1999 and 2000

	RATES			% chg 99-00	RANK			# chg 99-00
	1998	1999	2000		1998	1999	2000	
Crimes	3,500.6	3,224.0	3,233.7	0.3	41	41	35	-6
Index	3,500.6	3,224.0	3,233.7	0.3	41	41	35	-6
Violent	311.5	280.0	266.4	-4.8	37	38	40	2
Property	3,189.1	2,944.0	2,967.3	0.8	40	39	36	-3
Murder	1.9	1.5	1.6	4.9	47	T50	45	-5
Rape	25.4	27.2	23.1	-15.0	42	36	43	7
Robbery	50.9	36.6	36.6	-0.1	41	T42	43	1
Agg. Aslt.	233.3	214.7	205.1	-4.4	30	32	33	1
Burglary	673.7	593.0	558.4	-5.8	31	36	35	-1
Larceny	2,306.6	2,172.0	2,225.2	4.5	37	36	33	-3
M.V.T.	208.7	179.0	183.6	2.6	42	43	42	-1

Iowa's estimated total index crime rate essentially stayed the same increasing 0.3 percent from a total index crime rate of 3224.0 offenses per 100,000 estimated population in 1999 to 3233.7 in 2000.

Iowa's ranking among the 50 states dropped to 35th place in 2000 from 41st place in 1998 and 1999. The state *with the highest offense rate

ranks number one while the state with the lowest rate ranks fiftieth. In 1992 through 1994 and in 1996 there were 8 states with a lower combined rate than Iowa; in 1997 there were 11 states with a lower rate than Iowa while there were 9 states with a lower rate in 1998 and 1999 but 15 with a lower rate in 2000.

Table 1 (above) and table 2 (on page 3) demonstrate Iowa's national rank for Part 1 crimes worsened from 1999 to 2000 in four out of the seven individual crime categories. The corresponding 2000 ranking for the violent crimes of rape, robbery and aggravated assault improved in Iowa. The ranking for the crimes murder, burglary, larceny and motor vehicle theft deteriorated.

*

Data for Illinois, Kansas, Kentucky, Maine, Montana are based on estimates in 2000. Illinois, Kansas, Kentucky, Maine, Montana and New Hampshire are based on estimates in 1999. Illinois, Kansas, Kentucky, Montana, New Hampshire and Wisconsin totals are based on estimates in 1998. Illinois, Kansas, Kentucky, Montana, New Hampshire and Vermont are based on estimates in 1997. Kansas, Illinois, Montana, and Kentucky totals are based on estimates in 1996. Kansas, Illinois and Montana totals are based on estimates in 1994 and 1995. The 1993 data for Kansas and Illinois was also estimated.

TABLE 2
IOWA, NUMBER OF CRIMES, CRIME RATE AND NATIONAL RANK (1 IS HIGHEST)
1991 - 2000

		1991	1992	1993	1994	1995	1996	1997	1998	1999	2000
TOTAL	N	115,546	111,275	108,239	103,389	116,575	104,067	108,827	100,188	92,497	94,630
CRIME *	RATE	4,134.0	3,957.1	3,846.4	3,654.6	4,101.9	3,648.9	3,815.8	3,500.6	3,224.0	3,233.7
	RANK	41	42	42	42	40	42	39	41	41	35
VIOLENT	N	8,477	7,816	9,159	8,914	10,071	7,771	8,841	8,916	8,034	7,796
CRIME	RATE	303.3	278	325.5	315.1	354.4	272.5	310.0	311.5	280.0	266.4
	RANK	39	41	38	38	38	40	39	37	38	40
PROPERTY	N	107,069	103,459	99,080	94,475	106,504	96,296	99,986	91,272	84,463	86,834
CRIME	RATE	3,830.7	3,679.2	3,521.0	3,339.5	3,747.5	3,376.4	3,505.8	3,189.1	2,944.0	2,967.3
	RANK	42	42	43	42	38	41	38	40	39	36
MURDER	N	57	44	66	47	51	53	52	54	43	46
	RATE	2	1.6	2.3	1.7	1.8	1.9	1.8	1.9	1.5	1.6
	RANK	46	49	47	46	T49	T48	46	47	T50	45
RAPE	N	583	528	686	666	619	561	579	728	780	676
	RATE	20.9	18.8	24.4	23.5	21.8	19.7	20.3	25.4	27.2	23.1
	RANK	48	50	T48	T48	47	49	T48	42	36	43
ROBBERY	N	1,257	1,113	1,517	1,327	1,507	1,286	1,593	1,456	1,051	1,071
	RATE	45	39.6	53.9	46.9	53	45.1	55.9	50.9	36.6	36.6
	RANK	41	42	41	41	41	41	41	41	T42	43
AGGRAVATED	N	6,580	6,131	6,890	6,874	7,894	5,871	6,617	6,678	6,160	6,003
ASSAULT	RATE	235.4	218	244.8	243	277.8	205.9	232.0	233.3	214.7	205.1
	RANK	36	37	33	34	30	36	32	30	32	33
BURGLARY	N	23,267	21,197	20,562	18,872	21,527	18,954	22,003	19,282	17,012	16,342
	RATE	832.5	753.8	730.7	667.1	757.5	664.6	771.5	673.7	593.0	558.4
	RANK	38	38	38	42	38	40	28	31	36	35
LARCENY	N	79,030	77,788	73,148	70,507	78,645	71,893	71,301	66,016	62,316	65,118
	RATE	2,827.5	2,766.3	2,599.4	2,492.3	2,767.2	2,520.8	2,500.0	2,306.6	2,172.0	2,225.2
	RANK	37	33	39	37	33	37	36	37	36	33
MOTOR	N	4,772	4,474	5,370	5,096	6,332	5,449	6,682	5,974	5,135	5,374
VEHICLE	RATE	170.7	159.1	190.8	180.1	222.8	191.1	234.3	208.7	179.0	183.6
THEFT	RANK	45	44	43	44	43	42	42	42	43	42
		Rankings based on the 50 states									
		SOURCE: Crime in the United States									

IOWA - REGIONAL - U.S.

COMPARISON OF CRIME RATES, 2000

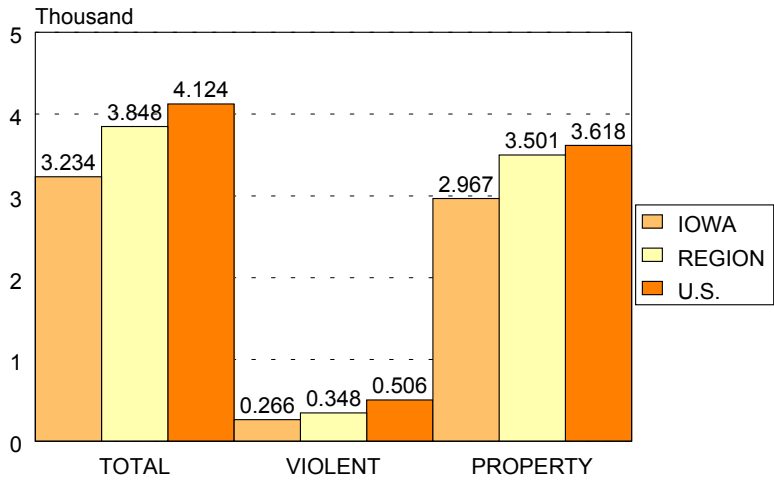


Figure 1

Source: Crime in the U.S. 2000

Iowa's crime rates are lower than both the U.S. and Regional Part I crime rates, total index, violent and property crimes are featured above. The state of Iowa is included in the West North Central Region along with Kansas, Minnesota, Missouri, Nebraska, North Dakota, and South Dakota. Although diminishing, Iowa's 2000 crime rates were below every regional offense rate and were also lower than every corresponding national Part I offense rate.

CRIME INDEX	
Violent Crimes	Property Crimes
Murder	Burglary
Forcible Rape	Larceny
Robbery	Motor Veh. Theft
Aggravated Ast.	

STATES IN THE REGION	
TOTAL INDEX	
Iowa	3,233.7
Kansas	4,408.8
Minnesota	3,488.4
Missouri	4,527.8
Nebraska	4,095.5
North Dakota	2,281.1
South Dakota	2,319.8

STATES BETWEEN	
2 AND 3 MILLION POP.	
Iowa	3,233.7
Kansas	4,408.8
Mississippi	4,004.4
Arkansas	4,115.3
Utah	4,476.1

Crime Index Rates per

100,000 population

Table 3 and Figure 1 show that Iowa's index total rate for 2000 was 3233.7 offenses per 100,000 estimated population whereas the regional rate was 3,848.7. Iowa's index rate was sixteen percent less than (or 84 percent of) the regional rate and twenty-two percent less (or 78 percent of) the U.S. rate of 4,124.0 offenses per 100,000 population.

The sharpest contrast between Iowa crime rates on the one hand and regional or national rates on the other hand was in the categories of murder and robbery. In 2000, the state murder rate of 1.6 per 100,000 population was 61 percent less than the regional rate of 4.1. When Iowa was compared to national rates in 2000 the greatest difference occurred in murder also with Iowa's rate being 71 percent less than the national rate of 5.5 offenses per 100,000 population. Iowa's robbery rate of 36.6 followed closely behind, being 55 percent less than the regional rate of 81.9 and 75 percent less than the national rate of 144.9 offenses per 100,000 estimated population.

With the ranking of 33rd among the 50 states, Iowa's 2000 estimated larceny rate of 2,225.2 was 86 percent (or 14 percent less) of the 2,577.0 regional rate. Since 1976, larceny in 1989 was the only Iowa rate to exceed the corresponding regional rates. Iowa's larceny rate is 90 percent of the corresponding national rate of 2475.3 offenses per 100,000 population, and the rate is also nearest to the national rate of any index crime recorded in 2000.

The 2000 rate nearest the regional rate was not larceny but both the burglary and aggravated assault rates were closer. Iowa's aggravated assault rate of 205.1 was 89 percent (or 11 percent less) than the 2000 regional rate of 229.4. The 2000 burglary rate in Iowa was 558.4 or also 89 percent of the regional rate, 627.7.

The estimated violent crime rate figure for 2000 shows that 10 other states had lower rates than Iowa, an improvement from 13 other states having a better rate in 1998 but a decline from 1992 when 9 other states had a better rate. Although the violent crime rate had been rising in 1997 and 1998, decreases in 1999 and 2000 reflect that Iowa still enjoys a very favorable position. Compared to the region Iowa's rate of 266.4 is 23 percent less than the regional rate of 347.7. The 2000 violent crime rate for Iowa was 47 percent less than the U.S. rate of 506.1 offenses per 100,000 population.

TABLE 3

IOWA - REGIONAL - U.S.

COMPARISON OF CRIME RATES

2000

				IOWA RATE	IOWA RATE	IOWA
				AS % OF	AS % OF	RANK
OFFENSE	IOWA	REGION *	U.S. RATE	REG. RATE	U.S. RATE	IN U.S.
INDEX						
TOTAL	3,233.7	3,848.7	4,124.0	84%	78%	35
VIOLENT						
CRIME	266.4	347.7	506.1	77%	53%	40
PROPERTY						
CRIME	2,967.3	3,501.0	3,617.9	85%	82%	36
MURDER	1.6	4.1	5.5	39%	29%	45
RAPE	23.1	32.2	32.0	72%	72%	43
ROBBERY	36.6	81.9	144.9	45%	25%	43
ASSAULT	205.1	229.4	323.6	89%	63%	33
BURGLARY	558.4	627.7	728.4	89%	77%	35
LARCENY	2,225.2	2,577.0	2,475.3	86%	90%	33
M VEH						
THEFT	183.6	296.3	414.2	62%	44%	42
* The West North Central Region includes Iowa, Kansas, Minnesota, Missouri, Nebraska, North Dakota, and South Dakota.						

During 2000, Iowa had a reported property crime rate of 2967.3 offenses per 100,000 population giving the state a ranking of 36th among the 50 states. This rate was 15 percent less than the regional property crime rate of 3501.0 and 18 percent less than the U.S. rate of 3617.9.

Iowa's murder rate (1.6) in 2000 was ranked 45th. In 1999 with a rate of 1.5 Iowa's ranking was 50 tying with New Hampshire as having the lowest ranking in the nation. The murder rate in 1998 was 1.9 per 100,000 population with Iowa ranking 47th in the nation. Iowa's rate in 1997 was 1.8 per 100,000 population, but 46th in the ranking.

The reported rates of forcible rape in Iowa increased from 20.3 in 1997 to 27.2 rapes per 100,000 population in 1999. The rate increase was also reflected in Iowa's ranking falling from two states having a better rate in 1997 to fourteen states having a better ranking in 1999. In 2000 Iowa's rate of 23.1 returned to a ranking of 43rd. Iowa's 2000 reported rape rate of 23.1 was 18 percent less than the regional rate of 32.2 and the U.S. rate of 32.0 rapes per 100,000 population.

As stated above, the Iowa aggravated assault rate of 205.1 per 100,000 population was 11 percent less but closest to any estimated individual regional crime index rate in 2000. The rate placed Iowa 33rd among the 50 states and was 37 percent less than the U.S. rate of 323.6. The 1998 ranking was tied with the 1995 ranking of 30th, the poorest in 10 years. The best ranking between 1991 and 2000 was in 1992 when a rate of 218.0 placed Iowa in 37th place.

The 2000 burglary rate of 558.4 for Iowa resulted in a ranking of 35th among the 50 states. The 2000 burglary rate decreased but worsened Iowa's ranking one position. However, Iowa's ranking for burglary in 1997 was 28th in the nation. In 2000, Iowa's burglary rate was 11 percent less than the regional rate of 627.7 and 23 percent less than the U.S. rate of 728.4 offenses per 100,000 population.

Iowa's motor vehicle theft rate for 1996, 1997, 1998 and 2000 was ranked 42nd compared to 43rd in 1995 and 1999. The reported 2000 motor vehicle theft rate of 183.6 in Iowa was 56 percent less than the U.S. rate of 414.2 and 38 percent less than the regional rate of 296.3 thefts per 100,000 population.

There is no actual or estimated individual state information provided by the FBI for the number of arsons recorded for each year. The national rate of 36.9 is based on 8,023 reporting agencies throughout the U.S.

TABLE 4
IOWA - REGIONAL - U.S. COMPARISON
CRIME INDEX RATE
1991 - 2000

YEAR	IOWA	REGION	U.S.	Iowa's Rate as % of REG. Rate	Iowa's Rate as % of U.S. Rate
1991	4,134.0	4,721.7	5,897.8	87.6	70.1
1992	3,957.1	4,594.0	5,660.2	86.1	69.9
1993	3,846.4	4,454.4	5,482.9	86.4	70.2
1994	3,654.6	4,495.6	5,374.4	81.3	68.0
1995	4,101.9	4,561.5	5,277.6	89.9	77.7
1996	3,648.9	4,424.1	5,078.9	82.5	71.8
1997	3,815.8	4,342.6	4,922.7	87.9	77.5
1998	3,500.6	4,233.2	4,615.5	82.7	75.8
1999	3,224.0	3,912.1	4,266.8	82.4	75.6
2000	3,233.7	3,848.7	4,124.0	84.0	78.4
% CHANGE, 1991-2000	-21.78	-18.49	-30.08		
% CHANGE, 1996-2000	-11.40	13.01	-18.80		
% CHANGE, 1999-2000	0.30	-1.62	-3.35		

Table 4 and Figure 2 illustrate the trend in total index crime rates for Iowa, its region and the U.S. between 1991 and 2000. Iowa's estimated crime rate for 2000 was 78 percent of the U.S. crime rate while 84 percent of the regional crime rate.

IOWA - REGIONAL - U.S. TREND COMPARISON

TOTAL INDEX CRIME RATES

1991 - 2000

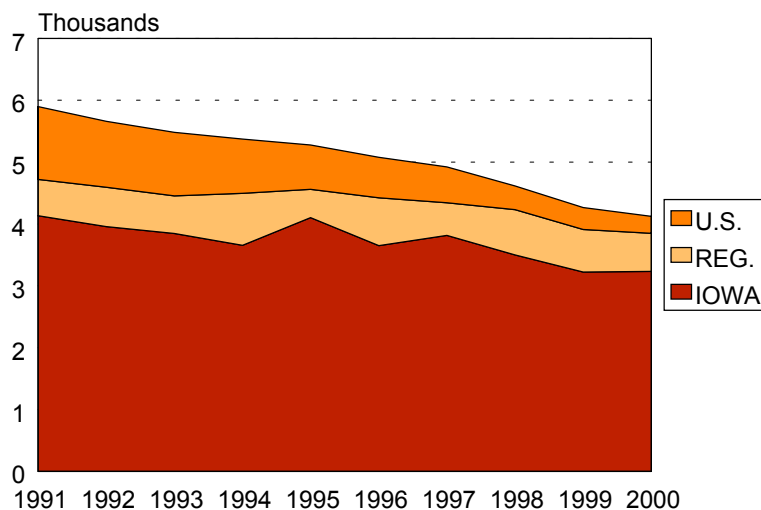


Figure 2

Figure 2 shows that Iowa, its region and the U.S. total index crime rates are generally decreasing. The U.S. shows the highest rate of decline, 30.08 percent, between 1991 and 2000 and between 1996 and 2000 (18.80 percent). Although the U.S. also shows the largest rate of decline from 1999 and 2000, Iowa, its region and the U.S. all had a similar percentage of decline (.3 to 3.35 percent) between 1999 and 2000. The Iowa crime index rate peaked in 1991 and 1995, while the U.S. and the regional rates as a whole peaked in 1991.

TABLE 5
IOWA - REGIONAL - U.S. COMPARISON
VIOLENT CRIME RATE
1991 - 2000

YEAR	IOWA	REGION	U.S.	Iowa's Rate as % of REG. Rate	Iowa's Rate as % of U.S. Rate
1991	303.3	456.6	758.1	66.4	40.0
1992	278.0	455.5	757.5	61.0	36.7
1993	325.5	459.3	746.1	70.9	43.6
1994	315.1	468.2	716.0	67.3	44.0
1995	354.4	441.1	684.6	80.3	52.0
1996	272.5	405.5	634.1	67.2	43.0
1997	310.0	407.9	610.8	76.0	50.8
1998	311.5	392.9	566.4	79.2	55.0
1999	280.0	358.8	524.7	78.0	53.4
2000	266.4	347.7	506.1	76.6	52.6
% CHANGE, 1991 -2000	-12.2	-23.9	-33.2		
% CHANGE, 1996 -2000	-2.2	-14.3	-20.2		
% CHANGE, 1999 -2000	-4.9	-3.1	-3.5		

The trends in violent crime rates for Iowa, its region and the U.S. are depicted in Table 5 and Figure 3. These illustrate that Iowa's violent crime rate, although it had been generally increasing to 1995, has been much lower than the U.S. and regional violent crime rate between 1991 and 2000. Iowa's rate of violent offenses per estimated 100,000 population has ranged between 37 and 55 percent of the U.S. violent crime rate, while being 61 to 80 percent of the regional rate.

IOWA - REGIONAL - U.S. TREND COMPARISON

VIOLENT INDEX CRIME RATES

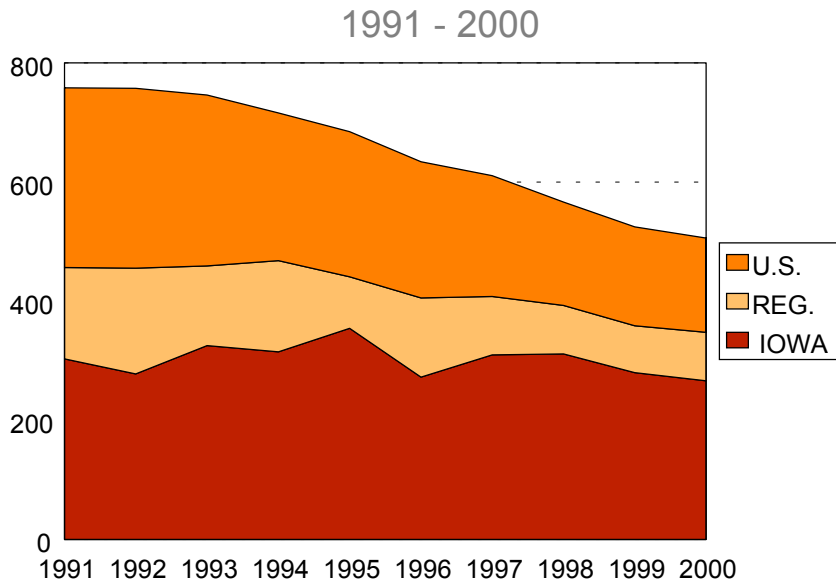


Figure 3

Peaking in 1991, the national violent crime rate decreased faster between 1991 and 2000 than the corresponding Iowa or regional rate. Iowa's rate decreased 12.2 percent between 1991 and 2000; the regional rate decreased 23.9 percent, while the U.S. recorded an overall 33.2 percent decrease. Although Iowa's violent crime rate decreased less than the regional and national rate, the ranking among the 50 states was 39th in 1991 but improved to 40th in 2000. The period best ranking was 41st in 1992. Iowa ranked 38th in 1993 through 1995 and in 1999 but 37th in 1998 and 40th in 1996 as well as in 2000.

TABLE 6
IOWA - REGIONAL - U.S. COMPARISON
PROPERTY CRIME RATE
1991 - 2000

YEAR	IOWA	REGION	U.S.	Iowa's Rate as % of REG. Rate	Iowa's Rate as % of U.S. Rate
1991	3,830.7	4,265.1	5,139.7	89.8	74.5
1992	3,679.2	4,138.5	4,902.7	88.9	75.0
1993	3,521.0	3,995.1	4,736.9	88.1	74.3
1994	3,339.5	4,027.4	4,658.3	82.9	71.7
1995	3,747.5	4,120.4	4,593.0	90.9	81.6
1996	3,376.4	4,018.6	4,444.8	84.0	76.0
1997	3,505.8	3,934.7	4,311.9	89.1	81.3
1998	3,189.1	3,840.3	4,049.1	83.0	78.8
1999	2,944.0	3,553.3	3,742.1	82.9	78.7
2000	2,967.3	3,501.0	3,617.9	84.8	82.0
% CHANGE, 1991 -2000	-22.54	-17.90	-29.60		
% CHANGE, 1996 -2000	-12.12	-12.88	18.60		
% CHANGE, 1999 -2000	0.79	-1.47	-3.34		

The trends in property crime rates for Iowa, its region and the U.S. are depicted in Table 6 and figure 4. The rates show that Iowa's property crime rate has improved from 90 percent of the regional rate in 1991 to 85 percent of the regional rate in 2000.

IOWA - REGIONAL - U.S. TREND COMPARISON

PROPERTY INDEX CRIME RATES

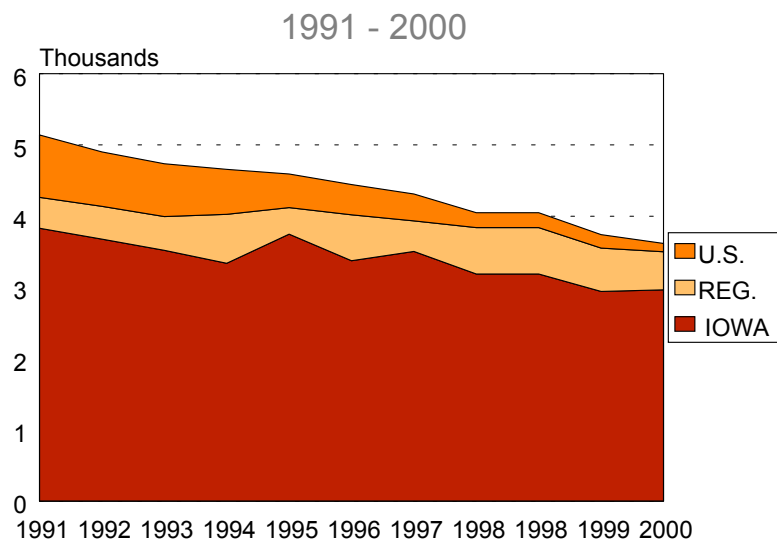


Figure 4

However, Iowa's property crime rates diminished from 75 percent of the U.S. crime rate in 1991 to 82 percent of the U.S. rate in 2000. (The U.S. crime rate decreased 30 percent overall between 1991 and 2000 and the regional property crime rate decreased 18 percent. Iowa's property rate decreased more than 22 percent overall during those years.)

REPORTED INDEX CRIMES AND CRIME RATES, BY STATE, 2000										
STATE	POPULATION	CRIME INDEX			VIOLENT			PROPERTY		
		TOTAL								
		NUMBER	RATE	RANK	NUMBER	RATE	RANK	NUMBER	RATE	RANK
Arizona	5,130,632	299,092	5829.5	1	27,281	531.7	14	271,811	5297.8	1
Florida	15,982,378	910,154	5694.7	2	129,777	812.0	1	780,377	4882.7	3
New Mexico	1,819,046	100,391	5518.9	3	13,786	757.9	4	86,605	4761.0	4
Louisiana	4,468,976	242,344	5422.8	4	30,440	681.1	7	211,904	4741.7	5
South Carolina	4,012,012	209,482	5221.4	5	32,293	804.9	2	177,189	4416.5	9
Hawaii	1,211,537	62,987	5198.9	6	2,954	243.8	43	60,033	4955.1	2
Washington	5,894,121	300,932	5105.6	7	21,788	369.7	26	279,144	4736.0	6
Texas	20,851,820	1,033,311	4955.5	8	113,653	545.1	13	919,658	4410.4	10
North Carolina	8,049,313	395,972	4919.3	9	40,051	497.6	18	355,921	4421.8	8
Tennessee	5,689,283	278,218	4890.2	10	40,233	707.2	5	237,985	4183.0	13
Oregon	3,421,399	165,780	4845.4	11	12,000	350.7	28	153,780	4494.7	7
Maryland	5,296,486	255,085	4816.1	12	41,663	786.6	3	213,422	4029.5	17
Georgia	8,186,453	388,949	4751.1	13	41,319	504.7	16	347,630	4246.4	11
Oklahoma	3,450,654	157,302	4558.6	14	17,177	497.8	17	140,125	4060.8	14
Alabama	4,447,100	202,159	4545.9	15	21,620	486.2	20	180,539	4059.7	15
Missouri	5,595,211	253,338	4527.8	16	27,419	490.0	19	225,919	4037.7	16
Delaware	783,600	35,090	4478.1	17	5,363	684.4	6	29,727	3793.6	19
Utah	2,233,169	99,958	4476.1	18	5,711	255.7	41	94,247	4220.3	12
Kansas	2,688,418	118,527	4408.8	19	10,470	389.4	24	108,057	4019.4	18
Illinois	12,419,293	532,315	4286.2	20	81,567	656.8	8	450,748	3629.4	27
Nevada	1,998,257	85,297	4268.6	21	10,474	524.2	15	74,823	3744.4	21
Alaska	626,932	26,641	4249.4	22	3,554	566.9	10	23,087	3682.5	23
Arkansas	2,673,400	110,019	4115.3	23	11,904	445.3	22	98,115	3670.0	24
Michigan	9,938,444	408,456	4109.9	24	55,159	555.0	11	353,297	3554.9	28
Nebraska	1,711,263	70,085	4095.5	25	5,606	327.6	32	64,479	3767.9	20
Ohio	11,353,140	458,874	4041.8	26	37,935	334.1	30	420,939	3707.7	22
Mississippi	2,844,658	113,911	4004.4	27	10,267	360.9	27	103,644	3643.5	26
Colorado	4,301,261	171,304	3982.6	28	14,367	334.0	31	156,937	3648.6	25
Indiana	6,080,485	228,135	3751.9	29	21,230	349.1	29	206,905	3402.8	29
California	33,871,648	1,266,714	3739.7	30	210,531	621.6	9	1,056,183	3118.2	33
Montana	902,195	31,878	3533.4	31	2,171	240.6	44	29,707	3292.7	30
Minnesota	4,919,479	171,611	3488.4	32	13,813	280.8	38	157,798	3207.6	31
Rhode Island	1,048,319	36,444	3476.4	33	3,121	297.7	35	33,323	3178.7	32
Wyoming	493,782	16,285	3298.0	34	1,316	266.5	39	14,969	3031.5	34
IOWA	2,926,324	94,630	3233.7	35	7,796	266.4	40	86,834	2967.3	36
Connecticut	3,405,565	110,091	3232.7	36	11,058	324.7	33	99,033	2908.0	38
Wisconsin	5,363,675	172,124	3209.1	37	12,700	236.8	45	159,424	2972.3	35
Idaho	1,293,953	41,228	3186.2	38	3,267	252.5	42	37,961	2933.7	37
New Jersey	8,414,350	265,935	3160.5	39	32,298	383.8	25	233,637	2776.6	40
New York	18,976,457	588,189	3099.6	40	105,111	553.9	12	483,078	2545.7	45
Virginia	7,078,515	214,348	3028.1	41	19,943	281.7	37	194,405	2746.4	41
Massachusetts	6,349,097	192,131	3026.1	42	30,230	476.1	21	161,901	2550.0	44
Pennsylvania	12,281,054	367,858	2995.3	43	51,584	420.0	23	316,274	2575.3	43
Vermont	608,827	18,185	2986.9	44	691	113.5	48	17,494	2873.4	39
Kentucky	4,041,769	119,626	2959.7	45	11,903	294.5	36	107,723	2665.2	42
Maine	1,274,923	33,400	2619.8	46	1,397	109.6	49	32,003	2510.2	46
West Virginia	1,808,344	47,067	2602.8	47	5,723	316.5	34	41,344	2286.3	47
New Hampshire	1,235,786	30,068	2433.1	48	2,167	175.4	46	27,901	2257.8	48
South Dakota	754,844	17,511	2319.8	49	1,259	166.8	47	16,252	2153.0	50
North Dakota	642,200	14,694	2288.1	50	523	81.4	50	14,171	2206.6	49

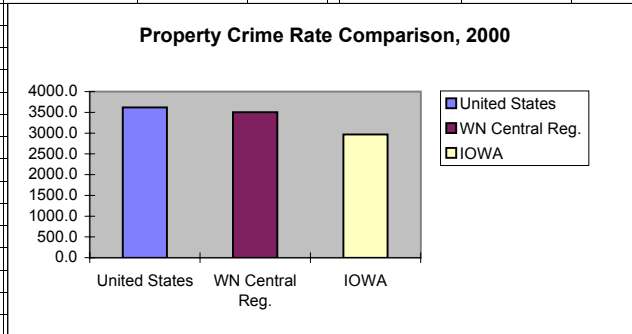
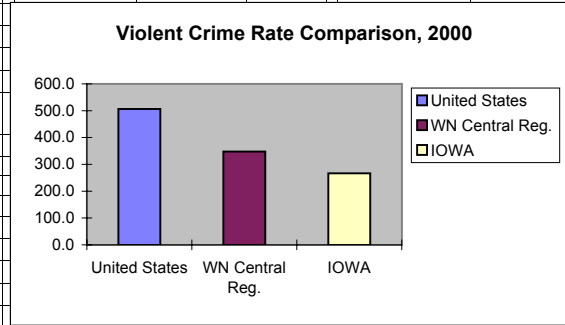
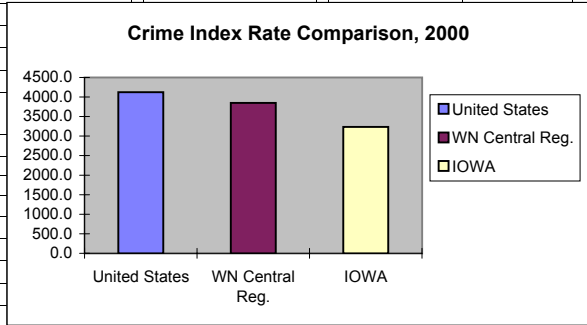
REPORTED VIOLENT INDEX CRIMES AND CRIME RATES BY STATE, 2000

STATE	POPULATION	VIOLENT INDEX			MURDER			RAPE			ROBBERY			AGGRAVATED ASSAULT		
		TOTAL			NUMBER	RATE	RANK	NUMBER	RATE	RANK	NUMBER	RATE	RANK	NUMBER	RATE	RANK
		NUMBER	RATE	RANK												
Florida	15,982,378	129,777	812.0	1	903	5.6	21	7,057	44.2	7	31,809	199.0	5	90,008	563.2	2
South Carolina	4,012,012	32,293	804.9	2	233	5.8	18	1,511	37.7	18	5,883	146.6	14	24,666	614.8	1
Maryland	5,296,486	41,663	786.6	3	430	8.1	3	1,543	29.1	30	13,560	256.0	1	26,130	493.3	5
New Mexico	1,819,046	13,786	757.9	4	135	7.4	5	922	50.7	3	2,499	137.4	19	10,230	562.4	3
Tennessee	5,689,283	40,233	707.2	5	410	7.2	7	2,186	38.4	15	9,465	166.4	9	28,172	495.2	4
Delaware	783,600	5,363	684.4	6	25	3.2	32	424	54.1	2	1,394	177.9	6	3,520	449.2	7
Louisiana	4,468,976	30,440	681.1	7	560	12.5	1	1,497	33.5	22	7,532	168.5	8	20,851	466.6	6
Illinois	12,419,293	81,567	656.8	8	891	7.2	8	4,090	32.9	25	25,758	207.4	4	50,828	409.3	8
California	33,871,648	210,531	621.6	9	2079	6.1	16	9,785	28.9	32	60,249	177.9	7	138,418	408.7	9
Alaska	626,932	3,554	566.9	10	27	4.3	26	497	79.3	1	490	78.2	33	2,540	405.1	10
Michigan	9,938,444	55,159	555.0	11	669	6.7	11	5,025	50.6	4	13,712	138.0	17	35,753	359.7	12
New York	18,976,457	105,111	553.9	12	952	5.0	23	3,530	18.6	48	40,539	213.6	3	60,090	316.7	19
Texas	20,851,820	113,653	545.1	13	1238	5.9	17	7,856	37.7	17	30,257	145.1	16	74,302	356.3	13
Arizona	5,130,632	27,281	531.7	14	359	7.0	9	1,577	30.7	28	7,504	146.3	15	17,841	347.7	15
Nevada	1,998,257	10,474	524.2	15	1,298	6.5	12	860	43.0	8	4,543	227.3	2	4,942	247.3	24
Georgia	8,186,453	41,319	504.7	16	651	8.0	4	1,968	24.0	42	13,250	161.9	10	25,450	310.9	20
Oklahoma	3,450,654	17,177	497.8	17	182	5.3	22	1,422	41.2	11	2,615	75.8	35	12,958	375.5	11
North Carolina	8,049,313	40,051	497.6	18	560	7.0	10	2,181	27.1	34	12,595	156.5	12	24,715	307.0	21
Missouri	5,595,211	27,419	490.0	19	347	6.2	15	1,351	24.1	41	7,598	135.8	20	18,123	323.9	17
Alabama	4,447,100	21,620	486.2	20	329	7.4	6	1,482	33.3	24	5,702	128.2	21	14,107	317.2	18
Massachusetts	6,349,097	30,230	476.1	21	125	2.0	41	1,696	26.7	36	5,815	91.6	27	22,594	355.9	14
Arkansas	2,673,400	11,904	445.3	22	168	6.3	14	848	31.7	27	2,001	74.8	37	8,887	332.4	16
Pennsylvania	12,281,054	51,584	420.0	23	602	4.9	24	3,247	26.4	37	18,155	147.8	13	29,580	240.9	25
Kansas	2,688,418	10,470	389.4	24	169	6.3	13	1,022	38.0	16	2,048	76.2	34	7,231	269.0	22
New Jersey	8,414,350	32,298	383.8	25	289	3.4	30	1,357	16.1	50	13,553	161.1	11	17,099	203.2	35
Washington	5,894,121	21,788	369.7	26	196	3.3	31	2,737	46.4	5	5,812	98.6	24	13,043	221.3	28
Mississippi	2,844,658	10,267	360.9	27	255	9.0	2	1,019	35.8	21	2,703	95.0	25	6,290	221.1	29
Oregon	3,421,399	12,000	350.7	28	70	2.0	40	1,286	37.6	20	2,888	84.4	31	7,756	226.7	27
Indiana	6,080,485	21,230	349.1	29	352	5.8	19	1,759	28.9	31	6,282	103.3	23	12,837	211.1	32
Ohio	11,353,140	37,935	334.1	30	418	3.7	28	4,271	37.6	19	15,610	137.5	18	17,636	155.3	43
Colorado	4,301,261	14,367	334.0	31	134	3.1	34	1,774	41.2	10	3,034	70.5	38	9,425	219.1	30
Nebraska	1,711,263	5,606	327.6	32	63	3.7	29	436	25.5	39	1,147	67.0	39	3,960	231.4	26
Connecticut	3,405,565	11,058	324.7	33	98	2.9	37	678	19.9	47	3,832	112.5	22	6,450	189.4	36
West Virginia	1,808,344	5,723	316.5	34	46	2.5	38	331	18.3	49	749	41.4	41	4,597	254.2	23
Rhode Island	1,048,319	3,121	297.7	35	45	4.3	27	412	39.3	13	922	88.0	29	1,742	166.2	39
Kentucky	4,041,769	11,903	294.5	36	193	4.8	25	1,091	27.0	35	3,256	80.6	32	7,363	182.2	37
Virginia	7,078,515	19,943	281.7	37	401	5.7	20	1,616	22.8	45	6,295	88.9	28	11,631	164.3	40
Minnesota	4,919,479	13,813	280.8	38	151	3.1	35	2,240	45.5	6	3,713	75.5	36	7,709	156.7	42
Wyoming	493,782	1,316	266.5	39	12	2.4	39	160	32.4	26	70	14.2	49	1,074	217.5	31
IOWA	2,926,324	7,796	266.4	40	46	1.6	45	676	23.1	43	1,071	36.6	43	6,003	205.1	33
Utah	2,233,169	5,711	255.7	41	43	1.9	42	863	38.6	14	1,242	55.6	40	3,563	159.5	41
Idaho	1,293,953	3,267	252.5	42	16	1.2	47	384	29.7	29	223	17.2	48	2,644	204.3	34
Hawaii	1,211,537	2,954	243.8	43	35	2.9	36	346	28.6	33	1,123	92.7	26	1,450	119.7	45
Montana	902,195	2,171	240.6	44	16	1.8	44	301	33.4	23	249	27.6	44	1,605	177.9	38
Wisconsin	5,363,675	12,700	236.8	45	169	3.2	33	1,165	21.7	46	4,537	84.6	30	6,829	127.3	44
New Hampshire	1,235,786	2,167	175.4	46	22	1.8	43	522	42.2	9	453	36.7	42	1,170	94.7	47
South Dakota	754,844	1,259	166.8	47	7	0.9	49	305	40.4	12	131	17.4	47	816	108.1	46
Vermont	608,827	691	113.5	48	9	1.5	46	140	23.0	44	117	19.2	46	425	69.8	48
Maine	1,274,923	1,397	109.6	49	15	1.2	48	320	25.1	40	247	19.4	45	815	63.9	49
North Dakota	642,200	523	81.4	50	4	0.6	50	169	26.3	38	56	8.7	50	294	45.8	50

REPORTED PROPERTY INDEX CRIMES AND CRIME RATES BY STATE, 2000													
STATE	POPULATION	PROPERTY INDEX			BURGLARY			LARCENY			MOTOR VEHICLE		
		TOTAL			NUMBER	RATE	RANK	NUMBER	RATE	RANK	THEFT		
		NUMBER	RATE	RANK							NUMBER	RATE	RANK
Arizona	5,130,632	271,811	5297.8	1	51,902	1011.6	5	176,705	3444.1	2	43,204	842.1	1
Hawaii	1,211,537	60,033	4955.1	2	10,665	880.3	13	43,254	3570.2	1	6,114	504.6	8
Florida	15,982,378	780,377	4882.7	3	172,898	1081.8	3	518,298	3242.9	5	89,181	558.0	5
New Mexico	1,819,046	86,605	4761.0	4	21,339	1173.1	2	57,925	3184.4	8	7,341	403.6	19
Louisiana	4,468,976	211,904	4741.7	5	46,289	1035.8	4	144,345	3229.9	7	21,270	475.9	10
Washington	5,894,121	279,144	4736.0	6	53,476	907.3	10	190,650	3234.6	6	35,018	594.1	3
Oregon	3,421,399	153,780	4494.7	7	25,618	748.8	19	114,230	3338.7	3	13,932	407.2	17
North Carolina	8,049,313	355,921	4421.8	8	97,888	1216.1	1	232,767	2891.8	13	25,266	313.9	28
South Carolina	4,012,012	177,189	4416.5	9	38,888	969.3	7	123,094	3068.1	9	15,207	379.0	23
Texas	20,851,820	919,658	4410.4	10	188,975	906.3	12	637,522	3057.4	10	93,161	446.8	13
Georgia	8,186,453	347,630	4246.4	11	68,488	836.6	15	240,440	2937.0	12	38,702	472.8	11
Utah	2,233,169	94,247	4220.3	12	14,348	642.5	27	73,438	3288.5	4	6,461	289.3	31
Tennessee	5,689,283	237,985	4183.0	13	56,344	990.4	6	154,111	2708.8	20	27,530	483.9	9
Oklahoma	3,450,654	140,125	4060.8	14	31,661	917.5	9	96,116	2785.4	17	12,348	357.8	25
Alabama	4,447,100	180,539	4059.7	15	40,331	906.9	11	127,399	2864.8	15	12,809	288.0	32
Missouri	5,595,211	225,919	4037.7	16	41,685	745.0	20	159,539	2851.3	16	24,695	441.4	15
Maryland	5,296,486	213,422	4029.5	17	39,426	744.4	21	145,423	2745.7	18	28,573	539.5	6
Kansas	2,688,418	108,057	4019.4	18	21,484	799.1	17	80,077	2978.6	11	6,496	241.6	39
Delaware	783,600	29,727	3793.6	19	5,216	665.6	24	21,360	2725.9	19	3,151	402.1	20
Nebraska	1,711,263	64,479	3767.9	20	10,131	592.0	32	49,118	2870.3	14	5,230	305.6	29
Nevada	1,998,257	74,823	3744.4	21	17,526	877.1	14	44,125	2208.2	34	13,172	659.2	2
Ohio	11,353,140	420,939	3707.7	22	88,636	780.7	18	293,277	2583.2	25	39,026	343.7	27
Alaska	626,932	23,087	3682.5	23	3,899	621.9	31	16,838	2685.8	21	2,350	374.8	24
Arkansas	2,673,400	98,115	3670.0	24	21,443	802.1	16	69,740	2608.7	24	6,932	259.3	36
Colorado	4,301,261	156,937	3648.6	25	27,133	630.8	29	112,843	2623.5	23	16,961	394.3	21
Mississippi	2,844,658	103,644	3643.5	26	26,918	946.3	8	69,758	2452.2	28	6,968	245.0	38
Illinois	12,419,293	450,748	3629.4	27	81,913	659.6	25	312,692	2517.8	26	56,143	452.1	12
Michigan	9,938,444	353,297	3554.9	28	69,790	702.2	22	227,783	2291.9	31	55,724	560.7	4
Indiana	6,080,485	206,905	3402.8	29	41,108	676.1	23	144,707	2379.9	30	21,090	346.8	26
Montana	902,195	29,707	3292.7	30	3,946	437.4	45	23,805	2638.6	22	1,956	216.8	41
Minnesota	4,919,479	157,798	3207.6	31	26,116	530.9	38	118,250	2403.7	29	13,432	273.0	34
Rhode Island	1,048,319	33,323	3178.7	32	6,620	631.5	28	22,038	2102.2	37	4,665	445.0	14
California	33,871,648	1,056,183	3118.2	33	222,293	656.3	26	651,855	1924.5	40	182,035	537.4	7
Wyoming	493,782	14,969	3031.5	34	2,078	420.8	47	12,318	2494.6	27	573	116.0	48
Wisconsin	5,363,675	159,424	2972.3	35	25,183	469.5	42	119,605	2229.9	32	14,636	272.9	35
IOWA	2,926,324	86,834	2967.3	36	16,342	558.4	35	65,118	2225.2	33	5,374	183.6	42
Idaho	1,293,953	37,961	2933.7	37	7,330	566.5	34	28,545	2206.0	35	2,086	161.2	45
Connecticut	3,405,565	99,033	2908.0	38	17,436	512.0	40	68,498	2011.4	39	13,099	384.6	22
Vermont	608,827	17,494	2873.4	39	3,501	575.0	33	13,184	2165.5	36	809	132.9	47
New Jersey	8,414,350	233,637	2776.6	40	43,924	522.0	39	155,562	1848.8	42	34,151	405.9	18
Virginia	7,078,515	194,405	2746.4	41	30,434	429.9	46	146,158	2064.8	38	17,813	251.6	37
Kentucky	4,041,769	107,723	2665.2	42	25,308	626.2	30	73,141	1809.6	44	9,274	229.5	40
Pennsylvania	12,281,054	316,274	2575.3	43	54,080	440.4	44	225,869	1839.2	43	36,325	295.8	30
Massachusetts	6,349,097	161,901	2550.0	44	30,600	482.0	41	105,425	1660.5	49	25,876	407.6	16
New York	18,976,457	483,078	2545.7	45	87,946	463.4	43	340,901	1796.4	45	54,231	285.8	33
Maine	1,274,923	32,003	2510.2	46	6,775	531.4	37	23,906	1875.1	41	1,322	103.7	50
West Virginia	1,808,344	41,344	2286.3	47	9,890	546.9	36	28,139	1556.1	50	3,315	183.3	43
New Hampshire	1,235,786	27,901	2257.8	48	4,992	404.0	48	20,761	1680.0	47	2,148	173.8	44
North Dakota	642,200	14,171	2206.6	49	2,093	325.9	50	11,092	1727.2	46	986	153.5	46
South Dakota	754,844	16,252	2153.0	50	2,896	383.7	49	12,558	1663.7	48	798	105.7	49

REPORTED INDEX CRIMES AND CRIME RATES, 2000

AREA	POPULATION	CRIME INDEX			VIOLENT			PROPERTY		
		NUMBER	RATE	RANK*	NUMBER	RATE	RANK*	NUMBER	RATE	RANK*
United States	281,421,906	11,605,751	4124.0		1,424,289	506.1		10,181,462	3617.9	
WN Central Reg.	19,237,739	740,396	3848.7		66,886	347.7		673,510	3501.0	
IOWA	2,926,324	94,630	3233.7	36	7,796	266.4	40	86,834	2967.3	36



*ranking among the 50 states

REPORTED VIOLENT INDEX CRIMES AND CRIME RATES, 2000

AREA	POPULATION	VIOLENT INDEX TOTAL			MURDER			RAPE			ROBBERY			AGGRAVATED ASSAULT		
		NUMBER	RATE	RANK	NUMBER	RATE	RANK	NUMBER	RATE	RANK	NUMBER	RATE	RANK	NUMBER	RATE	RANK
United States	281,421,906	1,424,289	506.1		15,517	5.5		90,186	32.0		407,842	144.9		910,744	323.6	
WN Central Reg.	19,237,739	66,886	347.7		787	4.1		6,199	32.2		15,764	81.9		44,136	229.4	
IOWA	2,926,324	7,796	266.4	40	46	1.6	45	676	23.1	43	1,071	36.6	43	6,003	205.1	33

REPORTED PROPERTY INDEX CRIMES AND CRIME RATES, 2000

AREA	POPULATION	PROPERTY INDEX TOTAL			BURGLARY			LARCENY			MOTOR VEHICLE THEFT		
		NUMBER	RATE	RANK	NUMBER	RATE	RANK	NUMBER	RATE	RANK	NUMBER	RATE	RANK
United States	281,421,906	10,181,462	3617.9		2,049,946	728.4		6,965,957	2475.3		1,165,559	414.2	
WN Central Reg.	19,237,739	673,510	3501.0		120,747	627.7		495,752	2577.0		57,011	296.3	
IOWA	2,926,324	86,834	2967.3	36	16,342	558.4	35	65,118	2225.2	33	5,374	183.6	42