

FEB 26 1982

HD
4826
.I8
B54
1979/80

**IOWA BUREAU OF LABOR
BIENNIAL REPORT
1979 - 1980**



Iowa
a place to grow

IOWA BUREAU OF LABOR
BIENNIAL REPORT
1979 - 1980



Robert D. Ray, Governor

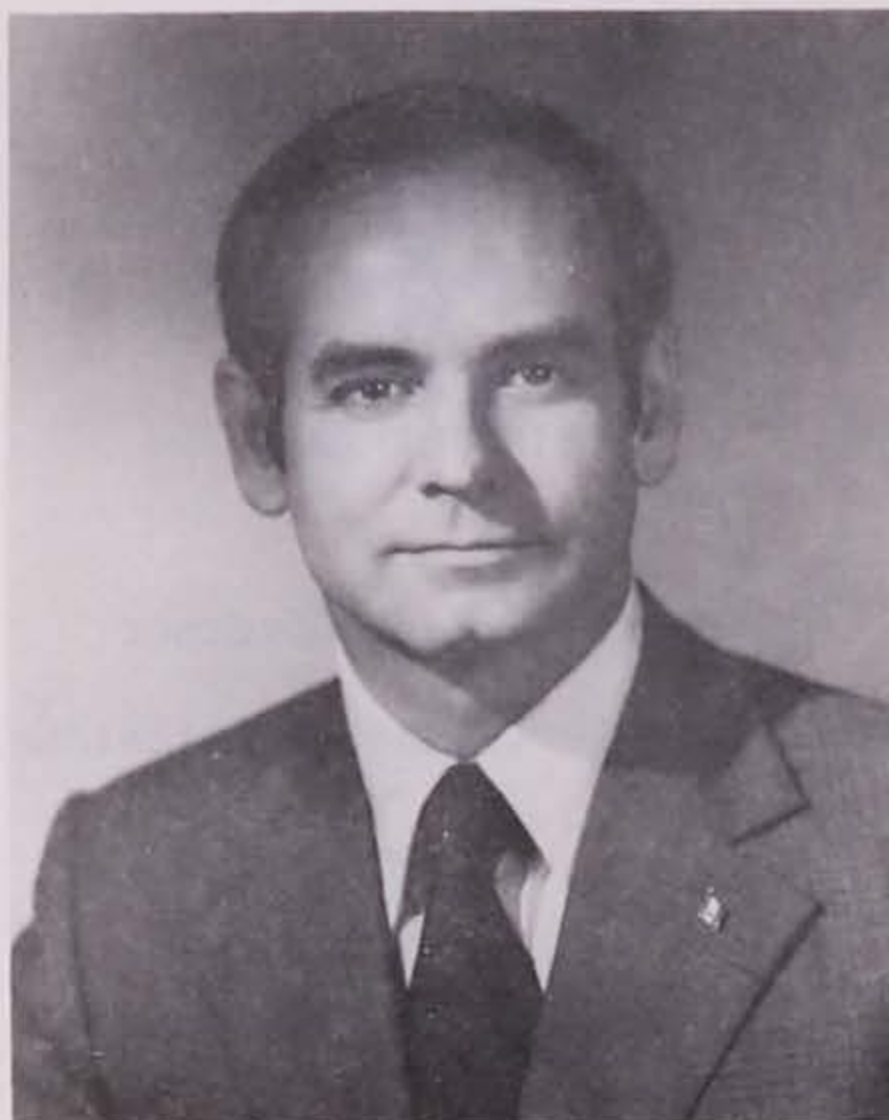
Allen J. Meier, Labor Commissioner

Compiled by the

Research and Statistics Division
307 East 7th Street
Des Moines, Iowa 50319
(515) 281-3606

November, 1981

ACKNOWLEDGEMENT



Robert D. Ray
Governor of Iowa

The Bureau of Labor wishes to acknowledge the support that Governor Robert D. Ray has given to the many programs administered by our Department. Governor Ray has always considered the health and safety and Iowa's workers and citizens to be of high priority. With new and existing programs competing for the limited public funding available, the Bureau of Labor could not have achieved the performance goals reflected in this report without the support of his office and staff.

TABLE OF CONTENTS

	PAGE
INTRODUCTION.....	vi
LABOR COMMISSIONER.....	1
Table 1. Professional Wrestling and Boxing Licenses Issued and Revenues Collected, Calendar Years 1979-1980.....	2
Organization of the Iowa Bureau of Labor.....	3
ADMINISTRATIVE SERVICES DIVISION.....	4
Table 1. Budget Information, Fiscal Years 1979-1980.....	5
BOILER DIVISION.....	6
Table 1. Report of Boiler Inspection and Fees Collected, State and Insured Boilers Fiscal Years 1979-1980.....	7
EDUCATION AND PUBLIC SECTOR CONSULTATION DIVISION.....	8
Table 1. Activities Conducted by the Safety/Education/ Consultation Division, Calendar Years 1979- 1980.....	9
Table 2. Instructional Module Packages Available From the Safety Education/Consultation Division of the Iowa Bureau of Labor.....	10
ELEVATOR SAFETY AND AMUSEMENT PARK/RIDE DIVISION.....	11
Table 1. Report of Elevator Operating Permits Issued, Inspections and Fees Collected, Fiscal Years 1979-1980.....	12
Table 2. Report of Amusement Park/Ride Permits Issued, Inspections and Fees Collected, Calendar 1979-1980.....	13
OCCUPATIONAL SAFETY AND HEALTH DIVISION.....	14
Table 1. Occupational Safety and Health Administration State Performance, Fiscal Year 1979.....	17
Table 2. Occupational Safety and Health Administration State Performance, Fiscal Year 1980.....	18
Table 3. Number of Appeals and Appeal Rate Under the Iowa Occupational Safety and Health Act, Calendar Years 1979-1980.....	19
Table 4. Discrimination Case Activity Under the Iowa Occupational Safety and Health Act, Calendar Years 1979-1980.....	20
PRIVATE SECTOR SAFETY AND HEALTH CONSULTATION DIVISION.....	21
Table 1. Activities Conducted by the Private Sector Safety and Health Consultation Division, Calendar Years 1979-1980.....	22

Table of Contents - Continued

	PAGE
RESEARCH AND STATISTICS DIVISION.....	23
Table 1. Nature of Injury or Illness: Number and Percent Distribution of Cases, by Industry Division. Reported Cases Which Occurred During 1979.....	25
Table 2. Nature of Injury or Illness: Number and Percent Distribution of Cases, by Industry Division. Cases Received During 1980.....	26
Table 3. Part of Body Affected: Number and Percent Distribution of Cases, by Industry Division. Reported Cases Which Occurred During 1979.....	27
Table 4. Part of Body Affected: Number and Percent Distribution of Cases, by Industry Division. Cases Received During 1980.....	28
Table 5. Source of Injury or Illness: Number and Percent Distribution of Cases, by Industry Division. Reported Cases Which Occurred During 1979.....	29
Table 6. Source of Injury or Illness: Number and Percent Distribution of Cases, by Industry Division. Cases Received During 1980.....	30
Table 7. Type of Accident or Exposure: Number and Percent Distribution of Cases, by Industry Division. Reported Cases Which Occurred During 1979.....	31
Table 8. Type of Accident or Exposure: Number and Percent Distribution of Cases, by Industry Division. Cases Received During 1980.....	32
Table 9. Occupation of Injured or Ill Workers: Number and Percent Distribution of Cases, by Industry Division. Reported Cases which Occurred During 1979.....	33
Table 10. Occupation of Injured or Ill Workers: Number and Percent Distribution of Cases, by Industry Division. Cases Received During 1980.....	34
Table 11. Distribution of Injuries and Illnesses and Employment, by Industry Division, 1979-1980.....	35
Table 12. Work Related Employee Deaths, by Industry Division, 1979-1980.....	36
Table 13. Work Related Employee Fatalities, by Cause of Death, 1979-1980.....	36
Table 14. Distribution of Work Related Employee Deaths and Employment, by Industry Division, 1979-1980.....	37
Technical Notes.....	38

Table of Contents - Continued

	PAGE
Table 15. Materials Available from the Research and Statistics Division of the Iowa Bureau of Labor.....	40
WAGE AND WORKPLACE STANDARDS DIVISION.....	41
Table 1. Report of Licenses Issued and Fees Collected, Private Employment Agencies, Fiscal Years 1979-1980.....	42
Table 2. Wage Collection Cases Initiated on Behalf of Claimants, Fiscal Years 1979-1980.....	43
Table 3. Number of Certificates of Age, Work Permits, Street Trades Permits, and Migrant Work Permits, Calendar Years 1979-1980.....	45
APPENDIX.....	47
Summary of Work Related Deaths, 1979.....	48
Summary of Work Related Deaths, 1980.....	63

INTRODUCTION

The Bureau of Labor's Biennial Report for 1979 and 1980 contains descriptions and statistical summaries of its varied activities and services to the workers and employers of the State of Iowa. The following is a brief summary of each of the laws and programs administered by the Bureau of Labor. In addition to the specific activities outlined below, the Bureau of Labor offers educational programs in the area of occupational safety and health to both employers and employees. Also, the Bureau of Labor serves as an information or referral service to workers and employers for questions pertaining to conditions of employment or for problems arising out of and in the course of one's employment. If you have any questions relating to the activities or services of the Iowa Bureau of Labor, please contact our office.

Occupational Safety and Health

The purpose of the Iowa Occupational Safety and Health Act is to assure every working man and woman in this state safe and healthful working conditions and to preserve human resources. The Act authorizes the Labor Commissioner to set safety and health standards, provides for research in the safety and health areas, and sets up an inspection and enforcement program. The coverage of this Act extends to all employers in the state with one or more employees. Excluded are mining operations and Federal government installations. Safety and health coverage provided by the Bureau of Labor affects a total of 1,127,400 workers.

Wage Payment Collection

The purpose of the Iowa Wage Payment Collection Law is to insure that an employer pays all wages due its employees, less any lawful deductions, on regular paydays which are at consistent intervals from each other and which are designated in advance by the employer. It is the duty of the Labor Commissioner to administer and enforce the provisions of the Law, to investigate charges, and if necessary commence a civil action to recover any unpaid wages due the employee.

Child Labor

The Iowa Child Labor Law prescribes hours and conditions of work that are permissible for the employment of youth. Although persons over 16 years of age may be employed legally in most occupations, the Law sets an 18 years of age minimum for employment in certain particularly hazardous jobs in order to protect young workers from industrial injury. Under the Iowa Child Labor Law, employers are required to obtain work permits or certificates of age before they employ minors of certain ages. These permits show that the minor has met the minimum age and other requirements of State law. It is the duty of the Labor Commissioner to enforce the provisions of the Law.

Boiler Inspection

It is the duty of the Labor Commissioner to inspect or cause to be inspected at least once every twelve months steam and hot water boilers used for heating and other such equipment covered by the Iowa Boiler Inspection Law. The purpose of the inspection is to determine whether the equipment is in safe and satisfactory condition and properly constructed and maintained for the purpose for which it is used.

Elevator Inspection

The purpose of the State Elevator Code is to provide for the public safety and to protect the public welfare of persons using any elevator, dumbwaiter, escalator, moving walk, or manlift subject to the Code. It is the function of the Bureau of Labor to adopt rules governing maintenance, construction, alteration, and installation of facilities, and the inspection and testing of new and existing installations.

Inspection of Amusement Parks/Rides

The purpose of the Iowa Amusement Ride Safety Inspection Law is to minimize in so far as possible injury or death that may result from the operation of amusement devices or carnivals. It is the function of the Bureau of Labor to determine if an amusement ride, amusement device, concession booth, or any related electrical equipment is in compliance with safety rules and will provide protection to the public using such ride, device, booth or related electrical equipment.

On-Site Consultation

The Iowa Bureau of Labor offers a free on-site safety and health consultation service to employers who request it. In providing this service, highest priority is given to smaller businesses and to workplaces where a high degree of hazard is known to exist. The consultation is used to inform the employer of conditions and practices in his establishment which may not be in compliance with the law, standards or rules and regulations. It is a means of explaining job safety and health regulations and informing the employer how to comply with them. The on-site consultation service is an integral part of the Bureau of Labor's occupational safety and health program and is available to both private sector and public sector employers.

Inspection of Temporary Labor Camps

The Iowa Bureau of Labor inspects temporary labor camps to insure that they are environmentally safe and that the site, shelter, water supply, toilet facilities, sewage disposal facilities, laundry, hand-washing and bathing facilities and lighting are adequate. Such temporary labor camps are occupied by migrant workers. The inspections are performed as a part of the Bureau of Labor's occupational safety and health program.

License for Employment Agencies

Employment agencies are required to obtain licenses from the Employment Agency License Commission before they conduct their business and to file a schedule of fees charged. The Labor Commissioner is a member of the Commission; it is his duty to administer the law relating to employment agencies and to investigate complaints under it. Fees chargeable by employment agencies may not exceed 25 percent of the first month's pay for employment paying less than \$250 per month and no charge for furnishing or procurement of employment shall exceed 8 percent of the annual gross earnings. However, if fees are charged solely to the employer there is no restriction on the amount that can be charged.

Railway Employees Sanitation and Shelter

The Iowa Railway Employees Sanitation and Shelter Act requires that railway companies within the State provide adequate sanitation and shelter for all railway employees. The Iowa Bureau of Labor has adopted regulations and conducts inspections to insure that the water supply, toilets, eating places and sleeping accommodations of railway workers are safe and meet required specifications.

Research and Statistics

The Iowa Occupational Safety and Health Act requires the Labor Commissioner to develop and maintain an effective program of collection, compilation and analysis of occupational safety and health statistics. The Research and Statistics Division has implemented and maintains statistical programs that are uniform with those of the U. S. Department of Labor and of other states. These programs provide reliable measures for evaluating the incidence, nature, and causes of injuries and illnesses in the work place in order to aid the Labor Commissioner in reducing occupational fatalities, injuries, and illnesses in Iowa. The statistical data are also made available to employers, employees, researchers, and safety and health professionals to create an awareness of the seriousness and the nature of unsafe and unhealthful working conditions. The data identify problem areas specific to the industries and safety priorities of Iowa and advance accident and illness prevention efforts.

LABOR COMMISSIONER



Allen J. Meier
Labor Commissioner



Marjorie Connors
Confidential
Secretary



Walter H. Johnson
Deputy Labor
Commissioner



Edward E. Estkowski
Special Advisor
to the Commissioner

The office of Labor Commissioner was created by the 20th Iowa General Assembly in 1884. The Bureau of Labor, under the control of the Commissioner, is responsible for the enforcement of laws relating to occupational safety and health, child labor, passenger and freight elevators, installation and inspection of fired and unfired pressure vessels, private employment agencies, reporting of work injuries and illnesses, the inspection and regulation of amusement rides, wage collection/payment, and railroad sanitation laws. Under the provisions of law, the Labor Commissioner is a member of the Employment Agency License Commission and chairman of the Committee on Child Labor.

The Employment Agency License Commission investigates and licenses all applicants for private employment agency licenses. The Commission has the authority to adopt regulations necessary for the proper enforcement and administration of Chapters 94 and 95 of the Code of Iowa. Commission members include Secretary of State Mary Jane O'Dell, Industrial Commissioner Robert C. Landess, and Labor Commissioner Allen J. Meier.

The Committee on Child Labor holds public hearings, formulates rules more specifically defining the occupations and equipment permitted or prohibited by Chapter 92 of the Code of Iowa, and issues general and special orders prohibiting or allowing the employment of persons under eighteen years of age in any place of employment hazardous to their health, safety and welfare. The Committee members are Giles J. Smith, representing the Superintendent of Public Instruction; John S. Spear, representing the Director of the Iowa Department of Job Service; Penny Binger and Earnest A. Comito, appointed by Governor Robert D. Ray as public representatives and Labor Commissioner Allen J. Meier.

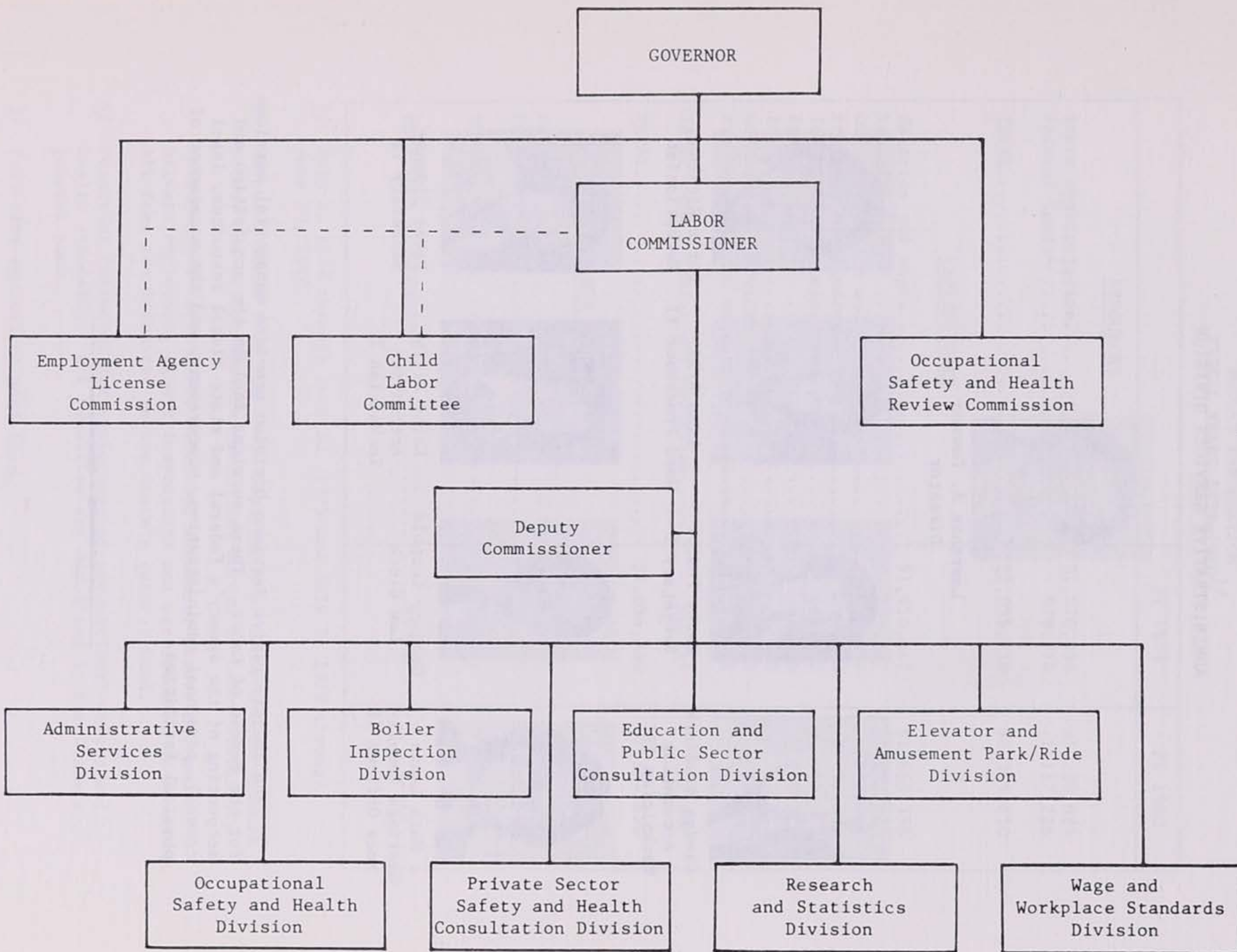
In August 1979, the Labor Commissioner was named Iowa Commissioner of Athletics. In that capacity he is responsible for regulating all professional boxing and wrestling events held in Iowa. Under the law each promoter in the State of Iowa must be bonded and each event must be licensed. A fee of 5 percent of the gross receipts, after deducting any federal admission tax, is collected for each event. Receipts are deposited in the State General Fund.

Members of the Athletic Commissioner's Ad Hoc Advisory Committee are: Al (Babe) Bisignano, Des Moines; Calvin Crook, Newton; Clayton Johnson, Sioux City; Harold Schrader, Cedar Rapids; and Judd E. Truax, Cedar Falls.

Table 1
STATE OF IOWA
PROFESSIONAL WRESTLING AND BOXING
LICENSES ISSUED AND REVENUES COLLECTED
CALENDAR YEARS 1979-1980

	Wrestling		Boxing	
	1979	1980	1979	1980
Number of licenses issued...	28 ^{1/}	60	0	11
Revenue collected.....	\$5,004.12	\$17,238.00	0	\$12,766.14

1/ Allen J. Meier appointed Athletic Commissioner August 1979.
Licenses and revenue collected for five months only in 1979.



ORGANIZATION OF THE IOWA BUREAU OF LABOR

ADMINISTRATIVE SERVICES DIVISION



Lawrence A. Dawson
Director



Gladys Braddock
Accounting
Technician III



Kathy Foster
Secretary I



Lisa Hill
Word Processor II



Darla Kickbush
Receptionist



Mark Landa
Hearings Compliance
Officer II



Gregory Leopold
Law Clerk



Kathy Lilly
Accounting
Technician I



Patti Sidoner
Secretary II

The Administrative Services Division provides managerial services for the Bureau of Labor. These services include the acquisition and accounting of the agency's federal and state fiscal resources, legal counsel, personnel administration, procurement, and the management of physical facilities.

Table 1
IOWA BUREAU OF LABOR
BUDGET INFORMATION
FISCAL YEARS 1979-1980^{1/}

	FY 1979	FY 1980
<u>RESOURCES</u>		
State appropriation.....	\$1,076,056	\$1,238,624
Federal funds ^{2/}	979,274	1,117,226
TOTAL.....	\$2,055,330	\$2,355,850
<u>EXPENDITURES</u>		
Salaries and wages.....	\$1,450,547	\$1,668,358
Travel.....	183,427	205,176
Office supplies and expense.....	76,082	132,701
Printing and binding.....	16,038	12,612
Telephone and telegraph.....	21,542	41,667
Equipment.....	85,024	120,410
Insurance.....	140	153
Contractual services.....	190,642	82,686
Professional and scientific services...	21,574	
Inter fund transfer and reversion.....	10,314	92,087
TOTAL.....	\$2,055,330	\$2,355,850
<u>REVENUE GENERATED</u>		
Fees ^{3/}	\$ 337,713	\$ 381,505
Penalties ^{4/}	263,839	265,595
TOTAL.....	\$ 601,552	\$ 647,100
POSITIONS AUTHORIZED ^{5/}	85.50	92.12

^{1/} July 1, 1978 through June 30, 1979 and July 1, 1979 through June 30, 1980.

^{2/} Matching funds from the U. S. Department of Labor's Occupational Safety and Health Administration and Bureau of Labor Statistics.

^{3/} Fees charged for boiler, elevator, amusement park/ride, and private employment agency inspections and certificates or licenses. All fees are deposited in the State's general fund.

^{4/} Penalties collected for violations of occupational safety and health standards. All penalties are deposited in the State's general fund.

^{5/} Full-time equivalent positions.

BOILER DIVISION



Waldo W. Larsen
Chief Boiler Inspector



Nadine Abbott
Clerk Typist II



Odella Daniels
Secretary I



Jesse Aspedon
Boiler Inspector



Charles Harris
Boiler Inspector



Harold McLamb
Boiler Inspector

The Boiler Division maintains records of steam boilers and other equipment in the State subject to the Boiler Inspection Law, Chapter 89 of the Code of Iowa. Each record contains a full description of the equipment, including the name of the owner or user, its location, type, dimensions, age, condition, amount of pressure allowed, and the date last inspected. It is the function of the Chief Inspector and the three Deputy Inspectors from the Bureau of Labor, assisted by numerous Special Inspectors which work for insurance carriers but hold a commission from the Labor Commissioner, to determine whether such equipment is in safe and satisfactory condition and properly constructed and maintained for the purpose for which it is used.

Table 1
STATE OF IOWA
REPORT OF BOILER INSPECTIONS
AND FEES COLLECTED
STATE AND INSURED BOILERS
FISCAL YEARS 1979-1980^{1/}

	FY 1979	FY 1980	TOTAL FY 1979 & 1980
INSPECTIONS^{2/}			
State scheduled.....	1,949	1,710	3,659
State special ^{3/}	6	11	17
Insured.....	11,902	12,528	24,430
TOTAL.....	13,857	14,249	28,106
FEES COLLECTED^{4/}			
State scheduled inspections..	\$49,036.00	\$44,670.00	\$ 93,706.00
State special inspections....	940.00	675.00	1,615.00
Insured inspections.....	49,380.00	50,508.00	99,888.00
TOTAL.....	\$99,356.00	\$95,853.00	\$195,209.00
SPECIAL INSPECTOR COMMISSIONS^{5/}			
Number granted.....	132	191	323
Fees collected.....	\$ 1,320.00	\$ 1,910.00	\$ 3,230.00

^{1/} July 1, 1978 through June 30, 1979 and July 1, 1979 through June 30, 1980.

^{2/} State inspections are made by the State Boiler Inspector and his Deputies from the Bureau of Labor. Insured inspections are made by insurance company inspectors deputized by the Bureau of Labor.

^{3/} Shop surveys and special inspections conducted at the request or convenience of the owner.

^{4/} During Fiscal Years 1979 and 1980, a fee of \$5.00 was collected by the Bureau of Labor for the issuance of a certificate to insurance inspected equipment. Rates of charges for State inspected equipment are determined under Chapter 89.7, Code of Iowa. Expenses for travel and subsistence are charged to the owner as fees whenever special inspections are requested.

^{5/} Commissions granted by the Labor Commissioner to Special Inspectors who work for insurance carriers. The fee for issuance of a commission is \$10.00.

EDUCATION AND PUBLIC SECTOR CONSULTATION DIVISION



Hewitt Judkins
Director



Marita Moir
Clerk Typist II

The Bureau of Labor offers a free on-site safety and health consultation service to public sector employers upon request. The public sector encompasses the state and its political subdivisions. Included are cities, towns, counties, state agencies, schools, etc. In providing this service, highest priority is given to the smaller workplaces or to workplaces that have a known high degree of existing hazards. The on-site consultation is used to inform the employer of conditions and practices in his establishment that may not be in compliance with the law, standards, or other rules and regulations. The consultation visit provides the means for explaining job safety and health regulations and informing the employer how to comply with these regulations.

Educational activities consist of providing pamphlets, films, slides, and training modules to employers and employees or the holding of seminars for and giving speeches to such groups. There is no charge for these services. A catalog listing all films, slides, and training modules available at the Bureau of Labor will be sent to employers and employees upon request. Presentations on the IOSH Act are available and any of two to forty-hour safety seminars on subjects and codes that pertain specifically to the industry or group requesting them may be arranged.

The Bureau of Labor will do its utmost to advise the public of all new developments, rules and regulations under the Occupational Safety and Health Act and how to comply with them.

Table 1
STATE OF IOWA
ACTIVITIES CONDUCTED BY THE
SAFETY EDUCATION/CONSULTATION DIVISION
CALENDAR YEARS 1979-1980

Activity	1979	1980
Safety films distributed ^{1/}	103	67
Training and Educational Modules distributed ^{2/}	39	31
Safety slide sets distributed.....	3	9
Educational seminars or speeches given.....	36	53
Number in attendance.....	4,418	5,671
Safety school sessions held.....	12	11
Students in attendance.....	342	505
Consultations conducted.....	11	30

1/ For a complete listing of films currently available and a brief description of each, contact the Iowa Bureau of Labor.

2/ See Table 2 for a listing of the modules available.

Table 2
INSTRUCTIONAL MODULE PACKAGES
AVAILABLE FROM THE SAFETY EDUCATION/CONSULTATION
DIVISION OF THE IOWA BUREAU OF LABOR

The following comprehensive packages of instructional materials designed to create a better understanding of OSHA and IOSHA requirements are available for loan upon request from the Iowa Bureau of Labor at no charge.

<u>Module</u>	<u>Subject</u>
Industrial Modules	
O	Machinery and Machine Guarding.
N	Material Handling and Storage.
EL	Fire Protection and Egress.
D	Walking and Working Surfaces.
H	Hazardous Materials.
Q	Welding, Cutting and Brazing.
Construction Modules	
CP	Excavation, Trenching and Shoring.
CLM	Ladders and Scaffolding, Floor and Wall Openings, and Stairways.
CWO	Rollover Protection, Overhead Protection, Motor Vehicles and Mechanized Equipment.
CN	Cranes, Derricks, Hoists, Elevators and Conveyors.
CV	Power Transmission and Distribution.
CJ	Welding and Cutting.
Specific Occupations	
101	Equipment Repair Shops.
102.A	Meat Products Manufacturing (Employees).
102.B	Meat Products Manufacturing (Employers).
103	Carpentry.
103.A	Carpentry (Short Course).
105	Road Repair and Maintenance.
Industrial Hygiene	
G-0	Control of Industrial and Occupational Health Hazards.
G-93	Control of Occupational and Industrial Air Contaminants.
G-94	Industrial Ventilation.
G-95	Occupational Noise Exposure.
G-96/C-53	Ionizing Radiation.
G-I/E	Personal Protective Equipment.
G-Q/J	Health Practices for Welding, Cutting and Brazing.
G-05	Brucellosis - Meat Packing Industry.

ELEVATOR SAFETY AND AMUSEMENT PARK/RIDE DIVISION



Harold Holmgaard
Director



Marcia Bradford
Secretary I



Harold Angstrom
Field Safety
Technician



Charles R. Lyon
Field Safety
Technician



Richard Myers
Lead Elevator
Inspector



Richard Osborn
Elevator
Inspector



Malcom Paine
Elevator
Inspector



Myron Spragg
Elevator
Inspector

The Amusement Park/Ride Section is responsible for the safety inspection of amusement rides, devices, concessions, and associated electrical wiring used at carnivals or fairs within the State. Two field safety technicians and the safety inspection supervisor inspect about 60 carnival operators and 70 fairs each year. Approximately 4,000,000 persons are exposed to potential hazards from 500 rides and 800 concessions annually. Amusement park/ride inspections, including preliminary, annual, and recheck inspections, are performed during a seven-month period. During the five-month winter season, the two field safety technicians and the secretary are involved in elevator inspection activities.

The Elevator Safety Section is responsible for the safety inspections of elevators, dumbwaiters, escalators, and moving walks. The Division is headed by the safety inspection supervisor and is staffed by a lead elevator inspector, a secretary and three full time elevator inspectors.

Table 1
STATE OF IOWA
REPORT OF ELEVATOR OPERATING PERMITS
ISSUED, INSPECTIONS AND
FEES COLLECTED
FISCAL YEARS 1979-1980^{1/}

	FY 1979	FY 1980	TOTAL FY 1979 & 1980
Number of Operating Permits Issued ^{2/} ..	1,615	1,883	3,498
<u>INSPECTIONS</u>			
New Installations/Alterations.....	263	201	464
Annual.....	1,711	1,933	3,644
Reinspections ^{3/}	1,332	1,657	2,989
TOTAL.....	3,306	3,791	7,097
<u>FEES COLLECTED</u>			
Annual Inspection Fees.....	\$69,512.00	\$ 88,705.00	\$158,217.00
Installation/Alteration Permit Fees...	12,851.87	16,196.98	29,048.85
TOTAL.....	\$82,363.87	\$104,901.98	\$187,265.85
Accidents Investigated.....	12	25	37

^{1/} July 1, 1978 through June 30, 1979 and July 1, 1979 through June 30, 1980.

^{2/} For elevators, escalators, moving walks or dumbwaiters.

^{3/} Reinspection is required to follow-up on deficiencies discovered during an original inspection.

Table 2
STATE OF IOWA
REPORT OF AMUSEMENT PARK/RIDE
PERMITS ISSUED, INSPECTIONS
AND FEES COLLECTED
CALENDAR YEARS 1979-1980

	1979	1980	TOTAL 1979 & 1980
NUMBER OF PERMITS TO OPERATE ISSUED.	60	62	122
<u>INSPECTIONS</u>			
Electrical.....	834	811	1,645
Mechanical-Electrical.....	488	483	971
TOTAL.....	1,322	1,294	2,616
<u>FEES COLLECTED^{1/}</u>			
Permit Fees.....	\$ 770	\$ 800	\$ 1,570
Inspection Fees.....	46,510	50,605	97,115
TOTAL.....	\$47,280	\$51,405	\$98,685
Mechanical Failures Reported.....	0	0	0
Personal Injuries Reported.....	0	1	1

^{1/} Fees charged are: Permit Fee for 1 through 10 rides, devices or concessions, \$10 and for 11 or more rides, devices or concessions, \$20; Mechanical-Electrical Inspection Fee for rides which are designed for 75 lbs. or less per passenger unit, \$50 for each inspection, for rides which are designed for more than 75 lbs. and for which the manufacturer's recommended assembly time is less than 40 work hours, \$75 for each inspection, and for rides for which the manufacturer's recommended assembly time is 40 work hours or more, \$100 for each inspection; and Electrical Inspection of concession booths and amusement devices, \$25 each.

OCCUPATIONAL SAFETY AND HEALTH DIVISION



Mary L. Bryant
IOSH Administrator



Jerome M. Skeers
Labor Safety
Officer



David Trott
Labor Safety
Officer



Phyllis Kelley
Discrimination
Investigator



Majorie Hines
Word Processor II



Donna Phillips
Secretary I

The Iowa Occupational Safety and Health Act was promulgated to assure, as far as possible, that every working man and woman in the State of Iowa is provided with safe and healthful working conditions and that no employee will suffer diminished health, functional capacity or shorter life expectancy due to his or her work experience. The Act

covers every employer who is engaged in a business, trade, commerce or industrial activity in the State who has one or more employees and also includes State and local governments.

The Iowa Occupational Safety and Health Division is responsible for enforcing compliance with the standards and regulations adopted under the Act. The Division is made up of the IOSH Administrator, Labor Safety Officers, Compliance Safety and Health Officers, Industrial Hygienists and clerical support staff. The Compliance Safety and Health Officers are organized into groups which specialize in either construction, transportation and public utilities, and public sector enforcement; in general industry, retail trade, wholesale trade, and service industry enforcement; or in discrimination investigations. The Labor Safety Officers are responsible for providing technical expertise to the Compliance Safety and Health Officers, to the Industrial Hygienists and to employers and employees in the State.

Unannounced inspections are conducted by the Compliance Safety and Health Officer or Industrial Hygienist to determine compliance with the standards and regulations. Fatalities and/or catastrophes and employee complaints are investigated. And, since the Act provides that it is unlawful for an employer to discharge or in any way discriminate against an employee for exercising any of his or her rights under the Act, such discrimination allegations are also investigated.

INDUSTRIAL HYGIENISTS



John Bremhorst



Robert Grimm



Charles Hooper



Betty Meeker



Shashi Patel



Ralph Rogers



Lorraine Stamus



Ray Wiedemeier

COMPLIANCE SAFETY AND HEALTH OFFICERS



Gerald Bowser



Donald Diskey



Richard Griffiths



Michael Heth



Robert Hild



Edward Hines



Robert Kinne



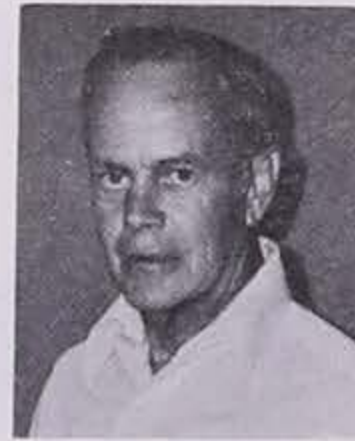
Ronald Knutson



Kenneth Kunert



Everett Loy



Dwain Lundeen



John Pitstick



Carl Robey



Lee Sample



Saverio Sirna



James Wetherbee

Table 1
STATE OF IOWA
OCCUPATIONAL SAFETY AND HEALTH ADMINISTRATION
STATE PERFORMANCE - FISCAL YEAR 1979^{1/}

	Number	Percent or Average
Total inspections conducted.....	2,131	
Safety inspections.....	1,878	88.1%
Health inspections.....	253	11.9%
Accident inspections.....	231	10.8%
Complaint inspections.....	515	24.2%
General schedule inspections.....	678	31.8%
Follow-up inspections.....	707	33.2%
Contested.....	274	12.9%
Inspections in compliance (Excluding follow-up).....	385	18.1%
Total employees covered by inspections.....	140,172	Avg. = 66/Inspection
Employees covered by safety inspections.....	122,148	Avg. = 65/Inspection
Employees covered by health inspections.....	18,024	Avg. = 71/Inspection
Total violations.....	3,990	
Serious violations.....	1,187	29.7%
Other than serious violations.....	2,803	70.3%
Other than serious violations with penalty ..	56	2.0%
Citable hazards identified.....	12,649	
Citable hazards per 100 employees.....		9
Total penalties proposed.....	\$332,722	
Serious penalties proposed.....	\$326,107	Avg. = \$275/Violation
Other than serious penalties proposed.....	\$ 6,615	Avg. = \$ 2/Violation
Avg. penalty per other than serious violation with a penalty proposed.....		\$118
Consultation visits (public sector).....	3	

^{1/} July 1, 1978, through June 30, 1979.

Table 2
STATE OF IOWA
OCCUPATIONAL SAFETY AND HEALTH ADMINISTRATION
STATE PERFORMANCE - FISCAL YEAR 1980 ^{1/}

	Number	Percent or Average
Total inspections conducted.....	1,684	
Safety inspections.....	1,521	90.3%
Health inspections.....	163	9.7%
Accident inspections.....	297	17.6%
Complaint inspections.....	390	23.2%
General schedule inspections.....	534	31.7%
Follow-up inspections.....	463	27.5%
Contested.....	368	21.9%
Inspections in compliance (Excluding follow-up).....	342	20.3%
Total employees covered by inspections.....	149,412	Avg. = 89/Inspection
Employees covered by safety inspections.....	134,158	Avg. = 88/Inspection
Employees covered by health inspections.....	15,254	Avg. = 94/Inspection
Total violations.....	3,248	
Serious violations.....	1,629	50.2%
Other than serious violations.....	1,619	49.8%
Other than serious violations with penalty...	54	3.3%
Citable hazards identified.....	12,602	
Citable hazards per 100 employees.....		8
Total penalties proposed.....	\$430,055	
Serious penalties proposed.....	\$425,880	Avg. = \$261/Violation
Other than serious penalties proposed.....	\$ 4,175	Avg. = \$ 3/Violation
Avg. penalty per other than serious violation with a penalty proposed.....		\$77
Consultation visits (public sector).....	32	

^{1/} July 1, 1979, through June 30, 1980.

Table 3
STATE OF IOWA
NUMBER OF APPEALS AND
APPEAL RATE UNDER THE
IOWA OCCUPATIONAL SAFETY AND HEALTH ACT
CALENDAR YEARS 1979-1980

Month	1979		1980	
	Number of Appeals <u>1/</u>	Appeal Rate <u>2/</u>	Number of Appeals <u>1/</u>	Appeal Rate <u>2/</u>
January...	20	12.6	24	18.7
February..	23	15.3	21	14.8
March.....	20	13.1	31	26.7
April.....	23	16.2	24	16.8
May.....	29	17.3	33	22.0
June.....	27	21.1	35	24.3
July.....	31	20.5	34	23.1
August....	40	25.3	33	28.0
September.	24	20.2	37	31.4
October...	33	20.6	45	36.3
November..	26	18.3	28	29.2
December..	47	35.9	31	36.0
TOTAL.....	343		376	
Monthly Average...	28.6	19.4	31.3	24.9

1/ Appeals of safety and health citations or of penalty amounts proposed, or both.

2/ The ratio of the number of appeals filed to the number of inspections conducted each month. Some distortion may exist since appeals may be filed in a month subsequent to when the particular inspection was conducted.

Table 4
STATE OF IOWA
DISCRIMINATION CASE ACTIVITY UNDER
THE IOWA OCCUPATIONAL SAFETY AND HEALTH ACT ^{1/}
CALENDAR YEARS 1979-1980

Month	1979		1980	
	New Cases Filed	Cases Closed	New Cases Filed	Cases Closed
January.....	0	0	0	0
February.....	1	0	2	1
March.....	1	1	1	3
April.....	0	1	5	0
May.....	1	0	1	0
June.....	0	1	3	2
July.....	0	1	2	0
August.....	5	0	0	0
September.....	0	0	1	0
October.....	1	3	5	4
November.....	2	1	5	5
December.....	1	0	6	5
TOTAL.....	12	8	31	20

^{1/} Limited to discrimination allegations by an employee against an employer for discharge or other discrimination for exercising his or her rights under the Iowa Occupational Safety and Health Act.

PRIVATE SECTOR SAFETY AND HEALTH CONSULTATION DIVISION



William B. Maddex
Director



Robert Chesher
Labor Safety
Officer



Philip Mercuris
Labor Safety and
Health Consultant



Donald Sutton
Labor Safety and
Health Consultant



Mary Finn
Labor Safety
Officer



Cynthia Baldwin
Industrial Hygienist



Margaret Myers
Secretary I

The Iowa Job Safety and Health Consultation Program helps private sector employers, particularly those with smaller businesses, to maintain a safe workplace by assisting them in understanding and complying with occupational safety and health regulations. The goal of the program is to aid employers in identifying and correcting potential hazards through voluntary compliance with IOSHA regulations before illnesses or injuries can occur. The program is cost-free and penalty-free to the employer. Upon receipt of a written request for this service, qualified consultants from the Bureau of Labor visit a business or work-site for the purpose of identifying safety and health hazards. Results of the on-site consultation visit are treated in strictest confidence, with the findings and any deviations from the standards being communicated to the employer in a written report.



Table 1
STATE OF IOWA
ACTIVITIES CONDUCTED BY THE
PRIVATE SECTOR SAFETY AND HEALTH
CONSULTATION DIVISION
CALENDAR YEARS 1979-1980

Activity	1979	1980
Consultations conducted.....	24	89
Serious hazards identified.....	142	351
Serious hazards corrected.....	43	281

RESEARCH AND STATISTICS DIVISION



John G. Patramanis
Director



Suzanne M. Hill
Statistical
Assistant II



Dianna L. Lowe
Secretary I



Barbara A. Smith
Statistical
Research Analyst I



Yvonne J. Smith
Statistical
Assistant II

The ultimate goal of the Iowa Occupational Safety and Health Act is to reduce the incidence of injuries and illnesses in Iowa's workplaces. Statistics are needed to identify problem areas, as a basis for state and national decisionmaking, and to monitor program effectiveness.

The IOSH Act directs the Labor Commissioner to "develop and maintain an effective program of collection, compilation, and analysis of occupational safety and health statistics." The Research and Statistics Division, in cooperation with the U. S. Bureau of Labor Statistics, has the responsibility for collecting data to assist IOSHA and OSHA in setting standards and seeking compliance, and to provide a resource for education, research, and other prevention efforts. To these ends, the Research and Statistics Division has conducted an annual survey of establishment injury and illness experience every year since 1971. The annual survey provides estimates of the numbers and rates of incidence of occupational injuries and illnesses by industry. These indicators are used and recognized as reliable measures of occupational injuries and illnesses. A detailed report of the results of the survey is published annually and is available upon request from the Bureau of Labor.

Detailed information about the causes of work-related disabilities is compiled from work injury reports submitted by Iowa's employers. The Thirty-Fifth General Assembly of Iowa, appreciating the need for more accurate data on accidents, enacted the first work injury reporting law. That act required employers, as of July 4, 1913, to report to the

Labor Commissioner any accidents occurring to an employee, while at work for the employer, when such accidents resulted in death or disability of the employee. This same requirement was reiterated in the Iowa Occupational Safety and Health Act of 1972 and has now, therefore, been in effect continuously for 68 years.

There are three types of information collected, coded and tabulated from employers' first reports of injury by the Research and Statistics Division. The first identifies the employer and permits classification of the case by industry and geographic location. The second lists the employee's age, sex, salary, and occupation. A third type provides an analysis of the injury or illness, answering questions with regard to the employee's activity at the time of injury, listing any objects or substances involved, and providing a description of the accident and injury or illness.

Because such data supplement information gathered in the annual survey and also further define problem areas identified from the survey, the program of compilation and tabulation is known as the Supplementary Data System (SDS). SDS data help direct a broad range of activities to reduce the incidence of occupational injuries and illnesses. In high incidence rate industries, the SDS data identify the major sources of injuries and illnesses and the most frequent types of accidents or exposures that are producing them. The data also identify the occupations of workers most frequently associated with the injuries or illnesses. In addition, the listing of sources of injuries or illnesses may indicate that new or improved safety and health standards are needed. Knowledge about the kinds of accidents is useful in directing IOSHA and OSHA compliance efforts. And, specific information about the part of the body affected may identify the need for personal protective equipment or expose the inadequacy of existing equipment. Furthermore, the data is a basis for developing educational and training materials for IOSHA and OSHA, employers, and employees.

The information in the tables that follow is compiled from work injury reports submitted by employers during the 1979-1980 biennium. The data are summarized at the industry division level. More detailed information about specific industries or injury or illness characteristics is available at the Bureau of Labor.

The Appendix contains a listing of each employee fatality that occurred in Iowa in 1979 and 1980. Included with each is a brief summary of the events leading to the death, the cause of death, the workers age and occupation, and the industry in which he or she was employed. The information is provided to illustrate the continued need for emphasis on job safety and health by both employers and employees.

Table 1
STATE OF IOWA

NATURE OF INJURY OR ILLNESS: NUMBER AND PERCENT DISTRIBUTION OF CASES, BY INDUSTRY DIVISION.
REPORTED CASES WHICH OCCURRED DURING 1979.

Industry Division	Total	Nature of Injury of Illness										
		Amputations	Burns(Heat)	Burns (Chemical)	Contusions, Bruises	Cuts, Lacerations	Fractures	Scratches, Abrasions	Sprains, Strains	All Occupational Diseases	All Other Classifiable	Non- Classifiable
<u>Total All Industries-</u> <u>Public & Private Sector.....</u>	20,778	265	572	178	2,839	3,150	2,215	502	8,215	1,620	1,110	112
Percent.....	100.0	1.3	2.8	.9	13.7	15.2	10.7	2.4	39.5	7.8	5.3	.5
<u>Total Private Sector-</u> <u>All Industries.....</u>	18,480	252	521	162	2,509	2,951	1,964	458	7,171	1,443	953	96
Percent.....	100.0	1.4	2.8	.9	13.6	16.0	10.6	2.5	38.8	7.8	5.2	.5
Agriculture, Forestry & Fish..	378	10	2	2	34	80	71	12	94	29	39	5
Percent.....	100.0	2.6	.5	.5	9.0	21.2	18.8	3.2	24.9	7.7	10.3	1.3
Mining.....	61	1	3	3	14	5	12	1	19	1	2	-
Percent.....	100.0	1.6	4.9	4.9	23.0	8.2	19.7	1.6	31.1	1.6	3.3	-
Construction.....	1,833	18	59	19	230	248	294	59	637	106	144	19
Percent.....	100.0	1.0	3.2	1.0	12.5	13.5	16.0	3.2	34.8	5.8	7.9	1.0
Manufacturing.....	11,036	163	279	102	1,564	1,973	953	299	4,256	1,011	402	34
Percent.....	100.0	1.5	2.5	.9	14.2	17.9	8.6	2.7	38.6	9.2	3.6	.3
Transportation & Public Util..	1,241	7	22	3	168	90	134	17	660	56	70	14
Percent.....	100.0	.6	1.8	.2	13.5	7.3	10.8	1.4	53.2	4.5	5.6	1.1
Wholesale Trade.....	1,256	22	19	13	173	180	186	22	452	76	105	8
Percent.....	100.0	1.8	1.5	1.0	13.8	14.3	14.8	1.8	36.0	6.1	8.4	.6
Retail Trade.....	1,234	20	90	8	145	243	128	20	418	59	90	13
Percent.....	100.0	1.6	7.3	.6	11.8	19.7	10.4	1.6	33.9	4.8	7.3	1.1
Finance, Ins.& Real Estate....	91	3	-	-	11	4	19	2	32	5	14	1
Percent.....	100.0	3.3	-	-	12.1	4.4	20.9	2.2	35.2	5.5	15.4	1.1
Services.....	1,350	8	47	12	170	128	167	26	603	100	87	2
Percent.....	100.0	.6	3.5	.9	12.6	9.5	12.4	1.9	44.7	7.4	6.4	.1
<u>Total Public Sector-</u> <u>All Industries.....</u>	2,298	13	51	16	330	199	251	44	1,044	177	157	16
Percent.....	100.0	.6	2.2	.7	14.4	8.7	10.9	1.9	45.4	7.7	6.8	.7

Table 2
STATE OF IOWA

NATURE OF INJURY OR ILLNESS: NUMBER AND PERCENT DISTRIBUTION OF CASES, BY INDUSTRY DIVISION.
CASES RECEIVED DURING 1980.

Industry Division	Total	Nature of Injury of Illness										
		Amputations	Burns(Heat)	Burns (Chemical)	Contusions, Bruises	Cuts, Lacerations	Fractures	Scratches, Abrasions	Sprains, Strains	All Occupational Diseases	All Other Classifiable	Non- Classifiable
<u>Total All Industries-</u> <u>Public & Private Sector.....</u>	25,492	296	729	211	2,722	3,096	3,046	361	10,513	1,761	2,032	725
Percent.....	100.0	1.2	2.9	.8	10.7	12.1	11.9	1.4	41.2	6.9	8.0	2.8
<u>Total Private Sector-</u> <u>All Industries.....</u>	23,004	285	674	202	2,435	2,908	2,717	335	9,391	1,616	1,807	634
Percent.....	100.0	1.2	2.9	.9	10.6	12.6	11.8	1.5	40.8	7.0	7.9	2.8
Agriculture, Forestry & Fish..	662	16	12	6	61	113	128	12	159	48	74	33
Percent.....	100.0	2.4	1.8	.9	9.2	17.1	19.3	1.8	24.0	7.3	11.2	5.0
Mining.....	123	4	1	-	17	9	29	5	31	10	14	3
Percent.....	100.0	3.3	.8	-	13.8	7.3	23.6	4.1	25.2	8.1	11.4	2.4
Construction.....	3,168	28	102	40	326	373	473	61	1,165	174	298	128
Percent.....	100.0	.9	3.2	1.3	10.3	11.8	14.9	1.9	36.8	5.5	9.4	4.0
Manufacturing.....	10,077	138	268	95	1,131	1,547	939	169	4,132	925	560	173
Percent.....	100.0	1.4	2.7	.9	11.2	15.4	9.3	1.7	41.0	9.2	5.6	1.7
Transportation & Public Util..	1,996	14	38	12	228	131	272	18	914	92	203	74
Percent.....	100.0	.7	1.9	.6	11.4	6.6	13.6	.9	45.8	4.6	10.2	3.7
Wholesale Trade.....	2,019	36	38	14	218	201	297	25	808	109	223	50
Percent.....	100.0	1.8	1.9	.7	10.8	10.0	14.7	1.2	40.0	5.4	11.0	2.5
Retail Trade.....	2,284	33	146	13	213	342	255	22	831	105	245	79
Percent.....	100.0	1.4	6.4	.6	9.3	15.0	11.2	1.0	36.4	4.6	10.7	3.5
Finance, Ins. & Real Estate...	188	1	-	2	17	9	33	2	80	22	18	4
Percent.....	100.0	.5	-	1.1	9.0	4.8	17.6	1.1	42.6	11.7	9.6	2.1
Services.....	2,487	15	69	20	224	183	291	21	1,271	131	172	90
Percent.....	100.0	.6	2.8	.8	9.0	7.4	11.7	.8	51.1	5.3	6.9	3.6
<u>Total Public Sector-</u> <u>All Industries.....</u>	2,488	11	55	9	287	188	329	26	1,122	145	225	91
Percent.....	100.0	.4	2.2	.4	11.5	7.6	13.2	1.0	45.1	5.8	9.0	3.7

Table 3
STATE OF IOWA

PART OF BODY AFFECTED: NUMBER AND PERCENT DISTRIBUTION OF CASES, BY INDUSTRY DIVISION,
REPORTED CASES WHICH OCCURRED DURING 1979.

Industry Division	Total	Part of Body Affected										
		Eyes	Head, Neck, Excluding Eyes	Fingers	Upper Extremities, Excluding Fingers	Back	Trunk, Except Back	Lower Extremities	Multiple Body Parts	Body System	Body, NEC	Non- Classifiable
Total All Industries- Public & Private Sector.....	20,778	543	890	2,920	3,404	4,922	2,470	4,378	879	354	3	15
Percent.....	100.0	2.6	4.3	14.1	16.4	23.7	11.9	21.1	4.2	1.7	*	.1
Total Private Sector- All Industries.....	18,480	487	732	2,767	3,157	4,343	2,175	3,798	728	278	3	12
Percent.....	100.0	2.6	4.0	15.0	17.1	23.5	11.8	20.6	3.9	1.5	*	.1
Agriculture, Forestry & Fish..	378	17	22	48	48	57	47	104	18	16	-	1
Percent.....	100.0	4.5	5.8	12.7	12.7	15.1	12.4	27.5	4.8	4.2	-	.3
Mining.....	61	2	1	5	3	16	6	19	8	1	-	-
Percent.....	100.0	3.3	1.6	8.2	4.9	26.2	9.8	31.1	13.1	1.6	-	-
Construction.....	1,833	74	80	167	232	409	250	481	99	36	-	5
Percent.....	100.0	4.0	4.4	9.1	12.7	22.3	13.6	26.2	5.4	2.0	-	.3
Manufacturing.....	11,036	285	371	2,034	2,197	2,449	1,228	2,003	326	139	2	2
Percent.....	100.0	2.6	3.4	18.4	19.9	22.2	11.1	18.1	3.0	1.3	*	*
Transportation & Public Util..	1,241	19	68	73	143	362	182	302	74	16	-	2
Percent.....	100.0	1.5	5.5	5.9	11.5	29.2	14.7	24.3	6.0	1.3	-	.2
Wholesale Trade.....	1,256	33	52	136	152	300	162	331	66	22	1	1
Percent.....	100.0	2.6	4.1	10.8	12.1	23.9	12.9	26.4	5.3	1.8	.1	.1
Retail Trade.....	1,234	28	59	197	189	307	113	263	65	12	-	1
Percent.....	100.0	2.3	4.8	16.0	15.3	24.9	9.2	21.3	5.3	1.0	-	.1
Finance, Ins. & Real Estate...	91	-	2	5	10	21	19	25	8	1	-	-
Percent.....	100.0	-	2.2	5.5	11.0	23.1	20.9	27.5	8.8	1.1	-	-
Services.....	1,350	29	77	102	183	422	168	270	64	35	-	-
Percent.....	100.0	2.1	5.7	7.6	13.6	31.3	12.4	20.0	4.7	2.6	-	-
Total Public Sector- All Industries.....	2,298	56	158	153	247	579	295	580	151	76	-	3
Percent.....	100.0	2.4	6.9	6.7	10.7	25.2	12.8	25.2	6.6	3.3	-	.1

Table 4
STATE OF IOWA
PART OF BODY AFFECTED: NUMBER AND PERCENT DISTRIBUTION OF CASES, BY INDUSTRY DIVISION.
CASES RECEIVED DURING 1980.

Industry Division	Total	Part of Body Affected										
		Eyes	Head, Neck, Excluding Eyes	Fingers	Upper Extremities, Excluding Fingers	Back	Trunk, Except Back	Lower Extremities	Multiple Body Parts	Body System	Body, NEC	Non- Classifiable
Total All Industries- Public & Private Sector.....	25,492	435	1,011	2,911	3,747	6,846	3,294	5,497	1,234	414	1	102
Percent.....	100.0	1.7	4.0	11.4	14.7	26.9	12.9	21.6	4.8	1.6	*	.4
Total Private Sector- All Industries.....	23,004	393	870	2,770	3,506	6,120	2,951	4,886	1,058	357	1	92
Percent.....	100.0	1.7	3.8	12.0	15.2	26.6	12.8	21.2	4.6	1.6	*	.4
Agriculture, Forestry & Fish..	662	19	23	67	84	119	95	179	45	29	-	2
Percent.....	100.0	2.9	3.5	10.1	12.7	18.0	14.4	27.0	6.8	4.4	-	.3
Mining.....	123	7	5	16	11	26	16	31	5	5	-	1
Percent.....	100.0	5.7	4.1	13.0	8.9	21.1	13.0	25.2	4.1	4.1	-	.8
Construction.....	3,168	85	134	292	393	788	419	809	167	63	1	17
Percent.....	100.0	2.7	4.2	9.2	12.4	24.9	13.2	25.5	5.3	2.0	*	.5
Manufacturing.....	10,077	174	312	1,623	1,937	2,437	1,278	1,855	315	111	-	35
Percent.....	100.0	1.7	3.1	16.1	19.2	24.2	12.7	18.4	3.1	1.1	-	.3
Transportation & Public Util..	1,996	18	114	102	184	608	270	482	182	30	-	6
Percent.....	100.0	.9	5.7	5.1	9.2	30.5	13.5	24.1	9.1	1.5	-	.3
Wholesale Trade.....	2,019	37	78	176	229	560	281	517	99	37	-	5
Percent.....	100.0	1.8	3.9	8.7	11.3	27.7	13.9	25.6	4.9	1.8	-	.2
Retail Trade.....	2,284	26	87	310	330	619	268	497	106	31	-	10
Percent.....	100.0	1.1	3.8	13.6	14.4	27.1	11.7	21.8	4.6	1.4	-	.4
Finance, Ins. & Real Estate...	188	2	10	7	21	59	19	47	17	6	-	-
Percent.....	100.0	1.1	5.3	3.7	11.2	31.4	10.1	25.0	9.0	3.2	-	-
Services.....	2,487	25	107	177	317	904	305	469	122	45	-	16
Percent.....	100.0	1.0	4.3	7.1	12.7	36.3	12.3	18.9	4.9	1.8	-	.6
Total Public Sector- All Industries.....	2,488	42	141	141	241	726	343	611	176	57	-	10
Percent.....	100.0	1.7	5.7	5.7	9.7	29.2	13.8	24.6	7.1	2.3	-	.4

Table 5
STATE OF IOWA

SOURCE OF INJURY OR ILLNESS: NUMBER AND PERCENT DISTRIBUTION OF CASES, BY INDUSTRY DIVISION.
REPORTED CASES WHICH OCCURRED DURING 1979.

Industry Division	Total	Source of Injury or Illness									
		Boxes, Barrels, Containers	Chemicals	Hand Tools	Machines	Metal Items	Vehicles	Wood Items	Working Surfaces	All Other Classifiable	Non- Classifiable
<u>Total All Industries-</u> <u>Public & Private Sector.....</u>	20,778	2,050	257	1,729	1,481	3,195	1,345	556	2,633	6,881	651
Percent.....	100.0	9.9	1.2	8.3	7.1	15.4	6.5	2.7	12.7	33.1	3.1
<u>Total Private Sector-</u> <u>All Industries.....</u>	18,480	1,880	233	1,623	1,394	3,061	1,174	516	2,152	5,836	611
Percent.....	100.0	10.2	1.3	8.8	7.5	16.6	6.4	2.8	11.6	31.6	3.3
Agriculture, Forestry & Fish..	378	16	7	34	56	27	21	6	63	130	18
Percent.....	100.0	4.2	1.9	9.0	14.8	7.1	5.6	1.6	16.7	34.4	4.8
Mining.....	61	-	2	5	10	5	5	2	7	24	1
Percent.....	100.0	-	3.3	8.2	16.4	8.2	8.2	3.3	11.5	39.3	1.6
Construction.....	1,833	76	23	167	80	308	104	80	314	625	56
Percent.....	100.0	4.1	1.3	9.1	4.4	16.8	5.7	4.4	17.1	34.1	3.1
Manufacturing.....	11,036	1,119	161	1,141	1,003	2,315	531	302	942	3,126	396
Percent.....	100.0	10.1	1.5	10.3	9.1	21.0	4.8	2.7	8.5	28.3	3.6
Transportation & Public Util..	1,241	183	4	55	14	113	217	24	183	408	40
Percent.....	100.0	14.7	.3	4.4	1.1	9.1	17.5	1.9	14.7	32.9	3.2
Wholesale Trade.....	1,256	188	18	82	86	162	144	44	189	318	
Percent.....	100.0	15.0	1.4	6.5	6.8	12.9	11.5	3.5	15.0	25.3	2.0
Retail Trade.....	1,234	202	8	85	97	69	94	41	159	438	41
Percent.....	100.0	16.4	.6	6.9	7.9	5.6	7.6	3.3	12.9	35.5	3.3
Finance, Ins. & Real Estate...	91	5	1	5	4	3	12	2	32	24	3
Percent.....	100.0	5.5	1.1	5.5	4.4	3.3	13.2	2.2	35.2	26.4	3.3
Services.....	1,350	91	9	49	44	59	46	15	263	743	31
Percent.....	100.0	6.7	.7	3.6	3.3	4.4	3.4	1.1	19.5	55.0	2.3
<u>Total Public Sector-</u> <u>All Industries.....</u>	2,298	170	24	106	87	134	171	40	481	1,045	40
Percent.....	100.0	7.4	1.0	4.6	3.8	5.8	7.4	1.7	20.9	45.5	1.7

Table 6
STATE OF IOWA

SOURCE OF INJURY OR ILLNESS: NUMBER AND PERCENT DISTRIBUTION OF CASES, BY INDUSTRY DIVISION.
CASES RECEIVED DURING 1980.

Industry Division	Total	Source of Injury or Illness									
		Boxes, Barrels, Containers	Chemicals	Hand Tools	Machines	Metal Items	Vehicles	Wood Items	Working Surfaces	All Other Classifiable	Non- Classifiable
<u>Total All Industries-</u> <u>Public & Private Sector.....</u>	25,492	2,781	267	1,960	1,585	3,135	2,004	677	3,699	8,337	1,047
Percent.....	100.0	10.9	1.0	7.7	6.2	12.3	7.9	2.7	14.5	32.7	4.1
<u>Total Private Sector-</u> <u>All Industries.....</u>	23,004	2,568	248	1,831	1,479	3,023	1,783	630	3,150	7,307	985
Percent.....	100.0	11.2	1.1	8.0	6.4	13.1	7.8	2.7	13.7	31.8	4.3
Agriculture, Forestry & Fish..	662	45	11	52	93	24	59	16	122	216	24
Percent.....	100.0	6.8	1.7	7.9	14.0	3.6	8.9	2.4	18.4	32.6	3.6
Mining.....	123	4	-	3	16	18	16	2	14	42	8
Percent.....	100.0	3.3	-	2.4	13.0	14.6	13.0	1.6	11.4	34.1	6.5
Construction.....	3,168	110	47	297	123	530	139	151	602	1,005	164
Percent.....	100.0	3.5	1.5	9.4	3.9	16.7	4.4	4.8	19.0	31.7	5.2
Manufacturing.....	10,077	1,161	117	1,081	829	1,889	542	241	896	2,832	489
Percent.....	100.0	11.5	1.2	10.7	8.2	18.7	5.4	2.4	8.9	28.1	4.9
Transportation & Public Util..	1,996	293	14	86	26	128	440	62	335	542	70
Percent.....	100.0	14.7	.7	4.3	1.3	6.4	22.0	3.1	16.8	27.2	3.5
Wholesale Trade.....	2,019	312	20	110	132	234	238	69	322	512	70
Percent.....	100.0	15.5	1.0	5.4	6.5	11.6	11.8	3.4	15.9	25.4	3.5
Retail Trade.....	2,284	435	17	103	151	117	189	61	353	794	64
Percent.....	100.0	19.0	.7	4.5	6.6	5.1	8.3	2.7	15.5	34.8	2.8
Finance, Ins. & Real Estate...	188	27	3	11	10	2	20	4	50	57	4
Percent.....	100.0	14.4	1.6	5.9	5.3	1.1	10.6	2.1	26.6	30.3	2.1
Services.....	2,487	181	19	88	99	81	140	24	456	1,307	92
Percent.....	100.0	7.3	.8	3.5	4.0	3.3	5.6	1.0	18.3	52.6	3.7
<u>Total Public Sector-</u> <u>All Industries.....</u>	2,488	213	19	129	106	112	221	47	549	1,030	62
Percent.....	100.0	8.6	.8	5.2	4.3	4.5	8.9	1.9	22.1	41.4	2.5

Table 7
STATE OF IOWA

TYPE OF ACCIDENT OR EXPOSURE: NUMBER AND PERCENT DISTRIBUTION OF CASES, BY INDUSTRY DIVISION.
REPORTED CASES WHICH OCCURRED DURING 1979.

Industry Division	Total	Type of Accident or Exposure										
		Struck by or Struck Against	Fall	Caught In or Between	Rubbed or Abraded	Bodily Reaction	Over- Exertion	Contact with Temperature Extremes	Contact with Radiations, Caustics, Etc.	Motor Vehicle Accident	All Other Nonclassifiable	Non- Classifiable
Total All Industries- Public & Private Sector.....	20,778	4,822	3,214	2,078	817	1,952	5,747	576	607	316	183	466
Percent.....	100.0	23.2	15.5	10.0	3.9	9.4	27.7	2.8	2.9	1.5	.9	2.2
Total Private Sector- All Industries.....	18,480	4,409	2,695	1,908	766	1,647	5,192	520	525	241	134	443
Percent.....	100.0	23.9	14.6	10.3	4.1	8.9	28.1	2.8	2.8	1.3	.7	2.4
Agriculture, Forestry & Fish.....	378	100	79	65	15	27	51	3	16	7	5	10
Percent.....	100.0	26.5	20.9	17.2	4.0	7.1	13.5	.8	4.2	1.9	1.3	2.6
Mining.....	61	16	11	7	1	8	8	1	3	2	3	1
Percent.....	100.0	26.2	18.0	11.5	1.6	13.1	13.1	1.6	4.9	3.3	4.9	1.6
Construction.....	1,833	420	415	142	82	174	402	60	38	39	32	29
Percent.....	100.0	22.9	22.6	7.7	4.5	9.5	21.9	3.3	2.1	2.1	1.7	1.6
Manufacturing.....	11,036	2,803	1,194	1,278	531	876	3,319	281	362	35	39	318
Percent.....	100.0	25.4	10.8	11.6	4.8	7.9	30.1	2.5	3.3	.3	.4	2.9
Transportation & Public Util.....	1,241	219	225	92	22	177	359	19	19	79	15	15
Percent.....	100.0	17.6	18.1	7.4	1.8	14.3	28.9	1.5	1.5	6.4	1.2	1.2
Wholesale Trade.....	1,256	290	228	159	36	126	306	19	30	34	9	19
Percent.....	100.0	23.1	18.2	12.7	2.9	10.0	24.4	1.5	2.4	2.7	.7	1.5
Retail Trade.....	1,234	326	198	78	51	114	309	87	15	20	13	23
Percent.....	100.0	26.4	16.0	6.3	4.1	9.2	25.0	7.1	1.2	1.6	1.1	1.9
Finance, Ins. & Real Estate.....	91	13	36	5	1	11	12	-	1	9	-	3
Percent.....	100.0	14.3	39.6	5.5	1.1	12.1	13.2	-	1.1	9.9	-	3.3
Services.....	1,350	222	309	82	27	134	426	50	41	16	18	25
Percent.....	100.0	16.4	22.9	6.1	2.0	9.9	31.6	3.7	3.0	1.2	1.3	1.9
Total Public Sector- All Industries.....	2,298	413	519	170	51	305	555	56	82	75	49	23
Percent.....	100.0	18.0	22.6	7.4	2.2	13.3	24.2	2.4	3.6	3.3	2.1	1.0

Table 8
STATE OF IOWA

TYPE OF ACCIDENT OR EXPOSURE: NUMBER AND PERCENT DISTRIBUTION OF CASES, BY INDUSTRY DIVISION.
CASES RECEIVED DURING 1980.

Industry Division	Total	Type of Accident or Exposure										
		Struck by or Struck Against	Fall	Caught In or Between	Rubbed or Abraded	Bodily Reaction	Over-Exertion	Contact with Temperature Extremes	Contact with Radiations, Caustics, Etc.	Motor Vehicle Accident	All Other Classifiable	Non-Classifiable
Total All Industries- Public & Private Sector..... Percent.....	25,492 100.0	5,237 20.5	4,355 17.1	1,981 7.8	628 2.5	2,079 8.2	8,065 31.6	717 2.8	558 2.2	624 2.4	410 1.6	838 3.3
Total Private Sector- All Industries..... Percent.....	23,004 100.0	4,779 20.8	3,743 16.3	1,840 8.0	591 2.6	1,801 7.8	7,391 32.1	662 2.9	503 2.2	551 2.4	351 1.5	792 3.4
Agriculture, Forestry & Fish.. Percent.....	662 100.0	154 23.3	136 20.5	103 15.6	17 2.6	44 6.6	109 16.5	12 1.8	32 4.8	27 4.1	9 1.4	19 2.9
Mining..... Percent.....	123 100.0	24 19.5	20 16.3	17 13.8	7 5.7	12 9.8	25 20.3	2 1.6	2 1.6	4 3.3	5 4.1	5 4.1
Construction..... Percent.....	3,168 100.0	693 21.9	721 22.8	173 5.5	96 3.0	276 8.7	802 25.3	97 3.1	68 2.1	45 1.4	74 2.3	123 3.9
Manufacturing..... Percent.....	10,077 100.0	2,304 22.9	1,098 10.9	970 9.6	322 3.2	681 6.8	3,593 35.7	271 2.7	238 2.4	80 .8	99 1.0	421 4.2
Transportation & Public Util.. Percent.....	1,996 100.0	308 15.4	410 20.5	124 6.2	18 .9	205 10.3	564 28.3	29 1.5	23 1.2	224 11.2	48 2.4	43 2.2
Wholesale Trade..... Percent.....	2,019 100.0	412 20.4	372 18.4	194 9.6	36 1.8	155 7.7	616 30.5	38 1.9	39 1.9	74 3.7	30 1.5	53 2.6
Retail Trade..... Percent.....	2,284 100.0	518 22.7	417 18.3	125 5.5	60 2.6	184 8.1	689 30.2	143 6.3	33 1.4	38 1.7	30 1.3	47 2.1
Finance, Ins. & Real Estate... Percent.....	188 100.0	20 10.6	55 29.3	8 4.3	2 1.1	24 12.8	52 27.7	- -	3 1.6	14 7.4	7 3.7	3 1.6
Services..... Percent.....	2,487 100.0	346 13.9	514 20.7	126 5.1	33 1.3	220 8.8	941 37.8	70 2.8	65 2.6	45 1.8	49 2.0	78 3.1
Total Public Sector- All Industries..... Percent.....	2,488 100.0	458 18.4	612 24.6	141 5.7	37 1.5	278 11.2	674 27.1	55 2.2	55 2.2	73 2.9	59 2.4	46 1.8

Table 9
STATE OF IOWA

OCCUPATION OF INJURED OR ILL WORKERS: NUMBER AND PERCENT DISTRIBUTION OF CASES, BY INDUSTRY DIVISION.
REPORTED CASES WHICH OCCURRED DURING 1979.

Occupation ^{1/}	Total Private & Public Sector	Private Sector Industry Division									Public Sector
		Agriculture Forestry & Fishing	Mining	Con- struction	Manu- facturing	Trans- portation, & Public Utilities	Wholesale Trade	Retail Trade	Finance, Ins. & Real Estate	Services	
Total.....	20,778	378	61	1,833	11,036	1,241	1,256	1,234	91	1,350	2,298
Percent.....	100.0	100.0	100.0	100.0	100.0	100.0	100.0	100.0	100.0	100.0	100.0
Professional, Technical, & Kindred Workers.....	380	6	-	3	35	7	6	2	-	124	197
Percent.....	1.8	1.6	-	.2	.3	.6	.5	.2	-	9.2	8.6
Managers & Administrators, Except Farm.....	525	3	1	51	99	16	68	138	11	46	92
Percent.....	2.5	.8	1.6	2.8	.9	1.3	5.4	11.2	12.1	3.4	4.0
Salesworkers.....	151	-	-	1	13	1	27	77	13	5	14
Percent.....	.7	-	-	.1	.1	.1	2.1	6.2	14.3	.4	.6
Clerical & Kindred Workers...	601	-	-	7	215	59	38	71	37	59	115
Percent.....	2.9	-	-	.4	1.9	4.8	3.0	5.8	40.7	4.4	5.0
Craftsmen & Kindred Workers..	3,452	3	20	990	1,190	288	216	198	12	106	429
Percent.....	16.6	.8	32.8	54.0	10.8	23.2	17.2	16.0	13.2	7.9	18.7
Operatives, Exc. Transport...	6,446	3	13	61	5,962	27	127	130	1	77	45
Percent.....	31.0	.8	21.3	3.3	54.0	2.2	10.1	10.5	1.1	5.7	2.0
Transport Equip. Operatives..	1,501	-	14	62	483	491	247	67	-	36	101
Percent.....	7.2	-	23.0	3.4	4.4	39.6	19.7	5.4	-	2.7	4.4
Laborers, Except Farm.....	5,122	24	11	649	2,809	334	478	267	9	135	406
Percent.....	24.7	6.3	18.0	35.4	25.5	26.9	38.1	21.6	9.9	10.0	17.7
Farmers & Farm Managers.....	16	13	-	-	1	-	-	-	-	1	1
Percent.....	.1	3.4	-	-	*	-	-	-	-	.1	*
Farm Laborers & Foremen.....	351	320	-	1	4	-	22	1	-	-	3
Percent.....	1.7	84.7	-	.1	*	-	1.8	.1	-	-	.1
Service Workers Except Private Household.....	2,157	3	1	3	195	15	16	274	8	751	891
Percent.....	10.4	.8	1.6	.2	1.8	1.2	1.3	22.2	8.8	55.6	38.8
Private Household Workers....	4	1	-	-	-	-	-	-	-	3	-
Percent.....	*	.3	-	-	-	-	-	-	-	.2	-
Nonclassifiable.....	72	2	1	5	30	3	11	9	-	7	4
Percent.....	.3	.5	1.6	.3	.3	.2	.9	.7	-	.5	.2

Table 10
STATE OF IOWA
OCCUPATION OF INJURED OR ILL WORKERS: NUMBER AND PERCENT DISTRIBUTION OF CASES, BY INDUSTRY DIVISION.
CASES RECEIVED DURING 1980.

Occupation ^{1/}	Total Private & Public Sector	Private Sector Industry Division									Public Sector
		Agriculture Forestry & Fishing	Mining	Con- struction	Manu- facturing	Trans- portation, & Public Utilities	Wholesale Trade	Retail Trade	Finance, Ins. & Real Estate	Services	
Total.....	25,492	662	123	3,168	10,077	1,996	2,019	2,284	188	2,487	2,488
Percent.....	100.0	100.0	100.0	100.0	100.0	100.0	100.0	100.0	100.0	100.0	100.0
Professional, Technical, & Kindred Workers.....	560	10	-	7	34	9	9	4	2	233	252
Percent.....	2.2	1.5	-	.2	.3	.5	.4	.2	1.1	9.4	10.1
Managers & Administrators Except Farm.....	753	3	6	75	110	23	108	233	21	63	111
Percent.....	3.0	.5	4.9	2.4	1.1	1.2	5.3	10.2	11.2	2.5	4.5
Salesworkers.....	357	2	-	6	34	2	91	188	20	9	5
Percent.....	1.4	.3	-	.2	.3	.1	4.5	8.2	10.6	.4	.2
Clerical & Kindred.....	753	2	-	9	192	66	48	118	73	110	135
Percent.....	3.0	.3	-	.3	1.9	3.3	2.4	5.2	38.8	4.4	5.4
Craftsmen & Kindred Workers.	4,839	10	41	1,878	1,114	369	422	354	12	201	438
Percent.....	19.0	1.5	33.3	59.3	11.1	18.5	20.9	15.5	6.4	8.1	17.6
Operatives, Exc. Transport..	6,043	8	35	96	5,255	57	160	223	2	166	41
Percent.....	23.7	1.2	28.5	3.0	52.1	2.9	7.9	9.8	1.1	6.7	1.6
Transport Equipment Operatives.....	2,555	13	27	105	602	1,056	410	126	2	72	142
Percent.....	10.0	2.0	22.0	3.3	6.0	52.9	20.3	5.5	1.1	2.9	5.7
Laborers, Except Farm.....	5,592	69	14	972	2,490	374	690	393	8	212	370
Percent.....	21.9	10.4	11.4	30.7	24.7	18.7	34.2	17.2	4.3	8.5	14.9
Farmers & Farm Managers.....	31	26	-	-	1	1	1	1	-	-	1
Percent.....	.1	3.9	-	-	*	.1	*	*	-	-	*
Farm Laborers & Foremen.....	589	515	-	3	4	4	45	11	-	1	6
Percent.....	2.3	77.8	-	.1	*	.2	2.2	.5	-	*	.2
Service Workers Except Private Household.....	3,306	3	-	8	209	31	28	615	46	1,397	969
Percent.....	13.0	.5	-	.3	2.1	1.6	1.4	26.9	24.5	56.2	38.9
Private Household Workers...	6	1	-	-	-	-	-	-	-	5	-
Percent.....	*	.2	-	-	-	-	-	-	-	.2	-
Nonclassifiable.....	108	-	-	9	32	4	7	18	2	18	18
Percent.....	.4	-	-	.3	.3	.2	.3	.8	1.1	.7	.7

Table 11
STATE OF IOWA
DISTRIBUTION OF INJURIES AND ILLNESSES
AND EMPLOYMENT - BY INDUSTRY DIVISION
1979 - 1980

1979				
Industry Division	Employment ^{1/}		Injuries & Illnesses ^{2/}	
	Number	Percent	Number	Percent
TOTAL PRIVATE SECTOR.....	976,900	100.0%	18,480	100.0%
Agric., Forestry & Fishing....	49,800	5.1	378	2.1
Mining.....	2,600	.3	61	.3
Construction.....	59,900	6.1	1,833	9.9
Manufacturing.....	259,800	26.6	11,036	59.7
Transportation & Public Util..	58,200	6.0	1,241	6.7
Wholesale Trade.....	76,100	7.8	1,256	6.8
Retail Trade.....	210,300	21.5	1,234	6.7
Finance, Ins. & Real Estate...	56,800	5.8	91	.5
Services.....	203,400	20.8	1,350	7.3
TOTAL PUBLIC SECTOR ^{3/}	184,600	100.0%	2,298	100.0%

1980				
Industry Division	Employment ^{1/}		Injuries & Illnesses ^{4/}	
	Number	Percent	Number	Percent
TOTAL PRIVATE SECTOR.....	936,500	100.0%	23,004	100.0%
Agric., Forestry & Fishing....	42,000	4.5	662	2.9
Mining.....	2,300	.3	123	.5
Construction.....	47,400	5.1	3,168	13.8
Manufacturing.....	243,500	26.0	10,077	43.8
Transportation & Public Util..	55,500	5.9	1,996	8.7
Wholesale Trade.....	76,600	8.2	2,019	8.8
Retail Trade.....	203,800	21.7	2,284	9.9
Finance, Ins. & Real Estate...	57,700	6.1	188	.8
Services.....	207,700	22.2	2,487	10.8
TOTAL PUBLIC SECTOR ^{3/}	185,400	100.0%	2,488	100.0%

^{1/} Annual average employment for nonfarm industries is based on the establishment survey conducted by the Iowa Department of Job Service in cooperation with the U. S. Department of Labor, Bureau of Labor Statistics. Annual average employment for the agriculture, forestry and fishing division is a composite of estimates from the establishment survey and estimates provided by the U. S. Department of Agriculture.

^{2/} Reported cases which occurred during the year.

^{3/} State and local government; excludes federal government.

^{4/} Reported cases received during the year.

Table 12
STATE OF IOWA
WORK RELATED EMPLOYEE DEATHS
BY INDUSTRY DIVISION
1979 - 1980

Industry Division	1979		1980		Total 1979-1980	
	Num- ber	Per- cent	Num- ber	Per- cent	Num- ber	Per- cent
TOTAL PRIVATE SECTOR.....	102	100.0%	85	100.0%	187	100.0%
Agric., Forestry & Fishing....	5	4.9	9	10.6	14	7.5
Mining.....	2	2.0	2	2.4	4	2.1
Construction.....	32	31.3	21	24.7	53	28.4
Manufacturing.....	15	14.7	15	17.6	30	16.1
Transportation & Public Util..	21	20.6	14	16.5	35	18.7
Wholesale Trade.....	10	9.8	11	12.9	21	11.2
Retail Trade.....	6	5.9	3	3.5	9	4.8
Finance, Ins. & Real Estate...	2	2.0	2	2.4	4	2.1
Services.....	9	8.8	8	9.4	17	9.1
TOTAL PUBLIC SECTOR.....	12	100.0%	7	100.0%	19	100.0%

Table 13
STATE OF IOWA
WORK RELATED EMPLOYEE FATALITIES
BY CAUSE OF DEATH
1979 - 1980

Cause of Death	1979		1980		Total 1979-1980	
	Num- ber	Per- cent	Num- ber	Per- cent	Num- ber	Per- cent
Subject to IOSHA/OSHA control:						
Crushing injuries.....	18	15.8%	20	21.6%	38	18.4%
Electrocution.....	13	11.4	4	4.4	17	8.3
Suffocation.....	3	2.6	3	3.3	6	2.9
Falls.....	12	10.5	10	10.8	22	10.7
Struck by object.....	4	3.5	5	5.4	9	4.4
Caught in, under or between...	4	3.5	1	1.1	5	2.4
Drowning.....	3	2.6	2	2.2	5	2.4
Poisoning.....	1	.9	-	-	1	.5
Burns.....	2	1.8	2	2.2	4	1.9
Explosion.....	1	.9	1	1.1	2	1.0
Occupational illness.....	1	.9	1	1.1	2	1.0
	62	54.4%	49	53.2%	111	53.9%
Not controllable by IOSHA/OSHA:						
Vehicle accident.....	32	28.1	26	28.3	58	28.2
Heart attack.....	11	9.6	8	8.7	19	9.2
Gun shot/stabbing/assault.....	4	3.5	2	2.2	6	2.9
Air crash.....	2	1.8	5	5.4	7	3.4
Other medical & health cond...	3	2.6	2	2.2	5	2.4
	52	45.6%	43	46.8%	95	46.1%
TOTAL.....	114	100.0%	92	100.0%	206	100.0%

Table 14
STATE OF IOWA
DISTRIBUTION OF WORK RELATED EMPLOYEE DEATHS
AND EMPLOYMENT - BY INDUSTRY DIVISION
1979 - 1980

Industry Division	Employment ^{1/}		Deaths	
	Number	Percent	Number	Percent
TOTAL PRIVATE SECTOR.....	976,900	100.0%	102	100.0%
Agric., Forestry & Fishing....	49,800	5.1	5	4.9
Mining.....	2,600	.3	2	2.0
Construction.....	59,900	6.1	32	31.3
Manufacturing.....	259,800	26.6	15	14.7
Transportation & Public Util..	58,200	6.0	21	20.6
Wholesale Trade.....	76,100	7.8	10	9.8
Retail Trade.....	210,300	21.5	6	5.9
Finance, Ins. & Real Estate...	56,800	5.8	2	2.0
Services.....	203,400	20.8	9	8.8
TOTAL PUBLIC SECTOR.....	184,600	100.0%	12	100.0%

Industry Division	Employment ^{1/}		Deaths	
	Number	Percent	Number	Percent
TOTAL PRIVATE SECTOR.....	936,500	100.0%	85	100.0%
Agric., Forestry & Fishing....	42,000	4.5	9	10.6
Mining.....	2,300	.3	2	2.4
Construction.....	47,400	5.1	21	24.7
Manufacturing.....	243,500	26.0	15	17.6
Transportation & Public Util..	55,500	5.9	14	16.5
Wholesale Trade.....	76,600	8.2	11	12.9
Retail Trade.....	203,800	21.7	3	3.5
Finance, Ins. & Real Estate...	57,700	6.1	2	2.4
Services.....	207,700	22.2	8	9.4
TOTAL PUBLIC SECTOR.....	185,400	100.0%	7	100.0%

^{1/} Annual average employment for nonfarm industries is based on the establishment survey conducted by the Iowa Department of Job Service in cooperation with the U. S. Department of Labor, Bureau of Labor Statistics. Annual average employment for the agriculture, forestry and fishing division is a composit of estimates from the establishment survey and estimates provided by the U. S. Department of Agriculture.

Technical Notes

Reporting Requirements

Regulations issued under the Iowa Occupational Safety and Health Act require employers to report certain occupational injuries and occupational illnesses.

In 1979, employers were required to report directly to the Iowa Bureau of Labor all work injuries or illnesses that resulted in two or more lost workdays. State of Iowa Form No. L-1/WC-1 was to be used, and was to be filed with the Bureau of Labor as early as practicable but no later than six working days after receiving information that an occupational injury or illness would result in two or more lost workdays. Copies of the Supplementary Record of Occupational Injuries and Illness were acceptable reports.

Beginning in 1980, employers are required to report in writing to the Iowa Industrial Commissioner any occupational injury or illness which temporarily disables an employee for more than three days or which results in permanent total disability, permanent partial disability, or death. State of Iowa Form No. L-1/WC-1 is to be used, and is to be filed with the Iowa Industrial Commissioner within four days from the event when the injury or illness is alleged by the worker to have been sustained in the course of his or her employment. A report to the Industrial Commissioner is considered to be a report to the Iowa Bureau of Labor. The Iowa Industrial Commissioner forwards all such reports to the Iowa Bureau of Labor.

In addition, employers must report directly to the Iowa Labor Commissioner within 48 hours each accident or health hazard that results in one or more fatalities or hospitalization of five or more employees.

Scope of the Data

The tables for 1979 include all occupational injuries and illnesses which occurred during the year and which involved two or more lost workdays excluding the day of injury, or which resulted in death.

The tables for 1980 include all cases which were received during the year involving death, permanent disability, or more than three calendar days of disability beyond the day of injury.

Industrial Classification

Industrial classification conforms to the definitions included in the Standard Industrial Classification Manual (SIC), 1972 Edition, prepared by the Statistical Policy Division of the Office of Management and Budget.

Coding of Injury or Illness Characteristics

Occupational injuries and illnesses reported to the Iowa Bureau of Labor are coded for their characteristics according to the American National Standards Institute Z16.2 (1962) Method of Recording Basic Facts Relating to the Nature and Occurrence of Work Injuries, as modified by BLS.

Federal-State Cooperation

Work injury and illness data are collected, coded, and tabulated by the Iowa Bureau of Labor in cooperation with the U. S. Department of Labor, Bureau of Labor Statistics as part of the Supplementary Data System. The Supplementary Data System provides a means of securing information about the factors associated with accidents and exposures in the workplace. Such information is useful in helping direct measures to reduce the incidence of occupational injuries and illnesses.

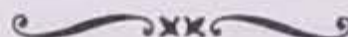


Table 15
MATERIALS AVAILABLE FROM THE
RESEARCH AND STATISTICS DIVISION
OF THE IOWA BUREAU OF LABOR

The following recordkeeping and reporting forms and aids are available at no charge upon request from the Iowa Bureau of Labor.

<u>Items Available</u>	<u>Number Distributed 1979-1980</u>
Booklet, "Recordkeeping Requirements under the Occupational Safety and Health Act of 1970".....	4,377
Iowa Form No. L-1/WC-1 "Employers Work Injury Report". (Substitute for OSHA Form No. 101, Supplementary Record of Occupational Injuries and Illnesses).....	124,722
OSHA Form No. 200, "Log and Summary of Occupational Injuries and Illnesses".....	25,589
IOSH Form 30, Poster, "Safety and Health Protection on the Job". (Available in English or Spanish.).....	10,899
BLS Report 412, "What Every Employer Needs to Know about OSHA Recordkeeping".....	1,841
Iowa "Recordkeeping, Reporting and Posting Requirement Handbook".....	1,604
"A Guide to Evaluating Your Firm's Injury and Illness Experience". (Separate guides are available for the following industries: Construction; Manufacturing; Transportation and Public Utilities; Wholesale and Retail Trade; and Services.).....	2,373

The staff of the Research and Statistics Division and of the Education Division have made themselves available for conducting seminars on the recordkeeping and reporting requirements for both employer and employee groups. Requests for such sessions should be made in writing to the Iowa Bureau of Labor, allowing sufficient time for scheduling of the meetings.

WAGE AND WORKPLACE STANDARDS DIVISION



Michael J. Burdette
Director



Olga Duran
Administrative
Assistant II



Michael B. Hassett
Hearings Compliance
Officer I



Arlene Kockler
Secretary I

The Wage and Workplace Standards Division is responsible for administering and enforcing six laws affecting the employment conditions of individuals within the State. Under the provisions of the Iowa Wage Payment Collection Law, Chapter 91A, Code of Iowa, the Division investigates complaints for unpaid wages received from employees, and if a determination is made that the claim is enforceable, the Division attempts to settle the matter with the aggrieved employee and employer. If a settlement is not effected, suit is filed against the employer to effect collection and enforce the provisions of the statute.

Under the provisions of the Iowa Child Labor Law, Chapter 92, Code of Iowa, the Division investigates complaints and reported work-related injuries involving the employment of children under eighteen years of age. The Division also advises and assists child labor work permit issuing officers with the local schools and Job Service of Iowa offices in properly issuing work permits to children within the scope and limitations of the Child Labor Law.

Pursuant to Chapters 94 and 95, Code of Iowa, Iowa's Private Employment Agency Licensing Laws, the Division assists the State Employment Agency License Commission in licensing and regulating private employment agencies operating within the State of Iowa. The Division insures that each agency complies with the statutes and administrative rules, and investigates and resolves complaints from affected employees and employers against private employment agencies.

The Division is also responsible for inspecting temporary labor camps located within the State for compliance with the regulations adopted under the Iowa Occupational Safety and Health Act, Chapter 88, Code of Iowa. Each camp is inspected to insure that occupants are receiving adequate living and sanitary facilities.

Under Section 327F.37, Code of Iowa, the Division inspects the temporary living and sanitary facilities provided by railroads for their employees who must travel and work in the State.

Table 1
STATE OF IOWA
REPORT OF LICENSES ISSUED
AND FEES COLLECTED
PRIVATE EMPLOYMENT AGENCIES
FISCAL YEARS 1979-1980^{1/}

	FY 1979	FY 1980	Total 1979 & 1980
Number of licenses issued...	89	95	184
Licenses fees collected ^{2/} ...	\$6,675.00	\$7,125.00	\$13,800.00

^{1/} July 1, 1978, through June 30, 1979, and July 1, 1979, through June 30, 1980.

^{2/} Annual license fee is \$75.00.

Table 2
STATE OF IOWA
WAGE COLLECTION CASES INITIATED
ON BEHALF OF CLAIMANTS
FISCAL YEARS 1979-1980

Activity	July 1, 1978 - June 30, 1979		July 1, 1979 - June 30, 1980	
	Number of Claims	Amount Claimed	Number of Claims	Amount Claimed
Information requests ^{1/} ...	1,814		1,913	
Invalid claims ^{2/}	22		35	
Wage claims received and docketed ^{3/}	952	\$504,757.70	1,032	\$508,162.02
Claims denied ^{4/}	400	222,663.40	417	252,291.14
Uncollectable ^{5/}	68	33,595.19	78	39,075.46
Claims settled before petition ^{6/}	387	85,566.28	378	108,550.88
Claims settled after petition ^{7/}	26	6,265.58	97	51,979.88
Court actions				
Petitions filed ^{8/}	173	\$106,542.77	274	\$227,800.18
Dismissals ^{9/}	9	2,086.61	6	1,543.15
Judgements ^{10/}	76	30,327.32	128	103,001.63
Satisfied ^{11/}	33	5,482.17	43	15,195.95
Unsatisfied ^{12/}	36	23,453.58	83	68,755.80
Total collections ^{13/}	458	97,314.03	506	175,726.81
Active cases ^{14/}	409	462,785.44	339	433,363.35

See footnotes on next page.

Table 2 - Footnotes
STATE OF IOWA
WAGE COLLECTION CASES INITIATED
ON BEHALF OF CLAIMANTS
FISCAL YEARS 1979 - 1980
FOOTNOTES

- 1/ Information requests - Number of wage complaint forms given to potential complainants.
- 2/ Invalid claims - Those complaints that are deficient on the face of the form.
- 3/ Wage claims received and docketed - Complaints that appear to be valid. Therefore, an attempt to contact the employer is made to elicit a statement of the employer's position.
- 4/ Claims denied - Encompasses all reasons for denying a complaint, except a failure to locate the employer, employer insolvency, or a dismissal of a suit.
- 5/ Uncollectable - Claims that are denied because of our inability to locate the employer or because of the insolvency of the employer.
- 6/ Claims settled before petition - All complaints upon which payment is received prior to filing suit.
- 7/ Claims settled after petition - All complaints upon which payment is received subsequent to filing suit.
- 8/ Petitions filed - Number of lawsuits filed.
- 9/ Dismissals - Lawsuits dismissed after hearing by the court.
- 10/ Judgements - Lawsuits won by default or after hearing.
- 11/ Satisfied - Judgements that are collected.
- 12/ Unsatisfied - Judgements that are not collected.
- 13/ Total collections represent all cases for which monies have been collected on behalf of the complainant.
- 14/ Cases unresolved as of the fiscal year shown.

Table 3
STATE OF IOWA
NUMBER OF CERTIFICATES OF AGE,
WORK PERMITS, STREET TRADES PERMITS,
AND MIGRANT WORK PERMITS
CALENDAR YEARS 1979-1980

Month	Certificates of Age ^{1/}		Work Permits ^{2/}		Street Trades Permits ^{3/4/}		Migrant Work Permits ^{5/}		Total Permits & Certificates	
	1979	1980	1979	1980	1979	1980	1979	1980	1979	1980
January...	140	175	147	368	301	340	0	0	588	883
February...	185	241	139	245	279	325	0	0	603	811
March.....	318	492	492	293	161	204	0	0	971	989
April.....	368	501	394	349	184	264	0	0	946	1,114
May.....	477	493	402	457	352	320	0	0	1,231	1,270
June.....	1,623	1,493	1,872	1,383	621	255	0	0	4,116	3,131
July.....	1,485	1,831	1,359	1,429	518	382	13	0	3,375	3,642
August....	810	885	883	531	476	523	17	6	2,186	1,945
September.	709	352	448	204	398	171	0	0	1,555	727
October...	485	503	407	315	595	422	0	0	1,487	1,240
November..	344	802	425	409	203	527	13	0	985	1,738
December..	301	363	265	185	322	268	0	0	888	816
TOTAL.....	7,245	8,131	7,233	6,168	4,410	4,001	43	6	18,931	18,306

^{1/} Ages 16 and above.

^{2/} Ages 14 and 15.

^{3/} Ages 10 to 16.

^{4/} Newscarriers.

^{5/} Migrant Laborers.

APPENDIX

STATE OF IOWA
SUMMARY OF WORK RELATED DEATHS
1979 AND 1980

STATE OF IOWA
SUMMARY OF WORK RELATED DEATHS
1979

<u>No.</u>	<u>Date</u>	<u>Industry</u>	<u>Occupation</u>	<u>Age</u>	<u>Cause of Death</u>
1.	1-01-79	Amuse. & Rec. Services	Snowmaker	20	Crushed
The employee was operating a bulldozer removing snow from a parking lot. He was run over and crushed by the bulldozer.					
2.	1-02-79	General Building Contractor	Vice President	44	Caught In
The employee was watching a sweep auger on an unloader after he had freed it when it had been stuck. A piece of his clothing caught pulling him into the auger.					
3.	1-05-79	Special Trade Contractor	Crane Operator	59	Struck By
4.	1-05-79	Special Trade Contractor	Laborer	20	Struck By
Two employees died of head injuries when a 5-ton pipe fell 240 feet from where it was stored overhead. The pipe struck the crane operated by the first victim, crushing the cab. The pipe then slid down and crushed the second victim. Two other workers were hospitalized with injuries suffered in the accident.					
5.	1-12-79	General Building Contractor	Ironworker Foreman	47	Crushed
The employee died of a broken neck and back when a nine-ton tire molding press fell pinning him between the door and the press. The press had been placed on rollers and was being moved from the loading dock to inside the plant when the accident occurred.					
6.	1-15-79	Miscellaneous Repair Services	Serviceman	55	Stroke
The employee became ill while at work. He was admitted to the hospital with high blood pressure and died later of a stroke.					
7.	2-02-79	Rubber & Misc. Plastics Prod.	Tire Builder	56	Lung Cancer
The employee died of lung cancer. The diagnosis was small cell anaplastic carcinoma of the lung with metastatic carcinoma of the liver with hepatic failure.					
8.	2-02-79	Machinery Exc. Electrical	Blaster Operator	22	Crushed
The employee was loading a large mold from a blaster to a table using a hoist. When the hoist was unhooked the mold became unstable, falling over and crushing the victim against the wall of a blaster.					

STATE OF IOWA
SUMMARY OF WORK RELATED DEATHS
1979 - Continued

<u>No.</u>	<u>Date</u>	<u>Industry</u>	<u>Occupation</u>	<u>Age</u>	<u>Cause of Death</u>
9.	2-16-79	Ag. Production - Crops	Hired Man	63	Heart Attack
The employee died of a heart attack while driving a tractor clearing snow.					
10.	2-18-79	State Government	Corrections Officer	62	Fall
The employee slipped and fell from a catwalk 30 feet to the floor below. He died of a fractured skull and multiple injuries.					
11.	2-18-79	Eating & Drinking Places	Waitress	17	Gun Shot
The employee was shot and killed while at work.					
12.	2-19-79	Trucking & Warehousing	Driver	30	Vehicle Accident
The employee was driving a semi which overturned. The employee was thrown out and pinned under the cab.					
13.	2-21-79	Food & Kindred Products	Fork Lift Operator	48	Crushed
The employee was using a forklift to unload a pallet of material from the back of a truck. The truck rolled forward causing the forklift to fall off the back of the truck. The employee was pinned between the dock and the truck and died of crushing injuries to the head and torso.					
14.	2-23-79	Local Government	County Health Nurse	44	Vehicle Accident
The employee died of injuries suffered when her car collided with another vehicle while she was making her normal rounds.					
15.	2-26-79	Trucking & Warehousing	Truck Driver	40	Vehicle Accident
The employee died of head injuries when his truck was involved in an accident with another vehicle.					
16.	2-26-79	Heavy Construction Contractor	Laborer	32	Electrocution
The employee was helping move railroad ties holding the choker cable of a crane to guide the load. The crane operator raised the boom into an electrical line and the current traveled down the cable electrocuting the employee.					

STATE OF IOWA
SUMMARY OF WORK RELATED DEATHS
1979 - Continued

<u>No.</u>	<u>Date</u>	<u>Industry</u>	<u>Occupation</u>	<u>Age</u>	<u>Cause of Death</u>
17.	2-26-79	Special Trade Contractor	Painter	63	Heart Attack
The employee was hanging wallpaper when he suffered a heart attack.					
18.	3-01-79	Trucking & Warehousing	Road Driver	53	Vehicle Accident
The employee was driving a truck in dense fog when he collided with a moving train.					
19.	3-06-79	General Building Contractor	Carpenter Foreman	46	Medical Complic.
The employee fell and cut his knee while on the job 2-23-79. He developed a blood clot and died on 3-6-79.					
20.	3-12-79	Membership Organization	Secy. & Club Mgr.	43	Gun Shot
The employee was found shot to death at the office where he had been working.					
21.	3-22-79	Auto Repair Svcs. & Garages	Mechanics Helper	47	Heart Attack
The employee died of a heart attack while getting ready to back a truck into the garage.					
22.	3-23-79	Transportation by Air	Pilot	37	Air Crash
23.	3-23-79	Transportation by Air	Pilot	24	Air Crash
Both employees died of multiple injuries suffered when their plane crashed.					
24.	3-27-79	Wholesale Trade-Durables	Truck Driver	29	Crushed
The employee was loading a paper bin full of paper cards and other materials onto the back of a truck when the bin started to fall. As the employee tried to get out of the way he slipped and fell on the ice and the bin fell on his head.					
25.	3-28-79	Wholesale Trade-Durables	Truck Driver	50	Vehicle Accident
The employee was driving a truck which was involved in an accident.					

STATE OF IOWA
SUMMARY OF WORK RELATED DEATHS
1979 - Continued

<u>No.</u>	<u>Date</u>	<u>Industry</u>	<u>Occupation</u>	<u>Age</u>	<u>Cause of Death</u>
26.	3-30-79	Trucking & Warehousing	Truck Driver	24	Vehicle Accident
The employee was standing beside his disabled truck well off the traveled portion of the highway when he was struck by a passing car. He died of massive head and internal injuries.					
27.	4-09-79	Business Services	Sign Installer	23	Electrocution
The employee fell 35 feet to the ground as he was descending on a ladder from a billboard he was helping to erect. He had been two feet from a 7,200 volt power line at the point where he fell. An autopsy later indicated that he had been electrocuted.					
28.	4-10-79	General Building Contractor	Superintendent	46	Heart Attack
The employee was walking from his vehicle to the building when he suffered a heart attack.					
29.	4-11-79	Wholesale Trade-Durables	Warehouse Worker	18	Crushed
The employee died of neck injuries when the forklift he was operating overturned on him as he turned a corner.					
30.	4-14-79	Eating & Drinking Places	Bartender & Hostess	30	Assault
The employee died of head injuries after being beaten during a robbery.					
31.	4-16-79	Wholesale Trade-Nondurables	Warehouseperson	18	Crushed
The employee died of crushing injuries after a forklift overturned on him when he turned it too sharply.					
32.	4-17-79	Local Government	Town Electrician	21	Electrocution
The employee was hanging a transformer using a wrench to remove a primary wire when he came in contact with a "hot" wire.					

STATE OF IOWA
SUMMARY OF WORK RELATED DEATHS
1979 - Continued

<u>No.</u>	<u>Date</u>	<u>Industry</u>	<u>Occupation</u>	<u>Age</u>	<u>Cause of Death</u>
33.	4-23-79	Heavy Construction Contractor	Crew Leader	25	Fall
The employee fell 200 feet to his death as he was removing a steel member from a microwave tower. Apparently a loosened nut let go allowing the steel member to pivot away from the tower. The employee had the safety lanyard wrapped around this member and the lanyard slipped off the end allowing him to fall.					
34.	4-25-79	Wholesale Trade-Nondurables	Truck Driver	71	Vehicle Accident
The employee failed to make a curve as he was driving his truck and drove into a ditch.					
35.	4-25-79	General Building Contractor	Light Oper.-Iron	29	Fall
The employee died of massive head injuries when he fell 35 feet to a concrete floor below. The employee had been working on a catwalk and jumped 4 feet to the roof below. The roof gave way allowing him to fall to the concrete floor.					
36.	5-05-79	Heavy Construction Contractor	Pipefitter Foreman	30	Fall
The employee was attempting to board an overhead crane when he became trapped between the crane cab railing and the stationary platform railing as the crane moved forward. The crane moved away and the employee fell 17 feet to the concrete floor below incurring head injuries. The accident occurred on 4-16-79 and the employee died on 5-5-79.					
37.	5-09-79	Special Trade Contractor	Apprentice Lineman	29	Electrocution
The employee was electrocuted when the boom of the digger truck he was operating came in contact with a 7.6 KV line. He had been working with a crew leaning existing poles out of the way in order to dig pole holes for a new power line.					
38.	5-12-79	Trucking & Warehousing	Truck Driver	33	Vehicle Accident
The employee died of burns suffered when his semi-truck collided head-on with a pick-up truck.					
39.	5-14-79	Machinery Exc. Electrical	Production Worker	21	Struck By
The employee was aligning a punch and die on a punch press. Apparently the die was misaligned and when the press was activated a half-inch piece of steel broke off and struck the employee in the neck severing a main artery.					

STATE OF IOWA
SUMMARY OF WORK RELATED DEATHS
1979 - Continued

<u>No.</u>	<u>Date</u>	<u>Industry</u>	<u>Occupation</u>	<u>Age</u>	<u>Cause of Death</u>
40.	5-21-79	Nonmetallic Metals, Exc. Fuel	Truck Driver	19	Suffocation
The employee was operating an endloader when the brakes failed and the end-loader rolled down a 150 foot embankment. The employee jumped from the vehicle and was buried by a rockslide.					
41.	5-23-79	Special Trade Contractor	Sheet Metal Worker	24	Fall
The employee was working with a crew of men cutting a hole in roof decking to install a new ventilation system. He attempted to kick the metal out and fell through the hole 65 feet to the floor below.					
42.	5-27-79	Miscellaneous Services	Architect	40	Vehicle Accident
The employee was involved in a single car accident as he was returning from an open house.					
43.	5-31-79	Heavy Construction Contractor	Cat Operator	46	Crushed
The employee was changing the fuel filter on a bulldozer when the loader fell, pinning his head between the hydraulic arm and the bulldozer.					
44.	6-07-79	Wholesale Trade-Nondurables	Salesman	66	Fall
The employee fell off a loading dock and struck his head. He was injured on 4-26-79 and died on 6-7-79.					
45.	6-11-79	Heavy Construction Contractor	Laborer	20	Electrocution
The employee was helping erect a pole building when he came in contact with a power line.					
46.	6-11-79	Special Trade Contractor	App. Plumber	26	Drowned
The employee was attempting to find an air leak in a pipe connected to a swimming pool filter. His body was found later at the bottom of the pool.					
47.	6-12-79	General Building Contractor	Carpenter	68	Heart Attack
The employee was sitting down resting when he suffered a heart attack.					

STATE OF IOWA
SUMMARY OF WORK RELATED DEATHS
1979 - Continued

<u>No.</u>	<u>Date</u>	<u>Industry</u>	<u>Occupation</u>	<u>Age</u>	<u>Cause of Death</u>
48.	6-19-79	Railroad Transportation	Brakeman	19	Fall
The employee died of multiple injuries when he fell from a railroad trestle 16 feet to the ground below.					
49.	6-19-79	State Government	Geriatric Worker	55	Heart Attack
The employee had been dancing a polka with an activities employee for the enjoyment of the residents in the lounge. She sat down to rest and suffered a heart attack.					
50.	6-25-79	Printing & Publishing	Press Worker	18	Crushed
Two employees were driving a flatbed truck with a 1,200 lb. roll of book paper on it when the roll of paper fell off the back of the truck. The employee stopped the truck and attempted to stop the roll of paper which was rolling down the street. He died of injuries suffered when the paper pinned him against a parked car.					
51.	6-26-79	Food & Kindred Products	Lard Drawer	49	Burns
The employee died of burns suffered when a section of the blow line below a rendering tank gave way spraying the employee with steam and hot grease. The accident occurred on 6-25-79 and the employee died on 6-26-79.					
52.	6-29-79	Local Government	Lineman	29	Electrocution
The employee was up on a utility pole working on a utility line when he came in contact with a 4.16 kilovolt transmission line.					
53.	6-29-79	Special Trade Contractor	Boilermaker	27	Crushed
The employee was helping other workers secure binder chains on a 10,800-lb. load of precast concrete forms. Six of the panels fell from a flatbed truck and crushed him.					
54.	7-09-79	Stone, Clay & Glass Prod.	Laborer	19	Explosion
The employee was welding in the plant when a spark from the welder ignited concrete sealer which was being sprayed on a freshly painted concrete floor. He and another employee were trying to put out the fire which had spread to a barrel of the sealer when the barrel exploded. Both employees were severely burned. The accident occurred on 5-29-79 and the employee died on 7-9-79.					

STATE OF IOWA
SUMMARY OF WORK RELATED DEATHS
1979 - Continued

<u>No.</u>	<u>Date</u>	<u>Industry</u>	<u>Occupation</u>	<u>Age</u>	<u>Cause of Death</u>
55.	7-11-79	General Building Contractor	Laborer	18	Electrocution
The employee was using an impact wrench to tighten bolts on a steel bin when he was electrocuted.					
56.	7-19-79	Electric, Gas & Sanitary Svcs.	Elect. Con. Lineman	56	Electrocution
The employee was standing on a stepladder tying back conductors to allow room for installing a new relay when he came in contact with a 440 volt bus bar.					
57.	8-10-79	Heavy Construction Contractor	Apprentice Carpenter	28	Fall
The employee was working on a bridge end when he fell down onto the bridge end slope area. He died of a fractured skull. The accident occurred on 8-8-79 and the employee died on 8-10-79.					
58.	8-15-79	Machinery Exc. Electrical	Plant Manager	45	Crushed
The employee was directing a crane which was moving a 5-ton sheet metal brake into the basement of the building. The brake tipped pinning the employee against the wall. The employee died of internal injuries.					
59.	8-20-79	Trucking & Warehousing	Truck Driver	34	Vehicle Accident
The employee was killed when his vehicle went into a ditch and overturned.					
60.	8-21-79	Auto Repair Svcs. & Garages	Truck Driver	56	Vehicle Accident
The employee was driving a truck which swerved into the median, struck a dirt bank and overturned.					
61.	8-23-79	Local Government	Asst. Head Custodian	56	Heart Attack
The employee was pushing a two wheel hand truck loaded with boxes of school books when he suffered a heart attack. The heart attack occurred on 8-20-79 and he died on 8-23-79.					
62.	8-24-79	Amusement & Recreation Svcs.	Rodeo Clown	21	Vehicle Accident
The employee was involved in a vehicle accident while driving a company truck.					

STATE OF IOWA
SUMMARY OF WORK RELATED DEATHS
1979 - Continued

<u>No.</u>	<u>Date</u>	<u>Industry</u>	<u>Occupation</u>	<u>Age</u>	<u>Cause of Death</u>
63.	8-28-79	Trucking & Warehousing	Truck Driver	48	Vehicle Accident
The employee's truck was struck by a tornado which threw it off the highway. The employee died of a crushed chest.					
64.	8-30-79	Printing & Publishing	Adver. Salesperson	57	Vehicle Accident
The employee was involved in a vehicle accident while on company business.					
65.	9-03-79	Special Trade Contractor	Painter	20	Electrocution
The employee was sandblasting the inside of a water tank while sitting in a chair on a boom. Apparently the boom came in contact with a 110 volt electric line and the employee was electrocuted.					
66.	9-05-79	General Building Contractor	Ironworker	24	Fall
The employee was signalling a crane operator when he fell from the third story to the basement of a building being constructed. He died of internal injuries.					
67.	9-05-79	Ag. Production - Crops	Farmhand	23	Caught In
The employee was working alone inside a corn bin when his clothing apparently became entangled in a sweep auger.					
68.	9-07-79	Trucking & Warehousing	Truck Driver	54	Vehicle Accident
The employee's truck struck another vehicle which had overturned in front of him. His truck caught fire and the employee died of burns.					
69.	9-10-79	Insurance Carriers	Building Engineer	28	Vehicle Accident
The employee was answering a call to return to the building when he was involved in a vehicle accident.					
70.	9-10-79	Local Government	Equip. Oper. II	61	Vehicle Accident
The employee jumped from his dump truck when the truck went over an embankment and was crushed when the truck rolled over him.					

STATE OF IOWA
SUMMARY OF WORK RELATED DEATHS
1979 - Continued

<u>No.</u>	<u>Date</u>	<u>Industry</u>	<u>Occupation</u>	<u>Age</u>	<u>Cause of Death</u>
71.	9-11-79	Wholesale Trade-Nondurables	Feed Salesman	41	Vehicle Accident
The employee died of a broken neck suffered in a vehicle accident.					
72.	9-12-79	Heavy Construction Contractor	Salesman	21	Vehicle Accident
The employee was killed when his car struck a truck broadside at an intersection.					
73.	9-13-79	Heavy Construction Contractor	Scraper Operator	47	Heart Attack
The employee was running a scraper when he suffered a heart attack.					
74.	9-19-79	Heavy Construction Contractor	Equipment Operator	21	Crushed
The employee was operating a bulldozer which went over the edge of a stockpile and fell 18 feet to the ground. The employee was crushed when the machine rolled over on him.					
75.	9-21-79	General Building Contractor	Truck Driver	27	Vehicle Accident
The employee died of head injuries suffered when his vehicle was involved in a collision with another vehicle.					
76.	9-25-79	Auto Dealers & Svc. Stations	NA	23	Struck By
The employee died of internal injuries after being struck in the abdomen by the rim of a farm tire. The tire had blown out while he was mounting it.					
77.	9-26-79	Social Services	Sheltered Wrkshp. Emp.	50	Strangulation
The employee was eating a roll between work assignments when the roll became lodged in her throat. First aid efforts failed to revive her.					
78.	9-26-79	Auto Dealers & Svc. Stations	NA	20	Burns
Three employees were scrubbing the floor with gasoline when the gasoline ignited. One employee died in the subsequent fire and the two others were severely burned.					

STATE OF IOWA
SUMMARY OF WORK RELATED DEATHS
1979 - Continued

<u>No.</u>	<u>Date</u>	<u>Industry</u>	<u>Occupation</u>	<u>Age</u>	<u>Cause of Death</u>
79.	9-30-79	Local Government	Policeman	33	Vehicle Accident
The employee's patrol car was struck head-on by an automobile that was drag racing.					
80.	10-02-79	Ag. Production - Crops	Farm Hand	60	Caught In
The employee was walking along a combine header when he slipped and fell into the machine's auger. He died of multiple injuries.					
81.	10-06-79	Stone, Clay & Glass Prod.	Laborer	28	Fall
The employee was in an endloader replacing a pin in a dust chamber room. The bucket moved due to a malfunction of the neutral switch and the employee fell 28 feet to the concrete floor. The accident occurred on 9-28-79 and the employee died of internal injuries on 10-6-79.					
82.	10-06-79	Primary Metal Industries	Maintenance Spvr.	59	Caught In
The employee was inside a sand muller replacing a plow blade when the operator turned the machine on. The safety switch failed to operate and the employee was caught by the big wheels that do the mixing. He died of crushing injuries.					
83.	10-07-79	Trucking & Warehousing	Truck Driver	48	Vehicle Accident
The employee's truck struck a parked car and caught fire. The employee died of burns.					
84.	10-09-79	Local Government	Maintenance Worker	62	Heart Attack
The employee suffered a heart attack while washing windows.					
85.	10-12-79	Heavy Construction Contractor	Teamster	47	Electrocution
The employee backed a truck into a power pole guide wire causing the top of the pole to snap off and fall into the street. The employee, knowing that the pole had been deactivated, went to move it out of the street. While moving the pole, the guide wire came in contact with an energized power line and the employee was electrocuted.					

STATE OF IOWA
SUMMARY OF WORK RELATED DEATHS
1979 - Continued

<u>No.</u>	<u>Date</u>	<u>Industry</u>	<u>Occupation</u>	<u>Age</u>	<u>Cause of Death</u>
86.	10-12-79	Heavy Construction Contractor	Crane Operator	25	Crushed
The employee was underneath a crane boom hammering out the pins in an effort to shorten the boom. When the pins came out, the boom fell on him and he died of crushing injuries.					
87.	10-12-79	Heavy Construction Contractor	Carpenter	60	Vehicle Accident
The employee was fatally injured in a vehicle accident.					
88.	10-22-79	Insurance Carriers	Unit Manager	41	Vehicle Accident
The employee's vehicle was struck head-on by a jeep which had crossed the center line.					
89.	10-22-79	Electric, Gas & Sanitary Svcs.	Combination Svcman.	54	Crushed
The employee had backed his truck down a slope into a field to repair a downed power line. After the repair was completed, the employee was unable to move his truck because of rain and snow conditions. A farmer brought his tractor to pull the truck. While the employee was hooking a chain to the truck, the tractor brakes failed and it rolled, pinning the employee between the truck and the tractor.					
90.	10-25-79	Heavy Construction Contractor	Piledriver Oper.	42	Drowning
The employee walked onto a sandbar in an attempt to get a paint can which had fallen into the river. The employee stepped into a deep hole and drowned. He was wearing a heavy safety belt and lanyard and considerable clothing when the accident occurred.					
91.	10-28-79	Wholesale Trade-Nondurables	Mill & Elev. Oper.	61	Heart Attack
The employee suffered a heart attack while attending a grain dryer.					
92.	10-29-79	Wholesale Trade-Durables	NA	19	Electrocution
The employee was taking a portable auger down from a bin roof when he came in contact with an electric line.					

STATE OF IOWA
SUMMARY OF WORK RELATED DEATHS
1979 - Continued

<u>No.</u>	<u>Date</u>	<u>Industry</u>	<u>Occupation</u>	<u>Age</u>	<u>Cause of Death</u>
93.	10-30-79	Ag. Production - Livestock	Farm Hand	23	Suffocation
94.	10-30-79	Ag. Production - Livestock	Farm Hand	18	Suffocation

Two employees fell into a corn silo and were asphyxiated by carbon dioxide gas produced by the fermenting corn. They had been attempting to retrieve part of the elevator which had fallen into the silo.

95.	11-01-79	Special Trade Contractor	Roofer	43	Fall
-----	----------	--------------------------	--------	----	------

The employee was holding a ladder out as another roofer was pulling hot roofing material up to him. The extension on the ladder came apart and fell, causing the victim to fall over the side of the roof.

96.	11-06-79	Rubber & Misc. Plastics Prod.	Janitor	42	Crushed
-----	----------	-------------------------------	---------	----	---------

The employee died of massive internal injuries when a 2000-lb. crate of crude rubber fell on him while he was removing waste material from a rail car.

97.	11-07-79	Stone, Clay & Glass Prod.	Repairman	26	Poisoning
-----	----------	---------------------------	-----------	----	-----------

The employee died of carbon monoxide poisoning produced by a faulty gas space heater.

98.	11-07-79	Wholesale Trade-Nondurables	Part-time Helper	65	Crushed
-----	----------	-----------------------------	------------------	----	---------

The employee was crushed between a wagon box and a loader while dumping corn from the wagon.

99.	11-08-79	Local Government	Dragline Operator	32	Gun Shot
-----	----------	------------------	-------------------	----	----------

The employee got off the dragline to shoot an animal with his rifle. He was crawling through a fence when the rifle discharged and the bullet struck him in the head.

100.	11-13-79	Local Government	Heavy Equip. Oper.	43	Electrocution
------	----------	------------------	--------------------	----	---------------

The employee was operating a dragline where a bridge was being repaired. The dragline came in contact with a high voltage electric line and the employee was electrocuted.

STATE OF IOWA
SUMMARY OF WORK RELATED DEATHS
1979 - Continued

<u>No.</u>	<u>Date</u>	<u>Industry</u>	<u>Occupation</u>	<u>Age</u>	<u>Cause of Death</u>
101.	11-13-79	Special Trade Contractor	Warehouseman	55	Heart Attack
The employee was carrying a box of material into a building when he suffered a heart attack.					
102.	11-20-79	Water Transportation	Boat Pilot	32	Drowning
The employee was getting ready to tie a rope on a barge when she slipped off the edge of the barge into the river and drowned. It was raining heavily at the time of the accident.					
103.	11-21-79	Nonmetallic Min. Exc. Fuel	Driller	20	Crushed
The employee was waiting for other workers to clear a mine at the end of the day. He died of multiple injuries when rocks fell from approximately 50 feet above.					
104.	11-21-79	Trucking & Warehousing	Truck Driver	47	Vehicle Accident
105.	11-21-79	Trucking & Warehousing	Truck Driver	28	Vehicle Accident
Both employees died of multiple injuries when their trucks collided.					
106.	11-23-79	Miscellaneous Retail	President	35	Vehicle Accident
The employee died of multiple injuries when the truck he was driving was hit by another vehicle which ran a stop sign.					
107.	11-29-79	Trucking & Warehousing	Truck Driver	51	Vehicle Accident
108.	11-29-79	Trucking & Warehousing	Truck Driver	25	Vehicle Accident
Both employees were killed when their trucks collided head-on.					
109.	12-09-79	Electric, Gas & Sanitary Svc.	Lineman	35	Electrocution
The employee was working on a pole restoring power by making up a 12.5 line jumper. He was electrocuted when he came in contact with an energized electric line.					

STATE OF IOWA
SUMMARY OF WORK RELATED DEATHS
1979 - Concluded

<u>No.</u>	<u>Date</u>	<u>Industry</u>	<u>Occupation</u>	<u>Age</u>	<u>Cause of Death</u>
110.	12-10-79	Stone, Clay & Glass Prod.	Truck Driver	58	Vehicle Accident

The brakes on the employee's truck failed as he tried to stop at an intersection causing the truck to overturn in a ditch. The employee died of head injuries when he was pinned in the cab.

111.	12-11-79	Railroad Transportation	Electrician	36	Fall
------	----------	-------------------------	-------------	----	------

The employee was standing on an aluminum ladder while working on a flashing light on the railroad tracks. A rope that had been used to extend the ladder had been left dangling. The rope was caught by a gust of wind and became entangled in the door mirror of a passing vehicle. The ladder and the employee were pulled 18 feet to the ground. The employee died 6 hours later of massive head injuries.

112.	12-13-79	Building Materials	Truck Driver	29	Vehicle Accident
------	----------	--------------------	--------------	----	------------------

The employee was fatally injured when his truck overturned on a county road.

113.	12-27-79	Local Government	Labor-Street Dept.	18	Crushed
------	----------	------------------	--------------------	----	---------

The employee was replacing the radiator hood on a tractor after a hydraulic hose had been repaired. The hydraulic bucket, which had been held up by a 2x4, fell and crushed him between the tractor and the bucket brace.

114.	12-27-79	Printing & Publishing	Asst. Circ. Mgr.	63	Vehicle Accident
------	----------	-----------------------	------------------	----	------------------

The employee was involved in a one-car accident while delivering paper bundles.



STATE OF IOWA
SUMMARY OF WORK RELATED DEATHS
1980

<u>No.</u>	<u>Date</u>	<u>Industry</u>	<u>Occupation</u>	<u>Age</u>	<u>Cause of Death</u>
1.	1-02-80	Food & Kindred Products	Truck Driver	60	Vehicle Accident
The employee was driving a semi-truck which collided with another semi-truck.					
2.	1-10-80	Special Trade Contractors	Laborer	21	Fall
The employee died when he fell 70 feet from the top of a cable television tower.					
3.	1-14-80	State Government	Conservation Aide	19	Struck By
The employee was attempting to dismantle a silo by breaking tiles with a sledge hammer. The silo collapsed. He was struck by debris causing fatal head injuries.					
4.	1-14-80	Membership Organizations	Pastor	73	Vehicle Accident
The employee was on his way to a meeting. He pulled onto the highway from a graveled road and collided with another vehicle.					
5.	1-16-80	Trucking & Warehousing	Truck Driver	41	Vehicle Accident
The employee was killed when his truck ran off the road.					
6.	1-17-80	General Bldg. Contractors	Carpenter	58	Fall
The employee slipped on icy ground and fell on 12-28-79. He suffered a broken blood vessel at the base of his neck. He died 1-17-80.					
7.	1-23-80	Agr. Production-Livestock	Foreman	33	Vehicle Accident
The employee was a passenger in a car traveling home from a business trip. The vehicle hit an icy spot on the road and struck a bridge. The employee died of massive injuries suffered in the accident.					
8.	1-25-80	Wholesale Trade-Nondurables	Truck Driver	20	Vehicle Accident
The employee was delivering seed. His truck left the road on the right shoulder. The truck hit the bank of a waterway in a ditch, flipped over, and caught fire.					

STATE OF IOWA
SUMMARY OF WORK RELATED DEATHS
1980 - Continued

<u>No.</u>	<u>Date</u>	<u>Industry</u>	<u>Occupation</u>	<u>Age</u>	<u>Cause of Death</u>
9.	1-27-80	Wholesale Trade-Nondurables	Laborer	24	Burns
The tractor being driven by the employee failed to make a turn and overturned into a ditch. The tractor burst into flames, trapping the employee inside.					
10.	1-28-80	Special Trade Contractors	Journeyman Plumber	27	Electrocution
The employee was cleaning a floor drain with an electric sink machine. He was electrocuted when he touched the on/off switch while kneeling in water.					
11.	2-1-80	Food & Kindred Products	Cattle Buyer	53	Vehicle Accident
The employee died of head injuries suffered in a two-car accident while he was traveling to buy cattle.					
12.	2-5-80	Wholesale Trade-Nondurables	Grain Dept. Head	23	Suffocation
The employee was in a bean bin unplugging a gravity spout. Apparently the flow of the beans, once the bin was unplugged, pulled him under and he suffocated.					
13.	2-6-80	Nonmetallic Minerals Ex. Fuels	Supervisor	64	Heart Attack
The employee suffered a heart attack while sitting at his desk, talking with a co-worker.					
14.	2-7-80	Agr. Production-Livestock	Cattle Feeder	22	Burns
The employee was helping clean a machine shop. There was an explosion and fire. The employee sustained 3 ^o burns over much of his body. Two other employees were hospitalized with severe burns.					
15.	2-14-80	Misc. Mfg. Industries	Coater/Treater Opr.	31	Crushed
The employee suffered massive crushing injuries when a 1,800 lb. roll of paper fell from an overhead carrier and landed on her.					
16.	2-16-80	Trucking & Warehousing	Truck Driver	31	Vehicle Accident
The employee suffered fatal injuries when his semi-truck was involved in a collision with another semi-truck.					

STATE OF IOWA
SUMMARY OF WORK RELATED DEATHS
1980 - Continued

<u>No.</u>	<u>Date</u>	<u>Industry</u>	<u>Occupation</u>	<u>Age</u>	<u>Cause of Death</u>
17.	2-27-80	Elec., Gas & Sanitary Svcs.	District Welder	58	Vehicle Accident
The employee was a passenger in a company vehicle. An oncoming car swerved into the company vehicle's lane. The company driver swerved to the left to avoid the oncoming car. The oncoming car then turned toward its correct lane and the two vehicles collided.					
18.	3-3-80	Transportation by Air	Pilot	29	Air Crash
19.	3-3-80	Health Services	Life Flight Nurse	25	Air Crash
20.	3-3-80	Health Services	Life Flight Nurse	24	Air Crash
The employees were killed when the rescue helicopter they were in crashed.					
21.	3-10-80	Trucking	Semi Loader	56	Vehicle Accident
The employee was killed in a vehicle accident while driving the company truck.					
22.	3-17-80	Wholesale Trade-Nondurables	Laborer	17	Suffocation
The employee entered a soybean bin to fix an auger. While attempting to fix the auger he was sucked into the beans and suffocated.					
23.	3-18-80	Special Trade Contractors	President/Owner	46	Fall
Victim died when he fell 465 feet from the top of a radio tower.					
24.	3-21-80	Trucking & Warehousing	Truck Driver	28	Vehicle Accident
While driving down the road the employee swerved his truck to the right of the road to avoid a pallet laying in the center of the road. The truck went onto the shoulder of the road and flipped over. The employee was crushed and burned.					
25.	3-24-80	Hotels & Other Lodgings	Bartender	23	Struck By
The employee went across the street to the assistant manager's house to pick up her paycheck while on break. A car struck her while she was returning to work. She was injured 3-21-80 and died 3-24-80.					

STATE OF IOWA
SUMMARY OF WORK RELATED DEATHS
1980 - Continued

<u>No.</u>	<u>Date</u>	<u>Industry</u>	<u>Occupation</u>	<u>Age</u>	<u>Cause of Death</u>
26.	3-26-80	Special Trade Contractors	Laborer	20	Fall
The employee was killed when he fell off a bridge he was helping dismantle.					
27.	3-26-80	Wholesale Trade-Durables	Warehouse Worker	24	Crushed
The employee was working on bundling pipe with chains. A band broke causing the pipe to fall on him.					
28.	3-26-80	Gen. Bldg. Contractors	Mechanic	NA	Vehicle Accident
The employee was driving a mobile piece of equipment on the highway. An oncoming vehicle hauling coal went out of control and struck the mobile unit.					
29.	3-26-80	Gen. Merchandise Stores	Beauty Operator	34	Leukemia
The employee died of leukemia. It is claimed the disease developed as a result of exposure to chemicals used in the beauty parlor.					
30.	3-28-80	Misc. Retail	Yard Man	45	Crushed
The employee was removing parts from a wrecked pickup truck. The truck slipped off its support and fell on him crushing his chest.					
31.	4-7-80	Wholesale Trade-Nondurables	Salesman	45	Vehicle Accident
The employee lost control of his pickup in loose gravel. The vehicle went into a ditch and rolled twice, throwing the employee out the window and into a field.					
32.	4-8-80	State Government	Regional Consultant	52	Vehicle Accident
The employee was traveling to a school on an assigned visit when he pulled out in front of another vehicle and his car was struck broadside.					
33.	4-9-80	Local Government	Police	25	Gun Shot
The employee was assisting in a drug raid. He was shot at point blank range with a .410 shotgun after making an undercover drug buy.					

STATE OF IOWA
SUMMARY OF WORK RELATED DEATHS
1980 - Continued

<u>No.</u>	<u>Date</u>	<u>Industry</u>	<u>Occupation</u>	<u>Age</u>	<u>Cause of Death</u>
34.	4-10-80	Insurance Carriers	NA	51	Vehicle Accident
The employee was involved in a head-on collision with another auto while on insurance business.					
35.	4-23-80	Lumber & Wood Products	Sawmill Operator	65	Crushed
The employee was crushed when a tree limb fell on him as he was sawing down a tree.					
36.	4-24-80	Special Trade Contractors	Pipefitter Foreman	59	Fall
The employee was in a wire mesh basket that broke loose from an aerial lift. He fell 35-40 feet to the ground where he suffered fatal head injuries.					
37.	4-25-80	Trucking & Warehousing	Truck Driver	33	Heart Attack
The employee suffered a heart attack while sleeping in his truck.					
38.	5-1-80	Special Trade Contractors	Helper	19	Electrocution
The employee was installing cable television lines across an open field when a cable became entangled in a tree. He was electrocuted when he attempted to free the line and it struck an electric line.					
39.	6-10-80	Railroad Transportation	Switch Foreman	24	Crushed
The employee was crushed between the knuckle couplers on two freight cars.					
40.	6-11-80	Printing & Publishing	Newspaper Carrier	15	Struck By
The employee was crossing the highway to get papers for delivery. He was struck by a truck as he ran across the road.					
41.	6-13-80	Wholesale Trade-Durables	Truck Driver	38	Caught In
The employee was injured on 4-6-79 while he was repairing a truck and he became caught in the power-take-off unit of the truck. He died as a result of those injuries on 6-13-80.					

STATE OF IOWA
SUMMARY OF WORK RELATED DEATHS
1980 - Continued

<u>No.</u>	<u>Date</u>	<u>Industry</u>	<u>Occupation</u>	<u>Age</u>	<u>Cause of Death</u>
42.	6-17-80	Heavy Const. Contractors	Heavy Equip. Opr.	60	Crushed
The employee was operating a road grader. The blade on the grader struck a rut and the machine tipped over on its side. The employee was thrown from the open cab and the machine landed on him.					
43.	6-23-80	Local Government	Conservation Aide	50	Heart Attack
The employee suffered a heart attack while clearing timber.					
44.	6-24-80	Special Trade Contractors	Painter	24	Electrocution
The employee was wiping dew off metal tanks. He touched an electric line and was electrocuted.					
45.	6-25-80	Stone, Clay & Glass Prod.	Truck Driver	42	Vehicle Accident
The employee was driving a ready-mix truck which went into a ditch and rolled over. He died of massive chest injuries.					
46.	7-7-80	Food & Kindred Products	Plant Superintendent	41	Crushed
The soybean meal in the upper part of a silo stuck together trapping a large pocket of air below as beans were being taken out of the bottom of the bin. The meal broke loose and the trapped air caused the silo to collapse. The employee was buried by the collapsing structure and the soybeans.					
47.	7-10-80	Wholesale Trade-Nondurables	Detasseler	51	Heart Attack
The employee suffered a heart attack while detasseling.					
48.	7-11-80	Eating & Drinking Places	Cook	53	Heart Attack
The employee suffered a heart attack while doing kitchen preparation work on 7-10-80. The employee died on 7-11-80.					
49.	7-15-80	Agr. Production-Crops	Farm Hand	74	Suffocation
The employee was helping unload soybeans when he fell into the bin. He sank down into the beans and was suffocated.					

STATE OF IOWA
SUMMARY OF WORK RELATED DEATHS
1980 - Continued

<u>No.</u>	<u>Date</u>	<u>Industry</u>	<u>Occupation</u>	<u>Age</u>	<u>Cause of Death</u>
50.	7-15-80	Local Government	Laborer	56	Crushed
The employee was placing water pipes in a ditch. The walls of the ditch caved in and buried the employee up to his neck. He died of multiple chest injuries.					
51.	7-22-80	Insurance Carriers	Field Representative	53	Heart Attack
The employee suffered a heart attack while at work.					
52.	7-27-80	Misc. Mfg. Industries	Owner	62	Air Crash
The employee's plane crashed while he was performing stunt aerobatics.					
53.	7-29-80	Gen. Bldg. Contractors	Carpenter	61	Fall
The employee was installing tongue and groove decking on a roof. He fell forward from a kneeling position. He grabbed a beam in the process but lost his grip. He fell 18 feet to concrete below.					
54.	7-30-80	Trucking & Warehousing	Truck Driver	24	Fall
The employee suffered head injuries when he fell off a trailer wheel loading a truck on 2-12-79. He died as result of those injuries on 7-30-80.					
55.	8-4-80	Trucking & Warehousing	Truck Driver	23	Vehicle Accident
The employee was killed when his truck collided with another vehicle.					
56.	8-12-80	Agr. Production-Crops	Laborer	17	Crushed
The employee was driving a tractor, lost control causing the tractor to tip-over into a ditch. The employee died as a result of injuries sustained from the tractor falling on him.					
57.	8-20-80	Health Services	Nurses Aid	54	Stroke
The employee suffered a fatal stroke while at work.					

STATE OF IOWA
SUMMARY OF WORK RELATED DEATHS
1980 - Continued

No.	Date	Industry	Occupation	Age	Cause of Death
58.	8-25-80	Gen. Bldg. Contractors	Carpenter	59	Struck By
The employee was working on the ground underneath a scaffold. A piece of angle iron fell from 50 feet above and struck him on the head.					
59.	8-25-80	Gen. Bldg. Contractors	Carpenter	50	Electrocution
The employee was using an electric circular saw when he was electrocuted.					
60.	8-27-80	Chemicals & Allied Products	Utility Worker	28	Crushed
The employee was operating a small loader. He apparently dropped his hard hat. He raised the loaded bucket and reached through to pick up the hat. He bumped the switch and the bucket came down, crushing him between the bucket and the loader frame.					
61.	9-2-80	Agr. Production-Crops	Farm Hand	36	Drowning
The employee drowned while attempting to attach a tow line to a dead steer in a farm pond.					
62.	9-12-80	Wholesale Trade-Nondurables	Route Salesman	29	Vehicle Accident
63.	9-12-80	Trucking & Warehousing	Truck Driver	40	Vehicle Accident
Both employees were killed when their vehicles were involved in a head-on collision.					
64.	9-12-80	Agr. Production-Crops	Farm Hand	51	Crushed
The employee was driving a tractor to a field. He was found in a ditch, crushed under the tractor.					
65.	9-13-80	Heavy Const. Contractors	Laborer	19	Crushed
66.	9-13-80	Heavy Const. Contractors	Laborer	18	Crushed
The employees were crushed when the walls of a trench they were working in collapsed and they were buried.					

STATE OF IOWA
SUMMARY OF WORK RELATED DEATHS
1980 - Continued

<u>No.</u>	<u>Date</u>	<u>Industry</u>	<u>Occupation</u>	<u>Age</u>	<u>Cause of Death</u>
67.	9-18-80	Special Trade Contractors	President/Owner	36	Explosion
The employee was inside a large tank applying a lining when an explosion occurred inside the tank. He was thrown from the tank in flames. He suffered burns on 90% of his body. The accident occurred on 8-19-80. He died on 9-18-80 as a result of his injuries.					
68.	9-30-80	Agricultural Services	Farm Laborer	20	Crushed
The employee was killed when he was pinned between a truck box and hoist.					
69.	10-3-80	Agr. Production-Crops	Cowgirl	23	Fall
The employee suffered head injuries when she was thrown off a horse on 9-29-80.					
70.	10-6-80	Agr. Production-Crops	Apple Picker	64	Fall
The employee was killed when he fell from a ladder while picking apples.					
71.	10-7-80	Special Trade Contractors	Owner-Manager	40	Gun Shot
The employee was shot and killed while he was looking for another employee.					
72.	10-7-80	Printing & Publishing	General Manager	37	Vehicle Accident
The employee was fatally injured in a vehicle accident.					
73.	10-12-80	Hotels & Other Lodgings	Maid	58	Strangulation
The employee was cleaning a room when she suddenly fell to the floor and died. An autopsy indicated that choking on a piece of hard candy was the cause of death.					
74.	10-16-80	Transportation by Air	Pilot	27	Air Crash
The employee died when the plane he was piloting crashed.					

STATE OF IOWA
SUMMARY OF WORK RELATED DEATHS
1980 - Continued

<u>No.</u>	<u>Date</u>	<u>Industry</u>	<u>Occupation</u>	<u>Age</u>	<u>Cause of Death</u>
75.	10-18-80	Paper & Allied Products	Millworker	27	Crushed
The employee was helping rewind a roll of paper on a paper machine. The machine was shutdown to splice in a new roll of paper. Somehow the roll (2000 lbs.) dislodged and fell, pinning the employee against a table.					
76.	10-27-80	Textile Mill Products	Blender	62	Heart Attack
The employee suffered a heart attack while pushing wool into a bin.					
77.	11-3-80	Wholesale Trade-Nondurables	Truck Driver	40	Vehicle Accident
The employee was killed when the truck he was driving went off the roadway and crashed.					
78.	11-12-80	Special Trade Contractors	Laborer	25	Crushed
79.	11-12-80	Special Trade Contractors	Laborer	59	Crushed
80.	11-12-80	Special Trade Contractors	Laborer	24	Crushed
The employees were killed when a wall of the building they were helping to demolish collapsed on them.					
81.	11-17-80	Special Trade Contractors	Plumber	20	Drowning
The employee was installing a sewer line in a ten foot deep ditch. A backhoe broke a water main which flooded the ditch and caused the ditch walls to cave in, burying and drowning the employee.					
82.	11-24-80	Food & Kindred Products	Laborer	NA	Heart Attack
The employee suffered a heart attack while working.					
83.	11-25-80	Wholesale Trade-Durables	Serviceman	53	Vehicle Accident
The employee was driving the company service truck, which became involved in an accident. He was thrown from the truck and into the path of another vehicle, which ran over him.					
84.	12-1-80	Nonmetallic Minerals, Ex. Fuels	Truck Driver	25	Crushed
The employee was driving a machine loader which overturned, pinning him underneath it.					

STATE OF IOWA
SUMMARY OF WORK RELATED DEATHS
1980 - Continued

<u>No.</u>	<u>Date</u>	<u>Industry</u>	<u>Occupation</u>	<u>Age</u>	<u>Cause of Death</u>
85.	12-1-80	Auto Rpr. Svcs. & Grgs.	Truck Driver	45	Vehicle Accident
The employee was killed when the truck he was driving left the roadway, jackknifed and rolled over.					
86.	12-7-80	Local Government	Maintenance	42	Fall
The employee fell from a 10 foot aluminum ladder which was on a scaffolding 63 inches above the floor. The accident occurred on 12-4-80. The employee died of head injuries suffered from the fall on 12-7-80.					
87.	12-15-80	Trucking & Warehousing	Garbage Pickup	18	Crushed
The employee was fatally injured when a garbage truck backed over him.					
88.	12-16-80	State Government	Dist. Const. Tech.	60	Vehicle Accident
The employee was killed when an oncoming vehicle crossed the center line and hit the pickup that he was driving head-on.					
89.	12-16-80	Business Services	Delivery	44	Vehicle Accident
The employee died when the truck that he was driving became involved in an accident with an automobile.					
90.	12-24-80	Food & Kindred Products	Field Service Man	36	Vehicle Accident
The employee was killed when the pickup that he was driving crossed the center line on the roadway and struck a semi head-on.					
91.	12-28-80	Railroad Transportation	NA	32	Struck By
The employee was killed when he was struck by a train.					
92.	12-29-80	Stone, Clay & Glass Prod.	Truck Driver	44	Vehicle Accident
The employee was killed when the gravel truck that he was driving struck the side of a freight train.					



STATE LIBRARY OF IOWA



3 1723 02056 1171