

HD
4826
.I8
B54
1974/76

**IOWA BUREAU OF LABOR
BIENNIAL REPORT
1975-1976**



Iowa
a place to grow

~~Iowa~~
~~331~~
~~Lo?~~

IOWA BUREAU OF LABOR

BIENNIAL REPORT
1975 - 1976



Iowa
a place to grow

Robert D. Ray, Governor

Allen J. Meier, Labor Commissioner

Compiled by the

Research and Statistics Division
John G. Patramanis, Director
East 7th and Court Avenue
Des Moines, Iowa 50319
(515) 281-3606

November 1977

STATE LIBRARY COMMISSION OF IOWA

Historical Building

DES MOINES, IOWA 50319

TABLE OF CONTENTS

	PAGE
Introduction.....	v
Section I. Work Injuries and Illnesses.....	1
Reporting Requirements.....	3
Summary.....	4
Table 1: Number of Reported Disabling Injuries by Industry Division and Nature of Injury.....	6
Table 2: Number of Reported Disabling Injuries by Industry Division and Part of Body Affected.....	7
Table 3: Number of Reported Disabling Injuries by Industry Division and Source of Injury.....	8
Table 4: Number of Reported Disabling Injuries by Industry Division and Type of Accident.....	9
Table 5: Number of Reported Disabling Injuries by Industry Division and Time of Day.....	10
Table 6: Number of Reported Disabling Injuries by Industry Division and Month.....	11
Table 7: Number of Reported Disabling Injuries by Industry Division, Age and Sex.....	12
Table 8: Number of Reported Disabling Injuries by Industry Division, Severity and Sex.....	13
Table 9: Distribution of Reported Disabling Injuries All Industries - By Nature of Injury.....	14
Table 10: Distribution of Reported Disabling Injuries All Industries - By Part of Body Affected.....	14
Table 11: Distribution of Reported Disabling Injuries All Industries - By Source of Injury.....	15
Table 12: Distribution of Reported Disabling Injuries All Industries - By Type of Accident.....	15
Table 13: Distribution of Reported Disabling Injuries and Employment - By Industry Division.....	16
Table 14: Number of Reported Disabling Injuries By County...	17
Technical Notes.....	18
Section II. Work Related Deaths.....	21
Summary.....	23
Table 1: Reported Work Related Deaths by Industry Division.	25
Table 2: Reported Work Related Deaths by Cause.....	25
Table 3: Distribution of Reported Work Related Deaths and Employment - By Industry Division.....	26
Table 4: Industry Ranking Based on Reported Work Related Deaths - 1975.....	27
Table 5: Industry Ranking Based on Reported Work Related Deaths - 1976.....	28
Summary of Work Related Deaths - 1975.....	29
Summary of Work Related Deaths - 1976.....	43

Table of Contents - Continued

	PAGE
Section III. Occupational Safety and Health.....	57
Table 1: Occupational Safety and Health Administration State Performance - Fiscal Year 1976.....	59
Table 2: Occupational Safety and Health Administration State Performance - Fiscal Year 1977.....	60
Table 3: Number of Appeals and Appeal Rate under the Iowa Occupational Safety and Health Act 1975-1976.....	61
Table 4: Activities Conducted by the Safety Education/ Consultation Division Calendar Years 1975-1976....	62
Section IV. Wage Payment and Workplace Standards.....	63
Table 1: Wage Collection Cases Initiated on Behalf of Clients Fiscal Year 1976.....	65
Table 2: Number of Certificates of Age, Work Permits, and Street Trades Permits By Month 1975.....	67
Table 3: Number of Certificates of Age, Work Permits, and Street Trades Permits By Month 1976.....	68
Table 4: Report of Licenses Issued and Fees Collected Private Employment Agencies Fiscal Year 1975-1976.....	69
Section V. Public Protection.....	71
Table 1: Report of Boiler Inspections and Fees Collected State and Insured Boilers Fiscal Years 1975-1976..	73
Table 2: Report of Amusement Park/Ride Permits Issued, Inspections and Fees Collected Calendar Years 1975-1976.....	74
Table 3: Report of Invoices Issued, Elevator Fees Charged, and Number of Certificates Issued Calendar Year 1976.....	75
Appendixes.....	77
Appendix I. Organization of the Iowa Bureau of Labor.....	79
Appendix II. Materials Available from the Research and Statistics Division of the Iowa Bureau of Labor.	80
Appendix III. Instructional Module Packages Available from the Safety Education/Consultation Division of the Iowa Bureau of Labor.....	81

INTRODUCTION

The Bureau of Labor's Biennial Report for 1975 and 1976 contains statistical summaries of its varied activities and services to the workers and employers of the State of Iowa. The following is a brief summary of the laws and programs administered by the Bureau of Labor. In addition to the specific activities outlined below, the Bureau of Labor offers educational programs in the area of occupational safety and health to both employers and employees. Also, the Bureau of Labor serves as an information or referral service to workers and employers for questions pertaining to conditions of employment or for problems arising out of and in the course of one's employment.

Occupational Safety and Health

The purpose of the Iowa Occupational Safety and Health Act is to assure every working man and woman in this state safe and healthful working conditions and to preserve human resources. The Act authorizes the Labor Commissioner to set safety and health standards, provides for research in the safety and health areas, and sets up an inspection and enforcement program. The coverage of this Act extends to all employers in the state with one or more employees. Excluded are mining operations and Federal government installations. Safety and health coverage provided by the Bureau of Labor affects a total of 1,034,800 workers.

Wage Payment Collection

The purpose of the Iowa Wage Payment Collection Law is to insure that an employer pays all wages due its employees, less any lawful deductions, on regular paydays which are at consistent intervals from each other and which are designated in advance by the employer. It is the duty of the Labor Commissioner to administer and enforce the provisions of the Law, to investigate charges, and if necessary commence a civil action to recover any unpaid wages due the employee.

Child Labor

The Iowa Child Labor Law prescribes hours and conditions of work that are permissible for the employment of youth. Although persons over 16 years of age may be employed legally in most occupations, the Law sets an 18-year minimum for employment in certain particularly hazardous jobs in order to protect young workers from industrial injury. Under the Iowa Child Labor Law, employers are required to obtain work permits or certificates of age before they employ minors of certain ages. These permits show that the minor has met the minimum age and other requirements of the State law. It is the duty of the Labor Commissioner to enforce the provisions of the Law.

Boiler Inspection

It is the duty of the State Boiler Inspector to inspect or cause to be inspected at least once every twelve months steam and hot water boilers used for heating and other such equipment covered by the Iowa Boiler Inspection Law in order to determine whether such equipment is in safe and satisfactory condition and properly constructed and maintained for the purpose for which the same is used.

Elevator Inspection

The purpose of the State Elevator Code is to provide for the public safety and to protect the public welfare of persons using any elevator, dumbwaiter, escalator, moving walk, or manlift subject to the Code. It is the function of the Bureau of Labor to adopt rules governing maintenance, construction, alteration, and installation of facilities, and the inspection and testing of new and existing installations.

Inspection of Amusement Parks/Rides

The purpose of the Iowa Amusement Ride Safety Inspection Law is to minimize in so far as possible injury or death that may result from the operation of amusement devices or carnivals. It is the function of the Bureau of Labor to determine if an amusement ride, amusement device, concession booth, or any related electrical equipment is in compliance with safety rules and will provide protection to the public using such ride, device, booth or related electrical equipment.

License for Employment Agencies

Employment agencies are required to obtain licenses from the Employment Agency License Commission before they conduct their business and to file a schedule of fees charged. The Labor Commissioner is a member of the Commission; it is his duty to administer the law relating to employment agencies and to investigate complaints under it. Fees chargeable by employment agencies may not exceed 25 percent of the first month's pay for employment paying less than \$250 per month and no charge of furnishing or procurement of employment shall exceed 8 percent of the annual gross earnings. However, if fees are charged solely to the employer there is no restriction on the amount that can be charged.

On-Site Consultation

The Iowa Bureau of Labor offers a free on-site safety and health consultation service to employers who request it. In providing this service, highest priority is given to smaller businesses and to workplaces where a high degree of hazard is known to exist. The consultation is used to inform the employer of conditions and practices in his establishment which may not be in compliance with the law, standards or rules and regulations. It is a means of explaining job safety and health regulations and informing

On-Site Consultation, continued

the employer how to comply with them. The on-site consultation activities are an integral part of the Bureau of Labor's occupational safety and health program.

Inspection of Temporary Labor Camps

The Iowa Bureau of Labor inspects temporary labor camps to insure that they are environmentally safe and that the site, shelter, water supply, toilet facilities, sewage disposal facilities, laundry, handwashing and bathing facilities, and lighting are adequate. Such temporary labor camps are occupied by migrant workers. The inspections are performed as a part of the Bureau of Labor's occupational safety and health program.

Railway Employees Sanitation and Shelter

The Iowa Railway Employees Sanitation and Shelter Act requires that railway companies within the State provide adequate sanitation and shelter for all railway employees. The Iowa Bureau of Labor has adopted regulations and conducts inspections to insure that the water supply, toilets, eating places and sleeping accommodations of railway workers are safe and meet required specifications.

A major part of the Biennial Report is also devoted to statistical information collected by the Bureau of Labor pertaining to occupational injuries and illnesses and work related deaths. Such information, particularly that about the event or exposure which produced the injury or illness, creates an awareness by workers and employers of the seriousness and the nature of unsafe and unhealthful working conditions and aids in accident and illness prevention efforts.

If you have any questions relating to the activities or services of the Iowa Bureau of Labor, please contact our office.



SECTION I

WORK INJURIES AND ILLNESSES

1000000

1000000

REPORTING REQUIREMENTS

Regulations issued under the Iowa Occupational Safety and Health Act require employers to report to the Iowa Bureau of Labor all occupational injuries or occupational illnesses that result in two or more lost workdays. State of Iowa Form No. L-1/WC-1 is to be used, and is to be filed with the Bureau of Labor as early as practicable but no later than six working days after receiving information that an occupational injury or illness will result in two or more lost workdays. Copies of the Supplementary Record of Occupational Injuries and Illnesses are acceptable reports.

In determining the number of lost workdays, the day of injury is not included. The number of days includes all days (consecutive or not) on which, because of the injury or illness:

- 1) the employee would have worked, but could not, or
- 2) the employee was assigned to a temporary job, or
- 3) the employee worked at a permanent job less than full time, or
- 4) the employee worked at a permanently assigned job but could not perform all duties normally assigned to it.

In addition, employers must report to the Iowa Commissioner of Labor within 48 hours each accident or health hazard that results in one or more fatalities or hospitalization of five or more employees.

The following data relating to work injuries and illnesses and work related deaths is compiled from reports submitted by employers to the Bureau of Labor for calendar years 1975 and 1976.

SUMMARY

During the 1975-1976 biennium, 32,511 disabling work injuries and illnesses were reported to the Iowa Bureau of Labor. Of these, 15,807 were reported in 1975 and 16,704 in 1976. Disabling work injuries or illnesses are those that involve two or more lost workdays beyond the day of injury. Also included are work-related fatalities.

The most common nature of injury sustained in 1975 and 1976 was sprains or strains. This category accounted for about 38 percent of the total reported disabling injuries during the biennium. Contusions, crushing, or bruises were the next most common injuries, accounting for 15.9 percent of the total. This was closely followed by cuts, lacerations, or punctures with 15.6 percent of the injuries reported during the period. Fractures were sustained in 11 percent of all reported cases. These four types of injuries have remained the most prevalent sustained by workers over the past 10-year period.

The part of a person's body most frequently afflicted with injuries was the trunk; 36 percent of the cases reported involved the abdomen, back, chest, hips or shoulders. Nearly 24 percent of the injuries sustained, when distributed by the part of the body affected, were to the back. This is a direct result of the large number of strains suffered by workers. The upper extremities, particularly the fingers, were the next most commonly affected body parts. Disabling injuries to the lower extremities were reported in 22 percent of the cases during the biennium.

Metal items were the most common source of the reported injuries. These accounted for just over 17 percent of the injuries for the two year period. Working surfaces, those surfaces in use as support for people, were the source of over 12 percent of the injuries reported. A significant number of the reported injuries were inflicted by boxes, barrels and other containers (9.1 percent); unpowered hand tools (7.0 percent); vehicles (7.0 percent); and machines (6.9 percent).

Overexertion was the most frequent type of accident reported. This relates directly to the high number of sprains or strains suffered, especially to the back. The next most common type of work accident was caused by being struck by an object. Falls, either from an elevation or on the same level, accounted for about 16 percent of the injuries in 1975 and 1976.

The time of day when the most reported occupational injuries and illnesses occurred was between 10 a.m. and 11 a.m., just over 9 percent of all reported cases were sustained during this hour. The next most dangerous times of the day, based on frequency of injuries sustained, were from 2 p.m. to 3 p.m., 9 a.m. to 10 a.m. and 11 a.m. to 12 noon. The same hours also were recorded during the previous biennium as having the most injuries.

During the 1975-1976 biennium, the average number of occupational injuries and illnesses reported to the Bureau of Labor per month was 1,355. During both years of the biennium, 82 percent of the occupational injuries and illnesses reported involved male employees. Cases involving women workers numbered 5,796 as compared with 26,715 involving men. The age group sustaining the greatest number of reported work injuries and illnesses for both men and women was that ranging from 20 to 29. This age group included over 37 percent of all injuries and illnesses involving male employees and 28 percent involving female workers.

By far the greatest number of disabling work injuries and illnesses reported during the biennium occurred in the manufacturing industries. Manufacturing workers suffered 17,423 of the reported cases, 53.6 percent of the total. However, manufacturing workers represented just under one-fourth of the total employment in the state. The construction industries, representing 4.5 percent of the employment, had 3,008 reported occupational injuries and illnesses, or 9.3 percent of the total.

The majority of the disabling occupational injuries and illnesses reported to the Bureau of Labor, over 98 percent, were of a temporary nature. Less than one percent of the reported cases resulted in the death of the employee. (The section on work-related deaths provides a more detailed analysis of the fatalities sustained in Iowa during the 1975-1976 biennium.) Also, 483 injuries, 1.5 percent of the total, resulted in permanent partial disability to the worker. A permanent partial disability is one which results in the loss, or complete loss of use, of any member or part of a member of the body, or in permanent impairment of function of the body or any of its parts.

NOTE: Whenever used in titles, the term "injury" includes occupational illnesses.

Table 1
STATE OF IOWA
NUMBER OF REPORTED DISABLING INJURIES
BY INDUSTRY DIVISION AND NATURE OF INJURY
1975 - 1976

1975

Industry Division	Amputations	Burns- Heat or Chemical	Contagious or In- fectious Disease	Contusion, Crush- ing or Bruise	Cut, Laceration or Puncture	Dermatitis	Dislocation	Electric Shock, Electrocution	Fracture	Hernia	Inflammation or Irritation	Scratches or Abrasions	Sprains or Strains	Other	Total
Agric., Forestry & Fisheries....	16	8	0	55	66	2	18	0	107	9	2	5	111	38	437
Mining.....	1	0	0	10	3	0	4	0	10	1	0	2	5	4	40
Contract Construction.....	15	50	3	126	161	5	38	4	237	26	4	43	372	64	1,148
Manufacturing.....	175	290	52	1,512	1,523	120	109	6	802	146	181	235	3,144	211	8,506
Transportation & Pub. Utilities.	4	32	1	129	69	5	34	3	132	15	7	22	317	56	826
Wholesale & Retail Trade.....	33	105	1	262	333	9	72	6	236	61	16	67	621	92	1,914
Finance, Ins. & Real Estate.....	1	1	0	9	7	0	1	0	12	0	2	1	26	5	65
Services.....	9	37	11	127	100	14	27	0	97	23	5	21	404	39	914
Government.....	11	69	12	363	193	23	66	5	212	14	13	26	864	86	1,957
TOTAL.....	265	592	80	2,593	2,455	178	369	24	1,845	295	230	422	5,864	595	15,807

1976

Agric., Forestry & Fishing.....	17	9	2	63	72	6	19	0	70	10	1	12	109	35	425
Mining.....	0	5	0	7	3	0	0	0	7	2	0	2	12	5	43
Construction.....	21	76	0	269	231	13	61	2	275	32	8	83	665	124	1,860
Manufacturing.....	150	307	36	1,439	1,643	107	114	4	749	166	189	273	3,413	327	8,917
Transportation & Pub. Utilities.	8	29	1	153	88	7	25	2	108	21	4	23	475	52	996
Wholesale Trade.....	19	36	1	166	137	10	40	3	155	37	6	37	371	54	1,072
Retail Trade.....	15	81	1	145	253	3	44	0	124	25	8	34	394	70	1,197
Finance, Ins. & Real Estate.....	1	5	2	8	8	1	2	1	16	1	0	2	25	7	78
Services.....	12	72	13	290	170	20	45	1	213	24	19	29	878	120	1,906
Public Administration.....	2	3	0	38	23	3	6	0	29	1	0	2	71	32	210
TOTAL.....	244	623	56	2,578	2,628	170	356	13	1,746	319	235	497	6,413	826	16,704

Table 2
STATE OF IOWA
NUMBER OF REPORTED DISABLING INJURIES
BY INDUSTRY DIVISION AND PART OF BODY AFFECTED
1975 - 1976

1975																
Industry Division	Head	(Eyes)	Neck	Upper extremities	(Arms)	(Fingers)	Trunk	(Back)	Lower extremities	(Legs)	(Feet)	Multiple parts	Body system	Body parts NEC	Unclassified	Total
Agric., Forestry & Fisheries...	27	13	4	102	25	41	115	64	140	76	26	25	22	0	2	437
Mining.....	3	1	0	5	1	3	15	7	14	7	3	1	2	0	0	40
Contract Construction.....	106	48	14	256	54	114	407	257	280	113	71	61	21	1	2	1,148
Manufacturing.....	430	229	98	3,097	580	1,593	2,914	1,894	1,669	648	488	159	131	0	8	8,506
Transportation & Pub. Utilities	52	27	13	147	44	53	326	205	205	78	50	62	19	0	2	826
Wholesale & Retail Trade.....	140	65	17	547	97	261	649	403	441	215	83	93	25	0	2	1,914
Finance, Ins. & Real Estate....	6	0	0	10	4	3	20	9	23	8	3	6	0	0	0	65
Services.....	57	22	14	216	46	95	381	267	189	89	33	40	16	0	1	914
Government.....	113	33	34	369	100	153	756	500	527	248	97	110	41	1	6	1,957
TOTAL.....	934	438	194	4,749	951	2,316	5,583	3,606	3,488	1,482	854	557	277	2	23	15,807

1976																
Agric., Forestry & Fishing.....	28	13	4	108	18	43	136	64	114	57	24	23	11	0	1	425
Mining.....	5	2	0	6	3	1	14	6	12	4	0	4	2	0	0	43
Construction.....	153	90	33	401	82	162	645	410	503	219	105	87	32	0	6	1,860
Manufacturing.....	438	249	98	3,192	563	1,637	3,166	2,130	1,737	659	471	147	131	0	8	8,917
Transportation & Pub. Utilities	69	30	27	158	50	64	430	300	247	106	53	49	14	0	2	996
Wholesale Trade.....	71	30	14	256	63	114	390	242	279	114	73	38	20	0	4	1,072
Retail Trade.....	93	39	13	360	52	179	408	285	263	119	56	42	15	0	3	1,197
Finance, Ins. & Real Estate....	10	5	4	10	5	2	23	14	22	9	5	8	1	0	0	78
Services.....	119	33	23	393	94	155	817	577	438	208	89	61	47	0	8	1,906
Public Administration.....	19	4	3	31	7	11	74	46	52	26	8	19	12	0	0	210
TOTAL.....	1,005	495	219	4,915	937	2,368	6,103	4,074	3,667	1,521	884	478	285	0	32	16,704

Table 3
STATE OF IOWA
NUMBER OF REPORTED DISABLING INJURIES
BY INDUSTRY DIVISION AND SOURCE OF INJURY
1975 - 1976

1975															
Industry Division	Bodily Motion	Boxes, Barrels & Other Containers	Chemicals	Hand Tools - Not Powered	Hand Tools - Powered	Hoisting Apparatus	Ladders	Machines	Metal Items	Particles (Unidentified)	Vehicles	Wood Items	Working Surfaces	Other	Total
Agric., Forestry & Fisheries...	11	10	10	25	9	3	19	67	26	1	43	9	42	162	437
Mining.....	0	1	1	1	1	0	1	3	4	1	5	1	3	18	40
Contract Construction.....	43	41	24	62	36	23	59	74	174	19	83	67	174	269	1,148
Manufacturing.....	316	862	152	769	138	128	97	717	1,971	69	448	128	714	1,997	8,506
Transportation & Pub. Utilities	50	64	17	37	14	17	16	15	72	13	161	37	121	192	826
Wholesale & Retail Trade.....	74	247	23	113	24	20	56	159	177	18	199	66	241	497	1,914
Finance, Ins. & Real Estate....	1	3	0	2	2	0	5	3	3	0	13	0	16	17	65
Services.....	46	72	19	25	11	7	16	44	41	3	34	3	146	447	914
Government.....	126	161	22	95	40	14	33	99	127	9	219	39	404	569	1,957
TOTAL.....	667	1,461	268	1,129	275	212	302	1,181	2,595	133	1,205	350	1,861	4,168	15,807

1976															
Agric., Forestry & Fishing.....	33	10	7	20	9	7	8	59	21	1	37	4	55	154	425
Mining.....	1	0	3	2	1	2	0	3	7	0	4	0	6	14	43
Construction.....	120	38	13	114	66	22	75	94	318	26	112	115	318	429	1,860
Manufacturing.....	509	900	66	775	126	76	60	654	2,150	79	445	167	798	2,112	8,917
Transportation & Pub. Utilities	95	99	5	42	13	14	16	35	101	15	143	23	152	243	996
Wholesale Trade.....	60	154	10	50	7	12	23	67	172	20	118	25	126	228	1,072
Retail Trade.....	76	171	6	93	7	13	24	72	101	4	83	29	155	363	1,197
Finance, Ins. & Real Estate....	5	2	2	1	0	1	2	3	3	2	15	1	15	26	78
Services.....	125	123	14	53	14	11	42	65	76	8	72	19	394	890	1,906
Public Administration.....	11	8	4	3	1	0	8	3	9	0	35	1	40	87	210
TOTAL.....	1,035	1,505	130	1,153	244	158	258	1,055	2,958	155	1,064	384	2,059	4,546	16,704

Table 4
STATE OF IOWA
NUMBER OF REPORTED DISABLING INJURIES
BY INDUSTRY DIVISION AND TYPE OF ACCIDENT
1975 - 1976

Industry Division	1975													
	Struck Against	Struck By	Fall From Elevation	Fall on Same Level	Caught In, Under Or Between	Rubbed or Abraded	Bodily Reaction	Overexertion	Contact With Electric Current	Contact With Temperature Extremes	Contact-radiation Caustics, etc.	Public Transportation Accidents	Motor Vehicle Accidents	Other
Agric., Forestry & Fisheries....	29	102	53	32	77	5	38	54	0	6	21	0	10	10
Mining.....	6	9	1	2	12	2	2	3	0	0	1	0	2	0
Contract Construction.....	89	187	186	80	106	45	92	243	9	34	33	0	30	14
Manufacturing.....	863	1,733	287	564	1,121	255	666	2,341	16	215	326	0	39	80
Transportation & Pub. Utilities.	50	116	93	89	66	27	106	163	9	18	27	1	49	12
Wholesale & Retail Trade.....	203	333	167	152	191	57	170	420	7	86	39	1	65	23
Finance, Ins. & Real Estate.....	4	6	17	9	6	1	2	10	0	1	0	0	9	0
Services.....	83	107	49	154	53	18	65	292	1	25	43	0	15	9
Government.....	179	284	164	295	127	20	269	409	6	55	71	0	54	24
TOTAL.....	1,506	2,877	1,017	1,377	1,759	430	1,410	3,935	48	440	561	2	273	172

1976														
Agric., Forestry & Fishing.....	21	91	52	43	73	12	33	55	1	5	20	0	10	9
Mining.....	1	12	0	3	4	1	5	8	0	3	4	0	1	1
Construction.....	99	326	302	143	118	118	210	359	8	54	54	0	42	27
Manufacturing.....	735	1,730	292	690	986	442	765	2,503	18	242	304	0	33	177
Transportation & Pub. Utilities.	48	138	90	112	57	34	147	242	10	16	18	0	61	23
Wholesale Trade.....	64	211	92	91	116	38	95	257	7	27	26	0	35	13
Retail Trade.....	111	239	71	138	71	55	101	266	0	71	20	0	24	30
Finance, Ins. & Real Estate.....	5	7	10	12	0	3	9	12	1	3	2	0	11	3
Services.....	96	254	129	370	95	47	185	530	3	59	67	0	26	45
Public Administration.....	11	36	27	28	9	0	24	30	1	2	11	0	24	7
TOTAL.....	1,191	3,044	1,065	1,630	1,529	750	1,574	4,262	49	482	526	0	267	335

Table 5
STATE OF IOWA
NUMBER OF REPORTED DISABLING INJURIES
BY INDUSTRY DIVISION AND TIME OF DAY
1975 - 1976

OT

Industry Division	1975												Not Listed	Total
	7 - 8 A.M.	8 - 9 A.M.	9 - 10 A.M.	10 - 11 A.M.	11 - 12 Noon	12 - 1 P.M.	1 - 2 P.M.	2 - 3 P.M.	3 - 4 P.M.	4 - 5 P.M.	5 - 6 P.M.	6 P.M. - 7 A.M.		
Agric., Forestry & Fisheries.....	14	22	44	39	29	14	20	37	39	34	20	39	86	437
Mining.....	1	2	7	2	1	0	2	7	5	1	1	6	5	40
Contract Construction.....	26	68	100	138	126	38	74	124	119	84	21	28	202	1,148
Manufacturing.....	384	544	585	641	477	263	462	518	442	313	220	1,818	1,839	8,506
Transportation & Pub. Utilities..	21	41	71	91	78	31	57	85	75	54	32	129	61	826
Wholesale & Retail Trade.....	35	109	145	198	183	56	111	171	191	142	83	240	250	1,914
Finance, Ins. & Real Estate.....	1	5	7	6	5	3	2	13	5	5	1	6	6	65
Services.....	30	51	58	97	71	27	56	67	46	42	33	195	141	914
Government.....	81	175	176	249	161	91	152	172	138	83	45	269	165	1,957
TOTAL.....	593	1,017	1,193	1,461	1,131	523	936	1,194	1,060	758	456	2,730	2,755	15,807

Industry Division	1976												Not Listed	Total
	7 - 8 A.M.	8 - 9 A.M.	9 - 10 A.M.	10 - 11 A.M.	11 - 12 Noon	12 - 1 P.M.	1 - 2 P.M.	2 - 3 P.M.	3 - 4 P.M.	4 - 5 P.M.	5 - 6 P.M.	6 P.M. - 7 A.M.		
Agric., Forestry & Fishing.....	18	20	28	44	37	9	22	39	35	39	20	39	75	425
Mining.....	2	2	3	4	4	3	3	2	5	2	4	4	5	43
Construction.....	47	135	162	257	204	58	128	216	175	96	27	64	291	1,860
Manufacturing.....	366	578	568	656	493	260	464	550	412	312	261	1,859	2,138	8,917
Transportation & Pub. Utilities..	22	60	99	106	102	37	68	90	82	44	22	172	92	996
Wholesale Trade.....	43	62	94	111	106	44	61	89	76	78	39	108	161	1,072
Retail Trade.....	19	51	82	136	83	46	74	107	94	86	28	225	166	1,197
Finance, Ins. & Real Estate.....	1	7	9	3	9	3	3	10	3	8	3	11	8	78
Services.....	67	123	144	186	146	103	119	164	140	82	40	364	228	1,906
Public Administration.....	7	21	9	19	13	8	13	13	14	9	8	63	13	210
TOTAL.....	592	1,059	1,198	1,522	1,197	571	955	1,280	1,036	756	452	2,909	3,177	16,704

Table 6
STATE OF IOWA
NUMBER OF REPORTED DISABLING INJURIES
BY INDUSTRY DIVISION AND MONTH
1975 - 1976

1975

Industry Division	January	February	March	April	May	June	July	August	September	October	November	December	Total
Agric., Forestry & Fisheries.....	24	28	30	31	49	48	59	45	39	40	24	20	437
Mining.....	3	4	6	5	3	2	2	3	3	3	4	2	40
Contract Construction.....	74	63	56	61	84	114	143	122	129	135	90	77	1,148
Manufacturing.....	774	784	704	758	648	702	675	709	739	792	625	596	8,506
Transportation & Pub. Utilities..	68	70	71	58	52	71	94	68	63	74	76	61	826
Wholesale & Retail Trade.....	161	132	148	163	169	134	159	160	181	204	147	156	1,914
Finance, Ins. & Real Estate.....	5	3	7	12	4	2	6	9	4	5	6	2	65
Services.....	80	76	85	66	75	78	83	86	72	84	60	69	914
Government.....	193	167	154	167	184	155	182	144	153	188	148	122	1,957
TOTAL.....	1,382	1,327	1,261	1,321	1,268	1,306	1,403	1,346	1,383	1,525	1,180	1,105	15,807

1976

Agric., Forestry & Fishing.....	33	25	36	40	44	41	49	43	28	38	31	17	425
Mining.....	4	1	8	6	3	3	3	7	2	5	1	0	43
Construction.....	160	116	115	129	161	163	206	186	181	166	144	133	1,860
Manufacturing.....	729	731	828	732	739	803	736	815	806	698	685	615	8,917
Transportation & Pub. Utilities..	91	88	93	73	64	89	79	101	86	90	66	76	996
Wholesale Trade.....	83	69	99	87	95	101	102	88	99	99	75	75	1,072
Retail Trade.....	101	89	111	118	97	100	100	100	88	104	89	100	1,197
Finance, Ins. & Real Estate.....	6	1	12	8	4	10	5	8	8	3	6	7	78
Services.....	158	144	171	157	157	153	138	161	184	172	153	158	1,906
Public Administration.....	16	14	14	16	16	23	15	19	25	19	17	16	210
TOTAL.....	1,381	1,278	1,487	1,366	1,380	1,486	1,433	1,528	1,507	1,394	1,267	1,197	16,704

Table 7
STATE OF IOWA
NUMBER OF REPORTED DISABLING INJURIES
BY INDUSTRY DIVISION, AGE AND SEX
1975 - 1976

1975

Industry Division	MALE								FEMALE								Total Both Sexes
	Under 20	20 - 29	30 - 39	40 - 49	50 - 59	60 and over	Not Listed	Total - Male	Under 20	20 - 29	30 - 39	40 - 49	50 - 59	60 and over	Not Listed	Total - Female	
Agric., Forest. & Fish....	59	148	60	40	41	50	18	416	3	6	6	1	2	2	1	21	437
Mining.....	1	17	9	6	2	3	1	39	0	0	0	0	1	0	0	1	40
Contract Construction.....	100	422	183	166	117	52	99	1,139	1	3	3	2	0	0	0	9	1,148
Manufacturing.....	518	2,784	1,438	1,122	908	289	95	7,154	53	397	308	300	231	41	22	1,352	8,506
Transportation & Pub. Util.	22	237	168	162	155	34	13	791	2	11	8	8	6	0	0	35	826
Wholesale & Retail Trade..	225	520	222	229	218	110	61	1,585	52	78	51	56	48	29	15	329	1,914
Finance, Ins. & Real Est..	4	13	9	4	5	9	0	44	2	5	6	3	2	1	2	21	65
Services.....	47	112	34	50	45	42	16	346	59	146	85	98	114	55	11	568	914
Government.....	71	387	292	236	310	162	32	1,490	15	68	73	91	142	67	11	467	1,957
TOTAL.....	1,047	4,640	2,415	2,015	1,801	751	335	13,004	187	714	540	559	546	195	62	2,803	15,807

1976

Agric., Forest. & Fish....	69	146	62	30	36	34	16	393	4	9	4	4	7	4	0	32	425
Mining.....	3	9	11	11	5	3	1	43	0	0	0	0	0	0	0	0	43
Construction.....	149	674	278	244	263	95	143	1,846	1	7	1	3	2	0	0	14	1,860
Manufacturing.....	567	3,125	1,454	1,114	835	262	77	7,434	93	490	358	287	197	40	18	1,483	8,917
Transportation & Pub. Util.	29	292	227	197	173	34	14	966	1	8	8	5	7	0	1	30	996
Wholesale Trade.....	110	385	178	152	106	55	40	1,026	5	18	7	9	5	0	2	46	1,072
Retail Trade.....	194	329	125	77	90	55	23	893	60	71	34	41	58	28	12	304	1,197
Finance, Ins. & Real Est..	4	16	7	8	11	10	0	56	3	4	2	9	4	0	0	22	78
Services.....	90	255	138	125	152	108	18	886	66	278	143	165	221	111	36	1,020	1,906
Public Administration.....	2	42	40	40	26	15	3	168	0	15	6	6	9	5	1	42	210
TOTAL.....	1,217	5,273	2,520	1,998	1,697	671	335	13,711	233	900	563	529	510	188	70	2,993	16,704

Table 8
STATE OF IOWA
NUMBER OF REPORTED DISABLING INJURIES
BY INDUSTRY DIVISION, SEVERITY AND SEX
1975 - 1976

1975											
Industry Division	MALE					FEMALE					Total - Both Sexes
	Death	Permanent Total Disability	Permanent Partial Disability	Temporary Total Disability	Total - Male	Death	Permanent Total Disability	Permanent Partial Disability	Temporary Total Disability	Total - Female	
Agric., Forestry & Fisheries....	6	1	17	392	416	0	0	0	21	21	437
Mining.....	3	0	1	35	39	0	0	0	1	1	40
Contract Construction.....	20	0	16	1,103	1,139	0	0	0	9	9	1,148
Manufacturing.....	19	0	145	6,990	7,154	0	0	28	1,324	1,352	8,506
Transportation & Pub. Utilities.	14	0	5	772	791	0	0	0	35	35	826
Wholesale & Retail Trade.....	23	0	29	1,533	1,585	1	0	6	322	329	1,914
Finance, Ins. & Real Estate.....	1	0	1	42	44	0	0	0	21	21	65
Services.....	1	0	6	339	346	0	0	3	565	568	914
Government.....	11	0	11	1,468	1,490	0	0	0	467	467	1,957
TOTAL.....	98	1	231	12,674	13,004	1	0	37	2,765	2,803	15,807
1976											
Agric., Forestry & Fishing.....	8	0	13	372	393	0	0	2	30	32	425
Mining.....	2	0	0	41	43	0	0	0	0	0	43
Construction.....	30	0	20	1,796	1,846	0	0	0	14	14	1,860
Manufacturing.....	14	0	116	7,304	7,434	1	0	16	1,466	1,483	8,917
Transportation & Pub. Util.....	11	0	7	948	966	0	0	2	28	30	996
Wholesale Trade.....	10	0	17	999	1,026	0	0	0	46	46	1,072
Retail Trade.....	9	0	14	870	893	0	0	0	304	304	1,197
Finance, Ins. & Real Estate.....	2	0	1	53	56	0	0	0	22	22	78
Services.....	9	0	3	874	886	1	0	2	1,017	1,020	1,906
Public Administration.....	9	0	2	157	168	0	0	0	42	42	210
TOTAL.....	104	0	193	13,414	13,711	2	0	22	2,969	2,993	16,704

Table 9
STATE OF IOWA
DISTRIBUTION OF REPORTED DISABLING INJURIES
ALL INDUSTRIES - BY NATURE OF INJURY
1975 - 1976

	1975		1976	
	Number	Percent	Number	Percent
Amputation.....	265	1.7%	244	1.5%
Burns-heat & chemical.....	592	3.7	623	3.7
Contagious or infectious disease.....	80	.5	56	.3
Contusion, crushing or bruise.....	2,593	16.4	2,578	15.4
Cut, laceration or puncture.....	2,455	15.5	2,628	15.7
Dermatitis.....	178	1.1	170	1.0
Dislocation.....	369	2.3	356	2.1
Electric shock, electrocution.....	24	.1	13	.1
Fracture.....	1,845	11.7	1,746	10.5
Hernia.....	295	1.9	319	1.9
Inflammation or irritation.....	230	1.5	235	1.4
Scratches or abrasions.....	422	2.7	497	3.0
Sprains or strains.....	5,864	37.1	6,413	38.4
Other.....	595	3.8	826	5.0
TOTAL.....	15,807	100.0%	16,704	100.0%

Table 10
STATE OF IOWA
DISTRIBUTION OF REPORTED DISABLING INJURIES
ALL INDUSTRIES - BY PART OF BODY AFFECTED
1975 - 1976

	1975		1976	
	Number	Percent	Number	Percent
Head.....	934	5.9%	1,005	6.0%
(Eyes).....	438	2.8	495	3.0
Neck.....	194	1.2	219	1.3
Upper Extremities.....	4,749	30.0	4,915	29.4
(Arms).....	951	6.0	937	5.6
(Fingers).....	2,316	14.7	2,368	14.2
Trunk.....	5,583	35.3	6,103	36.5
(Back).....	3,606	22.8	4,074	24.4
Lower Extremities.....	3,488	22.1	3,667	22.0
(Legs).....	1,482	9.4	1,521	9.1
(Feet).....	854	5.4	884	5.3
Multiple parts.....	557	3.5	478	2.9
Body system.....	277	1.8	285	1.7
Body parts, n.e.c. and unclassified.....	25	.2	32	.2
TOTAL.....	15,807	100.0%	16,704	100.0%

Table 11
STATE OF IOWA
DISTRIBUTION OF REPORTED DISABLING INJURIES
ALL INDUSTRIES - BY SOURCE OF INJURY
1975 - 1976

	1975		1976	
	Number	Percent	Number	Percent
Bodily motion.....	667	4.2%	1,035	6.2%
Boxes, barrels & other containers.....	1,461	9.3	1,505	9.0
Chemicals.....	268	1.7	130	.8
Hand tools--not powered.....	1,129	7.2	1,153	6.9
Hand tools--powered.....	275	1.7	244	1.5
Hoisting apparatus.....	212	1.3	158	1.0
Ladders.....	302	1.9	258	1.5
Machines.....	1,181	7.5	1,055	6.3
Metal items.....	2,595	16.4	2,958	17.7
Particles (unidentified).....	133	.8	155	.9
Vehicles.....	1,205	7.6	1,064	6.4
Wood items.....	350	2.2	384	2.3
Working surfaces.....	1,861	11.8	2,059	12.3
Other.....	4,168	26.4	4,546	27.2
TOTAL.....	15,807	100.0%	16,704	100.0%

Table 12
STATE OF IOWA
DISTRIBUTION OF REPORTED DISABLING INJURIES
ALL INDUSTRIES - BY TYPE OF ACCIDENT
1975 - 1976

	1975		1976	
	Number	Percent	Number	Percent
Struck against.....	1,506	9.5%	1,191	7.1%
Struck by.....	2,877	18.2	3,044	18.2
Fall from elevation.....	1,017	6.4	1,065	6.4
Fall on same level.....	1,377	8.7	1,630	9.8
Caught in, under or between.....	1,759	11.1	1,529	9.2
Rubbed or abraded.....	430	2.7	750	4.5
Bodily reaction.....	1,410	8.9	1,574	9.4
Overexertion.....	3,935	24.9	4,262	25.5
Contact with electric current.....	48	.3	49	.3
Contact with temperature extremes.....	440	2.8	482	2.9
Contact with radiations, caustics, etc..	561	3.6	526	3.1
Public transportation accidents.....	2	.1	0	.0
Motor-vehicle accidents.....	273	1.7	267	1.6
Other.....	172	1.1	335	2.0
TOTAL.....	15,807	100.0%	16,704	100.0%

Table 13
STATE OF IOWA
DISTRIBUTION OF REPORTED DISABLING INJURIES
AND EMPLOYMENT - BY INDUSTRY DIVISION
1975 - 1976

1975

Industry Division	Employment ^{1/}		Injuries	
	Number	Percent	Number	Percent
Agric., Forestry & Fisheries.....	41,500	4.0%	437	2.8%
Mining.....	2,800	.3	40	.2
Contract Construction.....	46,500	4.5	1,148	7.3
Manufacturing.....	229,600	22.3	8,506	53.8
Transportation & Public Utilities.....	54,700	5.3	826	5.2
Wholesale & Retail Trade.....	244,900	23.8	1,914	12.1
Finance, Ins. & Real Estate.....	47,200	4.6	65	.4
Services.....	172,000	16.7	914	5.8
Government.....	190,800	18.5	1,957	12.4
Total.....	1,030,000	100.0%	15,807	100.0%

1976

Industry Division	Employment ^{1/}		Injuries	
	Number	Percent	Number	Percent
Agric., Forestry & Fishing.....	47,400	4.5%	425	2.5%
Mining.....	2,700	.3	43	.2
Construction.....	46,800	4.4	1,860	11.1
Manufacturing.....	231,400	21.9	8,917	53.4
Transportation & Public Utilities.....	66,500	6.3	996	6.0
Wholesale Trade.....	68,600	6.5	1,072	6.4
Retail Trade.....	185,000	17.5	1,197	7.2
Finance, Ins. & Real Estate.....	47,800	4.5	78	.5
Services.....	309,100	29.2	1,906	11.4
Public Administration.....	51,300	4.9	210	1.3
Total.....	1,056,600	100.0%	16,704	100.0%

^{1/} Annual average nonagricultural wage and salary employment is estimated from the Bureau of Labor Statistics Employment and Earnings Survey conducted in cooperation with the Iowa Department of Job Service, Research and Statistics Department. Annual average employment for agricultural production is provided by the Statistical Reporting Service, U. S. Department of Agriculture.

Table 14
STATE OF IOWA
NUMBER OF REPORTED DISABLING INJURIES
BY COUNTY
1975 - 1976

COUNTY	1975	1976
Adair.....	33	21
Adams.....	7	9
Allamakee.....	42	74
Appanoose.....	39	28
Audubon.....	26	27
Benton.....	82	102
Black Hawk.....	1,885	1,702
Boone.....	155	198
Bremer.....	54	46
Buchanan.....	90	96
Buena Vista.....	92	110
Butler.....	37	36
Calhoun.....	32	33
Carroll.....	65	69
Cass.....	65	55
Cedar.....	49	38
Cerro Gordo.....	257	320
Cherokee.....	139	152
Chickasaw.....	78	89
Clarke.....	27	32
Clay.....	154	177
Clayton.....	77	108
Clinton.....	244	236
Crawford.....	214	223
Dallas.....	112	134
Davis.....	10	14
Decatur.....	24	13
Delaware.....	132	158
Des Moines.....	188	196
Dickinson.....	81	101
Dubuque.....	551	788
Emmet.....	52	53
Fayette.....	89	101
Floyd.....	165	114
Franklin.....	86	116
Fremont.....	36	24
Greene.....	60	84
Grundy.....	43	45
Guthrie.....	43	31
Hamilton.....	98	122
Hancock.....	22	42
Hardin.....	104	125
Harrison.....	41	49
Henry.....	108	83
Howard.....	31	37
Humboldt.....	67	80
Ida.....	30	19
Iowa.....	122	95
Jackson.....	88	72
Jasper.....	158	183

COUNTY	1975	1976
Jefferson.....	89	102
Johnson.....	269	375
Jones.....	55	54
Keokuk.....	37	33
Kossuth.....	78	127
Lee.....	244	227
Linn.....	1,466	1,605
Louisa.....	51	78
Lucas.....	93	80
Lyon.....	30	30
Madison.....	23	22
Mahaska.....	89	131
Marion.....	96	77
Marshall.....	359	322
Mills.....	73	94
Mitchell.....	43	27
Monona.....	38	20
Monroe.....	40	37
Montgomery.....	20	25
Muscatine.....	254	353
O'Brien.....	36	50
Osceola.....	36	13
Page.....	89	60
Palo Alto.....	38	30
Plymouth.....	54	57
Pocahontas.....	49	37
Polk.....	2,281	2,205
Pottawattamie.....	256	297
Poweshiek.....	73	64
Ringgold.....	9	7
Sac.....	75	70
Scott.....	594	674
Shelby.....	34	32
Sioux.....	130	146
Story.....	266	284
Tama.....	52	62
Taylor.....	16	20
Union.....	54	23
Van Buren.....	10	16
Wapello.....	229	260
Warren.....	104	126
Washington.....	84	85
Wayne.....	13	14
Webster.....	349	377
Winnebago.....	197	260
Winneshiek.....	44	41
Woodbury.....	622	622
Worth.....	26	31
Wright.....	56	62
Unlisted.....	0	0
TOTAL.....	15,807	16,704

TECHNICAL NOTES

Scope of the Data

The accompanying tables represent first report data for calendar years 1975 and 1976 for fatalities and those cases involving two or more lost workdays submitted to the Iowa Bureau of Labor by employers as required by the Iowa Occupational Safety and Health Act. The day of injury is not included in determining the number of lost workdays. The count of lost workdays includes all days (consecutive or not) on which, because of the injury or illness: 1) the employee would have worked, but could not, or 2) the employee was assigned to a temporary job, or 3) the employee worked at a permanent job less than full time, or 4) the employee worked at a permanently assigned job but could not perform all duties normally assigned to it.

All classes of employees (production, operating and related workers; construction workers; sales, service, delivery, technical, professional, office, administrative, clerical and all other personnel) are included. There are no limitations of coverage based on employment-size of the establishment nor on injury or illness types. Self-employed persons and partners of unincorporated firms, however, are not included. Government totals shown include occupational injuries and illnesses for State and local government workers. Federal employers are not required to report to the Iowa Bureau of Labor.

Industrial Classification

Industrial classification conforms to the definitions included in the Standard Industrial Classification Manual prepared by the Statistical Policy Division of the Office of Management and Budget. Data for 1975 are classified according to the 1967 Edition of the SIC Manual; data for calendar year 1976 conform to the definitions of the 1972 Edition of the Manual.

In the 1972 Edition of the SIC Manual, "government" is removed as an industry division and is treated as an ownership characteristic. Government establishments in 1976, therefore, are classified in the accompanying tables by their primary economic activity rather than by type of ownership.

Coding of Injury or Illness Characteristics

Occupational injuries and illnesses reported to the Iowa Bureau of Labor were coded for their characteristics according to the "American National Standard Method of Recording Basic Facts Relating to the Nature and Occurrence of Work Injuries", ANSI Z16.2-1962 (R 1969). Wherever used in titles, the term "injury" includes occupational diseases.

Reporting Requirement

Iowa employers are required to file an "Employers' Work Injury Report" (first report of injury) with the Bureau of Labor no later than six working days after receiving information that an occupational injury or illness will result in two or more lost workdays. In addition, employers must report to the Iowa Labor Commissioner within 48 hours each accident or health hazard that results in one or more fatalities or hospitalization of five or more employees.

Federal-State Cooperation

Work injury and illness data are collected, coded, and tabulated by the Iowa Bureau of Labor in cooperation with the U. S. Department of Labor, Bureau of Labor Statistics as part of the Supplementary Data System. The Supplementary Data System is a means of securing information about the factors associated with accidents and exposures in the workplace. Such information is useful in helping direct measures to reduce the incidence of occupational injuries and illnesses.

These findings are reported in this report. The findings are based on a review of the literature and on a series of interviews with experts in the field. The findings are presented in a series of sections, each dealing with a different aspect of the problem. The findings are presented in a series of sections, each dealing with a different aspect of the problem. The findings are presented in a series of sections, each dealing with a different aspect of the problem.

The findings are presented in a series of sections, each dealing with a different aspect of the problem. The findings are presented in a series of sections, each dealing with a different aspect of the problem. The findings are presented in a series of sections, each dealing with a different aspect of the problem. The findings are presented in a series of sections, each dealing with a different aspect of the problem. The findings are presented in a series of sections, each dealing with a different aspect of the problem.

The findings are presented in a series of sections, each dealing with a different aspect of the problem. The findings are presented in a series of sections, each dealing with a different aspect of the problem. The findings are presented in a series of sections, each dealing with a different aspect of the problem. The findings are presented in a series of sections, each dealing with a different aspect of the problem. The findings are presented in a series of sections, each dealing with a different aspect of the problem.

The findings are presented in a series of sections, each dealing with a different aspect of the problem. The findings are presented in a series of sections, each dealing with a different aspect of the problem. The findings are presented in a series of sections, each dealing with a different aspect of the problem. The findings are presented in a series of sections, each dealing with a different aspect of the problem. The findings are presented in a series of sections, each dealing with a different aspect of the problem.

The findings are presented in a series of sections, each dealing with a different aspect of the problem. The findings are presented in a series of sections, each dealing with a different aspect of the problem. The findings are presented in a series of sections, each dealing with a different aspect of the problem. The findings are presented in a series of sections, each dealing with a different aspect of the problem. The findings are presented in a series of sections, each dealing with a different aspect of the problem.

SECTION II

WORK RELATED DEATHS

SUMMARY

There were 205 work-related deaths reported to the Iowa Bureau of Labor during the 1975-1976 biennium. Of these, 99 happened in 1975 and 106 in 1976. An average of 1 out of every 10,000 Iowa workers died as a result of work-related causes. The majority of the fatalities involved male workers. However, 3 women died in the course of their employment: 1 in 1975 and 2 in 1976.

The average age of persons suffering fatal injuries in 1975 was 39. The youngest worker killed in 1975 was 15 years old and the oldest was 76 years of age. In 1976, the average age of reported fatal cases was 43, with the ages of the deceased ranging from 15 to 78.

In the construction industry division, 43 fatalities were reported to the Bureau of Labor during the 1975-1976 period. This reflects a continued decrease in the number of reported deaths over the last four bienniums. During the 1969-1970 biennium, 64 deaths occurred; in the 1971-1972 biennium, there were 57 work-related fatalities; and 51 fatalities were reported in the 1973-1974 period. The 43 deaths reported in the 1975-1976 biennium reflect a 33 percent drop over the four biennial periods.

There were 34 deaths reported during the 1975-1976 biennium in the manufacturing industry division. This is 24 percent fewer than the 45 reported in the 1973-1974 period. In 1975, 19 manufacturing employees died; 15 deaths occurred in 1976. One of every 6 deaths during the last biennium occurred in manufacturing while about one of every 5 employees worked in the manufacturing industries.

During the 1975-1976 biennium, about 17 percent of the total number of reported deaths were sustained by government employees. Thirty-four government workers died of work-related causes during the two years. Of these, 8 were state employees and 26 were local government workers.

In the transportation and public utilities industry division, 23 persons suffered fatal injuries during the 1975-1976 biennium; 14 died in 1975 and 9 in 1976. One of the fatally injured persons worked in electric, gas and sanitary services; 2 were communication workers and 20 were employed in transportation industries.

Forty employees lost their lives in the 1975-1976 period while working in the wholesale and retail trade industry division. In 1975, 23 workers died and in 1976, 17 employees were fatally injured.

The remaining industry divisions accounted for 31 work-related deaths during the biennium. Agriculture, forestry and fisheries employees were involved in 14 fatal accidents; 5 mining workers were killed on the job; in the finance, insurance and real estate industry division, 4 workers were fatally injured; and employment in the services industry division resulted in the death of 8 persons.

The following tables and descriptions of the work-related deaths that were reported to the Iowa Bureau of Labor indicate a continued need for emphasis on job safety and health, both by employers and employees. Education and compliance efforts by the Bureau of Labor and a growing awareness and acceptance of job safety and health standards by employers and workers will help prevent needless fatalities in the future.

Table 1
STATE OF IOWA
REPORTED WORK RELATED DEATHS
BY INDUSTRY DIVISION
1975 - 1976

Industry Division	1975		1976		Total 1975-1976	
	Num- ber	Per- cent	Num- ber	Per- cent	Num- ber	Per- cent
Agriculture, Forestry & Fisheries...	6	6.1%	8	7.5%	14	6.8%
Mining.....	3	3.0	2	1.9	5	2.4
Construction.....	20	20.2	23	21.7	43	21.0
Manufacturing.....	19	19.2	15	14.2	34	16.6
Transportation & Pub. Utilities.....	14	14.2	9	8.5	23	11.2
Wholesale & Retail Trade.....	23	23.2	17	16.0	40	19.5
Finance, Ins. & Real Estate.....	2	2.0	2	1.9	4	2.0
Services.....	1	1.0	7	6.6	8	3.9
Government.....	11	11.1	23	21.7	34	16.6
TOTAL.....	99	100.0%	106	100.0%	205	100.0%

Table 2
STATE OF IOWA
REPORTED WORK RELATED DEATHS
BY CAUSE
1975 - 1976

Cause	1975		1976		Total 1975-1976	
	Num- ber	Per- cent	Num- ber	Per- cent	Num- ber	Per- cent
Subject to IOSH/OSHA control:						
Falls.....	13	13.1%	11	10.4%	24	11.7%
Crushing injuries.....	10	10.1	13	12.3	23	11.2
Struck by object.....	10	10.1	10	9.5	20	9.8
Electrocution.....	6	6.1	7	6.6	13	6.3
Suffocation.....	8	8.1	5	4.7	13	6.3
Explosion.....	6	6.1	1	.9	7	3.4
Caught in, under or between.....	4	4.0	2	1.9	6	2.9
Burns.....	3	3.0	1	.9	4	2.0
Drowning.....	1	1.0	3	2.8	4	2.0
Poisoning.....	0	-	1	.9	1	.5
Mesothelioma (cancer).....	0	-	1	.9	1	.5
	61	(61.6)	55	(51.8)	116	(56.6)
Not controllable by IOSHA/OSHA:						
Heart attack/stroke.....	17	17.2	29	27.4	46	22.4
Vehicle accident.....	20	20.2	19	18.0	39	19.0
Gun shot.....	0	-	3	2.8	3	1.5
Air crash.....	1	1.0	0	-	1	.5
	38	(38.4)	51	(48.2)	89	(43.4)
TOTAL	99	100.0%	106	100.0%	205	100.0%

Table 3
STATE OF IOWA
DISTRIBUTION OF REPORTED WORK RELATED DEATHS
AND EMPLOYMENT - BY INDUSTRY DIVISION
1975 - 1976

1975

Industry Division	Employment ^{1/}		Deaths	
	Number	Percent	Number	Percent
Agric., Forestry & Fisheries.....	41,500	4.0%	6	6.1%
Mining.....	2,800	.3	3	3.0
Construction.....	46,500	4.5	20	20.2
Manufacturing.....	229,600	22.3	19	19.2
Transportation & Public Utilities.....	54,700	5.3	14	14.2
Wholesale & Retail Trade.....	244,900	23.8	23	23.2
Finance, Ins. & Real Estate.....	47,200	4.6	2	2.0
Services.....	172,000	16.7	1	1.0
Government.....	190,800	18.5	11	11.1
TOTAL.....	1,030,000	100.0%	99	100.0%

1976

Industry Division	Employment ^{1/}		Deaths	
	Number	Percent	Number	Percent
Agric., Forestry & Fisheries.....	47,400	4.5%	8	7.5%
Mining.....	2,700	.2	2	1.9
Construction.....	46,800	4.4	23	21.7
Manufacturing.....	231,300	21.9	15	14.2
Transportation & Public Utilities.....	54,800	5.2	9	8.5
Wholesale & Retail Trade.....	252,400	23.9	17	16.0
Finance, Ins. & Real Estate.....	47,500	4.5	2	1.9
Services.....	178,300	16.9	7	6.6
Government.....	195,300	18.5	23	21.7
TOTAL.....	1,056,500	100.0%	106	100.0%

1975 - 1976

Industry Division	Employment ^{1/}		Deaths	
	Number	Percent	Number	Percent
Agric., Forestry & Fisheries.....	44,450	4.3%	14	6.8%
Mining.....	2,750	.3	5	2.4
Construction.....	46,650	4.5	43	21.0
Manufacturing.....	230,450	22.1	34	16.6
Transportation & Public Utilities.....	54,750	5.2	23	11.2
Wholesale & Retail Trade.....	248,650	23.8	40	19.5
Finance, Ins. & Real Estate.....	47,350	4.5	4	2.0
Services.....	175,150	16.8	8	3.9
Government.....	193,050	18.5	34	16.6
TOTAL.....	1,043,250	100.0%	205	100.0%

^{1/} Nonagricultural wage and salary employment is prepared by the Research and Statistics Department of the Iowa Department of Job Service in cooperation with the U. S. Department of Labor, Bureau of Labor Statistics. March 1975 benchmark. Annual average employment for the agriculture, forestry and fisheries division is a composite of estimates from the Department of Job Service and estimates provided by the Statistical Reporting Service, U.S. Department of Agriculture.

Table 4
STATE OF IOWA
INDUSTRY RANKING BASED ON
REPORTED WORK RELATED DEATHS
1975

Industry	Rank ^{1/}	Number of Deaths	Deaths per 10,000 Employees
Pipe line transportation.....	1	2	94.79
Bituminous coal & lignite mining.....	2	1	92.59
Water transportation.....	3	1	62.11
Transportation by air.....	4	1	10.79
Mining of nonmetallic minerals, except fuels..	5	2	7.77
Heavy construction contractors.....	6	6	6.83
Local & interurban passenger transit.....	7	1	5.35
Special trade contractors.....	8	9	3.96
Railroad transportation.....	9	3	3.35
General building contractors.....	10	5	3.27
Miscellaneous retail stores.....	11	7	3.26
Store, clay & glass products-mfg.....	12	2	3.10
Building materials & farm equip.-retail.....	13	5	2.83
Furniture & fixtures-mfg.....	14	1	2.70
Trucking & warehousing.....	15	4	2.29
Agriculture services & hunting.....	16	1	2.22
Lumber & wood products-mfg.....	17	1	2.17
Food & kindred products-mfg.....	18	9	1.85
Real estate.....	19	1	1.81
Wholesale Trade.....	20	9	1.80
Communication.....	21	2	1.49
Agricultural production.....	22	5	1.35
Chemicals & allied products-mfg.....	23	1	1.33
Machinery, except electrical-mfg.....	24	5	.85
Local government.....	25	9	.73
Insurance carriers.....	26	1	.66
Nonprofit membership organizations.....	27	1	.59
State government.....	28	2	.42
Eating & drinking places-retail.....	29	2	.39
TOTAL - All industries.....	--	99	.96

^{1/} Ranked by the number of deaths per 10,000 employees.

Note: A high rate of deaths per 10,000 employees where only a few deaths are indicated results from a low employment level in the industry.

Table 5
STATE OF IOWA
INDUSTRY RANKING BASED ON
REPORTED WORK RELATED DEATHS
1976

Industry	Rank ^{1/}	Number of Deaths	Deaths per 10,000 Employees
Transportation services.....	1	1	12.24
Mining of nonmetallic minerals, except fuels..	2	2	8.69
Heavy construction contractors.....	3	6	6.40
Stone, clay & glass products-mfg.....	4	5	6.13
General building contractors.....	5	9	5.20
Chemicals & allied products-mfg.....	6	3	4.39
Trucking & warehousing.....	7	6	3.90
Real estate.....	8	2	3.32
Special trade contractors.....	9	8	3.12
Paper & allied products-mfg.....	10	1	3.03
Amusement & recreation services.....	11	2	2.55
Auto repair, services & garages.....	12	1	1.90
Agricultural production, crops or livestock...	13	8	1.87
Wholesale trade-nondurables.....	14	7	1.85
Building materials & garden supplies-retail...	15	2	1.56
Local government.....	16	17	1.33
State government.....	17	6	1.23
Business services.....	18	2	1.21
Railroad transportation.....	19	1	1.13
Transportation equipment-mfg.....	20	1	1.08
Automotive dealers & service stations.....	21	3	1.02
Electric, gas & sanitary services.....	22	1	.94
Wholesale trade-durables.....	23	3	.89
Printing & publishing-mfg.....	24	1	.64
Fabricated metal products-mfg.....	25	1	.55
Educational services.....	26	1	.48
Food stores.....	27	1	.36
Machinery, except electrical-mfg.....	28	2	.31
Food & kindred products-mfg.....	29	1	.21
Eating & drinking places-retail.....	30	1	.17
Health services.....	31	1	.15
TOTAL - All industries.....	--	106	1.00

^{1/} Ranked by the number of deaths per 10,000 employees.

Note: A high rate of deaths per 10,000 employees where only a few deaths are indicated results from a low employment level in the industry.

STATE OF IOWA
SUMMARY OF WORK RELATED DEATHS
1975

<u>No.</u>	<u>Date</u>	<u>Industry</u>	<u>Occupation</u>	<u>Age</u>	<u>Cause of Death</u>
1.	1- 7-75	Wholesale Trade	Truck Driver	27	Vehicle Accident
The employee was driving a truck which was involved in an accident.					
2.	1- 8-75	Air Transportation	Pilot	36	Air Crash
The employee was killed when his aircraft crashed 3 minutes after takeoff.					
3.	1- 8-75	Special Trade Contr.	Helper	19	Crushed
The victim was standing on counterweight buffer between the rails of a running elevator. The counterweight came down and crushed the victim between the weights and the beam.					
4.	1-15-75	Agricultural Prod.	Farm Laborer	24	Vehicle Accident
The employee was driving a pickup which collided with a truck-tractor.					
5.	1-17-75	Trucking & Warehousing	Warehouseman	22	Suffocation
The gate wall collapsed while the employee was plugging holes in the bin wall with sacks and he was buried under fertilizer.					
6.	1-23-75	Pipe Line Trans.	Maintenance	28	Burns-explosion
7.	1-23-75	Pipe Line Trans.	Maintenance	29	Burns-explosion
The employees were injecting methanol into a chiller unit when the unit exploded.					
8.	1-23-75	Nonpft. Membrshp. Org.	Trainee	46	Fall
The employee was walking across a stack of 2 x 12 lumber which was stacked 4 boards high on the back of a truck when he stepped off the end of the stack and fell 5 feet to the ground.					
9.	1-27-75	Food and Kindred Prod.	Resale Store Spvr.	62	Heart Attack
The employee was cleaning after the store had closed and suffered a heart attack.					

327030

29

STATE OF IOWA
SUMMARY OF WORK RELATED DEATHS
1975 - Continued

<u>No.</u>	<u>Date</u>	<u>Industry</u>	<u>Occupation</u>	<u>Age</u>	<u>Cause of Death</u>
10.	1-27-75	State Government	Boiler Operator	57	Burns
The victim was attempting to relight the fire with fuel oil when the fire puffed back at him, setting his clothes on fire. The accident occurred on 1-12-75 and the victim died on 1-27-75.					
11.	2- 4-75	Food and Kindred Prod.	Truck Driver	35	Vehicle Accident
An oncoming truck lost control on a slippery road and hit the employee's truck.					
12.	2- 5-75	Wholesale Trade	Truck Driver	66	Heart Attack
The worker walked to a house to check when the road would be open after finding the road blocked. He sat down and suffered a heart attack.					
13.	2- 7-75	State Government	Hwy. Maintenance	59	Heart Attack
The victim was operating an endloader when he became ill and died of a heart attack.					
14.	2-20-75	Bldg. Mtrl. & Farm Equip.	Yardman	74	Fall
The employee was helping unload timber from a box car and fell getting out of the box car.					
15.	2-24-75	Misc. Retail Store	Foreman	60	Stroke
The worker was unclogging an auger and was trying to rotate the pulley when he was stricken. He became ill on 1-30-75 and died on 2-24-75.					
16.	3- 5-75	Genl. Bldg. Contr.	Laborer	18	Struck By
The victim was trying to locate a pipe in the bottom of a ditch when a large chunk of frozen material (6'x6'x6') struck the victim and broke his neck.					
17.	3- 6-75	Trucking & Warehousing	Truck Driver	53	Vehicle Accident
The bridge collapsed forcing the employee to drive his truck into the creek.					

STATE OF IOWA
SUMMARY OF WORK RELATED DEATHS
1975 - Continued

<u>No.</u>	<u>Date</u>	<u>Industry</u>	<u>Occupation</u>	<u>Age</u>	<u>Cause of Death</u>
18.	3-10-75	Local Government	Truck Driver	57	Crushed
The worker's pickup slid into a ditch and an endloader was attempting to dig it out. The endloader slid and pinned the victim between the loader bucket and the pickup bumper.					
19.	3-11-75	Mach., Exc. Elec.	Spot Welder	NR	Heart Attack
The employee was welding a cabinet when he suffered a heart attack.					
20.	3-20-75	Special Trade Contr.	Roofer	61	Heart Attack
The employee was pushing an empty wheelbarrow when he collapsed.					
21.	3-27-75	Bldg. Mtrl. & Farm Equip.	Mechanic	53	Stroke
The employee lifted a cultivator beam onto a truck and suffered a stroke.					
22.	3-29-75	Misc. Retail Store	Salesman & Helper	70	Heart Attack
The employee was filling garden seed packets on 2-22-75 and became ill. He died on 3-29-75.					
23.	4- 3-75	Genl. Bldg. Contr.	Welder	31	Fall
The victim was working in the bosun's chair and fell approximately 80 feet when the cable broke.					
24.	4-11-75	Misc. Retail Store	District Manager	NR	Vehicle Accident
The employee was returning from a regional meeting when his car hit a bridge.					
25.	4-21-75	Mach., Exc. Elec.	Leadman	31	Struck By
The victim was preparing to attach a clip to the mast of the stacker when the carriage of the stacker fell striking him.					

NR = Not Reported

STATE OF IOWA
SUMMARY OF WORK RELATED DEATHS
1975 - Continued

<u>No.</u>	<u>Date</u>	<u>Industry</u>	<u>Occupation</u>	<u>Age</u>	<u>Cause of Death</u>
26.	4-28-75	Local Government	Maint. Supt.	53	Vehicle Accident
The victim died after the collision of his vehicle and another while he was checking road and drainage problems.					
27.	4-29-75	Misc. Retail Store	Elevator Worker	57	Heart Attack
The worker suffered a heart attack after spraying weeds with weed killer.					
28.	5- 1-75	Wholesale Trade	Cattle Salesman	41	Vehicle Accident
The employee's truck collided with another truck at an intersection while he was out appraising cattle for future sale.					
29.	5- 2-75	Local Government	Laborer	52	Heart Attack
The employee suffered a heart attack while at work.					
30.	5- 6-75	Trucking & Warehousing	Warehouseman	24	Suffocation
The victim was operating a front endloader digging down a pile of calcium ammonium nitrate. A beam supporting a bin wall gave way and the bin wall and the fertilizer fell covering the victim.					
31.	5- 9-75	Trucking & Warehousing	Truck Driver	19	Electrocution
The worker was operating a truck crane unloading concrete block which came into contact with a 13,000 volt power line.					
32.	5-16-75	Eating & Drinking Places	Painter	64	Fall
The employee fell from a ladder while working outside the building. He died of chest injuries.					
33.	5-16-75	Chemicals & Allied Prod.	Ink Maker	20	Caught In
The employee was cleaning the ink disperser with cleaner and a rag. He did not shut the machine off, the rag caught on the blade and the victim was pulled forward where the rotating blade struck his head.					

STATE OF IOWA
SUMMARY OF WORK RELATED DEATHS
1975 - Continued

<u>No.</u>	<u>Date</u>	<u>Industry</u>	<u>Occupation</u>	<u>Age</u>	<u>Cause of Death</u>
34.	5-23-75	Food and Kindred Prod.	Sweeper	42	Explosion
A grain elevator exploded causing the victim to die instantly. (See Nos. 35, 39 and 43.)					
35.	5-23-75	Food and Kindred Prod.	Blender Operator	51	Explosion
A grain elevator exploded killing the victim instantly. His body was not found for several days. (See Nos. 34, 39 and 43.)					
36.	5-24-75	Mach., Exc. Elec.	Laborer	16	Crushed
The victim was operating a fork lift truck which tipped over. The safety bar on the fork lift caught him and broke his neck.					
37.	5-25-75	Food and Kindred Prod.	Truck Driver	50	Vehicle Accident
The worker was driving a truck which ran off the road and caught fire. He was burned to death.					
38.	5-27-75	Agricultural Prod.	Farm Hand	58	Heart Attack
The victim was moving dirt with a tractor and suffered a heart attack.					
39.	6- 2-75	Food and Kindred Prod.	Sweeper	56	Explosion
The employee suffered severe burns when a grain elevator exploded on 5-23-75. He died on 6-2-75. (See Nos. 34, 35 and 43.)					
40.	6- 6-75	Special Trade Contr.	Electrician's Helper	26	Vehicle Accident
The employee was a passenger in a vehicle which was struck by another vehicle.					
41.	6- 6-75	Mach., Exc. Elec.	Maintenance	52	Struck By
The employee was working on an air line which exploded when the connective bolts were loosened.					

STATE OF IOWA
SUMMARY OF WORK RELATED DEATHS
1975 - Continued

<u>No.</u>	<u>Date</u>	<u>Industry</u>	<u>Occupation</u>	<u>Age</u>	<u>Cause of Death</u>
42.	6-11-75	Genl. Bldg. Contr.	Carpenter	65	Fall
The worker fell from a 8 foot height as he was bending over nailing.					
43.	6-13-75	Food and Kindred Prod.	Sweeper	42	Explosion
The employee suffered severe burns when a grain elevator exploded on 5-23-75. He died on 6-13-75. (See Nos. 34, 35 and 39.)					
44.	6-19-75	Real Estate	Laborer	17	Crushed
The victim was mowing grass using a tractor with a brush cutter when he fell from the tractor and it ran over him.					
45.	6-21-75	Special Trade Contr.	Repairman	19	Vehicle Accident
The employee was involved in a vehicle accident.					
46.	6-24-75	Genl. Bldg. Contr.	Carpenter	27	Electrocution
The victim received a fatal shock as he was operating a power saw cutting masonite siding.					
47.	6-24-75	Local Government	Manager	40	Fall
The ropes were slacked off as the employee was removing tower from the roof of a building causing the employee and the tower to fall.					
48.	6-26-75	Agric. Svc. & Hunting	Laborer	16	Vehicle Accident
The employee was riding on a truck carrying a load of sod when the truck over-turned crushing him.					
49.	6-27-75	Special Trade Contr.	Mason Tender	20	Fall
The worker was pulling a pallet of concrete block with a pallet truck. He fell through a hole in the concrete roof which was covered with plywood fastened down with ramset nails.					

STATE OF IOWA
SUMMARY OF WORK RELATED DEATHS
1975 - Continued

<u>No.</u>	<u>Date</u>	<u>Industry</u>	<u>Occupation</u>	<u>Age</u>	<u>Cause of Death</u>
50.	6-29-75	Special Trade Contr.	Laborer	15	Fall
The victim fell ten feet when he slipped off the scaffolding while he was moving sheets of insulation. He was injured on 6-26-75 and died on 6-29-75.					
51.	6-30-75	Nonmetal. Min. Exc. Fuels	Laborer	22	Suffocation
The victim was feeding cold storage bins at an asphalt plant with aggregate when the material below him collapsed causing him to fall in and be covered.					
52.	7- 1-75	Special Trade Contr.	Laborer	30	Suffocation
The employee was holding a stick for measuring the depth of a sewer line when the unshored 10 foot ditch caved in on him.					
53.	7- 1-75	Agricultural Prod.	Hired Man	26	Crushed
The tractor overturned on a steep hill while the worker was raking.					
54.	7- 2-75	Local Government	Operator	46	Crushed
The employee was backing a caterpillar tractor off a lowboy trailer. The bed of the trailer was tilted causing the tractor to slide off and turn on its side pinning the operator.					
55.	7- 5-75	Food and Kindred Prod.	Truck Operator	27	Electrocution
The victim was unloading milk from a tank truck when the electrical hookup shorted to the truck. He put his hand against the side of the truck while picking up a pail sitting on the wet ground underneath the truck and was electrocuted.					
56.	7-11-75	Local Government	Volunteer Fireman	76	Heart Attack
The victim was pulling a firehose when he suffered a heart attack.					

STATE OF IOWA
SUMMARY OF WORK RELATED DEATHS
1975 - Continued

<u>No.</u>	<u>Date</u>	<u>Industry</u>	<u>Occupation</u>	<u>Age</u>	<u>Cause of Death</u>
57.	7-18-75	Heavy Const. Contr.	Laborer	31	Crushed
The employee was working on the end of pipe in the ditch when the pipe stringing truck parked on a slope rolled backwards 30 to 40 feet. The truck struck the employee knocking him to the ground and the rear wheels of the truck rolled over him.					
58.	7-26-75	Railroad Transp.	Maintenance	24	Struck By
The employee was struck by the heavy jack handle while jacking up a truck. He was injured on 7-24-75 and died on 7-26-75 of severe head injuries.					
59.	7-28-75	Bldg. Mtrl. & Farm Equip.	Yard Man	47	Crushed
The worker was riding on a man lift and was caught between the man lift and the ceiling.					
60.	7-30-75	Bldg. Mtrl. & Farm Equip.	Laborer	19	Struck By
The victim was helping remove wires from a broken telephone pole. Part of the pole fell striking him on the side of the head and back. He was injured on 7-29-75 and died on 7-30-75.					
61.	8-2-75	Eating & Drinking Places	Asst. Manager	19	Vehicle Accident
The employee's motorcycle was struck by a pickup truck.					
62.	8-4-75	Local Government	Student Work Prog.	16	Drowning
The employee was on a summer youth recreation program; drowned while swimming.					
63.	8-6-75	Furniture & Fixtures	Laborer	23	Electrocution
The worker was installing a paint booth when the booth became charged and the worker apparently grounded it.					

STATE OF IOWA
SUMMARY OF WORK RELATED DEATHS
1975 - Continued

<u>No.</u>	<u>Date</u>	<u>Industry</u>	<u>Occupation</u>	<u>Age</u>	<u>Cause of Death</u>
64.	8- 7-75	Railroad Transp.	Laborer	50	Caught Under
The victim was trying to couple two railroad cars when a train car bumped the car he was riding on and he fell underneath the car. He was dragged "a long distance" before the car stopped.					
65.	8- 7-75	Heavy Const. Contr.	Checker	21	Struck By
The employee picked up a ticket at the spreader, had turned around and was walking away when a truck which was backing up struck him throwing him under the truck wheels.					
66.	8-14-75	Stone, Clay & Glass Prod.	Superintendent	40	Explosion
An employee on a cement transport barge was thrown into the river when the hatch cover on a pressurized tank exploded as he opened it.					
67.	8-15-75	Loc. & Intrurb. Pass. Trans.	Taxi Driver	33	Vehicle Accident
The worker died after being involved in a vehicle accident while driving a taxi.					
68.	8-20-75	Local Government	Custodian	63	Heart Attack
The employee was unloading and moving boxes when he suddenly collapsed and died.					
69.	8-27-75	Misc. Retail Stores	Laborer	58	Fall
The victim fell 12-15 feet from scaffolding striking his head on a cement patio. The victim suffered head injuries on 5-15-75 and died on 8-27-75.					
70.	9- 2-75	Food and Kindred Prod.	Maintenance	24	Struck By
The victim was operating a roto-rooter when a rod of 2½-inch steel flew out and pierced his brain. The employee was injured on 11-19-74 and died 9½ months later.					

STATE OF IOWA
SUMMARY OF WORK RELATED DEATHS
1975 - Continued

<u>No.</u>	<u>Date</u>	<u>Industry</u>	<u>Occupation</u>	<u>Age</u>	<u>Cause of Death</u>
71.	9- 5-75	Wholesale Trade	Asst. Manager	26	Vehicle Accident
The employee was driving the company pickup on a trip to pick up grain when his vehicle was struck head on by another vehicle whose driver had lost control.					
72.	9- 8-75	Communication	Stockroom Man	47	Vehicle Accident
The employee died of burns and suffocation from a fire caused by a vehicle collision.					
73.	9-12-75	Insurance Carriers	Sales Represent.	42	Vehicle Accident
The victim died when the car he was driving hit a guard rail, rolled and burned.					
74.	9-15-75	Heavy Const. Contr.	Dist. Oper.	18	Vehicle Accident
The employee was killed when the truck he was driving rolled off into a ditch.					
75.	9-16-75	Stone, Clay & Glass Prod.	General Labor	41	Suffocation
The worker had been assigned to observe dirt movement through a hopper but not to enter the hopper. The worker was later found deceased in a bin immersed in clay up to his chest.					
76.	9-17-75	Genl. Bldg. Contr.	Laborer	21	Suffocation
The employee was working on a vertical tower-type extractor. The employee went into the extractor at the lower level which was filled with hexane gas, gas from processing soy beans, causing him to suffocate.					
77.	9-17-75	Heavy Const. Contr.	Genl. Laborer	20	Vehicle Accident
The victim was driving to work on the uncompleted portion of I-35 in the driving lane of the south bound roadway when he collided with a motor grader parked in the same lane facing north.					

STATE OF IOWA
SUMMARY OF WORK RELATED DEATHS
1975 - Continued

<u>No.</u>	<u>Date</u>	<u>Industry</u>	<u>Occupation</u>	<u>Age</u>	<u>Cause of Death</u>
78.	9-23-75	Heavy Const. Contr.	Mechanic	68	Crushed
The employee was working on payloader with the front end bucket elevated when the bucket dropped crushing him.					
79.	9-23-75	Special Trade Contr.	Plumber	NR	Struck By
The victim was struck by the front door of the boiler when it exploded as he was trying to start it. The explosion was caused by an accumulation of gas in the fire box when the boiler purged.					
80.	9-29-75	Local Government	Volunteer Fireman	NR	Heart Attack
The worker was fighting a fire when he suffered a heart attack.					
81.	10- 8-75	Misc. Retail Store	Elevator Manager	55	Suffocation
The employee was checking out a buttermilk pit when he was overcome by fumes.					
82.	10-13-75	Special Trade Contr.	Iron Worker	21	Fall
The victim was getting material when he stepped around a tank, lost his balance and fell 12 feet into a hole landing on his head. This accident occurred on 10-10-75 and he died on 10-13-75.					
83.	10-15-75	Bit. Coal & Lignite Mining	Shuttle Car Oper.	20	Struck By
The employee was working in the mine interior, near the face area of one of the excavation shafts, when a large chunk of shale broke loose from the mine wall and struck him on the side of the head.					
84.	10-15-75	Misc. Retail Store	Tank Wagon Driver	31	Vehicle Accident
The employee died of massive head injuries sustained when he collided with a truck which pulled into the path of the truck he was driving.					
NR = Not Reported					

STATE OF IOWA
SUMMARY OF WORK RELATED DEATHS
1975 - Continued

<u>No.</u>	<u>Date</u>	<u>Industry</u>	<u>Occupation</u>	<u>Age</u>	<u>Cause of Death</u>
85.	10-18-75	Wholesale Trade	Plant Supt.	66	Fall
The worker was walking on a catwalk checking equipment when he fell 23 feet onto a concrete floor.					
86.	10-22-75	Railroad Transp.	Lineman	27	Fall
The victim fell 30 feet from the top of a utility pole as he was stringing new signal wire along the track. The victim had apparently tried to climb into a swing type open seat at the top of the pole.					
87.	10-23-75	Communication	Splicer	28	Electrocution
The crew was loading a pole onto a trailer using a derrick truck. The pole, connected to the boom of the truck with wire rope, was elevated and touching a 7,000 volt line causing the truck to become energized. The employee was electrocuted as he was hitching the trailer to the derrick truck.					
88.	10-25-75	Agricultural Prod.	Farm Employee	69	Caught In
The victim became entangled in the power take-off of the auger after he had finished unloading corn from a truck to a bin.					
89.	10-27-75	Agricultural Prod.	Tenant Operator	56	Struck By
The worker was butted and trampled by a bull when he attempted to put the bull into a farm lot separate from the heifers.					
90.	11- 4-75	Wholesale Trade	Labcrer	18	Heart Attack
The employee was scooping corn to level it off in a storage bin and was later found laying on the grain.					
91.	11- 9-75	Water Transportation	Deckhand	60	Explosion
The employee was working in the hole of the barge when an explosion occurred blowing him out of the hole about 50-60 feet away onto the deck of the barge.					

STATE OF IOWA
SUMMARY OF WORK RELATED DEATHS
1975 - Continued

<u>No.</u>	<u>Date</u>	<u>Industry</u>	<u>Occupation</u>	<u>Age</u>	<u>Cause of Death</u>
92.	11-12-75	Wholesale Trade	Field Engineer	37	Vehicle Accident
The worker was involved in a car accident during inclement weather as he was driving between job sites.					
93.	11-14-75	Lumber and Wood Prod.	Truck Driver	22	Caught In
The victim died of a broken neck as a result of his clothing getting caught in the power take-off when he attempted to unjoin the power take-off on the log truck.					
94.	11-18-75	Bldg. Mtrl. & Farm Equip.	Crew Foreman	37	Electrocution
The employee was on a ladder installing a foil type insulation and was electrocuted when the insulation came in contact with a power line.					
95.	11-20-75	Wholesale Trade	Asst. Grain Spvr.	25	Fall
The victim slipped, as he stepped onto a manlift, and fell 2 stories striking his head on the cement floor.					
96.	11-21-75	Wholesale Trade	Elevator Employee	20	Suffocation
The employee was sitting on corn preparing to shovel tank bottom of bin. The employee started to slide with the corn movement from the entrance hole of the tank and was pulled into the drawoff by the grain.					
97.	12- 1-75	Heavy Const. Contr.	Foreman	49	Heart Attack
The worker was talking to another employee when he collapsed and died of a heart attack.					
98.	12- 4-75	Nonmetal. Min. Exc. Fuels	Asphalt Super.	35	Crushed
The victim was killed when a drilling boom broke and fell on him.					

STATE OF IOWA
SUMMARY OF WORK RELATED DEATHS
1975 - Concluded

<u>No.</u>	<u>Date</u>	<u>Industry</u>	<u>Occupation</u>	<u>Age</u>	<u>Cause of Death</u>
99.	12- 4-75	Mach., Exc. Elec.	Assemblyman	58	Heart Attack

The employee was taken to a hospital where he died of a heart attack after he tripped and fell while walking around a machine.



STATE OF IOWA
SUMMARY OF WORK RELATED DEATHS
1976

<u>No.</u>	<u>Date</u>	<u>Industry</u>	<u>Occupation</u>	<u>Age</u>	<u>Cause of Death</u>
1.	1- 5-76	Local Government	Fire Chief	67	Heart Attack
The employee suffered a heart attack while fighting a fire.					
2.	1-10-76	State Government	Highway Main. Man	54	Heart Attack
The worker was driving a medium duty truck spreading abrasives on icy pavement when he suffered a heart attack.					
3.	1-14-76	Wholesale Trade-Durables	Salesman	39	Vehicle Accident
Employee was traveling between sales accounts when his car was involved in a collision with a semi-tractor.					
4.	1-15-76	Chemicals & Allied Prod.	Machinist-Driver	61	Vehicle Accident
The employee was driving a company car which was struck by another vehicle.					
5.	1-20-76	Special Trade Contr.	Painter	24	Fall
The victim was painting on an upper level when he fell 53 feet to the concrete floor.					
6.	1-23-76	Heavy Const. Contr.	Pipefitter	57	Heart Attack
The worker had climbed a ladder when he suffered a heart attack and collapsed.					
7.	2- 2-76	Local Government	Bus Mechanic	63	Vehicle Accident
The victim attempted to pass a snowplow and hit a bus head-on.					
8.	2- 5-76	Wholesale Trade-Durables	Mechanic	47	Heart Attack
The employee was filling rollers with oil when he suffered a heart attack.					

STATE OF IOWA
SUMMARY OF WORK RELATED DEATHS
1976 - Continued

<u>No.</u>	<u>Date</u>	<u>Industry</u>	<u>Occupation</u>	<u>Age</u>	<u>Cause of Death</u>
9.	2-13-76	Business Services	Service Manager	28	Fall
The victim was doing bird proofing work in a two-man bucket when the base of the boom gave way tossing both men out of the bucket onto the sidewalk below. The accident occurred on 2-9-76 and he died on 2-13-76.					
10.	2-20-76	Local Government	Patrol Operator	64	Heart Attack
The employee suffered a heart attack while enroute to a job site.					
11.	2-24-76	State Government	Store Manager	55	Heart Attack
The worker suffered a heart attack while at work.					
12.	3-15-76	Trucking & Warehousing	Truck Driver	42	Vehicle Accident
The victim lost control of his truck and the truck went down into a ditch. The victim apparently fell out of the truck and the wheels of the tractor ran over him.					
13.	3-23-76	Nonmetal. Min. Exc. Fuels	Driller Truck Driver	35	Struck By
The employee was operating an air drill when a pin in the boom broke and the boom fell on the victim.					
14.	3-26-76	Real Estate	Plumber	24	Vehicle Accident
15.	3-26-76	Real Estate	Carpenter's Helper	23	Vehicle Accident
Both the driver and the passenger died as a result of burns suffered when their vehicle struck a curb, overturned and caught on fire.					
16.	4- 6-76	Trucking & Warehousing	Driver	33	Vehicle Accident
The employee's truck went off the shoulder of the road and jackknifed causing the trailer to fall on top of the tractor.					

STATE OF IOWA
SUMMARY OF WORK RELATED DEATHS
1976 - Continued

<u>No.</u>	<u>Date</u>	<u>Industry</u>	<u>Occupation</u>	<u>Age</u>	<u>Cause of Death</u>
17.	4 -9-76	Special Trade Contr.	Mechanic's Helper	19	Crushed
The worker was crushed when the truck box fell as the worker was removing supports and tools from between the truck frame and the truck box.					
18.	4-10-76	Trucking & Warehousing	Truck Driver	33	Vehicle Accident
The employee was driving a tractor-trailer unit which struck another vehicle from behind.					
19.	4-12-76	Special Trade Contr.	Journeyman Ironwker.	25	Fall
The victim and another worker were laying grating on the floor system and had grabbed a piece of grating pulling it toward themselves. The grating they were pulling bumped the grating the victim was standing on causing him to fall off of the structure.					
20.	4-19-76	Heavy Const. Contr.	Truck Driver	51	Struck By
The employee tried to jump clear when the stripping scaffold he was standing on shifted and he was struck in the back of the head by a piece of metal pipe.					
21.	4-30-76	Nonmetal. Min. Exc. Fuels	Driller	59	Heart Attack
The victim was found dead after he complained of being tired and had gone to rest. The coroner attributed death to a heart attack.					
22.	5- 4-76	Local Government	Maintenance Man	23	Poisoning
The employee spent a day spraying weeds with weed killer, kerosene and water and was found dead the next day. An autopsy revealed intoxication with organic spray to be the cause of death.					
23.	5-10-76	Special Trade Contr.	Ironworker	61	Struck By
A steel bull hook popped off of a rail car and struck the victim as the rail car was being shifted by a crane.					

STATE OF IOWA
SUMMARY OF WORK RELATED DEATHS
1976 - Continued

<u>No.</u>	<u>Date</u>	<u>Industry</u>	<u>Occupation</u>	<u>Age</u>	<u>Cause of Death</u>
24.	5-12-76	Heavy Const. Contr.	Paving Finisher	61	Stroke
The employee suffered a stroke while finishing concrete.					
25.	5-18-76	Trucking & Warehousing	Leased Driver	32	Vehicle Accident
The employee died of burns when the tractor-trailer unit he was driving ran off the road, overturned and caught fire.					
26.	5-18-76	State Government	Maintenance Man	60	Struck By
The employee was crossing the highway, after pulling his truck onto the shoulder of the road and getting out, when he was struck on the head by the side mirror of a passing vehicle. He was hospitalized from the time of the injury on 3-24-76 until he died on 5-18-76.					
27.	5-18-76	Agricultural Prod.	Farmer	57	Suffocation
The victim was working on a pump when he slipped and fell into the septic tank.					
28.	5-20-76	Local Government	Firefighter	40	Drowning
29.	5-20-76	Local Government	Firefighter	33	Drowning
Two employees drowned during a rescue training program on the river when their boat went over the dam and capsized.					
30.	5-25-76	Wholesale Trade-Nondurables	Laborer	61	Fall
The worker fell 30 feet down an elevator shaft to a wood floor below.					
31.	5-30-76	Bldg. Mtrl. & Gard. Sply.	Truck Driver	53	Heart Attack
The employee was driving a truck on 5-24-76 when he suffered a heart attack. He died on 5-30-76.					

STATE OF IOWA
SUMMARY OF WORK RELATED DEATHS
1976 - Continued

<u>No.</u>	<u>Date</u>	<u>Industry</u>	<u>Occupation</u>	<u>Age</u>	<u>Cause of Death</u>
32.	6- 2-76	Trucking & Warehousing	Laborer	15	Caught In
The victim was caught in the mechanism of the garbage compactor when another employee started it.					
33.	6- 8-76	Food Stores	Assistant Manager	19	Gun Shot
The employee died after being shot during a robbery.					
34.	6- 9-76	Agricultural Prod.-Crops	Farm Labor	17	Crushed
The worker was driving a tractor on a county road when the tractor went into a ditch, rolled over on top of the worker and crushed his chest.					
35.	6-11-76	Local Government	Night Patrolman	22	Gun Shot
The victim was shot 3 times when he stopped a suspected lawbreaker.					
36.	6-17-76	Agricultural Prod.-Crops	Farm Hand	70	Crushed
The employee was mowing weeds when the tractor he was driving rolled over into a creek bed pinning him underneath.					
37.	6-19-76	Heavy Const. Contr.	Roller Operator	28	Crushed
The roller upset on the worker as he was rolling asphaltic concrete.					
38.	6-23-76	Transportation Services	Laborer	23	Electrocution
The employee had been setting up a portable lighting plant at the site of a train derailment. When the employee was found later, the portable plant was running and he had apparently been electrocuted.					
39.	6-23-76	Heavy Const. Contr.	Road Const. Laborer	22	Struck By
The employee was working with shoulder crew when he turned around to do another task and stepped into the side of a moving truck.					

STATE OF IOWA
SUMMARY OF WORK RELATED DEATHS
1976 - Continued

<u>No.</u>	<u>Date</u>	<u>Industry</u>	<u>Occupation</u>	<u>Age</u>	<u>Cause of Death</u>
40.	6-24-76	Local Government	Weed Mower	58	Crushed

The victim was mowing weeds along the road when one wheel of the tractor hit a culvert and the tractor rolled over on top of the victim.

41.	6-25-76	Heavy Const. Contr.	Pipefitter	61	Heart Attack
-----	---------	---------------------	------------	----	--------------

The employee died of a heart attack at the hospital where he was taken after he started sweating and felt faint while at work.

42.	6-28-76	Mach., Exc. Elec.	Laborer	72	Struck By
-----	---------	-------------------	---------	----	-----------

The employee died as a result of head injuries suffered when he was struck by a piece of metal.

43.	7- 2-76	Local Government	Asst.Supt.-Elec.	56	Electrocution
-----	---------	------------------	------------------	----	---------------

In the process of installing a new transformer, the employee came in contact with a 2,400 volt line.

44.	7- 5-76	Special Trade Contr.	Construction Supt.	56	Mesothelioma
-----	---------	----------------------	--------------------	----	--------------

The victim had worked with asbestos as an insulator and as a superintendent. The exposure to asbestos caused mesothelioma, a cancer peculiar to asbestos workers, which resulted in his death.

45.	7- 6-76	Local Government	Public Works Insp.	21	Suffocation
46.	7- 6-76	Local Government	Public Works Insp.	18	Suffocation

Both workers were overcome by gas as they inspected a sewer.

47.	7-11-76	Agricultural Prod.-Crops	Farm Manager	52	Suffocation
-----	---------	--------------------------	--------------	----	-------------

The employee was trying to wind up hose on a large reel on an irrigation traveler and had apparently reached through the spokes of the reel. When the reel began to turn rapidly the employee was pulled through the end of it and suffocated as the hose wound up around the reel.

STATE OF IOWA
SUMMARY OF WORK RELATED DEATHS
1976 - Continued

<u>No.</u>	<u>Date</u>	<u>Industry</u>	<u>Occupation</u>	<u>Age</u>	<u>Cause of Death</u>
48.	7-14-76	Agricultural Prod.-Crops	Farm Hand	18	Crushed
The victim was driving a tractor pulling a wagon of hay and was pinned under the tractor after it overturned in a ditch.					
49.	7-16-76	Local Government	Mechanic-Truck Dvr.	61	Crushed
The employee was hauling rock in the bucket of an endloader. The endloader fell on its side, after the wheel of the endloader hit a rock which had bounced out of the bucket, and the employee was crushed under the machine.					
50.	7-23-76	Amus. & Rec. Svcs.	Rodeo Clown	19	Gun Shot
The worker was killed when a blank shotgun shell malfunctioned during a clown routine. The shell was filled with paper wadding which was supposed to explode into confetti, but penetrated the victim's back instead.					
51.	7-25-76	Railroad Transportation	Engineer	27	Drowning
The employee drowned when the locomotive derailed causing the bridge to collapse and the locomotive to plunge into the river.					
52.	7-28-76	Genl. Bldg. Contr.	Laborer	21	Fall
53.	7-28-76	Genl. Bldg. Contr.	Foreman	26	Fall
54.	7-28-76	Genl. Bldg. Contr.	Laborer	19	Fall
All three workers were killed when they fell 125 feet from the top of a grain elevator when the scaffolding on which they were working collapsed.					
55.	8- 2-76	Genl. Bldg. Contr.	Laborer	27	Electrocution
The victim received an electric shock from a 110 volt drop cord while he was troweling cement. The victim had a history of heart ailments and the shock caused heart failure.					
56.	8- 5-76	Genl. Bldg. Contr.	Machine Operator	23	Crushed
The victim was unloading a crawler tractor off of a lowboy trailer which was at a slight angle and the deck wet. The tractor skidded and rolled off the side of the trailer overturning on the victim.					

STATE OF IOWA
SUMMARY OF WORK RELATED DEATHS
1976 - Continued

<u>No.</u>	<u>Date</u>	<u>Industry</u>	<u>Occupation</u>	<u>Age</u>	<u>Cause of Death</u>
57.	8- 8-76	Wholesale Trade-Nondurables	Assistant Manager	63	Heart Attack
The employee suffered a heart attack while at work.					
58.	8- 8-76	Transportation Equipment	Tester	24	Crushed
The worker was driving a stand-up lift truck and rounded a corner with too much speed causing the truck to tip over pinning his head between the over-head guard and the floor.					
59.	8- 9-76	Wholesale Trade-Nondurables	Truck Driver	51	Heart Attack
The victim was driving a truck when he suffered a heart attack.					
60.	8-13-76	Business Services	General Cleaning	74	Heart Attack
The victim was performing his normal work duties when he suffered a heart attack.					
61.	8-16-76	Fab. Metal Products	Shop Laborer	54	Heart Attack
The employee was carrying a 6 foot piece of steel channel up a flight of stairs. The employee was starting up the third flight of stairs when he suffered a heart attack and collapsed.					
62.	8-16-76	State Government	Mechanic	62	Heart Attack
The victim suffered a heart attack as he walked toward the time clock to punch in for work.					
63.	8-25-76	Chemicals & Allied Prod.	Plant Manager	39	Struck By
The worker was using an oxyacetylene torch to remove the end from a 55 gallon steel drum. The drum exploded striking the victim in the head.					
64.	8-26-76	Paper & Allied Prod.	Glue Cooker/Baler	59	Struck By
The employee was working on a baler when the machine malfunctioned causing the door to fly open striking the victim in the trunk area.					

STATE OF IOWA
SUMMARY OF WORK RELATED DEATHS
1976 - Continued

<u>No.</u>	<u>Date</u>	<u>Industry</u>	<u>Occupation</u>	<u>Age</u>	<u>Cause of Death</u>
65.	8-27-76	Genl. Bldg. Contr.	Foreman	27	Explosion
The victim was welding hooks on a liquid fertilizer tank when the tank exploded throwing the victim into the air. His body landed 125 feet away.					
66.	9- 4-76	Wholesale Trade-Durables	Service Manager	33	Crushed
The employee was returning a tractor, provided for a tractor pull, to the shop when the tractor overturned pinning him under it.					
67.	9- 4-76	Special Trade Contr.	Ironworker	21	Fall
The employee was working on a radio tower when he fell to his death.					
68.	9- 7-76	Stone, Clay & Glass Prod.	Mechanic	29	Electrocution
The victim was electrocuted when the crane he was touching came in contact with a high voltage power line. (See No. 76.)					
69.	9- 7-76	Local Government	Fireman	29	Vehicle Accident
The worker was driving a fire truck when the steering mechanism malfunctioned and the truck left the roadway and rolled over in a ditch.					
70.	9-10-76	Stone, Clay & Glass Prod.	Tractor Operator	61	Crushed
The victim was operating a tractor with a front endloader and was dumping gravel into a hopper. He reached under an arm on the loader to use a conveyor belt control switch and accidentally touched the loader arm control lever. The bucket on the loader and the arm dropped on him pinning him between the bucket arm and the side of the tractor.					
71.	9-11-76	Food & Kindred Prod.	Maintenance Spvr.	55	Stroke
On 8-9-76, the employee was found unconscious in a vat where he had been shoveling sand and was taken to a hospital. Surgery was performed but the employee remained unconscious until he died on 9-11-76. It was believed that he had suffered a stroke.					

STATE OF IOWA
SUMMARY OF WORK RELATED DEATHS
1976 - Continued

<u>No.</u>	<u>Date</u>	<u>Industry</u>	<u>Occupation</u>	<u>Age</u>	<u>Cause of Death</u>
72.	9-11-76	Health Services	Ophthalmologist	65	Vehicle Accident
The worker's vehicle was struck head-on by another vehicle which was traveling the wrong way on the interstate.					
73.	9-11-76	Genl. Bldg. Contr.	Skilled Laborer	47	Fall
The victim was on a scaffold inside of a manlift shaft when he fell 75 feet down the shaft.					
74.	9-13-76	State Government	Engineering Aid II	60	Struck By
The employee was struck, knocked down and run over by a rock truck which was backing up.					
75.	9-14-76	Bldg. Mtls. & Garden Supplies	Door Installer	67	Fall
The employee was installing a door operator when he fell from a ladder striking his head.					
76.	9-16-76	Stone, Clay & Glass Prod.	Laborer	19	Burns
The victim suffered severe burns when he touched a crane which had come in contact with a high voltage power line. The accident occurred on 9-7-76 and he died on 9-16-76. (A co-worker was electrocuted at the time of the accident, see No. 68.)					
77.	9-16-76	Local Government	Road Maintenance	59	Crushed
The worker was found pinned between the frame of the dump box and the frame of the truck after he had unloaded a truck full of fill dirt.					
78.	9-24-76	Wholesale Trade-Nondurables	Field Man	24	Vehicle Accident
The employee's vehicle was struck broadside by a gravel truck.					
79.	9-24-76	Local Government	Supt. Bldg. & Grds.	59	Heart Attack
The employee suffered a fatal heart attack while in a pickup truck waiting for a game to end so that he could lock up.					

STATE OF IOWA
SUMMARY OF WORK RELATED DEATHS
1976 - Continued

<u>No.</u>	<u>Date</u>	<u>Industry</u>	<u>Occupation</u>	<u>Age</u>	<u>Cause of Death</u>
80.	9-27-76	Special Trade Contr.	Service Tech.	58	Heart Attack
The worker suffered a heart attack while at work.					
81.	9-28-76	Auto. Dealers & Svc. Stat.	L.P. Salesman	58	Heart Attack
The employee was installing a gas line on 9-27-76 when he suffered a heart attack. He died on 9-28-76.					
82.	9-30-76	Agricultural Prod.-Livestock	Farm Hand	78	Fall
On 9-24-76 the victim was climbing a ladder to the haymow when the ladder slipped and he fell. He died on 9-30-76.					
83.	10- 2-76	Trucking & Warehousing	Mechanic	34	Vehicle Accident
The victim was riding in a semi-tractor that ran off the road and into a ditch.					
84.	10-11-76	Wholesale Trade-Nondurables	Tank Wagon Salesman	52	Heart Attack
The employee suffered a heart attack as he was filling a customer's gas barrel.					
85.	10-11-76	Electric, Gas & San. Svcs.	Trck.Driv.-Grnd.Man	33	Electrocution
The worker was removing a drill from the bed of a truck when the boom of the digger-derrick truck made contact with an energized electric line. The truck became energized and the worker was electrocuted when he touched the truck.					
86.	10-11-76	Agricultural Prod.-Crops	Hired Help	23	Crushed
The employee was riding on the drawbar of a tractor when he fell off and was run over by the wagon.					
87.	10-13-76	Chemicals & Allied Prod.	Mixing Plant	59	Heart Attack
The employee suffered a heart attack as he was operating a tractor.					

STATE OF IOWA
SUMMARY OF WORK RELATED DEATHS
1976 - Continued

<u>No.</u>	<u>Date</u>	<u>Industry</u>	<u>Occupation</u>	<u>Age</u>	<u>Cause of Death</u>
88.	10-16-76	Wholesale Trade-Nondurables	Laborer	NR	Heart Attack
The employee was at work and he suffered a heart attack.					
89.	10-20-76	Wholesale Trade-Nondurables	General Labor	19	Electrocution
The victim was helping unload a bulk feed truck when the truck's auger came in contact with an electric line.					
90.	10-28-76	Educational Services	Hvy.Equip.Mech.Inst.	57	Heart Attack
The employee felt ill as he was lying on the ground adjusting the brakes of a machine. The employee got up and walked about 200 yards to an office where he lay down on a couch and died 15 minutes later.					
91.	11- 5-76	Auto Dealers & Svc. Stat.	Parts Manager	62	Vehicle Accident
The employee was returning from town where he had picked up parts when his vehicle was struck head-on by another vehicle.					
92.	11-11-76	Agricultural Prod.-Crops	Farm Employee	44	Vehicle Accident
The worker was driving a tractor which was struck by a train at a railroad crossing.					
93.	11-16-76	Mach., Exc. Elec.	Assembler	41	Struck By
The victim was found dead after his coffee break. An autopsy indicated that he had been struck on the head and had died of a skull fracture. The origin of the blow was not determined.					
94.	11-18-76	Printing & Publishing	Bindery Worker	72	Heart Attack
The employee died an hour after she had fainted in the restroom.					
95.	11-29-76	Local Government	Head Custodian	63	Heart Attack
The employee died of a heart attack after he had felt burning chest pains while sweeping.					

NR = Not Reported

STATE OF IOWA
SUMMARY OF WORK RELATED DEATHS
1976 - Continued

<u>No.</u>	<u>Date</u>	<u>Industry</u>	<u>Occupation</u>	<u>Age</u>	<u>Cause of Death</u>
96.	11-30-76	Stone, Clay & Glass Prod.	Truck Driver	43	Suffocation
The victim was overcome by smoke after he barricaded himself in a cubby hole because of a fire on the company premises.					
97.	11-30-76	Genl. Bldg. Contr.	Crane Operator	43	Electrocution
The employee was electrocuted when electricity from a power line arced to the crane he was operating.					
98.	12- 2-76	Amuse. & Rec. Svcs.	Collector	32	Vehicle Accident
The worker was involved in a vehicle accident during the course of her employment.					
99.	12- 2-76	Eating & Drinking Places	Assistant Mgr.	45	Heart Attack
The employee suffered a heart attack while working.					
100.	12- 5-76	Stone, Clay & Glass Prod.	Mechanic	45	Heart Attack
The employee had been working alone and later was found dead of a heart attack by other employees.					
101.	12- 9-76	Auto. Dealers & Svc. Stat.	Attendant	59	Heart Attack
After mounting tires, the employee walked outside, collapsed and died of a heart attack.					
102.	12- 9-76	Local Government	Patrolman	29	Vehicle Accident
The employee was chasing a suspect car. The suspect car caused a semi-trailer to go out of control and the patrol car struck the semi.					
103.	12-10-76	State Government	Spec. Ed. Consul.	34	Vehicle Accident
The victim was injured 12-8-76 in a vehicle accident while enroute to a teacher's meeting. He died 12-10-76 of injuries suffered in the accident.					

STATE OF IOWA
SUMMARY OF WORK RELATED DEATHS
1976 - Concluded

<u>No.</u>	<u>Date</u>	<u>Industry</u>	<u>Occupation</u>	<u>Age</u>	<u>Cause of Death</u>
104.	12-10-76	Genl. Bldg. Contr.	Truck Driver	56	Heart Attack
The victim was helping two other employees load wire onto a truck. The other two turned around to hand the victim a reel of wire and he had collapsed from a heart attack.					
105.	12-26-76	Auto. Repair, Svcs. & Gar.	Truck Driver	42	Vehicle Accident
The truck driven by the victim went off the road and burned.					
106.	12-27-76	Special Trade Contr.	Driller's Helper	27	Caught In
The employee was removing drill cuttings from around the hole when he became entangled in rotating drill augers. His body made several revolutions before the rig could be taken out of gear. The accident occurred 12-22-76 and the victim died 12-27-76.					



Section I
 1975-76
 OCCUPATIONAL SAFETY AND HEALTH ADMINISTRATION
 STATE DEPARTMENT - PUBLIC HEALTH SERVICE

SECTION III

OCCUPATIONAL SAFETY AND HEALTH

Inspection Activity

Appeals

Safety Education/Consultation

TO THE DIRECTOR, BUREAU OF PLANT INDUSTRY, U. S. DEPARTMENT OF AGRICULTURE, WASHINGTON, D. C.

FROM THE DIRECTOR, BUREAU OF PLANT INDUSTRY, U. S. DEPARTMENT OF AGRICULTURE, WASHINGTON, D. C.

SUBJECT: [Illegible]

REFERENCE: [Illegible]

REMARKS: [Illegible]

[Illegible]

Table 1
STATE OF IOWA
OCCUPATIONAL SAFETY AND HEALTH ADMINISTRATION
STATE PERFORMANCE - FISCAL YEAR 1976^{1/}

	NUMBER	PERCENT OR AVERAGE
Total Inspections Conducted	3,657	
Safety Inspections	3,401	93.0%
Health Inspections	256	7.0%
Accident Inspections	96	2.6%
Complaint Inspections	177	4.8%
General Schedule Inspections	1,982	54.2%
Follow-up Inspections	1,402	38.3%
Contested	259	7.1%
Inspections in Compliance (Excluding Follow-up)	277	12.3%
Total Employees Covered by Inspections	252,931	Avg. = 69/Inspection
Employees Covered by Safety Inspections	218,492	Avg. = 64/Inspection
Employees Covered by Health Inspections	34,439	Avg. = 135/Inspection
Total Violations	9,909	
Serious Violations	119	1.2%
Non-Serious Violations	9,790	98.8%
Non-Serious Violations with Penalty	2,466	25.2%
Citable Hazards Identified	20,313	
Citable Hazards per 100 Employees		8
Total Penalties Proposed	\$231,601	
Serious Penalties Proposed	\$ 80,106	Avg. = \$673/Violation
Non-Serious Penalties Proposed	\$151,495	Avg. = \$ 15/Violation
Avg. Penalty per Non-Serious Violation with a Penalty Proposed		\$61
Consultation Visits	21	

^{1/} July 1, 1975 through June 30, 1976.

Table 2
STATE OF IOWA
OCCUPATIONAL SAFETY AND HEALTH ADMINISTRATION
STATE PERFORMANCE - FISCAL YEAR 1977^{1/}

	NUMBER	PERCENT OR AVERAGE
Total Inspections Conducted	2,895	
Safety Inspections	2,695	93.1%
Health Inspections	200	6.9%
Accident Inspections	58	2.0%
Complaint Inspections	265	9.2%
General Schedule Inspections	1,696	58.6%
Follow-up Inspections	876	30.2%
Contested	213	7.4%
Inspections in Compliance (Excluding Follow-up)	270	9.3%
Total Employees Covered by Inspections	164,240	Avg. = 57/Inspection
Employees Covered by Safety Inspections	148,234	Avg. = 55/Inspection
Employees Covered by Health Inspections	16,006	Avg. = 80/Inspection
Total Violations	8,756	
Serious Violations ^{2/}	307	3.5%
Non-Serious Violations	8,449	96.5%
Non-Serious Violations with Penalty ^{3/}	1,075	12.7%
Citable Hazards Identified	17,149	
Citable Hazards per 100 Employees		10
Total Penalties Proposed	\$193,431	
Serious Penalties Proposed ^{2/}	\$ 98,486	Avg. = \$321/Violation
Non-Serious Penalties Proposed ^{3/}	85,945	Avg. = \$ 10/Violation
Avg. Penalty per Non-Serious Violation with a Penalty Proposed		\$80
Consultation Visits	42	

^{1/} July 1, 1976, through June 30, 1977.

^{2/} A changed interpretation of what constitutes a "serious" violation became effective on May 1, 1977, resulting in a greater number of violations being considered serious after that date.

^{3/} Pursuant to the provisions of the Department of Labor's appropriations bill, as of October 1, 1976, penalties for non-serious violations can not be proposed unless a total of 10 or more violations are identified during an inspection.

Table 3
STATE OF IOWA
NUMBER OF APPEALS AND
APPEAL RATE UNDER THE
IOWA OCCUPATIONAL SAFETY AND HEALTH ACT
1975-1976

Month	1975		1976	
	Number of Appeals ^{1/}	Appeal Rate ^{2/}	Number of Appeals ^{1/}	Appeal Rate ^{2/}
January	12	4.4%	29	8.5%
February	13	6.1%	21	7.6%
March	17	5.7%	25	8.1%
April	18	7.9%	22	10.0%
May	18	5.1%	20	7.9%
June	18	6.2%	24	9.3%
July	14	4.0%	19	7.7%
August	17	5.6%	31	8.8%
September	23	6.9%	20	7.5%
October	21	5.3%	16	5.7%
November	20	6.9%	13	6.5%
December	<u>24</u>	7.3%	<u>15</u>	7.7%
Total	215		255	
Monthly Average	17.9	6.0	21.3	7.9

^{1/} Appeals of safety and health citations or of penalty amounts proposed, or both.

^{2/} The ratio of the number of appeals filed to the number of inspections conducted each month. Some distortion may exist since appeals may be filed in a month subsequent to when the particular inspection was conducted.

Table 4
STATE OF IOWA
ACTIVITIES CONDUCTED BY THE
SAFETY EDUCATION/CONSULTATION DIVISION
CALENDAR YEARS 1975-1976

Activity	1975 ^{1/}	1976
Safety films distributed ^{2/}	26	62
Training and Educational Modules distributed ^{3/}	17	18
Safety slide sets distributed	22	13
Educational cassette tapes distributed	0	12
Educational seminars or speeches given	31	53
Number in attendance	1,603	3,281
Safety school sessions held	3	12
Students in attendance	47	372
Safety Consultations conducted on job sites ^{4/}	7	35

^{1/} July 1 through December 31 only; data for the first six months are not available. Legislation authorizing consultations became effective July 1, 1975.

^{2/} For a complete listing of films currently available and a brief description of each, contact the Iowa Bureau of Labor.

^{3/} See appendix III for a listing of the modules available.

^{4/} The On-site Consultation Service is free of charge. At the request of an employer, a qualified consultant will visit the establishment, check for safety and health hazards, and suggest ways to eliminate any danger. Applicable IOSH standards will also be explained. The consultant is not an inspector; he cannot issue a citation nor levy a fine. For more information, contact the Iowa Bureau of Labor.

SECTION IV

WAGE PAYMENT AND WORKPLACE STANDARDS

Wage Collection

Child Labor

Private Employment Agencies

UNITED STATES DEPARTMENT OF AGRICULTURE
BUREAU OF PLANT INDUSTRY
WASHINGTON, D. C.

Description of Plant	Quantity	Value
Cotton	100	100.00
Wool	50	50.00
Hemp	25	25.00
Flax	10	10.00
Linen	5	5.00
Silk	1	1.00
Cattle	1	1.00
Horse	1	1.00
Sheep	1	1.00
Pigs	1	1.00
Chickens	1	1.00
Ducks	1	1.00
Geese	1	1.00
Goats	1	1.00
Rabbits	1	1.00
Bees	1	1.00
Ants	1	1.00
Termites	1	1.00
Moths	1	1.00

Table 1
STATE OF IOWA
WAGE COLLECTION CASES INITIATED
ON BEHALF OF CLIENTS
FISCAL YEAR 1976

Activity	July 1, 1975 - June 30, 1976	
	Number of Claims	Amount Claimed
Information Requests ^{1/}	832	
Invalid Claims ^{2/}	36	
Wage Claims Received & Docketed ^{3/}	507	\$162,880.57
Claims Denied ^{4/}	100	35,287.04
Uncollectible ^{5/}	45	21,524.92
Claims Settled Before Petition ^{6/}	170	25,380.02
Claims Settled After Petition ^{7/}	12	3,972.19
Court Actions		
Petitions Filed ^{8/}	89	26,979.32
Dismissals ^{9/}	8	740.86
Judgements ^{10/}	45	11,445.08
Satisfied ^{11/}	13	3,048.43
Unsatisfied ^{12/}	2	1,204.00
Total Collections ^{13/}	195	32,400.63
Active Cases ^{14/}	157	71,723.11

- ^{1/} Information Requests - Number of wage complaint forms given to potential complainants.
- ^{2/} Invalid Claims - Those complaints that are deficient on the face of the form.
- ^{3/} Wage Claims Received and Docketed - Complaints that appear to be valid. Therefore, an attempt to contact the employer is made to elicit a statement of the employer's position.
- ^{4/} Claims Denied - Encompasses all reasons for denying a complaint, except a failure to locate the employer, employer insolvency, or a dismissal of a suit.

STATE OF IOWA
WAGE COLLECTION CASES INITIATED
ON BEHALF OF CLIENTS
FISCAL YEAR 1976

Footnotes continued

- 5/ Uncollectible - Claims that are denied because of our inability to locate the employer or because of the insolvency of the employer.
- 6/ Claims Settled Before Petition - All complaints upon which payment is received prior to filing suit.
- 7/ Claims Settled After Petition - All complaints upon which payment is received subsequent to filing suit.
- 8/ Petitions Filed - Number of lawsuits filed.
- 9/ Dismissals - Lawsuits dismissed after hearing by the court.
- 10/ Judgements - Lawsuits won by default or after hearing.
- 11/ Satisfied - Judgements that are collected.
- 12/ Unsatisfied - Judgements that are not collected.
- 13/ Total collections represent all cases for which monies have been collected on behalf of the complainant.
- 14/ Cases unresolved as of June 30, 1976.

Note: Data for FY 75 are not available since the Iowa Wage Payment Collection Act became effective July 1, 1975.

Table 2
STATE OF IOWA
NUMBER OF CERTIFICATES OF AGE,
WORK PERMITS, AND STREET TRADES PERMITS
BY MONTH
1975

Month	Certificates of Age ^{1/}	Work Permits ^{2/}	Street Trades Permits ^{3/4/}	Total Permits & Certificates
	1975	1975	1975	1975
January	183	131	356	670
February	129	130	312	571
March	297	244	251	792
April	366	292	271	929
May	556	595	255	1,406
June	1,090	1,133	458	2,681
July	341	538	403	1,282
August	373	476	465	1,314
September	621	585	251	1,457
October	308	284	480	1,072
November	105	151	228	484
December	94	119	324	537
Total	4,463	4,678	4,054	13,195

^{1/} Ages 16 and above.

^{2/} Ages 14 and 15.

^{3/} Ages 10 to 16.

^{4/} Newscarriers.

Table 3
STATE OF IOWA
NUMBER OF CERTIFICATES OF AGE,
WORK PERMITS, AND STREET TRADES PERMITS
BY MONTH
1976

Month	Certificates of Age ^{1/}	Work Permits ^{2/}	Street Trades Permits ^{3/4/}	Total Permits & Certificates
	1976	1976	1976	1976
January	176	186	311	673
February	152	198	259	609
March	265	176	206	206
April	288	315	269	872
May	621	288	559	1,568
June	1,417	2,272	406	4,095
July	491	585	190	1,266
August	364	406	380	1,150
September	686	338	409	1,433
October	355	290	363	1,008
November	200	172	244	616
December	220	184	231	635
Total	5,235	5,410	3,827	14,131

^{1/} Age 16 and above.

^{2/} Ages 14 and 15.

^{3/} Ages 10 to 16.

^{4/} Newscarriers.

Table 4
STATE OF IOWA
REPORT OF LICENSES ISSUED
AND FEES COLLECTED
PRIVATE EMPLOYMENT AGENCIES
FISCAL YEARS 1975-1976^{1/}

	FY 1975	FY 1976	Total 1975 & 1976
Number of licenses issued...	61	60	121
License fees collected ^{2/}	\$3,050.00	\$3,000.00	\$6,050.00

^{1/} July 1, 1974, through June 30, 1975, and July 1, 1975, through June 30, 1976.

^{2/} Annual license fee is \$50.00

SECTION V

PUBLIC PROTECTION

Boiler Inspection

Amusement Park/Ride Inspection

Elevator Inspection

Table 1
STATE OF IOWA
REPORT OF BOILER INSPECTIONS
AND FEES COLLECTED
STATE AND INSURED BOILERS
FISCAL YEARS 1975-1976^{1/}

	FY 1975	FY 1976	Total FY 1975 & 1976
INSPECTIONS ^{2/}			
State.....	2,159	2,282	4,441
Insured.....	9,545	9,509	19,054
Total.....	11,704	11,791	23,495
FEES COLLECTED ^{3/}			
State.....	\$22,426.00	\$24,482.00	\$ 46,908.00
Insured.....	\$19,252.00	\$44,550.00	\$ 63,802.00
Total.....	\$41,678.00	\$69,032.00	\$110,710.00

^{1/} July 1, 1974 through June 30, 1975 and July 1, 1975 through June 30, 1976.

^{2/} State inspections are made by the State Boiler Inspector and his deputies from the Bureau of Labor. Insured inspections are made by insurance company inspectors deputized by the Bureau of Labor.

^{3/} During Fiscal Year 1975, a fee of \$2.00 was collected by the Bureau of Labor for the issuance of a certificate to insurance inspected equipment. Beginning July 1, 1975, this fee was increased to \$5.00. Rates of charges for State inspected equipment are determined under Chapter 89.7, Code of Iowa.

The fees shown include amounts for travel and subsistence charged whenever special inspections are requested.

Table 2
STATE OF IOWA
REPORT OF AMUSEMENT PARK/RIDE
PERMITS ISSUED, INSPECTIONS
AND FEES COLLECTED
CALENDAR YEARS 1975-1976

	1975	1976	TOTAL 1975 & 1976
Number of Permits to Operate Issued	81	93	174
<u>INSPECTIONS</u>			
Electrical	853	859	1,712
Mechanical-Electrical	549	572	1,071
Total	1,402	1,431	2,833
<u>FEES COLLECTED</u>			
Permit Fees ^{1/}	\$ 620	\$ 980	\$ 1,600
Inspection Fees ^{1/}	29,770	34,355	\$52,925
Total	30,390	35,335	\$54,525
Mechanical Failures Reported	8	2	10
Personal Injuries Reported	8	41	49

^{1/} The following fees were charged from January 1 to July 1, 1975: Permit Fee, \$5.00; Electrical Inspection Fee, \$10.00; and Mechanical-Electrical Inspection Fee, \$35.00. As a result of a change in the legislation, fees charged after July 1 were: Permit Fee, \$10.00; Electrical Inspection Fee, \$15.00; and Mechanical-Electrical Inspection Fee, \$40.00.

Table 3
STATE OF IOWA
REPORT OF INVOICES ISSUED,
ELEVATOR FEES CHARGED, AND
NUMBER OF CERTIFICATES ISSUED
CALENDAR YEAR 1976

INVOICES

Ownership of Installation	Number of Invoices Issued ^{1/} for:		
	Annual Inspections ^{2/}	Re- Inspections ^{3/}	Total
Private	740	441	1,181
State	338	96	434
City or County	54	50	104
Federal	<u>6</u>	<u>1</u>	<u>7</u>
TOTAL	1,138	588	1,726

- ^{1/} Each invoice represents inspection fees charged for one elevator, escalator, moving walk or dumbwaiter.
- ^{2/} The initial inspection conducted of existing elevators, escalators, moving walks or dumbwaiters.
- ^{3/} Reinspection is required to followup on deficiencies discovered during an original inspection.

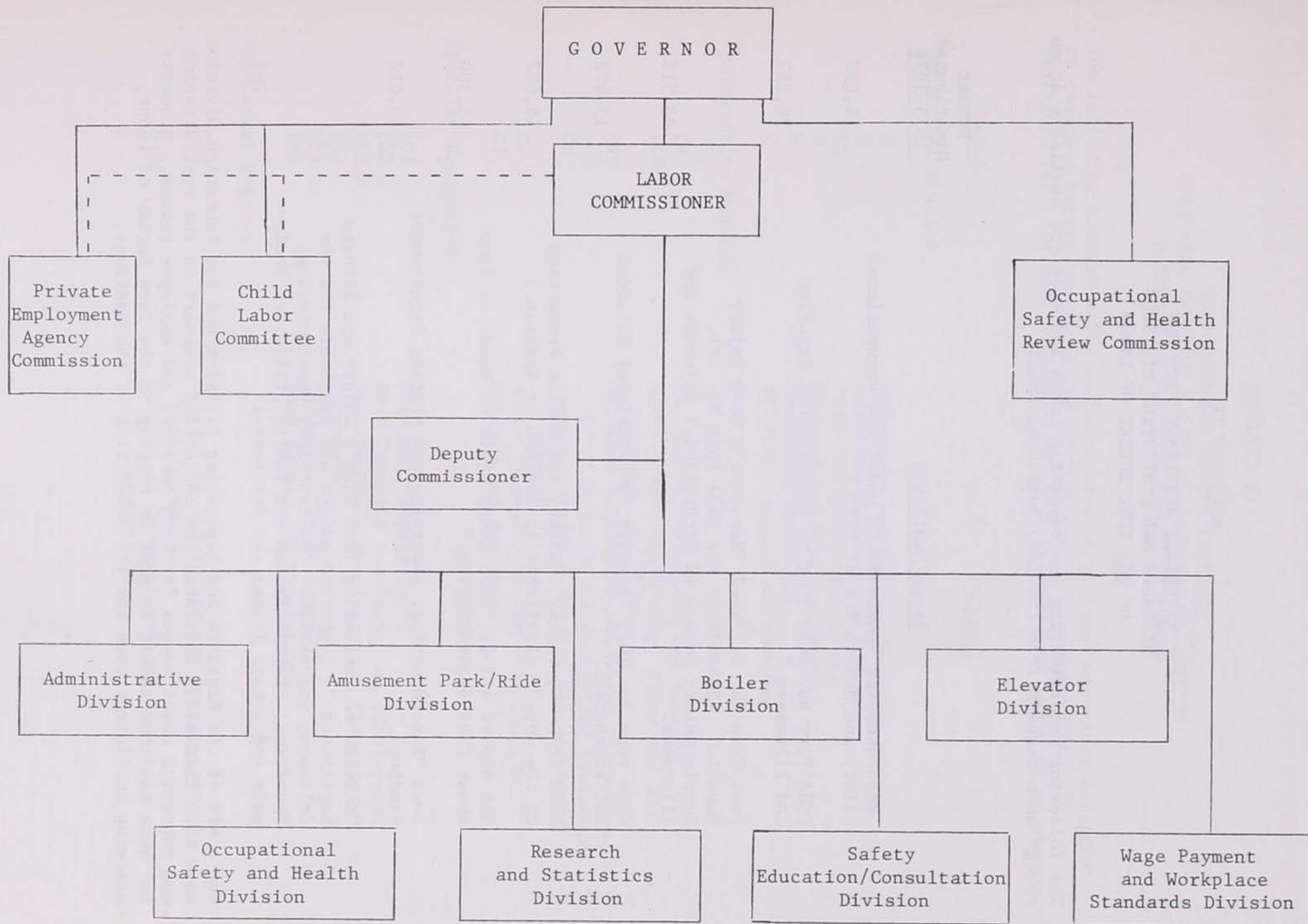
FEES

Type	Amount
Inspection Fees	\$12,885.00
Installation/Alteration Permit Fees	<u>5,903.74</u>
TOTAL	\$18,788.74

There were 678 facilities issued a Certificate of Permission to Operate in 1976.

Note: Data for 1975 are not available.

APPENDIXES



APPENDIX II

MATERIALS AVAILABLE FROM THE RESEARCH AND STATISTICS DIVISION OF THE IOWA BUREAU OF LABOR

The following recordkeeping and reporting forms and aids are available at no charge upon request from the Iowa Bureau of Labor.

<u>Items Available</u>	<u>Number Distributed 1975-1976</u>
"Recordkeeping Requirements under the Occupational Safety and Health Act of 1970."	11,087
OSHA Form No. 100, "Log of Occupational Injuries and Illnesses."	20,287
Iowa Form No. L-1/WC-1 "Employer's Work Injury Report." (Substitute for OSHA Form No. 101, Supplementary Record of Occupational Injuries and Illnesses.)	193,512
OSHA Form No. 102, "Summary, Occupational Injuries and Illnesses."	15,972
IOSH Form 30, Poster, "Safety and Health Protection on the Job." (Available in English or Spanish.)	18,667
BLS Report 412-2, "What Every Employer Needs to Know about OSHA Recordkeeping."	2,300
Iowa "Recordkeeping, Reporting and Posting Requirement Handbook."	3,012
"A Guide to Evaluating Your Firm's Injury and Illness Experience." (Separate guides are available for the following industries: Construction; Manufacturing; Foundries; Transportation and Public Utilities, Wholesale and Retail Trade; and Services.)	765

The staff of the Research and Statistics Division and the Education Division have made themselves available for conducting seminars on the recordkeeping and reporting requirements for both employer and employee groups. Requests for such sessions should be made in writing to the Iowa Bureau of Labor, allowing sufficient time for the scheduling of the meetings.

APPENDIX III

INSTRUCTIONAL MODULE PACKAGES AVAILABLE FROM THE SAFETY EDUCATION/CONSULTATION DIVISION OF THE IOWA BUREAU OF LABOR

The following comprehensive packages of instructional materials designed to create a better understanding of OSHA and IOSHA requirements are available for loan upon request from the Iowa Bureau of Labor at no charge.

<u>Module</u>	<u>Subject</u>
Industrial Modules	
O	Machinery and Machine Guarding
N	Material Handling and Storage
EL	Fire Protection and Egress
D	Walking and Working Surfaces
H	Hazardous Materials
Q	Welding, Cutting and Brazing
Construction Modules	
CP	Excavation, Trenching and Shoring
CLM	Ladders and Scaffolding, Floor and Wall Openings, and Stairways
CWO	Rollover Protection, Overhead Protection, Motor Vehicles and Mechanized Equipment
CN	Cranes, Derricks, Hoists, Elevators and Conveyors
CV	Power Transmission and Distribution
CJ	Welding and Cutting
Specific Occupations	
101	Equipment Repair Shops
102.A	Meat Products Manufacturing (Employees)
102.B	Meat Products Manufacturing (Employers)
103	Carpentry
103.A	Carpentry (Short Course)
105	Road Repair and Maintenance
Industrial Hygiene	
G-0	Control of Industrial and Occupational Health Hazards
G-93	Control of Occupational and Industrial Air Contaminants

INSTRUCTIONAL MODULE PACKAGES
AVAILABLE FROM THE SAFETY EDUCATION/CONSULTATION
DIVISION OF THE IOWA BUREAU OF LABOR

Industrial Hygiene continued

Subject

G-94	Industrial Ventilation
G-95	Occupational Noise Exposure
G-96/C-53	Ionizing Radiation
G-I/E	Personal Protective Equipment
G-Q /J	Health Practices for Welding, Cutting and Brazing
G-05	Brucellosis - Meat Packing Industry



STATE LIBRARY OF IOWA



3 1723 02057 4489

