

# Lenox, Iowa



Source: Esri, DigitalGlobe, GeoEye, Earthstar Geographics, CNES/Airbus DS, USDA, USGS, AEX, Getmapping, Aerogrid, IGN, IGP, swisstopo, and the GIS User Community

# Table of Contents

<b>Executive Summary .....</b>	<b>3</b>
Overview .....	3
Inventory and Results .....	3
Recommendations .....	3
<b>Introduction.....</b>	<b>4</b>
<b>Inventory ____.....</b>	<b>4</b>
<b>Inventory_Results .....</b>	<b>4</b>
<i>Annual Benefits</i> .....	5
Annual Energy Benefits .....	5
Annual Stormwater Benefits .....	5
Annual Air Quality Benefits .....	5
Annual Carbon Benefits .....	5
Annual Aesthetics Benefits .....	5
Financial Summary of all Benefits .....	5
<i>Forest Structure</i> .....	5
Species Distribution .....	5
Age Class.....	5
Condition: Wood and Foliage .....	6
Management Needs .....	6
Canopy Cover.....	6
Land Use and Location.....	6
<b>Recommendations .....</b>	<b>7</b>
Risk Management.....	7
Pruning Cycle.....	7
Planting .....	7
Continual Monitoring .....	8
Six Year Maintenance Plan .....	8
<b>Emerald Ash Borer .....</b>	<b>9</b>
Ash Tree Removal.....	9
EAB Quarantines.....	9
Wood Disposal .....	9
Canopy Replacement.....	9
Postponed Work .....	10
Monitoring.....	10
Private Ash Trees .....	10
<b>Budget ____ .....</b>	<b>10</b>
<b>Works Cited.....</b>	<b>11</b>
<b>Appendix B: ArcGIS Mapping .....</b>	<b>Error! Bookmark not defined.</b>
<b>Appendix C: Lenox Tree Ordinances .....</b>	<b>12</b>

# Executive Summary

---

## Overview

This plan was developed to assist the City of Lenox with managing its urban forest, including budgeting and future planning. Trees can provide a multitude of benefits to the community, and sound management allows a community to best take advantage of these benefits. Management is especially important considering the serious threats posed by forest pests such as the emerald ash borer (EAB). EAB is an invasive insect imported from Eastern Asia on wood shipping crates that kills all species of ash trees (this does not include mountain ash). There is a strong possibility that 24% of Lenox's city owned trees (ash) will die once EAB becomes established in the community, unless preventative treatment is used. With proper planning and management, the costs of removing dead and dying trees can be extended over years, mitigating public safety issues.

## Inventory and Results

In 2015, a tree inventory was conducted using Global Positioning System (GPS) data collectors. The inventory was a complete inventory of street and park trees. Below are some key findings of the 286 trees inventoried.

- Lenox's trees provide \$56,151.00 of benefits annually, an average of \$197.02 a tree
- There are 32 species of trees
- The top three genera are: Maple 50.2%, Ash 13.3%, and Oak at 12.3%
- 1 tree is recommended for removal

## Recommendations

The core recommendations are detailed in the Recommendations Section. The Emerald Ash Borer Plan includes management recommendations as well. Below are some key recommendations.

- Plant a diverse mix of trees that do not include: ash, maple, cottonwood, poplar, box elder, Chinese elm, evergreen, willow or black walnut
- Check ash trees with a visual survey yearly

## Introduction

---

This plan was developed to assist Lenox with the management, budgeting and future planning of their urban forest. Across the state, forestry budgets continue to decrease with more and more of that money spent on tree removal. With the anticipated arrival of Emerald Ash Borer (EAB), an invasive pest that kills native ash trees, it is time to prepare for the increased costs of tree removal and replacement planting. With proper planning and management of the current canopy in Lenox, these costs can be extended over years and public safety issues from dead and dying ash trees mitigated.

Trees are an important component of Lenox's infrastructure and one of the greatest assets to the community. The benefits of trees are immense. Trees provide the community with improved air quality, storm water runoff interception, energy conservation, lower traffic speeds, increased property values, reduced crime, improved mental health and create a desirable place to live, to name just a few benefits. It is essential that these benefits be maintained for the people of Lenox and future generations through good urban forestry management.

Good urban forestry management involves setting goals and developing management strategies to achieve these goals. An essential part of developing management strategies is a comprehensive public tree inventory. The inventory supplies information that will be used for maintenance, removal schedules, tree planting and budgeting. Basing actions on this information will help meet Lenox's urban forestry goals.

## Inventory

---

In 2015, a tree inventory was conducted that included 100% of the city owned trees on both streets and parks. The tree data was collected using a handheld Global Positioning System (GPS) receiver. The data collector gives Geographic Information Systems (GIS) coordinates with an accuracy of 3 meters, which can be used in Arc GIS as an active GIS data layer. Because the inventory is a digital document the data can be updated with new information and become a working document.

The programming used to collect tree information on the data collectors was written to be compatible with a state-of-the-art software suite called i-Tree. i-Tree was developed by the USDA Forest Service to quantify the structure of community trees and the environmental services that trees provide. The i-Tree suite is a public domain which can be accessed for free.

To quantify the urban forest structure and benefits, specific data is collected for each tree. This data includes: location, land use, species, diameter at 4.5 ft, recommended maintenance, priority of that maintenance, leaf health, and wood condition. Additionally, signs and symptoms associated with EAB were noted for all ash trees. The signs and symptoms noted were canopy dieback, epicormic shoots, bark splitting, D-shaped borer exit holes, and wood pecker damage.

## Inventory Results

---

The data collected for the 1082 city trees was entered into the USDA Forest service program Street Tree Resource Analysis Tool for Urban forestry Management (STRATUM), part of the i-Tree suite. The following are results from the i-Tree STRATUM analysis. Findings

## **Annual Benefits**

### **Annual Energy Benefits**

Trees conserve energy by shading buildings and blocking winds. Lenox's trees reduce energy related costs by approximately \$14,781 annually (Appendix A, Table 1). These savings are both in Electricity (70 MWh) and in Natural Gas (9,659.8 Therms).

### **Annual Stormwater Benefits**

Lenox's trees intercept about 754,838 gallons of rainfall or snow melt a year (Appendix A, Table 2). This interception provides \$20,456.00 of benefits to the city.

### **Annual Air Quality Benefits**

Air quality is a persistent public health issue in Iowa. The urban forest improves air quality by removing pollutants, lowering air temperature, and reducing energy consumption, which in turn reduces emissions from power plants, and emitting volatile organic matter (ozone). In Lenox, it is estimated that trees remove 900.4 lbs of air pollution (ozone (O<sub>3</sub>), particulate matter less than 10 microns (PM<sub>10</sub>), carbon monoxide (CO), nitrogen dioxide (NO<sub>2</sub>), and sulfur dioxide (SO<sub>2</sub>)) per year with a net value of \$2,531 (Appendix A, Table 3).

### **Annual Carbon Benefits**

Carbon sequestration and storage reduce the amount of carbon in the atmosphere, mitigating climate change. In Lenox, trees sequester about 182,465 lbs of carbon a year with an associated value of \$2,146 (Appendix A, Table 4). In addition, the trees store 2,727,468 lbs of carbon, with a yearly benefit of \$20,456 (Appendix A, Table 5).

### **Annual Aesthetics Benefits**

Social benefits of trees are hard to capture. The analysis does have a calculation for this area that includes: aesthetic value, property values, lowered rates of mental illness and crime, city livability and much more. Lenox receives \$44,135 in annual social benefits from trees (Appendix A, Table 6).

### **Financial Summary of all Benefits**

According to the USDA Forest Service i-Tree STRATUM analysis, Lenox's trees provide \$16,237 of benefits annually. Benefits of individual trees vary based on size, species, health and location, but on average each of the 286 trees in Lenox provide approximately \$56.97 annually (Appendix A, Table 7).

## **Forest Structure**

### **Species Distribution**

Lenox has over 50 different tree species along city streets and parks (Appendix A, Figure 1). The distribution of trees is as follows:

Species	# of Standard Trees	% of Public
Norway maple	60 (N/A)	21.05
Silver maple	53 (N/A)	18.60
Green ash	38 (N/A)	13.33
Pin oak	27 (N/A)	9.47
Apple	22 (N/A)	7.72
Maple	20 (N/A)	7.02
Siberian elm	11 (N/A)	3.86
Red maple	10 (N/A)	3.51

Bur oak	8 (N/A)	2.81
Honeylocust	6 (N/A)	2.11
Spruce	6 (N/A)	2.11
Broadleaf Evergreen Small	6 (N/A)	2.11
Littleleaf linden	4 (N/A)	1.40
Tulip tree	3 (N/A)	1.05
White ash	2 (N/A)	0.70
Basswood	2 (N/A)	0.70
Boxelder	1 (N/A)	0.35
Eastern redbud	1 (N/A)	0.35
Black walnut	1 (N/A)	0.35
American sycamore	1 (N/A)	0.35
Birch	1 (N/A)	0.35
American elm	1 (N/A)	0.35
Eastern red cedar	1 (N/A)	0.35
Citywide	285 (N/A)	100.00

## Age Class

A good portion of Lenox’s trees (28.42%) are between 6 and 18 inches in diameter at 4.5 ft (Appendix A, Figure 2). For age, it is preferred that the highest amounts of trees are in the smallest size category (a downward slope) to prepare for natural mortality and to maintain canopy cover. Lenox’s size curve is about in the middle, indicating a stand that has a fair representation of young and mature trees .

## Condition: Wood and Foliage

Both wood condition and leaf condition are good indicators of the overall health of the urban forest. The foliage condition results for Lenox indicate that over 99% of the trees are in good health. Similarly, over 99% of Lenox’s trees are in good health for wood condition (appendix A, Figure 4 & Appendix B, Figure 3). Wood condition that is in poor health, dead or dying is less than 1% of the population. This is an estimate of trees that need management follow up.

## Management Needs

The following outlines the specific management needs of the street and park trees by number of trees and percent of canopy (Appendix B, Figure 3).

Crown Cleaning	286	100%
Tree Removal	1	<1%

## Canopy Cover

The canopy cover included in the Lenox inventory includes approximately 8 acres.

## Land Use and Location

The majority of Lenox’s city and park trees are in planting strips in single family residential neighborhoods (Appendix A, Figure 6 & Appendix A, Figure7). The following describes the land use and locations for the street and park trees.

### Land Use

Single Family Dwelling	100%
------------------------	------

### Location

Planting strip	12%
----------------	-----



## **Recommendations**

---

### **Risk Management**

Hazardous trees can be a significant threat to both people and property. Trees that are dead or dying, or that have large issues such as trunk cracks longer than 18 inches should be removed. Broken branches and branches that interfere with motorist's vision of pedestrians, vehicles, traffic signs and signals, etc. should be removed.

#### Hazardous trees

Lenox has 1 critical concern trees that need immediate removal. This tree can be seen on the Location of Trees with Recommended Maintenance map (Appendix B, Figure 4). It is recommended to start with the large diameter critical concern trees first. Please refer to the six year maintenance plan at the end of this section. After all of the critical concern trees are addressed, there should be follow up on the trees marked as needing maintenance.

### **Pruning Cycle**

Proper pruning can extend the life and good health of trees, as well as reduce public safety issues. In the Management Needs section of the Findings there are four main maintenance issues to be addressed: routine pruning, crown cleaning, crown raising, and crown reduction. Crown cleaning removes dead, diseased, and damaged limbs. Crown raising is the removal of lower branches that are 2 inches in diameter or larger in the case of providing clearance for pedestrians or vehicles. Crown reduction is removing individual limbs from structures or utility wires. It is recommended that all trees be pruned on a routine schedule every five to seven years. Please refer to the six year maintenance plan for further information.

### **Planting**

Most of the planting over the next 5 years will replace the trees that are removed. It is recommended to plant 1.2 trees for every tree removed, since survival rates will not be 100%. Please refer to the six year maintenance plan at the end of this section. It is not essential that the new trees be planted in the same location of the trees being removed. However, maintaining the same number of trees helps ensure continuation of the benefits of the existing forest in Lenox.

It is important to plant a diverse mix of species in the urban forest to maintain canopy health, since most insects and diseases target a genus (ash) or species (green ash) of trees. Current diversity recommendations advise that a genus (i.e. maple, oak) not make up more than 20% of the urban forest and a single species (i.e. silver maple, sugar maple, white oak, bur oak) not make up more than 10% of the total urban forest. Presently, the forest is heavily planted with maple (38.3%) (Appendix A, Figure 1). Maples should not be planted until this percentage can be lowered. Also, ash trees have not been recommended since 2002, due to the threat of EAB. Other species to avoid because they are public nuisances include: cottonwood, poplar, box elder, Chinese elm, evergreen, willow or black walnut, as outlined in section 151.02 of the city ordinance (Appendix C). All trees planted must meet the restrictions in city ordinance 151.02 (Appendix C).

## Continual Monitoring

Due to the threat of EAB, it is important to continuously check the health of ash trees. It is recommended that ash trees be checked with a visual survey every year for tree decline and for the following signs and symptoms: canopy dieback, epicormic shoots, bark splitting, D-shaped borer exit holes, and wood pecker damage.

## Six Year Maintenance Plan

### Year 1

Removal: 1 critical concern tree

Planting and Replacement: 8 trees to be planted in open locations

Visual Survey for signs and symptoms of EAB

### Year 2

Removal: 8 ash trees with poor health

\*Or saving for ash tree treatment

Planting and Replacement: plant 9 trees in open locations from year one removals

Routine trimming: Contract to trim city trees

Visual Survey for signs and symptoms of EAB

### Year 3

Removal: 8 trees - removal of any new critical concern trees and ash in poor health

\*Or saving for ash tree treatment

Planting and Replacement: 9 trees to be planted in open locations and locations from previous removals

Visual Survey for signs and symptoms of EAB

### Year 4

Removal: 8 trees - removal of any new critical concern trees and ash in poor health

\*Or saving for ash tree treatment

Planting and Replacement: 9 trees to be planted in open locations and locations from previous removals

Visual Survey for signs and symptoms of EAB

### Year 5

Removal: 8 trees - removal of any new critical concern trees and ash in poor health

\*Or saving for ash tree treatment

Planting and Replacement: 9 trees to be planted in open locations and locations from previous removals

Visual Survey for signs and symptoms of EAB

### Year 6

Removal: 8 trees - removal of any new critical concern trees and ash in poor health

\*Or saving for ash tree treatment

Planting and Replacement: 9 trees to be planted in open locations and locations from previous removals

Visual Survey for signs and symptoms of EAB

\*Reduction of ash over 6 years: Approximately 2 ash trees removed (approximately 25% of ash). EAB could potentially kill all ash within 4 years of its arrival.

\*\* To remove all ash trees within 6 years, the budget would need to be increased to \$3,700 a year. If the budget were increased to \$1,700.00 a year all ash could be removed in 13 years.



# **Emerald Ash Borer Plan**

---

## **Ash Tree Removal**

Tree removal will be prioritized with dead, dying, hazardous trees to be removed first (Appendix B, Figure 4). Next will be all ash in poor condition and displaying signs and symptoms of EAB (Appendix B, Figure 2 & Appendix B, Figure 3). *\*City ownership of the tree recommended for removal should be verified prior to any removal\**

## **Treatment of Ash Trees**

Chemical treatment can be effective tool for communities to spread removal costs out over several years while allowing trees to continue to provide benefits. However, treatment is not recommended if EAB is more than 15 miles away from the community. For more information on the cost of treatment strategies visit <http://extension.entm.purdue.edu/treecomputer/>

## **EAB Quarantines**

EAB is an extremely destructive plant pest and it is responsible for the death and decline of millions of ash trees. Ash in both forested and urban settings constitute a significant portion of the canopy cover in the United States. Current tools to detect, control, suppress and eradicate this pest are not as robust as the USDA would desire. In order to stay ahead of this hard to detect beetle, the USDA is attempting to contain the beetle before it spreads beyond its known positions by regulating articles.

A regulated article under the USDA's quarantine includes any of the following items:

- emerald ash borer
- firewood of all hardwood species (for example ash, oak, maple and hickory)
- nursery stock and green lumber of ash
- any other ash material, whether living, dead, cut or fallen, including logs, stumps, roots, branches, as well as composted and not composted chips of the genus ash (Mountain ash is not included)

In addition, any other article, product or means of conveyance not listed above may be designated as a regulated article if a USDA inspector determines that it presents a risk of spreading EAB once a quarantine is in effect for your county.

## **Wood Disposal**

A very important aspect of planning is determining how wood infested with EAB will be handled, keeping in mind that quarantines will restrict its movement. Consider who will cut and haul the dead and dying trees? Is there an accessible, secured site big enough to store and sort the hundreds of trees and the associated brush and chips? How will wood be disposed of or utilized? Do you have equipment capable of handling the amount and size of ash trees your tree inventory has identified? Once your county is under quarantine for EAB, contact USDA-APHIS-PPQ at 515-251-4083 or visit the website [http://www.aphis.usda.gov/plant\\_health/plant\\_pest\\_info/emerald\\_ash\\_b/regulatory.shtml](http://www.aphis.usda.gov/plant_health/plant_pest_info/emerald_ash_b/regulatory.shtml). Wood waste can be disposed of as you normally would if your county is not part of a quarantine.

## **Canopy Replacement**

As budget permits, all removed trees will be replaced. All trees will meet the restrictions in city ordinance 151.02 (Appendix C). The new plantings will be a diverse mix and will not include ash, maple, cottonwood, poplar, box elder, Chinese elm, evergreen, willow or black walnut.

## **Postponed Work**

While finances, staffing and equipment are focused on the management of ash, usual services may be delayed. Tree removal requests on genera other than ash will be prioritized by hazardous or emergency situations only.

## **Monitoring**

It is recommended that ash trees be checked with a visual survey every year for tree death and for the following signs and symptoms: canopy dieback, epicormic shoots, bark splitting, D-shaped borer exit holes, and wood pecker damage.

## **Private Ash Trees**

It is strongly recommended that private property owners start removing ash trees on their property upon arrival of EAB. City Code 151.06 states "If it is determined with reasonable certainty that any such condition exists (trees or shrubs in the City reported or suspected to be infected with or damaged by any disease or insect or disease pests) on private property and that the danger to other trees or to adjoining property or passing motorists or pedestrians is imminent, the Council shall notify by certified mail the owner, occupant or person in charge of such property to correct such condition by treatment or removal within fourteen (14) days of said notification. If such owner, occupant or person in charge of said property fails to comply within 14 days of receipt of notice, the Council may cause the condition to be corrected and the cost assessed against the property."

## **Budget**

---

### **Current Budget**

**Total \$24,000 over 6 years (\$4,000/year)**

#### **FY 2017 Budget**

Removal: \$2,500

Replanting and associated maintenance: \$1,500.00

#### **FY 2018 Budget**

Removal: \$2,500

Replanting and associated maintenance: \$1,500.00

#### **FY 2019 Budget**

Removal: \$2,500

Replanting and associated maintenance: \$1,500.00

#### **FY 2020 Budget**

Removal: \$2,500

Replanting and associated maintenance: \$1,500.00

#### **FY 2021 Budget**

Removal: \$2,500

Replanting and associated maintenance: \$1,500.00

## FY 2022 Budget

Removal: \$2,500

Replanting and associated maintenance: \$1,500.00

**\* Reduction of ash over 6 years: Approximately 10 ash trees removed (approximately 25% of ash). EAB could potentially kill all ash within 4 years of its arrival). It will take approximately 24 years to remove all ash with the current budget.**

## Purposed Budget Increase

EAB could potentially kill all ash trees in Lenox within 4 years of its arrival. To remove all ash trees within 6 years the budget would need to be increased to \$3,700 a year. If the budget were increased to \$1,700 a year all ash could be removed within 13 years. Additionally, it is recommended that Lenox apply for grants to fund replacement trees. Utility Company grants are usually between \$500 and \$10,000 for community-based, tree-planting projects that include parks, gateways, cemeteries, nature trails, libraries, nursing homes, and schools.

## Works Cited

Census Bureau. 2010. <http://censtats.census.gov/data/IA/1601964290.pdf> (April, 2013)

USDA Forest Service, et al. 2006. i-Tree Software Suite v1.0 User's Manual. Pp. 27-40.

McPherson EG, Simpson JR, Peper PJ, Gardner SL, Vargas KE, Ho J, Maco S, Xiao Q. 2005b. City of Charleston, South Carolina, municipal forest resource analysis. Internal Tech Rep. Davis, CA: U.S. Department of Agriculture, Center for Urban Forest Research. p. 57

Nowak, D.J. and J.F. Dwyer. 2007. Understanding the benefits and costs of urban forest ecosystems. In: Kuser, J. (ed.) Urban and Community Forestry in the Northeast. New York: Springer. Pp. 25-46.

Peper, Paula J.; McPherson, E. Gregory; Simpson, James R.; Vargas, Kelaine E.; Xiao, Qingfu 2009. Lower Midwest community tree guide: benefits, costs, and strategic planting. Gen. Tech. Rep. PSW-GTR-219. Albany, CA: U.S. Department of Agriculture, Forest Service, Pacific Southwest Research Station. p.115

## Appendix C: Lenox Tree Ordinances

### CHAPTER 151 TREES AND GRASS

151.01 Definition 151.05 Disease Control  
151.02 Planting Restrictions 151.06 Inspection and Removal  
151.03 Duty to Trim Trees 151.07 Cutting or Mowing of Grass  
151.04 Trimming Trees to be Supervised

**151.01 DEFINITION.** For use in this chapter, “boulevard” means that part of the street, avenue or highway in the City not covered by sidewalk and lying between the lot line and the curb line; or, on unpaved streets, that part of the street, avenue or highway lying between the lot line and that portion of the street usually traveled by vehicular traffic.

**151.02 PLANTING RESTRICTIONS.** No tree shall be planted in any boulevard or street except in accordance with the following:

1. **Alignment.** All trees planted in any street shall be planted in the boulevard midway between the outer line of the sidewalk and the curb. In the event a curb line is not established, trees shall be planted on a line ten (10) feet from the property line.
2. **Spacing.** Trees shall not be planted on any boulevard which is less than nine (9) feet in width, or contains less than eighty-one (81) square feet of exposed soil surface per tree. Trees shall not be planted closer than twenty (20) feet from street intersections (property lines extended) and ten (10) feet from driveways. If it is at all possible trees should be planted inside the property lines and not between the sidewalk and the curb.
3. **Prohibited Trees.** No person shall plant in any street any fruit-bearing tree or any tree of the kinds commonly known as cottonwood, poplar, box elder, Chinese elm, evergreen, willow or black walnut.

**151.03 DUTY TO TRIM TREES.** The owner or agent of the abutting property shall keep the trees on, or overhanging the street, trimmed so that all branches will be at least eighteen (18) feet above the surface of a street, twenty (20) feet above the surface of a primary highway, and eight (8) feet above the sidewalks. If the abutting property owner fails to trim the trees, the City may serve notice on the abutting property owner requiring that such action be taken within five (5) days. If such action is not taken within that time, the City may perform the required action and assess the costs against the abutting property for collection in the same manner as a property tax.

(Code of Iowa, Sec. 364.12[2c, d, & e])

**151.04 TRIMMING TREES TO BE SUPERVISED.** Except as allowed in Section 151.03, it is unlawful for any person to trim or cut any tree in a street or public place unless the work is done under the supervision of the City.

**151.05 DISEASE CONTROL.** Any dead, diseased or damaged tree or shrub which may harbor serious insect or disease pests or disease injurious to other trees is hereby declared to be a nuisance.

**151.06 INSPECTION AND REMOVAL.** The Council shall inspect or cause to be inspected any trees or shrubs in the City reported or suspected to be infected with or damaged by any disease or insect or disease pests, and such trees and shrubs shall be subject to removal as follows:

1. City Property. If it is determined that any such condition exists on any public property, including the strip between the curb and the lot line of private property, the Council may cause such condition to be corrected by treatment or removal. The Council may also order the removal of any trees on the streets of the City which interfere with the making of improvements or with travel thereon.

2. Private Property. If it is determined with reasonable certainty that any such condition exists on private property and that the danger to other trees or to adjoining property or passing motorists or pedestrians is imminent, the Council shall notify by certified mail the owner, occupant or person in charge of such property to correct such condition by treatment or removal within fourteen (14) days of said notification. If such owner, occupant or person in charge of said property fails to comply within 14 days of receipt of notice, the Council may cause the condition to be corrected and the cost assessed against the property.

(Code of Iowa, Sec. 364.12[3b & h])

#### 151.07 CUTTING OR MOWING OF GRASS.

1. Duty to Cut and Mow Lawns and Lots. The owner of any property shall cut and mow all lawns and lots so that such growth shall be less than four (4) inches at all times.

2. Cutting and Mowing by City. If a property owner refuses or fails to cut and mow lawns and lots within forty-eight (48) hours after being delivered a notice from the City to perform such action, the Council may require said work to be done and the cost and expenses thereof shall be assessed to the property owner after due notice is given. The amount of such assessment shall be certified to the County Auditor as provided by law and the same shall be collected with and in the same manner as general property taxes.

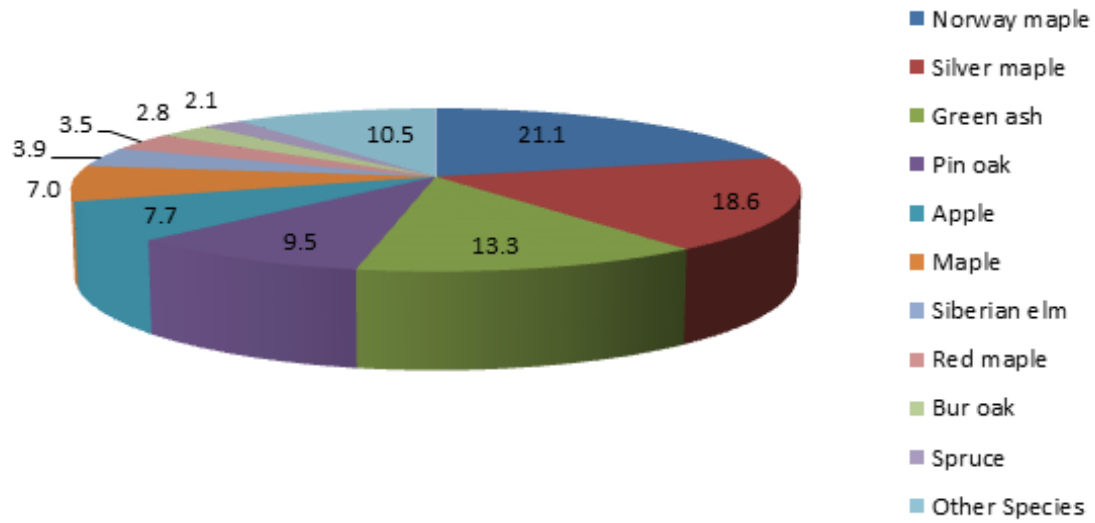
#### **The State of Iowa is an Equal Opportunity Employer and provider of ADA services.**

Federal law prohibits employment discrimination on the basis of race, color, age, religion, national origin, sex or disability. State law prohibits employment discrimination on the basis of race, color, creed, age, sex, sexual orientation, gender identity, national origin, religion, pregnancy, or disability. State law also prohibits public accommodation (such as access to services or physical facilities) discrimination on the basis of race, color, creed, religion, sex, sexual orientation, gender identity, religion, national origin, or disability. If you believe you have been discriminated against in any program, activity or facility as described above, or if you desire further information, please contact the Iowa Civil Rights Commission, 1-800-457-4416, or write to the Iowa Department of Natural Resources, Wallace State Office Bldg., 502 E. 9<sup>th</sup> St., Des Moines, IA 50319.

If you need accommodations because of disability to access the services of this Agency, please contact the Director at 515-281-5918.

# Species Distribution of Public Trees

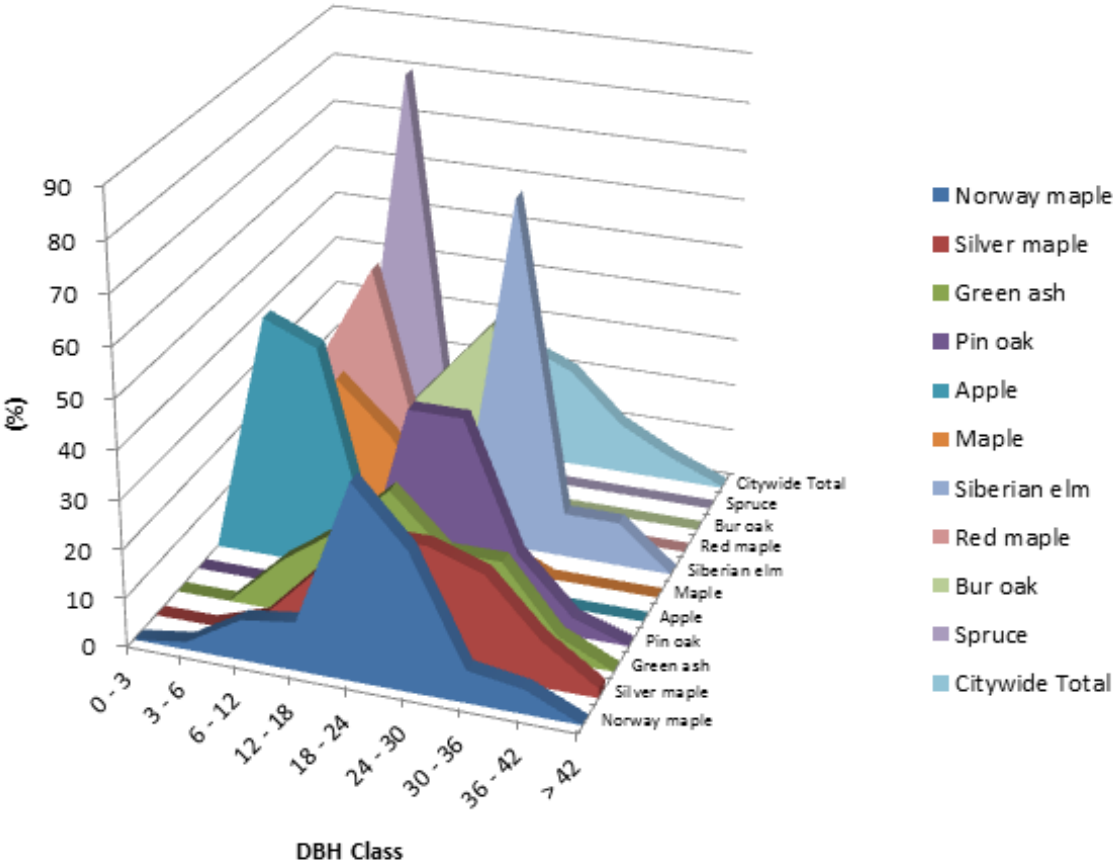
4/10/2016



Species	Percent
Norway maple	21.1
Silver maple	18.6
Green ash	13.3
Pin oak	9.5
Apple	7.7
Maple	7.0
Siberian elm	3.9
Red maple	3.5
Bur oak	2.8
Spruce	2.1
Other Species	10.5
Total	100.0

Relative Age Distribution of Top 10 Public Tree Species for All Zones (%)

4/10/2016



Species	DBH class (in)								
	0-3	3-6	6-12	12-18	18-24	24-30	30-36	36-42	> 42
Norway maple	0.00	1.67	8.33	10.00	40.00	28.33	6.67	5.00	0.00
Silver maple	0.00	0.00	3.77	15.09	24.53	24.53	20.75	9.43	1.89
Green ash	0.00	0.00	10.53	18.42	28.95	18.42	18.42	5.26	0.00
Pin oak	0.00	0.00	0.00	0.00	40.74	40.74	14.81	3.70	0.00
Apple	0.00	50.00	45.45	4.55	0.00	0.00	0.00	0.00	0.00
Maple	5.00	20.00	35.00	25.00	10.00	5.00	0.00	0.00	0.00
Siberian elm	0.00	0.00	9.09	0.00	0.00	72.73	9.09	9.09	0.00
Red maple	0.00	30.00	50.00	10.00	10.00	0.00	0.00	0.00	0.00
Bur oak	0.00	25.00	12.50	25.00	37.50	0.00	0.00	0.00	0.00
Spruce	0.00	0.00	83.33	0.00	16.67	0.00	0.00	0.00	0.00
Citywide Total	0.35	9.47	14.74	13.68	25.26	20.70	10.53	4.91	0.35



# Annual Energy Benefits of Public Trees

4/10/2016

Species	Total Electricity (MWh)	Electricity (\$)	Total Natural Gas (Therms)	Natural Gas (\$)	Total (\$)	Standard Error	% of Total Trees	% of Total \$	Avg. \$/tree
Norway maple	16.0	1,213	2,355.0	2,308	3,521	(N/A)	21.1	23.8	58.68
Silver maple	16.8	1,278	2,207.4	2,163	3,442	(N/A)	18.6	23.3	64.94
Green ash	10.8	820	1,484.8	1,455	2,275	(N/A)	13.3	15.4	59.87
Pin oak	8.7	658	1,192.2	1,168	1,827	(N/A)	9.5	12.4	67.66
Apple	1.2	89	194.7	191	279	(N/A)	7.7	1.9	12.70
Maple	3.1	232	407.2	399	631	(N/A)	7.0	4.3	31.56
Siberian elm	3.6	274	497.7	488	762	(N/A)	3.9	5.2	69.26
Red maple	1.2	91	168.2	165	256	(N/A)	3.5	1.7	25.61
Bur oak	1.4	107	189.4	186	293	(N/A)	2.8	2.0	36.59
Spruce	0.4	33	67.2	66	98	(N/A)	2.1	0.7	16.39
Honeylocust	1.9	142	237.2	232	375	(N/A)	2.1	2.5	62.44
Broadleaf Evergreen Small	0.1	10	23.8	23	34	(N/A)	2.1	0.2	5.61
Littleleaf linden	0.7	54	94.2	92	146	(N/A)	1.4	1.0	36.50
Tulip tree	0.7	56	92.1	90	146	(N/A)	1.1	1.0	48.59
Basswood	0.6	47	80.7	79	126	(N/A)	0.7	0.9	63.12
White ash	0.9	72	116.6	114	186	(N/A)	0.7	1.3	93.12
Eastern red cedar	0.1	8	16.4	16	25	(N/A)	0.4	0.2	24.57
Birch	0.3	20	39.6	39	59	(N/A)	0.4	0.4	58.69
American elm	0.5	40	67.0	66	106	(N/A)	0.4	0.7	105.59
Eastern redbud	0.1	6	12.8	13	18	(N/A)	0.4	0.1	18.19
Boxelder	0.2	15	23.9	23	39	(N/A)	0.4	0.3	38.63
American sycamore	0.4	29	53.7	53	82	(N/A)	0.4	0.6	82.02
Black walnut	0.3	20	38.1	37	57	(N/A)	0.4	0.4	57.32
Total	70.0	5,315	9,659.8	9,467	14,781	(N/A)	100.0	100.0	51.86

# Annual Stormwater Benefits of Public Trees

4/10/2016

Species	Total rainfall interception (Gal)	Total (\$)	Standard Error	% of Total Trees	% of Total \$	Avg. \$/tree
Norway maple	161,394	4,374	(N/A)	21.1	21.4	72.90
Silver maple	223,620	6,060	(N/A)	18.6	29.6	114.34
Green ash	121,700	3,298	(N/A)	13.3	16.1	86.79
Pin oak	92,043	2,494	(N/A)	9.5	12.2	92.38
Apple	4,067	110	(N/A)	7.7	0.5	5.01
Maple	21,558	584	(N/A)	7.0	2.9	29.21
Siberian elm	37,963	1,029	(N/A)	3.9	5.0	93.53
Red maple	8,009	217	(N/A)	3.5	1.1	21.70
Bur oak	11,654	316	(N/A)	2.8	1.5	39.48
Spruce	5,947	161	(N/A)	2.1	0.8	26.86
Honeylocust	16,945	459	(N/A)	2.1	2.2	76.54
Broadleaf Evergreen Small	465	13	(N/A)	2.1	0.1	2.10
Littleleaf linden	5,346	145	(N/A)	1.4	0.7	36.22
Tulip tree	5,522	150	(N/A)	1.1	0.7	49.88
Basswood	6,956	189	(N/A)	0.7	0.9	94.25
White ash	13,182	357	(N/A)	0.7	1.7	178.62
Eastern red cedar	1,635	44	(N/A)	0.4	0.2	44.30
Birch	2,479	67	(N/A)	0.4	0.3	67.19
American elm	4,551	123	(N/A)	0.4	0.6	123.33
Eastern redbud	264	7	(N/A)	0.4	0.0	7.17
Boxelder	1,456	39	(N/A)	0.4	0.2	39.46
American sycamore	5,491	149	(N/A)	0.4	0.7	148.79
Black walnut	2,591	70	(N/A)	0.4	0.3	70.21
Citywide total	754,838	20,456	(N/A)	100.0	100.0	71.78

# Annual Air Quality Benefits of Public Trees

4/10/2016

Species	Deposition (lb)				Total Depos. (\$)	Avoided (lb)				Total Avoided (\$)	BVOC Emissions (lb)	BVOC Emissions (\$)	Total (lb)	Total (\$)	Standard Error	% of Total Trees	Avg. \$/tree
	O <sub>3</sub>	NO <sub>2</sub>	PM <sub>10</sub>	SO <sub>2</sub>		NO <sub>2</sub>	PM <sub>10</sub>	VOC	SO <sub>2</sub>								
Norway maple	34.1	5.9	16.6	1.5	184	77.9	11.2	10.7	72.5	481	-7.9	-30	222.5	636 (N/A)		21.1	10.60
Silver maple	36.1	6.1	18.0	1.6	195	79.3	11.6	11.1	76.2	497	-19.0	-71	221.1	621 (N/A)		18.6	11.71
Green ash	15.1	2.4	7.2	0.7	80	51.6	7.5	7.2	49.0	322	0.0	0	140.7	402 (N/A)		13.3	10.58
Pin oak	15.5	2.7	8.0	0.7	85	41.4	6.0	5.7	39.3	258	-29.0	-109	90.4	234 (N/A)		9.5	8.67
Apple	0.7	0.1	0.4	0.0	4	5.9	0.8	0.8	5.3	36	0.0	0	14.1	40 (N/A)		7.7	1.81
Maple	4.4	0.8	2.2	0.2	24	14.5	2.1	2.0	13.9	91	-1.6	-6	38.5	108 (N/A)		7.0	5.42
Siberian elm	6.1	1.0	3.0	0.3	33	17.3	2.5	2.4	16.4	107	0.0	0	49.0	141 (N/A)		3.9	12.77
Red maple	1.5	0.3	0.8	0.1	8	5.8	0.8	0.8	5.4	36	-0.5	-2	14.9	42 (N/A)		3.5	4.19
Bur oak	1.0	0.2	0.6	0.0	6	6.7	1.0	0.9	6.4	42	0.0	0	16.8	48 (N/A)		2.8	5.95
Spruce	0.6	0.1	0.6	0.1	4	2.1	0.3	0.3	1.9	13	-2.2	-8	3.8	9 (N/A)		2.1	1.47
Honeylocust	3.2	0.5	1.5	0.1	17	8.8	1.3	1.2	8.5	55	-2.4	-9	22.7	63 (N/A)		2.1	10.51
Broadleaf Evergreen Small	0.0	0.0	0.1	0.0	0	0.7	0.1	0.1	0.6	4	0.0	0	1.6	5 (N/A)		2.1	0.75
Littleleaf linden	0.7	0.1	0.4	0.0	4	3.4	0.5	0.5	3.2	21	-0.4	-1	8.4	24 (N/A)		1.4	5.91
Tulip tree	0.5	0.1	0.3	0.0	3	3.4	0.5	0.5	3.3	21	0.0	0	8.6	24 (N/A)		1.1	8.06
Basswood	0.9	0.1	0.4	0.0	5	2.9	0.4	0.4	2.8	18	0.0	0	8.1	23 (N/A)		0.7	11.57
White ash	2.8	0.5	1.3	0.1	15	4.4	0.6	0.6	4.3	28	0.0	0	14.6	43 (N/A)		0.7	21.29
Eastern red cedar	0.3	0.1	0.3	0.0	2	0.5	0.1	0.1	0.5	3	-0.9	-3	1.0	2 (N/A)		0.4	2.19
Birch	0.5	0.1	0.2	0.0	3	1.3	0.2	0.2	1.2	8	-0.1	0	3.6	10 (N/A)		0.4	10.16
American elm	1.5	0.3	0.7	0.1	8	2.5	0.4	0.3	2.4	15	0.0	0	8.1	23 (N/A)		0.4	23.47
Eastern redbud	0.0	0.0	0.0	0.0	0	0.4	0.1	0.1	0.3	2	0.0	0	0.9	3 (N/A)		0.4	2.55
Boxelder	0.1	0.0	0.1	0.0	1	0.9	0.1	0.1	0.9	6	-0.1	0	2.3	6 (N/A)		0.4	6.37
American sycamore	0.8	0.1	0.4	0.0	4	1.9	0.3	0.3	1.8	12	0.0	0	5.5	16 (N/A)		0.4	15.71
Black walnut	0.3	0.0	0.1	0.0	1	1.3	0.2	0.2	1.2	8	0.0	0	3.3	9 (N/A)		0.4	9.34
Citywide total	127.0	21.5	63.0	5.7	687	334.8	48.7	46.4	317.2	2,084	-64.1	-240	900.4	2,531 (N/A)		100.0	8.88

# Stored CO2 Benefits of Public Trees

4/10/2016

Species	Total Stored CO2 (lbs)	Total (\$)	Standard Error	% of Total Trees	% of Total \$	Avg. \$/tree
Norway maple	560,877	4,207	(N/A)	21.1	20.6	70.11
Silver maple	786,381	5,898	(N/A)	18.6	28.8	111.28
Green ash	493,404	3,701	(N/A)	13.3	18.1	97.38
Pin oak	395,449	2,966	(N/A)	9.5	14.5	109.85
Apple	14,072	106	(N/A)	7.7	0.5	4.80
Maple	50,552	379	(N/A)	7.0	1.9	18.96
Siberian elm	147,948	1,110	(N/A)	3.9	5.4	100.87
Red maple	17,728	133	(N/A)	3.5	0.6	13.30
Bur oak	34,122	256	(N/A)	2.8	1.3	31.99
Spruce	4,626	35	(N/A)	2.1	0.2	5.78
Honeylocust	40,344	303	(N/A)	2.1	1.5	50.43
Broadleaf Evergreen	1,067	8	(N/A)	2.1	0.0	1.33
Littleleaf linden	16,433	123	(N/A)	1.4	0.6	30.81
Tulip tree	15,801	119	(N/A)	1.1	0.6	39.50
Basswood	29,615	222	(N/A)	0.7	1.1	111.06
White ash	41,716	313	(N/A)	0.7	1.5	156.43
Eastern red cedar	1,102	8	(N/A)	0.4	0.0	8.27
Birch	7,945	60	(N/A)	0.4	0.3	59.59
American elm	29,353	220	(N/A)	0.4	1.1	220.15
Eastern redbud	908	7	(N/A)	0.4	0.0	6.81
Boxelder	3,624	27	(N/A)	0.4	0.1	27.18
American sycamore	25,943	195	(N/A)	0.4	1.0	194.57
Black walnut	8,458	63	(N/A)	0.4	0.3	63.43
Citywide total	2,727,468	20,456	(N/A)	100.0	100.0	71.78

<b>Annual Aesthetic/Other Benefits of Public Trees</b>
--

4/10/2016

Species	Total (\$)	Standard Error	% of Total Trees	% of Total \$	Avg. \$/tree
Norway maple	1,947	(N/A)	21.1	12.0	32.45
Silver maple	5,171	(N/A)	18.6	31.8	97.56
Green ash	2,112	(N/A)	13.3	13.0	55.57
Pin oak	3,028	(N/A)	9.5	18.6	112.15
Apple	102	(N/A)	7.7	0.6	4.64
Maple	786	(N/A)	7.0	4.8	39.28
Siberian elm	494	(N/A)	3.9	3.0	44.93
Red maple	346	(N/A)	3.5	2.1	34.60
Bur oak	323	(N/A)	2.8	2.0	40.35
Spruce	124	(N/A)	2.1	0.8	20.70
Honeylocust	892	(N/A)	2.1	5.5	148.60
Broadleaf Evergreen Small	6	(N/A)	2.1	0.0	0.99
Littleleaf linden	223	(N/A)	1.4	1.4	55.72
Tulip tree	149	(N/A)	1.1	0.9	49.80
Basswood	112	(N/A)	0.7	0.7	56.23
White ash	126	(N/A)	0.7	0.8	63.18
Eastern red cedar	0	(N/A)	0.4	0.0	0.00
Birch	43	(N/A)	0.4	0.3	43.05
American elm	82	(N/A)	0.4	0.5	82.32
Eastern redbud	6	(N/A)	0.4	0.0	6.40
Boxelder	39	(N/A)	0.4	0.2	39.36
American sycamore	67	(N/A)	0.4	0.4	66.60
Black walnut	58	(N/A)	0.4	0.4	57.69
Citywide total	16,237	(N/A)	100.0	100.0	56.97

Annual Benefits of Public Trees by Species (\$/tree)

4/10/2016

Species	Energy	CO <sub>2</sub>	Air Quality	Stormwater	Aesthetic/Other	Total (\$) Standard Error
Norway maple	58.68	5.63	10.60	72.90	32.45	180.25 (N/A)
Silver maple	64.94	12.47	11.71	114.34	97.56	301.02 (N/A)
Green ash	59.87	8.17	10.58	86.79	55.57	220.99 (N/A)
Pin oak	67.66	13.98	8.67	92.38	112.15	294.85 (N/A)
Apple	12.70	1.26	1.81	5.01	4.64	25.43 (N/A)
Maple	31.56	3.91	5.42	29.21	39.28	109.39 (N/A)
Siberian elm	69.26	8.38	12.77	93.53	44.93	228.88 (N/A)
Red maple	25.61	3.20	4.19	21.70	34.60	89.30 (N/A)
Bur oak	36.59	5.08	5.95	39.48	40.35	127.44 (N/A)
Spruce	16.39	1.42	1.47	26.86	20.70	66.85 (N/A)
Honeylocust	62.44	8.47	10.51	76.54	148.60	306.57 (N/A)
Broadleaf Evergreen S	5.61	0.48	0.75	2.10	0.99	9.94 (N/A)
Littleleaf linden	36.50	5.89	5.91	36.22	55.72	140.23 (N/A)
Tulip tree	48.59	6.74	8.06	49.88	49.80	163.07 (N/A)
Basswood	63.12	8.62	11.57	94.25	56.23	233.80 (N/A)
White ash	93.12	10.11	21.29	178.62	63.18	366.32 (N/A)
Eastern red cedar	24.57	1.35	2.19	44.30	0.00	72.40 (N/A)
Birch	58.69	6.52	10.16	67.19	43.05	185.60 (N/A)
American elm	105.59	10.44	23.47	123.33	82.32	345.16 (N/A)
Eastern redbud	18.19	1.74	2.55	7.17	6.40	36.05 (N/A)
Boxelder	38.63	5.51	6.37	39.46	39.36	129.33 (N/A)
American sycamore	82.02	11.11	15.71	148.79	66.60	324.23 (N/A)
Black walnut	57.32	7.93	9.34	70.21	57.69	202.49 (N/A)
Citywide Total	51.86	7.53	8.88	71.78	56.97	197.02 (N/A)



# Lenox, Iowa



Data and map created by:  
COPPER TREE CONSULTING LLC.  
515-559-4152  
CopperTreeConsulting@gmail.com  
www.coppertreeconsulting.com

0 0.15 0.3 0.6 Miles  
Date: 1/25/2016

● WhiteAsh  
● Green Ash





# Lenox, Iowa



Data and map created by:  
COPPER TREE CONSULTING LLC.  
515-559-4152  
CopperTreeConsulting@gmail.com  
www.coppertreeconsulting.com

Date: 1/25/2016

- |                      |                         |
|----------------------|-------------------------|
| • Bark Split (0)     | • Woodpecker Damage (0) |
| • Epicormics (0)     | • D Exit Holes (0)      |
| • Canopy Dieback (0) |                         |





# Lenox, Iowa



Source: Esri, DigitalGlobe, GeoEye, Earthstar Geographics, CNES/Airbus DS, USDA, USGS, AEX, Getmapping, Aerogrid, IGN, IGP, swisstopo, and the GIS User Community

Data and map created by:  
COPPER TREE CONSULTING LLC.  
515-559-4152  
CopperTreeConsulting@gmail.com  
www.coppertreeconsulting.com

0 0.15 0.3 0.6 Miles  
Date: 1/26/2016

Wood Condition		Leaf Condition	
●	Dead (0)	●	Dead (0)
●	Poor (0)	●	Poor (0)





# Lenox, Iowa



Data and map created by:  
 COPPER TREE CONSULTING LLC.  
 515-559-4152  
 CopperTreeConsulting@gmail.com  
 www.coppertreeconsulting.com

Date: 1/26/2016

## PRIORITY

- |  |   |  |
|--|---|--|
| <span style="color: green;">●</span> Stake/Train (0)   | <span style="color: purple;">●</span> Crown Raising (0)   | <span style="color: red;">●</span> Remove (1)                |
| <span style="color: cyan;">●</span> Crown Cleaning (1) | <span style="color: orange;">●</span> Crown Reduction (0) | <span style="color: green;">■</span> Treat Pests/Disease (0) |

