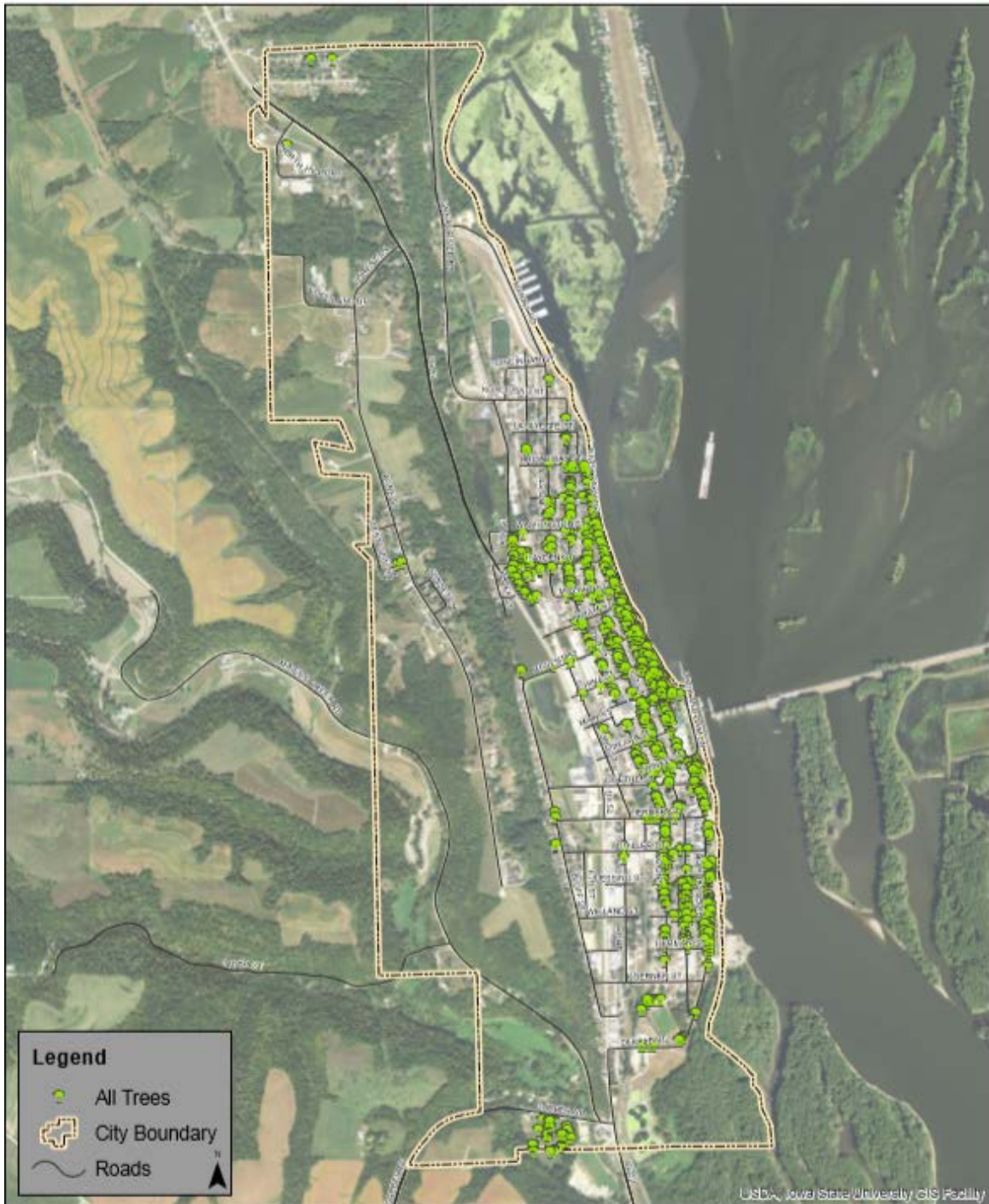


Guttenberg, IA



2018 Urban Forest Management Plan
Prepared by Richard Kittelson
Iowa Department of Natural Resources



Table of Contents

Executive Summary.....	1
Overview	1
Inventory and Results	1
Recommendations	1
Introduction	2
Inventory.....	2
Inventory Results	3
Annual Benefits.....	3
Annual Energy Benefits.....	3
Annual Stormwater Benefits.....	3
Annual Air Quality Benefits.....	3
Annual Carbon Benefits	3
Annual Aesthetics Benefits	3
Financial Summary of all Benefits.....	3
Forest Structure	4
Species Distribution	4
Age Class	4
Condition: Wood and Foliage	4
Management Needs.....	4
Canopy Cover	5
Land Use and Location.....	5
Recommendations	5
Risk Management	5
Pruning Cycle.....	6
Planting	6
Continual Monitoring.....	6
Six Year Maintenance Plan with No Additional Funding	6
Emerald Ash Borer Plan	8
Ash Tree Removal	8
Treatment of Ash Trees	8
EAB Quarantines	8
Wood Disposal	8
Canopy Replacement	9
Postponed Work	9
Monitoring	9
Private Ash Trees	9
Budget.....	9
Works Cited.....	11
Appendix A: i-Tree Data.....	12
Table 1: Annual Energy Benefits.....	12
Table 2: Annual Stormwater Benefits.....	12
Table 3: Annual Air Quality Benefits.....	13
Table 4: Annual Carbon Stored	13
Table 5: Annual Carbon Sequestered	14

Table 6: Annual Social and Aesthetic Benefits.....	14
Table 7: Summary of Benefits in Dollars.....	15
Figure 1: Species Distribution	16
Figure 2: Relative Age Class	17
Figure 3: Foliage Condition	18
Figure 4: Wood Condition.....	18
Figure 5: Canopy Cover in Acres	19
Figure 6: Land Use of city/park trees.....	20
Figure 7: Location of city/park trees.....	21
Appendix B: ArcGIS Mapping.....	22
Appendix C: Guttenberg Tree Ordinances.....	36

Executive Summary

Overview

This plan was developed to assist the City of Guttenberg with managing its urban forest, including budgeting and future planning. Trees can provide a multitude of benefits to the community, and sound management allows a community to best take advantage of these benefits. Management is especially important considering the serious threats posed by forest pests such as the emerald ash borer (EAB). EAB is an invasive insect imported from Eastern Asia on wood shipping crates that kills all species of ash trees (this does not include mountain ash). There is a strong possibility that 9.9% of Guttenberg's city owned trees (ash) will die once EAB becomes established in the community, unless preventative treatment is used. With proper planning and management, the costs of removing dead and dying trees can be extended over years, mitigating public safety issues.

Inventory and Results

In 2018, a tree inventory was conducted using Global Positioning System (GPS) data collectors. The inventory was a complete inventory of street and park trees. Below are some key findings of the 842 trees inventoried.

- Guttenberg's trees provide \$143,015.53 of benefits annually, an average of \$171.89 a tree
- There are over 30 species of trees
- The top three genera are: Maple 36%, Hackberry 16%, and Ash 9.9%
- 37% of trees are in need of some type of management
- 71 trees (54 ash) are recommended for removal

Recommendations

The core recommendations are detailed in the Recommendations Section. The Emerald Ash Borer Plan includes management recommendations as well. Below are some key recommendations.

- Of the 71 trees needing removal, 3 trees are over 24 inches in diameter at 4.5 ft and must be addressed immediately [*City ownership of the trees recommended for removal should be verified prior to any removal*](#)
- 53 of the 83 ash trees should be carefully examined, as they have one or more symptoms that could be related to an EAB infestation
- All trees should be pruned on a routine schedule- one third of the city every other year
- Plant a diverse mix of trees that do not include: ash, maple, cottonwood, poplar, box elder, Chinese elm, evergreen, willow or black walnut
- Check ash trees with a visual survey yearly
- With the current budget it could take 11 years to remove ash – Suggestion: request a budget increase to \$10,500 annually and apply for grants to plant replacement trees

Introduction

This plan was developed to assist Guttenberg with the management, budgeting and future planning of their urban forest. Across the state, forestry budgets continue to decrease with more and more of that money spent on tree removal. With the anticipated arrival of Emerald Ash Borer (EAB), an invasive pest that kills native ash trees, it is time to prepare for the increased costs of tree removal or treatment and replacement planting. With proper planning and management of the current canopy in Guttenberg these costs can be extended over years and public safety issues from dead and dying ash trees mitigated.

Trees are an important component of Guttenberg's infrastructure and one of the greatest assets to the community. The benefits of trees are immense. Trees provide the community with improved air quality, stormwater runoff interception, energy conservation, lower traffic speeds, increased property values, reduced crime, improved mental health and create a desirable place to live, to name just a few benefits. It is essential that these benefits be maintained for the people of Guttenberg and future generations through good urban forestry management.

Good urban forestry management involves setting goals and developing management strategies to achieve these goals. An essential part of developing management strategies is a comprehensive public tree inventory. The inventory supplies information that will be used for maintenance, removal schedules, tree planting and budgeting. Basing actions on this information will help meet Guttenberg's urban forestry goals.

Inventory

In 2018, a tree inventory was conducted that included 100% of the city owned trees on both streets and parks. The tree data was collected using a handheld Global Positioning System (GPS) receiver. The data collector gives Geographic Information Systems (GIS) coordinates with an accuracy of 3 meters, which can be used in Arc GIS as an active GIS data layer. Because the inventory is a digital document the data can be updated with new information and become a working document.

The programming used to collect tree information on the data collectors was written to be compatible with a state-of-the-art software suite called i-Tree. i-Tree was developed by the USDA Forest Service to quantify the structure of community trees and the environmental services that trees provide. The i-Tree suite is a public domain which can be accessed for free.

To quantify the urban forest structure and benefits, specific data is collected for each tree. This data includes: location, land use, species, diameter at 4.5 ft, recommended maintenance, priority of that maintenance, leaf health, and wood condition. Additionally, signs and symptoms associated with EAB were noted for all ash trees. The signs and symptoms noted were canopy dieback, epicormic shoots, bark splitting, D-shaped borer exit holes, and wood pecker damage.

Inventory Results

The data collected for the 842 city trees was entered into the USDA Forest service program Street Tree Resource Analysis Tool for Urban forestry Management as part of the i-Tree suite. The following are results from the i-Tree STREETS analysis.

Annual Benefits

Annual Energy Benefits

Trees conserve energy by shading buildings and blocking winds. Guttenberg's trees reduce energy related costs by approximately \$39,674.15 annually (Appendix A, Table 1). These savings are both in Electricity (188.13 MWh) and in Natural Gas (25,913.01 Therms).

Annual Stormwater Benefits

Guttenberg's trees intercept about 1,910,400.94 gallons of rainfall or snow melt a year (Appendix A, Table 2). This interception provides \$51,771.87 of benefits to the city.

Annual Air Quality Benefits

Air quality is a persistent public health issue in Iowa. The urban forest improves air quality by removing pollutants, lowering air temperature, and reducing energy consumption, which in turn reduces emissions from power plants, and emitting volatile organic matter (ozone). In Guttenberg it is estimated that trees remove 2,351.56 lbs of air pollution (ozone (O₃), particulate matter less than 10 microns (PM₁₀), carbon monoxide (CO), nitrogen dioxide (NO₂), and sulfur dioxide (SO₂)) per year with a net value of \$6,572.81 (Appendix A, Table 3).

Annual Carbon Benefits

Carbon sequestration and storage reduce the amount of carbon in the atmosphere, mitigating climate change. In Guttenberg trees sequester about 384,399.51 lbs of carbon a year with an associated value of \$2,883 (Appendix A, Table 5). In addition, the trees store 6,024,225.13 lbs of carbon, with a yearly benefit of \$45,181.69 (Appendix A, Table 4).

Annual Aesthetics Benefits

Social benefits of trees are hard to capture. The analysis does have a calculation for this area that includes: aesthetic value, property values, lowered rates of mental illness and crime, city livability and much more. Guttenberg receives \$39,978.95 in annual social benefits from trees (Appendix A, Table 6).

Financial Summary of all Benefits

According to the USDA Forest Service i-Tree STREETS analysis, Guttenberg's trees provide \$143,015.53 of benefits annually. Benefits of individual trees vary based on size, species, health and location, but on average each of the 842 trees in Guttenberg provide approximately \$171.89 annually (Appendix A, Table 7).

Forest Structure

Species Distribution

Guttenberg has over 30 different tree species along city streets and parks (Appendix A, Figure 1). The distribution of trees by genera is as follows:

Maple	306	36.3%
Hackberry	135	16%
Ash	83	9.9%
Oak	60	7.1%
Linden/Basswood	49	5.8%
Cedar	38	4.5%
Walnut	29	3.4%
Birch	21	2.5%
Apple	20	2.4%
Locust	16	1.9%
Spruce	14	1.7%
Pine	12	1.2%
Others	61	7.2%

Age Class

Most of Guttenberg's trees (51%) are greater 18 inches in diameter at 4.5 ft (Appendix A, Figure 2). For age, it is preferred that the highest amounts of trees are in the smallest size category (a downward slope) to prepare for natural mortality and to maintain canopy cover. Guttenberg's size curve is on the larger side, indicating an older than average stand.

Condition: Wood and Foliage

Both wood condition and leaf condition are good indicators of the overall health of the urban forest. The foliage condition results for Guttenberg indicate that 97% of the trees are in fair to good health, with only 3% of the foliage in poor health, dead or dying (Appendix A, Figure 3 & Appendix B, Figure 3). Similarly, 92% of Guttenberg's trees are in fair to good health for wood condition (appendix A, Figure 4 & Appendix B, Figure 3). Wood condition that is in poor health, dead or dying is about 8% of the population. This 8% is an estimate of trees that need management follow up.

Management Needs

The following outlines the specific management needs of the street and park trees by number of trees and percent of canopy (Appendix B, Figure 3).

Crown Cleaning	196	23.28%
Crown Raising	10	1.19%
Tree Staking	2	.24%
Tree Removal	71	8.43%

Crown Reduction	4	.48%
Treat ash for EAB	27	3.20%

Canopy Cover

The total canopy with both private and public trees is 41%, 560 acres. The canopy cover included in the Guttenberg inventory includes approximately 21 acres (Appendix A, Figure 4). The City's Canopy goal is to increase canopy by 3%, in 30 years. To achieve this goal it is estimated that 99 trees need to be planted annually.

Land Use and Location

The majority of Guttenberg's city and park trees are in planting strips in single family residential neighborhoods (Appendix A, Figure 6 & Appendix A, Figure7). The following describes the land use and locations for the street and park trees.

Land Use

Single family residential	49.29%
Park/vacant/other	47.62%
Industrial/Large commercial	0.95%
Small commercial	1.07%
Multifamily residential	1.07%

Location

Planting strip	41.21%
Other maintained locations	45.37%
Cutout (surrounded by pavement)	.59%
Front yard	12.83%

Recommendations

Risk Management

Hazardous trees can be a significant threat to both people and property. Trees that are dead or dying, or that have large issues such as trunk cracks longer than 18 inches should be removed. Broken branches and branches that interfere with motorist's vision of pedestrians, vehicles, traffic signs and signals, etc should be removed.

Hazardous trees

Guttenberg has 3 critical concern trees that need immediate removal. These trees can be seen on the Location of Trees with Recommended Maintenance map (Appendix B, Figure 4). It is recommended to start with the large diameter critical concern trees first. There are 2 trees over 24 inches in diameter at 4.5 ft that should be addressed immediately. Please refer to the six year maintenance plan at the end of this section. After all of the critical concern trees are addressed, there should be follow up on the trees marked as needing maintenance. There are a total of 308 trees with these needs.

Poor tree species

After the removal of the critical concern trees, ash trees in poor health should be assessed for removal (Appendix B, Figure 3 & Appendix B, Figure 4). Of the 71 removals, 54 are ash trees. There are a total of 83 ash trees, and 53 of those have signs and symptoms that have been associated with EAB. In addition, there are 15 trees that are in poor health. [*City ownership of the trees recommended for removal should be verified prior to any removal*](#)

Pruning Cycle

Proper pruning can extend the life and good health of trees, as well as reduce public safety issues. In the Management Needs section of the Findings there are four main maintenance issues to be addressed: routine pruning, crown cleaning, crown raising, and crown reduction. Crown cleaning removes dead, diseased, and damaged limbs. Crown raising is the removal of lower branches that are 2 inches in diameter or larger in the case of providing clearance for pedestrians or vehicles. Crown reduction is removing individual limbs from structures or utility wires. It is recommended that all trees be pruned on a routine schedule every five to seven years. Please refer to the six year maintenance plan for further information.

Planting

Most of the planting over the next 5 years will replace the trees that are removed. It is recommended to plant 1.2 trees for every tree removed, since survival rates will not be 100%. Please refer to the six year maintenance plan at the end of this section. It is not essential that the new trees be planted in the same location of the trees being removed. However, maintaining the same number of trees helps ensure continuation of the benefits of the existing forest in Guttenberg.

It is important to plant a diverse mix of species in the urban forest to maintain canopy health, since most insects and diseases target a genus (ash) or species (green ash) of trees. Current diversity recommendations advise that a genus (i.e. maple, oak) not make up more than 20% of the urban forest and a single species (i.e. silver maple, sugar maple, white oak, bur oak) not make up more than 10% of the total urban forest. Presently, the forest is heavily planted with maple (36.3%) (Appendix A, Figure 1). Maples should not be planted until this percentage can be lowered. Also, ash trees have not been recommended since 2002, due to the threat of EAB. Other species to avoid because they are public nuisances include: cottonwood, poplar, box elder, Chinese elm, evergreen, willow or black walnut, as outlined in section 151.02 of the city ordinance (Appendix C). All trees planted must meet the restrictions in city ordinance 151.02 (Appendix C).

Continual Monitoring

Due to the threat of EAB, it is important to continuously check the health of ash trees. It is recommended that ash trees be checked with a visual survey every year for tree decline and for the following signs and symptoms: canopy dieback, epicormic shoots, bark splitting, D-shaped borer exit holes, and wood pecker damage.

Six Year Maintenance Plan with No Additional Funding

Year 1

Removal: 3 critical concern trees and 6 ash in poor health

Planting and Replacement: 10 trees to be planted in open locations

Young Tree Pruning & Maintenance:

Visual Survey for signs and symptoms of EAB

Year 2

Removal: 9 ash trees with poor health

*Or saving for ash tree treatment and/or future ash removal

Planting and Replacement: 4 trees in open locations from year one removals

Young Tree Pruning & Maintenance:

Routine trimming: Contract to trim 1/3 of the city trees

Visual Survey for signs and symptoms of EAB

Year 3

Removal: 9 trees - removal of any new critical concern trees and ash in poor health

*Or saving for ash tree treatment and/or future ash removal

Planting and Replacement: 10 trees to be planted in open locations and locations from previous removals

Young Tree Pruning & Maintenance:

Visual Survey for signs and symptoms of EAB

Year 4

Removal: 9 trees - removal of any new critical concern trees and ash in poor health

*Or saving for ash tree treatment and/or future ash removal

Planting and Replacement: 4 trees in open locations from previous removals

Routine trimming: Contract to trim 1/3 of the city trees

Young Tree Pruning & Maintenance:

Visual Survey for signs and symptoms of EAB

Year 5

Removal: 9 trees - removal of any new critical concern trees and ash in poor health

*Or saving for ash tree treatment and/or future ash removal

Planting and Replacement: 10 trees to be planted in open locations and locations from previous removals

Young Tree Pruning & Maintenance:

Visual Survey for signs and symptoms of EAB

Year 6

Removal: 9 trees - removal of any new critical concern trees and ash in poor health

*Or saving for ash tree treatment and/or future ash removal

Planting and Replacement: 4 trees in open locations from previous removals

Routine trimming: Contract to trim 1/3 of the city trees

Young Tree Pruning & Maintenance:

Visual Survey for signs and symptoms of EAB

*Reduction of ash over 6 years: Approximately 51 ash trees removed (approximately 61% of ash). It will take approximately 11 years to remove all ash with the current budget. EAB could potentially kill all ash within 4 to 15 years of its arrival.

**To remove all ash trees within 6 years, the budget would need to be increased to \$10,500 a year.

Emerald Ash Borer Plan

Ash Tree Removal

Tree removal will be prioritized with dead, dying, hazardous trees to be removed first (Appendix B, Figure 4). Next will be all ash in poor condition and displaying signs and symptoms of EAB (Appendix B, Figure 2 & Appendix B, Figure 3). **City ownership of the tree recommended for removal should be verified prior to any removal**

Treatment of Ash Trees

Chemical treatment can be effective tool for communities to spread removal costs out over several years while allowing trees to continue to provide benefits. However, treatment is not recommended if EAB is more than 15 miles away from the community. For more information on the cost of treatment strategies visit <http://extension.entm.purdue.edu/treecomputer/>

EAB Quarantines

EAB is an extremely destructive plant pest and it is responsible for the death and decline of millions of ash trees. Ash in both forested and urban settings constitute a significant portion of the canopy cover in the United States. Current tools to detect, control, suppress and eradicate this pest are not as robust as the USDA would desire. In order to stay ahead of this hard to detect beetle, the USDA is attempting to contain the beetle before it spreads beyond its known positions by regulating articles.

A regulated article under the USDA's quarantine includes any of the following items:

- emerald ash borer
- firewood of all hardwood species (for example ash, oak, maple and hickory)
- nursery stock and green lumber of ash
- any other ash material, whether living, dead, cut or fallen, including logs, stumps, roots, branches, as well as composted and not composted chips of the genus ash (Mountain ash is not included)

In addition, any other article, product or means of conveyance not listed above may be designated as a regulated article if a USDA inspector determines that it presents a risk of spreading EAB once a quarantine is in effect for your county.

Wood Disposal

A very important aspect of planning is determining how wood infested with EAB will be handled, keeping in mind that quarantines will restrict its movement. Consider who will cut and haul the dead and dying trees? Is there an accessible, secured site big enough to store and sort the hundreds of trees and the associated brush and chips? How will wood be disposed of or utilized? Do you have equipment capable of handling the amount and size of ash trees your tree inventory has identified? Once your county is under quarantine for EAB, contact USDA-APHIS-PPQ at 515-251-4083 or visit the website http://www.aphis.usda.gov/plant_health/plant_pest_info/emerald_ash_b/regulatory.shtml. Wood waste can be disposed of as you normally would if your county is not part of a quarantine.

Canopy Replacement

As budget permits, all removed trees will be replaced. All trees will meet the restrictions in city ordinance 151.02 (Appendix C). The new plantings will be a diverse mix and will not include ash, maple, cottonwood, poplar, box elder, Chinese elm, evergreen, willow or black walnut.

Postponed Work

While finances, staffing and equipment are focused on the management of ash, usual services may be delayed. Tree removal requests on genera other than ash will be prioritized by hazardous or emergency situations only.

Monitoring

It is recommended that ash trees be checked with a visual survey every year for tree death and for the following signs and symptoms: canopy dieback, epicormic shoots, bark splitting, D-shaped borer exit holes, and wood pecker damage.

Private Ash Trees

It is strongly recommended that private property owners start removing ash trees on their property upon arrival of EAB if preventative treatments are not being used. City Code 151.06 states:

151.06 INSPECTION AND REMOVAL. The Council shall inspect or cause to be inspected any trees or shrubs on any City property (including the strip between the curb and the lot line of private property) reported or suspected to be dead, diseased or damaged. The Council may cause such conditions to be corrected by treatment or removal. The Council may also order the removal of any trees on the streets of the City which interfere with the making of improvements or with travel thereon. *(Ord. 555-12 – May 12 Supp.)*

Budget

Current Budget

Total \$42,000 over 6 years (\$7,000/year)

FY 2019 Budget

Removal: \$5,400

*Or saving for ash tree treatment and/or future ash removal

Planting: \$1000

Watering & Maintenance: \$600

FY 2020 Budget

Removal: \$5,400

*Or saving for ash tree treatment and/or future ash removal

Planting: \$400

Routine trimming: \$600

Watering & Maintenance: \$600

FY 2021 Budget

Removal: \$5,400

*Or saving for ash tree treatment and/or future ash removal

Planting: \$1000

Watering & Maintenance: \$600

FY 2022 Budget

Removal: \$5,400

*Or saving for ash tree treatment and/or future ash removal

Planting: \$400

Routine trimming: \$600

Watering & Maintenance: \$600

FY 2023 Budget

Removal: \$5,400

*Or saving for ash tree treatment and/or future ash removal

Planting: \$1000

Watering & Maintenance: \$600

FY 2024 Budget

Removal: \$5,400

*Or saving for ash tree treatment and/or future ash removal

Planting: \$400

Routine trimming: \$600

Watering & Maintenance: \$600

***Reduction of ash over 6 years: approximately 51 ash trees removed (approximately 61% of ash). It will take approximately 11 years to remove all ash with the current budget.**

Purposed Budget Increase

EAB could potentially kill all ash trees in Guttenberg within 4 years of its arrival. To remove all ash trees within 6 years the budget would need to be increased to \$10,500 a year. Additionally, it is recommended that Guttenberg apply for grants to fund replacement trees. Utility Company grants are usually between \$500 and \$10,000 for community-based, tree-planting projects that include parks, gateways, cemeteries, nature trails, libraries, nursing homes, and schools.

Another option being considered by many communities is treating a number of selected trees, either to maintain those trees in the landscape or to delay their removal – to spread out the costs and number of trees needing removed all at once. Trunk injection is administered every two years for the life of the tree. If treatment is discontinued, the tree dies. For instance, in this treatment scenario, the average ash diameter is 20 inches and at \$12 per inch, about 14 trees could be treated alternate years (every other year treatment). This would be 27 trees selected for treatment, and Guttenberg would still need to find \$5,400 for removal. Alternatively, if there are 27 treatable trees, it would cost approximately \$6,480 every two years for treatment and leave \$520 for removal. These are alternatives to straight removal of ash trees. However, whether or not the treatment option is

selected, there will be an increased cost of dealing with ash trees if EAB is found in Guttenberg. It is suggested to consider increasing the budget to plan for this.

Works Cited

Census Bureau. 2010. <http://censtats.census.gov/data/IA/1601964290.pdf> (April, 2013)

USDA Forest Service, et al. 2006. i-Tree Software Suite v1.0 User's Manual. Pp. 27-40.

McPherson EG, Simpson JR, Peper PJ, Gardner SL, Vargas KE, Ho J, Maco S, Xiao Q. 2005b. City of Charleston, South Carolina, municipal forest resource analysis. Internal Tech Rep. Davis, CA: U.S. Department of Agriculture, Center for Urban Forest Research. p. 57

Nowak, DJ and JF Dwyer. 2007. Understanding the benefits and costs of urban forest ecosystems. In: Kuser, J. (ed.) Urban and Community Forestry in the Northeast. New York: Springer. Pp. 25-46.

Peper, Paula J; McPherson, E Gregory; Simpson, James R; Vargas, Kelaine E; Xiao, Qingfu 2009. Lower Midwest community tree guide: benefits, costs, and strategic planting. Gen. Tech. Rep. PSW-GTR-219. Albany, CA: U.S. Department of Agriculture, Forest Service, Pacific Southwest Research Station. p.115

Appendix A: i-Tree Data

Table 1: Annual Energy Benefits

Annual Energy Benefits of All Trees by Species				12/20/2018					
Species	Total Electricity (MWh)	Electricity (\$)	Total Natural Gas (Therms)	Natural Gas (\$)	Total (\$)	Stand Error	% of Total Trees	% of Total \$	Avg. \$/tree
Northern hackberry	48.39	3,672.48	6,909.47	6,771.28	10,443.76	(N/A)	16.23	26.32	77.36
Norway maple	18.40	1,396.57	2,611.35	2,559.12	3,955.69	(N/A)	11.66	9.97	40.78
Red maple	11.32	859.08	1,504.52	1,474.42	2,333.50	(N/A)	8.17	5.88	34.32
Green ash	16.61	1,260.44	2,183.51	2,139.84	3,400.28	(N/A)	7.81	8.57	52.31
Silver maple	17.79	1,350.39	2,363.55	2,316.28	3,666.67	(N/A)	7.45	9.24	59.14
Black maple	10.44	792.31	1,362.62	1,335.37	2,127.68	(N/A)	5.41	5.36	47.28
American basswood	12.67	961.39	1,816.30	1,779.98	2,741.36	(N/A)	4.81	6.91	68.53
Northern red oak	4.38	332.79	597.49	585.54	918.33	(N/A)	3.97	2.31	27.83
Sugar maple	6.00	455.10	775.50	759.99	1,215.09	(N/A)	3.61	3.06	40.50
Black walnut	6.21	471.10	836.04	819.32	1,290.42	(N/A)	3.49	3.25	44.50
Northern white cedar	4.04	306.63	536.22	525.50	832.13	(N/A)	2.64	2.10	37.82
Apple	1.63	123.78	273.70	268.22	392.00	(N/A)	2.40	0.99	19.60
White ash	3.87	293.64	483.42	473.75	767.39	(N/A)	2.04	1.93	45.14
Eastern red cedar	1.78	135.28	263.10	257.83	393.11	(N/A)	1.92	0.99	24.57
Honeylocust	4.56	345.88	590.42	578.62	924.49	(N/A)	1.80	2.33	61.63
River birch	3.20	242.78	473.41	463.94	706.72	(N/A)	1.44	1.78	58.89
Swamp white oak	0.72	54.56	115.87	113.55	168.11	(N/A)	1.32	0.42	15.28
Broadleaf Deciduous Sma	0.80	60.68	121.33	118.90	179.58	(N/A)	1.08	0.45	19.95
Littleleaf linden	1.22	92.39	158.84	155.66	248.04	(N/A)	1.08	0.63	27.56
Paper birch	1.07	80.89	126.31	123.79	204.68	(N/A)	0.96	0.52	25.58
Others	13.06	991.25	1,810.05	1,773.85	2,765.10		10.70	6.97	31.01
Total	188.13	14,279.40	25,913.01	25,394.75	39,674.15	(N/A)	100.00	100.00	47.69

Table 2: Annual Stormwater Benefits

Annual Stormwater Benefits of All Trees by Species				12/20/2018		
Species	Total Rainfall Interception (Gal)	Total (\$)	Stand. Error	% of Total Trees	% of Total \$	Avg. \$/tree
Northern hackberry	474,984.79	12,872.09	(N/A)	16.23	24.86	95.35
Norway maple	145,024.84	3,930.17	(N/A)	11.66	7.59	40.52
Red maple	83,806.41	2,271.15	(N/A)	8.17	4.39	33.40
Green ash	158,645.68	4,299.30	(N/A)	7.81	8.30	66.14
Silver maple	243,560.66	6,600.49	(N/A)	7.45	12.75	106.46
Black maple	84,150.79	2,280.49	(N/A)	5.41	4.40	50.68
American basswood	163,926.99	4,442.42	(N/A)	4.81	8.58	111.06
Northern red oak	30,925.56	838.08	(N/A)	3.97	1.62	25.40
Sugar maple	45,388.50	1,230.03	(N/A)	3.61	2.38	41.00
Black walnut	57,072.05	1,546.65	(N/A)	3.49	2.99	53.33
Northern white cedar	99,666.85	2,700.97	(N/A)	2.64	5.22	122.77
Apple	7,173.88	194.41	(N/A)	2.40	0.38	9.72
White ash	33,300.31	902.44	(N/A)	2.04	1.74	53.08
Eastern red cedar	26,152.61	708.74	(N/A)	1.92	1.37	44.30
Honeylocust	46,085.82	1,248.93	(N/A)	1.80	2.41	83.26
River birch	31,928.13	865.25	(N/A)	1.44	1.67	72.10
Swamp white oak	3,877.78	105.09	(N/A)	1.32	0.20	9.55
Broadleaf Deciduous Sma	3,322.91	90.05	(N/A)	1.08	0.17	10.01
Littleleaf linden	8,426.48	228.36	(N/A)	1.08	0.44	25.37
Paper birch	6,677.45	180.96	(N/A)	0.96	0.35	22.62
Others	156,302.43	4,235.80		10.70	8.18	48.43
Citywide total	1,910,400.94	51,771.87	(N/A)	100.00	100.00	62.23

Table 3: Annual Air Quality Benefits

Annual Air Quality Benefits of All Trees by Species				12/20/2018															
Species	Deposition O3 (lb)	Deposition NO2 (lb)	Deposition PM10 (lb)	Deposition SO2 (lb)	Total Deposition (\$)	Avoided NO2 (lb)	Avoided PM10 (lb)	Avoided VOC (lb)	Avoided SO2 (lb)	Total Avoided (\$)	BVOC Emissions (lb)	BVOC Emissions (\$)	Total (lb)	Total (\$)	Stand Error	% of Total Trees	Avg. \$/tree		
Northern hackberry	74.81	12.95	37.99	3.35	407.89	233.95	33.86	32.24	219.45	1,450.50	0.00	0.00	648.59	1,858.40	(N/A)	16.23	13.77		
Norway maple	26.40	4.56	13.42	1.17	143.92	88.85	12.87	12.26	83.50	551.29	- 6.47	- 24.27	236.55	670.94	(N/A)	11.66	6.92		
Red maple	18.06	3.08	8.67	0.80	96.86	53.57	7.83	7.48	51.28	334.83	- 6.33	- 23.75	144.43	407.95	(N/A)	8.17	6.00		
Green ash	18.60	2.97	9.19	0.84	99.87	78.49	11.49	10.97	75.27	490.97	0.00	0.00	207.81	590.84	(N/A)	7.81	9.09		
Silver maple	41.42	7.02	20.49	1.84	223.77	84.08	12.29	11.73	80.50	525.59	- 22.21	- 83.28	237.17	666.07	(N/A)	7.45	10.74		
Black maple	19.71	3.36	9.23	0.87	105.04	49.20	7.21	6.88	47.29	308.02	- 6.69	- 25.10	137.05	387.96	(N/A)	5.41	8.62		
American basswood	24.35	4.15	11.60	1.08	130.33	61.32	8.87	8.44	57.46	380.01	- 20.11	- 75.42	157.14	434.92	(N/A)	4.81	10.87		
Northern red oak	5.47	0.94	2.86	0.24	30.06	20.88	3.04	2.90	19.86	130.17	- 7.64	- 28.65	48.57	131.58	(N/A)	3.97	3.99		
Sugar maple	4.81	0.82	2.71	0.21	26.92	28.19	4.14	3.95	27.17	176.68	- 4.04	- 15.14	67.95	188.47	(N/A)	3.61	6.28		
Black walnut	5.91	0.94	3.03	0.27	32.06	29.51	4.31	4.11	28.13	184.14	0.00	0.00	76.21	216.20	(N/A)	3.49	7.46		
Northern white cedar	12.27	2.43	9.68	1.51	79.70	19.09	2.79	2.67	18.30	119.40	- 61.53	- 230.74	7.21	- 31.63	(N/A)	2.64	- 1.44		
Apple	1.91	0.31	0.94	0.09	10.27	8.23	1.17	1.10	7.39	50.15	- 0.01	- 0.04	21.12	60.38	(N/A)	2.40	3.02		
White ash	3.47	0.56	1.82	0.16	18.95	18.04	2.66	2.54	17.52	113.43	0.00	0.00	46.77	132.38	(N/A)	2.04	7.79		
Eastern red cedar	5.49	1.09	4.33	0.68	35.67	8.65	1.25	1.19	8.07	53.51	- 14.45	- 54.20	16.29	34.98	(N/A)	1.92	2.19		
Honeylocust	8.83	1.46	4.06	0.40	46.70	21.42	3.14	3.00	20.63	134.20	- 6.77	- 25.40	56.16	155.51	(N/A)	1.80	10.37		
River birch	6.68	1.15	3.26	0.30	36.01	15.61	2.25	2.14	14.51	96.46	- 1.55	- 5.81	44.35	126.66	(N/A)	1.44	10.55		
Swamp white oak	0.35	0.06	0.24	0.02	2.10	3.59	0.51	0.49	3.26	22.00	- 0.12	- 0.46	8.40	23.64	(N/A)	1.32	2.15		
Broadleaf Deciduous Small	0.99	0.16	0.47	0.04	5.26	3.92	0.56	0.54	3.62	24.17	- 0.01	- 0.02	10.30	29.42	(N/A)	1.08	3.27		
Littleleaf linden	1.10	0.19	0.60	0.05	6.10	5.75	0.84	0.80	5.53	36.01	- 0.59	- 2.23	14.27	39.89	(N/A)	1.08	4.43		
Paper birch	0.46	0.07	0.29	0.02	2.66	4.91	0.73	0.70	4.83	31.05	0.00	0.00	12.02	33.71	(N/A)	0.96	4.21		
Others	23.29	4.03	13.32	1.56	132.30	62.51	9.09	8.66	59.18	389.01	- 28.46	- 106.74	153.19	414.57		10.70	5.55		
Citywide Total	304.38	52.31	158.18	15.48	1,672.45	899.78	130.90	124.78	852.76	5,601.62	- 187.00	- 701.25	2,351.56	6,572.81	(N/A)	100.00	7.90		

Table 4: Annual Carbon Stored

Stored CO2 Benefits of All Trees by Species			12/20/2018			
Species	Total stored CO2 (lbs)	Total (\$)	Stand. Error	% of Total Trees	% of Total \$	Avg. \$/tree
Northern hackberry	1,123,003.18	8,422.52	(N/A)	16.23	18.64	62.39
Norway maple	437,254.51	3,279.41	(N/A)	11.66	7.26	33.81
Red maple	202,330.73	1,517.48	(N/A)	8.17	3.36	22.32
Green ash	613,809.57	4,603.57	(N/A)	7.81	10.19	70.82
Silver maple	958,799.91	7,191.00	(N/A)	7.45	15.92	115.98
Black maple	214,627.25	1,609.70	(N/A)	5.41	3.56	35.77
American basswood	916,431.05	6,873.23	(N/A)	4.81	15.21	171.83
Northern red oak	100,682.74	755.12	(N/A)	3.97	1.67	22.88
Sugar maple	138,372.07	1,037.79	(N/A)	3.61	2.30	34.59
Black walnut	192,540.34	1,444.05	(N/A)	3.49	3.20	49.79
Northern white cedar	160,638.98	1,204.79	(N/A)	2.64	2.67	54.76
Apple	32,578.09	244.34	(N/A)	2.40	0.54	12.22
White ash	83,220.08	624.15	(N/A)	2.04	1.38	36.71
Eastern red cedar	17,633.12	132.25	(N/A)	1.92	0.29	8.27
Honeylocust	113,163.76	848.73	(N/A)	1.80	1.88	56.58
River birch	109,517.13	821.38	(N/A)	1.44	1.82	68.45
Swamp white oak	7,091.46	53.19	(N/A)	1.32	0.12	4.84
Broadleaf Deciduous Small	15,582.10	116.87	(N/A)	1.08	0.26	12.99
Littleleaf linden	24,846.41	186.35	(N/A)	1.08	0.41	20.71
Paper birch	15,931.65	119.49	(N/A)	0.96	0.26	14.94
Others	546,170.99	4,096.28		10.70	9.07	52.28
Citywide total	6,024,225.13	45,181.69	(N/A)	100.00	100.00	54.30

Table 5: Annual Carbon Sequestered

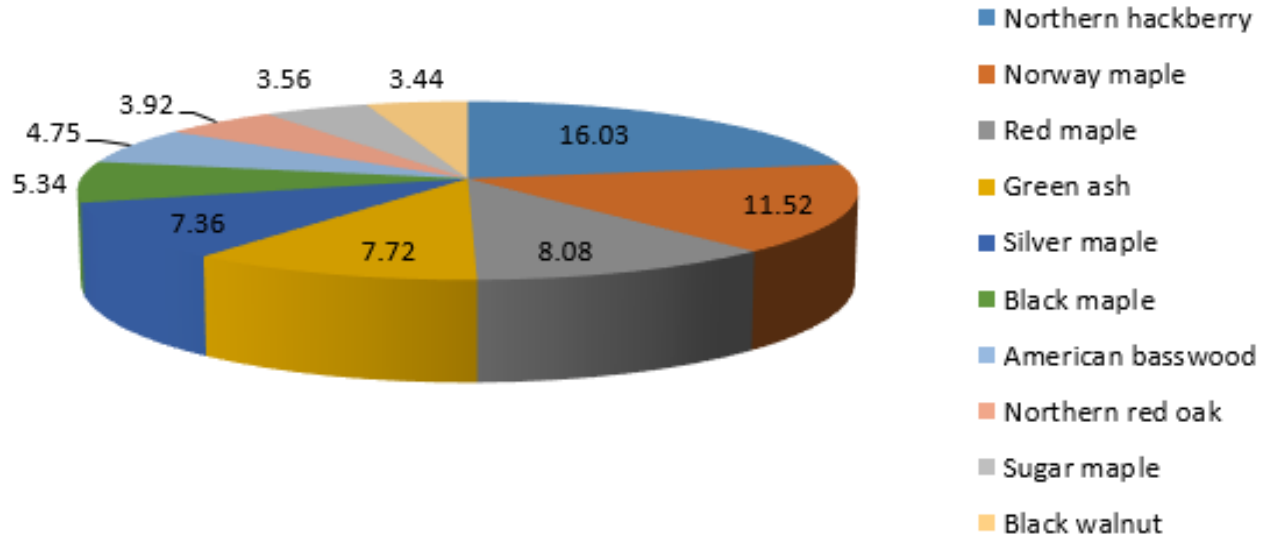
Annual CO2 Benefits of All Trees by Species			12/20/2018										
	Sequestered (lb)	Sequestered (\$)	Decomposition Release (lb)	Maintenance Release (lb)	Total Release (\$)	Avoided (lb)	Avoided (\$)	Net Total (lb)	Total (\$)	Stand. Error	% of Total Trees	% of Total \$	Avg. \$/tree
Northern hackberry	62,486.85	468.65	- 5,390.42	- 456.69	- 43.85	81,160.72	608.71	137,800.46	1,033.50	(N/A)	16.23	20.60	7.66
Norway maple	30,870.77	231.53	- 2,107.43	- 182.91	- 17.18	30,863.76	231.48	59,444.19	445.83	(N/A)	11.66	8.89	4.60
Red maple	23,704.43	177.78	- 971.56	- 104.52	- 8.07	18,985.39	142.39	41,613.74	312.10	(N/A)	8.17	6.22	4.59
Green ash	36,435.59	273.27	- 2,946.29	- 164.97	- 23.33	27,855.43	208.92	61,179.77	458.85	(N/A)	7.81	9.14	7.06
Silver maple	72,508.21	543.81	- 4,605.25	- 195.78	- 36.01	29,843.36	223.83	97,550.54	731.63	(N/A)	7.45	14.58	11.80
Black maple	20,759.04	155.69	- 1,030.21	- 92.43	- 8.42	17,509.93	131.32	37,146.33	278.60	(N/A)	5.41	5.55	6.19
American basswood	49,670.72	372.53	- 4,398.95	- 153.27	- 34.14	21,246.41	159.35	66,364.91	497.74	(N/A)	4.81	9.92	12.44
Northern red oak	6,810.17	51.08	- 483.40	- 51.48	- 4.01	7,354.55	55.16	13,629.84	102.22	(N/A)	3.97	2.04	3.10
Sugar maple	10,114.79	75.86	- 664.89	- 58.70	- 5.43	10,057.58	75.43	19,448.80	145.87	(N/A)	3.61	2.91	4.86
Black walnut	14,374.73	107.81	- 924.19	- 63.18	- 7.41	10,411.12	78.08	23,798.47	178.49	(N/A)	3.49	3.56	6.15
Northern white cedar	955.52	7.17	- 771.07	- 99.84	- 6.53	6,776.46	50.82	6,861.07	51.46	(N/A)	2.64	1.03	2.34
Apple	3,038.22	22.79	- 156.42	- 25.35	- 1.36	2,735.51	20.52	5,591.96	41.94	(N/A)	2.40	0.84	2.10
White ash	9,059.61	67.95	- 399.53	- 32.76	- 3.24	6,489.37	48.67	15,116.69	113.38	(N/A)	2.04	2.26	6.67
Eastern red cedar	171.40	1.29	- 84.64	- 31.20	- 0.87	2,989.59	22.42	3,045.16	22.84	(N/A)	1.92	0.46	1.43
Honeylocust	10,115.73	75.87	- 543.19	- 34.71	- 4.33	7,643.81	57.33	17,181.64	128.86	(N/A)	1.80	2.57	8.59
River birch	4,909.56	36.82	- 525.68	- 33.54	- 4.19	5,365.35	40.24	9,715.69	72.87	(N/A)	1.44	1.45	6.07
Swamp white oak	1,551.17	11.63	- 35.60	- 8.78	- 0.33	1,205.75	9.04	2,712.55	20.34	(N/A)	1.32	0.41	1.85
Broadleaf Deciduous Sma	902.95	6.77	- 74.93	- 11.51	- 0.65	1,341.05	10.06	2,157.57	16.18	(N/A)	1.08	0.32	1.80
Littleleaf linden	3,370.59	25.28	- 119.90	- 13.65	- 1.00	2,041.69	15.31	5,278.73	39.59	(N/A)	1.08	0.79	4.40
Paper birch	2,069.51	15.52	- 76.55	- 9.95	- 0.65	1,787.66	13.41	3,770.67	28.28	(N/A)	0.96	0.56	3.54
Others	20,519.94	153.90	- 2,622.09	- 178.82	- 21.01	21,906.41	164.30	39,625.45	297.19		10.70	5.92	3.63
Citywide Total	384,399.51	2,883.00	- 28,932.17	- 2,004.03	- 232.02	315,570.93	2,366.78	669,034.24	5,017.76	(N/A)	100.00	100.00	6.03

Table 6: Annual Social and Aesthetic Benefits

Annual Aesthetic/Other Benefit of All Trees by Species			12/20/2018		
Species	Total (\$)	Stand. Error	% of Total Trees	% of Total \$	Avg. \$/tree
Northern hackberry	8,155.75	(N/A)	16.23	20.40	60.41
Norway maple	3,092.04	(N/A)	11.66	7.73	31.88
Red maple	3,202.55	(N/A)	8.17	8.01	47.10
Green ash	3,248.21	(N/A)	7.81	8.12	49.97
Silver maple	5,773.67	(N/A)	7.45	14.44	93.12
Black maple	2,673.23	(N/A)	5.41	6.69	59.41
American basswood	3,354.49	(N/A)	4.81	8.39	83.86
Northern red oak	609.30	(N/A)	3.97	1.52	18.46
Sugar maple	1,198.60	(N/A)	3.61	3.00	39.95
Black walnut	1,336.89	(N/A)	3.49	3.34	46.10
Northern white cedar	125.89	(N/A)	2.64	0.31	5.72
Apple	175.84	(N/A)	2.40	0.44	8.79
White ash	1,118.88	(N/A)	2.04	2.80	65.82
Eastern red cedar	54.76	(N/A)	1.92	0.14	3.42
Honeylocust	2,418.60	(N/A)	1.80	6.05	161.24
River birch	449.54	(N/A)	1.44	1.12	37.46
Swamp white oak	191.31	(N/A)	1.32	0.48	17.39
Broadleaf Deciduous Small	50.27	(N/A)	1.08	0.13	5.59
Littleleaf linden	377.51	(N/A)	1.08	0.94	41.95
Paper birch	237.24	(N/A)	0.96	0.59	29.65
Others	2,134.39		10.70	5.34	24.95
Citywide Total	39,978.95	(N/A)	100.00	100.00	48.05

Table 7: Summary of Benefits in Dollars

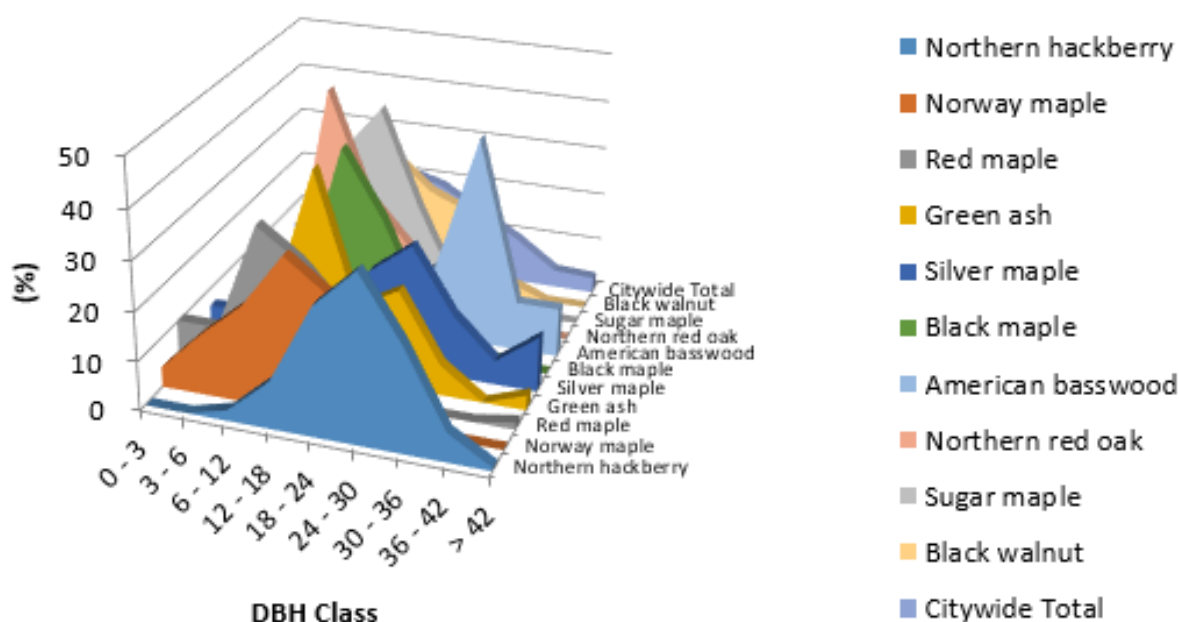
Average Annual Benefits of All Tree by Species (\$/tree)				12/20/2018		
Species	Energy	CO2	Air Quality	Stormwater	Aesthetic/Other	Stand. Error
Northern hackberry	77.36	7.66	13.77	95.35	60.41	(N/A)
Norway maple	40.78	4.60	6.92	40.52	31.88	(N/A)
Red maple	34.32	4.59	6.00	33.40	47.10	(N/A)
Green ash	52.31	7.06	9.09	66.14	49.97	(N/A)
Silver maple	59.14	11.80	10.74	106.46	93.12	(N/A)
Black maple	47.28	6.19	8.62	50.68	59.41	(N/A)
American basswood	68.53	12.44	10.87	111.06	83.86	(N/A)
Northern red oak	27.83	3.10	3.99	25.40	18.46	(N/A)
Sugar maple	40.50	4.86	6.28	41.00	39.95	(N/A)
Black walnut	44.50	6.15	7.46	53.33	46.10	(N/A)
Northern white cedar	37.82	2.34	- 1.44	122.77	5.72	(N/A)
Apple	19.60	2.10	3.02	9.72	8.79	(N/A)
White ash	45.14	6.67	7.79	53.08	65.82	(N/A)
Eastern red cedar	24.57	1.43	2.19	44.30	3.42	(N/A)
Honeylocust	61.63	8.59	10.37	83.26	161.24	(N/A)
River birch	58.89	6.07	10.55	72.10	37.46	(N/A)
Swamp white oak	15.28	1.85	2.15	9.55	17.39	(N/A)
Broadleaf Deciduous Small	19.95	1.80	3.27	10.01	5.59	(N/A)
Littleleaf linden	27.56	4.40	4.43	25.37	41.95	(N/A)
Paper birch	25.58	3.54	4.21	22.62	29.65	(N/A)
Others	33.92	3.63	5.55	48.43	24.95	
Citywide Total	47.69	6.03	7.90	62.23	48.05	(N/A)



Species Distribution of All Trees for 12/20/2018	
Species	Percent
Northern hackberry	16.03
Norway maple	11.52
Red maple	8.08
Green ash	7.72
Silver maple	7.36
Black maple	5.34
American basswood	4.75
Northern red oak	3.92
Sugar maple	3.56
Black walnut	3.44
Other Species	28.27

Figure 1: Species Distribution

Relative Age Distribution of Top 10 All Tree Species (%)



Relative Age Distribution of Top 10 All Tree Species (%)				DBH class (in)		12/20/2018				
Species	0 - 3	3 - 6	6 - 12	12 - 18	18 - 24	24 - 30	30 - 36	36 - 42	> 42	
Northern hackberry	0.00	0.00	2.22	9.63	25.93	34.07	21.48	5.93	0.74	
Norway maple	4.12	12.37	19.59	30.93	24.74	7.22	1.03	0.00	0.00	
Red maple	10.29	10.29	32.35	26.47	17.65	1.47	0.00	0.00	1.47	
Green ash	0.00	0.00	13.85	41.54	15.38	20.00	6.15	0.00	3.08	
Silver maple	6.45	6.45	4.84	8.06	19.35	25.81	12.90	4.84	11.29	
Black maple	0.00	8.89	11.11	40.00	26.67	8.89	4.44	0.00	0.00	
American basswood	5.00	0.00	2.50	7.50	7.50	15.00	42.50	10.00	10.00	
Northern red oak	9.09	3.03	45.45	24.24	15.15	3.03	0.00	0.00	0.00	
Sugar maple	0.00	3.33	30.00	40.00	20.00	3.33	3.33	0.00	0.00	
Black walnut	0.00	6.90	24.14	27.59	20.69	17.24	3.45	0.00	0.00	
Citywide Total	5.34	5.46	17.22	21.26	19.00	14.13	9.50	3.68	3.21	

Figure 2: Relative Age Class

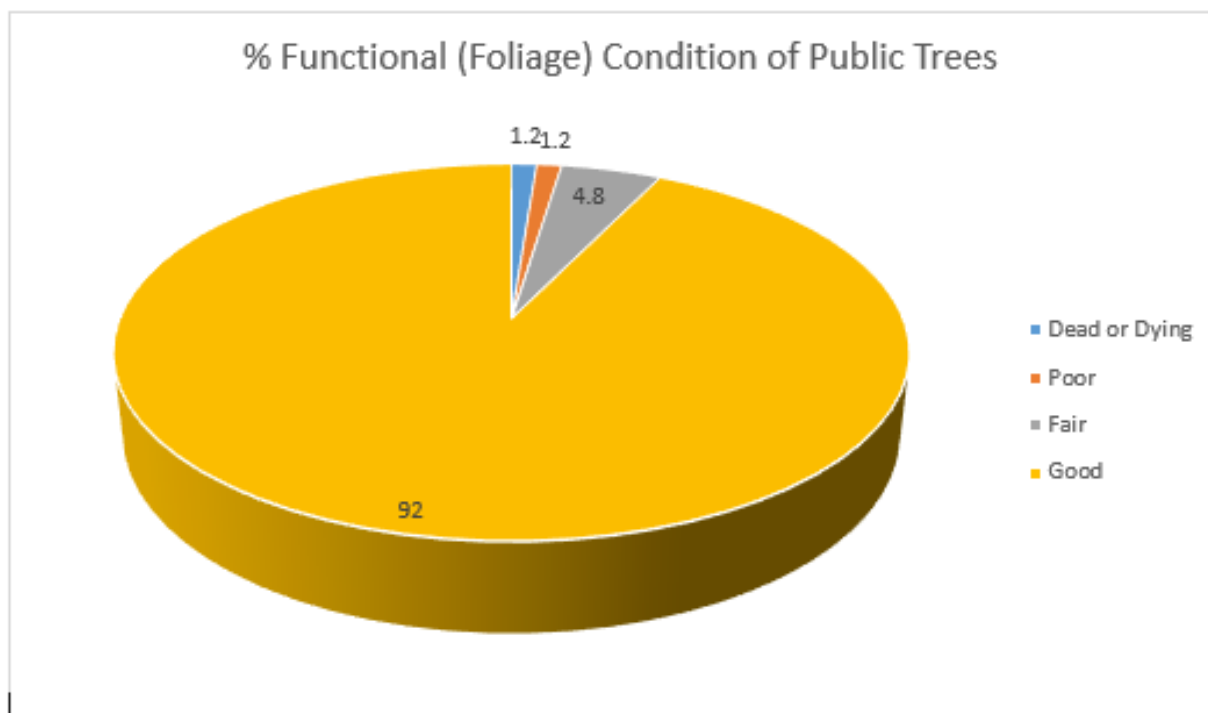


Figure 3: Foliage Condition

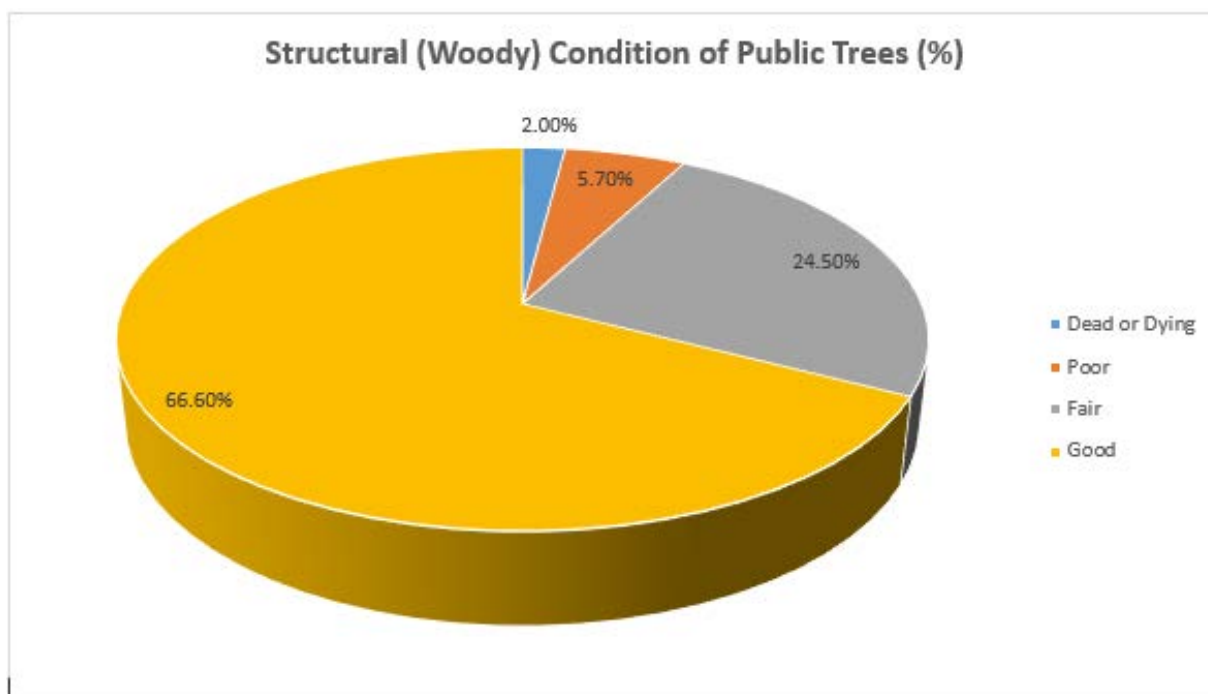
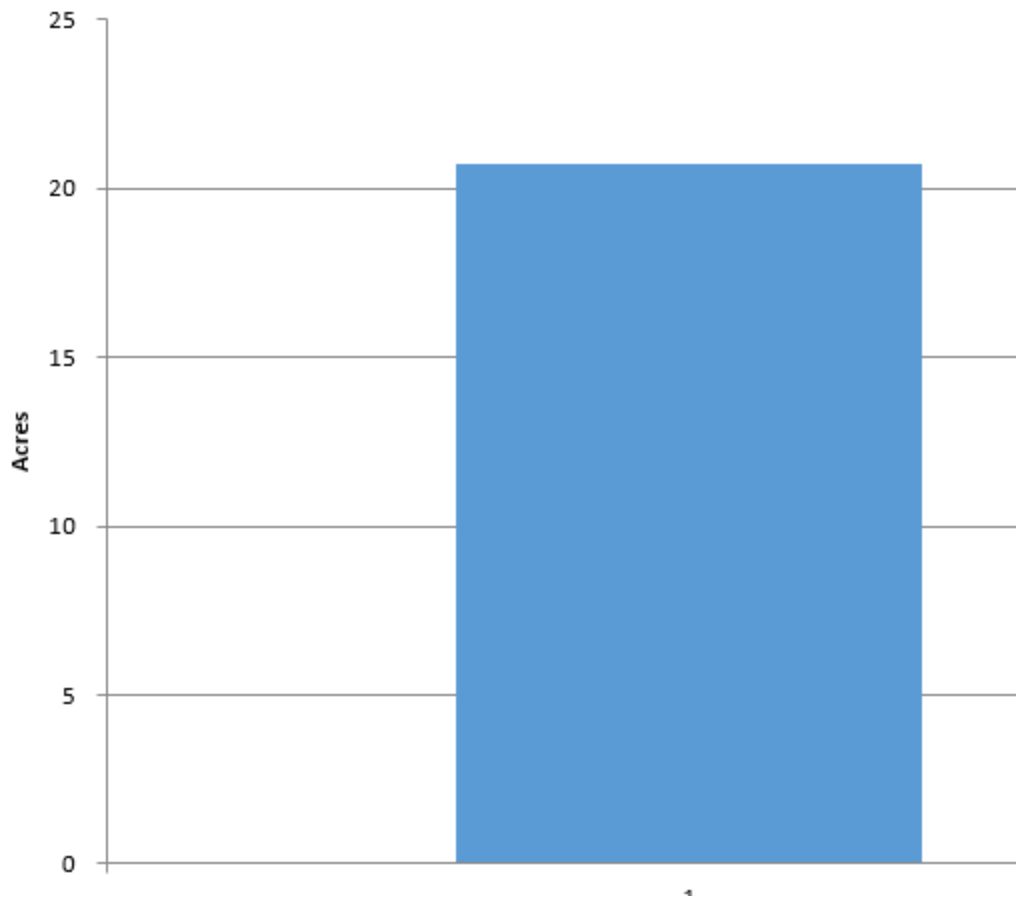


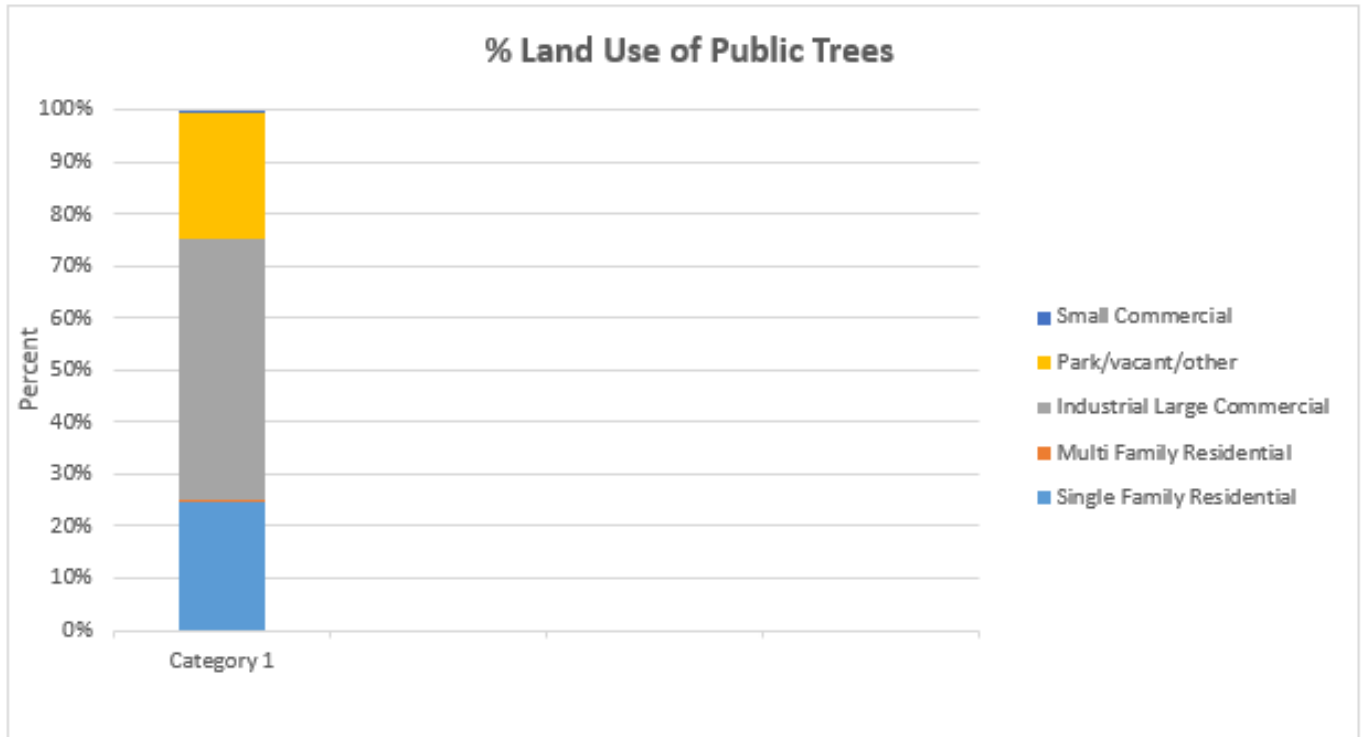
Figure 4: Wood Condition

Canopy Cover of All Trees (Acres)



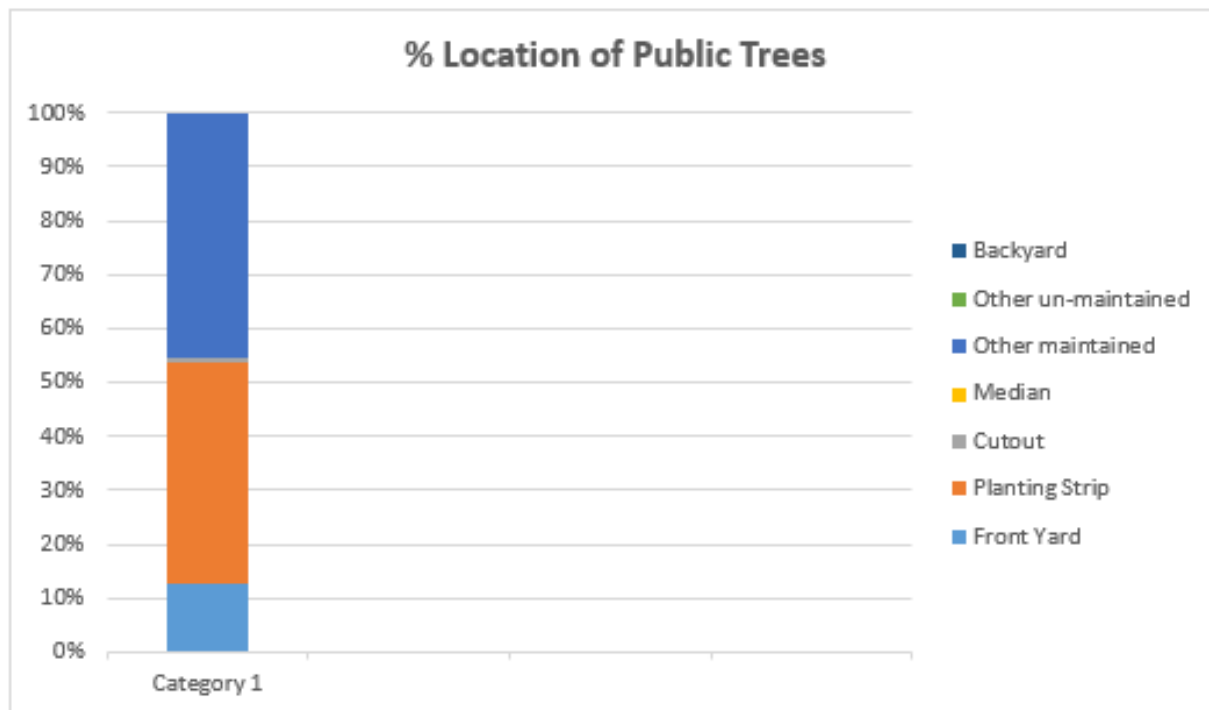
Canopy Cover of All Trees (Acres)		12/20/2018
Zone	Acres	% of Total Canopy
1	20.74	3.70
Citywide Total	560.00	100.00

Figure 5: Canopy Cover in Acres



Land Use of All Trees by Zone				
Citywide 12/20/2018	Single family residential	415	(N/A)	49.29
	Multi-family residential	9	(N/A)	1.07
	Industrial/Large commercial	8	(N/A)	0.95
	Park/vacant/other	401	(N/A)	47.62
	Small commercial	9	(N/A)	1.07
	Total	842	(N/A)	100.00

Figure 6: Land Use of city/park trees



Site Type of All Trees by Zone

Citywide	Front yard	108 (N/A)	12.83
	Planting strip	347 (N/A)	41.21
	Cutout	5 (N/A)	0.59
	Median	0 (N/A)	0.00
	Other maintained locations	382 (N/A)	45.37
	Other un-maintained locations	0 (N/A)	0.00
	Backyard	0 (N/A)	0.00
	Total	842 (N/A)	100.00

Figure 7: Location of city/park trees

Appendix B: ArcGIS Mapping

Figure 1a:

Location of Ash Trees
2018 Community Tree Inventory
Guttenberg, IA



Figure 1b:

**Location of Ash Trees
2018 Community Tree Inventory
Guttenberg, IA**



Figure 2a:

Location of EAB Symptoms
2018 Community Tree Inventory
Guttenberg, IA



Figure 2b:

**Location of EAB Symptoms
2018 Community Tree Inventory
Guttenberg, IA**



Figure 3a:

**Location of Poor Condition Trees
2018 Community Tree Inventory
Guttenberg, IA**



Figure 3b:

Location of Poor Condition Trees
2018 Community Tree Inventory
Guttenberg, IA



Figure 4a:

Location of Trees with Recommended Maintenance
2018 Community Tree Inventory
Guttenberg, IA



Figure 4b:

Location of Trees with Recommended Maintenance
2018 Community Tree Inventory
Guttenberg, IA

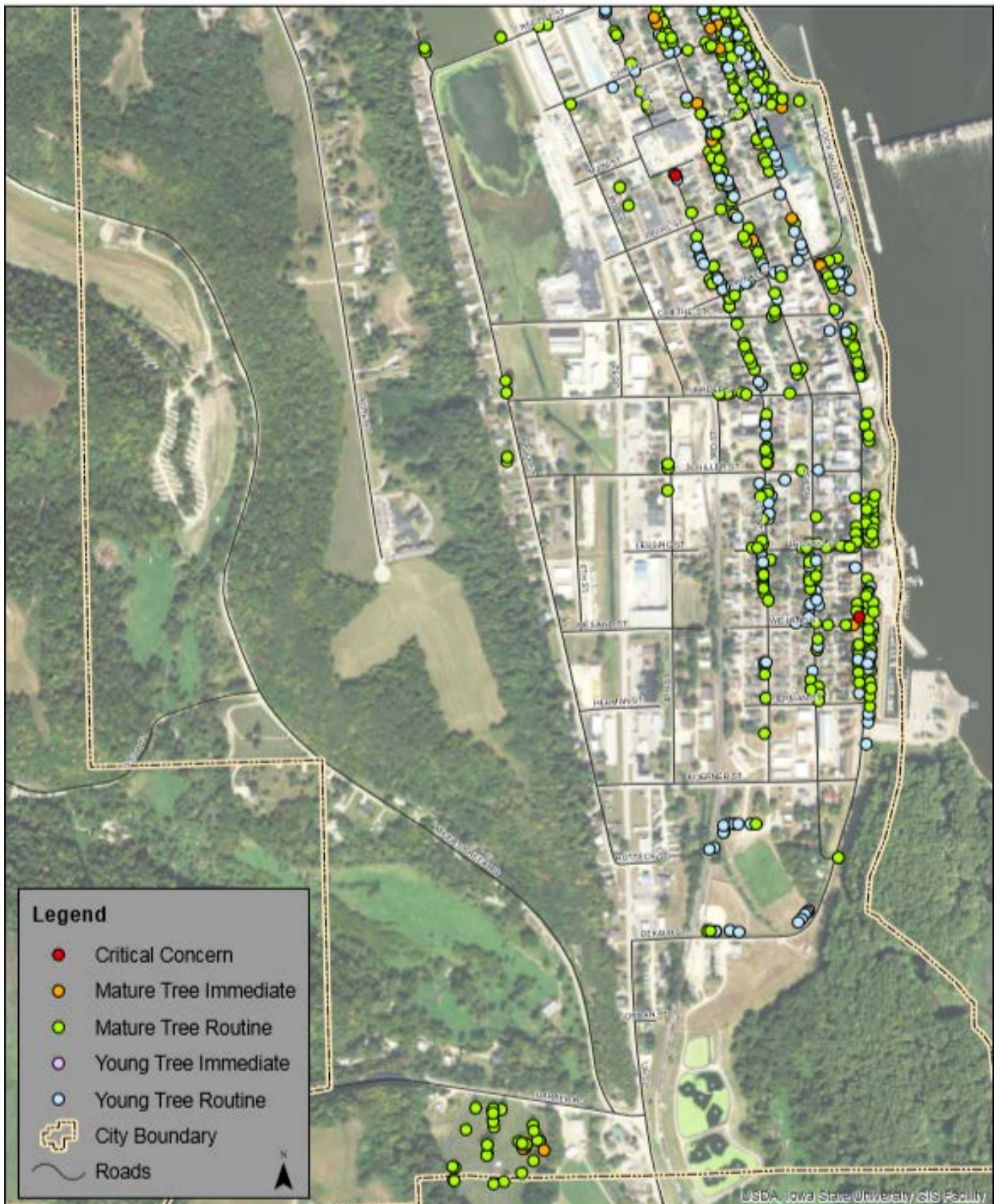


Figure 5a:

Maintenance Tasks
2018 Community Tree Inventory
Guttenberg, IA

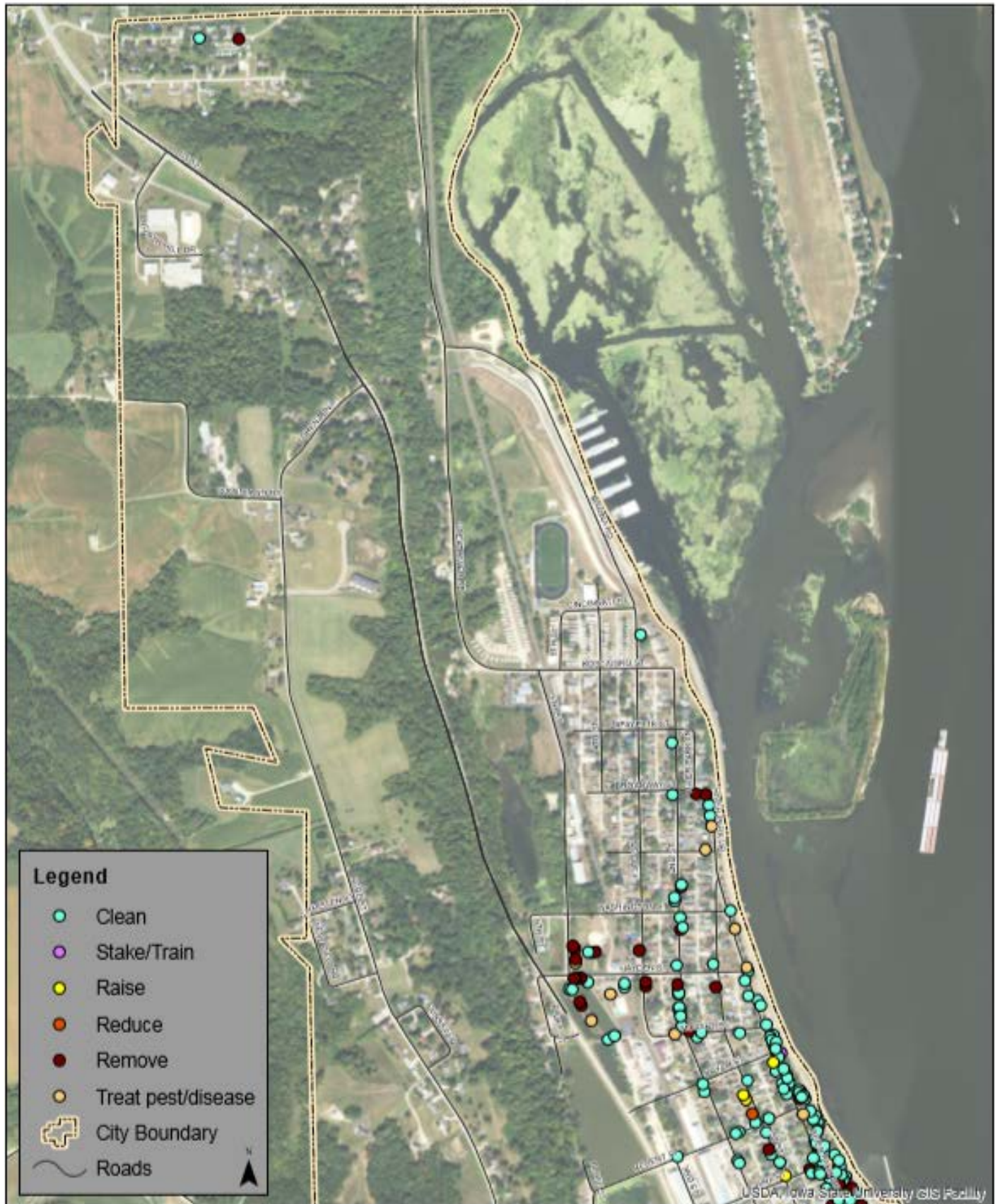


Figure 5b:

Maintenance Tasks
2018 Community Tree Inventory
Guttenberg, IA

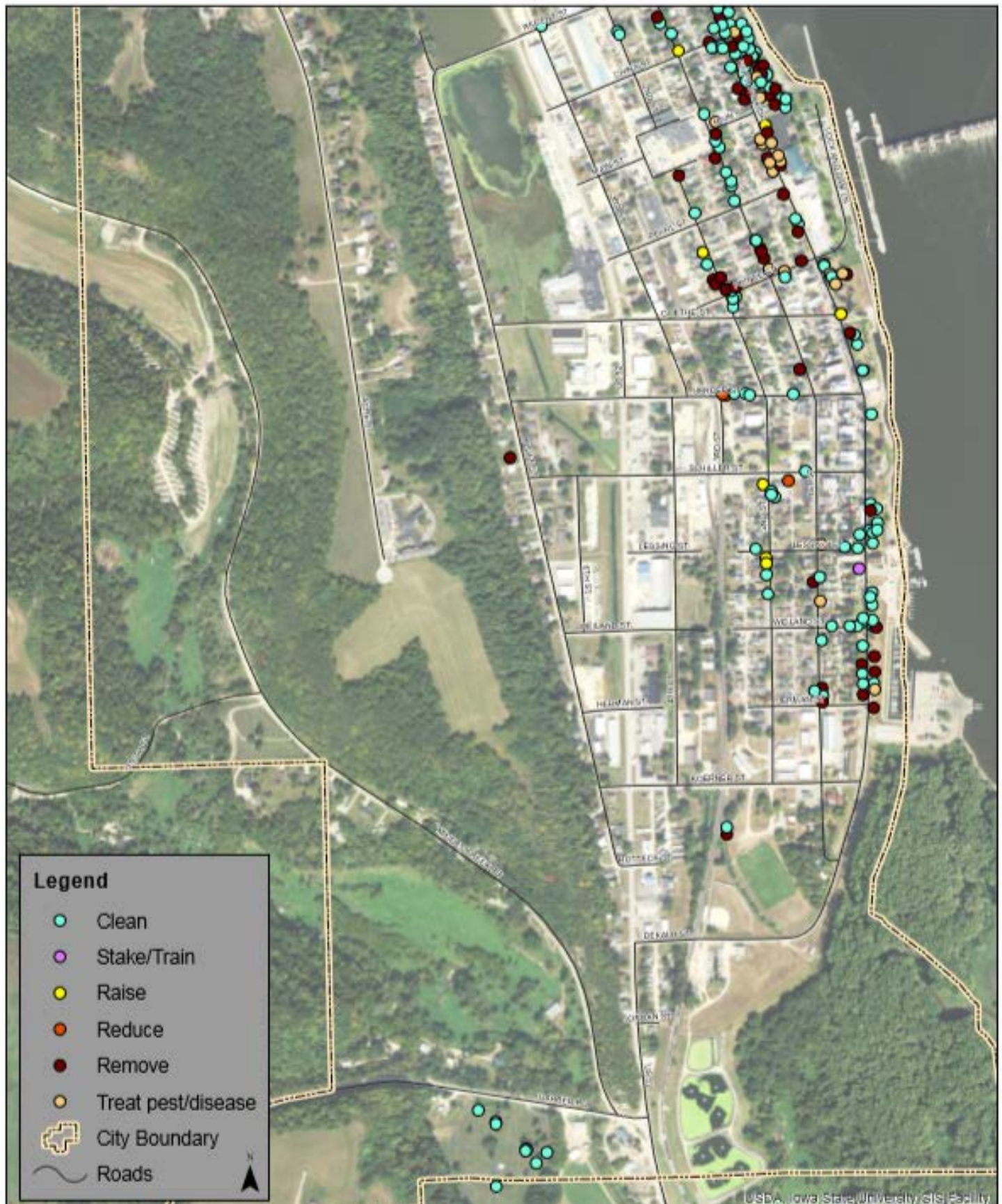


Figure 6a:

Location of Treatable Ash Trees
2018 Community Tree Inventory
Guttenberg, IA



Figure 6b:

Location of Treatable Ash Trees
2018 Community Tree Inventory
Guttenberg, IA



Figure 7a:

**Removed Trees
2018 Community Tree Inventory
Guttenberg, IA**



Figure 7b:

Removed Trees
2018 Community Tree Inventory
Guttenberg, IA



Appendix C: Guttenberg Tree Ordinances

CHAPTER 151

TREES

151.01 Definition

151.02 Planting Restrictions

151.03 Duty to Trim Trees

151.04 Trimming Trees to be Supervised

151.05 Disease Control

151.06 Inspection and Removal

151.01 DEFINITION. For use in this chapter, “parking” means that part of the street, avenue or highway in the City not covered by sidewalk and lying between the lot line and the curb line; or, on unpaved streets, that part of the street, avenue or highway lying between the lot line and that portion of the street usually traveled by vehicular traffic.

151.02 PLANTING RESTRICTIONS. No tree shall be planted in any parking or street except in accordance with the following:

1. Alignment. All trees planted in any street shall be planted in the parking midway between the outer line of the sidewalk and the curb. In the event a curb line is not established, trees shall be planted on a line ten (10) feet from the property line.
2. Spacing. Trees shall not be planted on any parking which is less than five (5) feet in width, or contains less than seventy-five (75) square feet of exposed soil surface per tree. Trees shall not be planted closer than twenty (20) feet from street intersections (property lines extended) and ten (10) feet from driveways. If it is at all possible trees should be planted inside the property lines and not between the sidewalk and the curb.
3. Prohibited Trees. No person shall plant in any street any fruit-bearing tree or any tree of the kinds commonly known as cottonwood, poplar, box elder, Chinese elm, evergreen, willow or black walnut.

151.03 DUTY TO TRIM TREES. The owner or agent of the abutting property shall keep the trees on, or overhanging the street, trimmed so that all branches will be at least fifteen (15) feet above the surface of the street and eight (8) feet above the sidewalks. If the abutting property owner fails to trim the trees, the City may serve notice on the abutting property owner requiring that such action be taken within five (5) days. If such action is not taken within that time, the City may perform the required action and assess the costs against the abutting property for collection in the same manner as a property tax.

(Code of Iowa, Sec. 364.12[2c, d & e])

151.04 TRIMMING TREES TO BE SUPERVISED. Except as allowed in Section 151.03, it is unlawful for any person to trim or cut any tree in a street or public place unless the work is done under the supervision of the City.

151.05 DISEASE CONTROL. Any dead, diseased or damaged tree or shrub which may harbor serious insect or disease pests or disease injurious to other trees is hereby declared to be a nuisance.

151.06 INSPECTION AND REMOVAL. The Council shall inspect or cause to be inspected any trees or shrubs on any City property (including the strip between the curb and the lot line of private property) reported or suspected to be dead, diseased or damaged. The Council may cause such conditions to be corrected by treatment or removal. The Council may also order the removal of any trees on the streets of the City which interfere with the making of improvements or with travel thereon. *(Ord. 555-12 – May 12 Supp.)*

[The next page is 775]

The State of Iowa is an Equal Opportunity Employer and provider of ADA services.

Federal law prohibits employment discrimination on the basis of race, color, age, religion, national origin, sex or disability. State law prohibits employment discrimination on the basis of race, color, creed, age, sex, sexual orientation, gender identity, national origin, religion, pregnancy, or disability. State law also prohibits public accommodation (such as access to services or physical facilities) discrimination on the basis of race, color, creed, religion, sex, sexual orientation, gender identity, religion, national origin, or disability. If you believe you have been discriminated against in any program, activity or facility as described above, or if you desire further information, please contact the Iowa Civil Rights Commission, 1-800-457-4416, or write to the Iowa Department of Natural Resources, Wallace State Office Bldg., 502 E 9th St, Des Moines IA 50319.

If you need accommodations because of disability to access the services of this Agency, please contact the Director at 515-725-8200.