

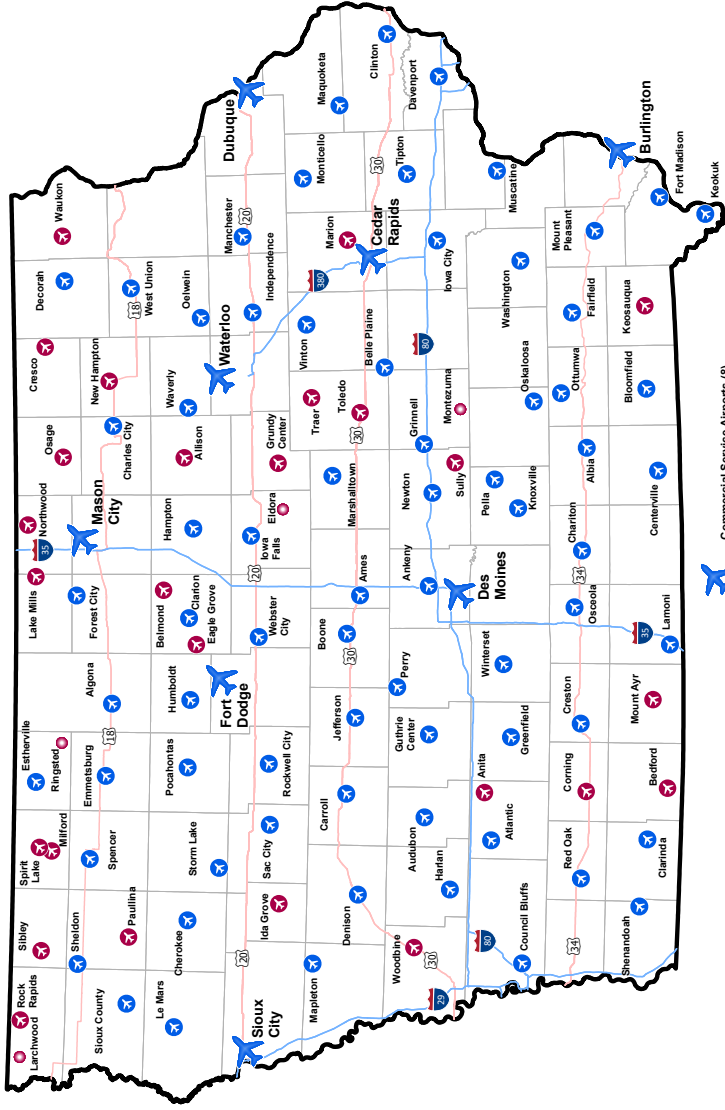
# IOWA

## AIRPORT DIRECTORY

2025-2026



# IOWA AVIATION SYSTEM



-  Commercial Service Airports (8)
-  General Aviation Airports (71)
-  General Aviation Airports (26)

 NPIAS  
 NON-NPIAS

The Iowa Department of Transportation is pleased to distribute the 2025-2026 Iowa Airport Directory. This directory includes information on Iowa's public-use airports, Automated Weather Observing System (AWOS) locations, a description of what pilots should know about AWOS, laws on seaplane operations, contact information for the FAA, a crosswind component chart, transponder codes, weather minimums, and a flight plan form.

Information in this directory was accurate at the time of publishing. Pilots are strongly urged to refer to current U.S. government information, including navigational charts, NOTAMs and Flight Service briefings prior to any flight. This directory is a supplement and should not be used in lieu of a current FAA Supplemental Chart with current airport information.

Iowa is a great place to fly! Enjoy your time in the air and at the great airports throughout the state. For more information on airports, news, events, aircraft registration requirements, and learning to fly, visit [iowadot.gov/aviation](http://iowadot.gov/aviation).

Fly safe!  
Tim McClung



Aviation Director

# Iowa AM Radio Stations

LOCATION	IDENTIFIER	FREQ (KHZ)	LOCATION	IDENTIFIER	FREQ (KHZ)
Algona	KLGA	1600	Fort Dodge	KVFD	1400
Ames	KASI	1430	Grinnell	KGRN	1410
Atlantic	KJAN	1220	Independence	KQMG	1220
Boone	KWBG	1590	Iowa City	KCJJ	1630
Boone	KDLF	1260	Iowa City	KXIC	800
Burlington	KBKB	1360	Iowa Falls	KIFG	1510
Burlington	KBUR	1490	Keokuk	KOKX	1310
Burlington	KCPS	1150	Knoxville	KNIA	1320
Carroll	KCIM	1380	LeMars	KLEM	1410
Cedar Falls	KCFI	1250	Marshalltown	KDAO	1190
Cedar Falls	KCNZ	1650	Marshalltown	KFJB	1230
Cedar Rapids	KGYM	1600	Mason City	KGLO	1300
Cedar Rapids	KMRY	1450	Mason City	KRIB	1490
Cedar Rapids	KMJM	1360	Mount Pleasant	KILJ	1130
Centerville	KCOG	1400	Muscatine	KWPC	860
Charles City	KCHA	1580	Newton	KCOB	1280
Cherokee	KCHE	1440	Oelwein	KOEL	950
Clinton	KCLN	1390	Oskaloosa	KMZN	740
Clinton	KROS	1340	Ottumwa	KBIZ	1240
Council Bluffs	KLNG	1560	Ottumwa	KLEE	1480
Creston	KSIB	1520	Perry	KDLS	1310
Davenport	KBOB	1170	Red Oak	KOAK	1080
Davenport	WOC	1420	Sheldon	KIWA	1550
Decorah	KDEC	1240	Shenandoah	KMA	960
Denison	KDSN	1530	Sioux Center	KSOU	1090
Des Moines	KBGG	1700	Sioux City	KMNS	620
Des Moines	KXNO	1460	Sioux City	KSCJ	1360
Des Moines	KRNT	1350	Sioux City	KWSL	1470
Des Moines	KWKY	1150	Spencer	KICD	1240
Des Moines	KPSZ	940	Storm Lake	KAYL	990
Des Moines	WHO	1040	Washington	KCII	1380
Dubuque	KDTH	1370	Waterloo	KPTY	1330
Dubuque	WDBQ	1490	Waterloo	KXEL	1540
Elkader	KADR	1400	Waukon	KMRV	1160
Estherville	KILR	1070	Waverly	KWAY	1470
Fairfield	KMCD	1570	Webster City	KZWC	1570



# 1. AIRPORT NAME (FAA CODE)

2. LAT:

3. LONG:

4. POPULATION:

5. ELEVATION:

6. FROM CITY:

7. ADDRESS:

8. HOURS

9. MANAGER

10. OPERATORS



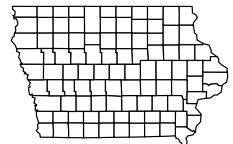
11. CITY/TOWN

RWY	SURFACE	LENGTH	WIDTH	LIGHTING		VGSI	
				RUNWAY	APPROACH		
12.	13.	14.	15.	16.	17.	18.	
CTAF	UNICOM	LGTS	GROUND	TOWER	APPROACH	WEATHER	CLNC DEL
19.	20.	21.	22.	23.	24.	25.	26.

REMARKS:  
27.

FUEL  
28.

BEACON  
29.



# Information Key

<b>1. AIRPORT NAME</b>	Airport name and three-character designator assigned by FAA for flight-planning purposes
<b>2. LAT</b>	Approximate latitude of the center of the airport
<b>3. LONG</b>	Approximate longitude of the center of the airport
<b>4. POPULATION</b>	Population of the city according to 2000 census
<b>5. ELEVATION</b>	Field elevation as listed on FAA 5010
<b>6. FROM CITY</b>	Direction and distance from related city in nautical miles
<b>7. ADDRESS</b>	911 address
<b>8. HOURS</b>	Hours the airport is attended or service is available
<b>9. MANAGER</b>	Designated contact person and phone number
<b>10. OPERATORS</b>	Fixed-base operator's name and phone number
<b>11. CITY/TOWN</b>	Name of closest city associated with airport
<b>12. RUNWAY</b>	Identification numbers taken from magnetic bearing
<b>13. SURFACE</b>	Runway surface type - turf, asphalt, concrete, etc.
<b>14. LENGTH</b>	Total available distance in feet or surfaced length in feet (not including overruns)
<b>15. WIDTH</b>	Usable runway width in feet or surfaced width in feet
<b>16. RUNWAY LIGHTS</b>	Low (LIRL), Medium (MIRL) or High (HIRL) Intensity Runway Edge Lights
<b>17. APPROACH LIGHTS</b>	REIL Runway End Identifier Lights  ODALS Omni Directional Approach Lighting System  MALS Medium Intensity Approach Lighting System  MALSR Medium Intensity Approach Lighting System with Runway Alignment Indicator Lights  SALS Short Approach Lighting System  SALSF Short Approach Lighting System with Sequenced Flashing Lights  SSALS Simplified Short Approach Lighting System  SSALR Simplified Short Approach Lighting System with Runway Alignment Indicator Lights  ALSF1 High Intensity Approach Lighting System with Sequenced Flashing Lights, Category I, Configuration  ALSF2 High Intensity Approach Lighting System with Sequenced Flashing Lights, Category II, Configuration

# Information Key

## 18. VISUAL GLIDESLOPE INDICATORS (VGSIs)

PAPI	Precision Approach Path Indicator P2L - 2 identical light units on left side of runway P2R - 2 identical light units on right side of runway P4L - 4 identical light units on left side of runway P4R - 4 identical light units on right side of runway
PVASI	Pulsating/Steady Burning Visual Approach Slope Indicator, normally a single light unit projecting two colors PSIL - PVASI on left side of runway PSIR - PVASI on right side of runway
SAVASI	Simplified Abbreviated Visual Approach Slope Indicator S2L 2 - box SAVASI on left side of runway S2R 2 - box SAVASI on right side of runway
TRCV	Tri-color Visual Approach Slope Indicator, normally a single light unit projecting three colors TRIL - TRCV on left side of runway TRIR - TRCV on right side of runway
VASI	Visual Approach Slope Indicator V2L - 2-box VASI on left side of runway V2R - 2-box VASI on right side of runway V4L - 4-box VASI on left side of runway V4R - 4-box VASI on right side of runway

19. CTAF	Common Traffic Advisory Frequency
20. UNICOM	Local airport advisory frequency
21. LIGHTS (LGTS)	Pilot-controlled lighting frequency
22. GROUND	Ground control frequency
23. TOWER	Control tower frequency
24. APPROACH	Approach control frequency
25. WEATHER	Airport Terminal Information Service (ATIS) Automated Surface Observing System (ASOS) Automated Weather Observing System (AWOS) Frequency and telephone number
26. CLNC DEL	Clearance delivery frequency
27. REMARKS	Information specific to particular airport
28. FUEL	Type of fuel available
29. BEACON	Alternate green and white rotating airport beacon light

# Automated Weather Observation System

The Automated Weather Observation System (AWOS) enhances safety by providing critical airport weather information to pilots to be used for flight planning and in-flight decision making. The system provides real-time weather observations including wind, visibility, current weather, sky conditions, temperature, dew point, altimeter setting, and remarks, such as density altitude and local airport conditions.

Iowa has an integrated system of 44 AWOS sites at airports in Iowa that are maintained by the Iowa DOT's Modal Transportation Bureau. An additional 16 weather observation sites maintained by the Federal Aviation Administration are located at airports in Iowa.

AWOS information can be accessed in a variety of ways, including radio frequency, telephone and weather terminals at airports with AWOS. It can also be accessed from a variety of Web sites, including the Iowa DOT's Weatherview page available through the "Pilots" page on the Modal Transportation Bureau's website at [iowadot.gov/aviation](http://iowadot.gov/aviation). All AWOS information is disseminated nationwide through a system called NADIN, making it available to sources like Flight Service Stations, the National Weather Service and the Weather Channel.

## What every pilot should know about AWOS

### Wind

- taken every second and a running 2-minute average is updated every 5 seconds
- wind speeds of less than 3 knots are reported as calm
- if the difference between the highest 5-second average and 2-minute average exceeds 5 knots, gusts are reported
- wind direction is reported from the nearest 10 degree magnetic heading

### Visibility

- readings are taken every 15 seconds and are averaged over a 10-minute period

### Present weather

- a precipitation sensor samples every 15 seconds
- temperature and visibility measurements are used to determine precipitation type

### Sky condition (ceilings)

- readings are taken every 30 seconds and averaged over a 30-minute period
- ceiling measurements are rounded as follows:
  - nearest 100' up to 5000' AGL
  - nearest 500' from 5000'-10,000' AGL
  - nearest 1000' above 10,000'

### Temperature and dew point

- four, 1-minute averages are used to determine the temperature

**Altimeter (barometric pressure)**

- pressure sensors take readings every 10 seconds and a 1-minute average is calculated

**Remarks**

- a calculated density altitude report is provided, if density altitude is greater than 1000' above the airport's field elevation
- occasionally, airport managers will provide recorded remarks regarding NOTAM's or local airport conditions.

AWOS is maintained by the Iowa DOT's Modal Transportation Bureau and is continuously monitored to ensure its operational status. Individual sites are also maintained and calibrated on a regular basis to ensure reliability and accuracy. As with any electronic device, care must be used when interpreting data. By knowing how AWOS data is collected, a pilot can better understand the information.

Any questions regarding Iowa's AWOS may be directed to the Iowa DOT's Modal Transportation Bureau at 515-239-1468.

**Iowa AWOS Information**  
includes state and federally(\*) maintained facilities

<b>FAA ID</b>	<b>Airport name</b>	<b>AWOS phone</b>	<b>Airport Frequency</b>
AXA	Algona Municipal	515-295-9634	118.475
AMW*	Ames Municipal	515-233-2611	132.025
IKV	Ankeny Regional	515-965-5764	119.175
AIO	Atlantic Municipal	712-243-2748	127.825
ADU	Audubon County	712-563-2101	118.075
BNW	Boone Municipal	515-432-9042	120.925
CIN	Carroll Municipal	712-792-2306	118.025
TVK	Centerville Municipal	641-437-1213	123.775
CNC	Chariton Municipal	641-774-5645	125.525
CKP	Cherokee Municipal	712-225-1088	119.225
ICL	Clarinda Municipal	712-542-3345	132.025
CAV	Clarion Municipal	515-532-3515	126.575
CBF	Council Bluffs Municipal	712-323-1542	126.575
CSQ	Creston Municipal	641-782-6286	124.75
DVN*	Davenport Municipal	563-388-2154	120.175
DEH	Decorah Municipal	563-382-2990	120.925
DNS	Denison Municipal	712-263-6558	119.95
DSM*	Des Moines International	515-974-8013	119.55
DBQ*	Dubuque Regional	563-557-2579	127.25
CID*	Eastern Iowa	319-558-5153	124.15
EST*	Estherville Municipal	712-362-7250	121.425

<b>FAA ID</b>	<b>Airport name</b>	<b>AWOS phone</b>	<b>Airport Frequency</b>
FFL	Fairfield Municipal	641-472-4548	132.025
FXY	Forest City Municipal	641-581-2347	123.925
FOD*	Fort Dodge Regional	515-955-5490	118.775
FSW	Fort Madison Municipal	319-372-5147	120.925
GGI	Grinnell Municipal	641-236-9720	120.725
HPT	Hampton Municipal	641-456-4055	121.025
HNR	Harlan Municipal	712-744-4400	118.325
IIB	Independence Municipal	319-334-3879	120.825
IOW*	Iowa City Municipal	319-339-9491	128.075
IFA	Iowa Falls Municipal	641-648-2469	120.425
EOK	Keokuk Municipal	319-524-7884	118.375
OXV	Knoxville Municipal	641-828-8406	119.775
LWD*	Lamoni Municipal	641-784-8122	120.00
LRJ	LeMars Municipal	712-546-8439	120.975
MIW*	Marshalltown Municipal	641-752-2339	128.325
MCW*	Mason City Municipal	641-357-8490	120.30
MXO	Monticello Municipal	319-465-6155	119.275
MPZ	Mount Pleasant Municipal	319-385-4926	119.325
MUT	Muscatine Municipal	563-263-0902	120.625
TNU	Newton Municipal	641-791-3302	132.275
CCY	Northeast Iowa Regional	641-228-7069	125.525
OLZ	Oelwein Municipal	319-283-3518	119.675
I75	Osceola Municipal	641-342-1422	120.975
OOA	Oskaloosa Municipal	641-933-4312	118.625
OTM*	Ottumwa Industrial	641-684-9164	124.175
PEA	Pella Municipal	641-628-3459	118.875
PRO	Perry Municipal	515-465-2269	118.00
RDK	Red Oak Municipal	712-623-3220	123.925
SHL	Sheldon Regional	712-324-5159	119.775
SDA	Shenandoah Municipal	712-246-4021	125.525
SUX*	Sioux City Gateway	712-293-2445	119.45
SXK	Sioux County Regional	712-567-1005	120.075
BRL*	Southeast Iowa Regional	319-752-6246	118.025
SPW*	Spencer Municipal	712-262-8885	126.625
SLB	Storm Lake Municipal	712-732-2301	118.525
VTI	Vinton Municipal	319-472-3122	120.075
AWG	Washington Municipal	319-653-4149	127.825
ALO*	Waterloo Municipal	319-233-8984	120.65
EBS	Webster City Municipal	515-832-2794	127.825

# ACKLEY MUNICIPAL (4C7)

**LAT:** 42-32-48  
**ELEVATION:** 1070 FEET

**LONG:** 93-01-58  
**FROM CITY:** 1 MILE SE

**POPULATION:** 3,706  
**ADDRESS:** 1301 4TH AVE

**HOURS**  
 UNATTENDED

**MANAGER**  
 DALE BRASS  
 641-847-3395  
 641-751-4666 (cell)

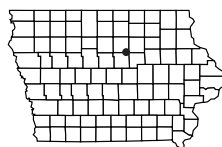
**OPERATORS**  
 NONE



RWY	SURFACE	LENGTH	WIDTH	LIGHTING		VGS	
				RUNWAY	APPROACH		
15/33	*TURF	2125	100	LIRL	NONE/NONE	NONE/NONE	
CTAF	UNICOM	LGTS	GROUND	TOWER	APPROACH	WEATHER	CLNC DEL
122.90							

**REMARKS:**  
 PRIVATE OWNERSHIP/PUBLIC USE  
 \*AIRPORT CLOSED WHEN SNOW ON SURFACE  
 RC AIRCRAFT INVOF  
 SEASONAL AG AIRCRAFT ACTIVITY

**FUEL**  
 NONE  
**BEACON**  
 NO



# ALBIA MUNICIPAL (4C8)

**LAT:** 40-59-47  
**ELEVATION:** 963 FEET

**LONG:** 92-45-57

**POPULATION:** 3,721

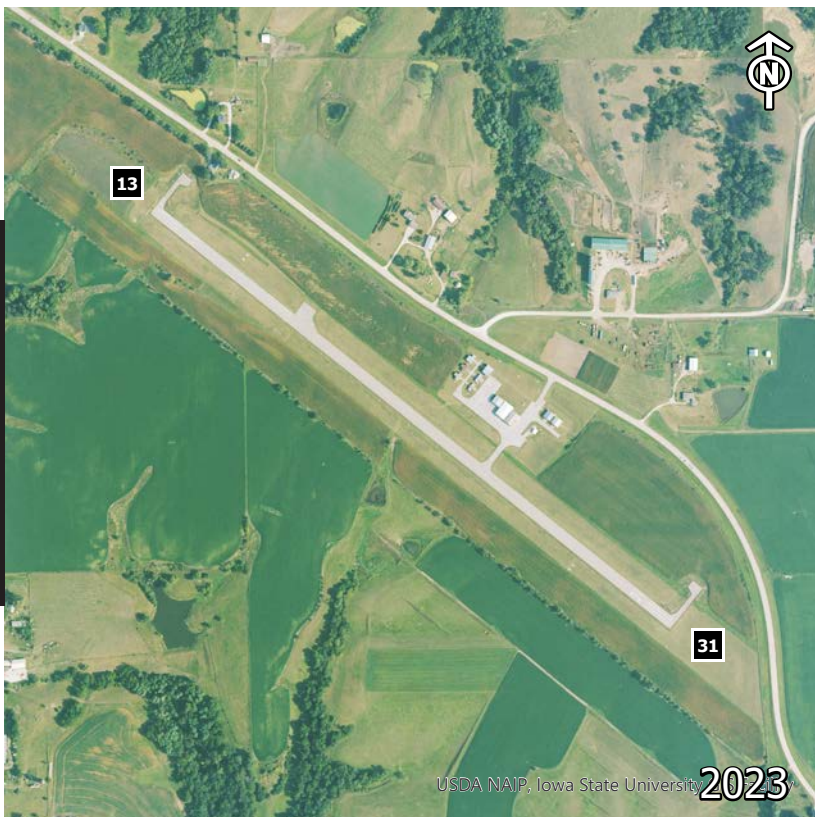
**FROM CITY:** 3 MILE SE

**ADDRESS:** 6750 201ST ST

**HOURS**  
UNATTENDED

**MANAGER**  
LINDA HELLER  
641-932-2129

**OPERATORS**  
NONE



ALBIA

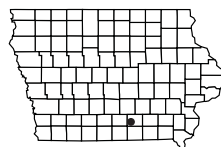
RWY	SURFACE	LENGTH	WIDTH	LIGHTING		VGSI	
				RUNWAY	APPROACH		
13/31	ASPH	3398	60	MIRL	NONE/NONE	P2L/P2L	
CTAF	UNICOM	LGTS	GROUND	TOWER	APPROACH	WEATHER	CLNC DEL
122.80	122.80	122.80			118.15 ZAU		

**REMARKS:**

**FUEL**  
NONE

**BEACON**  
YES

10





# ALGONA MUNICIPAL (AXA)

**LAT:** 43-04-41  
**ELEVATION:** 1216 FEET

**LONG:** 94-16-18  
**FROM CITY:** 2 MILE W

**POPULATION:** 5,741  
**ADDRESS:** 2907 HIGHWAY 18

**HOURS**  
MON-FRI 0800-1700  
SAT 0800-1200

**MANAGER**  
JIM KOHLHAAS  
515-320-0870

**OPERATORS**  
ALGONA AERO SERVICE  
515-320-0870

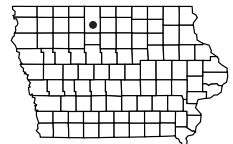


**ALGONA**

RWY	SURFACE	LENGTH	WIDTH	LIGHTING		VGS	
				RUNWAY	APPROACH		
18/36	TURF	2880	160	NONE	NONE/NONE	NONE/NONE	
12/30	CONC	3960	75	MIRL	REIL/REIL	P2L/P2L	
CTAF	UNICOM	LGTS	GROUND	TOWER	APPROACH	WEATHER	CLNC DEL
122.80	122.80	122.80			134.00 ZMP	118.475 515-295-9634	

**REMARKS:**  
AGRICULTURAL OPS  
AEROBATIC OPS  
PARAGLIDER OPS

**FUEL**  
100LL/JETA  
**BEACON**  
YES



# ALLISON MUNICIPAL (K98)

**LAT:** 42-45-42  
**ELEVATION:** 1053 FEET

**LONG:** 92-48-17  
**FROM CITY:** NW EDGE

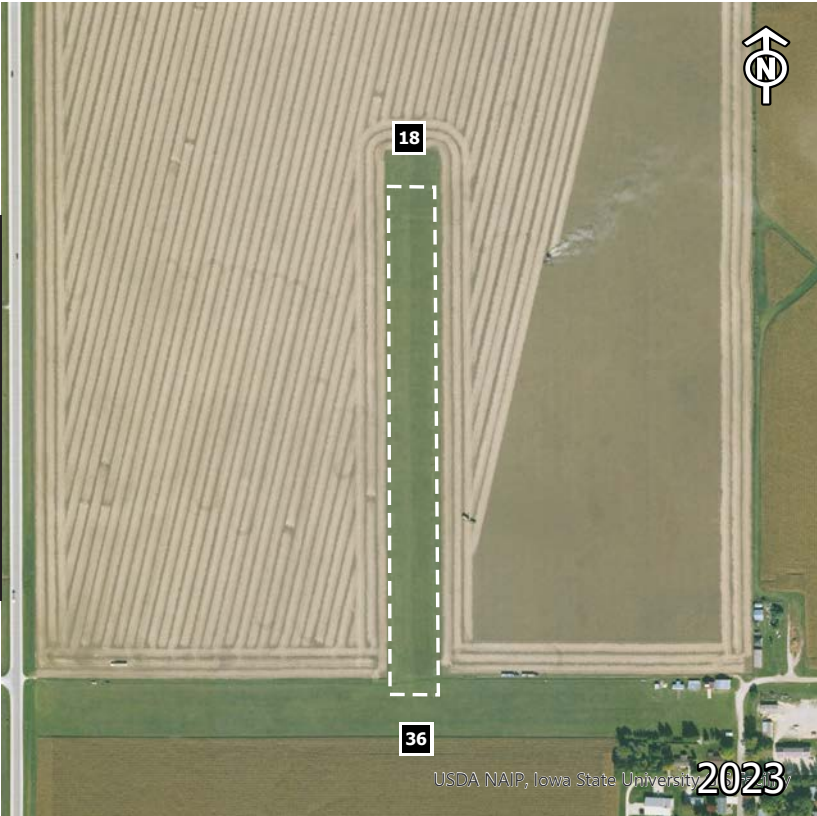
**POPULATION:** 1,006  
**ADDRESS:** 823 BIRCH ST

**HOURS**  
 UNATTENDED

**MANAGER**  
 JAY SCHRAGE  
 319-267-2495 (HOME)  
 319-239-5048 (CELL)

**OPERATORS**  
 NONE

ALLISON

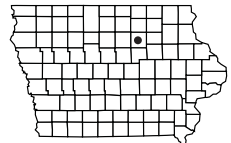


RWY	SURFACE	LENGTH	WIDTH	LIGHTING		VGSI	
				RUNWAY	APPROACH		
18/36	TURF	1790	175	NONE	NONE/NONE	NONE/NONE	
CTAF	UNICOM	LGTS	GROUND	TOWER	APPROACH	WEATHER	CLNC DEL
122.90							

**REMARKS:**  
 CLOSED TO NIGHT OPERATIONS  
 CHECK FOR WINTER CONDITIONS

**FUEL**  
 NONE

**BEACON**  
 NO



# AMANA (C11)

**LAT:** 41-47-39  
**ELEVATION:** 712 FEET

**LONG:** 91-51-53  
**FROM CITY:** SE EDGE

**POPULATION:** 1,678  
**ADDRESS:** 950 48TH AVE

**HOURS**  
 MARCH - NOV.  
 IRREGULAR

**MANAGER**  
 JOHN D. THOMPSON  
 319-622-3251

**OPERATORS**  
 THOMPSON AERO INC.  
 319-622-3251

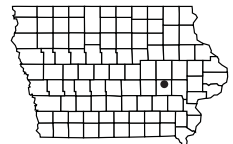


**AMANA**

RWY	SURFACE	LENGTH	WIDTH	LIGHTING		VGS	
				RUNWAY	APPROACH		
08/26	*TURF	2600	95	NONE	NONE/NONE	NONE/NONE	
CTAF	UNICOM	LGTS	GROUND	TOWER	APPROACH	WEATHER	CLNC DEL
122.90							

**REMARKS:**  
 PRIVATE OWNERSHIP/PUBLIC USE  
 LANDING FEE  
 \*CALL FOR CONDITIONS

**FUEL**  
 NONE  
**BEACON**  
 NO



# AMES MUNICIPAL (AMW)

**LAT:** 41-59-31  
**ELEVATION:** 955 FEET

**LONG:** 93-37-19

**POPULATION:** 58,965

**FROM CITY:** 1 MILE S

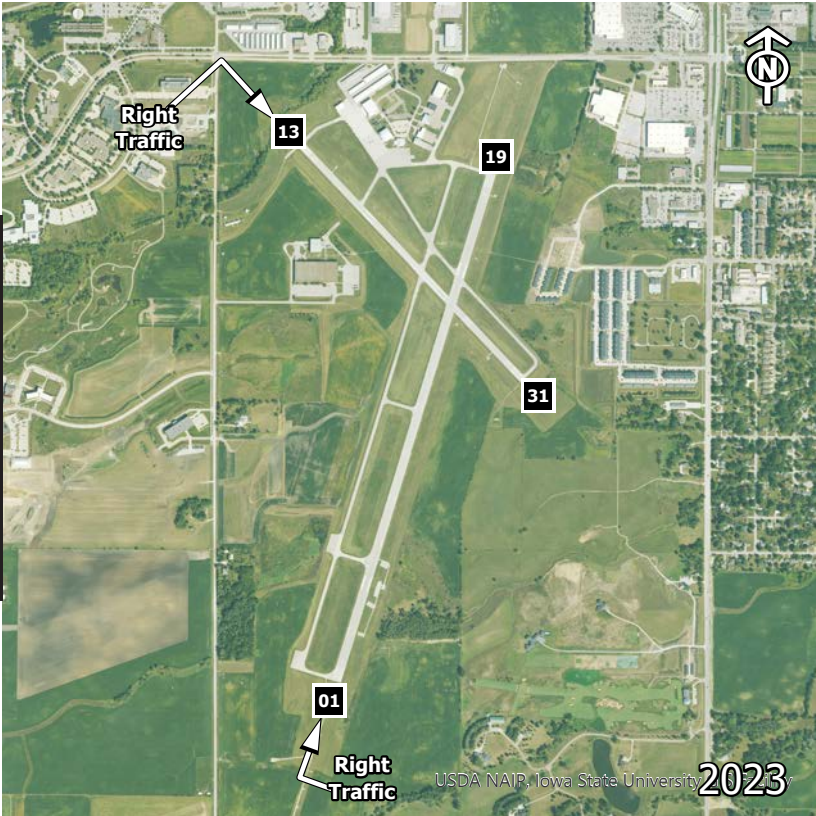
**ADDRESS:** 2520 AIRPORT DR

**HOURS**  
DAWN-DUSK

**MANAGER**  
DAMION PREGITZER  
515-239-5160

**OPERATORS**  
CENTRAL IOWA AIR SERVICE  
515-292-9056

HAP'S AIR SERVICE  
515-232-4310

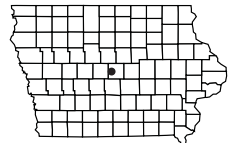


RWY	SURFACE	LENGTH	WIDTH	LIGHTING		VGSI	
				RUNWAY	APPROACH		
01/19	ASPH	5701	100	MIRL	MALS/R/ NONE	NONE/V4L	
13/31	CONC	3491	75	MIRL	NONE/NONE	V4L/V4L	
CTAF	UNICOM	LGTS	GROUND	TOWER	APPROACH	WEATHER	CLNC DEL
122.70	122.70	122.70			123.90 DSM	132.025 515-233-2611	126.00

**REMARKS:**  
INTENSIVE FLIGHT TRAINING AND  
GLIDER OPERATIONS INVOLVING  
STADIUM WITHIN 3NM

**FUEL**  
JETA/100LL

**BEACON**  
YES





# ANITA MUNICIPAL-BURKE MEMORIAL FIELD (Y43)

LAT: 41-26-25

LONG: 94-46-13

POPULATION: 1,049

ELEVATION: 1251 FEET

FROM CITY: S EDGE

ADDRESS: 800 TRUMAN RD

**HOURS**  
UNATTENDED

**MANAGER**  
TOM WITTROCK  
712-249-3520

**OPERATORS**  
NONE



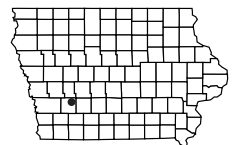
ANITA

RWY	SURFACE	LENGTH	WIDTH	LIGHTING		VGS	
				RUNWAY	APPROACH		
05/23	TURF	2825	95	LIRL	NONE/NONE	NONE/NONE	
CTAF	UNICOM	LGTS	GROUND	TOWER	APPROACH	WEATHER	CLNC DEL
122.90							

**REMARKS:**  
BE ALERT OF DEER INVOF

**FUEL**  
NONE

**BEACON**  
NO



# ANKENY REGIONAL (IKV)

**LAT:** 41-41-30

**LONG:** 93-33-59

**POPULATION:** 75,000

**ELEVATION:** 910 FEET **FROM CITY:** 1 MILE E EDGE **ADDRESS:** 3737 SE CONVENIENCE BLVD

**HOURS**

MON-FRI 0600-2200  
SAT-SUN 0700-2000

**MANAGER**

PAUL MORITZ, P.E.  
515-965-6428

**OPERATORS**

EXEC 1 AVIATION, INC.  
515-965-1020

**ANKENY**



RWY	SURFACE	LENGTH	WIDTH	LIGHTING		VGSI	
				RUNWAY	APPROACH		
*18/36 04/22	CONC CONC	5500 4200	100 75	HIRL MIRL	REIL/REIL REIL/REIL	P2L/P2L P2L/P2L	
CTAF	UNICOM	LGTS	GROUND	TOWER	APPROACH	WEATHER	CLNC DEL
122.90	122.90	122.90			123.90 DSM	119.175 515-965-5764	126.65

**REMARKS:**

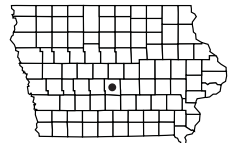
\*RWY 18 PREFERRED CALM WIND RWY

**FUEL**

100LL/JETA

**BEACON**

YES



# ATLANTIC MUNICIPAL (AIO)

LAT: 41-24-27

LONG: 95-02-52

POPULATION: 7,257

ELEVATION: 1165 FEET

FROM CITY: 2 MILE W

ADDRESS: 59706 AIRPORT RD

## HOURS

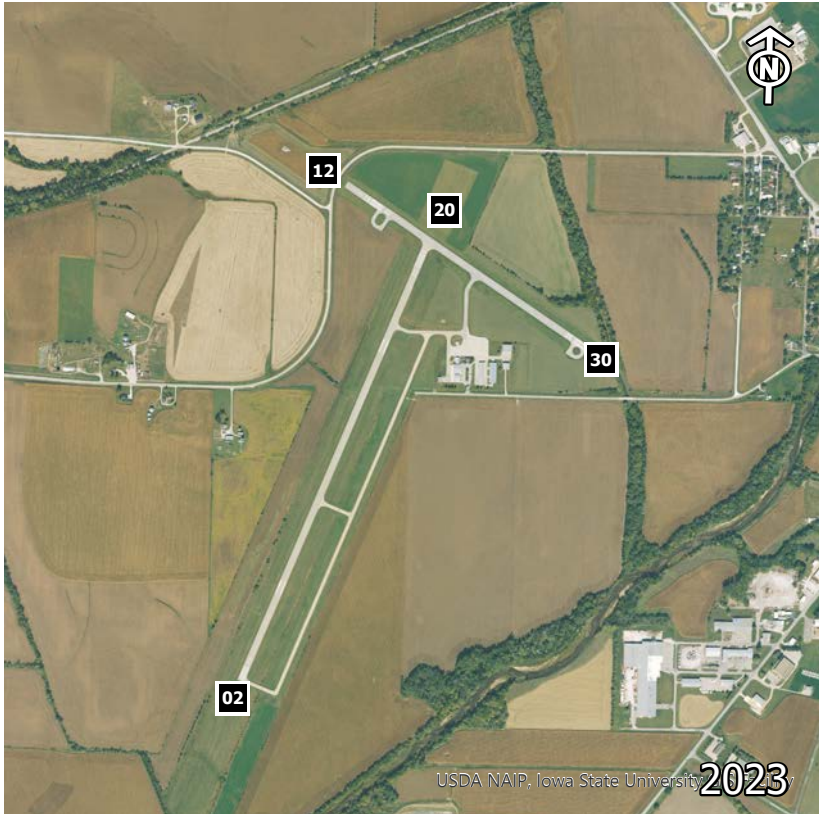
MON-FRI 0800-1700  
SAT 0800-1200

## MANAGER

BARRY REID  
712-243-3056

## OPERATORS

AIRWORKS  
712-243-3056



RWY	SURFACE	LENGTH	WIDTH	LIGHTING		VGSI	
				RUNWAY	APPROACH		
*12/30 02/20	ASPH CONC	3132 5000	75 75	MIRL MIRL	NONE/NONE REIL/REIL	NONE/NONE P2L/P2L	
CTAF	UNICOM	LGTS	GROUND	TOWER	APPROACH	WEATHER	CLNC DEL
122.70	122.70	122.70			119.60 ZMP	127.825 712-243-2748	

## REMARKS:

AFTER HOURS: 712-267-3263

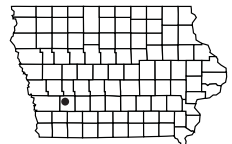
\*RWY 12 THRESHOLD DISPLACED 290'

## FUEL

100LL/JETA

## BEACON

YES





# AUDUBON COUNTY (ADU)

**LAT:** 41-42-05  
**ELEVATION:** 1287 FEET

**LONG:** 94-55-14

**POPULATION:** 2,176

**FROM CITY:** 1 MILE SE

**ADDRESS:** 2110 HIGHWAY 71

**HOURS**  
 UNATTENDED

**MANAGER**  
 AIRPORT AUTHORITY  
 712-563-4440

**OPERATORS**  
 NONE

**AUDUBON**



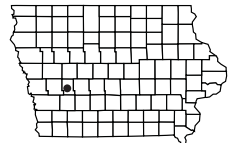
RWY	SURFACE	LENGTH	WIDTH	LIGHTING		VGS	
				RUNWAY	APPROACH		
*14/32	CONC	3641	60	MIRL	REIL/REIL	P2L/P2L	
CTAF	UNICOM	LGTS	GROUND	TOWER	APPROACH	WEATHER	CLNC DEL
122.80	122.80	122.80			119.60 ZMP	118.075 712-563-2101	

**REMARKS:**  
 \*RWY 14 THRESHOLD  
 DISPLACED 130'

SELF SERVE FUEL

**FUEL**  
 100LL/JETA

**BEACON**  
 YES





# BEDFORD MUNICIPAL (Y46)

**LAT:** 40-38-15      **LONG:** 94-43-46      **POPULATION:** 1,620  
**ELEVATION:** 1201 FEET      **FROM CITY:** 3 MILE S      **ADDRESS:** 2103 290TH ST

**HOURS**  
UNATTENDED

**MANAGER**  
ALAN NICHOLAS  
712-523-2210

**OPERATORS**  
NONE



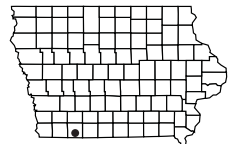
**BEDFORD**

RWY	SURFACE	LENGTH	WIDTH	LIGHTING		VGS	
				RUNWAY	APPROACH		
18/36	TURF	2710	100	NONE	NONE/NONE	NONE/NONE	
CTAF	UNICOM	LGTS	GROUND	TOWER	APPROACH	WEATHER	CLNC DEL
122.90							

**REMARKS:**  
NONE

**FUEL**  
NONE

**BEACON**  
NO



# BELLE PLAINE MUNICIPAL - MANSFIELD TIPPIE (TZT)

**LAT:** 41-52-44

**LONG:** 92-17-04

**POPULATION:** 2,878

**ELEVATION:** 771 FEET

**FROM CITY:** 1 MILE SW

**ADDRESS:** 200 AIRPARK DR.

**HOURS**  
UNATTENDED

**MANAGER**  
STEVE BECK  
319-444-2200 (city hall)  
319-310-3918 (cell)

**OPERATORS**  
HOLZWORTH AIR SERVICE  
319-310-5662

**BELLE PLAINE**

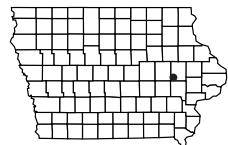


RWY	SURFACE	LENGTH	WIDTH	LIGHTING		VGSI	
				RUNWAY	APPROACH		
18/36	CONC	4001	75	MIRL	NONE/NONE	NONE/NONE	
CTAF	UNICOM	LGTS	GROUND	TOWER	APPROACH	WEATHER	CLNC DEL
122.90		122.90			119.70 CID		

**REMARKS:**  
BE ALERT FOR WILDLIFE INVOF  
SELF SERVE FUEL AVAILABLE  
COURTESY CAR

**FUEL**  
100LL

**BEACON**  
YES



# BELMOND MUNICIPAL (Y48)

LAT: 42-51-15

LONG: 93-35-35

POPULATION: 2,376

ELEVATION: 1201 FEET

FROM CITY: 1 MILE E

ADDRESS: 1607 3RD ST NE

**HOURS**  
UNATTENDED

**MANAGER**  
JOEL BUSEMAN  
515-988-7677

**OPERATORS**  
NONE



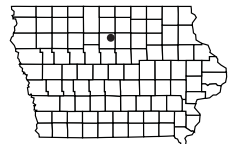
**BELMOND**

RWY	SURFACE	LENGTH	WIDTH	LIGHTING		VGS	
				RUNWAY	APPROACH		
17/35	*TURF	3245	95	LIRL	NONE/NONE	NONE/NONE	
CTAF	UNICOM	LGTS	GROUND	TOWER	APPROACH	WEATHER	CLNC DEL
122.90							

**REMARKS:**  
\*CLOSED DURING WINTER

**FUEL**  
NONE

**BEACON**  
NO



# BLOOMFIELD MUNICIPAL (4K6)

**LAT:** 40-43-56  
**ELEVATION:** 888 FEET

**LONG:** 92-25-42  
**FROM CITY:** 2 MILE SW

**POPULATION:** 2,050  
**ADDRESS:** 20956 230TH ST

**HOURS**  
MON-FRI 0830-1730  
SAT 0900-1200

**MANAGER**  
TONY SPARGUR  
641-664-1255

**OPERATORS**  
HEARTLAND AVIATION  
641-664-1255

**BLOOMFIELD**



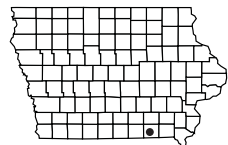
RWY	SURFACE	LENGTH	WIDTH	LIGHTING		VGS	
				RUNWAY	APPROACH		
18/36	CONC	3401	60	MIRL	NONE/NONE	P2L/P2L	
CTAF	UNICOM	LGTS	GROUND	TOWER	APPROACH	WEATHER	CLNC DEL
122.80	122.80	122.80			118.15 ZAU		

**REMARKS:**  
AFTER HOURS SERVICE:  
641-208-6709

**FUEL**  
100LL

**BEACON**  
YES

22





# BOONE MUNICIPAL (BNW)

LAT: 42-02-59

LONG: 93-50-53

POPULATION: 12,803

ELEVATION: 1160 FEET

FROM CITY: 2 MILE SE

ADDRESS: 424 SNEDDEN DR

## HOURS

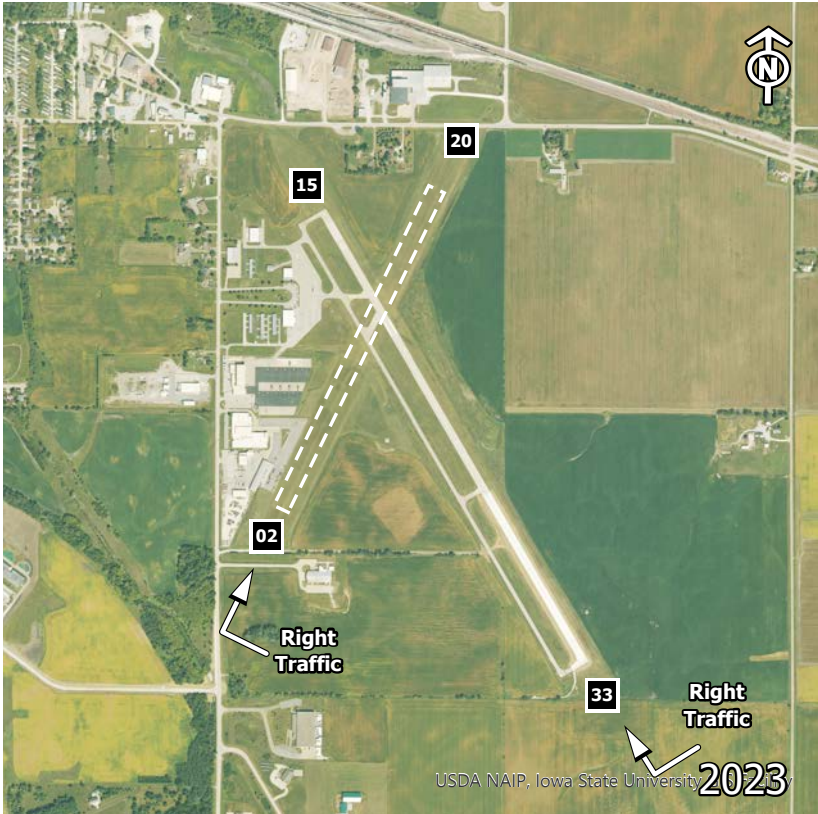
0800-1700

## MANAGER

DALE FARNHAM  
515-432-1018

## OPERATORS

FARNHAM AVIATION SER-  
VICES  
515-432-1018



RWY	SURFACE	LENGTH	WIDTH	LIGHTING		VGS	
				RUNWAY	APPROACH		
*15/33 02/20	CONC TURF	4808 3248	75 146	MIRL NONE	REIL/NONE NONE/NONE	P2L/P2L NONE/NONE	
CTAF	UNICOM	LGTS	GROUND	TOWER	APPROACH	WEATHER	CLNC DEL
123.00	123.00	123.00			123.90 DSM	120.925 515-432-9042	

## REMARKS:

\*RWY 15 THRESHOLD DISPLACED 140 FEET

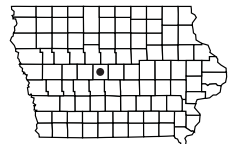
MILITARY & HELICOPTER ACTIVITY  
24 HR CREDIT CARD 100LL AND MOGAS

## FUEL

100LL/JETA/MOGAS

## BEACON

YES



# SOUTHEAST IOWA REGIONAL (BRL)

**LAT:** 40-47-01  
**ELEVATION:** 698 FEET

**LONG:** 91-07-32  
**FROM CITY:** 2 MILE SW

**POPULATION:** 26,839  
**ADDRESS:** 2515 SUMMER ST

**HOURS**  
 MON-FRI 0700-1900

**MANAGER**  
 SARA SANDBURG  
 319-754-1414

**OPERATORS**  
 JET AIR  
 319-237-8500

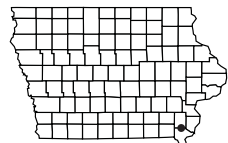
**BURLINGTON**



RWY	SURFACE	LENGTH	WIDTH	LIGHTING		VGSI	
				RUNWAY	APPROACH		
12/30* *18/36	CONC CONC	5351 6102	100 100	MIRL HIRL	REIL/REIL REIL/MALSR	P4L/P4L P4L/NONE	
CTAF	UNICOM	LGTS	GROUND	TOWER	APPROACH	WEATHER	CLNC DEL
123.00	123.00	123.00			135.60 ZAU	118.025 319-752-6246	

**REMARKS:**  
 \*RWY 30 THRESHOLD DISPLACED 500'  
 RCO - 122.65  
 SELF SERVE 100LL AVAILABLE

**FUEL**  
 100LL/JETA  
**BEACON**  
 YES



# CARROLL MUNICIPAL - ARTHUR N. NEU (CIN)

LAT: 42-02-46

LONG: 94-47-21

POPULATION: 10,098

ELEVATION: 1204 FEET

FROM CITY: 4 MILE SE

ADDRESS: 21177 QUAIL AVE

## HOURS

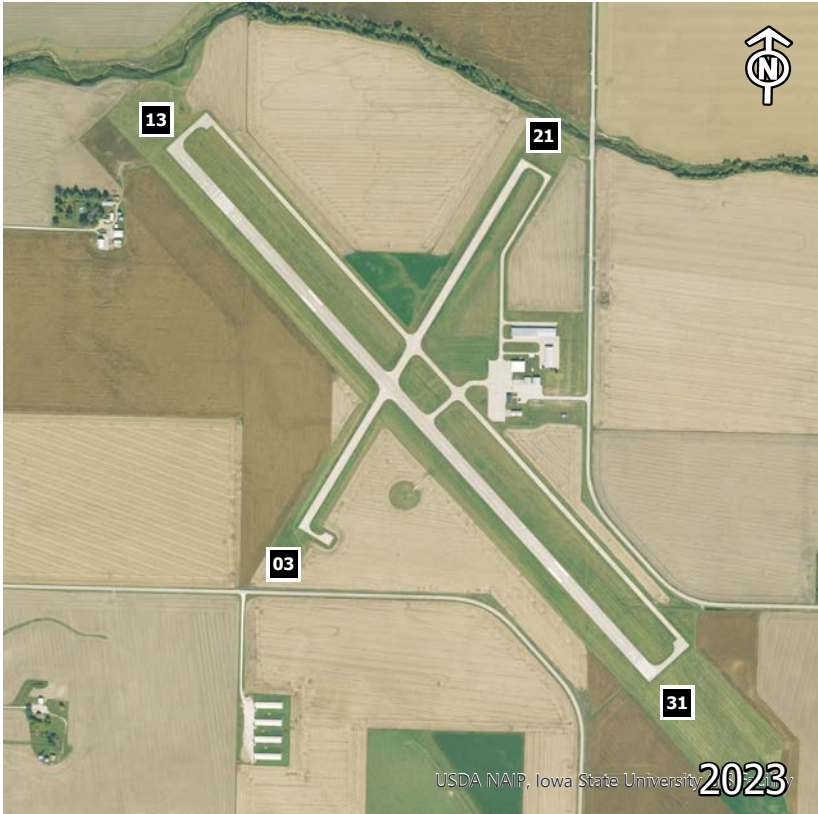
MON-FRI 0800-DUSK

## MANAGER

DONALD P. MENSEN  
712-792-4980

## OPERATORS

CARROLL AVIATION  
712-792-4980



CARROLL

RWY	SURFACE	LENGTH	WIDTH	LIGHTING		VGS	
				RUNWAY	APPROACH		
*13/31	CONC	5506	100	MIRL	REIL/REIL	P2L/P2L	
03/21	CONC	3301	60	MIRL	REIL/REIL	P2L/P2L	
CTAF	UNICOM	LGTS	GROUND	TOWER	APPROACH	WEATHER	CLNC DEL
122.80	122.80	122.80			134.00 ZMP	118.025 712-792-2306	

## REMARKS:

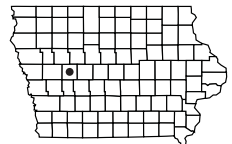
\*RWY 13 THRESHOLD DISPLACED 505'  
24 HOUR SELF SERVE FUEL  
MANAGER LIVES ON SITE

## FUEL

100LL/JETA

## BEACON

YES





# EASTERN IOWA (CID)

**LAT:** 41-53-04

**LONG:** 91-42-36

**POPULATION:** 128,429

**ELEVATION:** 869 FEET **FROM CITY:** 5 MILE SW **ADDRESS:** 2515 ARTHUR COLLINS PKWY SW

**HOURS**  
24 HOURS

**MANAGER**  
MARTIN LENSCH  
319-731-5713

**OPERATORS**  
SIGNATURE FLIGHT SUPPORT  
319-366-1925

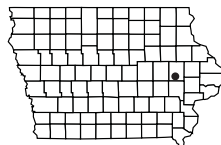
**CEDAR RAPIDS**



RWY	SURFACE	LENGTH	WIDTH	LIGHTING		VGSI	
				RUNWAY	APPROACH		
09/27* 13/31	CONC ASPH-CONC	8600 6200	150 150	HIRL MIRL	MALSR/MALSR NONE/MALSR	P4R/P4L P4L/V4L	
CTAF	UNICOM	LGTS	GROUND	TOWER	APPROACH	WEATHER	CLNC DEL
118.70	122.95	118.70	121.60	118.70	119.70 134.05	124.150 319-558-5153	125.45

**REMARKS:**  
RWY 27 THRESHOLD DISPLACED 425'  
BE ALERT OF BIRDS INVOF  
TOWER OPERATION 0500-2330 DAILY  
RCO - 122.55

**FUEL**  
100LL/JETA/MOGAS  
**BEACON**  
YES





# CENTERVILLE MUNICIPAL (TVK)

**LAT:** 40-41-04  
**ELEVATION:** 1023 FEET

**LONG:** 92-54-04  
**FROM CITY:** 3 MILE SW

**POPULATION:** 5,924  
**ADDRESS:** 20320 545TH ST

**HOURS**  
MON-FRI 0900-1600

**MANAGER**  
TONY KURY  
641-895-6844

**OPERATORS**  
CENTERVILLE A.I.R. TECHS  
641-895-7450

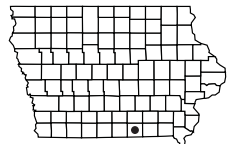


**CENTERVILLE**

RWY	SURFACE	LENGTH	WIDTH	LIGHTING		VGS	
				RUNWAY	APPROACH		
16/34	CONC	4099	75	MIRL	REIL/REIL	P2L/P2L	
CTAF	UNICOM	LGTS	GROUND	TOWER	APPROACH	WEATHER	CLNC DEL
122.80	122.80	122.80			118.15 ZAU	123.775 641-437-1213	

**REMARKS:**  
24-HOUR CREDIT CARD PUMPS  
  
AFTER HOURS CALL:  
641-895-6844

**FUEL**  
100LL/JETA/MOGAS  
  
**BEACON**  
YES



# CHARITON MUNICIPAL (CNC)

**LAT:** 41-01-11  
**ELEVATION:** 1050 FEET

**LONG:** 93-21-37  
**FROM CITY:** 2 MILE W

**POPULATION:** 4,193  
**ADDRESS:** 20199 HIGHWAY 34

**HOURS**  
 UNATTENDED

**MANAGER**  
 AIRPORT MANAGER  
 641-774-5991

**OPERATORS**  
 NONE

**CHARITON**



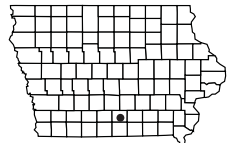
RWY	SURFACE	LENGTH	WIDTH	LIGHTING		VGSI	
				RUNWAY	APPROACH		
10/28	CONC	4000	75	MIRL	REIL/REIL	S3L/S3L	
17/35	CONC	2800	75	MIRL	REIL/REIL	P2L/P2L	
CTAF	UNICOM	LGTS	GROUND	TOWER	APPROACH	WEATHER	CLNC DEL
122.80	122.80	122.80			135.20 DSM	125.525 641-774-5645	

**REMARKS:**

**FUEL**  
 100LL/JETA

**BEACON**  
 YES

**28**



# THE NORTHEAST IOWA REGIONAL (CCY)

**LAT:** 43-04-19

**LONG:** 92-36-39

**POPULATION:** 7,812

**ELEVATION:** 1125 FEET

**FROM CITY:** 3 MILE E

**ADDRESS:** 3129 HIGHWAY 18

**HOURS**

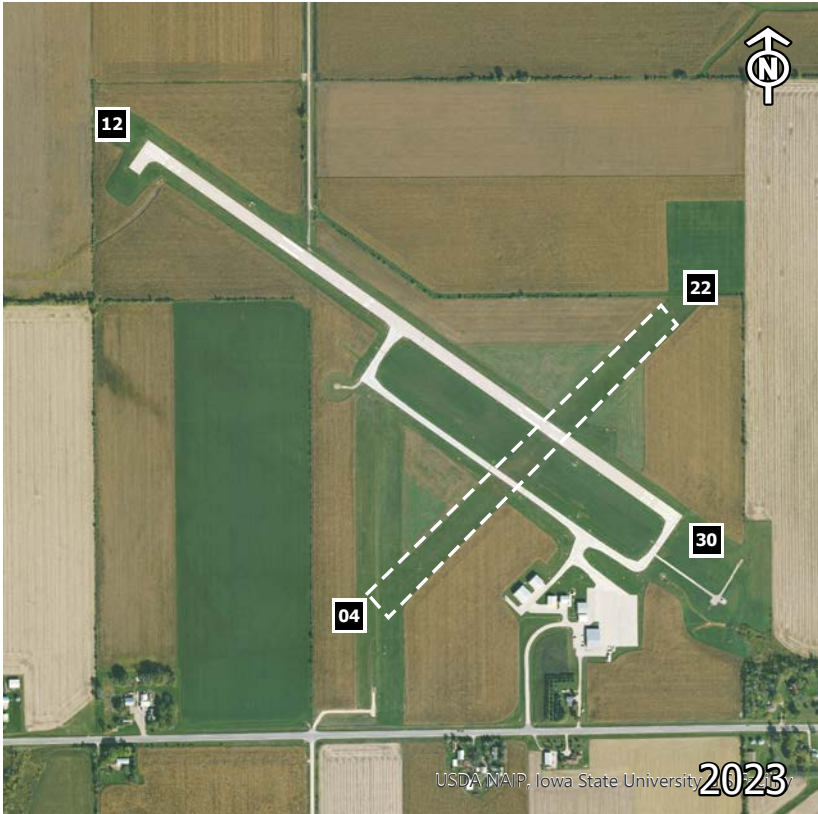
MON-SAT 0700-1700  
SUN 0800-1600

**MANAGER**

WILLIAM R. KYLE  
641-228-3553

**OPERATORS**

NORTH IOWA AIR SERVICE  
641-228-3553



**CHARLES CITY**

RWY	SURFACE	LENGTH	WIDTH	LIGHTING		VGSI	
				RUNWAY	APPROACH		
04/22	TURF	2536	160	NONE	NONE/NONE	NONE/NONE	
12/30	CONC	4000	75	MIRL	REIL/REIL	V2LV/2L	
CTAF	UNICOM	LGTS	GROUND	TOWER	APPROACH	WEATHER	CLNC DEL
122.80	122.80	122.80			118.90 ALO	125.525 641-228-7069	122.40

**REMARKS:**

SAWRs AVAILABLE ON AIRPORT

AFTER HOURS CALL: 641-330-8448

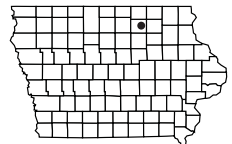
RCO - 122.4

**FUEL**

100LL/JETA

**BEACON**

YES



# CHEROKEE COUNTY REGIONAL (CKP)

**LAT:** 42-43-53

**LONG:** 95-33-22

**POPULATION:** 5,369

**ELEVATION:** 1226 FEET

**FROM CITY:** 1 MILE S

**ADDRESS:** 1201 S 2ND ST

**HOURS**

MON-FRI 0800-1700

**MANAGER**

SAVANNAH NELSON  
712-225-2810

**OPERATORS**

TOP NOTCH, LLC  
712-225-2810

**CHEROKEE**



RWY	SURFACE	LENGTH	WIDTH	LIGHTING		VGS	
				RUNWAY	APPROACH		
*18/36	CONC	4001	75	MIRL	REIL/REIL	P2L/P2R	
*01/19	*TURF	2621	100	NONE	NONE/NONE	NONE/NONE	
CTAF	UNICOM	LGTS	GROUND	TOWER	APPROACH	WEATHER	CLNC DEL
122.80	122.80	122.80			125.025 ZMP	119.225 712-225-1088	

**REMARKS:**

\*RWY 01 THRESHOLD DISPLACED 600'

\*RWY 01/19 CLOSED NOV-APRIL

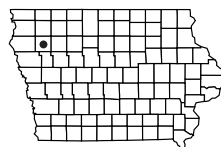
24 HOUR CREDIT CARD FUEL

**FUEL**

100LL/JETA

**BEACON**

YES





# CLARINDA MUNICIPAL - SCHENCK FIELD (ICL)

LAT: 40-43-20

LONG: 95-01-35

POPULATION: 5,572

ELEVATION: 996 FEET

FROM CITY: 1 MILE SE

ADDRESS: 698 E LAPERLA DR

**HOURS**  
UNATTENDED

**MANAGER**  
MILO BEERY  
712-542-3010

**OPERATORS**  
NONE



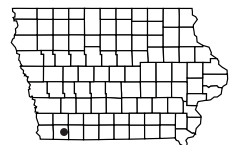
CLARINDA

RWY	SURFACE	LENGTH	WIDTH	LIGHTING		VGS	
				RUNWAY	APPROACH		
02/20	CONC	5000	75	MIRL	REIL/REIL	P4L/P4L	
13/31	TURF	2729	280	NONE	NONE/NONE	NONE/NONE	
CTAF	UNICOM	LGTS	GROUND	TOWER	APPROACH	WEATHER	CLNC DEL
122.80	122.80	122.80			119.60 ZMP	132.025 712-542-3345	

**REMARKS:**  
NONE

**FUEL**  
100LL/JETA

**BEACON**  
YES



# CLARION MUNICIPAL (CAV)

**LAT:** 42-44-33  
**ELEVATION:** 1157 FEET

**LONG:** 93-45-31  
**FROM CITY:** 1 MILE NW

**POPULATION:** 2,968  
**ADDRESS:** 2076 210TH ST

**HOURS**  
 UNATTENDED

**MANAGER**  
 JON DEVRIES  
 515-532-6980

**OPERATORS**  
 NONE

**CLARION**



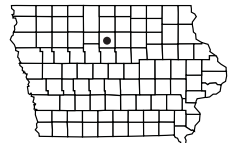
RWY	SURFACE	LENGTH	WIDTH	LIGHTING		VGSI	
				RUNWAY	APPROACH		
14/32	CONC	3455	60	MIRL	REIL/REIL	P2L/P2L	
CTAF	UNICOM	LGTS	GROUND	TOWER	APPROACH	WEATHER	CLNC DEL
122.80	122.80	122.80			134.00 ZMP	126.575 515-532-3515	

**REMARKS:**  
 TERMINAL OPEN 24/7

**FUEL**  
 100LL

**BEACON**  
 YES

**32**



# CLINTON MUNICIPAL (CWI)

**LAT:** 41-49-51  
**ELEVATION:** 708 FEET

**LONG:** 90-19-45  
**FROM CITY:** 6 MILE SW

**POPULATION:** 26,855  
**ADDRESS:** 2000 S 60TH ST

**HOURS**  
MON-FRI 0800-1700

**MANAGER**  
MARLANA NASS  
563-242-3292

**OPERATORS**  
NONE

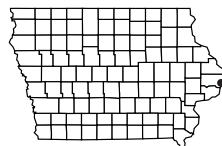


RWY	SURFACE	LENGTH	WIDTH	LIGHTING		VGS	
				RUNWAY	APPROACH		
14/32 03/21	CONC CONC	4201 5204	75 100	MIRL HIRL	REIL/NONE MALSR/REIL	P4L/P4L NONE/V4L	
CTAF	UNICOM	LGTS	GROUND	TOWER	APPROACH	WEATHER	CLNC DEL
122.80	122.80	118.50			125.95 MLI	125.525 563-243-8934	118.50

**REMARKS:**  
ULTRALIGHT ACTIVITY INVOF  
RWY 3 CALM WIND RWY

**FUEL**  
100LL/JETA

**BEACON**  
YES



# CORNING MUNICIPAL (CRZ)

**LAT:** 40-59-39  
**ELEVATION:** 1274 FEET

**LONG:** 94-45-18  
**FROM CITY:** 1 MILE W

**POPULATION:** 1,564  
**ADDRESS:** 1906 210TH ST

**HOURS**  
 UNATTENDED

**MANAGER**  
 CHRIS GILBERT  
 515-491-5508  
 641-322-4444

**OPERATORS**  
 NONE

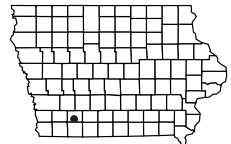
**CORNING**



RWY	SURFACE	LENGTH	WIDTH	LIGHTING		VGSI	
				RUNWAY	APPROACH		
18/36	CONC	2684	50	MIRL	REIL/NONE	NONE/NONE	
CTAF	UNICOM	LGTS	GROUND	TOWER	APPROACH	WEATHER	CLNC DEL
122.90		122.80					

**REMARKS:**  
 AFTER 4:30PM CALL 515-491-5508  
 SELF-SERVE CREDIT CARD FUEL  
 AVAILABLE  
 TIE DOWN SPOTS AVAILABLE

**FUEL**  
 100LL/MOGAS  
**BEACON**  
 YES





# COUNCIL BLUFFS MUNICIPAL (CBF)

LAT: 41-15-35

LONG: 95-45-35

POPULATION: 61,324

ELEVATION: 1245 FEET

FROM CITY: 4 MILE E

ADDRESS: 101 MC CANDLESS LANE

**HOURS**

0800-2000

**MANAGER**

ANDY BILLER  
712-322-2284

**OPERATORS**

REVV AVIATION  
712-323-2173



**COUNCIL BLUFFS**

RWY	SURFACE	LENGTH	WIDTH	LIGHTING		VGS	
				RUNWAY	APPROACH		
18/36	CONC	5500	100	HIRL	REIL/REIL	P2L/P2L	
14/32	CONC	3650	60	MIRL	REIL/REIL	P2L/P2L	
CTAF	UNICOM	LGTS	GROUND	TOWER	APPROACH	WEATHER	CLNC DEL
122.725	122.725	122.725			124.50 OMA	126.575 712-323-1542	

**REMARKS:**

RCO - 127.675

WEBSITE: WWW.CBAIRPORT.COM

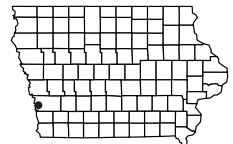
SELF-SERVE 100LL AND JETA

**FUEL**

100LL/JETA

**BEACON**

YES



# CRESCO MUNICIPAL - ELLEN CHURCH FIELD (CJJ)

**LAT:** 43-21-55     **LONG:** 92-07-59     **POPULATION:** 3,905  
**ELEVATION:** 1279 FEET     **FROM CITY:** SW EDGE     **ADDRESS:** 468 AIRPORT RD

**HOURS**  
UNATTENDED

**MANAGER**  
CLAIR PECINOVSKY  
563-547-4898

**OPERATORS**  
NONE

**CRESCO**

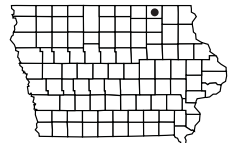


RWY	SURFACE	LENGTH	WIDTH	LIGHTING		VGSI	
				RUNWAY	APPROACH		
15/33	CONC	2949	50	LIRL	NONE/NONE	NONE	
CTAF	UNICOM	LGTS	GROUND	TOWER	APPROACH	WEATHER	CLNC DEL
122.80		122.70			118.85 ZMP		

**REMARKS:**  
ULTRALIGHT ACTIVITY INVOLV  
CLICK RADIO 5 TIMES FOR LIGHTS

**FUEL**  
NONE

**BEACON**  
NO



# CRESTON MUNICIPAL (CSQ)

**LAT:** 41-01-19      **LONG:** 94-21-45      **POPULATION:** 7,834  
**ELEVATION:** 1300 FEET      **FROM CITY:** 3 MILE S      **ADDRESS:** 1945 S CHERRY ST RD

**HOURS**  
MON-FRI 0800-1700

**MANAGER**  
TYLER WEST  
641-278-0203

**OPERATORS**  
WEST AVIATION INC.  
641-278-0203

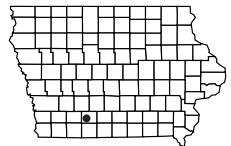


**CRESTON**

RWY	SURFACE	LENGTH	WIDTH	LIGHTING		VGS	
				RUNWAY	APPROACH		
*04/22 16/34*	TURF CONC	1692 4901	100 75	NONE MIRL	NONE/NONE REIL/REIL	NONE/NONE P2L/P2L	
CTAF	UNICOM	LGTS	GROUND	TOWER	APPROACH	WEATHER	CLNC DEL
122.80	122.80	122.80			125.65 ZMP	124.750 641-782-6286	

**REMARKS:**  
 \*RWY 04/22 CLOSED DURING WINTER  
 \*RWY 34 THRESHOLD RELOCATED 100'  
 FOR SERVICE AFTER HOURS AND  
 WEEKENDS, CALL: 641-202-6868  
 SELF-SERVE 100LL AND JETA AVAILABLE

**FUEL**  
100LL/JETA  
  
**BEACON**  
YES





# DAVENPORT MUNICIPAL (DVN)

**LAT:** 41-36-38

**LONG:** 90-35-18

**POPULATION:** 98,359

**ELEVATION:** 751 FEET

**FROM CITY:** 5 MILE N

**ADDRESS:** 9230 N HARRISON ST

**HOURS**

0700-DUSK

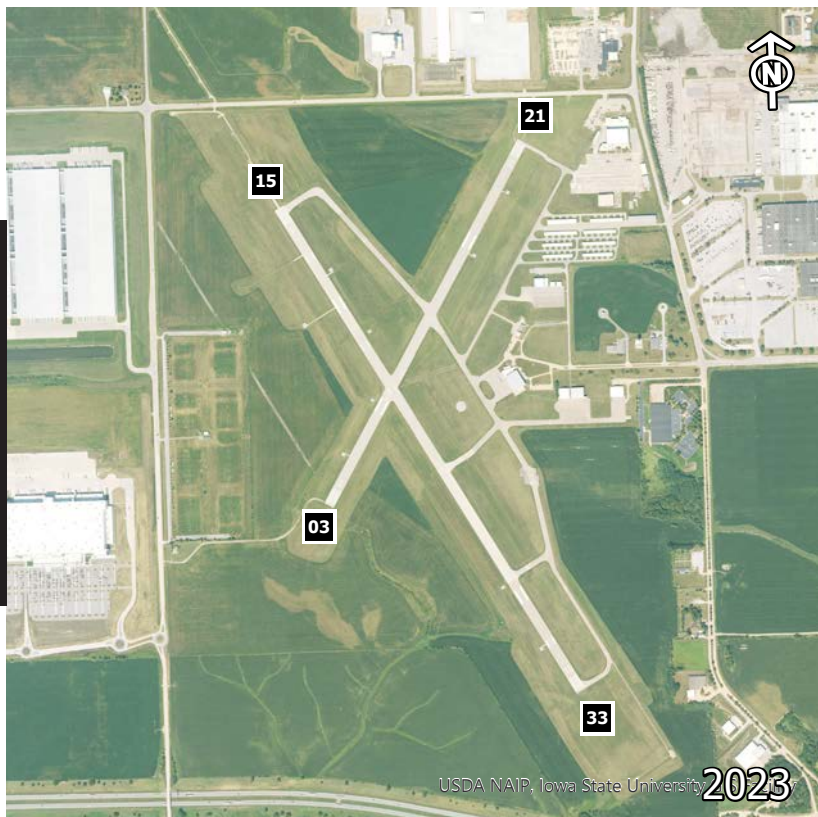
**MANAGER**

THOMAS VESALGA  
563-326-7783

**OPERATORS**

REVV AVIATION  
563-391-5650

**DAVENPORT**



RWY	SURFACE	LENGTH	WIDTH	LIGHTING		VGSI	
				RUNWAY	APPROACH		
03/21	CONC	4001	100	MIRL	REIL/REIL	V4L/V4L	
15/33	CONC	5511	100	HIRL	MALSR/REIL	V4L/V4L	
CTAF	UNICOM	LGTS	GROUND	TOWER	APPROACH	WEATHER	CLNC DEL
123.00	123.00	123.00			125.95 MLI	120.175 563-388-2154	118.35

**REMARKS:**

\*RWY 15 CALM WIND RWY

FOR FIELD OPERATIONS CONTACT:  
REVV AVIATION 563-391-5650

RCO- 122.5

SELF-SERVE 100LL AVAILABLE

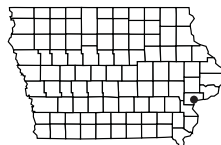
**FUEL**

100LL/JETA

**BEACON**

YES

**38**



# DECORAH MUNICIPAL (DEH)

**LAT:** 43-16-32      **LONG:** 91-44-22      **POPULATION:** 8,172  
**ELEVATION:** 1157 FEET      **FROM CITY:** 2 MILE SE      **ADDRESS:** 1705 HIGHWAY 9

**HOURS**  
 MON-FRI  
 0800-1700

**MANAGER**  
 MIKE CONNELL  
 563-382-8338

**OPERATORS**  
 CONNELL FLYING SERVICE  
 563-382-8338

SAT-SUN ON CALL



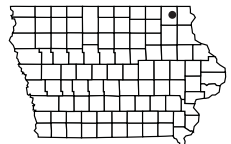
**DECORAH**

RWY	SURFACE	LENGTH	WIDTH	LIGHTING		VGS	
				RUNWAY	APPROACH		
11/29	CONC	4001	75	MIRL	REIL/REIL	P2L/V4L	
CTAF	UNICOM	LGTS	GROUND	TOWER	APPROACH	WEATHER	CLNC DEL
122.80	122.80	122.80			118.85 ZMP	120.925 563-382-2990	

**REMARKS:**  
 NONE

**FUEL**  
 100LL/JETA

**BEACON**  
 YES



# DENISON MUNICIPAL (DNS)

**LAT:** 41-59-13  
**ELEVATION:** 1276 FEET

**LONG:** 95-22-52  
**FROM CITY:** 2 MILE SW

**POPULATION:** 8,258  
**ADDRESS:** 2587 AIRPORT ST

**HOURS**  
 0800-1700

**MANAGER**  
 RYAN LEED  
 712-263-6424

**OPERATORS**  
 NONE

**DENISON**

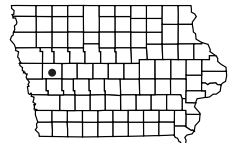


RWY	SURFACE	LENGTH	WIDTH	LIGHTING		VGSI	
				RUNWAY	APPROACH		
12/30*	CONC	5000	75	MIRL	REIL/REIL	P2L/P2L	
18/36	TURF	2000	120	NONE	NONE/NONE	NONE/NONE	
CTAF	UNICOM	LGTS	GROUND	TOWER	APPROACH	WEATHER	CLNC DEL
122.80	122.80	122.80			119.60 ZMP	119.950 712-263-6558	

**REMARKS:**  
 \*RWY 30 CALM WIND RWY  
 RCO - 122.40

**FUEL**  
 100LL/JETA

**BEACON**  
 YES





# DES MOINES INTERNATIONAL (DSM)

LAT: 41-32-02

LONG: 93-39-47

POPULATION: 214,237

ELEVATION: 958 FEET

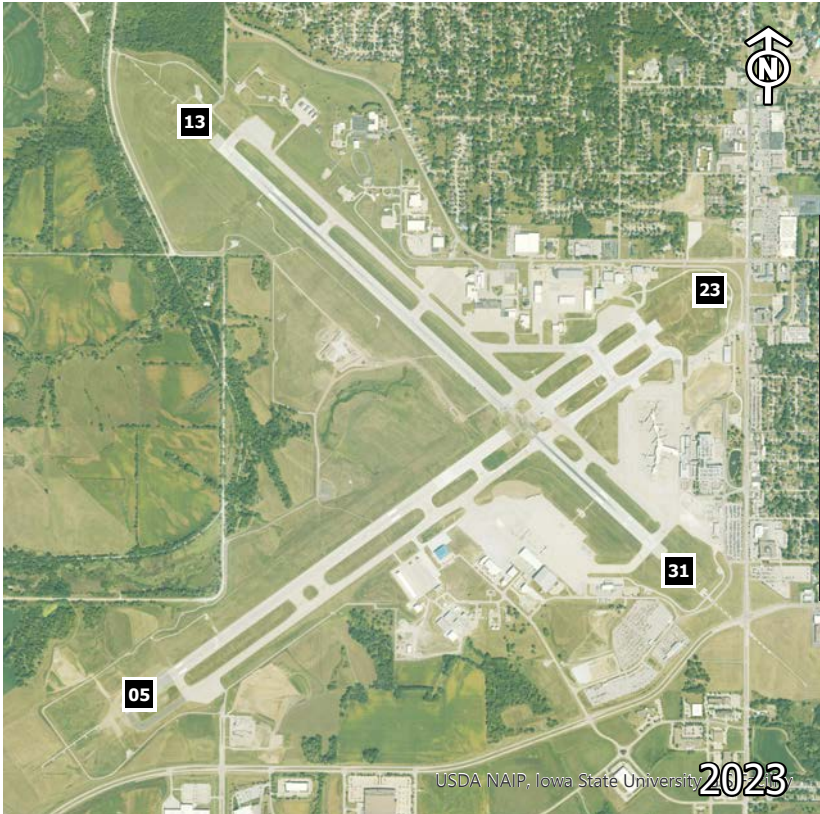
FROM CITY: SW EDGE

ADDRESS: 5800 FLEUR DR

**HOURS**  
ALL

**MANAGER**  
BRIAN MULCAHY  
515-256-5100

**OPERATORS**  
SIGNATURE AVIATION  
515-256-5330  
MODERN AVIATION  
515-285-6551



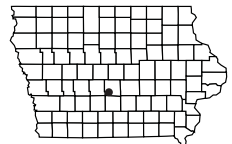
**DES MOINES**

RWY	SURFACE	LENGTH	WIDTH	LIGHTING		VGS	
				RUNWAY	APPROACH		
13/31	CONC	9001	150	HIRL	MALSR/ALSF2	V4L/P4L	
05/23	CONC	9004	150	HIRL	MALSR/REIL	P4L/P4L	
CTAF	UNICOM	LGTS	GROUND	TOWER	APPROACH	WEATHER	CLNC DEL
	122.95		121.90	118.30	123.90 135.20	119.550 515-974-8013	134.15

**REMARKS:**  
PATTERN IS DIRECTED BY TOWER  
RCO - 122.65

**FUEL**  
100LL/JETA

**BEACON**  
YES



# DUBUQUE REGIONAL (DBQ)

**LAT:** 42-24-07    **LONG:** 90-42-34    **POPULATION:** 58,052  
**ELEVATION:** 1076 FEET    **FROM CITY:** 7 MILE SW    **ADDRESS:** 10800 AIRPORT RD

**HOURS**  
ALL

**MANAGER**  
TODD DALSSING  
563-589-4128

**OPERATORS**  
DUBUQUE JET CENTER (FBO)  
563-589-4136  
AIRCRAFT MAINTENANCE  
BLUE SKIES OVER DUBUQUE  
563-582-1293

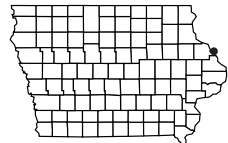
**DUBUQUE**



RWY	SURFACE	LENGTH	WIDTH	LIGHTING		VGSI	
				RUNWAY	APPROACH		
13/31	CONC	6502	100	HIRL	MALS/MALS	P4R/P4L	
18/36	CONC	6327	150	HIRL	REIL/MALS	P4L/P4L	
CTAF	UNICOM	LGTS	GROUND	TOWER	APPROACH	WEATHER	CLNC DEL
119.50	122.95	119.50	121.80	119.50	133.95 ZAU	127.250 563-557-2579	

**REMARKS:**  
TOWER OPERATED 0600-2200 DAILY  
24-HOUR SELF SERVE 100LL  
RCO - 122.05  
FBO HOURS 0600-2200  
24-HOUR SERVICE AVAILABLE ON  
REQUEST: 563-589-4136

**FUEL**  
100LL/JETA  
  
**BEACON**  
YES





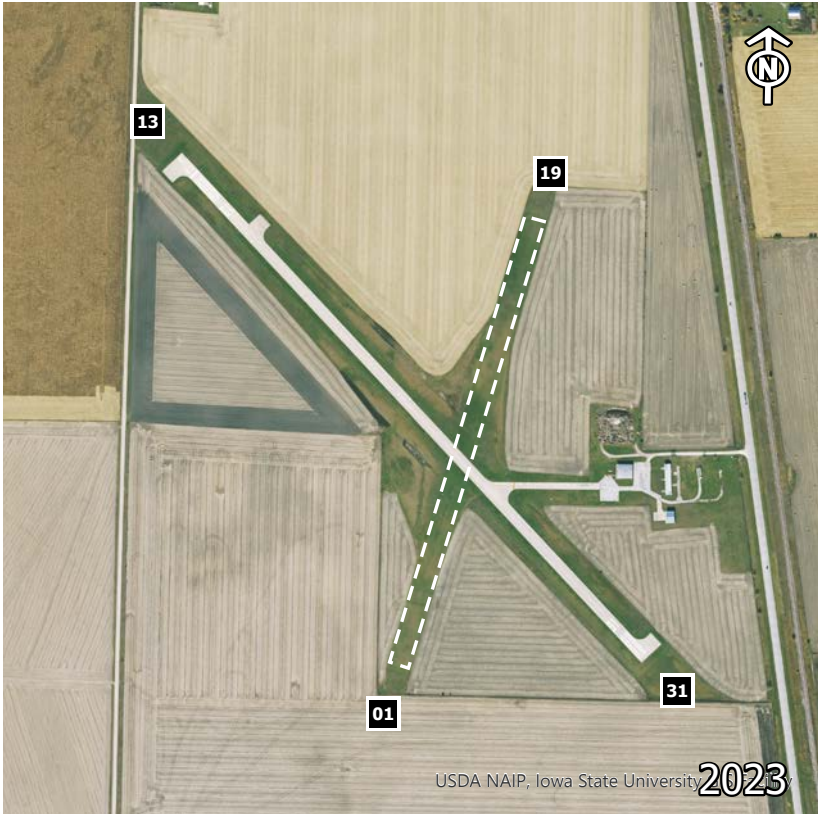
# EAGLE GROVE MUNICIPAL (EAG)

LAT: 42-42-36      LONG: 93-54-58      POPULATION: 3,712  
 ELEVATION: 1133 FEET      FROM CITY: 3 MILE N      ADDRESS: 2355 HIGHWAY 17

**HOURS**  
UNATTENDED

**MANAGER**  
AIRPORT MANAGER  
515-448-4343

**OPERATORS**  
NONE

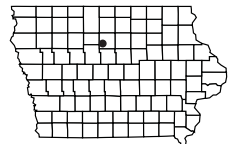


**EAGLE GROVE**

RWY	SURFACE	LENGTH	WIDTH	LIGHTING		VGS	
				RUNWAY	APPROACH		
*13/31 01/19	CONC *TURF	3500 2389	60 120	MIRL NONE	REIL/REIL NONE/NONE	NONE/NONE NONE/NONE	
CTAF	UNICOM	LGTS	GROUND	TOWER	APPROACH	WEATHER	CLNC DEL
122.80	122.80	122.80			134.00 ZMP		

**REMARKS:**  
 \*RWY 13 THRESHOLD DISPLACED 129'  
 \*RWY 01/19 CLOSED NOV-APRIL

**FUEL**  
100LL/JETA  
  
**BEACON**  
YES



# ELDORA (27P)

**LAT:** 42-19-50  
**ELEVATION:** 975 FEET

**LONG:** 93-06-51  
**FROM CITY:** 2 MILE SW

**POPULATION:** 3,035  
**ADDRESS:** 30161 260TH ST

**HOURS**  
 UNATTENDED

**MANAGER**  
 MARC BROER  
 515-249-8511

**OPERATORS**  
 NONE

**ELDORA**

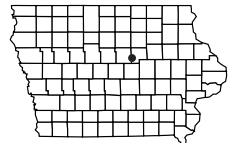


RWY	SURFACE	LENGTH	WIDTH	LIGHTING		VGSI	
				RUNWAY	APPROACH		
18/36	*TURF	2995	100	NONE	NONE/NONE	NONE/NONE	
CTAF	UNICOM	LGTS	GROUND	TOWER	APPROACH	WEATHER	CLNC DEL

**REMARKS:**  
 \* RWY 36 THRESHOLD  
 DISPLACED 215 FEET  
 OPEN FOR DAYLIGHT USE ONLY

**FUEL**  
 NONE

**BEACON**  
 NONE



# EMMETSBURG MUNICIPAL (EGQ)

**LAT:** 43-06-07      **LONG:** 94-42-17      **POPULATION:** 3,706  
**ELEVATION:** 1205 FEET      **FROM CITY:** 1 MILE SW      **ADDRESS:** 3775 450TH AVE

**HOURS**  
UNATTENDED

**MANAGER**  
KIM KIBBIE  
712-852-4030

**OPERATORS**  
MEYER AVIATION  
515-320-0544



**EMMETSBURG**

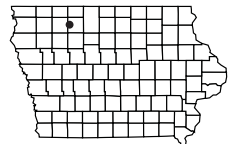
RWY	SURFACE	LENGTH	WIDTH	LIGHTING		VGS	
				RUNWAY	APPROACH		
13/31	CONC	3401	60	MIRL	NONE/NONE	S2L/S2R	
CTAF	UNICOM	LGTS	GROUND	TOWER	APPROACH	WEATHER	CLNC DEL
122.80	122.80	122.80			127.75 ZMP		

**REMARKS:**  
NONE

**FUEL**  
100LL

**BEACON**  
NO

**45**



# ESTHERVILLE MUNICIPAL (EST)

LAT: 43-24-26

LONG: 94-44-47

POPULATION: 6,656

ELEVATION: 1319 FEET

FROM CITY: 4 MILE E

ADDRESS: 1672 425TH AVE

## HOURS

DAWN-DUSK

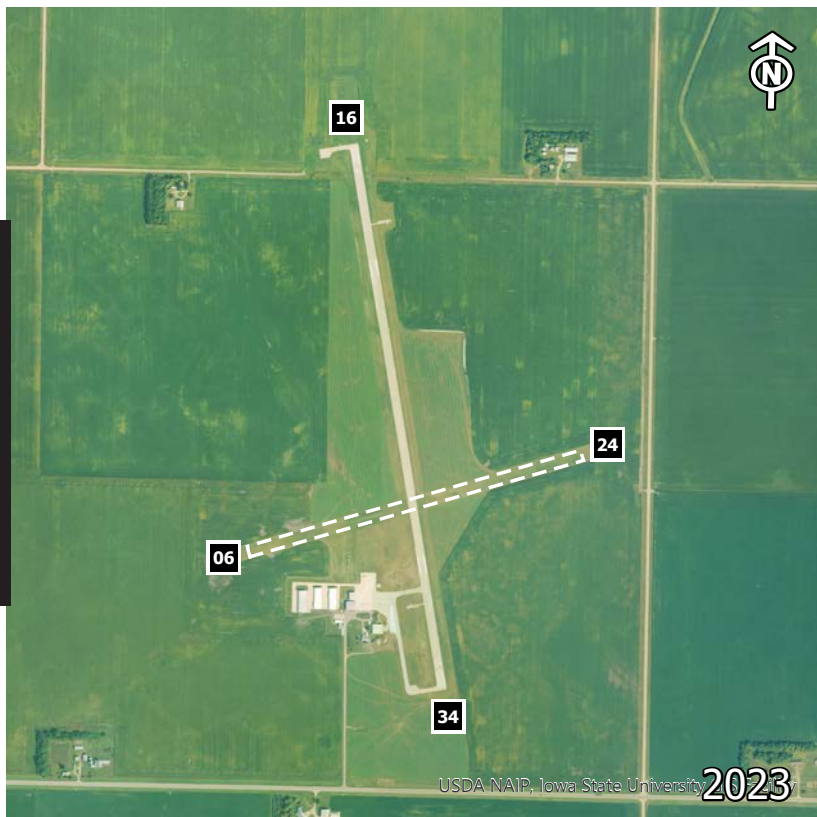
## MANAGER

PAUL SLAUGHTER  
712-362-2761

## OPERATORS

ESTHERVILLE AVIATION INC.  
712-362-2761

ESTHERVILLE



RWY	SURFACE	LENGTH	WIDTH	LIGHTING		VGS	
				RUNWAY	APPROACH		
16/34	CONC	4797	75	MIRL	REIL/REIL	P4L/P4L	
06/24	*TURF	2989	90	NONE	NONE/NONE	NONE/NONE	
CTAF	UNICOM	LGTS	GROUND	TOWER	APPROACH	WEATHER	CLNC DEL
122.975	122.975	122.975			127.75 ZMP	121.425 712-362-7250	

## REMARKS:

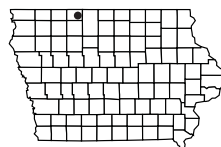
\*RWY 06/24 CLOSED NOV-APRIL

## FUEL

100LL/JETA

## BEACON

YES





# FAIRFIELD MUNICIPAL (FFL)

**LAT:** 41-03-12      **LONG:** 91-58-55      **POPULATION:** 9,602  
**ELEVATION:** 801 FEET      **FROM CITY:** 3 MILE NW      **ADDRESS:** 2013 AIRPORT RD

**HOURS**  
 MON-FRI 0730-1700  
 SAT-SUN ON CALL

**MANAGER**  
 ROBERT LYONS  
 641-919-1865  
 641-472-3166

**OPERATORS**  
 FAIRFIELD FLYING SERVICE  
 641-472-3166



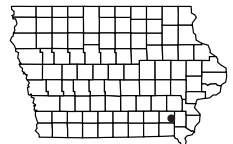
**FAIRFIELD**

RWY	SURFACE	LENGTH	WIDTH	LIGHTING		VGS	
				RUNWAY	APPROACH		
08/26	*TURF	2505	140	NONE	NONE/NONE	NONE/NONE	
18/36	CONC	5503	100	MIRL	REIL/REIL	P4L/P4L	
CTAF	UNICOM	LGTS	GROUND	TOWER	APPROACH	WEATHER	CLNC DEL
122.70	122.70	122.70			118.15 ZAU	132.025 641-472-4548	

**REMARKS:**  
 \*RWY 08/26 CLOSED NOV-MARCH  
 AFTER HOURS CALL: 641-919-1865

**FUEL**  
 100LL/JETA

**BEACON**  
 YES





# FOREST CITY MUNICIPAL – TRIMBLE FIELD (FXY)

LAT: 43-14-08

LONG: 93-37-30

POPULATION: 4,362

ELEVATION: 1229 FEET

FROM CITY: 2 MILE S

ADDRESS: 1842 330TH ST

## HOURS

SUMMER

MON-FRI 0800-1730

WINTER

MON-FRI 0800-1700

## MANAGER

RICHARD TRIMBLE

641-581-2880

## OPERATORS

FOREST CITY AVIATION

641-581-2880

FOREST CITY



RWY	SURFACE	LENGTH	WIDTH	LIGHTING		VGSI	
				RUNWAY	APPROACH		
09/27	ASPH	2707	60	MIRL	NONE/NONE	NONE/NONE	
15/33	ASPH	5796	100	MIRL	REIL/REIL	V4L/V4L	
CTAF	UNICOM	LGTS	GROUND	TOWER	APPROACH	WEATHER	CLNC DEL
122.80	122.80	122.80			127.30 ZMP	123.925 641-581-2347	

## REMARKS:

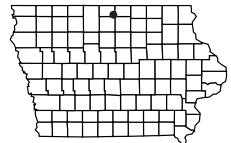
CALL AHEAD TO CHECK FOR COURTESY CAR AVAILABILITY

## FUEL

100LL/JETA

## BEACON

YES



# FORT DODGE REGIONAL (FOD)

**LAT:** 42-32-04      **LONG:** 94-11-31      **POPULATION:** 25,206  
**ELEVATION:** 1157 FEET      **FROM CITY:** 2 MILE N      **ADDRESS:** 1639 NELSON AVE

**HOURS**  
 MON-FRI 0700-1800  
 SAT-SUN 0800-1600

**MANAGER**  
 RHONDA CHAMBERS  
 515-573-3881

**OPERATORS**  
 FORT DODGE FLIGHT SUPPORT  
 515-955-3434



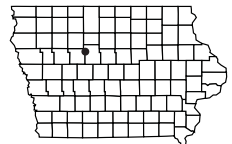
**FORT DODGE**

RWY	SURFACE	LENGTH	WIDTH	LIGHTING		VGS	
				RUNWAY	APPROACH		
06/24	ASPH	6547	150	HIRL	MALSR/NONE	P4L/V4L	
12/30	ASPH	5301	100	MIRL	NONE/NONE	V4L/P4L	
CTAF	UNICOM	LGTS	GROUND	TOWER	APPROACH	WEATHER	CLNC DEL
123.00	123.00	123.00			134.00 ZMP	118.775 515-955-5490	

**REMARKS:**  
 FSS 122.3, 122.2  
 FULL SERVICE DURING DAILY HOURS  
 24-HOUR SELF-SERVE 100LL/JETA  
 AFTER HOURS SERVICE AVAILABLE:  
 515-570-6206

**FUEL**  
 100LL/JETA

**BEACON**  
 YES



# FORT MADISON MUNICIPAL (FSW)

**LAT:** 40-39-33

**LONG:** 91-19-33

**POPULATION:** 11,476

**ELEVATION:** 722 FEET

**FROM CITY:** 2 MILE N

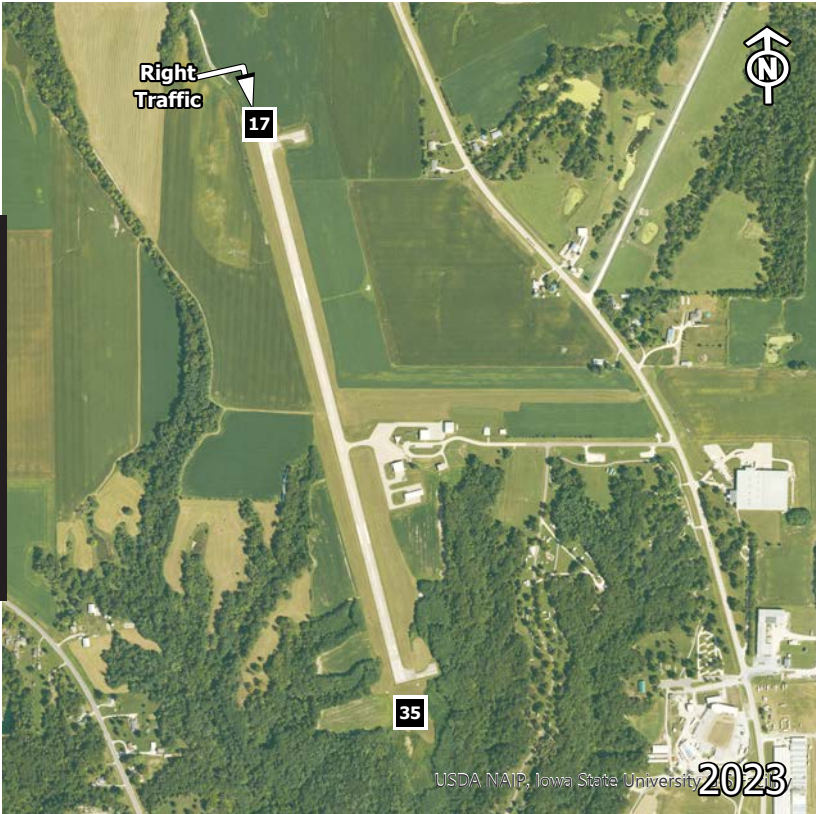
**ADDRESS:** 50 AIRPORT RD

**HOURS  
ON CALL**

**MANAGER**  
DAVE WOODLEY  
319-316-2234

**OPERATORS**  
NONE

**FORT MADISON**

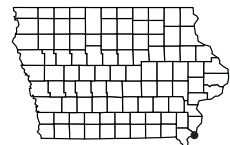


RWY	SURFACE	LENGTH	WIDTH	LIGHTING		VGSI	
				RUNWAY	APPROACH		
17/35	CONC	4000	75	MIRL	NONE/REIL	NONE/P2L	
CTAF	UNICOM	LGTS	GROUND	TOWER	APPROACH	WEATHER	CLNC DEL
122.80	122.80	122.80			135.60 ZAU	120.925 319-372-5147	

**REMARKS:**  
SELF SERVICE CREDIT CARD  
FUEL

**FUEL**  
100LL

**BEACON**  
YES





# GREENFIELD MUNICIPAL (GFZ)

**LAT:** 41-19-38      **LON:** 94-26-44      **POPULATION:** 1,982  
**ELEVATION:** 1364 FEET      **FROM CITY:** 2 MILE NE      **ADDRESS:** 2251 AIRPORT RD

**HOURS**  
UNATTENDED

**MANAGER**  
BRIAN HOADLEY  
641-743-2183

**OPERATORS**  
NONE



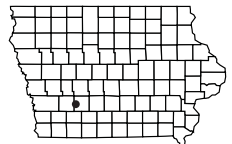
**GREENFIELD**

RWY	SURFACE	LENGTH	WIDTH	LIGHTING		VGS	
				RUNWAY	APPROACH		
14/32*	CONC	2500	50	NONE	NONE/NONE	NONE/NONE	
07/25	CONC	3400	60	MIRL	NONE/NONE	NONE/NONE	
CTAF	UNICOM	LGTS	GROUND	TOWER	APPROACH	WEATHER	CLNC DEL
122.90		122.90			125.65 ZMP		

**REMARKS:**  
RC AIRCRAFT ACTIVITY INVOL  
RWY 32 THRESHOLD  
DISPLACED 250'

**FUEL**  
100LL

**BEACON**  
YES



# GRINNELL REGIONAL (GGI)

**LAT:** 41-42-36  
**ELEVATION:** 1008 FEET

**LON:** 92-44-10  
**FROM CITY:** 1 MILE S

**POPULATION:** 9,105  
**ADDRESS:** 1607 W ST SOUTH

**HOURS**  
MON-FRI  
0800-1700

**MANAGER**  
RON LOWRY  
641-236-0188

**OPERATORS**  
LOWRY FLYING SERVICE INC.  
641-236-0188  
AIRCRAFT MAINTENANCE  
FLYING D WORKS  
515-537-3788

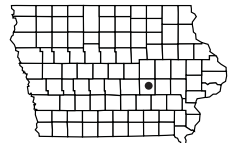
**GRINNELL**



RWY	SURFACE	LENGTH	WIDTH	LIGHTING		VGSI	
				RUNWAY	APPROACH		
13/31	CONC	5200	75	MIRL	REIL/REIL	P2L/P2L	
CTAF	UNICOM	LGTS	GROUND	TOWER	APPROACH	WEATHER	CLNC DEL
122.80	122.80	122.80			127.05 ZAU	120.725 641-236-9720	

**REMARKS:**  
24-HOUR FUEL  
CALL: 641-236-0188  
RCO - 122.35

**FUEL**  
100LL/JETA  
**BEACON**  
YES





# GRUNDY CENTER MUNICIPAL (6K7)

**LAT:** 42-21-02  
**ELEVATION:** 1075 FEET

**LONG:** 92-50-30  
**FROM CITY:** 3 MILE W

**POPULATION:** 2,706  
**ADDRESS:** 19220 240TH ST

**HOURS**  
UNATTENDED

**MANAGER**  
DAN BANGASSER  
319-825-6118

**OPERATORS**  
NONE



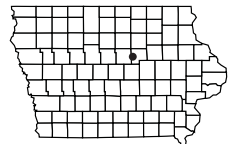
**GRUNDY CENTER**

RWY	SURFACE	LENGTH	WIDTH	LIGHTING		VGS	
				RUNWAY	APPROACH		
17/35	TURF	2250	60	NONE	NONE/NONE	NONE/NONE	
CTAF	UNICOM	LGTS	GROUND	TOWER	APPROACH	WEATHER	CLNC DEL
122.90							

**REMARKS:**  
CLOSED DURING WINTER  
RC AIRCRAFT ACTIVITY INVOL

**FUEL**  
NONE

**BEACON**  
NO



# GUTHRIE COUNTY REGIONAL (GCT)

**LAT:** 41-41-13

**LONG:** 94-26-06

**POPULATION:** 1,668

**ELEVATION:** 1221 FEET

**FROM CITY:** 3 MILE E

**ADDRESS:** 2607 HIGHWAY 44

**HOURS**  
UNATTENDED

**MANAGER**  
MARSHALL  
BURGESS  
641-757-2046

**OPERATORS**  
NONE

**GUTHRIE CENTER**

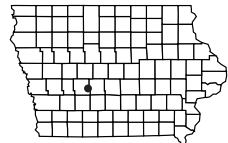


RWY	SURFACE	LENGTH	WIDTH	LIGHTING		VGSI	
				RUNWAY	APPROACH		
18/36	CONC	3400	60	MIRL	REIL/REIL	P2L/P2L	
CTAF	UNICOM	LGTS	GROUND	TOWER	APPROACH	WEATHER	CLNC DEL
122.80	122.80	122.80					

**REMARKS:**  
COURTESY CAR CALL:  
641-757-2046 TO CHECK AVAILABILITY

**FUEL**  
100LL

**BEACON**  
YES



# HAMPTON MUNICIPAL (HPT)

**LAT:** 42-43-25  
**ELEVATION:** 1176 FEET

**LONG:** 93-13-35  
**FROM CITY:** 1 MILE SW

**POPULATION:** 4,218  
**ADDRESS:** 1274 B OLIVE RD

**HOURS**  
MON-FRI 0800-1700

**MANAGER**  
JAY SCHUMANN  
641-456-4102

**OPERATORS**  
SCHUMANN AVIATION  
641-456-9000



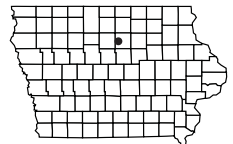
**HAMPTON**

RWY	SURFACE	LENGTH	WIDTH	LIGHTING		VGS	
				RUNWAY	APPROACH		
17/35	CONC	4020	75	MIRL	REIL/REIL	P2L/P2L	
CTAF	UNICOM	LGTS	GROUND	TOWER	APPROACH	WEATHER	CLNC DEL
122.70	122.70	122.70			134.00 ZMP	121.025 641-456-4055	

**REMARKS:**  
SELF SERVICE CREDIT CARD  
FUEL  
AFTER HOURS CALL: 641-456-3409

**FUEL**  
100LL

**BEACON**  
YES



# HARLAN MUNICIPAL (HNR)

**LAT:** 41-35-03  
**ELEVATION:** 1231 FEET

**LONG:** 95-20-23  
**FROM CITY:** 5 MILE S

**POPULATION:** 5,106  
**ADDRESS:** 610 HIGHWAY 59

**HOURS**  
 SAT-SUN ON CALL  
 SUMMER MON-FRI 0800-1700  
 WINTER MON-FRI 0800-1600

**MANAGER**  
 SCOTT PIGSLEY (AIRPORT)  
 712-744-3366

**OPERATORS**  
 SNP AVIATION, LLC  
 712-744-3366

**HARLAN**

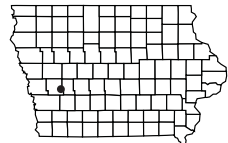


RWY	SURFACE	LENGTH	WIDTH	LIGHTING		VGSI	
				RUNWAY	APPROACH		
03/21	TURF	1712	120	NONE	NONE/NONE	NONE/NONE	
15/33	ASPH-CONC	4100	75	MIRL	REIL/REIL	P2L/P2L	
CTAF	UNICOM	LGTS	GROUND	TOWER	APPROACH	WEATHER	CLNC DEL
122.80	122.80	122.80			124.50 OMA	118.325 712-744-4400	

**REMARKS:**  
 NONE

**FUEL**  
 100LL/JETA

**BEACON**  
 YES





# HUMBOLDT MUNICIPAL (0K7)

**LAT:** 42-44-06      **LONG:** 94-14-44      **POPULATION:** 4,960  
**ELEVATION:** 1098 FEET      **FROM CITY:** 1 MILE W      **ADDRESS:** 2601 220TH ST

**HOURS**  
UNATTENDED

**MANAGER**  
DAVE DODGEN  
515-368-1714

**OPERATORS**  
LAST PASS AVIATION  
308-760-4541



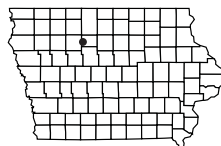
**HUMBOLDT**

RWY	SURFACE	LENGTH	WIDTH	LIGHTING		VGS	
				RUNWAY	APPROACH		
12/30	ASPH	3417	60	MIRL	REIL/REIL	P2L/P2L	
CTAF	UNICOM	LGTS	GROUND	TOWER	APPROACH	WEATHER	CLNC DEL
122.80	122.80	122.80					

**REMARKS:**  
 ALT NUMBER: 515-368-1714  
 24 HR SELF-SERVE FUEL  
 PHONE AND WIFI IN 24 HR TERMINAL  
 TIE DOWNS AND PLUG IN AVAILABLE  
 CODE ENTRY AFTER SUNSET 1228\*

**FUEL**  
100LL  
  
**BEACON**  
YES

**57**





# IDA GROVE MUNICIPAL (IDG)

**LAT:** 42-19-57

**LONG:** 95-26-42

**POPULATION:** 2,142

**ELEVATION:** 1245 FEET

**FROM CITY:** 2 MILE SE

**ADDRESS:** 2573 HIGHWAY 59

**HOURS**  
UNATTENDED

**MANAGER**  
HEATHER SWEEDEN  
712-364-2428

**OPERATORS**  
NONE

**IDA GROVE**



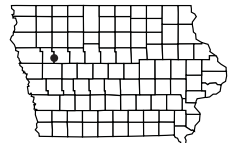
RWY	SURFACE	LENGTH	WIDTH	LIGHTING		VGSI	
				RUNWAY	APPROACH		
*12/30*	ASPH	3172	50	LIRL	NONE/NONE	NONE/NONE	
CTAF	UNICOM	LGTS	GROUND	TOWER	APPROACH	WEATHER	CLNC DEL
122.80	122.80	122.80					

**REMARKS:**

\*RWY 12 THRESHOLD DISPLACED 350'  
\*RWY 30 THRESHOLD DISPLACED 290'  
CAUTION 600' MODEL AIRPLANE RWY  
1/2 MILE NORTH OF AIRPORT

**FUEL**  
NONE

**BEACON**  
YES



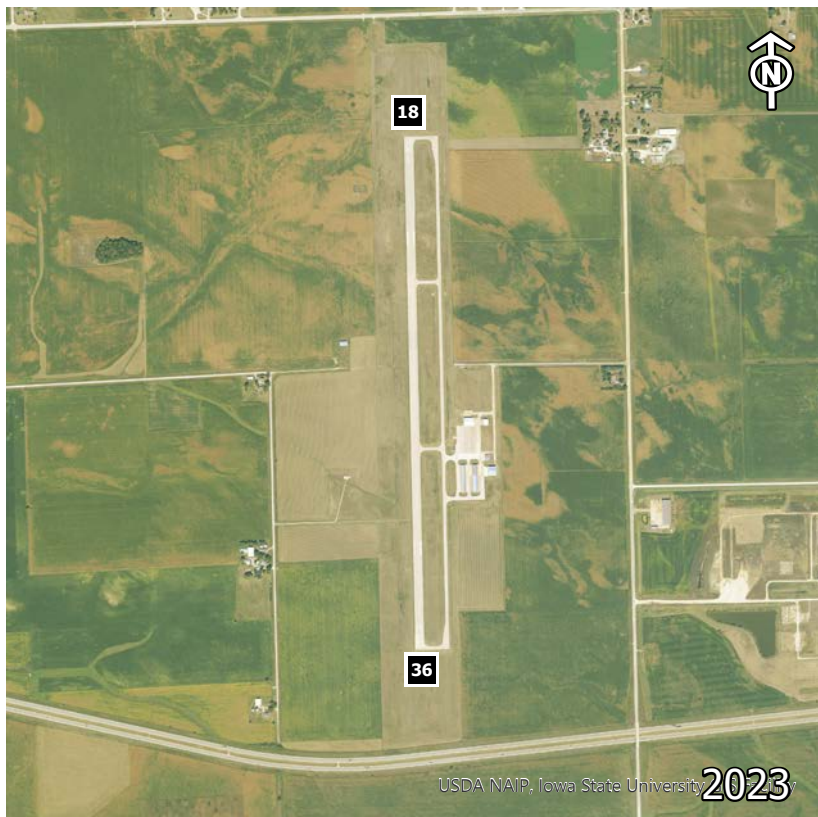
# JAMES H CONNELL FLD AT INDEPENDENCE MUNI (IIB)

**LAT:** 42-27-13      **LONG:** 91-56-51      **POPULATION:** 6,014  
**ELEVATION:** 979 FEET      **FROM CITY:** 2 MILE W      **ADDRESS:** 1684 - 230TH STREET

**HOURS**  
0800-1630

**MANAGER**  
BRETT SOUKUP  
319-332-0118

**OPERATORS**  
P & N FLIGHT AND CHARTER  
319-777-9488

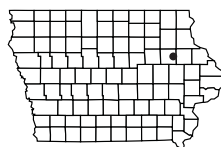


RWY	SURFACE	LENGTH	WIDTH	LIGHTING		VGS	
				RUNWAY	APPROACH		
18/36	CONC	5500	100	MIRL	REIL/REIL	P2L/P2L	
CTAF	UNICOM	LGTS	GROUND	TOWER	APPROACH	WEATHER	CLNC DEL
122.80	122.80	122.80			118.90 ALO	120.825 319-334-3879	

**REMARKS:**  
AVAILABLE OTHER TIMES UPON  
REQUEST

**FUEL**  
100LL/JETA

**BEACON**  
YES



# IOWA CITY MUNICIPAL (IOW)

**LAT:** 41-38-19

**LONG:** 91-32-47

**POPULATION:** 62,380

**ELEVATION:** 684 FEET

**FROM CITY:** 2 MILE SW

**ADDRESS:** 1801 S RIVERSIDE

**HOURS**

SUMMER 0700-2100

WINTER 0700-1900

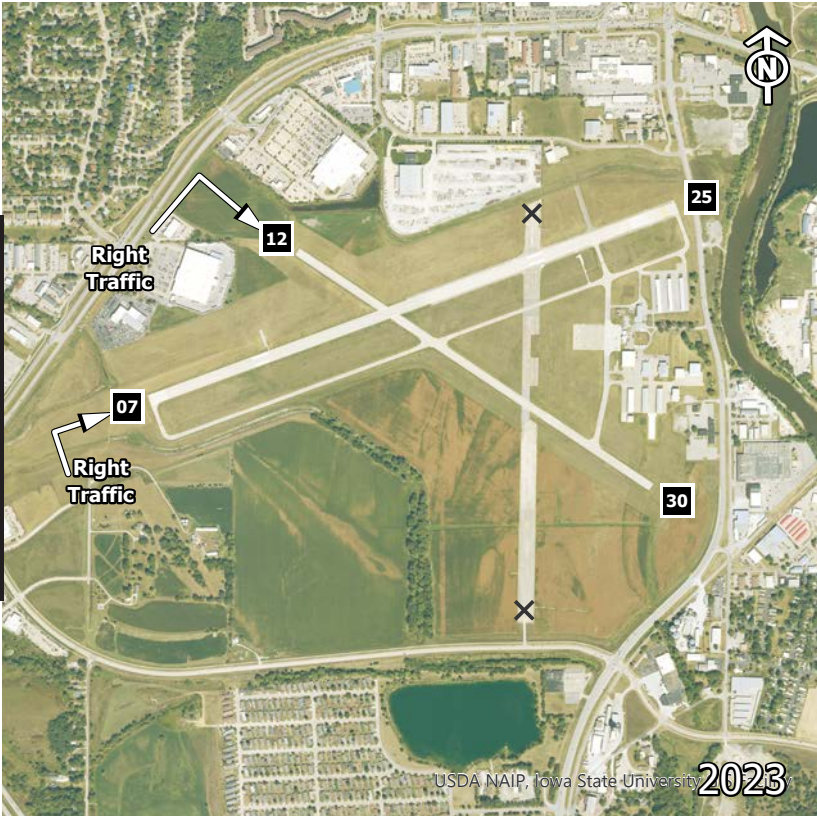
**MANAGER**

MICHAEL THARP  
319-356-5045

**OPERATORS**

JET AIR  
319-248-1200

**IOWA CITY**



RWY	SURFACE	LENGTH	WIDTH	LIGHTING		VGS	
				RUNWAY	APPROACH		
07/25* 12/30	CONC CONC	5002 4200	100 75	MIRL MIRL	REIL/REIL NONE/NONE	P4L/P4L NONE/P2L	
CTAF	UNICOM	LGTS	GROUND	TOWER	APPROACH	WEATHER	CLNC DEL
122.80	122.80	122.80			119.70 CID	128.075 319-339-9491	119.05

**REMARKS:**

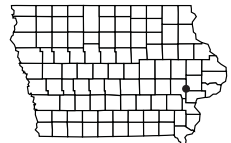
- \*RWY 25 THRESHOLD DISPLACED 130'
- \*RWY 12 THRESHOLD DISPLACED 500'
- \*RWY 30 THRESHOLD DISPLACED 300'
- NOISE SENSITIVE AREA N AND NW STADIUM WITHIN 3NM
- RWY 25 IS A CALM WIND RUNWAY

**FUEL**

100LL/JETA

**BEACON**

YES





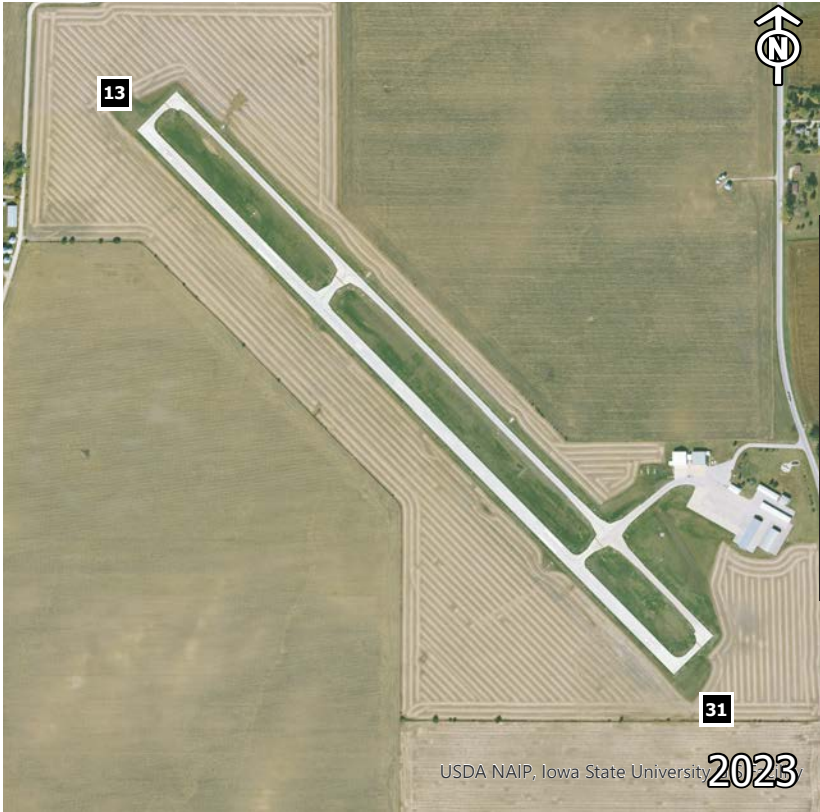
# IOWA FALLS MUNICIPAL (IFA)

**LAT:** 42-28-15    **LONG:** 93-16-12    **POPULATION:** 5,193  
**ELEVATION:** 1137 FEET    **FROM CITY:** 3 MILE S    **ADDRESS:** 16041 HIGHWAY 65

**HOURS**  
 MON-FRI  
 0800-1600

**MANAGER**  
 RENA HEEM  
 641-648-3191

**OPERATORS**  
 TOUCH N' GO AVIATION  
 515-290-5450



**IOWA FALLS**

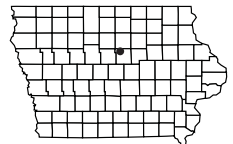
RWY	SURFACE	LENGTH	WIDTH	LIGHTING		VGS	
				RUNWAY	APPROACH		
13/31	ASPH	4600	75	MIRL	REIL/REIL	P2L/P2L	
CTAF	UNICOM	LGTS	GROUND	TOWER	APPROACH	WEATHER	CLNC DEL
122.80	122.80	122.80			118.90 ALO	120.425 641-648-2469	

**REMARKS:**

**FUEL**  
 100LL/JETA

**BEACON**  
 YES

**61**





# JEFFERSON MUNICIPAL (EFW)

**LAT:** 42-00-39  
**ELEVATION:** 1047 FEET

**LONG:** 94-20-31  
**FROM CITY:** 2 MILE E

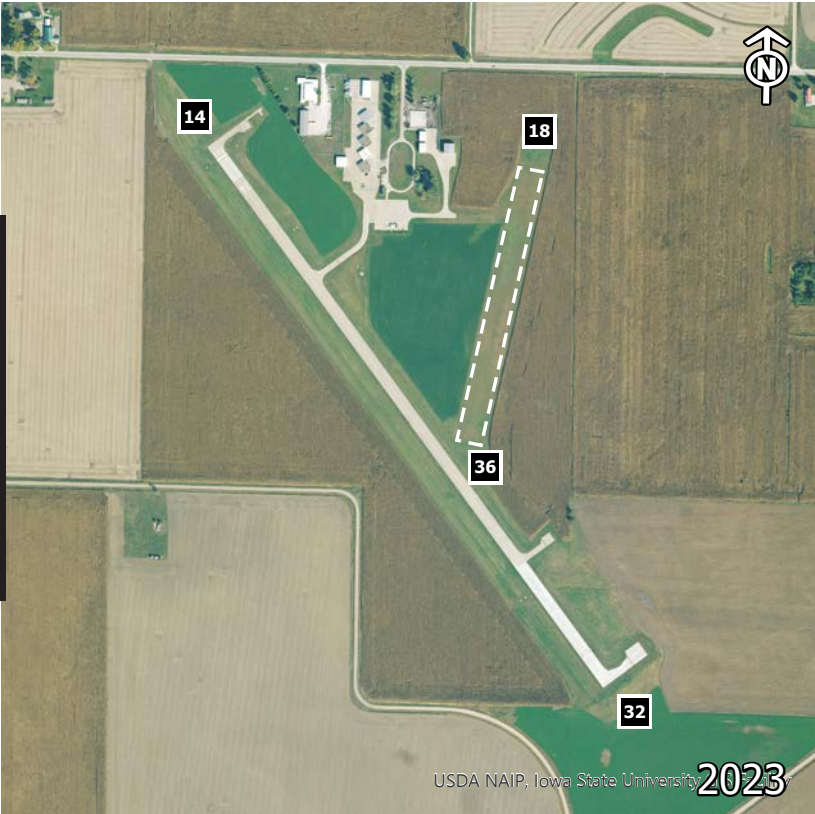
**POPULATION:** 4,626  
**ADDRESS:** 1579 235TH ST

**HOURS**  
MON-FRI 0800-1700

**MANAGER**  
CITY HALL  
515-386-4429  
515-386-3111

**OPERATORS**

**JEFFERSON**

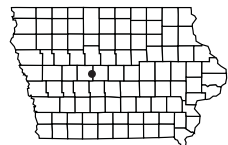


RWY	SURFACE	LENGTH	WIDTH	LIGHTING		VGSI	
				RUNWAY	APPROACH		
14/32	CONC	4100	75	MIRL	REIL/REIL	P2L/P2L	
18/36	TURF	1696	150	NONE	NONE/NONE	NONE/NONE	
CTAF	UNICOM	LGTS	GROUND	TOWER	APPROACH	WEATHER	CLNC DEL
122.80	122.80	122.80			134.00 ZMP		

**REMARKS:**  
AG AND RC AIRCRAFT INVOF  
24-HOUR SELF SERVE FUEL

**FUEL**  
100LL

**BEACON**  
YES



# KEOKUK MUNICIPAL (EOK)

**LAT:** 40-27-35

**LONG:** 91-25-45

**POPULATION:** 10,780

**ELEVATION:** 672 FEET

**FROM CITY:** 4 MILE NW

**ADDRESS:** 2504 340TH ST

**HOURS**

MON-FRI 0800-1630

**MANAGER**

RAYMOND OTT  
319-524-6203 (OFFICE)  
319-371-9998 (CELL)

**OPERATORS**

CITY OF KEOKUK



**KEOKUK**

RWY	SURFACE	LENGTH	WIDTH	LIGHTING		VGS	
				RUNWAY	APPROACH		
08/26	CONC	5500	100	MIRL	NONE/MALSR	P4L/P4L	
14/32	CONC	3576	100	MIRL	NONE/NONE	V4L/P4L	
CTAF	UNICOM	LGTS	GROUND	TOWER	APPROACH	WEATHER	CLNC DEL
122.80	122.80	122.80			135.525 ZKC	118.375 319-524-7884	122.30

**REMARKS:**

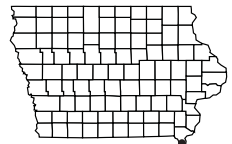
AFTER HOURS FUEL AND MAINTENANCE 100LL/JETA  
AVAILABLE, CALL: 319-371-9998  
CALM WIND RWY 26

**FUEL**

100LL/JETA

**BEACON**

YES



# KEOSAUQUA MUNICIPAL (6K9)

**LAT:** 40-44-00  
**ELEVATION:** 580 FEET

**LONG:** 91-56-59  
**FROM CITY:** 1 MILE E

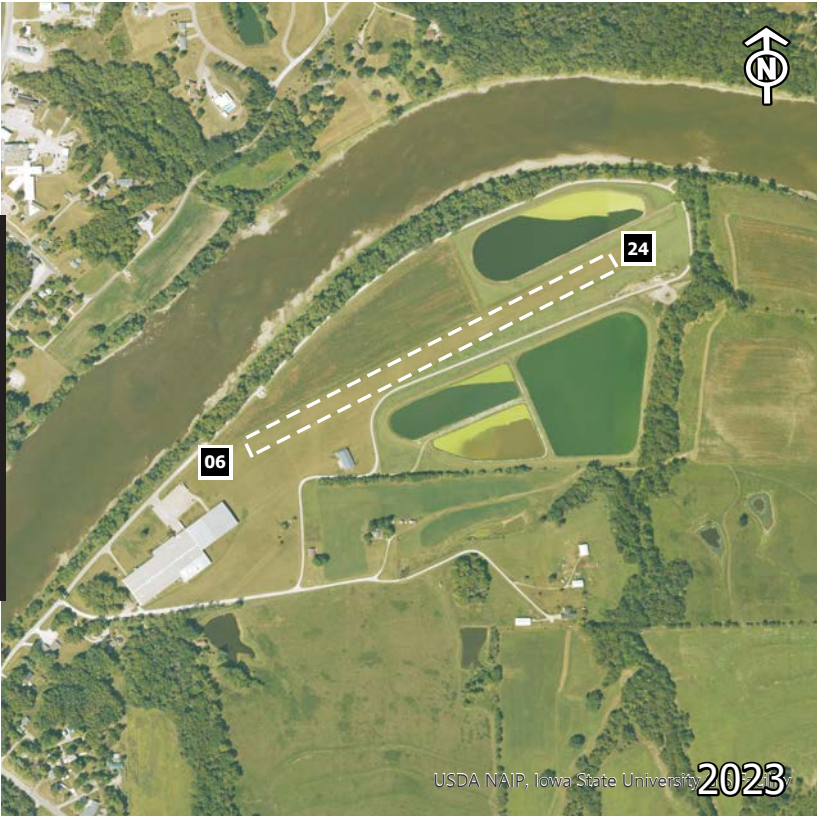
**POPULATION:** 936  
**ADDRESS:** 1000 WATER ST

**HOURS**  
0900-1700

**MANAGER**  
RICK MICHALEK  
319-931-2705

**OPERATORS**  
OLDFIELD AERO SERVICES  
319-931-2705

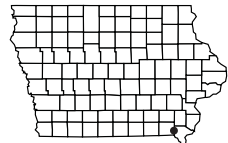
**KEOSAUQUA**



RWY	SURFACE	LENGTH	WIDTH	LIGHTING		VGSI	
				RUNWAY	APPROACH		
*06/24*	TURF	2275	100	NONE	NONE/NONE	NONE/NONE	
CTAF	UNICOM	LGTS	GROUND	TOWER	APPROACH	WEATHER	CLNC DEL
122.90	122.90						

**REMARKS:**  
\*RWY 06 THRESHOLD DISPLACED 395'  
\*RWY 24 THRESHOLD DISPLACED 1000'  
GROUND TRANSPORTATION AVAILABLE

**FUEL**  
NONE  
**BEACON**  
NO





# KNOXVILLE MUNICIPAL (OXV)

LAT: 41-17-57

LONG: 93-06-49

POPULATION: 7,731

ELEVATION: 928 FEET

FROM CITY: 2 MILE S

ADDRESS: 1545 HIGHWAY 14

## HOURS

DAWN-DUSK

## MANAGER

KATHERINE SHAWVER  
641-891-6824

## OPERATORS

KNOXVILLE AVIATION  
641-842-4423



KNOXVILLE

RWY	SURFACE	LENGTH	WIDTH	LIGHTING		VGS	
				RUNWAY	APPROACH		
15/33	CONC	4000	75	MIRL	REIL/REIL	P2L/P2L	
CTAF	UNICOM	LGTS	GROUND	TOWER	APPROACH	WEATHER	CLNC DEL
122.80	122.80	122.80			123.90 DSM	119.775 641-828-8406	

## REMARKS:

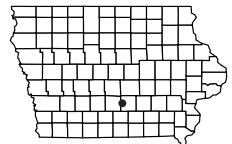
AFTER HOURS SERVICE,  
CALL: 641-891-6824

## FUEL

100LL/JETA

## BEACON

YES





# LAKE MILLS MUNICIPAL (0Y6)

**LAT:** 43-24-50  
**ELEVATION:** 1260 FEET

**LONG:** 93-30-43  
**FROM CITY:** 1 MILE E

**POPULATION:** 2,100  
**ADDRESS:** 24304 445TH ST

**HOURS**  
 UNATTENDED

**MANAGER**  
 BRAD WEMPEN  
 641-592-2441

**OPERATORS**  
 NONE

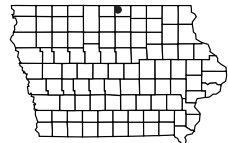
**LAKE MILLS**



RWY	SURFACE	LENGTH	WIDTH	LIGHTING		VGSI	
				RUNWAY	APPROACH		
18/36*	*TURF	3380	100	LIRL	NONE/NONE	NONE/NONE	
CTAF	UNICOM	LGTS	GROUND	TOWER	APPROACH	WEATHER	CLNC DEL
122.90							

**REMARKS:**  
 \*RWY 36 THRESHOLD DISPLACED 190'  
 \*CLOSED DEC-MARCH

**FUEL**  
 NONE  
**BEACON**  
 YES



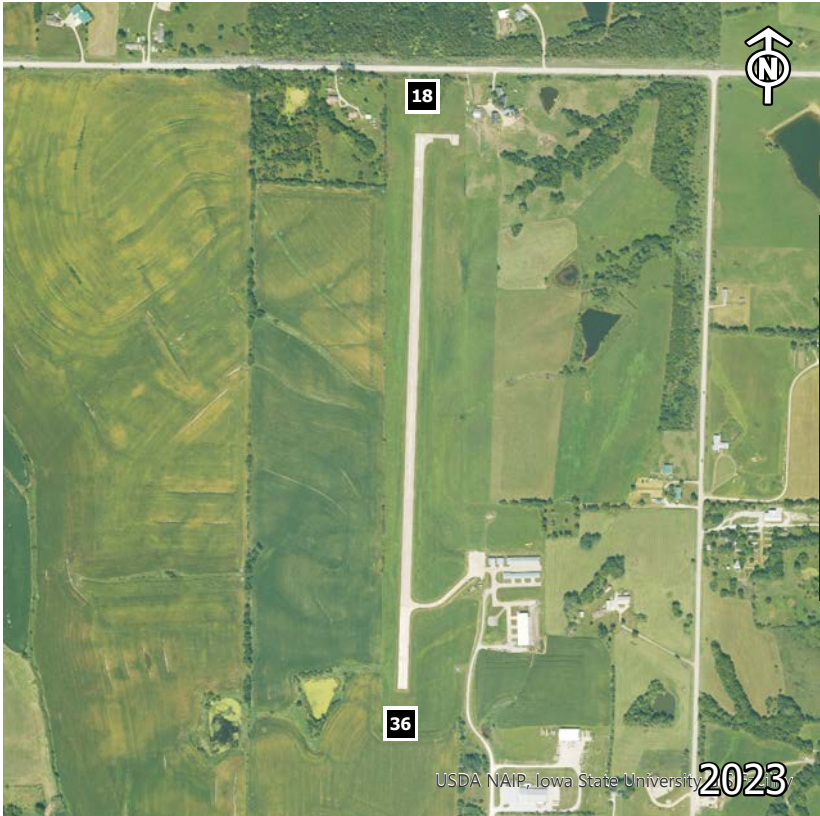
# LAMONI MUNICIPAL (LWD)

**LAT:** 40-37-59      **LONG:** 93-54-08      **POPULATION:** 2,444  
**ELEVATION:** 1131 FEET      **FROM CITY:** 2 MILE NE      **ADDRESS:** 28577 AIRPORT RD

**HOURS**  
UNATTENDED

**MANAGER**  
JORDAN OMSTEAD  
719-648-9924

**OPERATORS**  
NONE



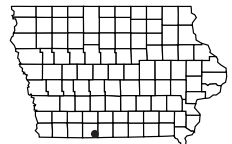
**LAMONI**

RWY	SURFACE	LENGTH	WIDTH	LIGHTING		VGS	
				RUNWAY	APPROACH		
18/36	CONC	3400	60	MIRL	NONE/NONE	NONE/NONE	
CTAF	UNICOM	LGTS	GROUND	TOWER	APPROACH	WEATHER	CLNC DEL
122.90		122.90				120.00 641-784-8122	

**REMARKS:**  
 24 HR SELF-SERVE FUEL; PILOT'S LOUNGE  
 WITH REST ROOM; COURTESY CAR  
 TRANSIENT HANGARS AVAILABLE WITH  
 PRIOR COORDINATION  
 RESTAURANTS AND HOTELS 1/2 MILE  
 FROM TERMINAL AREA

**FUEL**  
100LL

**BEACON**  
YES



# LARCHWOOD - ZANGGER VINTAGE AIRPARK (2VA)

**LAT:** 43-27-05    **LONG:** 96-24-21    **POPULATION:** 974  
**ELEVATION:** 1478 FEET    **FROM CITY:** 1 MILE E    **ADDRESS:** 1917 135TH ST

**HOURS**  
RESIDENCE ON FIELD

**MANAGER**  
JIM ZANGGER  
712-477-2230  
605-370-1139 (CELL)

**OPERATORS**  
NONE

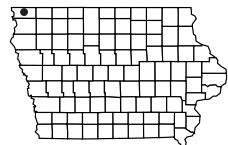
**LARCHWOOD**



RWY	SURFACE	LENGTH	WIDTH	LIGHTING		VGSI	
				RUNWAY	APPROACH		
12/30	TURF	2400	100	LIRL	NONE/NONE	NONE/NONE	
CTAF	UNICOM	LGTS	GROUND	TOWER	APPROACH	WEATHER	CLNC DEL
122.90		123.45					

**REMARKS:**  
 ASPHALT HARD SURFACE USED  
 AS TAXIWAY  
 PRIVATE OWNERSHIP/PUBLIC USE  
 OWNER LIVES ON THE FIELD

**FUEL**  
NONE  
  
**BEACON**  
NO



# LE MARS MUNICIPAL (LRJ)

**LAT:** 42-46-41  
**ELEVATION:** 1197 FEET

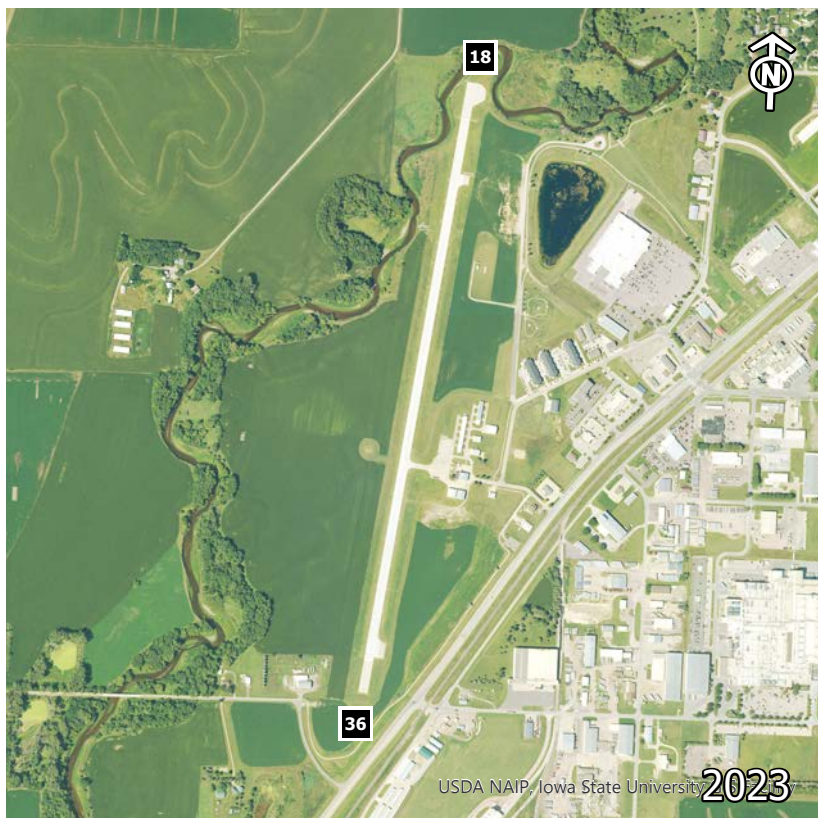
**LONG:** 96-11-37  
**FROM CITY:** 2 MILE SW

**POPULATION:** 10,571  
**ADDRESS:** 1621 AIRPORT DR

**HOURS**  
 MON-FRI 0800-1700  
 SAT 0800-1300

**MANAGER**  
 TOM MULLALLY  
 712-540-1665

**OPERATORS**  
 ULTRA FLIGHT LLC  
 712-540-1665



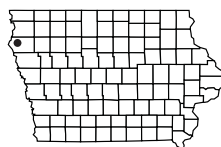
**LE MARS**

RWY	SURFACE	LENGTH	WIDTH	LIGHTING		VGS	
				RUNWAY	APPROACH		
*18/36*	CONC	5056	75	MIRL	REIL/REIL	P2L/S2R	
CTAF	UNICOM	LGTS	GROUND	TOWER	APPROACH	WEATHER	CLNC DEL
122.80	122.80	122.80			124.60 SUX	120.975 712-546-8439	

**REMARKS:**  
 \*RWYS 18 AND 36 THRESHOLD  
 DISPLACED 300'  
 AFTER HOURS FEE: \$35

**FUEL**  
 100LL/JETA

**BEACON**  
 YES





# MANCHESTER MUNICIPAL (C27)

**LAT:** 42-29-26

**LONG:** 91-29-52

**POPULATION:** 5,065

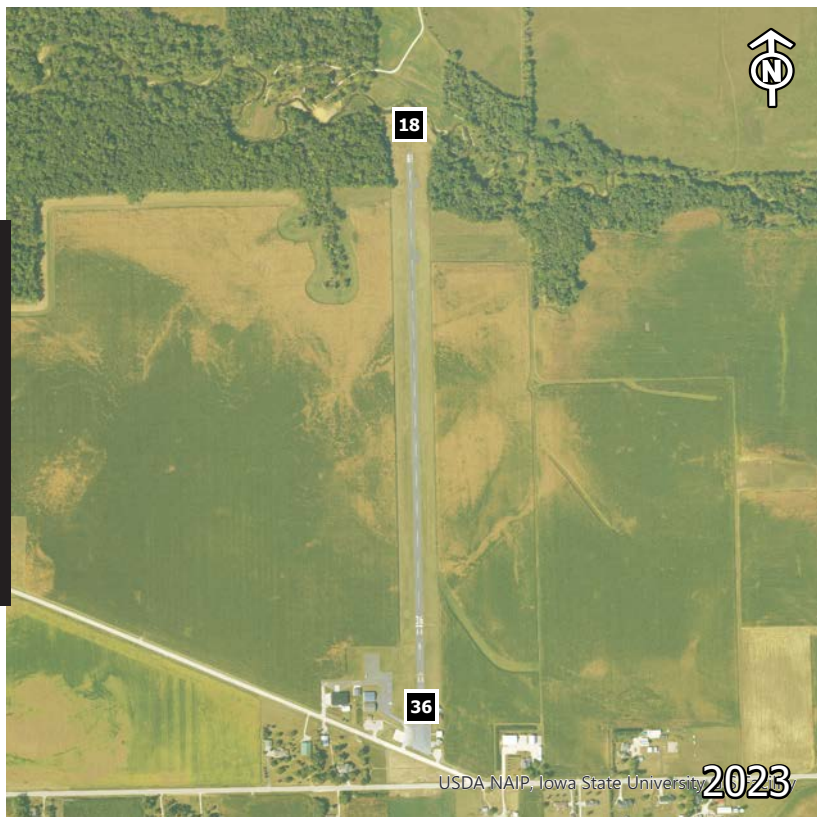
**ELEVATION:** 987 FEET **FROM CITY:** 1 MILE W **ADDRESS:** 1561 EARLY STAGE COACH RD

**HOURS**  
UNATTENDED

**MANAGER**  
TIMOTHY J VICK  
563-927-1116 (PRIMARY)  
563-927-3355 (SECONDARY)

**OPERATORS**  
NONE

**MANCHESTER**

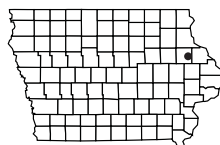


USDA NAIP, Iowa State University 2023

RWY	SURFACE	LENGTH	WIDTH	LIGHTING		VGSI	
				RUNWAY	APPROACH		
18/36*	ASPH	3465	50	LIRL	NONE/NONE	NONE/NONE	
CTAF	UNICOM	LGTS	GROUND	TOWER	APPROACH	WEATHER	CLNC DEL
122.90							

**REMARKS:**  
\*RWY 36 THRESHOLD DISPLACED 305'  
UNATTENDED WELCOME CENTER  
LIGHT SPORT ACTIVITY INVOF  
SELF-SERVICE CREDIT CARD FUEL  
BE ALERT FOR DEER INVOF

**FUEL**  
100LL  
**BEACON**  
YES



# MAPLETON - JAMES G WHITING MEMORIAL FIELD (MEY)

**LAT:** 42-10-42     **LONG:** 95-47-37     **POPULATION:** 1,322  
**ELEVATION:** 1116 FEET     **FROM CITY:** 1 MILE N     **ADDRESS:** 38483 HIGHWAY 175

**HOURS**  
 MON-FRI 0800-1700

**MANAGER**  
 AIRPORT MANAGER  
 712-881-1351

**OPERATORS**  
 NONE



MAPLETON

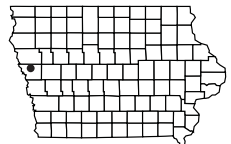
RWY	SURFACE	LENGTH	WIDTH	LIGHTING		VGS	
				RUNWAY	APPROACH		
02/20	CONC	2801	60	MIRL	NONE/REIL	NONE/NONE	
CTAF	UNICOM	LGTS	GROUND	TOWER	APPROACH	WEATHER	CLNC DEL
122.80	122.80	122.80			124.60 SUX		

**REMARKS:**  
 NONE

**FUEL**  
 100LL

**BEACON**  
 YES

71



# MAQUOKETA MUNICIPAL (OQW)

**LAT:** 42-03-00  
**ELEVATION:** 769 FEET

**LONG:** 90-44-20  
**FROM CITY:** 3 MILE W

**POPULATION:** 6,141  
**ADDRESS:** 2215 134TH AVE

**HOURS**  
UNATTENDED

**MANAGER**  
JON HOPSON  
563-652-2484

**OPERATORS**  
NONE

**MAQUOKETA**

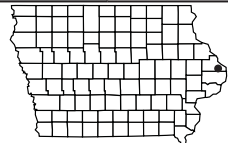


RWY	SURFACE	LENGTH	WIDTH	LIGHTING		VGSI	
				RUNWAY	APPROACH		
15/33	CONC	3304	60	MIRL	NONE/NONE	P2L/P2L	
CTAF	UNICOM	LGTS	GROUND	TOWER	AP-PROACH	WEATHER	CLNC DEL
122.725	122.725	122.725			133.95 ZAU		

**REMARKS:**  
ULTRALIGHT AIRCRAFT ACTIVITY INVOLF  
AFTER HOURS SERVICE: 563-652-2468  
RWY 33 CALM WIND RWY  
PILOT CONTROLLED LIGHTING:  
5 CLICKS ON; 7 CLICKS OFF

**FUEL**  
100LL

**BEACON**  
YES



# MARION (C17)

LAT: 42-01-51

LONG: 91-31-55

POPULATION: 39,400

ELEVATION: 861 FEET

FROM CITY: 1 MILE E

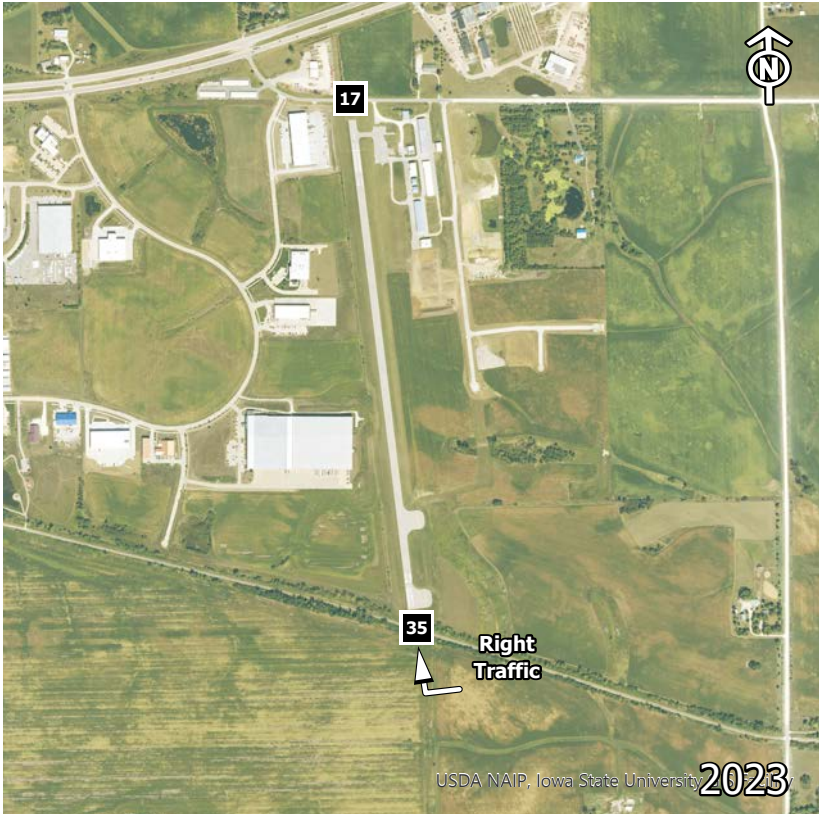
ADDRESS: 1710 MARION AIRPORT RD

**HOURS**  
ALL

**MANAGER**  
SARAH WITTER  
319-377-1111

**OPERATORS**  
LUX AIR AVIATION  
844-589-2376; 319-377-1111

P&N FLIGHT & CHARTER  
319-377-9437



MARION

RWY	SURFACE	LENGTH	WIDTH	LIGHTING		VGS	
				RUNWAY	APPROACH		
*17/35	ASPH	3775	60	MIRL	NONE/NONE	NONE/NONE	
CTAF	UNICOM	LGTS	GROUND	TOWER	APPROACH	WEATHER	CLNC DEL
122.70	122.70	122.70					

**REMARKS:**

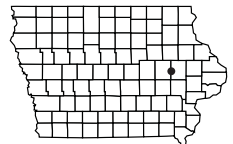
\*RWY 17 THRESHOLD DISPLACED 200'

**FUEL**

100LL/MOGAS/JETA

**BEACON**

NO





# MARSHALLTOWN MUNICIPAL (MIW)

**LAT:** 42-06-46

**LONG:** 92-55-06

**POPULATION:** 26,009

**ELEVATION:** 975 FEET

**FROM CITY:** 4 MILE N

**ADDRESS:** 2651 170TH ST

**HOURS**

0700-1800

**MANAGER**

STEPHEN VALBRACHT  
641-521-6832

**OPERATORS**

MARSHALLTOWN AVIATION  
641-752-0012

**MARSHALLTOWN**

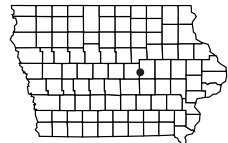


RWY	SURFACE	LENGTH	WIDTH	LIGHTING		VGSI	
				RUNWAY	APPROACH		
13/31	ASPH	5007	100	MIRL	REIL/REIL	V4L/V4L	
18/36	ASPH	2759	50	MIRL	NONE/NONE	NONE/NONE	
CTAF	UNICOM	LGTS	GROUND	TOWER	APPROACH	WEATHER	CLNC DEL
122.80	122.80	122.80			120.90 ALO	128.325 515-752-2339	120.90

**REMARKS:**  
NONE

**FUEL**  
100LL/JETA

**BEACON**  
YES



# MASON CITY MUNICIPAL (MCW)

**LAT:** 43-09-27

**LONG:** 93-19-54

**POPULATION:** 29,172

**ELEVATION:** 1,213 FEET

**FROM CITY:** 5 MILE W

**ADDRESS:** 9184 265TH ST

**HOURS**

0700-1900

**MANAGER**

DAVID SIMS  
641-421-3397

**OPERATORS**

NORTH IOWA AIR SERVICE  
641-424-9366



**MASON CITY**

RWY	SURFACE	LENGTH	WIDTH	LIGHTING		VGS	
				RUNWAY	APPROACH		
18/36	ASPH	6501	150	HIRL	MALS/MALS	V4L/P4L	
12/30	ASPH	5502	150	MIRL	REIL/NONE	P4L/P4L	
CTAF	UNICOM	LGTS	GROUND	TOWER	APPROACH	WEATHER	CLNC DEL
123.00	123.00	123.00			127.30 ZMP	120.300 641-357-8490	

**REMARKS:**

AFTER HOURS SERVICE, CALL:  
641-430-9898

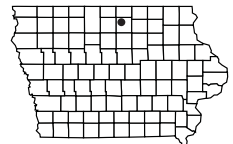
BE ALERT FOR BIRDS INVOF

**FUEL**

100LL/JETA

**BEACON**

YES



# MILFORD MUNICIPAL - FULLER (4D8)

LAT: 43-19-60

LONG: 95-09-33

POPULATION: 2,601

ELEVATION: 1439 FEET

FROM CITY: 1 MILE NW

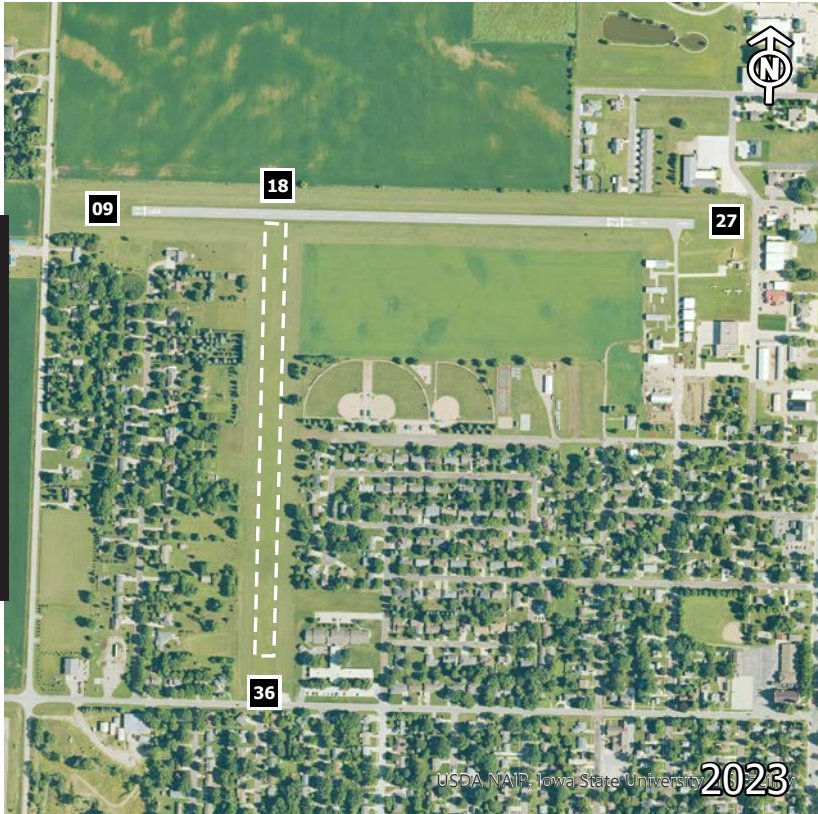
ADDRESS: 2008 N AVE

**HOURS**  
UNATTENDED

**MANAGER**  
CHRIS STEIN  
712-260-4335

**OPERATORS**  
PS AVIATION  
507-847-3599

**MILFORD**



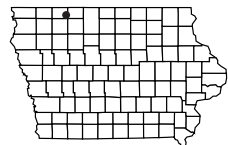
RWY	SURFACE	LENGTH	WIDTH	LIGHTING		VGSI	
				RUNWAY	APPROACH		
18/36 *09/27*	TURF ASPH	2200 2873	100 50	NONE LIRL	NONE/NONE NONE/NONE	NONE/NONE NONE/NONE	
CTAF	UNICOM	LGTS	GROUND	TOWER	APPROACH	WEATHER	CLNC DEL
122.90					127.75 ZMP		

**REMARKS:**

- \*RWY 09 THRESHOLD DISPLACED 60'
- \*RWY 27 THRESHOLD DISPLACED 360'
- \*RWY 09/27 - 2170' OF USABLE LIGHTED RWY FOR NIGHT OPS

**FUEL**  
100LL

**BEACON**  
NO



SELF SERVE FUEL

# MONTEZUMA - SIG FIELD (7C5)

**LAT:** 41-32-55      **LONG:** 92-32-04      **POPULATION:** 1,457  
**ELEVATION:** 929 FEET      **FROM CITY:** 3 MILE S      **ADDRESS:** 5117 HIGHWAY 63

**HOURS**  
UNATTENDED

**MANAGER**  
HAZEL SIG HESTER  
641-623-5179

**OPERATORS**  
NONE



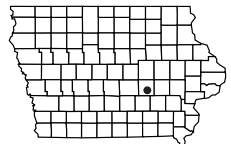
**MONTEZUMA**

RWY	SURFACE	LENGTH	WIDTH	LIGHTING		VGS	
				RUNWAY	APPROACH		
*18/36	TURF	2600	105	NONE	NONE/NONE	NONE/NONE	
CTAF	UNICOM	LGTS	GROUND	TOWER	APPROACH	WEATHER	CLNC DEL
122.90							

**REMARKS:**  
 \*RWY 18 THRESHOLD DISPLACED 400'  
 PRIVATE OWNERSHIP/PUBLIC USE

**FUEL**  
NONE

**BEACON**  
NO





# MONTICELLO MUNICIPAL (MXO)

**LAT:** 42-13-16  
**ELEVATION:** 833 FEET

**LONG:** 91-09-51

**POPULATION:** 3,871

**FROM CITY:** 1 MILE SE **ADDRESS:** 20373 HIGHWAY 38 S

**HOURS**  
MON-FRI 0700-1700

**MANAGER**  
BRIAN OSTWINKLE  
319-465-5488

**OPERATORS**  
MONTICELLO AVIATION  
319-465-5488

**MONTICELLO**

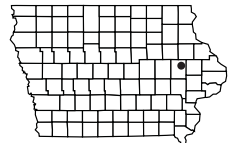


RWY	SURFACE	LENGTH	WIDTH	LIGHTING		VGS	
				RUNWAY	APPROACH		
09/27	TURF	2300	90	NONE	NONE/NONE	NONE/NONE	
15/33	CONC	4400	75	MIRL	REIL/REIL	P2L/P2L	
CTAF	UNICOM	LGTS	GROUND	TOWER	APPROACH	WEATHER	CLNC DEL
122.80	122.80	122.80			134.05 CID	119.275 319-465-6155	

**REMARKS:**  
AFTER HOURS: 563-543-0503  
SELF SERVE FUEL AVAILABLE  
RUNWAY 9/27 CLOSED DURING WINTER

**FUEL**  
100LL/JETA

**BEACON**  
YES



# MOUNT AYR MUNICIPAL - JUDGE LEWIS FIELD (1Y3)

LAT: 40-42-21  
ELEVATION: 1265 FEET

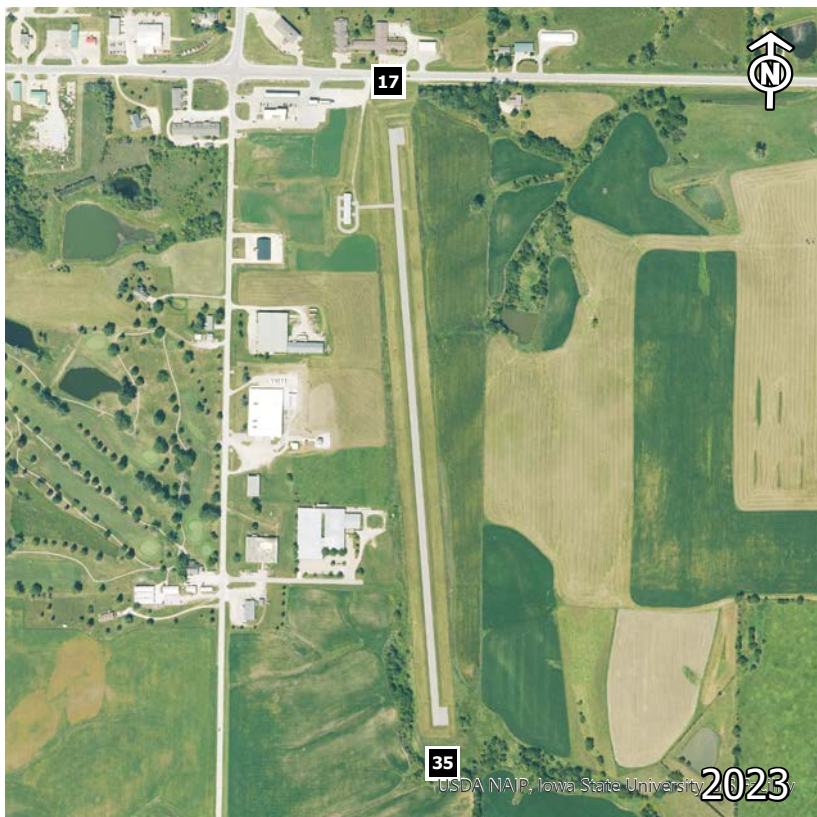
LONG: 94-13-13  
FROM CITY: 1 MILE SE

POPULATION: 1,623  
ADDRESS: HIGHWAY 2 AND 169

**HOURS**  
UNATTENDED

**MANAGER**  
MIKE WARIN  
641-202-0176

**OPERATORS**  
NONE



MOUNT AYR

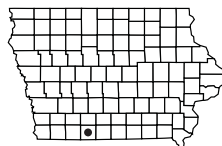
RWY	SURFACE	LENGTH	WIDTH	LIGHTING		VGSI	
				RUNWAY	APPROACH		
*17/35*	ASPH-TURF	2600	40*	LIRL	NONE/NONE	NONE/NONE	
CTAF	UNICOM	LGTS	GROUND	TOWER	APPROACH	WEATHER	CLNC DEL
122.90							

**REMARKS:**

\* RWY 17 THRESHOLD DISPLACED 500'  
 \* RWY 35 THRESHOLD DISPLACED 120'  
 \* 40' ASPHALT IN CENTER OF 120' WIDE TURF STRIP  
 TRANSIENT HANGARS AVAILABLE  
 CONVENIENCE STORE AND MOTEL 0.2  
 MILE FROM AIRPORT

**FUEL**  
NONE

**BEACON**  
NO



# MOUNT PLEASANT MUNICIPAL (MPZ)

LAT: 40-56-49

LONG: 91-30-41

POPULATION: 9,274

ELEVATION: 731 FEET

FROM CITY: 3 MILE SE

ADDRESS: 1720 S IRIS ST.

## HOURS

MON-FRI 0800-1700  
SAT-SUN ON CALL

## MANAGER

CLIFF BAKER  
319-385-8122

## OPERATORS

AIR ADVANTAGE INC.  
319-385-8122

MOUNT PLEASANT

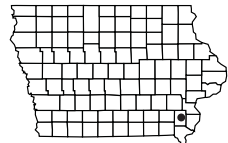


RWY	SURFACE	LENGTH	WIDTH	LIGHTING		VGS I	
				RUNWAY	APPROACH		
04/22	TURF	1967	120	NONE	NONE/NONE	NONE/NONE	
15/33	ASPH	4001	75	MIRL	NONE/REIL	P2L/P2L	
CTAF	UNICOM	LGTS	GROUND	TOWER	APPROACH	WEATHER	CLNC DEL
123.05	123.05	123.05			135.60 ZAU	119.320 319-385-4926	

REMARKS:  
NONE

FUEL  
100LL/JETA

BEACON  
YES



# MUSCATINE MUNICIPAL (MUT)

**LAT:** 41-22-05    **LONG:** 91-08-55    **POPULATION:** 22,697  
**ELEVATION:** 547 FEET    **FROM CITY:** 5 MILE SW    **ADDRESS:** 5701 S HIGHWAY 61

**HOURS**  
 MON-FRI 0700-1800  
 SAT-SUN 0800-1600

**MANAGER**  
 MIKE WOERLY  
 563-263-8672

**OPERATORS**  
 REVV AVIATION  
 563-263-8672



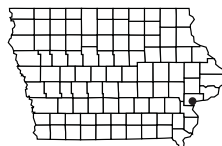
**MUSCATINE**

RWY	SURFACE	LENGTH	WIDTH	LIGHTING		VGS	
				RUNWAY	APPROACH		
06/24	CONC	5500	100	MIRL	REIL/MALSR	V4L/P4R	
12/30	CONC	4000	75	MIRL	REIL/REIL	P4L/P4L	
CTAF	UNICOM	LGTS	GROUND	TOWER	APPROACH	WEATHER	CLNC DEL
122.70	122.70	122.70			133.275 MLI	120.625 563-263-0902	119.125

**REMARKS:**  
 AFTER HOURS ON REQUEST  
 GLIDER OPERATIONS INVOF

**FUEL**  
 100LL/JETA

**BEACON**  
 YES





# NEW HAMPTON MUNICIPAL (1Y5)

LAT: 43-05-14

LONG: 92-20-36

POPULATION: 3,571

ELEVATION: 1173 FEET

FROM CITY: 2 MILE NW

ADDRESS: 1879 KENWOOD AVE

**HOURS**  
UNATTENDED

**MANAGER**  
BRODIE RATHAMEL  
641-330-8448

**OPERATORS**  
NONE

**NEW HAMPTON**

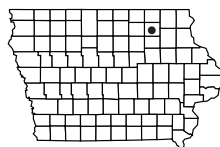


RWY	SURFACE	LENGTH	WIDTH	LIGHTING		VGSIs	
				RUNWAY	APPROACH		
04/22 17/35	TURF ASPH	2300 2900	105 50	NONE NONE	NONE/NONE NONE/NONE	NONE/NONE NONE/NONE	
CTAF	UNICOM	LGTS	GROUND	TOWER	APPROACH	WEATHER	CLNC DEL
122.90							

**REMARKS:**  
RC AIRCRAFT ACTIVITY INVOF

**FUEL**  
NONE

**BEACON**  
NO



# NEWTON MUNICIPAL – EARL JOHNSON FIELD (TNU)

**LAT:** 41-40-28

**LONG:** 93-01-18

**POPULATION:** 15,579

**ELEVATION:** 953 FEET

**FROM CITY:** 2 MILE SE

**ADDRESS:** 2901 RUSTY WALLACE DR

**HOURS**

MON-FRI 0730-1800  
SAT-SUN 0800-1700

**MANAGER**

ETHAN NASALROAD  
641-792-1292

**OPERATORS**

JOHNSON AVIATION  
641-792-1292



RWY	SURFACE	LENGTH	WIDTH	LIGHTING		VGS	
				RUNWAY	APPROACH		
14/32	ASPH	5600	100	MIRL	REIL/MALSR	V4L/V4L	
CTAF	UNICOM	LGTS	GROUND	TOWER	APPROACH	WEATHER	CLNC DEL
122.80	122.80	122.80			123.90 DSM	132.275 641-791-3302	126.30

**REMARKS:**

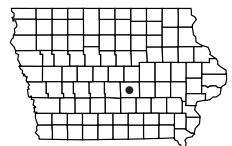
AFTER HOURS CALL: 515-360-1807  
STADIUM WITHIN 3NM  
RCO 126.3  
SEASONAL MIGRATORY BIRDS INVOF  
AVGAS AND JET FUEL TRUCK SERVICE  
AVAILABLE

**FUEL**

100LL/JETA

**BEACON**

YES



# NORTHWOOD MUNICIPAL (5D2)

**LAT:** 43-26-55

**LONG:** 93-12-06

**POPULATION:** 3,035

**ELEVATION:** 1226 FEET

**FROM CITY:** 1 MILE E

**ADDRESS:** 2104 CENTRAL AVE

**HOURS**  
UNATTENDED

**MANAGER**  
DR. MIKE  
DIERENFELD  
641-324-1084

**OPERATORS**  
NONE

**NORTHWOOD**

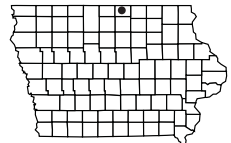


RWY	SURFACE	LENGTH	WIDTH	LIGHTING		VGSI	
				RUNWAY	APPROACH		
17/35	TURF	2660	100	LIRL	NONE/NONE	NONE/NONE	
CTAF	UNICOM	LGTS	GROUND	TOWER	APPROACH	WEATHER	CLNC DEL
122.90							

**REMARKS:**  
CAUTION - ROAD 100' EAST AND  
PARALLEL TO RUNWAY  
CROP DUSTING AT AIRPORT

**FUEL**  
NONE

**BEACON**  
NO



# OELWEIN MUNICIPAL (OLZ)

**LAT:** 42-40-53  
**ELEVATION:** 1076 FEET

**LONG:** 91-58-27  
**FROM CITY:** 3 MILE W

**POPULATION:** 6,692  
**ADDRESS:** 19623 40TH ST

**HOURS**  
0800-DUSK

**MANAGER**  
DYLAN MULFINGER  
319-283-5440

**OPERATORS**  
SKY VALLEY AVIATION  
319-290-2706

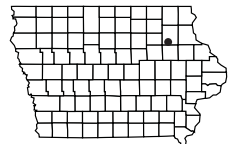


**OELWEIN**

RWY	SURFACE	LENGTH	WIDTH	LIGHTING		VGS	
				RUNWAY	APPROACH		
13/31	CONC	4000	75	MIRL	REIL/NONE	NONE/NONE	
18/36	*TURF	1822	85	NONE	NONE/NONE	NONE/NONE	
CTAF	UNICOM	LGTS	GROUND	TOWER	APPROACH	WEATHER	CLNC DEL
122.80	122.80	122.80			118.90 ALO	119.675 319-283-3518	

**REMARKS:**  
\*RWY 18/36 CLOSED AFTER  
FIRST SNOW

**FUEL**  
100LL/JETA  
**BEACON**  
YES





# OSAGE MUNICIPAL (D02)

**LAT:** 43-17-33  
**ELEVATION:** 1168 FEET

**LONG:** 92-47-44  
**FROM CITY:** 1 MILE NE

**POPULATION:** 3,614  
**ADDRESS:** 1503 ASH ST

**HOURS**  
 UNATTENDED

**MANAGER**  
 BROCK WATERS  
 641-832-7945

**OPERATORS**  
 NONE

**OSAGE**

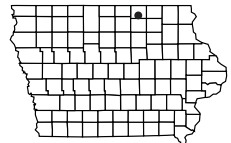


RWY	SURFACE	LENGTH	WIDTH	LIGHTING		VGSI	
				RUNWAY	APPROACH		
17/35	ASPH	3400	50	MIRL	NONE/NONE	NONE/NONE	
CTAF	UNICOM	LGTS	GROUND	TOWER	APPROACH	WEATHER	CLNC DEL
122.80	122.80	122.80					

**REMARKS:**  
 NONE

**FUEL**  
 NONE

**BEACON**  
 NO



# OSCEOLA MUNICIPAL (I75)

**LAT:** 41-03-08  
**ELEVATION:** 1115 FEET

**LONG:** 93-41-21  
**FROM CITY:** 4 MILE E

**POPULATION:** 4,659  
**ADDRESS:** 1754 270TH AVE

**HOURS**  
MON-FRI 0800-1400

**MANAGER**  
LINDA PERSELS  
641-342-7437

**OPERATORS**  
KEVIN SEUFERER  
641-223-2400

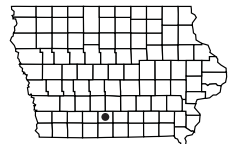


**OSCEOLA**

RWY	SURFACE	LENGTH	WIDTH	LIGHTING		VGS	
				RUNWAY	APPROACH		
18/36	CONC	4000	75	MIRL	REIL/REIL	P2L/P2L	
CTAF	UNICOM	LGTS	GROUND	TOWER	APPROACH	WEATHER	CLNC DEL
122.80	122.80	122.80			135.20 DSM	120.975 641-342-1422	

**REMARKS:**  
RWY 18 PREFERRED  
CALM WIND RWY  
24 HOUR CREDIT CARD  
FUEL AVAILABLE

**FUEL**  
100LL  
**BEACON**  
YES



# OSKALOOSA MUNICIPAL (OOA)

LAT: 41-13-36

LONG: 92-29-38

POPULATION: 10,938

ELEVATION: 840 FEET

FROM CITY: 9 MILE SE

ADDRESS: 2973 URBANA AVE

**HOURS**

MON-FRI 0800-1700

**MANAGER**

SHANE VANDE VOORT  
641-933-4316

**OPERATORS**

CLASSIC AVIATION  
641-933-4316

**OSKALOOSA**



RWY	SURFACE	LENGTH	WIDTH	LIGHTING		VGSI	
				RUNWAY	APPROACH		
04/22	CONC	1926	75	NONE	NONE/NONE	NONE/NONE	
13/31	CONC	4012	75	MIRL	REIL/REIL	P2L/P2L	
CTAF	UNICOM	LGTS	GROUND	TOWER	APPROACH	WEATHER	CLNC DEL
122.80	122.80	122.80			118.15 ZAU	118.625 641-933-4312	

**REMARKS:**

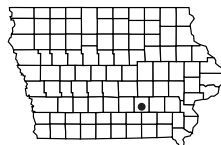
RC AIRCRAFT ACTIVITY INVOF

**FUEL**

100LL/JETA

**BEACON**

YES



# OTTUMWA REGIONAL (OTM)

**LAT:** 41-06-24     **LONG:** 92-26-52     **POPULATION:** 24,998  
**ELEVATION:** 846 FEET     **FROM CITY:** 5 MILE NW     **ADDRESS:** 14802 TERMINAL ST

**HOURS**

SUMMER: MON-FRI 0700-1900  
 SAT-SUN 0700-1800  
 WINTER: MON-FRI 0700-1800  
 SAT-SUN 0800-1700

**MANAGER**

JAY WHEATON  
 641-683-0619

**OPERATORS**

CITY OF OTTUMWA  
 641-954-9200



**OTTUMWA**

RWY	SURFACE	LENGTH	WIDTH	LIGHTING		VGS	
				RUNWAY	APPROACH		
04/22	ASPH-CONC	4601	100	HIRL	REIL/REIL	P2L/P2L	
13/31	ASPH-CONC	6001	100	HIRL	ODALS/MALSR	V4L/NONE	
CTAF	UNICOM	LGTS	GROUND	TOWER	APPROACH	WEATHER	CLNC DEL
123.00	123.00	123.00			118.15 ZAU	124.175 641-684-9164	

**REMARKS:**

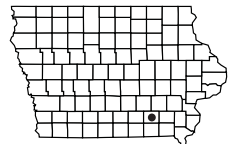
RCO 122.4  
 AFTER HOURS: 641-799-9120 OR 641-208-5821  
 RC AIRCRAFT INVOF  
 SELF-SERVE 100LL

**FUEL**

100LL/JETA

**BEACON**

YES





# PAULLINA MUNICIPAL (1Y9)

**LAT:** 42-59-16  
**ELEVATION:** 1385 FEET

**LONG:** 95-39-52  
**FROM CITY:** 1 MILE E

**POPULATION:** 788  
**ADDRESS:** 5690 460TH ST

**HOURS**  
 UNATTENDED

**MANAGER**  
 BRIAN FELTMAN  
 712-348-1306

**OPERATORS**  
 NONE

**PAULLINA**



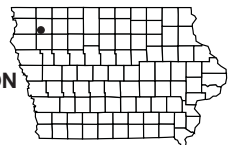
RWY	SURFACE	LENGTH	WIDTH	LIGHTING		VGSI	
				RUNWAY	APPROACH		
*17/35	*ASPH-TURF	2800	*28	*LIRL	NONE/NONE	NONE/NONE	
CTAF	UNICOM	LGTS	GROUND	TOWER	APPROACH	WEATHER	CLNC DEL
122.90		122.90					

**REMARKS:**

- \*RWY 17 THRESHOLD DISPLACED 150'
- \*28' ASPHALT RWY IN CENTER OF 120' WIDE TURF STRIP
- \*3 CLICKS TO TURN ON; LIGHTS GO OFF WITH MORE THAN 3 CLICKS
- 3 UNLIT WIND TURBINES 1900' MSL 2 MILES N

**FUEL**  
 100LL

**BEACON**  
 NO



# PELLA MUNICIPAL (PEA)

**LAT:** 41-24-04  
**ELEVATION:** 885 FEET

**LONG:** 92-56-45  
**FROM CITY:** 1 MILE W

**POPULATION:** 10,352  
**ADDRESS:** 501 W 15TH ST

**HOURS**  
MON-SAT DAWN-DUSK  
SUN 1200-1700

**MANAGER**  
SHANE VANDE VOORT  
641-628-9393

**OPERATORS**  
CLASSIC AVIATION INC.  
641-628-9393



**PELLA**

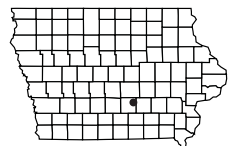
USDA NAIP, Iowa State University 2023

RWY	SURFACE	LENGTH	WIDTH	LIGHTING		VGS	
				RUNWAY	APPROACH		
*16/34*	CONC	5403	75	MIRL	REIL/REIL	P2L/P2L	
CTAF	UNICOM	LGTS	GROUND	TOWER	APPROACH	WEATHER	CLNC DEL
122.80	122.80	122.80			123.90 DSM	118.870 641-628-3459	

**REMARKS:**

- \*RWY 16 THRESHOLD DISPLACED 200'
- \*RWY 34 THRESHOLD DISPLACED 200'

**FUEL**  
100LL/JETA  
  
**BEACON**  
YES



# PERRY MUNICIPAL (PRO)

LAT: 41-49-41

LONG: 94-09-36

POPULATION: 7,633

ELEVATION: 1013 FEET

FROM CITY: 3 MILE W

ADDRESS: 14381 GALVESTON COURT

## HOURS

MON-FRI 0730-1630

## MANAGER

JACK BUTLER  
515-465-3970

## OPERATORS

NONE



PERRY

2024

RWY	SURFACE	LENGTH	WIDTH	LIGHTING		VGS	
				RUNWAY	APPROACH		
14/32	CONC	5500	100	MIRL	REIL/REIL	P4L/P4L	
04/22	TURF	2322	237	NONE	NONE/NONE	NONE/NONE	
CTAF	UNICOM	LGTS	GROUND	TOWER	APPROACH	WEATHER	CLNC DEL
122.80	122.80	122.80			123.90 DSM	118.00 515-465-2269	

## REMARKS:

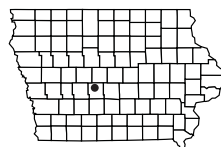
SKY DIVING ACTIVITY INVOF  
JET A WITH ADDITIVE

## FUEL

100LL/JETA

## BEACON

YES





# POCAHONTAS MUNICIPAL (POH)

LAT: 42-44-36

LONG: 94-38-49

POPULATION: 1,970

ELEVATION: 1226 FEET

FROM CITY: 1 MILE NE

ADDRESS: 23240 510TH ST

**HOURS**  
UNATTENDED

**MANAGER**  
DENNIS DAHL  
712-335-4236

**OPERATORS**  
NONE



**POCAHONTAS**

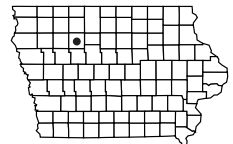
RWY	SURFACE	LENGTH	WIDTH	LIGHTING		VGS	
				RUNWAY	APPROACH		
*18/36 12/30	TURF ASPH	1999 4100	135 60	NONE MIRL	NONE/NONE REIL/REIL	NONE/NONE P2L/P2L	
CTAF	UNICOM	LGTS	GROUND	TOWER	APPROACH	WEATHER	CLNC DEL
122.80	122.80	122.80			134.00 ZMP		

**REMARKS:**

\*RWY 18 THRESHOLD DISPLACED 365'  
\*RWY 18/36 NO WINTER MAINTENANCE  
FOR SERVICE CALL: 712-335-3308  
SELF-SERVE 100LL

**FUEL**  
100LL

**BEACON**  
YES





# RED OAK MUNICIPAL (RDK)

**LAT:** 41-00-38

**LONG:** 95-15-33

**POPULATION:** 5,362

**ELEVATION:** 1045 FEET

**FROM CITY:** 2 MILE W

**ADDRESS:** 1674 200TH ST

**HOURS**

MON-FRI 0800-1700

**MANAGER**

KEVIN MCGREW  
712-370-1511

**OPERATORS**

MEYERKORTH AVIATION  
660-253-2502

**RED OAK**



RWY	SURFACE	LENGTH	WIDTH	LIGHTING		VGSI	
				RUNWAY	APPROACH		
13/31	*TURF	2050	210	NONE	NONE/NONE	NONE/NONE	
17/35	CONC	2901	60	MIRL	REIL/REIL	P2L/P2L	
*05/23	CONC	5100	75	MIRL	REIL/REIL	P2L/P2L	
CTAF	UNICOM	LGTS	GROUND	TOWER	APPROACH	WEATHER	CLNC DEL
122.80	122.80	122.80			124.50 OMA	123.925 712-623-3220	

**REMARKS:**

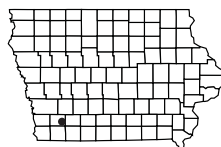
ULTRALIGHT ACTIVITY INVOF  
RWY 13/31 NOT MAINTAINED NOV-APRIL  
24 HR SELF-SERVE FUEL AVAILABLE  
CALM WIND RWY 23  
\*RWY 5 THRESHOLD DISPLACED 1,000'

**FUEL**

100LL/JETA

**BEACON**

YES



# RINGSTEAD - PELTZ FIELD (8Y8)

**LAT:** 43-15-57      **LONG:** 94-33-45      **POPULATION:** 422  
**ELEVATION:** 1280 FEET      **FROM CITY:** 3 MILE SW      **ADDRESS:** 5191 260TH ST

**HOURS**  
UNATTENDED

**MANAGER**  
MATT PELTZ  
612-799-8797

**OPERATORS**  
NONE



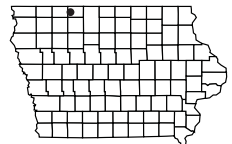
**RINGSTEAD**

RWY	SURFACE	LENGTH	WIDTH	LIGHTING		VGS	
				RUNWAY	APPROACH		
18/36	TURF	2040	80	NONE	NONE/NONE	NONE/NONE	
CTAF	UNICOM	LGTS	GROUND	TOWER	APPROACH	WEATHER	CLNC DEL
122.90							

**REMARKS:**  
NO SNOW REMOVAL

**FUEL**  
NONE

**BEACON**  
NO



# ROCK RAPIDS MUNICIPAL (RRQ)

**LAT:** 43-27-08

**LONG:** 96-10-47

**POPULATION:** 2,611

**ELEVATION:** 1363 FEET

**FROM CITY:** NW EDGE

**ADDRESS:** 1357 HARDING AVE

**HOURS**

MON-FRI 0900-1700  
SAT 0900-1200

**MANAGER**

MICAH FREESE  
712-472-4585

**OPERATORS**

CHAPIN AIRCRAFT REPAIR  
605-988-4314

**ROCK RAPIDS**



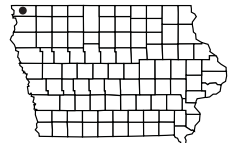
RWY	SURFACE	LENGTH	WIDTH	LIGHTING		VGSI	
				RUNWAY	APPROACH		
*16/34*	ASPH	3097	50	MIRL	NONE/NONE	P2L/P2L	
CTAF	UNICOM	LGTS	GROUND	TOWER	APPROACH	WEATHER	CLNC DEL
122.80	122.80	122.80			126.90 FSD		

**REMARKS:**

\*RWYS 16 AND 34 THRESHOLD  
DISPLACED 300'  
FUEL AVAILABLE 24 HOURS  
CALL: 605-988-4314

**FUEL**  
100LL

**BEACON**  
YES



# ROCKWELL CITY MUNICIPAL (2Y4)

**LAT:** 42-23-16      **LONG:** 94-37-08      **POPULATION:** 1,709  
**ELEVATION:** 1216 FEET      **FROM CITY:** 1 MILE SE      **ADDRESS:** 811 1ST ST

**HOURS**  
UNATTENDED

**MANAGER**  
PHILIP HAMMEN  
712-297-7041

**OPERATORS**  
NONE

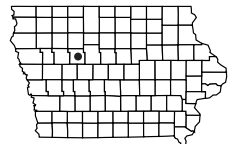


**ROCKWELL CITY**

RWY	SURFACE	LENGTH	WIDTH	LIGHTING		VGS	
				RUNWAY	APPROACH		
*12/30	CONC	3503	60	MIRL	NONE/NONE	NONE/NONE	
CTAF	UNICOM	LGTS	GROUND	TOWER	APPROACH	WEATHER	CLNC DEL
122.80							

**REMARKS:**  
 \*RWY 12 THRESHOLD DISPLACED 1200'  
 EMERGENCY NUMBERS:  
 712-297-7583(POLICE)  
 712-297-7041 (CITY HALL)

**FUEL**  
100LL  
**BEACON**  
NO





# SAC CITY MUNICIPAL (SKI)

**LAT:** 42-22-46  
**ELEVATION:** 1250 FEET

**LONG:** 94-58-47  
**FROM CITY:** 3 MILE S

**POPULATION:** 2,368  
**ADDRESS:** 3062 280TH ST

**HOURS**  
 VARIABLE

**MANAGER**  
 KEN MYERS  
 712-830-9562

**OPERATORS**  
 MYERS FLYING SERVICE  
 712-830-9562

**SAC CITY**

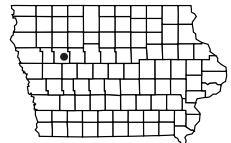


RWY	SURFACE	LENGTH	WIDTH	LIGHTING		VGSI	
				RUNWAY	APPROACH		
18/36	CONC	4100	75	MIRL	NONE/REIL	PSIL/PSIL	
14/32	CONC	2350	60	MIRL	NONE/NONE	P2L/P2L	
CTAF	UNICOM	LGTS	GROUND	TOWER	APPROACH	WEATHER	CLNC DEL
122.80	122.80	122.80			134.00 ZMP		

**REMARKS:**  
 24 HR SELF-SERVE FUEL  
 AVAILABLE  
 TEXT MANAGER AT: 712-830-9562

**FUEL**  
 100LL

**BEACON**  
 YES



# SHELDON REGIONAL (SHL)

**LAT:** 43-12-30      **LONG:** 95-50-00      **POPULATION:** 5,512  
**ELEVATION:** 1419 FEET      **FROM CITY:** 2 MILE NE      **ADDRESS:** 3020 NW BLVD

**HOURS**  
0800-1700

**MANAGER**  
LYLE VUST  
712-324-4005

**OPERATORS**  
MIDWEST FLYING  
SERVICE INC.  
712-324-4005



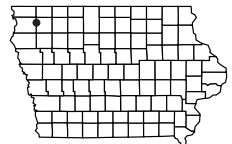
**SHELDON**

RWY	SURFACE	LENGTH	WIDTH	LIGHTING		VGS	
				RUNWAY	APPROACH		
15/33	CONC	4199	75	MIRL	REIL/REIL	P2L/P2L	
CTAF	UNICOM	LGTS	GROUND	TOWER	APPROACH	WEATHER	CLNC DEL
122.80	122.80	122.80				119.775 712-324-5159	

**REMARKS:**  
NONE

**FUEL**  
100LL/JETA

**BEACON**  
YES



# SHENANDOAH MUNICIPAL (SDA)

**LAT:** 40-45-07  
**ELEVATION:** 971 FEET

**LONG:** 95-24-50  
**FROM CITY:** 3 MILE SW

**POPULATION:** 5,546  
**ADDRESS:** 2033 MANTI RD

**HOURS**  
MON-SAT 0800-1700

**MANAGER**  
RANDY WAGNER  
712-246-1931

**OPERATORS**  
WAGNER AERO SERVICE  
712-370-2367

**SHENANDOAH**



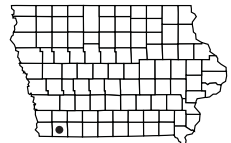
RWY	SURFACE	LENGTH	WIDTH	LIGHTING		VGS	
				RUNWAY	APPROACH		
04/22	CONC	5000	75	MIRL	REIL/REIL	P2L/P2L	
12/30	CONC	3439	75	MIRL	NONE/NONE	NONE/V4L	
CTAF	UNICOM	LGTS	GROUND	TOWER	APPROACH	WEATHER	CLNC DEL
122.80	122.80	122.80			124.50 OMA	125.525 712-246-4021	

**REMARKS:**  
FOR AFTER HOURS SERVICE,  
CALL: 712-370-2367

**FUEL**  
100LL/JETA

**BEACON**  
YES

**100**



# SIBLEY MUNICIPAL (ISB)

**LAT:** 43-22-10  
**ELEVATION:** 1538 FEET

**LONG:** 95-45-35  
**FROM CITY:** 2 MILE S

**POPULATION:** 2,860  
**ADDRESS:** 1928 OLIVE AVE

**HOURS**  
 0600-1800

**MANAGER**  
 ROBERT O'LEARY  
 712-754-3467

**OPERATORS**  
 O'LEARY AVIATION  
 712-754-3467



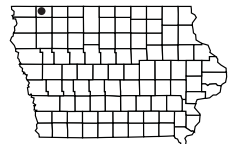
**SIBLEY**

RWY	SURFACE	LENGTH	WIDTH	LIGHTING		VGSI	
				RUNWAY	APPROACH		
17/35	CONC	3000	50	MIRL	NONE/NONE	P2L/P2L	
CTAF	UNICOM	LGTS	GROUND	TOWER	APPROACH	WEATHER	CLNC DEL
122.80	122.80	122.80			132.05 ZMP		

**REMARKS:**  
 NONE

**FUEL**  
 100LL

**BEACON**  
 NO





# SIoux GATEWAY (SUX)

**LAT:** 42-24-04

**LONG:** 96-23-04

**POPULATION:** 85,617

**ELEVATION:** 1098 FEET

**FROM CITY:** 6 MILE S

**ADDRESS:** 2403 AVIATION BLVD

**HOURS**  
ALL

**MANAGER**  
ALVIN LORENZO  
712-279-0167

**OPERATORS**  
ORACLE AVIATION CENTER  
712-226-5387

HAWTHORNE GLOBAL AVIATION  
712-258-6563

**SIoux CITY**

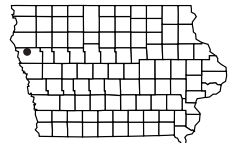


RWY	SURFACE	LENGTH	WIDTH	LIGHTING		VGSI	
				RUNWAY	APPROACH		
13/31	CONC	9002	150	HIRL	MALS/MALSR	V4L/V4L	
18/36	ASPH	6401	100	MIRL	REIL/NONE	P4R/P4L	
CTAF	UNICOM	LGTS	GROUND	TOWER	APPROACH	WEATHER	CLNC DEL
118.70	122.95	118.70	121.90	118.70	125.025 124.60	119.45 712-293-2445	

**REMARKS:**  
TOWER OPERATES 0600-2130 DAILY  
RCO 121.1R, 116.5T

**FUEL**  
100LL/JETA

**BEACON**  
YES



# SIOUX COUNTY REGIONAL (SXX)

**LAT:** 42-54-09      **LONG:** 96-09-41      **POPULATION:** 271  
**ELEVATION:** 1409 FEET      **FROM CITY:** 1 MILE N      **ADDRESS:** 3153 460TH ST

**HOURS**  
 MON-FRI 0600-1800  
 SAT 0800-1200

**MANAGER**  
 ANDREW SCHREIER  
 712-395-3623

**OPERATORS**  
 AIR FLAIR  
 712-567-1000

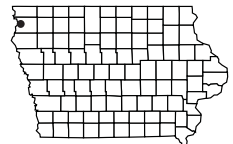


**SIoux COUNTY**

RWY	SURFACE	LENGTH	WIDTH	LIGHTING		VGS	
				RUNWAY	APPROACH		
17/35	CONC	5500	100	MIRL	REIL/MALSR	P4L/P4L	
CTAF	UNICOM	LGTS	GROUND	TOWER	APPROACH	WEATHER	CLNC DEL
122.70	122.70	122.70			124.6 125.025	120.075 712-567-1005	

**REMARKS:**  
 24 HR 100LL AND JETA+  
  
 CLEARANCE DELIVERY  
 712-293-2482

**FUEL**  
 100LL/JETA+  
  
**BEACON**  
 YES



# SPENCER MUNICIPAL (SPW)

**LAT:** 43-09-56

**LONG:** 95-12-10

**POPULATION:** 11,317

**ELEVATION:** 1339 FEET

**FROM CITY:** 3 MILE NW

**ADDRESS:** 1957 330TH ST

**HOURS**

MON-FRI 0700-1900

SAT-SUN 0800-1700

CLOSED SUNDAYS JAN-FEB

**MANAGER**

MARK WHITE

712-580-7200

**OPERATORS**

LEADING EDGE AVIATION

712-262-1000



RWY	SURFACE	LENGTH	WIDTH	LIGHTING		VGSI	
				RUNWAY	APPROACH		
12/30*	CONC	6001	100	MIRL	MALSR/REIL	V2L/V2L	
18/36	CONC	5100	75	MIRL	REIL/REIL	P4L/P4L	
CTAF	UNICOM	LGTS	GROUND	TOWER	APPROACH	WEATHER	CLNC DEL
123.00	123.00	123.00			127.75 ZMP	126.625 712-262-8885	

**REMARKS:**

\*RWY 30 THRESHOLD DISPLACED 500'

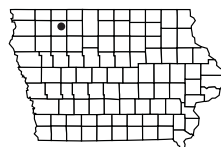
RCO - 122.15

**FUEL**

100LL/JETA

**BEACON**

YES





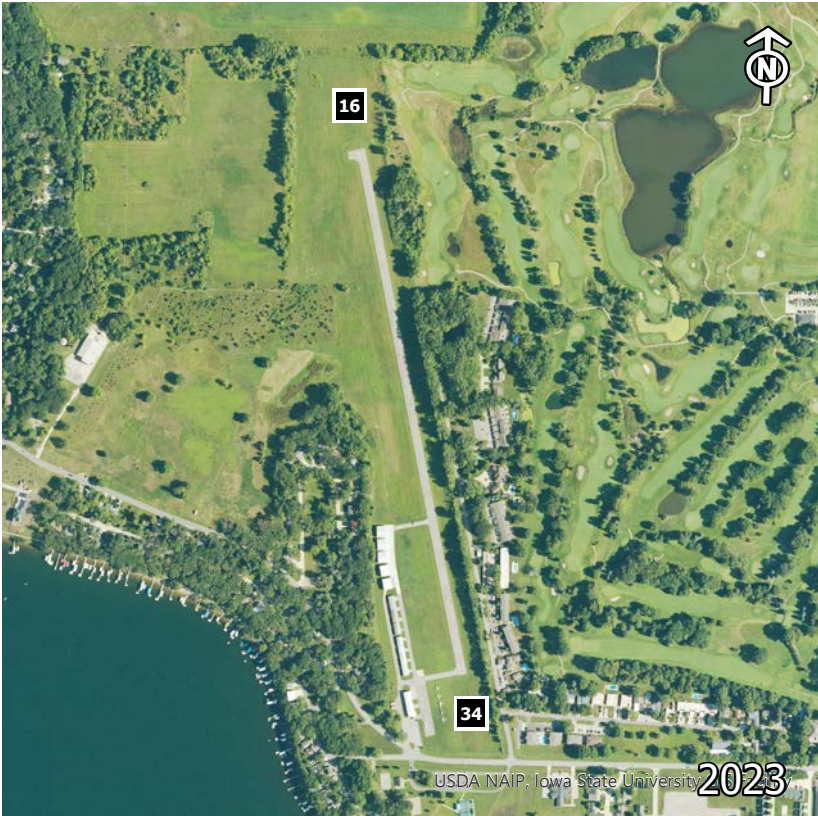
# SPIRIT LAKE MUNICIPAL (0F3)

**LAT:** 43-23-15     **LONG:** 95-08-22     **POPULATION:** 4,452  
**ELEVATION:** 1434 FEET     **FROM CITY:** 2 MILE SW     **ADDRESS:** 13871 CENTER DR

**HOURS**  
UNATTENDED

**MANAGER**  
BRUCE SMITH  
712-332-7323

**OPERATORS**  
NONE



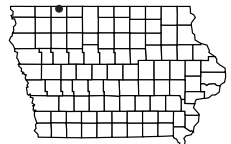
**SPIRIT LAKE**

RWY	SURFACE	LENGTH	WIDTH	LIGHTING		VGS	
				RUNWAY	APPROACH		
16/34	ASPH	3015	50	LIRL	REIL/NONE	NONE/NONE	
CTAF	UNICOM	LGTS	GROUND	TOWER	APPROACH	WEATHER	CLNC DEL
122.70	122.70	122.70					

**REMARKS:**  
NONE

**FUEL**  
REIL/NONE

**BEACON**  
NO





# STORM LAKE MUNICIPAL (SLB)

**LAT:** 42-35-51

**LONG:** 95-14-26

**POPULATION:** 10,076

**ELEVATION:** 1488 FEET

**FROM CITY:** 3 MILE SW

**ADDRESS:** 850 630TH ST

**HOURS**

MAY-SEPT MON-SAT

0800-1700

OCT-APRIL MON-SAT

0900-1700

CLOSED SUNDAYS

**MANAGER**

JIM BARTHOLOMEW

712-732-6494

**OPERATORS**

BART'S FLYING SERVICE

712-732-6494

**STORM LAKE**



RWY	SURFACE	LENGTH	WIDTH	LIGHTING		VGSI	
				RUNWAY	APPROACH		
06/24	*TURF	1962	95	NONE	NONE/NONE	NONE/NONE	
17/35	CONC	5002	75	MIRL	REIL/REIL	P2L/P2L	
*13/31	CONC	3034	50	MIRL	NONE/NONE	NONE/NONE	
CTAF	UNICOM	LGTS	GROUND	TOWER	APPROACH	WEATHER	CLNC DEL
122.70	122.70	122.70			134.00 ZMP	118.525 712-732-2301	

**REMARKS:**

\*RWY 06/24 CLOSED NOV-MARCH

\*RWY 13 THRESHOLD DISPLACED 175'

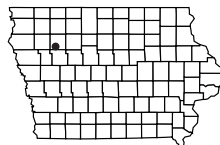
AFTER HOURS, CALL: 712-732-6301

**FUEL**

100LL/JETA

**BEACON**

YES



# SULLY MUNICIPAL (8C2)

LAT: 41-34-27

LONG: 92-50-48

POPULATION: 821

ELEVATION: 922 FEET

FROM CITY: S EDGE

ADDRESS: 600 8TH ST.

**HOURS**  
UNATTENDED

**MANAGER**  
SHANE VANDE VOORT  
641-628-9393

**OPERATORS**  
NONE



SULLY

USDA NAIP, Iowa State University 2023

RWY	SURFACE	LENGTH	WIDTH	LIGHTING		VGS I	
				RUNWAY	APPROACH		
*08/26*	*TURF	2130	120	NONE	NONE/NONE	NONE/NONE	
CTAF	UNICOM	LGTS	GROUND	TOWER	APPROACH	WEATHER	CLNC DEL
122.90							

**REMARKS:**

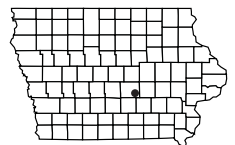
\*RWY 08 THRESHOLD DISPLACED 195'

\*RWY 26 THRESHOLD DISPLACED 915'

\*AIRPORT CLOSED AFTER FIRST SNOW

**FUEL**  
NONE

**BEACON**  
NO



# TIPTON MUNICIPAL - MATHEWS MEMORIAL (8C4)

LAT: 41-45-48

LONG: 91-09-10

POPULATION: 3,155

ELEVATION: 840 FEET

FROM CITY: 2 MILE SW

ADDRESS: 1500 AIRPORT RD

**HOURS**  
UNATTENDED

**MANAGER**  
MAX COPPESS  
563-212-3308

**OPERATORS**  
NONE

**TIPTON**



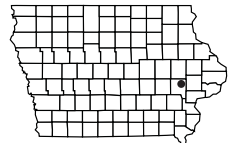
RWY	SURFACE	LENGTH	WIDTH	LIGHTING		VGSI	
				RUNWAY	APPROACH		
11/29	CONC	3000	60	MIRL	NONE/NONE	NONE/NONE	
CTAF	UNICOM	LGTS	GROUND	TOWER	APPROACH	WEATHER	CLNC DEL
122.90					119.70 CID		

**REMARKS:**  
CREDIT CARD SELF-SERVE FUEL  
COURTESY CAR AVAILABLE

**FUEL**  
100LL

**BEACON**  
NO

**108**



# TOLEDO MUNICIPAL (8C5)

**LAT:** 41-59-19      **LONG:** 92-32-53      **POPULATION:** 2,539  
**ELEVATION:** 960 FEET      **FROM CITY:** 2 MILE E      **ADDRESS:** 2118 310TH ST

**HOURS**  
UNATTENDED

**MANAGER**  
JEFF ELSE  
641-751-6660

**OPERATORS**  
NONE

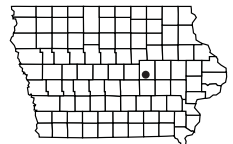


**TOLEDO**

RWY	SURFACE	LENGTH	WIDTH	LIGHTING		VGS	
				RUNWAY	APPROACH		
17/35*	*TURF	1850	100	NONE	NONE/NONE	NONE/NONE	
CTAF	UNICOM	LGTS	GROUND	TOWER	APPROACH	WEATHER	CLNC DEL
122.90							

**REMARKS:**  
 \*RWY 35 THRESHOLD DISPLACED 395'  
 \*AIRPORT CLOSED NOV-APRIL

**FUEL**  
NONE  
  
**BEACON**  
NO





# TRAER MUNICIPAL (8C6)

**LAT:** 42-12-03  
**ELEVATION:** 892 FEET

**LONG:** 92-27-24  
**FROM CITY:** 1 MILE NE

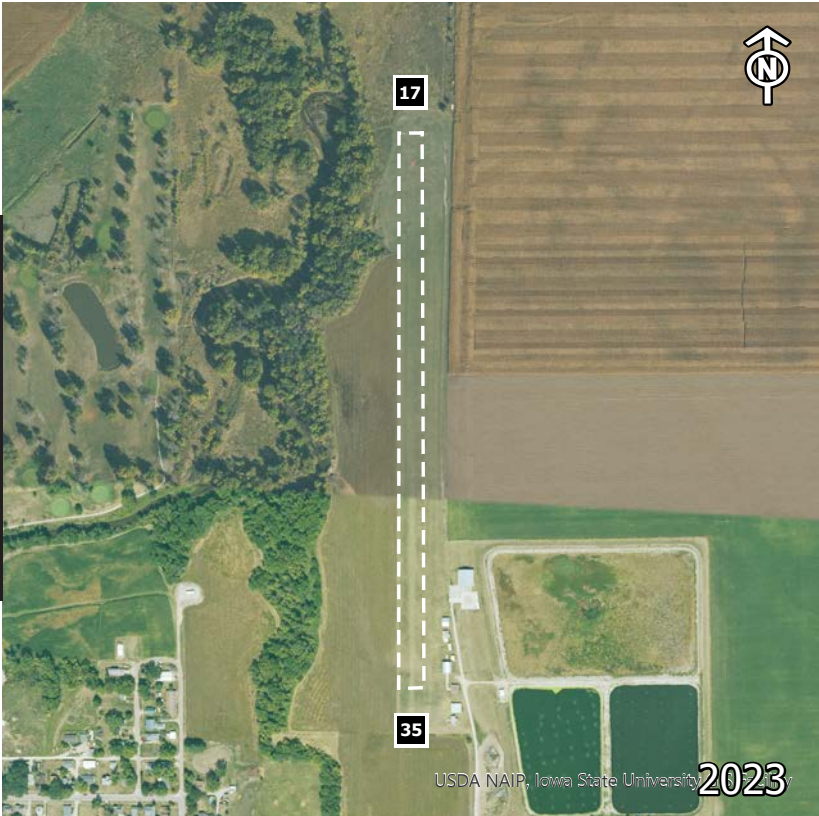
**POPULATION:** 1,594  
**ADDRESS:** 1680 O AVE

**HOURS**  
 UNATTENDED

**MANAGER**  
 CITY CLERK  
 319-478-2580

**OPERATORS**  
 NONE

**TRAER**



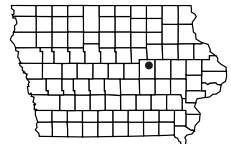
RWY	SURFACE	LENGTH	WIDTH	LIGHTING		VGS	
				RUNWAY	APPROACH		
17/35	TURF	2555	100	LIRL	NONE/NONE	NONE/NONE	
CTAF	UNICOM	LGTS	GROUND	TOWER	APPROACH	WEATHER	CLNC DEL
122.90							

**REMARKS:**  
 CALL TO CONFIRM SNOW REMOVAL  
 FOR EMERGENCY FUEL CALL:  
 319-478-2154 OR 319-476-2580  
 CAUTION DURING SPRING THAW

**FUEL**  
 NONE

**BEACON**  
 NO

**110**



# VINTON VETERANS MUNICIPAL (VTI)

**LAT:** 42-13-06      **LONG:** 92-01-31      **POPULATION:** 5,257  
**ELEVATION:** 842 FEET      **FROM CITY:** 3 MILE N      **ADDRESS:** 5551 24<sup>TH</sup> AVE DR

**HOURS**  
UNATTENDED

**MANAGER**  
PAUL SEATON  
319-521-7718

**OPERATORS**  
IOWA WING AND ROTOR  
319-472-2662



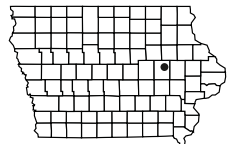
**VINTON**

USDA NAIP, Iowa State University, 2023

RWY	SURFACE	LENGTH	WIDTH	LIGHTING		VGS	
				RUNWAY	APPROACH		
09/27 *16/34	CONC ASPH	4000 2500	60 50	MIRL NONE	REIL/REIL NONE/NONE	P2L/P2L NONE/NONE	
CTAF	UNICOM	LGTS	GROUND	TOWER	APPROACH	WEATHER	CLNC DEL
122.80	122.80	122.80			134.05 CID	120.075 319-472-3122	

**REMARKS:**  
\*RWY 16/34 CLOSED NIGHTS; USED  
AS TAXIWAY FROM 09/27 TO RAMP

**FUEL**  
MOGAS/JETA/100LL  
  
**BEACON**  
YES



# WASHINGTON MUNICIPAL (AWG)

**LAT:** 41-16-30  
**ELEVATION:** 754 FEET

**LONG:** 91-40-30

**POPULATION:** 7,370

**FROM CITY:** 2 MILE SE

**ADDRESS:** 1625 S AIRPORT RD

**HOURS**  
UNATTENDED

**MANAGER**  
KURT KUCERA  
319-653-7002  
319-461-0359 (cell)

**OPERATORS**  
MOBILE AIRCRAFT MAINTENANCE  
319-931-0313

**WASHINGTON**

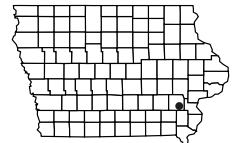


RWY	SURFACE	LENGTH	WIDTH	LIGHTING		VGSI	
				RUNWAY	APPROACH		
13/31* 18/36	CONC CONC	3401 4000	60 75	MIRL MIRL	REIL/REIL REIL/REIL	P2L/P2L P2R/P2L	
CTAF	UNICOM	LGTS	GROUND	TOWER	APPROACH	WEATHER	CLNC DEL
122.70	122.70	122.70			118.15 ZAU	127.825 319-653-4149	

**REMARKS:**  
SELF SERVICE (CREDIT CARD) FUEL  
GCO - 122.725  
CALL 319-461-0359 FOR ASSISTANCE

**FUEL**  
100LL/JETA

**BEACON**  
YES



# WATERLOO REGIONAL (ALO)

**LAT:** 42-33-30

**LONG:** 92-24-04

**POPULATION:** 68,366

**ELEVATION:** 873 FEET

**FROM CITY:** 4 MILE NW

**ADDRESS:** 2790 LIVINGSTON LN

**HOURS**

0500-2300

**MANAGER**

STEVEN KJERGAARD  
319-291-4483

**OPERATORS**

LIVINGSTON AVIATION  
319-234-1783



**WATERLOO**

RWY	SURFACE	LENGTH	WIDTH	LIGHTING		VGS
				RUNWAY	APPROACH	
12/30	ASPH	8399	150	HIRL	MALSR/MALS	P4L/V4L
18/36	ASPH-CONC	6003	150	MIRL	REIL/REIL	V4L/P4L

CTAF	UNICOM	LGTS	GROUND	TOWER	APPROACH	WEATHER	CLNC DEL
125.07	122.95	125.07	121.90	125.07	118.90 126.75	120.65 319-233-8984	

**REMARKS:**

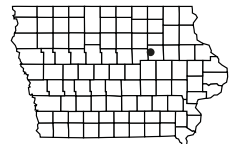
TOWER OPERATES 0600-2000 DAILY  
RCO - 122.05

**FUEL**

100LL/JETA

**BEACON**

YES



**RUNWAY 6/24 AND ASSOCIATED TAXIWAYS PERMANENTLY CLOSED**



# WAUKON MUNICIPAL (Y01)

LAT: 43-16-50

LONG: 91-28-10

POPULATION: 4,131

ELEVATION: 1281 FEET

FROM CITY: 1 MILE NE

ADDRESS: 911 ALAMAKEE ST

**HOURS**  
UNATTENDED

**MANAGER**  
JIM WADSWORTH  
563-568-7220

**OPERATORS**  
NONE

**WAUKON**

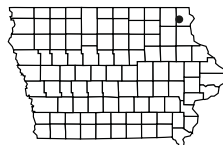


RWY	SURFACE	LENGTH	WIDTH	LIGHTING		VGS	
				RUNWAY	APPROACH		
07/25	ASPH	2413	60	LIRL	NONE/NONE	NONE/NONE	
CTAF	UNICOM	LGTS	GROUND	TOWER	APPROACH	WEATHER	CLNC DEL
122.90							

**REMARKS:**  
SOLAR RWY LIGHTS

**FUEL**  
NONE

**BEACON**  
NO



# WAVERLY MUNICIPAL (C25)

**LAT:** 42-44-31  
**ELEVATION:** 992 FEET

**LONG:** 92-30-28  
**FROM CITY:** 2 MILE NW

**POPULATION:** 8,968  
**ADDRESS:** 1710 35TH ST NW

**HOURS**  
0800-1700

**MANAGER**  
IRVIN SWIETER  
319-352-8862

**OPERATORS**  
WAVERLY AIR SERVICE  
319-352-8862



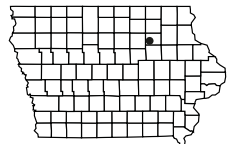
**WAVERLY**

RWY	SURFACE	LENGTH	WIDTH	LIGHTING		VGS	
				RUNWAY	APPROACH		
11/29	CONC	3200	60	MIRL	REIL/REIL	P2L/P2L	
CTAF	UNICOM	LGTS	GROUND	TOWER	APPROACH	WEATHER	CLNC DEL
122.80	122.80	122.80			118.90 ALO		

**REMARKS:**  
AFTER HOURS, CALL: 319-240-8983

**FUEL**  
100LL

**BEACON**  
YES



# WEBSTER CITY MUNICIPAL (EBS)

LAT: 42-26-12

LONG: 93-52-09

POPULATION: 8,176

ELEVATION: 1122 FEET

FROM CITY: 3 MILE SW

ADDRESS: 1524 240TH ST

## HOURS

0700-DUSK

## MANAGER

STORM FLYING SERVICE  
515-832-3723

## OPERATORS

STORM FLYING SERVICE  
515-832-3723  
HINMAN AVIATION  
515-832-4366

WEBSTER CITY



USDA NAIP, Iowa State University 2023

RWY	SURFACE	LENGTH	WIDTH	LIGHTING		VGS	
				RUNWAY	APPROACH		
05/23 14/32	*TURF CONC	2663 3851	90 75	NONE MIRL	NONE/NONE REIL/REIL	NONE/NONE P2L/P2L	
CTAF	UNICOM	LGTS	GROUND	TOWER	APPROACH	WEATHER	CLNC DEL
122.80	122.80	122.80			134.00 ZMP	127.825 515-832-2794	

## REMARKS:

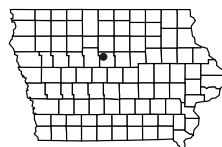
\*RWY 05/23 CLOSED NOV-APRIL  
24 HR SELF-SERVE 100LL & JETA

## FUEL

100LL/JETA

## BEACON

YES



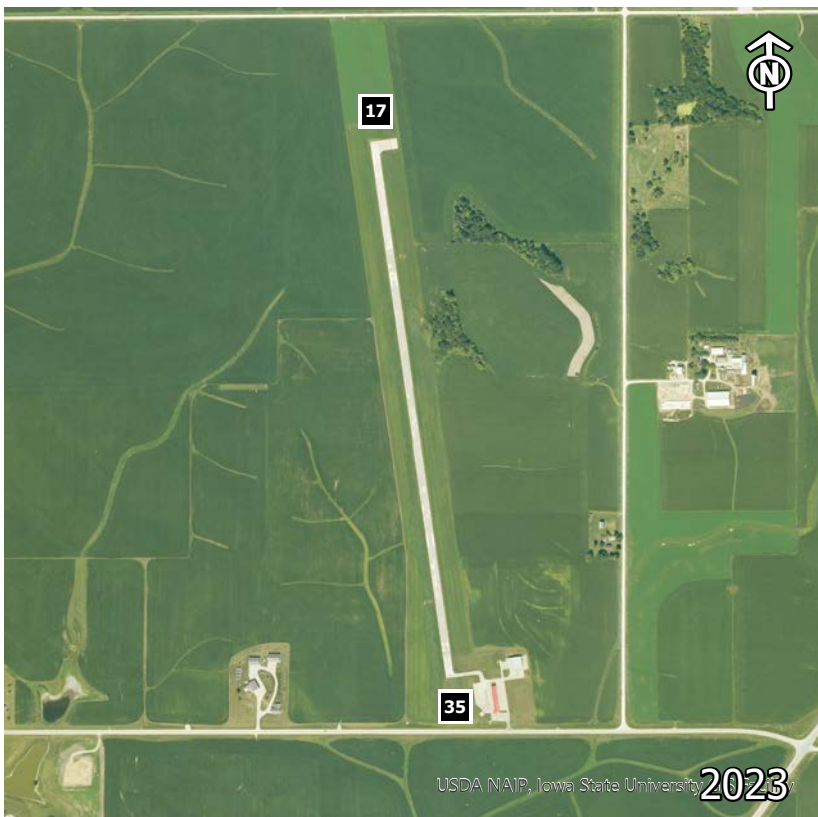
# WEST UNION - GEORGE L SCOTT MUNICIPAL (3Y2)

**LAT:** 42-59-06      **LONG:** 91-47-26      **POPULATION:** 2,490  
**ELEVATION:** 1232 FEET      **FROM CITY:** 1 MILE NE      **ADDRESS:** 10184 240TH ST

**HOURS**  
UNATTENDED

**MANAGER**  
CITY OF WEST  
UNION  
563-422-3908

**OPERATORS**  
NONE

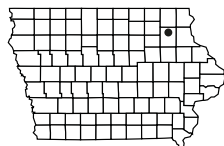


RWY	SURFACE	LENGTH	WIDTH	LIGHTING		VGS	
				RUNWAY	APPROACH		
17/35	CONC	4149	60	MIRL	NONE/NONE	P2L/P2L	
CTAF	UNICOM	LGTS	GROUND	TOWER	APPROACH	WEATHER	CLNC DEL
122.80	122.80	122.80			118.85 ZMP		

**REMARKS:**  
COURTESY CAR AVAILABLE

**FUEL**  
100LL/JETA

**BEACON**  
YES





# WINTERSET MUNICIPAL (3Y3)

**LAT:** 41-21-46      **LONG:** 94-01-16      **POPULATION:** 5,222  
**ELEVATION:** 1116 FEET      **FROM CITY:** 2 MILE N      **ADDRESS:** 3405 N 8TH AVE

**HOURS**  
 MON-FRI 0800-1700  
 SAT-SUN BY  
 APPOINTMENT

**MANAGER**  
 DAVE LAGRANGE  
 515-205-9919

**OPERATORS**  
 WINTERSET AVIATION  
 515-462-1811

**WINTERSET**

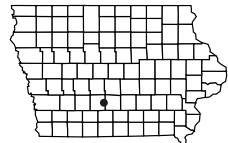


RWY	SURFACE	LENGTH	WIDTH	LIGHTING		VGSI	
				RUNWAY	APPROACH		
*14/32	ASPH	3002	50	MIRL	NONE/NONE	P4L/P2L	
CTAF	UNICOM	LGTS	GROUND	TOWER	APPROACH	WEATHER	CLNC DEL
122.70	122.70	122.70			135.20 DSM		

**REMARKS:**  
 \*RWY 14 THRESHOLD DISPLACED 175'

**FUEL**  
 100LL

**BEACON**  
 YES



# WOODBINE MUNICIPAL (3Y4)

**LAT:** 41-44-09    **LONG:** 95-41-02    **POPULATION:** 1,809  
**ELEVATION:** 1068 FEET    **FROM CITY:** 1 MILE E    **ADDRESS:** 702 LINCOLNWAY ST

**HOURS**  
UNATTENDED

**MANAGER**  
CURTIS LEE  
402-250-7135 (cell)

**OPERATORS**  
NONE

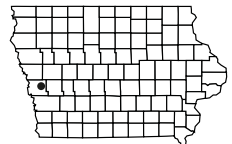


WOODBINE

RWY	SURFACE	LENGTH	WIDTH	LIGHTING		VGS	
				RUNWAY	APPROACH		
*17/35*	TURF	2045	95	LIRL	NONE/NONE	NONE/NONE	
CTAF	UNICOM	LGTS	GROUND	TOWER	APPROACH	WEATHER	CLNC DEL
122.90							

**REMARKS:**  
 \*RWY 17 THRESHOLD DISPLACED 455'  
 \*RWY 35 THRESHOLD DISPLACED 545'  
 CAUTION: ROAD 100' EAST AND  
 PARALLEL TO RWY CENTERLINE  
 RWY 35 CALM WIND RWY

**FUEL**  
NONE  
  
**BEACON**  
NO



# Seaplane Operations

Regulations regarding operation on water are as follows:

Iowa Code Section 462A.30. Aircraft restriction.

It is unlawful for any aircraft to make use of the inland lakes of the state, except in the transportation of persons or property between points separated by a distance of 30 miles or more. However, this section does not prohibit the use of such waters by any aircraft in danger or distress or the use of such waters by the operators of private aircraft, not operated for hire. In addition, the commission may, on the recommendation of the state department of transportation, designate certain areas on inland lakes of the state where seaplane flight instruction may be conducted under such conditions as may be adopted by the commission and the state department of transportation.

For additional information regarding operation of aircraft on inland lakes regulated by the Iowa Department of Natural Resources, contact:

Iowa Department of Natural Resources  
Wallace State Office Building  
Des Moines, IA 50319  
515-281-5918

The U.S. Army Corps of Engineers regulates public use of water resource development projects administered by the Corps of Engineers. For information on aircraft operation on Coralville, Red Rock, Rathbun, and Saylorville reservoirs, contact:

Coralville .....319-338-3543  
Red Rock .....641-828-7522  
Rathbun .....641-647-2464  
Saylorville .....515-276-4656

# Federal Aviation Administration

## Administrator

Federal Aviation Administration  
800 Independence Ave. S.W.  
Washington, D.C. 20591  
Phone: 202-267-3927

## Regional Administrator

Federal Aviation Administration  
901 Locust  
Kansas City, MO 64106  
Phone: 816-329-3050

## Records

### Airmen

FAA Aeronautical Center  
Airmen Certification Branch-AFS-760  
P.O. Box 25082  
Oklahoma City, OK 73125  
Phone: 866-878-2498

### Medical Certificates

FAA Aeronautical Center  
Aeromedical Certification Branch  
P.O. Box 26080  
Oklahoma City, OK 73125  
Phone: 405-954-4821

### Aircraft

FAA Aeronautical Center  
Aircraft Registration Branch-AFS-700  
P.O. Box 25504  
Oklahoma City, OK 73125  
Phone: 405-954-3116

## Iowa Service Facilities

Flight Standards District Office (FSDO)  
Federal Aviation Administration  
3753 Convenience Blvd.  
Ankeny, IA 50021  
Phone: 515-289-3840

Federal Aviation Administration  
Airport Traffic Control Tower  
3000 McKinley Ave.  
Des Moines, IA 50321  
Phone: 515-974-8010

Federal Aviation Administration  
Air Traffic Control Tower (Sioux City)  
6001 Mitchell Ave.  
Sioux City, IA 51111  
Phone: 712-277-3579

Federal Aviation Administration  
Airport Traffic Control Tower  
Municipal Airport  
9455 Shepard Court SW  
Cedar Rapids, IA 52404  
Phone: 319-364-2344

Federal Aviation Administration  
Air Traffic Control Tower  
Municipal Airport, 2740 Livingston Lane  
Waterloo, IA 50703  
Phone: 319-233-7230

Federal Aviation Administration  
Air Traffic Control Tower  
Municipal Airport, 1 1100 Airport Rd.  
Dubuque, IA 52003  
Phone: 563-589-4128

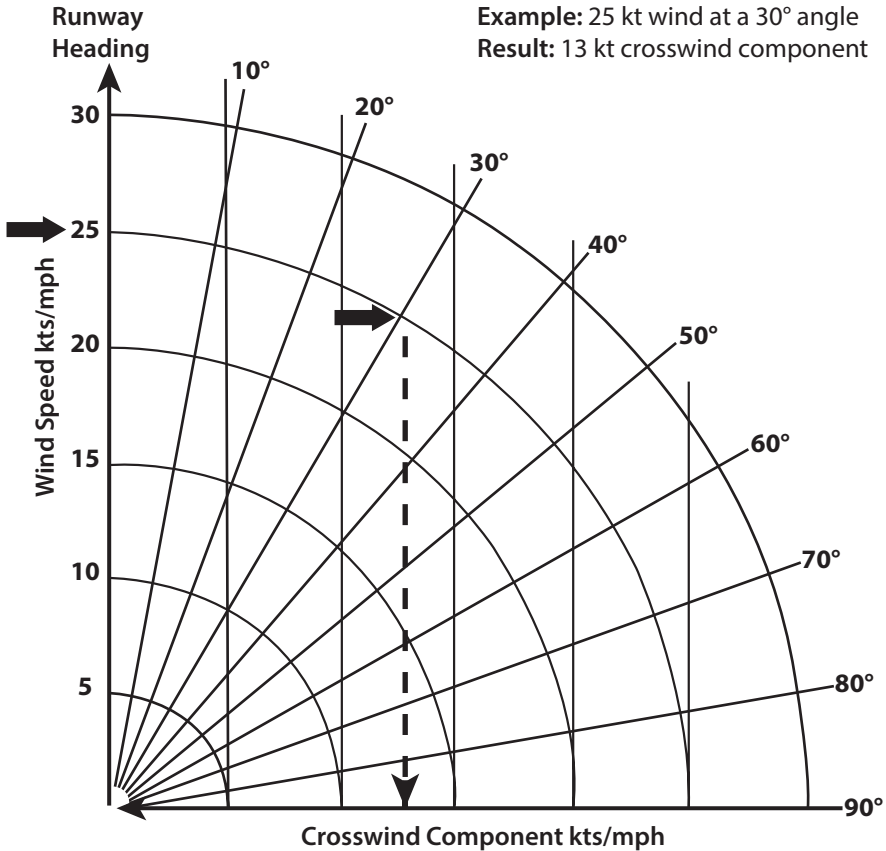
**Weather Briefing.....800-992-7433 (WX BRIEF)**  
**General Aviation Secure Hotline .....866-437-3287 (GA SECURE)**

**For links to various FAA Web sites, see the Pilot's page on  
[www.iowadot.gov/aviation](http://www.iowadot.gov/aviation).**



# Crosswind Component Chart

Example: 25 kt wind at a 30° angle  
Result: 13 kt crosswind component



## Instructions for use

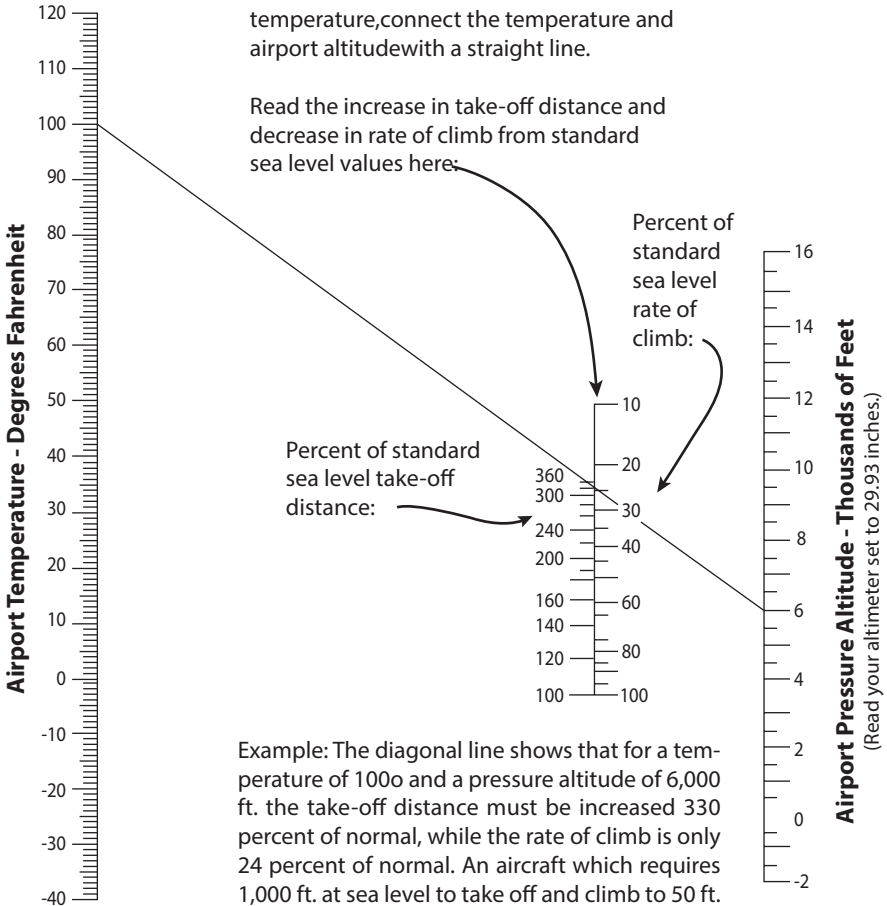
The crosswind component chart is very useful and handy for ready reference. To use the chart you must know runway heading, surface wind velocity and direction, and the maximum crosswind component allowed for the aircraft you are operating. Whenever wind conditions are gusty, it is suggested that the peak value be applied. When wind direction is variable, apply the greatest angle. Enter the chart at the wind speed scale, proceed to the right along the arc until it intersects the wind direction angle off the runway heading. At this point proceed straight down to the wind component scale and read the value. If the component is greater than that allowed for your aircraft, check for a runway that will offer less of a crosswind component, or land at a different airport where conditions will be more favorable. Remember: the same effects will be experienced on take-off and, once off, you may be forced to return. So a good rule would be: never exceed your max crosswind component on either take-off or landing.

# Modified Koch Chart

## Altitude and Temperature Effects

To find the effect of altitude and temperature, connect the temperature and airport altitude with a straight line.

Read the increase in take-off distance and decrease in rate of climb from standard sea level values here:



Example: The diagonal line shows that for a temperature of 100o and a pressure altitude of 6,000 ft. the take-off distance must be increased 330 percent of normal, while the rate of climb is only 24 percent of normal. An aircraft which requires 1,000 ft. at sea level to take off and climb to 50 ft. would require 3,300 ft. under these conditions. If the normal sea level rate of climb was 500 ft. per minute it could only climb 120 ft. per minute under these conditions.

This chart indicates typical representative values for “personal” airplanes. For exact values, consult your airplane flight manual.

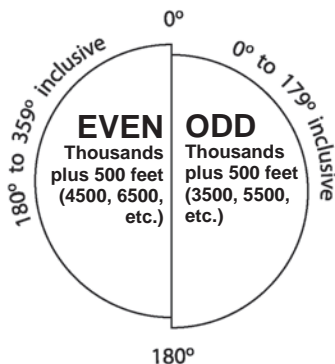
This chart may be conservative for airplanes with supercharged engines.

Remember that long grass, sand, mud or deep snow can easily double your take-off distance.

# VFR Cruising Altitudes

3000' to 18000'

All courses are magnetic



VFR - above 3000' AGL

IFR - outside controlled airspace

IFR - within controlled airspace as assigned by ATC

## Morse Code and Phonetic Alphabet

Alfa . _ _	Julieta . _ _ _	Sierra ...	2 .. _ _ _
Bravo _ _ _ _	Kilo _ _ _	Tango _	3 ... _ _
Charlie _ . _ .	Lima . . . .	Uniform . . .	4 . . . .
Delta _ _ .	Mike _ _ _	Victor ... _	5 . . . .
Echo .	November _ .	Whiskey . _ _	6 _ . . . .
Foxtrot . . _ .	Oscar _ _ _ _	Xray _ . . .	7 _ _ . . .
Golf _ _ _ .	Papa . . _ .	Yankee _ . _ _	8 _ _ _ . .
Hotel ....	Quebec _ _ . .	Zulu _ _ . .	9 _ _ _ . .
India ..	Romeo . _ .	1 . _ _ _ _	0 _ _ _ _ _

## VFR Transponder Codes

1200 is reserved for VFR aircraft not under ATC control. It is the default SB code

1255 is reserved for VFR aircraft engaged in fighting forest fires

1277 is reserved for VFR aircraft engaged in search and rescue operations

4000 is reserved for VFR military aircraft on training missions

4400-4477 are reserved for aircraft operating above FL600

7500 is the hijack code

7600 is the lost communications code

7700 is the emergency code

At no time should code 7777 be used. This code is for military interception procedures only.

# Basic VFR Weather Minimums

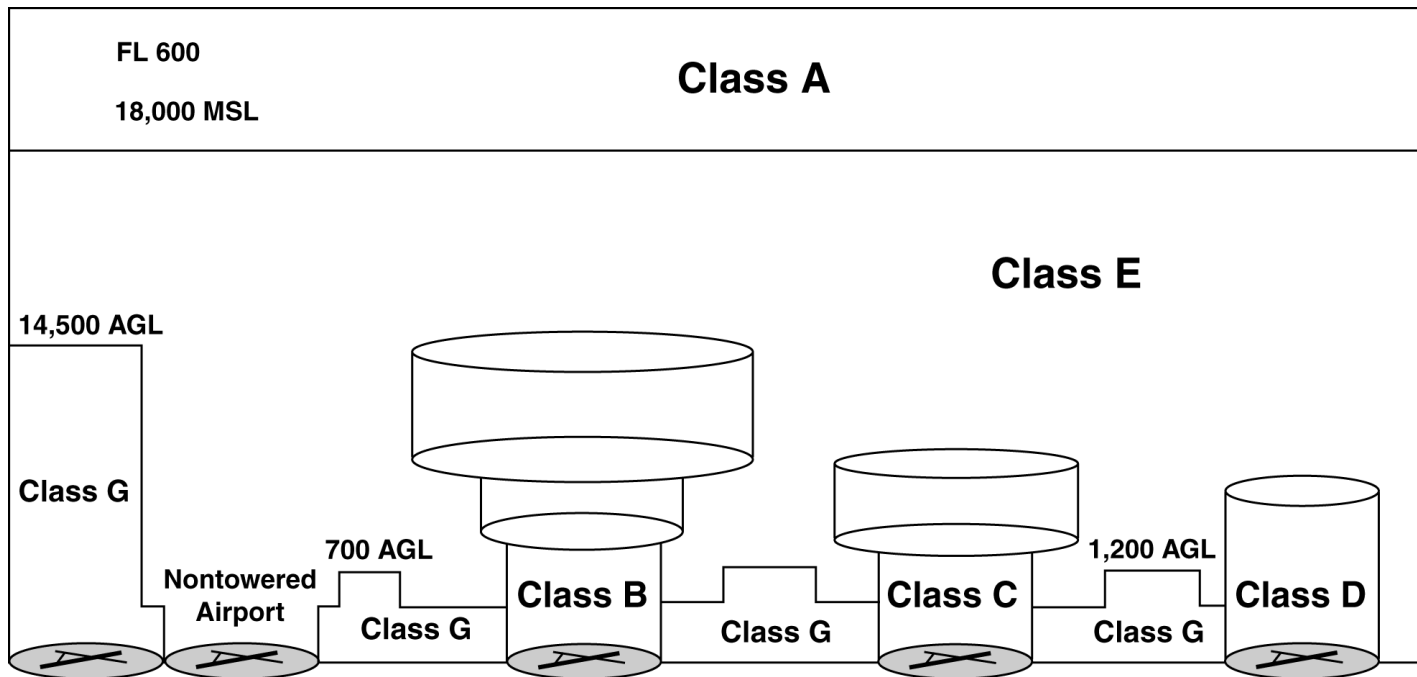
Airspace	Flight Visibility	Distance from Clouds
<b>Class A</b>	Not applicable	Not applicable
<b>Class B</b>	3 statute miles	Clear of clouds
<b>Class C</b>	3 statute miles	500 feet below 1,000 feet above 2,000 feet horizontal
<b>Class D</b>	3 statute miles	500 feet below 1,000 feet above 2,000 feet horizontal
<b>Class E</b> Less than 10,000 feet MSL	3 statute miles	500 feet below 1,000 feet above 2,000 feet horizontal
At or above 10,000 feet MSL	5 statute miles	1,000 feet below 1,000 feet above 1 statute mile horizontal
<b>Class G</b> 1,200 feet or less above the surface (regardless of MSL altitude) Day, except as provided in section 91.155(b)	1 statute mile	Clear of clouds
Night, except as provided in section 91.155(b)	3 statute miles	500 feet below 1,000 feet above 2,000 feet horizontal
More than 1,200 feet above the surface, but less than 10,000 feet MSL. Day	1 statute mile	500 feet below 1,000 feet above 2,000 feet horizontal
Night	3 statute miles	500 feet below 1,000 feet above 2,000 feet horizontal
More than 1,200 feet above the surface and at or above 10,000 feet MSL	5 statute miles	1,000 feet below 1,000 feet above 1 statute mile horizontal

Source: Federal Aviation Regulations, Sec. 91.155 - Basic VFR weather minimums.



# Airspace Classification

126



Source: U.S. Department of Transportation, Federal Aviation Administration

U.S. DEPARTMENT OF TRANSPORTATION  
FEDERAL AVIATION ADMINISTRATION

**FLIGHT PLAN**

(FAA USE ONLY)  PILOT BRIEFING  VNR  STOPOVER

TIME STARTED

SPECIALIST INITIALS

1. TYPE VFR IFR DVFR	2. AIRCRAFT IDENTIFICATION	3. AIRCRAFT TYPE/ SPECIAL EQUIPMENT	4. TRUE AIRSPEED  KTS	5. DEPARTURE POINT	6. DEPARTURE TIME PROPOSED (Z)      ACTUAL (Z)	7. CRUISING ALTITUDE
-------------------------------	----------------------------	--	-----------------------------	--------------------	---	----------------------

8. ROUTE OF FLIGHT

9. DESTINATION (Name of airport and city)	10. EST. TIME ENROUTE		11. REMARKS
	HOURS	MINUTES	

12. FUEL ON BOARD HOURS      MINUTES	13. ALTERNATE AIRPORTS	14. PILOT'S NAME, ADDRESS & TELEPHONE NUMBER & AIRCRAFT HOME BASE	15. NUMBER ABOARD
		17. DESTINATION CONTACT/TELEPHONE (OPTIONAL)	

16. COLOR OF AIRCRAFT

CIVIL AIRCRAFT PILOTS: FAR Part 91 requires you file an IFR flight plan to operate under instrument flight rules in controlled airspace. Failure to file could result in a civil penalty not to exceed \$1,000 for each violation (Section 901 of the Federal Aviation Act of 1958, as amended). Filing of a VFR flight plan is recommended as a good operating practice. See also part 99 for requirements concerning DVFR flight plans.



Federal and state laws prohibit employment and/or public accommodation discrimination on the basis of age, color, creed, disability, gender identity, national origin, pregnancy, race, religion, sex, sexual orientation or veteran's status. If you believe you have been discriminated against, please contact the Iowa Civil Rights Commission at 800-457-4416 or Iowa Department of Transportation's affirmative action officer. If you need accommodations because of a disability to access the Iowa Department of Transportation's services, contact the agency's affirmative action officer at 800-262-0003.



AVIATION  
**MISSION**

— STATEMENT —

To advocate and deliver aviation support services that promote a safe, comprehensive, and competitive air transportation system that enhances economic development and improves the quality of life for Iowans.