

**“Will Likely Last a Thousand Years”: Coon Rapids
Bridge, Symbol of Progress**

**Iowa Historic Property Study
Iowa Site Inventory No. 14-00161**

**in connection with
Coon Rapids Bridge (Sumpter Avenue Bridge) over the Middle Raccoon River
Coon Rapids, Carroll County, Iowa
FHWA #002540
BRM-1542(1)-8N-14**

**Volume 2:
Part VI. Appendix Materials**

**Tallgrass Historians L.C.
2118 South Riverside Dr.
Iowa City, IA 52246**

February 2000

Volume 2: Part VI. Appendix Materials

- A. Survey and HAER forms completed by Fraserdesign (1993)
 - B. Site plan
 - C. Andreas' Illustrated Historical Atlas of the State of Iowa (1875)
 - D. Photography
 - 1. Black-and-white prints (current and historic)
 - 2. Field Identification Data for Black/White and color Photographic Film
 - 3. Negatives for Black/White Photographs (SHPO only)
 - 4. Contact prints for #3 above (SHPO, IDOT & City of Coon Rapids only)
 - 5. Color slides (SHPO and City of Coon Rapids only)
 - E. Completed Iowa Historical Architectural Data Base (HADB) form
 - F. Other Materials
 - 1. Memorandum of Agreement regarding the Coon Rapids Bridge
 - 2. National Register of Historic Places registration form for Coon Rapids Bridge
 - G. Existing Drawings for Coon Rapids Bridge: "Iowa Highway Commission October 1922 Plans for Multiple Span Deck Truss Bridge Over Middle Coon River"
-

HAER INVENTORY

Iowa Historic Bridge Inventory

NAME(S) OF STRUCTURE

Coon Rapids Bridge (Sumpter Avenue Bridge)
FHWA: 002540

CARR27

DATE(S) OF CONSTRUCTION

1922-23

LOCATION

Sumpter Avenue over Middle Raccoon River; S34/35, T82N, R33W
Coon Rapids; Carroll County, Iowa

USE (ORIGINAL / CURRENT)

city street bridge / city street bridge

RATING NRHP eligible (score: 65)

CONDITION

good

OWNER

Town of Coon Rapids

span number: 3
span length: 95.0'
total length: 242.0'
roadway wdt.: 34.0'

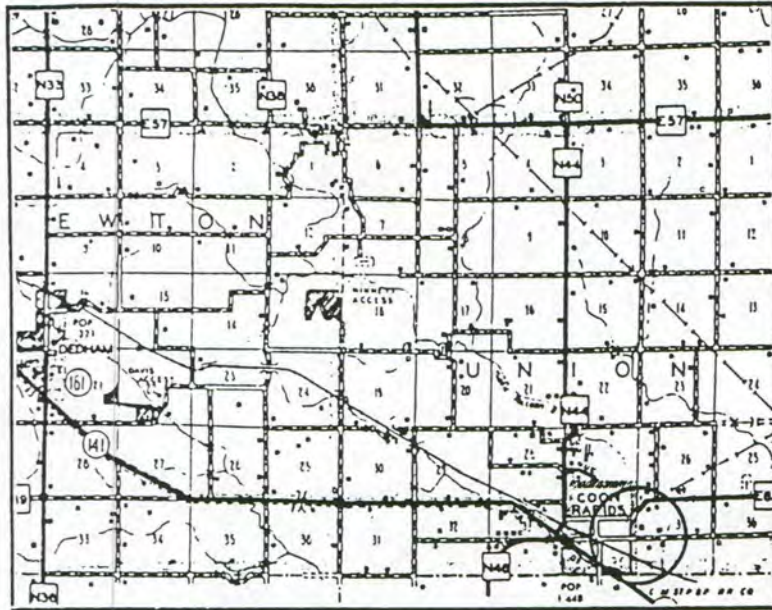
superstructure: steel, 7-panel, rigid-connected Warren deck truss
substructure: concrete abutments and wingwalls; concrete piers
floor/decking: asphalt and concrete deck over steel stringers
other features: upper chord: 2 channels with lacing; inclined end post: 2 angles with batten plates; lower chord: 2 angles with batten plates; vertical: 2 channels with lacing; diagonal: 2 angles with batten plates; lateral bracing: 1 angle; strut: 2 angles; floor beam: I-beam; guardrail: concrete with slotted, chamfered balusters; concrete sidewalks cantilevered from truss on both sides; bridge plate: Coon Rapids Bridge / Construction Authorized by Carroll / County Board of Supervisors / Design by Iowa Highway Commission / Built by Lundgren-Reis Company / 1923

Located on Sumpter Avenue in the town of Coon Rapids, this rigid-connected steel truss spans the Middle Raccoon River. The Coon Rapids Bridge is comprised of a seven-panel Warren deck truss over the river's main channel, with shallower and shorter deck truss approach spans on both ends. The deck is concrete, supported by steel stringers that bear on floor beams on the trusses' upper chords, and concrete sidewalks cantilever from the trusses' webs on both sides. The Coon Rapids Bridge was engineered as a special design by the Iowa State Highway Commission in 1922. Designated Primary Bridge Project No. B113 on Primary Road No. 46, the bridge would replace an earlier iron or steel bridge at this crossing. Its construction was let out for competitive bids in October 1922; on November 13th a contract was awarded to the Lundgren-Reis Construction Company of Des Moines for \$29,250.00. Lundgren-Reis began work on the substructure soon thereafter, completing the bridge the following year. Since its completion, the Coon Rapids Bridge has functioned in place, in essentially unaltered condition.

Soon after its re-formation in 1913, the state highway commission began delineating standard bridge designs for both pony and through truss configurations. ISHC engineers used these designs extensively for short- to medium-span crossings throughout the state in the 1920s and 1930s. But deck trusses, with the steel superstructure below the roadway deck, were seldom employed, due in large part to minimal clearance heights on Iowa's rivers and streams. The Coon Rapids Bridge is a notable exception to this trend. Configured as a three-span deck truss, it represents an uncommon departure from standardized design. In fact, it is the last remaining Warren deck truss in the state designed by ISHC. As such the Coon Rapids Bridge is a technologically significant example of this somewhat esoteric structural type. In well-preserved condition, it is an important transportation-related resource.

NAME(S) OF STRUCTURE

Coon Rapids Bridge (Sumpter Avenue Bridge)

PHOTOS AND SKETCH MAP OF LOCATION**LOCATION MAP**

TAKEN FROM IOWA DEPARTMENT OF TRANSPORTATION
HIGHWAY AND TRANSPORTATION MAP

SOURCES

Iowa Department of Transportation, Structure Inventory and Appraisal: Structure Number 002540; Carroll County Board of Supervisors' Minutes, Book I, Volume 1: page 275 (13 November 1922) - located at the Carroll County Courthouse, Carroll IA; field inspection by Clayton Fraser and Richard Collier, 27 January 1991.

INVENTORIED BY

Clayton B. Fraser

AFFILIATION

Fraserdesign, Loveland CO

DATE

21 January 1992

MEMORANDUM OF AGREEMENT

SUBMITTED TO THE ADVISORY COUNCIL ON HISTORIC PRESERVATION
PURSUANT TO 36 CFR 800.6(a)

Sumpter Avenue Bridge

City of Coon Rapids
Carroll County, Iowa

BRM-1542(1)--8N-14

WHEREAS, the Federal Highway Administration (FHWA) has determined that the replacement of the 1922 steel deck truss bridge, known as the Sumpter Avenue Bridge, FHWA structure #002540, in order to construct a new bridge to carry local road traffic over the Middle Raccoon River Bridge in the City of Coon Rapids would have an adverse effect upon this property which is listed on the National Register of Historic Places (NRHP), and has consulted with the Iowa State Historic Preservation Officer (SHPO) pursuant to 36 CFR Part 800 regulations implementing Section 106 of the National Historic Preservation Act (16 U.S.C. Section 470f).

WHEREAS, the Iowa Department of Transportation and representatives of the City of Coon Rapids participated in the consultation and have been invited to concur in this Memorandum of Agreement (MOA);

NOW, THEREFORE, FHWA and the Iowa SHPO agree that the undertaking shall be implemented in accordance with the following stipulations in order to take into account the effect of the undertaking on historic properties.

STIPULATIONS

FHWA will ensure that the following measures are carried out:

1. Prior to the demolition of any part of the existing bridge, the city shall have the bridge recorded according to the documentation plan of the "*Iowa Historic Property Study: Bridge*" attached as Appendix A.

2. The recordation cited in stipulation 1 shall be performed by a person or firm who is acceptable to SHPO and who meets the Secretary of the Interior's professional qualification standards in history or architectural history as set forth in 48 FR 44738-44739.
3. The recordation document shall be reviewed for professional and technical compliance with recommendations and guidelines in Appendix A by the Iowa SHPO with photo copies of the study provided to the Carroll County Historical Society, the Coon Rapids Public Library and the Carroll Public Library.
4. If the stipulations of this Memorandum of Agreement have not been implemented by August 1, 2002, the consulting parties shall review its provisions to determine whether revisions are needed. If revisions are needed, the signatories will consult in accordance with 36 CFR Part 800 to make such revisions.
5. When the bridge is demolished, FHWA will notify the SHPO within 30 days of the bridge demolition, so that the property may be removed from the list of properties on the National Register of Historic Places.

Execution of this Memorandum of Agreement by FHWA and the Iowa SHPO, its subsequent acceptance by the Council, and implementation of its terms, evidence that FHWA has afforded the Council an opportunity to comment on this bridge replacement project and its effects on historic properties, and that FHWA has taken into account the effects of the undertaking on historic properties.

Signed:

By:	<u>Philip J. Taylor</u> FHWA Iowa Division	<u>11-9-99</u> Date
By:	<u>Patricia Chinkin</u> Iowa State Historic Preservation Officer	<u>11-3-99</u> Date
Concur:		
By:	<u>Mike Davis - Mayor</u> City of Coon Rapids	<u>9-14-99</u> Date
By:	<u>Harry S. Reed</u> Iowa DOT	<u>9/17/99</u> Date

Appendix A

Iowa Historic Property Study: Bridge

The documentation identified below is for Iowa bridge properties of state and local significance. It is to be written for a broad public audience—kept simple, direct, and free of technical and academic jargon. The information is to be presented (i.e., edited, cataloged and packaged) in accordance with Historic Preservation Bureau guidelines. In its content, quality, materials, and presentation, the study will meet the Secretary of Interior's four standards for architectural and engineering documentation (48 FR 44731).

The purpose of the report will be to place the bridge in engineering and historical perspective. Emphasis is to be on its local or state historical context because the specific engineering qualities of the bridge have already largely been covered in the statewide 1993 Historic Bridge Inventory, prepared by consultant Fraserdesign for the Iowa Department of Transportation. Of course, new research information that modifies or corrects previous survey findings will be cited.

The research emphasis will be placed on recovering information about local or state context surrounding the building of the bridge based on primary sources to the greatest extent possible. Thus, the weight of total effort is to be given not to elaborate engineering description or structure photography, but to amplifying what is known about the story of the bridge as grasped through research in local newspapers, courthouse records, etc.. The test of responsiveness to documentation projects under this historic property study series will be more on the depth of local historical sources consulted than on the numbers of site photographs produced.

The documentation prepared for the purpose of inclusion in the State Historical Society of Iowa's collections must meet the requirements below. The Society's historic preservation office retains the right to refuse to accept documentation for inclusion in its collections when that documentation (edited, cataloged, and packaged) does not meet requirements as specified below.

Kinds of Documentation to be Gathered:

1. *Iowa Site Inventory Number and Historical Architectural Data Base Number:* Two report reference numbers are to be obtained from the statewide inventory coordinator at the State Historical Society's historic preservation office. The first is the Iowa Site Inventory Number, which can be assigned upon providing a specific street address in a town or city or, for rural areas, its quarter section, township and range. This number would be cited in the report, appear on reference maps and site plans, and be identified on photographic prints, slides, etc. The second number refers to the number assigned for entering this report into the state's Historic Architectural Data Base (HADB) through completing the HADB form for inclusion in the appendix.
2. *Photographs:* Unless stipulated elsewhere, the coverage will be field photography, with each view made with both 35mm black and white film and Kodachrome-64 color slides. The black and white photographs shall be on fiber-based papers or on resin-coated papers of double or medium-weight paper that have been processed in trays in order to meet guidelines outlined in National Register Bulletin 16A. The documentation is to meet requirements for ready inclusion

in the records of the State Historical Society of Iowa. The minimum number and kind of views taken will be in accord with those assigned in diagrams for recording bridge details illustrated by bridge historian, James C. Hippen. Other views will include at least two contextual views showing the bridge's placement on the landscape plus, as needed, special shots of the particular bridge in order to adequately illustrate what is significant or valuable about the structure(s).

3. *Existing drawings* of the bridge either as built or altered, if available, will be selected and appropriately reproduced.
4. *Available historic photographs or illustrations* that reveal the bridge under construction or in later use will be selected and appropriately reproduced.
5. *Basic bridge facts* about its origins, design and construction features will be handled by attaching as the lead element of the appendix of the report a copy of the completed survey and HAER inventory forms contained in the 1993 Historic Bridge Inventory, prepared by consultant Fraserdesign for the Iowa Department of Transportation.
6. *Narrative Report*, printed on archival bond paper, of approximately ten pages. Statements within the narrative are to be footnoted as to their sources, where appropriate. The format for presentation is stated below.

Format for the Narrative Report:

Cover Page:

Includes report title, governmental entity or source of support for sponsoring the survey, author/authors, name of affiliated firm or research organization, date of report.

Acknowledgments (if applicable)

This might include acknowledgment of valuable oral informants, or recognition of those who provided useful research leads, tendered special library assistance or helped locate and access useful courthouse archives.

Table of Contents

Introduction:

Describes purpose of project, time frame when research and field work occurred, and limitations of the project.

Part I: The Bridge Today takes the reader to the property, describing where it is situated, its general appearance, and important physical characteristics of its setting and landscape features that have influenced the way things developed.

Part II: Historical Background steps back to explain the bridge's time of original construction. Based on newspaper and other available sources, the narrative will seek to explain such developments as:

1. The impetus for construction of the bridge (e.g., local landowners, new transportation route, destruction of previous bridge);
2. The reason for designing or placing this particular kind of bridge at this location (e.g.,

- a particular design preferred by the county engineer, a particular bridge company favored by contracts)
3. Selection of this particular bridge and its fabricator.

Part III: Construction history documents the physical evolution of the bridge and subsequent alterations.

Aspects to bear in mind include:

2. Story of building the bridge and by whom it was done. Special emphasis will be on significant events in the building process, such as technical or financial problems faced, construction delays, and the need to redesign details or re-fabricate elements.
3. Later changes to the bridge, identifying what was done and why it was made necessary.

Part IV: Significance of the bridge. State in what way the bridge helps interpret local and state development in transportation or contribute to understanding how a type, period or method of construction developed, or exemplify the achievement of person(s) who designed or built it.

This might address such matters as:

1. The role that this bridge played in local transportation and political, industrial or social history. Indicate, if known, how its completion was received and recognized as important by the public as gleaned through notices of celebrations, picnics, orators present at the opening of the structure for use.
2. The relative place of the bridge designer/bridge company in local and state history.
3. The bridge as a demonstration of new, innovative, or typical bridge design practices and uses of material.

Available photographs, illustrations, or site plan will be integrated into the narrative as needed to help convey the property's interpretive value.

Part IV: Reference Sources

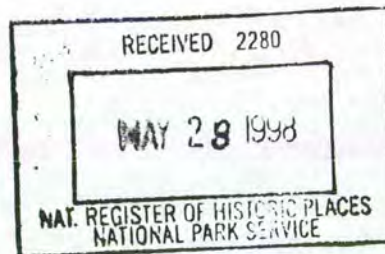
A paragraph or two about the quality and quantity of information consulted, its location, noting any conflicts in source materials, their accuracy, biases or noteworthy historical perspectives. This would be followed by a bibliography of the reference source materials.

Part V: Appendices

The information here—if not placed elsewhere in the report—would include, but not be limited to, the following:

1. A copy of the completed survey and HAER inventory forms contained in the 1993 Historic Bridge Inventory, prepared by consultant Fraserdesign for the Iowa Department of Transportation.
2. A site plan drawing showing the bridge's relation to immediate landscape and river/road configuration.
3. Map(s) showing location in county/town, changes in property size, etc.
4. A 5" X 7" enlargement of each black and white view taken to satisfy specifications above, arranged sequentially, from the most general view to the most detailed view. Each is to be labeled on the back as to bridge name, Iowa Site Inventory Number, and roll/frame number with a No. 1 (soft) pencil or archival pen, and placed in Print-File (57-4P), or equivalent, sleeve. Photographs on paper that will not accept pencil marks (including certain resin-coated papers) may be labeled with an archivally stable, permanent audio-visual marking pen, as per instructions on page 65 of *National Register Bulletin 16A*.
5. A "Photograph Catalog Field Sheet" for each sleeve of black and white negatives and

- for each 20-slot sleeve of color slides.
6. Negatives of 35mm (ASA 125 or less) black and white film in Print-File (35-7B), or equivalent, sleeves.
 7. A contact print for each roll of black and white film placed in a Print-File (810-1B), or equivalent, sleeve.
 8. Kodachrome-64 slides properly labeled (property name, Iowa Site Inventory Number, and Slide sleeve number/slot number) and placed in Print-File (2x2-20B), or equivalent, 20-slot sleeves.
 9. Completed Iowa Historical Architectural Data Base (HADB) form.
 10. Other relevant information (e.g., photocopy of biographical information about the bridge builder).



United States Department of the Interior
National Park Service

National Register of Historic Places
Registration Form

This form is for use in nominating or requesting determinations for individual properties and districts. See instructions in *How to Complete the National Register of Historic Places Registration Form* (National Register Bulletin 16A). Complete each item by marking "x" in the appropriate box by entering the information requested. If an item does not apply to the property being documented, enter "N/A" for "not applicable." For functions, architectural classification, materials, and areas of significance, enter only categories and subcategories from the instructions. Place additional entries and narrative items on continuation sheets (NPS Form 10-900a). Use a typewriter, word processor, or computer, to complete all items.

Name of Property

Historic name Coon Rapids Bridge

Other names/site number _____

Location

Street & number Sumpter Avenue over Middle Racoon River ☐ not for publication

City or town Coon Rapids ☐ vicinity

State Iowa code IA county Carroll code 027 zip code 50058

State/Federal Agency Certification

As the designated authority under the National Historic Preservation Act, as amended, I hereby certify that this ☒ nomination request for determination of eligibility meets the documentation standards for registering properties in the National Register of Historic Places and meets the procedural and professional requirements set forth in 36 CFR Part 60. In my opinion, the property ☒ meets ☐ does not meet the National Register criteria. I recommend that this property be considered significant ☐ nationally ☒ statewide ☐ locally. (☐ See continuation sheet for additional comments.)

Patricia Chumkins DSHPD 5-6-98
Signature of certifying official/Title Date

State or Federal agency and bureau

In my opinion, the property ☐ meets ☐ does not meet the National Register criteria. (☐ See continuation sheet for additional comments.)

Signature of certifying official/Title Date

State or Federal agency and bureau

National Park Service Certification

I hereby certify that the property is:

- ☒ entered in the National Register
☐ See continuation sheet
☐ determined eligible for the National Register
☐ See continuation sheet
☐ determined not eligible for the National Register
☐ removed from the National Register
☐ other, (explain):

Edson H. Beall 6-25-98

Classification		
Ownership of Property (Check as many boxes as apply)	Category of Property (Check only one box)	Number of Resources within Property (Do not include previously listed resources in the count)
<input type="checkbox"/> private	<input type="checkbox"/> building(s)	Contributing Noncontributing
<input type="checkbox"/> public-local	<input type="checkbox"/> district	0 0 buildings
<input type="checkbox"/> public-State	<input type="checkbox"/> site	0 0 sites
<input type="checkbox"/> public-Federal	<input checked="" type="checkbox"/> structure	1 0 structures
	<input type="checkbox"/> object	0 0 objects
		1 0 Total
Name of related multiple property listing (Enter "N/A" if property is not part of a multiple property listing)		Number of contributing resources previously listed in the National Register
Highway Bridges of Iowa		0

Function or Use	
Historic Functions (Enter categories from instructions)	Current Functions (Enter categories from instructions)
TRANSPORTATION/road-related	TRANSPORTATION/road-related

Description	
Architectural Classification (Enter categories from instructions)	Materials (Enter categories from instructions)
other: riveted Warren deck truss	foundation
	walls
	roof N/A
	other N/A

Historic Narrative Description
Describe the historic and current condition of the property on one or more continuation sheets)

located in Coon Rapids, the Coon Rapids Bridge spans the Middle Raccoon River in a small-town setting that has changed little since the structure's period of significance. A description of the structure follows:

span number: 3	construction date: 1922-23
span length: 95.0'	construction cost: \$29,250.00 (contract amount)
total length: 242.0'	current condition: good
roadway wdt.: 34.0'	alterations: none

superstructure: steel, 7-panel, rigid-connected Warren deck truss
 substructure: concrete abutments and wingwalls; concrete piers
 floor/decking: asphalt and concrete deck over steel stringers
 other features: upper chord: 2 channels with lacing; inclined end post: 2 angles with batten plates; lower chord: 2 angles with batten plates; vertical: 2 channels with lacing; diagonal: 2 angles with batten plates; lateral bracing: 1 angle; strut: 2 angles; floor beam: I-beam; guardrail: concrete with slotted, chamfered balusters; concrete sidewalks cantilevered from truss on both sides; bridge plate: Coon Rapids Bridge / Construction Authorized by Carroll / County Board of Supervisors / Design by Iowa Highway Commission / Built by Lundgren-Reis Company / 1923

Other than maintenance-related repairs, the Coon Rapids Bridge remains essentially unaltered as it continues to carry vehicular traffic. It retains a high degree of integrity of location, design, setting, materials, workmanship, feeling and association.

Statement of Significance**Applicable National Register Criteria**

Mark "X" in one or more boxes for the criteria qualifying the property for National Register listing)

- ☐ **A** Property is associated with events that have made a significant contribution to the broad patterns of our history.
- ☐ **B** Property is associated with the lives of persons significant in our past.
- ☒ **C** Property embodies the distinctive characteristics of a type, period, or method of construction or represents the work of a master, or possesses high artistic values, or represents a significant and distinguishable entity whose components lack individual distinction.
- ☐ **D** Property has yielded, or is likely to yield, information important in prehistory or history.

Criteria Considerations

Mark "X" in all the boxes that apply)

Property is:

- ☐ **A** owned by a religious institution or used for religious purposes.
- ☐ **B** removed from its original location.
- ☐ **C** a birthplace or grave.
- ☐ **D** a cemetery.
- ☐ **E** a reconstructed building, object, or structure.
- ☐ **F** a commemorative property.
- ☐ **G** less than 50 years of age or achieved significance within the past 50 years.

Narrative Statement of Significance

(Explain the significance of the property on continuation sheets.)

Areas of Significance

(Enter categories from instructions)

Period of Significance

1922-23

(The period of significance is derived from the original construction date.)

Significant Dates

1922-23 (construction date)

Significant Person

(Complete if Criterion B is marked above)

N/A

Cultural Affiliation

N/A

Architect/Builder

designer:

Iowa State Highway Commission

fabricator:

unknown

builder:

Lundgren-Reis Construction Company

Major Bibliographical References**Bibliography**

Cite the books, articles, and other sources used in preparing this form on one or more continuation sheets.)

Previous documentation on file (NPS):

- ☐ preliminary determination of individual listing (36 CFR 67) has been requested
- ☐ previously listed in the National Register
- ☐ previously determined eligible by the National Register
- ☐ designated a National Historic Landmark
- ☐ recorded by Historic American Buildings Survey
- ☐ recorded by Historic American Engineering Record

Primary location of additional data:

- ☒ State Historic Preservation Office
- ☐ other State agency
- ☐ Federal agency
- ☐ Local government
- ☐ University
- ☐ other
- name of repository:

1. Geographical DataAcreage of Property less than one acre**UTM References**

(Place additional UTM references on a continuation sheet)

15 360805 4635920

zone easting northing

2

zone easting northing

Verbal Boundary Description

(Describe the boundaries of the property)

The nominated property is a rectangular-shaped parcel measuring 36 feet by 242 feet, which is entered on the UTM point(s) listed above. Included within this rectangular parcel are the bridge's superstructure, substructure, approach spans and floor system.

Boundary Justification

(Explain why the boundaries were selected)

The nominated structure includes the bridge's superstructure, substructure, floor system, any approach spans and the property on which they rest. These boundaries encompass, but do not exceed, all of the property that has been historically associated with the bridge.

2. Form Prepared ByName/title Clayton B. FraserOrganization FraserdesignDate 31 August 1994Street & number 1269 Cleveland AvenueTelephone 303-669-7969City or town LovelandState Colorado zip code 80537**Additional Documentation**

(Submit the following items with the completed form:

Continuation Sheets**Maps**

A USGS map (7½ or 15 minute series) indicating the property's location

A Sketch map for historic districts and properties having large acreage or numerous resources

Photographs

Representative black and white photographs of the property

Additional Items

(Check with the SHPO or FPO for any additional items)

Property Owner

(Complete this item at the request of SHPO or FPO)

Name/title City of Coon RapidsStreet & number 123 Third AvenueTelephone 712-684-7749City or town Coon RapidsState Iowa zip code 50058

Paperwork Reduction Act Statement: This information is being collected for applications to the National Register of Historic Places to nominate properties for listing or determine eligibility for listing, to list properties, and to amend existing listings. Response to this request is required to obtain a benefit in accordance with the National Historic Preservation Act, as amended (16 U.S.C. 470 et seq.).

Estimated Burden Statement: Public reporting burden for this form is estimated to average 18.1 hours per response including time for reviewing instructions, gathering and maintaining data, and completing and reviewing the form. Direct comments regarding this burden estimate or any aspect of this form to the Chief, Administrative Services Division, National Park Service, P.O. Box 37127, Washington, DC 20013-7127; and the Office of Management and Budget, Paperwork Reduction Projects (1024-0018), Washington, DC 20503.

United States Department of the Interior
National Park Service

National Register of Historic Places
Continuation Sheet

Section Number 8 Page 1 Coon Rapids Bridge Carroll County; Iowa

Located on Sumpter Avenue in the town of Coon Rapids, this rigid-connected steel truss spans the Middle Raccoon River. The Coon Rapids Bridge is comprised of a seven-panel Warren deck truss over the river's main channel, with shallower and shorter deck truss approach spans on both ends. The deck is concrete, supported by steel stringers that bear on floor beams on the trusses' upper chords, and concrete sidewalks cantilever from the trusses' webs on both sides. The Coon Rapids Bridge was engineered as a special design by the Iowa State Highway Commission in 1922. Designated Primary Bridge Project No. B113 on Primary Road No. 46, the bridge would replace an earlier iron or steel bridge at this crossing. Its construction was let out for competitive bids in October 1922; on November 13th a contract was awarded to the Lundgren-Reis Construction Company of Des Moines for \$29,250.00. Lundgren-Reis began work on the substructure soon thereafter, completing the bridge the following year. Since its completion, the Coon Rapids Bridge has functioned in place, in essentially unaltered condition.

Soon after its re-formation in 1913, the state highway commission began delineating standard bridge designs for both pony and through truss configurations. ISHC engineers used these designs extensively for short- to medium-span crossings throughout the state in the 1920s and 1930s. But deck trusses, with the steel superstructure below the roadway deck, were seldom employed, due in large part to minimal clearance heights on Iowa's rivers and streams. The Coon Rapids Bridge is a notable exception to this trend. Configured as a three-span deck truss, it represents an uncommon departure from standardized design. In fact, it is the last remaining Warren deck truss in the state designed by ISHC. As such the Coon Rapids Bridge is a technologically significant example of this somewhat esoteric structural type. In well-preserved condition, it is an important transportation-related resource

**United States Department of the Interior
National Park Service**

**National Register of Historic Places
Continuation Sheet**

Section Number 9 Page 2 Coon Rapids Bridge Carroll County; Iowa

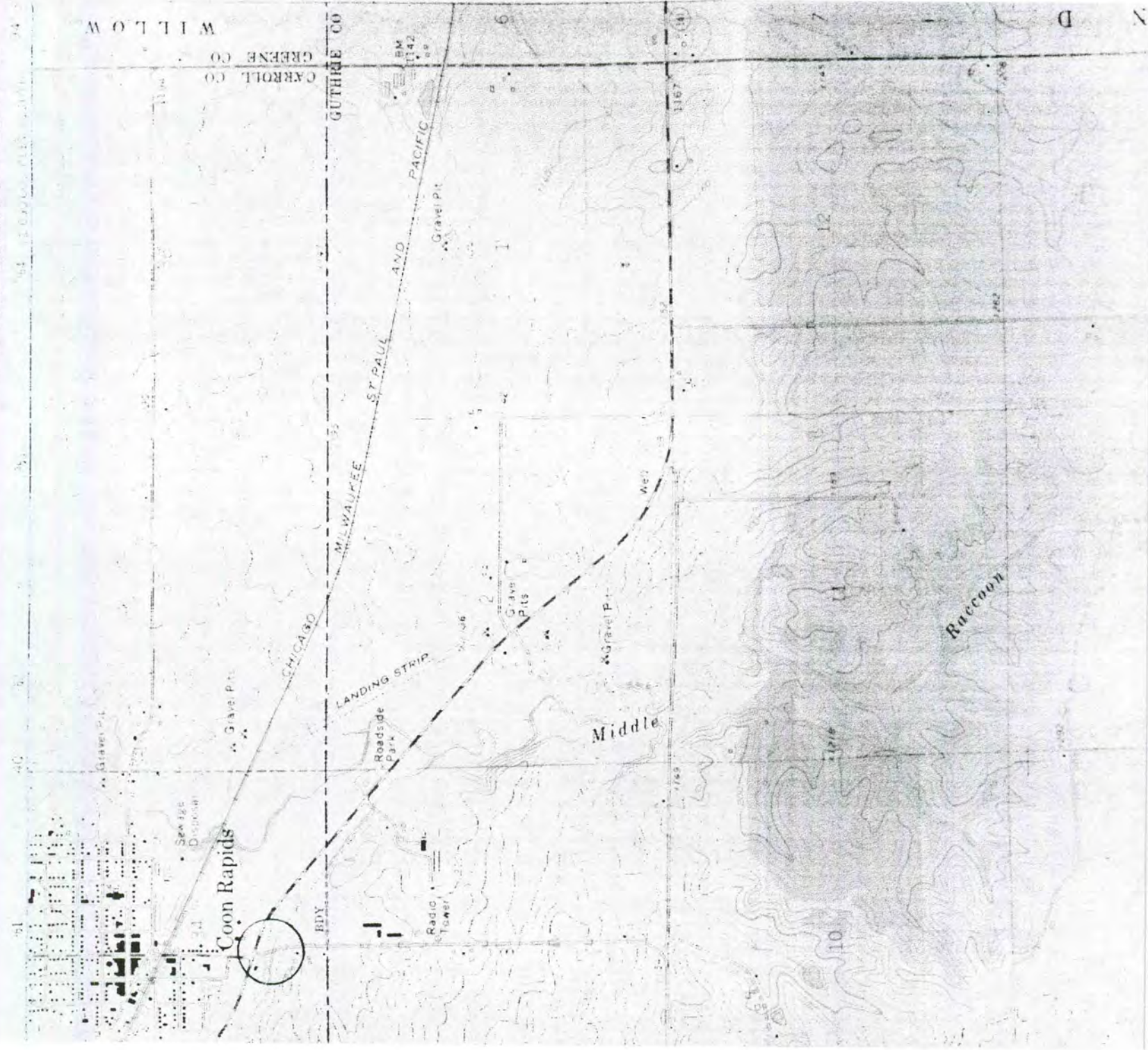
Iowa Department of Transportation, Structure Inventory and Appraisal: Structure No. 002540.

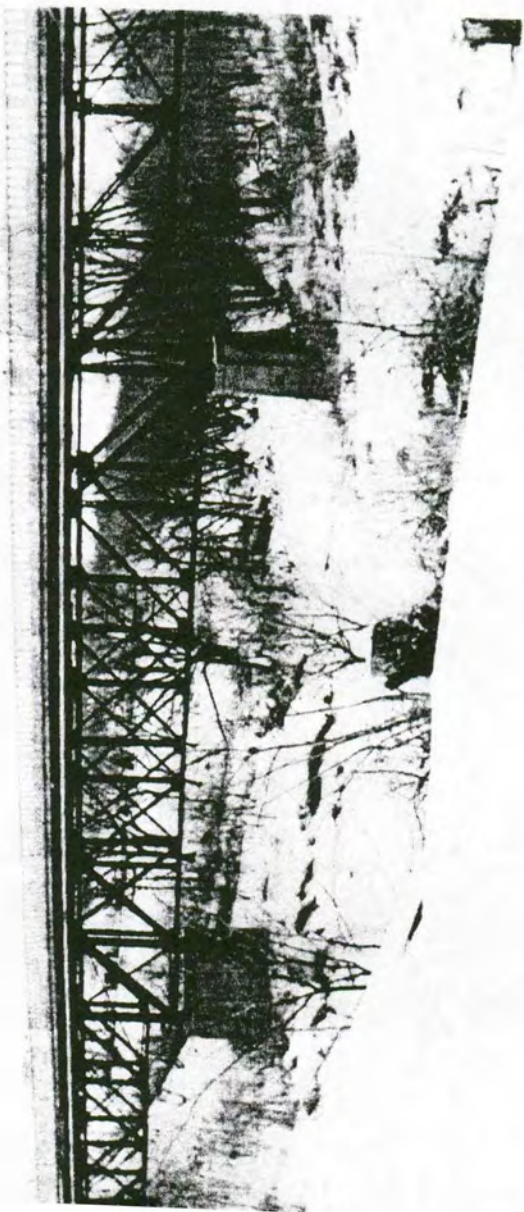
Carroll County Board of Supervisors' Minutes, Book I, Volume 1: page 275 (13 November 1922).

Field inspection by Clayton Fraser and Richard Collier, 27 January 1991.

This is
wrong - Smytha Ave. bridge is on
Coon Rapids North.

COON RAPIDS SOUTH QUADRANGLE
IOWA
15 MINUTE SERIES TOPOGRAPHIC





5/31 bars = 12' 6" $\sqrt{3} \cdot 8$ bars

SECTION C-C

Elev { E Aer 112833
W Aer 112769

0-1-18 2005
SECTION

Bridge No
Over Middle Gaon River
Sec. 35
Union Twp.
Carroll Co.

MULTIPLE: SAW DECK TRUSS BRIDGE

Complete Floor Abutments and Piers
~~Assignment and Rep Details~~
 5/10/2013 Primary Project No 226

Grand Highway Commission
Oct 1922

Sheet 2 of 4

Session No 74 Cannon Co 1922.

ELEVATION
Scale 5'-140

PLAN
Scale 5'-1"=1'-0"

f. SECTION
Scale 1:140

DETAIL OF POST OVER WING
Scale 1/2"=1'-0"

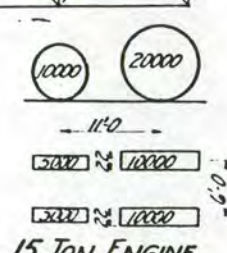
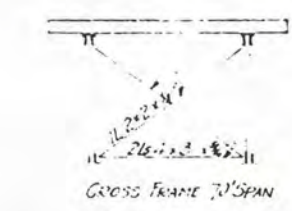
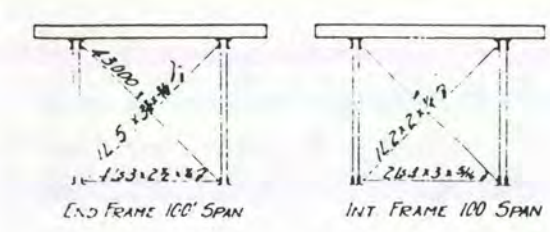
ELEVATION
Scale 1"=1'-0"

NAME PLATE

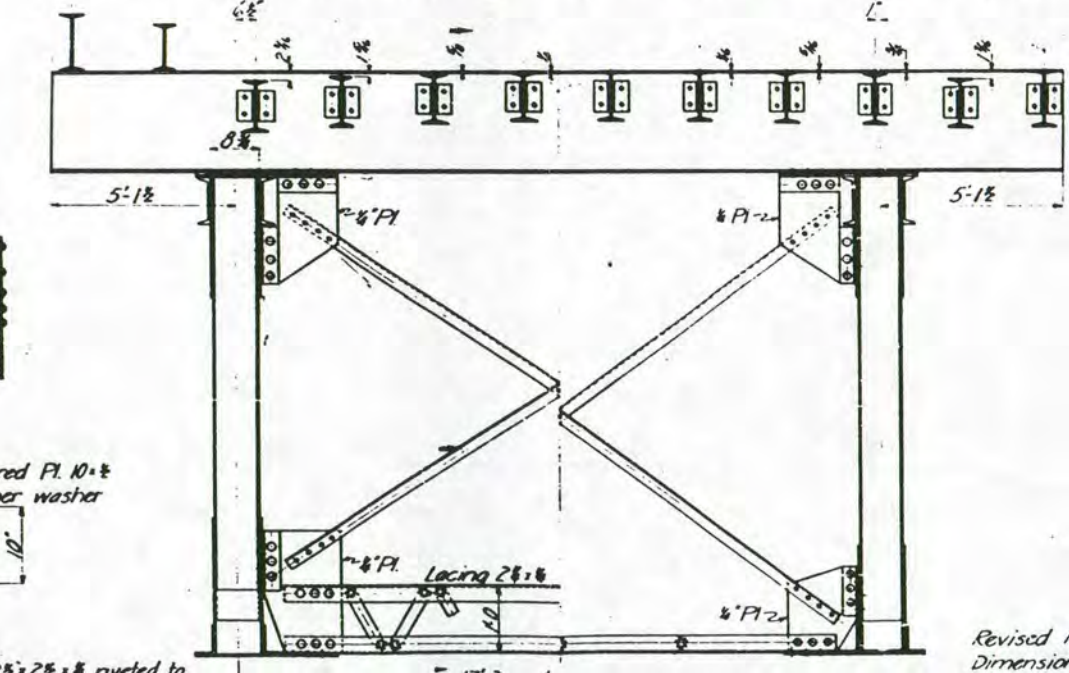
Note:- Suitable bronze name plate to be supplied by the contractor. Inscription to be supplied later.

PLAN
Book 6740

Sheet 2 of 4



6 2:1 ... 2:7 ... 2:4 1/2 ... 2:4 1/2 ... 2:4 1/2 ... 2:4 1/2 ... 2:4 1/2 ... 2:4 1/2 ... 2:1 1/2 ... 2:4 ... 2:4 6



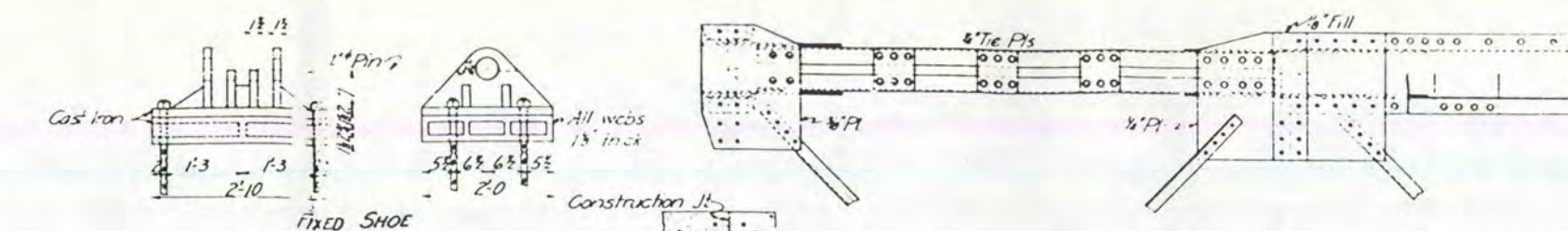
17-3 C.C. trusses

HALF END FRAME HALF INT. FRAME

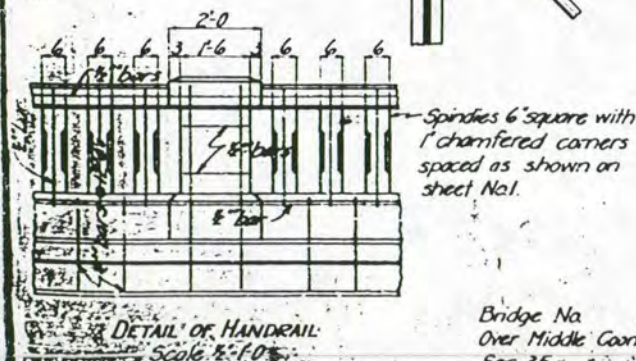
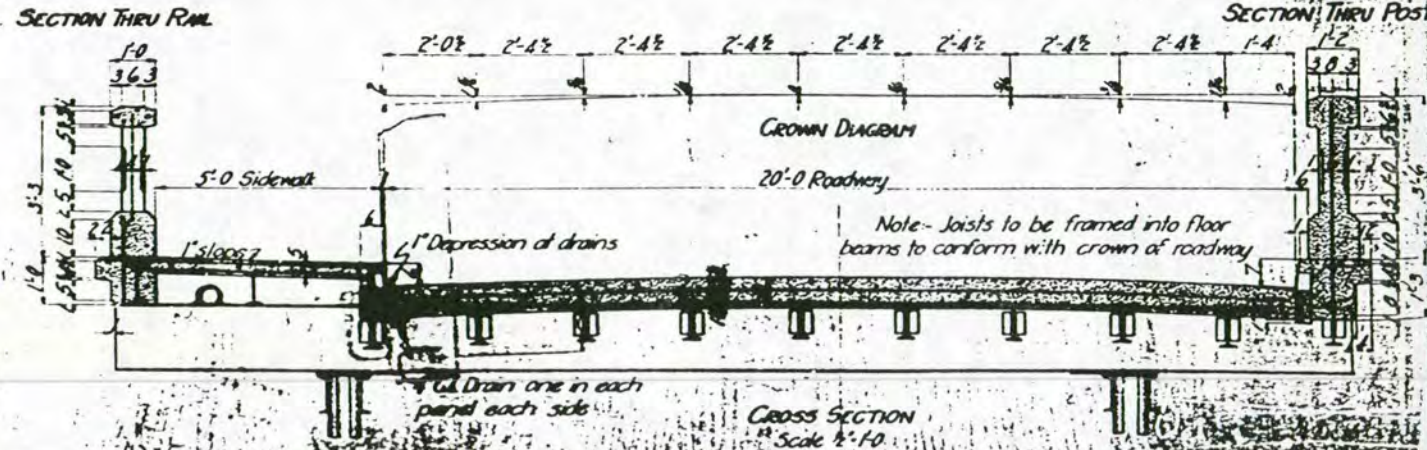
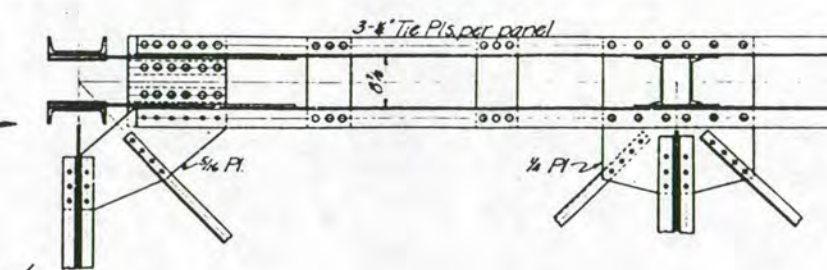
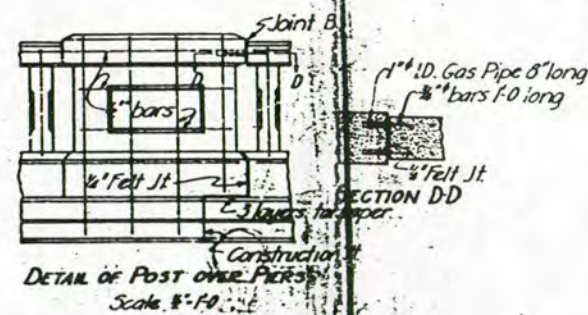
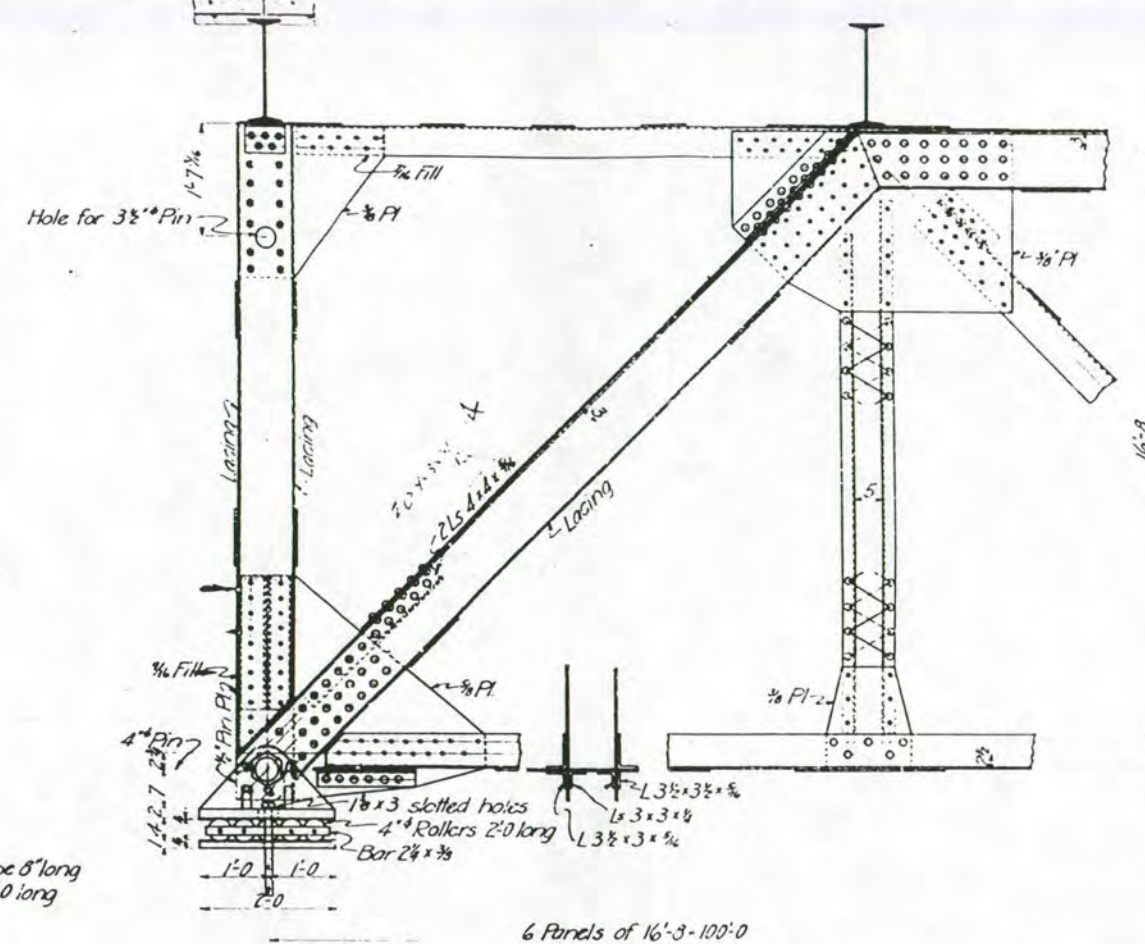
SECTION AA

DESIGN

Bridge No.
Over Middle Coon River
Sec 35
Union Twp
Correll Co



All rivets $\frac{3}{4}$ diam. except in
2" legs of Ls.
Camber - Increase top chord $\frac{3}{32}$
for each 10' of length.



Design for
MULTIPLE SPAN DECK TRUSS BRIDGE
1-100'x20' and 2-70'x20' Spans
Concrete Floor Abutments and Piers
DETAILS OF 100' SPAN AND ROADWAY SECTION
Sta 525+65 Primary Project No. 226
CARROLL COUNTY
Iowa Highway Commission
Oct 1922





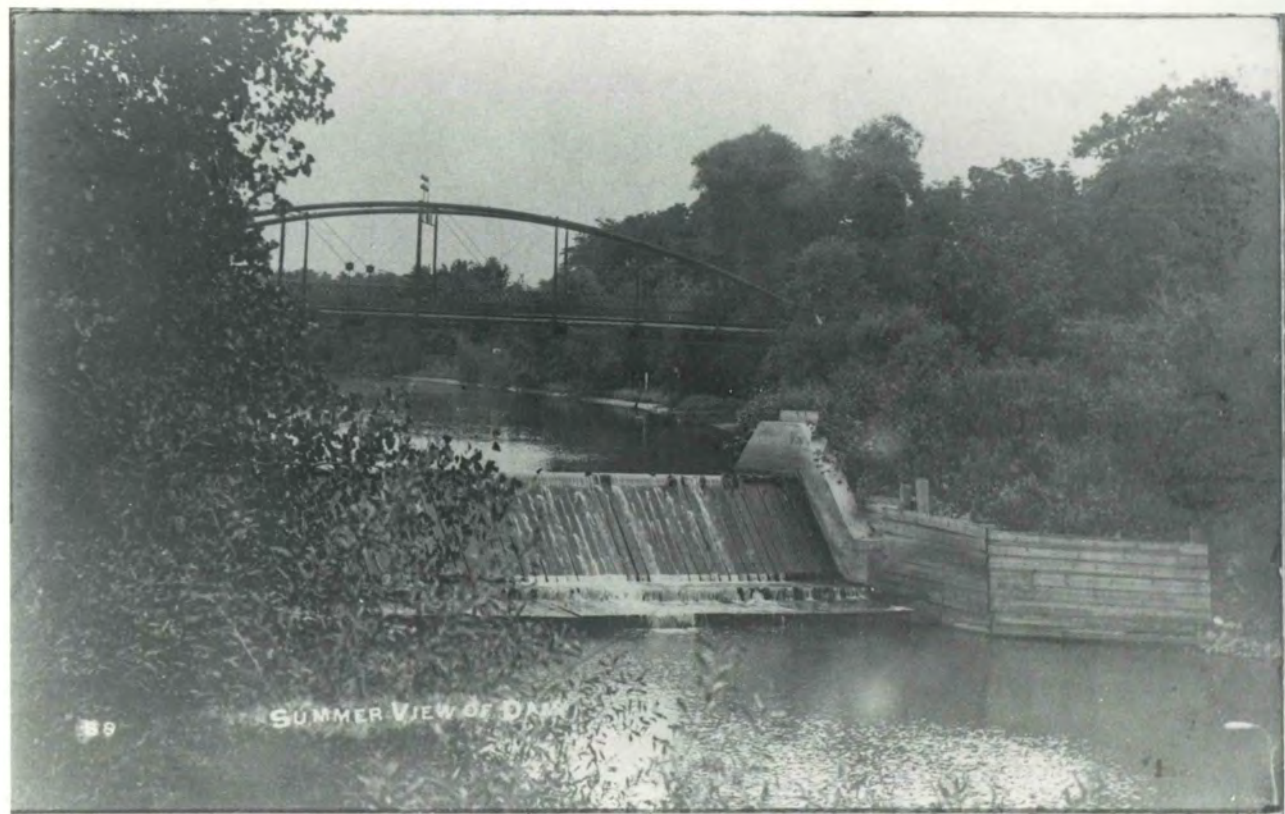












State Historical Society of Iowa

Community Programs Bureau
600 East Locust
Des Moines, IA 50319
(January 15, 1997)

PHOTO & SLIDE CATALOG SHEET

BLACK & WHITE PHOTO ROLL NO: 7221
COLOR SLIDE SHEET NO:
Date Entered Into SHPO System:

Photographer	Film Type	Negative Size
Marie A. Neubauer, Tallgrass Historians L.C.	PX-125	35mm

FRAME NUMBER	DATE TAKEN	SITE NAME AND LOCATIONAL INFORMATION	BUILDING TYPE, AGE AND OTHER NOTABLE FEATURES	FACING WHERE	SITE NUMBER
1-6	January 18, 2000	Coon Rapids Bridge Sumpter Ave. over the Middle Raccoon River Coon Rapids, Carroll County, Iowa	Warren deck truss bridge, 1922-23. Overall view of bridge.	nnw	14-00161
7-9	"	"	Remnants of dam south of bridge (downstream) from the east bank of the Middle Raccoon River	wnw	
10-12	"	"	Abutments of former Bowstring Bridge, located south of the present bridge, north of the dam remnants.	nw	
13-15	"	"	View of abutment/pier at west end of bridge.	wnw	14-00161
16-18	"	"	View of web system.	nw	"
19-21	"	"	Upper and Lower chords showing connections and single lacing of easternmost span.	n	"
22-24	"	"	Floor system, lateral bracing of easternmost span. View from the east bank pier.	ne	"

State Historical Society of Iowa

Community Programs Bureau

600 East Locust

Des Moines, IA 50319

January 15, 1997)

PHOTO & SLIDE CATALOG SHEET

BLACK & WHITE PHOTO ROLL NO: 7222

COLOR SLIDE SHEET NO:

Date Entered Into SHPO System:

Photographer	Film Type	Negative Size
Marie A. Neubauer, Tallgrass Historians L.C.	PX-125	35mm

FRAME NUMBER	DATE TAKEN	SITE NAME AND LOCATIONAL INFORMATION	BUILDING TYPE, AGE AND OTHER NOTABLE FEATURES	FACING WHERE	SITE NUMBER
1-7	January 18, 2000	Coon Rapids Bridge Sumpter Ave. over the Middle Raccoon River Coon Rapids, Carroll County, Iowa	Warren deck truss bridge, 1922-23. Views under roadway from east end.	sw	14-00161
8-10	"	"	View of bridge's east end approach from up the hill and across from the cemetery.	sw	"
11-13	"	"	Builder's plate on north side of east end of bridge.	ne	"
14-15	"	"	Bridge approach, west end.	ne	"
16-23	"	The following historic views were copied from a framed collage hanging in the Coon Rapids City Hall/Library lobby. Taped to the back of the frame is a card that reads: "So others may see what parts of Coon Rapids looked like in earlier years. I want to share these pictures in loving memory of Ethel Brutsche Riis and Dale P. Carpenter. Mrs. Dale (Adelaide) Carpenter"			
16-17		Bowstring Bridge "Summer View of Dam"			
18-19		"Coon River Bridge Coon Rapids, IA"			14-00161
20-21		"View of Mill Coon Rapids IA"			
22-23		Old envelope with text about Coon Rapids			

State Historical Society of Iowa

Community Programs Bureau

600 East Locust

Des Moines, IA 50319

(January 15, 1997)

PHOTO & SLIDE CATALOG SHEET

BLACK & WHITE PHOTO ROLL NO: 7223

COLOR SLIDE SHEET NO:

Date Entered Into SHPO System:

Photographer	Film Type	Negative Size
Marie A. Neubauer, Tallgrass Historians L.C.	PX-125	35mm

FRAME NUMBER	DATE TAKEN	SITE NAME AND LOCATIONAL INFORMATION	BUILDING TYPE, AGE AND OTHER NOTABLE FEATURES	FACING WHERE	SITE NUMBER
		Coon Rapids Bridge Sumpter Ave. over the Middle Raccoon River Coon Rapids, Carroll County, IA	Warren deck truss bridge, 1922-23.		14-00161
0-11		Historic photographs in the collection of John J. Schumacher of Coon Rapids, Iowa			
0-2		Bowstring bridge with new (present) bridge behind it. No caption or date recorded on photo.			
3-5		"Our \$32,000 Bridge across the Coon Coon Rapids, Iowa"			
6-8		"The City of the Dead Coon Rapids IA"			
9-11		"Garst Block Coon Rapids IA."			
12-13	January 18, 2000	Coon Rapids Bridge (Sumpter Ave. over the Middle Raccoon River) Coon Rapids, Carroll County, IA	Warren deck truss bridge, 1922-23. View of web system and pier.	w	14-00161
14-15	"	"	Detail of end joint and support, east end, south side.	n	"
16-17	"	"	View of cemetery	nne	

State Historical Society of Iowa

Community Programs Bureau

600 East Locust

Des Moines, IA 50319

(January 15, 1997)

PHOTO & SLIDE CATALOG SHEET

BLACK & WHITE PHOTO ROLL NO:

COLOR SLIDE SHEET NO: 1804

Date Entered Into SHPO System:

Photographer	Film Type	Negative Size
Marie A. Neubauer, Tallgrass Historians L.C.	Kodachrome 64	35mm

FRAME NUMBER	DATE TAKEN	SITE NAME AND LOCATIONAL INFORMATION	BUILDING TYPE, AGE AND OTHER NOTABLE FEATURES	FACING WHERE	SITE NUMBER
1	January 2000	Coon Rapids Bridge Sumpter Ave. over the Middle Raccoon River Coon Rapids, Carroll County, Iowa	Warren deck truss bridge, 1922-23. Builder's plate on north side of east end of bridge.	ne	14-00161
2	"	"	Overall view of bridge.	nnw	"
3	"	"	View of bridge's east end approach from up the hill and across from the cemetery.	sw	"
4	"	"	Bridge approach, west end.	ne	"
5	"	"	Abutments of former Bowstring Bridge, located south of the present bridge, north of the dam remnants.	nw	"
6	"	"	View of abutment/pier at west end of bridge.	wnw	"
7	"	"	View of web system.	nw	"
8	"	"	View of web system and pier.	w	"
9	"	"	Upper and Lower chords showing connections and single lacing of easternmost span.	n	"
10	"	"	View under roadway from the east end.	w	"
11	"	"	Floor system, lateral bracing of easternmost span. View from the east bank pier.	ne	"
12	"	"	Detail of end joint and support, east end, south side.	n	"

Historical Architectural Data Base

Data Entry Form for Studies and Reports

(1/28/97)

Doc. No.: 14-004

File Location: ☐ Report Series (County) ☐ Report Series (Multi-County)
☒ Site Inventory files with Site Inventory #: 14-00161

Source of Study: ☐ Certified Local Government Project ☒ Section 106 Review & Compliance Project
☐ Historical Resource Development Program Project ☐ Other

Project Reference #:

Authors/Editor/Compiler/Originator:

Jan Olive Nash, Tallgrass Historians L.C.

Author Role: ☒ Consultant ☐ Private Researcher/Writer ☐ Teacher ☐ Student
☐ Project employee/volunteer ☐ Site Administrator ☐ Other:

Title of Work:

"Will Likely Last a Thousand Years": Coon Rapids Bridge, Symbol of Progress

Year Issued: 2000

Type of Work Performed:

(check one only)

Survey:

- ☐ Windshield survey minimum level documentation
- ☐ Reconnaissance survey to make recommendations for intensive survey(s).
- ☐ Intensive survey
- ☐ Mixed intensive and reconnaissance survey

Plan:

- ☐ Planning for Preservation/Survey
- ☐ Community Preservation Plan

Property Study:

- | | |
|--|---|
| <input checked="" type="checkbox"/> Iowa Historic Property Documentation Study | <input type="checkbox"/> Historic Structure Report |
| <input type="checkbox"/> Historic American Building Survey (HABS) | <input type="checkbox"/> Feasibility/Re-use Study |
| <input type="checkbox"/> Historic American Engineering Record (HAER) | <input type="checkbox"/> Architectural/Engineering Plans and Specs. |
| <input type="checkbox"/> Management or Master Plan | |

National Register:

- ☐ Multiple Property Documentation Form

Other (e.g., private research, school project, video):

Kind of Work Produced:

(fill in one section only: Report or Monograph or Chapter, etc.)

Report: Published/produced by: Tallgrass Historians L.C.

Place issued: Iowa City, Iowa

Client: Calhoun-Burns and Associates, Inc.

If applicable, include:

Series Title:

Volume #: Report #:

Monograph: Publisher Name:

Place:

Chapter: In: First pg. #: Last pg. #:

Journal: Name: Vol. No. Pages: to

Thesis: Degree (check one): ☐ Ph.D. ☐ LL.D. ☐ M.A. ☐ M.S. ☐ B.A. ☐ B.S.

Name of College/University:

Paper: Meeting:

Place:

Other:

Geographic Scope of Study:

☒ City/town ☐ Township(s) ☐ County ☐ Region of Iowa ☐ Statewide ☐ Other:

State: IA — —

County: Carroll — —

Town: Coon Rapids — —

Township: 82N — —

Range: 33W — —

Time Focus: (check any decades that receive particular attention)

☐ before 1830 ☐ 1830s ☐ 1840s ☐ 1850s ☐ 1860s ☐ 1870s ☐ 1880s ☐ 1890s

☐ 1900s ☐ 1910s ☒ 1920s ☐ 1930s ☐ 1940s ☐ 1950s ☐ 1960s ☐ 1970s ☐ 1980/later

Keyword: (Index of any subjects, topics, or people given prominent attention in the report)

bridges

automobile

community

small town

newspaperman

Garst family

Coon Rapids Bridge

Roll 722.1

ARCHIVAL PRESERVERS
DATE 1-18-2000 ASSIGNMENT

FILE NO. 722.1



1 1A

2 2A

3 3A

4 4A

5 5A



6 6A

7 7A

8 8A

9 9A

10 10A



11 11A

12 12A

13 13A

14 14A

15 15A



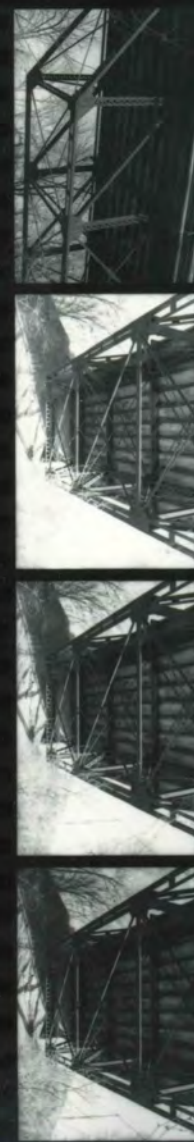
16 16A

17 17A

18 18A

19 19A

20 20A



21 21A

22 22A

23 23A

24 24A

STYLE NO. 810-2P

P.O. BOX 607638 • ORLANDO, FL 32860 • (407) 886-3100

Print File
ARCHIVAL PRESERVERS

Coon Rapids Bridge

Roll 7222

Print File
ARCHIVAL PRESERVERS

DATE 1-18-2000

ASSIGNMENT

FILE NO. 7222



Coon Rapids Bridge

Roll 7223

Print File
ARCHIVAL PRESERVERS
DATE: 1-20-2000 ASSIGNMENT

FILE NO. 7223

0 KODAK 5062 PX 1 KODAK 5062 PX 2 KODAK 5062 PX 3 KODAK 5062 PX 4 KODAK 5062 PX



0 1 2 3 4

KODAK 5062 PX KODAK 5062 PX KODAK 5062 PX KODAK 5062 PX KODAK 5062 PX



5 6 7 8 9

KODAK 5062 PX KODAK 5062 PX KODAK 5062 PX KODAK 5062 PX KODAK 5062 PX



10 11 12 13

KODAK 5062 PX KODAK 5062 PX KODAK 5062 PX KODAK 5062 PX

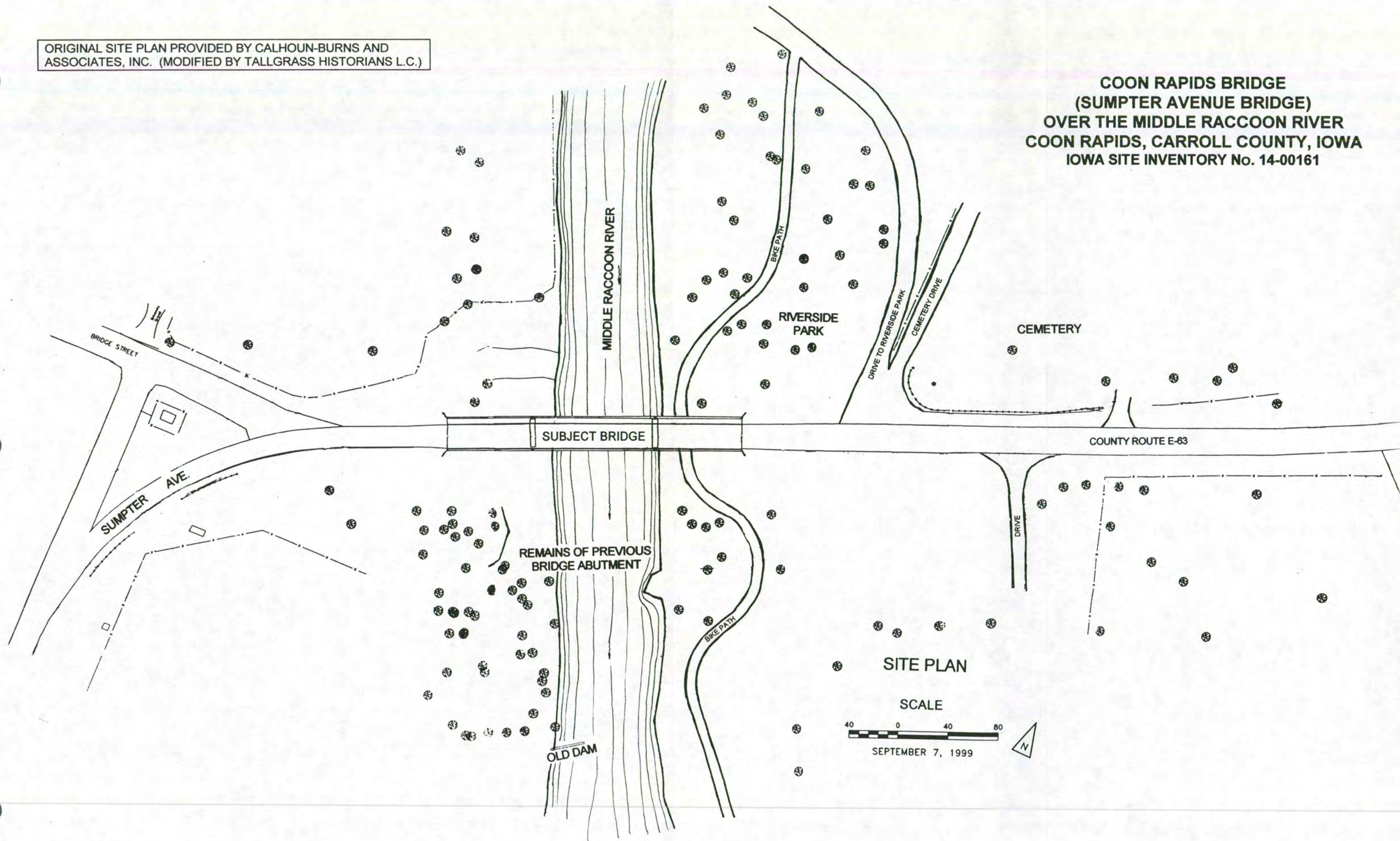


14 15 16 17

KODAK 5062 PX KODAK 5062 PX KODAK 5062 PX KODAK 5062 PX

ORIGINAL SITE PLAN PROVIDED BY CALHOUN-BURNS AND ASSOCIATES, INC. (MODIFIED BY TALLGRASS HISTORIANS L.C.)

**COON RAPIDS BRIDGE
(SUMPTER AVENUE BRIDGE)
OVER THE MIDDLE RACCOON RIVER
COON RAPIDS, CARROLL COUNTY, IOWA
IOWA SITE INVENTORY No. 14-00161**



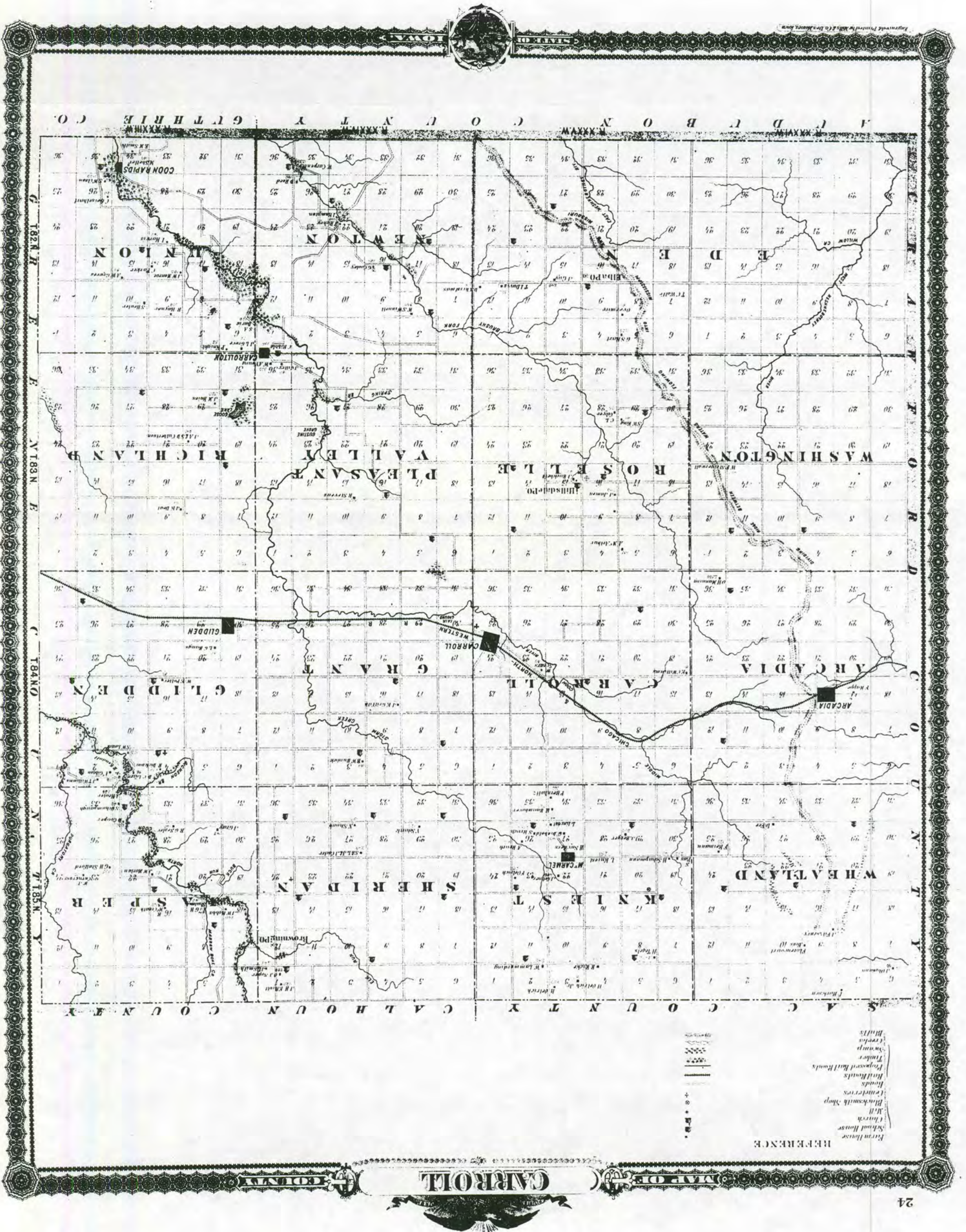
SITE PLAN

SCALE



SEPTEMBER 7, 1999





STATE LIBRARY OF IOWA



3 1723 02118 7273