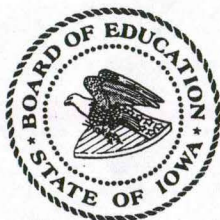


# INDICATORS OF STUDENT SUCCESS

*State Board of Education*

1999 Report



3-1862

State of Iowa  
**Department of Education**  
Grimes State Office Building  
Des Moines, Iowa  
50319-0146

### **State Board of Education**

Corine A. Hadley, President, Newton  
Sally Frudden, Vice President, Charles City  
C. W. Callison, Burlington  
Gregory A. Forristall, Macedonia  
Gregory D. McClain, Cedar Falls  
Mary Jean Montgomery, Spencer  
Gene E. Vincent, Carroll  
Kay E. Wagner, Bettendorf  
John C. White, Iowa City

### **Administration**

Ted Stilwill, Director and Executive Officer  
of the State Board of Education  
Dwight R. Carlson, Assistant to the Director  
Gail Sullivan, Chief of Policy and Planning

### **Division of Financial and Information Services**

Leland Tack, Administrator

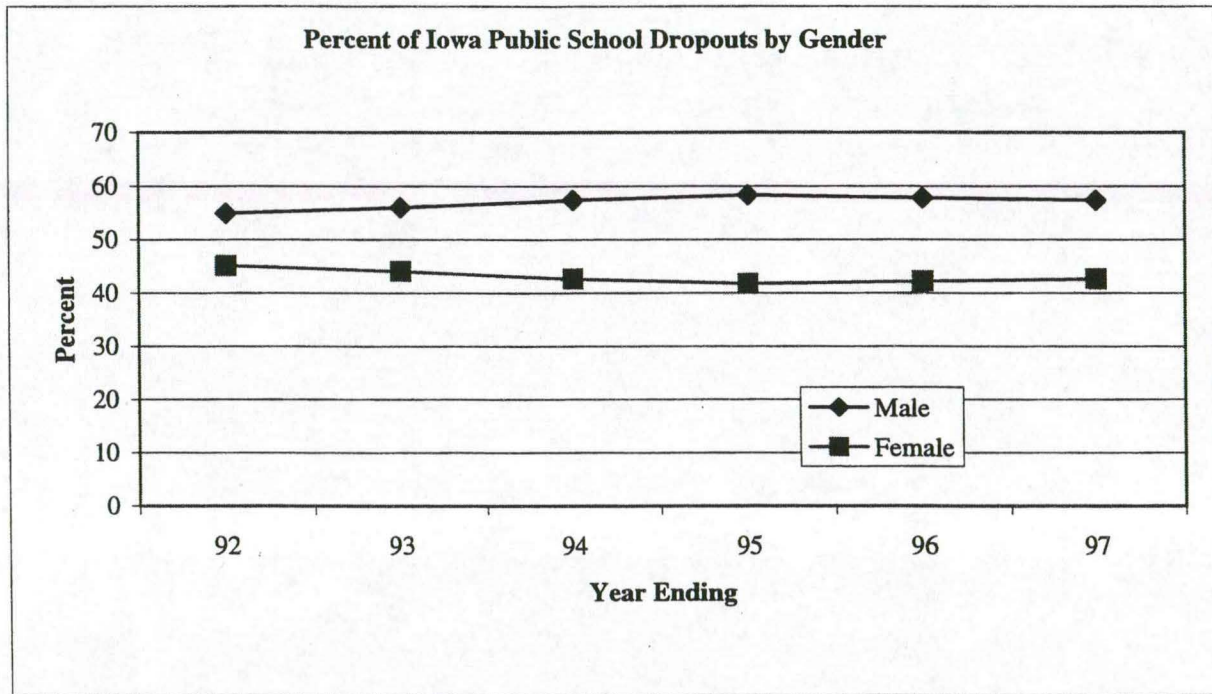
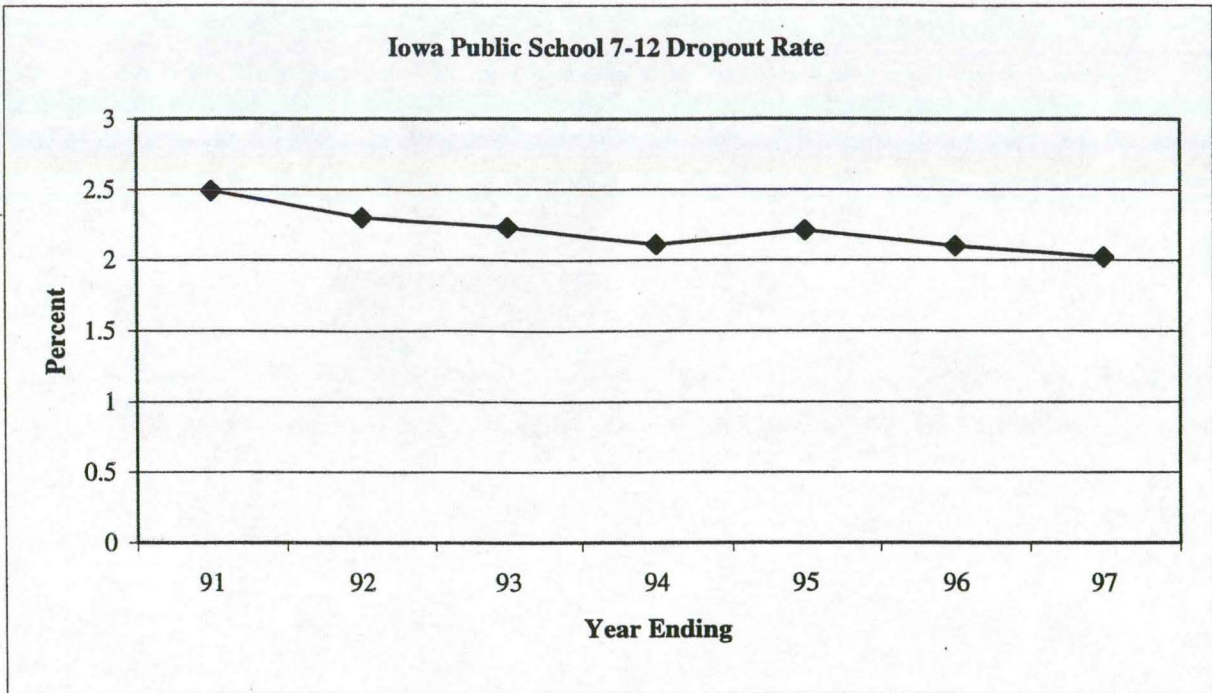
### **Bureau of Planning, Research & Evaluation**

David J. Alvord, Chief  
Steve Boal, Consultant  
Mary Jo Bruett, Referral Specialist

It is the policy of the Iowa Department of Education not to discriminate on the basis of race, color, national origin, gender, disability, religion, creed, age or marital status in its programs or employment practices. If you have questions or grievances related to this policy please contact Ann Marie Brick, Legal Consultant, Office of the Director, Grimes State Office Building, Des Moines, Iowa 50319-0146, (515) 281-5295.

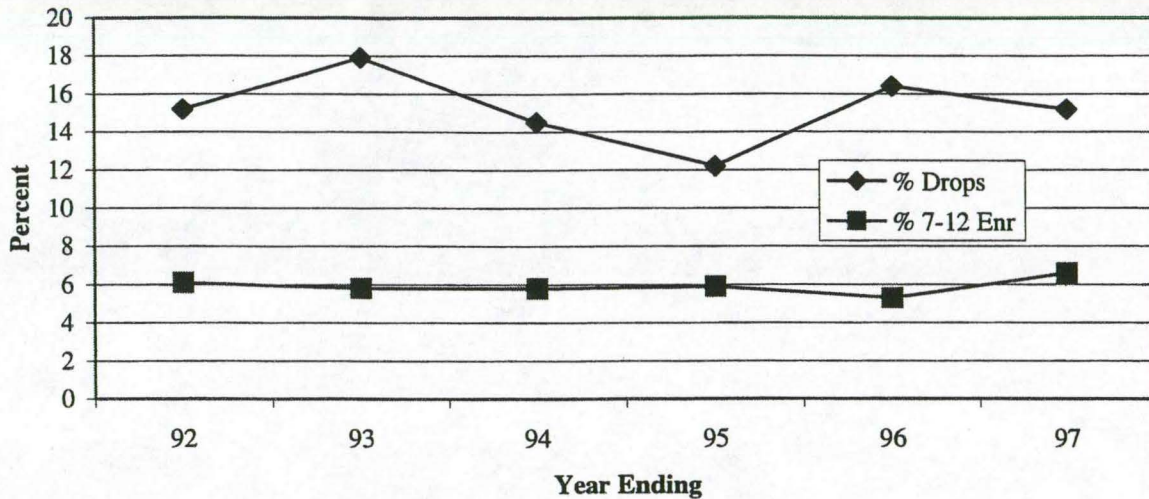
## CONTENTS

Iowa Public School 7-12 Dropout Rate .....	1
Percent of Iowa Public School Dropouts by Gender.....	1
Iowa Public School Minority Dropouts as a Percent of Total Dropouts Compared to the Percent of Minority 7-12 Enrollment.....	2
Iowa Public School African American Dropouts as Percent of Total Dropouts Compared to the Percent of African American 7-12 Enrollment .....	2
Percentage of Iowa Public School Students Intending to Pursue Postsecondary Education/Training .....	3
Percentage of Iowa Public School Students Intending to Pursue Postsecondary Education/Training by Gender .....	3
Percent of Iowa Students Scoring At or Above the Proficiency Level in Reading as Measured by ITBS and ITED over the Biennium Periods 1993-95 to 1996-98.....	4
Percent of Iowa Students Scoring At or Above the Proficiency Level in Mathematics as Measured by ITBS and ITED over the Biennium Periods 1993-95 to 1996-98.....	4
Percent of Iowa Students At or Above the Proficiency Level in Reading as Measured by ITBS and ITED by Gender 1997-98.....	5
Percent of Iowa Students At or Above the Proficiency Level in Mathematics as Measured by ITBS and ITED by Gender 1997-98.....	5
Average ACT Composite Scores – Iowa and the Nation .....	6
Iowa Average ACT Composite Scores by Gender .....	6
Percentage of Iowa ACT Composite Scores Equal to or Less than 15 and Equal to or Greater than 25 .....	7
Percentage of Iowa ACT Test-takers Completing Core Curriculum .....	7
Average Advanced Placement Exam Scores – All Candidates .....	8
Number of Advanced Placement Exams Taken by Iowa Students .....	8
Advanced Placement Exam Score Distribution – 1998.....	9

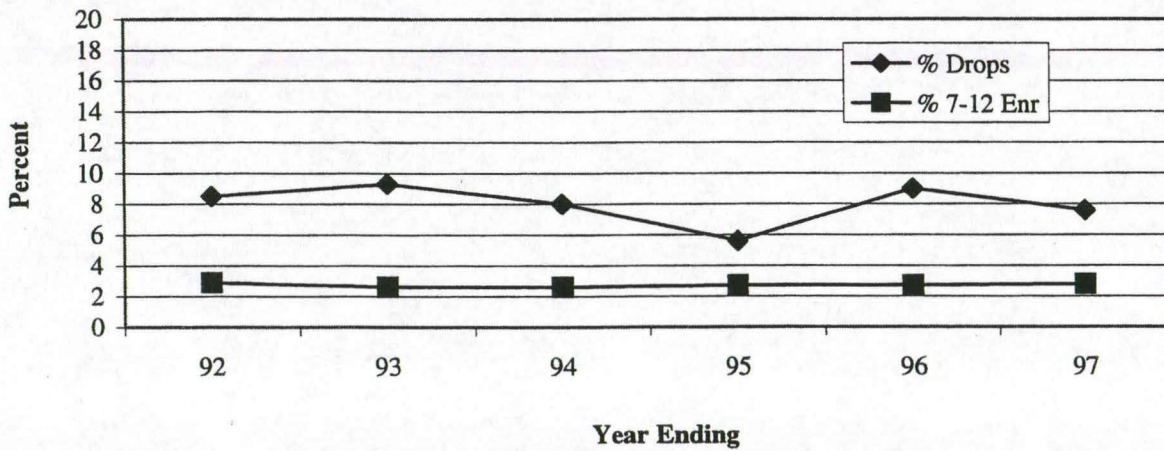


The Strategic Plan for Educational Excellence in the 21st Century, Strategy 11  
 Education System Goal: To improve the level of learning, achievement and performance of all students so they will become successful members of their community and the work force  
**The percentage of students considered as dropouts for grades 7-12 by gender, race, and students with disabilities.**

**Iowa Public School Minority Dropouts as a Percent of Total Dropouts Compared to the Percent of Minority 7-12 Enrollment**

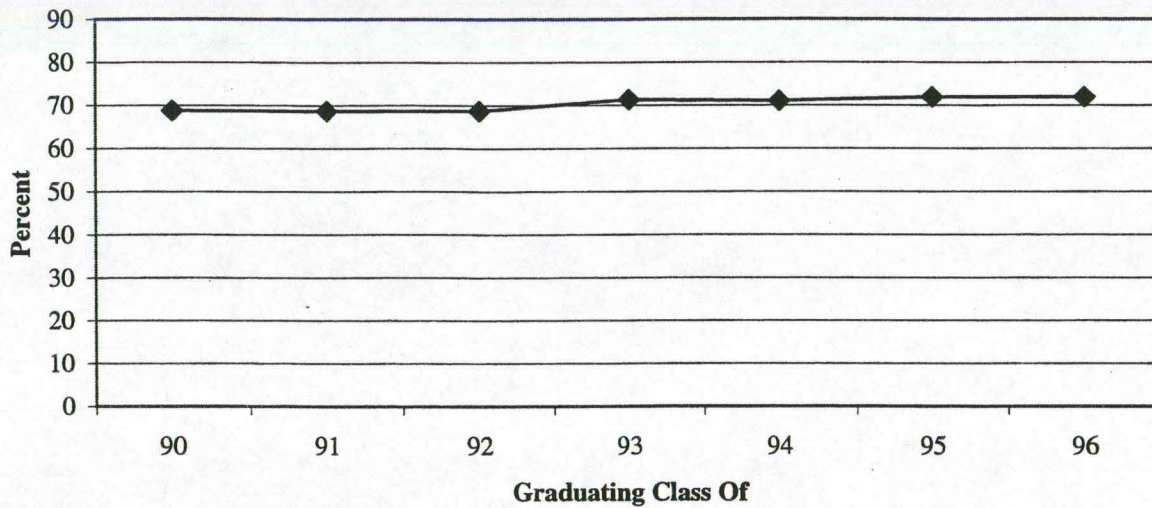


**Iowa Public School African American Dropouts as a Percent of Total Dropouts Compared to the Percent of African American 7-12 Enrollment**

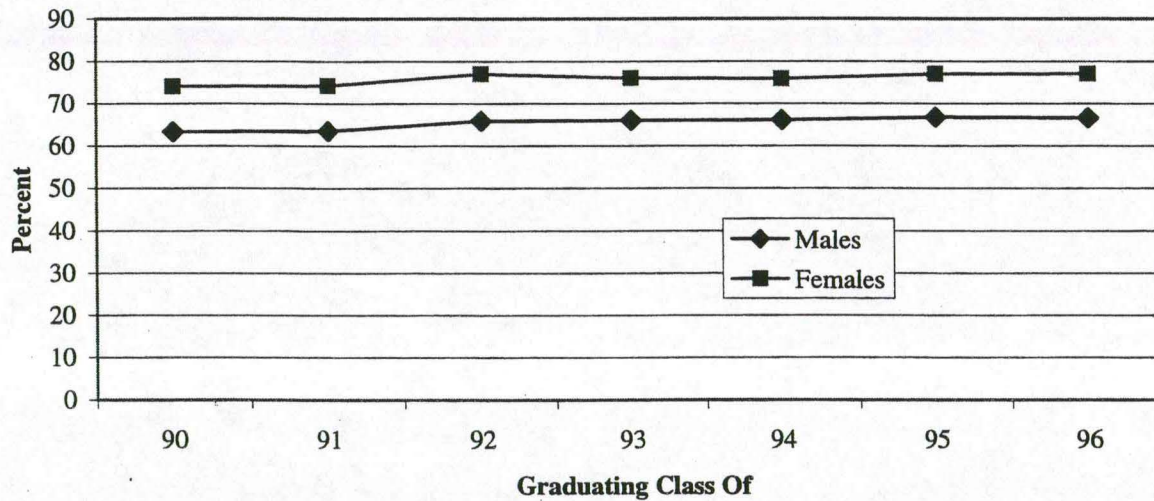


The Strategic Plan for Educational Excellence in the 21st Century, Strategy 11  
 Education System Goal: To improve the level of learning, achievement and performance of all students so they will become successful members of their community and the work force  
**The percentage of students considered as dropouts for grades 7-12 by gender, race, and students with disabilities.**

**Percentage of Iowa Public School Students Intending to Pursue Postsecondary Education/Training**

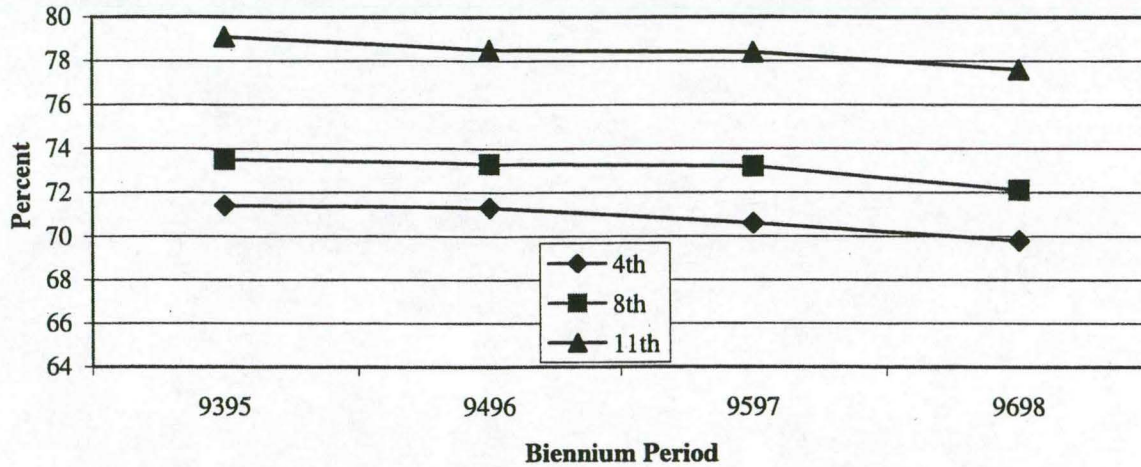


**Percentage of Iowa Public School Students Intending to Pursue Postsecondary Education/Training by Gender**

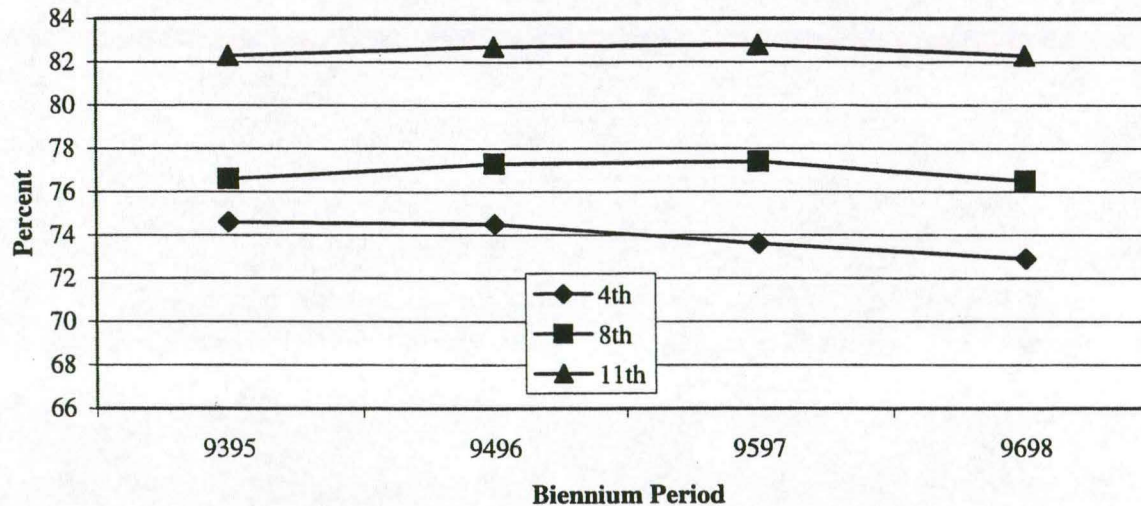


The Strategic Plan for Educational Excellence in the 21st Century, Strategy 11  
 Education System Goal: To improve the level of learning, achievement and performance of all students so they will become successful members of their community and the work force  
**The percentage of high school seniors who intend to pursue postsecondary education/training.**

**Percent of Iowa Students Scoring At or Above the Proficiency Level in Reading as Measured by ITBS and ITED over the Biennium Periods 1993-95 to 1996-98**

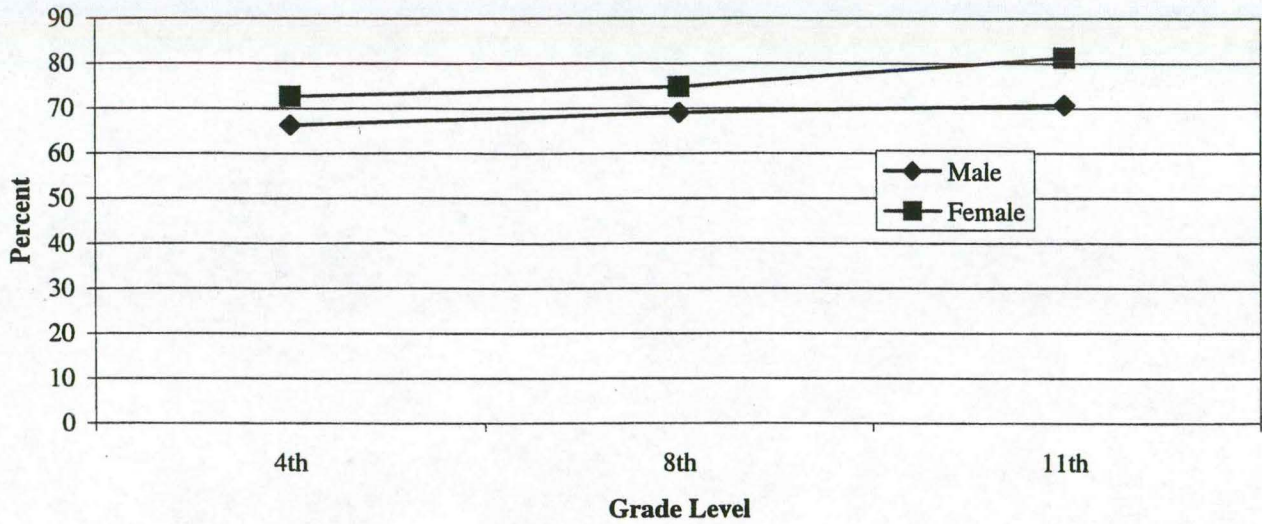


**Percent of Iowa Students Scoring At or Above the Proficiency Level in Mathematics as Measured by ITBS and ITED over the Biennium Periods 1993-95 to 1996-98**

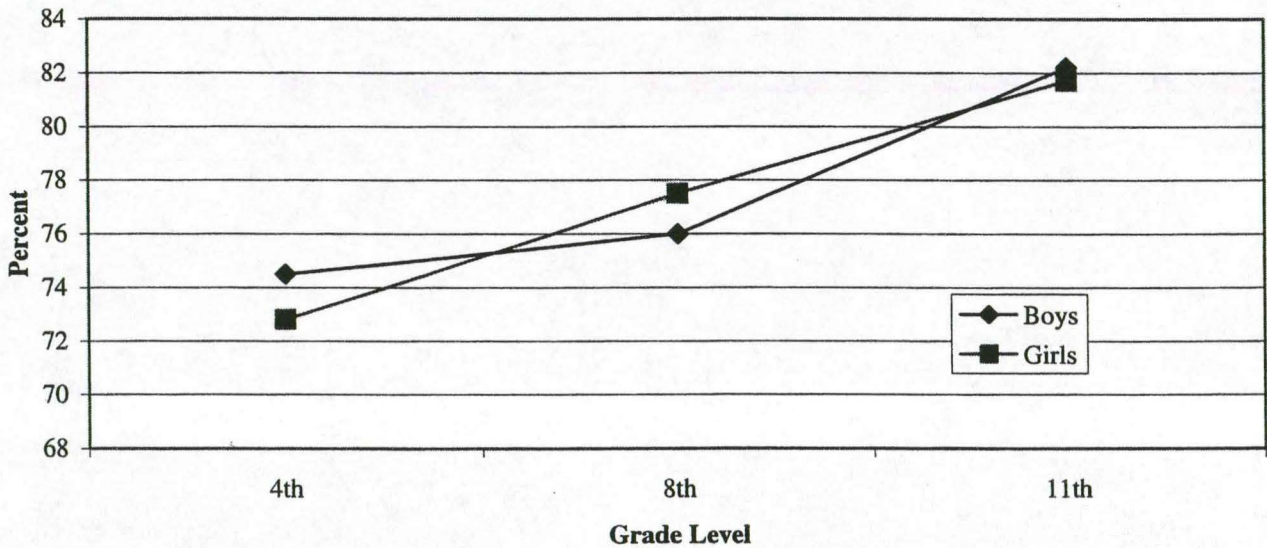


The Strategic Plan for Educational Excellence in the 21st Century, Strategy 11  
 Education System Goal: To improve the level of learning, achievement and performance of all students so they will become successful members of their community and the work force  
**The percentage of all 4th, 8th and 11th grade students achieving proficient or higher reading and mathematics status**

**Percent of Iowa Students At or Above the Proficiency Level in Reading as Measured by ITBS and ITED by Gender 1997-98**



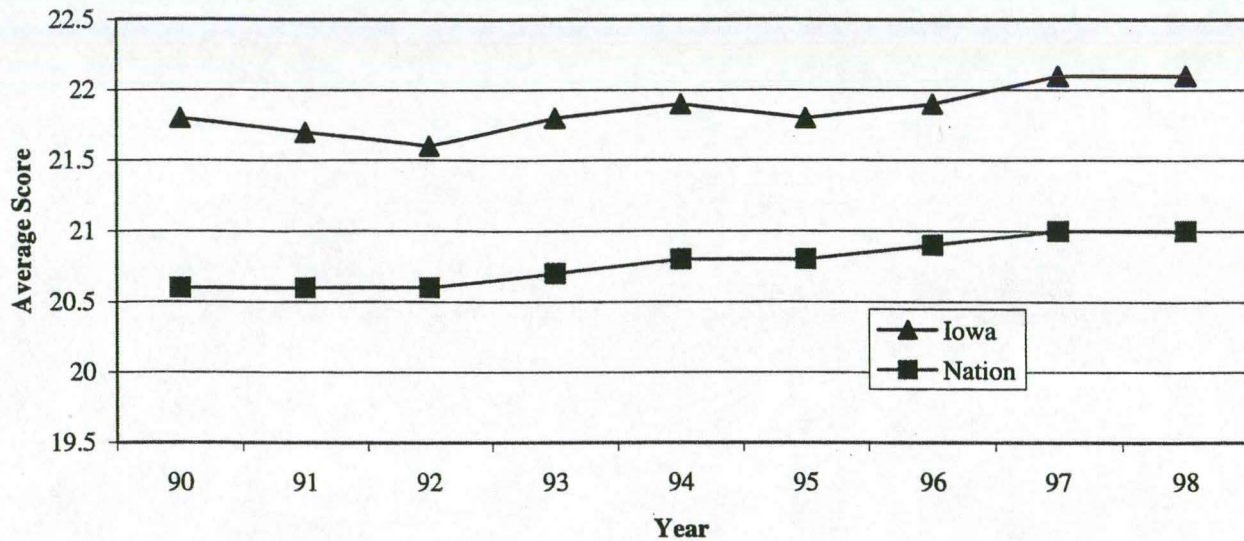
**Percent of Iowa Students At or Above the Proficiency Level in Mathematics as Measured by ITBS and ITED by Gender 1997-98**



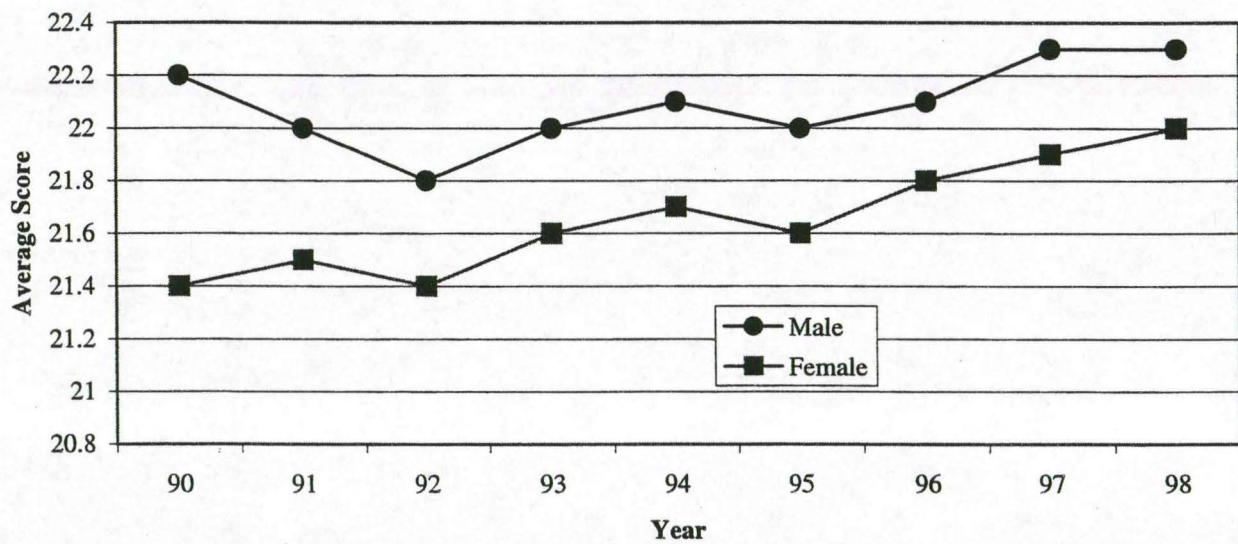
The Strategic Plan for Educational Excellence in the 21st Century, Strategy 11  
 Education System Goal: To improve the level of learning, achievement and performance of all students so they will become successful members of their community and the work force  
**The percentage of all 4th, 8th and 11th grade students achieving proficient or higher reading and mathematics status**



**Average ACT Composite Scores - Iowa and the Nation**

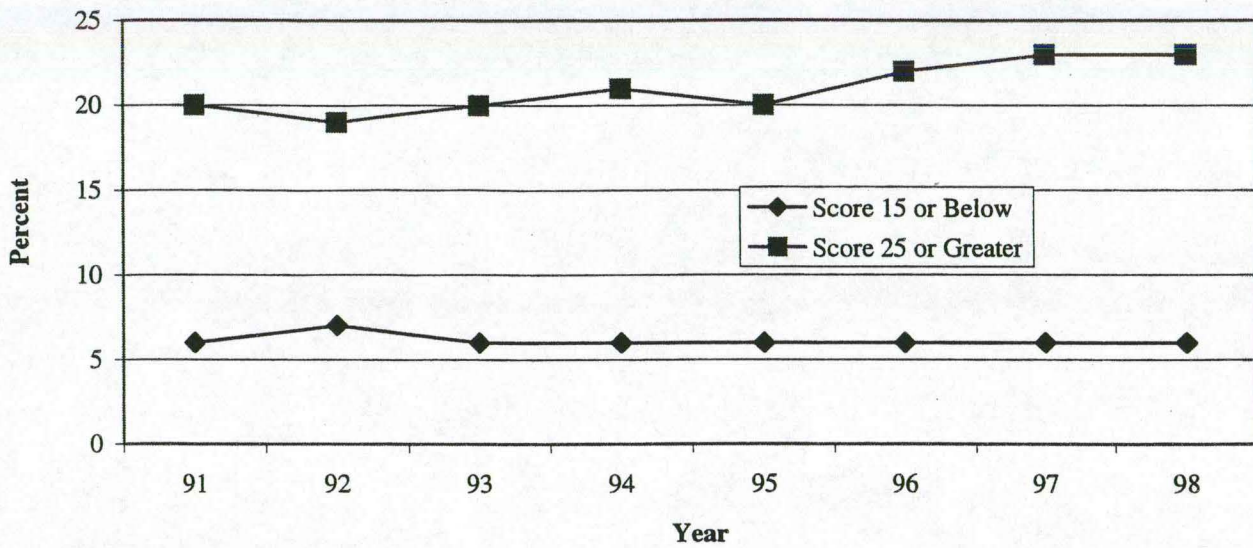


**Iowa Average ACT Composite Scores by Gender**

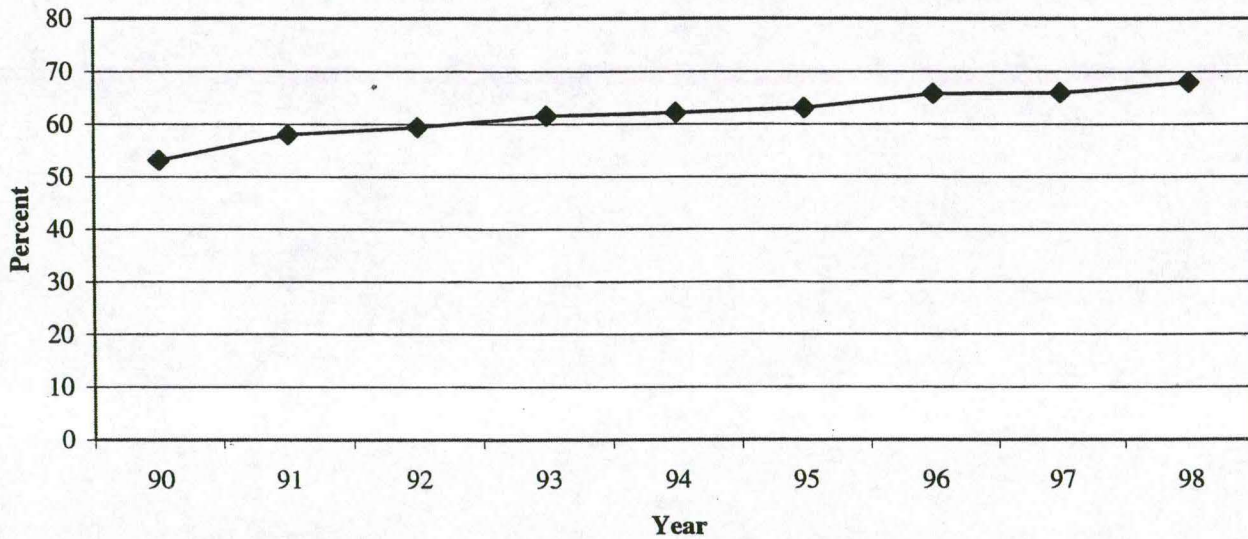


The Strategic Plan for Educational Excellence in the 21st Century, Strategy 11  
 Education System Goal: To improve the level of learning, achievement and performance of all students so they will become successful members of their community and the work force  
**The percentage of high school student achieving a score or status on a measure indicating probable postsecondary success**

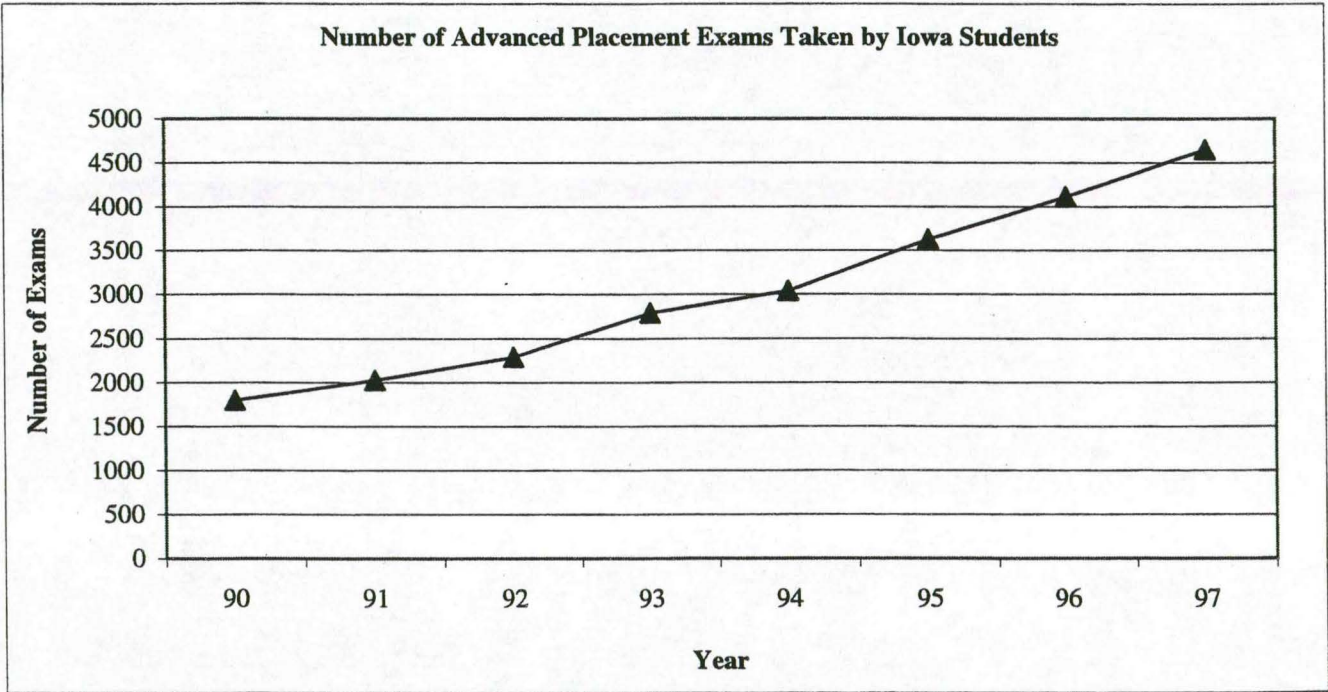
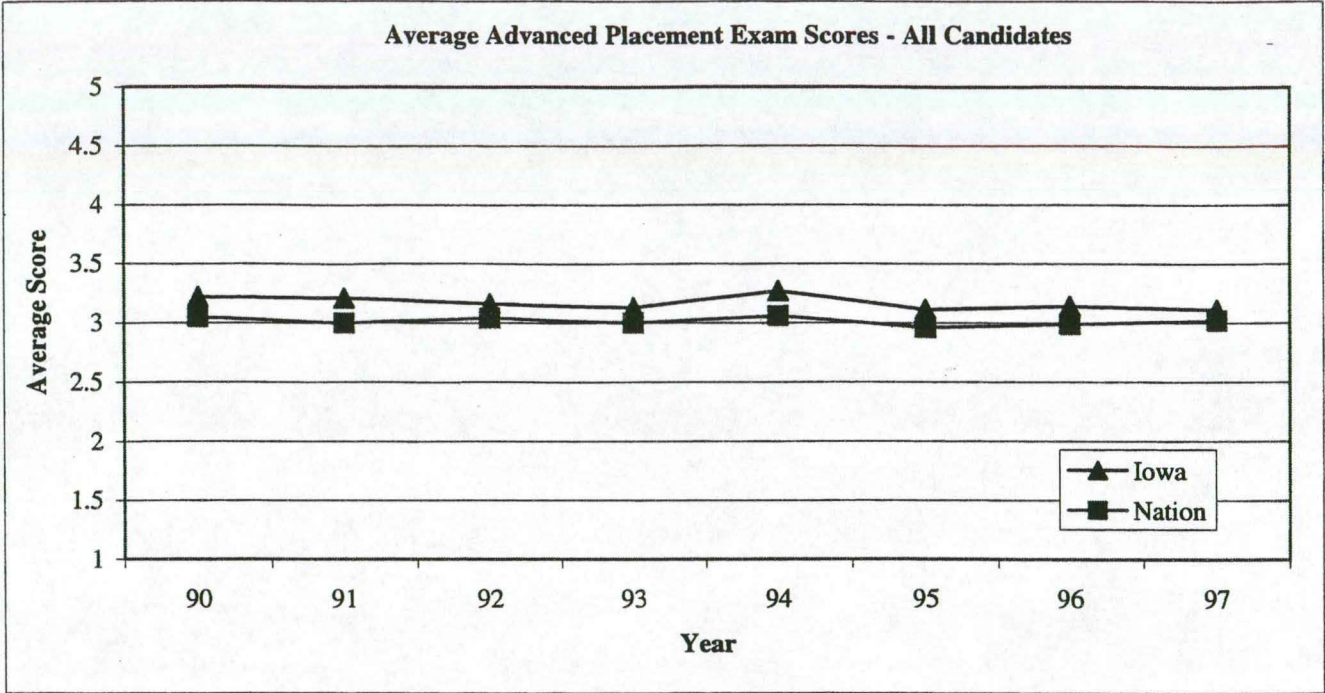
Percentage of Iowa ACT Composite Scores Equal to or Less than 15  
and Equal to or Greater than 25



Percentage of Iowa ACT Test-takers Completing Core Curriculum



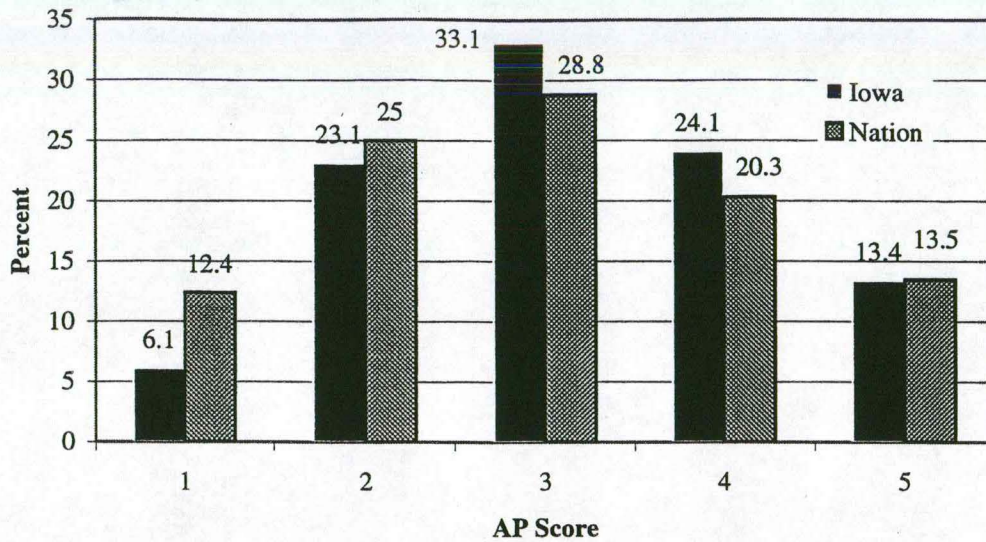
The Strategic Plan for Educational Excellence in the 21st Century, Strategy 11  
 Education System Goal: To improve the level of learning, achievement and performance of all students so they will become successful members of their community and the work force  
**The percentage of high school student achieving a score or status on a measure indicating probable postsecondary success**



The Strategic Plan for Educational Excellence in the 21st Century, Strategy 11  
 Education System Goal: To improve the level of learning, achievement and performance of all students so they will become successful members of their community and the work force  
**The percentage of high school student achieving a score or status on a measure indicating probable postsecondary success**

State Library of Iowa  
Des Moines, Iowa

### Advanced Placement Exam Score Distribution - 1998



**AP Score Description:** 1 (carries no recommendation) 2 (possibly qualified)  
3 (qualified) 4 (well qualified) 5 (extremely well qualified)

The Strategic Plan for Educational Excellence in the 21st Century, Strategy 11  
Education System Goal: To improve the level of learning, achievement and performance of all students so they will become successful members of their community and the work force  
**The percentage of high school student achieving a score or status on a measure indicating probable postsecondary success.**

STATE LIBRARY OF IOWA



3 1723 02102 1936