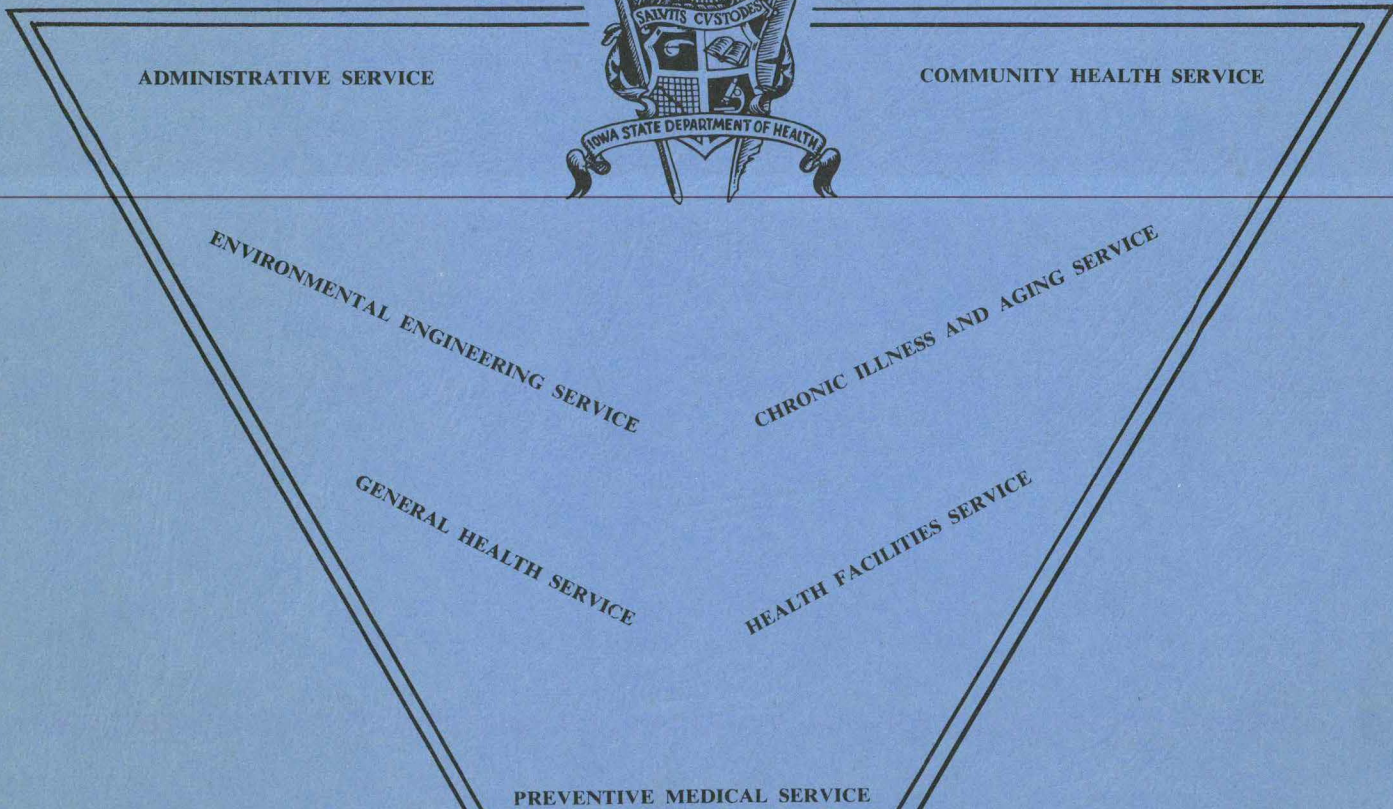


RA  
64  
.165  
1970

RA  
64  
.165

# Iowa State Department of Health



LYON	OSCEDA	DICKINSON	WINNEBAGO	ALLAMAKEE
14,020	8,970	12,820	19,650	15,960
SIoux	O'BRIEN	CLAY	PAUL	WAP
26,420	18,990	17,990	14,400	1,450
PLYMOUTH	CHEROKEE	BUENA VISTA	POCAHONTAS	REMER
24,220	17,690	20,640	13,480	29,120
WOODBURY	IDA	SAC	CALHOUN	DI
105,650	9,410	16,240	15,880	47,000
MONROE	CRAWFORD	CARROLL	GREENE	BOL
13,040	19,540	24,300	13,290	25,000
HARRISON	SHELBY	AUDUBON	GUTHRIE	DALLAS
16,840	15,800	10,020	12,990	23,360
POTTAWATTAMIE	CASS	ADAIR	MADISON	WARREN
84,510	18,080	9,330	11,970	21,710
MILLS	MONTGOMERY	ADAMS	UNION	CLARKE
11,370	13,070	6,360	13,290	7,620
FREMONT	PAGE	TAYLOR	RINGGOLD	DECATUR
9,880	19,040	9,470	7,150	7,380
WINNEBAGO	WAP	JEFFERSON	HENRY	LEE
37,650	20,390	22,510	145,720	20,060
JASPER	POWESHIEK	IOWA	JOHNSON	CLINTON
34,730	18,140	16,590	59,310	20,890
MARION	MANASKA	KEOKUK	WASHINGTON	JACKSON
26,170	21,600	15,250	18,990	56,270
MANASKA	KEOKUK	WASHINGTON	LOUISA	SCOTT
21,600	15,250	18,990	10,680	126,010
JEFFERSON	HENRY	LEE	DES MOINES	MUSCATINE
14,890	17,590	44,860	57,120	34,680

Iowa

# State Department of Health

---

*An Explanation of the Health Department's  
Organization, Services and Activities*

*Special Bulletin  
Revised*

*Compiled by Information and Education Division*

*Donald O. Anderson, Director*

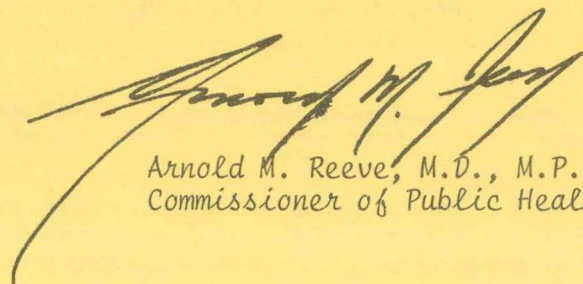
DES MOINES, IOWA

MAY, 1970

## **the Commissioner...**

The State Health Department administers Iowa's public health programs and activities. The successful accomplishment of this administration requires that the Department be organized and operated in the manner and with the methods best suited to the maximum utilization of available professional, technical and administrative skills and capabilities. Thus, neither the organization nor its functions can be completely static, but rather must be altered and modified from time to time as Iowa's needs and programs indicate and require.

This bulletin presents a general description and summary review of the current organization and functions of the Department. Its purpose is to present information and guidance for those interested and concerned, and to provide the background and basis for continuing evaluation of the organization, functional structure and procedures necessary for the accomplishment of the basic Departmental mission. This mission, briefly stated, is to bring to the citizens of Iowa successfully applied techniques and practices of public health knowledge for the prevention of disease and disability and the maintenance of physical and mental well-being and effectiveness throughout a prolonged life span.



Arnold M. Reeve, M.D., M.P.H.  
Commissioner of Public Health



*Arnold M. Reeve, M.D., M.P.H., Commissioner*

## **Chronic Illness and Aging Service**

*Elizabeth D. Procter, M.D., Chief*

## **Environmental Engineering Service**

*Paul J. Houser, M.S., Chief*

## **Health Facilities Service**

*F. W. Pickworth, B.S., Chief*

## **Administrative Service**

*K. E. Hartoft, B.A., Chief*

## **Preventive Medical Service**

*S. L. Hendricks, D.V.M., M.P.H., Acting Chief*

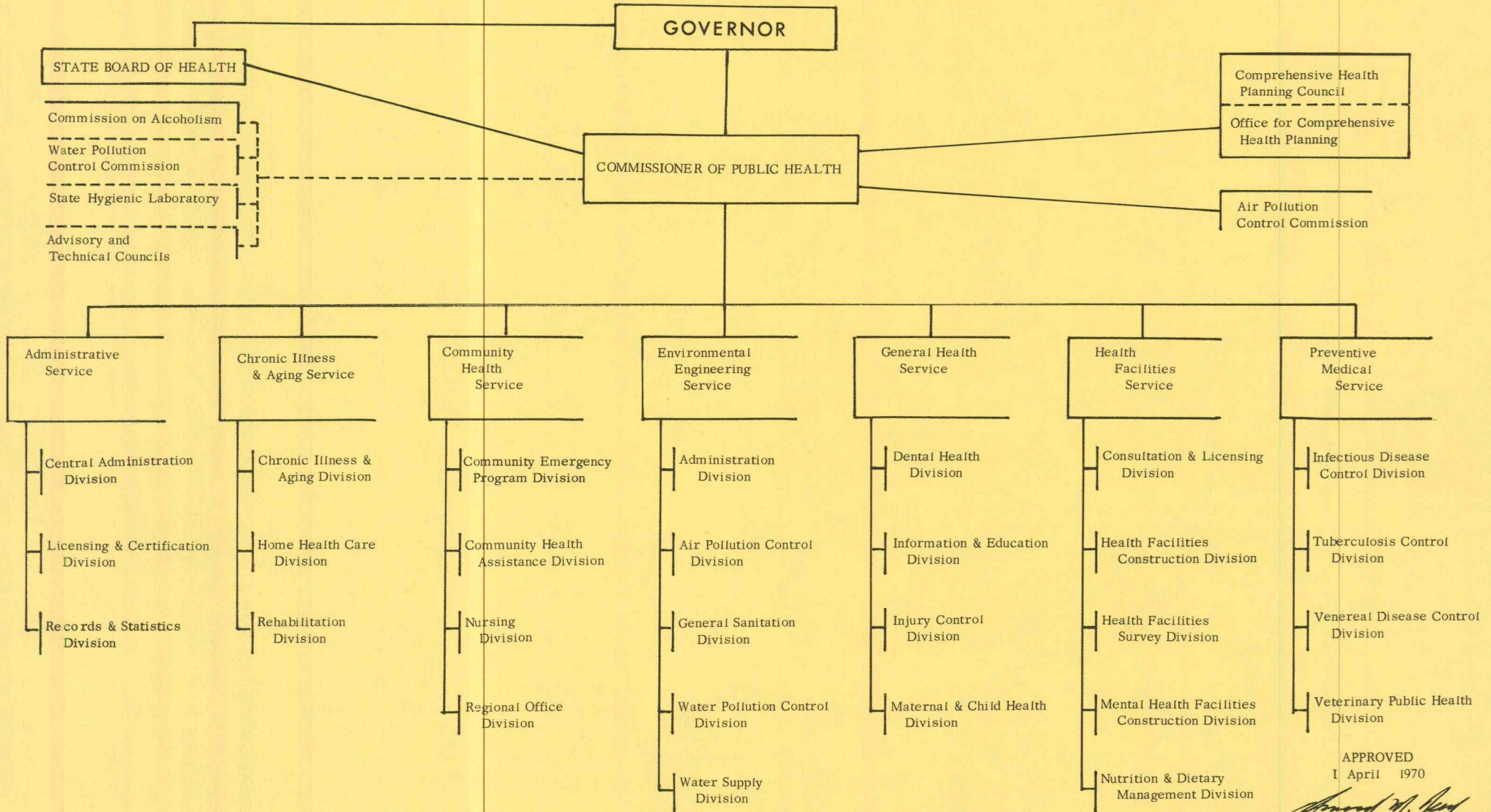
## **General Health Service**

*J. E. Goodrich, D.D.S., M.P.H., Chief*

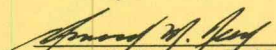
## **Community Health Service**

*Ronald D. Eckoff, M.D., M.P.H., Chief*

# IOWA STATE DEPARTMENT OF HEALTH ORGANIZATION CHART



APPROVED  
1 April 1970

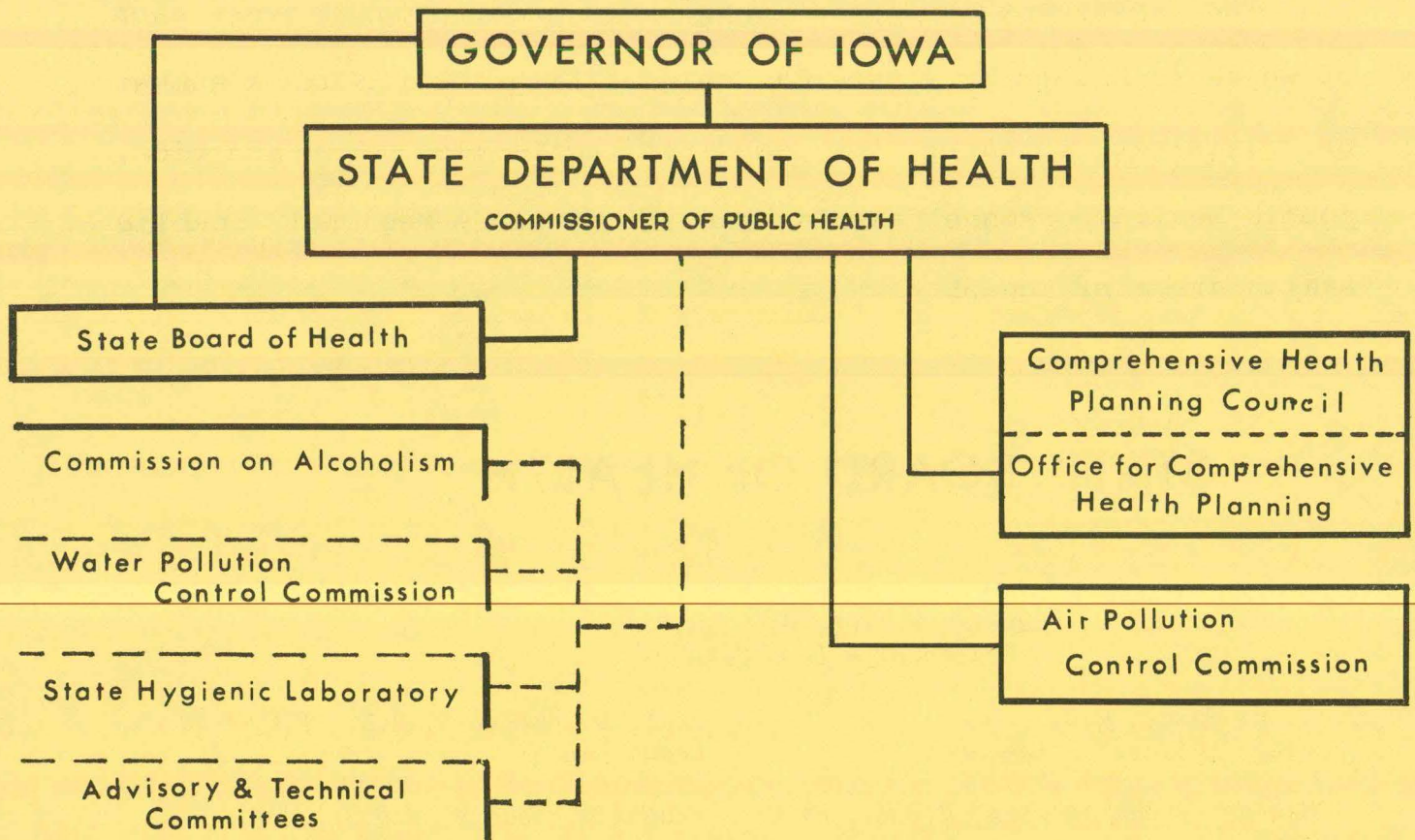
  
 Arnold M. Reeve, M.D., M.P.H.  
 Commissioner of Public Health

# Contents

STATE BOARD OF HEALTH	Page 6
COMMISSION ON ALCOHOLISM	7
AIR POLLUTION CONTROL COMMISSION	7
WATER POLLUTION CONTROL COMMISSION	8
OPERATOR CERTIFICATION BOARD (New)	9
STATE HYGIENIC LABORATORY	10
<hr/>	
TECHNICAL & ADVISORY COMMITTEES	10
OFFICE FOR COMPREHENSIVE PLANNING	11
<u>ADMINISTRATIVE SERVICE</u>	12
Central Administration Division	13
Licensing & Certification	14
Records & Statistics Division	14
<u>CHRONIC ILLNESS &amp; AGING SERVICE</u>	15
Chronic Illness & Aging Division	16
Home Health Care Division	18
Rehabilitation Division	19
<u>COMMUNITY HEALTH SERVICE</u>	20
Community Emergency Program Division	20
Community Health Assistance Division	21
Nursing Division	21
Regional Office Division	22
<u>ENVIRONMENTAL ENGINEERING SERVICE</u>	23
Administration Division	23
Air Pollution Control Division	24

ENVIRONMENTAL ENGINEERING SERVICE - Continued

General Sanitation Division	Page 24
Water Pollution Control Division	25
Water Supply Division	26
<u>GENERAL HEALTH SERVICE</u>	28
Dental Health Division	28
Information & Education Division	29
Injury Control Division	30
Maternal & Child Health Division	31
<u>HEALTH FACILITIES SERVICE</u>	33
Consultation and Licensing Division	33
Health Facilities Construction Division	34
Health Facilities Survey Division	35
Mental Health Facilities Construction Division	36
Nutrition & Dietary Management Division	37
<u>PREVENTIVE MEDICAL SERVICE</u>	38
Infectious Disease Control Division	38
Tuberculosis Control Division	39
Venereal Disease Control Division	40
Veterinary Public Health Division	41
DIRECTORY	42
REGIONAL OFFICES	43
INDEX	44



The Commissioner of Public Health must be a physician with special training in public health. He is appointed for a four-year term by the Governor of Iowa. He is head of the Iowa State Department of Health and is responsible to the Governor for the operation and activities of the Department in accordance with policies established by the State Board of Health.

The State Health Department exercises general supervision over public health, promotes health and sanitation practices, carries out specific responsibilities required by law, and administers State laws related to public health. Although the Department has many regulatory responsibilities, it is considered that its most important contributions and functions are educational and advisory in nature.



The Department is divided into seven broad program areas each of which is headed by a service chief. Each service has a number of divisions to carry out specific activities. In addition, public health personnel are located in the seven regional public health areas of the State.

## STATE BOARD OF HEALTH

*Franklin H. Top, M.D., M.P.H.  
President - Iowa City*

*E. E. Gamet, M.D.  
Vice-President - Lamoni*

*Chas. D. Mullinex, M.S., P.E.  
Cedar Rapids*

*George C. Christensen, D.V.M., Ph.D.  
Ames*

*Albert J. Soucek, D.D.S., M.P.H.  
Iowa City*

*Paul J. Leehey, M.D.  
Independence*

*G. A. Whetstine, D.O.  
Wilton Junction*

*Mrs. Meridean Maas, R.N.  
Liscomb*

*Harry C. Rasdal, O.D.  
Spencer*

The Iowa State Board of Health is a policy-making body for the State Department of Health. The nine members appointed by the Governor of Iowa are from medical or other health-related professions. The Commissioner of Public Health serves as secretary to the Board. It is the function of the Board to establish policies for the guidance of the Commissioner of Public Health in the discharge of his duties and for the overall performance of the activities of the State Department of Health.

The Board also considers and recommends new legislation or changes in existing laws pertaining to public health. It is the duty of the Board to adopt, promulgate, amend and repeal rules and regulations of the Department consistent with the law for protection of public health.

## COMMISSION ON ALCOHOLISM

The Iowa Commission on Alcoholism was established within the State Department of Health in 1961 by the 59th General Assembly. The Commission has an independent budget but has offices in the Health Department and the Commissioner of Public Health is a Commission member. Functions of the Commission are to study alcoholism in all its aspects, with particular attention to treatment, prevention and education; promote meetings and programs on alcoholism; disseminate information for the guidance of individuals, courts, public and private agencies; recommend policies and rules governing acceptance, care and treatment of alcoholics; and contract for educational research.

## AIR POLLUTION CONTROL COMMISSION

The Air Pollution Control Commission was established within the State Department of Health by the 1967 Iowa Legislature to have general supervision over administration and enforcement of all laws in the state relating to air pollution. The Commission consists of the Commissioner of Public Health and eight

members with experience appropriate to the field of air pollution appointed by the Governor for four-year terms. These include a professional engineer, an industrial physician, a manager of a manufacturing firm, a representative of agriculture and conservation, a representative of labor, a representative of a government subdivision, and two members at large. Services of a technical secretary and staff are provided by the Environmental Engineering Service, Air Pollution Control Division. The purpose of the Commission, through the Department, is to maintain purity of the air resources of the state consistent with the protection of the health and physical property of the state, maximum employment, and the full industrial development of the state and to stimulate the development of local air pollution control programs.

## WATER POLLUTION CONTROL COMMISSION

The Water Pollution Control Commission was established by the 1965 Iowa Legislature as an agency of the State government to prevent, abate and control the pollution of the State's waters. The Commission's eleven-member board, appointed by the Governor of Iowa for six-year terms, includes the Commissioner of the State Department of Health; the Secretary of Agriculture or his designee; the Director of the Iowa Natural Resources Council; the Director of the State Conservation Commission; the Director of the State Soil Conservation Committee; a member from the staff of one of the State's universities or colleges

who has technical background, training and knowledge in the field of water pollution; and five from the State to represent industry, municipal government, farm owners and the public at large. Services of a technical secretary and staff are provided by the Environmental Engineering Service, Water Pollution Control Division. The purpose of the Commission is to protect, maintain and improve water quality for the protection of public health and such legitimate uses as domestic, recreation, agriculture and industry.

## OPERATOR CERTIFICATION BOARD

The water supply system and wastewater treatment plant Operator Certification Board was established by law in 1965. The purpose of the certification law is to protect the public health and the water resources of the state to the extent of requiring a qualified operator to be in charge of each public water supply and municipal wastewater treatment plant.

The members of the Board are one water operator and one wastewater operator who have been issued certificates of the highest classification, a university faculty member, an employe of a municipality required to employ a certified operator, and a staff member of the Environmental Engineering Service who also serves as secretary of the board.

# STATE HYGIENIC LABORATORY

Although the State Hygienic Laboratory is not an integral part of the Iowa State Department of Health, it does provide laboratory services for the Department and a close working relationship exists between Department and Laboratory personnel. Headquarters for the Laboratory are located on the University of Iowa Campus in Iowa City, with branch laboratories in Des Moines and Sioux City.

The Laboratory provides diagnostic services to the medical, dental and veterinary professions and aids in the diagnosis and control of communicable diseases. The Laboratory also does extensive research and provides service on public health problems, especially in the areas of environmental sanitation, radiation, pesticide control, occupational health and clinical laboratory evaluation and consultation.

## ADVISORY & TECHNICAL COMMITTEES

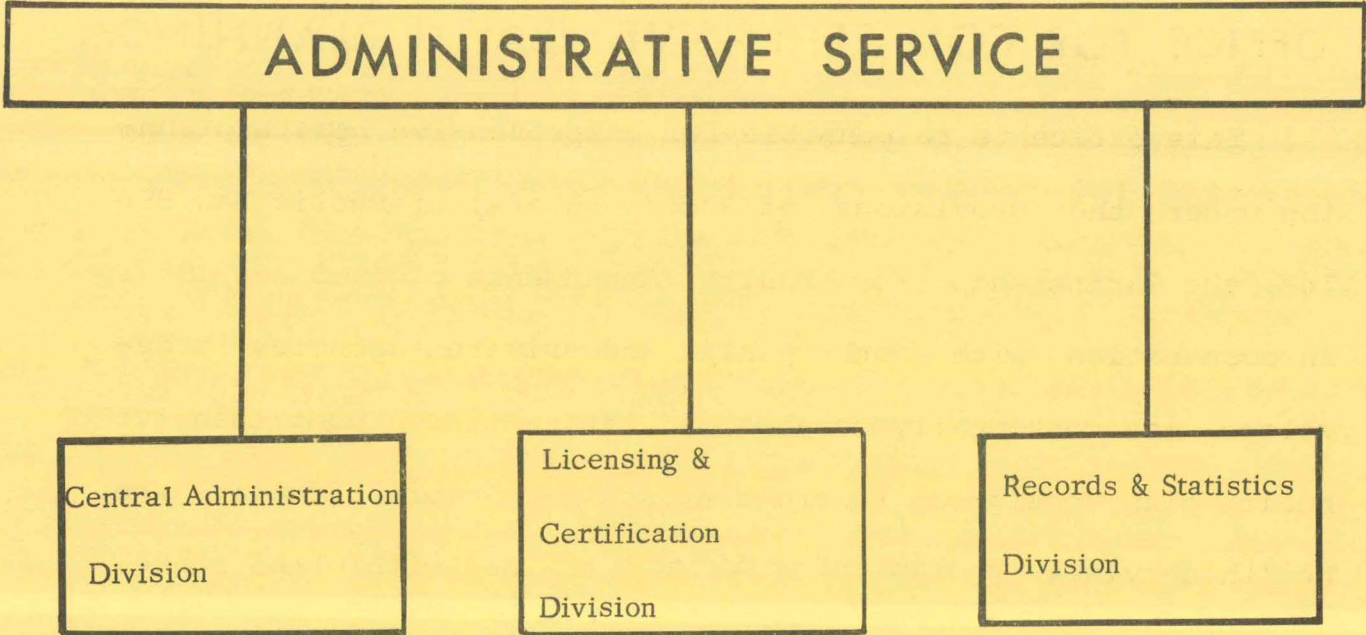
A number of advisory and technical committees assist the Health Department by focusing the knowledge and experience of other disciplines on a public health problem or activity. These committees generally consist of representatives from other State agencies, official and voluntary health agencies, educational institutions, the medical professions and institutions, and the general public. Several of these committees are official and have specific activities. Others are non-official and meet to discuss health-related problems or coordinate a health program.

## OFFICE FOR COMPREHENSIVE HEALTH PLANNING

This office is responsible for comprehensive health planning under the provisions of Section 314(a) of Public Law 89-749, the Partnership for Health Amendments of 1966 and 1967. In cooperation with both public and private agencies it develops and continually updates a state-wide comprehensive health plan designed to broaden and make more effective the health services, public and private, provided within the state.

The office also has the responsibility of encouraging and assisting in the development of areawide comprehensive health planning programs within the state, and to review and approve applications for federal funds for such planning activities. In an effort to develop cooperation and coordination between the various segments of the total health field in the state, and to assure compliance with the State Comprehensive Health Plan as developed, the office also reviews and comments on other project proposals when submitted as grant applications for federal matching funds.

The office consults with and is advised by the Comprehensive Health Planning Council, which is an advisory body composed of health professionals and consumers of health services.



### Services:

The Administrative Service provides administration, business, fiscal, personnel, training and legal services to the Health Department. Administrative and clerical services are furnished for a number of State licensing boards. Iowa's vital records and statistical data are registered and compiled within a division of this service.

## Central Administration Division

The Finance Section of this Division is responsible for the preparation and submission of budgets, appropriation requests, expenditure reports, requests for funds; planning and maintenance of accounts ledgers, etc.; and preparation of necessary quarterly and annual fiscal reports.

The Personnel Section is responsible for the selection, placement, and training of the Department's employees. It maintains the necessary personnel records and processes all payroll and personnel forms required by the State Comptroller, State Personnel Director and the State Executive Council. This Division also provides such general services as purchasing and maintaining supplies, mail and freight service, supply and literature storage, and mimeograph and addressograph services.

The Planning and Coordination Section is responsible for planning and coordination within the Department, for liaison with and assistance to the Office of Comprehensive Health Planning, and for coordination with other State departments, commissions and boards.

The Legal Section provides services relating to health administration and enforcement of health laws to the State Board of Health, the State Health Department, and to local health departments and boards of health. Duties include drafting of rules and regulations, preparation of health-related legislation, conducting administrative hearings, and coordination with the State Attorney General.



## Licensing & Certification Division

This Division coordinates the activities of a number of State licensing boards of examiners and provides administrative and clerical services. These services consist of receipt of applications and fees for examinations; processing of credentials; certification of grades and affidavits of licensure; and the maintenance of permanent records of all professional licensees along with the issuance or renewal application and receipt of monies. The Division provides these services for the following professions: barbering, cosmetology, dentistry, optometry, funeral director and embalmer, podiatry, and physical therapy. It also administers the certification of wastewater and water treatment plant operators and mobile home parks. Licenses are issued to medical and osteopathic physicians and chiropractors, although the actual processing of applications, etc., is done by the respective boards of examiners.

In addition to licensing, two sections carry on administrative activities and inspections of cosmetology schools, beauty salons, barber shops and barber schools.

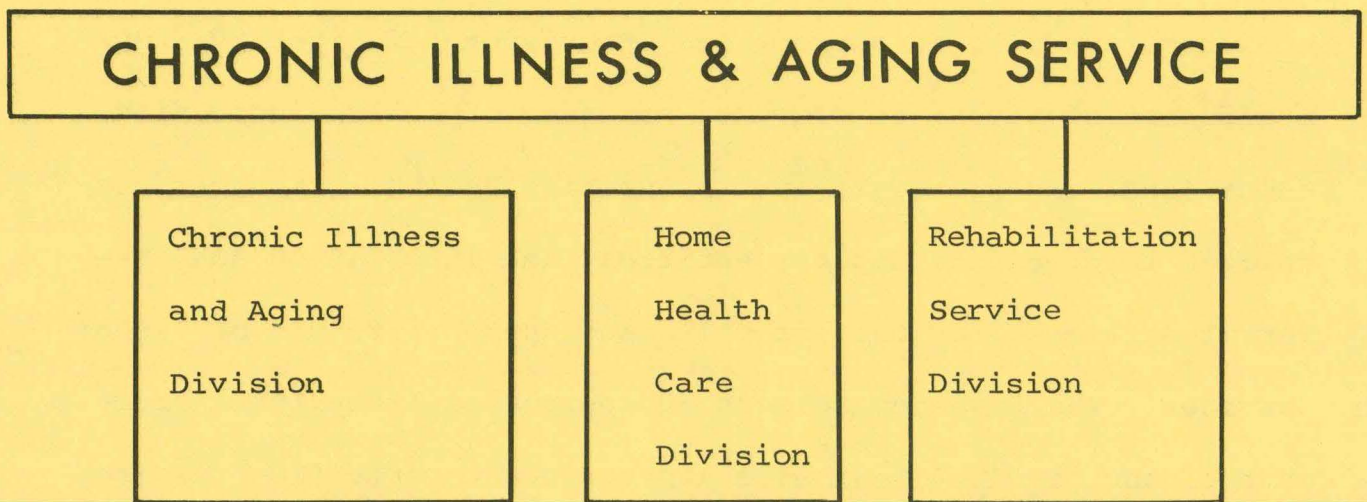
## Records & Statistics Division

The Records and Statistics Division is the central registration agency for records of all births, deaths, fetal deaths, marriages and divorces in Iowa. The Division receives these records from local registrars and clerks of court; processes them and compiles statistical data. A major function of this

Division is to answer requests for certified copies of records.

Since vital records have statistical as well as legal value, they are tabulated and analyzed. These statistics are a basic necessity providing quantitative evaluation of problems, progress, or failures in public health. They are also used to answer requests from the public for statistical information. For example, population estimates for all counties and cities of over 10,000 population as well as the State are made each year.

The Division also provides a number of services to the other divisions of the Health Department including statistical consultation and data processing, and has responsibility for administering the statutes relating to transportation, interment and other disposition of dead bodies, including allocation of bodies for scientific purposes.



## Services:

The purpose of the Chronic Illness and Aging Service is to prevent or to reduce disability and deaths resulting from diseases of long-term development and the concomitant contributions of the aging process. The Service promotes initiation of and supports with professional consultation community programs directed toward prevention, detection, patient care habilitation and rehabilitation, professional and public education, and applied research in fulfillment of this purpose.

### Chronic Illness & Aging Division

Twelve and six-tenths percent of Iowa's population are persons whose ages are over 65 years. Chronic diseases, manifested most frequently in later life, are compounded by economic and social environmental factors affecting chiefly aged persons. It is toward this population group that efforts of the Division are directed.

The Division provides liaison and consultation and participates in the formation of community and governmental programs whose services are directed to this group. Communities are encouraged, by an appropriate provision of literature and staff participation, to provide programs of health screening, educational and clinical, and preventive health practices as related to specific disease entities, and information and referral services for the effective and appropriate use of such services. The Division selects and purchases literature, brochures, and audio-visual aids appropriate to specific disease entities for distribution to and use by lay and professional groups.

Division staff members participate in public and private interagency activities directed toward chronic illness and aging programs by liaison and advisory group participation in such groups as the Interagency Council on Smoking and Health, Stroke Advisory Committee of Regional Medical Program State Council for Homemaker Services, and Iowa Diabetes Association, Inc.

Two program areas are considered preventive:

Smoking and Health activity in the schools has been continuous since March 1967. A laryngect has been addressing nearly 50,000 children each school year to bring them information about cigarette smoking. It is anticipated that withdrawal clinics will be started and that upon request clinics sponsored by other groups will be supported to the maximum degree possible.

Physical Exercise in Prevention of Coronary Heart Disease is a program which operates in cooperation with other agencies which have an interest in this field: YMCA, Iowa Heart Association, Iowa Department of Public Instruction. The purpose is to stimulate participation in physical exercise by adults. There is also a component of education concerning the relationship of exercise, nutrition and smoking to coronary heart disease.

## Home Health Care Division

This Division provides consultation and liaison services to communities and interagency groups in the organization and operation of community programs of ancillary services supportive to medical care services in the home. These programs include Homemaker/Health Aide services; mobile meals for the ill, aged and disabled; transportation services for homebound medical patients; handyman; friendly visitation and others.

Homemaker/Health Aide Service, which provides trained and supervised personnel to extend professional services into the home, prevents institutionalization or at other times permits early release from institutions of ill, handicapped, aged and socially disabled individuals. Thus limited health facility resources are kept available for those who may obtain maximum benefit from them.

The Division provides appropriate literature, brochures and audio-visual aids for distribution to lay and professional groups for promotion, organization and operation of these ancillary services.

Fiscal support of these services is for the most part limited to Homemaker/Health Aide Service programs and is derived from Home Health and Related Services Grants available to communities on a competitive basis for in-home health services.

Statistical services regarding Homemaker/Health Aide Programs are provided for the State Council for Homemaker Services by this Division.

## Rehabilitation Division

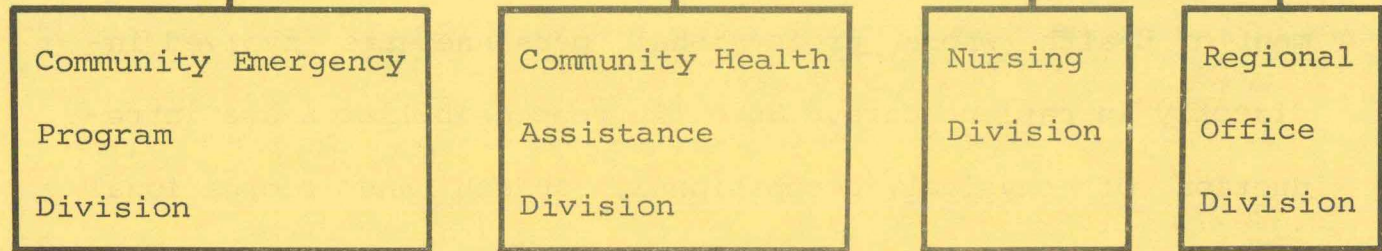
Staff members of this Division coordinate rehabilitation-related activities of the several Services within the Department of Health whose professional personnel are involved indirectly in patient care. Specific responsibilities are introduction of physical, occupational, speech and recreational therapy principles into consultation and educational activities directed toward the community facilities and agencies giving direct personal care services.

Direct application of the therapeutic principles of these health-related disciplines is provided by participation in training of personnel employed by community facilities and agencies upon request.

A liaison function of relating these professional disciplines to community facilities and agencies in need of such services is accomplished by maintenance of directories of professional service personnel within the state.

Consultation services are supplied to community facilities regarding space requirements, equipment, equipment sources and administrative arrangements in the initiation of rehabilitative services related to these several disciplines.

# COMMUNITY HEALTH SERVICE



## Services:

The Community Health Service promotes and supports adequate and effective health services on the local level. The Service assists communities to develop health services through providing technical advice and consultation and financial assistance or direct services through the regional offices. Regional offices throughout the state guide and coordinate the activities of public health nurses, engineers and sanitarians in the various communities and counties which have these services. The Service also administers the home health service aspect of the Federal Health Insurance Benefits program.

### Community Emergency Program Division

The over-all mission of the Community Emergency Program Division, of both Federal and State, is to reduce morbidity and mortality by improving the organization and delivery of emergency health and medical services.

The long-range goals of the Community Emergency Program Division are to achieve: readiness of government to support, direct and coordinate emergency services and mobilize and manage civilian resources during emergencies; readiness of facilities for emergency health and medical services; emergency re-

serve medical supplies and equipment; individual readiness of professional health and allied supporting manpower trained in emergency skills for emergency duties; training of one member of every family in Medical Self-Help procedures.

## Community Health Assistance Division

Each county in the state has a board of health. A number of cities with a population over 25,000 have city boards of health. The Community Health Assistance Division provides advice and guidance concerning local public health organization, responsibilities, and programs to the local boards of health and to other community officials, agencies and groups. The Division also provides liaison services between the local boards of health and the State Department of Health.

## Nursing Division

The Division of Nursing has as its purpose the organization and development of high quality public health nursing service on state and local levels to promote and maintain health, prevent disease and disability, and care for and assist in the rehabilitation of the sick and disabled.

The Division is responsible for the recruitment and guidance of public health nurses employed solely or jointly by the Health Department. Public health nursing practices and programs are evaluated and new priorities established to meet the changing needs of the people of Iowa. Another function is the interpretation of public health nursing to the public in an



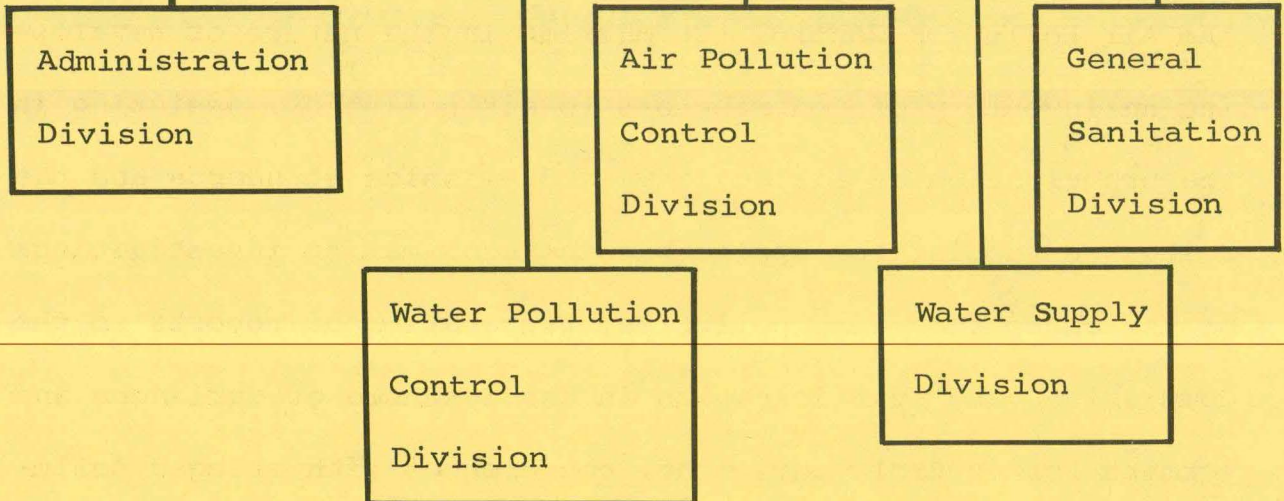
effort to promote the extension of nursing services to local communities.

## Regional Office Division

Health Department regional offices are located in Manchester, Fort Dodge, Mason City, Spencer, Council Bluffs, Des Moines, and Washington. Public health nurses, engineers, and sanitarians in the regional offices act as consultants on local health problems, supervise the activities of local public health personnel, and give limited direct services in communities which do not provide any public health services.

The engineers and sanitarians also act as the field staff for many of the activities of the Environmental Engineering Service such as those in air pollution control, water pollution control, water supply, mobile home parks, etc.

# ENVIRONMENTAL ENGINEERING SERVICE



## Services:

The purpose of the Environmental Service is to assure, insofar as possible, that Iowans enjoy a clean and healthy environment. The numerous powers and duties delegated to the State Health Department in this area require the administration of a broad program in environmental sanitation. With some exceptions and limitations, this program includes the sanitary control of water supplies, water pollution, waste disposal, air pollution, milk supplies, swimming pools, housing, and ionizing radiation.

### Administration Division

This division is under the direct supervision of the Chief of Service. Personnel provide stenographical and clerical service to the other divisions. Assignments of extraordinary duties such as preparation of activity and planning reports, liaison with the regional office personnel, participation in various general health protection activities, cooperation with other state and federal agencies, coordination of division activities, and preparation of budgets are also functions of

this division.

## Air Pollution Control Division

The staff of this Division provides technical services to the Air Pollution Control Commission in the nature of developing an inventory of contributors to air pollution, assisting in the promulgation of air quality and emission standards and the rules and regulations applicable thereto, making investigations of the cause for air pollution, preparation of reports to the Commission and participation in the issuance of variances and permits for control equipment, conferences with alleged polluters, hearings and other enforcement procedures. It also provides technical and administrative advice to local agencies in the development and enforcement of air pollution control programs, cooperates with the Federal government agency in control of interstate pollution, and with the State Hygienic Laboratory in providing laboratory service to the Commission.

## General Sanitation Division

The major function of the General Sanitation Division is administration of a program for proper solid wastes disposal mainly garbage and other organic or chemical refuse. Existing disposal operations and sites for new operations are inspected and local officials are advised of proper methods. The division also enforces the law requiring inspections and licensing of existing mobile home parks when sanitation is satisfactory, and approval of plans for new parks. A new law, effective July

1, 1969, requires inspections of migrant labor camps and issuing of permits for operation of the camps when provisions of law are met or legal action when sanitation is not in compliance with the law.

Other responsibilities include annual surveys of all Grade A milk supplies with reports of compliance with sanitation requirements to the State Department of Agriculture and other state officials; inspection of sanitary conditions in child care homes with reports to the Department of Social Welfare for licensing; inspection of sanitary conditions in State owned parks and other recreation areas with reports to the State Conservation Commission; advisory and technical service to the State Plumbing Code Committee and local officials regarding plumbing installations; general supervision over administration of the State Housing Law; advice to local boards of health and residents of the State in procedures for enforcement of the nuisance laws; and inspection of sanitation in preparation of food served on interstate transportation carriers with reports to the U.S. Public Health Service.

## Water Pollution Control Division

This Division operates under the direction of the Water Pollution Control Commission through the Division Director, who is technical secretary of the Commission. It provides technical services in making investigations of waste water discharges and pollution control facilities, submits reports to the Com-

mission, confers with local officials and others responsible for such discharges and otherwise participates in enforcement procedures, reviews plans for pollution control facilities, and issues permits for the installation of such facilities in accordance with prescribed standards. It also certifies grants for financial assistance for construction of waste water treatment facilities under provisions of the Federal Water Quality law and state Water Pollution Control Commission policies.

## Water Supply Division

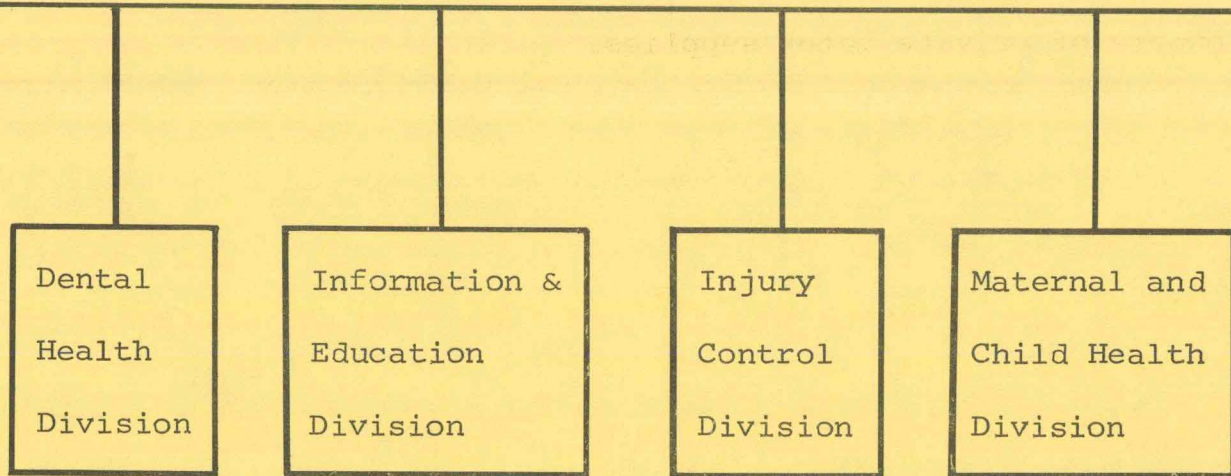
This Division is required by statute to make inspections of public water supplies and direct their method of installation and operation. The Division reviews and approves plans for new public water supplies or improvements to existing ones.

Routine surveillance of the safety of public water supplies is a major activity of the Division. All municipal water works are inspected for maintenance and operation in accordance with prescribed standards and local officials are required to submit water samples for bacteriological and chemical analysis. If laboratory reports indicate unsatisfactory quality, the cause is investigated and recommendations or orders are issued for correcting the condition.

Another function is to inspect public swimming pools and review plans for new construction. The Division also provides advisory service to federal and state agencies, local boards of

health having jurisdiction over non-public water supplies, and owners of private water supplies.

# GENERAL HEALTH SERVICE



## Services:

The General Health Service provides education and services in the areas of maternal and child health, dental health, injury control and general information and education in order to extend public knowledge for the prevention of disease and disability, the promotion of health and efficiency, and the extension of life's span.

### Dental Health Division

The Division of Dental Health plans, organizes and carries out activities designed to keep Iowa residents as free as possible from oral diseases. Preventive programs include fluoride, referral programs to encourage early detection and preventive treatment, and educational programs to promote good home oralhygenic practices and sensible eating habits.

A program known as The Iowa Plan of Dental Health Education, co-sponsored by the University of Iowa, is promoted in public and parochial schools. Dental health consultation, audio-visual materials and teaching aids are provided to assist nurses and teachers with school health programs. Through the use of dental referral cards, the Plan encourages annual den-

tal examinations and schools are able to report the number of children who receive complete dental care each year.

Cooperative community dental health projects and professional education programs are conducted with the College of Dentistry, University of Iowa, and the Council on Dental Health, Iowa Dental Association. Pilot study programs are carried on to demonstrate how dental services may be provided for specific population units and groups. Dental preventive treatment programs are conducted in the schools in rural areas and in small towns with fluoride deficient water supplies.

The Director serves as state dental consultant to the Bureau of Medical Services of the Department of Social Services. Technical assistance and consultation are also provided to other agencies of state and local government, to voluntary health organizations, professional organizations and individuals.

## Information & Education Division

The services of the Division of Information and Education extend to the Health Department's various divisions, and the Division serves as a liaison between the Department and the public so that reliable health information may be made available to Iowans. The Division also works in close cooperation with other official and voluntary agencies.

Information concerning personal, community and general



public health programs is disseminated through the news media, workshops, meetings, films, exhibits, and health literature. A film library is maintained for public use and a diverse supply of free health literature is available.

The Division also cooperates with School Health Education Workshops, sponsored by three Iowa universities during the summer, for teachers, school nurses and school administrators.

Included in the services to the Health Department are the editing of its publications; providing assistance to staff members in writing reports and health information materials; preparing exhibits and other visual aids; and maintaining audiovisual equipment.

## Injury Control Division

This Division promotes education in the control of accidental injuries.

The Injury Control Division serves as the focal point for planning and coordinating cooperative safety programs with other agencies and organizations. One program provides training for ambulance operators, policemen, firemen and other emergency personnel in emergency care of the sick and injured. Short courses are given throughout the state by physicians and others with knowledge and training in the latest developments and techniques in this area of health care.

Division personnel take part in the education and training programs of hospitals, nursing homes, local health departments, schools of nursing and other institutions. The Division also

provides consultation and information on the various aspects of injury control, accident prevention and safety education.

## Maternal & Child Health Division

The Maternal and Child Health Division provides services and educational programs to meet the health needs of Iowa mothers and children.

Among the programs sponsored or promoted in cooperation with local health agencies are child health conferences. Here children receive health supervision and physical examinations. The mother is counseled in relation to child rearing practices.

In cooperation with the University of Iowa College of Medicine, maternity clinics are operated in major population areas in the eastern sections of Iowa. Family planning programs are also provided in these same areas. Family planning programs are provided in other areas of the state in cooperation with Planned Parenthood of Iowa.

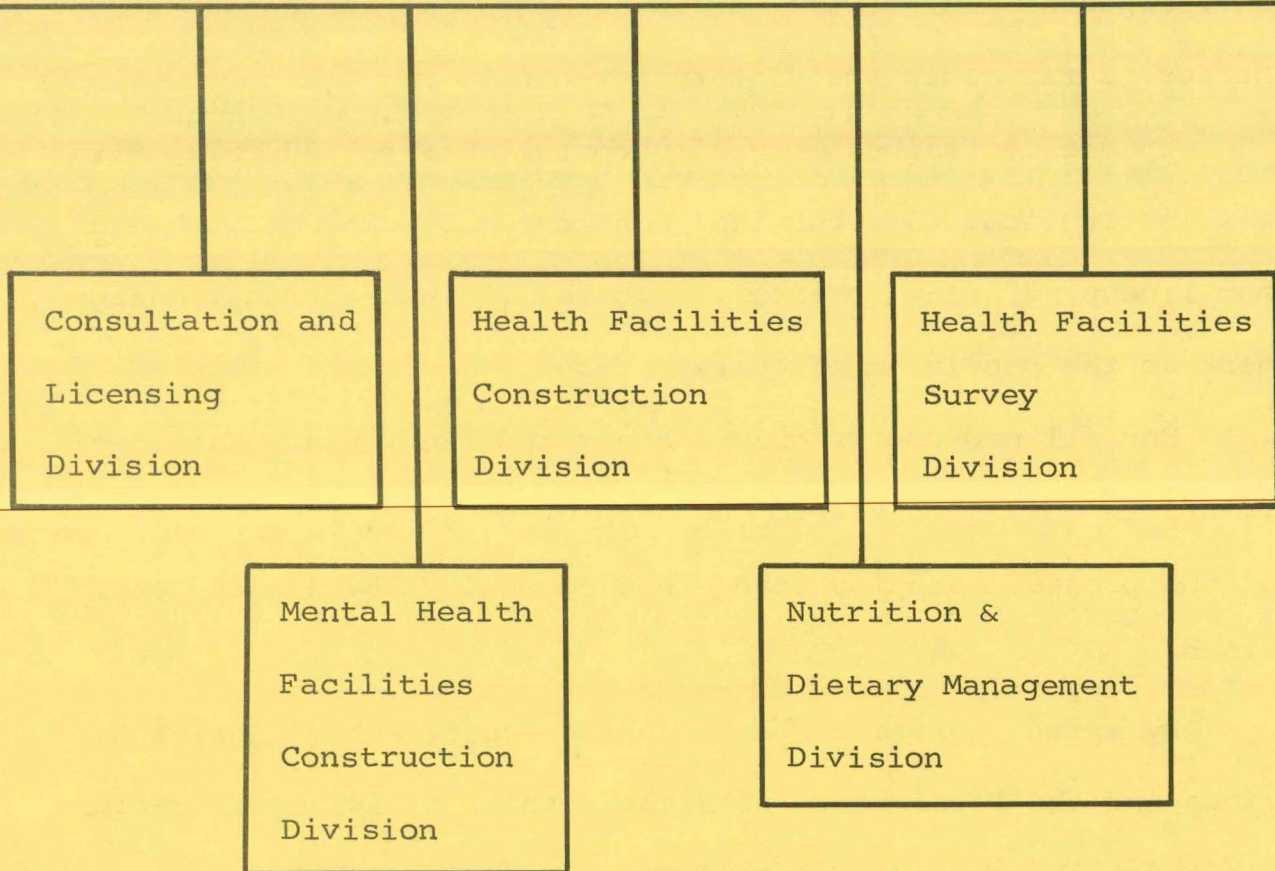
This Division provides consultation to hospital maternity and pediatric departments, schools of nursing and public health nurses working with mothers and children. Consultation and assistance are provided to nurses and doctors preparing to offer classes for expectant parents.

It plays an active part in the operation of poison information centers located throughout the state. Financial support is given to clinics in the state that provide screening and diagnostic services for children with developmental problems.

The Division cooperates with other divisions in promoting immunization, health and safety education and nutrition education. Statistical studies are made on birth certificates and infant and maternal deaths. Maternal deaths are investigated and studied in detail.

This Division participates in postgraduate education for doctors and nurses through participation in courses given at the University Medical and Nursing Colleges and workshops conducted in local areas.

# HEALTH FACILITIES SERVICE



## Services:

The Health Facilities Service coordinates the activities of the several divisions engaged in the promotion, planning and administration of grants-in-aid to assist communities in the construction, maintenance and operation of hospitals, public health centers, extended care facilities, nursing homes, custodial homes, community mental health centers, facilities for the mentally retarded and related medical care facilities essential to the provision of a continuum of medical care. The objective is to balance the location, number and types of health facilities with the needs and capabilities of communities so that safe and effective facilities are as readily accessible to all the people of Iowa as medical economics will permit.

### Consultation & Licensing Division

The function of this Division is to develop and enforce minimum standards of construction, maintenance and operation of hospitals, nursing homes and custodial homes. Primary emphasis is placed upon the promotion of safe and adequate patient care and treatment through programs of education, con-

sultation and professional guidance for institutional personnel. Special in-service training programs are conducted for nurses, nurse aides and dietary personnel.

Specially trained Division consultants periodically visit all institutions to determine continued compliance with minimum licensing requirements and to assist institutional management in the provision of quality care.

For all new construction and remodeling, plans and specifications must be reviewed and approved after the feasibility of the project and its need in a community have been determined.

By mutual agreement, between the Department of Social Services and the Department of Health, this Division is responsible for the survey and certification of compliance with the rules, regulations, and minimum standards for "Skilled Nursing Homes" eligible for vendor payment under Title XIX of P.L. 90-248 and P.L. 89-97 ("Medicaid").

## Health Facilities Construction Division

The Division is responsible for the administration of the provisions of the federal Hospital and Medical Facilities Survey and Construction Act, P.L. 88-443 (Hill-Burton).

The Division maintains a continuous inventory and orderly appraisal of existing hospitals, long-term care facilities, diagnostic and treatment centers, public health centers and re-

habilitation centers; and develops annually a comprehensive State Plan for furnishing adequate facilities for all the people of the state. Through construction grants-in-aid, it encourages and assists communities to expand or modernize existing facilities or construct new facilities and provide the necessary physical plants for health services.

The Division assists project sponsors to develop an approvable application for federal construction grants-in-aid funds and accepts, processes and transmits applications to the federal agency. Division personnel assist in the development of architectural and mechanical plans, supervise the construction and equipping of facilities and process periodic payment of federal funds to the project sponsors.

### Health Facilities Survey Division

This Division is responsible for the administration of certain provisions of Title XVIII of P.L. 89-97, the federal Health Insurance Benefits Program, commonly known as "Medicare." The primary function of the Division is to survey hospitals, extended care facilities and independent laboratories to determine compliance with federal conditions for participation, and to recommend certification of those facilities found in compliance to the Secretary of Health, Education and Welfare.

The Division also provides a program of consultation to assist health facilities personnel correct deficiencies, meet the federal conditions for participation and coordinate the Health Insurance Benefits Program with on-going or planned health activities of the state and local communities.

## Mental Health Facilities Construction Division

The Division is responsible for the administration of the provisions of the Community Mental Health Centers and Mental Retardation Facilities Construction Act, P.L. 88-164.

The major functions of the Division are:

To develop an Annual State Plan for the Construction of Community Mental Health Centers, in cooperation with the Iowa Mental Health Authority.

To develop an Annual State Plan for the Construction of Community Facilities for the Mentally Retarded, in cooperation with the Bureau of Mental Retardation, Department of Social Services.

To assist communities in the development of approvable applications for construction grants and accept and process applications.

To assist in the development of architectural and mechanical plans, supervise the construction and equipping of the projects, audit expenditures, and process periodic payments of federal funds to project sponsors.

To assist communities in the development of approvable applications for Staffing Grants for community facilities for the mentally retarded, and to evaluate such applications for the U.S. Department of Health, Edu-

cation and Welfare.

## Nutrition & Dietary Management Division

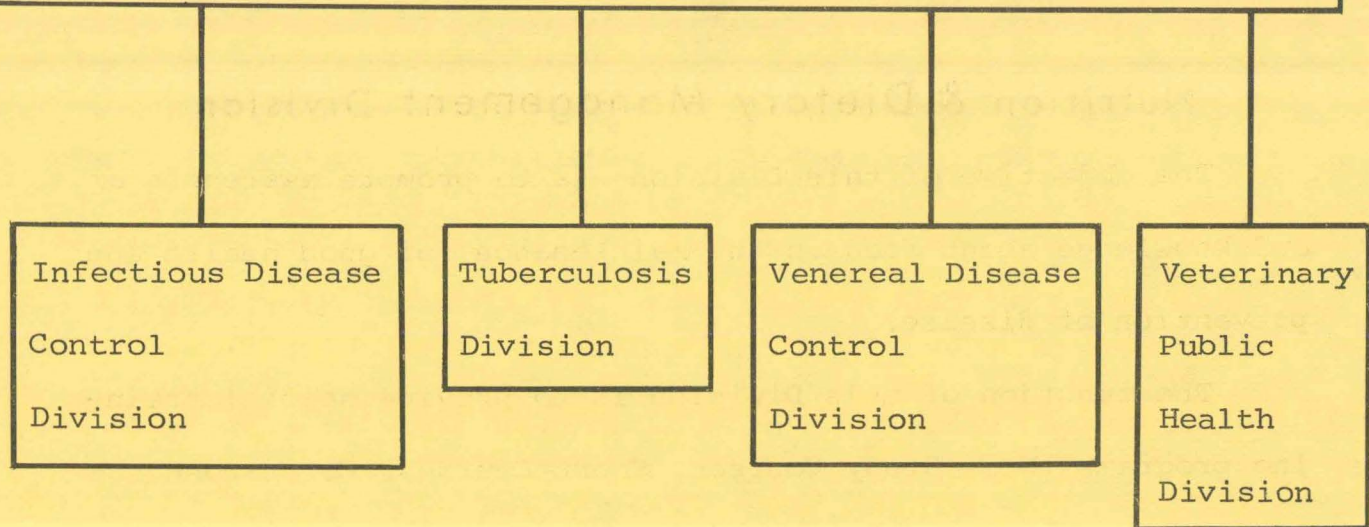
The objective of this Division is to promote awareness of and knowledge about food in the maintenance of good health and prevention of disease.

The function of this Division is to provide special training programs (Home Study Courses, Short Courses, Correspondence Course) and some direct service for dietary personnel in health care facilities; to assist health care facilities to develop plans for new construction or remodeling of existing food service departments; to assist with Medicare surveys and provide materials, guidelines, and consultation for dietitians who are working on a part-time or consultant basis with health care facilities.

The Division provides educational materials on nutrition for public health nursing and dental health programs. Education tools in the form of bulletins, pamphlets, visual aids, and films are prepared, reviewed, and distributed to people in health professions, volunteer agencies, and the public. Workshops are conducted for consulting dietitians, school nurses, nurses teaching Planned Parenthood classes, and others. Specific nutritional programs are created whenever a recognized need develops.



# PREVENTIVE MEDICAL SERVICE



## Services:

The Preventive Medical Service plans, supervises and evaluates the programs of its component Divisions to prevent or control communicable diseases of man. It coordinates these programs with the programs of other Services of the Department and other State agencies.

### Infectious Disease Control Division

This Division develops programs to prevent or control diseases spread from person to person or acquired by man from his food, water or environment. In its operations two basic mechanisms are used: the blocking of pathways of disease transmission and the reduction of numbers of individuals susceptible to disease. Surveillance of disease throughout the State is constantly maintained. Reports of disease incidence are received, consolidated, analyzed and studied. Recommendations are made for the application of preventive measures. Rosters of disease carriers are maintained. Experts are available to assist in diagnosis of difficult cases of infectious disease.

Assistance is provided to physicians and statutory bodies to effect hospitalization of known infectious cases of serious disease for the protection of the public. Education of public health workers, practicing physicians, hospital personnel and the people of Iowa is of utmost importance in all disease prevention and control programs.

The Immunization Section has the primary duty of reducing the number of susceptibles in the State. The newborn follow-up program is designed to encourage parents to secure the complete immunization of their infants. Emphasis is placed on early immunization against diphtheria, pertussis and tetanus, poliomyelitis, measles, rubella, and smallpox. Vaccines are furnished to physicians and clinics without charge. Intensive publicity is conducted to have all children completely immunized before entering school. Vaccine and assistance is provided through school immunization programs to reinforce immune status of children. Intensive efforts are being made to eradicate measles and rubella by immunization. Immunization of adults against tetanus is an important work of the Section.

### Tuberculosis Control Division

Eradication of tuberculosis from Iowa is the aim of this Division. Means employed are intensive case-finding, contact investigation and follow-up. In an effort to bring about an infection-free generation, an aggressive child-centered program of tuberculin skin testing is conducted in many schools. The

public and medical personnel are provided with information in tuberculosis control advances and the value of participation in the surveillance program. In cooperation with the Iowa Tuberculosis and Respiratory Disease Association, mobile x-ray units are operated to provide roentgenographic follow-up of school reactors and other selected high-risk persons.

A Central Tuberculosis Register is maintained. In this are consolidated the items of information from all sources which trace the progress of each known case in the State. This Register is maintained in duplicate at county level in most counties. The Register provides the most efficient method of signaling workers to make follow-up visits, prepare correspondence and query physicians. It also provides statistical material for periodic assessment of the total program.

## Venereal Disease Control Division

This Division is the nerve center for control of venereal disease throughout the State. Control is envisioned to mean the finding and prompt treatment of infected persons and the reduction of sexual promiscuity. A central Register of cases is maintained. This Division directs the epidemiologic follow-up of venereal infections. Personnel of the Division cover the State to provide epidemiologic service. Interviewers seek the source and possible spread, working both backward and forward in time from each index case. Statistics are tabulated and

studied for indication of danger spots. All information regarding individuals is kept absolutely confidential.

Education is playing an increasingly important role in venereal disease control. A large film library provides educational motion picture coverage of the hazards of venereal disease, mostly for the high school audience. Personnel of the Division are active in presenting programs to school groups.

---

### Veterinary Public Health Division

The mission of this Division is the prevention of spread of disease from animal to man. Iowa's position as one of the most important animal husbandry states and the large wild and pet animal population of the State emphasize the need for its services.

This Division deals with rabies, brucellosis, salmonellosis, tularemia, the encephalitides and over a hundred other diseases which are transmissible from animal to man. Surveillance and field investigations are important tools. Education of the public and research projects are also major functions of the Division. The Division provides an effective coordination point for official, voluntary and professional groups interested in and working for animal disease control. The Division also performs the duties assigned to the Department by the state law pertaining to dogs for scientific research.

# Directory

Commissioner of Public Health	Arnold M. Reeve, M.D., M.P.H.	281-5605
Deputy Commissioner of Public Health	Ronald D. Eckoff, M.D., M.P.H.	281-5606
Office of Comprehensive Health Planning	Ben K. Yarrington, B.A., Director	5675
<u>ADMINISTRATIVE SERVICE</u>	K. E. Hartoft, B.A., Chief	5860
Division of:		
Central Administration	K. E. Hartoft, B.A., Director	5860
Licensing and Certification	Billy S. Grammer, Admin. Officer	5644
Records and Statistics	Margaret G. Schima, B.A., Act. Director	5871
<u>CHRONIC ILLNESS &amp; AGING SERVICE</u>	Elizabeth D. Procter, M.D., Chief	5442
Division of:		
Chronic Illness & Aging	Elizabeth D. Procter, M.D., Director	5442
Home Health Care	Lloyd R. Nelson, B.A., M.P.H., Dir.	5442
Rehabilitation	Avery John Menefee, III, Admin. Ass't.	5442
<u>COMMUNITY HEALTH SERVICE</u>	Ronald D. Eckoff, M.D., M.P.H., Chief	5606
Division of:		
Community Emergency Program	Joe Howell, B.S.E., P.H. Advisor	5439
Community Health Assistance	Ralph Seager, M.R.E., Director	5606
Nursing	Thelma Luther, R.N., M.P.H., Director	5447
Regional Office	Ronald D. Eckoff, M.D., M.P.H., Dir.	5606
<u>ENVIRONMENTAL ENGINEERING SERVICE</u>	Paul J. Houser, M.S., Chief	5346
Division of:		
Administration	Mr. Houser, Acting Director	5345
Air Pollution Control	C. L. Campbell, Ph.D., Director	5345
General Sanitation	Jack W. Clemens, M.S., Director	5345
Water Pollution Control	R. J. Schliekelman, M.S., Director	5345
Water Supply	Dean Johnson, M.S., Director	5345
<u>GENERAL HEALTH SERVICE</u>	J. E. Goodrich, D.D.S., M.P.H., Chief	5443
Division of:		
Dental Health	J. E. Goodrich, D.D.S., M.P.H., Dir.	5443
Information & Education	Donald O. Anderson, B.M.E., Director	5446
Injury Control	Helene Deming, M.A., Director	5446
Maternal & Child Health	J. E. Goodrich, D.D.S., M.P.H., Act. Dir.	5443
<u>HEALTH FACILITIES SERVICE</u>	F. W. Pickworth, B.S., Chief	5857
Division of:		
Consultation & Licensing	John DeBiak, M.S., Director	5857
Health Facilities Construction	H. W. Stricker, B.S., Director	5857
Health Facilities Survey	John Buckley, M.H.A., Director	5857
Mental Health Fac. Construction	Walter Lane, B.S., Director	5857
<u>PREVENTIVE MEDICAL SERVICE</u>	S. L. Hendricks, D.V.M., M.P.H., Acting Chief	5643
Division of:		
Infectious Disease Control	Norman Pawlewski, B.S., Assistant	3478
Tuberculosis Control	Robert N. Boshard, B.S., Assistant	3209
Venereal Disease Control	Braxton Moore, B.S., Assistant	3031
Veterinary Public Health	S. L. Hendricks, D.V.M., M.P.H., Director	5643

## Regional Offices

REGIONAL HEALTH SERVICE #1

Box 70, Manchester, Iowa

Telephone: (319)-927-2640

REGIONAL HEALTH SERVICE #4

35 N. Main Street

Council Bluffs, Iowa 51501  
Telephone: (712)-328-3194

REGIONAL HEALTH SERVICE #2A

1104 First Avenue North

Fort Dodge, Iowa 50501

Telephone: (515)-573-8201

REGIONAL HEALTH SERVICE #5

307 E. 7th Street

GMC Building, 2nd Floor

Des Moines, Iowa

Telephone: (515)-281-5264

REGIONAL HEALTH SERVICE #2B

Box 1443

Mason City, Iowa 50401

Telephone: (515)-424-4073

REGIONAL HEALTH SERVICE #6A

Box 65

Washington, Iowa 52353

Telephone: (319)-013-3442

REGIONAL HEALTH SERVICE #3

P. O. 270

Spencer, Iowa 51301

Telephone: (712)-262-4177

REGIONAL HEALTH SERVICE #6B

Box 65

Washington, Iowa 52353

Telephone: (319)-013-3442

# Index

## A

Accidents, 30  
Administration, 13  
Advisory committees, 10  
Aging, services to, 16  
Air pollution control, 25  
Alcoholism, 7

## B

Barbers, licensure, 14  
Birth registration,  
certificates, 14  
Board of health, local, 21  
state, 6

## C

Central Tuberculous Register, 40  
Child care homes, sanitation, 25  
Child health, conferences, 31  
Chiropractor, licensure, 14  
Chronic illness, 16  
Clinics, immunization, 39  
pre-natal, 31  
Commissioner, 5  
Communicable diseases,  
animal to man, 41  
man to man, 38  
reporting, 38  
Comprehensive health planning, 11  
Comprehensive Mental Health  
Center Plan, 36  
Comprehensive Plan for Care of  
Mentally Retarded, 36  
Cosmetology, licensure, 14  
Custodial homes, licensure, 33

## D

Deaths, registration,  
certificates, 14  
Dental Health Education, Iowa  
Plan of, 28  
Dental, licensure, 14

## D

Divorce records, 14

## E

Emergency, services for  
civilians, 20, 30  
Expectant mothers, classes,  
20, 30  
pre-natal clinics, 31  
Extended treatment facilities,  
certification, 35  
Examiners, Board of, 14

## F

Family Planning, 31  
Fetal Deaths, Registration  
Certificate, 14  
Film library, 30  
Fiscal, budgets, reports, etc.,  
13  
Fluoride, adjustment, 28  
Funeral director & embalmer,  
licensure, 14

## G

General services, supplies,  
etc., 13  
Grade A milk supplies, survey,  
25  
Grants-in-aid, 18, 35

## H

Health education materials, 29  
Health Insurance Benefits  
(Medicare), extended  
treatment facilities, 35  
home health services, 18  
hospitals, 33  
Heart diseases, 17  
Homemaker Service, 18  
Hospitals, certification, 33

H

Hospitals, construction, 33  
    licensure, 33  
    nutrition, 3 , 37  
Housing laws, 24

I

Immunization program, 32, 39  
In-Service Training, 34

L

Laboratory, State Hygienic, 10, 24  
Laryngect, progress of, 17  
Legal services, 13  
Legislation, 13  
Licensure, custodial homes, 33  
    hospitals, 33  
    nursing homes, 33  
    professions, 14  
Local health services, 21

M

Marriage records, 14  
Medicaid, 34  
Medical doctors, licensure, 14  
Medical Self Help, 20  
Medicare - see Health Insurance  
    Benefits  
Mentally retarded, programs, 36  
Milk sanitation, 25  
Mobile home parks, 14, 22  
Mobile meals, 18  
Migrant labor, 25

N

Nursing homes, construction, 34  
    licensure, 33

O

Optometry, licensure, 14  
Osteopaths, licensure, 14

P

Personnel, 13  
Physical therapy activities, 14  
Plumbing code, installation of,  
    25  
Podiatry, 14  
Poison Information Center, 31  
Post-graduate education, 32  
Public health nuisances, 25  
Public health nursing, 21  
Public relations & information, 29  
Public swimming pools, 26

R

Radiation control, 24  
Refuse disposal, 23  
Regional Offices, 22  
Rehabilitation centers, 35  
Rehabilitation, stroke, 19  
Reporting, communicable diseases,  
    38  
Rules and regulations, 7

S

Safety research and education,  
    30, 33  
Sanitarians, 22  
Sanitation, 24  
School Health Education Workshop,  
    30  
Sewage, 24  
Statistics, 14

T

Technical and advisory committees,  
    10

V

Vital Statistics, 14  
Vaccine, 38  
Venereal disease, 40



W

Water pollution control, 8, 25  
Water samples, analysis, 26  
Water supplies, public, 26  
Wastewater and water treatment  
operators, certification, 14

STATE LIBRARY OF IOWA



3 1723 02051 8452