

STATE OF IOWA DEPARTMENT OF
Health AND **Human**
SERVICES

Iowa Respiratory Virus Surveillance Report

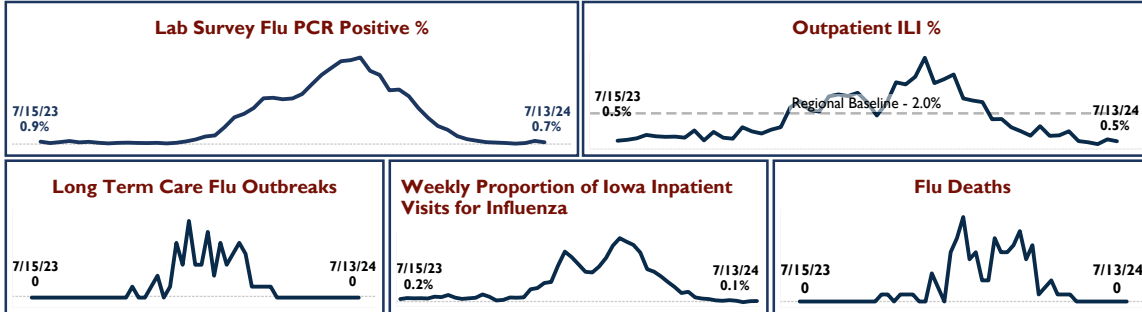
MMWR Week 28
July 7, 2024 - July 13, 2024

Date and time of issue: 7/19/2024 2:04:40 PM

Quick Stats for Week 28 (7/7/2024 - 7/13/2024)

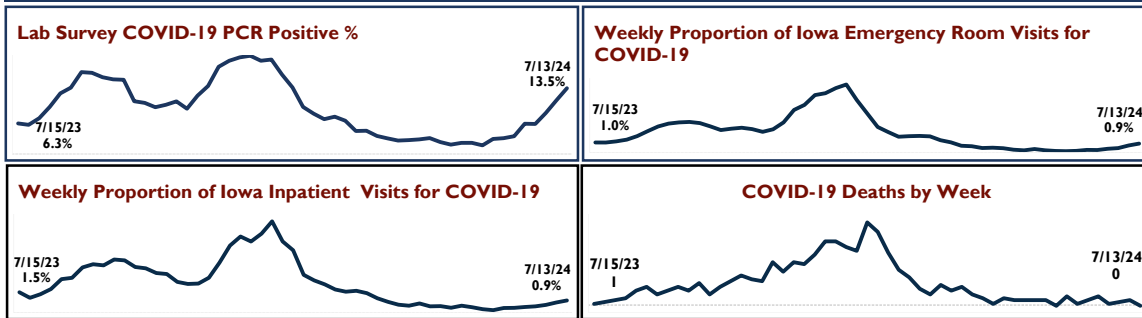
Influenza

Overall Influenza Activity: **VERY LOW**



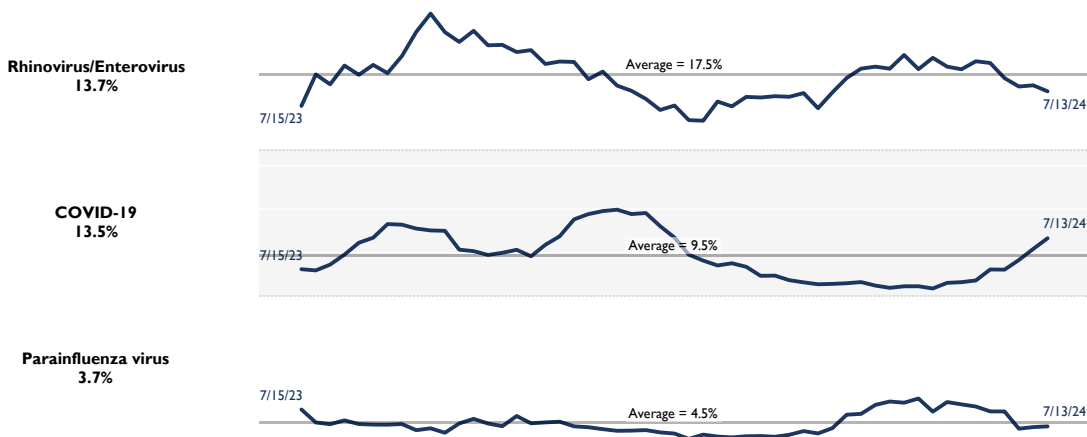
COVID-19

Overall COVID-19 Activity: **LOW**



Other Respiratory Viruses

Top 3 Pathogen Groups by Positive Percent on Respiratory Virus Survey - MOLECULAR ONLY Current Week and Previous 52 Weeks Trends



All data presented in this report are provisional and may change as additional reports are received.

See the [Surveillance Methods](#) page for a detailed description of each component of the Iowa respiratory virus surveillance system including methodology and definitions.

Visit <https://hhs.iowa.gov/public-health/center-acute-disease-epidemiology/flu-report> to subscribe to weekly email reports

International Influenza Activity Summary

World Health Organization Influenza Update

Published 17 July 2024 | For reporting Week 27, ending 07 July 2024

Influenza

In the Northern hemisphere, elevated influenza activity was reported in some countries in Central America and the Caribbean (due to A(H3N2)viruses), Western Africa (due to A(H3N2) and B viruses), Southern Asia (due to A(H3N2) and A(H1N1)pdm09 viruses), and South East Asia (due to A(H1N1)pdm09 viruses). Activity was increasing in a few countries in Central American and the Caribbean and Southern Asia, but remained low at interepidemic levels in most temperate countries.

In the Southern hemisphere, influenza activity remained elevated in several countries in South America (due to A(H3N2) viruses), and in some countries in Eastern Africa (due to A(H1N1)pdm09 viruses), Southern Africa (due to A(H1N1)pdm09 and B viruses), and Oceania (due to A(H1N1)pdm09 and A(H3N2) viruses). However, activity in South America and Southern Africa decreased while increasing in some countries in Eastern Africa and Oceania.

SARS-CoV-2

SARS-CoV-2 activity reported from sentinel surveillance in 60 countries was elevated in some countries in Europe, Western Asia, Central America and the Caribbean and South-East Asia. Activity increased in a few countries in Europe, South-East Asia, Central America and the Caribbean and Western Africa.

Global Influenza and Response System (GISRS), FluNet (www.who.int/fluNet).

<https://www.who.int/teams/global-influenza-programme/surveillance-and-monitoring/influenza-updates/current-influenza-update>

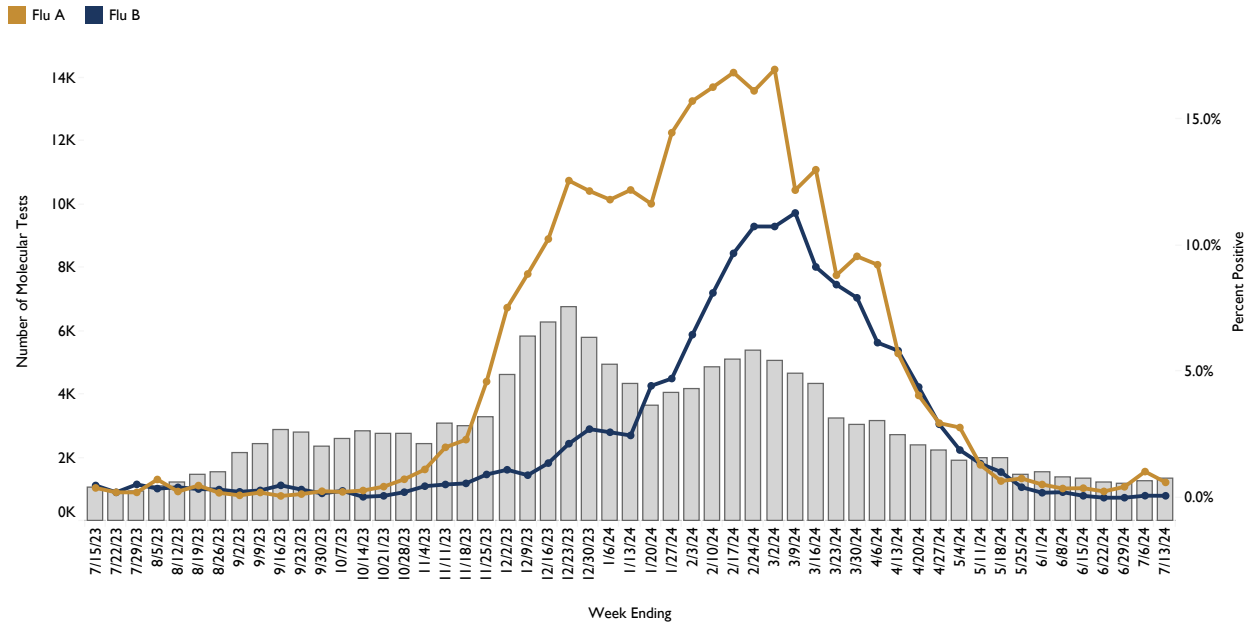
NATIONAL INFLUENZA LIKE ILLNESS (ILI) - CDC



Weekly U.S. influenza surveillance report. Centers for Disease Control and Prevention. <https://www.cdc.gov/flu/weekly/index.htm>

Iowa Respiratory Survey - Influenza

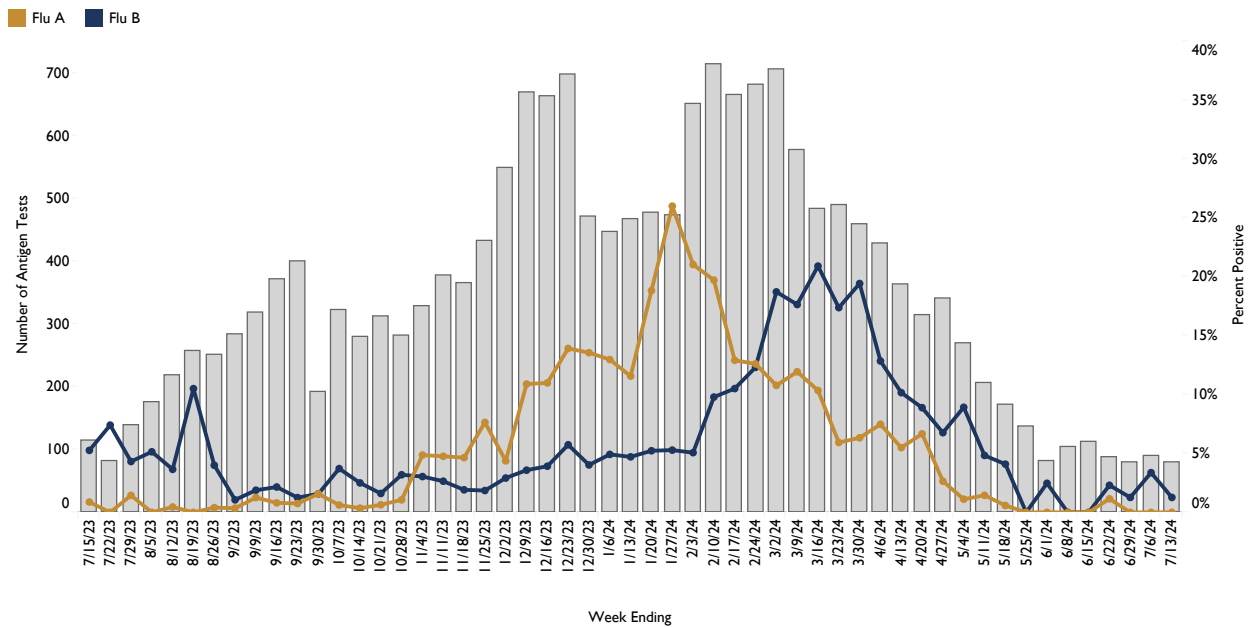
Number of Influenza Molecular Tests and Positive A and B Percentage - Current and Previous 52 Weeks



Flu Tests and Positivity by Method - Current Week

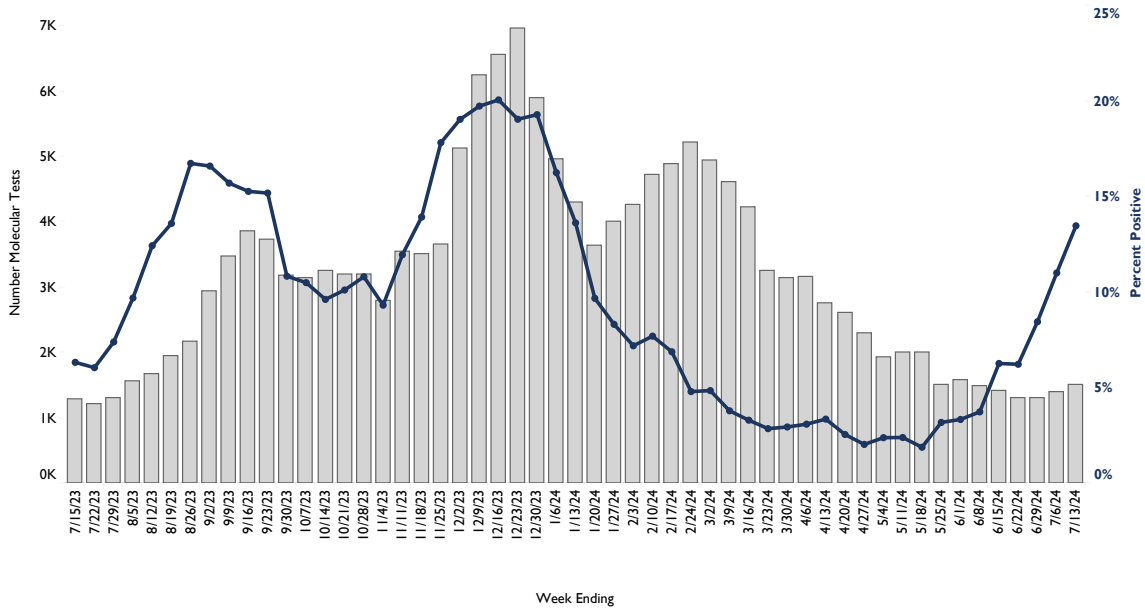
Test Method	Number Positives	Number Tests	Percent Positive
Molecular	9	1,317	0.7%
Antigen	1	79	1.3%
Total	10	1,396	0.7%

Number of Influenza Antigen Tests and Positive A and B Percentage - Current and Previous 52 Weeks



Iowa Respiratory Survey - COVID-19

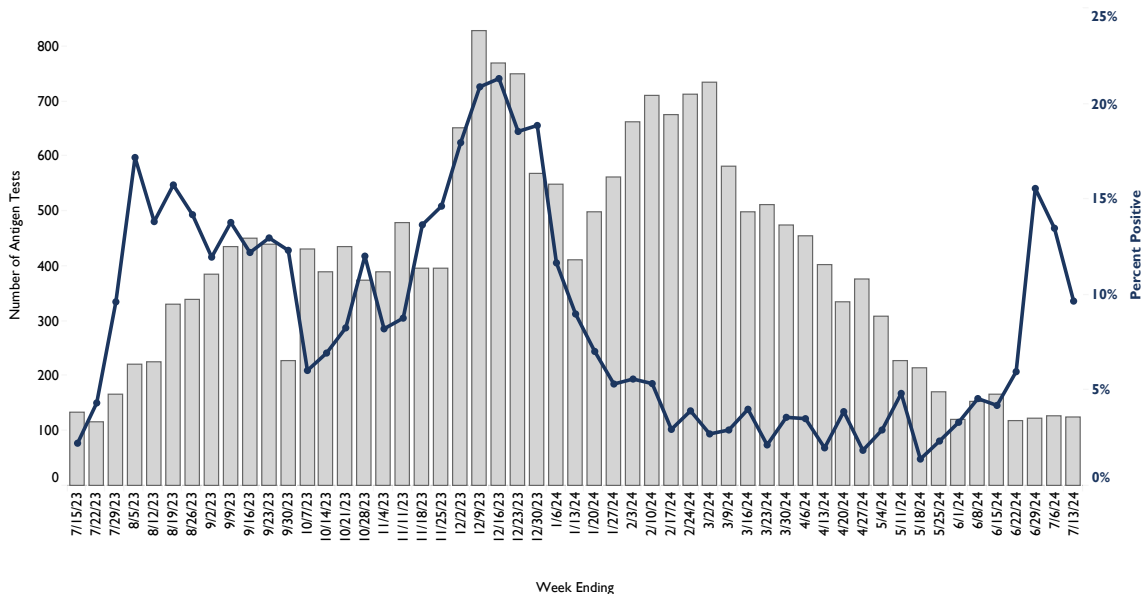
Number of COVID-19 Molecular Tests and Positive Percentage - Current and Previous 52 Weeks



COVID-19 Tests and Positivity by Method - Current Week

Test Method	Number Positives	Number Tests	Percent Positive
Molecular	204	1,513	13.5%
Antigen	12	124	9.7%
Total	216	1,637	13.2%

Number of COVID-19 Antigen Tests and Positive Percentage - Current and Previous 52 Weeks



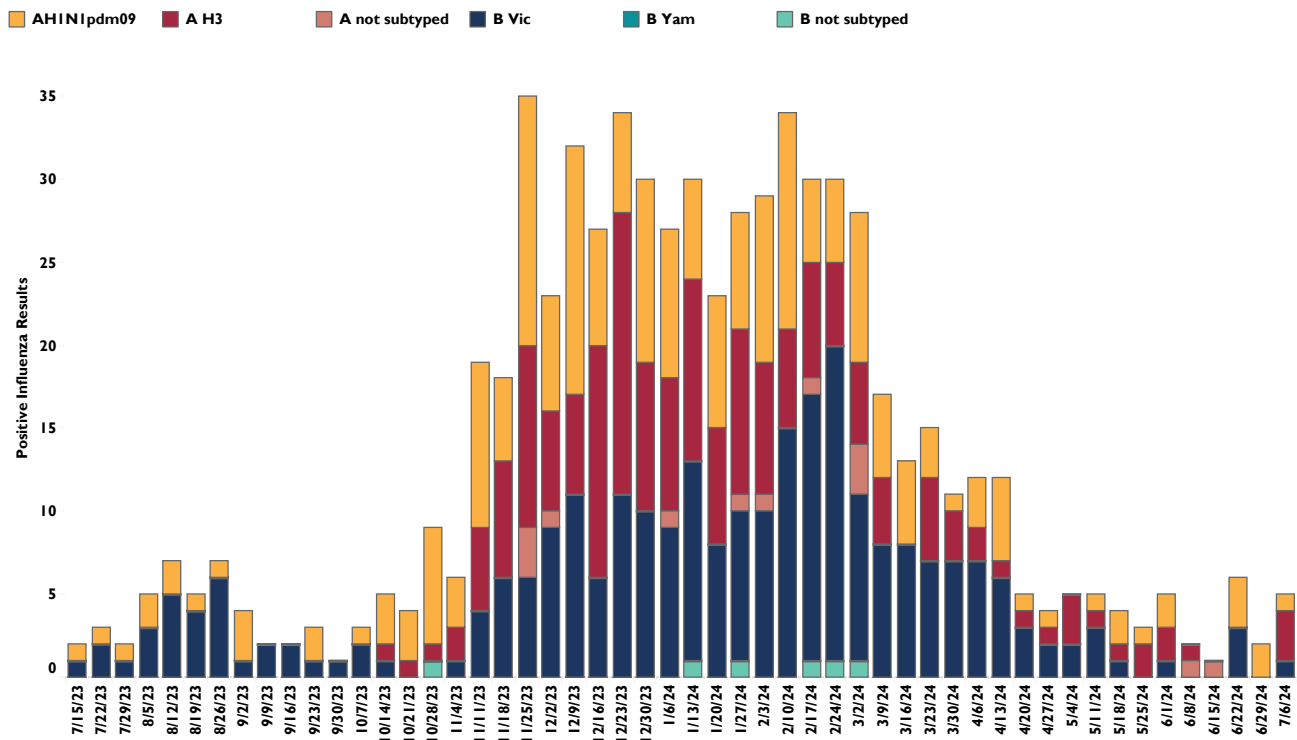
Influenza testing at the State Hygienic Laboratory (SHL)

Cumulative Influenza Viruses Detected by SHL (10/1/2023 - Current Week)

	Influenza A			Total	Influenza B			Total
	A H3	A not subtyped	AH1N1pdm09		B not subtyped	B Vic	B Yam	
Current Week Positives	0	0	0	0	0	0	0	0
Cumulative Positives	177	13	201	391	6	234	0	240

Table Note: Only Iowa residents are included. Specimens listed as "not subtyped" may be pending or were not able to be subtyped due to weak positive lab results. This can be due to poor collection, timing of collection or stage of infection.

Influenza Viruses Detected by SHL by Week (Current Week and Previous 52 Weeks)



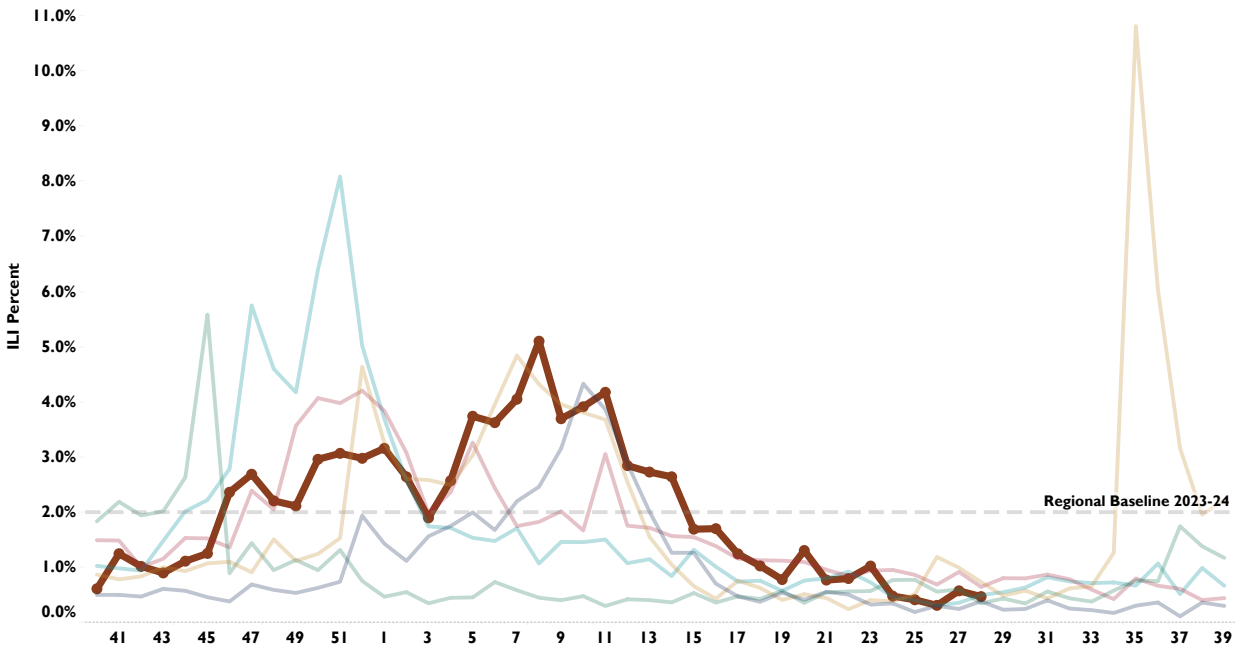
SHL Flu Testing Note: The State Hygienic Laboratory (SHL) is the primary laboratory in Iowa characterizing specimens for influenza surveillance. SHL reports the number of tests performed and the type and subtype/lineage of positive tests to the influenza surveillance network daily. SHL also sends a portion of specimens to CDC for further characterization.

Outpatient Health Care Provider Surveillance Program (ILINET)

Percent Of Outpatient Visits Attributed to Influenza-like Illness (ILI) as Reported by ILINet Sites

2018-19 2019-20 2020-21 2021-22 2022-23 2023-24

ILI Percent by Season and Week



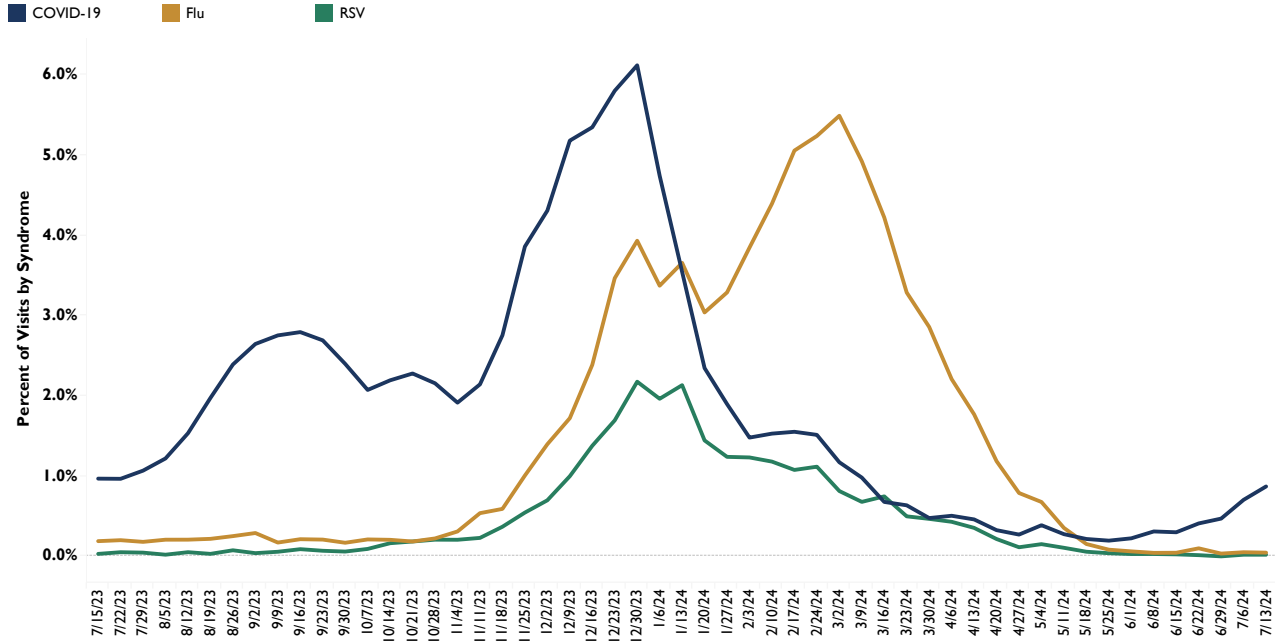
ILI by Age Group Past 4 Weeks

MMWR Week	End Date	Age 0-4	Age 5-24	Age 25-49	Age 50-64	Age 65 and older	Total ILI	ILI Pct
25	6/22/2024	6	4	3	0	2	15	0.42%
26	6/29/2024	2	2	3	0	3	10	0.32%
27	7/6/2024	2	6	6	2	1	17	0.58%
28	7/13/2024	2	2	3	8	2	17	0.48%

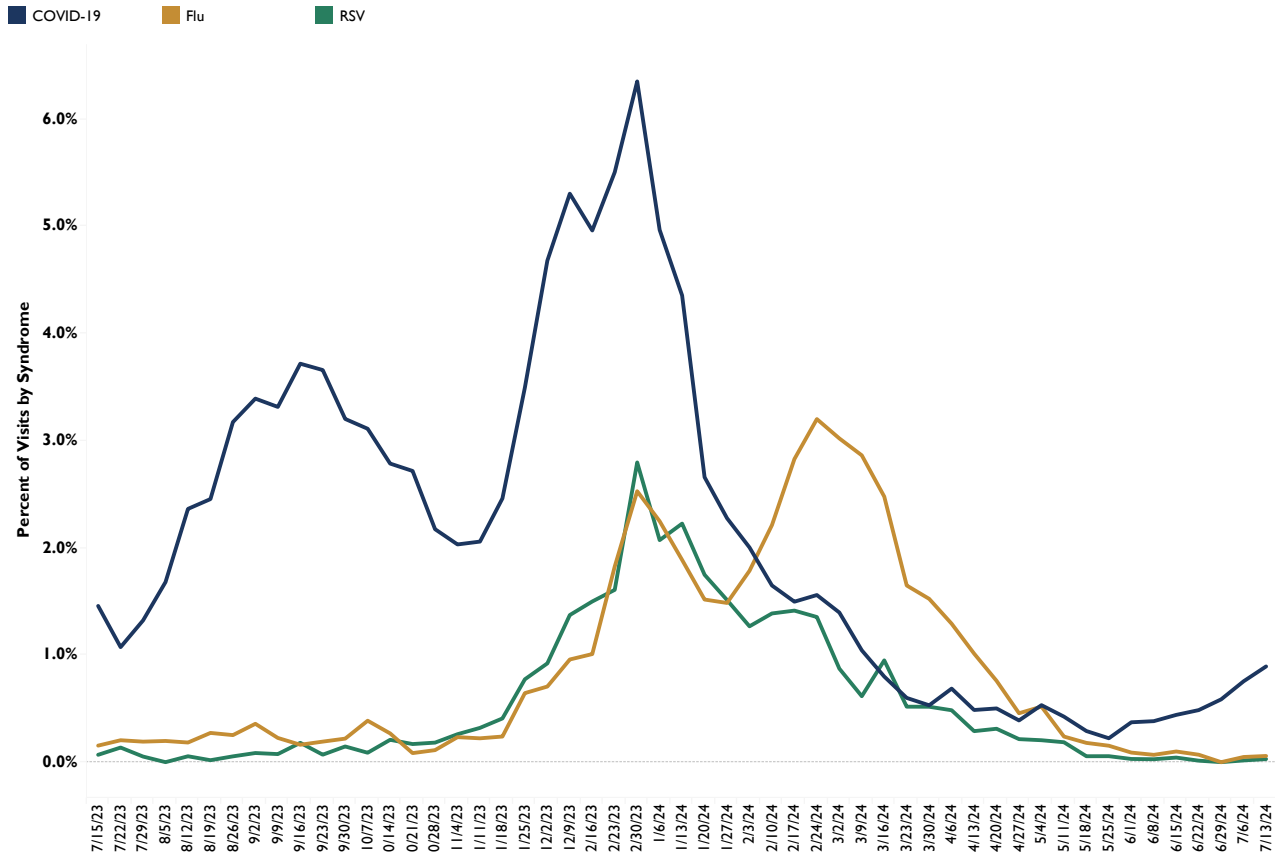
Outpatient ILI Note: Outpatient health care providers who participate in the ILINet (a national influenza surveillance program) report the number of patients seen with influenza-like illness and the total number of patient visits each week. The ILI Definition changed in 2021-22 so that persons with ILI symptoms (cough, sore throat, fever) will be counted even if positive for other respiratory illness (e.g., COVID-19) which makes comparison across seasons difficult.

Iowa Syndromic Surveillance Program

Weekly Proportion of Iowa Emergency Room Visits for Respiratory Syndromes (January 7, 2023 - Current Week)



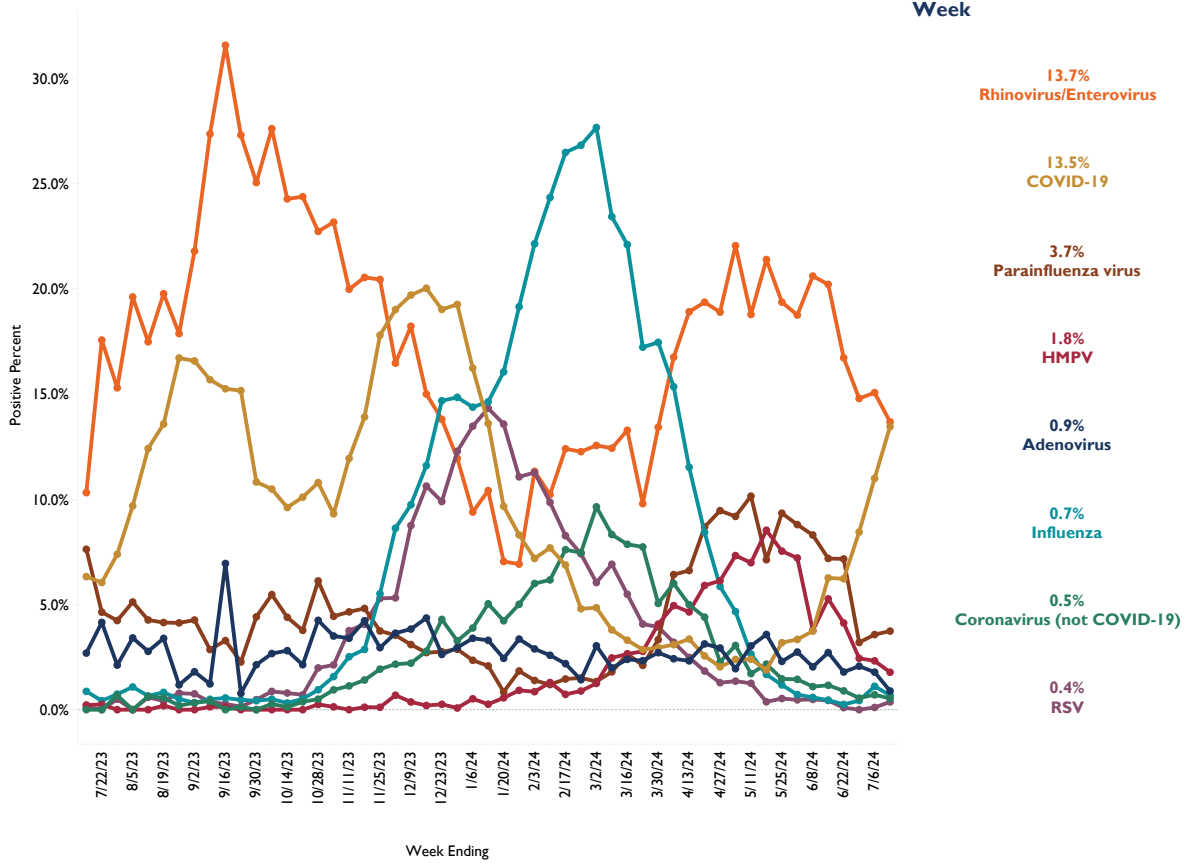
Weekly Proportion of Iowa Inpatient Visits for Respiratory Syndromes (January 7, 2023 - Current Week)



Iowa Respiratory Virus Survey

Percent of Positive Respiratory Viruses by Pathogen Group and Week - Molecular Only (Current and Previous 52 Weeks)

Percent Positive by Week

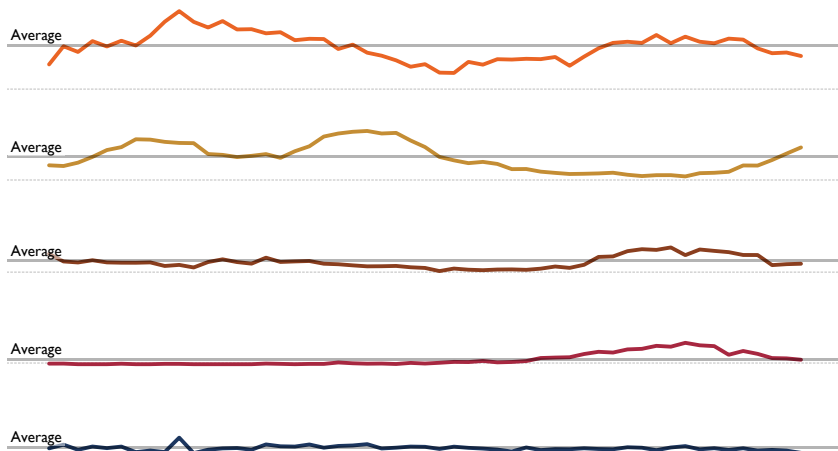


Top 5 Pathogen Groups by Positive Percent on Respiratory Virus Survey - Molecular Only (Current and Previous 52 Weeks)

Percent Positive for Current Week

- 13.7% Rhinovirus/Enterovirus
- 13.5% COVID-19
- 3.7% Parainfluenza virus
- 1.8% HMPV
- 0.9% Adenovirus

Percent Positive by Week



Report Methods, Definitions and Data Sources

NATIONAL INFLUENZA LIKE ILLNESS (ILI) - CDC

The CDC national ILI map shows influenza-like illness, which is determined by symptoms such as fever, cough, and sore throat that can be caused by a number of pathogens in addition to influenza (e.g., COVID-19). Detailed information can be found online at www.cdc.gov/flu/weekly/.

IOWA RESPIRATORY SURVEY

Iowa HHS and SHL run a weekly web-based survey program where laboratorians report the number of influenza, COVID-19 and other respiratory virus tests performed, the testing method (molecular, antigen, or virus isolation) and the number of positive tests.

INFLUENZA TESTING AT THE STATE HYGIENIC LAB

The State Hygienic Laboratory (SHL) is the primary laboratory in Iowa characterizing specimens for influenza surveillance. SHL reports the number of tests performed and the type and subtype/lineage of positive tests to the influenza surveillance network daily. SHL also sends a portion of specimens to CDC for further characterization.

OUTPATIENT HEALTH CARE PROVIDER SURVEILLANCE PROGRAM (ILINET)

Outpatient health care providers who participate in ILINet (a national influenza surveillance program) report the number of patients seen with influenza-like illness and the total number of patient visits each week.

INFLUENZA AND COVID-19 DEATHS:

The Iowa HHS Center for Acute Disease Epidemiology works with the Bureau of Health Statistics to monitor mortality among Iowa residents related to Influenza and COVID-19. Deaths are considered to be influenza-associated when influenza is listed on the death certificate. COVID-associated deaths are determined by diagnosis codes listed on the death certificate.

Both Influenza and COVID-19 death totals are cumulative from the start of the flu season (October 1, 2023 through the end of the current reporting week).

LONG TERM CARE FACILITY INFLUENZA OUTBREAKS

A confirmed influenza outbreak in a care facility is defined as at least two residents with lab-confirmed influenza in the same area of a facility having an illness onset within 72 hours of each other.

IOWA SYNDROMIC SURVEILLANCE

Iowa HHS, CyncHealth Iowa and CDC started implementing syndromic surveillance for the state of Iowa in May 2021. Iowa continues to enroll hospitals to participate and currently has over 90 hospitals participating. Syndromic surveillance provides public health with a near real time system for detecting, understanding, and monitoring health events based on symptoms and diagnoses of patients visiting participating hospitals.