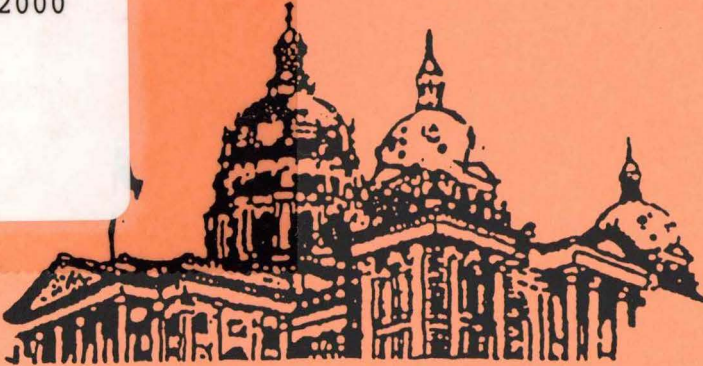


IOWA FEDERAL SURPLUS PROPERTY

DEPARTMENT OF GENERAL SERVICES
FAIRGROUNDS - E. 34TH CT. & E. DES MOINES ST.
DES MOINES, IOWA 50319-0294

FALL, 2000

JK
6388
.A1
I59
2000



Department of General Services
STATE OF IOWA

- DON'T MISS OUR LISTING OF
LATE MODEL, LOW MILEAGE VEHICLES

CONTENTS

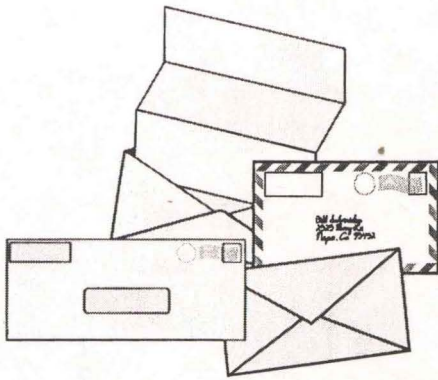
Fixed Priced Vehicles

Leo's Lines

Ways to Contact Us

Dates We Are Closed

Vehicles	1
Vehicle Parts/Accessories	2
Vehicle Engines	2
Machines & Tooling	3
Heavy Equipment	4
Materials Handling Equipment & Supplies	5
Refrigeration & Compressor Equipment	5
Safety Equipment	6
Air Compressors & Pumps	7
Plumbing Supplies	8
Shop Equipment	9
Hand Tools	9
Hardware	11
Building Materials	12
Communication Equipment	13
Electrical Equipment	16
Power Generating Equipment	17
Lab Equipment & Medical Supplies	17
Video & Projection Equipment	20
Computers & Components	21
Office Furniture	30
Household Furniture	31
Food Preparation Equipment & Supplies	31
Office Machines	32
Office Supplies	34
Exercise Equipment	36
Cleaning Equipment	36
Containers	36
Individual Equipment	37
Oils & Grease	38
Miscellaneous Items	38



LEO'S LINES...

Iowa Federal Surplus Property would like to keep you informed on new arrivals, special items, and items you have requested. Would you please E-mail your E-mail address to:

leisenb@max.state.ia.us
pbequet@max.state.ia.us

or fax your E-mail addresses (515) 262-9643. We will soon be able to scan photos and E-mail them to you. We will be looking forward to hearing from you.

We want to thank all of our Customers for making the Federal Surplus Property Program successful for the State of Iowa and look forward fulfilling your needs in the future.

You Can Reach us the Following Ways:

E-Mail Address

leisenb@max.state.ia.us

pbequet@max.state.ia.us

Phone Number

(515) 262-9810

Fax Number

(515) 262-9643

Mailing Address

Iowa Federal Surplus Property
Dept. of General Services
Fairgrounds Distribution Center
East 34th Court & Des Moines St.
Des Moines, Iowa 50319-0294

DAYS WE WILL BE CLOSED:

Friday, November 10, 2000 – Veteran's Day
Thursday & Friday, November 23-24, 2000
Thanksgiving and next day
Monday, December 25, 2000 – Christmas
Monday, January 1, 2001 – New Year's Day
Monday, January 15, 2001 – M. L. King Jr.
Day

LATE MODEL FIXED PRICE VEHICLES ON HAND

Because of the time span between now and when this catalog is printed, please call 515-262-9810 to make sure the vehicles are still available.

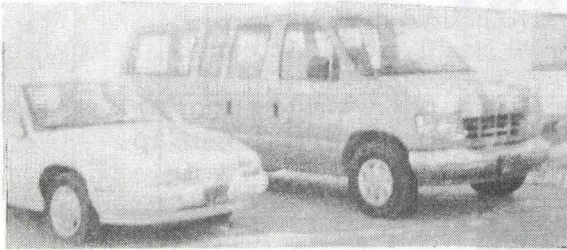
1.	1995 CHEVROLET CORSICA, 4 Dr, AT, AC, PS, PB, FM, 6 Cyl., White, 43,623 Miles, VIN: 1G1LD55MX5Y260753	5,875.00
2.	1995 CHEVROLET CORSICA, 4 Dr, AT, AC, PS, PB, FM, Blue, 4 Cyl., 23,571 Miles, VIN: 1G1LD55475Y221697	6,900.00
3.	1996 CHEVROLET CORSICA, 4 Dr, AT, AC, PS, PB, FM, White, 48,419 Miles, VIN: 1G1LD5545TY221442	5,950.00
4.	1995 CHEVROLET CORSICA, 4 Dr., AT, AC, PS, PB, FM, Stereo, Silver, 21,322 Miles, 4 Cyl., VIN: 1G1LD55485Y293847	6,900.00
5.	1993 CHEVROLET BLAZER TAHOE, 4x4, 4 Dr., 5-Spd, AC, PS, PB, TL, FM, Blue, 59,659 Miles, VIN: 1GN1T3Z3P2185613	8,325.00
6.	1988 CHEVROLET 60 CUSTOM DLX DUMP TRUCK, 4 Speed, AC, Stereo, Gas, 8 Cyl., White, 3,760 Miles, VIN: 1GBG6D1A0JV104718	9,200.00
7.	1993 CHEVROLET S-10 PICKUP TRUCK, 2 Dr, AT, AC, Stereo, Gas, 6 Cyl., Blue, 25,077 Miles, VIN: 1GCCS14Z1P0154863	4,700.00
8.	1990 DODGE RAM CUSTOM PICKUP, 4x4, AT, AC, Gas, 6 Cyl., White, 55,099 Miles, VIN: 1B7HM16X7LS743572	7,225.00
9.	1991 DODGE CARAVAN, 7-Pass, AT, AC, PS, PB, Gas, 3.0, Lt. Blue, 36,691 Miles, VIN: 2B4GK2332MR250002	5,500.00
10.	1992 DODGE RAM 250 STAKE TRUCK, Long Bed, AT, AC, Stereo, 8 Cyl., Silver, 28,617 Miles, VIN: 1B7KE2653NS624217	7,800.00
11.	1997 DODGE RAM 2500 4x4 PICKUP TRUCK, AT, PS, PB, AC, Gas, 8 Cyl., White/Gray, VIN: 1B7KF2626VJ544304	15,500.00
12.	1996 FORD TAURUS GL SEDAN, 4 Dr., AT, AC, PS, PB, Stereo, Gas, 6 Cyl., Green, 41,607 Miles, VIN: 1FALP5228TG239091	8,500.00
13.	1995 FORD CLUB WAGON, 8 Passenger, AT, AC, Stereo, Gas, 8 Cyl., Maroon, 61,765 Miles, VIN: 1FMEE11NOSHB40704	11,200.00
14.	1996 FORD 3-150 CLUB WAGON, 8 Passenger, AT, AC, TL, CR, Stereo, Gas, 8 Cyl., Blue, 85,605 Miles, VIN: 1FMEE11HXTHB11075	9,500.00

15.	1997 FORD F150 STYLESIDE PICKUP TRUCK, Long Bed, AT, AC, TL, CR, Stereo, With Topper, 4.2L, 6 Cyl., Gas, Blue, 75,547 Miles, VIN: 1FTDF1722VKD55518	8,800.00
16.	1988 INTERNATIONAL HARVESTER, S1600 VAN TRUCK, AT, AC, Stereo, Diesel, 8 Cyl., Blue, 30,767 Miles, VIN: 1HTLAZPLXJH595007	9,500.00
17.	1997 PLYMOUTH BREEZE, AT, AC, PS, PB, 4 Dr., Gas, 4 Cyl., Burgundy, 43,549 Miles, VIN: 1P3EJ46C7VN636744	9,550.00



#10 1992 Dodge Ram 250 Stake Truck

#12, 17, and 9
1996 Ford Taurus
1997 Plymouth
1991 Dodge Cara.



#3 1996
Chevrolet
Corsica
#14 1996 Ford
Club Wagon

#15 1997 Ford
F150 w/Topper

#6 1988 Chevrolet
60 Dump Truck





#6 - p1

Mercedes Semi Tractor
1984, 595 Miles

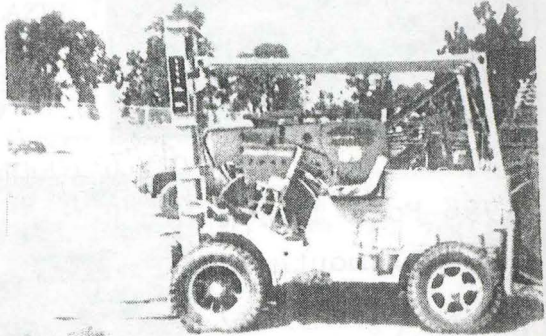
\$9,500.00



#89 - p5

Clark Forklift
3,500 LB Cap.

\$3,000.00



#93 - p5

Pettibone Forklift
6,000 LB. Cap.

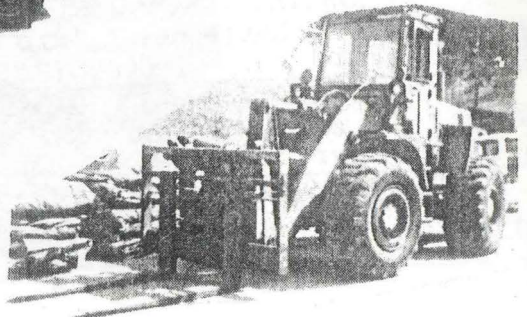
\$5,500.00



#95 - p5

Pettibone Rough
Terrain Forklift
10,000 LB Cap.
Diesel

\$12,500.00



10/02
ITEM
NO.

LATE MODEL FIXED PRICE VEHICLES ON HAND

Because of the time span between now and when this catalog is printed, please call 515-262-9810 to make sure the vehicles are still available.

1
2
3

These are Vehicles that have Come in After the Catalog Went to Print. If You are Looking for a Particular Type of Vehicle, Please Let Us Know. We Might be Able to Find What You Need.

18.	1994 CHEVROLET C2500 CHEYENNE, 4x2, 6 Cyl., AT, AC, Stereo, Silver, 50,808 Miles, VIN: 1GLFL24Z6RZ267092	8,000.00
19.	1994 CHEVROLET ASTRO VAN, 7-Pass. 4.3L, 6 Cyl., AT, AC, Stereo, Blue, 43,731 Miles, VIN: 1GNDM19Z2RB218513	8,000.00
20.	1996 DODGE BR/1500 ST CLUB CAB, 4x4, Long Bed, 5.2L, 8 Cyl., AT, AC, TL, CR, Stereo, White, 69,104 Miles, VIN: 3B7HF13Y3TG133411	14,000.00
21.	1994 FORD, F350 XL, 4x4 CREWCAB, 4-Dr., Long Bed, 5.8L, 8 Cyl., AT, AC, Stereo, w/Topper, Black, 32,849 Miles, VIN: 1FTJW36H8REA39422	15,000.00
22.	1994 FORD F350 XL, 4-Dr, AT, AC, Stereo, w/Topper, Dual Tanks, 8 Cyl., Gray, 41,681 Miles, VIN: 1FTJW35HXREA355664	12,000.00

10/02/00

IOWA FEDERAL SURPLUS PROPERTY CATALOG

ITEM NO.	INVENTORY NUMBER	DESCRIPTION	QTY ON HAND	UNIT SERVICE CHARGE
1.	1000-09-0067-NET	SUPPORT, NETTING, CAMOUFLAGE	10 EA	\$ 5.00
2.	1635-09-0026	PARACHUTE, CARGO	4 EA	\$ 40.00
3.	1705-08-0243-115	TRACTOR, FLIGHTLINE, TOW, MFR. AFC 1985, DIESEL, MDL CJ10A, 15360 MILES, VIN: 3V0TA24XXEM000115	1 EA	\$ 1,200.00
4.	2300-0-0194-249	TRUCK, WRECKER, 1982 JEEP, 5 TON, DIESEL, 6X6, 34,430 MILES, SN: SE1249	1 EA	\$ 5,500.00
5.	2300-07-0001-039	TRUCK, TANK, WATER, 1981 INTERNATIONAL MDL #32A-2, 2600 GAL. CAP. 46,000# GW, 8833 MILES, VIN: 2HTD1125CCA10039 (ASSEMBLED IN 1983)	1 Ea	\$ 14,000.00
6.	2300-07-0007-270	TRUCK TRACTOR, MERCEDES BENZ, 1984, 595 MILES, MDL. 2028LS6X, VIN: 62250515109270	1 Ea	\$ 9,500.00
7.	2300-07-0108-634	TRAILER, WATER, 400 GAL., AERO WELDING, SN: 3634	1 Ea	\$ 450.00
8.	2300-08-0245-125	TRUCK, 1985 IHC, STAKE, 2X4, MDL S1600, DIESEL, 1-1/4 TON, 43,665 MILES, AT, VIN: IHTLAHEK1FHA37125	1 EA	\$ 5,000.00
9.	2325-0-0049-620	TRUCK, 1969 AM GENERAL CORP, M3692, 2-1/2 TON, 6X6, 8561 MILES, VIN: NK098C-0627-10620	1 EA	\$ 3,500.00
10.	2325-05-0028-741	UTILITY TRUCK, 1984 CHEVROLET BLAZER, 4X4, 74,765 MILES, DIESEL, MDL CD10516, VIN: 1G8ED18J9EF199741	1 Ea	\$ 2,000.00
11.	2325-09-0033-377	TRACTOR, 1953 KAISER JEEP, CONV, 5-TN, DIESEL, 6 CYL, 5 SPD TRSM, MAN, AIR BRAKES, PS, 11X20 MIL TREAD, WT 17,500 LBS, FAIR, 28,235 MI, SN: 9524-1337	1 EA	\$ 2,500.00
12.	2325-09-0143-520	TRUCK, CARGO, 1972 KAISER MDL M35A2 2-1/2 TON 6X6, 32,870 MILES, VIN: NK02FG-720525-26520	1 EA	\$ 2,500.00
13.	2325-09-0261-148	TRUCK, MILITARY, MULTIFUEL, 6X6,	1 EA	\$ 2,500.00

10/02/00

IOWA FEDERAL SURPLUS PROPERTY CATALOG

ITEM NO.	INVENTORY NUMBER	DESCRIPTION	QTY ON HAND	UNIT SERVICE CHARGE
		MFR. HERCULES, MDL. LDT465-10; DIESEL; 134 HP, SN: 3997228		
39.	2810-09-0230-253	ENGINE, DIESEL, MFR: CATERPILLAR, SN: 61G1253	1 EA	\$ 750.00
40.	2900-0-0052	STARTER, ENGINE, ELEC.	7 EA	\$ 25.00
41.	2900-0-0195-CBL	CABLE ASSEMBLY	2 EA	\$ 5.00
42.	2900-0-0195-FIL	FILTER ELEMENT, FLUID	1 EA	\$ 2.00
43.	2900-0-0195-FPM	FUEL PUMP ASSEMBLY	1 EA	\$ 5.00
44.	2900-0-0195-INJ	INJECTOR ASSEMBLY	8 EA	\$ 40.00
45.	2900-0-0195-LOC	SWITCH LOCK, IGNITION	3 EA	\$ 1.00
46.	2900-0-0195-MOD	MODULATOR ASSEMBLY	2 EA	\$ 2.00
47.	2900-0-0195-PAD	PAD, RADIATOR RETAIN	11 EA	\$.25
48.	2930-0-0195-FIL	AIR FILTER	2 EA	\$ 10.00
49.	3000-0-0101	BELT DRIVE	1 EA	\$ 1.00
50.	3200-08-0002-AUG	AUGER HANDLE	2 EA	\$ 2.00
51.	3200-08-0193	BLADE, SAW	19 EA	\$ 5.00
52.	3200-09-0175-BLA	BLADES, BAND SAW	6 EA	\$ 2.00
53.	3400-0-0095	MISC MACHINEST TOOLS & TOOLING	12 TB	\$ 10.00
54.	3400-0-0171	BOTTLE RACK	1 EA	\$ 20.00
55.	3400-0-0189-HAN	SOLDER IRON HANDLE	1 EA	\$ 1.00
56.	3400-0-0189-SOL	SOLDER, IRON HEAT CART; SOLDER IRON HOLDER	4 EA	\$ 2.00
57.	3400-0-0192	SLIDE COMPOUND ASSY	1 EA	\$ 25.00
58.	3400-08-0178	TIP CLEANER, SOLDERING	3 EA	\$ 2.00
59.	3400-09-0069	POLISHER, MAGNUS, SN: 41861	1 EA	\$ 35.00
60.	3400-09-0175-HEL	HELMET, WELDING	1 EA	\$ 5.00
61.	3400-09-0175-SCR	SCREEN, WELDING	1 EA	\$ 50.00
62.	3400-09-0252	WIRE, WELDING, COPPER COATED STEEL, .045 DIA.	1 RO	\$ 20.00
63.	3435-0-0177-979	WIRE WELDER ASSEMBLY, HOBART, SN: 91WA02979	1 EA	\$ 107.50
64.	3435-08-0049-311	WELDING MACHINE, ARC, MDL TIG 300/300, SN: AC-577311	1 Ea	\$ 250.00
65.	3440-0-0050	NOZZLE, WELDING	1 EA	\$ 5.00
66.	3475-08-0123	HOT WIRE STRIPPER, KINETICS	1 EA	\$ 5.00
67.	3600-0-0107	DISPENSER RACK, PAPER (FOR BROWN KRAFT PAPER)	1 EA	\$ 20.00
68.	3600-0-0158-385	OFFSET DUPLICATOR, PRINTING PRESS, MDL 350, MFR. A.B.DICK.	1 EA	\$ 1,709.20

10/02/00

IOWA FEDERAL SURPLUS PROPERTY CATALOG

ITEM NO.	INVENTORY NUMBER	DESCRIPTION	QTY ON HAND	UNIT SERVICE CHARGE
		SN: ND385		
69.	3600-0-0159-136	PLATEMAKER, 7 ITEX GRAPHICS CORP PLATE ETCHER, 16K PROCESSOR, MDL 20132000, SN: 2136	1 EA	\$ 1,694.20
70.	3600-09-0001-110	POTTER'S WHEEL, AMACO, SN: 1-10	1 EA	\$ 150.00
71.	3605-0-0080	STENCIL CUTTING MACHINE	1 EA	\$ 25.00
72.	3620-0-0018	CLEAN BENCH	1 EA	\$ 150.00
73.	3700-09-0123	TANK, WATER, MILITARY GREEN, TRAILER MTD, EST. 500 GAL. CAP., 6'7" LONG X 13'8" CIRCUMFERENCE, ENGINE ATTACHED FOR USE AS A SPRAYER	1 EA	\$ 250.00
74.	3700-09-0191	REELS, HOSE, FOR GARDEN HOSES	1 EA	\$ 1.00
75.	3730-0-0075	SHEARS, PRUNING & CLIPPERS, HEDGE	2 EA	\$ 2.00
76.	3800-0-0124	SWEeper, ROTARY, TOWED, MFR. LITTLE BOBBY PRODUCTS, SN: 123	1 EA	\$ 150.00
77.	3805-09-0005-070	SCOOP LOADER, ALLIS CHALMERS, MDL #645M, 1968, WHEELED, DIESEL, 2-1/2 CU YD CAP, 5,971 HRS., SN: 8070	1 EA	\$ 18,000.00
78.	3815-0-0163-593	CRANE, TRUCK, WAREHOUSE, GASOLINE, PETTIBONE, 1972 MDL 10FM, SN: 3593	1 EA	\$ 10,000.00
79.	3835-0-0099-621	*SNOWPLOW, TRUCK MOUNTED, THE GLEDHILL, SN: 51621	1 EA	\$ 750.00
80.	3835-0-0198-316	BLADE ASSEMBLY, PLOW, MDL RV101- 60, VALK MFG, SN: 12316	2 EA	\$ 175.00
81.	3900-0-0178-BUG	CHIP BUGGY	2 EA	\$ 50.00
82.	3900-0-0195	HOIST, CHAIN, JIB CRANE, ONE TON, MANNING MAXWELL & MORE, I- BEAM, TURNS 360 DEGREES, 5" BEAM X 153"	1 EA	\$ 175.00
83.	3900-04-0159-653	PLATFORM LIFT, MFR. LIFT-A-LOFT, MDL VAL3-16, CAP. 500 LBS. YOM: 1977, 35"W X 85"L X 78"H	1 Ea	\$ 1,200.00
84.	3900-07-0114-GRP	GRAPPLING HOOK	19 Ea	\$ 1.00
85.	3900-08-0186	CLAMP, MATERIAL LIFT	9 EA	\$ 5.00
86.	3900-09-0178-477	RESTRAINER, TRAILER, AUTOMATIC,	1 EA	\$ 150.00

10/02/00

IOWA FEDERAL SURPLUS PROPERTY CATALOG

ITEM NO.	INVENTORY NUMBER	DESCRIPTION	QTY ON HAND	UNIT SERVICE CHARGE
		MFR. RITE HITE CORP, SN: 34-3477		
87.	3900-09-0191	RAMPS, STEEL, 7FT X 4FT	3 EA	\$ 40.00
88.	3900-09-0256-000	FORKLIFT, 6,000 LB CAP, ALLIS CHALMERS, GAS, SOLID RUBBER TIRES, 1.508 HRS, SN: 67774000	1 EA	\$ 5,500.00
89.	3900F	FORKLIFT, CLARK, 3,500 LB CAP, GAS		\$ 3,000.00
90.	3905-0-0195	CONVEYER	1 EA	\$ 200.00
91.	3905-08-0119	CONVEYOR ROLLER, GRAVITY	2 EA	\$ 75.00
92.	3915-0-0164-098	WORKSAVOR FORKLIFT, YALE, MDL M3077F-68, SN: 452098	1 EA	\$ 750.00
93.	3915-06-0196-284	FORKLIFT, 1984 PETTIBONE, 6,000 LB CAP, MDL. DA-60A-20, SN: DA-60A-10-02284	1 Ea	\$ 5,500.00
94.	3915-08-0024-244	FORKLIFT, RAYMOND, RIDER STYLE, MDL EC3TF, ELECTRIC, 3,000 LB CAP, SN: 119-373024	1 Ea	\$ 1,200.00
95.	3915-09-0143-797	TRUCK, FORKLIFT, 10,000 LB CAP, 1971 PETTIBONE CORP, DIESEL, MDL A-3520-1, SN: 797	1 EA	\$ 12,500.00
96.	3935-0-0133	HOIST, CHAIN	2 EA	\$ 150.00
97.	3935-09-0001-HOI	HOIST, CHAIN	3 EA	\$ 15.00
98.	3945-08-0053	SHACKLE W/PIN	496 EA	\$.25
99.	4000-0-0180	ROPE, FIBROUS	2 CL	\$ 75.00
100.	4000-09-0143	WIRE ROPE	1 CL	\$ 50.00
101.	4010-0-0132	WIRE ROPE	10 EA	\$ 150.00
102.	4010-0-0177	ROPE, WIRE	1 RO	\$ 100.00
103.	4023-08-0146	SLING	26 EA	\$ 5.00
104.	4100-0-0048-014	AIR FILTER & STAND, WEBER, MDL 5, SN: 9014	1 EA	\$ 100.00
105.	4100-0-0155-165	BENCH, CLEAN, HORIZONTAL FLOW, NUAIRE, SN: 841G5	1 EA	\$ 75.00
106.	4100-0-0163	REFRIGERATION, PREFAB, THERMO-KOOL	1 EA	\$ 750.00
107.	4100-0-0164	BLADES, FAN, 18"	1 EA	\$ 10.00
108.	4100-0-0165-543	RECOVERY UNIT, HIGH PRESSURE, W/REFRIGERANT CLEANING/VACUUM EVACUATION, NEVA SYSTEMS, MDL 3RS, HPC, SN: 963543	1 EA	\$ 750.00

10/02/00

IOWA FEDERAL SURPLUS PROPERTY CATALOG

ITEM NO.	INVENTORY NUMBER	DESCRIPTION	QTY ON HAND	UNIT SERVICE CHARGE
109.	4100-0-0173-169	COMPRESSOR, TECUMSEH, 1 PH, MDL. AK145ET009A4, SN: 302169	1 EA	\$ 100.00
110.	4100-0-0173-170	COMPRESSOR, TECUMSEH, 1 PH, MDL. AK145ET009A4, SN: 302170	1 EA	\$ 100.00
111.	4100-08-0180-GAG	AIR CONDITIONER GAGE W/HOSES, W/METAL CABINET	1 EA	\$ 20.00
112.	4100-08-0235	SEAL, WEATHER, AIR CONDITIONER	22 PG	\$ 1.00
113.	4110-0-0048-LRG	LOUVERS, EXHAUST	10 EA	\$ 40.00
114.	4110-0-0048-SML	LOUVERS, EXHAUST	2 EA	\$ 10.00
115.	4110-09-0045-819	REFRIGERATOR, ABSOCOLD, SN: 017819	1 EA	\$ 20.00
116.	4110-09-0112-588	REFRIGERATOR, MICRO FRIDGE, SN: 911004588	1 EA	\$ 25.00
117.	4110-09-0112-613	REFRIGERATOR, MICRO FRIDGE, SN: 911004613	1 EA	\$ 25.00
118.	4110-09-0112-616	REFRIGERATOR, MICRO FRIDGE, SN: 911004616	1 EA	\$ 25.00
119.	4110-09-0112-647	REFRIGERATOR, MICRO FRIDGE, SN: 911004647	1 EA	\$ 25.00
120.	4110-09-0112-650	REFRIGERATOR, MICRO FRIDGE, SN: 911004650	1 EA	\$ 25.00
121.	4110-09-0112-666	REFRIGERATOR, MICRO FRIDGE, SN: 911004666	1 EA	\$ 25.00
122.	4110-09-0112-667	REFRIGERATOR, MICRO FRIDGE, SN: 911004667	1 EA	\$ 25.00
123.	4110-09-0112-672	REFRIGERATOR, MICRO FRIDGE, SN: 911004672	1 EA	\$ 25.00
124.	4110-09-0112-990	REFRIGERATOR, MICRO FRIDGE, SN: 911004990	1 EA	\$ 25.00
125.	4130-0-0186-532	FREEZER, MECHANICAL, FOOD, KESSEL, SN: KK22930826532	1 EA	\$ 350.00
126.	4150-09-0095	AIR FILTER, 15.5" X 29.5" X 2"	16 EA	\$ 1.00
127.	4200-0-0070	HOOD, GAS DETECTION EQUIPMENT	2 EA	\$ 50.00
128.	4200-0-0095	MISC. SPRINKLER PARTS	1 BX	\$ 10.00
129.	4200-0-0170-408	DRYER, FIRE HOSE, MFR. CIRCUL- AIR, ELEC, MDL D612, SN: D6120408	1 EA	\$ 250.00
130.	4200-0-0181	GLOVES, RUBBER, ELEC, SZ 10	50 PR	\$ 5.00
131.	4200-0-0182	GLOVE SET, CHEMICAL	346 SE	\$ 1.00

10/02/00

IOWA FEDERAL SURPLUS PROPERTY CATALOG

ITEM			QTY ON	UNIT SERVICE
NO.	INVENTORY NUMBER	DESCRIPTION	HAND	CHARGE
132.	4200-0-0183-MIR	MIRROR, TRAFFIC	1 EA	\$ 5.00
133.	4200-08-0186	HELMET, WELDING	2 EA	\$ 12.50
134.	4200-09-0205	CONTAINERS, PRESSURE	1 EA	\$ 15.00
135.	4205-08-0163-039	TRUCK, FIRE, 1975 OSHKOSH (REBUILT/1991), 6X6, DIESEL, 47,176 MI, MDL M-1500, YELLOW W/LARGE RED "9", 31,000 LBS. 30'LGX8'W, H2O & FOAM, VIN: 15039	1 EA	\$ 1,200.00
136.	4225	GOGGLES & GLASSES, SAFETY:	35 Ea	\$.50
137.	4300-0-0018	PUMPS, HYDRAULIC	3 EA	\$ 150.00
138.	4300-09-0233-193	COMPRESSOR, COPELAND, HERMETIC, SN: 90J61193	1 EA	\$ 50.00
139.	4305-0-0132-349	COMPRESSOR, AIR, INGERSOLL RAND, SN: 444349	1 EA	\$ 250.00
140.	4305-0-0200-220	COMPRESSOR UNIT, DAVEY COMPRESSOR CO. 15 CFM, 3500 PSI, SN: 1C41RDEW-39220	1 EA	\$ 3,500.00
141.	4310-09-0008-401	PUMP, RECIPROCATING, BARNES PUMP, 100 GPM, 4", SN: 0401	1 EA	\$ 450.00
142.	4500-0-0125	FANS, DUCT	2 EA	\$ 40.00
143.	4500-08-0235-ELE	ELEMENT, FILTER	1 EA	\$ 5.00
144.	4500-08-0236-COM	COMPENSATOR, EXPANSION, STAINLESS STEEL	2 EA	\$ 7.50
145.	4500-09-0196	BOX MISC VENT PIECES	1 EA	\$ 5.00
146.	4520-0-0051	SINK, PLASTIC	1 EA	\$ 15.00
147.	4520-09-0115	SINK	2 EA	\$ 50.00
148.	4530-09-0195	HEATER, ARVIN, TAG #3804	1 EA	\$ 10.00
149.	4600-0-0189	CARTRIDGE, WATER FILTER	4 TU	\$ 1.00
150.	4700-0-0072-DUCT	FLEXIBLE DUCT	6 BX	\$ 10.00
151.	4700-0-0072-HOS	HOSE, 1"	1 EA	\$ 20.00
152.	4700-0-0072-METL	SHEET METAL, DUCT MATERIAL	16 EA	\$ 10.00
153.	4700-0-0072-SELT	SEALTITE, 1-1/4" 45 DEGREE	3 BX	\$ 5.00
154.	4700-0-0189	CONDUIT, PIPE 1" THINWA	76 EA	\$ 1.50
155.	4700-09-0095	INSULATION, PIPE	1 BX	\$ 25.00
156.	4700-09-0256	DUCT, INSULATION, 6 X 25	120 EA	\$ 10.00
157.	4705-0-0189-3/8	COPPER TUBING, 3/8"OD, 50 FT LG	1 RO	\$ 5.00
158.	4710-0-0189-VAC	TUBING, VACUUM, 1-1/2" ID	1 EA	\$ 2.00
159.	4725-0-0097	HOSE ASSEMBLY, NON-METALLIC	2 EA	\$ 50.00

10/02/00

IOWA FEDERAL SURPLUS PROPERTY CATALOG

ITEM NO.	INVENTORY NUMBER	DESCRIPTION	QTY ON HAND	UNIT SERVICE CHARGE
160.	4740-0-0072	STEAM TRAP THERMOMETER	2 EA	\$ 5.00
161.	4740-0-0072-VALV	VALVE, POP OFF	11 EA	\$ 5.00
162.	4740-0-0189-ADP	ADAPTER, PLUMBING, 1/8" (PKG)	1 PG	\$ 1.00
163.	4740-0-0189-COU	COUPLINGS, NO-HUB, 1"; 2"; 3/4"	14 EA	\$.10
164.	4740-0-0189-FIT	PLUMBING FITTINGS: BUSHINGS, UNIONS, CAPS, COUPLINGS; ELLS; NIPPLES; ADAPTERS	176 EA	\$.10
165.	4740-0-0189-PFT	FITTINGS, PVC PLASTIC	92 EA	\$.10
166.	4740-0-0189-PVC	FITTINGS, PLASTIC PVC	72 EA	\$.05
167.	4740-08-0116	PIPE JOINTS, PVC, MISC.	41 EA	\$ 1.00
168.	4800-0-0047-VALV	VALVES, MISC.	47 EA	\$ 5.00
169.	4800-0-0072-RELV	VALVE, RELIEF	6 EA	\$ 1.00
170.	4800-0-0072-VAL	VALVE, SOLENOID	11 EA	\$ 5.00
171.	4800-0-0095	VALVE	2 EA	\$ 15.00
172.	4800-0-0125	VALVES, MISC.	10 EA	\$ 7.50
173.	4800-0-0189	STOP, GAS VALVE SERVICE	10 EA	\$ 1.00
174.	4800-0-0189-VAL	VALVE, VAC, 1-5/8" ID, 90A	2 EA	\$ 50.00
175.	4800-08-0125	COCK, DRAIN	486 EA	\$.50
176.	4800-08-0236-FLO	VALVE, FLOW CONTROL	4 EA	\$ 5.00
177.	4800-08-0236-TRP	TRAP, STEAM	3 EA	\$ 5.00
178.	4800-09-0050-63A	VALVE, 4", FOR DELUGE VALVES ON SPRINKLER SYSTEMS, MDL E1. (SN: 05963A)	1 EA	\$ 50.00
179.	4800-09-0145	VALVE, BALL & PARTS	1 BX	\$ 20.00
180.	4800-09-0197	HANDLES, VALVE	25 EA	\$.50
181.	4800-09-0207	VALVE, LECTURE BRASS CG	2 EA	\$ 2.00
182.	4810-0-0048-GVAL	GATE VALVE	1 EA	\$ 25.00
183.	4810-08-0233	VALVES, GATE	2 EA	\$ 15.00
184.	4810-08-0236-GAT	VALVE, GATE	3 EA	\$ 15.00
185.	4810-08-0236-GVL	VALVE, GATE	1 EA	\$ 25.00
186.	4815-0-0092-VALV	VALVE, 3/4" SAFETY	6 EA	\$ 5.00
187.	4820-0-0095	AIR REGULATOR	1 EA	\$ 10.00
188.	4900-0-0081	LIFT, TRANSMISSION, MFR. AUTO SPECIALTIES	1 EA	\$ 250.00
189.	4900-0-0101	NOZZLES, ALUMINA	5 BX	\$.50
190.	4900-0-0101-SEAL	SEAL	1 EA	\$.50
191.	4900-0-0181-MIR	MIRROR, INSPECTION, POCKET TYPE	16 EA	\$ 1.00
192.	4900-0-0185-018	BALANCER, TIRE, SUN, MDL 5800, SN: 521GF018	1 EA	\$ 300.00

10/02/00

IOWA FEDERAL SURPLUS PROPERTY CATALOG

ITEM NO.	INVENTORY NUMBER	DESCRIPTION	QTY ON HAND	UNIT SERVICE CHARGE
193.	4900-07-0186-FIL	FILLER & BLEEDER	1 Ea	\$ 50.00
194.	4900-08-0235	SERVICE KIT, CYLINDER, PARKER	1 KT	\$ 5.00
195.	4900-09-0001-F93	ANTIFREEZE RECYCLE MACHINE, MDL BE-15C, SN: 02339F93	1 EA	\$ 250.00
196.	4900-09-0188-RAC	RACKS, TIRE	2 EA	\$ 75.00
197.	4900-09-0261-907	DEGREASER, PHILLIPS, VAPOR TYPE, 7'L X 5.5'H X 4'W, SN: 13907	1 EA	\$ 1,500.00
198.	4905-0-0080	LIGHT, IGNITION TIMING	11 EA	\$ 25.00
199.	4905-0-0181-LIT	LIGHT, IGNITION TIMING	3 EA	\$ 10.00
200.	4910-0-0002-987	MOUNTER/DEMOUNTER, TIRE, BISHMAN DIV. SN: 10987	1 EA	\$ 500.00
201.	4910-08-0228-SPR	SPREADER, TIRE, BRANICK, MDL EF/HD, SN: 79A2621	1 EA	\$ 750.00
202.	4920-0-0075-141	STEAM CLEANER, AMERICAN CLEANER, 15 HRS, SN: A2141	1 EA	\$ 500.00
203.	4925	CABLES, JUMPER & SLAVE	3 EA	\$ 25.00
204.	4940-0-0161-GUN	SPRAY GUN, PAINT	2 EA	\$ 10.00
205.	4955-0-0164	HEAT GUN	1 EA	\$ 5.00
206.	5100-0-0095	RACK, 70-TOOL HOLDER	2 EA	\$ 20.00
207.	5100-0-0095-CAB	CABINET, TOOL	1 EA	\$ 40.00
208.	5100-0-0095-CHK	DRILL CHUCKS	3 EA	\$.25
209.	5100-0-0122	BAG, LINEMAN'S TOOL	6 EA	\$ 5.00
210.	5100-0-0132	WRENCH SET, SOCKET	2 SE	\$ 35.00
211.	5100-0-0132-ROT	ROTARY TOOL KIT, ELEC. PRECISE, SN: 0280	1 SE	\$ 150.00
212.	5100-0-0181	BENDER, TUBING, ASSTD SIZES	102 EA	\$.25
213.	5100-0-0184-HTR	HEATER, SPOT	1 EA	\$ 5.00
214.	5100-0-0198	PULLER, NAIL	24 EA	\$ 2.00
215.	5100-0-0198-CSK	COUNTERSINK	3 EA	\$.25
216.	5100-0-0198-FIL	FILER, SAW	1 EA	\$ 1.00
217.	5100-0-0198-HAN	HANDLES, WOOD	7 EA	\$.10
218.	5100-0-0198-KNI	KNIFE, CRAFTSMAN	15 EA	\$ 1.00
219.	5100-0-0198-SHA	SHARPENER, PLAIN BLADE & CHISEL	35 EA	\$ 5.00
220.	5100-0-0200	SAW KNIFE, SHOVEL AS	10 EA	\$ 2.50
221.	5100-07-0103-TRQ	TORQUE WRENCH	1 Ea	\$ 15.00
222.	5100-08-0120-HAN	HANDLE, FILE	3 EA	\$.25
223.	5100-08-0125	EXTRACTOR SET, SCREW	1 SE	\$ 50.00
224.	5100-08-0161-WHE	WHEEL WRENCH, LUG NUT	11 EA	\$ 2.00
225.	5100-09-0001-WRE	WRENCH, STRAP	2 EA	\$ 1.00

10/02/00

IOWA FEDERAL SURPLUS PROPERTY CATALOG

ITEM NO.	INVENTORY NUMBER	DESCRIPTION	QTY ON HAND	UNIT	SERVIC CHARGE
226.	5100-09-0065	CUTTER, WIRE ROPE	1	EA	\$ 50.00
227.	5100-09-0067-BIT	BIT, SCREWDRIVER	97	EA	\$.25
228.	5100-09-0067-BRK	ADJUSTING TOOL, BRAKE	3	EA	\$ 1.00
229.	5100-09-0067-TAN	TANG BREAKOFF TOOL	26	EA	\$ 2.00
230.	5100-09-0093	WRENCH, PIPE	1	EA	\$ 75.00
231.	5100-09-0093-KIT	TOOL KIT	2	KT	\$ 150.00
232.	5100-09-0140	PIONEER TOOL KIT	1	KT	\$ 350.00
233.	5100-09-0140-HOL	HOLDER, SCREWDRIVER	43	EA	\$.50
234.	5105-0-0045	RIVETER, BLIND, PNEUMATIC	1	EA	\$ 40.00
235.	5106-0-0074	ELEC SCREW DRIVER	1	EA	\$ 20.00
236.	5110	CHISELS	87	EA	\$ 1.00
237.	5111-0-0127	SAW, CROSSCUT, ONE MAN	3	EA	\$ 7.00
238.	5111-0-0198	SAW, KEYHOLE, LRG	4	EA	\$ 5.00
239.	5111-0-0198-SAW	SAW, KEYHOLE, SM	5	EA	\$ 1.00
240.	5111-09-0161	SAW, KEYHOLE	2	EA	\$ 5.00
241.	5112-0-0189	BAND SAW BLADE, 3/4	23	EA	\$ 5.00
242.	5115-0-0192	DRILL BITS	17	EA	\$ 10.00
243.	5115-0-0195-BIT	BITS, DRILL	97	PG	\$ 2.00
244.	5115-0-0198-BIT	BITS, WOOD	1	SE	\$ 7.50
245.	5116-0-0070-TWDR	DRILL, TWIST (12/PG)	1	PG	\$ 10.00
246.	5116-0-0198	BRACE & BIT	16	EA	\$ 5.00
247.	5119-09-0258	CLAMP, CLAW, ISO	4	EA	\$.50
248.	5120-09-0202	JACK, SCISSORS, HAND	3	EA	\$ 50.00
249.	5122-0-0181-PUL	PULLER, MECHANICAL	4	EA	\$ 5.00
250.	5122-09-0067-PUL	PULLER KIT, UNIVERSAL	3	EA	\$ 25.00
251.	5123-0-0195	TOOL, BORE	52	EA	\$ 5.00
252.	5123-09-0067-REM	REMOVER, ELECTRICAL	6	EA	\$ 1.00
253.	5125-0-0095-DIE	DIE	1	EA	\$ 5.00
254.	5125-09-0175-TAP	TAP & DIE SET	1	SE	\$ 100.00
255.	5127	TOOL BOXES, ALL: HAND CARRIED; TOOL CABINET; TOOL CART;	4	Ea	\$ 25.00
256.	5127-0-0125	TOOL BOX (TRUCK)	1	EA	\$ 20.00
257.	5128-0-0181	CARRIER, BATTERY	10	BX	\$ 5.00
258.	5128-0-0198-POU	POUCHES, TOOL	34	EA	\$.50
259.	5129-0-0122	DIE & TAP SET, THREAD	4	EA	\$ 100.00
260.	5129-0-0124	TOOL KIT, PIONEER, ENG	1	KT	\$ 50.00
261.	5129-0-0134	TOOL KIT	1	KT	\$ 100.00
262.	5129-0-0161-SSE	SOCKET SET, SOCKET	2	SE	\$ 35.00
263.	5129-0-0182	TOOL KIT, TE 50-B	3	SE	\$ 20.00

10/02/00

IOWA FEDERAL SURPLUS PROPERTY CATALOG

ITEM NO.	INVENTORY NUMBER	DESCRIPTION	QTY ON HAND	UNIT SERVICE CHARGE
264.	5129-08-0075	TOOL KIT, AC MAINT	2 EA	\$ 40.00
265.	5129-08-0195-THR	THREADING SET, SCREW	2 KT	\$ 100.00
266.	5129-08-0206-CLU	TOOL KIT, CLUTCH ALIGN	2 KT	\$ 75.00
267.	5130-0-0181	WRENCH, COMBINATION, 1-13/16	4 EA	\$ 7.50
268.	5130-09-0258-BNG	BUNG WRENCH	2 EA	\$.50
269.	5132-0-0181-ADP	ADAPTER, 3/4" X 1"	33 EA	\$ 2.00
270.	5136-09-0067-EXT	EXTRACTOR, SCREW	35 EA	\$ 1.00
271.	5139-07-0138-RAK	RAKE, ASPHALT	2 Ea	\$ 12.00
272.	5190-0-0180	WRENCH, TORQUE	1 EA	\$ 20.00
273.	5200-0-0122	PLATE, SURFACE	1 EA	\$ 10.00
274.	5200-0-0198-BEV	BEVEL, SLIDING T	3 EA	\$.50
275.	5200-0-0198-SCR	SCRIBE	4 EA	\$ 1.00
276.	5200-08-0101	GAGE	1 EA	\$ 5.00
277.	5200-09-0178-228	GAGE SET, CYL. PLUG, SIZE CONTROL CO, SN: 7228	1 EA	\$ 150.00
278.	5200-09-0252	GAGE OVERBASE	1 EA	\$ 25.00
279.	5205-0-0189	RULE, FLEXIBLE SATEN CH	1 PG	\$ 1.00
280.	5205-0-0198-RUL	RULE, 6 FOOT	2 EA	\$ 1.00
281.	5225-09-0043	GAGE, 0-160 PSI, ASCROFT	8 EA	\$ 15.00
282.	5225-09-0043-STD	HEIGHT STANDARD, 24", 20" (STARRETT CO), 14" (MUELLER GAGE CO), NO S/N'S	1 EA	\$ 35.00
283.	5225-09-0254	GAGE, GAP SETTING	17 EA	\$.25
284.	5230-0-0198	SQUARES	9 EA	\$ 1.00
285.	5300-0-0048-TWIS	TWIST, NYLON	1 PG	\$ 1.00
286.	5300-0-0161-STR	STRAP, PIPE, COPPER, 1/2", 120/BX	39 BX	\$ 2.00
287.	5300-0-0162	WALL MOUNT, TV, 19-20" TELEVISION	19 EA	\$ 20.00
288.	5300-0-0189	ANCHORS, RED H, PHILLIPS,	19 BX	\$ 25.00
289.	5300-0-0189-DRL	DRILL, MASON, 3/16" - 4"; 1/4" - 6"ST; 3/8" 6"	2 EA	\$ 1.00
290.	5300-0-0189-TUB	INSULATED SHRINK TUBING	1 PG	\$ 1.00
291.	5300-0-0198	STAPLES TACKER	6 BX	\$ 1.00
292.	5300-0-0198-STA	STAPLERS	6 EA	\$ 1.00
293.	5300-08-0251	DREMEL BRUSH	2 EA	\$.25
294.	5315-09-0023	SCREW, LAG	2 BX	\$ 1.00
295.	5325	NAILS (30D, 4-1/2" COMMON- 50#/BX)(2-1/4")(FINISHING)	10 Bx	\$ 10.00

10/02/00

IOWA FEDERAL SURPLUS PROPERTY CATALOG

ITEM NO.	INVENTORY NUMBER	DESCRIPTION	QTY ON HAND	UNIT SERVICE CHARGE
296.	5350-0-0189-CRD	CORD, O-RING•1/8" AND 3/16"	2 BD	\$.25
297.	5365-0-0101	ABRASIVE WHEELS	2 BX	\$ 2.00
298.	5365-0-0181-DIS	DISK, ABRASIVE, 2", 100/BX	9 BX	\$ 1.00
299.	5365-0-0181-WHE	WHEEL, POLISHING	3 EA	\$.50
300.	5500-08-0188	RACK, BANNER, LARGE, WOOD	1 EA	\$ 35.00
301.	5500-09-0126-BRD	HARDBOARD, TEMPERED, SIS, 1/4", 23-7/8X47-7/8 PLUS D: 1/4" X 11- 1/4X24-1/2" PLUS O: 11-1/4"X24- 1/2" PLUS O, MINUS 1/16"	424 PC	\$.25
302.	5505-09-0126-SHT	LUMBER, SOFTWOOD #2, 2X6X8	1 PC	\$ 1.50
303.	5505-09-0126-SOF	LUMBER, SOFTWOOD, FED SPEC MM-L 751 STD 4X6X16; 2X12X16	5 PC	\$ 7.50
304.	5515-09-0126	DOOR, EXTERIOR, FIR, 4-LITE, W/O GLASS, 3 PANEL, 3'X7'X1-3/4"	1 EA	\$ 50.00
305.	5515-09-0126-SWD	LUMBER, SOFTWOOD, FED SPEC, 2X8X8	4 PC	\$ 1.50
306.	5600-0-0047-TAPE	TAPE INSULATION	1 EA	\$ 2.00
307.	5600-0-0095-WPAP	WALL PAPER	1 RO	\$ 5.00
308.	5600-09-0116	JACKETING, METAL, W/CROSS CRIMP, .016" X 36", APPROX 100 FT ROLL	1 RO	\$ 15.00
309.	5600-09-0126	BOARD, INSULATING, WHITEFACE, 4'X8'X1/2", CELOTEX	2 SH	\$ 2.00
310.	5600-09-0126-FOM	FOAMULAR, PINK, 2X24X96"	2 PC	\$ 1.00
311.	5600-09-0258	RUBBER SHEET	2 EA	\$ 5.00
312.	5610-08-0187	DRAINAGE BLOCK, 11" X 3"	16 EA	\$ 5.00
313.	5630-0-0163	INSULATION, VERMICULITE	10 BG	\$ 1.50
314.	5630-09-0252	PIPE INSULATION, 12 X 11/2" & 3"X2"	3 BX	\$ 7.50
315.	5650-09-0069	FRAMES, DOOR	43 EA	\$ 30.00
316.	5800-0-0070-397	RADIO SET, G.E., SN: 0450397	1 SE	\$ 15.00
317.	5800-0-0102	POINTER	1 EA	\$ 25.00
318.	5800-0-0131-475	RADIO, MOTOROLA, SN: 278AFW1475	1 EA	\$ 20.00
319.	5800-0-0178	MONITOR, VIDEO, TELTRON, NO S/N	1 EA	\$ 10.00
320.	5800-0-0202-AMP	RECEIVER/AMPLIFIER	4 EA	\$ 2.50
321.	5800-09-0071-223	RECEIVER, RADIO, MFR. ICOM, SN: 14223	1 EA	\$ 150.00
322.	5810-0-0047-971	PLAYER, VHS, PANASONIC, SN: GTB01971	1 EA	\$ 50.00
323.	5810-0-0080	RECORDER, VIDEO, RCA, SN:	1 EA	\$ 75.00

10/02/00

IOWA FEDERAL SURPLUS PROPERTY CATALOG

ITEM NO.	INVENTORY NUMBER	DESCRIPTION	QTY ON HAND	UNIT SERVICE CHARGE
		648370220		
324.	5810-0-0186-2Y1	TAPE PLAYER, TOTE VISION, SN: Y40601892Y1	1 EA	\$ 25.00
325.	5810-0-0186-6Y1	TAPE PLAYER, TOTE VISION, SN: Y40601496Y1	1 EA	\$ 25.00
326.	5810-0-0186-74M	TAPE PLAYER, TOTE VISION, SN: 90705574M	1 EA	\$ 25.00
327.	5810-09-0202-89M	VIDEO CASSETTE RECORDER, TOTE VISION, SN: 90702889M	1 EA	\$ 15.00
328.	5830-0-0134-300	FAXPHONE, AT&T, SN: ON386800-300	1 EA	\$ 25.00
329.	5830-0-0175-025	FAX MACHINE, SHARP, SN: 00102025	1 EA	\$ 15.00
330.	5830-0-0175-0XT	FAX MACHINE, SHARP, SN: 8210660XT	1 EA	\$ 20.00
331.	5840-0-0106-010	RADIO, 2-WAY, PORTABLE, MOTOROLA, SN: 278AKE2010	1 EA	\$ 10.00
332.	5840-0-0106-059	RADIO, 2-WAY, PORTABLE, MOTOROLA, SN: 720ANQ0059	1 EA	\$ 10.00
333.	5840-0-0106-060	RADIO, 2-WAY, PORTABLE, MOTOROLA, SN: 720ANQ0060	1 EA	\$ 10.00
334.	5840-0-0106-061	RADIO, 2-WAY, PORTABLE, MOTOROLA, SN: 720ANQ0061	1 EA	\$ 10.00
335.	5840-0-0106-062	RADIO, 2-WAY, PORTABLE, MOTOROLA, SN: 720ANQ0062	1 EA	\$ 10.00
336.	5840-0-0106-063	RADIO, 2-WAY, PORTABLE, MOTOROLA, SN: 720ANQ0063	1 EA	\$ 10.00
337.	5840-0-0106-064	RADIO, 2-WAY, PORTABLE, MOTOROLA, SN: 720ANQ0064	1 EA	\$ 10.00
338.	5840-0-0106-065	RADIO, 2-WAY, PORTABLE, MOTOROLA, SN: 720ANQ0065	1 EA	\$ 10.00
339.	5840-0-0106-066	RADIO, 2-WAY, PORTABLE, MOTOROLA, SN: 720ANQ0066	1 EA	\$ 10.00
340.	5840-0-0106-067	RADIO, 2-WAY, PORTABLE, MOTOROLA, SN: 720ANQ0067	1 EA	\$ 10.00
341.	5840-0-0106-068	RADIO, 2-WAY, PORTABLE, MOTOROLA, SN: 720ANQ0068	1 EA	\$ 10.00
342.	5840-0-0106-069	RADIO, 2-WAY, PORTABLE, MOTOROLA, SN: 720ANQ0069	1 EA	\$ 10.00
343.	5840-0-0106-070	RADIO, 2-WAY, PORTABLE, MOTOROLA, SN: 720ANQ0070	1 EA	\$ 10.00

10/02/00

IOWA FEDERAL SURPLUS PROPERTY CATALOG

ITEM NO.	INVENTORY NUMBER	DESCRIPTION	QTY ON HAND	UNIT SERVICE CHARGE
344.	5840-0-0106-071	RADIO, 2-WAY, PORTABLE, MOTOROLA, SN: 720ANQ0071	1 EA	\$ 10.00
345.	5840-0-0106-072	RADIO, 2-WAY, PORTABLE, MOTOROLA, SN: 720ANQ0072	1 EA	\$ 10.00
346.	5840-0-0106-073	RADIO, 2-WAY, PORTABLE, MOTOROLA, SN: 720ANQ0073	1 EA	\$ 10.00
347.	5840-0-0106-074	RADIO, 2-WAY, PORTABLE, MOTOROLA, SN: 720ANQ0074	1 EA	\$ 10.00
348.	5840-0-0106-097	RADIO, 2-WAY, PORTABLE, MOTOROLA, SN: 411AJQ0097	1 EA	\$ 10.00
349.	5840-0-0106-098	RADIO, 2-WAY, PORTABLE, MOTOROLA, SN: 411AJQ0098	1 EA	\$ 10.00
350.	5840-0-0106-099	RADIO, 2-WAY, PORTABLE, MOTOROLA, SN: 411AJQ0099	1 EA	\$ 10.00
351.	5840-0-0106-100	RADIO, 2-WAY, PORTABLE, MOTOROLA, SN: 411AJQ0100	1 EA	\$ 10.00
352.	5840-0-0106-153	RADIO, 2-WAY, PORTABLE, MOTOROLA, SN: 278AJE1153	1 EA	\$ 10.00
353.	5840-0-0106-196	RADIO, 2-WAY, PORTABLE, MOTOROLA, SN: 411AJL0196	1 EA	\$ 10.00
354.	5840-0-0106-198	RADIO, 2-WAY, PORTABLE, MOTOROLA, SN: 411AJL0198	1 EA	\$ 10.00
355.	5840-0-0106-200	RADIO, 2-WAY, PORTABLE, MOTOROLA, SN: 411AJ50200	1 EA	\$ 10.00
356.	5840-0-0106-201	RADIO, 2-WAY, PORTABLE, MOTOROLA, SN: 411AJ50201	1 EA	\$ 10.00
357.	5840-0-0106-240	RADIO, 2-WAY, PORTABLE, MOTOROLA, SN: 278AKW0240	1 EA	\$ 10.00
358.	5840-0-0106-307	RADIO, 2-WAY, PORTABLE, MOTOROLA, SN: 278AK50307	1 EA	\$ 10.00
359.	5840-0-0106-308	RADIO, 2-WAY, PORTABLE, MOTOROLA, SN: 278AK50308	1 EA	\$ 10.00
360.	5840-0-0106-309	RADIO, 2-WAY, PORTABLE, MOTOROLA, SN: 278AK50309	1 EA	\$ 10.00
361.	5840-0-0106-310	RADIO, 2-WAY, PORTABLE, MOTOROLA, SN: 278AK50310	1 EA	\$ 10.00
362.	5840-0-0106-326	RADIO, 2-WAY, PORTABLE, MOTOROLA, SN: 278AKE0326	1 EA	\$ 10.00
363.	5840-0-0106-327	RADIO, 2-WAY, PORTABLE,	1 EA	\$ 10.00

10/02/00

IOWA FEDERAL SURPLUS PROPERTY CATALOG

ITEM NO.	INVENTORY NUMBER	DESCRIPTION	QTY ON HAND	UNIT SERVICE CHARGE
		MOTOROLA, SN: 278AKE0327		
364.	5840-0-0106-331	RADIO, 2-WAY, PORTABLE, MOTOROLA, SN: 278AKE0331	1 EA	\$ 10.00
365.	5840-0-0106-333	RADIO, 2-WAY, PORTABLE, MOTOROLA, SN: 278AKE0333	1 EA	\$ 10.00
366.	5840-0-0106-474	RADIO, 2-WAY, PORTABLE, MOTOROLA, SN: 278AFW0474	1 EA	\$ 10.00
367.	5840-0-0106-525	RADIO, 2-WAY, PORTABLE, MOTOROLA, SN: 411AJ51525	1 EA	\$ 10.00
368.	5840-0-0106-699	RADIO, 2-WAY, PORTABLE, MOTOROLA, SN: 278AGJ0699	1 EA	\$ 10.00
369.	5840-0-0106-797	RADIO, 2-WAY, PORTABLE, MOTOROLA, SN: 411AJ50797	1 EA	\$ 10.00
370.	5840-0-0106-798	RADIO, 2-WAY, PORTABLE, MOTOROLA, SN: 411AJ50798	1 EA	\$ 10.00
371.	5840-0-0106-799	RADIO, 2-WAY, PORTABLE, MOTOROLA, SN: 411AJ50799	1 EA	\$ 10.00
372.	5840-0-0106-800	RADIO, 2-WAY, PORTABLE, MOTOROLA, SN: 411AJ50800	1 EA	\$ 10.00
373.	5840-0-0106-801	RADIO, 2-WAY, PORTABLE, MOTOROLA, SN: 411AJ50801	1 EA	\$ 10.00
374.	5840-0-0106-802	RADIO, 2-WAY, PORTABLE, MOTOROLA, SN: 411AJ50802	1 EA	\$ 10.00
375.	5840-0-0106-804	RADIO, 2-WAY, PORTABLE, MOTOROLA, SN: 411AJ50804	1 EA	\$ 10.00
376.	5840-0-0106-805	RADIO, 2-WAY, PORTABLE, MOTOROLA, SN: 411AJ50805	1 EA	\$ 10.00
377.	5840-0-0106-806	RADIO, 2-WAY, PORTABLE, MOTOROLA, SN: 411AJ50806	1 EA	\$ 10.00
378.	5840-0-0106-807	RADIO, 2-WAY, PORTABLE, MOTOROLA, SN: 411AJ50807	1 EA	\$ 10.00
379.	5840-0-0106-808	RADIO, 2-WAY, PORTABLE, MOTOROLA, SN: 411AJ50808	1 EA	\$ 10.00
380.	5840-0-0106-809	RADIO, 2-WAY, PORTABLE, MOTOROLA, SN: 411AJ50809	1 EA	\$ 10.00
381.	5840-0-0106-810	RADIO, 2-WAY, PORTABLE, MOTOROLA, SN: 411AJ50810	1 EA	\$ 10.00
382.	5840-0-0106-811	RADIO, 2-WAY, PORTABLE, MOTOROLA, SN: 411AJ50811	1 EA	\$ 10.00

10/02/00

IOWA FEDERAL SURPLUS PROPERTY CATALOG

ITEM NO.	INVENTORY NUMBER	DESCRIPTION	QTY ON HAND	UNIT SERVICE CHARGE
383.	5840-0-0107-075	RADIO, MOTOROLA, MAXAR, SN: 475FMQ1075	1 EA	\$ 10.00
384.	5840-0-0107-34C	RADIO, PORTABLE, 2-WAY, MOTOROLA, SN: NLN8834C	1 EA	\$ 10.00
385.	5840-0-0107-664	RADIO, MOTOROLA, MAXAR, SN: 475FMQ664	1 EA	\$ 10.00
386.	5840-0-0107-778	RADIO, MOTOROLA, MAXAR, SN: 475FMQ778	1 EA	\$ 10.00
387.	5840-0-0107-779	RADIO, MOTOROLA, MAXAR, SN: 475FMQ779	1 EA	\$ 10.00
388.	5840-0-0107-797	RADIO, MOTOROLA, MAXAR, SN: 240FFC1797	1 EA	\$ 10.00
389.	5900-0-0013	BUTTON, START-STOP	1 EA	\$ 2.00
390.	5900-0-0047-OIL	OIL TIGHT LAY IN WIRE WAY	1 EA	\$ 5.00
391.	5900-0-0048-EBOX	BOX, ELECTRICAL	5 EA	\$ 1.00
392.	5900-0-0074	GROUND STRAP	1 EA	\$ 5.00
393.	5900-0-0155-WIR	COPPER WIRE	32 EA	\$ 5.00
394.	5900-0-0164	CONNECTORS, ELECTRICAL	9 EA	\$ 1.00
395.	5900-0-101	COVER, ELECTRICAL	1 EA	\$.50
396.	5900-08-0247	ELECTRODE SEALER POLARIS	1 BG	\$ 5.00
397.	5905-0-0189-FUS	FUSES, MISC SIZES	35 PG	\$.05
398.	5910-0-0047-SWIT	SWITCH, SAFETY	1 EA	\$ 5.00
399.	5910-0-0189-TOG	TOGGLE SWITCH, SPDT W/N	1 PG	\$.25
400.	5910-0-0195	SWITCH BOX	3 EA	\$ 20.00
401.	5910-0-0206	BREAKER	1 EA	\$ 7.50
402.	5920-0-0047	CONNECTOR, SQUEEZE-TYPE	1 EA	\$ 1.00
403.	5935-0-0101	SPEAKER	1 EA	\$.50
404.	5940-0-0047-CDT	CONDUIT, 2" LR	1 EA	\$ 1.00
405.	5940-0-0047-CON	CONNECTOR, IRON BOX, 2" SMALL	1 EA	\$ 1.00
406.	5940-0-0127	CONDUIT, METAL, RIDGID	76 LG	\$ 3.00
407.	5965-0-0101	ELBOW, 4" BUSS	2 EA	\$ 1.00
408.	5965-0-0101-COV	COVERS, BUSS, 2-3 INCH	1 BX	\$ 5.00
409.	5965-09-0175-TAP	TAPE, INSULATION	2 RO	\$.50
410.	5965-09-0196	BOXES, WIRE, ELECTRICAL	2 EA	\$ 5.00
411.	6100-0-0085-516	GENERATOR, DIESEL, 5 KW, HOLLINGSWORTH, MDL MEP-002A, 120/240V 1 PH, 120/208 3PH, 189 HRS, SN: KZ15516	1 EA	\$ 950.00
412.	6100-0-0093	MULTIPLE OUTLET STRIP	1 EA	\$ 5.00

10/02/00

IOWA FEDERAL SURPLUS PROPERTY CATALOG

ITEM NO.	INVENTORY NUMBER	DESCRIPTION	QTY ON HAND	UNIT SERVICE CHARGE
414.	6100-0-0189	WIRE, DUPLEX THERMOCOUPLE	1 RO	\$ 1.00
415.	6100-0-0202-OUT	OUTLET, EXTENSION	1 EA	\$ 7.50
416.	6100-09-0069	POWER CORDS	22 EA	\$ 1.00
417.	6100-09-0095	WIRE, 20MM OR .008" BRASS	40 EA	\$ 25.00
418.	6100-09-0159	BATTERIES, D-CELL	72 PG	\$ 5.00
419.	6105-0-0161-MOT	MOTOR, ELECTRIC, 1/2 HP,	2 EA	\$ 40.00
420.	6105-0-0164	MOTOR, 1/15 HP	3 EA	\$ 7.50
421.	6115-09-0121-325	GENERATOR SET, 5 KW, ONAN, MDL MEP-0179, 120/208V 3 PH. 120/208V 1-3 PH, 60 HZ, SN: EA68 -8325 (DOES NOT WORK)	1 EA	\$ 750.00
422.	6125-05-0066	GENERATOR SET, 200 KW, 240/480 V, 3 PH, MFR. CATERPILLAR, MDL D3-53C, DIESEL ENGINE, SN: 210RH630	1 EA	\$ 8,500.00
423.	6135-0-0181	BATTERY, LANTERN, 6V, 12/BOX	19 BX	\$ 5.00
424.	6135-09-0207	BATTERY, 9V, EVEREADY, 24	3 EA	\$ 1.00
425.	6140-08-0200-79E	CHARGER, BATTERY, ASTRA PRODUCTS, MDL PP2926D-U, SN: 279E	1 EA	\$ 250.00
426.	6140-09-0018-555	CHARGER, BATTERY, 1968, C & D BATTERIES, SN: 2D38-12555	1 EA	\$ 150.00
427.	6140-09-0018-880	CHARGER, BATTERY, 1985, HOBART BROTHERS, SN: 485CS19880	1 EA	\$ 150.00
428.	6145-0-0080	EXTENSION CORD	4 EA	\$ 15.00
429.	6145-0-0181	WIRE, ELECTRIC	18 RO	\$ 7.50
430.	6145-09-0190	WIRE	64 RO	\$ 5.00
431.	6145-09-0207-COA	WIRE, COAX, ALPHA, 985 8C	1 RO	\$ 10.00
432.	6145-09-0207-IRR	WIRE, IRRAD #1	2 RO	\$ 7.50
433.	6145-09-0207-SHL	WIRE, SHIELDED, 2 CONDUCTOR	1 RO	\$ 5.00
434.	6145-09-0207-STR	WIRE, STRANDED, IRRAD #1	1 RO	\$ 10.00
435.	6145-09-0224-CAB	CABLE	22 RO	\$ 15.00
436.	6145-09-0252-WIR	WIRE, MISC.	1 RO	\$ 10.00
437.	6200-0-0047	LIGHT COVER, PLASTIC	1 EA	\$.50
438.	6205-09-0159	LIGHTING FIXTURES	9 EA	\$ 5.00
439.	6210-08-0162	LAMP, INCANDESCENT	6 EA	\$ 1.00
440.	6215-0-0101	BULBS, LIGHT, SAFETY	8 EA	\$ 1.00
441.	6220-07-0205	LAMP, DESK	3 Ea	\$ 5.00
442.	6240-0-0202	FLASH LIGHTS	72 EA	\$ 1.00

10/02/00

IOWA FEDERAL SURPLUS PROPERTY CATALOG

ITEM NO.	INVENTORY NUMBER	DESCRIPTION	QTY ON HAND	UNIT SERVICE CHARGE
443.	6500-0-0017-150	SCOPES, OLYMPUS, SN: MED8150	1 EA	\$ 175.00
444.	6500-0-0017-270	SCOPES, CLACOM, SN: MED5270	1 EA	\$ 175.00
445.	6500-0-0075-TROU	TROUSERS, PNEUMATIC	3 EA	\$ 25.00
446.	6500-0-0173	SPLINT, ARM	30 EA	\$ 5.00
447.	6500-0-0176	WRAPPER, STERILIZATION	4 PG	\$ 7.50
448.	6500-0-0176-TAP	MOLESKIN TAPE, SURGICAL, ADHESIVE	27 EA	\$ 3.00
449.	6500-0-0189-VIA	VIAL, PLASTIC, 5 DRAM	8 BX	\$ 2.00
450.	6500-0-0197	SINK UNIT, SURGICAL	15 EA	\$ 10.00
451.	6500-08-0105	SURGICAL INSTRUMENT CABINET	1 EA	\$ 75.00
452.	6500-08-0162	LARYNGOSCOPE, RUSCH	2 EA	\$ 40.00
453.	6500-09-0073-973	BATH, THERAPEUTIC, ARJO, MDL 218181 W/2 CHAIR LIFTS, ACQ 5- 85, SN: 231973	1 EA	\$ 250.00
454.	6500-09-0075-COM	CHAIR, COMMODE	1 EA	\$ 10.00
455.	6500-09-0093	CABINET, CASSETTE-FI	2 EA	\$ 40.00
456.	6500-09-0094-CAB	CABINET, MEDICINE	1 EA	\$ 150.00
457.	6500-09-0198	TILT TABLE, TRI WG, MDL 620, ACQ 1/80, ELEC	1 EA	\$ 150.00
458.	6500-09-0230	CABINET, SURGICAL INSTRUMENT	3 EA	\$ 35.00
459.	6510	MEDICAL SUPPLIES (EXPENDABLE) COTTON TIP APPLICATOR; RUBBER STOPPER;	218 Ea	\$.10
460.	6530	FORCEPS	775 Ea	\$ 1.00
461.	6550-09-0075-HOL	HOLDER, IV, FLOOR MDL W/WHEELS	1 EA	\$ 20.00
462.	6570-0-0194-6A8	BEDS, HOSPITAL, ELECTRIC, HILLROM, SN: 110558E6A8	1 EA	\$ 350.00
463.	6580-0-0181-GOW	GOWN, SURGICAL, XLG, 10/PKG	8 PG	\$ 10.00
464.	6600-0-0050	PRESSURE COOKERS (NOT FOR FOOD)	1 EA	\$ 25.00
465.	6600-0-0051-179	CLEANER, ULTRASONIC, DELTA SONICS, SN: 14179	1 EA	\$ 35.00
466.	6600-0-0075-077	CENTRIFUGE, SN: 3200077	1 EA	\$ 50.00
467.	6600-0-0093	CABINET, DESICCATING	4 EA	\$ 15.00
468.	6600-0-0100	OVEN VACUUM CHANGER W/PUMP, STAND	1 EA	\$ 30.00
469.	6600-0-0101	BOTTOMS, LAB DISH	1 LT	\$ 2.00
470.	6600-0-0102-367	OSCILLOSCOPE, TEKTRONIX, SN: 516367	1 EA	\$ 10.00
471.	6600-0-0139-TRE	STEEL TREE, (TO HANG 10 WEIGHTS)	1 EA	\$ 5.00

10/02/00

IOWA FEDERAL SURPLUS PROPERTY CATALOG

ITEM NO.	INVENTORY NUMBER	DESCRIPTION	QTY ON HAND	UNIT SERVICE CHARGE
		= 50 LBS)		
472.	6600-0-0143-824	TEST SET, AUDIO, NORTHEAST ELECTRONICS, SN 7824	1 EA	\$ 10.00
473.	6600-0-0155-359	FURNACE W/CONTROLLER, HONEYWELL, SN: 359	1 EA	\$ 50.00
474.	6600-0-0155-CON	CONTROLLER, LIGHT	1 EA	\$ 5.00
475.	6600-0-0164	MANOMETER	1 EA	\$ 5.00
476.	6600-0-0183-HEA	HEATER, INFRARED W/PWR SUP	1 EA	\$ 15.00
477.	6600-0-0189-ASP	ASPIRATOR, WATER, FISHER	2 EA	\$ 2.00
478.	6600-0-0189-FSK	FLASK, DEWARD 1000 ML CAP	1 EA	\$ 10.00
479.	6600-0-0189-HOT	HOT PLATE, MAGNETIC ST	2 EA	\$ 20.00
480.	6600-0-0189-PYR	PYREX PLATE	1 BG	\$ 2.00
481.	6600-0-0189-SPR	STOPPERS, RUBBER	71 EA	\$.05
482.	6600-0-0189-TAP	TAPE, HEATING, 1" X 2 FT WA	5 EA	\$ 2.00
483.	6600-0-0189-TEE	TEE, POLYPROPYLENE CONN	11 EA	\$.05
484.	6600-0-0195-756	DRYER SHELF, VAC, PENNWALT STOKES, MDL 338-0-3, SN: P7756	1 EA	\$ 500.00
485.	6600-0-0195-SINK	SINK, LAB, 4' X 2'	1 EA	\$ 40.00
486.	6600-07-0163-SJR	JAR, SAMPLING W/LIDS, 1.5"D X 1" TALL	3 Bx	\$ 2.50
487.	6600-08-0236-LIT	LIGHT, OPTICAL	8 EA	\$ 1.00
488.	6600-09-0069-GLS	GLASSWARE, LAB	1 BX	\$ 40.00
489.	6600-09-0089-OR4	CLEANER, ULTRASONIC, BRANSONIC, SN: B-8200R-4	1 EA	\$ 35.00
490.	6600-09-0110-512	ROTOR, LAB, BENCH, SMALL, MFR. GLAS-COL, SN: 4512	1 EA	\$ 50.00
491.	6600-09-0207-POL	TUBING, POLYETHYLENE	1 RO	\$ 5.00
492.	6600-09-0230	NURSE DESK	20 EA	\$ 80.00
493.	6600-09-0230-BED	TABLE, BEDSIDE CABINET	9 EA	\$ 15.00
494.	6615-0-0048-837	OSCILLOSCOPE, DUAL TRACE, TEKTRONIX, SN:B012837	1 EA	\$ 25.00
495.	6625-08-0235-801	CENTRIFUGE, DAMON, MDL. HNS11, SN: 2365801	1 EA	\$ 50.00
496.	6630-0-0183	STOPWATCH	1 EA	\$ 5.00
497.	6640-0-0183	PIPET, TRANSFER	1 LT	\$ 5.00
498.	6640-0-0189-FSK	FLASK, PYREX, 125 ML	4 EA	\$ 5.00
499.	6640-09-0207-BAL	BALL JOINT, PYREX, 18/9	4 EA	\$.25
500.	6645-08-0103-PAN	PAN, STAINLESS STEEL	2 EA	\$ 2.00
501.	6650-0-0134	SCALE, WEIGHING	1 EA	\$ 25.00

10/02/00

IOWA FEDERAL SURPLUS PROPERTY CATALOG

ITEM NO.	INVENTORY NUMBER	DESCRIPTION	QTY ON HAND	UNIT SERVICE CHARGE
502.	6650-0-0139	SCALES, BANANA	4 EA	\$ 10.00
503.	6650-0-0179-370	SCALE PIT, 6250#, FAIRBANKS-MORSE, SN: G385370	1 EA	\$ 500.00
504.	6650-0-0181	SCALE, HANGING TYPE, 200 LB CAP	2 EA	\$ 20.00
505.	6650-09-0073-723	SCALE, TRONIX SLING BED, MDL 2001-S, ACQ 9/94, SN: 14723	1 EA	\$ 150.00
506.	6650-09-0191	SCALE, PORTABLE, 1000 LB CAP, FLAT PLATE	1 EA	\$ 40.00
507.	6665-09-0001-484	INDICATOR, COMBUSTABLE, GAS TECH, SN:F2484	1 EA	\$ 150.00
508.	6665-09-0001-493	INDICATOR, COMBUSTABLE, GAS TECH, SN:F2493	1 EA	\$ 150.00
509.	6665-09-0001-645	INDICATOR, COMBUSTABLE, GAS TECH, SN:F2645	1 EA	\$ 150.00
510.	6665-09-0001-653	INDICATOR, COMBUSTABLE, GAS TECH, SN:F2653	1 EA	\$ 150.00
511.	6670-0-0046	DRAFTING EQUIPMENT	1 SE	\$ 100.00
512.	6700-0-0102	MONITOR, SECURITY, MFR. PELCO	1 EA	\$ 150.00
513.	6700-0-0154-044	TELEVISION, BIG SCREEN, ELECTRONIC, SN: 60090044	1 EA	\$ 250.00
514.	6700-07-0132-DEV	DEVELOPER, D-76 KODAK & A & B LIQUID R	6 Bx	\$ 5.00
515.	6700-08-0236-BRU	BRUSH, STATIC	1 EA	\$.50
516.	6700-09-0207	PAPER, PROFESSIONAL DKT	1 BX	\$ 7.50
517.	6700-09-0207-FIL	FILTER, WATER, CARTRIDGE	12 TU	\$ 1.00
518.	6700-09-0207-FLM	FILM, 2556 ORTHO KODALI	2 BX	\$ 1.00
519.	6700-09-0224	MISC CAMERA PARTS	1 LT	\$ 15.00
520.	6705-09-0202	CAMERA, 35MM, CANON	1 EA	\$ 5.00
521.	6705-09-0215-VIV	CAMERA, VIVITAR, 35MM W/LENSE (POINT & SHOOT)	1 EA	\$ 10.00
522.	6710-09-0254	CAMERA, VIDEO, JVC, MDL. GZ-55U, SN: NONE	1 EA	\$ 75.00
523.	6710-09-0254-297	CAMERA, VIDEO, JVC, MDL. GZ-55U, SN: 09951297	1 EA	\$ 75.00
524.	6710-09-0254-313	CAMERA, VIDEO, JVC, MDL. GZ-55U, SN: 09951313	1 EA	\$ 75.00
525.	6715-0-0177-15C	PROJECTORS, OVERHEAD, SN: 1015C	1 EA	\$ 25.00
526.	6715-0-0177-67B	PROJECTORS, OVERHEAD, SN: 367B	1 EA	\$ 25.00
527.	6715-0-0177-75B	PROJECTORS, OVERHEAD, SN: 1375B	1 EA	\$ 25.00

10/02/00

IOWA FEDERAL SURPLUS PROPERTY CATALOG

ITEM NO.	INVENTORY NUMBER	DESCRIPTION	QTY ON HAND	UNIT SERVICE CHARGE
528.	6715-0-0177-98C	PROJECTORS, OVERHEAD, SN: 198C	1 EA	\$ 25.00
529.	6715-0-0200	PROJECTOR, KALART VICTOR	2 EA	\$ 25.00
530.	6715-0-0206-076	PROJECTOR, OVERHEAD, 3M, SN: 566076	1 EA	\$ 20.00
531.	6730-0-0126	PROJECTION SCREEN	1 EA	\$ 20.00
532.	6750-0-0175-091	MICROFICHE, DATAMATE, SN: 0221091	1 EA	\$ 10.00
533.	6750-0-0175-697	MICROFICHE, MICRON 750, SN: 29697	1 EA	\$ 10.00
534.	6800-0-0189-DEV	DEVELOPER, FINE LINE & AGENT, HYPO CLEARING KODAK	3 PG	\$ 1.00
535.	6800-09-0207-DEV	DEVELOPER, D-19, 1-GAL	10 PG	\$ 1.00
536.	6815-0-0181	INSECT REPELLANT, 12/BOX	37 BX	\$ 5.00
537.	7000-0-0045-INK	CARTRIDGE, INK, BLACK	18 EA	\$ 5.00
538.	7000-0-0072-004	COMPUTER, MICRON, SN: 899373- 0004	1 EA	\$ 25.00
539.	7000-0-0093-CABL	CABLE, LAN	1 BX	\$ 5.00
540.	7000-0-0096-CHO	COMPUTER, DELL, W/MONITOR, SN: 2GCHO	1 EA	\$ 100.00
541.	7000-0-0102-CAS	CASES, COMPUTER	4 EA	\$ 10.00
542.	7000-0-0105-CAS	CASE, COMPUTER	11 EA	\$ 10.00
543.	7000-0-0106-849	STYLEWRITER, APPLE, SN: ABG87849	1 EA	\$ 50.00
544.	7000-0-0106-SOF	MISC SOFTWARE	3 EA	\$ 10.00
545.	7000-0-0154-151	BACKUP, DATA SHIELD, SN: 87240151	1 EA	\$ 35.00
546.	7000-0-0155-025	PLOTTER GRAPHICS, CALCOMP, SN: 1025	1 EA	\$ 150.00
547.	7000-0-0156	VIDEO ADAPTER, AT&T VISTIUM 1300 DESKTOP, SN: 15-12345821	1 EA	\$ 100.00
548.	7000-0-0175-0008	CPU, EVEREX, SN: C2Q44520008	1 EA	\$ 10.00
549.	7000-0-0175-0051	CPU, EVEREX, SN: C2Q-53120051	1 EA	\$ 10.00
550.	7000-0-0175-0064	CPU, EVEREX, SN: C2Q 43220064	1 EA	\$ 10.00
551.	7000-0-0175-008	CPU, PARCORD, SN: MEN0650008	1 EA	\$ 10.00
552.	7000-0-0175-012	CPU, EVEREX, SN: C2Q-44220012	1 EA	\$ 10.00
553.	7000-0-0175-016	CPU, EVEREX, SN: C2Q-44320016	1 EA	\$ 10.00
554.	7000-0-0175-032	CPU, EVEREX, SN: C2Q44320032	1 EA	\$ 10.00
555.	7000-0-0175-037	KEYBOARDS, SN: 82351037, ATT	1 EA	\$ 5.00
556.	7000-0-0175-040	CPU, EVEREX, SN: C2Q44220040	1 EA	\$ 10.00
557.	7000-0-0175-051	CPU, EVEREX, SN: C2Q43220051	1 EA	\$ 10.00

10/02/00

IOWA FEDERAL SURPLUS PROPERTY CATALOG

ITEM NO.	INVENTORY NUMBER	DESCRIPTION	QTY ON HAND	UNIT SERVICE CHARGE
558.	7000-0-0175-052	CPU, EVEREX, SN: CZQ43220052	1 EA	\$ 10.00
559.	7000-0-0175-053	CPU, EVEREX, SN: CZQ-4322-0053	1 EA	\$ 10.00
560.	7000-0-0175-059	CPU, EVEREX, SN: C2Q-43220059	1 EA	\$ 10.00
561.	7000-0-0175-071	CPU, EVEREX, SN: C2Q-43220071	1 EA	\$ 10.00
562.	7000-0-0175-073	CPU, EVEREX, SN: CZQ44520073	1 EA	\$ 10.00
563.	7000-0-0175-078	CPU, EVEREX, SN: C2Q-43220078	1 EA	\$ 10.00
564.	7000-0-0175-079	CPU, EVEREX, SN: CZQ-43020079	1 EA	\$ 10.00
565.	7000-0-0175-08	CPU, EVEREX, SN: CWQ-43220008	1 EA	\$ 10.00
566.	7000-0-0175-088	CPU, EVEREX, SN: C2Q43020088	1 EA	\$ 10.00
567.	7000-0-0175-091	MICROFICHE, DATAMATE, SN: 0221091	1 EA	\$ 10.00
568.	7000-0-0175-0928	KEYBOARD, AT&T, SN: 82350928	1 EA	\$ 10.00
569.	7000-0-0175-093	CPU, EVEREX, SN: C2Q-43020093	1 EA	\$ 10.00
570.	7000-0-0175-1040	KEYBOARD, AT&T, SN: 82351040	1 EA	\$ 5.00
571.	7000-0-0175-106	KEYBOARDS, SN: 07480106, GATEWAY	1 EA	\$ 5.00
572.	7000-0-0175-108	CPU, EVEREX, SN: C2Q-43020108	1 EA	\$ 10.00
573.	7000-0-0175-110	CPU, EVEREX, C20-43020110	1 EA	\$ 10.00
574.	7000-0-0175-122	CPU, EVEREX, SN: CZQ43020122	1 EA	\$ 10.00
575.	7000-0-0175-142	CPU, EVEREX, SN: CZQ43020142	1 EA	\$ 10.00
576.	7000-0-0175-157	CPU, EVEREX, SN: C2Q-43020157	1 EA	\$ 10.00
577.	7000-0-0175-161	KEYBOARDS, SN: 28217161, UMB TECH	1 EA	\$ 5.00
578.	7000-0-0175-172	CPU, EVEREX, SN: C2Q-43020175	1 EA	\$ 10.00
579.	7000-0-0175-174	KEYBOARDS, SN: B1643174	1 EA	\$ 5.00
580.	7000-0-0175-194	CPU, EVEREX, SN: C2Q43020194	1 EA	\$ 10.00
581.	7000-0-0175-201	CPU, EVEREX, SN: CZQ-43020201	1 EA	\$ 10.00
582.	7000-0-0175-204	CPU, EVEREX, SN: C2Q43020204	1 EA	\$ 10.00
583.	7000-0-0175-205	CPU, EVEREX, SN: C2Q-43020205	1 EA	\$ 10.00
584.	7000-0-0175-210	CPU, AST, SN: TWA1110210	1 EA	\$ 10.00
585.	7000-0-0175-212	CPU, EVEREX, SN: C2Q 43020212	1 EA	\$ 10.00
586.	7000-0-0175-225	KEYBOARDS, SN: K6311715225	1 EA	\$ 5.00
587.	7000-0-0175-258	CPU, EVEREX, SN: JQR53020258	1 EA	\$ 10.00
588.	7000-0-0175-315	KEYBOARD, SN: 89017315	1 EA	\$ 5.00
589.	7000-0-0175-326	CPU, EVEREX, SN: JQR 52200326	1 EA	\$ 10.00
590.	7000-0-0175-329	CPU, ACT, SN: 93102510329	1 EA	\$ 10.00
591.	7000-0-0175-356	KEYBOARD, MAXI-TOUCH, SN: 01028356	1 EA	\$ 5.00
592.	7000-0-0175-361	PRINTER, LASER JET, HEWLETT PACKARD, SN: 2731J22361	1 EA	\$ 15.00

10/02/00

IOWA FEDERAL SURPLUS PROPERTY CATALOG

ITEM NO.	INVENTORY NUMBER	DESCRIPTION	QTY ON HAND	UNIT SERVICE CHARGE
593.	7000-0-0175-415	PRINTER, BROTHER, SN: J49308415	1 EA	\$ 10.00
594.	7000-0-0175-470	CPU, EVEREX, SN: MEE-14950470	1 EA	\$ 10.00
595.	7000-0-0175-508	KEYBOARDS, SN: E1508	1 EA	\$ 5.00
596.	7000-0-0175-563	KEYBOARDS, SN: A3563	1 EA	\$ 5.00
597.	7000-0-0175-564	CPU, EVIS, SN: 36564	1 EA	\$ 10.00
598.	7000-0-0175-601	KEYBOARD, WISE, SN: 84036601	1 EA	\$ 5.00
599.	7000-0-0175-681	KEYBOARDS, SN: B011605681	1 EA	\$ 5.00
600.	7000-0-0175-697	MICROFICHE, MICRON 750, SN: 29697	1 EA	\$ 10.00
601.	7000-0-0175-702	KEYBOARD, DIGITAL, SN: K6311011702	1 EA	\$ 5.00
602.	7000-0-0175-752	KEYBOARD, SN: A0741752	1 EA	\$ 5.00
603.	7000-0-0175-789	KEYBOARD, AT&T, SN: 82350789	1 EA	\$ 10.00
604.	7000-0-0175-815	KEYBOARDS, SN: 42130815	1 EA	\$ 5.00
605.	7000-0-0175-818	CPU, EVEREX, SN: MEE-14220818	1 EA	\$ 10.00
606.	7000-0-0175-822	KEYBOARDS, SN: 82350822	1 EA	\$ 5.00
607.	7000-0-0175-843	KEYBOARD, AT&T, SN: 82353843	1 EA	\$ 5.00
608.	7000-0-0175-846	KEYBOARDS, SN: 82350846, AT&T	1 EA	\$ 5.00
609.	7000-0-0175-855	KEYBOARDS, SN: HJ120A9855	1 EA	\$ 5.00
610.	7000-0-0175-904	KEYBOARD, AT&T, SN: 82350904	1 EA	\$ 5.00
611.	7000-0-0175-905	PRINTER, HEWLETT PACKARD, SN: 2740509905	1 EA	\$ 10.00
612.	7000-0-0175-910	KEYBOARDS, SN: 80802910	1 EA	\$ 5.00
613.	7000-0-0175-914	CPU, AT&T, SN: 15-30646914	1 EA	\$ 10.00
614.	7000-0-0175-915	CPU, AT&T, SN: 15-30646915	1 EA	\$ 10.00
615.	7000-0-0175-916	CPU, AT&T, SN: 15-30646916	1 EA	\$ 10.00
616.	7000-0-0175-917	CPU, AT&T, SN: 15-30646917	1 EA	\$ 10.00
617.	7000-0-0175-918	CPU, AT&T, SN: 15-30646918	1 EA	\$ 10.00
618.	7000-0-0175-919	CPU, AT&T, SN: 15-30646919	1 EA	\$ 10.00
619.	7000-0-0175-920	CPU, AT&T, SN: 15-30646920	1 EA	\$ 10.00
620.	7000-0-0175-922	CPU, AT&T, SN: 15-30646922	1 EA	\$ 10.00
621.	7000-0-0175-923	CPU, AT&T, SN: 15-30646923	1 EA	\$ 10.00
622.	7000-0-0175-925	CPU, AT&T, SN: 15-38646925	1 EA	\$ 10.00
623.	7000-0-0175-926	CPU, AT&T, SN: 15-30646926	1 EA	\$ 10.00
624.	7000-0-0175-928	CPU, AT&T, SN: 15-30646928	1 EA	\$ 10.00
625.	7000-0-0175-935	KEYBOARD, AT&T, SN: 82350935	1 EA	\$ 5.00
626.	7000-0-0175-968	KEYBOARDS, SN: A2631968	1 EA	\$ 5.00
627.	7000-0-0175-BAC	BACK-UP UNIT, EXABYTE	1 EA	\$ 10.00
628.	7000-0-0175-DM2	CPU, DIGITAL, SN: KA509TTDM2	1 EA	\$ 10.00

10/02/00

IOWA FEDERAL SURPLUS PROPERTY CATALOG

ITEM NO.	INVENTORY NUMBER	DESCRIPTION	QTY ON HAND	UNIT SERVICE CHARGE
629.	7000-0-0175-F36	CPU, DIGITAL, SN: KN745PPF36	1 EA	\$ 25.00
630.	7000-0-0175-F37	CPU, DIGITAL, SN: KN745PPF37	1 EA	\$ 25.00
631.	7000-0-0175-F40	CPU, DIGITAL, SN: KN745PPF40	1 EA	\$ 25.00
632.	7000-0-0175-F44	CPU, DIGITAL, SN: KN745PPF44	1 EA	\$ 25.00
633.	7000-0-0175-F45	CPU, DIGITAL, SN: KN745PPF45	1 EA	\$ 25.00
634.	7000-0-0175-F46	CPU, DIGITAL, SN: KN745PPF46	1 EA	\$ 25.00
635.	7000-0-0175-F47	CPU, DIGITAL, SN: KN745PPF47	1 EA	\$ 25.00
636.	7000-0-0175-F48	CPU, DIGITAL, SN: KN745PPF48	1 EA	\$ 25.00
637.	7000-0-0175-F52	CPU, DIGITAL, SN: KN745PPF52	1 EA	\$ 25.00
638.	7000-0-0175-F58	CPU, DIGITAL, SN: KN745PPF58	1 EA	\$ 25.00
639.	7000-0-0175-KEY	KEYBOARDS, NO SERIAL NUMBERS, WANG	52 EA	\$ 5.00
640.	7000-0-0175-MOU	MOUSE, COMPUTER, MISC	34 EA	\$ 1.00
641.	7000-0-0184-ADP	ADAPTER, PC	35 EA	\$ 1.00
642.	7000-0-0184-CBL	CABLE, PRINTER	114 EA	\$ 1.00
643.	7000-0-0184-CHP	CHIPS, MEMORY	1 BX	\$ 50.00
644.	7000-0-0184-DDR	DISK DRIVES	6 EA	\$ 5.00
645.	7000-0-0184-FIL	FILE, DISK	1 EA	\$ 2.00
646.	7000-0-0184-MOD	MODEM	1 EA	\$ 5.00
647.	7000-0-0184-MOU	MOUSE	12 EA	\$ 1.00
648.	7000-0-0184-POW	POWER SUPPLY	1 EA	\$ 2.00
649.	7000-0-0184-ROM	C D ROM	21 EA	\$ 5.00
650.	7000-0-0184-SOF	SOFTWARE, COMPUTER	1 PK	\$ 5.00
651.	7000-0-0184-SPK	SPEAKERS, ONE SET	2 SE	\$ 5.00
652.	7000-0-0184-SWT	SWITCH, DATA, MANUAL, & PARALLEL AUTO SWITCH	4 EA	\$ 2.00
653.	7000-0-0189-HDC	HEAD CLEANER KIT, FLOPPY	2 KT	\$ 1.50
654.	7000-0-0192-222	KEYBOARD, GATEWAY, SN: J8257M0222	1 EA	\$ 5.00
655.	7000-0-0192-453	KEYBOARD, GATEWAY, SN: J8257M0453	1 EA	\$ 5.00
656.	7000-0-0192-CAB	CABLE, PRINTER	20 EA	\$ 1.00
657.	7000-0-0192-DDV	DISK DRIVE	6 EA	\$ 5.00
658.	7000-0-0192-MOU	MOUSE, TRACKBALL	1 EA	\$ 5.00
659.	7000-0-0192-PCB	PATCH CABLE	1 BX	\$ 5.00
660.	7000-0-0192-POW	POWER SUPPLY	3 EA	\$ 5.00
661.	7000-0-0192-SPK	SPEAKERS	12 SE	\$ 5.00
662.	7000-0-0192-SUP	SUPPRESSOR, SURGE	1 EA	\$ 2.00
663.	7000-0-0194-239	SCANNER, LOGITECH, SN: 05239	1 EA	\$ 10.00

10/02/00

IOWA FEDERAL SURPLUS PROPERTY CATALOG

ITEM NO.	INVENTORY NUMBER	DESCRIPTION	QTY ON HAND	UNIT SERVICE CHARGE
664.	7000-0-0194-622	SCANNER, LOGITECH, SN: 05622	1 EA	\$ 10.00
665.	7000-0-0195-0103	SCANNER, BAR CODE W/POWER SUPPLY, INTERMEC CORP, SN: 9570-0047103	1 EA	\$ 20.00
666.	7000-0-0195-428	SCANNER, HEWLETT PACKARD SCANJET 3C, SN: US00158428	1 EA	\$ 15.00
667.	7000-0-0195-758	SCANNER, HEWLETT PACKARD SCANJET PLUS, SN: 2812J46758	1 EA	\$ 15.00
668.	7000-08-0101	MODULES, POWER	2 EA	\$ 5.00
669.	7000-08-0113	STATIC SCREEN FOR MONITOR	1 EA	\$ 5.00
670.	7000-08-0113-KEY	KEYBOARD, MFR. AST, SN: 91331130 & 51040380	1 EA	\$ 2.50
671.	7000-08-0179-331	PROCESSOR WORKSTATION, AST, PREMMIA, SN: USD9011331	1 LT	\$ 75.00
672.	7000-08-0179-KEY	COMPUTER KEYBOARDS	1 EA	\$ 10.00
673.	7000-08-0210-874	MONITOR, DELL ULTRASCAN, MDL 17ESP1728E, SN: 44986A08P874	1 EA	\$ 25.00
674.	7000-08-0210-MOU	COMPUTER MOUSE, MICROSOFT	1 EA	\$ 5.00
675.	7000-09-0042-SWI	SWITCH, COMPUTER, A/B	1 EA	\$ 5.00
676.	7000-09-0067-MOD	MODEM	1 EA	\$ 15.00
677.	7000-09-0173-QK1	PRINTER, HEWLETT PACKARD, LASER JET IIP, SN: 3049J00QK1	1 EA	\$ 25.00
678.	7000-09-0175-MOD	MODEMS	3 EA	\$ 15.00
679.	7000-09-0188-288	FEEDER, MICROIX, SN: S684901288	1 EA	\$ 30.00
680.	7005-0-0045-600	MONITOR, SN: U4302A00600	1 EA	\$ 15.00
681.	7005-0-0101-842	MONITOR, MICRON, SN: 7442842	1 EA	\$ 15.00
682.	7005-0-0154-207	PRINTER, SLIMWRITER, SN: 42500207	1 EA	\$ 10.00
683.	7005-0-0154-570	PRINTER, CANON, SN: PDA74570	1 EA	\$ 10.00
684.	7005-0-0155-MOU	MOUSES, MISC.	10 EA	\$ 2.00
685.	7005-0-0156-890	MONITOR, 17" SONY, SN: 516890	1 EA	\$ 50.00
686.	7005-0-0164-858	PRINTER, HEWLETT PACKARD, 1200C, SN: USC5100858	1 EA	\$ 25.00
687.	7005-0-0175-0003	CPU, AST, SN: 500770-003	1 EA	\$ 10.00
688.	7005-0-0175-001	PRINTER, PANASONIC, SN: P1123-001	1 EA	\$ 10.00
689.	7005-0-0175-003	PRINTER, BROTHER, SN: K49390003	1 EA	\$ 10.00
690.	7005-0-0175-006	MONITOR, DIGITAL, SN: TM31Z5006	1 EA	\$ 10.00
691.	7005-0-0175-027	COMPUTER, TRICORD, SN:	1 EA	\$ 100.00

10/02/00

IOWA FEDERAL SURPLUS PROPERTY CATALOG

ITEM NO.	INVENTORY NUMBER	DESCRIPTION	QTY ON HAND	UNIT SERVICE CHARGE
001AL01027				
692.	7005-0-0175-0275	MONITOR, MAGNAVOX, SN: 57880275	1 EA	\$ 10.00
693.	7005-0-0175-029	PRINTER, DESK, SN: 9101029	1 EA	\$ 10.00
694.	7005-0-0175-045	COMPUTER, TRICORD, SN: H00045	1 EA	\$ 100.00
695.	7005-0-0175-056	MONITOR, SONY, SN: 5103056	1 EA	\$ 10.00
696.	7005-0-0175-0694	MONITOR, AT&T, SN: 17-27200694	1 EA	\$ 10.00
697.	7005-0-0175-084	PRINTER, BROTHER, SN: J49324084	1 EA	\$ 10.00
698.	7005-0-0175-0966	PRINTER, HEWLETT PACKARD, JET USI, SN: USBB160966	1 EA	\$ 75.00
699.	7005-0-0175-1000	MONITOR, SONY, SN: 8001000	1 EA	\$ 10.00
700.	7005-0-0175-112	MONITOR, WYSE, SN: QWY11101112	1 EA	\$ 10.00
701.	7005-0-0175-114	PRINTER, EPSON, SN: 0A50120114	1 EA	\$ 10.00
702.	7005-0-0175-123	MONITOR, SONY, SN: 8101123	1 EA	\$ 10.00
703.	7005-0-0175-136	MONITOR, SONY, SN: 8101136	1 EA	\$ 10.00
704.	7005-0-0175-144	MONITOR, SONY, SN: 810144	1 EA	\$ 10.00
705.	7005-0-0175-186	MONITOR, SONY, 8109186	1 EA	\$ 10.00
706.	7005-0-0175-192	MONITOR, SONY, SN: 8109192	1 EA	\$ 10.00
707.	7005-0-0175-199	MONITOR, SONY, SN: 8109199	1 EA	\$ 10.00
708.	7005-0-0175-214	MONITOR, SONY, SN: 8005214	1 EA	\$ 10.00
709.	7005-0-0175-222	MONITOR, SONY, SN: 5010222	1 EA	\$ 10.00
710.	7005-0-0175-236	MONITOR, SONY, SN: 5102236	1 EA	\$ 10.00
711.	7005-0-0175-238	CPU, MARQUETTE, MUSE SYSTEM, SN: 02238	1 EA	\$ 25.00
712.	7005-0-0175-253	CPU, ACER, SN: A151004253	1 EA	\$ 10.00
713.	7005-0-0175-261	PRINTER, EPSON, SN: 4161005261	1 EA	\$ 10.00
714.	7005-0-0175-282	MONITOR, SONY, SN: 8116282	1 EA	\$ 10.00
715.	7005-0-0175-315	MONITOR, TATUNG, SN: 89017315	1 EA	\$ 10.00
716.	7005-0-0175-318	CPU, CYGNET, SN: 0102318	1 EA	\$ 10.00
717.	7005-0-0175-322	MONITOR, AT&T, SN: 17-27897322	1 EA	\$ 10.00
718.	7005-0-0175-330	PRINTER, KYOCERA, SN: ABF0208330	1 EA	\$ 10.00
719.	7005-0-0175-337	MONITOR, SONY, SN: 5523337	1 EA	\$ 10.00
720.	7005-0-0175-338	PRINTER, KYOCERA, SN: A6F0Z08338	1 EA	\$ 10.00
721.	7005-0-0175-339	MONITOR, SONY, SN: 552339	1 EA	\$ 10.00
722.	7005-0-0175-365	PRINTER, KYOCERA, SN: ABF0208365	1 EA	\$ 10.00
723.	7005-0-0175-379	PRINTER, EPSON, SN: 4161051379	1 EA	\$ 10.00
724.	7005-0-0175-387	MONITOR, COMPAQ, SN: 630B005A1387	1 EA	\$ 10.00
725.	7005-0-0175-416	MONITOR, SHAMROCK, SN: 65TTB0270416	1 EA	\$ 10.00

10/02/00

IOWA FEDERAL SURPLUS PROPERTY CATALOG

ITEM NO.	INVENTORY NUMBER	DESCRIPTION	QTY ON HAND	UNIT SERVICE CHARGE
726.	7005-0-0175-4186	CPU, COMPU-ADD, SN: 0814186	1 EA	\$ 25.00
727.	7005-0-0175-419	MONITOR, RELISYS, SN: 1343419	1 EA	\$ 10.00
728.	7005-0-0175-449	MONITOR, SONY, SN: 5094449	1 EA	\$ 10.00
729.	7005-0-0175-450	MONITOR, SONY, SN: 5094450	1 EA	\$ 10.00
730.	7005-0-0175-515	MONITOR, DIGITAL, SN: 1K45080515	1 EA	\$ 10.00
731.	7005-0-0175-518	MONITOR, SONY, 5109518	1 EA	\$ 10.00
732.	7005-0-0175-519	PRINTER, BROTHER, SN: J49308519	1 EA	\$ 10.00
733.	7005-0-0175-520	MONITOR, SONY, SN: 5109520	1 EA	\$ 10.00
734.	7005-0-0175-522	MONITOR, SONY, SN: 5523522	1 EA	\$ 10.00
735.	7005-0-0175-524	MONITOR, SONY, SN: 5523524	1 EA	\$ 10.00
736.	7005-0-0175-525	MONITOR, SONY, SN: 5523525	1 EA	\$ 10.00
737.	7005-0-0175-526	MONITOR, SONY, SN: 5523526	1 EA	\$ 10.00
738.	7005-0-0175-534	MONITOR, SHAMROCK, SN: 5B TSA0474534	1 EA	\$ 10.00
739.	7005-0-0175-58H	CPU, ADVANCED COMPUTER TECH, SN: 920924-10158-H	1 EA	\$ 10.00
740.	7005-0-0175-591	MONITOR, SONY, SN: 5520591	1 EA	\$ 10.00
741.	7005-0-0175-594	MONITOR, SONY, SN: 5520594	1 EA	\$ 10.00
742.	7005-0-0175-605	MONITOR, SONY, SN: 5121605	1 EA	\$ 10.00
743.	7005-0-0175-62Y	COMPUTER, WANG, SN: 34562Y	1 EA	\$ 20.00
744.	7005-0-0175-638	MONITOR, SONY, SN: 5110638	1 EA	\$ 10.00
745.	7005-0-0175-639	MONITOR, SONY, SN: 5110639	1 EA	\$ 10.00
746.	7005-0-0175-640	MONITOR, SONY, SN: 5110640	1 EA	\$ 10.00
747.	7005-0-0175-641	MONITOR, SONY, SN: 5110641	1 EA	\$ 10.00
748.	7005-0-0175-642	MONITOR, SONY, SN: 5110642	1 EA	\$ 10.00
749.	7005-0-0175-646	MONITOR, SONY, 5047646	1 EA	\$ 10.00
750.	7005-0-0175-656	MONITOR, SONY, SN: 8164656	1 EA	\$ 10.00
751.	7005-0-0175-667	MONITOR, ACER, SN: M34+130667	1 EA	\$ 10.00
752.	7005-0-0175-679	MONITOR, AT&T, SN: 17-27200679	1 EA	\$ 10.00
753.	7005-0-0175-682	MONITOR, AT&T, SN: 17-27200682	1 EA	\$ 10.00
754.	7005-0-0175-683	MONITOR, AT&T, SN: 17-27200683	1 EA	\$ 10.00
755.	7005-0-0175-687	MONITOR, AT&T, SN: 17-27200687	1 EA	\$ 10.00
756.	7005-0-0175-688	MONITOR, AT&T, SN: 17-27200688	1 EA	\$ 10.00
757.	7005-0-0175-691	MONITOR, AT&T, SN: 17-27200691	1 EA	\$ 10.00
758.	7005-0-0175-693	MONITOR, AT&T, SN: 17-27200693	1 EA	\$ 10.00
759.	7005-0-0175-694	MONITOR, SONY, SN: 5520694	1 EA	\$ 10.00
760.	7005-0-0175-695	MONITOR, AT&T, SN: 17-27200695	1 EA	\$ 10.00
761.	7005-0-0175-697	MONITOR, SONY, SN: 5092697	1 EA	\$ 10.00
762.	7005-0-0175-708	MONITOR, SONY, SN: 5078708	1 EA	\$ 10.00

10/02/00

IOWA FEDERAL SURPLUS PROPERTY CATALOG

ITEM NO.	INVENTORY NUMBER	DESCRIPTION	QTY ON HAND	UNIT SERVICE CHARGE
763.	7005-0-0175-713	MONITOR, SONY, SN: 7000713	1 EA	\$ 10.00
764.	7005-0-0175-7318	CPU, ACER, SN: A697318	1 EA	\$ 25.00
765.	7005-0-0175-740	MONITOR, SONY, SN: 5071740	1 EA	\$ 10.00
766.	7005-0-0175-746	MONITOR, ACER, SN: M134T045746	1 EA	\$ 10.00
767.	7005-0-0175-749	MONITOR, MAGNAVOX, SN: 7BM749	1 EA	\$ 10.00
768.	7005-0-0175-760	MONITOR, IBM, SN: 23F7760	1 EA	\$ 10.00
769.	7005-0-0175-7605	CPU, ACER, SN: 1017605	1 EA	\$ 10.00
770.	7005-0-0175-764	MONITOR, SONY, SN: 5108764	1 EA	\$ 10.00
771.	7005-0-0175-783	MONITOR, SONY, SN: 5108783	1 EA	\$ 10.00
772.	7005-0-0175-785	MONITOR, SONY, SN: 5108785	1 EA	\$ 10.00
773.	7005-0-0175-796	MONITOR, HYUNDAI, SN: MHHA102302796	1 EA	\$ 10.00
774.	7005-0-0175-836	PRINTER, EPSON, SN: 40UD003836	1 EA	\$ 10.00
775.	7005-0-0175-878	MONITOR, SONY, SN: 8005878	1 EA	\$ 10.00
776.	7005-0-0175-896	MONITOR, SONY, SN: 5192896	1 EA	\$ 10.00
777.	7005-0-0175-931	MONITOR, SONY, SN: 5094931	1 EA	\$ 10.00
778.	7005-0-0175-936	MONITOR, SONY, SN: 5012936	1 EA	\$ 10.00
779.	7005-0-0175-937	MONITOR, IBM, SN: 2305937	1 EA	\$ 10.00
780.	7005-0-0175-9515	MONITOR, SONY, SN: 5109515	1 EA	\$ 10.00
781.	7005-0-0175-9519	MONITOR, SONY, 5109519	1 EA	\$ 10.00
782.	7005-0-0175-957	MONITOR, DIGIVIEW, SN: 3LN6916L309957	1 EA	\$ 10.00
783.	7005-0-0175-957M	MONITOR, SONY, SN: 8000957	1 EA	\$ 10.00
784.	7005-0-0175-9667	PRINTER, HEWLETT PACKARD, SN: 2743J79667	1 EA	\$ 10.00
785.	7005-0-0175-969	MONITOR, RELISYS, SN: 2540537969	1 EA	\$ 10.00
786.	7005-0-0175-SRL	CPU, DIGITAL, SN: KA531CASRL	1 EA	\$ 10.00
787.	7005-0-0175-ZE9	CPU, DIGITAL, SN: KA452MLZE9	1 EA	\$ 10.00
788.	7005-0-0180-030	COMPUTER, ELECTRONIC DATA SYS, SN: 433VLD262030	1 EA	\$ 25.00
789.	7005-0-0180-255	COMPUTER, ELECTRONIC DATA SYS, SN: 433VLD261255	1 EA	\$ 25.00
790.	7005-0-0180-593	COMPUTER, ELECTRONIC DATA SYS, SN: 433VLD389593	1 EA	\$ 25.00
791.	7005-0-0180-734	COMPUTER, ELECTRONIC DATA SYS, SN: 433VLD110734	1 EA	\$ 25.00
792.	7005-0-0183-015	MONITOR, COLOR, SN: JX80318015	1 EA	\$ 5.00
793.	7005-0-0184-39E	MONITOR, 17", MICROSCAN, SN: 770R033139E	1 EA	\$ 25.00

10/02/00

IOWA FEDERAL SURPLUS PROPERTY CATALOG

ITEM NO.	INVENTORY NUMBER	DESCRIPTION	QTY ON HAND	UNIT SERVICE CHARGE
794.	7005-0-0184-49E	MONITOR, 17", MICROSCAN, SN: 770R037949E	1 EA	\$ 25.00
795.	7005-0-0191-042	PRINTER, DESKJET 500, HEWLETT PACKARD, SN: US63514042	1 EA	\$ 25.00
796.	7005-0-0191-122	PRINTER, HEWLETT PACKARD, DESKJET 500, SN: 3028A1122	1 EA	\$ 25.00
797.	7005-0-0191-189	PRINTER, HEWLETT PACKARD, IIP, SN: 3128599189	1 EA	\$ 25.00
798.	7005-0-0191-404	PRINTER, DESKJET 500, HEWLETT PACKARD, SN: 2219A11404	1 EA	\$ 25.00
799.	7005-0-0191-4BD	PRINTER, DESKJET 500, HEWLETT PACKARD, SN: 2219A11404	1 EA	\$ 25.00
800.	7005-0-0191-684	PRINTER, HEWLETT PACKARD, 1200C, SN: USCS801684	1 EA	\$ 25.00
801.	7005-0-0191-76A	PRINTER, DESKJET 500, HEWLETT PACKARD, SN: 2276A	1 EA	\$ 25.00
802.	7005-0-0191-973	PRINTER, HEWLETT-PACKARD, DESKJET 500, SN: 3228576973	1 EA	\$ 25.00
803.	7005-0-0191-KGO	PRINTER, DESKJET 500, HEWLETT PACKARD, SN: 3000J00KGO	1 EA	\$ 25.00
804.	7005-0-0191-ONW	PRINTER, HEWLETT PACKARD, DESKJET 550 COLOR PRINTER, SN: U551M140NW	1 EA	\$ 300.00
805.	7005-0-0195-134	MONITOR, MICROSCAN, SN: 770R033134	1 EA	\$ 15.00
806.	7005-0-0195-14R	PRINTER, HEWLETT PACKARD, MDL 890C, SN: SG77L1614R	1 EA	\$ 15.00
807.	7005-0-0195-34E	MONITOR, MICROSCAN, SN: 770R033134E	1 EA	\$ 15.00
808.	7005-0-0195-527	MONITOR, MICROSCAN, SN: 770R023527	1 EA	\$ 15.00
809.	7005-0-0195-569	MONITOR, AST, SN: 350H200E01569	1 EA	\$ 15.00
810.	7005-0-0195-620	MONITOR, MICROSCAN, SN: 770R031620	1 EA	\$ 15.00
811.	7005-0-0206-453	PRINTER, DESKJET, 1200C, SN: USA3709453	1 EA	\$ 15.00
812.	7005-0-0206-861	PRINTER, APPLE II, SN: 1337861	1 EA	\$ 15.00
813.	7005-09-0096-704	COMPUTER, LAPTOP, AST, SN: USN8002704	1 EA	\$ 15.00

10/02/00

IOWA FEDERAL SURPLUS PROPERTY CATALOG

ITEM NO.	INVENTORY NUMBER	DESCRIPTION	QTY ON HAND	UNIT	SERVIC CHARGE
814.	7005-09-0096-911	COMPUTER, LAPTOP, AST, SN: LR69911	1	EA	\$ 75.00
815.	7005-09-0247-627	PRINTER, HEWLETT PACKARD, SN: SGC4B05627	1	EA	\$ 25.00
816.	7005-09-0258-0D	MONITOR, MICRON, SN: 264R13R4410D	1	EA	\$ 15.00
817.	7010-0-0154-055	CPU, DELL, SN: DL15055	1	EA	\$ 50.00
818.	7010-0-0154-987	CPU, MICRONICS, SN: 36987	1	EA	\$ 10.00
819.	7010-0-0157-2CM	LAPTOP COMPUTER, PERSONAL, W/PRINTER, NEC, SN: 2401292CM	1	EA	\$ 50.00
820.	7010-0-0178-660	COMPUTER, LAPTOP, SYSTEM 6352, MEDIA MAGIC, SN: 7958065660	1	EA	\$ 50.00
821.	7010-0-0178-678	COMPUTER, NOTEBOOK, AST, SN: HEGRO12678	1	EA	\$ 50.00
822.	7010-0-0178-811	COMPUTER HANDBOOK SYSTEM #12686, GATEWAY, SN: 0341R0811,	1	EA	\$ 50.00
823.	7010-0-0178-L25	PROCESSOR, NOTEBOOK SYS 3840, TWIN HEAD, SN: 45L/25	1	EA	\$ 50.00
824.	7100-0-0075	DRAWER, DROPLID	5	EA	\$ 50.00
825.	7100-0-0093-CAB	CABINET, WALL MOUNT	1	EA	\$ 5.00
826.	7100-0-0127	CABINET, OPTIMEDIA	4	EA	\$ 25.00
827.	7100-0-0164	STAND, COMPUTER	1	EA	\$ 5.00
828.	7100-0-0175-STD	STANDS, MONITOR	7	EA	\$ 10.00
829.	7100-0-0183-DCB	DISPLAY CABINET, WOOD & GLASS	1	EA	\$ 75.00
830.	7100-0-0206	WORKBENCH TABLE TOP, WOOD, 1-3/4" THICK	1	EA	\$ 20.00
831.	7100-0-0206-CAB	CABINET, METAL	1	EA	\$ 30.00
832.	7100-08-0102-DES	DESK, ADVANCE, MDL 2000 (USING IN BREAK ROOM 5/99)	1	EA	\$ 100.00
833.	7100-09-0030-ORG	DESK ORGANIZER	1	EA	\$ 5.00
834.	7100-09-0065	CABINET, WOOD	2	EA	\$ 10.00
835.	7100-09-0095	RACKS, METAL, TAPE	2	EA	\$ 15.00
836.	7100-09-0111	CABINETS, 4-DWR & CABINET, WALL (1 WALL CAB IN BREAK ROOM SINCE 6/99)	1	EA	\$ 15.00
837.	7100-09-0116-SHL	SHELF, WOOD ON WHEELS	1	EA	\$ 50.00
838.	7100-09-0178	COMPUTER CART	1	EA	\$ 15.00
839.	7100-09-0206	DRAWERS, METAL, ASST. SIZES	74	EA	\$.50
840.	7100-09-0216	SHUTTLE, CRT	2	EA	\$ 15.00

10/02/00

IOWA FEDERAL SURPLUS PROPERTY CATALOG

ITEM NO.	INVENTORY NUMBER	DESCRIPTION	QTY ON HAND	UNIT	SERVICE CHARGE
841.	7100-09-0252-CAB	CABINET, COMPUTER	1	EA	\$ 40.00
842.	7120-09-0238	DESK, SECRETARIAL, WOODEN	1	EA	\$ 40.00
843.	7130	FILE CABINETS, 2, 4 & 5 DRAWER, LEGAL & LETTER, FLOOR CARD FILES, MAP CABINETS (ALL FILE CABINETS, EXCEPT FIREPROOF)	104	Ea	\$ 40.00
844.	7130-09-0188-SAF	SAFE, FILE	1	EA	\$ 50.00
845.	7155-0-0075-LOC	LOCKERS, WALL	5	EA	\$ 15.00
846.	7160-08-0125	BOOKCASE	1	EA	\$ 10.00
847.	7170-0-0189-SLF	SHELVING UPRIGHT	1	BD	\$ 25.00
848.	7175	CABINETS, STORAGE, ALL: STORAGE, 2-DOOR METAL (MAGNETIC TAPE STORAGE, SALE); SMALL PARTS BINS; KEY CABINETS; STAND;	12	Ea	\$ 40.00
849.	7185-0-0046	STAND, COMPUTER	1	EA	\$ 10.00
850.	7185-0-0074	TABLE, MIXING	1	EA	\$ 10.00
851.	7185-0-0075	COMPUTER TABLE, PLASTIC	1	EA	\$ 20.00
852.	7185-0-0081	TABLES	11	EA	\$ 10.00
853.	7185-0-0177	TABLE, END/NIGHT	2	EA	\$ 5.00
854.	7200-0-0028	BLINDS, MINI, 42" WIDE	4	EA	\$ 5.00
855.	7200-08-0122-TBL	TABLE, END	1	EA	\$ 15.00
856.	7200-08-0125	NIGHT TABLE	1	EA	\$ 10.00
857.	7215-0-0105-BKT	BLANKETS	71	EA	\$ 2.50
858.	7220-0-0177-DRS	DRESSER, CHEST	1	EA	\$ 10.00
859.	7220-0-0177-DWR	DRESSER, CHEST, 6 DRAWERS	4	EA	\$ 15.00
860.	7220-08-0125	CHEST, WOOD	1	EA	\$ 25.00
861.	7230-0-0012	PICTURE	1	EA	\$ 1.00
862.	7230-08-0123	PICTURE	1	EA	\$ 2.00
863.	7275-09-0159	MAIL BOX	6	EA	\$ 2.50
864.	7300-0-0122	RANGE OUTFIT, FIELD	1	EA	\$ 2.00
865.	7300-0-0132	RANGE OUTFIT, FIELD	2	OT	\$ 40.00
866.	7300-0-0181	LIQUID MEASURE, 2 QT	4	EA	\$ 2.00
867.	7300-0-0181-TRA	TRAY, SERVING, PLASTIC	313	EA	\$ 1.00
868.	7300-0-0181-WARM	WARMER, FOOD, 115V	5	EA	\$ 10.00
869.	7300-09-0034-DIS	DISPENSER, MILK/ICE CREAM, MDL CC60MFL, NJCT CORP, SN: 07050537003,	1	EA	\$ 125.00
870.	7300-09-0035	TRUCKS, FOOD SERVICE, HEATED & UNHEATED	2	EA	\$ 75.00

10/02/00

IOWA FEDERAL SURPLUS PROPERTY CATALOG

ITEM NO.	INVENTORY NUMBER	DESCRIPTION	QTY ON HAND	UNIT	SERVIC CHARGE
871.	7300-09-0038-DIS	DISPENSERS, TABLEWARE, HEATED & UNHEATED	4 EA	\$	75.00
872.	7300-09-0093	CONTAINERS, FOOD, METAL	2 EA	\$	5.00
873.	7300-09-0115	TRAYS, FOOD SERVING WITH CART	3 EA	\$	50.00
874.	7300-09-0197	SHELF, PLASTIC, 5 LAYERS, 20"X20", DRYER RACKS	5 EA	\$	5.00
875.	7300-09-0254	MICROWAVE, TAPPAN, 500 MDL, NO S/N	1 EA	\$	75.00
876.	7300-09-0254-076	MICROWAVE, PANASONIC, SN: D03076	1 EA	\$	75.00
877.	7300-09-0254-209	MICROWAVE, PANASONIC, SN: D03209	1 EA	\$	75.00
878.	7300-09-0254-915	MICROWAVE, PANASONIC, SN: D02915	1 EA	\$	75.00
879.	7300-09-0254-996	MICROWAVE, PANASONIC, SN: D02996	1 EA	\$	75.00
880.	7365-09-0178	PANS	10 EA	\$	1.32
881.	7370	KNIVES, FORKS, SPOONS, MESS:	329 Ea	\$.20
882.	7395-09-0044	TABLEWARE OUTFIT	2 SE	\$	35.00
883.	7400-0-0139-362	MICROFILMER, PORTABLE, RECORDAK, SN: 51362	1 EA	\$	10.00
884.	7400-0-0139-829	MICROFILMER, PORTABLE, RECORDAK, SN: 24829	1 EA	\$	10.00
885.	7405-0-0202	CALCULATOR, MFR. AURORA, MDL PR100, SN: AC96701583, AC93302511, AC98700422	3 EA	\$	5.00
886.	7405-08-0137-053	CALCULATOR, SHARP, SN: 12011053	1 EA	\$	15.00
887.	7405-08-0137-278	CALCULATOR, HAND HELD, TEXAS INSTRUMENTS, SN: 366278	1 EA	\$	10.00
888.	7405-08-0137-279	CALCULATOR, HAND HELD, TEXAS INSTRUMENTS, SN: 366279	1 EA	\$	10.00
889.	7405-08-0137-332	CALCULATOR, HAND HELD, TEXAS INSTRUMENTS, SN: 390332	1 EA	\$	10.00
890.	7405-08-0137-604	CALCULATOR, SHARP, SN: A14604	1 EA	\$	15.00
891.	7410-0-0091-110	TYPEWRITER, IBM SELEC III, SN: 6705-11454110	1 EA	\$	30.00
892.	7410-0-0136-121	TYPEWRITER, SELECTRIC II, SN: 262443121	1 EA	\$	5.00
893.	7410-0-0136-297	TYPEWRITER, SELECTRIC III, SN: 6705-114778297	1 EA	\$	25.00
894.	7410-0-0136-514	TYPEWRITER, SELECTRIC II, SN: 266102514	1 EA	\$	5.00
895.	7410-0-0136-525	TYPEWRITER, SELECTRIC III, SN:	1 EA	\$	10.00

10/02/00

IOWA FEDERAL SURPLUS PROPERTY CATALOG

ITEM NO.	INVENTORY NUMBER	DESCRIPTION	QTY ON HAND	UNIT SERVICE CHARGE
		6705-114778525		
896.	7410-0-0136-642	TYPEWRITER, SELECTRIC III, SN: 6705-114363642	1 EA	\$ 5.00
897.	7410-0-0136-940	TYPEWRITER, SELECTRIC II, SN: 266403940	1 EA	\$ 10.00
898.	7410-0-0136-944	TYPEWRITER, SELECTRIC II, SN: 266403944	1 EA	\$ 10.00
899.	7410-0-0136-945	TYPEWRITER, SELECTRIC II, SN: 266789945	1 EA	\$ 10.00
900.	7410-0-0136-947	TYPEWRITER, SELECTRIC II, SN: 266789947	1 EA	\$ 10.00
901.	7410-0-0136-993	TYPEWRITER, SELECTRIC III, SN: 6705-114635993	1 EA	\$ 25.00
902.	7410-0-0171-101	TYPEWRITER, IBM SEL III, SN: 6705-114549101	1 EA	\$ 25.00
903.	7410-0-0171-126	TYPEWRITER, IBM SEL III, SN: 6705-114543126	1 EA	\$ 25.00
904.	7410-0-0171-153	TYPEWRITER, IBM SEL III, SN: 6705-114543153	1 EA	\$ 25.00
905.	7410-0-0171-685	TYPEWRITER, IBM SEL III, SN: 6705-1147422685	1 EA	\$ 25.00
906.	7410-09-0232-897	TYPEWRITER, IBM, SELEC III, SN: 6705-11-4679897	1 EA	\$ 30.00
907.	7415-0-0175-888	TYPEWRITER, XEROX, SN: C80- 241888	1 EA	\$ 10.00
908.	7415-0-0188-201	TYPEWRITER, SWINTEC, SN: 592EE2201	1 EA	\$ 5.00
909.	7415-0-0188-746	TYPEWRITER, BROTHER, SN: E78- 198746	1 EA	\$ 5.00
910.	7415-0-0188-748	TYPEWRITER, BROTHER, SN: E78- 198748	1 EA	\$ 5.00
911.	7415-0-0188-753	TYPEWRITER, BROTHER, SN: E78- 198753	1 EA	\$ 5.00
912.	7415-0-0188-757	TYPEWRITER, BROTHER, SN: E78- 198757	1 EA	\$ 5.00
913.	7415-0-0188-862	TYPEWRITER, BROTHER, SN: E78- 198862	1 EA	\$ 5.00
914.	7415-0-0188-877	TYPEWRITER, IBM II, SN: 26- 1591877	1 EA	\$ 5.00

10/02/00

IOWA FEDERAL SURPLUS PROPERTY CATALOG

ITEM NO.	INVENTORY NUMBER	DESCRIPTION	QTY ON HAND	UNIT SERVICE CHARGE
915.	7415-0-0188-979	TYPEWRITER, IBM III, SN: 6705-114554979	1 EA	\$ 20.00
916.	7415-0-0202-448	TYPEWRITER, ADLER, ROYAL, MDL EW1000, SN: A92300432	1 EA	\$ 25.00
917.	7420-0-0175-678	DICTATOR/TRANSCRIBER, MICROCASSETTE, CRAIG, J585, SN: 10217678	1 EA	\$ 15.00
918.	7420-0-0175-809	DICTATOR/TRANSCRIBER, MICROCASSETTE, CRAIG, J585, SN: 10217809	1 EA	\$ 15.00
919.	7425-0-0050-507	POCKET MEMO RECORDER, NORELCO, SN: 353507	1 EA	\$ 5.00
920.	7425-0-0050-968	MICROCASSETTE RECORDER, MINI, NORELCO, SN: 255968	1 EA	\$ 5.00
921.	7435-0-0136-215	COPIER, MINOLTA, 4301, SN: 3634215	1 EA	\$ 50.00
922.	7440-0-0202-745	SHREDDER, MFR. WHITAKER BROTHERS, MDL 2601, SN: 2062745	1 EA	\$ 250.00
923.	7500-0-0093	PAPER JOGGER	1 EA	\$ 5.00
924.	7500-0-0185	SIGN PAINTING SET	1 SE	\$ 25.00
925.	7500-0-0189-CAR	CARTRIDGE, TAPE, DATA, SONY	11 EA	\$ 1.00
926.	7500-0-0189-CHI	CHINA MARKER PENCILS, RED	1 BX	\$.50
927.	7500-0-0189-COM	COMPASS, CIRCLE DRAWING	2 EA	\$.25
928.	7500-0-0189-COR	CORRECTION FLUID, PAPER & LIQUID PAPER, CORRECTION RIBBON, TYPEWRITER	33 BT	\$.15
929.	7500-0-0189-CRD	CARD BOX, 90% RECYCLED	3 EA	\$ 1.00
930.	7500-0-0189-CS	CASE, STORAGE, HOLDS 20	24 EA	\$ 2.00
931.	7500-0-0189-DIS	DISKETTES, MICRO, FLOPPY	26 BX	\$ 1.50
932.	7500-0-0189-ERA	ERASER, BLACKBOARD, 2X6"	3 EA	\$.25
933.	7500-0-0189-NDX	CARDS, INDEX, (RECYCLED) & 5X8 RULED: 3X5 ALPHABET	8 PG	\$.25
934.	7500-0-0189-PAD	PAD, COLUMN, 8-1/2 X 11"	12 PD	\$.10
935.	7500-0-0189-PEN	PENCILS, COLOR & RED LEAD	2 PG	\$.10
936.	7500-0-0189-STK	STICK METER & INCHES	4 EA	\$.50
937.	7500-0-0189-TRI	TRIANGLE, PLASTIC, 8" 45 DEG	4 EA	\$.25
938.	7500-0-0189-TRN	TRANSPARENCIES, XEROX	24 BX	\$ 1.00
939.	7500-0-0189-TRP	TRANSPARENCY MOUNTS	1 PG	\$.50
940.	7500-0-0202-ADD	ADDING MACHINE TAPE	49 RO	\$.25

10/02/00

IOWA FEDERAL SURPLUS PROPERTY CATALOG

ITEM NO.	INVENTORY NUMBER	DESCRIPTION	QTY ON HAND	UNIT SERVICE CHARGE
941.	7500-0-0202-CLI	CLIPS, BADGE	15 PG	\$ 2.00
942.	7500-0-0202-COR	CORRECTION FLUID	34 EA	\$.15
943.	7500-0-0202-HOL	HOLDER, BINDER, LABEL, 2"	12 BX	\$.50
944.	7500-0-0202-MEM	MEMO PAD, "MEMORANDUM OF CALL"	3 PG	\$ 1.00
945.	7500-0-0202-PAD	PADS, POST-IT NOTES	26 PG	\$ 2.50
946.	7500-0-0206	LABEL MAKER, DYMO	1 EA	\$ 5.00
947.	7500-06-0002	RING, LOOSELEAF, BIN	465 Bx	\$ 1.00
948.	7500-08-0236-STM	STAMPS, RUBBER	2 EA	\$.25
949.	7500-09-0159	RING, LOOSE LEAF	13 BX	\$ 1.00
950.	7500-09-0207-PAD	PADS, POST-IT, 20% RECYCLED	1 EA	\$.10
951.	7505-0-0202-ERA	ERASERS, PENCIL	1 BX	\$ 15.00
952.	7505-0-0202-PEN	PENCILS, BLACK 2-2/4	3 BX	\$ 5.00
953.	7515-0-0093	STAPLES	2 BX	\$.25
954.	7515-0-0181	TAPE, PLASTIC, CLEAR, 6" X 72 YDS	73 RO	\$ 1.00
955.	7515-09-0159	TAPE	37 PG	\$ 2.50
956.	7520-0-0181-PAP	PAPER, 8-1/2" X 11", BLUE, 5000/BX	6 BX	\$ 7.50
957.	7520-0-0192	PAPER, PRINTER, COLOR	9 BX	\$ 15.00
958.	7520-0-0192-DRF	PAPER, DRAFTING	13 BX	\$ 2.00
959.	7520-0-0192-FOL	FOLDERS, PANEL	1 BX	\$ 2.00
960.	7520-0-0192-PAP	PAPER, MISC	35 RM	\$ 2.00
961.	7520-0-0202-ENV	ENVELOPES	9 BX	\$ 1.00
962.	7520-0-0202-TAB	TABLETS, WHITE PAPER, LINED, 8- 1/2 X 11"	8 BX	\$ 5.00
963.	7525-0-0013	LABELS, ROLLS	6 EA	\$ 2.00
964.	7525-08-0247	LABEL, BARCODE	4 RO	\$ 10.00
965.	7525-09-0095	LABEL, ADHESIVE, WHITE, 2"X3", 20 PER SHEET	6 BX	\$ 10.00
966.	7550-0-0181-FIL	FILE FOLDER, LEGAL, BLUE, 100/BX	14 BX	\$ 5.00
967.	7550-0-0189	BINDER, SPRINGBACK, 11 X 8	9 EA	\$.50
968.	7550-0-0202-FIL	FILE FOLDERS	8 BX	\$ 5.00
969.	7550-0-0202-HAN	FOLDERS, HANGING FILE, LETTER SIZE	16 BX	\$ 1.00
970.	7555-0-0202-BAN	BANDS, RUBBER	7 BG	\$ 1.00
971.	7605-0-0139	BOOKS, AGRICULTURAL, HARD BOUND, USDA	75 EA	\$.50
972.	7700-0-0133-066	STEREO W/SPEAKERS, CURTIS MATHES, SN: 31401066	1 EA	\$ 75.00

10/02/00

IOWA FEDERAL SURPLUS PROPERTY CATALOG

ITEM NO.	INVENTORY NUMBER	DESCRIPTION	QTY ON HAND	UNIT SERVICE CHARGE
973.	7715-0-0133-CLA	CLARINET	1 EA	\$ 50.00
974.	7720-09-0228	DRUM, BASS	1 EA	\$ 175.00
975.	7735-09-0021-328	TELEVISION, SONY, TRINITRON 27", COLOR, MDL KV-27TS32, SN: 7106328	1 EA	\$ 75.00
976.	7800-0-0162-057	EXERCISE BIKE, MONARK, SN: MED8057	1 EA	\$ 75.00
977.	7800-08-0233	EXERCISE MACHINE, MFR. LITE CYCLE, NO SN	1 EA	\$ 25.00
978.	7840-0-0049	DUMBBELL, VARIOUS WEIGHTS	19 EA	\$ 10.00
979.	7840-09-0180	GYM EQUIPMENT, MARCY, MDL GK66, SN: 1040; FRAMES WITH PULLUP WEIGHTS; NO BENCHES, ACQ 5/76	1 EA	\$ 300.00
980.	7840-09-0245	TREADMILL, LANDICE, MDL 8700, NO S/N	1 EA	\$ 250.00
981.	7840-09-0245-BIC	BICYCLE, TREK, MDL 2200, NO SN	1 EA	\$ 150.00
982.	7900-0-0177-030	CLEANER, VACUUM, PNEUMATIC, HAKO MINUTEMAN, SN: 70340030	1 EA	\$ 250.00
983.	7900-0-0181	BOWL, WASH BASIN, PLASTIC, 5 QT	64 EA	\$.25
984.	7900-0-0181-SQU	SQUEEGEE, FLOOR	48 EA	\$ 2.00
985.	7900-09-0052-PIN	DETERGENT/DISINFECTANT PINE OIL	4 EA	\$ 2.00
986.	7900-09-0206-982	VACUUM CLEANER, AMERICAN VACUUM CLEANER, MDL PB105, SN: 780982	1 EA	\$ 500.00
987.	7905-0-0195	SHOP VACUUM	1 EA	\$ 15.00
988.	7905-09-0001-CLN	CARPET CLEANER, WAND (TO BE SOLD TOGETHER)	3 EA	\$ 500.00
989.	8000-0-0155	ADHESIVE	2 EA	\$ 7.50
990.	8015-08-0250	PAINT, OIL BASED, WOOD STAIN	7 GL	\$ 5.00
991.	8100-0-0124	TRANSIT CASE	2 EA	\$ 50.00
992.	8100-0-0133-032	TANK, STORAGE, LIQUID NITROGEN, 2000 GAL. CAP., CRYENCO, SN: 7032	1 EA	\$ 1,000.00
993.	8100-0-0173	CONTAINER, FLUID	8 EA	\$ 10.00
994.	8100-0-0178	STEEL CASES, LOCKING, SEALABLE	3 EA	\$ 10.00
995.	8100-0-0181	BOTTLE, COLLAPSIBLE, GALLON, 12/BOX	12 BX	\$ 7.50
996.	8100-0-0181-BOT	BOTTLE, WASH, PLASTIC, RED, 16OZ	23 EA	\$.25
997.	8100-0-0185	CONTAINER, SHIPPING & STORAGE	2 EA	\$ 50.00
998.	8100-0-0195-REF	REFRIGERATION UNIT, TRAILER,	1 EA	\$ 3,000.00

10/02/00

IOWA FEDERAL SURPLUS PROPERTY CATALOG

ITEM NO.	INVENTORY NUMBER	DESCRIPTION	QTY ON HAND	UNIT SERVICE CHARGE
		MFR: FINSAM, MDL 2015, SN: 904253, 1990		
999.	8100-08-0234-BAG	BAGS, TRIPOD	13 EA	\$ 4.00
1000.	8105-0-0012	BAGS, MISC, EAR99	2 BX	\$ 2.00
1001.	8110-0-0181-BOX	BOX, PLASTIC, SMALL, BLACK, 25/CS	45 EA	\$.10
1002.	8110-0-0198-BOX	BOX, WOODEN	37 EA	\$ 5.00
1003.	8110-09-0167	CASES, METAL	4 EA	\$ 25.00
1004.	8120-09-0089	DRUM	31 EA	\$ 5.00
1005.	8130-0-0048-463	PROPANE TANK (EMPTY), 41.3 GAL. CAP., MFR. MANCHESTER TANK, SN: 183463	1 EA	\$ 50.00
1006.	8140-0-0047	CLIPS, MISC.	4 BX	\$ 1.00
1007.	8300-04-0118-GWB	WEBBING, GREEN, 100 YDS/RO 5/8" W, & SAND COLOR, 80 YDS/RO, BOX TAPE TEXTILE, COTTON, 3/4" W	91 RO	\$ 1.00
1008.	8305-0-0186	TENTS, GP, MEDIUM	1 EA	\$ 40.00
1009.	8305-09-0065	TENT, LARGE, GEN PURP	1 EA	\$ 75.00
1010.	8325-0-0173	SHELTER HALF, TENT	13 EA	\$ 2.50
1011.	8325-0-0182	SHELTER HALF, TENT	22 EA	\$ 5.00
1012.	8330-0-0045	COT, FOLDING	4 EA	\$ 10.00
1013.	8330-0-0122	COT, FOLDING	2 EA	\$ 10.00
1014.	8400-0-0070	MAT, SLEEPING	14 EA	\$ 1.50
1015.	8400-0-0070-HDBD	HEADBAND ASSEMBLY	38 EA	\$ 1.00
1016.	8400-0-0070-PARK	PARKA, EXTREME COLD WEATHER	4 EA	\$ 5.00
1017.	8400-0-0075	OVERALLS, COLD WEATHER (BIBS ON P AISLE)	204 PR	\$ 7.50
1018.	8400-08-0161-TRO	TROUSERS, BDU	2 PR	\$ 7.50
1019.	8400-09-0067-MAT	MAT, FOAM	2 EA	\$ 1.50
1020.	8400-09-0088-BEL	BELT, INDIV. EQUIPMENT	16 EA	\$ 3.50
1021.	8400-09-0088-CAS	CASE, HANDCUFF	12 EA	\$ 1.00
1022.	8400-09-0088-HOL	HOLSTER	18 EA	\$ 5.00
1023.	8400-09-0088-OVR	OVERSHOES	13 PR	\$ 5.00
1024.	8400-09-0214	LINER CONVERSION KIT	32 EA	\$ 1.00
1025.	8400-09-0252-COV	COVERALLS	56 EA	\$ 2.00
1026.	8440-0-0170	FIELD JACKET	32 EA	\$ 10.00
1027.	8445-0-0011	GLOVE SET, CHEMICAL	664 SE	\$ 1.00
1028.	8450-09-0044	COVERALLS	8 EA	\$ 5.00
1029.	8455-09-0044	SHOES, SAFETY	1 PR	\$ 10.00

10/02/00

IOWA FEDERAL SURPLUS PROPERTY CATALOG

ITEM NO.	INVENTORY NUMBER	DESCRIPTION	QTY ON HAND	UNIT SERVICE CHARGE
1030.	8460	BOOTS, ALL (MEN'S & WOMEN'S) (INCLUDES COLD WEATHER)	368 Pr	\$ 25.00
1031.	8460-09-0009	OVERSHOES	685 PR	\$ 5.00
1032.	8460-09-0159	BOOTS, COMBAT, LEATHER	44 PR	\$ 10.00
1033.	8470	SLEEPING BAGS & COVERS	235 Ea	\$ 25.00
1034.	8500-09-0178	RAZOR BLADES	27 PG	\$.10
1035.	8505-0-0181	HAND SOAP, BORAX, 5 LB BOX	40 BX	\$ 1.50
1036.	9100-0-0101	VALVE COMPOUND	1 LT	\$.50
1037.	9100-08-0104-INH	INHIBITOR, ICING, FUEL	12 CN	\$ 1.00
1038.	9100-08-0104-LUB	LUBE OIL, GENERAL PURPOSE	21 BT	\$.25
1039.	9100-08-0134	MOLD RELEASE, MC GEE IND., MDL 1725.	7 CN	\$ 1.00
1040.	9100-09-0042	REFRIGERATION OIL, C3, GAL CONTAINER	12 GL	\$ 10.00
1041.	9100-09-0089	SPRAY, DRY LUBE RELEASE AGENT	15 CN	\$ 1.50
1042.	9115-0-0189	OIL, TURBO, 2-YR SHELF LIFE LAPSED	1 CN	\$.50
1043.	9115-06-0310	OIL, LUBRICATING, GEAR, SYNTHETIC, 75W (QTS & 5-GAL)	107 Ea	\$ 10.00
1044.	9115-09-0052-OIL	LUBE OIL, QUARTS	167 QT	\$.50
1045.	9120	GREASE, AUTOMOTIVE	12 Cn	\$ 10.00
1046.	9120-08-0079	GREASE, AUTO	16 EA	\$.25
1047.	9300-0-0189-POL	POLYCARBONATE LEXON SHEET	1 SH	\$ 10.00
1048.	9300-08-0134	TEFLON STOCK,	1 EA	\$ 15.00
1049.	9310-0-0181	RUBBER SHEET, 3 FT X 3 FT	270 EA	\$ 2.00
1050.	9500-09-0089-UNI	UNISTRUT	2 EA	\$ 1.00
1051.	9515-0-0075	SHEET METAL, 16 GA., 3 X 8' SHEETS	9 SH	\$ 20.00
1052.	9900-0-0013	FRAMES, PICTURE	5 EA	\$.50
1053.	9900-08-0013-PLA	PLASTIC SHEET	40 Ea	\$ 4.00
1054.	9900-08-0123-BUL	BULLETIN BOARD	1 EA	\$ 10.00
1055.	9900-08-0236-HOU	HOUSING, FILTER	1 EA	\$ 5.00

IOWA FEDERAL SURPLUS PROPERTY
DEPT OF GENERAL SERVICES
FAIRGROUNDS DISTRIBUTION CENTER
DES MOINES, IOWA 50319-0294

PRSR STD
U. S. POSTAGE
PAID
DES MOINES, IOWA
PERMIT NO. 1195

STATE LIBRARY OF IOWA



3 1723 02044 3453