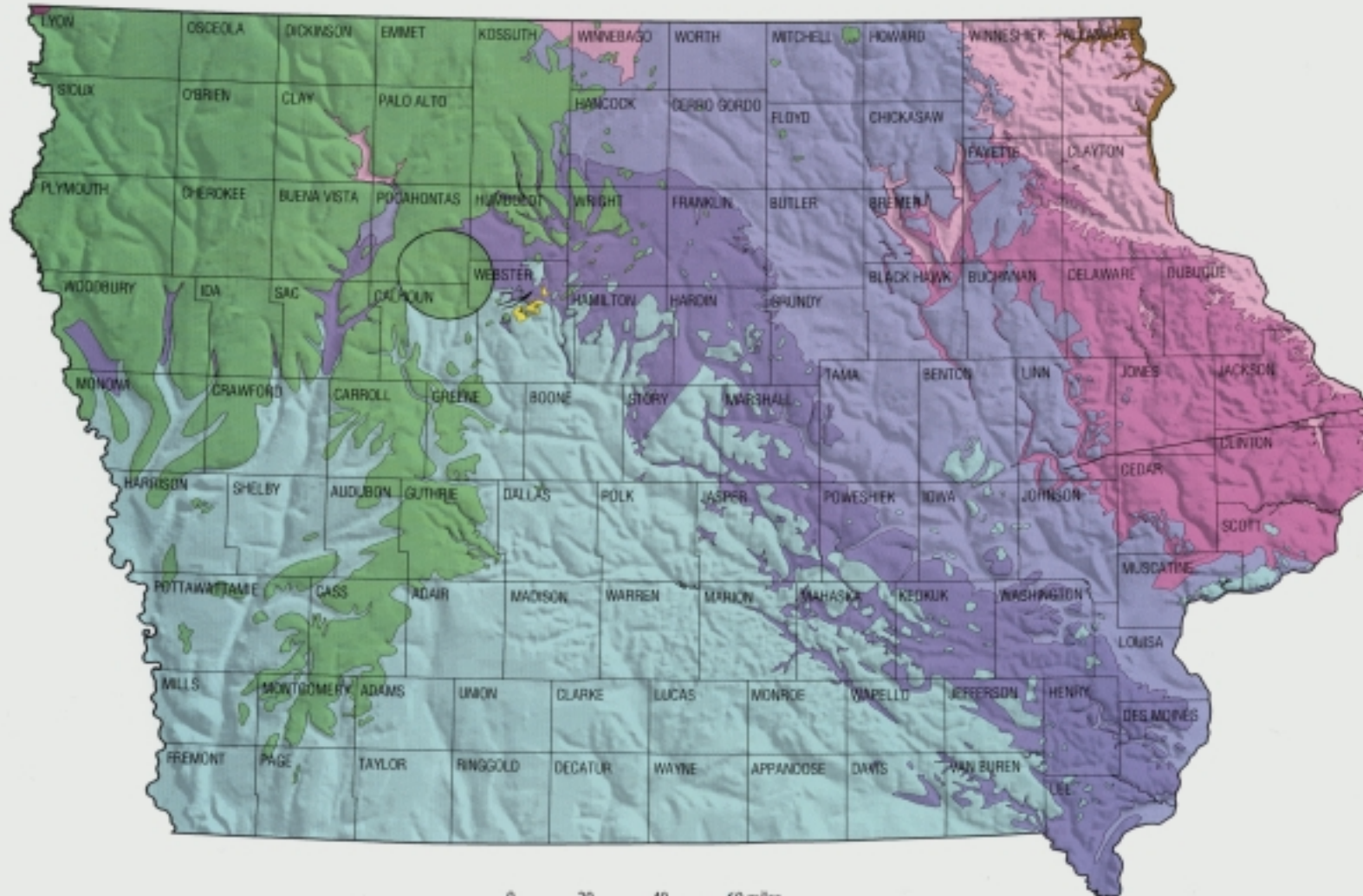


# BEDROCK GEOLOGIC MAP OF IOWA

## 1998



### Geologic Systems

Age of rocks in Iowa  
(million years before present)

- Cretaceous**  
(74–102)
- Jurassic**  
(160)
- Pennsylvanian**  
(298–320)
- Mississippian**  
(325–353)
- Devonian**  
(355–385)
- Silurian**  
(415–435)
- Ordovician**  
(439–505)
- Cambrian**  
(505–530)
- Precambrian**  
(600?–2,910+)
- Fault trace
- Manson Impact Structure

Shading highlights relief  
on the bedrock surface.

