

164A-993AF

SCHOLARSHIPS AND LOANS



Available
To Iowa
High School
Graduates

Published by The State of Iowa
Department of Public Instruction
Paul F. Johnston, Superintendent

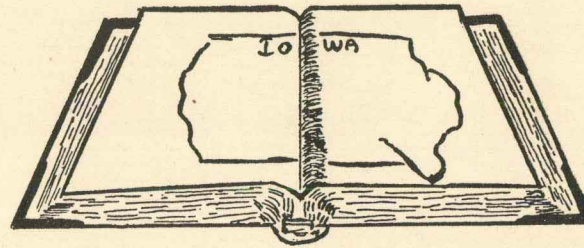
Iowa
378.3
I09

LB
2337.5
.I8
S36
1964

IOWA STATE TRAVELING LIBRARY
DES MOINES, IOWA

Gov. Off. dep.

Iowa
No. 378.3 Class Io9 Vol.



IOWA STATE TRAVELING LIBRARY

DATE DUE

	JUL 25 1966	MAR-8 1973		
GAYLORD				PRINTED IN U.S.A.

State of Iowa
1964

SCHOLARSHIPS AND LOANS

Available to
College Freshmen

A handbook for the use of
advisers of Iowa high school students

Produced in

THE DEPARTMENT OF PUBLIC INSTRUCTION

In cooperation with

THE AMERICAN ASSOCIATION OF UNIVERSITY WOMEN
Iowa State Division

Published by
The State of Iowa
Des Moines
Price \$1.00

IOWA STATE TRAVELING LIBRARY
DES MOINES, IOWA

Iowa
378.3
I09

State of Iowa
DEPARTMENT OF PUBLIC INSTRUCTION
Des Moines, Iowa

C. W. ANTES, President West Union
DELMAR F. BUSSE, Vice President. Oakland
SHERMAN W. HIRSCHLER Fairfield
C. E. JUDD Thompson
LESTER D. MENKE. Calumet
MRS. JAMES SHANNAHAN Des Moines
MRS. VIRGIL E. SHEPARD Allison
JOHN D. WARIN. Maloy
MRS. OTHA D. WEARIN. Hastings

DEPARTMENT OF PUBLIC INSTRUCTION

ADMINISTRATION

PAUL F. JOHNSTON Superintendent of Public Instruction
and Executive Officer of the State
Board of Public Instruction
DAVID H. BECHTEL Administrative Assistant
W. T. EDGREN Assistant Superintendent - Administration
L. N. JENSEN Assistant Superintendent - Instruction

Division of
Administration and Finance
Richard N. Smith, Director

Cover Design by
Dr. Marvin W. Ingle, Director
Division of Data Processing

Prepared by
F. R. Burnham
Statistical Consultant

State of Iowa
Department of Public Instruction

STATE OFFICE BUILDING
Des Moines, Iowa 50319

W. T. EDGREN
ASSISTANT SUPERINTENDENT
ADMINISTRATION

PAUL F. JOHNSTON
SUPERINTENDENT

DAVID H. BECHTEL
ADMINISTRATIVE ASSISTANT

L. N. JENSEN
ASSISTANT SUPERINTENDENT
INSTRUCTION

Throughout the history of civilization it has been recognized that the fate of nations depends upon the education of youth. The United States is the only nation that has had the daring to put into practice the concept that both the individual and society will profit from educating all to the limits of their interests and abilities.

This concept has not been fully realized because in our endeavor to educate all we have not made education available to all. Through publicly-supported schools our society has approached equalization of opportunity for those desiring elementary and secondary education. Today, graduation from high school is commonly considered the minimum goal for all youth and it can be achieved by those possessing the capacity and ambition to reach this level of education.

The same opportunity is not a reality for those having the capacity for college or university education. Many qualified students are unable to pursue college education because they cannot afford the price. Elementary and secondary educational costs are borne by the school district. College costs must be paid by the student. Attempts are being made by many individuals, organizations, and agencies to correct this situation. The material contained in this publication presents information concerning the availability of funds for higher education.

It is my sincere hope that the use of this material by Iowa high school students and their parents will provide one source for the equalization of opportunity that is not presently available.

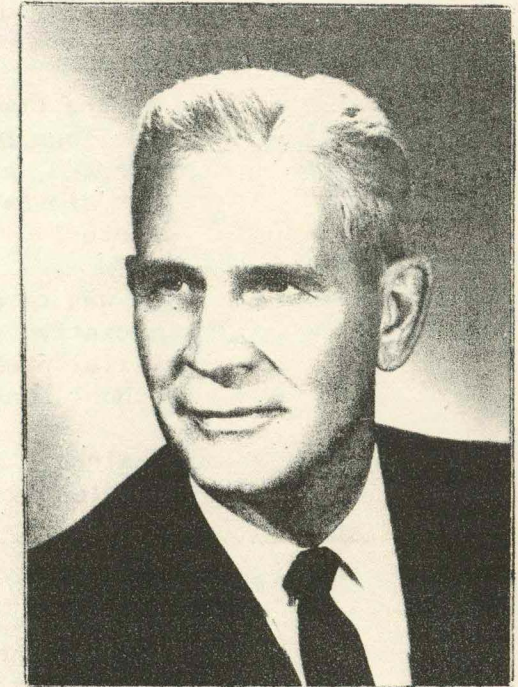
Sincerely yours,

Paul F. Johnston

PAUL F. JOHNSTON

State Superintendent of Public Instruction

289622



PAUL F. JOHNSTON

3-15-65
Governor's Office
Secretary

FOREWORD

The State Department of Public Instruction receives many requests for information concerning financial aids which are available to students who need assistance with college expenses. These inquiries seem to emphasize the need of a publication which lists the scholarships available to Iowa high school graduates interested in higher education.

At the time such a publication was being considered, it was learned that the Iowa Division of the American Association of University Women had adopted, as a 1963 project, the publication of an Iowa scholarship booklet similar to brochures the Association had provided for several other states.

It was an easy procedure for the two organizations to arrange for a cooperative production of a single publication. It is hoped that the material presented herewith will prove beneficial to those who counsel high school seniors desiring further education.

A sincere sense of gratitude is expressed to those individuals who so graciously supplied the information for this brochure.

F. R. Burnham
Statistical Consultant

Mrs. Evelyn Wood
Fellowships Chairman

For the
DEPARTMENT OF PUBLIC INSTRUCTION

For the
ASSOCIATION OF UNIVERSITY WOMEN

TABLE OF CONTENTS

Superintendent's Message i
 Foreword ii
 Table of Contents. iii
 Introduction iv
 Section I, Colleges of Iowa. 1

Colleges and Universities

Briar Cliff 3
 Buena Vista 3
 Central 6
 Clarke. 8
 Coe 9
 Cornell 11
 Drake University. 13
 Graceland 19
 Grinnell. 20
 Iowa State University 21
 Iowa Wesleyan 29
 Loras 31
 Luther. 32
 Marycrest 34
 Morningside 36
 Mount Mercy 37
 Northwestern. 39
 Parsons 41
 Saint Ambrose 42
 Simpson 44
 State College of Iowa 45
 State University of Iowa. 47
 University of Dubuque 50
 Upper Iowa University 51
 Vermard 52
 Wartburg. 53
 Westmar 56
 William Penn. 58

Section I Continued.

Junior and Community Colleges

Boone 2
 Burlington. 5
 Centerville 6
 Clarinda. 7
 Clinton 9
 Creston 12
 Dordt 12
 Eagle Grove 16
 Ellsworth 17
 Emmetsburg. 17
 Estherville 18
 Fort Dodge. 18
 Grandview 20
 Keokuk. 30
 Marshalltown. 32
 Mason City. 35
 Mount Saint Clare 38
 Muscatine 39
 Ottumwa Heights 40
 Waldorf 52
 Webster City. 55

Theological Seminaries

Drake (Disciples of Christ) 13
 Dubuque (Presbyterian). 16
 Wartburg (Lutheran) 54

Section II Scholarships by Name, or
 Name of Donor. 60

Section III Scholarships by Subject
 Matter Fields. 74

INTRODUCTION

As American society grows more complex the advantages to be gained by continuing one's education beyond high school become more pronounced. It is taken for granted that college training offers opportunities to enrich a person's life through intellectual, cultural, social, and moral development. More tangible rewards await the individual with a college education. He has a decided advantage in the labor market in securing employment, in job tenure, and in opportunities for advancement. Certain research has shown that the life earnings of a college graduate are much greater than that of a high school graduate.

The number of high school graduates seeking admission to college continues to increase. Many colleges receive more applications for admission than facilities will accommodate, therefore, they can be selective in filling their enrollment quotas. Students hoping to attend college should begin early to make plans. They should take high school courses that will prepare them to enter the college of their choice, and they should work hard to make as good a record as possible.

The yearly cost of a college education continues to be high. This booklet has been prepared to aid high school students in selecting a college, and to provide information which will be useful in seeking financial assistance for college expenses. A student who needs financial help should discuss his plans with his principal or counselor, converse with others who are active in his desired field, select the college he desires to attend, and then make application to the college for admission and financial aid. Each year many scholarships and loan funds are unused because many applications reach authorities after the dead line.

This booklet is designed for use by high school pupils and their counselors. An effort has been made to include

all financial aids available to college freshmen, and to leave out most of those which are only for upperclassmen or graduate students. If information about this type of aid is wanted, the student should write directly to the college of his choice.

Although scholarships are included by name or name of the donor, the names are relatively unimportant, because most scholarship and loan funds are turned over to the college to distribute. Likewise the value of the scholarship is not necessarily useful for the same reason. An application to the college for aid is evaluated and the amount of aid granted to the student is determined by the college officials. They may take the aid from more than one fund or may divide a certain fund among several worthy recipients.

Financial assistance consists of three basic types: (1) Scholarships which are outright gifts or grants which do not require repayment, (2) loans, which must be paid back, usually with interest and (3) jobs.

Scholarships are emphasized in this booklet and they are listed in three different categories. The first list contains condensed information about the colleges in Iowa together with those scholarships available only in each school. The second list has general scholarships listed alphabetically by name of the scholarship fund or the name of the donor. The third list contains scholarships listed alphabetically by subject matter fields.

Some scholarships are awarded exclusively on high scholastic records as evidenced by high school credits, and/or competitive examination. Most of them are based on evidence of ability to do college work and the need for financial assistance. Others are

based on outstanding achievement in special activities such as music, dramatics, or athletics.

This publication is restricted to financial aids available in junior colleges, colleges, and universities offering academic work leading to the baccalaureate degree. No attempt has been made to contact schools of beauty culture, barber colleges, business colleges, vocational schools, or hospital schools of nursing. Some nursing scholarships in hospitals having working agreements with schools whereby the students can earn a Bachelor of Science degree are included.

Students who do not receive scholarships in sufficient amount to make it possible for them to continue their education, should investigate the possibility of borrowing money. Most colleges have revolving funds under their control from which to make loans to worthy students. Most of these loans carry little if any interest until the recipient is out of college, and payments are delayed until the completion of the course. In addition, local banks and business firms often make a practice of helping students.

The largest single source of student loans now available is that provided by the federal government in the National Defense Education Act of 1958. Under the terms of this act, participating colleges receive funds which they can loan to worthy students. In the college section of this booklet, colleges cooperating with this program are shown by having the letters NDSL P in the descriptive data.

Under the terms of this act a student may borrow up to \$1,000 per year, with a maximum of \$5,000 during the course of college training. Repayment begins one year after the borrower ceases to be a full-time student and is to be completed in ten years. Interest at the rate of 3% per annum begins at the time the repayment period starts. The act contains the additional provision that if a borrower becomes a full-time teacher in a public elementary or secondary school, a maximum of 50% of the loan plus interest, may be cancelled at the rate of 10% for each year of teaching.

In most colleges there are opportunities for students to work for part of their expenses, either in the school or in the community. No attempt has been made to include work opportunities in this booklet. Inquiry should be made directly to the college admissions officials if work is wanted.

Section I
TWO YEAR COLLEGES, FOUR YEAR COLLEGES AND UNIVERSITIES IN IOWA

All Iowa junior or community colleges, regular colleges and universities offering academic work which will lead to bachelor's degrees or higher are listed alphabetically in this section. There is a paragraph of general information about each school followed by the scholarships which can be used only at that school.

Because this booklet is designed to be used by high school officials as they counsel their senior students regarding plans for continuing their education, only those scholarships for which freshmen are eligible, have been included. When they become residents at a college, they can learn about the many scholarships and fellowships that are available for upper classmen and graduate students.

Most colleges have loan funds to administer. Information about these and opportunities for work can be obtained by writing to the admissions offices of the colleges. (See also Introduction page v)

Many colleges are associated with the College Scholarship Service (CSS) a non-profit educational testing service which administers the College Entrance Examination Board test. When a student applies for financial assistance to one of the colleges associated with the service, he and his parents fill out a college scholarship service form. On this form he and his parents supply information about the family's income, debts, assets, and other financial conditions.

The completed form is sent to CSS which computes an estimate of the family's financial means and furnishes the information to the college. The estimate states how much the family might reasonably be expected to pay toward the student's college expense during the year. With this estimate and other information, the college may have a committee on student

aid determine how much and what kind of aid shall be awarded. Aid is awarded on an annual basis only, and adjustments may be made upward or downward from year to year as a family's financial situation changes.

Iowa schools associated with CSS are designated by the letters CSS in the descriptive material.

Explanations
Abbreviation of test names

CEEB	College Entrance Examination Board
ACT	American College Testing Program
SCAT	School and College Ability Test
PSAT	Preliminary Scholastic Aptitude Test
GAT	General Aptitude Test

Codes used to denote accreditation:

1. North Central Association of Colleges and Secondary Schools
2. State Department of Public Instruction approval for teacher education
3. State Department of Public Instruction approval of Public Junior or Community Colleges for state aid
4. National Council for Accreditation of Teacher Education

Abbreviations in the descriptive material for each college:

NDSLIP Indicates that the school is cooperating with the National Defense Education Program. National Defense student loans are available in schools where these letters occur.

CSS The college is associated with the College Scholarship Service, Box 176, Princeton, New Jersey.

Charges listed are the latest that were available at the time the colleges reported the data for this booklet. The colleges reserve the right to change rates at any time. Charges shown are those under the jurisdiction of the colleges only. School supplies, clothing, transportation, laundry, recreational and personal expenses are not included.

#####

BOONE JUNIOR COLLEGE

Boone, Iowa 50036

Founded 1927

Two year college, under community school board. Accredited by 3. Granted twenty-eight Associate of Arts degrees in 1963. Robert D. Heyen, Dean.

1963-1964		1964-1965	
<u>Enrollment</u>		<u>Costs</u>	
Men	113	N.-Resident	
Women	42	Tuition	\$200
	<u>155</u>	Resident	
		Tuition	170
		Fees	20

NDSL P

Name of Scholarship or Name of Donor	Eligibility	Amount	Apply to
Arthur Lantz Post American Legion		Tuition	Dean of the Junior College
Boone High Twelve		Tuition	Donor
Boone Education Association	Graduate of Boone High School entering the teaching profession	Tuition	Donor
Boone P.T.A.	Boone resident entering the teaching profession	$\frac{1}{2}$ tuition for 2 years	Donor
Forty and Eight		Tuition	Donor
Kiwanis Clubs		Tuition	Donor
Knodle Finance Company		Tuition	Donor
Lions-Rotary Clubs		Tuition	Junior College Schol- arship Committee

BRIAR CLIFF COLLEGE
Sioux City, Iowa 51104
Founded 1930

Four year liberal arts college for women, under private corporation with Catholic affiliation. Accredited by 1 and 2. Grants baccalaureate degrees in arts, science and music. Eighty-six granted in 1963. Sister Mary Rita Clare OSF, Registrar.
NDSLPL

1963-1964	1964-1965
Enrollment	Costs
Women 748	Tuition \$ 450
	Board & Room 660
	Fees 100
	<u>\$1210</u>

Name of Scholarship or Name of Donor	Eligibility	Amount	Apply to
Bishop Mueller Scholarship	Colored girls--need and high scholastic average, integrity.	Full tuition to two students.	Committee on Scholarship and Financial Aids
Sister Mary Servatius	High scholastic average. Student of foreign language. Need, integrity.	\$35.00	Same as above
Sister Mary Servatius Fund by Alumnae	Superior scholarship, need, integrity	Partial tuition	Same as above
L. Bertha Wellhausen Scholarship	Superior academic record, need, integrity	\$50.00	Same as above
Sister Mary Jeanette Hoffmann Memorial Scholarship	Same as above	\$250.00	Same as above

#####

BUENA VISTA COLLEGE
Storm Lake, Iowa 50588
Founded 1891

Four year liberal arts college, affiliated with the United Presbyterian Church of the U.S.A. Awards Bachelor of Arts and Bachelor of Science degrees. Jake M. LaFoy, Director of Admission. Accredited by 1 and 2.

1963-1964	1964-1965
Enrollment	Costs
Men 490	\$1650
Women 216	
Special Students	
Men 40	
Women 181	
TOTAL 927	

BUENA VISTA (continued)

NDSL P CSS

Name of Scholarship or Name of Donor	Eligibility	Amount	Apply to
Jessie Brown Memorial Scholarship	Scholarship and need	\$60.00 per semester	Scholarship Committee of the college
Business and Professional Women's Club of Storm Lake	Graduate of Storm Lake or Saint Mary's High School, most outstanding in character and leadership with scholastic achievement.	\$300.00	Business and Professional Women's Club of Storm Lake
L. J. Geisinger & Sons	Need	\$250.00 per year	College Scholarship Committee
Hested-Lee Stores Co.	Must be from area having a Hested-Lee Store, need, Christian character, recommendation of pastor, school principal, local businessmen and in upper 30% of graduating class.	\$500.00 -- 2, available	College Scholarship Committee
Hygrade Scholarship	Preference to sons and daughters of employees of Hygrade Food Stores. Academic ability, high school grades, and competitive tests, character, need.	\$300.00 per year	Same as above
Mary Kuhlmann Scholarship	Preference to foreign students, second to resident of Algona, Iowa.		By the college with concurrence of Session of First Presbyterian Church of Algona
Dr. John P. Lester Memorial Scholarship	Deserving students preparing for full time church vocation.	\$300.00	College Scholarship Committee
Elmer and Ida Preston Educational Trust	Same as the Lester Scholarship	\$600 maximum--\$400 as grant--\$200 as loan	Same as above
Rotary Club Scholarship	Outstanding high school senior		Storm Lake Rotary Club
Fred Strickler Scholarship	Preference to resident of Storm Lake with high scholarship in high school and qualities of determination and industry.	\$250.00 per year	College Scholarship Committee

BUENA VISTA (continued)

Name of Scholarship or Name of Donor	Eligibility	Amount	Apply to
Albert Tymeson Scholarship	Men--preference to residents of Storm Lake who best exemplify Mr. Tymeson's qualities of mind, character and manhood.	\$125.00--2 available	College Scholarship Committee
General Scholarships	Deserving students who do not qualify for above scholarships. Scholarship, leadership, character, special abilities and need.	Limited number--applied toward scholarships. Amounts determined by need.	Same as above

#####

BURLINGTON COMMUNITY COLLEGE

Burlington, Iowa 52601

Founded 1920

Two year college under community school board accredited by 3, offers courses in liberal arts, electronics technology, mechanics technology, and nursing. Awards Associate of Arts, Associate of Nursing degrees and Associate of Technical Science. D. D. Stonehocker, Dean, 1308 Valley St. Awarded 123 Associate degrees in 1963.

1963-1964	
<u>Enrollment</u>	
Men	297
Women	144
	<u>441</u>

1963-1964	
<u>Costs</u>	
Tuition and Fees	\$215

Name of Scholarship or Name of Donor	Eligibility	Amount	Apply to
Marilee Fladt Memorial Scholarship	High school senior of good character, who has made outstanding contributions to his school.	Not stated	College
Isaac Conner Scholarship Foundation	Scholastic ability, need and intention of completing a standard college program.	Not stated	College
Burlington Lions Club	Scholastic achievement, participation in activities, citizenship, and educational goal.	Full tuition	College
Board of Education Merit Scholarship	Superior students, with ability in "academic music", journalism, drama, teacher education, football, basketball, mathematics and science.	\$80.00	College

Name of Scholarship or Name of Donor	Eligibility	Amount	Apply to
Bennett Memorial Scholarship Altrusa Club, S.E. Iowa Motor Club, KBUR, Beta Sigma, Burlington Junior Women's Club, Thomas Dailey and Vivian Strand.	High school grade point of 2.0 or better and need.	Tuition	College
Dr. Bartach-Dunne Scholarship	Graduate of Burlington High School, may be used at Burlington Junior College or one of the three state schools.	Not stated	College

#####

CENTERVILLE COMMUNITY COLLEGE
Centerville, Iowa 52544
Founded 1930

Two year college under community school board, accredited by 3. Offers courses in liberal arts, business, electronics technology, auto mechanics--50 Associate of Arts degrees were awarded in 1963. Lyle Hellyer, Dean.
NDSL P

	1963-1964	1963-1964
	<u>Enrollment</u>	<u>Costs</u>
Men	220	Tuition \$239
Women	64	
	<u>284</u>	

Name of Scholarship or Name of Donor	Eligibility	Amount	Apply to
Centerville Chamber of Commerce Education Committee	On basis of scholarship, athletic ability, need.	Varies according to need.	Centerville C. of C. Education Committee

There are different programs supported jointly by citizens of Centerville and businessmen's organizations.

#####

CENTRAL COLLEGE
Pella, Iowa 50219
Founded 1853

Four year liberal arts college, affiliated with Reformed Church of America, accredited by 1 and 2. Granted 100 baccalaureate degrees in arts in 1963.
Richard Tysseling, Director of Admissions.

	1963-1964	1964-1965
	<u>Enrollment</u>	<u>Costs</u>
Men	412	Tuition \$ 870
Women	242	Room-Bd. 700
	<u>654</u>	Fees 80
		<u>\$1650</u>

NDSLP CSS

Name of Scholarship or Name of Donor	Eligibility	Amount	Apply to
Activity Awards	Upper ½ of high school class with a recommendation in special field, athletics, dramatics, forensics, music.	Up to full tuition	Director of Admissions for Committee on Financial Assistance.
Board of Domestic Missions	Sons and daughters of persons who work under this board.	\$300 per year	Same as above
	Women preparing for Christian service.	3 grants of \$200	Same as above
General Scholarship	Students with "B" average in high school who present evidence of superior character and personality and promise of future leadership may apply for scholarship.	Amount depends on need and can be renewed depending on college record.	Same as above
Grants-in-Aid	Based on academic record and need.	Varies--\$100 to \$300	Same as above
Honor Scholarships	Achievement test scores and rank appear in upper 10% of high school class.	\$500--15 available for freshmen	Same as above
Rolscreen Scholarship	Seniors of outstanding ability and achievement in scholarship and extra-curricular activities, competitive tests, interviews.	Full tuition that is renewable	Same as above

#####

CLARINDA COMMUNITY COLLEGE

Clarinda, Iowa 51632

Founded 1923

Two year college under community school board, accredited by 3. Offers courses in liberal arts, practical nursing, mechanical technology, business and secretarial. Granted 45 Associate of Arts degrees in 1963.

Dr. L. J. Sonneman, Dean.

	1963-1964	1963-1964
Enrollment		Costs
Men	143	\$210
Women	73	
	218	

NDSLP

Name of Scholarship or Name of Donor	Eligibility	Amount	Apply to
Clarinda Business and Professional Women's Club	Graduate of Clarinda High School	Tuition	Dr. Laurence Sonneman

CLARINDA COMMUNITY COLLEGE (continued)

Name of Scholarship or Name of Donor	Eligibility	Amount	Apply to
Clarinda Rotary Club and Clarinda Lions Club	Graduate of Clarinda High School Same as above	Tuition Same as above	Dr. Laurence Sonneman Same as above
Clarinda Oil Dealer's Association	Same as above	Same as above	Same as above
Clarinda Kiwanis Club	Same as above	Same as above	Same as above
Clarinda Junior College Scholarship	Valedictorian of any high school who enrolls at Clarinda Junior College	½ tuition	Same as above
Clarinda Junior College Basketball Scholarship	Member of varsity basketball team	Full tuition	Same as above

#####

CLARKE COLLEGE
Dubuque, Iowa 52001
Founded 1843

Four year liberal arts college for women, under private corporation with Catholic affiliation. Accredited by 1, 2 and 4. Awards Bachelor of Arts degree. Miss Ruth Reihle, Director of Admissions.

1963-1964
Enrollment
Women 900

1963-1964
Costs
Tuition \$ 700
Room & Bd. 950
Fees 150
\$1800

NDSL P CSS

Name of Scholarship or Name of Donor	Eligibility	Amount	Apply to
National B.V.M. Federation Scholarship	Achievement and promise, need, senior in a high school conducted by Sisters of Charity, B.V.M. Need, CEEB tests.	Up to \$600 per year and renewable for 4 years if need still exists and a 3.30 grade average is maintained. 2/3 renewal if grade average is 3.15, and ½ renewal if average is 3.00.	College Scholarship Service

CLARKE COLLEGE (continued)

Name of Scholarship or Name of Donor	Eligibility	Amount	Apply to
Liberal Arts Scholarship and Art Scholarships	Upper 10% of class and need, CEEB tests, submit art work.	\$600 per year, 4 years \$100 per year, 4 years	College Scholarship Service
Music Scholarships and Drama Scholarships	CEEB tests and submit a tape recording of 3 musical numbers prescribed by music de- partment, audition.	\$200 per year, 4 years \$200 per year	Same as above

#####

CLINTON JUNIOR COLLEGE
Clinton, Iowa 57232
Founded 1946

Two year college under community school board, accredited by 3, offers courses in liberal arts, practical nursing and electronics technology, granted 34 Associate of Arts degrees in 1963 and 17 certificates. Paul B. Sharar, Dean

1963-1964		1963-1964
Enrollment		Costs
Men	202	Tuition--books:
Women	48	Resident--\$215
	250	Non-res.--\$315

NDSL P

Name of Scholarship or Name of Donor	Eligibility	Amount	Apply to
American Association of University Women	Graduate of Clinton High School, ability and need.	\$100	Dean of the College
Junior Chamber of Commerce	Same as above	Full tuition	Same as above
Ernest Miller Educational Fund	Attend Clinton Junior College, awarded on basis of ability and need.	5 full tuition schol- arships.	Same as above

#####

COE COLLEGE
Cedar Rapids, Iowa 52402
Founded 1851

Four year liberal arts college. Private corporation affiliated with United Presbyterian Church U.S.A. The college is accredited by 1 and 2. Grants baccalaureate degrees in arts and music. 137 Bachelor's degrees granted in 1963. Whitlaw Wilson, Director of Admissions

1963-1964		1963-1964
Enrollment		Costs
Men	466	Tuition \$1175
Women	338	Room-Bd. 775
	804	Fees 20
		\$1970

COE COLLEGE (continued)

NDSL P CSS

Name of Scholarship or Name of Donor	Eligibility	Amount	Apply to
National Oats Company	Employees children (management excluded)	\$1000--can be for 2 students	Director of Admissions 1220 1st Ave. S.E.
Pennick and Ford	Employees children	\$1000	Pennick and Ford
WMT Radio and T.V.	In WMT listening area, need, good student	Full tuition	Admission Office
Anna Hyberger Memorial	Czech ancestry	\$450 freshmen year	Same as above
Robert Stuart Foundation	Employees children of Quaker Oats Company first choice, other Cedar Rapids students second choice.	Scholarship	Same as above
Nellie Sherwood Foundation	Preference to Cedar Rapids student	Scholarship	Same as above
Hanford No. 5 American Legion Auxiliary	Veterans child	\$250	Mrs. John Stodola 1951 Mt. Vernon Road
Cedar Rapids B. P. O. E.	Need	Scholarship	Scholarship Chairman Cedar Rapids Elks Club
Kings Daughters	Male student interested in ministry or social service.	\$300	Coe Admissions Office
Endowment Funds and Gifts	Upper $\frac{1}{4}$ of class, exceptional capacity for strong college work in scholastic aptitude test.	Up to full tuition and renewable if grades are high enough.	Admissions Office
Williston Jones Scholarship	Men students, need	Up to full tuition	Same as above
Stephen Phelps Scholarship	Women students, need	Same as above	Same as above
Samuel B. McCormick Scholarship	Need	Same as above	Same as above
James Marshall Scholarship	Need, superior music ability, plan to continue vocal or instrumental music.	Up to full tuition	Same as above

COE COLLEGE (continued)

Name of Scholarship or Name of Donor	Eligibility	Amount	Apply to
George Bryant Scholarship	High school senior man who exemplifies qualities of intelligence, resourcefulness, good sportsmanship as did Dr. Bryant, former Coe professor and athletic director.	\$1000	Admissions Office
Coe Growth Fund	Portion of fund allocates to general scholarship fund.	Varies	Same as above
Other Grants-in-Aid	Must maintain at least 1.0 grade point.	May be less than scholarship.	Same as above

#####

CORNELL COLLEGE
Mount Vernon, Iowa 52314
Founded 1853

Four year liberal arts college, Methodist affiliated. Independent Board of Trustees, accredited by 1, 2 and 4. Awards Bachelor's degrees in arts, sciences, music and music education. 110 baccalaureate degrees granted in 1963. Charles Jacot, Director of Admissions.

1963-1964		1963-1964	
Enrollment		Costs	
Men	450	Tuition	\$1240
Women	400	Room-Bd.	830
	850	Fees	130
			<u>\$2200</u>

NDSLP CSS

Name of Scholarship or Name of Donor	Eligibility	Amount	Apply to
William Fletcher King Scholarship	Examinations and interviews on campus in February. Must complete arrangements before Febr. 1, must be in top 10% of class.	Full tuition for 4 years depending on need, 8 available.	Director of Admission
Horace Alden Miller Music Scholarships	Auditions and interviews on campus.	Full tuition and renewable.	Department of Music Faculty
General Scholarships	Outstanding high school records, potential for scholarly achievement in college, need.	\$100-\$1000 per year.	Director of Admission
Cornell Honor Scholarship	Outstanding academic record.		Same as above
National Methodist Children of Ordained Ministers	Same conditions as general scholarships,	Vary in amount according to need.	Same as above

Name of Scholarship or Name of Donor	Eligibility	Amount	Apply to
Grants-in-Aid	Worthy students not qualified for scholarships.	\$100 to \$1000 renewable	Same as above

#####

CRESTON COMMUNITY COLLEGE
Creston, Iowa 50801
Founded 1926

Two year college under community school board accreditation 3, liberal arts, granted 44 Associate of Arts degrees in 1963. F. M. Herring, Dean - Box 460

	1963-1964	1964-1965
	<u>Enrollment</u>	<u>Costs</u>
Men	124	Tuition \$190
Women	54	
	<u>178</u>	

NDSL P

Name of Scholarship or Name of Donor	Eligibility	Amount	Apply to
Creston Kiwanis	Need and high scholarship.	Varies	Administered by college
Veterans of Foreign Wars	Same as above.	Varies	Same as above
V.F.W. Auxiliary	Same as above.	Varies	Same as above
P.T.A., Rotary, Elks Clubs	Same as above.	Varies	Same as above
Chamber of Commerce	Same as above.	Varies	Same as above

#####

DORDT COLLEGE
Sioux Center, Iowa 51250
Founded 1955

College under the auspices of a private society of Christian Reformed people, at the present time offering three years of college. Emphasis is on preparation of students for Christian vocations. Douglas Ribbens, Dean

	1963-1964	1964-1965
	<u>Enrollment</u>	<u>Costs</u>
Men	187	Tuition \$400
Women	177	Room & Bd. 450-510
	<u>364</u>	Fees 25
		<u>\$875-935</u>

DORDT COLLEGE (continued)

NDSLP

Name of Scholarship or Name of Donor	Eligibility	Amount	Apply to
Dordt College Freshmen Scholarship	Graduate of a school west of the Mississ- ippi River supported by Christian Reformed Churches in the Midwest. Scholarship, Christian character, personality and pro- mise of growth.	Tuition	Dordt College Faculty
	Two graduates of public high schools west of the Mississippi River who are members of the Christian Reformed Church--were not able to attend a Christian High School.	Tuition	Same as above

#####

DRAKE UNIVERSITY
Des Moines, Iowa 50311
Founded 1881

Non-tax supported university, independent, composed of nine colleges: liberal arts, business administration, education, fine arts, pharmacy, law, divinity, graduate and community colleges. Accredited by 1 and 2, and by societies related to each college. Granted 854 baccalaureate degrees in 1962-1963, and 165 advanced degrees including Masters and Juris Doctor.

1963-1964		1963-1964	
Enrollment		Costs	
Men	2251	Tuition \$	700
Women	1783	Room-Bd.	780
G. Men	302	Fees	10
G. Wm.	111		\$1490
	<u>4457</u>		

NDSLP CSS

Name of Scholarship or Name of Donor	Eligibility	Amount	Apply to
Des Moines Women's Club	Graduate from Polk County high school and study music or drama, speech at Drake.	\$200	Mrs. W. A. Jennings Chairman, Scholarship Committee, Hoyt Sher- man Place, Des Moines
Saul Davidson Scholarship	Entering freshmen of Jewish faith, grad- uate of Des Moines school, high scholas- tic record and need.	\$200	Director of Financial Aid

Name of Scholarship or Name of Donor	Eligibility	Amount	Apply to
Drake University Scholarship	Entering freshmen of high scholarship, promise of usefulness, professional and community life, need.	Varies with need up to full tuition.	Director of Financial Aid
Hagan Scholarship	Need--awards to ambitious, worthy persons who could not go to college without aid.	\$200 per year, renewable if grades are 3.0 or above.	Same as above
Special high school honor scholarship	Awarded competitively, scholastic ability, need, evidence of leadership and promise of success in college.	\$312.50	Same as above
Ellis I. Levitt Scholarship	Men with academic ability and need.	Varies according to need, renewable if grades are 3.0 or higher.	Same as above
Mary Carpenter Shreck Scholarship	Academic achievement scholarship and need.	\$200 renewable on basis of continued need and grade point of 3.0	Same as above
Velma Stevens Scholarship	Women who must have financial assistance to attend Drake. Academic achievement, scholarship, need.	\$200 renewable if need continues and maintain grade point of 3.0.	Same as above
Katheryn Van Meter Loan Fund	Men and women all classes.	\$200 per semester.	Same as above
Douglas Ewing Scholarship	Major in mathematics or physics.	\$300	Same as above
Phi Beta Kappa Scholarship	Des Moines freshmen at Drake.	\$300	Same as above
Theta Sigma Phi Scholarship	Des Moines women majoring in journalism.	\$50	Director of Financial Aid--Drake University
First Federal State Bank Scholarship	Iowa high school graduate in upper 10% of high school class. Active in extra-curricular activities, recommendation of high school principal, need, enroll in college of business.	Full tuition, renewable if maintains "B" average.	Same as above

DRAKE UNIVERSITY (continued)

Name of Scholarship or Name of Donor	Eligibility	Amount	Apply to
College of Fine Arts Honor Scholarship	Upper 1/3 of high school class--unusual proficiency in field of music, drama or art.	Varies according to need.	Dean of College of Fine Arts
College of Fine Arts Band, Orchestra, and Choral Groups	Limited number of grants to persons with unusual talents in these fields.		Same as above
Central Iowa Band Association Scholarship	Major in band instrument.	Varies	Same as above
Christian Science Scholarship	Membership in First Church of Christ Scientist of Boston, Massachusetts, or a branch church, enrolled in Fine Arts, if no fine arts applicant, may go to member of Christian Science Church in other college at Drake.	\$100	President of University and Dean of College of Fine Arts
Des Moines Symphony Orchestra Grants	Outstanding instrumentalist in orchestra. Anyone may audition.		Dean of College of Fine Arts
Edwin B. Garrigues Foundation Scholarship	Musical talent and need.	Varies	Same as above
Monroe Band Scholarship	Band instrument major--talent, need.	Varies	Same as above
Monroe Drama Scholarship	Talent in drama and speech, need.	Varies	Same as above
Phi Mu Alpha Music Scholarship	Male freshmen--music major, musical talent, academic ability, need.	\$100	Same as above
Presser Foundation Scholarship	Music students--preference given to those preparing to teach.		Dean of College of Fine Arts
Nineteen difference scholarships available to students registering in College of Fine Arts	High scholastic record in high school, unusual proficiency in field of music, drama, speech, or art.	Varies according to need.	Apply to Dean of College of Fine Arts, Drake University. Application will be considered for all scholarships administered by the college.

DUBUQUE THEOLOGICAL SEMINARY
 Dubuque, Iowa 52001
 Founded 1852

Theological Seminary under United Presbyterian Church, U.S.A. Seminary is accredited by the American Association of Schools of Religious Education. Offers four years of graduate work in Theology leading to Bachelor of Divinity and Master of Sacred Theology, granted 30 Bachelor of Divinity degrees in 1963.

1963-1964		1964-1965	
Enrollment		Costs	
Men	195	Tuition	\$ 570
Women	5	Room-Bd.	610
	<u>200</u>	Fees	20
			<u>\$1200</u>

NO SCHOLARSHIPS FOR UNDERGRADUATES

#####

EAGLE GROVE JUNIOR COLLEGE
 Eagle Grove, Iowa 50533
 Founded 1928

Two year liberal arts college, under community school board, accredited by 3, granted 41 Associate of Arts degrees in 1963.
 Carl E. Thorson, Dean

1963-1964		1964-1965	
Enrollment		Costs	
Men	96	Tuition	\$180
Women	33	Fees	20
	<u>129</u>		<u>\$200</u>

NDSL P

Name of Scholarship or Name of Donor	Eligibility	Amount	Apply to
Board of Education	Valedictorian from high school at Clarion, Rowan, Goldfield, Renwick, Humboldt, Twin Rivers, LuVerne, Kanawha, Corwith-Wesley.	Tuition.	Dean of the College
Pete Prehm Loan Scholarship	Worthy Students.	Not stated.	Dean of the College
Eagle Grove Rotary Club and Women's Club	Loan to Junior College students.	As needed.	Dean of the College
Eagle Grove Lions, VFW, Rotary, Equality Club, VFW Auxiliary, Business and Professional Men, Beta Sigma Phi Sorority.	Worthy students in Eagle Grove Junior College.	Varies.	Dean of the College

ELLSWORTH COLLEGE
Iowa Falls, Iowa 50126
Founded 1890

Two year college under Iowa Falls Community School Board and Ellsworth College Foundation. Accredited by 1 and 3. Offers courses in liberal arts, business, including one year secretarial course, mid-management, and adult education. Awarded 75 Associate of Arts degrees in 1963. Verle Stucker, Dean - 1100 College Avenue.

1963-1964		1964-1965	
Enrollment		Costs	
Men	325	Non-Res. Tuition	\$200
Women	133	Resident Tuition	190
	458	Fees	20
			\$210 - \$220

NDSL P

Name of Scholarship or Name of Donor	Eligibility	Amount	Apply to
Trustees Loan Fund	To qualified Ellsworth students.	According to need.	Mrs. Frank Wall, 822 College, Iowa Falls
Iowa Falls businesses, organizations, private citizens, cooperate in providing funds for scholarships.	To qualified Ellsworth students, scholastic record, need, leadership and character.	From \$75 to full tuition--22 scholarships.	Office of the Dean
College Board scholarships	Athletic ability.	Six to eight scholarships available.	Same as above

#####

EMMETSBURG COMMUNITY COLLEGE
Emmetsburg, Iowa 50536
Founded 1930

Two year liberal arts college under community school board, accreditation 1 and 3. Granted 18 Associate of Arts degrees in 1963. Edward L. Holst, Dean.

1963-1964		1964-1965	
Enrollment		Costs	
Men	48	Non-Res. Tuition	\$220
Women	35	Resident Tuition	180
	83		

NDSL P

Name of Scholarship or Name of Donor	Eligibility	Amount	Apply to
Emmetsburg Chamber of Commerce	Graduate of Palo Alto High School, scholastic ability, need, and desire to continue education.	\$50--8 scholarships available.	Education Committee of Chamber of Commerce
Emmetsburg Business organizations and private individuals		Provide 22 scholarships up to \$130.	Dean of the College

ESTHERVILLE JUNIOR COLLEGE
Estherville, Iowa 51334
Founded 1924

Two year liberal arts college under community school board, accreditation 3, granted 46 Associate of Arts degrees in 1963. Offers courses in liberal arts, business, adult education. Arvil C. Parks, Dean.

1963-1964		1963-1964
<u>Enrollment</u>		<u>Costs</u>
Men	142	\$210
Women	62	
	<u>204</u>	

NDSL P

Name of Scholarship or Name of Donor	Eligibility	Amount	Apply to
Iowa Trust and Savings Bank	One boy and one girl graduate of Estherville High School in upper $\frac{1}{2}$ of class.	\$100	Chosen by members of class.
Wa-Tan-Ye Club	Scholarship for one girl.	Tuition and fees for 1 year-- $\frac{1}{2}$ per semester.	Dean of the College
Estherville Women's Club	Girl graduate of Estherville High School, to be used in Estherville Junior College.	\$100	Same as above
Estherville VFW and VFW Auxiliary	Graduate of Estherville High School in upper $\frac{1}{2}$ of class.	Full tuition.	Same as above

#####

FORT DODGE COMMUNITY COLLEGE
Fort Dodge, Iowa 50501
Founded 1921

Two year college under community school board, accreditation 3, offers liberal arts, business and adult education. Granted 93 Associate of Arts degrees in 1963. Louis R. Newsham, Dean

1963-1964		1963-1964
<u>Enrollment</u>		<u>Costs</u>
Men	326	Tuition-Fees \$200
Women	169	Non-resident 220
	<u>495</u>	

Name of Scholarship or Name of Donor	Eligibility	Amount	Apply to
Board of Education Community Scholarship Fund	At least 2.0 high school average, outstanding performance in extra-curricular activity.	Varies.	Scholarship Committee and faculty.

FORT DODGE COMMUNITY COLLEGE (continued)

Name of Scholarship or Name of Donor	Eligibility	Amount	Apply to
Kiwanis Loan Fund	For emergency and short-term loans to Fort Dodge Community College students.	Varies as need, limit 1 semester tuition plus books.	Richard Ludberge First Federal Savings and Loan Company, Fort Dodge
Shrine Club	High school graduates outside of Fort Dodge in upper ½ of class and good activity record.	½ tuition for 1 year.	College
Webster County Salvage Board	Child of World War I veteran.	Full tuition for 1 year, renewable and 2 available.	John Mecklenberg County Superintendent Webster County Schools Fort Dodge, Iowa

#####

GRACELAND COLLEGE
Lamoni, Iowa 50140
Founded 1895

Four year liberal arts college under Reorganized Church of Jesus Christ of the Latter Day Saints. Offers religion major, grants Associate and Bachelor of Arts degrees. In 1963 granted 184 Associates and 57 Bachelor's degrees.
Director of Public Relations
NDSL P

1963-1964		1964-1965	
Enrollment		Costs	
Men	460	Tuition	\$ 955
Women	428	Room-Bd.	615
	888	Fees	10
			<u>\$1580</u>

Name of Scholarship or Name of Donor	Eligibility	Amount	Apply to
No scholarships listed, but employment and loans are available.	ACT test battery must have at least "C" average.	Up to \$400 per year, repaid in monthly installments beginning 5 months after graduating from college. No interest if payments are made promptly.	Director of Admissions

GRANDVIEW COLLEGE
 East 9th and Grandview Street
 Des Moines, Iowa 50319
 Founded 1896

Two year liberal arts college under Lutheran Church in America, accreditation 1.
 Granted 21 Associate of Arts degrees and 63 Junior College diplomas in 1963.
 Admissions Office

	1963-1964		1964-1965
	<u>Enrollment</u>		<u>Costs</u>
Men	625	Tuition	\$ 450
Women	320	Room-Bd.	600
	<u>945</u>	Fees	70
			<u>\$1120</u>

NDSLPL

Name of Scholarship or Name of Donor	Eligibility	Amount	Apply to
Des Moines Women's Club	Boy or girl from Polk County to attend Grandview and study humanities.	\$200	Mrs. L. A. Jennings, Chairman-Scholarship Committee, Hoyt Sher- man Place, Des Moines.
S. N. Nielsen Scholarship and Mary Seely Knudstrup	Scholastic achievement and need financial assistance.		Office of Admissions Scholarship Committee Grandview College
Freshmen Scholarships	Upper 15% of high school graduating class or upper 15% of ACT.	\$100 second semester.	Same as above
George Dupont-Hansen Scholarship	Scholarship, character, need, preference to pre-seminary students.	\$100	Same as above
District 5 Women's Missionary Society of American Evangel- ical Lutheran Church	Women living in District 5 with scholar- ship, character, need.	\$100	Same as above
Other unnamed scholarships are available	Need	Varies according to need.	Same as above

#####

GRINNELL COLLEGE
 Grinnell, Iowa 50115
 Founded 1846

Four year liberal arts college, under private corporation, accredited by 1 and 2,
 granted 235 Bachelor of Arts degrees in 1963. Robert Sauers, Director of Admissions

	1963-1964		1964-1965
	<u>Enrollment</u>		<u>Costs</u>
Men	625	Tuition	\$ 1590
Women	525	Room-Bd.	820
	<u>1150</u>	Fees	90
			<u>\$ 2500</u>

GRINNELL COLLEGE (continued)

NDSLPS CSS

Name of Scholarship or Name of Donor	Eligibility	Amount	Apply to
Trustee Honor Scholarship	Excellent character, high academic ability, outstanding leadership qualities, scholastic aptitude, test of CEEB and need.	Up to \$1400 per year awarded a year at a time. Renewal based on college record and continued need.	Faculty committee on student aid
Grinnell Honor	Same as above	Up to \$1200 per year	Same as above
Alumni Scholarship and grants-in-aid		Up to \$1100 per year	Same as above
Memorial Awards	Children of alumni who lost lives in Armed Services during World War II.	Full tuition	Same as above
Special grants-in-aid	Grants-in-aid to worthy students in combination with employment or loans.	Varies	Same as above
Endowed Scholarship Funds	\$542,000 endowment the income from which is used to furnish financial aid to students who need it.	Varies	Faculty Committee on Student Aid
Annual gifts from individuals, firms, organizations, and foundations.	Money from these sources administered by the college.	Varies	Same as above

#####

IOWA STATE UNIVERSITY OF SCIENCE AND TECHNOLOGY

Ames, Iowa 50009

Founded 1858

Land grant university. Under State Board of Regents. Accredited by 1 and 2, also a member of the American Association of Land Grant Colleges and Universities, State Universities Association. Colleges of agriculture, home economics, engineering, science and humanities, veterinary medicine, and graduate college. Grants Bachelor of Science, Master of Science, Master of Vocational Education, Master of Landscape Architecture, Master of Engineering, Doctor of Veterinary Medicine, Doctor of Philosophy. 1963 degrees: 1,390 baccalaureate 270 Masters, 174 Doctorals, 57 Doctor of Veterinary Medicine.

1963-1964

Enrollment

Men 7231

Women 2481

9712

Grad.M. 1583

Grad.W. 222

11,517

1963-1964

Costs

Res. Tuition \$297

Non-resident 600

Room-Board 660

Res.--957

Non-res.--1260

IOWA STATE UNIVERSITY (continued)

NDSL P

Name of Scholarship or Name of Donor	Eligibility	Amount	Apply to
Alumni Achievement Fund Scholarship	Superior scholastic, need, character.	\$297	High school Principal or scholarship com- mittee, 101 Building H.
Alcoa Achievement Award	Same as above and must live in Iowa	\$500--1 available	
Athletic Grants-in-Aid	Rank upper 2/3 of high school graduating class, percentile of at least 50 on na- tional norms on MVIAA scholastic ability test.	Not over fees, tui- tion, books, room and board, and \$15 per month for laundry and incidentals.	Department of Athletics
James W. Bell Company Inc. Scholarship	Freshmen in science or engineering. Grad- uate of Iowa high school, scholarship, need, recommendation of high school Prin- cipal, must maintain 3.0 grade point average.	\$1200 per year for 4 years.	No application, the selection is made by the Scholarship Committee.
Inter-Fraternity Council Scholarship	Freshmen, scholarship, leadership.	\$100	Scholarship Committee 125 Beardshear Hall
Lane-Wells Scholarship	For college freshmen, superior scholar- ship, need, character and leadership.	\$150	Scholarship Board
Ruth Ellen Newton, Journalism Scholarship	Freshmen journalism student, need, character, scholarship.	\$300 per year	Technical Journalism Department
Mary Huncke Student Aid Fund	Character, need, sincere desire to secure a college education.	Up to \$500 and is a interest-free loan to be repaid after leaving Iowa State University.	Awards and Scholarship Committee

IOWA STATE UNIVERSITY (continued)

Name of Scholarship or Name of Donor	Eligibility	Amount	Apply to
Veisha Scholarship	Scholarship, leadership, need, must be resident of Iowa.		Career Day Director Veisha Central Committee.
Ward Scholarships	Members of Ward system, scholarship, need, participation in Ward system (organization of students living off campus) freshmen and sophomores.	\$231	Memorial Union, Ames Faculty Advisors
AGRICULTURE			
Agricultural Marketing Management Scholarship established in 1954 by Farmers Elevator Service Company, Farmers Grain Dealers Association of Iowa, Quaker Oats Company, Western Grain and Feed Association.	Scholarship, leadership, character, need, a major in marketing management.	\$250	Awards and Scholarship Committee, College of Agriculture, 121 Curtiss Hall.
Aluminum Company of America	Scholarship, need, live in Iowa, freshmen scholarships.	\$250--5 available in agriculture.	Same as above
Cooperative Education Scholarship	Resident of Cedar, Clinton, Jackson, Muscatine, or Scott counties, must work summers for one of the sponsors. Freshmen in agricultural business, marketing management.		Awards and Scholarship Committee, College of Agriculture, 121 Curtiss Hall.
Delicious Apple Tree Scholarship	Freshman boy or girl in Horticulture, need, character, scholarship.	\$200	No application, awards made by Horticulture Department during Winter quarter.
Federated Garden Clubs of Iowa, Inc.	Scholarship.	\$75 per year.	Federated Garden Clubs

IOWA STATE UNIVERSITY (continued)

Name of Scholarship or Name of Donor	Eligibility	Amount	Apply to
Federal Land Bank of Omaha	Freshmen--Iowa farm boy, character, upper 1/3 of high school graduating class, interest and aptitude in school and community activities, 300 word essay on "Influence of Federal Land Bank and National Farm Loan Association in Improving Agriculture in My Community."	\$300	College Awards and Scholarship Committee
Iowa Florists Society	Need, scholarship, character, leadership, undergraduate enrolled in Horticulture.	\$250	Awards and Scholarship Committee, College of Agriculture, 121 Curtiss Hall.
Iowa Master Farmers Club Scholarship	Freshmen in agricultural journalism, promise of ability in journalism, need, scholarship, Iowa high school graduate preferably with a farm background.	\$200	Dairy and Food Industry Department
Iverson Honorary Dairy Industry	Freshmen in Dairy Industry, scholarship, need, character, active in high school and community affairs, must have one quarter of residence in I.S.U.	\$300	Dairy and Food Industry Department
Knights of Ak-Sar-Ben	Freshmen--scholarship, need, character, school and community activities, resident of Iowa counties from which livestock was exhibited at Ak-Sar-Ben Livestock Show the previous year.	\$600	College Awards and Scholarship Committee
Louis Rich Foods Inc. Scholarships	Need, scholarship, character, undergraduate in poultry science.	\$300 per year,	Same as above
Ortho Agronomy Scholarship	Agronomy freshmen. Need, scholarship, character, leadership.	\$300 freshmen year, \$200 each next two, \$300 senior year,	Same as above

IOWA STATE UNIVERSITY (continued)

Name of Scholarship or Name of Donor	Eligibility	Amount	Apply to
Iowa Dairy Industry Committee and American Dairy Association of Iowa	Annual scholarship to the girl selected as Iowa Dairy Princess.	\$250 for 1 year.	County Extension Director prior to September 15. Selection made by State 4-H Club Office.
Kroger Company	Scholastic achievement and leadership--need agriculture and home economics major.	\$250	The college
Moorman Manufacturing Company Scholarship	Scholarship, character, need, sincere interest in agriculture.	3-freshmen \$300. 3-sophomore \$200.	College Awards and Scholarship Committee
Mortensen Memorial Dairy Industry Scholarship	Freshmen in Dairy Industry, scholarship, need, character, high school and community activities, registering first time at Iowa State University.	\$300	Dairy and Food Industry Department
Poultry Industry Scholarship	Freshmen and transfer students in poultry, husbandry, must be resident of Iowa, interested in poultry industry.	\$300	Poultry Husbandry Department
Sears, Roebuck Foundation 4-H Poultry Scholarship	Freshmen enrolled in agriculture or home economics. Must be resident of Iowa and interested in poultry and have completed 4-H Flock Project, 4-H record and achievement.	\$300--may be renewed.	Awards and Scholarship Committee, College of Agriculture, 121 Curtiss Hall.
Sears, Roebuck Foundation Scholarship	Scholarship, need, boys who have shown an interest and aptitude in high school and community activities and have deep interest in agriculture.	\$300	Same as above
Smith-Douglas Company Inc. Scholarship	Freshmen in agronomy, rural male resident of Iowa, need, character, leadership in agriculture, interest and aptitude in high school and community activities, preference to boys with 3 years membership in 4-H or FFA.	\$400 freshman year \$200 each year for 3 years. For renewal must be in upper 1/3 of class in Agronomy.	Same as above

IOWA STATE UNIVERSITY (continued)

Name of Scholarship or Name of Donor	Eligibility	Amount	Apply to
J. R. Watkins Company 4-H Scholarship	Resident of Iowa entering Iowa State Uni- versity for first time, well-balanced, and with an excellent 4-H record, need and scholarship.	\$150	County Extension Di- rector prior to Sep- tember 15. Selection made by State 4-H Club Office.
ENGINEERING			
American Institute of Steel Construction Inc.	A boy or girl whose high school record is adequate to admit him or her to one of the departments accredited by Engineers Council for Professional Development, Essay and college entrance board tests required.	\$1000	College of Engineers 104 Marston Hall, Ames, Iowa
Leo A. Daly Scholarship	Demonstration of promise of high level performance in building design--undergraduate in architecture and architectural engi- neering.	\$250	Architecture and Architectural Engineers Department
Engineers Club of Des Moines Scholarship	Graduate of one of five Des Moines High Schools--outstanding scholarship, need.	\$297	Engineers Club of Des Moines
Engineers Club of Sioux City Scholarship	Graduate of a Sioux City High School, scholarship, need, citizenship.	\$297	Scholarship Committee Engineers Club
E. W. Bliss Scholarship	Need and ability.	\$750 per year.	Awards and Scholarship Committee, College of Engineering, 104 Marston Hall, Ames.
Fisher Foundation Scholar- ship	Undergraduate in chemical, electrical or nuclear engineering.	\$297 per year.	Same as above
Frank W. Griffith Educational Award	Architecture student, need.	\$500 per year.	Same as above
Aluminum Company of America	Scholarship, need, live in Iowa, freshmen scholarships.	\$250--5 available in engineering.	Scholarship Committee

IOWA STATE UNIVERSITY (continued)

Name of Scholarship or Name of Donor	Eligibility	Amount	Apply to
Henning H. Hennington Memorial Scholarship	Resident of rural community to begin career in engineering--need, scholastic ability, preference to freshmen in elec- trical engineering.	\$297	Engineering Scholarship Committee, 104 Marston Hall
Monsanto Chemical Company Scholarship	Chemical engineering major--scholarship, personal qualifications, need, freshmen and seniors.	\$250	Same as above
Herman W. Nelson Memorial Scholarship	Freshmen entering College of Engineering.	\$500	Nominated by University and interviewed by representative of American Air Filter Foundation Inc.
Union Carbide Engineering Scholarship	Freshmen in chemical or mechanical en- gineering, scholarship, personal reputa- tion and recommendation of high school authorities.	\$500 per year for 4.	Scholarship and Awards Committee, College of Engineering
HOME ECONOMICS			
Freshmen Home Economics Scholarship	Upper $\frac{1}{2}$ of high school graduating class, registered first time at Iowa State U., active in high school, community, church, programs, need.	\$100	ISU Home Economics Scholarship and Awards Committee
Gamma Phi Beta Scholarship	Freshmen--scholarship, merit, need.	\$200	Same as above
Iowa County Extension Home Economics Association Schol- arship	Freshmen--resident of Iowa, scholarship, need, interest and aptitude in field of Home Economics as shown by active partici- pation in Home Economics 4-H work. Ex- pects to attend and graduate from ISU and enter career in extension work.	\$200	Same as above
Millie Kalsem Scholarship	Home Economics major.	\$100	Awards and Scholarship Committee, Home Economics Department

IOWA STATE UNIVERSITY (continued)

Name of Scholarship or Name of Donor	Eligibility	Amount	Apply to
Catherine MacKay Scholarship	Freshmen--upper $\frac{1}{2}$ of high school class, registered first time at ISU, active in community, school and church programs. Need.	\$252 or out of state tuition.	ISU Home Economics Scholarships and Awards Committee
Phi Epsilon Omicron Scholarship	Freshmen or sophomore scholarship, leadership, character, financial need.	\$100	Same as above
Sears Roebuck Foundation Scholarship	Freshmen upper $\frac{1}{2}$ of high school class, registered for first time at ISU. Must have participated in 4-H Club or Future Homemaker Activities, community, school and church program, need.	\$300	Same as above
J. R. Watkins Company 4-H Scholarship	Freshmen resident of Iowa entering ISU for first time basis of selection well-balanced and excellent 4-H Club record, need and scholarship.	\$150	County Extension Director, selection made by 4-H Club office.

MISCELLANEOUS

Bishop-Stoddard Cafeteria Company Scholarship	Outstanding qualifications for becoming exceptionally good restaurant man. Primary interest in fine food, pleasing the public and working with and directing employees.	\$300	Thomas Walsh, Institution Management Department or Bishop-Stoddard Cafeteria Company.
Iowa Motor Truck Association Inc.	Student at ISU to major in transportation.	\$500 (May be divided into aid for more than one student).	W. H. Thompson, Professor of Transportation
W. I. Griffith Radio-Television Scholarship	Freshmen on Telecommunication arts. Upper $\frac{1}{2}$ of high school class. Interested in school and out, in radio and television.	\$100	Professor in charge of Telecommunication Arts. 102 Building F.

VETERINARY MEDICINE

Burton C. Thomson Scholarship	Freshmen, integrity, scholarship, adaptability.	\$100	Honors & Awards Comm. College of Veterinary Medicine.
-------------------------------	---	-------	---

289622
IOWA WESLEYAN COLLEGE
Mount Pleasant, Iowa 52641
Founded 1842

Four year liberal arts college, Methodist affiliation, accredited by 1 and 2, grants Baccalaureate degrees in arts, in science and in music education. 143 Bachelor's degrees granted in 1963.

1963-1964		1964-1965	
Enrollment		Costs	
Men	418	Tuition	\$ 800
Women	285	Room-Bd.	690
	703	Fees	90
			<u>\$1580</u>

NDSL P CSS

Name of Scholarship or Name of Donor	Eligibility	Amount	Apply to
Robert Charles Bruce Memorial Scholarship	Scholarship and need--preference to applicants from Keosauqua and surrounding territory.	\$400 per year.	Office of Admissions
Burlington District WSCS	Students planning to enter church related vocations.	\$300 per year.	
Harlan Awards	Need, scholarship "C" or better.	Up to $\frac{1}{2}$ tuition.	Same as above
Iowa Wesleyan College Scholarship	Outstanding students and need, also scholarships for sons and daughters of ministers and students preparing for ministry.	Up to full tuition renewable if average is "B" or better.	Office of Admissions
Mediapolis Community Scholarship Fund	Graduate of Mediapolis High School, unmarried, scholastic ability, need, character.	\$375 per year--2 available.	
Methodist Loans and Scholarships	Member of Methodist Church.	Varies to \$500 a year.	Dean of Student Personnel Services
New London State Bank	Graduate of New London High School with scholastic ability, need and character.	\$250 first year \$200 second year \$150 third and fourth.	
Presser Foundation	Scholarship and need must have at least 2/3 of college course in music.	\$400 per year.	
Ministerial Reductions	Dependent children of Methodist ministers Dependent children of ministers of other recognized denominations.	50% of tuition. \$150 per year.	Admissions Office

IOWA WESLEYAN COLLEGE (continued)

Name of Scholarship or Name of Donor	Eligibility	Amount	Apply to
Ministerial Reductions	Students preparing for Methodist ministry and not receiving other award.	50% of tuition--must sign note at 4% interest payable 5 years after graduation if not in Methodist ministry.	Office of Admission
	Student preparing for ministry in another denomination.	Reduction of \$75 per semester under terms above if not in ministry.	
Grace Wallar Pescheret Scholarship	Scholarship and need.	\$250 for 1 year.	Office of Admission
Harry A. and Stella Weshard	Scholastic ability, need, character.	\$400 for a year.	Same as above

#####

KEOKUK COMMUNITY COLLEGE
Keokuk, Iowa 52632
Founded 1953

Two year college under community school board accredited by 3, offers liberal arts, pre-professional, general business, granted 40 Associate of Arts degrees in 1963. James A. McKinstry, Dean, 727 Washington, Keokuk, Iowa.

	1963-1964	1964-1965
Enrollment		<u>Costs</u>
Men	137	Tuition:
Women	65	\$220 - Resident
	<u>202</u>	\$280 - Non-resident
		Plus 400 at night school.

Name of Scholarship or Name of Donor	Eligibility	Amount	Apply to
Garfield P.T.A.	Keokuk High School graduate who intends to teach.	Tuition.	College
Keokuk Business and Professional Women's Club Scholarship	One graduate of Keokuk High School and one graduate of Cardinal Stritch High School.	Two years tuition.	

KEOKUK COMMUNITY COLLEGE (continued)

Name of Scholarship or Name of Donor	Eligibility	Amount	Apply to
Keokuk Lions Club		Tuition for one year,	
Keokuk Rotary Club Scholarship	Preference to local boy.	Tuition for one year and may be renewed for second year.	
Montrose Chamber of Commerce	Academic achievement, service, need, leadership, character.		
Wells-Carey P.T.A.	Keokuk High School graduate with preference to former Wells-Carey Elementary pupil.	Tuition	Principal of Keokuk High School

#####

LORAS COLLEGE
Dubuque, Iowa 52001
Founded 1839

Four year liberal arts college for men, private corporation with Catholic affiliation, accredited by 1 and 2, granted 235 baccalaureate degrees in 1963. Gerard B. Noonan, Registrar	1963-1964	1964-1965
	<u>Enrollment</u>	<u>Costs</u>
	Men 1372	Tuition \$ 745
		Room 750
		<u>\$1495</u>

CSS

Name of Scholarship or Name of Donor	Eligibility	Amount	Apply to
Loras Scholarships not separated donors	Large number of memorial scholarship funds administered by the college. Awards on basis of need and results of CEEB and ACT.	Full and partial tuition.	Dean of Studies or apply to CEEB, P.O. Box 592, Princeton, New Jersey and ask that returns be sent to Loras College.
Dubuque Bank and Trust Company	1 to a senior in Dubuque High School. 1 to a senior in Wahlert High School,	\$100 each for 1 year Renewable by college Same as above.	Determined by high school Same as above

LUTHER COLLEGE
Decorah, Iowa 52101
Founded 1861

Four year liberal arts college under American Lutheran Church, accredited by 1 and 2, granted 266 Bachelor of Arts degrees in 1963.
Karl H. Nordgaard, Director of Admissions

1963-1964	
Enrollment	
Men	672
Women	543
<u>1,215</u>	

1964-1965	
Costs	
Comprehensive	
Fee:	\$1750

NDSLP CSS

Name of Scholarship or Name of Donor	Eligibility	Amount	Apply to
Luther College Honor Scholarship	Top 10% of high school graduating class and 70th percentile on ACT program. Can be renewed if a 2.0 average is maintained.	\$100 unless there is special need and then may go to maximum of \$500. 75 available.	Director of Admissions
Faculty Scholarship	Academic excellence, potential, character, and need. Pupil must maintain 2.0 average for renewal.	Up to \$2000 for 4 years and 9 available.	Same as above
Luther College Grants-in-Aid Fund	Limited number based on need if high school record test scores and recommendations indicate promise of high achievement.	Depends on need. \$100 to \$500.	Same as above

#####

MARSHALLTOWN COMMUNITY COLLEGE
Marshalltown, Iowa 50158
Founded 1927

Two year college under community school district. Accredited by 3. Offers liberal arts and vocational courses. Granted 67 Associate of Arts degrees in 1963.
George W. Bowman, Dean.

1963-1964	
Enrollment	
Men	214
Women	142
<u>356</u>	

1964-1965	
Costs	
Res. Tuition-Fees	\$220
Non-resident	250

NDSLP

Name of Scholarship or Name of Donor	Eligibility	Amount	Apply to
Ray Engel Scholarships	Scholarship, citizenship, leadership, and character.	Three full tuition to freshmen and three to sophomores.	Dean of College

MARSHALLTOWN COMMUNITY COLLEGE (continued)

Name of Scholarship or Name of Donor	Eligibility	Amount	Apply to
Fisher Foundation	Three to outstanding graduates of Marshalltown High School and three to other outstanding junior college freshmen.	Full tuition.	Dean of the College
G-Y Scholarship	Girl graduate of Marshalltown High School.	Tuition and activity fee,	Same as above
Hi-Y Scholarship	Boy graduate of Marshalltown High School.	Tuition and book cost.	Same as above
Kiwanis Club Scholarships	Graduates of Marshalltown High School.	Full tuition and activity fee.	Same as above
Knock Memorial Scholarship	Graduate of Marshalltown or St. Mary's High Schools, need.	Tuition for freshmen.	Same as above
Legion of Guardsmen Scholarship	To high school senior boy who is in need, outstanding athlete given preference.	Full tuition and fees.	Same as above
Marshalltown American Legion Frank L. Glick Post #46	Boy graduate of Marshalltown High School who is an above average scholar, civic attitude and need.	Tuition plus activity fee, renewable second year.	American Legion Post #46, Marshalltown
Marshalltown Junior Chamber of Commerce	Graduate of a Marshall County High School in upper $\frac{1}{2}$ of class, satisfactory citizenship, and need.	One tuition for freshmen year.	Dean of the College
Marshalltown Legion Aux- iliary	Girl graduate of Marshalltown High School with above average scholarship, civic attitude and need.	Tuition plus activity fee, renewable second year.	American Legion Auxiliary, Marshalltown
Mead Scholarship	High school senior in Marshalltown area with merit and need. Preference to son or daughter of an employee of donor.	Tuition, fees, and books. Renewable.	Dean of the College
B. R. Miller Scholarship Lions Club	Graduate of a Marshall County High School with good scholastic record and need.	Tuition and activity fee.	Same as above
Opti-Mrs Club	Marshall County girl to attend Marshalltown Junior College, need and scholastic ability.	One year tuition.	Opti-Mrs Club

MARSHALLTOWN COMMUNITY COLLEGE (continued)

Name of Scholarship or Name of Donor	Eligibility	Amount	Apply to
William S. Reed Scholarship	Graduate and resident of city of Marshalltown, scholarship, character, extra-curricular activities and need.	Tuition for 1 girl and 1 boy.	Trustees of the fund
Martha Ellen Tye Scholarship	Outstanding high school graduate or junior college freshmen with scholastic achievement, leadership, character, citizenship, and need.	5--\$200 scholarships.	Dean of the College
Paul Wolfe Sportsmanship Scholarship	Outstanding sportsmanship selected by Marshalltown Club.	2 year tuition.	No applications

#####

MARYCREST COLLEGE
Davenport, Iowa 52803
Founded 1939

Four year liberal arts college for women, under private corporation with Catholic affiliation, accredited by 1 and 2, granted 149 Bachelors degrees in 1963. Also offers Bachelor of Science in Nursing.

1963-1964	1964-1965
<u>Enrollment</u>	<u>Costs</u>
Women 1,008	Tuition \$ 700
	Room-Bd. 900
	\$1600

NDSL P CSS

Name of Scholarship or Name of Donor	Eligibility	Amount	Apply to
Fine Arts Scholarship	Excel in music, art or drama, audition or have certified statement of merit.	Up to \$1000.	Director of Admissions
Honor Scholarships	Scholarship, character, personality, upper 1/5 of high school class and SAT test.	Up to \$800.	Same as above

MASON CITY JUNIOR COLLEGE
Mason City, Iowa 50401
Founded 1918

Two year college under Mason City Independent school board. Accredited by 1 and 3, granted 199 Associate of Arts degrees in 1963. Offers courses in liberal arts, pre-professional, business, pre-medical, practical nursing, drafting, electronics technologies. C. H. Beem, Dean

	1963-1964	1964-1965
	<u>Enrollment</u>	<u>Costs</u>
	Men 607	Resident \$197
	Women 298	Non-res. 237
	Unclassified 4,864	
	5,769	

NDSL P

Name of Scholarship or Name of Donor	Eligibility	Amount	Apply to
American Association of University Women	Students to Mason City Junior College.	½ tuition	College Scholarship Committee
Beta Sigma Phi	Same as above.	1 full tuition	Same as above
Business and Professional Women	Same as above.	1 tuition	Same as above
Catholic Daughters	Same as above.	1 full tuition	Same as above
Cooper Cap and Gown Company	Same as above.	½ tuition	Same as above
Decker Credit Union	Same as above.	\$50 plus full tuition	Same as above
Federation of Labor	Same as above.	1 full tuition	Same as above
First National Bank	Same as above.	2 full scholarships	Same as above
Forty and 8 Club	Same as above.	1 full tuition	Same as above
High Twelve Club	Same as above.	Tuition	Same as above
Kiwanis Club	Same as above.	Varies	Same as above
Lions Club	Same as above.	2 full tuition	Same as above
Mercy Hospital	Same as above.	2 full scholarships	Same as above
Panhellenic and P.E.O.	Junior College girl.	Up to \$350	

MASON CITY JUNIOR COLLEGE (continued)

Name of Scholarship or Name of Donor	Eligibility	Amount	Apply to
Patterson-James	Students to Mason City Junior College	3--\$25 scholarships 1--\$50 scholarship	College Scholarship Committee
Wa-tan-ye	Same as above	\$200	Same as above

#####

MORNINGSIDE COLLEGE
Sioux City, Iowa
Founded 1894

Four year liberal arts college, affiliated with Methodist Church. Accredited by 1 and 2. Grants baccalaureate degrees in arts, science, music and music education. Granted 230 Bachelor's degrees in 1963. Robert Miller, Director of Admissions.

1963-1964		1964-1965	
Enrollment		Costs	
Men	719	Tuition	\$ 750
Women	489	Room-Bd.	660
	1,208	Fees	120
			<u>\$1530</u>

NDSLP CSS

Name of Scholarship or Name of Donor	Eligibility	Amount	Apply to
Competitive Education Scholarship	High scholastic record--high score on ACT or CEEB program.	Varies up to full tuition.	College Scholarship Service, Box 176, Princeton, New Jersey
Grants-in-Aid	Large number of aids in areas of music, speech, and athletics, ministerial, Christian service, grants, more than one unmarried student from same family.	Varies	Director of Admissions Morningside College
Grant to students preparing for church related vocations.	Must be planning to enter fulltime Christian service and maintain average of "C+", must sign a note to be repaid if student is not in church work within 2 years after graduation.	½ tuition	Same as above
	Women entering Christian service must be approved by local and district officials of WSCS or similar organization if not Methodist, grade average of at least 2.25.	Same as above	Same as above

MORNINGSIDE COLLEGE (continued)

Name of Scholarship or Name of Donor	Eligibility	Amount	Apply to
Grant to students preparing for church related vocations.	Son or daughter or wife of fulltime or- dained ministers or missionaries.	½ tuition	Director of Admissions Morningside College
Honor Scholarships	Upper 10% of high school graduating class	\$100 per year for 4 years.	College Scholarship Service, Box 176, Princeton, Jew Jersey (High school counselors should have application blanks. Must apply by April 1.)
Presidential Scholarship	Methodist applicants who meet qualifica- tions for competitive scholarship.	Varies	President reviews application blanks and makes awards.

#####

MOUNT MERCY COLLEGE
Cedar Rapids, Iowa 52402
Founded 1928

Four year liberal arts college for women, affiliated with Catholic Church, accredited
by 1 and 2. Granted 23 baccalaureate degrees in 1963. Sister Mary Innocentia,
Business Office, 1330 Elmhurst Drive, N.E.

1963-1964	1964-1965
<u>Enrollment</u>	<u>Costs</u>
Women 462	Tuition \$ 500
	Room-Bd. 750
	Fees 40
	<u>\$1290</u>

NDSL P CSS

Name of Scholarship or Name of Donor	Eligibility	Amount	Apply to
Cedar Rapids B. P. O. E.	Need	Scholarship	Scholarship Chairman Cedar Rapids Elks Club
Daughters of Isabella	Resident of Cedar Rapids area	\$400	Business Office
Honor Student	Upper ½ of high school class and CEEB scores--need not a factor.	Scholarship	College Business Office

Name of Scholarship or Name of Donor	Eligibility	Amount	Apply to
Mae E. Murphy Perpetual Scholarship	Assistance to apply on tuition. (½ to be returned when recipient becomes wage earner)	\$400	Business Office
Mother Mary Agatha Mullaney Mother Mary Gertrude McCul- lough Scholarships	Scholarship, need	Full tuition	Same as above
Mount Mercy Scholarship	American College Testing Program Test	\$400 to 5 students, renewable.	Business Office at College
Penick and Ford	Children of employees of company	\$1000	Penick and Ford
Sutherland Dows Scholarship	Scholarship, need	Full tuition	Business Office at College

#####

MOUNT SAINT CLARE COLLEGE
Clinton, Iowa 57232
Founded 1928

Two year liberal arts college for women, private corporation under Catholic Sisters of Saint Francis, accredited by 1, granted 73 Associate of Arts and 16 Associate of Applied Science degrees. Sister Mary Cecile, Dean and Registrar.

1963-1964	1964-1965
<u>Enrollment</u>	<u>Costs</u>
Women 292	Tuition \$ 400
	Room-Bd. 750
	Fees 50
	<u>\$1200</u>

NDSLIP

Name of Scholarship or Name of Donor	Eligibility	Amount	Apply to
Bowersox Scholarship	Not stated	Not stated	Dean of College
Several by local clubs and by the college		Depends on need	Same as above

MUSCATINE COMMUNITY COLLEGE
Muscatine, Iowa 52761
Founded 1929

Two year liberal arts college, under community school board. Accredited by 3.
Granted 77 Associate of Arts degrees in 1963. James F. Loper, Dean.

1963-1964		1964-1965	
<u>Enrollment</u>		<u>Costs</u>	
Men	233	Tuition	\$150
Women	128	Fees	20
	<u>361</u>		<u>\$170</u>

Name of Scholarship or Name of Donor	Eligibility	Amount	Apply to
Muscatine Business and Professional Women	Attend Muscatine Junior College--need.	2 half year tuition scholarships	Dean of the College
Muscatine Catholic Daughters of America	Graduate of Hayes High School who will attend Muscatine Junior College.	\$150--1 year tuition	Same as above
Muscatine Club	Need, ability and future plans	\$75--4 available	Dean of the College

#####

NORTHWESTERN COLLEGE
Orange City, Iowa 51041
Founded 1882

Four year liberal arts college. Affiliated with Reformed Church of America. Accredited by 1 and 2. In 1963, granted 10 Associate of Arts and 39 Bachelor of Arts degrees. Harold J. VanderLaan, Director of Admissions.

1963-1964		1963-1964	
<u>Enrollment</u>		<u>Costs</u>	
Men	215	Tuition	\$ 590
Women	195	Room-Bd.	590
	<u>410</u>	Fees	40
			<u>\$1220</u>

NDSL P

Name of Scholarship or Name of Donor	Eligibility	Amount	Apply to
Academic Scholarships	High school grades, score on ACT test	Upper $\frac{1}{2}$ of class--\$400 for 4 years, upper $\frac{1}{4}$ of class--\$800, upper $\frac{1}{10}$ of class--\$1000, upper 1% of class-- \$2000.	Scholarship Committee
Alumni Scholarships	Deserving students in 4 year teacher training.	\$150 per year	

NORTHWESTERN COLLEGE (continued)

Name of Scholarship or Name of Donor	Eligibility	Amount	Apply to
Domestic Mission Scholarship	Girl in need of assistance who plans to enter Christian service or mission.	Varies.	Scholarship Committee.
Merits Grants-in-Aid	Grades, participation in activity, ability, past success.	Varies.	Scholarship Committee and the head of the department in which applicant participates.
Mission Grants-in-Aid	Students from domestic and foreign mission fields.	Varies.	Scholarship Committee.
Union Scholarship	Worthy girl who plans fulltime Christian service.	Varies.	Same as above.
Vogel Mission Scholarship	Student planning fulltime Christian service.	Varies.	Same as above.
Young Women's Missionary	Worthy girl who plans fulltime Christian service.	Varies.	Same as above.

#####

OTTUMWA HEIGHTS COLLEGE

Ottumwa, Iowa 52501

Founded 1925

Two year college for women. Catholic. Accredited by I. Offers liberal arts and secretarial science courses. Grants Associate of Arts degree.
Sister Marie Ancille, Dean.

1963-1964
Enrollment
Women 280

1964-1965
Costs
Tuition \$ 275
Room-Bd. 745
\$1040

NDSLPL

There are several \$100 and \$200 scholarships all awarded through the office of the Dean.

PARSONS COLLEGE
Fairfield, Iowa 52556
Founded 1875

Four year liberal arts college. Affiliated with United Presbyterian Church, U.S.A. Composed of college of arts and sciences, school of business administration and the school of education. Grants baccalaureate degrees in arts, sciences and music. 365 Bachelor's degrees granted in 1963. Charles Barnett, Director of Admissions.

1963-1964.		1963-1964	
Enrollment		Costs	
Men	1959	Tuition	\$ 900
Women	608	Room-Bd.	1000
	<u>2567</u>	Fees	100
			<u>\$2000</u>

NDSL P CSS

Name of Scholarship or Name of Donor	Eligibility	Amount	Apply to
Mrs. Neil Baker Christian Service Scholarship	Protestant man or woman planning to enter Christian ministry, missionary, or educational work.	\$200 per year.	Scholarship Committee at the college.
Emma Davis Christian Service Scholarship	Men and women planning to enter fields of Christian ministry, nursing in Christian hospitals, assistants in Christian education, directors of Christian education.	\$200 per year.	Same as above
Family grants	Two or more students enrolled from same family.	Individual basis--need.	Same as above
Grants-in-Aid to Presbyterian Ministers children	Sons and daughters of Presbyterian ministers.	\$200 per year and is renewable for 4 years.	Same as above
Grants-in-Aid to sons and daughters of Ordained Ministers	Sons and daughters of Ordained Ministers of other denominations.	\$100 to \$150 per year renewable for 4 years.	Same as above
Grants-in-Aid to sons and daughters of teachers, principals, and superintendents in secondary schools.	Sons and daughters.	\$100 to \$150 per year.	Same as above
Hoerner Boxes Inc.	1 son or daughter or daughters of employees.	\$500 per year for 4 years.	Same as above
Hoerner Foundation Scholarship	Scholastic record--need.	\$200 and \$300.	Same as above
Hubert E. Howard Scholarship	Scholastic ability, leadership, Christian belief, need.	\$400 per year for 4 years.	Same as above

PARSONS COLLEGE (continued)

Name of Scholarship or Name of Donor	Eligibility	Amount	Apply to
Huston Scholarship	Students in field of science. All freshmen granted scholarships are given first year to demonstrate ability.	\$200 per year for 4 years.	Scholarship Committee
Keokuk Electro-Metals Company	2 scholarships each year to sons or daughters of company employees.	\$1500 per year for 4 years.	Scholarship Committee
Kem-Co Trust Fund Scholarship	Scholastic record--need.	\$200 and \$300.	Same as above
McCallum Scholarship	Preference for children of employees of John Morrell & Company.	4 available \$250 per year for 4 years.	Same as above
Music Grants-in-Aid	Meet college entrance requirements, compete in auditions on campus.	\$200 per year--2 available.	Same as above
Rodman Scholarship	Sons or daughters of clergymen.	\$200 per year for 4 years.	Same as above

#####

SAINT AMBROSE COLLEGE
Davenport, Iowa 52805
Founded 1882

Four year liberal arts college for men. Catholic, accredited by 1 and 2. Granted 147 Bachelor of Arts degrees in 1963. Clarence J. Kriesa, Admissions Counselor.

1963-1964
Enrollment
Men 900

1964-1965
Costs
Tuition \$ 850
Room-Bd. 890
Fees 15
\$1755

NDSL P CSS

Name of Scholarship or Name of Donor	Eligibility	Amount	Apply to
Athletic Scholarship and Music Scholarship	Outstanding ability in basketball, track, tennis and golf, music.	Up to full tuition, 36 athletic, 10 music available.	Dean of the College

SAINT AMBROSE COLLEGE (continued)

Name of Scholarship or Name of Donor	Eligibility	Amount	Apply to
Deanery Scholarship	Graduate of high school in quad-city area, competitive examination.	$\frac{1}{2}$ scholarship per year for 4 years. 5 are available.	Dean of the College
Ecclesiastical Scholarship	Academic ability, leadership, need, ecclesiastical students for the Diocese of Davenport.	31 Ecclesiastic scholarships for students studying for the priesthood.	Bishop at the Chancery Office
Father Flannigan	Member of Sacred Heart Parish, Davenport.	Varies.	Dean of the College
Father James Dunnion	Student at Saint Vincent's Home, Davenport.	Varies.	Dean of the College
General Scholarships	Scholastic ability, leadership, financial need.	18 general scholarships.	Same as above
Monsignor Shannahan Scholarship	Member of Shannahan family or members of Sacred Heart, Davenport, or Saint Patrick, Iowa City parish.	Varies.	Same as above
Rt. Reverend C. J. Donahue	Worthy boys from Saint Paul's, Davenport.	Varies.	Same as above
Rt. Reverend E. J. McLaughlin	Graduate of Saint Mary's of Clinton.	Varies.	Same as above
Special scholarships	Graduate of Bettendorf, Davenport, Eldridge High Schools plus 3 Illinois schools. Students from each Deanery of Davenport. Student from Assumption High School.	3 available--tuition. Tuition--1 available. Tuition--1 available.	Same as above
Wilbur J. Barloon	Pre-medical or science students.	Varies.	Dean of the College

SIMPSON COLLEGE
Indianola, Iowa 50125
Founded 1860

Four year liberal arts college, under Methodist Church, accredited by 1 and 2.
Grants baccalaureate degrees in arts, science, music, and music education. In
1963, 114 Bachelor's degrees were granted. Daniel Seaton, Director of Admissions.

1963-1964	1964-1965
Enrollment	Costs
Men 458	Tuition \$ 970
Women 292	Room-Bd. 720
<u>750</u>	<u>\$1690</u>

NDSL P CSS

Name of Scholarship or Name of Donor	Eligibility	Amount	Apply to
Barrows Music Scholarship	Awarded to freshmen on basis of an audition, keyboard, instrumental, or vocal music.	½ tuition--6 available, renewable.	Director of Admissions
District Methodist Scholarship	Nomination by local minister and district superintendent or area director of youth work--best church record and scholastic record.	\$200 to 1 student in each of the 14 districts of the Methodist Church, renewable.	Same as above
Ecclesiastical Heritage Grants	Son or daughter of clergy of Evangelical Churches, scholastic ability and performance.	\$300 per year.	Same as above
Grants-in-Aid Endowed Scholarship	Need, ability to do college work.	Up to \$350 per year.	Same as above
Hamilton Memorial Fund	Deserving persons active in athletics.	Varies according to individual needs.	Director of Admissions
Mathew Simpson Ministerial Grant	Promising students preparing to enter ministry.	\$300 per year.	Same as above
National Methodist Scholarship	Scholastic ability, high school record, leadership, Christian activities, service, need, must be a member of the Methodist Church.	Up to \$500 per year and can be held for 2 years.	Same as above
Presidents Freshmen Scholarship	Scholastic ability, high school record, leadership, recommendation of principal.	\$100 to full tuition 1 year.	Same as above
Preston Educational Trust	Worthy, industrious, needy, male resident of Iowa, Protestant, must intend to prepare for full Christian service.	\$600, \$400 of which is grant--\$200 is loan.	Same as above

SIMPSON COLLEGE (continued)

Name of Scholarship or Name of Donor	Eligibility	Amount	Apply to
Trustees Competitive Scholarship	Competitive written examination on Simpson campus.	\$350 to \$600 and is renewable.	Director of Admissions

#####

STATE COLLEGE OF IOWA
Cedar Falls, Iowa 50613
Founded 1876

State college under State Board of Regents. Offers liberal arts with emphasis on teacher education through Master's degree. Accredited by 1, 2 and 4. Granted 742 Bachelor's degrees, and 124 Master's degrees in 1963. Marshall R. Beard, Registrar.	1963-1964	1964-1965
	<u>Enrollment</u>	<u>Costs</u>
	Men 2132	Tuition \$252
	Women 3542	Room-Bd. 680
	Graduate Men 299	\$932
Graduate Women 174		
	<u>5147</u>	

NDSLPL

Name of Scholarship or Name of Donor	Eligibility	Amount	Apply to
Alumni Scholarship	Entering freshmen.	\$252 and may be renewed.	M. R. Beard, Registrar
Art Fair Scholarships	Four high school seniors interested in becoming art teachers. Awards made primarily on basis of work submitted during art fair held each spring on the campus.	Same as student aid scholarships.	Same as above
Cedar Falls PTA Scholarship	Cedar Falls student in upper $\frac{1}{2}$ of class with serious interest in teaching, personality, character, leadership, citizenship, need.	\$127 (1 semester tuition for Iowa State College).	High school Principal
Dickey Memorial Scholarship	Promising freshman in field of music or home economics.	\$200.	Registrar
General Alumni Scholarships for Athletes	Academic promise, financial need, outstanding athletic ability.	\$200-\$600 per year renewable if a "C" average is maintained.	College Committee and Athletic Director

STATE COLLEGE OF IOWA (continued)

Name of Scholarship or Name of Donor	Eligibility	Amount	Apply to
General Award	Need, probable success, participation in extra-curricular activities, character and personality, interest in teaching.	\$100 a semester for 2 semesters.	Registrar
Latta Scholarship	Academic excellence, leadership and intend to teach.	\$300 per year for 2 years.	Same as above
Leslie Reed	Senior of outstanding ability who plans to teach.	\$300 a year for 2 years.	Same as above
McDonald Scholarship and Loan	Promising student in education or business departments.	\$1000 scholarship \$1400 loan, 2 available each year.	Same as above
Merit Award	Scholarship as evidenced by high school grades and scholastic tests, need not a factor.	\$100.	Same as above
Other Scholarships	A good many scholarship and loan funds are available for distribution by the college authorities.	Varies.	Same as above
Science Fair Scholarships	Four high school seniors exhibiting best science projects at science fair held each spring on campus, interested in teaching.	4 year--same as student aid scholarships.	School Superintendent or Principal has material and application forms.
Student Aid Scholarship	Desire to teach in public schools of Iowa, legal residents of Iowa, character, personality, academic ability, need, high school seniors and junior college sophomores, college entrance test. ACT tests.	Varies with need, approximately 400 awarded, may be up to \$200 a year.	Iowa school Superintendents or Principals have material and application forms.
Viking Scholarship	Need, academic promise.	\$200 per year, 2 available, renewable for 4 year course.	Registrar

STATE COLLEGE OF IOWA (continued)

Name of Scholarship or Name of Donor	Eligibility	Amount	Apply to
Waterloo-Cedar Falls Chamber of Commerce	Graduate of high school in Cedar Falls- Waterloo area.	\$200 per year, funds contributed by firms, organizations, some are renewable.	Registrar
Waterloo Elklette	Student from Waterloo-Cedar Falls area.	\$250 for 1 year.	Dr. Daryl Pendergraft Assistant to the President, State Col- lege of Iowa

#####

STATE UNIVERSITY OF IOWA
Iowa City, Iowa 52240
Founded 1847

State University under the State Board of Regents, accredited by 1 and 2. Each college or school accredited by associations in their respective fields. Contains colleges of liberal arts (including schools of fine arts, journalism, religion and social work), law, medicine, dentistry, pharmacy, engineering, education, business administration, nursing and the graduate college. Grants degrees Bachelor through Doctors. In 1963 granted 1508 Bachelors, 683 Masters, 205 Doctors, 117 M.D., 53 D.D.S., 94 J.D. and L.L.B. Director of Admissions and Registrar, Charles M. Mason, Director of Student Financial Aid. Room 1, University Hall.

1963-1964	
Enrollment	
Men	6204
Women	3939
Grad. M.	2085
Grad. W.	695
	<u>12,923</u>

1963-1964	
Costs	
Tuition-Room-Board	
Resident	\$1170
Non-res.	\$1500

NDSLP

Name of Scholarship or Name of Donor	Eligibility	Amount	Apply to
Activity Scholarships	Above average scholarship, participation, extra-curricular activities, needy, worthy.	Varies to need.	Nomination by the sponsoring department
Bender Scholarship	Needy, academic ability.	\$290 per year.	Director of Student Aid
Bennett Scholarships	Protestant preferably from Bennett, Iowa, with need.		Director of Student Aid

Name of Scholarship or Name of Donor	Eligibility.	Amount	Apply to
Carroll County S.U.I. Alumni Association	Outstanding student who needs assistance to attend S.U.I. as a freshmen.	\$204 per year.	S.U.I. Alumni Association, Carroll
Drake Scholarships	Men residents from West Liberty, Iowa and vicinity.	\$50	Director of Student Aid
Drew Memorial Scholarship	Undergraduate demonstrating academic pro- mise.	Tuition.	Same as above
Scott German Scholarship Fund	Deserving boys and girls of Maquoketa, Iowa.	Tuition.	Same as above
Granger Scholarships	Graduate of Webster County High Schools. Qualified for admission to S.U.I.	1 year tuition.	Board of Education Fort Dodge School District
Robert Hunter Scholarship	To midwestern boys, preferably from Iowa interested in studying actuarial science.	\$500 per year.	Director of Student Aid
"I" Club	Upper ½ of graduating class, recommenda- tion by Superintendent or Principal, by a business or professional man in home community, outstanding ambition, activity debate, music, art, sports, etc.	Tuition and fees.	
Nile Kinnick Memorial Scholarship	Emulate the ideals and achievements of the late Nile C. Kennick.		S.U.I. Athletic Department and Office of Student Aid
Lloyd A. Knowler (esta- blished by American Society for Quality Control)	Student in science, engineering and ad- ministration.	Tuition.	Director of Student Aid
Music Scholarships		Limited number of music scholarships for amount of music fee.	Department of Music

STATE UNIVERSITY OF IOWA (continued)

Name of Scholarship or Name of Donor	Eligibility	Amount	Apply to
George Perkins Scholarship	Senior planning to major in journalism who is resident of U.S., in top 1/3 of class, demonstrated ability in journalism, academic record and promise of success in journalism.		Director of Student Aid
Proudfoot Scholarship	Needy and worthy student in Art Department, preference to resident of Warren County.		Director of School of Fine Arts
Public Speaking	Finalist--six debaters, and 2 speakers in high school Forensic League Contest.		Director of Student Aid
Quill and Scroll	Iowa high school senior planning to major in journalism at S.U.I. In top 1/3 of class and to have taken part in journalism work.	\$500 in equal installments freshmen and sophomore year.	Same as above
Student Aid Scholarships	Iowa resident, need, must have 2.5 or better high school average and be in upper 1/4 of class. ACT tests taken in November.	\$1290 to freshmen 60 available.	Same as above
University Merit Scholarship for Freshmen	High school seniors in top 10% of class, need, test scores and school record.	\$100 maximum--150 available each year.	Application blanks available in all high schools.
Helen Watzek Memorial	Women high school seniors, general scholarship record, need, recommendation of District Chairman of Iowa Federation of Women's Clubs.	\$250 per year.	Mrs. Martin Van Oosterhout, Chairman of Scholarship and Loan Fund Committee, Iowa Federation of Women's Clubs
Wyland Scholarship	Deserving student in liberal arts.		Director of Student Aid

UNIVERSITY OF DUBUQUE
Dubuque, Iowa 52001
Founded 1852

Four year liberal arts college under United Presbyterian Church U.S.A. Accredited by 1 and 2. Baccalaureate degrees granted in arts, science, business administration, and music. (See also Dubuque Theological Seminary page 16)
Charles Cadigan, Director of Admissions.

1963-1964		1964-1965	
Enrollment		Costs	
Men	375	Tuition	\$ 880
Women	271	Room-Bd.	
		Men	700
		Women	750
		Total--Men	\$1650
		Total--Women	\$1700

NDSL P CSS

Name of Scholarship or Name of Donor	Eligibility	Amount	Apply to
Band and Orchestra Awards	Music ability of value to the orchestra or band	\$75	Music Department
Church vocation competing award	Plan to enter fulltime Christian service, recommendation of local church and minister and evidence of being under care of Presbyterian or other denominations.	\$50	Scholarship and Student Aid Committee
Dubuque Bank and Trust Company	1 to a senior at Dubuque High School 1 to a senior at Wahlert High School	\$100 for 1 year and is renewable by the college.	Determined by school
Endowed Scholarship Funds	Most of these are to assist students preparing for fulltime Christian service.		Director of Admissions
Grants-in-Aid	Need, and must maintain at least "C" grade	Varies	Director of Admissions
Hager Scholarship	Students preparing for ministry or a church vocation in college of liberal arts. Residents of Waukon area given preference.	\$330 per year (may be divided between 2 students)	Same as above
Honor Scholarships	Upper 10% of class--must show promise of success in college. 90% or better on CEEB	Up to \$700 per year and is renewable.	Same as above
MacAskill Scholarship	Upper 1/3 of high school class excellent in athletics.	\$150 freshmen year only.	Same as above
Music Scholarship	Upper 1/3 of class show music ability in audition, tests and conferences.	\$200-\$700 per year renewable.	Music Department

UNIVERSITY OF DUBUQUE (continued)

Name of Scholarship or Name of Donor	Eligibility	Amount	Apply to
Robert Brooks	Outstanding freshmen.	\$25 per year for 4 years.	Director of Admissions
Special Discounts	Two or more students from one family en- rolled at same time.	10% of tuition.	Same as above
Tuition Reduction for chil- dren of ministers and miss- ionaries	Children of ministers and missionaries who present proof of need.	\$60 per year.	Dean of Students
Wubben Memorial Scholarship	Male student who shows evidence of good scholarship and athletic ability.	\$300 as scholarship and \$300 as loan.	Same as above

#####

UPPER IOWA UNIVERSITY
Fayette, Iowa 52142
Founded 1854

Four year liberal arts college under private corporation, accredited by 1 and 2.
Grants baccalaureate degrees in arts and in science. 187 degrees granted in
1963. Braulic Caballero, Director of Admissions

1963-1964		1964-1965	
Enrollment		Costs	
Men	489	Tuition	\$ 700
Women	222	Room-Bd.	670
	711	Fees	200
			<u>\$1570</u>

NDSL P

Name of Scholarship or Name of Donor	Eligibility	Amount	Apply to
Honor Scholarships	Awarded to one member in each school grad- uating class. Scholarship, leadership, character, reliability, honesty, loyalty, extra-curricular activities.	Partial tuition for 4 years.	Selected by school Superintendent
Ministerial and Missionary Scholarship	Each student preparing for ministry or missionary work in any denomination.	\$50 per year toward tuition.	Academic Dean of the College

UPPER IOWA UNIVERSITY (continued)

Name of Scholarship or Name of Donor	Eligibility	Amount	Apply to
Scholarships and Grants-in-Aid	Minimum of "C" average.	Amount awarded is determined by individual evaluation--175 available.	Director of Admissions
Several Loan Funds		Up to \$1000 per student.	Business Office
Len Simek Memorial Scholarship	Outstanding athlete.	Full tuition.	Dean of the College

#####

VENNARD COLLEGE
University Park, Iowa 52595
Founded 1910

Four year college emphasizing training for religious careers. Granted 19 Bachelor of Arts degrees in 1963. Accredited by Association of Bible Colleges. Merne A. Harris, Vice President

1963-1964		1963-1964	
Enrollment		Costs	
Men	50	Tuition	\$315
Women	55	Room-Bd.	495
	<u>105</u>	Fees	28
			<u>\$838</u>

NDSLPL

Name of Scholarship or Name of Donor	Eligibility	Amount	Apply to
Freshmen Scholarship	Not stated.	Not stated.	Vice President

#####

WALDORF COLLEGE
Forest City, Iowa 50436
Founded 1903

Two year college under American Lutheran Church, accredited by I. Offers courses in liberal arts, commerce and industrial arts. In 1963, granted 100 Associate of Arts and 23 Associate of Commerce degrees. Robert Everson, Director of Admissions

1963-1964		1964-1965	
Enrollment		Costs	
Men	231	Tuition	\$ 600
Women	179	Room-Bd.	600
	<u>410</u>	Fees	75
			<u>\$1275</u>

WALDORF COLLEGE (continued)

NDSLP CSS

Name of Scholarship or Name of Donor	Eligibility	Amount	Apply to
Waldorf Scholarship	Seniors high in scholarship, upper 10% of graduating class or upper 10% on ACT test, or upper ¼ of graduating and upper ¼ on ACT test.	Total of \$250 applied toward tuition equally during four semesters.	Admissions Office
Dora Jerdee Scholarship	Freshmen who will return to Waldorf for the second year, and who plan to go into teaching or parish work.	\$100 per year.	Same as above
Grants-in-Aid	Character, need, scholarship and academic promise.	Varies.	Same as above

Several loan funds are administered by the college office.

#####

WARTBURG COLLEGE
Waverly, Iowa 50677
Founded 1852

Four year liberal arts college under American Lutheran Church, accredited by 1, 2 and 4. Grants baccalaureate degrees in arts, science, education, music, and music education. 167 Bachelor's degrees granted in 1963. Fred Thompson, Director of Admission.

1963-1964		1964-1965	
Enrollment		Costs	
Men	637	Tuition	\$ 725
Women	545	Room-Bd.	550
	1182	Fees	78
			<u>\$1353</u>

NDSLP CSS

Name of Scholarship or Name of Donor	Eligibility	Amount	Apply to
High School Honor Scholarships	Outstanding high school graduates in top 10% of class.	\$200	Wartburg Admissions Office
Lutheran Youth Leadership Award	High school seniors outstanding, scholastic achievement, leadership in scouting, Luther League, or 4-H work.	\$200	Same as above

WARTBURG COLLEGE (continued)

Name of Scholarship or Name of Donor	Eligibility	Amount	Apply to
Proficiency Award	Excellence in leadership and extra-curricular activities, upper 25% of class.	\$175	Wartburg Admissions Office
Regents Program	Same as above.		
I. Regents Scholarship	Same as above,	\$400 per year for 4 years(1 available)	
II. Regents Merit Scholarship	Same as above,	\$200 per year (several available)	
III. Regents Honor Scholarship	Same as above.	\$200 first year \$150--3 following years.	
Scholarships, Grants-in-Aid, part-time work, loans.	Need, scholastic excellence (must be in upper 1/2 of class for consideration), with good character.	Tuition credit, amount determined by need.	Same as above
Roger Tillapaugh	Freshmen music student of outstanding talent, and promise of achievement, audition.		Same as above
Tonn-Yeager Memorial Brotherhood of the American Lutheran Church of Jesup	Resident of N.E. Iowa, preferably Jesup area, planning to enter fulltime church service.	\$150	Same as above

#####

WARTBURG THEOLOGICAL SEMINARY
 Dubuque, Iowa 52001
 Founded 1854

Theological Seminary offering work beyond the baccalaureate degree. Accredited by American Association of Theological Schools, grants Bachelors of Divinity and Master of Sacred Theology degrees. Granted 48 Bachelor of Divinity Degrees in 1963. Alfred H. Ewald, President - 333 Wartburg Place.

	1963-1964	1964-1965
<u>Enrollment</u>		<u>Costs</u>
Men 191		\$759

NO SCHOLARSHIPS AVAILABLE FOR UNDERGRADUATES

WEBSTER CITY JUNIOR COLLEGE
Webster City, Iowa 50595
Founded 1926

Two year college under community school board, accredited by 3, courses offered in liberal arts, business, and adult education. Granted 37 Associate of Arts degrees in 1963. A. W. Langerak, Dean.

1963-1964		1964-1965	
Enrollment		Costs	
Men	89	Tuition	\$180
Women	49	Fees	32
	138		\$212

NDSLIP

Name of Scholarship or Name of Donor	Eligibility	Amount	Apply to
American Legion Auxiliary		\$150 per year.	Dean of the College
Federated Women's Club		\$80 per semester.	Same as above
Webster City American Legion		\$100 per semester.	Same as above
Webster City Business and Professional Women's Club, Hamilton County Bar Association, Indian Club, Lions Club and Lionel.	Graduate of Hamilton County High School and must use the scholarship at Webster City Junior College.	\$100 per semester.	Same as above
Webster City Education Association		\$80 plus fees each semester.	Same as above
Webster City P.T.A.		\$80 per semester.	Same as above
Webster City Junior College Fund	Student must maintain 2.5 grade average.	\$50 each semester.	Same as above
Webster City Board of Education	Valedictorian or salutatorian of Webster City and nearby high schools, and several others to worthy graduates.	Tuition.	Same as above
Rotary Club		\$50 semester.	Same as above
Farmers National Bank		Same as above.	Same as above
First State Bank		Same as above.	Same as above
Hamilton County Medical Association		Same as above.	Same as above

WESTMAR COLLEGE
LeMars, Iowa 51031
Founded 1890

Four year liberal arts college, under Evangelical United Brethren Church, accredited by 1, 2 and 4. Grants baccalaureate degrees in arts, science, music and music education. 160 Bachelor's degrees granted in 1963.
Thomas Stone, Registrar and Director of Admissions.

1963-1964		1964-1965	
Enrollment		Costs	
Men	386	Tuition	\$ 700
Women	377	Room-Bd.	660
	<u>763</u>	Fees	60
			<u>\$1460</u>

NDSL P CSS

Name of Scholarship or Name of Donor	Eligibility	Amount	Apply to
Clark Bolser Memorial Grant	Need, character, promise of success in college.	Varies,	Scholarships and Grants Committee with final selection made by First E.U.B. Church of Cedar Falls.
Gardner Cowles Foundation	Worthy students.	Not stated,	Director of Admissions
Candidates for Ministry	Certification by ecclesiastic authorities. Must sign notes for the amount of grant which will be cancelled, \$100 for each year of fulltime ministerial service.	1/5 of tuition.	Scholarships and Grants Committee
Amanda Dubs	Same as candidate for minister.	1/5 of tuition.	Director of Admissions
Defiance Evangelical United Brethren Church	For candidates for ministry or other fulltime Christian workers, member of Defiance church given preference.		Same as above
Farmers Insurance Group	Biographical sketch each semester.	\$250	Same as above
Family Grant	Two or more unmarried members of same family enrolled.	\$25 per semester.	Same as above
Honor Scholarship	High school seniors members of National Honor Society or are in upper 10% of high school class.	\$50 renewable if standing is in top 1/4 of class.	Same as above
Iowa Chapter of Evangelical United Brethren Men	Upper 50% of high school class.	Up to \$200 per year.	Scholarship Committee 901-3rd Avenue, S.E. LeMars

WESTMAR COLLEGE (continued)

Name of Scholarship or Name of Donor	Eligibility	Amount	Apply to
Orman Jeffrey Foundation	General scholarship qualifications.	Varies.	Scholarship Committee 901-3rd Ave. SE. LeMars
Harvey Kluckhohn by LeMars Rotary Club	LeMars high graduate.	\$200	Same as above
Lakeside Scholarship	Music students, need, character, scholar- ship.	\$200	Same as above--with joint action by donors
Larsen Teacher Education Grant	Must be preparing for teaching.		Director of Admissions
LeMars Lions Club Scholar- ship	Graduate of LeMars and Gehlen High Schools.	\$50 each.	Lions Club
Rosa Lepley	Must be preparing for ministry or other Christian Service. See conditions for ministry above.	Depends on income from endowment.	Director of Admissions
McBride Scholarship	Candidate for mission or other fulltime church work.	\$125	Scholarship Committee
William Noll Science Scholar- ship	Outstanding science student.	$\frac{1}{2}$ tuition for 1 year.	Same as above
Mable Thorp Jones	For art students.	Varies.	Same as above
Plymouth Electric Coopera- tive Association Scholarship	Resident of Plymouth County, need, character, scholarship.	\$100	Board of Directors of the Association
Prophet Company	Need and character.	2 scholarships in amount of full board for year.	The Prophet Company
Sohl Science Scholarship	Major in science, math, good scholarship.	\$150	
Stauffacher Memorial Scholar- ship	Need, scholastic ability.	\$250 per year--2 available.	Scholarship Committee

Name of Scholarship or Name of Donor	Eligibility	Amount	Apply to
Sons and Daughters of Ministers	Sons or daughters of ministers all denominations.	1/5 of tuition.	Director of Admissions
Student Ministerial Grant Fund	Ministerial students of the E.U.B. Church same term as listed above.	1/5 tuition.	Same as above

#####

WILLIAM PENN COLLEGE
Oskaloosa, Iowa 52577
Founded 1873

Four year college of liberal arts. Under Iowa Yearly Meeting of Friends. Accredited by 1 and 2. Granted 93 Bachelor of Arts degrees in 1963. Dr. Duane Moon, Director of Public Relations.

	1963-1964	1964-1965
<u>Enrollment</u>		<u>Costs</u>
Men	443	Tuition \$ 700
Women	239	Room-Bd. 634
	<u>682</u>	Fees 74
		<u>\$1408</u>

NDSL

Name of Scholarship or Name of Donor	Eligibility	Amount	Apply to
Activity Achievement Award	Athletics, fine arts, and music, English, and forensics, departmental.	36 full tuition and 18 half tuition.	Approved by heads of departments.
Friends Monthly Meeting	Friends congregation may recommend a high school graduate belonging to the congregation. Same qualifications as Merit Scholarships.	See Merit Scholarship.	Director of Admissions
Merit Scholarships	Scholastic record, high school graduate of Oskaloosa, 15 available in Mahaska County. If class is 35 or less, 1 scholarship; if over 35 in class, 2 or more scholarships; for graduates of Ottumwa High School, 12 available; in other schools up to 50 seniors in class, 1 scholarship and 1 additional for each additional 100 seniors. Goes to qualified member of graduating class of a Friends High School.	\$1600--upper 5% \$1200--upper 10% \$ 900--upper 20% \$ 600--upper 30%	Same as above

WILLIAM PENN COLLEGE (continued)

Name of Scholarship or Name of Donor	Eligibility	Amount	Apply to
Ministerial Scholarship	Preparing for ministry or other fulltime Christian work, need, applicant signs note which will be cancelled upon completion of one year of fulltime Christian service.	½ tuition.	Director of Admissions
Music Scholarships	Available to freshmen after one semester.	½ music tuition.	See Music Department
Ministers and their families	Minister or member of immediate family of Iowa Yearly Meeting of Friends Ministers.	½ tuition--renewable if grade average is 2.0	Scholarship Committee
Charles Needham Scholarship Fund	Worthy and needy students.	Varies.	Same as above
Minnie Trueblood Scholarship	Needy heirs of Minnie Trueblood, members of Cedar Creek, Salem Quarterly for Iowa Yearly Meeting of Friends, in that order.	Varies.	Same as above

#####

SECTION II
GENERAL SCHOLARSHIPS

Alphabetically by Name of Scholarship or Donor

Name of Scholarship or Name of Donor	Eligibility	Value	Colleges	Apply to
AFL-CIO	Six merit scholarships in different sections of the United States, $\frac{1}{2}$ awards to children of current members of affiliated union, other $\frac{1}{2}$ does not require parent to be member, exceptional ability, National Merit Scholarship Test.	\$1500 per year for 4 years.	Any.	Education Director of the AFL-CIO Department of Education, 815-16th Street, Washington, D.C., N.W.
AFL-CIO	Fort Madison Service-Test administered by high school in April.	\$50-\$25-\$15 local award and \$500-state.	Any.	High school counselor
Air Force Aid Society	Unmarried dependent son or daughter of deceased Air Force or Army-Air Force personnel, retired Air Force personnel, active Air Force personnel, need and first priority to orphans, veterans not eligible(CEEB test).	Part of first year college expense.	Not stated.	Director of Air Force Society, Washington, D.C.
Allis Chalmers Manufacturing Company	Employees children.	\$600 per year, renewable, 15 available.	College of Choice.	Allis Chalmers Manufacturing Company
Aluminum Company of America	Sons and daughters of Alcoa employees at Davenport works.	3--\$2500	Any accredited college or university, see SUI or ISU in Section I.	Ralph Beachler, Training Director, Davenport

Name of Scholarship or Name of Donor	Eligibility	Value	Colleges	Apply to
American Legion Auxiliary "National Presidents Scholarships" Many local Legion Posts and auxiliaries have own local funds.	Two girls in each of 5 divisions who are children of deceased veterans of World Wars I and II or Korea. High school seniors or graduates who have not attended college and need help to continue education.	\$1000 each.	Any.	Education and Scholarship Chairman of local auxiliary unit
American Legion "National High School Oratorical Contest"	Four finalists in National High School Oratorical Contest.	\$4,000 to winner \$2,500 to runnerup \$1,000 third place \$500 fourth place.	Any accredited college or university in the United States.	Apply to Principal of high school which participates in the contest or local Legion Post.
American Veterans Memorial Scholarships	Deceased or totally disabled parent who is veteran of World War II or Korea, need, competitive test by National Association of Secondary School Principals.	\$125-\$500 per year for 4 years.	Any.	American Veterans National Headquarters Box 6038, Mid-City Station, Washington, D.C.
Bernstein Scholarship	Resident of Lyon County, ACT test.	\$250 for 1 year.		
Dr. Bartach-Dunne Scholarship	Graduate of Burlington High School.	Not stated.	Burlington Junior College and 3 state schools.	Chosen College
Bausch and Lomb Optical Company	High standing in science with CEEB aptitude test.	\$100-\$1500 per year, maximum \$6000	University of Rochester, N.Y.	University of Rochester Rochester, New York
Cliff Boylin	Girl graduate of Charles City Community High School, must enroll in physical education.	\$100-1 available.	College offering 4 year physical education degree for women.	High school Principal
Dr. Boyne Scholarship	Graduate of Abraham Lincoln or Thomas Jefferson, Council Bluffs high schools.	1 available every 4 years, amount not stated.		Committee composed of Principals of the 2 high schools, a school board member and 1 person from administration.

Name of Scholarship or Name of Donor	Eligibility	Value	Colleges	Apply to
Bloomfield Rotary Club	Graduate of Davis County High School.	\$100		Bloomfield Rotary Club
Cedar Rapids College Club	Good student and responsible girl.	Loan to girls who qualify for college.		Cedar Rapids College Club President
Cedar Rapids American Legion Auxiliary	Veteran's child.	12 scholarships in Iowa.		Mrs. John Stodola 1951 Mt. Vernon Road Auxiliary Committee
Colfax American Legion	Graduate of Colfax High School.	\$50 per year.		Women's Club Committee
Colfax Women's Club	Graduate of Colfax High School.	\$50 per year.		
Conoco Scholarship	Child of employee with 5 years of service.	\$500--maximum \$2,000.	Any college.	Continental Oil Company, Drawer 1267 Ponca City, Oklahoma
Gardner Cowles Foundation	Deserving students preference to small town and rural residents.	Varies.	Private Iowa.	College of Choice
Czech Women's Education Society	Czech descent, senior in good-standing.	\$150		Bohemian Savings and Loan Company
Davis County P.T.A.	Davis County high school graduate.	\$100	Any.	Bloomfield P.T.A.
Des Moines Women's Club	Graduate of Polk County High School to study art-literature.	\$200	Any.	Mrs. L. A. Jennings Chairman, Scholarship Committee, Hoyt-Sherman Place, Des Moines, Iowa
Elks National Foundation	Essay contest, scholarship, citizenship, need, worthiness.	National champion \$1,500 down to \$100.		High school English teacher or local Elks Club.

Name of Scholarship or Name of Donor	Eligibility	Value	Colleges	Apply to
Fraternal Order of Eagles Memorial Founda- tion	Minor child of an Eagle member killed in service in World War II or Korean War. Student must be unmarried under 20 and not self-supporting.	High percentage of the cost at a state college or university the state in which the student resides or at a vocational school.		Memorial Foundation 321 North Michigan Street, South Bend, Indiana
Fort Madison Junior Achievement Awards	Fort Madison High School seniors, stress on Junior Achievement and school performance, need not considered.	2 for \$2,000 and 1 for \$1,000		Fort Madison Junior Achievement
Firestone Tire and Rubber Company	Son or daughter of an employee who has completed 5 years of continuous service with company by January 1 of the year in which award is made, and does not receive base pay in excess of \$850 per month, student must be in top 1/3 of class for 3½ years, and make good record in school and college ability test prior to February 1.	Up to \$1,500 per year, record re- viewed at end of each year and re- newed to give four years of scholar- ship.	Any accredited college or uni- versity in the United States	Firestone Scholarship Committee, obtain an application form from personnel or indus- trial relations de- partment at all Fire- stone factories or offices.
Fort Madison Business and Professional Women	A senior girl need letter of application.	\$200		BPW Offices
Fort Madison Junior Chamber of Commerce	Senior boy or girl need promi- nent factor.	Boy \$750, girl \$200		Fort Madison Junior Chamber of Commerce
Fort Madison Elks Club	Fort Madison High School senior boy or girl	\$50-\$25 local, \$500 state award		To Fort Madison Elks Club
Florists Telegraph and Delivery Association	Students in colleges taking course in floristry and flori- culture.	Not stated	College offering course in flori- stry and flori- culture.	Florists Telegraph Delivery Association 900 Lafayette Blvd. Detroit, Michigan
Ford Foundation	CEEB test, academic record, and personal qualifications.	Tuition plus up to \$1,000		Participating Col- lege

Name of Scholarship or Name of Donor	Eligibility	Value	Colleges	Apply to
Ford Motor Company Fund	Child of Ford employee whose salary is less than \$1,000 per month, top 1/3 of class, college board examination, graduation from high school between 9/1/63 and 8/31/64, must enter college not later than fall, 1964.	\$300-\$750 per year renewable, cooperative work plan, must continue without interruption except usual vacations.	Any, but must intend to earn a Bachelor's degree in liberal arts or science or equivalent credit toward one of the professions.	Ford Motor Company Fund, Central Office Room 430, American Road, Dearborn, Michigan, 48121, not later than December 1.
General Motors	CEEB examination, United States citizen, leadership potential and need.	\$200-\$2,000 and renewable.	Any	General Motors National Scholarship Program, Box 461 Princeton, New Jersey.
General Electric Foundation	Son or daughters or employee, must choose college course leading to degree.	\$700 per year, renewable for 4 years, \$500 granted to the college.	Any college or Junior College whose credits are transferrable to degree granting school.	Scholarship Award Program
Alice L. Graham Scholarship	Protestant resident of Pottawattamie County or Cass County. Take tests in county superintendent's office. High scholarship in high school.	\$500 per year for 4 years, 2 in each county.	Four year Iowa college	County superintendent at Atlantic, and county superintendent at Council Bluffs.
Hampton State Bank	High academic potential, need	\$200	Any accredited Junior College or four year college.	Hampton High School
Hampton Rotary Club	Senior girl or senior boy in 80% in ITED and ACT tests, and "C+" average for 7 semesters in high school.	\$100	Same as above	Same as above
Hampton Teacher's Association	High school graduate and member of Future Teachers of America	\$100		Faculty Scholarship Committee

Name of Scholarship or Name of Donor	Eligibility	Value	Colleges	Apply to
Hulsinger Company	Two scholarships each year to some son or daughter of employee	\$850 per year for four years.	Any accredited 4-year college	
Iowa-Illinois Gas and Electric Company	Must reside in area served by company and be in upper 25% of class	4 year scholarship	Any accredited college	Counselor's Office
Indianola Student Council	Indianola High School senior	\$100	Not stated	Indianola High School
Indianola National Honor Society	Indianola High School senior	\$100	Not stated	Same as above
Indianola Future Teachers	Indianola High School senior studying to become a teacher.	\$100		Same as above
Indianola PEO	Indianola High School senior	\$50		Indianola PEO Chapter J.V.
Iowa Bonus Board Aid to War Orphans	Iowa student, either of whose parent's death resulted from military service between April 16, 1917 and June 2, 1921; or between September 16, 1940 and September 2, 1945; or between June 27, 1950 and July 27, 1953.	Maximum of \$300	Any Iowa school	Iowa Bonus Board, State Capitol, Des Moines
Iowa State Vocational Board Scholarship	Physically handicapped residents of Iowa.	Fees	Any Iowa school	State House, Des Moines
Iowa High School Athletic Association	Young man graduating from high school, enroll in course leading to preparation for Physical Education teaching.	Varies	Iowa colleges	Iowa High School Athletic Association Boone, Iowa
Knights of Columbus	Sons and daughters of Knights killed or disabled as result of military service during World War II and Korean conflict.	4 years tuition, board, room, books, lab fees and incidentals.	Any Catholic College or University	Local or state councils, or F. Lamb, Supreme Secretary of Knights of Columbus Drawer 1670, New Haven, Connecticut.

Name of Scholarship or Name of Donor	Eligibility	Value	Colleges	Apply to
Rachel Kyl	Graduate of Davis County High School	\$100	Not stated	Donald Milligan County Superintendent Bloomfield, Iowa
Lockheed Leadership Fund	United States citizen under 25, senior in public, private or parochial secondary school.	Full tuition and fees, plus \$500. 10 scholarships in engineering, 5 in other fields.	Write for list of schools (none in Iowa)	Lockheed Leadership Fund, Box 551 Burbank, California
Lulac	High school senior of Mexican descent.	\$200 to \$500	Not stated	Superintendent of Lee County Schools, Fort Madison, Iowa
Lutheran Brotherhood Life Insurance Company		\$200	Any Lutheran college	Lutheran Brotherhood Life Insurance Company, 2nd Avenue S. Minneapolis, Minn.
Maquoketa American Legion Auxiliary	Daughter of Maquoketa Veteran and graduate of Maquoketa Community High School	\$100	Any	Maquoketa American Legion Auxiliary
Maquoketa Gamble's Store	Maquoketa Community School graduate	Approximately \$350 depending on store volume and thus might not be given every year.	Any	Maquoketa Gamble's Store
Maytag College Scholarship	Graduates of Newton High School and other schools if parent is employed by Maytag.	Tuition plus up to \$100 per semester.	School of choice	Maytag Foundation Newton, Iowa
Christian Marshall Scholarship	Senior boy in Hampton High School, scholarship, need, may take pharmacy, or teach in the field of science or mathematics.	\$200	Any accredited junior or 4 year college	Hampton High School
McClain Scholarship	Outstanding boy	Varies according to need.	School of choice	F. Campbell, Trustee Maytag Building, Newton, Iowa

Name of Scholarship or Name of Donor	Eligibility	Value	Colleges	Apply to
Monroe National Honor Society	Monroe High School senior chosen by faculty.	\$50	Any	Monroe High School Principal, Monroe
Monroe Kiwanis Club	Monroe High School senior	\$300	Any	W. B. Shaw, Monroe
Monona County Women's Club	Scholarships and loans available to Monona County students	Varies	Any	Mrs. Lloyd Cartmell President
Monona County PEO	Monona County resident	Loan fund	Any	Mrs. Helen Hopkins President
Monona County Farm Bureau Women	Graduate of each county high school application judged for merit.	\$60 for one year		Mrs. Elmer Hansen Chairman, Onawa, Iowa
Muscatine Knights of Columbus	Boy	\$200	Any college	
National Merit Scholarship	National Merit Qualifying Test to second semester junior and first semester senior. High school should be enrolled with Science Research Associates.	From \$100-\$1,500		National Merit Scholarship, 1580 Sherman Avenue, Evanston, Illinois--if high school Principal does not have materials.
National Association of Secondary Principals	Recommendation from high school Principal, aptitude test.	\$300	Any school that offers work leading to Bachelor's degree.	N.A.S.S.P., 1201-16th Street, N.W., Washington, D.C.
National Defense Education Act of 1958 or Public Law 85-864 or National Defense Student Loan Program	Must take Oath of Allegiance to United States of America and sign affidavit that you do not belong to any organization dedicated to the overthrow of the United States Government, must be accepted to full admission to participating junior college, college, university, capable of	Need, up to \$1000 per year maximum of \$5000, repayment and interest begins 1 year after leaving college, repaid in ten years, obligation cancelled upon death or total	Certain named colleges, see college section of this booklet, identified by the letters NDSLPL appearing at the top of the page of cooperating schools.	Make application directly with Admissions Office officials of the chosen college.

(more)

Name of Scholarship or Name of Donor	Eligibility	Value	Colleges	Apply to
National Defense Educa- tion Act (continued)	maintaining good standing in course with special considera- tion to those interested in teaching or in science, math, engineering, or modern foreign languages.	disability, 10% can- celled for each year up to 5 (50% of the loan) for each year borrower teaches in elementary or second- ary school.		
National Foundation Health Scholarships	Citizen of United States and interested to serve in field of health, graduate of high school, need, academic record, personal qualifications and professional promise.	\$500 a year for 4 years.	Colleges offer- ing Bachelor's degree in one of the 3 fields: Nursing, occupa- tional therapy, and physical therapy.	Health Scholarships Department of Pro- fessional Education, National Foundation 800-2nd Avenue, New York 17, New York.
National Honor Society Scholarships	Present senior class, obtain highest rating on PSAT and GAT tests, must be member of National Honor Society.	\$500 for 4 years, some up to \$1,000		National Association of Secondary School Principals, 1201-16th Street, N.W. Washington 6, D.C.
National Scholarship Service and Fund for Negro Students	Must be Negro, graduating high school senior, must have won a scholarship from a regionally accredited degree-granting in- terracial institution at which all campus facilities are ex- tended equally without regard to race, needs additional help.	Up to \$400 per year and renewable if the other scholar- ships are renewed and the fund has money available.	Regionally acce- dited degree- granting interra- cial institution.	National Scholarship Service and Fund for Negro Students, East 82nd Street, New York 28, New York.
Navy Wives Clubs of America	Natural-born or legally adopted child of member of Navy, Coast Guard or Marines on active duty or retired with pay, high school graduate, accepted by chosen college, good character, scholas- tic standing, need, have no other scholarship, physically able to undertake the course.	\$300 for freshmen year and may be renewed if need exists.		Mrs. Elise Skylstead Bureau of Personnel, Navy Department, Washington, D.C.

Name of Scholarship or Name of Donor	Eligibility	Value	Colleges	Apply to
Naval Reserve Officers Training Corps under Public Law 729-79	Male citizen of United States between 17-21 years, never mar- ried and agrees not to get mar- ried during period of training, physically qualified for mid- shipmen, must be high school graduate, merit, 4 years in service required.	\$50 per month for expenses such as board and room, draft deferment, 3 education cruises, (during summer), 4 year college sub- sidized by U.S. Navy.	52 leading col- leges and univer- sities.	Nearest United States Navy Recruiting Sta- tion or Chief of Naval Personnel, Navy annex, Washington D.C.
LaVerne Noyes	Citizen of United States, direct descent of World War I veteran, need, scholarship, graduation in upper 1/3 of class, with 2.5 average or better.	Fees--renewable upon maintenance of good scholar- ship.	Listed schools, those in Iowa are Coe, Cornell, Grinnell, ISU, SUI.	Chosen school
Newton Memorial Loan Fund	Graduate of Newton High School	Varies with need of applicant, re- payment and interest does not start until one year after grad- uation.		Newton Memorial Scholarship Fund, Ennis McCall, Sec- retary, Newton.
Onawa Kiwanis Club	Loan to Onawa resident, college students.	Varies	Any	Allen Muir Fund Chairman, Onawa
Proctor and Gamble	Men or women, high school grad- uates	Full tuition plus allowance for fees, books and supplies for four year col- lege.	47 named schools mostly in the East (none in Iowa) write for list of schools.	W. L. Romney, Direc- tor, Proctor and Gamble, Scholarship Program, Box 599, Cincinnati, Ohio.
Phillips Petroleum Company	Children of employees, high school record, character, citizenship, need.	\$500 per year, for maximum, \$2,000 for 4 years.	Any	Employed parent may follow instruction in employee publi- cations.
Radio Corporation of America	Enrollment in college, major- ing in science, industrial re- lations, dramatic arts or music.		One undergraduate scholarship at 34 colleges and universities.	Department of Public Affairs, RCA 30 Rockefeller Plaza New York 20, New York

Name of Scholarship or Name of Donor	Eligibility	Value	Colleges	Apply to
Retired Officers Association	Son or daughter of an officer or deceased officer of the Army, Navy, Air Force, Marines, Coast Guard, Coast and Geodetic Survey or U.S. Public Health Service, graduate from high school by the summer of the year applying, need, high character, good citizenship, dedicated to high ideals.	Interest free loan up to \$400 per year, may be renewed 3 times, maximum is \$1,600. Satisfactory grades and conduct to be eligible for renewals.		Secretary, Scholarship Committee, Retired Officers Association, 1616 Eye Street, N.W. Washington, D. C.
Rayburn-Webster Scholarship	Negro girl, resident of Iowa, outstanding academic record, need.	Varies	Any approved college	Scholarship Committee, Wilkie House Inc., 900-17th Street Des Moines, Iowa
Readers Digest	College achievement and need	Varies		College of choice
Dr. Salsbury Scholarships	Graduate of Charles City Community High School	\$500 per year for 4 years, 2 available.	Any leading to four year degree	Charles City High School Principal
Dr. Salsbury Employee Children Scholarships	Children of employees of Dr. Salsbury Laboratories.	Same as above		Same as above
Dr. Salsbury Nursing Scholarship		\$500		Same as above
Sibley Business and Professional Women's Club	One to a girl each year to be used toward a college education in preparation for career of applicant's choice, scholarship, contribution to community, extra-curricular and character.			
Sioux City Elks Club	High school senior	\$75--2 available	Any	Forrest Mallette Elks Club, Sioux City

Name of Scholarship or Name of Donor	Eligibility	Value	Colleges	Apply to
Sioux City Journal	Sioux City Journal carriers taking any college course.	\$250, one for city carrier, one for rural carrier.	Any	Mr. Bennett, Circulation Manager
Sears Roebuck Foundation (through National Merit Scholarship)	CEEB, upper 50% of senior class, children of Sears employees.	\$500	Any	To college of choice or National Merit Scholarship 20 Nassau Street Princeton, New Jersey.
Alfred P. Sloan Foundation	Male resident of the United States, must qualify for admission to participating college.	\$200 per year to \$2,000 per year	Listed schools (none in Iowa)	Director of Admissions, participating college
Sioux City Red Owl Store	Children of company employees			Red Owl Store Sioux City
Shell Oil Company Foundation	Through National Merit Scholarship	(See National Merit Scholarship)		Shell Companies Foundation, 50 W. 50th St. New York 20, N.Y.
State Board of Regents	Blind or deaf residents of Iowa	Fees	Institutions under State Board of Regents.	Director of Admissions, S.U.I., I.S.U., or S.C.I.
State Board of Regents	Resident of Iowa, college of liberal arts, engineering, business administration, nursing, and pharmacy. Students who are self-supporting who are unable to secure sufficient funds elsewhere, 2.5 or higher grade required.	Varies according to need.	Same as above	Same as above
Swisher Award	Valedictorian of West Waterloo High School.	\$100	Not stated	No application

Name of Scholarship or Name of Donor	Eligibility	Value	Colleges	Apply to
Dr. Tolliver Nursing Scholarship	Graduate of Charles City High School.	\$500	Not stated,	Charles City High School Principal
Tschirgi Foundation	Live in Linn County.	Tuition.	Coe, Cornell, S.U.I.	Admission Director of selected col- lege.
United Federal Savings and Loan Association of Des Moines	Not stated.	4 for \$800 to fresh- men.	Colleges belong- ing to Iowa Col- lege Foundation.	College of choice
Maude Warwick Fund for War Orphans	Orphans of World War II who are not eligible for assistance un- der War Orphans Education Assis- tance Act, must have good char- acter, scholastic record, future promise.	Varies according to need, can be ac- cepted even though student has other scholarship.	Any.	Mrs. Helen M. Dougherty, Sec- retary, 54 Morningside Drive New York 25, N.Y.
Waterloo Pan Hellenic Association	Graduate of a Waterloo High School.	\$250	Any.	School Superin- tendent's office
Western Union Telegraph Company	Must be employee five or more years whose salary is less than \$10,000 per year or child of active or retired such employee must be attending or have at- tended any college, ability, promise and character.	Primary award is \$1,600 per year, \$800 per year tui- tion and less than \$100 for room and board, maximum of 5 years, secondary award \$500 per year for five years.	Primary award good only at Cor- nell University secondary award may be used at any accredited college or uni- versity.	Scholarship Pro- gram, Employee Relations Depart- ment, room 2017, Western Union Telegraph Company 60 Hudson Street New York 13, N.Y.
Western Gold Association	Upper $\frac{1}{4}$ of high school gradu- ating class, must have 2 years caddying at a club which is a member of the Western Gold Association, need.	Four year scholar- ships to qualified caddies, 120 avail- able.	Not stated.	Western Golf Association, 8 South Dearborn St., Chicago, Illinois
Westinghouse Electric Corporation	Children of Westinghouse em- ployees or junior employees with two years service, CEEB test interview.	Varies.	Not stated.	Supervisor, Edu- cation Programs, Educational Depart- ment, Westinghouse Corporation, East Pittsburgh, Pa.

Name of Scholarship or Name of Donor	Eligibility	Value	Colleges	Apply to
George Westinghouse	Boys in top 10% of class in public, private or parochial high school in U.S. who can meet entrance requirements at Carnegie Tech, CEEB exam, (in scholastic aptitude), English composition, advanced mathematics, either chemistry or physics, personal interviews.	10 scholarships up to \$5,800 each for 4 years, must be applied toward Bachelor of Science in chemical, civil, electrical, mechanical or metallurgical engineering, or in mathematics, chemistry, physics, or industrial management.	Carnegie Institute of Technology	Director of Admissions (not later than December 1) Carnegie Institute of Technology, Pittsburgh 3, Pennsylvania
Westinghouse 4-H Electric Program	Boy or girl in 4-H work at least 14 but not more than 21 years of age on January 1 of contest year and must have completed 3 years of 4-H work, general 4-H record, 4-H electric program record.	State winners get trip to 4-H Congress and 6 national winners get \$400 college scholarships.	State Agricultural College, any other selected by winner.	Obtain award program leaflet from 4-H leader or County Extension agent.
Weyerhaeuser Lumber Foundation	Children of fulltime employees of company whose parents have completed 3 years of continuous service, parent base pay less than \$925 per month. Student must qualify for college admission. In case no Weyerhaeuser candidate is successful in a given year, 1 scholarship is given to a boy majoring in Forestry who qualifies, the college receives an additional grant.	Up to \$1,000 per year plus room and board up to \$600 per year, renewable for three more years. (See National Merit Scholarship)	Any accredited four year college or university in the United States	Vice-President of Weyerhaeuser Lumber Foundation, Tacoma Building, Tacoma, Washington

SECTION III

This section contains a list of general scholarships that may be used at various colleges. They are listed alphabetically by subject matter fields. Since this booklet is devoted, primarily, to listing financial aids for which college freshmen are eligible, and most colleges require a year or more of liberal arts study before students begin to concentrate into college major subjects, students may find more help in the liberal arts sections. There are many scholarships available in most subject matter fields for upper classmen and graduate students. Information about these should be secured from the school selected by the student.

AGRICULTURE

Name of Scholarship or Name of Donor	Eligibility	Value	College	Apply to
Shenandoah Farmers Co- operative Exchange	College freshmen who will major in agriculture or home economics.	\$250	Any school offering majors in agriculture and home economics.	Shenandoah Farmers Cooperative Exchange

See also Iowa State University in Section I for scholarships.

#####

ART

Scholastic Magazine Art Awards	Graduate from high school in year of application. Must be able to meet admission requirements of the school in which scholarship is to be used.	Varies, tuition for one year.	One of 70 art colleges and universities.	Scholastic Magazine Art Awards, 33 West 42nd Street, New York 36, N.Y.
--------------------------------	---	-------------------------------	--	--

#####

CHRISTIAN VOCATIONS

American Baptist National Scholarship	Active member of American Baptist Church at least 1 year. Family income below \$8,000, CEEB, leadership, Christian commitment, service potential.	\$500 per year for 5 years, 4 available.	Any.	Department of Educational Services, Amer. Baptist Convention, 21st floor 152 Madison Avenue New York 16, N.Y.
---------------------------------------	---	--	------	---

CHRISTIAN VOCATIONS. (continued)

Name of Scholarship or Name of Donor	Eligibility	Value	College	Apply to
Iowa Baptist Convention Gilliland Memorial Fund Loan	Character and ability.	Varies, student signs note, repay- ment after student is working, interest at low rate.	Any technical or liberal arts col- lege.	Iowa Baptist Con- vention, Baptist Building, 1114 Grand Avenue, Des Moines.
Iowa Society of Christian Churches (Disciples)	Member of Disciples of Christ Church, must maintain at least 2.0 grade point, need, pre- paring for church vocation.	Up to $\frac{1}{2}$ tuition (de- creased by value of any other scholar- ship received).	Any college in Iowa, also Disci- ples of Christ related colleges outside of Iowa.	State Office 1150-25th Street Des Moines, Iowa
Iowa Synod American Lutheran	Men preparing for ministry. (In addition, many congrega- tions help own members to at- tend Lutheran Colleges).	Loan, scholarship, up to \$1,200, $\frac{1}{2}$ cancelled at time of ordination. Half to be repaid.	Lutheran Affili- ated Colleges.	Contact college of your choice.
Maquoketa Lutheran Church	Member of Maquoketa Church. Student preparing for minis- try.	\$50 per year for 4 years, college and/or seminary.	Same as above.	Pastor of Maquoketa Lutheran Church
Young People's Lutheran League		\$200	Attend a Lutheran College.	College of your choice
Methodist National Schol- arship	Member of Methodist Church. In upper 15% of high school class (grades "B" or better).	Maximum \$400 first year, renewable, loans from \$200 to \$500, available from this source.	Any accredited Methodist College or University.	National Methodist Scholarship officer in Methodist College
Methodist Student Loan	Methodist student, citizen of U.S., at least 17 years old, "B" or better average in high school for term preceding application, and be partially self-supporting.	Up to \$1,500 in en- tire educational program, repayment begins six months after graduation.	Same as above.	Wesley Foundation Director at Metho- dist College
National Assistance Pro- gram	Child of fulltime religious leader employed by a church judiciary of United Presbyterian Church of the U.S.A.	\$100-\$800 according to need.	Presbyterian re- lated schools.	Office of Educational Loans and Scholarships 830 Witherspoon Bldg. Philadelphia, Pa.

CHRISTIAN VOCATIONS (continued)

Name of Scholarship or Name of Donor	Eligibility	Value	College	Apply to
United Presbyterian Church of U.S.A. National Schol- arships	High school senior, member of Presbyterian Church, in top 1/3 of class at end of junior year. CEEB test taken in December. Leadership, Chris- tian character, personality, need, apply by November 8.	\$100-\$1,000 accord- ing to need, renew- able if superior work and need con- tinues.	Presbyterian re- lated schools.	Office of Educational Loans and Scholar- ships. 830 Withers- poon Building, Philadelphia, Pa.
Samuel Robinson Scholar- ship (Westminister Shorter Catechism Schol- arship)	Freshmen or sophomore in Pres- byterian College. Recite 107 answers to Westminister Shorter Catechism and write 2,000 word original essay on catechism.	\$200	Presbyterian re- lated schools.	Office of Educa- tional Loans and Scholarships. 830 Witherspoon Bldg. Philadelphia, Pa.

#####

ENGINEERING

See also State University of Iowa and Iowa State
University in Section I

Cedar Rapids Engineer's	Good academic record, engi- neering freshmen.	\$200 to engineering freshmen.	Any engineering school.	High school coun- selor.
Collin's Radio Company	Meet entrance requirements of school of choice.	\$2,500 to each school, amount per student at discre- tion of the Dean.	I.S.U., S.U.I., Illinois, Minne- sota, Oregon State, Southern Methodist.	Dean of Engineering of College
General Motors Institute	Cooperative program in Gen- eral Motors plants and divi- sions, leads to Bachelor's degrees.	Work six weeks, six weeks instruction.	General Motors Institute or en- gineering schools near General Mo- tors plants.	Ray H. Bechtold, Registrar, General Motors Institute Flint, Michigan

Name of Scholarship or Name of Donor	Eligibility	Value	College	Apply to
Hertz Engineering Scholarship	Mechanical and electrical engineering student, must need aid, be excellent in mathematics and science.	\$100-\$2,000 per year and renewable for 4 years.		Administrator of Hertz Engineering Scholarship Foundation, 33 N. LaSalle Street, Chicago 2, Illinois
Howard Green Award	Engineering student doing good work who needs assistance.	\$750 plus summer employment.	S.U.I. and I.S.U.	Chairman of Scholarship Committee Cedar Rapids Elks
Lockheed Leadership Fund	Any U.S. citizen, senior in public, private, or parochial high school, under 25 years of age.	\$500 plus tuition and fees, 10 available.	Specified colleges (none in Iowa).	Lockheed Leadership Fund, P.O. Box 551 Burbank, California
Muscatine Engineer's Club	Need.	\$200	Recognized school of engineering.	Muscatine Engineer's Club, Muscatine
Sioux City Engineer's Club	Graduate of Sioux City High School.	Tuition first year.		Committee of Engineer's Club in cooperation with high schools.
Union Carbide Educational Fund	Necessary aptitude and intention to pursue engineering career.	35 scholarships available.	Accredited engineering school.	High school counselor or Union Carbide Educational Fund, 270 Park Ave. New York 17, N. Y.

#####

HOME ECONOMICS

See also Iowa State University in Section I

Betty Crocker Search for "Homemaker of Tomorrow"	Girl interested in homemaking Take SRA test.	\$1,500 to each state winner, \$3,500 to national winner.	Any home economics college.	Betty Crocker Search General Mills Inc. Minneapolis, Minnesota
--	---	---	-----------------------------	--

HOME ECONOMICS (continued)

Name of Scholarship or Name of Donor	Eligibility	Value	College	Apply to
Iowa Home Economics Association	Senior girl in accredited Iowa high school, need, schol- arship, 4-H or FFA record, character, personality, in upper $\frac{1}{4}$ of high school class, and intends to graduate from a 4 year home economics course and enter professional home economics career.	\$250 per year for 2 years, must main- tain at least "C+" average.	Any home econo- mics college.	Miss Margaret Briggs Chairman, Scholar- ship Committee, Iowa Home Economics Asso- ciation, 542 State Office Building, Des Moines 50319, Iowa
Kroger Company	Graduate of accredited high school.	\$250 to home econo- mics major.	Land Grant College College (Iowa State Univer- sity is the only one in Iowa).	

#####

LAW

Drake and the State University of Iowa have the only law schools in Iowa. There are many scholarships, loans, and fellowships available to law students, but since law students must complete at least three years of college before entering the law school, these aids are not included in this book.

#####

MEDICINE

As stated for law, medicine is a graduate course, and the many scholarships and fellowships available to medical students are not included in this book.

Name of Scholarship or Name of Donor	Eligibility	Value	College	Apply to
United States Military Academies	Male citizen of the United States between 17 and 21, single, pass mental and physical tests. Nominated by a senator or representative. EXCEPTION: Sons of Congressional Medal of Honor winners may be appointed to service to academy of choice provided they are qualified men between 17 and 21. <u>All</u> candidates eligible under this section may be appointed. There is no number limitation. (Apply full year in advance.)	All education expenses plus allowance. Graduates receive commissions and Bachelor of Science degree.	Army Military Academy, West Point, New York	Adjutant General, Department of Army Washington, D.C. Attention: AGPB-M
			Naval Academy Annapolis, Maryland	Chief of Naval Personnel, Navy Department, Washington, D.C.
			Air Force Academy, Colorado Springs, Colorado	Appointment Branch Air Force Headquarters, U.S.A.F. Washington, D.C.
			Coast Guard Academy, New London Connecticut	Commandant (PTP-2) United States Coast Guard, 1300 E. Street, N.W. Washington, D.C.
			Merchant Marine Academy, Kings Port, Long Island, New York.	Write to the Academy.
Reserve Officer Training Programs, Army and Air Force	Students may enroll as freshmen in colleges and universities in each state. Must be high school graduates. Unmarried.	Graduates receive commission and Bachelor of Science degree, advanced students receive monetary allowance.	Colleges offering the program.	Army recruiting stations, colleges and universities or Chief of the U.S. Army Reserve and ROTC Affairs, Washington, D.C. Air Force write Commandant Air Force ROTC Maxwell Air Force Base Alabama

Name of Scholarship or Name of Donor	Eligibility	Value	College	Apply to
Heinz Scholarship	Interest in food service, in upper 25% of high school class, need.	\$400 first year, \$200 next 3 years, total \$1,000.	Any college offering 4 year Restaurant Administration Course.	Educational Department, National Restaurant Association, 8 South Michigan Avenue, Chicago 3, Illinois
Iowa Tobacco Distributors Association	Son or daughter of association member who submits an essay which is judged best by representatives of the two state universities and the editor of the editorial pages of the Des Moines Register and Tribune.	\$250 annually.		Ralph Kittinger Executive Secretary 703 Empire Building Des Moines, Iowa
Iowa Power and Light Company	Regular fulltime employees who complete courses approved by the company.	Refund of $\frac{1}{2}$ tuition \$100 per year maximum.		Company supervisor
Iowa Society for Crippled Children and Adults Inc,	Students going into field of rehabilitation work.	\$100 per person.		Rolfe B. Karlson, Dir. Box 911, Des Moines
James S. Kemper Foundation	Interest in career in insurance.	Tuition and cost for 5 years of college.	College teaching insurance administration.	Director of Admissions of college
National Association of Retail Grocers P. D'agostino Scholarship	Children of operators, executives and staff of retail food stores and boys or girls who work part-time in retail food stores.	\$1,000 (the high school whose student is award winner will also receive \$250 to be used as faculty chooses to advance its educational program.)	Any accredited 4 year college or university.	Mrs. Marie Kiefer Executive Director National Association of Retail Grocers 360 North Michigan Ave. Chicago, Illinois
National Association of Tobacco Distributors	Son or daughter of salesman, or any other employee of the National Association of Tobacco Distributors,			Ralph Kittinger Executive Secretary 703 Empire Building Des Moines

MISCELLANEOUS (continued)

Name of Scholarship or Name of Donor	Eligibility	Value	College	Apply to
National Foundation Health Scholarship	High school graduate entering baccalaureate degree program in physical therapy, or occupational therapy, or professional nursing.	Not stated, but renewable for 4 years.		National Foundation Health Scholarship 800 2nd Avenue New York 17, N. Y.
National Scholarship Trust Fund of the Graphic Arts	High school graduate within 3 years of application. CEEB test, need, interest in career in printing and publishing.	\$100-\$1,000 per year, depending on need, 9 available throughout the United States.	Colleges with courses in printing, engineering, teaching or management.	National Scholarship Trust Fund, Education Council of the Graphic Arts Industry, 5728 Connecticut Avenue, N.W., Washington, D.C.
Oliver Corporation	Scholarships to six national winners in Dairy Awards Program.			Local 4-H Clubs administer the program.
Des Moines Register and Tribune	Carrier salesman.	\$300 toward college expense.		R. C. Furman, Chairman of Scholarship Committee, 715 Locust Street, Des Moines
	Second program is for sons and daughters of employees of the Register and Tribune.	\$500 per year, 8 available.		Same as above
Super Valu Stores Inc.	Two scholarships, one to employee or son of employee, other to son of affiliated Super Valu retailer or an employee, taking mass marketing program.	\$1,000 to winner \$500 to the university.	Michigan State University.	Michigan State University, East Lansing, Michigan

#####

MUSIC

Most scholarships for freshmen intending to major in music are listed in liberal arts colleges.

Mr. and Mrs. Verbyl Schnepf	Senior in Fremont County who intends to complete 4 years of college with music major.	\$100	Any	D. D. Fellows, County Superintendent Sidney, Iowa
-----------------------------	---	-------	-----	---

Name of Scholarship or Name of Donor	Eligibility	Value	College	Apply to
---	-------------	-------	---------	----------

Nursing scholarships available to students entering the freshman year of a course leading to the baccalaureate degree should look for aids available in liberal arts colleges. (For instance, see University of Iowa, Section I) Aids available in hospital type programs are not within the scope of this book. Students should inquire at the hospital of their choice.

#####

PHARMACY

NOTE: The only Pharmacy colleges in Iowa are at Drake and the University of Iowa at Iowa City. Most colleges require at least a year of college work before beginning the concentration in pharmacy. Very few pharmacy scholarships are available to college freshmen. See also Drake University and State University of Iowa Section I. Check liberal arts scholarships.

I. W. Myers Scholarship	Boy or girl pharmacy student.	\$125	1 at Drake and 1 at S.U.I.	Dean C. Zopf, S.U.I. Dean Byrl Benton, Drake
Iowa Pharmacy Foundation Scholarship	Boy or girl pharmacy student.	\$150 at S.U.I., with ten available, \$300 at Drake with five available per year.	Same 2 schools as above.	Same as above
Nietzel Pharmacy Inc.	Muscatine graduate showing leadership.	\$300	Any accredited pharmacy school.	High school Princi- pal or Dean of the Junior College at Muscatine, Iowa
Pepsodent Presidential Scholarship	Boy or girl pharmacy student awarded alternately by Drake and S.U.I.	\$100 for 3 years. \$200 for 4 years.	Drake and S.U.I.	See first entry above.
Polk County Pharmacy Association Scholarship	Need, pharmacy students.	Varies according to need.	Same as above	Same as above
Ford Hopkins Scholarship	Need, pharmacy student.	Tuition.	Same as above	Same as above

Name of Scholarship or Name of Donor	Eligibility	Value	College	Apply to
Dow Chemical Company Scholarship	Outstanding high school senior, scholarship, character, school activities, interest in chemistry.	\$500 per year, summer work with company after junior or senior year.		Chemistry Department, end of first semester high school year.
Iowa Talent Search	High school senior, must enter science talent search conducted by Science Clubs of America.			Science Clubs of America, 1719 N. Street, N.W. Washington, D.C. or J. D. Woods Department of Chemistry, Drake University, Chairman of Iowa Talent Search.
Science Talent Search Westinghouse Scholarships	Boy or girl high school senior who has not competed before, science aptitude test. High scholastic record, recommendation of high school teachers, 1,000 word report on science project. Interview of 40 finalists in Washington D.C.	Five day all expense trip to Washington D.C. for 40 finalists. 1-\$7,500 scholarship 1-\$6,000 1-\$5,000 1-\$4,000 1-\$3,000 35-\$250		Science Clubs of America, 1719 N. Street, N.W. Washington, D.C.

#####

TEACHING

Iowa Congress of Parents and Teachers Loan	Resident of Iowa, average or better than average high school grades. Need, must enroll in course leading to Iowa teacher's certificate.	\$300 maximum per year, \$800 total 2% interest from date of note, repayment in 5 years from time begins to earn.	Any college accredited for teacher preparation for Iowa state teacher certificate.	Iowa Congress of Parents and Teachers Student Loan Committee, 412 Shops Bldg. Des Moines, Iowa
--	---	---	--	--

Name of Scholarship or Name of Donor	Eligibility	Value	College	Apply to
Iowa Farm Bureau	One available in each of 18 Farm Bureau districts. Recommendation by school officials, questionnaire filled out by applicant. Must intend to teach.	\$60 each for 2 years.	Any college accredited for teacher preparation for Iowa state teacher's certificate.	Farm Bureau in applicant's district.
Keokuk County Farm Bureau	Prospective teacher	\$200 for 1 year	Same as above	Keokuk County Farm Bureau
Lyon County Farm Bureau	Graduate of Lyon County High School, must intend to teach.	\$25 to 1 graduate of the 4 high schools.	Same as above	High school faculty
Maquoketa Teacher's Association	Graduate of Maquoketa High School intending to teach.	\$100	Same as above	Maquoketa High School
Mount Vernon PTA	Senior in Mount Vernon High School in upper $\frac{1}{2}$ of class and intends to teach.	\$100	Same as above	Mount Vernon High School Faculty

#####

STATE LIBRARY OF IOWA



3 1723 02092 0096