



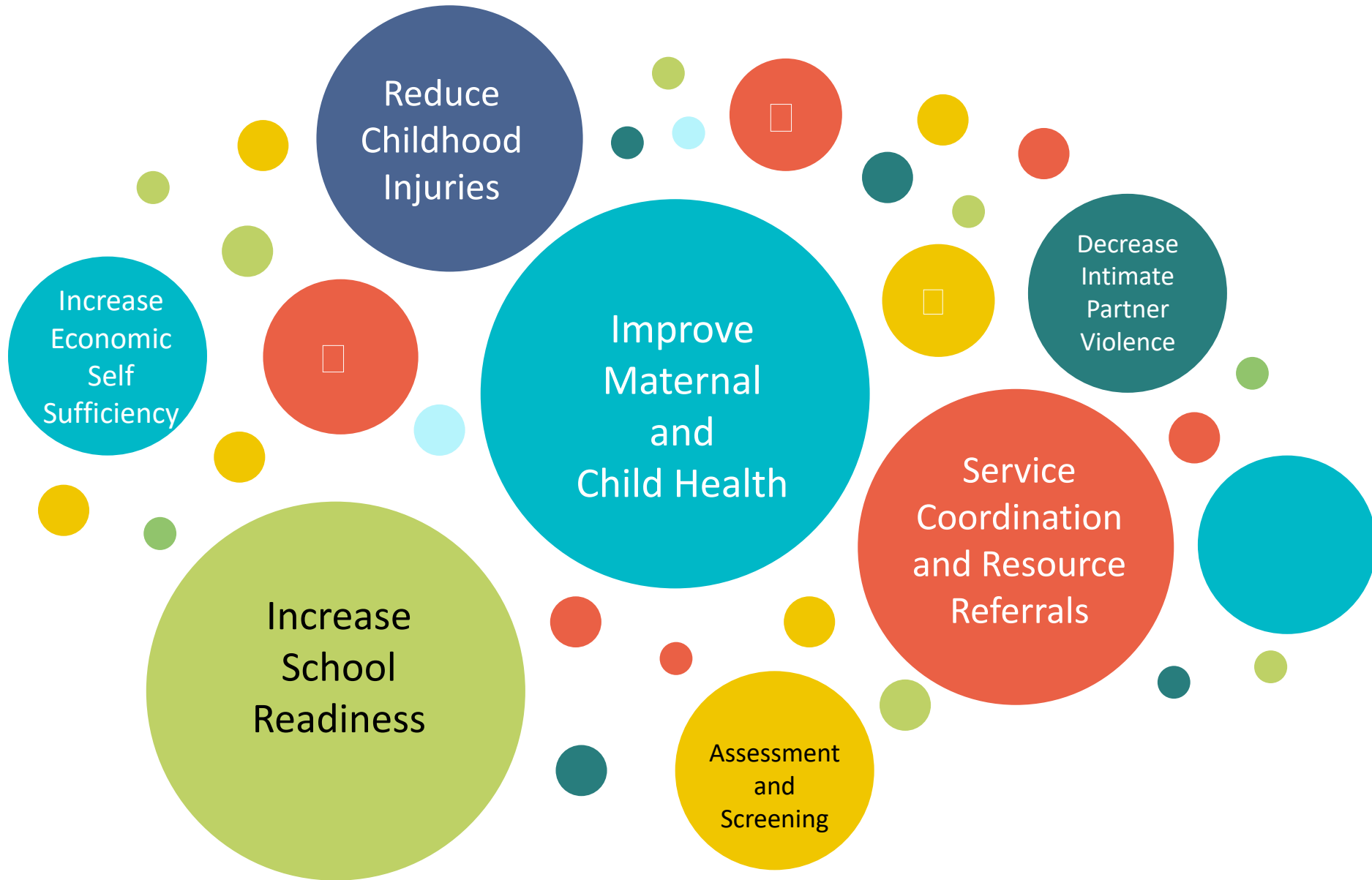
Family Support Programming
Annual Report
July 1, 2020 to June 30, 2021

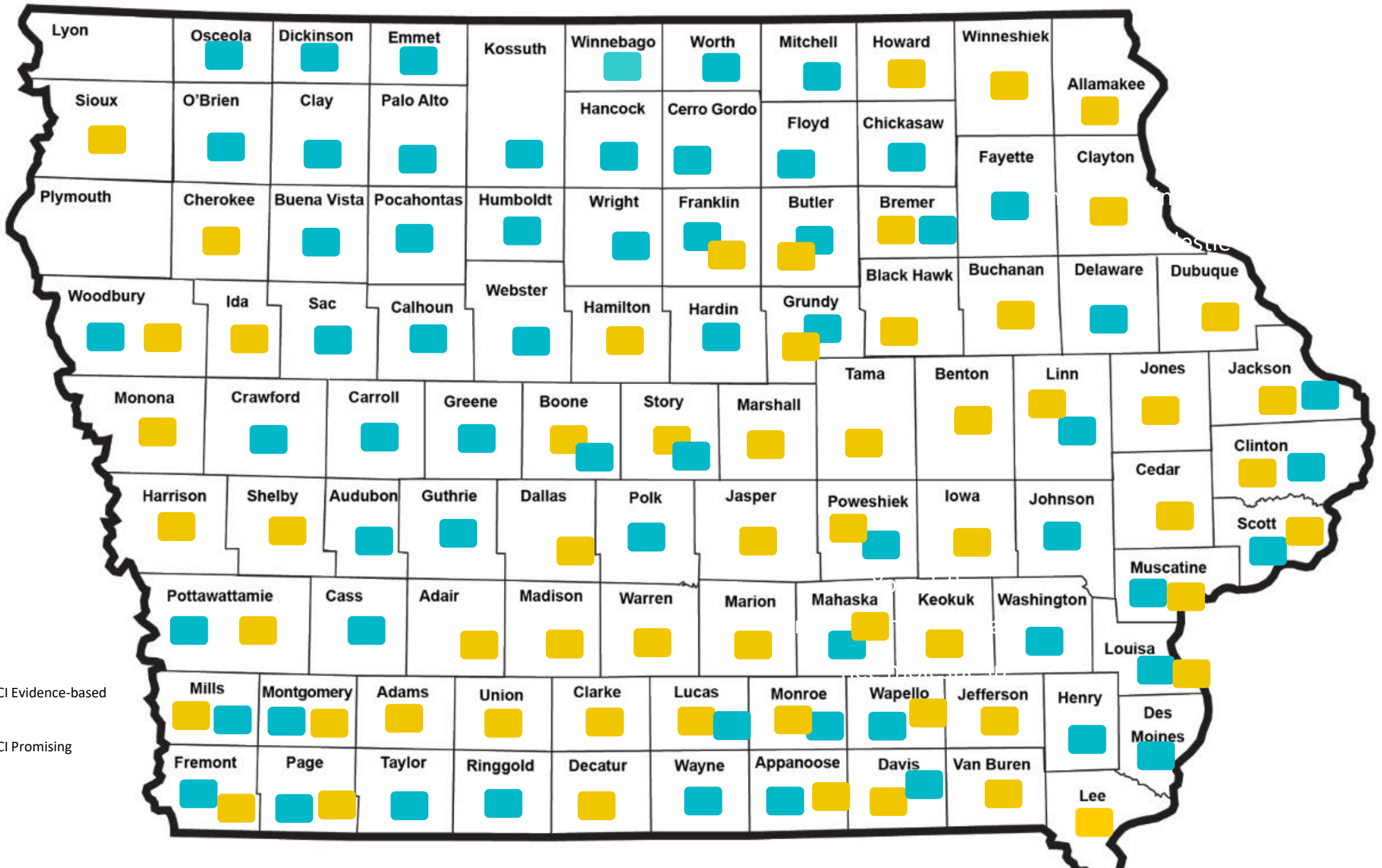
ABOUT US

What is Family Support? includes group-based parent education or home visiting programs that are designed to strengthen protective factors, including parenting skills, increasing parental knowledge of child development, and increasing family functioning and problem solving skills. A family support program may be used as an early intervention strategy to improve birth outcomes, parental knowledge, family economic success, the home learning environment, family and child involvement with others, and coordination with other community resources. A family support program may have a specific focus on preventing child maltreatment or ensuring children are safe, healthy, and ready to succeed in school.

Models: Healthy Families America (HOPES-HFI), Home-based Early Head Start, Family Connects, Nurse Family Partnership, Parents as Teachers and locally developed models

Delivered by **Nationally Credentialed Family Support Professionals**

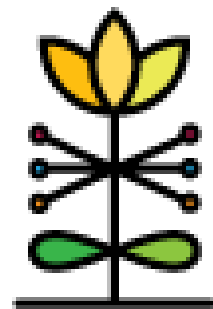




■ ECI Evidence-based
■ ECI Promising

Data Source

- DAISEY is a dynamic data system.
- Data reports were pulled on 9/16/21 and 9/17/21 and are saved as the official record.
- Changes to the data that occur after the reports are not reflected in the official records.

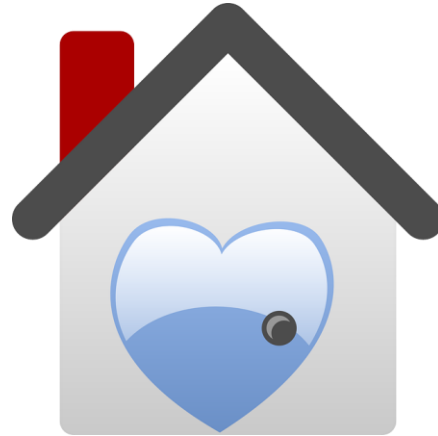


DAISEY

connecting the first five years to a lifetime of success

What Did We Do?

7,319 families
served



9,075 children 0 – 5
served

63,322 home
visits provided

9,502 parent education groups
provided

Who Do We Serve?

63%

Families with Low Incomes

- Families with incomes at or below 125% of poverty. For a family of three in 2021 that is \$27,450 or \$13.20 per hour/40 hours per week

62%

Families with Low Education

- Primary Caregivers with a high school diploma or less education

Pregnant Women and Families with children 0 - 5

18%

Young Parents

Primary Caregivers are 21 years or younger

29%

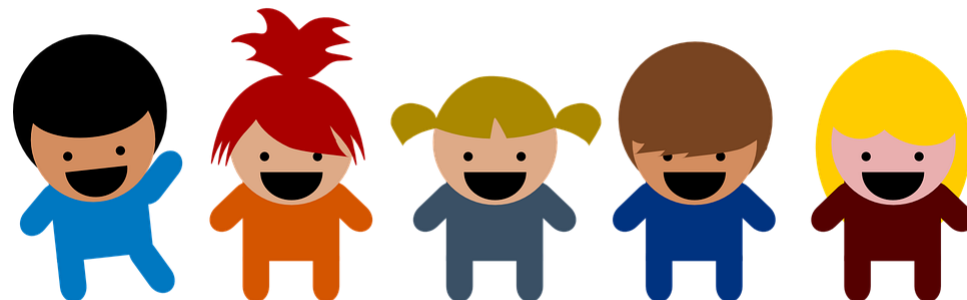
English Language Learners

Identified a language, other than English as their home language.

40%

First Time Parents

First time parenting children



What Difference Did We Make?

88% of children were on track in the developmental domain of **social emotional**.

93% of families improved or maintained **healthy functioning, problem-solving and communication**.

17% of children screened for **developmental delays** needed referral for early intervention

21% of mothers screened for **depression** needed referred for additional assistance

ASQ Developmental Screening Results

On Track

Monitoring Needed

Referral Needed

Communication

86%

8%

6%

Fine Motor

87%

8%

5%

Gross Motor

89%

6%

5%

Social/Emotional

88%

7%

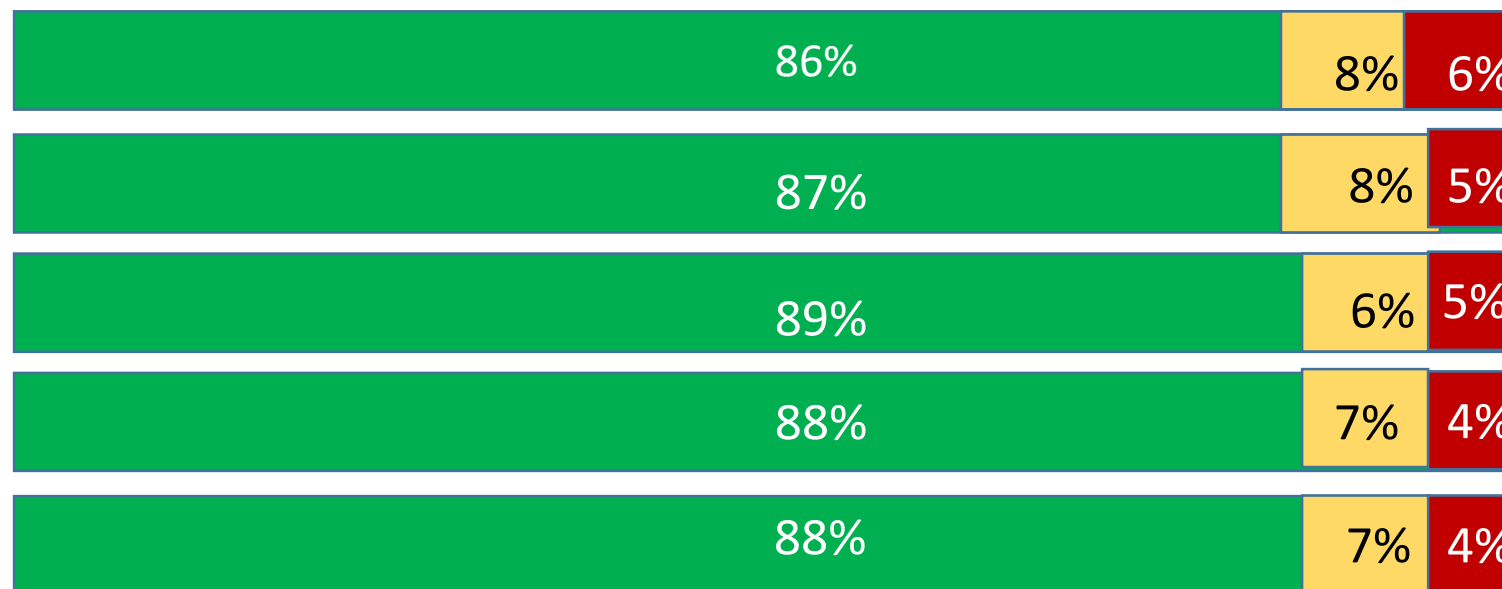
4%

Problem Solving

88%

7%

4%



ANY QUESTIONS?

THANKS FOR LISTENING!

Janet Nickell Horras
State Home Visitation Program Director
Iowa Department of Public Health
Janet.Horras@idph.iowa.gov

Shanell Wagler or Amanda Winslow
ECI Office - Iowa Department of
Management
Shanell.Wagler@iowa.gov or
Amanda.Winslow@iowa.gov