

Early Childhood Iowa



2015 Annual Report



Dear Iowans:

Early Childhood Iowa is pleased to share the 2015 annual report. As a volunteer to this effort, I'm proud to play a small part in supporting the programs, services and activities that support our youngest children and their families. As this initiative grows and matures, this report shares information about the results from the cadre of services and system improvements being supported in Iowa's early care, health and education system.

Early Childhood Iowa (ECI) is founded on the premise that government and communities can work together so that 'every child, beginning at birth, will be healthy and successful'. ECI coordinates efforts to build a stronger foundation to support the system. Highlights and examples of this year's activities and successes are included in this year's report.

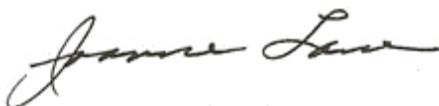
As a nation, we are reminded about the importance of investing early. A child's quality of life and the contributions he or she will make to society can be directly traced to the first few years of life. High quality early education yields higher graduation rates, reduced crime, higher earnings, and better jobs. As a result, economists estimate that every dollar invested in early education produces a 7-10% return on investment through increased personal achievement and social productivity.

There are 38 ECI Areas that cover the entire state. Each area has its own leadership and locally-developed community plan. In those areas, local board members and community partners come together to build a stronger community of services as described in their community plans. In this report, you will see a highlight of the results of their efforts through program performance measures data.

During this year, ECI gathered input, reviewed data from assessments and reports to develop a strategic plan for Early Childhood Iowa. The process supports strengthening of partnerships and working towards common goals and outcomes. The work keeps the greatest needs of our youngest Iowans at the forefront. Their voices can't be ignored if our state is to be strong in the education, economic and global sectors. The three identified goals are:

- Establish and Promote a Solid Infrastructure to Advance the Early Childhood System
- Ensure Access to High Quality Services for Young Children and their Families
- Build Public Will for Supporting Young Children and their Families

Early Childhood Iowa is ready, able and positioned to help bridge those platforms and build a future generation of Iowans who will stay, work and prosper in this great state. Thanks to everyone who contributed to this worthy effort.



Joanne Lane, Chairperson
Early Childhood Iowa State Board

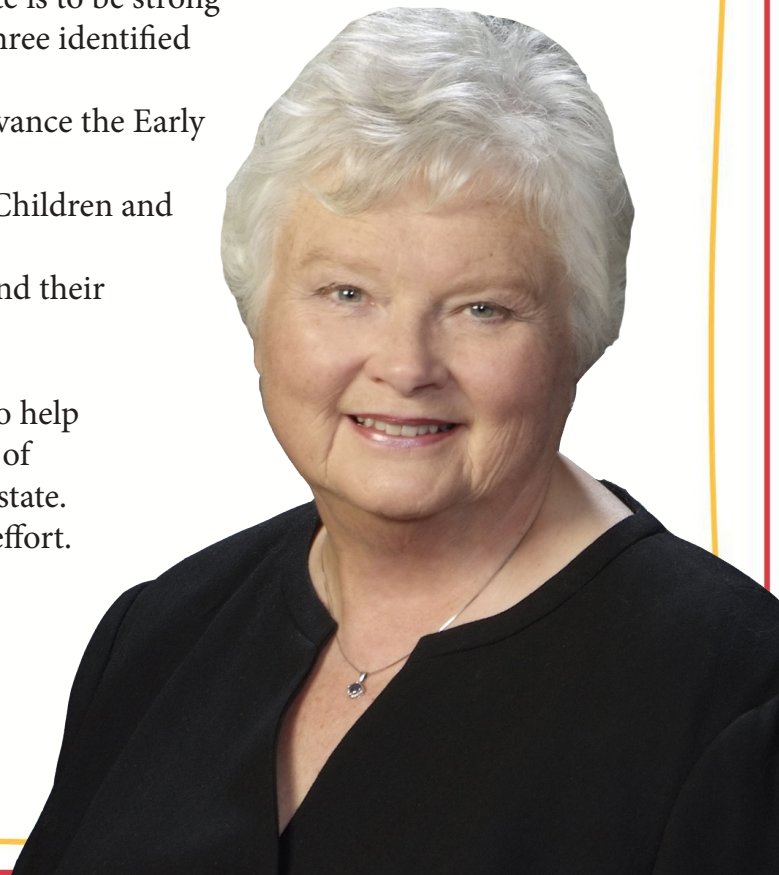


Table of Contents

ECI Overview	4
Results Accountability	6
Family Support	7
Result Pages:	
<i>Healthy Children</i>	8
<i>Children Ready to Succeed in School</i>	10
<i>Secure and Nurturing Early Learning Environments</i>	12
<i>Safe and Nurturing Families</i>	14
<i>Safe and Supportive Communities</i>	16
<i>Professional Development</i>	18
ECI Admin	19
ECI System	20
Addendum to the Report	21



ECI Overview

The vision for Early Childhood Iowa is, “Every child, beginning at birth, will be healthy and successful.” There is no single strategy to make this happen. It takes a system of systems for a child to reach their potential. These individual systems include early care, health and education. The ECI State Board, the ECI Stakeholder Alliance and local ECI Area Boards are charged with developing, supporting and maintaining effective, efficient and integrated systems.

ECI was first approved in legislation in 1998 but was known then as Iowa Community Empowerment. In 2008, state policy makers enacted Early Childhood Iowa for state system development. In 2010 the two initiatives were brought together under the banner of Early Childhood Iowa.

The founding legislation for ECI (then Iowa Community Empowerment) established five results to be achieved at both the state and local level and utilized the Accountable Government Act as the standard for measuring progress toward accountability. A result was defined as “the effect desired for all Iowans.” The results described in legislation are:

- Healthy Children
- Children Ready to Succeed in School
- Safe and Supportive Communities
- Secure and Nurturing Families
- Secure and Nurturing Early Learning Environments

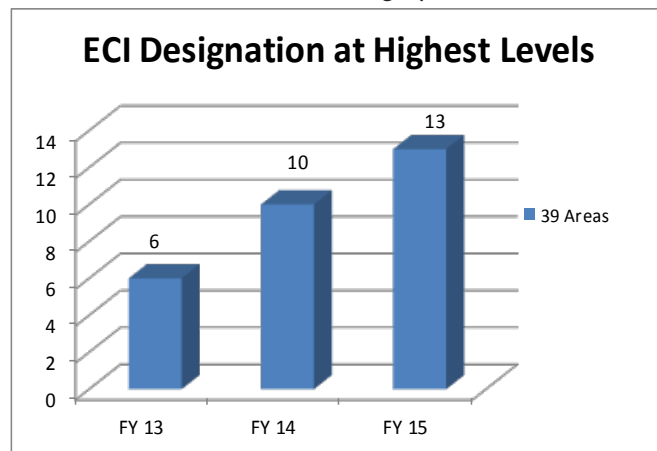
The current reality in Iowa is that programs, polices, and systems are inadequate to do all the work necessary. In order to achieve the results, ECI has undergone a process with over 150 early childhood stakeholders providing input to create a system-wide strategic plan and the goals below focus and will guide their work with limited resources in developing an integrated and quality early childhood system of systems for young children and their families.

The three identified goals are:

- Establish and Promote a Solid Infrastructure to Advance the Early Childhood System
- Ensure Access to High Quality Services for Young Children and their Families
- Build Public Will for Supporting Young Children and their Families

ECI System Activities and Accomplishments to support these goals in FY15 include:

- 13 ECIA boards have achieved Quality or Model designations; the two top levels of the Levels of Excellence Rating System.



- The State Board conducted a site visit to the Pottawattamie County ECI area, meeting with local board members, program providers and community partners.
- The ECI Stakeholders Alliance Professional Development Component Group and Iowa AEYC hosted the Training Coordinators Summit. This was a day of collaboration for training coordinators across systems to share training plans, roadblocks, and strengths. The goal for this day was to encourage increased cross-sector collaboration state-wide across systems, and within Iowa regions.
- The Stakeholder Alliance, through its Equity Advisory Committee, successfully applied for a technical assistance grant from the BUILD Initiative to support work in developing more diversity in early childhood leadership and workforce, including professional development in supporting racial, cultural and linguistic competence. The grant culminated with a statewide Equity Summit.
- Iowa Child Care Resource and Referral and the ECI Public Engagement Component Group (Parent Engagement Work Group) collaborated to convene early childhood professionals from various agencies and child care providers in Iowa to create materials for parents who are looking to choose quality child care. The goal of this project, **Choosing Quality Child Care Core Knowledge**, was to take the most important Iowa regulations and best practices of child

care and present them in a way that could be used by any agency to develop educational resources for parents. Early childhood professionals can use the new core

Choosing Quality Child Care Core Knowledge

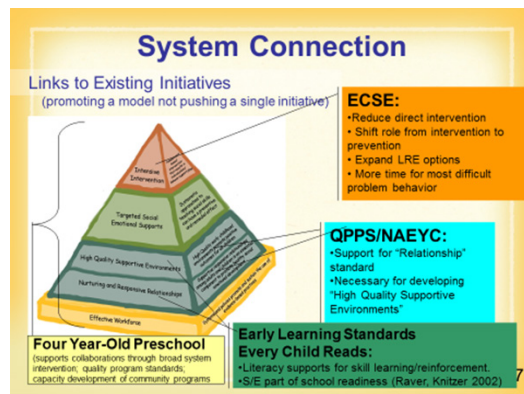


knowledge document to narrow down topics to make selecting child care easier for parents.

- In collaboration with the Iowa Association for Infant and Early Childhood Mental Health, ECI provided funding to implement a licensed, competency-based endorsement system that recognizes professionals with specialized knowledge and skills in early childhood mental health. Developed in Michigan in 2002, this four-tiered endorsement system has been implemented in 26 states, resulting in significant impact on policies, practices, higher education, training and research. It is anticipated that implementation of this standardized system of competencies and endorsement will, in time, enhance the quality of Iowa's mental health delivery system and inform policy and practice change to better support young children's healthy mental development.
- ECI sponsored a variety of state-wide professional development training sessions and informational opportunities both in person and via webinars throughout the year. Topics included advocacy, child care development block grant reauthorization, meeting facilitation, community impact, and using social media.
- In FY 2015, the ECI Office began publishing a newsletter, ECI Monday Musings. It is a weekly compilation of information, practical advice, training announcements, and success stories. The content is from early childhood state, federal, research institutes and the private sectors. Monday Musings is intended to disseminate information to Early Childhood Iowa Stakeholders and others in a timely fashion. To view editions of ECI Monday Musings visit <http://www.earlychildhoodiowa.org>.



- The State Leadership Team (SLT) for the Early Childhood Positive Behavioral Interventions and Supports (EC-PBIS) became a committee of the ECI Quality Services and Programs Component group. The mission



of the EC-PBIS State Leadership Team (SLT) is to develop the state infrastructure so that all early care, health and education providers successfully implement the Pyramid Model of positive behavior supports with fidelity. To accomplish the mission, the SLT uses data informed decision making to develop policies, procedures, and tools to ensure:

- o Consistent practice;
- o Quality implementation;
- o Engagement of family and community as critical partners;
- o Continuous improvement; and
- o Implementation sustainability.
- In FY '15, usage of the ECI website included 13,697 users. Of those, 58.78% were new or first-time visitors on the website. Through the fiscal year, there were 84,939 page views (hits).



Results Accountability

Accountability for results continues to be the hallmark of ECI. The following pages showcase the data collected by ECI.

When looking at this information, it is important to realize that the Early Childhood Iowa initiative is not a program in and of itself. Instead, ECI funds are legislated to support existing local programs and services by filling gaps – most often by allowing additional families/children to be served, or by increasing the quality of the services provided. As the coordinating body within their ECI area, it is the ECI Area Board’s responsibility to pull the community together to collectively determine the strengths, gaps and needs of the families and young children served. Ultimately, the board makes funding decisions that will impact the priorities determined through the strategic planning process.

Presentation of the Report Data:

The data within this report is organized by Result area and showcases information at the state level (indicators), as well as local program data.

The presentation of the data utilizes the following sequence:

Results

At its inception in 1998, legislation established five results to be achieved, both statewide and at the local level. ECI (then Community Empowerment) utilized the Accountable Government Act as the standard for measuring progress toward accountability. A result is defined as *“the effect desired for all Iowans”*. The legislated results are:

- Healthy Children
- Children Ready to Succeed in School
- Safe and Supportive Communities
- Secure and Nurturing Families
- Secure and Nurturing Child Care Environments

Indicators

The Early Childhood Iowa State Board collects and reports statewide indicator data to quantify and track progress toward the statewide results. An indicator is *“a measure that directly or indirectly quantifies the achievement of a result. It measures the whole population, rather than those served by a specific program. More than one resource, program or service is necessary to improve an indicator and it often requires collaboration to reach the goal.”*

Program Performance Measures

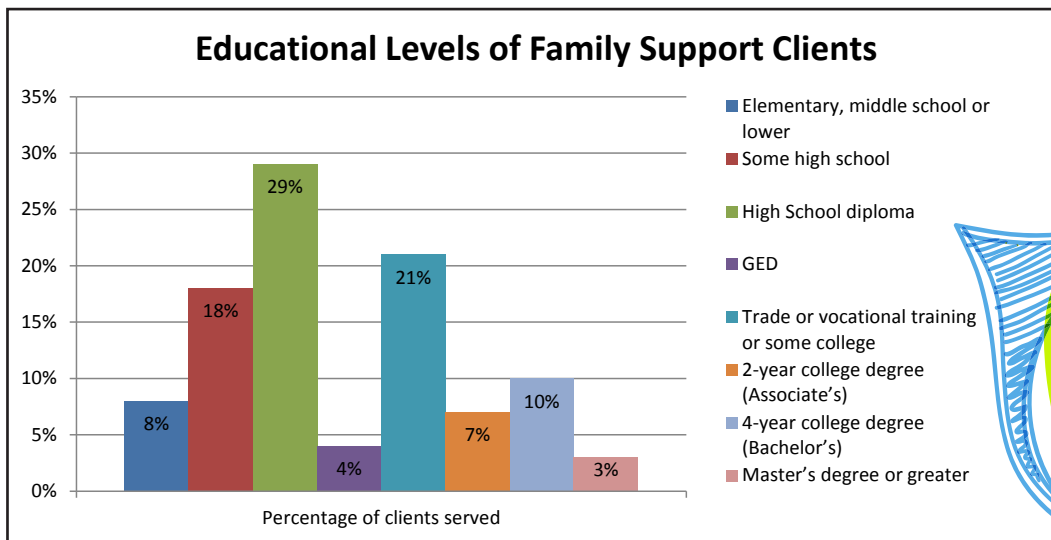
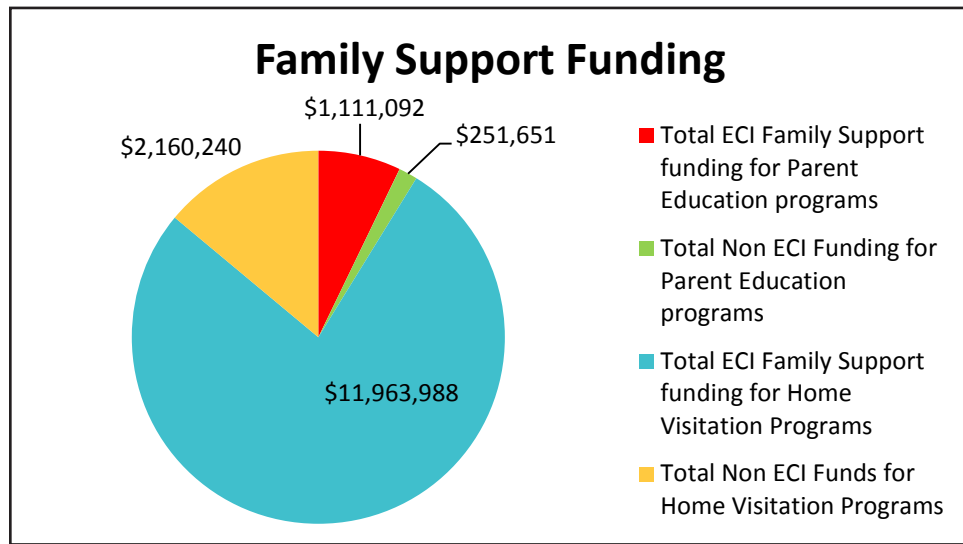
A performance measure *“measures the success of a service, product, or activity for the population served”*. In FY’11, the ECI State Board adopted consistent program measures which are required to be reported by all programs funded with both Early Childhood and School Ready dollars. This information is submitted in the local annual reports submitted to the ECI Office. The data is then compiled and shared from a state perspective in the ECI state annual report.

Note: An Executive Summary for each ECI Area can be found on the ECI website at the following link, http://www.state.ia.us/earlychildhood/EC_resources/annual_reports/index.html; click on *2015 Annual Report*.

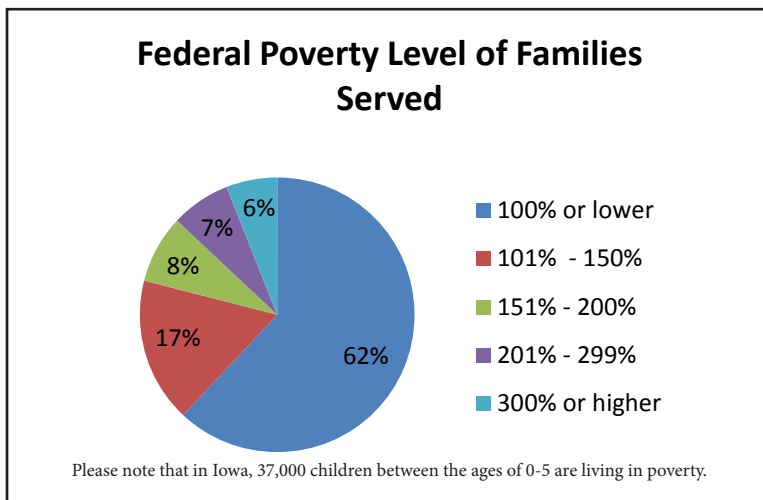


Family Support

Family support programming includes an array of community-based services designed to enable and empower families by building on individual and family capabilities that support and strengthen parenting capabilities and overall family functioning. One strategy for delivering family support services is through home visiting. Another delivery is through parent education which includes a group-based approach to working with families. Programs use varying delivery methods and can have very different goals e.g., preventing child abuse, school readiness, parent involvement, and advocacy.



Of the families served, 26% had some high school education or less.

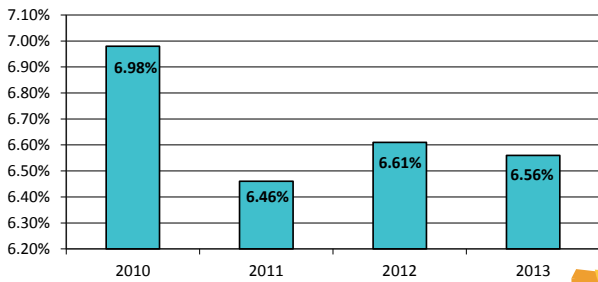


Families, in all the diverse patterns, sizes, creeds, and colors they come in; are the heart and soul of our society. The condition of children's lives largely reflects the well-being of their families. Parents have the greatest impact on their child's development and success, but many need support in learning how to nurture and teach their child. Every day children learn about life and who they are through interactions with and observations of their parents and other primary caregivers.

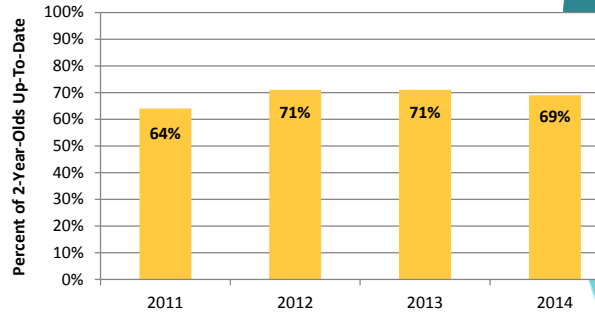
Legislated Result

Healthy Children

Low Birth Weight
(Live Births of less than 2,500 grams)



Immunized Children



LOW BIRTH WEIGHT

Percent of babies born weighing less than 2,500 grams

Source: Iowa Department of Public Health- Vital Statistics

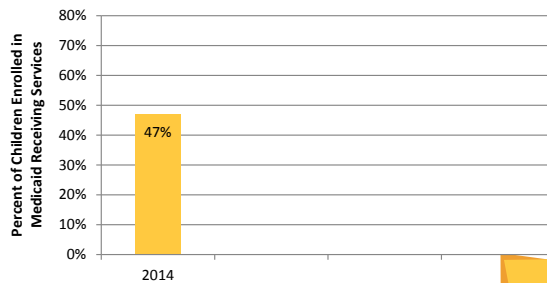
IMMUNIZED CHILDREN

Percent of 2-year-olds with up-to-date immunizations

Source: Iowa Department of Public Health- Bureau of Immunization

State Indicators

Dental Services



DENTAL SERVICES

Medicaid-enrolled children ages 0-5 who receive dental services

Source: Iowa Department of Public Health via CMS 416 Data

State Indicators

Local Strategies and Performance Measures

8 out of the 38 ECI areas supported general health services

\$229,373 total funds reported (ECI: \$212,105; Non-ECI: \$17,268)

11,774 children were served

\$19 average cost per child, based on funds reported

31% of children screened that needed follow up/treatment received those services

General Health

21 out of the 38 ECI areas supported dental screens

\$588,678 total funds reported (ECI: \$359,051; Non-ECI: \$229,627)

16,295 children were served

\$36 average cost per child, based on total funds reported

51% screened that needed dental treatment went to a dentist

86% of the children screened were cavity free

Dental Services

4 out of the 38 ECI areas supported these services

\$45,771 total funds reported (ECI: \$29,933 Non-ECI: \$15,837)

299 children were served (including prenatal children)

\$153 average cost per child, based on total funds reported

83% screened that needed follow up/treatment, received the services

Prenatal/Postnatal Services

Other Factors Impacting this Result:

I-Smile™; Help Me Grow; ACES; *hawk-i* Outreach; 1st Five Healthy Mental Development; EPSDT; Title V Child Health; Period of Purple Crying; Early Hearing Detection and Intervention; Newborn screening; Immunizations; Lead Screening; Food and Nutrition Program

Additional Partners that Assist in Moving Indicators in a Positive Direction:

Local Public Health; WIC Clinics; IDPH; Child Health Specialty Clinics; Local Title V Child Health Agencies; DHS; Early ACCESS

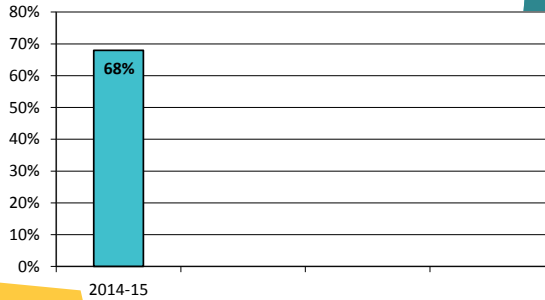
Legislated Result

Children Ready to Succeed in School

Percent of Students Entering Kindergarten Proficient in Beginning Reading Skills Using FAST Assessment



Percent of Students Entering Kindergarten Who Have No Obvious Dental Problems



EARLY LITERACY SKILLS

Kindergartners meeting the Fall benchmark for the early literacy universal screening measure requirements of Iowa Code section 279.68

Source: Iowa Department of Education

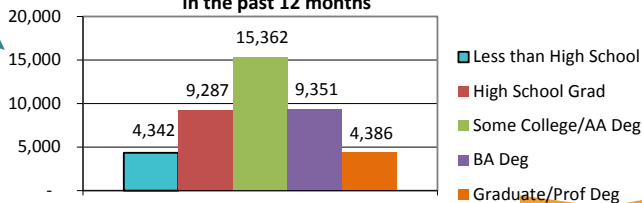
CHILDREN WITH NO DENTAL PROBLEMS

Children entering kindergarten who have no obvious dental problems

Source: Iowa Department of Public Health

State Indicators

Educational Attainment of Women age 15-50 with a birth in the past 12 months



EDUCATIONAL ATTAINMENT OF MOTHERS

Women age 15-50 with a birth in the past 12 months by educational attainment

Source: United States Census Bureau, American Community Survey (ACS) 5-Year Estimates

State Indicators

Additional Partners that Assist in Moving Indicators in a Positive Direction:

Iowa AEYC; Head Start; DE; United Way; IPTV; Academy of Pediatricians; community-based early education providers; DHS Wraparound funds; Early ACCESS; AEA; ISU

Other Factors Impacting this Result:

Every Child Reads; Statewide Voluntary Preschool Program; Shared Visions; Raising Readers Learning Centers; Reach Out and Read; Childcare Alliance Response Team (CART); childcare/preschool wraparound programs; Parents As Teachers; ECI preschool scholarships; Positive Behavior & Intervention Supports; Early Learning Standards

Local Strategies and Performance Measures

Scholarship Coordination

26 out of the 38 ECI areas supported these services

\$310,617 total funds reported
(ECI: \$310,372; Non-ECI: \$245)

79% of children applying for scholarships received it

Reasons a child did receive a scholarship: over income; inadequate funding available; eligible for another program; age ineligible; no longer need; moved out of the specific ECI area

Tuition Assistance

36 out of the 38 ECI areas supported this service

\$7,619,778 total funds reported
(ECI: \$2,908,237; Non-ECI: \$4,711,541)

3,449 Children received tuition assistance/scholarships

\$2,209 average cost per child, based on total funds reported

85% of children demonstrated age appropriate skills

Early Care and Education Supportive Services

21 out of the 38 ECI areas supported these services

\$3,470,365 total funds reported
(ECI: \$2,096,385; Non-ECI: \$1,373,980)

1,980 children were served

\$1,752 average cost per child, based on total funds reported

88% of children served demonstrated age appropriate skills

18 out of the 38 ECI areas supported transportation services

\$343,607 total funds reported
(ECI: \$286,028; Non-ECI: \$57,579)

677 children were provided transportation services

\$507 average cost per child, based on total funds reported

88% of the days preschool was offered that children were able to attend because of this service

Literacy Programs

4 out of the 38 ECI areas supported stand alone literacy programs

\$41,351 total funds reported
(ECI: \$33,151; Non-ECI: \$8,200)

1,150 children were served

\$5 average cost per child, based on funds reported

95% of parents report an increase in reading to their child each day

97% of parents report an increase of talking with their child about new words in stories

Transportation

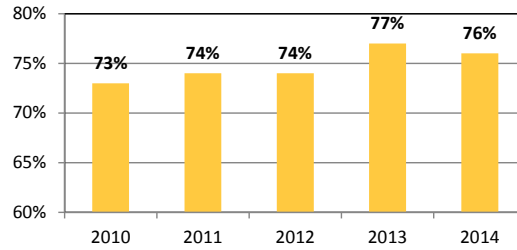
Legislated Result

Secure & Nurturing Early Learning Environments

Availability of Child Care



Percent of Households with Children under Age 6 and All Parents in the Workforce



AVAILABILITY OF CHILD CARE

Number of licensed and registered child care slots

Source: Iowa Department of Human Services

WORKING PARENTS

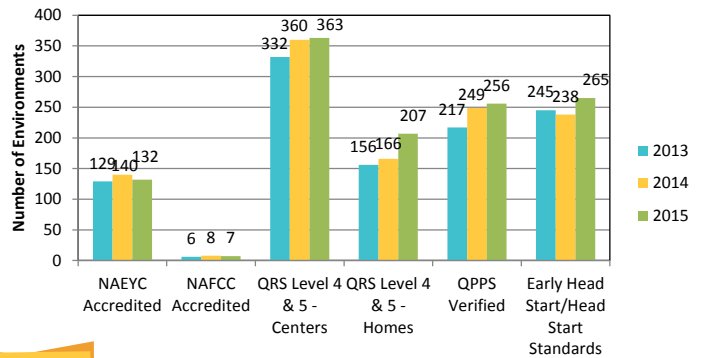
Percent of households with children under age 6 and all parents in the workforce

Source: American Community Survey

State Indicators

In October of 2014, the US Congress passed reauthorization of the Child Care Development Block Grant. This legislation increases state requirements in supporting low-income families who rely on child care assistance to access child care. These requirements move the child care system to be more child focused, family friendly and fair to child care providers. There are a number of requirements the Iowa Department of Human Services (DHS), as the lead agency, will need to implement. The DHS reached out to ECI, through Component Groups and Committees, to provide input and suggestion on how to design the needed changes in child care. The ECI Stakeholders Alliance is very supportive of the changes and will advocate for the implementation.

Quality Early Learning Environments



State Indicators

QUALITY EARLY LEARNING ENVIRONMENTS

NAEYC (National Association for the Education of Young Children) or NAFCC (National Association of Family Child Care) accredited and/or meet Head Start program performance standards, and/or verified QPPS sites, and/or have achieved QRS level 4-5.

Source: Early Childhood Iowa

Local Strategies and Performance Measures

Child Care Nurse Consultants

31 out of the 38 ECI areas supported this service to assist early learning environments (preschools, child care centers, home child care)

\$1,243,524 total funds reported (ECI: \$1,172,320; Non-ECI: \$71,204)

84% of children with special needs had a health care plan

89% of participants improved health and safety in their early learning environments

4 out of the 38 ECI areas supported crisis care services

\$278,894 total funds reported (ECI: \$254,894; Non-ECI: \$24,000)

425 children were served

\$656 average cost per child, based on total funds reported

100% of parents reported they were connected to new support

Crisis Care

Quality Improvement

31 out of the 38 ECI areas supported activities to improve quality through support of the Quality Rating System (QRS)

\$1,551,868 total funds reported (ECI: \$1,295,948; Non-ECI: \$255,921)

39% of the 1,007 early care and education programs that were supported rated at least a level 3 in Iowa's QRS

4 out of the 38 ECI areas supported Wage\$

\$111,305 total funds reported (ECI: \$85,660; Non-ECI: \$25,646)

55 Wage\$ recipients

93% of recipients retained employment in Early Learning Programming

\$2,024 average cost per recipient, based on total funds reported

Wage\$

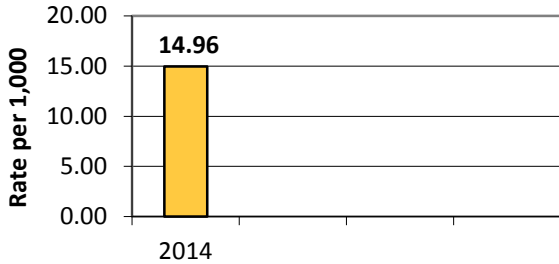
Other Factors Impacting this Result:
Healthy Child Care Iowa; I-Consult

Additional Partners that Assist in Moving Indicators in a Positive Direction:
CCR&R; T.E.A.C.H. Iowa; Head Start; IDPH; ISU Extension

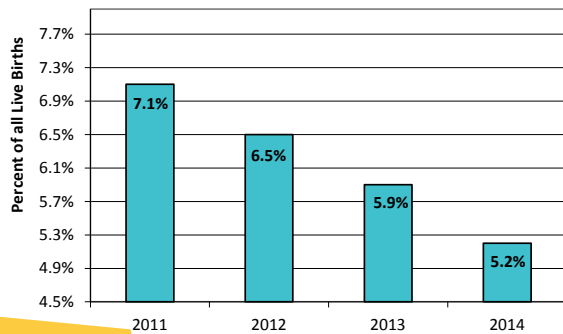
Legislated Result

Safe and Nurturing Families

Incidence of Child Abuse (Children 0 -5 years old)



Teen Births



INCIDENCE OF CHILD ABUSE

Incidence of confirmed child abuse for children 5 years old and under

Source: Iowa Department of Human Services

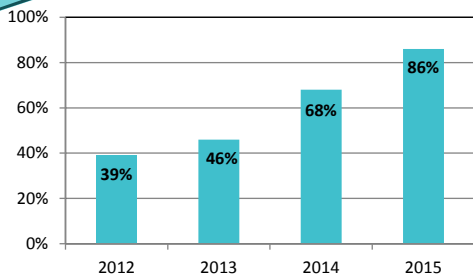
TEEN BIRTHS

Percent of all births to mothers under age 20

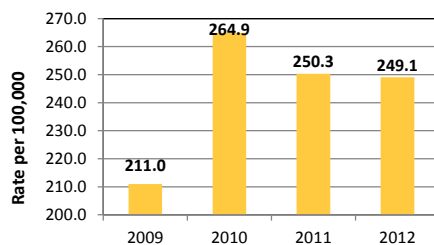
Source: Iowa Department of Public Health

State Indicators

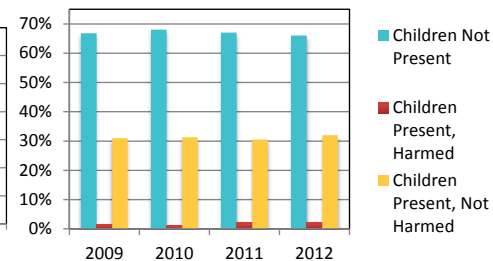
Percent of Accredited Family Support Programs in Iowa



Domestic Violence Rate



Domestic Abuse Incident Characteristics



ACCREDITED FAMILY SUPPORT PROGRAMS IN IOWA

Programs demonstrating adherence to quality standards as determined by an external review

Source: Iowa Department of Public Health

DOMESTIC VIOLENCE RATE

Domestic abuse rate and domestic abuse rate where children were present

Source: Iowa Department of Public Safety

State Indicators

Local Strategies and Performance Measures

2 out of the 38 ECI areas supported resource libraries

\$2,000 total funds reported (ECI: \$2,000; Non-ECI: \$0)

100% of participants increased their knowledge of early childhood growth and development

Resource Libraries

Family Support

38 out of the 38 ECI areas supported family support services

\$20,645,981 total funds reported (ECI: \$13,944,634; Non-ECI: \$6,701,347)

58% of the families have a primary caregiver with a high school diploma or less education

42% of the families served are married

28% of the primary caregivers are non-Caucasian

Iowa Family Support Credential

The Iowa Family Support Credentialing program is a quality improvement framework for family support programs. Technical assistance is provided to enrolled programs to improve practice and to demonstrate adherence to the Iowa Family Support Standards.

Programs complete a self-evaluation with the assistance of their technical assistance mentor to evaluate their adherence to the standards. The results of the self-evaluation formulate the quality improvement plan. A peer review is scheduled when the program determines that they are in adherence in both policy and practice to all of the 139 standards. The peer review team carefully reviews all assessment materials, interviews key stakeholders, observes activities, and reviews family files to determine if the program is in adherence to the standards. A certificate of achievement and recognition is awarded to the program by the state once a program is found to be in complete adherence to the Iowa Family Support Standards.

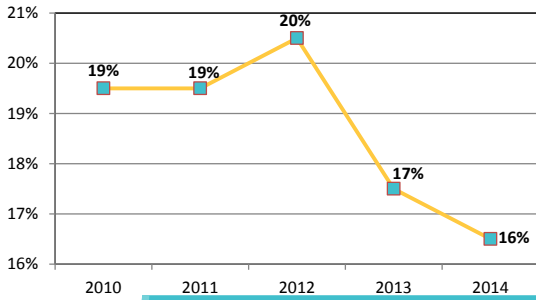
Evidence-based/Promising Practice Priority: In order to implement the legislative intent stated in sections 135.106 and 256I.9, that priority for home visitation program funding be given to programs using evidenced-based or promising models for home visitation, the legislation states that by FY '16, 90 percent of state funds expended for home visiting programs are for evidence-based or promising program models. As of FY '15, Iowa is at 85.77% towards meeting this requirement.

There are now a total of 86 programs that have received the credential either through the standard method (70) or alternate method (16). During the year, 47 programs received technical assistance to move forward with meeting the criteria. Currently 94% of Iowa Counties have at least one program participating in the credential process.

Legislated Result

Safe and Supportive Communities

Percent of Children under age 6 in Poverty

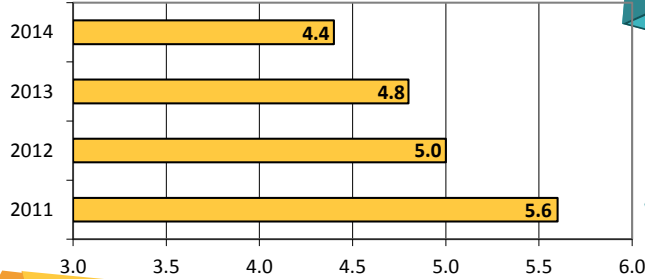


CHILDREN IN POVERTY

Percent of children under six years of age living in poverty

Source: Kids Count Data Center

Unemployment Rate



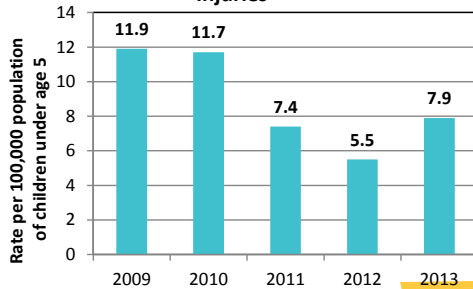
UNEMPLOYMENT RATE

The percent of unemployed persons

Source: Iowa Workforce

State Indicators

Child Deaths due to Unintentional Injuries

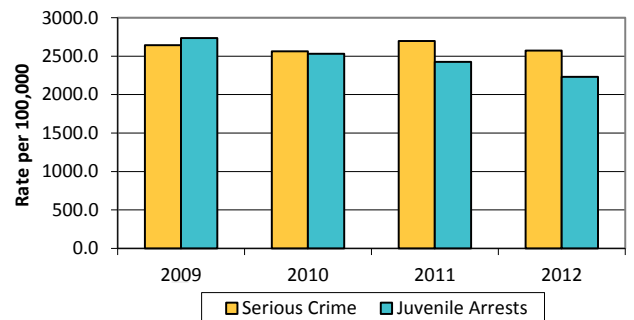


CHILD DEATHS DUE TO UNINTENDED INJURIES

The number of child deaths due to unintentional injuries/estimated midyear Iowa population per 100,000 population of children under age 5 years

Source: Iowa Department of Public Health-Vital Statistics

Serious Crime/Juvenile Arrests



SERIOUS CRIME/JUVENILE ARRESTS

The rate of serious crime per 100,000 population

Total arrests per 100,000 estimated juvenile population (children 18 years old and under)

Source: Iowa Department of Public Safety

State Indicators

Local Strategies and Performance Measures

Coordinated Intake

7 out of the 38 ECI areas supported a Coordinated Intake project

\$114,223 total funds reported (ECI: \$86,083; Non-ECI: \$28,140)

52% of families that received referrals enrolled in the program or service

Car Seat Safety Checks

2 out of the 38 ECI areas supported car seat safety checks

\$2,210 total funds reported (ECI: \$2,210; Non-ECI: \$0)

30 children were served

\$73.67 average cost per child, based on the total funds reported

40% of the car seats were properly installed prior to the safety checks, as reported by the car seat safety technician

Public Awareness Activities

6 out of the 38 ECI areas supported public awareness activities in their areas

\$79,170 total funds reported (ECI: \$78,670; Non-ECI: \$500)

Other Factors Impacting this Result:

Promise Jobs; Community-Based Child Abuse Prevention Funds; Iowa Child Abuse Prevention Program

Additional Partners that Assist in Moving Indicators in a Positive Direction:

Community Partnerships for Protecting Children; DHS; IDPH; Prevent Child Abuse Iowa

Professional Development

Professional Development - Conferences

11 out of the 38 ECI areas supported PD Conferences

\$57,710 total funds reported (ECI: \$57,710; Non-ECI: \$0)

18 conferences were supported by ECI areas

Professional Development - Trainings

33 out of the 38 ECI areas supported professional development trainings

\$605,910 total funds reported (ECI: \$581,958; Non-ECI: \$23,952)

591 professional development trainings were supported.

Professional Development - Credit Bearing

5 out of the 38 ECI areas supported credit bearing professional development activities

\$135,664 total funds reported (ECI: \$134,639; Non-ECI: \$1,005)

54 individuals participated in credit bearing professional development opportunities

Professional Development- Consulting, Mentor, Coaching

28 out of the 38 ECI areas supported professional development consulting, mentoring, and/or coaching.

\$2,682,134 total funds reported (ECI: \$2,484,938; Non-ECI: \$197,196)

216 Programs participating in consulting, mentoring, and/or coaching--this resulted in 9,233 visits/contacts

T.E.A.C.H. Early Childhood® IOWA is an affordable, comprehensive statewide scholarship program that provides the early care and education workforce with an opportunity to attain college coursework, credentials, and degrees in early childhood education without going into debt. T.E.A.C.H. scholarships address key issues in child care of under-education, poor compensation, and high turnover while supporting high quality early learning environments for Iowa's youngest citizens.



Funding for T.E.A.C.H. Early Childhood® IOWA comes in part from the Iowa Department of Human Services through federal funding from the Child Care Development Fund; Iowa Department of Management

through Early Childhood Iowa Professional Development; United Way of Central Iowa, Women's Leadership Connection; the Iowa Department of Public Health through MIECHV funds; Polk County Early Childhood Iowa Area; and the child care programs who co-sponsor a T.E.A.C.H. scholarship recipient. T.E.A.C.H. Early Childhood® IOWA is a successful strategy supporting the result areas of Early Childhood Iowa.

Child Care WAGES® IOWA provides education-based financial supplements to early care and education providers to incentivize retention within their child care program as well as continued college education. This program aims to increase retention, education, and compensation for the early childhood workforce. During FY '15, WAGES served 10 counties in Iowa.



Local System Development- ECI Area Boards:

- Administer funding to invest in early childhood programming to support young children and their families
- Build community commitment to reach the ECI Legislated Results
- Develop a community plan that is adopted by various early childhood partners in the community

**ECI
Admin**

Local Boards

- Administrative Staff - \$2,069,069
- Total ECIA Board Expenses (non-staff) - \$254,526
- Board Liability Insurance - \$64,070
- Fiscal Agent Fees - \$242,622
- Audit Expenses - \$102,950

**Total:
\$2,733,237**

State System Development (ECI State Office and State Technical Assistance Team):

- Support and coordinate with the ECI State Board to move the early care, health and education systems forward.
- Support and coordinate the ECI Stakeholders Alliance
- Oversee the development of a high quality early childhood system
- Implementation of the ECI initiative
- Provide leadership and facilitation, communication and coordination of initiative activities and funding for the ECI Area boards

State Office

- 2 FTEs (salary and benefits) + 7 months of previous staff person and a portion of time for clerical support - \$326,485
- Office Expense: (includes individual office space rental, equipment, phone lines, conference phone lines, supplies, computers and IT services, printing, LOE items for model areas, etc.) - \$22,000
- Travel Expenses – Board Members - \$8,050
- Travel Expenses – for ECI Office and state car - \$7,200

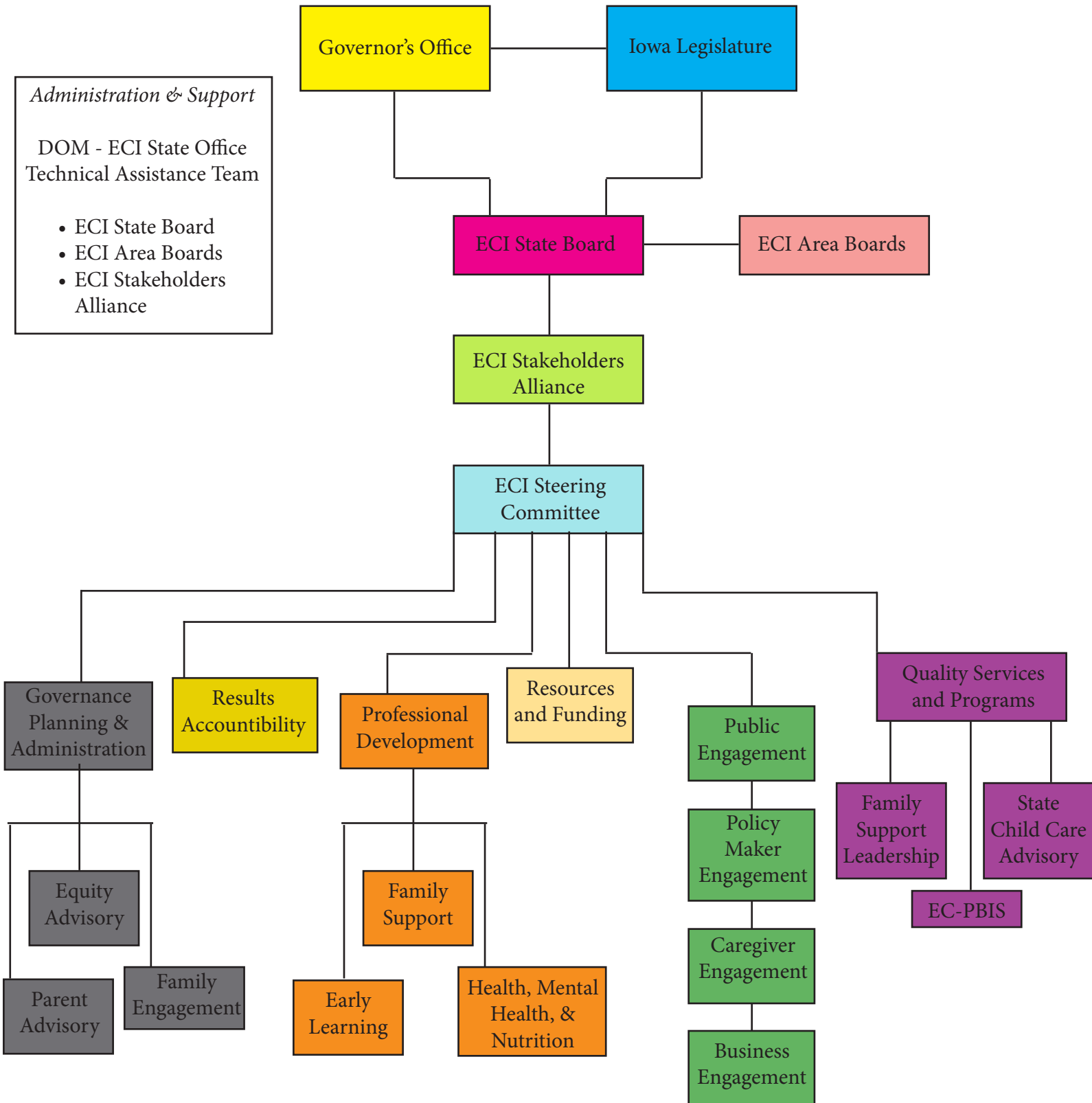
**StateOffice
Total: \$363,735**

State TA Team

In addition to the State Office:

- DHS utilizes \$50,000 (.5 FTE) of the Early Childhood funding
- IDPH contributes a .25 FTE to the ECI TA Team
- DE contributes a .5 FTE to the ECI TA Team

ECI System



Addendum

The following supportive documents can be accessed by visiting the FY15 Annual Report link on the official ECI website, http://www.earlychildhoodiowa.org/EC_resources/annual_reports/index.html:

Early Childhood Iowa Indicator Trend Data

ECI Area Overview

ECI State Board Membership

ECI Timeline through 2015

ECI History of the Early Childhood Fund

ECI History of the School Ready Fund

ECI Funding Summary

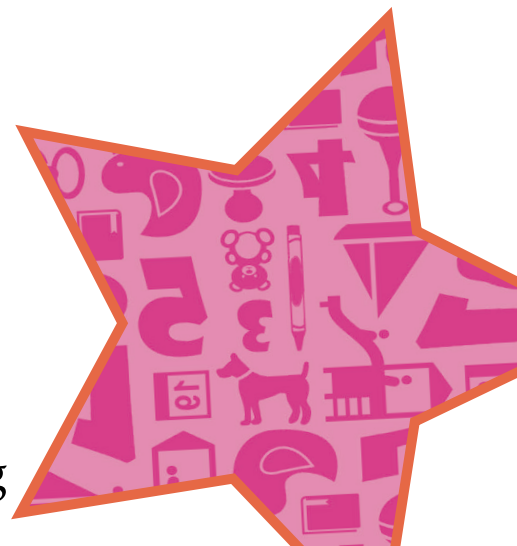
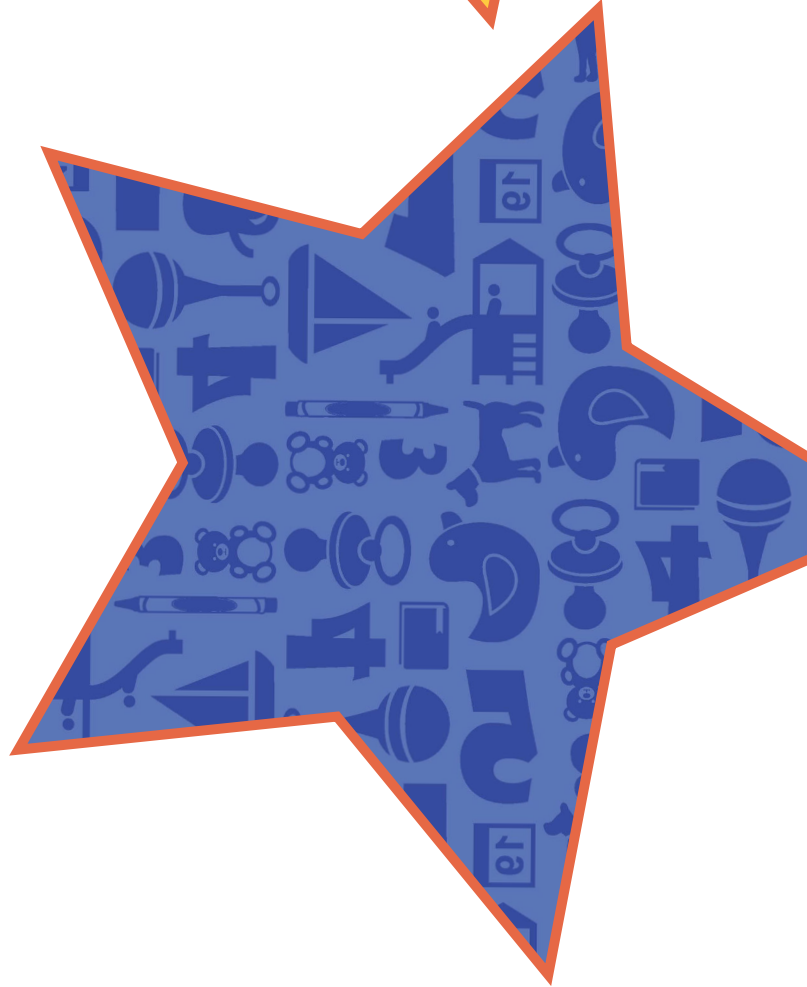
EC-PBIS Annual Report

FY '15 Family Support Data

State Child Care Advisory Committee Update

ECI Professional Development Update





www.earlychildhoodiowa.org