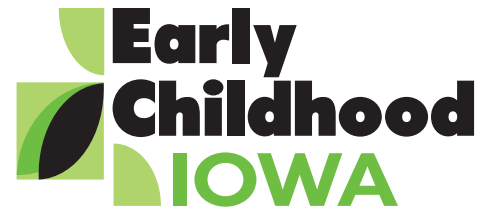
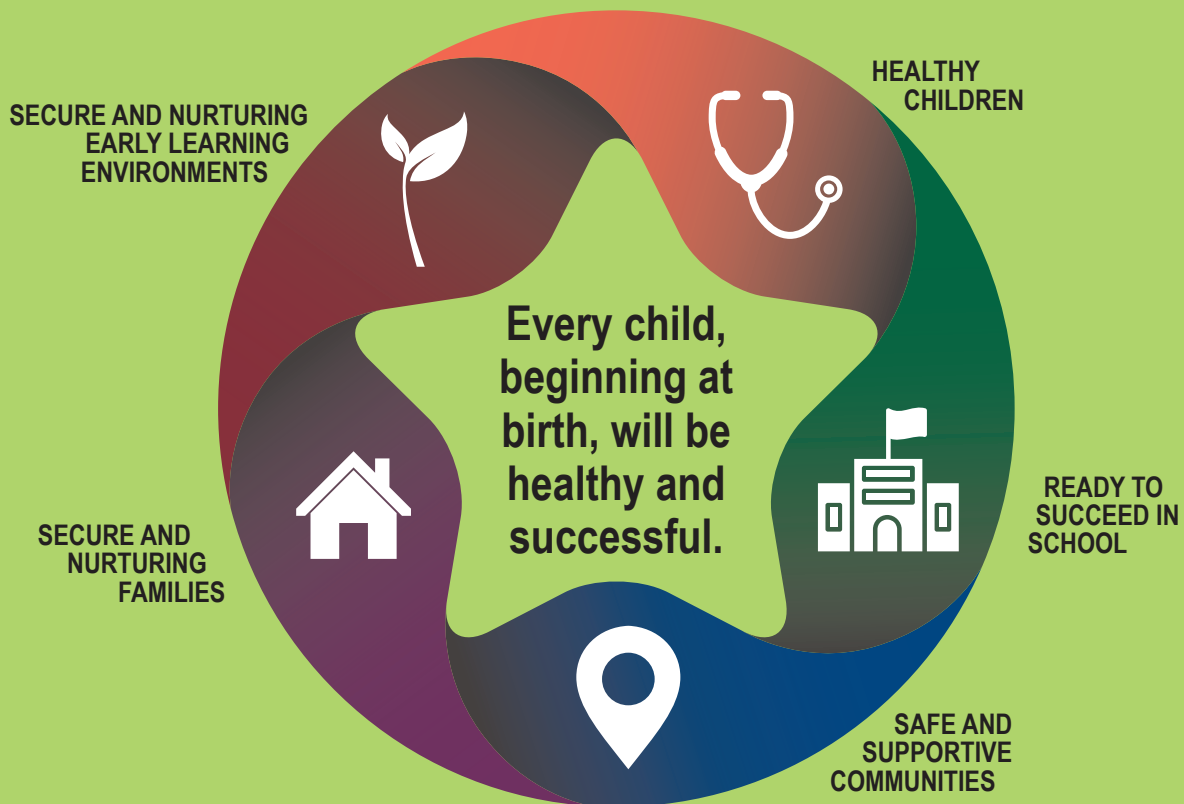


2019 ANNUAL REPORT HIGHLIGHTS



Full report to be found at www.earlychildhood.iowa.gov

OUR VISION FOR IOWA'S CHILDREN



Dear Governor Reynolds, members of the Iowa General Assembly and the general public:

It is my pleasure to share the Early Childhood Iowa 2019 Annual Report. Through many collaborative partnerships, Iowa is developing a strong early childhood system. This report highlights some successes achieved during this 2019 fiscal year and overall. The Early Childhood Iowa (ECI) State Board is inspired by the dedication reflected.

A specific item to mention is Iowa's receipt of the federal planning grant, Preschool Development Grant Birth to Five, (PDG-B-5) that began in the 2019 calendar year. With its supports, Iowa is continuing to expand its Integrated Data System. Information is available through the 2019 Needs Assessment developed and then adopted in September. Iowa has also adopted the 'We Are ECI' Strategic Plan that will help guide our future work.

In this highlight report, we provide a data highlight from family support programs that receive ECI funding. These programs provide an invaluable service to assist vulnerable families primarily with children 0-3 through home visiting or group-based parent education to help parents be their children's first and best teacher. Full report and additional data is found on the ECI website at www.earlychildhood.iowa.gov.

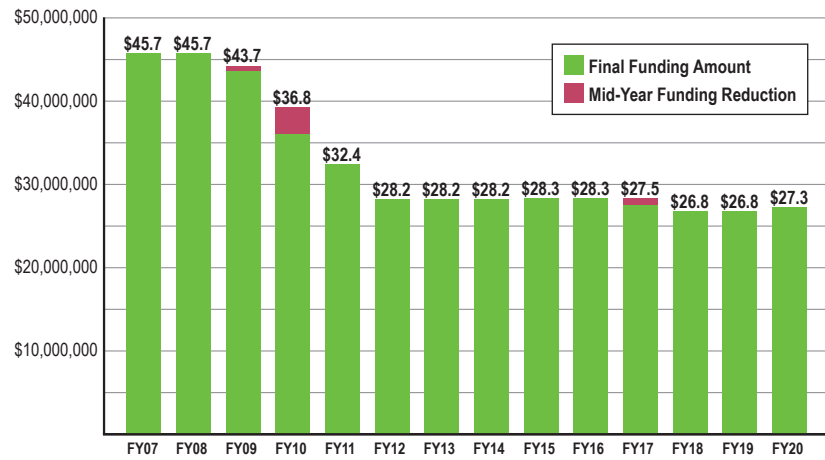
Respectfully,

Dave Arens, Board Chair

WHO IS ECI?

Early Childhood Iowa serves as a catalyst for supporting Iowa's early care, health and education system. Through our vision and result areas, we strive to ensure Iowa's young children are healthy, ready to succeed in school, grow up in safe and supportive communities with secure and nurturing families and have access to secure and nurturing early learning environments.

ECI FUNDING HISTORY



SFY09:

1.5% mid-year across the board reduction in School Ready funding (decrease in funding of \$524,135.60)

SFY10:

\$500,000 mid-year reduction in Early Childhood funding; 10% mid-year reduction in School Ready funding (decrease in funding of \$3,015,369)

SFY11:

At the close of the 2010 legislative session, SF2366 signed into law making appropriations to backfill SFY'10 School Ready Preschool funding

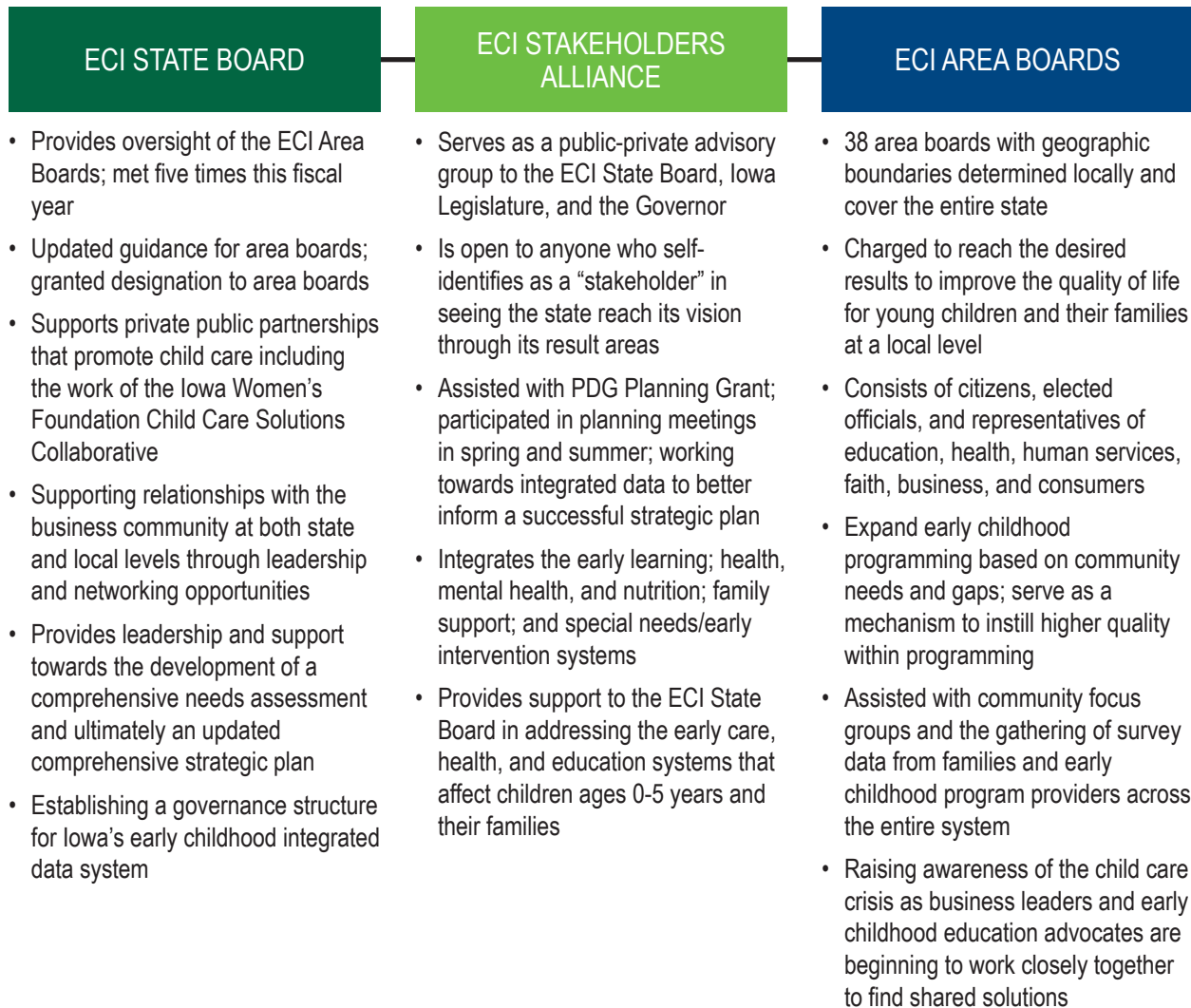
SFY15:

Early Childhood funds - DHS reduced the amount withheld from the appropriation for the TA team member

SFY17:

3.75% mid-year across the board reduction in School Ready funding (decrease in funding of \$824,994)

EARLY CHILDHOOD IOWA'S LEADERSHIP INVOLVES MANY LEVELS



FAMILY SUPPORT PROGRAMS



ECI area boards bring communities together – parents; child care, human services and health care providers; educators; business people; and the faith community – to identify strengths, needs and gaps in services. In this report, we have selected one service type to highlight the data collected.

Family support programs include but are not limited to home visitation and parent education. Each ECI area board partners and financially supports at least one family support program in their area. In FY 2019, approximately 140 programs received support. Many of these programs also receive support from HOPES (IDPH appropriation); Shared Visions family support funding (DE allocation); prevention funding from DHS as well as other grants and private funding.

Family support programs adhere to standards of quality working with parents who invest their time to strengthen and nourish their families. Family support workers advocate, assist in enhancing parenting skills, and help caregivers find someone they can depend on. Three key areas of focus are: maternal and child health, school readiness, and strong families. This service type is where ECI makes its biggest impact within the early care, health, and education system. Below is trend data from 2017, 2018 and 2019.

	2017	2018	2019
Funding expended on family support programming	\$14,292,613	\$12,764,064	\$12,296,371
Children 0-5 served	12,059	12,085	11,961
Families served	9,228	9,605	9,389
Home visits	72,698	75,981	73,939
Group based parent education services provided	17,238	17,286	17,200

PARTICIPANTS

Enrolled prenatally	24.3%	30.5%	30.0%
Mothers enrolled were 21 or younger	20.8%	19.3%	18.7%
Of those above that are 17 or younger (very young parents are most at-risk)	4.9%	5.2%	4.9%
Primary caregivers identified as non-white	20.8%	22.2%	24.4%
Primary caregivers have a high school diploma/GED or less education	58.6%	59.1%	59.1%
Primary caregivers with some college up to Graduate level degrees	38.4%	37.2%	35.3%
Primary caregivers were married or partnered	64.9%	63.5%	62.6%
Primary caregivers have educations ranging from some college to a master's degree or higher	38.4%	37.2%	35.3%
Primary caregivers were first time moms	39.2%	40.1%	40.7%
Primary caregivers report a language other than English spoken in their home	22.1%	22.5%	23.5%
Families served had incomes at or below 125%	68.9%	68.6%	67.1%
Families served had incomes above 200% or were unreported	16.6%	17%	18%
Age-eligible children were screened for developmental screening*	61.9%	55.3%	54%
Children screened that needed referred that were not already receiving AEA services that were NOT referred	27.8%	20.5%	17%

*Effective FY '20 the ECI State Board adopted a change to require screening

OUTCOMES

Families that maintained or improved healthy family functioning	93%	93.6%	92.3%
Families that maintained or improved social supports	87.5	88.1%	87.3%
Families that improved concrete supports	72.4%	74.3%	75.3%
Families that improved nurturing and attachment	47.4%	87.9%	89.5%
Families that improved their knowledge of child development and parenting	60.7%	89.6%	90.5%



LOOKING FORWARD

In September 2019, the ECI State Board adopted the 2019 Needs Assessment and 'We Are ECI' Strategic Plan. Below are the goals outlined in the 2019-2022 strategic plan.

IOWA'S STRATEGIC PLAN 2019-2022



GOAL 1

Promote a coordinated infrastructure to advance the early childhood system.

GOAL 2

Build public will for investing in young children and their families.

GOAL 3

Transform the early childhood workforce through formal education, greater professionalism, increased skills and competence, and new approaches to implementing best practices.

GOAL 4

Ensure that young children and families receive the services they need when they need them.

GOAL 5

Improve the quality of early childhood services for young children and their families across early care and education; health, mental health, and nutrition; and family support services.

This publication was made possible by the Preschool Development Grant Birth to Five (Grant Number 90TP0030-01-00) from the Office of Child Care, Administration for Children and Families, U.S. Department of Health and Human Services as part of a grant totaling \$2,190,119 with 0% financed with non-governmental sources. Its contents are solely the responsibility of the authors and do not necessarily represent the official views of the Office of Child Care, the Administration for Children and Families, or the U.S. Department of Health and Human Services.

Questions about this report may be directed to:
Iowa Department of Management
Office of Early Childhood Iowa
State Capitol, Room 13
Des Moines, IA 50319
earlychildhood.iowa.gov | shanell.wagler@iowa.gov