



# Family Support Programming

Annual Report  
July 1, 2021 to June 30, 2022

# About Us

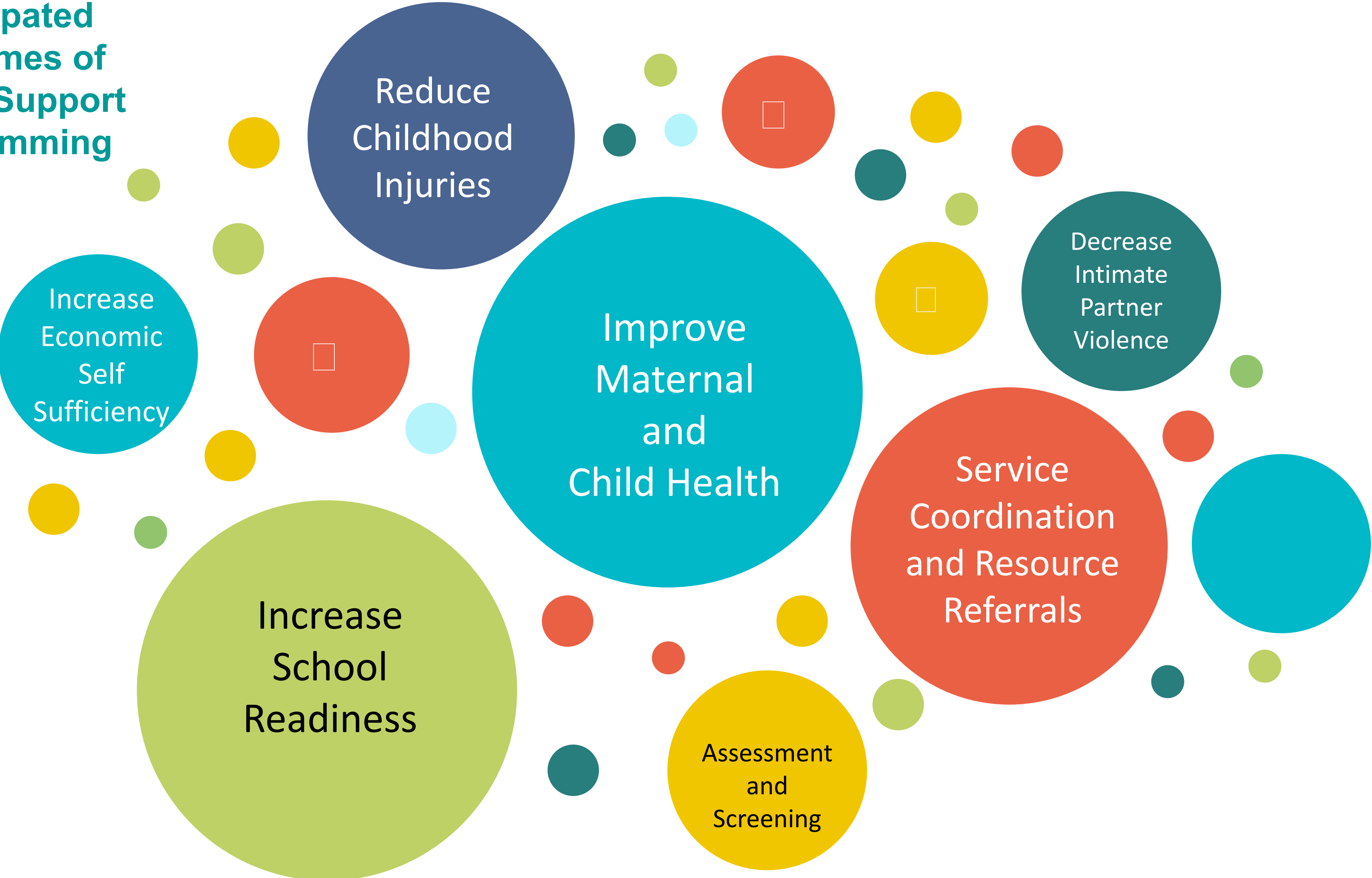
---

**What is Family Support?** includes group-based parent education or home visiting programs that are designed to strengthen protective factors, including parenting skills, increasing parental knowledge of child development, and increasing family functioning and problem solving skills.

**Models:** Healthy Families America, Home-based Early Head Start, Family Connects, Nurse Family Partnership, Parents as Teachers and locally developed models

Delivered by **Nationally Credentialed Family Support Professionals**

**Anticipated  
Outcomes of  
Family Support  
Programming**



Reduce  
Childhood  
Injuries

Increase  
Economic  
Self  
Sufficiency

Increase  
School  
Readiness

Improve  
Maternal  
and  
Child Health

Service  
Coordination  
and Resource  
Referrals

Assessment  
and  
Screening

Decrease  
Intimate  
Partner  
Violence



ECI Family Support

- ECI HV EB
- ECI HV PP
- ECI STHV
- ECI Group



October 2022

# Data Source

- DAISEY is a dynamic data system.
- Data reports were pulled between July 20 – August 15 and are saved as the official record.
- Reports were distributed to ECI Area Directors on September 30.
- Changes to the data that occur after the data reports are pulled are not reflected in the official records.



DAISEY

*connecting the first five years to a lifetime of success*



# Who Does ECI Family Support Serve?

63%

## Families with Low Incomes

- Families with incomes at or below 125% of poverty. For a family of three in 2021 that is \$27,450 or \$13.20 per hour/40 hours per week

65%

## Families with Low Education

- Primary Caregivers with a high school diploma or less education

Pregnant Women and Families with children 0 - 5

16%

## Young Parents

Primary Caregivers are 21 years or younger

33%

## English Language Learners

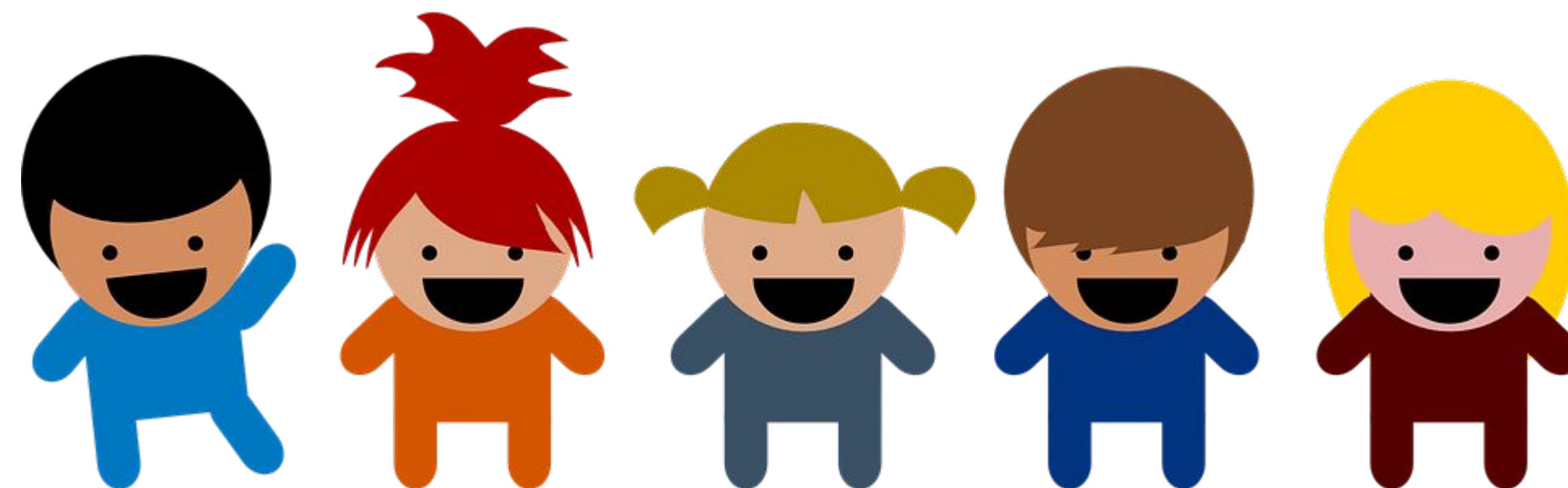
Identified a language, other than English as their home language.

39%

## First Time Moms

### Moms

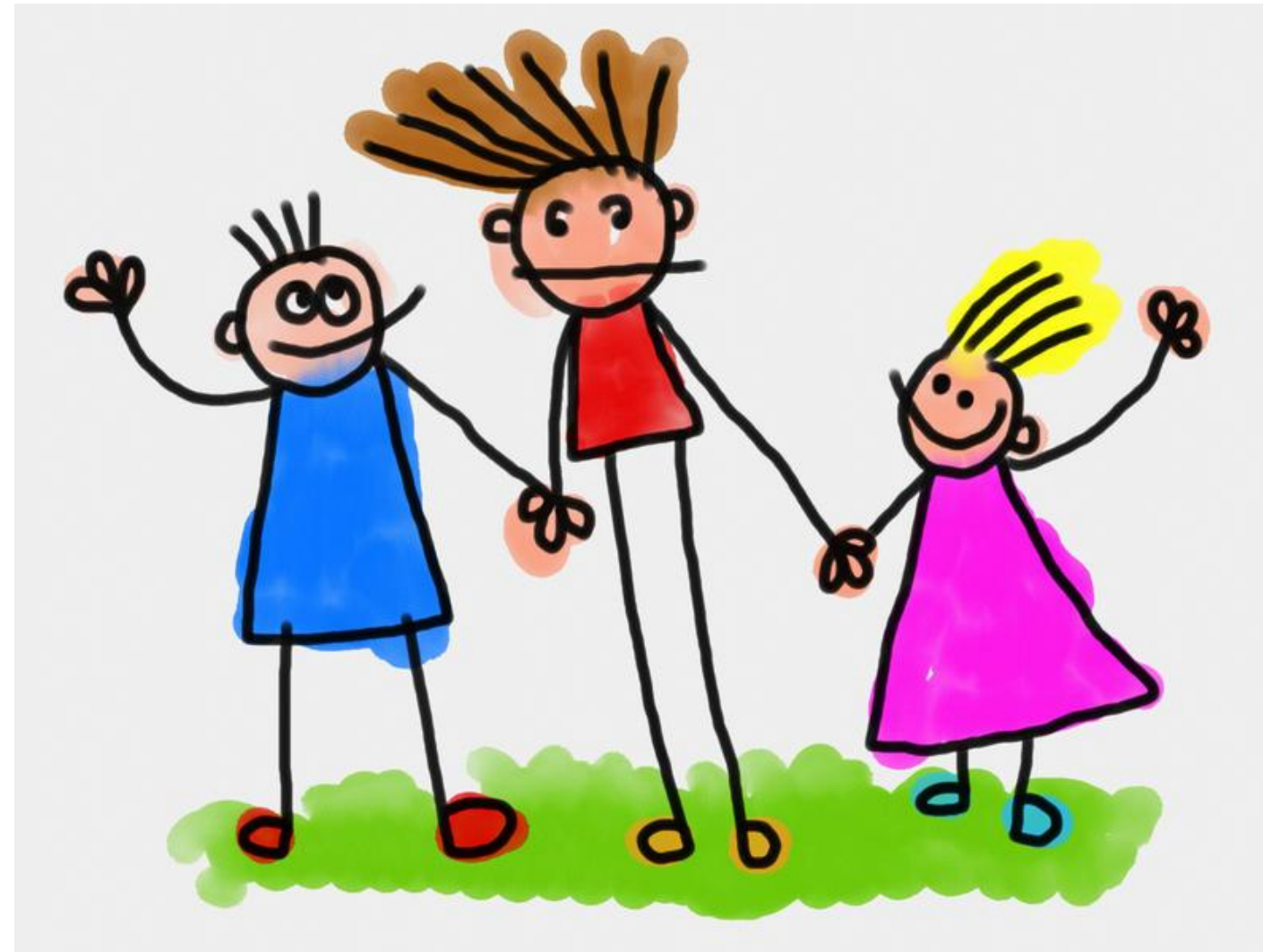
First time parenting children



# What Did ECI Family Support Do?

---

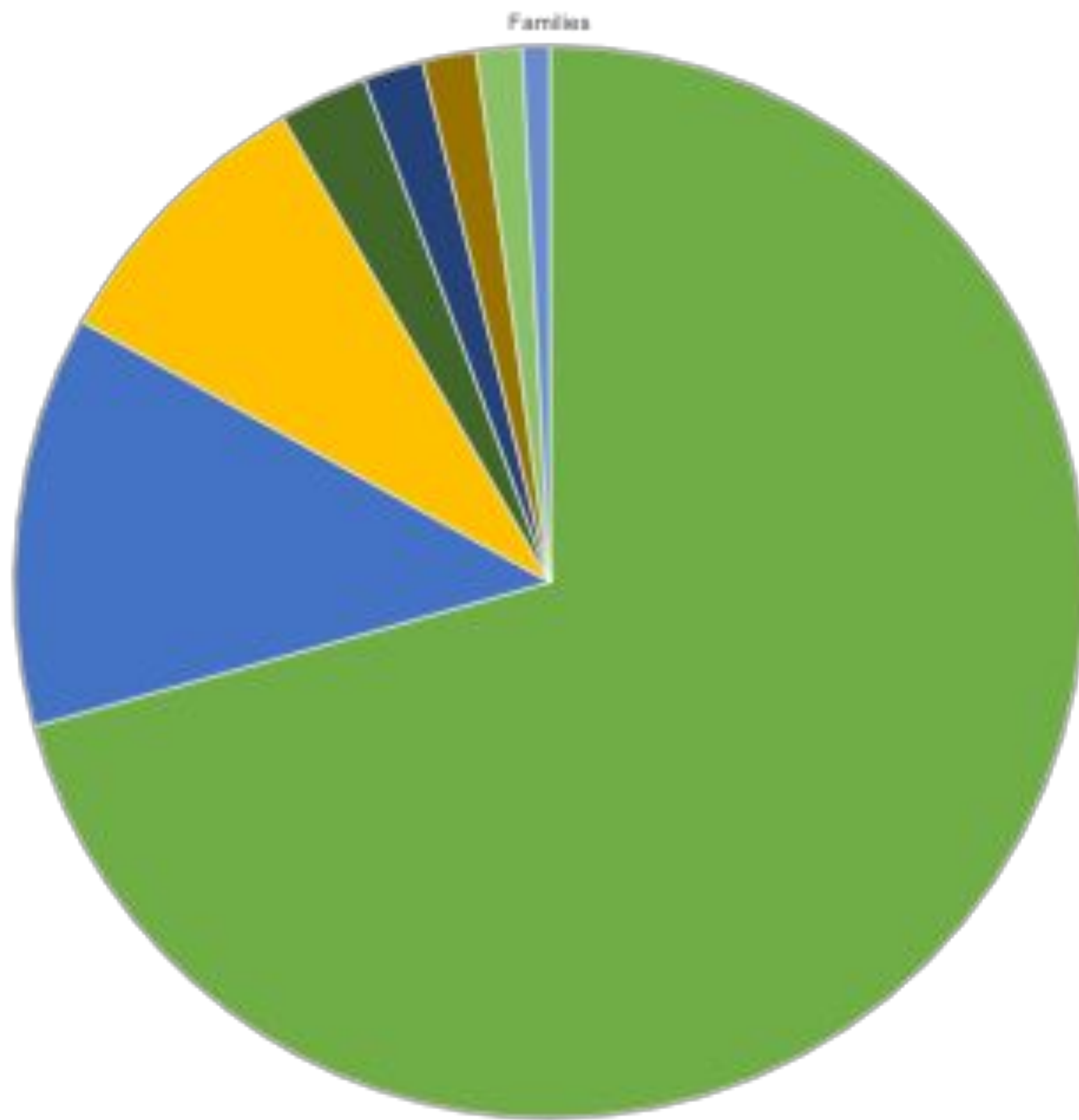
**5,300**  
families served



**6,834**  
children 0 – 5 served

**49,504** home visits provided

# Languages Spoken in the Home



- English
- Spanish
- Other
- Other



# What Difference Did We Make?

---

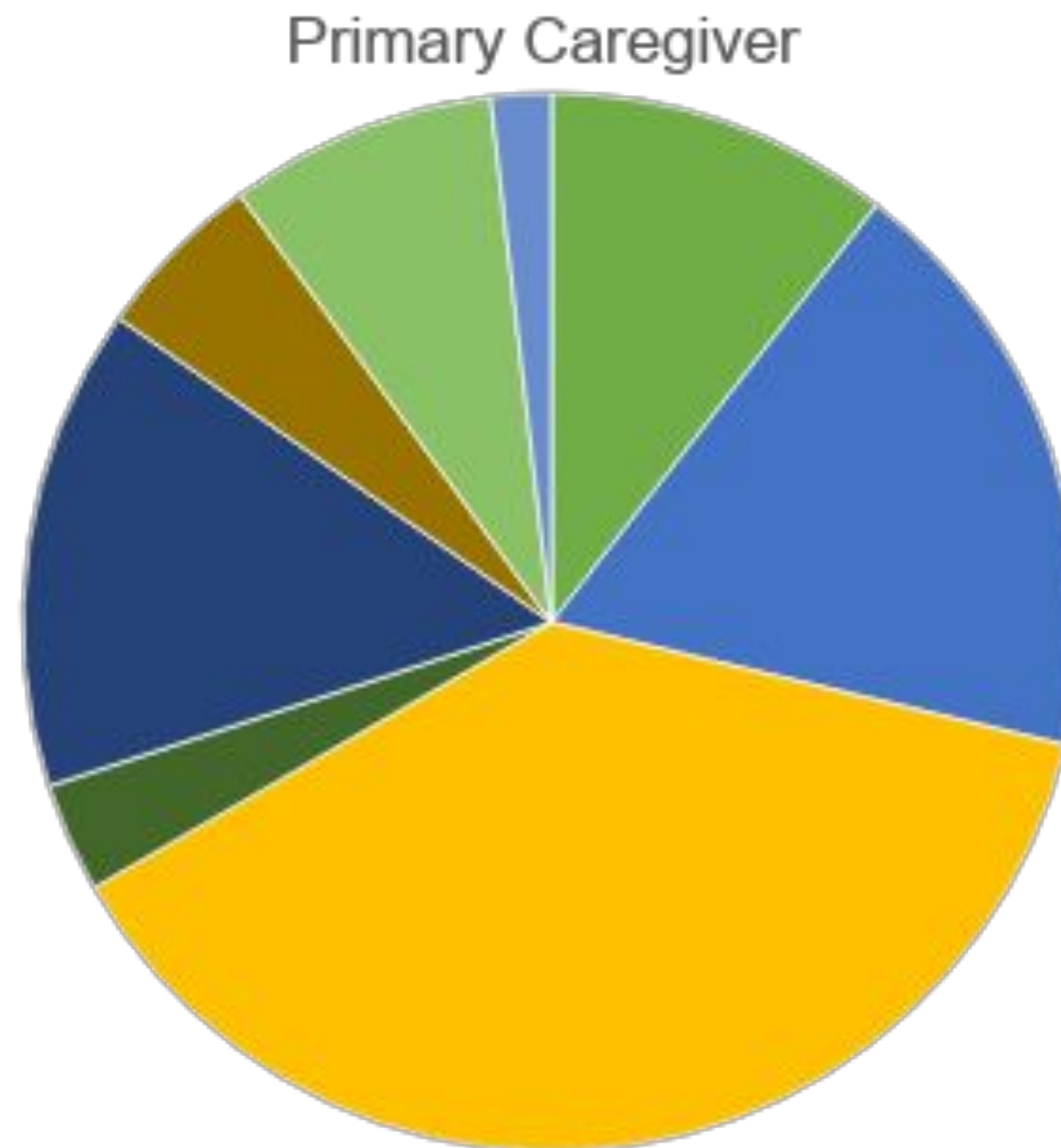
**71%** of children were screened for **developmental delays**.

**92%** of families improved or maintained **healthy functioning, problem-solving and communication**.

**19%** of children screened for **developmental delays** needed referral for early intervention

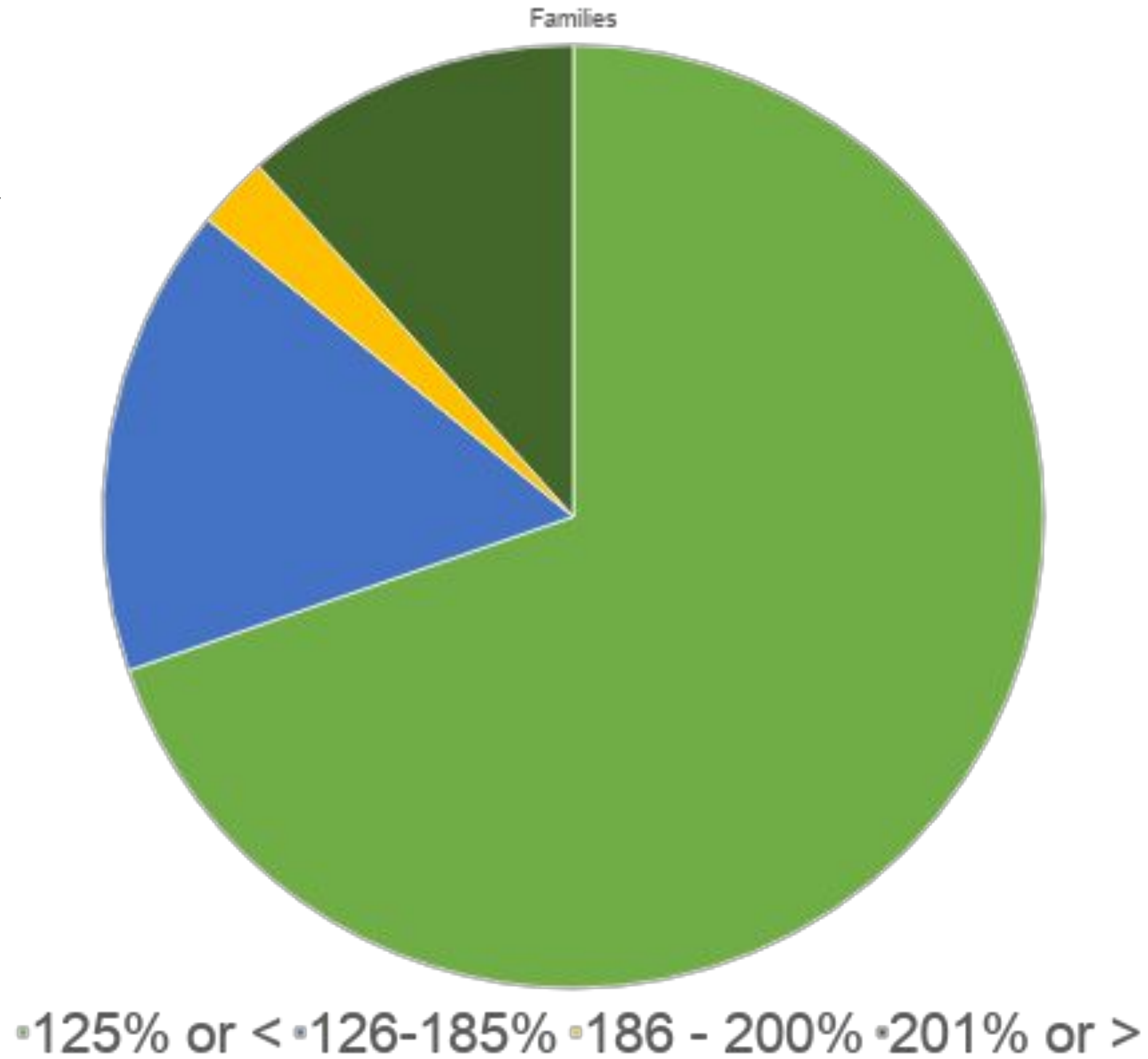
**32%** of mothers screened for **depression** needed referred for additional assistance

Primary  
Caregiver  
Highest Level  
of Education  
Completed



- Middle School, Elementary or less
- Some High School
- GED or High School
- Trade School
- Some College
- Community College
- Bachelor Degree
- Masters Degree or higher

# Federal Poverty Level

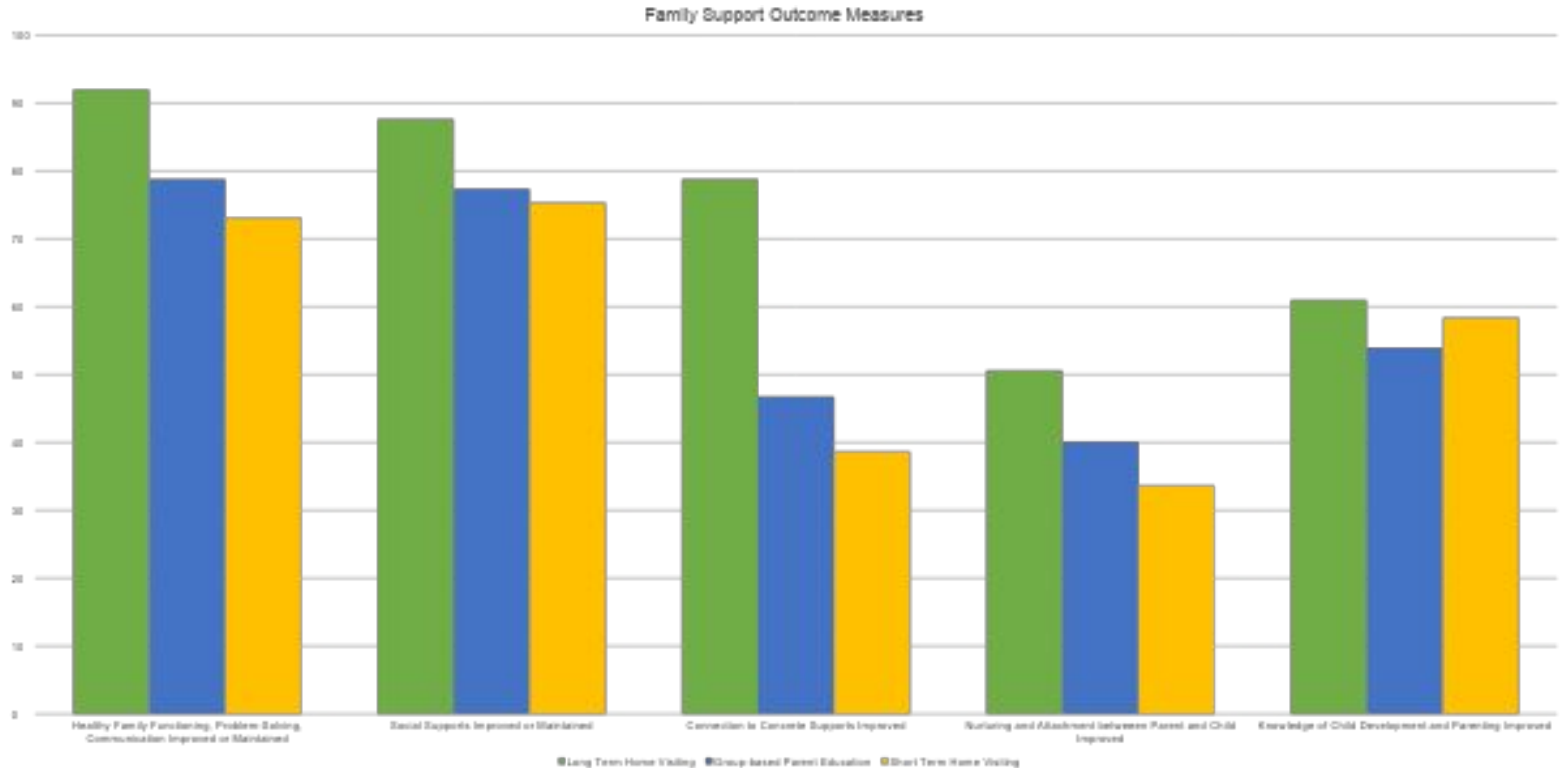


For a Family of 3

125% of FPL is \$28,788  
or \$13.84 hour working  
full time/year around

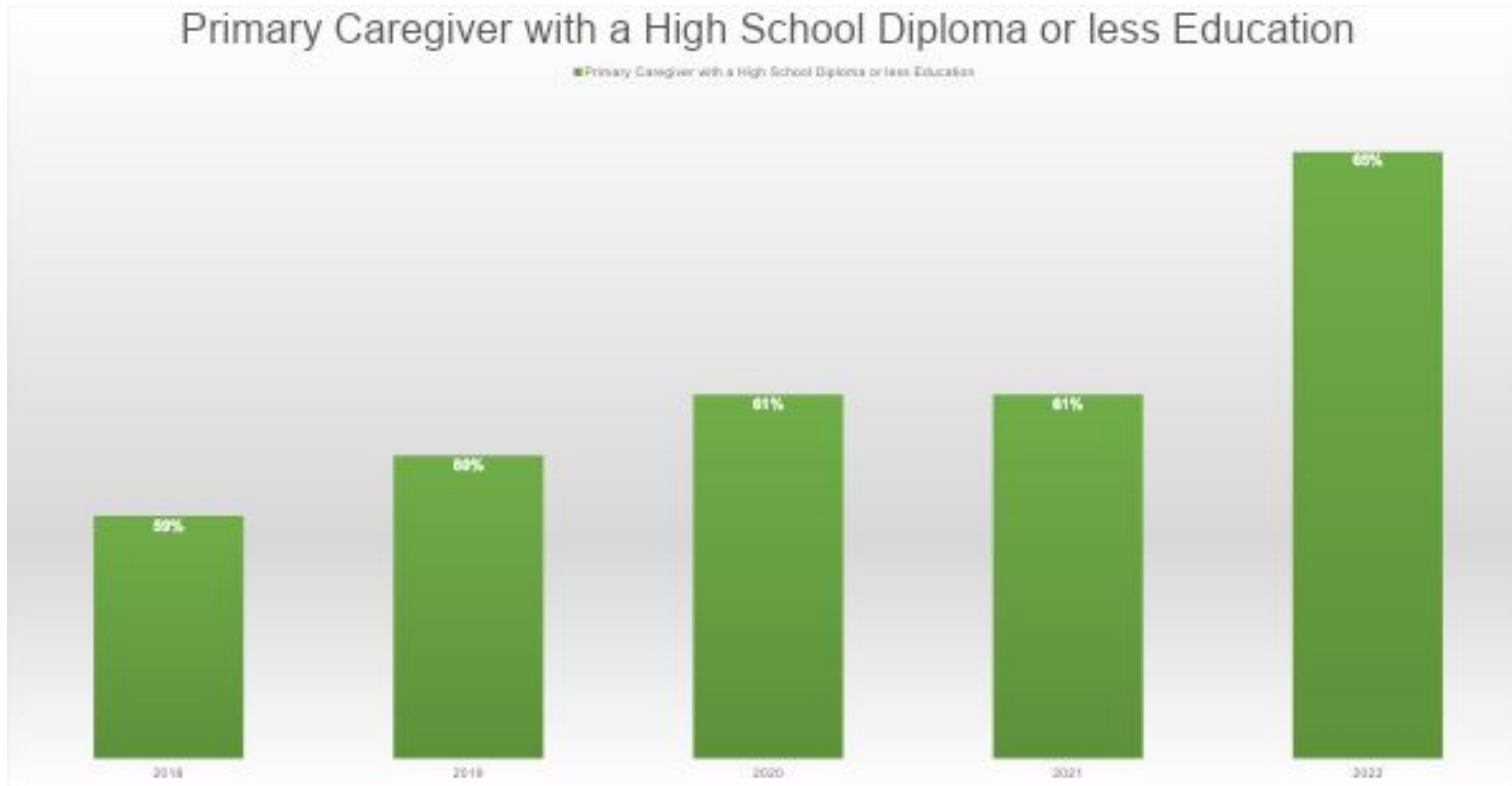
200% of FPL is \$46,060  
or \$22.14 full time/year  
around

# What Outcomes Did We Achieve?



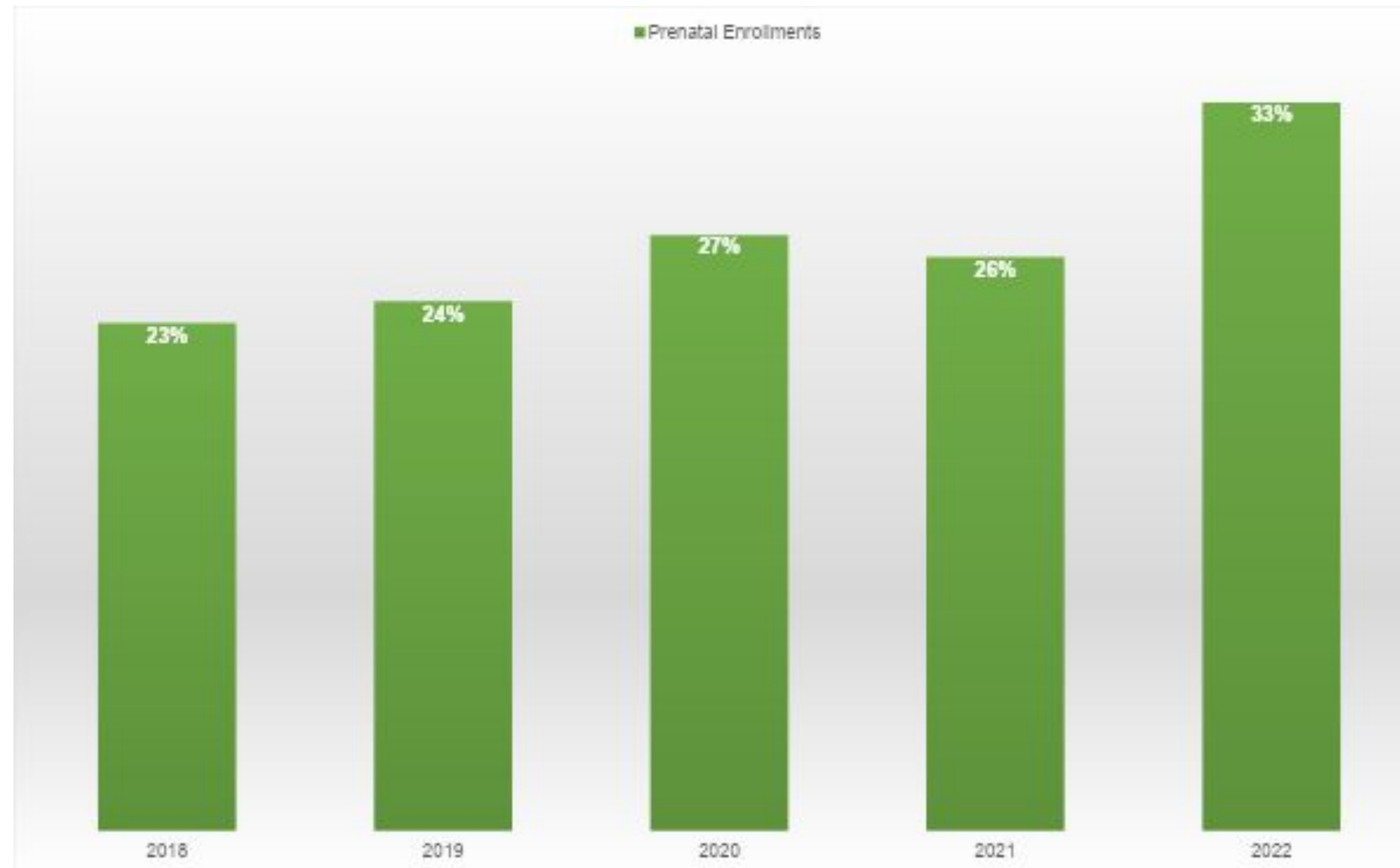


# Five Year Trend Data – Engage Higher Risk Families

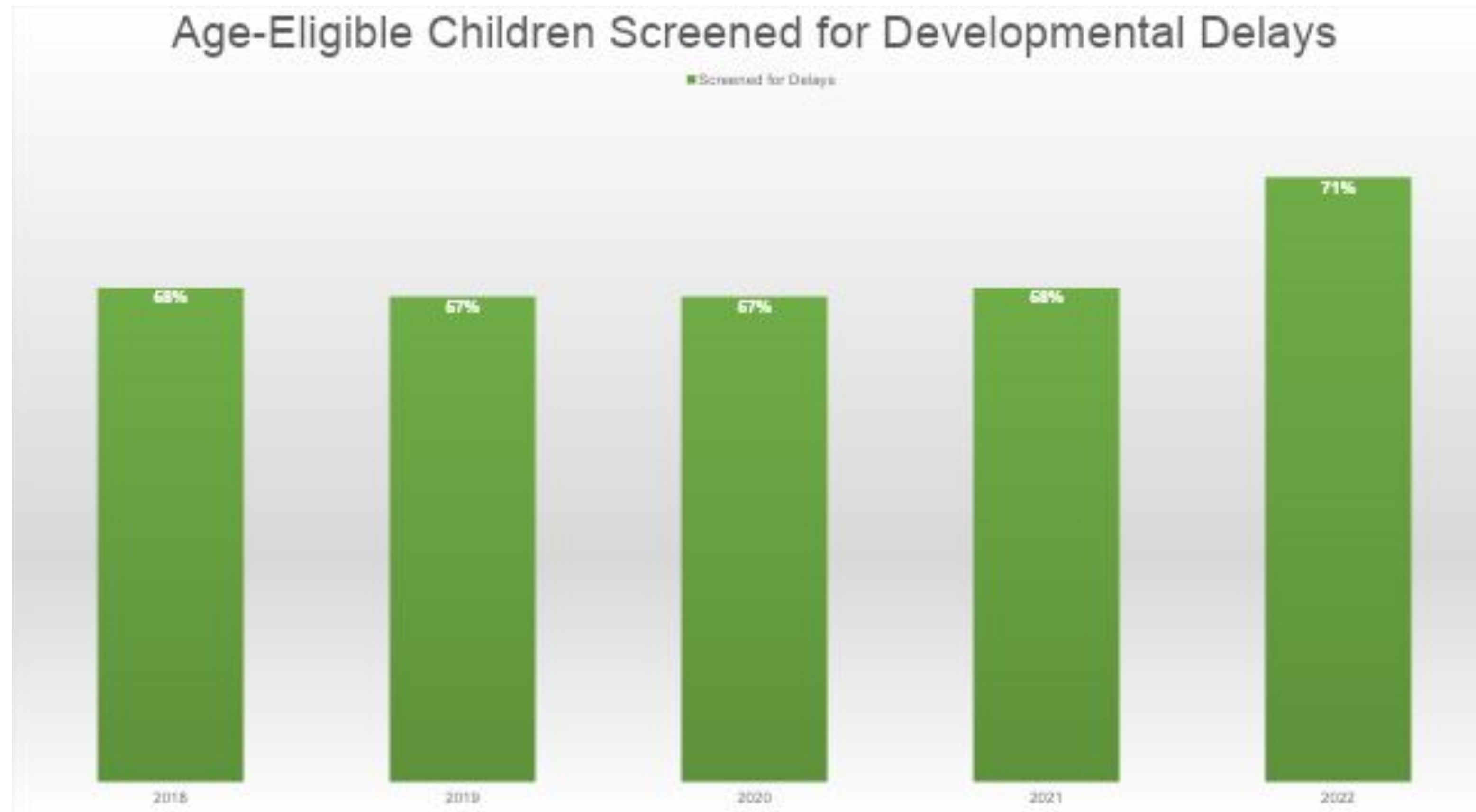


# Five Year Trend Data – Engage Earlier

- Prenatal Enrollments



# Five Year Trend Data – Screen for Developmental Delays





**ANY QUESTIONS?**

---

**THANKS FOR LISTENING!**

Janet Nickell Horras  
State Home Visitation Program Director  
Iowa Department of Health and Human  
Services  
[Janet.Horras@idph.iowa.gov](mailto:Janet.Horras@idph.iowa.gov)

Shanell Wagler or Amanda Winslow  
ECI Office - Iowa Department of Health  
and Human Services  
[Shanell.Wagler@iowa.gov](mailto:Shanell.Wagler@iowa.gov) or  
[Amanda.Winslow@iowa.gov](mailto:Amanda.Winslow@iowa.gov)