

AUG 17 1982

LD
2547
.A72
1982

Iowa state university

information and application for prospective transfer students 1982|83



STATE LIBRARY OF IOWA
Historical Building
DES MOINES, IOWA 50319

contents

2 iowa state university	3 Academic reputation	5 A cultural feast
	3 Iowa State's heritage	6 Housing
	3 Iowa State today	7 A beautiful campus
	4 Sports and recreation	8 The students

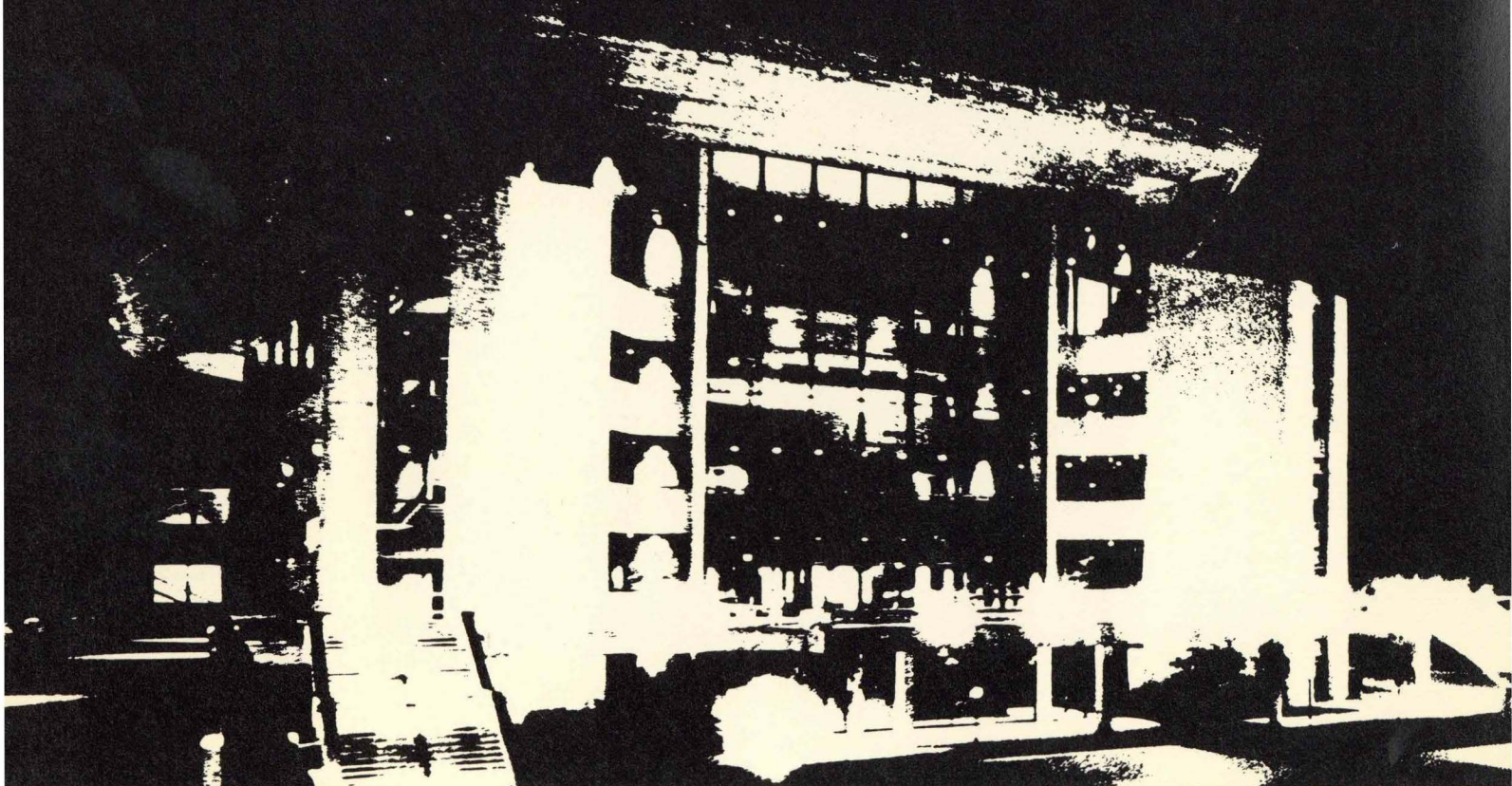
9 information for prospective transfer students	9 Admission	13 Student services
	10 Other academic information	13 Costs
	11 Special programs	14 Financial aid programs
	12 Housing	

17 colleges and curricula	17 College of Agriculture	19 College of Home Economics
	18 College of Design	20 College of Sciences and Humanities
	18 College of Education	21 College of Veterinary Medicine
	19 College of Engineering	

22 for more information

Application form at back of booklet

Visits to the campus. Please review the campus map inside the back cover for directions to admissions offices, parking instructions, and office hours.



academic calendar

spring semester 1983	Registration (new students report)	January 17
	Classes begin	January 19
	Commencement	May 21
<hr/>		
summer session 1983	Summer session registration (new students report)	June 6
	Classes begin	June 7
	Summer session commencement	July 30
<hr/>		
fall semester 1983	Registration (new students report)	August 22
	Classes begin	August 24
	Commencement	December 17
<hr/>		
spring semester 1984	Registration (new students report)	January 16
	Classes begin	January 18
	Commencement	May 19
<hr/>		
summer session 1984	Summer session registration (new students report)	June 11
	Classes begin	June 12
	Summer session commencement	August 4

Iowa State University is committed to the concept and practice of affirmative action and does not discriminate on the bases of age, color, creed, handicap (mental or physical), national origin, race, religion, sex, or status as a disabled veteran or veteran of the Vietnam era.





You are about to make some of life's most important decisions—**what** you want to do with your life, with **whom** you want to live your life, the **kind** of life you want to live.

Big decisions? Some of your biggest.

You could be making those decisions in an atmosphere of challenge, fun, and mind-stretching experiences where you meet exciting new people and see opportunities you never knew existed.

There is a place where you can explore anything from cello to TV advertising, laser beams to social work, aerospace engineering to wildlife management, teaching and research to building bridges or designing homes, scientific food production to economics, politics to business.

Does this sound like it is a place for everyone?

It **is** the place for the discriminating and thoughtful young man and woman. Year after year it is the choice of **more** high school seniors than any other college or university in Iowa, but it is **particularly** the choice of young people seriously interested in obtaining sound, first-rate educational opportunities in exciting circumstances. Its scholarship is internationally known. Its degrees are solid marks of achievement. It's the place graduates fondly recall as part of "the best years of my life."

It's Iowa State University.

Going to college is living, learning, growing, working hard, having fun, discovering who you really are, being "on your own."

Here are some of the things you will find when you choose to spend those all-important years at Iowa State.

Application for admission is in the back of this booklet.

Academic reputation



Iowa State's reputation as an institution of academic excellence unquestionably exceeds its other fine attributes. Very simply, it is known as a "good school." Persons attending Iowa State are looked to with respect. They are serious scholars.

The classroom education you will gain at Iowa State will be enhanced and made more meaningful by exposure to lectures, plays, concerts, sports, and the sheer stimulation of being challenged by other students with goals and aspirations for success.

But the essence of what college is all about is the excellence to be found in its classrooms, lecture halls, and laboratories. Iowa State's reputation in this area needs little elaboration.

Iowa State's heritage

Iowa State's earliest courses in homemaking, mechanics, and farming have grown into internationally respected colleges of Home Economics, Engineering, Agriculture, and Veterinary Medicine. (Recently, the top scholar in the College of Veterinary Medicine was a woman and the top scholar in the College of Home Economics was a man, so don't jump to any stereotypical conclusions!)

The College of Veterinary Medicine, now in its second century, is the oldest in the nation and is housed in some of the newest and most advanced veterinary medical facilities in the world. The College of Agriculture faculty was ranked among the top three in the nation in a recent survey.

The College of Engineering is one of the largest and most distinguished in the nation. The College of Home Economics has been a pioneer and is one of the best in its field.

The Land-Grant ideal

Since the day Iowa State opened its doors to students in 1868, it has been co-educational, it has been "the people's college," and it has stood squarely in the midst of society's concerns.

In fact, Iowa was the first state to accept the terms of the Land-Grant College Act, signed by President Abraham Lincoln in the depressing Civil War days of 1862. Iowa State has carried the Land-Grant banner throughout Iowa for more than a century,

taking the college to the people and making the entire state its campus. ISU does not exist in an ivory tower. Iowa State shares its best thinking with those beyond the campus.



Iowa State today



Humanities and the arts

In recent years, Iowa State has become a broad-based institution with increased academic emphasis in the humanities and the arts while maintaining its position in the scientific and technical fields.

Students at Iowa State University may earn undergraduate degrees in English, foreign languages and literatures, history, music, and philosophy. The departments of English and history have thriving graduate programs. The College of Sciences and Humanities—a liberal arts college within the University—is the largest college at Iowa State and is larger than any private college or university in Iowa.

New college and school

The College of Design, formally organized in 1978, is the newest at ISU. It brings together, in the striking College of Design building, curricula in advertising design, art education, craft de-

sign, interior design, general art, architecture, landscape architecture, and community and regional planning.

The School of Business Administration (in the College of Sciences and Humanities), established in the fall of 1980, offers two undergraduate degrees: the Bachelor of Business Administration and the Bachelor of Science in Business Administration. The B.B.A. program features specialization through majors offered in accounting, finance, marketing, management, and transportation/logistics; the B.S. program is a broadly based liberal arts curriculum in general business.

A cosmopolitan atmosphere

Iowa State is a major midwestern university and a center of learning for more than 24,000 students, undergraduate and graduate. They come from all 50 states and from 95 other nations. Iowa State has for years at-

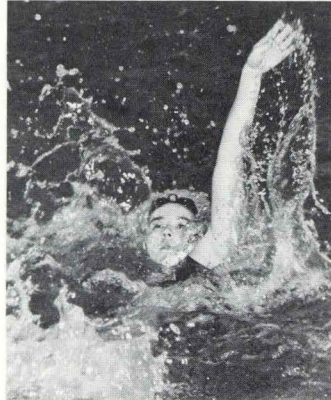
tracted the largest number of Iowa students directly from high school. Over 40 percent of Iowa State's undergraduate students are women.

Iowa State is a cosmopolitan place. It is a center of culture. It is proud of its heritage, its growth, and its many attractions.

Renowned alumni

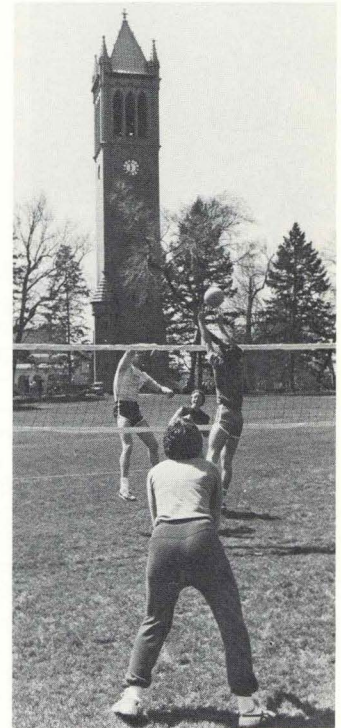
George Washington Carver learned on the Iowa State campus. So did Henry A. Wallace. So did Vincent Atanasoff, who invented the electronic digital computer in the basement of the old Physics Building. So did Carrie Chapman Catt, the pioneer feminist. So did T. A. Wilson, Boeing's chairman of the board. So did Hugh Sidey, biographer, commentator, and observer of U.S. presidents. So did thousands of others who are leaders in business, education, politics, science, and industry today.

Iowa State is proud of its nationally known Cyclone teams, but it is equally proud to offer one of the nation's largest intramural programs. Each year more than 13,000 men and women participate in such sports as handball, swimming, volleyball, tennis, flag football, basketball, broomball, and others that will teach you, test you, and keep you in shape.



Sports clubs

Beyond the classroom and the laboratory, Iowa State can help quench nearly any thirst for physical challenge. Dozens of sports clubs, many subsidized by student fees allocated through the student government, cater to the novice and the expert with interests ranging from hockey to trap shooting, parachuting to rugby, rodeo to fencing, downhill skiing to archery, flying to boxing. Sports clubs often seek off-campus competition and activities.

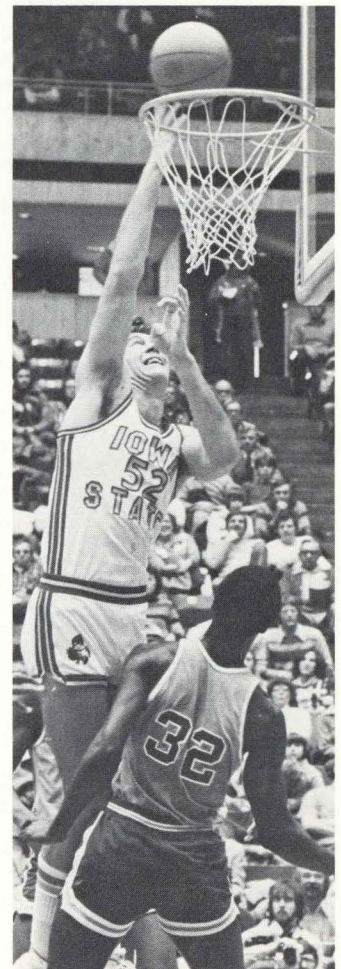


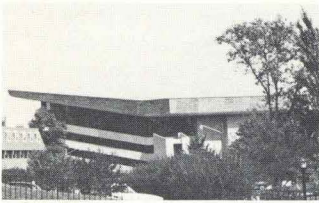
Big Eight competition



Iowa State is an excellent place to be a sports fan, too. ISU is a member of the respected Big Eight Conference and competes successfully within its conference and in the nation. Men's teams have repeatedly been national champions in wrestling and gymnastics. Cyclone football teams have been ranked nationally in recent years and have made several post-season bowl game appearances. Iowa State's

women's cross country track team is among the finest in the nation, having captured successive national team championships and individual world-class records. Iowa State also has improving programs in men's and women's basketball, golf, tennis, swimming, and other sports.





The cultural attractions at Iowa State are superb and, in some cases, without equal. Many are provided at special low prices for students. Many are of the caliber to be found only on a campus with the size and facilities of Iowa State.

The Iowa State Center

The magnificent Iowa State Center, built without the use of either state or federal appropriated funds, has provided a showcase for the arts unlike any other. The Center is the site of the Ames International Orchestra Festival, a series that has featured the

finest orchestras in the world, such as the New York Philharmonic, the London Symphony, the Philadelphia Orchestra, the Leningrad Philharmonic, the Boston Symphony, the Amsterdam Concertgebouw, and the Vienna Philharmonic.

A parade of stars

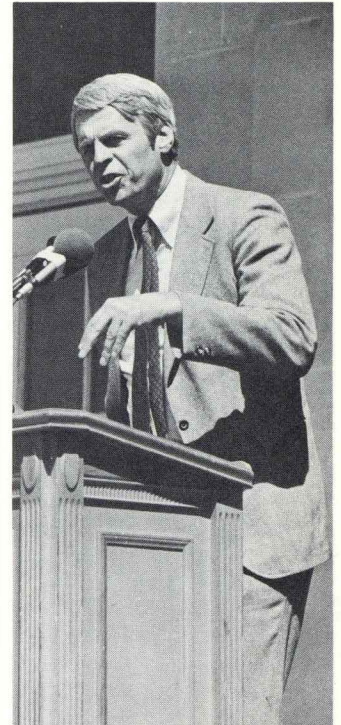


Popular attractions

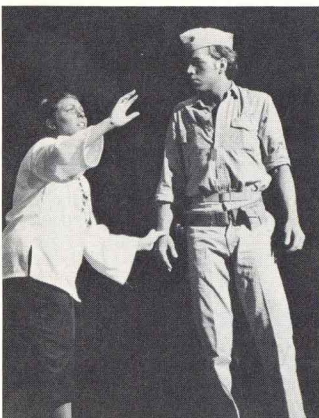
Some of the most talented artists and groups in the world of popular music appear at Iowa State. Students have recently had opportunities to see Queen, The Commodores, Elton John, Linda Ronstadt, The Who, The Beach Boys, Bruce Springsteen, Billy Joel, Marshall Tucker Band, Kansas, Eric Clapton, Steve Martin, Jackson Browne, and Willie Nelson. The parade of stars continues year after year.

Music series and lectures

Iowa State's Music Council sponsors dozens of attractions including Broadway musicals, dancers, instrumentalists, vocalists, and ensembles, many at special discount rates for students. The Lectures Committee sponsors appearances by some of the most famous, best informed, and occasionally the most controversial personalities on the public scene. Most lectures are free.



A showplace for the arts



Drama and music

Iowa State is blessed with rich theatrical offerings for which you may perform, join the stage crew, or become part of the audience. ISU Theatre, a part of the Department of Speech, offers several productions each year. Regular attractions are also provided by the Memorial Union's Maintenance Shop, a showcase for a bright array of local and off-campus talents.

Concerts and recitals by instrumentalists and vocalists from the Department of Music are part of the fare as are presentations by the ISU Orchestra, Concert Band, Jazz Ensemble, ISU Chorus, Oratorio Chorus, ISU Singers, and Musica Antiqua, a group that plays medieval music on instruments of the period.

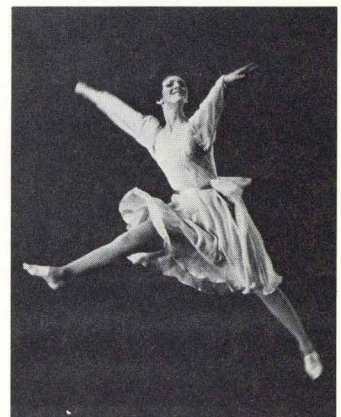
Iowa State now has a new Music Hall, completed in 1980, which brings together under one roof all phases of the music program: classrooms, teaching laboratories, practice rooms, rehearsal rooms, studios, and a recital hall.

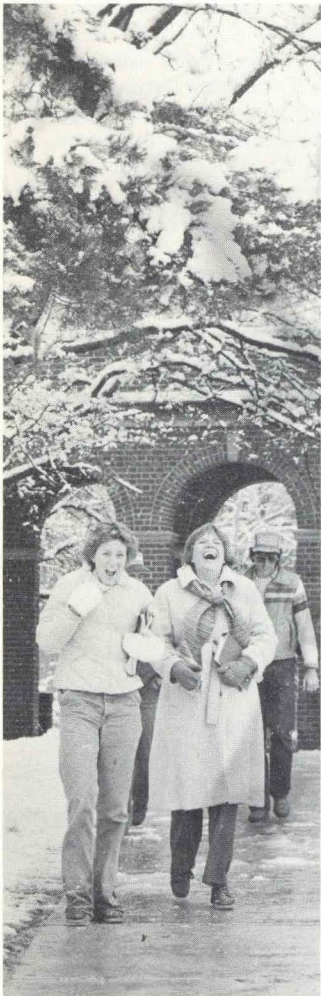
Art and modern dance

The spacious Brunner Gallery and Museum at the Scheman Building in the Iowa State Center offers ever-changing displays of artwork in every medium, from photography to metal sculpture. Artwork is also exhibited continuously in the College of Design.

The dance program presents Barchje (Bar-SHAY), a student-danced production originated and choreographed by students each year.

Iowa State has become a distinct cultural focal point in the decade since the inception of the Iowa State Center. The university is a stage for the finest in the classical and the contemporary arts.





Living

Living is an important part of going to college. Much learning takes place outside the classroom.

In the relaxed small-city, large-campus atmosphere of Ames and Iowa State there is a variety of opportunities for living as individuals in the university's extensive residence hall system, in university-owned apartments, in small groups in fraternities or sororities, or in off-campus housing.

It's your choice. Iowa State does not require any of its students to live in residence halls so you may live in a Greek house, a

private room, an off-campus apartment, or university housing, according to your preference.

Residence halls

Residence halls at Iowa State are widely regarded as among the best in the nation. Their popularity is attested to by the over-demand which they regularly experience and by the close friendships that develop in the "houses" in each of the halls. Residence hall living is popular at Iowa State. Each student is immediately a part of a group that governs itself, sponsors its own social activities, and develops its own intramural sports program.

Residence hall living is an adventure in "being on your own" but also being part of an atmosphere that can create lifetime friendships.

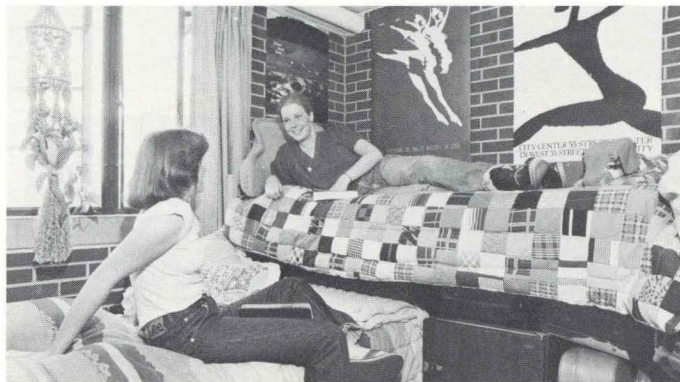
University-owned apartments

On-campus apartments for both single and married students are also in demand at Iowa State. Students in university-owned apartments govern their own community through a mayor and a council and share the pleasures and problems found in any community of approximately 1,300 families.

Greek housing

For students who want the unique experiences of fraternity or sorority living, the Greek system at Iowa State is exceptional. Several times in recent years the sorority and fraternity systems have been judged the best in the nation. The 32 fraternities and 16 sororities provide housing for approximately 1,500 men and 750 women.

Students interested in participating in fraternity and sorority rush activities may do so prior to fall classes. They also have additional opportunities during the academic year.



Off-campus housing

Housing for university students in the city of Ames has expanded and greatly improved in recent years. Ames can provide off-campus apartments ranging from a single modest room, or two or more rooms shared by several persons, to a luxurious private condominium. Most students find suitable housing somewhere between the extremes. The newly-expanded Cy-Ride public transportation system in Ames makes plentiful off-campus housing more convenient than ever before. The Department of Residence, the student-sponsored Tenant-Landlord Service, and the Ames Chamber of Commerce provide free help to students seeking off-campus housing.

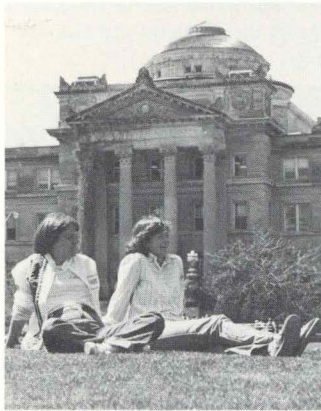
More about Ames

Ames is an unusually nice, small city about thirty minutes north of Des Moines, Iowa's capital. Since students make up nearly half its population, it has a college-town atmosphere with all the unique advantages a large campus brings to a friendly community of 50,000. It has plenty of pizza parlors, movies, and restaurants—along with shopping

malls, book stores, and ready-to-wear shops.

Although the university provides an on-campus Student Health Service with a staff of nine doctors, the city of Ames is known for its medical center with more than 50 doctors and a 217-bed hospital, all within minutes of the campus community.





When George Washington Carver was here, the Iowa State campus was spacious, wooded, and green. Today, it is still a beautiful place, comfortably situated in a 1,000-acre central campus "park" and a bright south campus dominated by the Iowa State Center, the football stadium, and the College of Veterinary Medicine. (The central campus is closed to automobiles while classes are in session during the academic year to preserve its park-like atmosphere.)

The Campanile

The heart of the main campus is what was originally known as "the great central lawn." Here, on central campus, Iowa's seasons display their colors and moods. The Stanton Memorial Carillon—

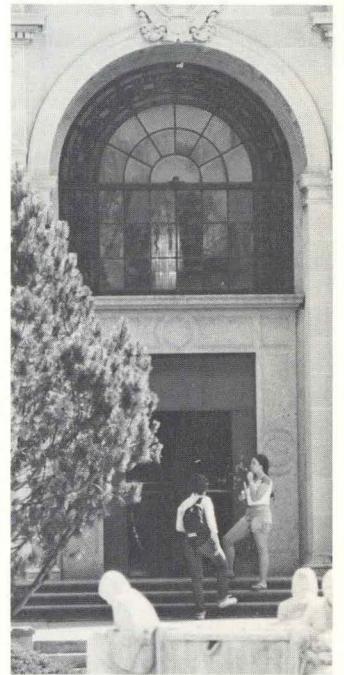
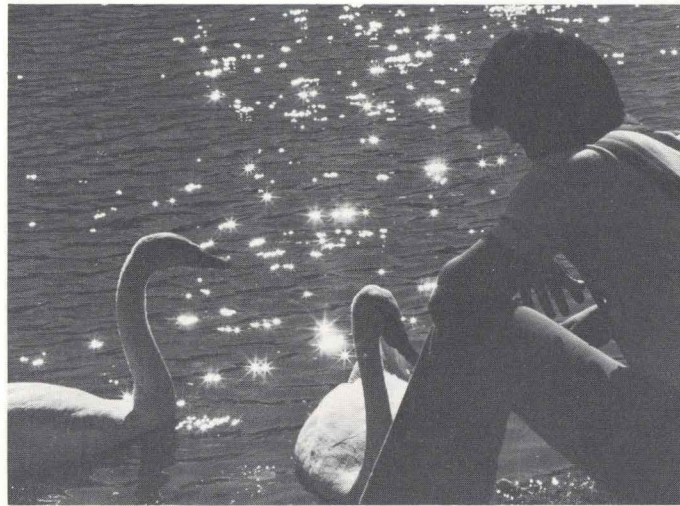
an Iowa State landmark for more than 80 years—tolls the passing hours and its bells play the music of Mozart or Gershwin or Manilow. Students find the central campus an inviting place to daydream through a drowsy springtime hour or toss a frisbee or watch the stars.

Lake LaVerne

Lake LaVerne is picturesque and idyllic—until the clamor and the color of the springtime canoe races bring roars and applause from spectators along its shoreline. In the calm and quiet of the warm-weather months, the resident swans—Lancelot and Elaine—glide majestically over its surface and rude ducks scrap for crumbs tossed by benevolent visitors.

Memorial Union

Another landmark at Iowa State is its Memorial Union, a center of activity that has served students for more than 50 years. The Union houses offices for most student organizations. It offers bowling, billiards, foosball, crafts, a browsing library, food, soft drinks, beer and wine, comfy couches and large lounges, big-screen television, and fine guest rooms for visitors to the campus. The Union is a private "club" and every student at ISU is automatically a member.



Campus traditions



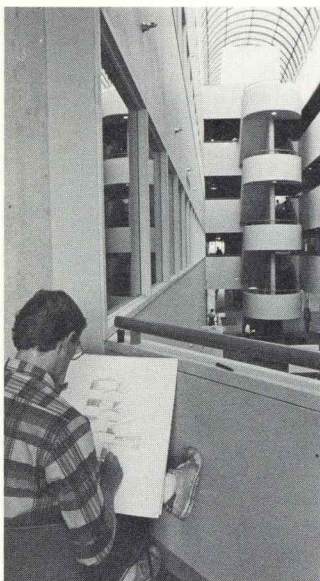
Weishea festival

The canoe races are part of Weishea (VEE-sha), Iowa State's annual "open house" and the largest student-managed festival in the nation. It began sixty years ago as a spring fling, and its name was derived from the first letters of what were the five divisions of Iowa State College. Today, Weishea draws many thousands of visitors to the campus for displays in Iowa State's colleges and academic departments, for live exhibitions on the grass of central campus, for a colorful parade, for presentations and awards, and for special theatrical attractions and popular concerts.

The zodiac

Within the Union is a handsome brass zodiac inlaid in the floor near the revolving main door. The designer hoped it would be constantly burnished and worn flush by the shoes of generations of students. However, the design is rarely trod upon, for—it is said—whosoever traverses the zodiac will flunk his or her next examination. Iowa State is a center of science and its students respect the empirical method, but why take unnecessary chances?





Among other organizations headquartered in the Union is the Government of the Student Body (GSB). Students at Iowa State are represented on university-wide committees and GSB makes student appointments to those committees. The GSB has other responsibilities, including the allocation of approximately a half-million dollars in student activity fees each year.

Student publications

Students at Iowa State may be more expressive than those on some other campuses. ISU has more student publications than any other college or university in the United States.

The **Iowa State Daily** is a full-fledged daily tabloid newspaper written, edited, and published by students. There are several college magazines as well. **Sketch** is a student literary and artistic journal.

Your experience counts

There is only so much you can be told about a place like Iowa State University. Your experiences will be different from anyone else's and so will your observations. Your acquaintances and friends and your ability to get along with them, with professors, and with the many others who keep the university going will have a lot to do with your impressions.

Smaller pieces

That, of course, is true wherever you may go and whatever you may do. Iowa State is large by some standards, but it is made up of many smaller pieces; and it is made up of men and women who have a lot in common with you.

Iowa State has a reputation for high academic standards. It is a rigorous school, but its staff and faculty members and its administrators are concerned people. ISU is a warm and humane place where people who don't even

know each other exchange greetings as they pass on campus walks.

ISU is for students

Iowa State has professional staff members whose job is to see you over rough spots, to listen to your concerns, and to help you visualize all the possibilities available to you. Every faculty member has an interest in you—although some may show it more than others. Staff members work to make the place efficient and effective for the people it is designed to serve—students.

ISU is for you

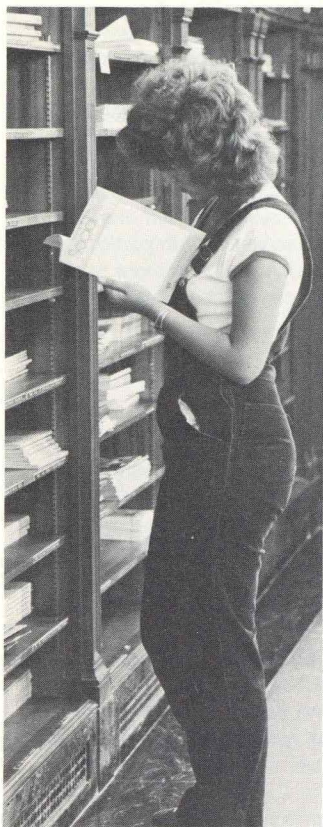
Iowa State is big enough and diverse enough to help you become or try just about anything you want. Yet it is small enough to provide a warm and friendly atmosphere.

Many thousands of bright, talented, and dedicated people who have made significant contributions in the world call Iowa State University "my school."

Iowa State can be your school, too.



Admission



You are considered a transfer student if you have enrolled for any college-level course work, full-time or part-time, since graduating from high school. Iowa State University usually gives full credit for course work completed at other regionally accredited colleges and universities if passing grades are achieved and if the courses are not remedial level. In instances where courses or programs are extremely different from Iowa State offerings, the Admissions Office will consult with the academic department at Iowa State most closely related to the subject matter to obtain a recommendation concerning the transfer of such courses. The university may refuse to accept credits for course work completed at nonaccredited institutions, or it may accept these credits provisionally, with the stipulation that they be validated within a specified period, usually one year.

Generally, transfer students are admitted at the class level they have attained in their previous college or university study. However, regardless of the number of credits transferred, students must meet all general and specific graduation requirements of their undergraduate college and of the university.

If a student transfers nine or more semester credits earned under a Pass-No Pass system, additional Pass-No Pass credits cannot be taken and applied toward a degree at Iowa State.

When to apply

Applicants are encouraged to apply for admission well in advance of their desired entry date. Students seeking admission for the fall semester should apply during the fall of the year preceding their entry at Iowa State. Applications for other terms should be submitted nine to twelve months in advance of the desired entry date. This allows sufficient time to arrange for housing, apply for financial assistance (the priority deadline is March 1), and make plans to attend transfer student orientation.

How to apply

You should complete the application furnished at the back of this booklet and return it to the Admissions Office with a \$10 application fee payable by check or money order to Iowa State University. (Please do not send cash by mail.) If you are currently enrolled in college, please be certain to list on the application the courses you are now taking and any additional courses you plan to complete prior to your entry at Iowa State. Since your schedule will be planned according to this list, it is important that this information be accurate and that you notify us immediately if you make any changes.

Then request that each college or university you have attended send an official transcript of your academic record to the Admissions Office, 7 Beardshear Hall, Iowa State University, Ames, Iowa 50011. In instances when your high school record is needed, you will be notified accordingly, but if you have completed less than one full year of college-level study at the time you apply for admission to Iowa State you should request that the high school from which you graduated send your transcript.

Academic requirements

As a transfer student you are generally expected to have earned a C (2.00) average for all of the courses you have attempted. Credit and courses from other regionally accredited institutions are normally accepted for transfer to Iowa State, provided that the courses are comparable to courses offered for academic credit at Iowa State. A course is deemed comparable to a course offered for academic credit at Iowa State if it is similar to a course offered for academic credit at the university, or if it is of such a nature that it would carry academic credit if it were offered by the university. You should note, however, that all transferable credit may not be applicable toward your particular program or major. Credit not applied in the curriculum may be used as elective credit with the approval of your department. You should consult the university General Catalog and possibly

correspond with your department for information on degree and curriculum requirements when planning your program at another institution. Your last 32 semester credits must be completed at Iowa State.

You may transfer a maximum of 65 semester credits (97 quarter credits) from a two-year college. Once you have earned a total of 65 semester credits (97 quarter credits) at the college or junior-college level, you will not receive transfer credit for subsequent work taken at a two-year college. Credit earned in excess of the maximum credit acceptable from a two-year college is not applicable toward the minimum total hours required for a baccalaureate. However, this work is entered on your Iowa State record and may be used to meet specific course requirements.

Notification of admission

Within three to four weeks after receipt of your application and all of your transcripts, you will receive a letter from the Admissions Office telling you of the action taken on your application. An official evaluation of your transfer credits will be sent with your letter of acceptance. Admission commitments are issued for a specific term and may be used only for the term specified.

Medical history

New students will be sent a medical history form with their letter of admission. Students are asked to complete this medical history and return the form to the Student Health Service, Iowa State University, Ames, Iowa.

Orientation

Orientation is the individual experience of a student becoming acquainted with the various resources and opportunities that are available within the university. The primary opportunities are provided in the summer and fall orientation programs.

Some colleges, however, hold special orientation sessions for transfer students during spring semester. These sessions are very similar to the summer orientation sessions, except they are held on a weekend. Sessions are



also held at the beginning of spring and summer terms for all new students entering at either of these times.

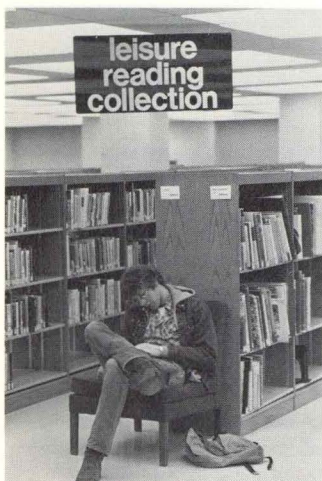
Stay A Day

"Stay A Day at ISU" is designed to give you a taste of what it's really like to live and study at Iowa State University. By returning the preregistration card in the back of this booklet at least three weeks before you would like to visit, you can be a participant in our program on a space-available basis. We will provide you with

overnight housing with an Iowa State student host/hostess or you may arrange your own overnight accommodations by staying with a friend or in a local motel. The day following your overnight stay, you will speak with an admissions counselor in the Admissions Visitor Suite, tour the campus, visit a class and speak with a departmental adviser. The basic cost of "Stay A Day" is \$10. Once we have received your preregistration card and determined the availability of spaces, we will send you a letter request-

ing that you submit a \$10 reservation fee payable by check or money order to Iowa State University. There are seven "Stay A Day" programs during 1982-83—October 12, November 2, November 16, February 1, February 15, March 1, and April 26. You are encouraged to visit the campus almost any time without an appointment and are not required to return the card unless you wish to participate in "Stay A Day." For more information contact the Admissions Office.

Other academic information



The university year

The academic year at Iowa State is composed of two semesters of approximately 16 weeks each. Fall semester begins in late August, and spring semester in mid-January.

The third term of the calendar is the summer term.

Students may enroll at Iowa State to begin study fall semester, spring semester, or at the beginning of the summer term.

Grading and credits

Because Iowa State University operates on the semester system, the unit of credit is the "semester hour." This unit represents one 50-minute class period per week for the duration of a 16-week semester. The credit hour load varies somewhat, but most students carry from 15 to 17 credits each semester.

Iowa State University uses a grading system with passing grades of A, B, C, and D. University policy permits instructors to also use plus and minus grades. Two semester credits are equivalent to three quarter credits.

Catalog in effect

A student may choose to graduate under the catalog in effect at the time of graduation, or one of the two immediately preceding

catalogs, provided it covers a period of his or her enrollment either at Iowa State or any other accredited college or university preceding enrollment at Iowa State. Full requirements of the chosen catalog must be met except that adjustments will be made in instances where courses are no longer available or where programs have been changed.

Iowa Community College/ Regents Articulation Agreement

A transfer student entering the College of Sciences and Humanities with an A.A. degree from an Iowa community college with at least 60 semester or 90 quarter hours acceptable for transfer and at least a 2.00 cumulative average will be considered to have met the general education requirements of the college providing the transfer courses are distributed to meet the group requirements of the college.

Transfer of "test-out" credit

Credit established by examination at another accredited college or university will be accepted for transfer if it is accompanied by at least 12 hours of credit earned in residence at the institution making the report.

Transfer of CLEP credit

College Level Examination Program (CLEP) credit awarded by

all Iowa public institutions is acceptable for transfer if it is accompanied by at least 12 semester hours (18 quarter hours) of credit earned in residence at the institution making the report.

Transfer of vocational-technical credit

Iowa State will accept up to 16 semester (24 quarter) hours of credit earned in vocational-technical courses completed at Iowa community colleges if such credit is applicable to the Associate in Arts or Associate in Science degree at the sending college.

Advanced standing credit for military courses

Credit will be awarded for successful completion of technical or specialized schools attended while on active duty with the armed forces to the extent that the material is applicable toward degree requirements at Iowa State. Application for such credit is made at the Office of Admissions which is guided by the recommendations of the American Council on Education (ACE).

Credit will be allowed for college courses completed through the United States Armed Forces Institute (USAFI) by correspondence study and the Defense Activity for Non-Traditional Education Support (DANTES) subject to the usual rules involving credits of this nature.

ROTC

The university offers a full range of elective ROTC programs for men and women leading to an Officer's Commission in the Army, the Navy or the Marine Corps, and the Air Force.

Today, the military services are facing increasing demands for new officers with college backgrounds. For transfer students, this presents some outstanding opportunities for ROTC full-tuition scholarships and for post-college employment in areas related to individual academic and professional objectives.

Each ROTC department at Iowa State offers programs designed to accommodate students in all academic majors. Men and women who desire information are urged to check the appropriate block on the application for undergraduate admission. The ROTC offices listed in the "Where to Inquire" section (at the back of this booklet) may also be contacted directly.

Correspondence study

Iowa State University does not offer correspondence courses. However, college-level courses taken by correspondence from accredited universities are acceptable for transfer at the undergraduate level if the courses taken are those which do not require laboratory study.

Local departmental examinations

You may take locally given departmental examinations for undergraduate credit in certain specified courses in areas for which you and the department feel you have the necessary preparation. These examinations are administered by the department offering the course, and students interested in taking a test-out exam should contact the appropriate department for specific information.

If you pass the examination, a grade of "T" will be reported to the Registrar's Office. The "T" grade represents performance equivalent to a "C" grade or

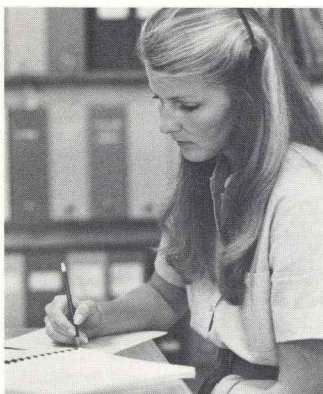
better. "T" grades are not used in computing your quality-point average, but the credit does become part of your permanent academic record.



Motor vehicles

Students may own and operate motor vehicles—automobiles, motor scooters, and cycles. Motor vehicles, however, are in no way necessary for an Iowa State student, and parking is limited. Students are charged to park automobiles on campus. All motorized vehicles operated by students must be registered at the Parking System Office. Bicycles must display a City of Ames license tag which can be obtained at no charge from the Parking System Office.

Special programs



Adult students

The Adult Student Information Office, located in the Student Counseling Service, Student Services Building, is open to anyone 25 or older who is returning to college or who is thinking about college study. The office provides information, counseling, tutorial information, and contact with other adult students on campus.

Honors Program

The University Honors Program provides an academically enriched and unique education for high-ability students. Honors students enroll in special seminars and sections of regular courses, and with the help of an honors adviser, they chart their own individualized programs of study.

Transfer students are eligible to apply for admission to the Honors Program after one semester of work at Iowa State as long as they have at least 32 semester credits remaining before graduation at the time of admission.

Interested students are invited to apply through the Honors Program Office, Osborn Cottage.

Minority students

Minority students are encouraged to contact the Admissions Office regarding admission and special services available. The Office of Minority Student Affairs coordinates academic and financial services for minority students. Individualized assistance is provided by academic specialists, student counselors, and program staff members.

The Summer Enrichment Program is a program for minority and disadvantaged students. College credit is granted, and study and social skills are emphasized.

There are several active minority student organizations on campus, including the Black Student Organization, the United Native American Student Association, and the Hispanic American Student Union.

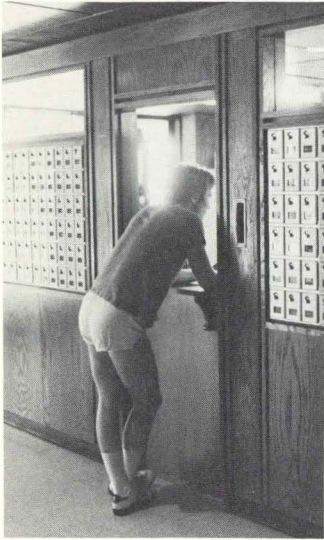
Veterans

If you are now in military service or if you are a veteran of military service, you may be eligible for educational benefits from the Veteran's Administration. These include monthly allotments and provisions for tutoring services.

To prevent delay of your allotment checks, please contact the Veterans Clerk, 107 Beardshear Hall, 60 days before you expect to enroll at Iowa State.

The Peer Adviser Center in Alumni Hall offers help with your problems as well as a place for you to study, relax, and meet with other veterans.





New students must be admitted to the university by the Admissions Office before they can apply for university housing. Students who are admitted and apply for housing eight months or more before the beginning of fall semester generally can be assured of university housing.

University housing is offered in residence halls and in university-owned apartments. Housing is also offered in fraternity and sorority houses and in privately owned homes and apartments off campus.

The university provides 20 undergraduate residence halls and one graduate hall for men and women.

Residence halls

New students will receive information concerning university housing with their notification of admission if they requested such information on their application for admission. Those students who complete contracts for housing in a university residence hall or apartment for fall semester but later decide to cancel those arrangements may do so and obtain a refund of the housing deposit if the Residence Office is notified before July 1.

Rooms in the residence halls are furnished with single beds, innerspring mattresses, chests of drawers, study desks, chairs, window drapes in most halls, and telephones. Students provide their own pillows, blankets, bed linens, mattress pads, towels, and study lamps, and clean their own rooms.

The room and board fee for each semester covers both room and board and basic telephone costs in the undergraduate halls. Students who sign a residence hall contract are obligated to room and board in the residence hall for the entire academic year if they remain in school, except under special conditions where a release may be granted by the Director of Residence.

Room assignments for fall semester for those who have room contracts on file with the Director of Residence are made after July 1.

The Interfraternity Council encourages men who are planning to live in a fraternity not to sign a residence hall room contract, or to sign a contract and request assignment to temporary housing. By requesting the temporary housing option, students are assured of housing and yet are able to cancel their contracts at any time without cost. Men who join a fraternity usually live in their fraternity chapter house.

Since space is not normally available for freshman women in a sorority house, women should contract for a room in a university residence hall to be assured of housing.

University-owned apartments

Married students, single parents, and other single students live in on-campus university apartments. The University Student Apartments consist of Pammel Court, Hawthorn Court, Schilleter Village, and University Village. Inquiries should be directed to: University Student Apartment Office, 100 University Village, Iowa State University, Ames, Iowa 50010.

Sororities and fraternities

National sororities and fraternities have been established at Iowa State University since 1875 with the approval of the university.

Women admitted to or enrolled at Iowa State University are eligible for sorority affiliation. Active members or pledges living in the chapter house pay monthly house bills averaging \$215. This includes board, room, social and national dues, and may include a building fund payment. Transfer women who pledge sororities may wish to contract for university housing to be assured of accommodations. Upperclass women may move into their sorority houses any time on invitation by the chapter, providing they abide by the provisions of their residence hall contracts.

New women students will receive a Sorority Rush Book in the spring or early summer.

Formal sorority rush is held in the fall prior to the opening of school. Women interested in participating in the fall rush program must submit their rush fee and card (which is an insert in the Sorority Rush Book) to the Panhellenic Adviser **before July 15**. Registration received after this date **may not** be accepted.

Men admitted to or enrolled at Iowa State University are eligible for fraternity affiliation. Men who have already made plans to pledge a fraternity should not contract for a room in the residence halls, since the contract is binding for the full academic year. Those joining a fraternity are usually allowed to live in their fraternity chapter house. Monthly expenses in fraternities average about \$220 for board, room, and dues.

Recruitment occurs during the summer and through formal rush, which takes place immediately before the beginning of fall classes. The registration deadline for fall 1983 is August 5.

All new students will receive a rush pamphlet containing information about fraternities or sororities at Iowa State. Further information may be obtained by writing to: Greek Affairs Adviser, Office of Student Life, Student Services Building, Iowa State University, Ames, Iowa 50011.

Off-campus housing

Many students choose to make off-campus living arrangements. If you prefer to live off campus, we encourage you to investigate off-campus housing by contacting the Single Off-Campus Housing Office, 1212 Friley Hall, Iowa State University, Ames, Iowa 50012 (515-294-2364), the Tenant-Landlord Service, 39 Memorial Union, Iowa State University, Ames, Iowa 50011 (515-294-8654), or the Ames Chamber of Commerce, 205 Clark, Ames, Iowa 50010 (515-232-2310). These offices are prepared to provide you with a listing of Ames realtors and privately-owned apartments in the Ames community which you can use to find housing to suit your needs.

Personal services

Diet table—Students with special dietary needs may receive specially prepared meals through the Student Health Service rather than regular residence hall meals. The cost for this service is a few dollars per semester above the board rate in the residence halls.

Learning disabilities—Students with learning disabilities should contact the Student Counseling Service to find out what services may be available at Iowa State to counteract their particular disability.

Physical handicaps—Students with physical handicaps can receive information regarding the availability of readers and the relocation of classes to ensure accessibility by contacting the Office of Student Life.

Writing Clinic—Students who need to develop their writing skills before taking regular English composition classes may enroll in the Writing Clinic which is administered by the English Department.

Student Counseling Service

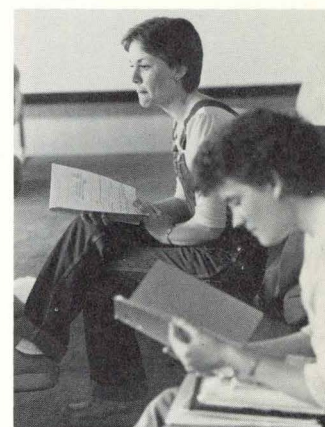
If you have difficulties—personal, educational, vocational—the Student Counseling Service offers you professional confidential counseling and testing services at no charge. Appointments to talk with a counselor may be made at the Student Counseling Service, third floor of the Student Services Building.

Student Health Service

The Student Health Service in the Student Services Building on campus maintains a medical staff at all times for primary medical care and emergencies. Students who require special diets for medical conditions may eat at the hospital diet table.

Many services will be available free of charge to students who pay a voluntary health fee (\$15 per semester). Students who do not participate in the program will be charged fees for each service.

All students will be responsible for charges resulting from accidents, emergencies, or surgery, and therefore the Health Service recommends that you have health insurance coverage. Health insurance is available



through the Student Health Service and may be purchased at registration or after enrollment.

Placement services

As you begin to explore career alternatives, your college Placement Office is an important resource center. There you will find information on career opportunities, data on specific employers, and tips on job-hunting techniques.

In addition, your college Placement Office also offers vocational counseling and helps to arrange campus interviews for students with prospective employers who visit the campus throughout the year.

Costs



(All university fees are subject to change without notice by the State Board of Regents.)

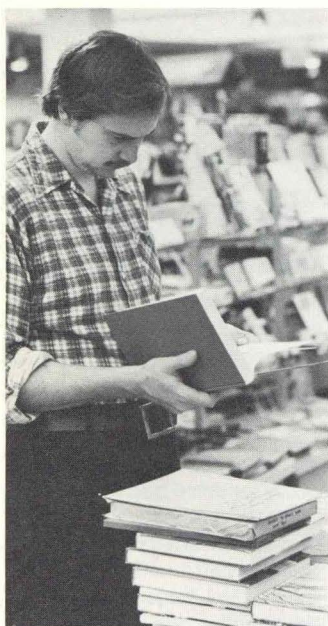
Fees and expenses include tuition, room and board (for students living in university residence halls), an estimated allowance for books and supplies, and an estimated allowance for miscellaneous living expenses. Costs for the 1982-83 academic year are:

	Iowa Resident	Non-resident	Resident Vet Med	Nonresident Vet Med
Tuition	\$1,040	\$2,580	\$2,300	\$4,800
Room and board	\$1,762	\$1,762	\$1,762	\$1,762
Books and supplies (est.)	\$330	\$330	\$330	\$330
Miscellaneous (clothing, transportation, Sunday evening meals, personal expenses)	1,168	1,168	1,168	1,168
Total	\$4,300	\$5,840	\$5,560	\$8,060

Tuition covers laboratory course expenses, membership in the Memorial Union, subscription for student publications, and partial admission to athletic events, concerts, and lectures in addition to covering the cost of enrolling as a full-time student.

Expenses payable directly to Iowa State University (including tuition and room and board) must be paid within the first week of classes during the regular school year. Payments for the summer sessions must be paid within the first two days of classes.





Statement and other information requested by the Financial Aid and Student Employment Office. Incomplete applications may result in necessary but time-consuming follow-up procedures.

2. Neglecting to promptly forward all three copies of the Student Aid Report from the Pell Grant Program to the Financial Aid and Student Employment Office.

3. Neglecting to return the award letter noting acceptance of your award. If the award letter is not returned by the reply date indicated, the Financial Aid and Student Employment Office may withdraw the award on the assumption that it is not wanted.

4. Neglecting to enclose the processing fee.

5. Neglecting to file the Family Financial Statement before March 1.

Scholarships

Students are also encouraged to look into sources of financial assistance which are not based on financial need. Scholarships are among the possibilities for students, and they may be awarded for a wide variety of reasons. There are many types of organizations which provide scholarship funds. These include ISU academic departments, local community groups, local businesses and agencies, and national associations.

You are encouraged to contact these potential sources early; if you are selected for a scholarship please notify the Financial Aid and Student Employment Office in writing of the source and dollar amount of the award. Listed below are some helpful hints about searching for a scholarship.

1. Start with your own department. If you have declared a major, check with the college dean's office or the department chairperson concerning available merit scholarships.

2. Contact any organizations you or your family belongs to. Groups which have funds to award usually decide on the recipient(s) in the spring.

3. The ISU Financial Aid Office has several reference books which students may use in the office for information and addresses.

4. The ISU library and other large local libraries should have resource books in their reference sections which list national organizations that award scholarships.

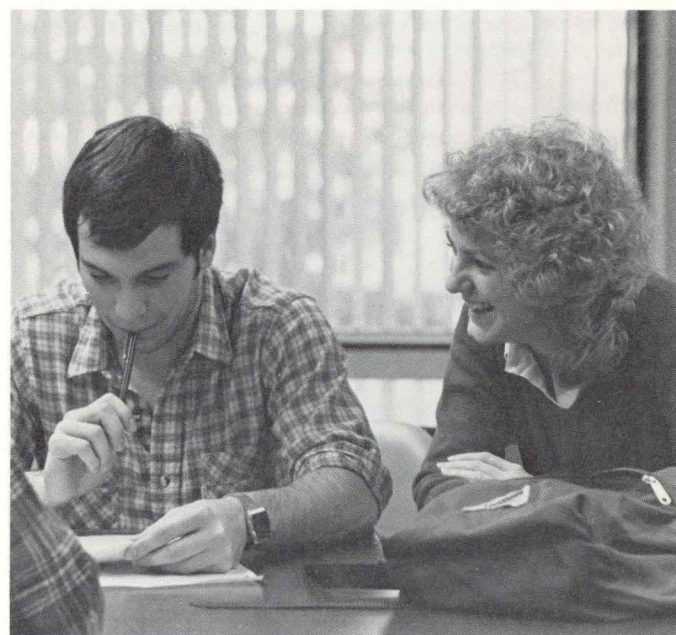
University short-term loans

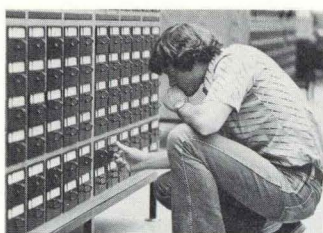
Students wishing to distribute the costs of attending the university throughout the semester may obtain a short-term loan from the Financial Aid and Student Employment Office. These loans, which are available at the beginning of each semester and are due by the end of the same semester, are limited to the amount of tuition, fees, and room and board assessed by the university plus \$150 for books. Any other financial assistance a student receives will be subtracted from these maximums. Interest on these loans is one percent per month (or 12 percent per year) on the unpaid balance of the loan.

For more information

For additional financial aid information, write or visit the Financial Aid and Student Employment Office, 12 Beardshear Hall, Iowa State University, Ames, Iowa 50011; or telephone 515-294-2223 or one of the toll-free numbers on page 22.

Financial aid applications are processed without regard to age, color, handicap (mental or physical), national origin, race, religion, sex, or status as a disabled veteran or veteran of the Vietnam era. All state and federal aid programs are subject to review by their respective governing agencies, and may be changed without notice.





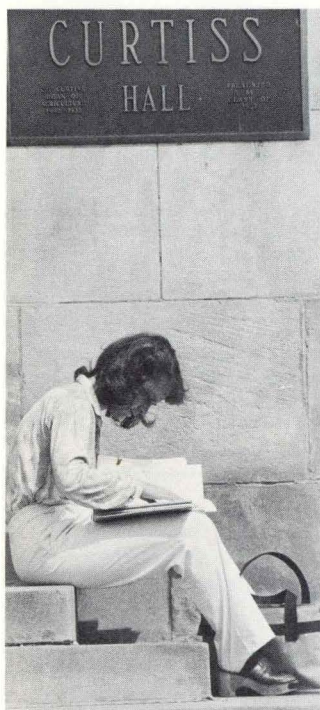
Undergraduate study is offered by the colleges of Agriculture, Design, Education, Engineering, Home Economics, and Sciences and Humanities, and by the School of Business Administration. Professional study is offered by the College of Veterinary Medicine. In addition, the Graduate College provides an opportunity for advanced study and enriches the overall academic atmosphere through educational exchange and contact with undergraduate areas of the university.

The programs in each college are designed to develop your general educational background as well as specialized knowledge in your chosen field. You will be encouraged to plan an individualized program to suit your interests, abilities, and goals.

before making a commitment to a major. If you find yourself in this position, you may enroll in the colleges of Agriculture, Design, Education, Engineering, Home Economics, or Sciences and Humanities without declaring a major upon admission.

It is not uncommon for students to begin their college education without formally declaring a major. Some students need or want the opportunity to explore and experience academic offerings

College of Agriculture



The College of Agriculture prepares students for a wide range of career opportunities that relate to land use. Agriculture is concerned with use of land for forests and recreation, and for producing food as well as ornamental plants. The student who likes to work with plants or animals will find an agricultural career rewarding.

The facilities for scientific and technological education at Iowa State are among the finest to be found in the world. Many world-famous scientists are among the faculty of the College of Agriculture.

Most of the curricula in the College of Agriculture do not require a farm background, nor do they require farm experience before graduation. However, the

farm experience is a valuable asset for students planning to study agriculture.

You may choose a curriculum as you apply for admission or simply indicate General Agriculture. A degree in General Agriculture is not offered, however. It is the classification used for undeclared majors.

Curricula

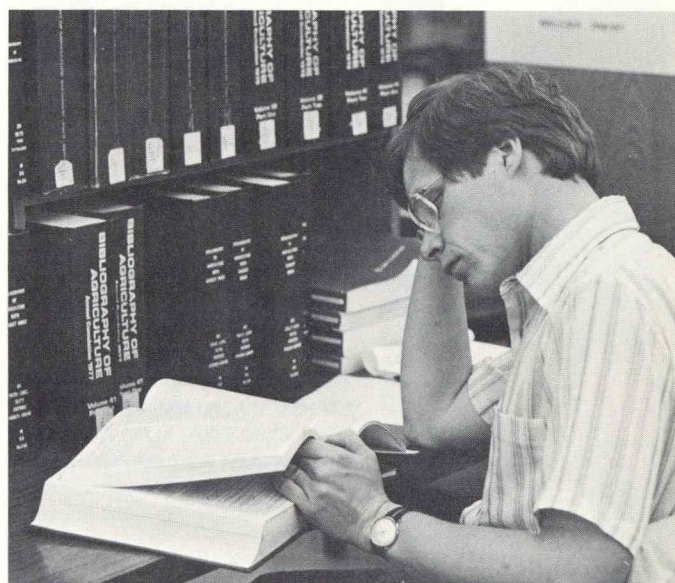
- Agricultural Biochemistry
- Agricultural Business
- Agricultural Education
- Agricultural Extension Education*
- Agricultural Journalism
- Agricultural Mechanization
- Agronomy
- Animal Ecology
- Animal Science
- Biometry
- Dairy Science

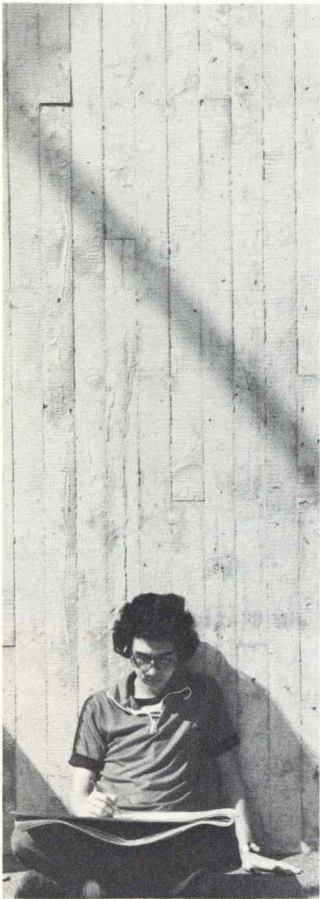
- Entomology
- Farm Operation
- Fisheries and Wildlife Biology
- Food Technology
- Forestry
- Horticulture
- International Agriculture*
- International Studies*
- Pest Management*
- Plant Pathology
- Public Service and Administration in Agriculture
- Seed Science*

*Offered only as a secondary major in a double major program

Nondegree programs

- General Agriculture
- Farm Operation 2-Year Program
- Farm Operation Winter Program
- Preveterinary Medicine





The College of Design provides the student with an opportunity to develop a sensitivity to design and the skills necessary for professional competence. Established July 1, 1978, the college consists of the Departments of Architecture, Art and Design, Community and Regional Planning, and Landscape Architecture.

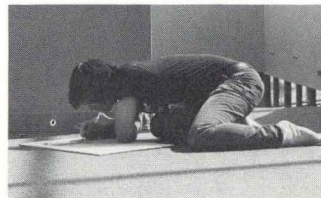
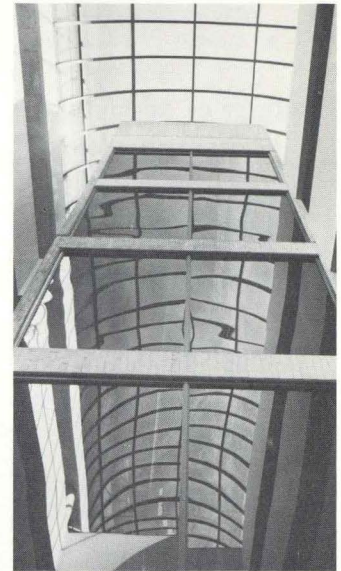
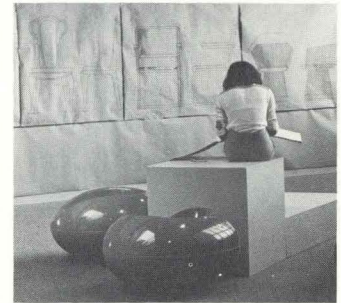
The college is housed in an impressive facility designed to encourage student interaction and creativity. Here students are prepared for a wide range of professional design roles as they participate in classroom and studio activities, view exhibitions of student and professional work, engage in discussions with professional practitioners, and carry out field studies.

Graduates of the College of Design are employed in commercial and private firms, industry, government, and education. Pro-

grams of study in the college prepare students for careers in architecture, landscape architecture, environmental design, interior design, city and regional planning, advertising design, merchandising, and teaching. Employment as a museum or art program director, crafts director, or studio artist are among the many other career possibilities.

Curricula

- Advertising Design
- Architecture
- Art and Design
- Art Education
- Community and Regional Planning
- Craft Design
- General Art
- Interior Design
- Landscape Architecture



College of Education



The College of Education offers courses for all undergraduate students seeking teacher certificates for the elementary and secondary schools and for several professional non-teaching programs.

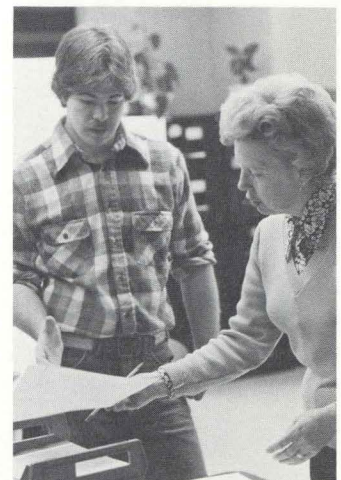
A prospective professional educator must have an understanding of people, teaching, and learning as well as skill in applying such understanding in the classroom or in a professional position.

Nearly one out of five students who graduate from Iowa State is certified to teach in elementary or secondary schools. Students enrolled in teacher education will student-teach during their senior year; however, opportunities for pre-student-teaching classroom experiences begin in the freshman year and are available during each academic year.

If you plan to teach agriculture, art, or home economics, you should enter the respective college (Agriculture, Design, or Home Economics). You should enroll in the College of Sciences and Humanities if you plan to teach in one or more of the following fields: biology, chemistry, earth science, English, foreign languages, general science, history, journalism, mathematics, music, physics, political science, psychology, social studies, speech.

Each year approximately 82 percent of the graduates who teach go directly into the public schools of Iowa. However, graduates of the College of Education are teachers in educational institutions from California to Florida, from Australia to Africa and India.

- Curricula**
- Elementary Education
 - Industrial Education
 - Leisure Studies
 - Physical Education





The engineer occupies a uniquely important position in our modern civilization. He or she has the responsibility for taking the discoveries of basic science and translating them into products, structures, facilities, and services for the use of mankind.

Graduates of the College of Engineering are in high demand in today's job market. The problems they work on are varied: development of more efficient engines, improved transportation systems, communication systems, increased industrial productivity, development and use of new sources of energy, development of our water and other natural resources. If any of these or related engineering areas interest you, you should consider the College of Engineering.

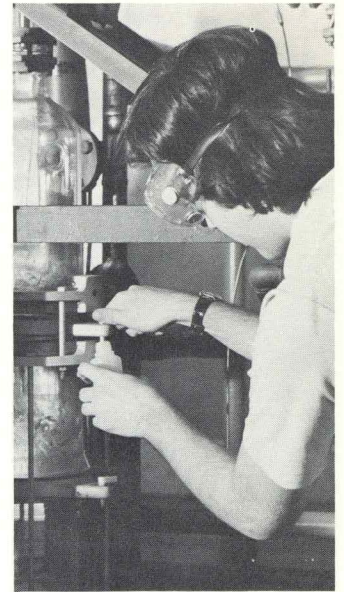
The curricula in engineering provide a balanced program in mathematics, basic sciences, engineering sciences, engineering design, social sciences, and hu-

manities. This content is consistent with recommendations of the Accreditation Board for Engineering and Technology, the national engineering accrediting agency.

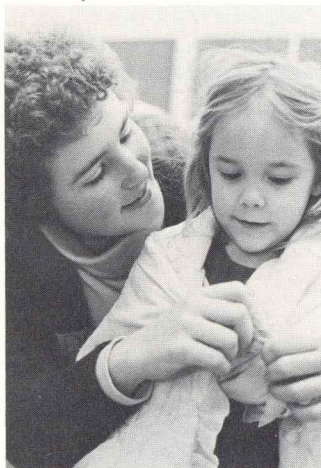
You may choose a particular curriculum, or you may enter the Department of Freshman Engineering as an undeclared student for your first year.

Curricula

- Aerospace Engineering
- Agricultural Engineering
- Ceramic Engineering
- Chemical Engineering
- Civil Engineering
- Computer Engineering
- Construction Engineering
- Electrical Engineering
- Engineering Operations
- Engineering Science
- Industrial Engineering
- Mechanical Engineering
- Metallurgical Engineering
- Nuclear Engineering
- Surveying



College of Home Economics



The times are changing and home economics is changing with the times. Today, home economists work in business, government, research, education, and public service.

Job placement in the College of Home Economics is high. Graduates meet the challenges in areas such as consumer behavior, food product development, day care center operations, nutrition research, hotel or restaurant management, communication, education, retail management, fashion design, and financial management. Health, social service, and recreation organizations employ home economists as specialists in nutrition, child, family, and consumer concerns.

You may enter the College of Home Economics as an open option or undeclared student or you may select a specific curriculum from the listing below.

Curricula and options

Child Development

- Child, Parent, and Community Services
- Growth and Development of Children
- Teaching Prekindergarten-Kindergarten Children

Family Environment

- Family Resource Management
- Family Services
- Housing and the Near Environment

Food and Nutrition

- Community Nutrition
- Dietetics
- Food Science
- Nutritional Science

Home Economics Education

- Adult Home Economics Education
- Home Economics Education

Home Economics Journalism

- Home Economics Journalism

Home Economics Studies

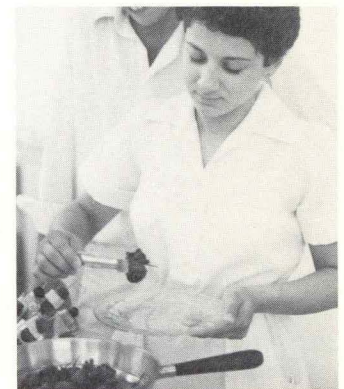
- General Studies in Home Economics
- International Studies in Home Economics

Institution Management

- Foodservice Management
- Hotel and Restaurant Management

Textiles and Clothing

- Apparel Design and Patternmaking
- Fashion Merchandising
- Textiles and Clothing Related Science





The College of Sciences and Humanities offers study opportunities in the arts, humanities, natural sciences, mathematical disciplines, and social sciences. Here, you as a student may acquire knowledge of the physical universe that surrounds us, the biological world of which we are a part, our individual nature, and the nature of human society. Emphasis is placed upon acquiring a broad modern liberal arts appreciation for human culture and the stuff of which it is composed. We are also concerned that our students develop their abilities to reason and communicate at a level appropriate for a world which grows increasingly complex and challenging.

Iowa State won early national recognition for strength in the basic sciences and recently gained recognition for excellent programs in the social sciences and humanities. Graduates of the college work in every possible arena—business, industry, government, and education—and career development is an important part of the programs in the College of Sciences and Humanities.

If you select a major and plan to teach in a secondary school, you may enroll in this college and take courses for certification in the College of Education.

You may indicate a specific major or program, or you may enter the college as an Open Option student without declaring a major. Career planning courses and programs are available to assist Open Option students in their search for majors.

If you want a preprofessional program, you have several options. If your interest is in human medicine, veterinary medicine, or law, you may enter as a Premed, Prevet Med, Prelaw, or Open Option student and later declare a major. For other preprofessional interests, you may enter in a major or as an Open Option student.

A School of Business Administration has been established at Iowa State. This school combines a variety of business-related curric-

ular offerings under a single administrative unit in the College of Sciences and Humanities.

Majors

Biological sciences

Biochemistry
Biology
Biophysics
Botany
Microbiology
Zoology

Business Administration

Accounting
Business Administration
Finance
Management
Marketing
Transportation/Logistics

Communication

English (Composition)
Journalism and Mass
Communication
Speech (Communicative Arts)

Humanities

English
French
German
History
Music (Bachelor of Arts degree)
Philosophy
Russian
Spanish
Speech (Dramatic Arts)

Mathematical disciplines

Computer Science
Mathematics
Statistics

Physical sciences

Biophysics
Chemistry
Earth Science
Geology
Metallurgy
Meteorology
Physics

Social and behavioral sciences

Anthropology
Economics
Political Science
Psychology
Sociology

Other majors

Distributed Studies*
Environmental Studies**
Individual Major*
International Studies**
Music (Bachelor of Music degree)
Naval Science

Preprofessional programs

Cytotechnology
Dentistry
Human Medicine
Law
Medical Technology
Nursing
Optometry
Physical Therapy
Physician's Assistant
Social Work
Speech-Language Pathology
and Audiology
Theology
Veterinary Medicine

Nondegree programs

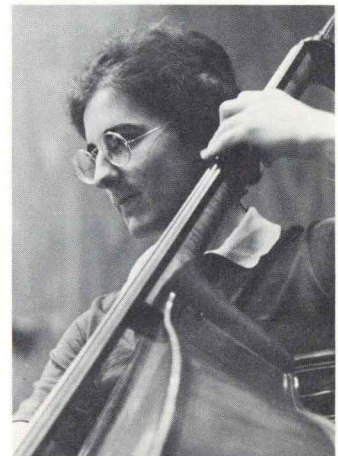
Dental Hygiene
Pharmacy

Other programs

Air Force Aerospace Studies
American Indian Studies
Classical Studies
Linguistics
Military Science
Naval Science
Religious Studies
Teacher Education
Women's Studies

*If your educational goals are broader or more diverse than can be best served by one of the regular majors, you may want to consider a Distributed Studies or Individual Major after your first year. Your adviser can help you prepare an application statement.

**Available as second majors only. Students must be enrolled at Iowa State before applying for enrollment in these programs.



College of Veterinary Medicine



Today's veterinarian works in all areas of animal and public health—in private practice, research in government and industry, teaching, military, and public health service.

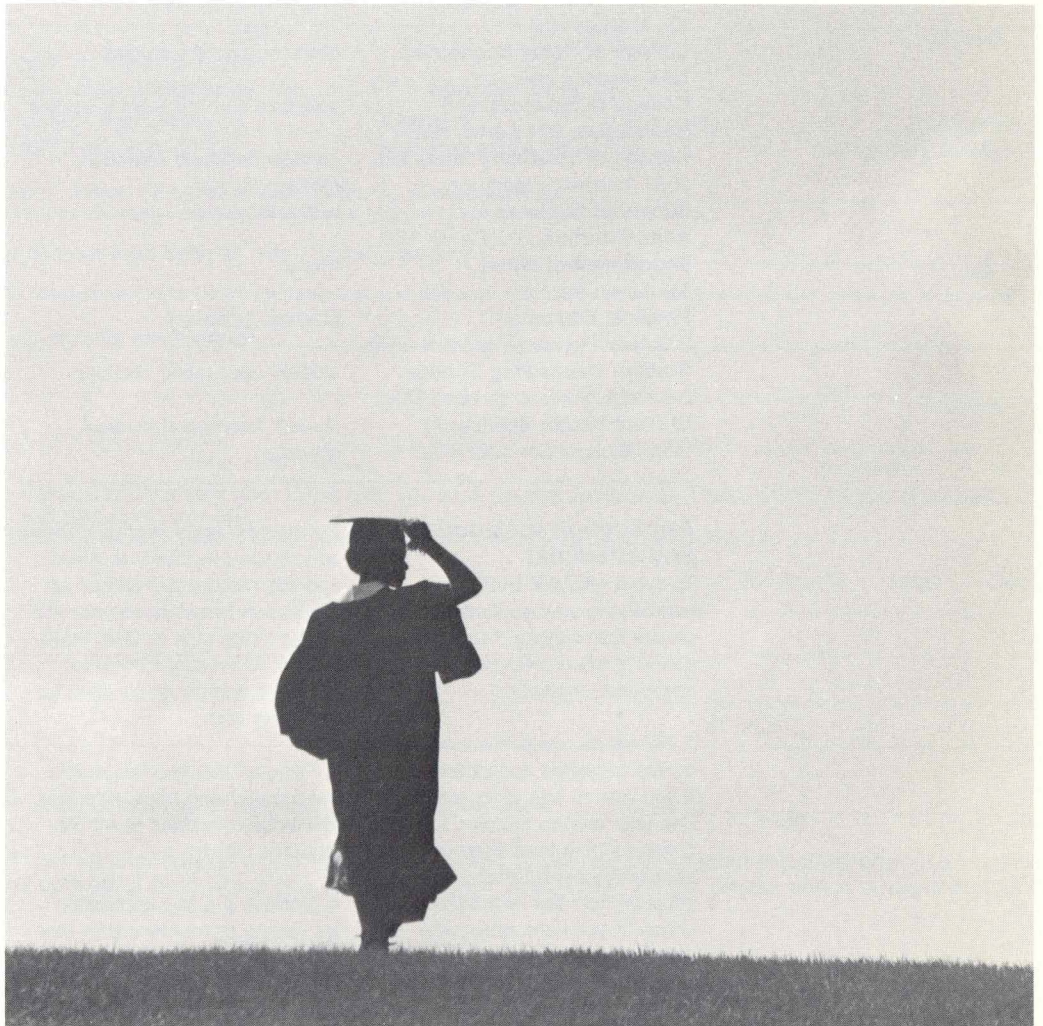
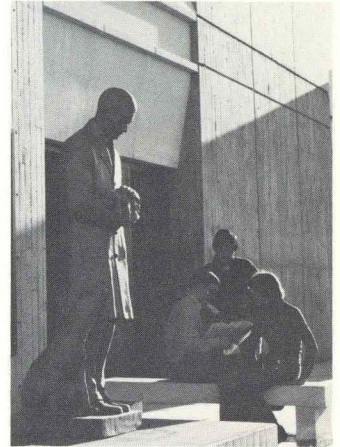
Preveterinary students enroll in the College of Agriculture or in the College of Sciences and Humanities. The curriculum requires 60 semester credits of preveterinary study and four years in the professional curriculum. You may combine a three-year preveterinary program with selected courses in the veterinary curriculum to earn a bachelor of science degree in the College of Agriculture or the College of Sciences and Humanities. In addition, concurrent DVM-graduate degree programs are open to qualified students.

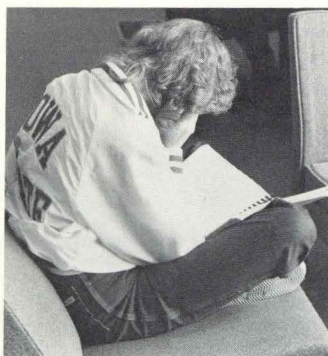
Admission to the College of Veterinary Medicine is limited and on a selective basis. Your performance in preveterinary study, general achievement, and admissions test scores will be considered by the admissions committee. Studies in the professional curriculum begin in the fall semester only.

Residents of Iowa and certified residents of states having contracts with Iowa State for educating students in veterinary medicine have the best opportunities for admission into the college. If you are not a resident of Iowa or of a contract state (currently Nebraska, North Dakota, and South Dakota), you may wish to contact the College of Veterinary Medicine regarding your chances of admission.

Departments

Veterinary Anatomy
Veterinary Clinical Sciences
Veterinary Microbiology and Preventive Medicine
Veterinary Pathology
Veterinary Physiology and Pharmacology





Call toll-free

Questions about admission? financial aid? housing? program of study? You can call the Admissions Office toll-free from anywhere in Iowa (1-800-262-3810) or from outside Iowa in the continental U. S. (1-800-247-3965).

Where to inquire. . .

- Admissions Office,**
7 Beardshear Hall
- Department of Residence,**
1215 Friley Hall
- University Student Apartments Office,** 100 University Village
- Off-Campus Housing,**
1212 Friley Hall
- Financial Aid and Student Employment Office,**
12 Beardshear Hall
- Office of Student Life,**
2nd Floor, Student Services Bldg.
- Minority Student Affairs,**
301 Beardshear Hall
- Greek Affairs Adviser,**
2nd Floor, Student Services Bldg.
- Military Science,** 132 Armory
- Air Force Aerospace Studies,**
146 Armory
- Naval Science,**
130A Naval Armory
- College of Agriculture,**
122N Curtiss Hall
- College of Design,**
134 College of Design Bldg.
- College of Education,**
E262 Quadrangle
- College of Engineering,**
104 Marston Hall
- College of Home Economics,**
121A MacKay Hall
- College of Sciences and Humanities,** 204 Carver Hall
- College of Veterinary Medicine,**
2503 Veterinary Medicine
- School of Business Administration,** 310 Carver Hall
- Department of Music,**
149 Music Hall
- Physical Education**
232 New Physical Education Bldg.
- Student Counseling Service,**
3rd Floor, Student Services Bldg.
- Student Health Service,** 1st Floor, Student Services Bldg.

for information about:

- admission, application for admission, general information
- housing in residence halls
- housing in university-owned apartments
- privately-owned housing
- financial aid, student employment
- extracurricular activities, social life, religious organizations
- minority student programs and activities
- sororities and sorority rushing, fraternities and fraternity rushing
- Army ROTC
- Air Force ROTC
- Naval ROTC, Marine ROTC
- agricultural studies
- design studies
- education, teacher education and certification
- engineering studies
- home economics studies
- sciences and humanities studies
- preveterinary and veterinary medical studies
- business studies
- music
- physical education
- student counseling services
- student health and medical services

Hall, Iowa State University, Ames, Iowa 50011.

5. Instructions related to sex, handicap, and racial/ethnic information (items 6, 7, and 8 on the application): Responses to these requests for information are not required. Responses are requested in order for Iowa State University to comply with federal reporting requirements. This information will be kept confidential and will be used only for statistical reporting and on a need-to-know basis.

All U.S. citizens and permanent resident aliens (noncitizens who have been lawfully admitted for permanent residence and who hold a "green card" Form I-151) are requested to check one of the first five categories. Nonresident aliens should check the "nonresident alien" category.

Please note the following definitions before responding.

American Indian or Alaskan Native: A person having origins in any of the original peoples of North America, and who maintains cultural identification through tribal affiliation or community recognition.

Black, not of Hispanic Origin: A person having origins in any of the black racial groups of Africa.

White, not of Hispanic Origin: A person having origins in any of the original peoples of Europe, North Africa, or the Middle East.

Asian or Pacific Islander: A person having origins in any of the original peoples of the Far East, Southeast Asia, the Indian Subcontinent, or the Pacific Islands. This area includes, for example, China, Japan, Korea, the Philippine Islands, and Samoa.

Hispanic: A person of Mexican, Puerto Rican, Cuban, Central or South American, or other Spanish culture or origin, regardless of race.

Nonresident alien: A person who is not a citizen of the United States and who is in this country on a temporary basis and does not have the right to remain indefinitely.

Application instructions and checklist

To avoid errors or delays in considering your application, please follow these instructions carefully when preparing your application materials:

1. Fill out all required information on the furnished application form. If you plan to attend for less than one year and do not plan to earn a degree from Iowa State, you should request a Special Application from the Admissions Office. If you have previously attended Iowa State as a regular undergraduate student in a degree program, you should request a Reentry Application.

2. Only one application is necessary. If you previously received and submitted a pre-printed application in response to your ACT scores being sent to Iowa State, it is not necessary for you to complete another application for the same term.

3. Request that your academic transcript(s) and applicable test results be forwarded to the Admissions Office.

4. Enclose the \$10 application fee (check or money order—not cash) with the completed application form and mail to: Admissions Office, 7 Beardshear

application for undergraduate admission

Iowa State University | Ames, Iowa 50011

Please tear here

1. Name _____
(last) (first) (middle) (other last names used)

2. Social Security number _____ Telephone number _____
(area code) (number)

3. Permanent home address _____
(number & street) (city) (state) (zip code)
(county) How long have you lived at your home address? _____
(years) (months)

4. Present address _____
(if different from above) (number & street) (city) (state) (zip code)

5. Country of citizenship _____ Type of visa (if not a U.S. citizen) _____

6. Sex: Male Female Birth date _____ Church preference _____
(month) (day) (year) (Response not required—requested by local churches)

7. Racial/ethnic information (Optional—see instructions for explanation of categories.) American Indian or Alaskan Native Black (not Hispanic) White (not Hispanic) Asian or Pacific Islander Hispanic (Spanish American) Nonresident alien Prefer not to respond

8. Do you have any physical or health limitations of which we should be aware so that the university may provide you with any assistance you might desire? Yes No If yes, please explain _____

(The above information is voluntary; no adverse treatment will result for failure to respond. Its purpose is to allow the university to carry out a voluntary program to overcome the effect of conditions which might result in limited participation by handicapped persons. It will be kept confidential and used in accordance with 45 CFR 84.)

9. Name of parent legal guardian other relative _____
(check one) (last) (first) (middle)

10. Address _____
(number & street) (city) (state) (zip code)

11. Please indicate the term and year you wish to enter:
 Fall Semester, 19 ____ Spring Semester, 19 ____ Summer Term, 19 ____

12. Which college do you wish to enter? Agriculture Design Education Engineering
 Home Economics Sciences and Humanities Veterinary Medicine

13. If you have selected a curriculum, major, or general area of study, please indicate: _____
(Please refer to the Colleges and Curricula section of this booklet for information concerning programs of study in the college of your choice.)

14. Will you or have you graduate(d) from high school? Yes No When? _____
(month) (year)
(Please arrange to have an official high school transcript sent to our office if you are applying as a freshman or if you are a transfer applicant with less than one full year of college credit.)

High school from which you will or have graduate(d) _____

Address _____
(number & street) (city) (state) (zip code)

15. Have you or will you take the ACT? Yes No SAT? Yes No If yes, when? _____
(Either may be submitted.) (month) (year)

16. Will you have attended another college or university prior to the date you wish to enter Iowa State? Yes No If yes, give names and dates of all schools attended and degree(s) earned.
(Please request that each college send an official transcript to our office. Incomplete information may result in denial of this application or dismissal.)

Name	City	From: month	year	To: month	year	Degree

17. If you are presently enrolled in another college or university, when will you leave? _____
(month) (year)

18. Have you ever been dismissed from another college or university? Yes No If yes, please attach a separate letter of explanation.
 19. Are you eligible to return to the college(s) from which you are transferring? Yes No If no, please attach a separate letter of explanation.

20. Have you applied for admission to Iowa State University before? Yes No If yes, for what term? _____

21. Have you ever attended Iowa State University? Yes No If yes, when _____

22. If you are presently enrolled in high school or college, please list the courses you are now taking and any additional courses you plan to complete prior to your entry at Iowa State. High school courses should be listed by subject and number of semesters or quarters they will be taken. College courses should be listed by name, number, and semester or quarter credits.
(Your schedule will be planned according to your transcript and this list; therefore, it is important for this information to be accurate. Please notify us immediately if you make any changes.)

Course name	Course number	Sem./qtr. credits
<i>High School Example: Sr. Math (Anal. Geom/Calc)</i>	—	<i>First and second semesters</i>
<i>College Example: Western Civilization</i>	<i>History 301</i>	<i>4 semester credits</i>

(Please attach an additional sheet if necessary.)

23. Give a complete chronological statement covering the period from your high school graduation until your proposed entry date at Iowa State. This should include approximate dates, type of activity, and city and state. If you graduated from high school more than two years ago, you need to list activities only for the two-year period immediately preceding your proposed entry at Iowa State.

(from)	Dates (to)	Activity (employment, education, etc.)	City and State

24. Do you wish to receive information concerning ROTC at Iowa State? Yes No If yes, for which program:
 Air Force Army Navy (includes Marines)

25. Admission to the university does **not** guarantee you housing, and all students are expected to make their own housing arrangements. If you wish to receive information about university housing, please check: Yes No If yes, single or married

26. If you are admitted, do we have your permission to release your high school rank in class to university recognized organizations or activities for membership selection purposes? Yes No

I certify that all statements in this application are complete and true.

Signature of applicant _____ **Date** _____

This application must be accompanied by a \$10 check or money order payable to Iowa State University. Please do not send cash by mail.

**The application and all required transcripts should be sent to: Admissions Office
 7 Beardshear Hall
 Iowa State University
 Ames, Iowa 50011**

Iowa State University information request card

name (please print) _____ date _____

street _____ city _____ state _____ zip _____

high school _____

college or university (for transfer students) _____

Please send me the following information:

Curriculum information _____ (Please specify curriculum)

Other _____

If mailing card from outside the U.S.A., please use envelope.

"Stay A Day at ISU" preregistration card

(Please read the "Stay A Day" paragraph in the section on "admission" before returning card.)
This card is good for only one person and must be received in the Admissions Office two weeks prior to your visitation date.

name _____ male _____ female _____ (please circle one)

present address _____ telephone _____

city _____ state _____ zip _____

Please circle the academic year you are currently in: High School 10 11 12 College 1 2 3 4

I will be coming _____ by myself _____ with a friend _____ (Your friend must submit his/her own card.)
 (friend's name)

I am interested in majoring in _____

I would like to attend "Stay A Day" on the following date (please circle **one**):

October 12, 1982	November 16, 1982	February 15, 1983	April 26, 1983
November 2, 1982	February 1, 1983	March 1, 1983	

I would like for you to arrange overnight housing for me.

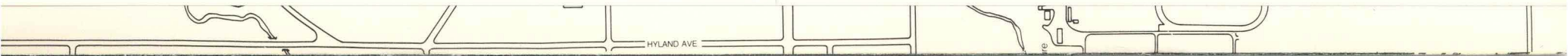
I have made my own arrangements for overnight housing.

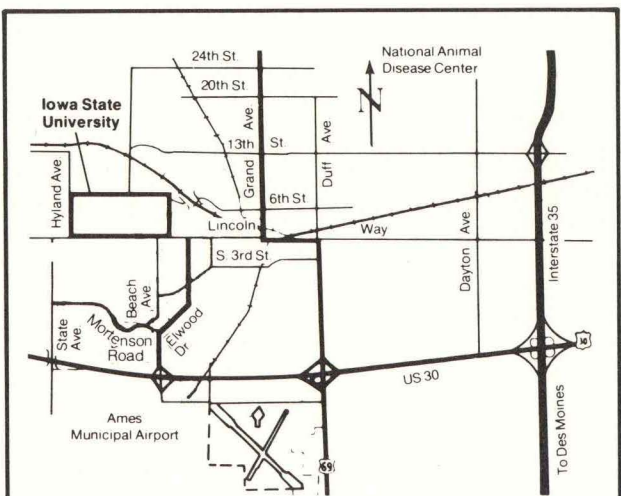
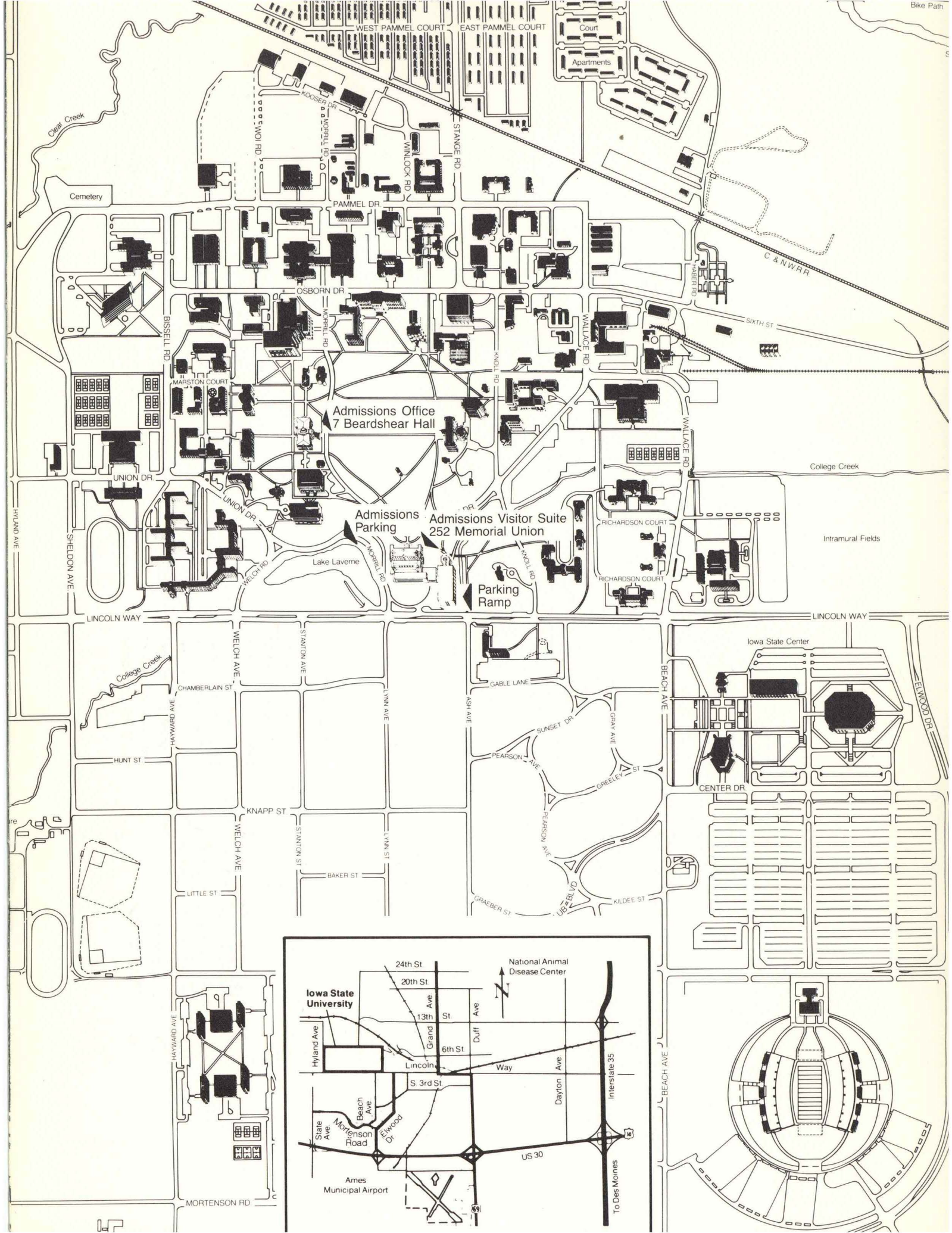
FOR OFFICE USE ONLY _____ card sent
 _____ letter sent

High school students must obtain the following signatures:

parent's signature _____

counselor's or principal's signature _____





How to reach Iowa State University

If you are visiting Iowa State University for the first time, the following directions may help you locate the campus. A detailed map of the campus appears to the left.

By car

From Interstate 35, take the exit labeled "Iowa State University/ Highway 30." Proceed west on Highway 30 to the second Ames exit, labeled "Elwood Drive/ISU." From there, proceed north on Elwood Drive past the football stadium and the Iowa State Center to Lincoln Way Avenue, then take Lincoln Way Avenue west to campus.

By plane

The Des Moines Municipal Airport is serviced by United, TWA, Ozark, Mississippi Valley, and Republic commercial airlines as well as American Central commuter airline. Visitors to the campus planning arrival by plane should note the availability of a public commuter bus service to and from the campus and the Des Moines Airport at very reasonable rates.

By bus

Ames is served by Jefferson and Greyhound bus lines.

Visitors to the campus

Visitors to Iowa State University are always welcome.

The Admissions Office, located in 7 Beardshear Hall, is open Monday through Friday from 8 a.m. to 5 p.m. Admissions counselors are available to speak with prospective transfer students about admission, financial aids, housing, student life, and academic programs and opportunities. If you would like to talk with a faculty adviser or visit a

departmental office during your campus visit, arrangements usually can be made upon your arrival in the Admissions Office. However, if you wish to make an appointment in advance, please feel free to call our toll-free number, and we will transfer your call to the appropriate department.

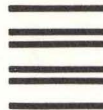
Student-guided tours of the campus are offered each weekday throughout the regular academic year at 10 a.m. and 2 p.m., Monday through Friday. Tours are not offered during vacation, holiday, and exam periods.

A weekday visit is preferable since most campus offices are closed on Saturday mornings and all university offices are closed on Saturday afternoons, Sundays, evenings, and legal holidays. If Saturday is the only convenient time for your visit, then the Admissions Office is open from 9 a.m. to 12 noon.

Parking

Visitor parking is available in the Memorial Union parking ramp, which is adjacent to Lincoln Way Avenue and east of Lake Laverne. (Lake Laverne is on the south edge of central campus.) You may also park in one of the four reserved spaces marked "Admissions Office Visitor Parking" on Union Drive bordering the north side of Lake Laverne. Cars parked in this zone must display a special dated permit. If you do not obtain this parking permit in advance of your visit, you may park in this zone when you arrive on campus, but you should then walk immediately to the Admissions Office in 7 Beardshear Hall and obtain a dated permit to place in the rear window of your car.

P-360



No postage
necessary
if mailed
in the
United States

BUSINESS REPLY CARD
FIRST CLASS PERMIT NO. 675 AMES, IOWA

Postage will be paid by addressee

**iowa state
university**

ISU Mail Center
Ames, Iowa 50011

P-360



No postage
necessary
if mailed
in the
United States

BUSINESS REPLY CARD
FIRST CLASS PERMIT NO. 675 AMES, IOWA

Postage will be paid by addressee

**iowa state
university**

ISU Mail Center
Ames, Iowa 50011

Admissions Office
7 Beardshear Hall
Iowa State University
Ames, Iowa 50011

information and application for prospective transfer students