

AUG 17 1982

LD  
2547  
.A75  
1982

# Iowa state university

information and application for prospective minority students 1982/83



STATE LIBRARY OF IOWA  
 Historical Building  
 DES MOINES, IOWA 50319



# contents

---

<b>2 iowa state university</b>	3 Academic reputation	5 A cultural feast
	3 Iowa State's heritage	6 Housing
	3 Iowa State today	7 A beautiful campus
	4 Sports and recreation	8 The students

---

<b>9 information for prospective minority students</b>	9 Admission	15 Student services
	10 Other academic information	15 Special programs
	12 Recommended high school preparation	17 Costs
	13 Housing	18 Financial aid programs

---

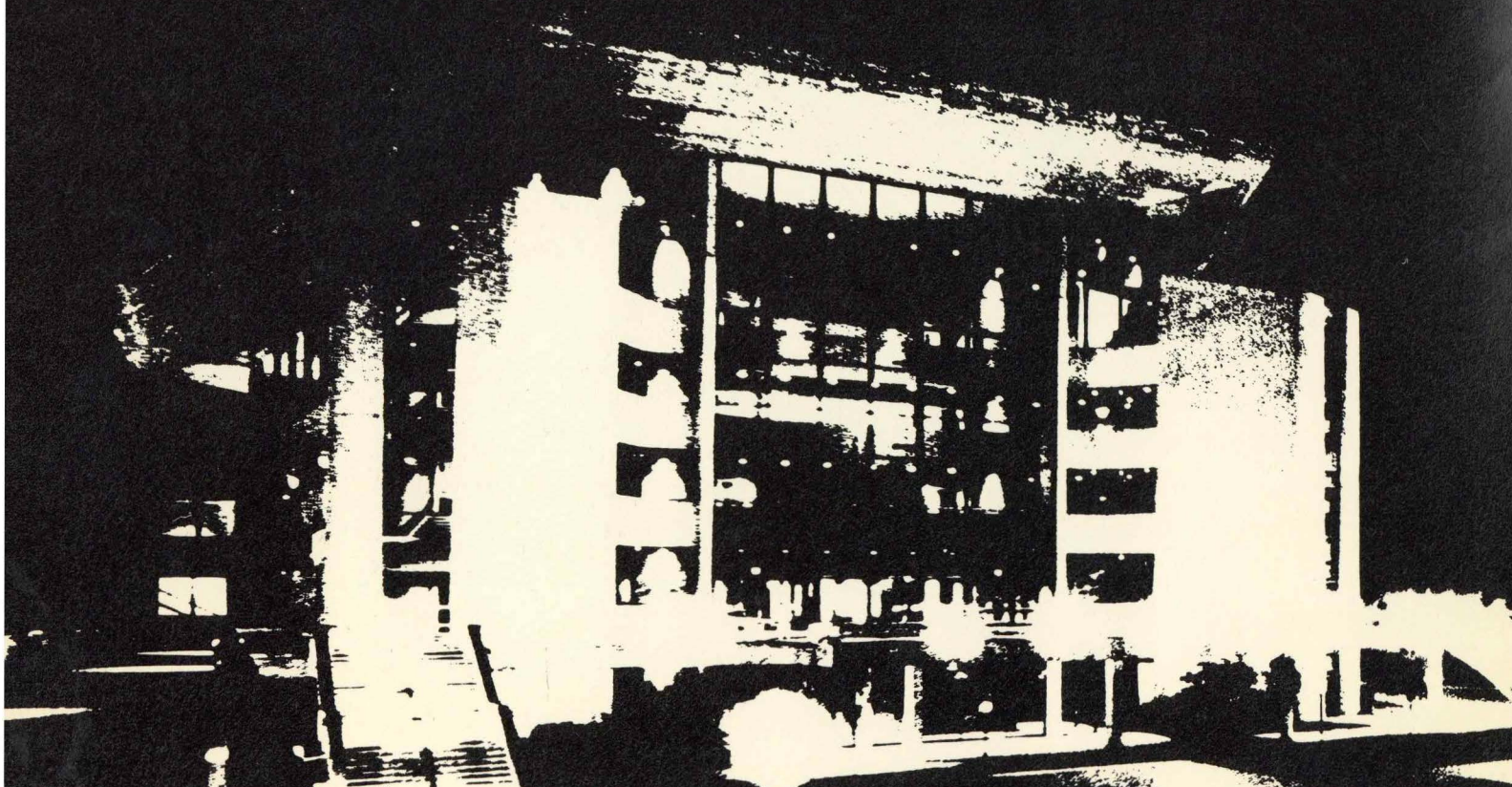
<b>21 colleges and curricula</b>	21 College of Agriculture	23 College of Home Economics
	22 College of Design	24 College of Sciences and Humanities
	22 College of Education	25 College of Veterinary Medicine
	23 College of Engineering	

---

## 26 for more information

**Application form** at back of booklet

**Visits to the campus.** Please review the campus map inside the back cover for directions to admissions offices, parking instructions, and office hours.





# academic calendar

---

## spring semester 1983

Registration (new students report)	January 17
Classes begin	January 19
Commencement	May 21

---

## summer session 1983

Summer session registration (new students report)	June 6
Classes begin	June 7
Summer session commencement	July 30

---

## fall semester 1983

Registration (new students report)	August 22
Classes begin	August 24
Commencement	December 17

---

## spring semester 1984

Registration (new students report)	January 16
Classes begin	January 18
Commencement	May 19

---

## summer session 1984

Summer session registration (new students report)	June 11
Classes begin	June 12
Summer session commencement	August 4

---

Iowa State University is committed to the concept and practice of affirmative action and does not discriminate on the bases of age, color, creed, handicap (mental or physical), national origin, race, religion, sex, or status as a disabled veteran or veteran of the Vietnam era.







You are about to make some of life's most important decisions—**what** you want to do with your life, with **whom** you want to live your life, the **kind** of life you want to live.

Big decisions? Some of your biggest.

You could be making those decisions in an atmosphere of challenge, fun, and mind-stretching experiences where you meet exciting new people and see opportunities you never knew existed.

There is a place where you can explore anything from cello to TV advertising, laser beams to social work, aerospace engineering to wildlife management, teaching and research to building bridges or designing homes, scientific food production to economics, politics to business.

Does this sound like it is a place for everyone?

It **is** the place for the discriminating and thoughtful young man and woman. Year after year it is the choice of **more** high school seniors than any other college or university in Iowa, but it is **particularly** the choice of young people seriously interested in obtaining sound, first-rate educational opportunities in exciting circumstances. Its scholarship is internationally known. Its degrees are solid marks of achievement. It's the place graduates fondly recall as part of "the best years of my life."

It's Iowa State University.

Going to college is living, learning, growing, working hard, having fun, discovering who you really are, being "on your own."

Here are some of the things you will find when you choose to spend those all-important years at Iowa State.

**Application for admission is in the back of this booklet.**



## Academic reputation



Iowa State's reputation as an institution of academic excellence unquestionably exceeds its other fine attributes. Very simply, it is known as a "good school." Persons attending Iowa State are looked to with respect. They are serious scholars.

The classroom education you will gain at Iowa State will be enhanced and made more meaningful by exposure to lectures, plays, concerts, sports, and the sheer stimulation of being challenged by other students with goals and aspirations for success.

But the essence of what college is all about is the excellence to be found in its classrooms, lecture halls, and laboratories. Iowa State's reputation in this area needs little elaboration.

## Iowa State's heritage

Iowa State's earliest courses in homemaking, mechanics, and farming have grown into internationally respected colleges of Home Economics, Engineering, Agriculture, and Veterinary Medicine. (Recently, the top scholar in the College of Veterinary Medicine was a woman and the top scholar in the College of Home Economics was a man, so don't jump to any stereotypical conclusions!)

The College of Veterinary Medicine, now in its second century, is the oldest in the nation and is housed in some of the newest and most advanced veterinary medical facilities in the world. The College of Agriculture faculty was ranked among the top three in the nation in a recent survey.

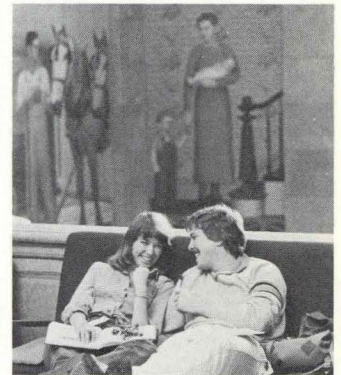
The College of Engineering is one of the largest and most distinguished in the nation. The College of Home Economics has been a pioneer and is one of the best in its field.

### The Land-Grant ideal

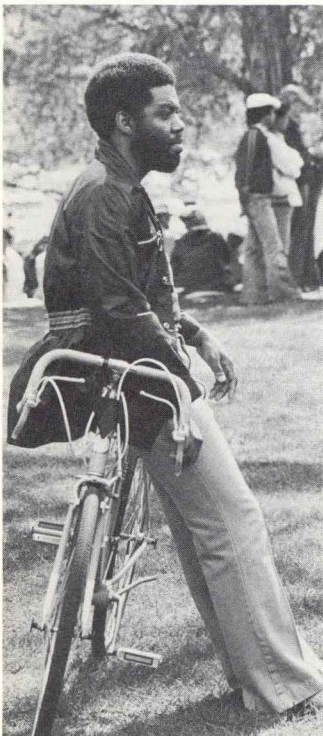
Since the day Iowa State opened its doors to students in 1868, it has been co-educational, it has been "the people's college," and it has stood squarely in the midst of society's concerns.

In fact, Iowa was the first state to accept the terms of the Land-Grant College Act, signed by President Abraham Lincoln in the depressing Civil War days of 1862. Iowa State has carried the Land-Grant banner throughout Iowa for more than a century,

taking the college to the people and making the entire state its campus. ISU does not exist in an ivory tower. Iowa State shares its best thinking with those beyond the campus.



## Iowa State today



### Humanities and the arts

In recent years, Iowa State has become a broad-based institution with increased academic emphasis in the humanities and the arts while maintaining its position in the scientific and technical fields.

Students at Iowa State University may earn undergraduate degrees in English, foreign languages and literatures, history, music, and philosophy. The departments of English and history have thriving graduate programs. The College of Sciences and Humanities—a liberal arts college within the University—is the largest college at Iowa State and is larger than any private college or university in Iowa.

### New college and school

The College of Design, formally organized in 1978, is the newest at ISU. It brings together, in the striking College of Design building, curricula in advertising design, art education, craft de-

sign, interior design, general art, architecture, landscape architecture, and community and regional planning.

The School of Business Administration (in the College of Sciences and Humanities), established in the fall of 1980, offers two undergraduate degrees: the Bachelor of Business Administration and the Bachelor of Science in Business Administration. The B.B.A. program features specialization through majors offered in accounting, finance, marketing, management, and transportation/logistics; the B.S. program is a broadly based liberal arts curriculum in general business.

### A cosmopolitan atmosphere

Iowa State is a major midwestern university and a center of learning for more than 24,000 students, undergraduate and graduate. They come from all 50 states and from 95 other nations. Iowa State has for years at-

tracted the largest number of Iowa students directly from high school. Over 40 percent of Iowa State's undergraduate students are women.

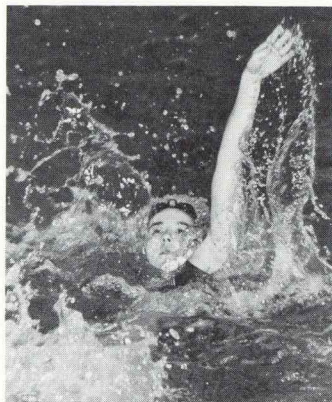
Iowa State is a cosmopolitan place. It is a center of culture. It is proud of its heritage, its growth, and its many attractions.

### Renowned alumni

George Washington Carver learned on the Iowa State campus. So did Henry A. Wallace. So did Vincent Atanasoff, who invented the electronic digital computer in the basement of the old Physics Building. So did Carrie Chapman Catt, the pioneer feminist. So did T. A. Wilson, Boeing's chairman of the board. So did Hugh Sidey, biographer, commentator, and observer of U.S. presidents. So did thousands of others who are leaders in business, education, politics, science, and industry today.



Iowa State is proud of its nationally known Cyclone teams, but it is equally proud to offer one of the nation's largest intramural programs. Each year more than 13,000 men and women participate in such sports as handball, swimming, volleyball, tennis, flag football, basketball, broomball, and others that will teach you, test you, and keep you in shape.



### Sports clubs

Beyond the classroom and the laboratory, Iowa State can help quench nearly any thirst for physical challenge. Dozens of sports clubs, many subsidized by student fees allocated through the student government, cater to the novice and the expert with interests ranging from hockey to trap shooting, parachuting to rugby, rodeo to fencing, downhill skiing to archery, flying to boxing. Sports clubs often seek off-campus competition and activities.

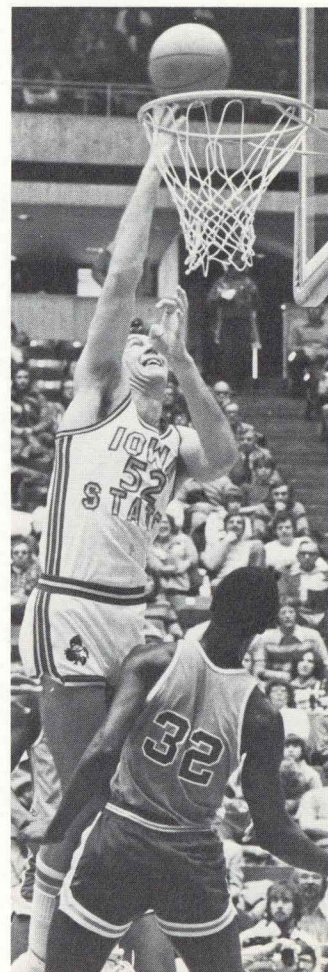


### Big Eight competition

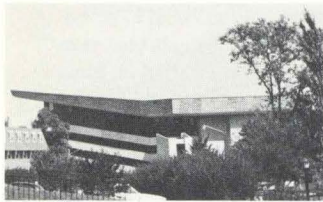


Iowa State is an excellent place to be a sports fan, too. ISU is a member of the respected Big Eight Conference and competes successfully within its conference and in the nation. Men's teams have repeatedly been national champions in wrestling and gymnastics. Cyclone football teams have been ranked nationally in recent years and have made several post-season bowl game appearances. Iowa State's

women's cross country track team is among the finest in the nation, having captured successive national team championships and individual world-class records. Iowa State also has improving programs in men's and women's basketball, golf, tennis, swimming, and other sports.







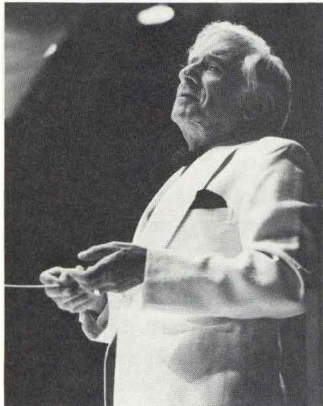
The cultural attractions at Iowa State are superb and, in some cases, without equal. Many are provided at special low prices for students. Many are of the caliber to be found only on a campus with the size and facilities of Iowa State.

**The Iowa State Center**

The magnificent Iowa State Center, built without the use of either state or federal appropriated funds, has provided a showcase for the arts unlike any other. The Center is the site of the Ames International Orchestra Festival, a series that has featured the

finest orchestras in the world, such as the New York Philharmonic, the London Symphony, the Philadelphia Orchestra, the Leningrad Philharmonic, the Boston Symphony, the Amsterdam Concertgebouw, and the Vienna Philharmonic.

**A parade of stars**

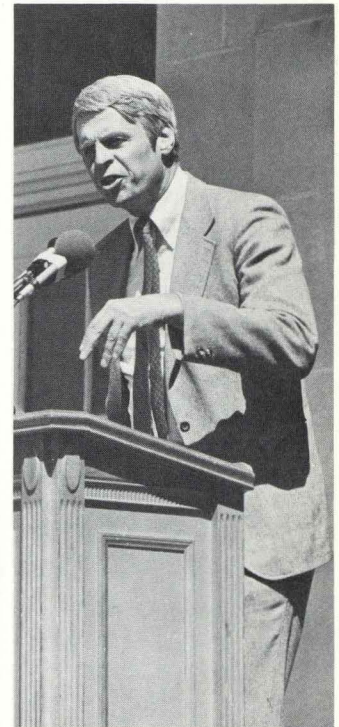


**Popular attractions**

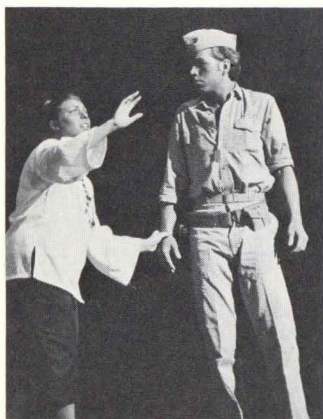
Some of the most talented artists and groups in the world of popular music appear at Iowa State. Students have recently had opportunities to see Queen, The Commodores, Elton John, Linda Ronstadt, The Who, The Beach Boys, Bruce Springsteen, Billy Joel, Marshall Tucker Band, Kansas, Eric Clapton, Steve Martin, Jackson Browne, and Willie Nelson. The parade of stars continues year after year.

**Music series and lectures**

Iowa State's Music Council sponsors dozens of attractions including Broadway musicals, dancers, instrumentalists, vocalists, and ensembles, many at special discount rates for students. The Lectures Committee sponsors appearances by some of the most famous, best informed, and occasionally the most controversial personalities on the public scene. Most lectures are free.



**A showplace for the arts**



**Drama and music**

Iowa State is blessed with rich theatrical offerings for which you may perform, join the stage crew, or become part of the audience. ISU Theatre, a part of the Department of Speech, offers several productions each year. Regular attractions are also provided by the Memorial Union's Maintenance Shop, a showcase for a bright array of local and off-campus talents.

Concerts and recitals by instrumentalists and vocalists from the Department of Music are part of the fare as are presentations by the ISU Orchestra, Concert Band, Jazz Ensemble, ISU Chorus, Oratorio Chorus, ISU Singers, and Musica Antiqua, a group that plays medieval music on instruments of the period.

Iowa State now has a new Music Hall, completed in 1980, which brings together under one roof all phases of the music program: classrooms, teaching laboratories, practice rooms, rehearsal rooms, studios, and a recital hall.

**Art and modern dance**

The spacious Brunner Gallery and Museum at the Scheman Building in the Iowa State Center offers ever-changing displays of artwork in every medium, from photography to metal sculpture. Artwork is also exhibited continuously in the College of Design.

The dance program presents Barchje (Bar-SHAY), a student-danced production originated and choreographed by students each year.

Iowa State has become a distinct cultural focal point in the decade since the inception of the Iowa State Center. The university is a stage for the finest in the classical and the contemporary arts.







## Living

Living is an important part of going to college. Much learning takes place outside the classroom.

In the relaxed small-city, large-campus atmosphere of Ames and Iowa State there is a variety of opportunities for living as individuals in the university's extensive residence hall system, in university-owned apartments, in small groups in fraternities or sororities, or in off-campus housing.

It's your choice. Iowa State does not require any of its students to live in residence halls so you may live in a Greek house, a

private room, an off-campus apartment, or university housing, according to your preference.

## Residence halls

Residence halls at Iowa State are widely regarded as among the best in the nation. Their popularity is attested to by the over-demand which they regularly experience and by the close friendships that develop in the "houses" in each of the halls. Residence hall living is popular at Iowa State. Each student is immediately a part of a group that governs itself, sponsors its own social activities, and develops its own intramural sports program.

Residence hall living is an adventure in "being on your own" but also being part of an atmosphere that can create lifetime friendships.

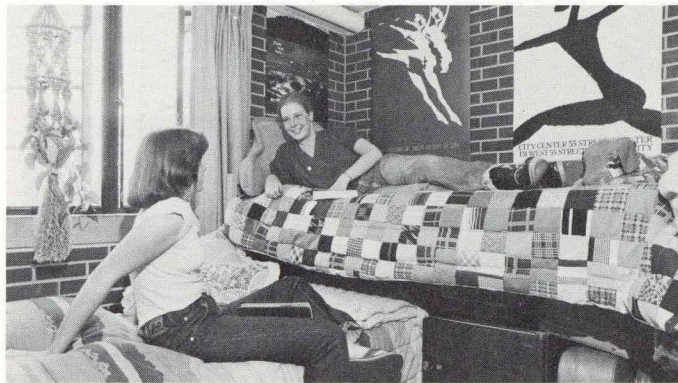
## University-owned apartments

On-campus apartments for both single and married students are also in demand at Iowa State. Students in university-owned apartments govern their own community through a mayor and a council and share the pleasures and problems found in any community of approximately 1,300 families.

## Greek housing

For students who want the unique experiences of fraternity or sorority living, the Greek system at Iowa State is exceptional. Several times in recent years the sorority and fraternity systems have been judged the best in the nation. The 32 fraternities and 16 sororities provide housing for approximately 1,500 men and 750 women.

Students interested in participating in fraternity and sorority rush activities may do so prior to fall classes. They also have additional opportunities during the academic year.



## Off-campus housing

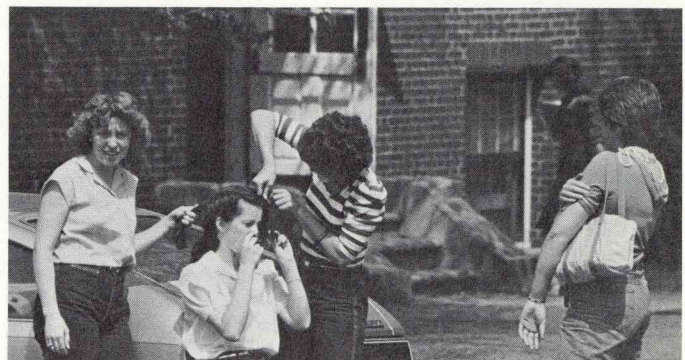
Housing for university students in the city of Ames has expanded and greatly improved in recent years. Ames can provide off-campus apartments ranging from a single modest room, or two or more rooms shared by several persons, to a luxurious private condominium. Most students find suitable housing somewhere between the extremes. The newly-expanded Cy-Ride public transportation system in Ames makes plentiful off-campus housing more convenient than ever before. The Department of Residence, the student-sponsored Tenant-Landlord Service, and the Ames Chamber of Commerce provide free help to students seeking off-campus housing.

## More about Ames

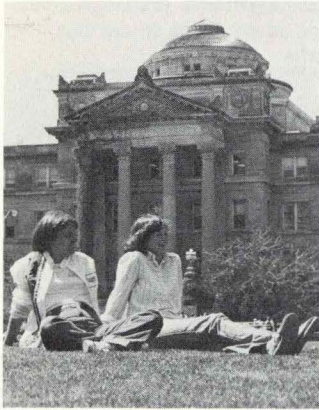
Ames is an unusually nice, small city about thirty minutes north of Des Moines, Iowa's capital. Since students make up nearly half its population, it has a college-town atmosphere with all the unique advantages a large campus brings to a friendly community of 50,000. It has plenty of pizza parlors, movies, and restaurants—along with shopping

malls, book stores, and ready-to-wear shops.

Although the university provides an on-campus Student Health Service with a staff of nine doctors, the city of Ames is known for its medical center with more than 50 doctors and a 217-bed hospital, all within minutes of the campus community.







When George Washington Carver was here, the Iowa State campus was spacious, wooded, and green. Today, it is still a beautiful place, comfortably situated in a 1,000-acre central campus "park" and a bright south campus dominated by the Iowa State Center, the football stadium, and the College of Veterinary Medicine. (The central campus is closed to automobiles while classes are in session during the academic year to preserve its park-like atmosphere.)

**The Campanile**

The heart of the main campus is what was originally known as "the great central lawn." Here, on central campus, Iowa's seasons display their colors and moods. The Stanton Memorial Carillon—

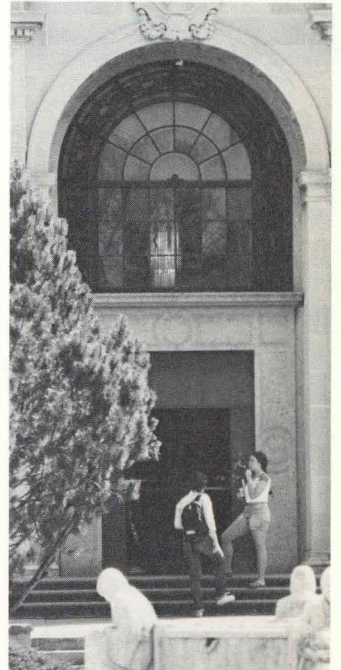
an Iowa State landmark for more than 80 years—tolls the passing hours and its bells play the music of Mozart or Gershwin or Manilow. Students find the central campus an inviting place to daydream through a drowsy springtime hour or toss a frisbee or watch the stars.

**Lake LaVerne**

Lake LaVerne is picturesque and idyllic—until the clamor and the color of the springtime canoe races bring roars and applause from spectators along its shoreline. In the calm and quiet of the warm-weather months, the resident swans—Lancelot and Elaine—glide majestically over its surface and rude ducks scrap for crumbs tossed by benevolent visitors.

**Memorial Union**

Another landmark at Iowa State is its Memorial Union, a center of activity that has served students for more than 50 years. The Union houses offices for most student organizations. It offers bowling, billiards, foosball, crafts, a browsing library, food, soft drinks, beer and wine, comfy couches and large lounges, big-screen television, and fine guest rooms for visitors to the campus. The Union is a private "club" and every student at ISU is automatically a member.



**Campus traditions**

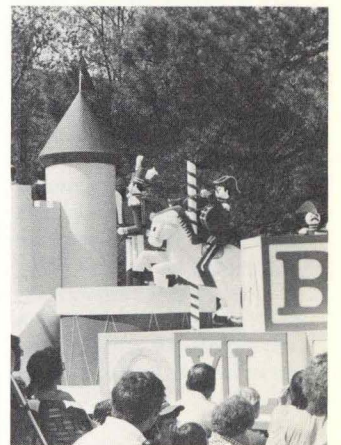


**Veishea festival**

The canoe races are part of Veishea (VEE-sha), Iowa State's annual "open house" and the largest student-managed festival in the nation. It began sixty years ago as a spring fling, and its name was derived from the first letters of what were the five divisions of Iowa State College. Today, Veishea draws many thousands of visitors to the campus for displays in Iowa State's colleges and academic departments, for live exhibitions on the grass of central campus, for a colorful parade, for presentations and awards, and for special theatrical attractions and popular concerts.

**The zodiac**

Within the Union is a handsome brass zodiac inlaid in the floor near the revolving main door. The designer hoped it would be constantly burnished and worn flush by the shoes of generations of students. However, the design is rarely trod upon, for—it is said—whosoever traverses the zodiac will flunk his or her next examination. Iowa State is a center of science and its students respect the empirical method, but why take unnecessary chances?





## The students



Among other organizations headquartered in the Union is the Government of the Student Body (GSB). Students at Iowa State are represented on university-wide committees and GSB makes student appointments to those committees. The GSB has other responsibilities, including the allocation of approximately a half-million dollars in student activity fees each year.

### Student publications

Students at Iowa State may be more expressive than those on some other campuses. ISU has more student publications than any other college or university in the United States.

The **Iowa State Daily** is a full-fledged daily tabloid newspaper written, edited, and published by students. There are several college magazines as well. **Sketch** is a student literary and artistic journal.

### Your experience counts

There is only so much you can be told about a place like Iowa State University. Your experiences will be different from anyone else's and so will your observations. Your acquaintances and friends and your ability to get along with them, with professors, and with the many others who keep the university going will have a lot to do with your impressions.

### Smaller pieces

That, of course, is true wherever you may go and whatever you may do. Iowa State is large by some standards, but it is made up of many smaller pieces; and it is made up of men and women who have a lot in common with you.

Iowa State has a reputation for high academic standards. It is a rigorous school, but its staff and faculty members and its administrators are concerned people. ISU is a warm and humane place where people who don't even

know each other exchange greetings as they pass on campus walks.

### ISU is for students

Iowa State has professional staff members whose job is to see you over rough spots, to listen to your concerns, and to help you visualize all the possibilities available to you. Every faculty member has an interest in you—although some may show it more than others. Staff members work to make the place efficient and effective for the people it is designed to serve—students.

### ISU is for you

Iowa State is big enough and diverse enough to help you become or try just about anything you want. Yet it is small enough to provide a warm and friendly atmosphere.

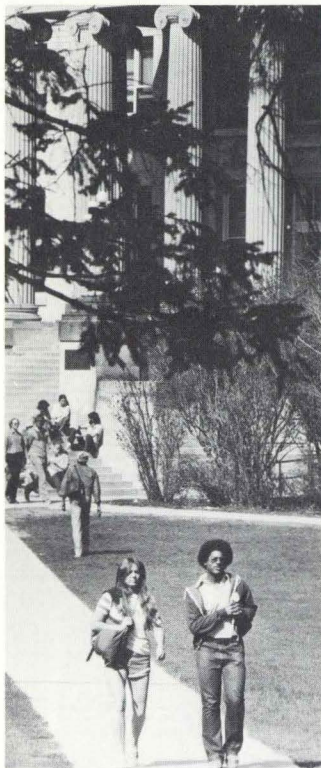
Many thousands of bright, talented, and dedicated people who have made significant contributions in the world call Iowa State University "my school."

Iowa State can be your school, too.





## Admission



Iowa State University is very interested in attracting minority students to our campus. We encourage any academically well-qualified minority student interested in attending Iowa State to apply for admission.

### When to apply

You should apply for admission nine to twelve months before you plan to enter Iowa State. By sending the completed application to us well in advance of your desired entry date you should have sufficient time to arrange for university housing, apply for financial assistance (the priority deadline is March 1), and make plans to attend orientation.

### How to apply

Complete and return the application (furnished at the back of this booklet) with a \$10 application fee payable by check or money order to Iowa State University. (Please do not send cash by mail.)

If you are unable to pay the application fee, please return the enclosed application for admission along with a statement from your guidance counselor that you are unable to pay the \$10 fee. The application fee will be deferred and your application for admission will be processed. When you enroll for classes at Iowa State University, the application fee will be payable at the time of registration.

Request that your academic transcript be sent to the Admissions Office, 7 Beardshear Hall, Iowa State University, Ames, Iowa 50011.

Remember, **you** must request that the transcript be sent.

If you are currently in high school, request that the school send a transcript of your 9th, 10th, and 11th grades, including your latest cumulative rank in class and ACT or SAT results if available. (Do not wait until test results are available, however, to apply.)

If you have already graduated from high school but haven't attended college, you should request that the school send a

complete transcript of your high school grades including your final rank in class and a statement of your graduation date.

If you have completed high school graduation equivalency by taking the GED examinations, request that an official copy of your scores be sent to the Admissions Office as well as a transcript of any high school work you completed.

If you have taken any course work at another college, request that an official copy of your college transcript be sent.

Students are normally notified of their admission status soon after they have submitted their application and transcripts.

### Housing application procedure

Enclosed with the admission letter will be a residence hall application card. A student who is unable to pay the \$50 housing deposit may have this deposit deferred by returning the application card to Mr. Elve Everage in the Admissions Office with a signed statement from the student's parents or guidance counselor indicating that paying the deposit would cause a financial hardship on the family. This fee would then be payable at the time of enrollment.

If you have any questions regarding your admission status or need any additional assistance please write Mr. Elve Everage in the Admissions Office, or call him toll free: 1-800-262-3810 (in Iowa) or 1-800-247-3965 (from the continental United States).

### Academic requirements

Students who rank in the upper half of their high school class will generally be admitted to Iowa State. Students who rank in the lower half of their high school graduating class will be given individual consideration for admission on the bases of test results and high school program of study, and may be admitted if it appears they have a reasonable chance of success at Iowa State.

All incoming freshmen are expected to complete the ACT or SAT and have the scores sent to the Admissions Office. However, students who plan to take the ACT or SAT during their senior year are urged to apply for admission before the test results are available.

### Transfer students

Transfer students with one year or more of college-level academic work will be considered for admission on the basis of their college performance. Students with less than a year of college work should have their high school transcript as well as their college transcript(s) sent to the Admissions Office.

As a transfer student, you are generally expected to have earned a C (2.0) average for all of the courses you have attempted. Credit and courses from other regionally accredited institutions are normally accepted for transfer to Iowa State, but they may not all be applicable toward your particular program or major. Credit not applied in the curriculum may be used as elective credit with the approval of your department. You should consult the General Catalog and possibly correspond with your department for information on degree and curriculum requirements when planning your program at another institution. Your last 32 semester credits must be completed at Iowa State.

You may transfer a maximum of 65 semester credits (97 quarter credits) from a two-year college. Once you have earned a total of 65 semester credits (97 quarter credits) at the college or junior-college level, you will not receive transfer credit for subsequent work taken at a two-year college. Credit earned in excess of the maximum credit acceptable from a two-year college is not applicable toward the minimum total hours required for a baccalaureate. However, this work is entered on your Iowa State record and may be used to meet specific course requirements.



**Notification of admission**

Students are usually notified of the decision regarding admission within approximately 2 to 3 weeks of the time the application and transcript are received. Applications submitted by transfer students and high school students with special circumstances requiring individual consideration may take somewhat longer to process. Admission commitments are issued for a specific term and may be used only for the term specified.

**Medical history**

New students will be sent a medical history form with their letter of admission. Students are asked to complete this medical history and return the form to the Student Health Service, Iowa State University, Ames, Iowa.

**Summer Orientation**

In early May, students who will be entering Iowa State in the fall will receive invitations to attend Summer Orientation. Several one- and two-day programs are held during June to acquaint new students with the university. Though attendance is not mandatory, most new students participate in these summer programs. Small group sessions are held so maximum personal attention can be given to each individual.

During Summer Orientation, new students will meet with advisers who will help them plan their fall schedule of classes. By doing this in the summer, students have a greater opportunity to obtain courses they desire. Selected upperclass students are also available to answer questions concerning various aspects of student life at Iowa State.

**Stay A Day**

"Stay A Day at ISU" is designed to give you a taste of what it's really like to live and study at Iowa State University. By returning the preregistration card in the back of this booklet at least three weeks before you would like to visit, you can be a participant in our program on a space-available basis. We will provide you with overnight housing with an Iowa State student host/hostess or you may arrange your own overnight accommodations by staying with a friend or in a local motel. The day following your overnight stay, you will speak with an admissions counselor in the Admissions Visitor Suite, tour the campus, visit a class and speak with a departmental adviser. The basic cost of "Stay A Day" is \$10. Once we have received your preregistration card and determined the availability of spaces, we will send you a letter requesting that you submit a \$10

reservation fee payable by check or money order to Iowa State University. There are seven "Stay A Day" programs during 1982-83—October 12, November 2, November 16, February 1, February 15, March 1, and April 26. You may visit the campus any time during regular office hours without an appointment. Therefore, you are not required to return the card unless you wish to participate in "Stay A Day." For more information contact the Admissions Visitors Suite.

**Other academic information****The university year**

The academic year at Iowa State is composed of two semesters of approximately 16 weeks each. Fall semester begins in late August, and spring semester in mid-January.

The third term of the calendar year is the summer term.

Students may enroll at Iowa State to begin study fall semester, spring semester, or at the beginning of the summer term.

**Grading and credits**

Because Iowa State University operates on the semester system, the unit of credit is the "semester hour." This unit represents one 50-minute class period per week for the duration of a 16-week semester. The credit hour load varies somewhat, but most

students carry from 15 to 17 credits each semester.

Iowa State University uses a grading system with passing grades of A, B, C, and D. University policy permits instructors to also use plus and minus grades.

**Credit by examination (Test-outs)**

If you have a superior high school background, or college-level proficiency in certain areas, you may obtain academic credit at Iowa State by means of special examinations.

Credit by examination may be earned in any of three ways at Iowa State and will be recorded on your permanent academic record when you enroll.

**1. Local departmental examinations**

You may take locally given departmental examinations for undergraduate credit in certain specified courses in areas for which you and the department feel you have the necessary preparation. These examinations are administered by the department offering the course, and students interested in taking a test-out exam should contact the appropriate department for specific information.

If you pass the examination, a grade of "T" will be reported to the Registrar's Office. The "T" grade represents performance equivalent to a "C" grade or better. "T" grades are not used in computing your quality-point average, but the credit does become part of your permanent academic record.





## 2. Advanced Placement (AP) Program of the College Entrance Examination Board

This program allows students, while still in high school, to take examinations for credit at the college level. Iowa State awards credit or advanced placement through the Advanced Placement Program in English, mathematics, history, chemistry, biology, music, physics, and foreign languages. High school counselors and teachers will assist with testing arrangements.

Generally, students scoring 3 or better on the exams will be considered for course credit based on departmental review of the exams. In some departments, only scores of 4 or better will be considered for credit.

Correspondence concerning the Advanced Placement Program should be addressed to the College Board Advanced Placement Examinations, P.O. Box 977-IS, Princeton, New Jersey 08541.

## 3. College Level Examination Program (CLEP)

Iowa State will grant six semester credits in each of three CLEP general examinations—Humanities, Natural Sciences, and Social Sciences—if your test score places you at or above the 60th percentile on national norms.

A few of the CLEP subject examinations are used instead of locally constructed exams in those cases where the content of

the CLEP exams has been judged equivalent to the content of certain Iowa State courses.

Percentile ranks for these tests compare your knowledge of the subject with scores received by regularly enrolled students who have completed an equivalent course. The minimum achievement level for credit on subject examinations is the 50th percentile using these norms.

For detailed information about CLEP testing, contact the Student Counseling Service, Student Services Building, Iowa State University, Ames, Iowa 50011.



## Correspondence study

Iowa State University does not offer correspondence courses. However, college-level courses taken by correspondence from accredited universities are acceptable for transfer at the undergraduate level if the courses taken are those which do not require laboratory study.

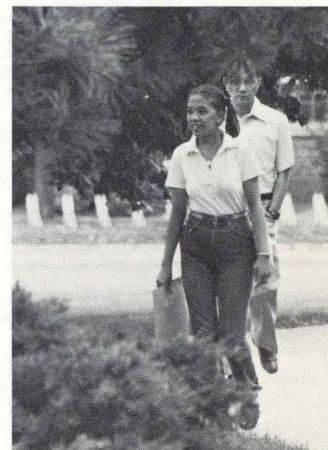


## ROTC

The university offers a full range of elective ROTC programs for men and women leading to an Officer's Commission in the Army, the Navy or the Marine Corps, and the Air Force.

Today, the military services are facing increasing demands for new officers with college backgrounds. For undergraduates, this presents some outstanding opportunities for ROTC full-tuition scholarships and for post-college employment in areas related to individual academic and professional objectives.

Each ROTC department at Iowa State offers programs designed to accommodate students in all academic majors. Men and women who desire information are urged to check the appropriate block on the application for undergraduate admission. The ROTC offices listed in the "Where to Inquire" section (at the back of this booklet) may also be contacted directly.



## Motor vehicles

Students may own and operate motor vehicles—automobiles, motor scooters, and cycles. Motor vehicles, however, are in no way necessary for an Iowa State student, and parking is limited. Students are charged to park automobiles on campus. All motorized vehicles operated by students must be registered at the Parking System Office. Bicycles must display a City of Ames license tag which can be obtained at no charge from the Parking System Office.



## Recommended high school preparation

Successfully completing the requirements for an undergraduate degree depends upon, among other things, basic skills competency. Thus, we strongly recommend that students confer with their guidance counselors for the purpose of determining whether or not developmental instruction in areas such as English composition and mathematics is needed. Every effort should be made to correct deficiencies in the basic skills areas prior to entering college. The alternative is very likely to be a delay in making normal progress toward an undergraduate degree.

### College of Agriculture

Recommended minimum preparation for study in the College of Agriculture should include the following high school training: 1. Three years of English/speech with emphasis in composition and communication skills. 2. Mathematics through intermediate algebra. 3. Strong emphasis in biology and the physical sciences, especially chemistry, is desirable for most curricula.

### College of Design

Recommended high school preparation for students entering most departments of the College of Design includes 4 years of English composition and rhetoric, 2 years each of mathematics and natural sciences, and 2 years each of social sciences, humanities, and art.

### College of Education

Students will find it beneficial to have at least 3 years of English/speech with emphasis in composition and communication skills and a general background in mathematics, natural sciences, social sciences, and humanities.

### College of Engineering

Students entering an engineering curriculum should have high school credit in 3½ years of mathematics, including 2 years of algebra, 1 year of geometry, and ½ year of trigonometry. Students

not having this mathematics background may still enroll in the College of Engineering but should expect to spend longer than 4 years to earn a degree.

In addition to the mathematics background, students interested in engineering will benefit by having had 4 years of English and 1 year each of chemistry and physics.

### College of Home Economics

Students will find it beneficial to have at least 1½ years of algebra, 1 year of chemistry, 1 year of biological science, and 4 years of English composition and rhetoric.

### College of Sciences and Humanities

Academic preparation should include 4 years of English composition and rhetoric; 1½ years of algebra and 1 year of geometry (an additional ½ year of trigonometry is also recommended); 2 years of science (biology, chemistry, or physics—preferably at least ½ year of each). Students should also take at least 2 years of the same foreign language. Where 3

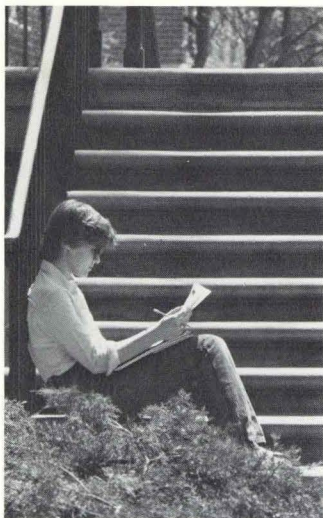
years are available, the third year is highly recommended. Those students who have 3 years of the same language will have already satisfied our foreign language requirement. Students intending to enter the School of Business or science or mathematical disciplines are urged to take at least an additional ½ year of algebra or analytic geometry as well as ½ year of trigonometry. All students who have the opportunity to take ½ year or more of computer science are urged to do so.

### College of Veterinary Medicine.

Preveterinary students at Iowa State University enroll in either the College of Agriculture or the College of Sciences and Humanities for their preprofessional study. It is recommended that students considering study in veterinary medicine complete a full program of college-preparatory subjects in high school, including 4 years of English, at least 3 years of mathematics (including trigonometry), and 1 year each of biology, chemistry, and physics.







New students must be admitted to the university by the Admissions Office before they can apply for university housing. Students who are admitted and apply for housing during the first semester of their senior year for fall semester of the following year generally can be assured of university housing.

University housing is offered in residence halls and in university-owned apartments. Housing is also offered in fraternity and sorority houses and in privately owned homes and apartments off campus.

The university provides 20 undergraduate residence halls and one graduate hall for men and women.

#### Residence halls

New students will receive information concerning university housing with their notification of admission if they requested such information on their application for admission. Those students who complete contracts for housing in a university residence hall or apartment for fall semester but later decide to cancel those arrangements may do so and obtain a refund of the housing deposit if the Residence Office is notified before July 1.

Rooms in the residence halls are furnished with single beds, innerspring mattresses, chests of drawers, study desks, chairs, window drapes in most halls, and

telephones. Students provide their own pillows, blankets, bed linens, mattress pads, towels, and study lamps, and clean their own rooms.

The room and board fee for each semester covers both room and board and basic telephone costs in the undergraduate halls. Students who sign a residence hall contract are obligated to room and board in the residence hall for the entire academic year if they remain in school, except under special conditions where a release may be granted by the Director of Residence.

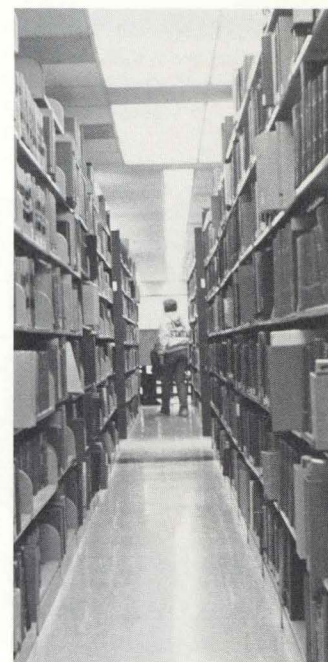
Room assignments for fall semester for those who have room contracts on file with the Director of Residence are made after July 1.

The Interfraternity Council encourages men who are planning to live in a fraternity not to sign a residence hall room contract, or to sign a contract and request assignment to temporary housing. By requesting the temporary housing option, students are assured of housing and yet are able to cancel their contracts at any time without cost. Men who join a fraternity usually live in their fraternity chapter house.

Since space is not normally available for freshmen women in a sorority house, women should contract for a room in a university residence hall to be assured of housing.

#### University-owned apartments

Married students, single parents, and other single students live in on-campus university apartments. The University Student Apartments consist of Pammel Court, Hawthorn Court, Schilletter Village, and University Village. Inquiries should be directed to: University Student Apartment Office, 100 University Village, Iowa State University, Ames, Iowa 50010.



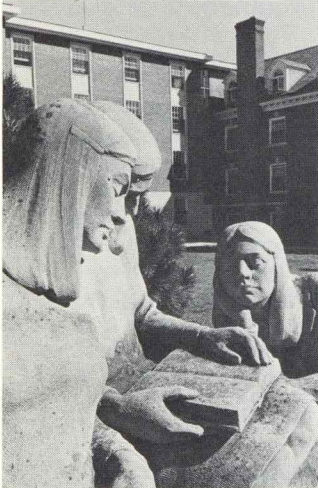
#### Sororities and fraternities

National sororities and fraternities have been established at Iowa State University since 1875 with the approval of the university.

Women admitted to or enrolled at Iowa State University are eligible for sorority affiliation. Active members or pledges living in the chapter house pay monthly house bills averaging \$215. This includes board, room, social and national dues, and may include a building fund payment. First-year women who pledge during formal rush or later in the year are urged to live in residence halls for the academic year. However, both they and upperclass women may move into their sorority houses any time upon invitation of the chapter, providing they abide by the provisions of their residence hall contracts.







New women students will receive a Sorority Rush Book in the spring or early summer.

Formal sorority rush is held in the fall prior to the opening of school. Women interested in participating in the fall rush program must submit their rush fee and card (which is an insert in the Sorority Rush Book) to the Panhellenic Adviser **before July 15**. Registration received after this date **may not** be accepted.

Men admitted to or enrolled at Iowa State University are eligible for fraternity affiliation. First-year students who affiliate may live in fraternity chapter houses. These students should not contract for a room in the residence halls as

the contract is binding for the full academic year. Monthly expenses in fraternities average about \$220 for board, room, and dues.

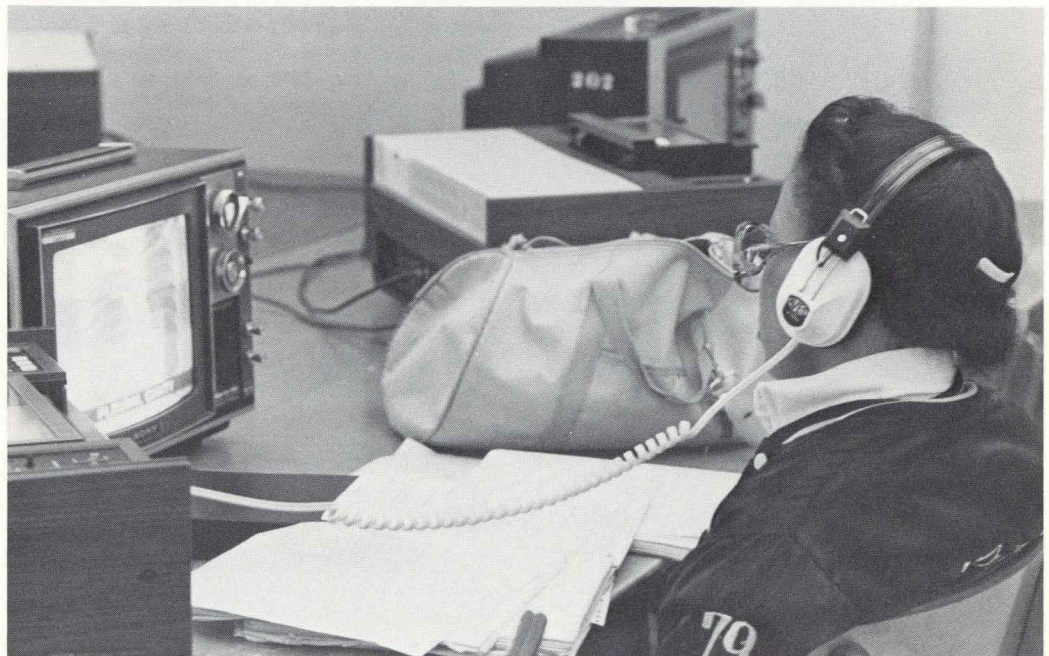


Recruitment occurs during the summer and through formal rush, which takes place immediately before the beginning of fall semester classes. The registration deadline for fall 1983 is August 5.

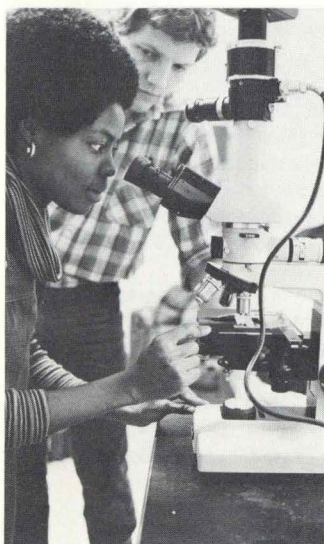
All new students will receive a rush pamphlet containing information about fraternities or sororities at Iowa State. Further information may be obtained by writing to: Greek Affairs Adviser, Office of Student Life, Student Services Building, Iowa State University, Ames, Iowa 50011.

### Off-campus housing

Many students choose to make off-campus living arrangements. If you prefer to live off campus, we encourage you to investigate off-campus housing by contacting the Single Off-Campus Housing Office, 1212 Friley Hall, Iowa State University, Ames, Iowa 50012 (515-294-2364), the Tenant-Landlord Service, 39 Memorial Union, Iowa State University, Ames, Iowa 50011 (515-294-8654), or the Ames Chamber of Commerce, 205 Clark, Ames, Iowa 50010 (515-232-2310). These offices are prepared to provide you with a listing of Ames realtors and privately owned apartments in the Ames community which you can use to find housing to suit your needs.







### Personal services

**Diet table**—Students with special dietary needs may receive specially prepared meals through the Student Health Service rather than regular residence hall meals. The cost for this service is a few dollars per semester above the board rate in the residence halls.

**Learning disabilities**—Students with learning disabilities should contact the Student Counseling Service to find out what services may be available at Iowa State to counteract their particular disability.

**Physical handicaps**—Students with physical handicaps can receive information regarding the availability of readers and the relocation of classes to ensure accessibility by contacting the Office of Student Life.

**Writing Clinic**—Students who need to develop their writing skills before taking regular English composition classes may enroll in the Writing Clinic which

is administered by the English Department.

### Student Counseling Service

If you have difficulties—personal, educational, vocational—the Student Counseling Service offers you professional confidential counseling and testing services at no charge. Appointments to talk with a counselor may be made at the Student Counseling Service, third floor of the Student Services Building.

### Student Health Service

The Student Health Service in the Student Services Building on campus maintains a medical staff at all times for primary medical care and emergencies. Students who require special diets for medical conditions may eat at the hospital diet table.

Many services will be available free of charge to students who pay a voluntary health fee (\$15 per semester). Students who do not participate in the program will be charged fees for each service.

All students will be responsible for charges resulting from accidents, emergencies, or surgery, and therefore the Health Service recommends that you have health insurance coverage. Health insurance is available through the Student Health Service and may be purchased at registration or after enrollment.

### Placement services

As you begin to explore career alternatives, your college Placement Office is an important resource center. There you will find information on career opportunities, data on specific employers, and tips on job-hunting techniques.

In addition, your college Placement Office also offers vocational counseling and helps to arrange campus interviews for students with prospective employers who visit the campus throughout the year.

## Special programs

### Adult students

The Adult Student Information Office, located in the Student Counseling Service, Student Services Building, is open to anyone 25 or older who is returning to college or who is thinking about college study. The office provides information, counseling, tutorial information, and contact with other adult students on campus.

### Summer Enrichment Program

The Summer Enrichment Program is an extended, intensive orientation for students who have been admitted and plan to enroll at Iowa State University.

The program provides students with an opportunity to develop skills that will enhance their academic performance at Iowa State University.

Students in the Summer Enrichment Program receive vocational counseling, tutoring, academic advising, and career planning assistance. They also earn col-

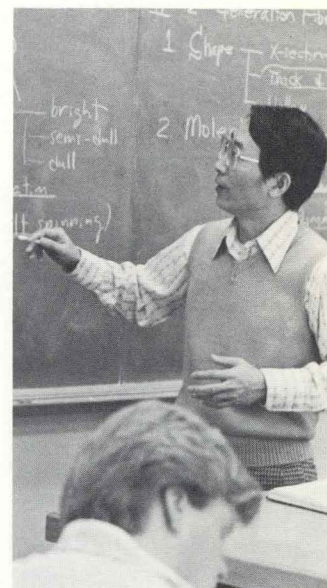
lege credit in such subjects as English, mathematics, library science, and study skills.

Room and board are provided and paid for by the Summer Enrichment Program. Students are housed in one of the ISU residence halls.

For further information, write to the Coordinator of the Summer Enrichment Program, Office of Minority Student Affairs, 301 Beardshear Hall, Iowa State University, Ames, Iowa 50011.

### Honors Program

The University Honors Program provides an academically enriched and unique education for high-ability students. Honors students enroll in special seminars and sections of regular courses, and with the help of an honors adviser they chart their own individualized programs of study. Transfer students are eligible to apply for admission to the Honors Program after one semester of work at Iowa State University as long as they have at least 32



semester credits remaining before graduation at the time of admission. A limited number of freshmen are admitted into the Freshman Honors Program each fall. Interested students are invited to apply through the Honors Program Office, Osborn Cottage.



### Minority Student Affairs

The Office of Minority Student Affairs coordinates academic and financial services for minority students. Individualized assistance is provided by academic specialists, student counselors, and program staff members.

### Minority student scholarships

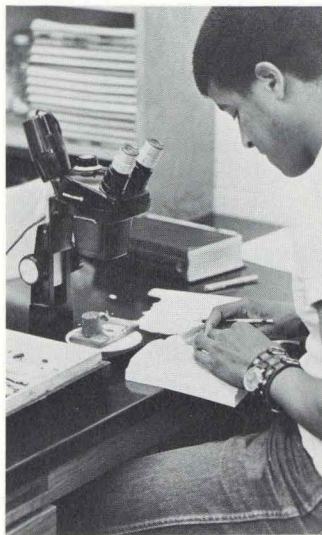
Students who have been granted admission to Iowa State and who have been selected as National Achievement Finalists may qualify for academic scholarships which are granted by the Office of Minority Student Affairs. These scholarships will cover the cost of tuition (resident or nonresident) and room and board, and are renewable for four years.

Those students who are selected as National Achievement Semi-Finalists and Commended Status may qualify for tuition scholarships which are renewable for four years.

Students who did not compete in National Achievement competition may be considered for academic scholarships on the basis of their class rank and ACT or SAT scores at the time of admission.

For further information regarding minority student scholarships, please write to Mr. Elve Everage

in the Admissions Office or call him toll free at 1-800-262-3810 (in Iowa) or 1-800-247-3965 (from the continental United States).



### Minority student organizations

As more minority students have entered the university, various organizations have been formed to represent the needs of these students. There are three groups on campus: Black Student Organization, Hispanic Student Union, United Native American Student Association.

The Black Student Organization exists to provide relevant experiences for and information about black people and to strengthen the educational experience of black students at Iowa State.

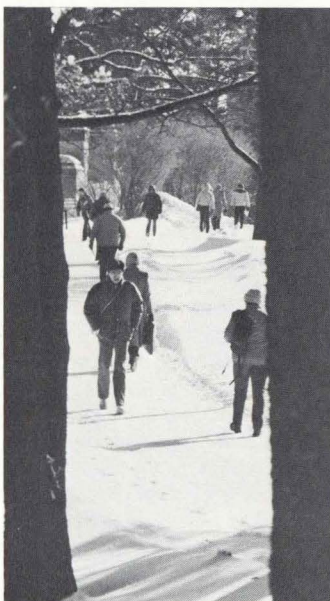
"Black Perspectives in Contemporary America" is the name of a three-part symposium at Iowa State sponsored by the Black Student Organization and funded by student activity fees. The symposium attempts to reflect black perspectives on issues of the day that have implications for all Americans.

Some of the participants in this program have been Julian Bond, Nikki Giovanni, Mayor Richard Hatcher, Lerone Bennett, Ruby Dee, Ossie Davis, Dick Gregory, Tony Brown, Charles Hurst, and the Reverend Jessie Jackson.

The Hispanic Student Union is geared toward meeting the unique needs of American students who are bicultural and bilingual. Its specific goals and objectives include:

1. The successful educational and social integration of the Hispanic students on campus.
2. Providing programs of interest to enrolled Hispanic students.
3. Coordinating events with other student organizations with the purpose of ensuring cultural and human understanding.

The United Native American Student Association is concerned with promoting awareness of Native Americans, both past and present. The organization serves as an identity group for Native American students on campus and as an educational facilitator for the rest of Ames/ISU and surrounding communities.

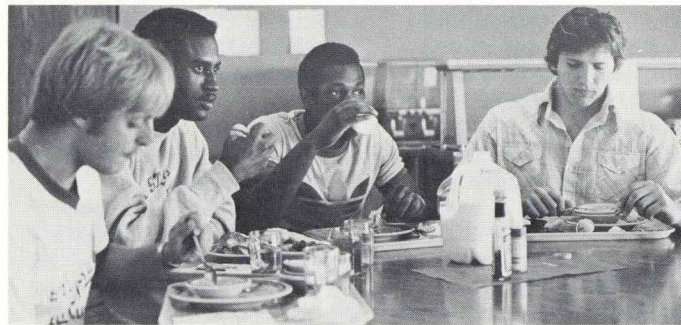






The United Native American Student Association has developed ongoing and short-term projects which will increase the awareness of problems facing Native Americans. It has developed a tutoring program to tutor students at the Mesquakie Indian Settlement at Tama, Iowa. The United Native American Student Association has also cosponsored a spring symposium and developed a speakers bureau.

The Black Student Organization, the Hispanic Student Union, and the United Native American Student Union look forward to the ideas and energies of new students at Iowa State.



### Black Cultural Center

The Black Cultural Center, established in 1970, provides cultural and social activities for students, staff, and the Ames community. The primary goal is to promote understanding of various cultures in the Ames community.

The Black Cultural Center provides a wide range of activities which include a career conference, non-denominational religious services, Gospel Soul Innovators Choir, and the Paul Roberson Players Theater. The center is located at 517 Welch Avenue and is open to the public.



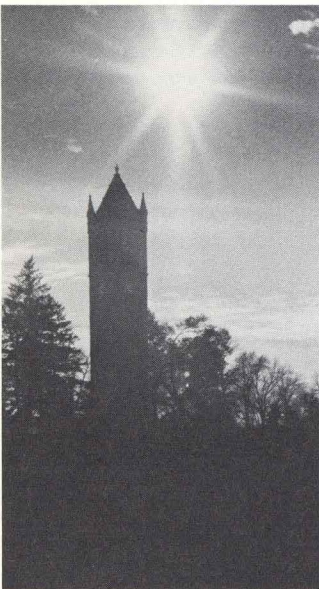
### Veterans

If you are now in military service or if you are a veteran of military service, you may be eligible for educational benefits from the Veteran's Administration. These include monthly allotments and provisions for tutoring services.

To prevent delay of your allotment checks, please contact the Veterans Clerk, 107 Beardshear Hall, 60 days before you expect to enroll at Iowa State.

The Peer Adviser Center in Alumni Hall offers help with your problems as well as a place for you to study, relax, and meet with other veterans.

## Costs



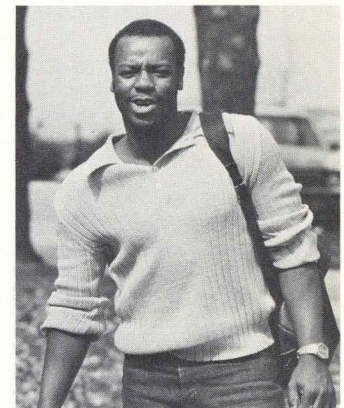
**(All university fees are subject to change without notice by the State Board of Regents.)**

Fees and expenses include tuition, room and board (for students living in university residence halls), an estimated allowance for books and supplies, and an estimated allowance for miscellaneous living expenses. Fees for the 1982-83 academic year are:

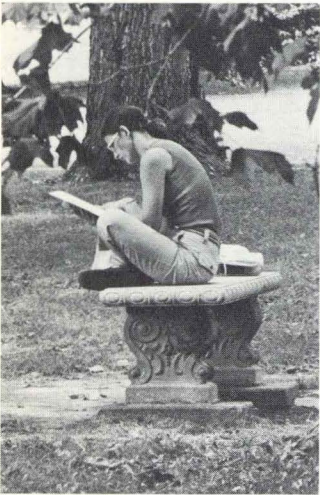
Tuition covers laboratory course expenses, membership in the Memorial Union, subscription for student publications, and partial admission to athletic events, concerts, and lectures in addition to covering the cost of enrolling as a full-time student.

Expenses payable directly to Iowa State University (including tuition and room and board) must be paid within the first week of each term during the regular school year. Payment for the summer session must be made within the first two days of classes.

	Iowa Resident	Non-resident	Resident Vet med	Nonresident Vet Med
Tuition	\$1,040	\$2,580	\$2,300	\$4,800
Room and board	1,762	1,762	1,762	1,762
Books and supplies (est.)	330	330	330	330
Miscellaneous (clothing, transportation Sunday evening meals, personal expenses)	1,168	1,168	1,168	1,168
<b>Total</b>	<b>4,300</b>	<b>5,840</b>	<b>5,560</b>	<b>8,060</b>







## Financial aid

The financial aid program at Iowa State University assists students who would be unable to continue their education without financial help.

Iowa State University follows a nationally accepted philosophy in administering financial aid programs. The basis of this philosophy is the belief that you and your parents have a responsibility to meet as much of the cost of attending the university as is reasonably possible. Financial aid is awarded to supplement your financial resources and those of your family.

The Financial Aid and Student Employment Office staff administers aid programs and counsels students in planning individual methods of meeting college costs. If you have questions, please feel free to contact the Financial Aid and Student Employment Office, Iowa State University, Ames, Iowa 50011.

## Who is eligible?

To be eligible for financial aid you must be a U.S. citizen or permanent resident, enrolled on at least a half-time basis, and making satisfactory academic progress toward a degree. You must also demonstrate financial need, which is the difference between the cost of attending the university (expense) and the amount you and your family can provide (family contribution).

Your family's ability to pay for college and your financial need are determined by analyzing the information you provide on the Family Financial Statement. Scholarships, grants, loans, and part-time employment are available singly and in various combinations to meet your financial need.

To receive priority consideration for all financial aid programs (including grants, scholarships, and need-based employment) administered by the Financial Aid and Student Employment Office and for the Pell Grant Program, you must complete and submit the Family Financial Statement before March 1, 1983. If you apply for aid after the March 1 deadline, you will be considered

for assistance according to the availability of funds. Since financial aid is awarded for only one academic year at a time, it is necessary to submit a new Family Financial Statement for each year you may need aid.

Although the Family Financial Statement is preferred, you may also apply for aid using a Financial Aid Form. Both the Family Financial Statement, which is processed by the American College Testing Program (ACT), and the Financial Aid Form, which is processed by the College Scholarship Service (CSS), are available after December 1, 1982, from your high school counselor or the Financial Aid and Student Employment Office. Information about state and local aid programs is also available from these sources.

## Application procedures and award notification

To ensure full consideration for all forms of aid, please complete each of the following steps:

**Step 1.** Apply for admission to Iowa State before March 1, 1983.

You are encouraged to apply for admission before March 1, 1983, since that is the deadline for priority aid consideration. Your application for financial aid cannot be processed until you are admitted.



**Step 2.** Complete the Family Financial Statement, indicating that you wish to be considered for all financial aid programs, and mail it before March 1, 1983.

When you complete and submit the Family Financial Statement, you will automatically be considered for the Pell Program and all other aid programs administered by Iowa State. Family Financial Statements are available from your high school counselor or the Financial Aid and Student Employment Office after December 1, 1982.







Occasionally, students will be requested to supply the Financial Aid and Student Employment Office with further information. If you receive requests for additional information from the office, you can avoid further delay in processing your application by responding promptly.

**Step 3.** Forward all three copies of your Pell Grant Student Aid Report to the Financial Aid and Student Employment Office.

Approximately six weeks after you complete and submit the Family Financial Statement, you will receive a Student Aid Report. Whether or not you are eligible, you **must** send all three copies of that report to the Financial Aid and Student Employment Office before funds awarded by the office will be disbursed.

**Step 4.** Notification of award.

If you apply by March 1, you will be notified in April regarding your eligibility for financial aid. If you apply after March 1, you will be notified within two weeks after your application is received. If you have been awarded financial aid, you will receive an award letter which shows exactly what type of financial aid you have been offered and the amount of the award. You must accept or decline the financial aid award by responding on the award letter, and returning it by the reply date shown. If you do not return the award letter by the reply date, your award may be withdrawn.

The awarding of aid is contingent upon the availability of funds, accuracy and timeliness of the application, and eligibility for specific aid programs. If you have been awarded aid in addition to that awarded by the Financial Aid and Student Employment Office, you must notify the office in writing so your award can be reviewed for possible adjustment. **If you decide to seek on-campus employment and you have been awarded aid, you should check first with the office to see if you are eligible to work on campus.**

**Step 5.** Disbursement of aid.

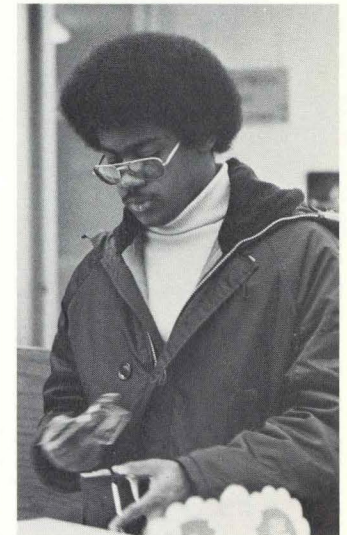
You will receive one-half of your financial aid from the Financial Aid and Student Employment Office during registration for each semester. Your financial aid will be credited to your university bill. If your aid for any semester exceeds the fees you owe, you will receive a check or cash for the remaining amount. If your aid is less than the amount due, you must be prepared to pay the additional amount not covered by your financial aid.

Your financial aid award is based on the assumption that you will be a full-time student. If you decide to enroll as less than a full-time student, or if you withdraw from the university, part or all of the refund you receive from the university may be claimed by the Financial Aid and Student Employment Office. Refer to the University General Catalog for more information on refunds.

### Student budgets

The Financial Aid and Student Employment Office uses standardized budgets which include tuition and fees, room and board, books and supplies, and miscellaneous expenses. Budgets differ depending on residency, marital status, dependent or independent status, and undergraduate or graduate enrollment. As outlined above (under **Costs**), the costs for a typical undergraduate dependent

Iowa resident living in university housing currently total approximately \$4,300 per academic year. However, you are reminded that all university fees are subject to change without notice by the State Board of Regents.



The office recognizes that an independent student has responsibility for some additional expenses that the typical dependent student does not have. You may be classified as an independent student for financial aid purposes **only** if you can answer "No" to all of the questions listed below:

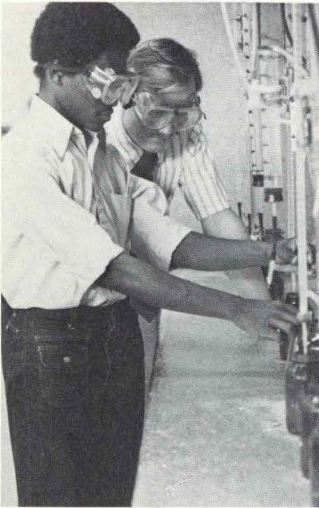
Did (or will) you live with your parents for more than six weeks during 1982 and 1983?

Were (or will) you (be) listed as an exemption on your parents' U.S. income tax return for 1982 and 1983?

Did (or will) you receive assistance worth more than \$750 from your parents during 1982 and 1983?

Living expenses for independent, married, and single-parent students are based on average costs in Ames. For further information on student budgets and the definition of dependent and independent student status, please contact the Financial Aid and Student Employment Office.





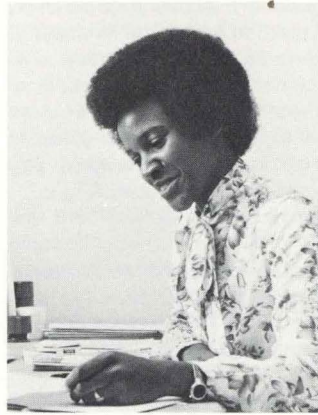
### Common errors which cause delays

Experience has shown that some students do not receive financial aid or the best possible financial aid package for one or more of the following reasons:

1. Neglecting to complete or submit the Family Financial Statement and other information requested by the Financial Aid and Student Employment Office. Incomplete applications may result in necessary but time-consuming follow-up procedures.
2. Neglecting to promptly forward all three copies of the Student Aid Report from the Pell Grant Program to the Financial Aid and Student Employment Office.
3. Neglecting to return the award letter noting acceptance of your award. If the award letter is not returned by the reply date indicated, the Financial Aid and Student Employment Office may withdraw the award on the assumption that it is not wanted.
4. Neglecting to enclose the processing fee.
5. Neglecting to file the Family Financial Statement before March 1.

### Scholarships

Students are also encouraged to look into sources of financial assistance which are not based on financial need. Scholarships are among the possibilities for students, and they may be awarded for a wide variety of reasons. There are many types of organizations which provide scholarship funds. These include ISU academic departments, local community groups, local businesses and agencies, and national association.



You are encouraged to contact these potential sources early; if you are selected for a scholarship please notify the Financial Aid and Student Employment Office in writing of the source and dollar amount of the award. Listed below are some helpful hints about searching for a scholarship.

1. Start with your own department. If you have declared a major, check with the college dean's office or the department chairperson concerning available merit scholarships.
2. Contact any organizations you or your family belongs to. Groups which have funds to award usually decided on the recipient(s) in the spring.
3. The ISU Financial Aid Office has several reference books which students may use in the office for information and addresses.
4. The ISU library and other large local libraries should have resource books in their reference sections which list national organizations that award scholarships.

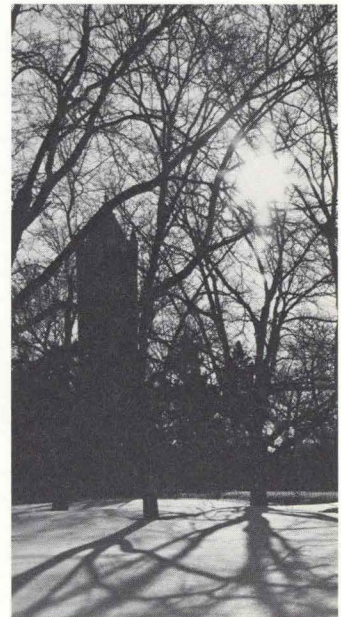
### University short-term loans

Students wishing to distribute the costs of attending the university throughout the semester may obtain a short-term loan from the Financial Aid and Student Employment Office. These loans, which are available at the beginning of each semester and are due by the end of the same semester, are limited to the amount of tuition, fees, and room and board assessed by the university plus \$150 for books. Any other financial assistance a student receives will be subtracted from these maximums. Interest on these loans is one percent per month (or 12 percent per year) on the unpaid balance of the loan.

### For more information

For additional financial aid information, write or visit the Financial Aid and Student Employment Office, 12 Beardshear Hall, Iowa State University, Ames, Iowa 50011; or telephone 515-294-2223 or one of the toll-free numbers on page 26.

Financial aid applications are processed without regard to age, color, handicap (mental or physical), national origin, race, religion, sex, or status as a disabled veteran or veteran of the Vietnam era. All state and federal aid programs are subject to review by their respective governing agencies, and may be changed without notice.







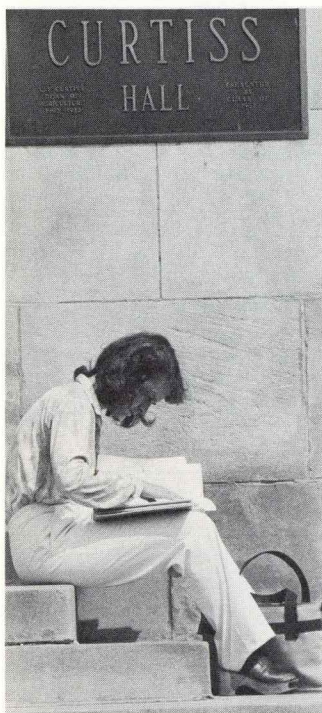
Undergraduate study is offered by the colleges of Agriculture, Design, Education, Engineering, Home Economics, and Sciences and Humanities, and by the School of Business Administration. Professional study is offered by the College of Veterinary Medicine. In addition, the Graduate College provides an opportunity for advanced study and enriches the overall academic atmosphere through educational exchange and contact with undergraduate areas of the university.

The programs in each college are designed to develop your general educational background as well as specialized knowledge in your chosen field. You will be encouraged to plan an individualized program to suit your interests, abilities, and goals.

before making a commitment to a major. If you find yourself in this position, you may enroll in the colleges of Agriculture, Design, Education, Engineering, Home Economics, or Sciences and Humanities without declaring a major upon admission.

It is not uncommon for students to begin their college education without formally declaring a major. Some students need or want the opportunity to explore and experience academic offerings

**College of Agriculture**



The College of Agriculture prepares students for a wide range of career opportunities that relate to land use. Agriculture is concerned with use of land for forests and recreation, and for producing food as well as ornamental plants. The student who likes to work with plants or animals will find an agricultural career rewarding.

The facilities for scientific and technological education at Iowa State are among the finest to be found in the world. Many world-famous scientists are among the faculty of the College of Agriculture.

Most of the curricula in the College of Agriculture do not require a farm background, nor do they require farm experience before graduation. However, the

farm experience is a valuable asset for students planning to study agriculture.

You may choose a curriculum as you apply for admission or simply indicate General Agriculture. A degree in General Agriculture is not offered, however. It is the classification used for undeclared majors.

**Curricula**

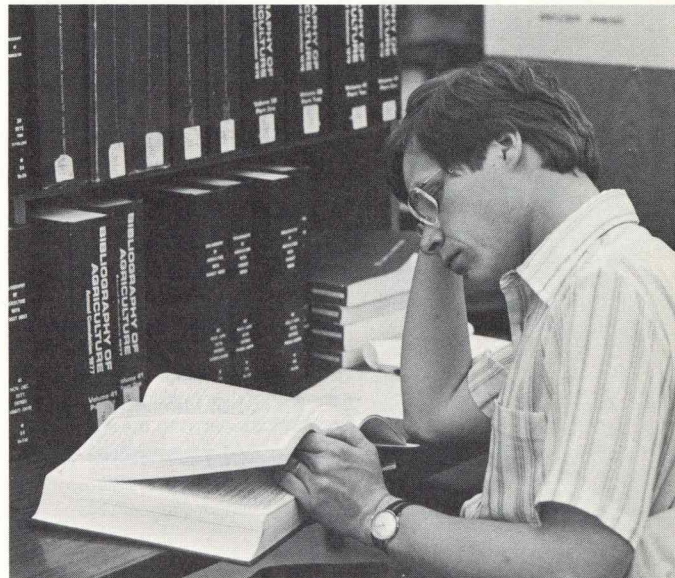
- Agricultural Biochemistry
- Agricultural Business
- Agricultural Education
- Agricultural Extension Education\*
- Agricultural Journalism
- Agricultural Mechanization
- Agronomy
- Animal Ecology
- Animal Science
- Biometry
- Dairy Science

- Entomology
- Farm Operation
- Fisheries and Wildlife Biology
- Food Technology
- Forestry
- Horticulture
- International Agriculture\*
- International Studies\*
- Pest Management\*
- Plant Pathology
- Public Service and Administration in Agriculture
- Seed Science\*

\*Offered only as a secondary major in a double major program

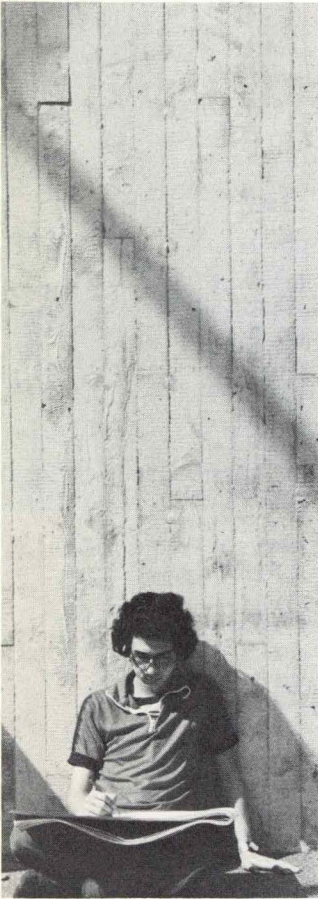
**Nondegree programs**

- General Agriculture
- Farm Operation 2-Year Program
- Farm Operation Winter Program
- Preveterinary Medicine





## College of Design



The College of Design provides the student with an opportunity to develop a sensitivity to design and the skills necessary for professional competence.

Established July 1, 1978, the college consists of the Departments of Architecture, Art and Design, Community and Regional Planning, and Landscape Architecture.

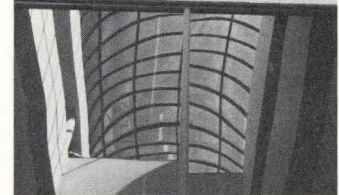
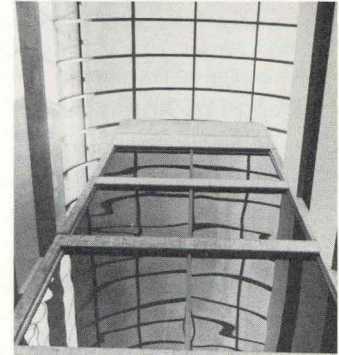
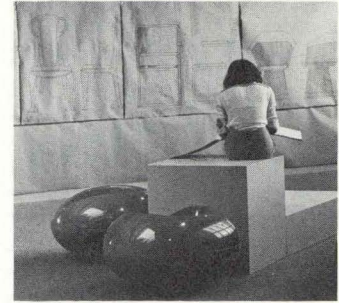
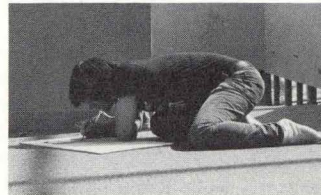
The college is housed in an impressive facility designed to encourage student interaction and creativity. Here students are prepared for a wide range of professional design roles as they participate in classroom and studio activities, view exhibitions of student and professional work, engage in discussions with professional practitioners, and carry out field studies.

Graduates of the College of Design are employed in commercial and private firms, industry, government, and education. Pro-

grams of study in the college prepare students for careers in architecture, landscape architecture, environmental design, interior design, city and regional planning, advertising design, merchandising, and teaching. Employment as a museum or art program director, crafts director, or studio artist are among the many other career possibilities.

### Curricula

Advertising Design  
Architecture  
Art and Design  
Art Education  
Community and Regional Planning  
Craft Design  
General Art  
Interior Design  
Landscape Architecture



## College of Education



The College of Education offers courses for all undergraduate students seeking teacher certificates for the elementary and secondary schools and for several professional non-teaching programs.

A prospective professional educator must have an understanding of people, teaching, and learning as well as skill in applying such understanding in the classroom or in a professional position.

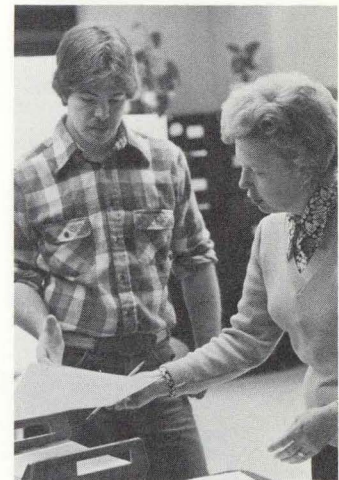
Nearly one out of five students who graduate from Iowa State is certified to teach in elementary or secondary schools. Students enrolled in teacher education will student-teach during their senior year; however, opportunities for pre-student-teaching classroom experiences begin in the freshman year and are available during each academic year.

If you plan to teach agriculture, art, or home economics, you should enter the respective college (Agriculture, Design, or Home Economics). You should enroll in the College of Sciences and Humanities if you plan to teach in one or more of the following fields: biology, chemistry, earth science, English, foreign languages, general science, history, journalism, mathematics, music, physics, political science, psychology, social studies, speech.

Each year approximately 82 percent of the graduates who teach go directly into the public schools of Iowa. However, graduates of the College of Education are teachers in educational institutions from California to Florida, from Australia to Africa and India.

### Curricula

Elementary Education  
Industrial Education  
Leisure Studies  
Physical Education







The engineer occupies a uniquely important position in our modern civilization. He or she has the responsibility for taking the discoveries of basic science and translating them into products, structures, facilities, and services for the use of mankind.

Graduates of the College of Engineering are in high demand in today's job market. The problems they work on are varied: development of more efficient engines, improved transportation systems, communication systems, increased industrial productivity, development and use of new sources of energy, development of our water and other natural resources. If any of these or related engineering areas interest you, you should consider the College of Engineering.

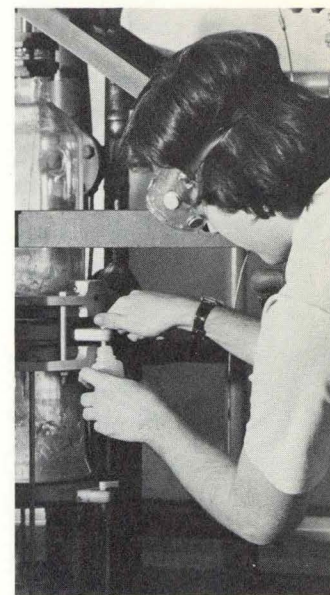
The curricula in engineering provide a balanced program in mathematics, basic sciences, engineering sciences, engineering design, social sciences, and hu-

manities. This content is consistent with recommendations of the Accreditation Board for Engineering and Technology, the national engineering accrediting agency.

You may choose a particular curriculum, or you may enter the Department of Freshman Engineering as an undeclared student for your first year.

#### Curricula

Aerospace Engineering  
Agricultural Engineering  
Ceramic Engineering  
Chemical Engineering  
Civil Engineering  
Computer Engineering  
Construction Engineering  
Electrical Engineering  
Engineering Operations  
Engineering Science  
Industrial Engineering  
Mechanical Engineering  
Metallurgical Engineering  
Nuclear Engineering  
Surveying



## College of Home Economics



The times are changing and home economics is changing with the times. Today, home economists work in business, government, research, education, and public service.

Job placement in the College of Home Economics is high. Graduates meet the challenges in areas such as consumer behavior, food product development, day care center operations, nutrition research, hotel or restaurant management, communication, education, retail management, fashion design, and financial management. Health, social service, and recreation organizations employ home economists as specialists in nutrition, child, family, and consumer concerns.

You may enter the College of Home Economics as an open option or undeclared student or you may select a specific curriculum from the listing below.

#### Curricula and options

##### Child Development

- Child, Parent, and Community Services
- Growth and Development of Children
- Teaching Prekindergarten-Kindergarten Children

##### Family Environment

- Family Resource Management
- Family Services
- Housing and the Near Environment

##### Food and Nutrition

- Community Nutrition
- Dietetics
- Food Science
- Nutritional Science

##### Home Economics Education

- Adult Home Economics Education
- Home Economics Education

##### Home Economics Journalism

- Home Economics Journalism

#### Home Economics Studies

- General Studies in Home Economics
- International Studies in Home Economics

#### Institution Management

- Foodservice Management
- Hotel and Restaurant Management

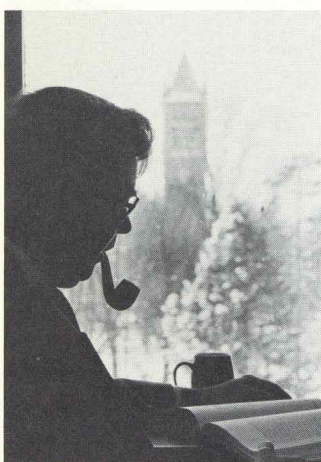
#### Textiles and Clothing

- Apparel Design and Patternmaking
- Fashion Merchandising
- Textiles and Clothing Related Science





## College of Sciences and Humanities



The College of Sciences and Humanities offers study opportunities in the arts, humanities, natural sciences, mathematical disciplines, and social sciences. Here, you as a student may acquire knowledge of the physical universe that surrounds us, the biological world of which we are a part, our individual nature, and the nature of human society. Emphasis is placed upon acquiring a broad modern liberal arts appreciation for human culture and the stuff of which it is composed. We are also concerned that our students develop their abilities to reason and communicate at a level appropriate for a world which grows increasingly complex and challenging.

Iowa State won early national recognition for strength in the basic sciences and recently gained recognition for excellent programs in the social sciences and humanities. Graduates of the college work in every possible arena—business, industry, government, and education—and career development is an important part of the programs in the College of Sciences and Humanities.

If you select a major and plan to teach in a secondary school, you may enroll in this college and take courses for certification in the College of Education.

You may indicate a specific major or program, or you may enter the college as an Open Option student without declaring a major. Career planning courses and programs are available to assist Open Option students in their search for majors.

If you want a preprofessional program, you have several options. If your interest is in human medicine, veterinary medicine, or law, you may enter as a Premed, Prevet Med, Prelaw, or Open Option student and later declare a major. For other preprofessional interests, you may enter in a major or as an Open Option student.

A School of Business Administration has been established at Iowa State. This school combines a variety of business-related curric-

ular offerings under a single administrative unit in the College of Sciences and Humanities.

### Majors

#### Biological sciences

Biochemistry  
Biology  
Biophysics  
Botany  
Microbiology  
Zoology

#### Business Administration

Accounting  
Business Administration  
Finance  
Management  
Marketing  
Transportation/Logistics

#### Communication

English (Composition)  
Journalism and Mass  
Communication  
Speech (Communicative Arts)

#### Humanities

English  
French  
German  
History  
Music (Bachelor of Arts degree)  
Philosophy  
Russian  
Spanish  
Speech (Dramatic Arts)

#### Mathematical disciplines

Computer Science  
Mathematics  
Statistics

#### Physical sciences

Biophysics  
Chemistry  
Earth Science  
Geology  
Metallurgy  
Meteorology  
Physics

#### Social and behavioral sciences

Anthropology  
Economics  
Political Science  
Psychology  
Sociology

#### Other majors

Distributed Studies\*  
Environmental Studies\*\*  
Individual Major\*  
International Studies\*\*  
Music (Bachelor of Music degree)  
Naval Science

#### Preprofessional programs

Cytotechnology  
Dentistry  
Human Medicine  
Law  
Medical Technology  
Nursing  
Optometry  
Physical Therapy  
Physician's Assistant  
Social Work  
Speech-Language Pathology  
and Audiology  
Theology  
Veterinary Medicine

#### Nondegree programs

Dental Hygiene  
Pharmacy

#### Other programs

Air Force Aerospace Studies  
American Indian Studies  
Classical Studies  
Linguistics  
Military Science  
Naval Science  
Religious Studies  
Teacher Education  
Women's Studies

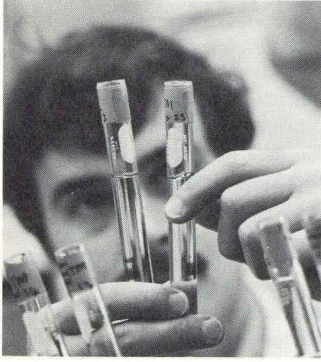
\*If your educational goals are broader or more diverse than can be best served by one of the regular majors, you may want to consider a Distributed Studies or Individual Major after your first year. Your adviser can help you prepare an application statement.

\*\*Available as second majors only. Students must be enrolled at Iowa State before applying for enrollment in these programs.





## College of Veterinary Medicine



Today's veterinarian works in all areas of animal and public health—in private practice, research in government and industry, teaching, military, and public health service.

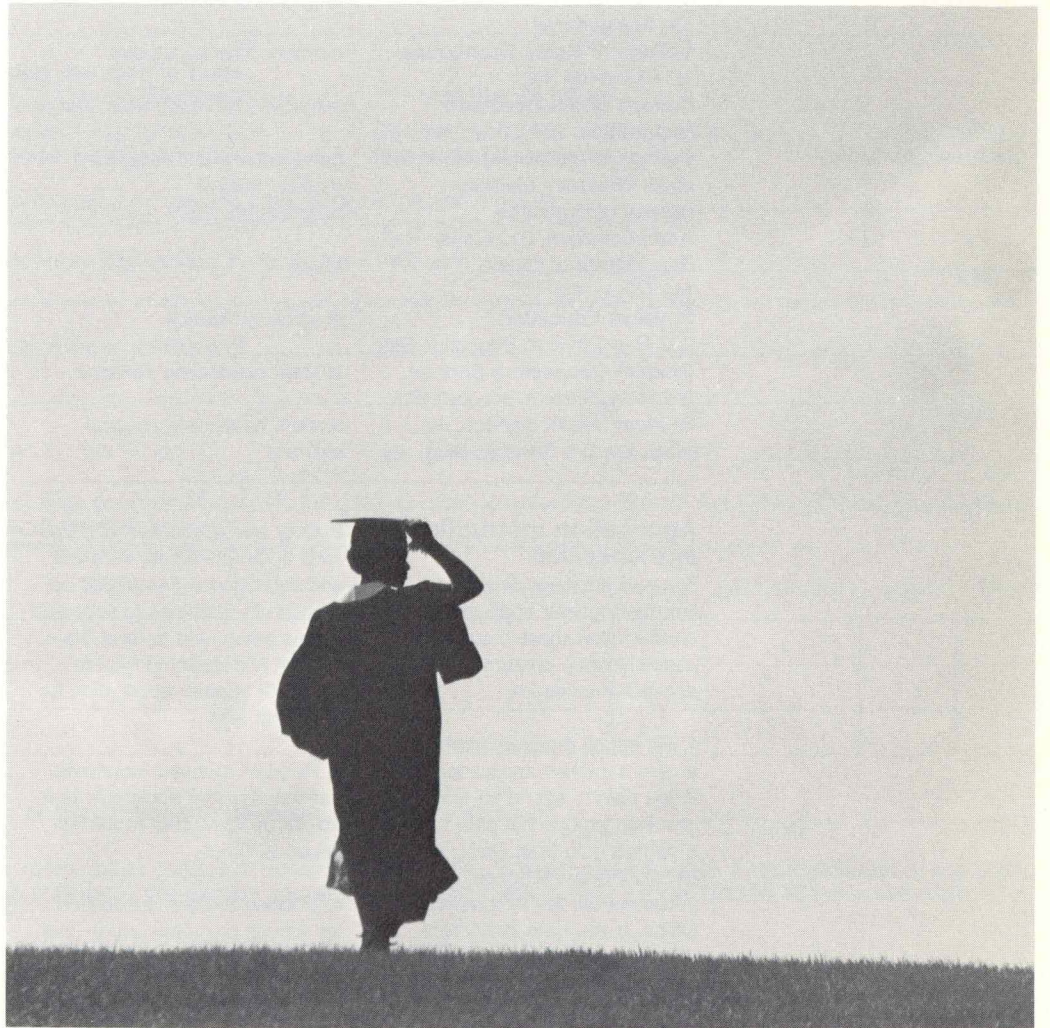
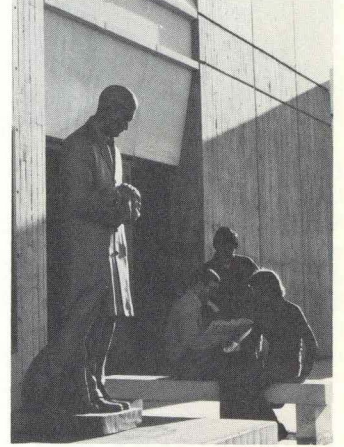
Preveterinary students enroll in the College of Agriculture or in the College of Sciences and Humanities. The curriculum requires 60 semester credits of preveterinary study and four years in the professional curriculum. You may combine a three-year preveterinary program with selected courses in the veterinary curriculum to earn a bachelor of science degree in the College of Agriculture or the College of Sciences and Humanities. In addition, concurrent DVM-graduate degree programs are open to qualified students.

Admission to the College of Veterinary Medicine<sup>®</sup> is limited and on a selective basis. Your performance in preveterinary study, general achievement, and admissions test scores will be considered by the admissions committee. Studies in the professional curriculum begin in the fall semester only.

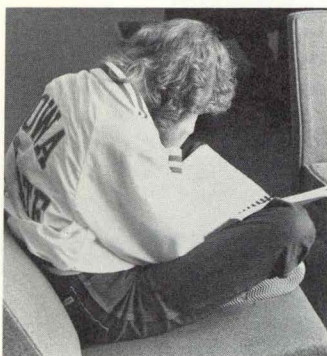
Residents of Iowa and certified residents of states having contracts with Iowa State for educating students in veterinary medicine have the best opportunities for admission into the college. If you are not a resident of Iowa or of a contract state (currently Nebraska, North Dakota, and South Dakota), you may wish to contact the College of Veterinary Medicine regarding your chances of admission.

### Departments

Veterinary Anatomy  
Veterinary Clinical Sciences  
Veterinary Microbiology and  
Preventive Medicine  
Veterinary Pathology  
Veterinary Physiology and  
Pharmacology







**Call toll-free**

Questions about admission? financial aid? housing? program of study? You can call the Admissions Office toll-free from anywhere in Iowa (1-800-262-3810) or from outside Iowa in the continental U. S. (1-800-247-3965).

**Where to inquire. . .**

- Admissions Office,**  
7 Beardshear Hall
- Department of Residence,**  
1215 Friley Hall
- University Student Apartments Office,** 100 University Village
- Off-Campus Housing,**  
1212 Friley Hall
- Financial Aid and Student Employment Office,**  
12 Beardshear Hall
- Office of Student Life,**  
2nd Floor, Student Services Bldg.
- Minority Student Affairs,**  
301 Beardshear Hall
- Greek Affairs Adviser,**  
2nd Floor, Student Services Bldg.
- Military Science,** 132 Armory
- Air Force Aerospace Studies,**  
146 Armory
- Naval Science,**  
130A Naval Armory
- College of Agriculture,**  
122N Curtiss Hall
- College of Design,**  
134 College of Design Bldg.
- College of Education,**  
E262 Quadrangle
- College of Engineering,**  
104 Marston Hall
- College of Home Economics,**  
121A MacKay Hall
- College of Sciences and Humanities,** 204 Carver Hall
- College of Veterinary Medicine,**  
2503 Veterinary Medicine
- School of Business Administration,** 310 Carver Hall
- Department of Music,**  
149 Music Hall
- Physical Education**  
232 New Physical Education Bldg.
- Student Counseling Service,**  
3rd Floor, Student Services Bldg.
- Student Health Service,** 1st Floor, Student Services Bldg.

**Application instructions and checklist**

To avoid errors or delays in considering your application, please follow these instructions carefully when preparing your application materials:

1. Fill out all required information on the furnished application form. If you plan to attend for less than one year and do not plan to earn a degree from Iowa State, you should request a Special Application from the Admissions Office. If you have previously attended Iowa State as a regular undergraduate student in a degree program, you should request a Reentry Application.

**for information about:**

- admission, application for\* admission, general information housing in residence halls
- housing in university-owned apartments
- privately-owned housing
- financial aid, student employment
- extracurricular activities, social life, religious organizations
- minority student programs and activities
- sororities and sorority rushing, fraternities and fraternity rushing
- Army ROTC
- Air Force ROTC
- Naval ROTC, Marine ROTC
- agricultural studies
- design studies
- education, teacher education and certification
- engineering studies
- home economics studies
- sciences and humanities studies
- preveterinary and veterinary medical studies
- business studies
- music
- physical education
- student counseling services
- student health and medical services

Hall, Iowa State University, Ames, Iowa 50011.

5. Instructions related to sex, handicap, and racial/ethnic information (items 6, 7, and 8 on the application): Responses to these requests for information are not required. Responses are requested in order for Iowa State University to comply with federal reporting requirements. This information will be kept confidential and will be used only for statistical reporting and on a need-to-know basis.

All U.S. citizens and permanent resident aliens (noncitizens who have been lawfully admitted for permanent residence and who hold a "green card" Form I-151) are requested to check one of the first five categories. Nonresident aliens should check the "nonresident alien" category.

**Please note** the following definitions before responding.

American Indian or Alaskan Native: A person having origins in any of the original peoples of North America, and who maintains cultural identification through tribal affiliation or community recognition.

Black, not of Hispanic Origin: A person having origins in any of the black racial groups of Africa.

White, not of Hispanic Origin: A person having origins in any of the original peoples of Europe, North Africa, or the Middle East.

Asian or Pacific Islander: A person having origins in any of the original peoples of the Far East, Southeast Asia, the Indian Subcontinent, or the Pacific Islands. This area includes, for example, China, Japan, Korea, the Philippine Islands, and Samoa.

Hispanic: A person of Mexican, Puerto Rican, Cuban, Central or South American, or other Spanish culture or origin, regardless of race.

Nonresident alien: A person who is not a citizen of the United States and who is in this country on a temporary basis and does not have the right to remain indefinitely.

2. Only one application is necessary. If you previously received and submitted a pre-printed application in response to your ACT scores being sent to Iowa State, it is not necessary for you to complete another application for the same term.

3. Request that your academic transcript(s) and applicable test results be forwarded to the Admissions Office.

4. Enclose the \$10 application fee (check or money order—not cash) with the completed application form and mail to: Admissions Office, 7 Beardshear



# application for undergraduate admission

Attn: Elve Everage

Iowa State University | Ames, Iowa 50011

Please tear here

1. Name \_\_\_\_\_  
(last) (first) (middle) (other last names used)
  
  2. Social Security number \_\_\_\_\_ Telephone number \_\_\_\_\_  
(area code) (number)
  
  3. Permanent home address \_\_\_\_\_  
(number & street) (city) (state) (zip code)  
(county) How long have you lived at your home address? \_\_\_\_\_  
(years) (months)
  
  4. Present address \_\_\_\_\_  
(if different from above) (number & street) (city) (state) (zip code)
  
  5. Country of citizenship \_\_\_\_\_ Type of visa (if not a U.S. citizen) \_\_\_\_\_
  
  6. Sex: Male  Female  Birth date \_\_\_\_\_ Church preference \_\_\_\_\_  
(month) (day) (year) (Response not required—requested by local churches)
  
  7. Racial/ethnic information (Optional—see instructions for explanation of categories.) American Indian or Alaskan Native  Black (not Hispanic)  White (not Hispanic)  Asian or Pacific Islander  Hispanic (Spanish American)  Nonresident alien  Prefer not to respond
  
  8. Do you have any physical or health limitations of which we should be aware so that the university may provide you with any assistance you might desire? Yes  No  If yes, please explain \_\_\_\_\_
  
  - (The above information is voluntary; no adverse treatment will result for failure to respond. Its purpose is to allow the university to carry out a voluntary program to overcome the effect of conditions which might result in limited participation by handicapped persons. It will be kept confidential and used in accordance with 45 CFR 84.)
  
  9. Name of parent  legal guardian  other relative  \_\_\_\_\_  
(check one) (last) (first) (middle)
  
  10. Address \_\_\_\_\_  
(number & street) (city) (state) (zip code)
  
  11. Please indicate the term and year you wish to enter:  
 Fall Semester, 19 \_\_\_\_  Spring Semester, 19 \_\_\_\_  Summer Term, 19 \_\_\_\_
  
  12. Which college do you wish to enter? Agriculture  Design  Education  Engineering   
 Home Economics  Sciences and Humanities  Veterinary Medicine
  
  13. If you have selected a curriculum, major, or general area of study, please indicate: \_\_\_\_\_  
(Please refer to the Colleges and Curricula section of this booklet for information concerning programs of study in the college of your choice.)
  
  14. Will you or have you graduate(d) from high school? Yes  No  When? \_\_\_\_\_  
(month) (year)  
(Please arrange to have an official high school transcript sent to our office if you are applying as a freshman or if you are a transfer applicant with less than one full year of college credit.)  
 High school from which you will or have graduate(d) \_\_\_\_\_  
 Address \_\_\_\_\_  
(number & street) (city) (state) (zip code)
  
  15. Have you or will you take the ACT? Yes  No  SAT? Yes  No  If yes, when? \_\_\_\_\_  
(Either may be submitted.) (month) (year)
  
  16. Will you have attended another college or university prior to the date you wish to enter Iowa State? Yes  No  If yes, give names and dates of all schools attended and degree(s) earned.  
(Please request that each college send an official transcript to our office. Incomplete information may result in denial of this application or dismissal.)
- | Name | City | From: month | year | To: month | year | Degree |
|------|------|-------------|------|-----------|------|--------|
|      |      |             |      |           |      |        |
|      |      |             |      |           |      |        |
|      |      |             |      |           |      |        |

Please also complete reverse side.



20. Have you applied for admission to Iowa State University before? Yes  No  If yes, for what term? \_\_\_\_\_

21. Have you ever attended Iowa State University? Yes  No  If yes, when \_\_\_\_\_

22. If you are presently enrolled in high school or college, please list the courses you are now taking and any additional courses you plan to complete prior to your entry at Iowa State. High school courses should be listed by subject and number of semesters or quarters they will be taken. College courses should be listed by name, number, and semester or quarter credits.  
*(Your schedule will be planned according to your transcript and this list; therefore, it is important for this information to be accurate. Please notify us immediately if you make any changes.)*

Course name	Course number	Sem./qtr. credits
<i>High School Example: Sr. Math (Anal. Geom/Calc)</i>	—	<i>First and second semesters</i>
<i>College Example: Western Civilization</i>	<i>History 301</i>	<i>4 semester credits</i>

*(Please attach an additional sheet if necessary.)*

23. Give a complete chronological statement covering the period from your high school graduation until your proposed entry date at Iowa State. This should include approximate dates, type of activity, and city and state. If you graduated from high school more than two years ago, you need to list activities only for the two-year period immediately preceding your proposed entry at Iowa State.

(from) Dates (to)	Activity (employment, education, etc.)	City and State

24. Do you wish to receive information concerning ROTC at Iowa State? Yes  No  If yes, for which program:  
 Air Force     Army     Navy (includes Marines)

25. Admission to the university does **not** guarantee you housing, and all students are expected to make their own housing arrangements. If you wish to receive information about university housing, please check: Yes  No  If yes, single  or married

26. If you are admitted, do we have your permission to release your high school rank in class to university recognized organizations or activities for membership selection purposes? Yes  No

I certify that all statements in this application are complete and true.

**Signature of applicant** \_\_\_\_\_ **Date** \_\_\_\_\_

This application must be accompanied by a \$10 check or money order payable to Iowa State University. Please do not send cash by mail.

**The application and all required transcripts should be sent to: Admissions Office  
 7 Beardshear Hall  
 Iowa State University  
 Ames, Iowa 50011**



**Iowa State University information request card**

Attn: Mr. Elve Everage

name (please print) \_\_\_\_\_ date \_\_\_\_\_

street \_\_\_\_\_ city \_\_\_\_\_ state \_\_\_\_\_ zip \_\_\_\_\_

high school \_\_\_\_\_

college or university (for transfer students) \_\_\_\_\_

Please send me the following information:

Curriculum information \_\_\_\_\_ (Please specify curriculum)

Other \_\_\_\_\_

If mailing card from outside the U.S.A., please use envelope.

**"Stay A Day at ISU" preregistration card**

(Please read the "Stay A Day" paragraph in the section on "admission" before returning card.)  
**This card is good for only one person and must be received in the Admissions Office two weeks prior to your visitation date.**

name \_\_\_\_\_ male \_\_\_\_\_ female \_\_\_\_\_ (please circle one)

present address \_\_\_\_\_ telephone \_\_\_\_\_

city \_\_\_\_\_ state \_\_\_\_\_ zip \_\_\_\_\_

Please circle the academic year you are currently in: High School 10 11 12 College 1 2 3 4

I will be coming \_\_\_\_\_ by myself \_\_\_\_\_ with a friend \_\_\_\_\_ (Your friend must submit his/her own card.)  
(friend's name)

I am interested in majoring in \_\_\_\_\_

I would like to attend "Stay A Day" on the following date (please circle **one**):

October 12, 1982      November 16, 1982      February 15, 1983      April 26, 1983  
November 2, 1982      February 1, 1983      March 1, 1983

I would like for you to arrange overnight housing for me.  
 I have made my own arrangements for overnight housing.

FOR OFFICE USE ONLY \_\_\_\_\_ card sent  
\_\_\_\_\_ letter sent

**High school students must obtain the following signatures:**

parent's signature \_\_\_\_\_

counselor's or principal's signature \_\_\_\_\_



Admissions Office  
7 Beardshear Hall  
Iowa State University  
Ames, Iowa 50011

information and application for prospective minority students