

cost

of living at iowa state university

What's it going to cost? That's usually the bottom line. Using actual experiences of students and allowing for inflation, the Admissions Office at Iowa State calculates student budgets as a guide to new graduate students. Based on these assessments, the chart at the right has been prepared.

Budgets differ, of course, depending upon residency, marital status, whether you are receiving some additional funds from your family as a dependent, and how close you are to completing your degree. When graduation approaches there may be additional expenses of typing and duplicating a thesis or dissertation and paying a fee for library costs, microfilming, and publishing the dissertation abstract.

Room and Board

Iowa State is proud of the room and board facilities it can offer. Rates are among the lowest in the Midwest. Unlike most other institutions, ISU provides accommodations especially for graduate students. There is on-campus housing for approximately 1,350 married students, 254 single graduate men, and 136 single graduate women. Buchanan Hall room rates per semester (as of June 1986) are \$538 for a double occupancy room or \$716 for a single. This includes air-conditioning during the warmer months (May-September). One- and two-bedroom furnished apartments are available; rents range from \$122 to \$335 per month. Apartments unfurnished except for range and refrigerator rent for \$101 to \$218 per month. The Admissions Office publication, *Information and Application for Prospective Graduate Students*, contains material about housing and lists addresses of offices from which more information may be obtained. It is imperative to make reservations early for these accommodations.

Rent for apartments and duplexes can range from \$250 to \$450, depending upon the location and size. Rent for a room in a home in Ames is generally between \$100 and \$175 per month. Apartments and houses are usually rented unfurnished. Rooming units tend to be furnished except for bed linens, towels, and study lamps. Utility charges are usually included in the rent for furnished rooms, but not for unfurnished apartments or houses. The Off-Campus Center provides information on available off-campus housing. Many leases

Estimated Costs at ISU for the Nine-Month Academic Year, 1987-88*

	Resident		Nonresident	
	Single student	Two-person family (one enrolled at ISU) ^b	Single student	Two-person family (one enrolled at ISU) ^b
Tuition and fees	\$1,852	\$1,852	\$5,106	\$5,106
Books and supplies	variable ^c	variable ^c	variable ^c	variable ^c
Room and board on campus	2,150	5,850	2,150	5,850
Miscellaneous (clothing, transportation, personal expenses, medical costs)	1,470	4,248	1,470	4,248
Total budget (not including books and supplies)	5,472	11,950	8,726	15,204
Scholarship credit for those on assistantship	926	926	926	926
Fee reduction (or equivalent scholarship) for nonresident student on assistantship	—	—	\$3,254	\$3,254
Net expenses for student on nine-month assistantship	\$4,546	\$11,024	\$4,546	\$11,024

*Many graduate students attend graduate school on a 12-month schedule, and many are awarded assistantships to cover the full year. Expenses for summer can be estimated by multiplying the net figures shown above by 35 percent.

^bStudents with children should add at least \$1,000 per year for each dependent child. If both parents will be enrolled, add an additional \$3,000 per year for day care expenses.

^cExpenses for books and supplies vary greatly among fields. Your department graduate program coordinator may be able to give you an estimate. Computer fees for students in the College of Engineering are an additional \$100 per semester. Students in other colleges pay \$10 to \$30 per computer science course, up to a maximum of \$60 per semester.

^dThese figures are for living in university housing and eating in the dining hall during the academic year. A single student living off campus who is sharing rent, food, and utility costs with a roommate could be expected to pay approximately \$3,080 per academic year.

are signed 8 to 12 weeks in advance. A visit to Ames well ahead of the time you plan to move here is the best way to locate a room or apartment.

Board at ISU costs \$537 per semester for 20 meals per week (dining rooms are closed Sunday evenings). Students have the option of eating all their meals in a residence hall dining room or of eating breakfast and dinner plus picking up a brown-bag lunch at breakfast to take along and eat on campus at noontime. Students may consult a dietitian in the Student Health Center about accommodating unusual dietary needs.

Board for students living off-campus may be obtained in residence hall dining rooms,



student apartments

STATE LIBRARY OF IOWA

DES MOINES, IOWA 50319

private restaurants, or the Memorial Union. For those wishing to prepare their own meals, Ames has supermarkets in every section of town, and food prices are comparable to other midwestern locations. During the summer and fall, a farmer's market at the old railroad depot provides garden-fresh vegetables, fruit, and home-made baked goods. Local farmers sometimes advertise pick-your-own strawberries, apples, and vegetables.

Health and Child Care

The Student Health Center, located in the Student Services Building on campus, provides medical services through its outpatient clinic. Emergency care is also available around the clock. Students and their spouses may receive free or reduced fee services by participation in a voluntary student program for health care. Those who do not elect to pay the voluntary fee still have access to Student Health Center facilities, but are charged for services. (These charges are lower than private practice rates.) The voluntary health fee program is not an insurance plan, but a health maintenance plan to complement the student's individual insurance coverage.

A group plan covering hospitalization, accident expenses, surgery, and maternity benefits is available to students. Rates are

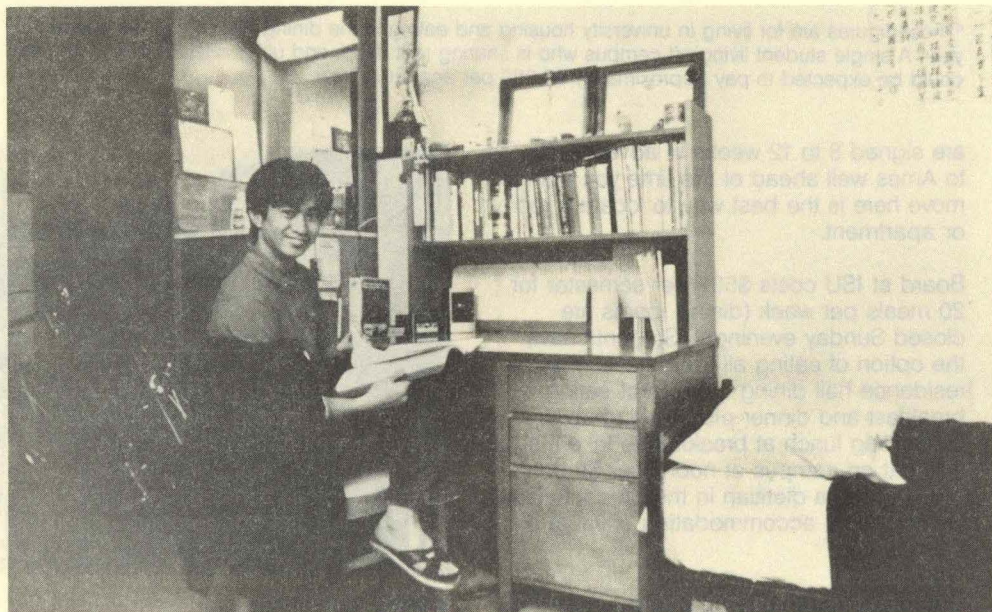
\$145 per year for single students, \$290 per year for a student and student spouse (both registered), and \$650 per year for a student, spouse, and children. The policy is usually for the 12-month period September 1 to the following August 31.

University-sponsored, nonprofit, and private child care programs (home and centers); preschools; and babysitting services are available in Ames to meet the diverse needs of parents and children. Rates for child care vary depending upon the age of the child. The average monthly cost for full-day care for infants is \$310, for toddlers (two to three years of age), \$275, and for three- to five-year-olds, \$245. After-school programs for school-age children average \$200 per month. Programs for infants and school-age children are relatively scarce. Some programs, particularly university-sponsored and subsidized nonprofit programs, have waiting lists.

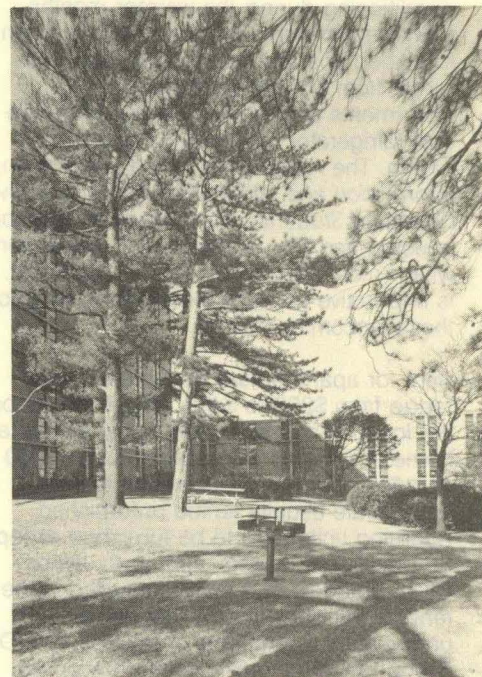
Information about specific programs and prices is included in *Child Care in Ames*, available without charge from the Ames Chamber of Commerce, 205 Clark Street, Ames, Iowa 50010 or from the Child Development Department, University Student Apartments, Dean of Students office, and YWCA on campus.

Financial Help

Educational expenses and financial aid are discussed in the Admissions Office brochure, *Information and Application for Prospective Graduate Students*, mentioned earlier. The ISU Financial Aid and Student Employment Office replies to inquiries from students about options available for financing a graduate education. In addition to graduate assistantships and other fellowships that are applied for through individual departments, there are ROTC Scholarships, National Direct Student Loans, university Long-Term Loans, Federally insured or Guaranteed Student Loans, university Short-Term Loans, college work-study jobs, and on- and off-campus employment. Information about financial assistance may be requested from the Financial Aid and Student Employment Office, 12 Beardshear Hall, Iowa State University, Ames, Iowa 50011 (515)/294-2223. This office can also provide copies of the ACT Family Financial Statement that must be filed in order to establish eligibility for work-study supported university assistantships. Individual departments can provide further information about these assistantships.



dormitory room



STATE LIBRARY OF IOWA



3 1723 02034 2952