

State of Iowa
1930

The
Iowa Capitol
and Park

PLEASE RETURN TO
IOWA LIBRARY COMMISSION

Statistics

Capitol located at Des Moines, 1857.
 Corner stone laid November 23, 1871.
 Capitol completed July 4, 1886.
 Total cost of Capitol \$3,296,256.
 Length of Capitol, 363 feet, 8 inches.
 Width east and west, 246 feet, 11 inches.
 Height to top of finial above dome, 275 feet.
 Diameter of rotunda, 66 feet, 8 inches.
 House of Representatives, size 79x91.4 feet, 49.9 to ceiling.
 Senate Chamber, size 58x91.4 feet, 41.9 to ceiling.
 Number of steps from sidewalk to top, 387.
 Area of ground around Capitol, including streets, 93 3/4 acres.
 Length of new tunnel from railroad yards, 3/4 mile.
 Foundation and basement built of Iowa stone. Main superstructure stone from Carroll county, and St. Genevieve, Missouri.

Twenty-nine kinds of domestic and imported marble used in finishing.
 Wood is mainly Iowa black walnut, butternut, cherry, oak and catalpa.
 Legislature meets odd numbered years in January, 90-day sessions.
 Members of Senate, 50; of the House of Representatives, 108.

The Historical Department has a large library of history and genealogy, a famous collection of autographs and photographs, many valuable historical relics, and antiquities, a vast natural history museum, a gallery of portraits of distinguished Iowa persons, a civil war collection, portraits and information regarding Iowa boys who died in the world war, and the public archives, consisting of millions of documents and records from the State Department for permanent preservation.

The Grounds and Monuments

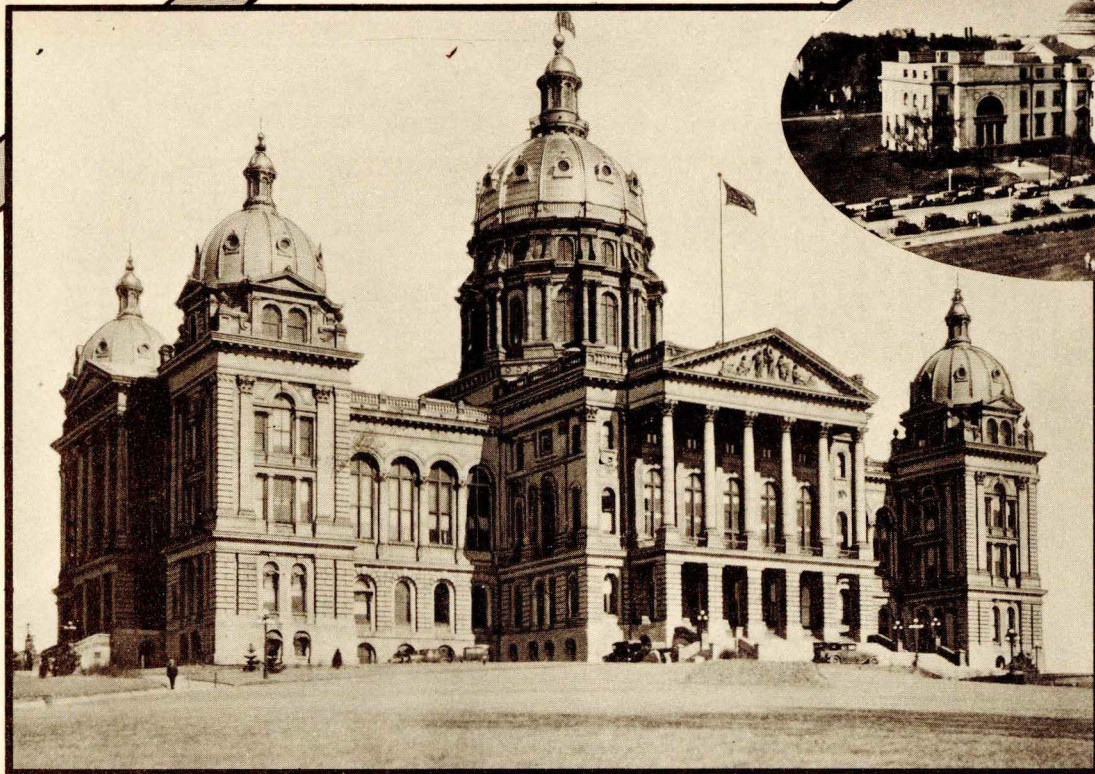
THE ORIGINAL SITE for the Capitol was given the state and covered about four blocks. In 1913 the legislature authorized a tax to pay for additional grounds and the park around the Capitol has been enlarged 85.4 acres (or 93 3/4 including streets), by the purchase of several hundred lots and residences and business houses thereon. The work of clearing and remodeling is still in progress. When completed it will be the largest and most beautiful setting for a state Capitol in the world.

The Soldiers' and Sailors' Monument erected in 1889-90 is 145 feet high and cost \$150,000. It was designed by Harriet A. Ketcham of Mt. Pleasant. It has fine bronze figures and medallions of Iowa soldiers and sailors and battle scenes.

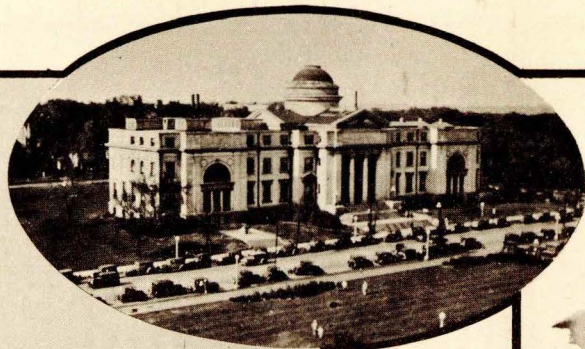
The Allison Memorial, near by, was constructed in honor of the late Senator W. B. Allison of Dubuque and is a fine work of art.

The battle flags of Iowa regiments in the civil war and in the Spanish-American war are preserved in niches in the rotunda of the Capitol. The monument west of the Capitol on Ninth street, represents "The Pioneers" and is cast in bronze.

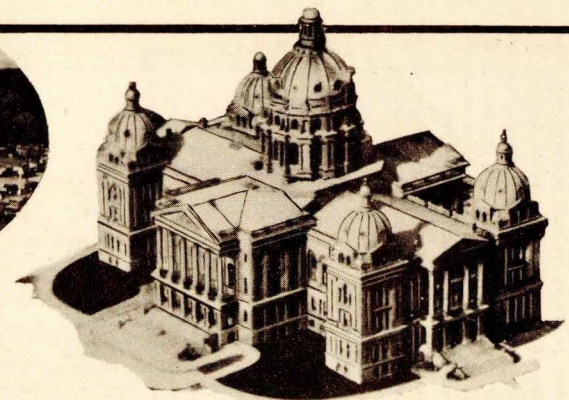
The old guns located on the grounds were taken in the Spanish-American war. The bronze gun in front of the Historical building was taken from a Spanish gun ship.



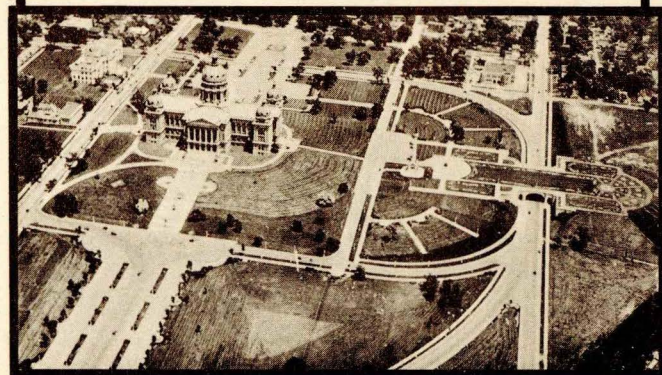
THE IOWA CAPITOL



HISTORICAL
BUILDING



FROM THE AIR



CAPITOL PARK FROM THE AIR



"WESTWARD" — THE BLASHFIELD PAINTING AT THE HEAD OF THE GRAND STAIRWAY, IOWA CAPITOL

Decorations of the Capitol

THE HOUSE AND NORTH WING, and the main corridors and rotunda were redecorated after the fire of January 4, 1904. The original decorations are still in the Senate.

The twelve statues high within the rotunda represent History, Science, Law, Fame, Art, Industry, Peace, Commerce, Agriculture, Victory, Truth, Justice.

The eight lunettes, or half-moon-shaped paintings surrounding the rotunda are the work of Kenyon Cox, a famous American artist, who was paid \$8,000 for the same. They are entitled by the artist: Hunting, Herding, Agriculture, The Forge, Commerce, Education, Science, Art. They are allegorical and indicate the progress of civilization.

Over the main stairway at the east end is the large painting entitled "Westward," the work of Edwin H. Blashfield of New York, and this was placed at a cost of \$10,000. It is regarded as one of the notable American decorative pictures and it shows a pioneer group traveling from the fields of plenty to the newer lands of the west to make homes.

Above the large picture are six mosaics, designed by Frederick Dielman of New York, and made in Venice. The colors are worked out in colored stone pieces and are indestructible. The subjects represented are Defense, Charities, the Executive, the Legislative, the Judiciary and Education. These cost the State \$10,000. They are among the finest and largest in America.

The largest reproduction photograph in the world hangs in the south corridor. The picture, which is 26 feet long and 6 feet high, was taken by W. T. Showers, of the 168th Infantry, upon their return from France in 1919.

Use of the State Capitol

THE CAPITOL WAS DEDICATED in January, 1884, when the General Assembly first met in the new halls, having formerly met in a small building located where the Soldiers' and Sailors' Monument now stands. Not all the offices were occupied for more than two years thereafter. On the main floor are located the Supreme Court rooms and the Judges' Chambers. On this floor are also located the offices of the Governor, Secretary of State, Auditor of State, Treasurer of State, Superintendent of Public Instruction, Attorney General, Clerk of Supreme Court, Railroad Commission and Secretary of Agriculture.

The House and Senate chambers are on the second floor. An electric voting machine has been installed in the House which supplants the old method of roll call. Between the House and Senate are housed two departments of the State Library, the Law department, and the Economics and Sociology department. The Iowa State Library is one of the most complete in the country.

Owing to the crowded condition of the Capitol, a former schoolhouse on Penn avenue and Grand avenue and two former residences on Des Moines street, are used for some of the state offices. The Insurance Department is located in the Southern Surety Building, Sixth Avenue at Mulberry St.

The document storage and warehouse north of the Capitol across Grand avenue is filled with books for preservation and future use. The heating plant at the rear supplies heat for the Capitol and Historical buildings, Board of Health and the Flats. A new heating plant will be constructed on the railroad tracks and a tunnel ten blocks long will carry the heat to the buildings.

Historical Building and Library

THE HISTORICAL, MEMORIAL AND ART BUILDING is 260 by 110 feet in size and was commenced in 1896, at first as a home for the Aldrich collection of historical matter. It is occupied by the Historical Department, two departments of the State Library, and the Library Commission.

STATE LIBRARY OF IOWA



3 1723 02104 3047