

**An Overview of Program Eligibility and Funding Streams
for the
Iowa Department of Human Services**

Prepared By:

Dianne Milobar and Mary Reavely
Division of Organizational Planning
Iowa Department of Human Services

Michael V. Reagen, Ph.D., Commissioner

May, 1984

TABLE OF CONTENTS

	<u>PAGE</u>
I. FOREWORD	1
MISSION AND ORGANIZATION OF THE IOWA DEPARTMENT OF HUMAN SERVICES.	2
TABLE OF ORGANIZATION.	3
OVERVIEW OF HUMAN SERVICES PROGRAMS AND ELIGIBILITY.	4
OVERVIEW OF FUNDING OF HUMAN SERVICES PROGRAMS	5
STRUCTURE OF PAPER	7
II. SECTION I. SOCIAL SERVICES AND COMMUNITY SERVICES DIVISIONS	8
A. DIVISIONAL RESPONSIBILITIES.	9
B. ELIGIBILITY REQUIREMENTS MATRIX.	10
C. BASIC ELIGIBILITY CRITERIA	13
D. FUNDING STREAMS AND CLIENT COUNTS.	32
E. FUNDING FOR ELIGIBILITY CATEGORIES	40
F. FUNDING SOURCE SUMMARY	41
III. SECTION II. DIVISION OF MENTAL HEALTH, MENTAL RETARDATION AND DEVELOPMENTAL DISABILITIES.	42
A. DIVISIONAL RESPONSIBILITIES.	43

TABLE OF CONTENTS (CONT'D)

	<u>PAGE</u>
B. CRITERIA FOR FUNDING COMMUNITY-BASED SERVICES	45
C. FUNDING SOURCES	49
D. FUNDING BY SOURCE	53
<u>APPENDIX</u>	58
PROGRAM/SERVICE DEFINITIONS FOR THE DIVISIONS OF SOCIAL SERVICES AND COMMUNITY SERVICES	59
COMMUNITY-BASED SERVICE DEFINITIONS FOR THE DIVISION OF MENTAL HEALTH, MENTAL RETARDATION AND DEVELOPMENTAL DISABILITIES.	70

FOREWORD

THE DEPARTMENT OF HUMAN SERVICES IS DEDICATED TO IMPROVING THE WELL-BEING OF IOWA'S POOR, NEGLECTED, ILL AND INSTITUTIONALIZED. PEOPLE COME TO THE DEPARTMENT BECAUSE OF THEIR NEEDS, AND STAFF PROVIDE A CONTINUUM OF SERVICES BASED ON ELIGIBILITY REQUIREMENTS AND FUNDING LEVELS TO HELP CLIENTS AT ALL LEVELS AND STAGES OF THEIR PROBLEMS. THE PURPOSE OF THIS PAPER IS TO PROVIDE AN OVERVIEW OF THE PROGRAMS OFFERED, PERSONS SERVED, ELIGIBILITY FACTORS, AND FUNDING SOURCES AND AMOUNTS.

MISSION AND ORGANIZATION OF THE IOWA DEPARTMENT OF HUMAN SERVICES

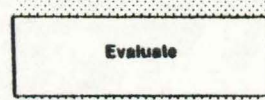
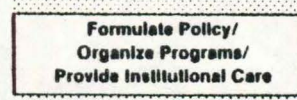
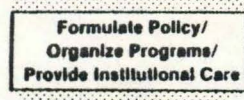
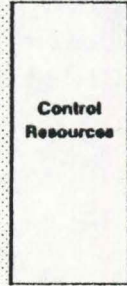
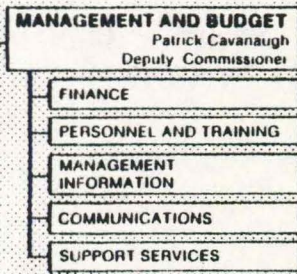
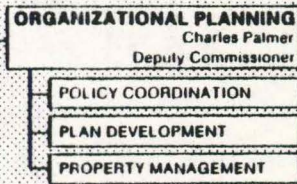
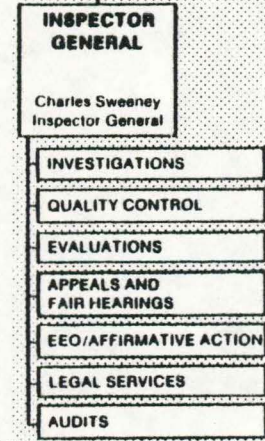
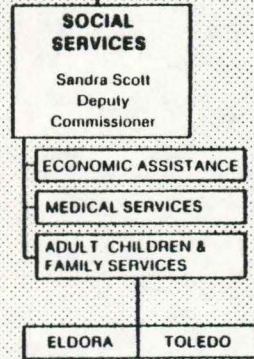
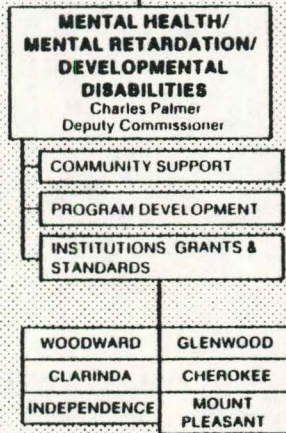
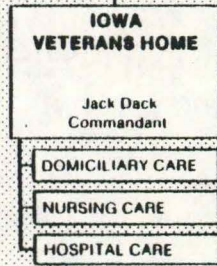
"THE IOWA DEPARTMENT OF HUMAN SERVICES (DHS) EXISTS TO PROVIDE A CONTINUUM OF INTEGRATED HUMAN SERVICES TO IOWANS WHO EXPERIENCE PERSONAL, ECONOMIC AND SOCIAL PROBLEMS IN ORDER TO RELIEVE THEIR CONSTRAINING CONDITIONS AND DEVELOP AND ENHANCE THEIR INDIVIDUAL PRODUCTIVITY AND FAMILY LIFE."

THE DEPARTMENT OVERSEES THE STATE'S MAJOR HUMAN SERVICE PROGRAMS FOR CHILDREN, ADULTS AND FAMILIES IN NEED. DHS STRESSES INTEGRATION TO ACHIEVE ITS GOAL OF OFFERING A HOLISTIC APPROACH TO MEETING CLIENT NEEDS. THROUGH INTEGRATION, DEPARTMENT RESOURCES CAN BE CONCENTRATED ON HUMAN SERVICE NEEDS COMMON TO ALL OF OUR CLIENTS WHETHER THEY RECEIVE WELFARE OR ARE RESIDENTS OF A MENTAL HEALTH INSTITUTE.

DHS STRESSES INTEGRATION TO ACHIEVE ITS GOALS AS AN UMBRELLA AGENCY. TO IMPROVE INTEGRATION, THE DEPARTMENT HAS ESTABLISHED A MATRIX ORGANIZATIONAL STRUCTURE. THE MATRIX ORGANIZATION IDENTIFIES RESPONSIBILITIES FOR EACH DIVISION WITHIN THE DEPARTMENT AS WELL AS SHARED RESPONSIBILITIES WHICH CUT ACROSS SEVERAL DIVISIONS, AND GUIDES THE APPROPRIATE DECISION-MAKERS AND STAFF IN WORKING TOGETHER TO DEVELOP AND CARRY OUT SERVICES.

UNDER MATRIX ORGANIZATION, DIVISIONS ARE GROUPED ACCORDING TO RESPONSIBILITY:

- POLICY FORMULATION/PROGRAM ORGANIZATION/INSTITUTIONAL CARE
MENTAL HEALTH/MENTAL RETARDATION/DEVELOPMENTAL DISABILITIES
SOCIAL SERVICES
VETERANS HOME
- EVALUATION
INSPECTOR GENERAL
- COMMUNITY SERVICE DELIVERY
COMMUNITY SERVICES
- PLANNING AND COORDINATION
ORGANIZATIONAL PLANNING
- MAXIMIZING AND CONTROLLING DATA, DOLLARS AND RESOURCES
MANAGEMENT AND BUDGET



OVERVIEW OF HUMAN SERVICES PROGRAMS AND ELIGIBILITY

THE DEPARTMENT OVERSEES THE STATE'S MAJOR HUMAN SERVICES PROGRAMS FOR CHILDREN, ADULTS, AND FAMILIES IN NEED. THESE PROGRAMS INCLUDE:

- FINANCIAL ASSISTANCE SUCH AS AID TO DEPENDENT CHILDREN, FOOD STAMPS AND TITLE XIX MEDICAL SERVICES;
- JUVENILE INSTITUTIONS;
- SERVICES FUNDED BY THE BLOCK GRANT SUCH AS CHILD AND ADULT PROTECTION, DAY CARE, FOSTER CARE, TRANSPORTATION AND ADOPTION;
- VETERANS HOME;
- INSTITUTIONS FOR THE MENTALLY ILL AND MENTALLY RETARDED; AND
- SERVICES FOR THE DEVELOPMENTALLY DISABLED.

THESE PROGRAMS ARE DESIGNED TO MEET THE NEEDS OF SPECIFIC GROUPS OF CLIENTS. FOR EXAMPLE, AID TO DEPENDENT CHILDREN (ADC) EXISTS TO MEET THE NEEDS OF CHILDREN DEPRIVED OF A PARENT'S CARE OR SUPPORT. THE STATE HOSPITAL-SCHOOLS MEET THE NEEDS OF THE RETARDED WHO REQUIRE SPECIALIZED SERVICES. WHERE CLIENT NEEDS SERVE AS CRITERIA FOR ELIGIBILITY, THERE ALSO MAY BE OTHER REQUIREMENTS OF ELIGIBILITY, SUCH AS AGE, CITIZENSHIP, INCOME AND RESOURCES LIMITATIONS.

OVERVIEW OF FUNDING OF HUMAN SERVICES PROGRAMS

THE LARGE NUMBER OF PROGRAMS PROVIDED THROUGH THE DEPARTMENT OF HUMAN SERVICES ARE FUNDED BY FEDERAL AND STATE APPROPRIATIONS, LOCAL, PRIVATE AND THIRD PARTY SOURCES, AND CLIENT PARTICIPATION. THESE VARIOUS SOURCES OR "STREAMS" FLOW TOGETHER TO FUND THE PROGRAMS AND SERVICES OFFERED THROUGH THE DEPARTMENT.

THE FOLLOWING ARE SOME EXAMPLES OF FUNDING SOURCES FOR SERVICES OFFERED BY THE DIVISIONS OF SOCIAL SERVICES AND COMMUNITY SERVICES:

- FEDERAL FUNDING
 - SOCIAL SERVICES BLOCK GRANT (TITLE XX)
 - CHILD WELFARE (IV-B)
 - AID TO DEPENDENT CHILDREN (ADC) FOSTER CARE AND SUBSIDIZED ADOPTION (IV-E); AND WORK INCENTIVE (IV-C)

- STATE APPROPRIATED FUNDING
 - HOME-BASED SERVICES
 - COMMUNITY-BASED SERVICES
 - FOSTER CARE
 - MEDICAL ASSISTANCE APPROPRIATION
 - INSTITUTIONAL APPROPRIATION
 - STATE SUPPLEMENTARY ASSISTANCE

- COUNTY FUNDING
 - 25% MATCH FOR FEDERAL AND STATE FUNDS FOR LOCAL PURCHASE SERVICES

IN THIS PAPER, THE FUNDING STREAM CHARTS ADDRESS THE SOURCES AND AMOUNTS OF FUNDING FOR STATE FISCAL YEAR 1983 FOR ALL PROGRAMS AND SERVICES AS WELL AS THE AVERAGE NUMBER OF CLIENTS SERVED MONTHLY BY PROGRAM.

OVERVIEW OF FUNDING OF HUMAN SERVICES PROGRAMS (CONT'D)

THE FOLLOWING ARE SOME EXAMPLES OF FUNDING SOURCES CHANELED THROUGH THE DIVISION OF MENTAL HEALTH, MENTAL RETARDATION AND DEVELOPMENTAL DISABILITIES:

- FEDERAL FUNDING
 - MENTAL HEALTH PORTION OF THE ALCOHOL, DRUG ABUSE AND MENTAL HEALTH BLOCK GRANT
 - COMMUNITY SUPPORT SERVICES GRANT
 - DEVELOPMENTAL DISABILITIES GRANT

- STATE APPROPRIATED FUNDING
 - COMMUNITY MENTAL HEALTH AND MENTAL RETARDATION SERVICES FUND COMPRISED OF A GENERAL ALLOCATION PORTION (80%) WHICH IS PRORATED BY FORMULA AND GOES DIRECTLY TO THE COUNTIES AND A SPECIAL ALLOCATION PORTION THAT IS GRANTED BY THE MENTAL HEALTH AND MENTAL RETARDATION COMMISSION.
 - GENERAL FUND FOR THE MENTAL HEALTH INSTITUTES AND STATE HOSPITAL-SCHOOLS

- COUNTY FUNDING
 - USED FOR MENTAL HEALTH AND MENTAL RETARDATION SERVICES
 - USED FOR INPATIENT TREATMENT AT THE STATE INSTITUTIONS

STRUCTURE OF PAPER

THE PREFATORY SECTION PROVIDED AN OVERVIEW OF THE DEPARTMENT WITH THE MISSION STATEMENT, AN EXPLANATION OF THE ORGANIZATION OF THE DEPARTMENT AND AN OVERVIEW OF PROGRAMS, ELIGIBILITY AND FUNDING.

SECTION I ON THE DIVISIONS OF SOCIAL SERVICES AND COMMUNITY SERVICES FIRST PROVIDES AN OVERVIEW OF THE BASIC ELIGIBILITY CRITERIA FOR ALL PROGRAMS IN MATRIX FORM. SECONDLY, BASIC ELIGIBILITY CRITERIA ARE GIVEN IN DETAILED CHARTS FOR THE TWO DIVISIONS. THIRDLY, PROGRAM FUNDING SOURCES, AMOUNTS AND TOTALS ARE PROVIDED IN THE FUNDING STREAM CHART FOR FISCAL YEAR 1983 FOR THE DIVISIONS OF SOCIAL SERVICES AND COMMUNITY SERVICES.

SECTION II ON THE DIVISION OF MENTAL HEALTH, MENTAL RETARDATION AND DEVELOPMENTAL DISABILITIES PROVIDES THE CRITERIA FOR THE FUNDING OF COMMUNITY-BASED SERVICES. FUNDING SOURCES, AMOUNTS AND TOTALS FOR FISCAL YEAR 1983 ARE GIVEN IN THE FUNDING STREAM CHART FOR THE DIVISION OF MENTAL HEALTH, MENTAL RETARDATION AND DEVELOPMENTAL DISABILITIES.

THE PROGRAMS AND SERVICES OFFERED THROUGHOUT THE DEPARTMENT ARE DESCRIBED BRIEFLY IN THE APPENDIX. IT SERVES AS A REFERENCE FOR PROGRAM/SERVICE DEFINITIONS FOR THIS PAPER.

ALTHOUGH THE DEPARTMENT FULLY INTEGRATES SERVICES TO CLIENTS, THIS PAPER GROUPS TOGETHER PROGRAMS ADMINISTERED BY THE DIVISIONS OF SOCIAL SERVICES AND COMMUNITY SERVICES BECAUSE THEIR OPERATIONS REVOLVE AROUND THE SAME PROGRAMS, I.E., THE SOCIAL SERVICES DIVISION DEVELOPS POLICY AND ADMINISTERS THE JUVENILE INSTITUTION PROGRAMS AND THE COMMUNITY SERVICES DIVISION DELIVERS ALL OF THE OTHER SERVICES. AS THE DIVISION OF MH/MR/DD DEVELOPS POLICY, ADMINISTERS INSTITUTIONAL SERVICES AND PLANS FOR THE MH/MR/DD SYSTEM, IT IS TREATED SEPARATELY IN THIS PAPER.

SECTION I

SOCIAL SERVICES AND COMMUNITY SERVICES DIVISIONS

F-003T10

DIVISIONAL RESPONSIBILITIES

THE DIVISIONS OF SOCIAL SERVICES AND COMMUNITY SERVICES ARE RESPONSIBLE FOR DEVELOPING AND MANAGING SOME OF THE DEPARTMENT'S PROGRAMS AND SERVICES.

DIVISION OF SOCIAL SERVICES

THE DIVISION OF SOCIAL SERVICES CONTAINS THREE BUREAUS: ECONOMIC ASSISTANCE; MEDICAL SERVICES; AND ADULT, CHILDREN AND FAMILY SERVICES. THE DIVISION IS RESPONSIBLE FOR WRITING POLICY AND DEVELOPING PROGRAMS FOR THE FOLLOWING: ECONOMIC ASSISTANCE INCLUDING ADC, WIN AND FOOD STAMPS; MEDICAL SERVICES UNDER TITLE XIX; STATE SUPPLEMENTARY ASSISTANCE; AND SERVICE PROGRAMS TO ADULTS, CHILDREN AND FAMILIES. THESE SERVICES INCLUDE PROGRAMS, SUCH AS CHILD PROTECTIVE, FOSTER CARE, TRANSPORTATION, ADOPTION, AND DAY CARE, AND TWO JUVENILE INSTITUTIONS.

DIVISION OF COMMUNITY SERVICES

THE DIVISION OF COMMUNITY SERVICES IS RESPONSIBLE FOR THE DELIVERY OF ALL PROGRAMS DEVELOPED BY THE DIVISION OF SOCIAL SERVICES THROUGH AN EIGHT-DISTRICT STRUCTURE. THE DIRECTOR OF THE DIVISION OF COMMUNITY SERVICES IS ALSO RESPONSIBLE FOR CHILD SUPPORT AND FOSTER CARE RECOVERY PROGRAMS, FOR VOLUNTEER SERVICES IN THE COMMUNITY, AND FOR ASSISTING IN THE DELIVERY OF COMMUNITY MENTAL HEALTH/MENTAL RETARDATION SERVICES UNDER THE DEPARTMENT'S MATRIX ORGANIZATION.

ELIGIBILITY REQUIREMENTS MATRIX

FOR THE

SOCIAL SERVICES AND COMMUNITY SERVICES DIVISIONS

THE ELIGIBILITY REQUIREMENTS MATRIX (PAGE 11) GIVES AN OVERVIEW OF THE PROGRAMS AND SERVICES OFFERED BY THE DIVISIONS OF SOCIAL SERVICES AND COMMUNITY SERVICES. IT LISTS THE PROGRAMS AND SERVICES IN ALPHABETICAL ORDER IN THE LEFT-HAND COLUMN; ELIGIBILITY FACTORS (AGE, CITIZENSHIP, ETC.) ARE DISPLAYED ACROSS THE TOP OF THE PAGE. WHERE AN ELIGIBILITY FACTOR PERTAINS, THE NUMBER OF THE CHART LISTING THE REQUIREMENT IS GIVEN. FOR EXAMPLE, FOR ADC, THERE IS AN ELIGIBILITY REQUIREMENT FOR AGE AND IT IS DISCUSSED IN CHART 2, IN-HOME SERVICES. THEREFORE, CHART 2 IS NOTED ON THE ELIGIBILITY REQUIREMENTS MATRIX. THE CHARTS, 1 THROUGH 4, REFERRED TO ABOVE ARE A COMPARISON OF PROGRAM ELIGIBILITY FACTORS AND FOLLOW THE ELIGIBILITY REQUIREMENTS MATRIX IN THIS REPORT. THEY CAN BE LOCATED ON PAGES 15 TO 31.

Program	Age	Citizen- ship	Res.	Living Arrange- ments	Soc. Sec. #	Insti- tution Medical	Insti- tution Other	Empl. Regis- tration	Support Payment	Resource Limits	Resource Exempt	Income Limits	Income Exempt	Other
A.D.C.	2	2	2	2	2	2	2	2	2	2	2	2	2	2
Admin. Support for Volunteers	-	-	-	-	-	-	-	-	-	-	-	-	-	4
Adoption	1	-	1	-	-	-	-	-	-	-	-	-	-	-
Adult Day Care	2	-	2	-	-	2	2	-	-	-	-	2	2	-
Aid to Indians	2	2	2	2	-	2	2	-	-	2	2	2	2	-
Assistance to Child Care Centers	4	-	4	-	-	-	-	-	-	-	-	-	-	4
Charitable Institutions	-	-	-	-	-	-	-	-	-	-	-	-	-	4
Child Abuse Prevention	4	-	4	-	-	-	-	-	-	-	-	-	-	4
Child Day Care	2	-	2	-	-	2	2	-	-	-	-	2	2	-
Child Protective	2	-	-	-	-	-	-	-	-	-	-	-	-	2
Child Support Recovery	-	-	-	-	-	-	-	-	-	-	-	-	-	4
Client Assessment/Case Management	-	-	2	2	-	2	-	-	-	-	-	2	2	2
Commodity Supplemental Foods	3	-	3	3	-	3	3	-	-	3	3	3	3	-
Coordinated Manpower Service Program (CMS)	2	2	2	-	2	2	2	2	2	2	2	2	2	2
County and Multi-County Juvenile Detention Shelter Care Reimbursement	4	-	4	-	-	-	-	-	-	-	-	-	-	4
Court-Ordered Client Oversight	2	-	2	-	-	2	2	-	-	-	-	-	-	2
Dependent Adult Abuse	2	-	-	-	-	-	-	-	-	-	-	-	-	2
Displaced Homemaker	-	-	-	-	-	-	-	-	-	-	-	-	-	2
Domestic Abuse	-	-	-	-	-	-	-	-	-	-	-	-	-	2
Elderly Feeding Project	3	-	3	3	-	3	3	-	-	3	-	3	3	-
Emergency Food Distribution Program (Title I)	-	-	4	-	-	-	-	-	-	-	-	-	-	4
Family Life Home	1	1	1	1	1	1	1	-	-	1	1	1	1	1
Family Planning	2	2	2	-	1	2	2	-	-	2	2	2	2	-
Federal Surplus Food	3	3	3	3	-	3	3	-	-	-	-	3	3	-
Food Stamps	3	3	3	3	3	3	3	3	3	3	3	3	3	-
Foster Care	1	-	-	-	1	1	1	1	1	1	1	1	1	1
Health Related	-	-	2	-	-	2	2	-	-	-	-	2	2	-
Hiring for Day Care	-	-	-	-	-	-	-	-	-	-	-	-	-	4
Home-Based Treatment	2	-	2	2	-	2	2	-	-	-	-	-	-	-
Home Management	-	-	-	-	-	2	2	-	-	-	-	-	-	-

- 1 = Out-of-Home Placement, Chart 1, p. 15
2 = In-Home Services, Chart 2, p. 20
3 = Food Programs, Chart 3, p. 25
4 = Grants, Special Programs, Chart 4, p.30

ELIGIBILITY REQUIREMENTS MATRIX

Program	Age	Citizen-ship	Res.	Living Arrangements	Soc. Sec. #	Insti-tution Medical	Insti-tution Other	Empl. Regis-tration	Support Payment	Resource Limits	Resource Exempt	Income		Other
												Limits	Exempt	
Individual Education & Training Plan (IETP)	2	2	2	2	2	2	2	2	2	2	2	2	2	2
Information and Referral	-	-	-	-	-	-	-	-	-	-	-	-	-	-
In-Home Health Related Care	2	2	2	-	-	2	2	-	-	2	2	2	2	-
Intermediate Care Facility (ICF)	1	1	1	1	1	1	1	-	-	1	1	1	1	1
Intermediate Care Facility for Mentally Retarded (ICF-MR)	1	1	1	1	1	1	1	-	-	1	1	1	1	1
Juvenile Community-Based	4	-	4	-	-	-	-	-	-	-	-	-	-	4
Juvenile Institutions	1	1	1	1	1	-	1	-	-	-	-	-	-	1
Medical Assistance (Title XIX)	-	2	2	2	2	2	2	-	-	2	2	2	2	2
Mental Health Services	2	-	2	2	-	2	2	-	-	-	-	2	2	-
Refugee Programs	-	2	2	2	1	2	2	2	-	2	2	2	2	2
Residential Care Facility (RCF)	1	1	1	1	1	1	1	-	-	1	1	1	1	1
Residential Care Facility for Mentally Retarded (RCF-MR)	1	1	1	1	1	1	1	-	-	1	1	1	1	1
Residential Care Services	1	1	1	1	1	1	1	-	-	-	-	1	1	1
Residential Treatment Services	1	1	1	1	1	1	1	-	-	-	-	1	1	1
Runaways	1	1	1	-	-	-	1	-	-	-	-	-	-	-
Sheltered Work	2	-	-	-	1	2	2	-	-	-	-	2	2	-
Skilled Nursing Facilities (SNF)	1	1	1	1	1	1	1	-	-	1	1	1	1	1
State Cases	4	-	2	-	-	2	2	-	-	-	-	2	2	4
SSI-related; Dep. Person, Blind	2	2	2	2	-	2	2	-	-	2	2	2	2	2
Subsidized Adoption	1	1	1	1	1	1	-	1	-	-	1	1	1	1
Transportation	-	-	2	-	-	2	2	-	-	-	-	2	2	-
UP - CWEP	2	2	2	2	1	2	2	2	2	2	2	2	2	2
Veterans Home	1	1	1	1	-	1	1	-	-	-	-	1	-	1
Work Incentive Program (WIN)	2	2	2	-	1	2	2	2	-	2	2	2	2	2
Work Activity	2	-	-	-	1	2	2	-	-	-	-	2	2	2

- 1 = Out-of-Home Placement, Chart 1, p. 15
- 2 = In-Home Services, Chart 2, p. 20
- 3 = Food Programs, Chart 3, p. 25
- 4 = Grants, Special Programs, Chart 4, p.30

G1002B03/4

BASIC ELIGIBILITY CRITERIA

FOR THE

SOCIAL SERVICES AND COMMUNITY SERVICES DIVISIONS

THE PROGRAMS OFFERED BY THE DEPARTMENT FALL WITHIN FOUR GENERAL CATEGORIES: 1) OUT-OF-HOME PLACEMENT; 2) IN-HOME SERVICES; 3) FOOD PROGRAMS; AND 4) GRANTS AND SPECIAL PROGRAMS. THESE FOUR CATEGORIES ARE SHOWN IN THE COMPARISON OF PROGRAM ELIGIBILITY FACTORS, CHARTS 1 THROUGH 4 (PAGES 15 TO 31).

CHART 1, OUT-OF-HOME PLACEMENT (PAGE 15) DEALS WITH PROGRAMS AND SERVICES PROVIDED TO CHILDREN AND ADULTS ON A 24-HOUR OUT-OF-HOME PLACEMENT BASIS. CHART 1 PROGRAMS ARE: ADOPTION, SUBSIDIZED ADOPTION, FAMILY LIFE HOME, FOSTER CARE, INTERMEDIATE CARE FACILITY (ICF), INTERMEDIATE CARE FACILITY FOR THE MENTALLY RETARDED (ICF/MR), SKILLED NURSING FACILITY (SNF), JUVENILE INSTITUTIONS, RESIDENTIAL CARE SERVICES, RESIDENTIAL CARE FACILITY (RCF), RESIDENTIAL CARE FACILITY FOR THE MENTALLY RETARDED (RCF/MR), RESIDENTIAL TREATMENT SERVICES, RUNAWAYS AND THE VETERANS HOME.

CHART 2, IN-HOME SERVICES (PAGE 20) COVERS THE REMAINDER OF PROGRAMS AND SERVICES THAT DO NOT REQUIRE 24-HOUR OUT-OF-HOME PLACEMENT. THESE PROGRAMS ARE: ADULT DAY CARE, AID TO DEPENDENT CHILDREN (ADC), ADC-RELATED, AID TO INDIANS, CHILD DAY CARE (REGULAR AND PROTECTIVE), CHILD PROTECTIVE, CLIENT ASSESSMENT/CASE MANAGEMENT, COURT-ORDERED CLIENT OVERSIGHT FOR CHILDREN, DEPENDENT ADULT ABUSE, DISPLACED HOMEMAKER, DOMESTIC ABUSE, EMPLOYMENT PROGRAMS, FAMILY PLANNING, HEALTH-RELATED, HOME-BASED TREATMENT, HOME MANAGEMENT, IN-HOME HEALTH, MENTAL HEALTH, REFUGEE PROGRAMS, SHELTERED WORK/WORK ACTIVITY, SUPPLEMENTAL SECURITY INCOME (SSI), SSI-RELATED, TITLE XIX/MEDICAID AND TRANSPORTATION.

THE FOOD PROGRAMS BASED ON INDIVIDUAL ELIGIBILITY ARE INCLUDED IN CHART 3 (PAGE 25). THEY ARE FOOD STAMPS, FEDERAL SURPLUS FOODS (TITLE II), THE ELDERLY FEEDING PILOT PROGRAM (EFPP) AND THE COMMODITY SUPPLEMENTAL FOOD PROGRAM (CSFP).

BASIC ELIGIBILITY CRITERIA (CONT'D)

CHART 4, GRANTS AND SPECIAL PROGRAMS (PAGE 30), INCLUDES THE GRANTS AND SPECIAL PROGRAMS THAT DO NOT FIT INTO THE OTHER CATEGORIES. IN MOST CASES THE "CLIENT" IS AN AGENCY, ORGANIZATION OR GOVERNING BODY, E.G., COUNTY. THE GRANTS AND SPECIAL PROGRAMS ARE: ADMINISTRATIVE SUPPORT FOR VOLUNTEERS, ASSISTANCE TO CHILD CARE CENTERS, CHARITABLE INSTITUTIONS, CHILD ABUSE PREVENTION, CHILD SUPPORT RECOVERY, COUNTY AND MULTI-COUNTY JUVENILE DETENTION SHELTER CARE REIMBURSEMENT, EMERGENCY FOOD DISTRIBUTION, HIRING FOR DAY CARE, JUVENILE COMMUNITY-BASED AND STATE CASES.

IN READING THE CHARTS, EACH ELIGIBILITY FACTOR, E.G., AGE CITIZENSHIP, RESIDENCE, ETC., IS LISTED IN THE LEFT-HAND COLUMN. THE ELIGIBILITY CRITERIA ARE CATEGORIZED SEPARATELY FOR CHILDREN AND ADULTS IN ALL CHARTS EXCEPT CHART 3 AS THE FOOD PROGRAMS DO NOT LEND TO THIS TYPE OF CATEGORIZATION. IN ALL CHARTS, PROGRAMS COVERED ARE LISTED AT THE TOP OF THE FIRST PAGE. THE ELIGIBILITY CRITERIA GIVEN IN EACH BLOCK LISTS THE GENERAL REQUIREMENT FOLLOWED BY EXCEPTIONS AND/OR SPECIAL REQUIREMENTS. IT SHOULD BE EMPHASIZED HERE THAT THE CHARTS COMPARE A LIMITED NUMBER OF BASIC ELIGIBILITY FACTORS AND ARE NOT INTENDED TO BE A COMPREHENSIVE LISTING OF PROGRAM ELIGIBILITY FACTORS. ADDITIONALLY, THEY ARE NOT MUTUALLY EXCLUSIVE: INDIVIDUALS AND FAMILIES MAY RECEIVE SERVICES LISTED ON MORE THAN ONE CHART. FOR MORE DETAILED INFORMATION, CONSULT THE CODE OF IOWA, THE ADMINISTRATIVE RULES AND EMPLOYEES' MANUAL, OR THE PROGRAM SUPERVISOR. AN ADDENDUM GIVING ELIGIBILITY FACTORS BY PROGRAM IS AVAILABLE UPON REQUEST FROM THE DIVISION OF ORGANIZATIONAL PLANNING.

CHART 1: OUT-OF-HOME PLACEMENT, January 1, 1984

	Children's Programs	Adult Programs
	Adoption Foster Care Juvenile Institutions (Eldora, Toledo) State Supplementary Assistance Program for Residential Care <ul style="list-style-type: none"> • Residential Care Facility (RCF) • Residential Care Facility for Mentally Retarded (RCF/MR) Runaways Subsidized Adoption Title XIX Medical Institutions: <ul style="list-style-type: none"> • Hospital • Intermediate Care Facility (ICF) • Intermediate Care Facility for Mentally Retarded (ICF/MR) • Skilled Nursing Facility (SNF) 	Family Life Home Residential Care Services Residential Treatment Services State Supplementary Assistance Program for Residential Care <ul style="list-style-type: none"> • Residential Care Facility (RCF) • Residential Care Facility for Mentally Retarded (RCF/MR) Title XIX Medical Institutions: <ul style="list-style-type: none"> • Hospital • Intermediate Care Facility (ICF) • Intermediate Care Facility for Mentally Retarded (ICF/MR) • Skilled Nursing Facility (SNF) Veterans Home
Eligibility Factors		
Age	Under 18. Exceptions: 1) For non-IV-E funded Foster Care and Subsidized Adoption can be 18-20 if working toward high school diploma or GED or in special education. 2) For IV-E funded Foster Care and Subsidized Adoption can be 18 if attending and expected to complete secondary school before age 19. 3) For foster care independent living must be 16½ and under 18. 4) Eldora, Toledo: 12-18.	Age 18. Exceptions for RCF, RCF/MR, ICF or ICF/MR: 65 and over or blind or disabled according to SSI standards. Veterans Home: Must be unable to earn a living because of age or chronic illness.
Citizenship	Must be U.S. citizen or permanently residing in U.S. under color of law, or arrived as a refugee unaccompanied by an adult. No citizenship requirements for Foster Care or Subsidized Adoption except for IV-E foster care funding.	Must be U.S. citizen or permanently residing in U.S. under color of law.
Residence	Iowa court has jurisdiction over the child, or the parent or child must be living in the state at the time of entry. Exceptions: For Shelter Care and Emergency Foster Care the only requirement is that the child be in Iowa at the time of entry.	Must be living in the state with intent to remain.

OUT-OF-HOME PLACEMENT

Eligibility Factors	Children's Programs	Adult Programs
Living Arrangements	Living in Foster Family Care, Foster Group Care, Shelter Care, Independent Living, Adoptive Placement, ICF, ICF/MR, RCF, RCF/MR, or the juvenile institutions.	Living in a Licensed Intermediate Care Facility, Residential Care Facility, ICF/MR, RCF/MR, certified Family Life Home, Skilled Nursing Facility, or the Veterans Home.
Social Security Account Number	Requested on application forms and required for IV-E Foster Care, Subsidized Adoption or when receiving SSI and for children in Foster Care requiring escrow accounts.	Requested on application form. Require Social Security claim number for Medicare buy-in.
Institution Medical	Foster Care: May be eligible to continue receiving payment while in a medical institution for two weeks or less for all Foster Care except Shelter Care and Subsidized Adoption through reserve bed days for the facility. Except for RCF, RCF/MR, ICF, ICF/MR, SNF: Would remain eligible.	Residential Care/Residential Treatment: may be eligible to continue receiving payment while in a medical institution for two weeks or less. Except for SNF, RCF, RCF/MR, ICF, ICF/MR, Family Life Home: Would remain eligible. Veterans Home: Eligible for care and treatment at a Veterans Administration Medical Center.
Institution Non-Medical	Ineligible if in a public institution, e.g., jail, detention center. Exceptions: 1) Foster Care: May be eligible to continue receiving payment while in a non-medical institution for two weeks or less for all except Shelter Care. 2) Juvenile Institutions: ADC-related at time of entry: Ineligible beginning the month after timely notice (10 days) for Title XIX is given. SSI-related at time of entry: Ineligible after notice of one full calendar month.	Ineligible if in a public institution (jail, penitentiary, Iowa Mental Health Institute, county care facility over 16 beds, etc.) Exception for Residential Treatment/Residential Care: May be eligible to continue receiving payment for two weeks or less.
Registration for Employment	Generally not required. Exception for IV-E Foster Care and Subsidized Adoption: Child over 16 must register for WIN if not in school.	Generally not required.
Support Payment Assignment	Generally not required. Exception: Foster Care.	Generally not required.
Resource Limitations	Foster Care; IV-E Foster Care and IV-E Subsidized Adoption: \$1,000. SSI-related: \$1,500. ICF, ICF/MR, RCF, RCF/MR and Juvenile Institutions, other Foster Care, Runaways and Subsidized Adoption: No resource limits.	RCF, RCF/MR, ICF, ICF/MR, SNF, Family Life Home: \$1,500. Veterans Home: No resource limits.

Eligibility
Factors

Children's Programs

Adult Programs

Resource
Exemptions

RCF, RCF/MR, ICF, ICF/MR, SNF: Irrevocable funeral contract, burial plots; life insurance with face value of \$1,500 or less; life estate if not salable; non-homestead real property necessary for self-support of blind or disabled.

IV-E Foster Care and Subsidized Adoption: Same as above except homestead and household goods -- no limit.

Juvenile Institutions: Not an eligibility factor.

RCF, RCF/MR, ICF, ICF/MR, SNF, Family Life Home: Homestead; household goods valued at \$2,000 or less; one automobile up to a current market value of \$4,500 (total market value if it is necessary for employment or medical treatment or modified for operation or transportation of a handicapped person); irrevocable funeral contract-burial plots; life insurance with face value of \$1,500 or less; life estate if not salable; non-homestead real property necessary for self-support of blind or disabled.

ADC, ADC-related, Aid to Indians: Same as SSI, except: no limit on household goods.

Veterans Home: Not an eligibility factor.

Income
Limitations

RCF, RCF/MR, and IV-E Foster Care: Countable income cannot exceed maintenance costs.
ICF, ICF/MR, SNF: \$942.00 per month or cost of care.

RCF, RCF/MR, ICF, ICF/MR, SNF: \$942.00 per month or cost of care.
Family Life Home: Cost of care or \$387.20.

Residential Treatment/Residential Care Services: Automatically eligible if recipient of income maintenance programs or if the monthly gross income according to family size is no more than the following amounts:

Family Size	Monthly Gross Income
1 member	\$ 422
2 members	552
3 members	682
4 members	811
5 members	941
6 members	1,071
7 members	1,095
8 members	1,119
9 members	1,144
10 members	1,168

When a family has more than 10 members, the monthly maximum income, rounded to the nearest whole dollar, is increased for each additional person by three percent of the income standard for a family of four.

Veterans Home: Unable to earn a livelihood because of age or chronic illness.

OUT-OF-HOME PLACEMENT

Eligibility Factors

Children's Programs

Adult Programs

Income Exemptions

Foster Care: Earnings of a child who is a full-time student and not in independent living are not counted.

RCF, RCF/MR, ICF, ICF/MR, SNF: Earned income -- first \$65 + one-half balance; tax refunds, general assistance based on need; grants/scholarships/fellowships used for paying tuition and fees/loans; Alaska Native Claims Settlement; judgment funds distributed to members of Indian tribes; infrequent or irregularly received income (income received less often than quarterly and no more than \$10 earned or \$20 unearned monthly); earned income under plan for achieving self-support.

RCF, RCF/MR, ICF, ICF/MR, SNF, Family Life Home: Earned income -- first \$65+ one-half balance; tax refunds; general assistance based on need; grants/scholarships/fellowships used for paying tuition and fees/loans; Alaska Native Claims Settlement; judgment funds distributed to members of Indian tribes; infrequent or irregularly received income (income received less often than quarterly and no more than \$10 earned or \$20 unearned monthly); earned income under plan for achieving self-support.

Residential Treatment/Residential Care Services: Judgment funds distributed to members of Indian tribes; Alaska Native Claims Settlement; money received from the sale of property, unless the person was engaged in the business of selling such property; withdrawals of bank deposits; money borrowed; tax refunds; gifts; lump sum inheritances or insurance payments or settlements, capital gains; the value of food stamp coupons, donated foods, and supplemental foods; earnings of a child 14 years of age or under; loans and grants which cannot be used for current living expenses; home produce utilized for household consumption; foster grandparent program stipends; the first \$65 + one-half balance of the income earned in a sheltered workshop or work activity setting.

Other

Foster Care, Subsidized Adoption, ICF, ICF/MR, RCF, RCF/MR, Foster Care, Shelter Care: Child must require level of care provided.

Recipients of all services above are eligible for Title XIX.

Subsidized Adoption: Must be under guardianship of the DHS Commissioner or private, licensed child-placing agency prior to adoption.

To receive Foster Care Service child must meet one Foster Care Legal Status:
 • DHS Commissioner's guardianship;
 • DHS custody;

ICF, RCF, ICF/MR, RCF/MR, SNF, Family Life Home, Residential Treatment/Residential Care Services: Must require level of care provided and is automatically eligible for Title XIX (Medicaid).

Additional eligibility requirements for admission to the Veterans Home.
 Veteran must be:
 • Honorably discharged from the U.S. armed forces; and
 • Eligible for care and treatment at a Veterans Administration Medical Center.

Eligibility
Factors

Children's Programs

Adult Programs

- Voluntary placement;
 - Commissioner's approval for 30-day emergency placement;
or
 - Post-adjudication transfer of custody to another prison
or agency.
- All out-of-state placements must meet the statutory requirements of the interstate compact on the placement of children.
- Eldora, Toledo: Must be court-ordered to juvenile institution.
- ICF is generally not considered an appropriate placement for children. A special waiver must be obtained from the Health Department to admit the child.

A spouse of a veteran is eligible to enter the Veterans Home with the veteran if the spouse has been married to the veteran at least one year prior to application.

A widowed spouse of a veteran may be eligible for admittance provided all the other veteran and spouse requirements are met and he or she is unable to earn a livelihood.

COMPARISON OF PROGRAM ELIGIBILITY FACTORS

CHART 2: IN-HOME SERVICES, January 1, 1984

	Children's Programs	Adult Programs
	Aid to Dependent Children (ADC) Aid to Indians Child Day Care Child Protective Client Assessment/Case Management Court-Ordered Client Oversight for Children Employment Programs Family Planning Home-Based Treatment Home Management Refugee Programs SSI-related, Blind Title XIX Transportation	Adult Day Care Aid to Dependent Children (ADC) Aid to Indians Client Assessment/Case Management Dependent Adult Abuse Displaced Homemaker Domestic Abuse Employment Programs Family Planning Health Related Home-Based Treatment Home Management In-Home Health Mental Health Refugee Programs Sheltered Work/Work Activity SSI-related, Dependent Person, Blind Title XIX Transportation
Eligibility Factors		
Age	Must be under age 18. Exceptions: 1) ADC, Aid to Indians and Refugee Programs: Child may be 18 and attending and expected to complete secondary school prior to reaching age 19. 2) Employment programs: Must be over 16 years of age.	Must be 18 years of age or older or attained majority through marriage. Exceptions: 1) Sheltered Work/Work Activity--21 or older unless approval is granted by case worker; 2) SSI-related -- 65 unless blind or disabled; 3) ADC -- no limitations when a parent or caretaker of an ADC eligible child; 4) there are no age limitations in the Aid to Indians and Refugee Programs.
Citizenship	Generally not required, except for ADC, Refugee, Employment, SSI-related, Title XIX, Aid to Indians: Must be U.S. citizen or admitted for permanent residence to U.S. or permanently residing in U.S. under color of law, or meets definition of refugee.	Generally not required, except for ADC, Refugee, Employment, SSI-related, Title XIX, Aid to Indians: Must be U.S. citizen or admitted for permanent residence to U.S. or permanently residing in U.S. under color of law, or meets definition of refugee.
Residence	Generally living in state voluntarily with intent to remain. Except for Child Protective, Client Assessment/Case Management: no restrictions. Child Day Care: Living in state at time of entry.	Living in state voluntarily with intent to remain or entered the state to seek employment or with a job commitment. Except for Domestic Abuse, Displaced Homemaker, Client Assessment/Case Management, Dependent Adult Abuse: No restrictions.

Eligibility Factors	Children's Programs	Adult Programs
Living Arrangements	<p>Generally may live alone or with others. Except for ADC and Refugee programs: Must reside with specified relative (relative responsible for care and control of child).</p> <p>Aid to Indians: Clients must reside at the Tama Indian Settlement.</p>	<p>Generally may live alone or with others. Exception for ADC and Home-Based Treatment: Must be a family, including a child.</p> <p>SSI-related: Dependent person must live with SSI-eligible individual.</p> <p>Aid to Indians: Client must reside at the Tama Indian Settlement.</p>
Institutional Status Medical	<p>Generally ineligible. Except for Home-Based Treatment, RCF, ADC, Refugee programs: Eligible when stay is anticipated to be less than one year.</p>	<p>Generally ineligible. Except for Home-Based Treatment, RCF, ADC, Aid to Indians, Refugee programs: Adults remain eligible when stay is anticipated to be less than one year.</p>
Institutional Status Non-Medical	<p>Ineligible if in a public institution (jail, penitentiary, Iowa Mental Health Institute, county care facility over 16 beds, etc.).</p> <p>Except for ADC, Aid to Indians and Refugee programs:</p> <p>1) Eligible if in educational or vocational institution in order to secure education or training, or when absence is expected to be less than three months, and</p> <p>2) Other institutions -- Ineligibility begins the month after timely notice (10 days) is given. SSI-related: Ineligibility begins after notice of one calendar month is given.</p>	<p>Ineligible if in a public institution (jail, penitentiary, Iowa Mental Health Institute, county care facility over 16 beds, etc.). Exceptions: 1) Persons over 65 or under 22 in an MHI may be eligible for Title XIX; 2) Aid to Indians, and Refugee programs current recipients ineligibility begins the month after timely notice (10 days) is given; 3) SSI-related current recipients: Ineligible after notice of one calendar month is given.</p>
Registration for Employment	<p>Generally not required. Except for ADC and Refugee programs: Children 16 or over and not in school full time must register and cooperate with WIN/CMS to become or remain eligible for ADC.</p>	<p>Generally not required. Exceptions:</p> <p>1) ADC parents must register for work through Job Service or the work programs (CMS, WIN, UP-CWEP) unless exempt.</p> <p>2) Non-exempt adult refugees must register with Job Service.</p>
Resources Limitations	<p>Generally no limits set. Except for ADC, ADC-Related Medical, Refugee programs, Aid to Indians: \$1,000 for family unit.</p> <p>SSI-related Medical: \$1,500.</p>	<p>Generally no limits set. Exceptions:</p> <p>1) ADC, ADC-related Medical, Refugee programs, Aid to Indians: \$1,000 for family unit.</p> <p>2) SSI-Related Programs: \$1,500 for individual, \$2,250 for couple. Dependent Person program only: add \$1,500 for dependent. (Include those resources transferred away in order to obtain eligibility.)</p>
Resource Exemptions	<p>ADC, Refugee programs, Aid to Indians: Homestead and household goods; one automobile up to an equity value of \$1,500; irrevocable funeral contract-burial plots; life insurance with no cash value and life estate.</p>	<p>Dependent Person allowance, Blind, and In-Home Health: Homestead; household goods valued at \$2,000 or less; one automobile up to a current market value</p>

IN-HOME SERVICES

Eligibility Factors

Children's Programs

Adult Programs

Resource Exemptions (Cont'd)

of \$4,500 (total market value if it is necessary for employment or medical treatment or modified for operation or transportation of a handicapped person); irrevocable funeral contract-burial plots; life insurance with face value of \$1,500 or less; life estate if not salable; and non-homestead real property necessary for self-support of blind or disabled.

ADC, ADC-related, Aid to Indians: Same as SSI, except for homestead; household goods -- no limits.

Income Limitations

ADC, ADC-related, Refugee programs and Aid to Indians: Based on number in the group as shown. Gross Income Limits:

- | | |
|-------------|----------------|
| 1) \$319.50 | 6) \$1,068.00 |
| 2) \$631.50 | 7) \$1,173.00 |
| 3) \$745.50 | 8) \$1,279.50 |
| 4) \$867.00 | 9) \$1,384.50 |
| 5) \$960.00 | 10) \$1,513.50 |

Add \$151.50 for each additional person.

Refugee Medical: May exceed ADC standards. Excess income must be applied prior to receiving payment for medical services.

Child Day Care: Income eligible status or if the monthly gross income according to family size is not more than the following amounts:

<u>Family Size</u>	<u>Monthly Gross Income</u>
1 member	\$ 500
2 members	651
3 members	804
4 members	957
5 members	1,110
6 members	1,264
7 members	1,293
8 members	1,322
9 members	1,350
10 members	1,378

When a family has more than 10 members, the monthly maximum income, rounded to the nearest whole dollar, is increased for each additional person by three percent of the income standard for a family of four.

SSI-related, Dependent Person, Blind, In-Home Health:

- Blind \$336.00
- In-Home Health - \$643.17 Individual, \$801.17 couple when one needs care, \$1,130.34 couple when both need care
- Dependent person \$471.00

ADC, ADC-related, and Aid to Indians: Same as children.

Refugee Medical: Same as children.

Adult Day Care, Sheltered Work/Work Activity, Transportation, Client Assessment/Case Management, Family Planning, Health Related: Automatically eligible if recipient of income maintenance programs or if the monthly gross income according to family size is no more than the following amounts:

<u>Family Size</u>	<u>Monthly Gross Income</u>
1 member	\$ 422
2 members	552
3 members	682
4 members	811
5 members	941
6 members	1,071
7 members	1,095
8 members	1,119
9 members	1,144
10 members	1,168

Eligibility
Factors

Children's Programs

Adult Programs

Income
Limitations
(Cont'd)

When a family has more than ten members, the monthly maximum income, increased for each additional person by three percent of the income standard for a family of four.

Income
Exemptions

ADC, Refugee programs, Aid to Indians: Rent supplements from any governmental agency; Indian tribal judgment funds; foster care payments; money received and spent on education; Vocational Rehabilitation training allowance; WIN and Individualized Education and Training Plan work and travel allowance; Work Incentive allowance; loans and grants which precludes use for current maintenance, except when determining initial eligibility; earnings of a child who attends school full time; monthly work expense of \$75 full time and \$74 part time; child care at a maximum per child of \$160/month full time and \$159/month part time; \$30 and 1/3 of net earnings for four consecutive months of currently eligible adult or child not in school.

Child Day Care, Home-Based Treatment: Same as Adult Day Care.

ADC, Refugee programs, Aid to Indians:
See Children's Programs.

Dependent Person, Blind allowance, In-Home Health: Earned income -- first \$65 and one-half balance; tax refunds; general assistance based on need; grants/scholarships/fellowships used for paying tuition and fees/loans; home produce for personal consumption; Domestic Voluntary Service ACT (VISTA) payments; housing assistance provided by HUD; relocation assistance; Emergency Energy Conservation Service; Alaska Native Claims Settlement; judgment funds distributed to members of Indian tribes; disaster assistance; earned income tax credits; infrequent or irregularly received income (income received less often than quarterly and no more than \$10 earned or \$20 unearned monthly); earned income under plan for achieving self-support.

Adult Day Care, Sheltered Work/Work Activity, Health Related, Transportation, Family Planning and State Cases: Judgment funds distributed to members of Indian tribes; Alaska Native Claims Settlement; money received from the sale of property, unless the person was engaged in the business of selling such property; withdrawals of bank deposits; money borrowed; tax refunds; gifts, lump sum inheritances, settlements or insurance payments, capital gains; the value of food stamp coupons, donated foods and supplemental foods; earnings of a child 14 years of age or under; loans and grants which cannot be used for current living expenses; home produce utilized for household consumption; foster grandparent program stipends; the first \$65 and one-half of the remainder of income earned in a sheltered workshop or work activity setting.

IN-HOME SERVICES

Eligibility
Factors

Children's Programs

Adult Programs

Other

ADC: Child must be deprived of care and support of at least one parent due to absence, incapacity or unemployment.

Child Protective: For investigative services there must be a reportable allegation of child abuse. For treatment services there must be a founded report of abuse. Prevention services are limited to six months.

Court-Ordered Client Oversight for Children: The department must provide services whenever the court directs or the law requires.

Refugee programs: For Refugee Cash Assistance must be between the ages 18-65 and not disabled or blind. Eligible for 18 months after entering the U.S. All other Refugee programs eligible for 36 months after entering the U.S.

Domestic Abuse: Dependent of a victim of abuse is eligible.

Title XIX: Eligible when receiving SSI, ADC, Aid to Indians, Refugee programs, or a child or a parent under age 21 meeting all ADC requirements except deprivation of care and support of at least one parent.

Employment programs: Must be eligible for ADC or Refugee programs.

Refugee programs: See Children's Programs.

Dependent Adult Abuse: For evaluation services there must be a reportable allegation of dependent adult abuse. For treatment services, there must be a founded report of abuse or expungement notice. Services are voluntary.

Domestic Abuse: Male or female victims of abuse and their dependents are eligible.

Displaced Homemaker: Persons who have provided homemaking service in the past and who no longer have that source of income available to them are eligible.

Title XIX: Eligible when receiving SSI, ADC, Aid To Indians and Refugee programs.

CHART 3: FOOD PROGRAMS, January 1, 1984

Food Programs

Commodity Supplemental Food Program (CSFP)
 Elderly Feeding Pilot Program (EFPP)
 Federal Surplus Foods (Title II)
 Food Stamps (FS)

Eligibility Factors

	CSFP	EFPP	Title II	FS
Age	Child up to age 6, pregnant woman or woman up to 12 months post-partum.	Must be 60 or over.	No maximum age. No minimum age, except under 18 must be free of parental control of another household member to be eligible and to be considered a single household.	No maximum age. No minimum age, except under 18 must be free of parental control of another household member to be eligible and to be considered a single household.
Citizenship	Not required.	Not required.	Not required.	Must be a U.S. citizen or lawfully admitted alien (admitted for permanent residence) falling within one of five categories.
Residence	Must be residing in the county where application was made. No durational requirement, but not here only for vacation.	Must reside in Polk County.	Must reside in the State of Iowa.	Must be residing in the county where application was made. No durational requirement, but not here only for vacation.
Living Arrangements	One or more adults/children related by blood or law and residing in the same household, where adults other than spouses reside together, each is considered a one-person family. Emancipated minors and children living under the care of individuals not legally responsible for that care are considered a one-person family.	Individuals may or may not be home bound.	All persons in a dwelling, excluding borders.	Household size is determined by the food unit. There are some individuals who must be considered one household even if they aren't in the same food unit. These are: spouses; children under the age of 16 who are under the parental control of a household member; parents and children unless one of the parents is 60 or older or disabled; and siblings unless one is 60 or older or disabled.

FOOD PROGRAMS

Eligibility Factors	CSFP	EFPP	Title II	FS
Institutional Status Medical	Is not a factor if stay is temporary.	Is not a factor if stay is temporary.	Is not a factor if stay is temporary.	Generally not eligible. Two exceptions: 1) residents of federally subsidized housing for the elderly; and 2) residents of drug or alcoholic treatment centers may be eligible.
Institutional Status Non-Medical	Not eligible.	Not eligible.	Not eligible.	Generally, not eligible, except for: 1) disabled or blind residents in group living arrangements (as defined) receiving Title II or Title XVI benefits under the Social Security Act; 2) women or women and their children temporarily residing in shelters for battered women and children; 3) residents of qualifying federally subsidized housing for the elderly; and 4) narcotic addicts or alcoholics participating in a drug or alcohol certified facility or treatment center.
Registration for Employment	Not required.	Not required.	Not required.	Required unless: younger than 18 or 60 years of age or over; disabled; already participating in WIN; parent or caretaker meeting certain requirements; already registered as a condition of receiving unemployment compensation; participating in a drug or alcoholic treatment program; or person is employed 30 hours per week or equivalent earnings. Students (as defined) meeting participation requirements.

FOOD PROGRAMS

Eligibility Factors	CSFP	EFPP	Title II	FS																								
Support Payment Assignment				Not required.																								
Resource Limitations	Categorically eligible or eligible for local benefits under existing federal, state or local food, health or welfare programs for low income persons, or if not participating in such a program, meet income requirements of 150% of Commodity Services Administration poverty income guidelines.	Same as CSFP except no allowances for 150% of the Commodity Services Administration poverty income guidelines.	None.	\$3,000 for household with two or more members when one is 60 or over. \$1,500 for all other households.																								
Resource Exemptions	Same as ADC if ADC-related (\$1,000 for family unit).	None.	None.	Home and surrounding property; household goods; pets; cash value of life insurance policies and pension funds; certain licensed vehicles; inaccessible resources; current month's income (except Keough plans and IRAs); certain disaster restoration monies; installment contract; certain trust funds; one burial plot per household member; money prorated as income; income-producing property; property essential to employment; Indian tribal land; and monies excluded by federal statute.																								
Income Limitations	<p>CSFP: Gross Income Limits:</p> <table border="1"> <thead> <tr> <th align="center">Household Size</th> <th align="center">Monthly Income</th> </tr> </thead> <tbody> <tr> <td align="center">1</td> <td align="right">\$ 539</td> </tr> <tr> <td align="center">2</td> <td align="right">711</td> </tr> <tr> <td align="center">3</td> <td align="right">884</td> </tr> <tr> <td align="center">4</td> <td align="right">1,056</td> </tr> <tr> <td align="center">5</td> <td align="right">1,229</td> </tr> <tr> <td align="center">6</td> <td align="right">1,401</td> </tr> </tbody> </table>	Household Size	Monthly Income	1	\$ 539	2	711	3	884	4	1,056	5	1,229	6	1,401	<p>Persons must be eligible for local benefits under existing federal, state or local food, health or welfare programs for low income individuals or have monthly income of less than \$620.</p> <p>Certification is done on an individual basis.</p>	<p>Income Guidelines: Countable income must be at or below the following amount:</p> <table border="1"> <thead> <tr> <th align="center">Household Size</th> <th align="center">Monthly Income</th> </tr> </thead> <tbody> <tr> <td align="center">1</td> <td align="right">\$ 722</td> </tr> <tr> <td align="center">2</td> <td align="right">959</td> </tr> <tr> <td align="center">3</td> <td align="right">1,197</td> </tr> <tr> <td align="center">4</td> <td align="right">1,434</td> </tr> </tbody> </table>	Household Size	Monthly Income	1	\$ 722	2	959	3	1,197	4	1,434	<p>If household is above the following guidelines, the household is not eligible. Gross Monthly Income - includes earned and unearned income of all household members (minus income exclusions).</p>
Household Size	Monthly Income																											
1	\$ 539																											
2	711																											
3	884																											
4	1,056																											
5	1,229																											
6	1,401																											
Household Size	Monthly Income																											
1	\$ 722																											
2	959																											
3	1,197																											
4	1,434																											

FOOD PROGRAMS

Eligibility Factors	CSFP	EFPP	Title II		FS								
Income Limitations (Cont'd)	<p>Each additional member, add \$172. When a family has more than 10 members, the monthly maximum income, rounded to the nearest whole number, is increased by 3% of the family income for a family of 4 for each additional person.</p> <p>One or two month supplies of prescribed foods are issued to eligible persons.</p>		Household Size	Monthly Income	Maximum Gross Monthly Income Chart								
			5 6 7 8	1,671 1,908 2,146 2,383	<table border="0"> <tr> <td>1) \$ 540</td> <td>5) \$1,294</td> </tr> <tr> <td>2) \$ 728</td> <td>6) \$1,482</td> </tr> <tr> <td>3) \$ 917</td> <td>7) \$1,671</td> </tr> <tr> <td>4) \$1,105</td> <td>8) \$1,859</td> </tr> </table>	1) \$ 540	5) \$1,294	2) \$ 728	6) \$1,482	3) \$ 917	7) \$1,671	4) \$1,105	8) \$1,859
1) \$ 540	5) \$1,294												
2) \$ 728	6) \$1,482												
3) \$ 917	7) \$1,671												
4) \$1,105	8) \$1,859												
			For each additional member add \$283.		Each additional person add \$182.								
					<p>Exception: The Gross Monthly Income limits do not apply to households where a member is 60 years of age or older or receives SSI due to age, disability or blindness.</p> <p>If the above household is above the following guidelines, the household is not eligible:</p>								
					Maximum Net Monthly Income Chart								
					<table border="0"> <tr> <td>1) \$415</td> <td>5) \$ 995</td> </tr> <tr> <td>3) \$560</td> <td>6) \$1,140</td> </tr> <tr> <td>3) \$705</td> <td>7) \$1,285</td> </tr> <tr> <td>4) \$850</td> <td>8) \$1,430</td> </tr> </table>	1) \$415	5) \$ 995	3) \$560	6) \$1,140	3) \$705	7) \$1,285	4) \$850	8) \$1,430
1) \$415	5) \$ 995												
3) \$560	6) \$1,140												
3) \$705	7) \$1,285												
4) \$850	8) \$1,430												
					Each additional person, add \$145.								
Income Exemptions	If ADC eligible, same as ADC. (See Chart 2)	Medicare \$12.50 per month.	Social Security; Railroad Retirement; Supplemental Security Income; state or federal assistance; veterans benefits; black lung benefits; and all disability pensions, or State Supplementary Assistance, unemployment compensation benefits, and income from minors under 16 years of age.		Recoupments; assigned child support; vendor payments; in-kind benefits; regular loans, portion of educational loans or grants used for tuition; representative payments received and used for a nonhousehold member; earnings of child; nonrecurring lump sum payments; cost of producing self-employment income; and income excluded by federal law.								

FOOD PROGRAMS

Eligibility Factors	CSFP	EFPP	Title II	FS
Income Exemptions (Cont'd)				Income deductions: 18% of gross monthly earned income, \$89 standard deduction and \$125 maximum for child care and excess shelter cost. (Excess shelter cost-- cost which exceeds 50% of household's gross income less deductions other than shelter.)

COMPARISON OF PROGRAM ELIGIBILITY FACTORS

CHART 4: GRANTS, SPECIAL PROGRAMS, January 1, 1984

	Children's Programs	Adult Programs
	Administrative Support for Volunteers Assistance to Child Care Centers Charitable Institutions Child Abuse Prevention Child Support Recovery County and Multi-County Juvenile Detention Shelter Care Reimbursement Emergency Food Distribution Hiring for Day Care Juvenile Community-Based	Administrative Support for Volunteers Charitable Institutions Child Support Recovery Emergency Food Distribution State Cases
Eligibility Factors		
Age Served	Assistance to Child Care Centers, Juvenile Community-Based Grants, County and Multi-County Juvenile Detention Shelter Care Reimbursement: Must serve children under age 18. Child Abuse Prevention: Serves families with children under age of 18.	Emergency Food Distribution (Cooperative Emergency Feeding Organizations), Charitable Institutions: No age restrictions.
Residence	Organization/institution must be located in and serve people in the State of Iowa.	Organization/institution must be located in and serve people in the State of Iowa.
Eligible Institutions	Charitable Institutions: 1) Private and non-profit tax-exempt; or 2) Tax-supported, e.g., county juvenile homes, halfway houses, etc. Emergency Food Distribution: Emergency feeding organization for needy persons. Assistance to Child Care Centers: Must be licensed, serving low-income families and prove need of funds. County and Multi-County Juvenile Detention Shelter Care Reimbursement: Must NOT receive foster care funds.	Charitable Institutions: 1) Private and non-profit tax-exempt; or 2) Tax-supported, e.g., county care facilities, halfway houses, etc.
Other	Assistance to Child Care Centers: County Boards of Social Welfare review application of all facilities. The facility must serve the child care needs of the community. Juvenile Community-Based: Grants are start-up funds or continuation funds for designated children's services. County and Multi-County Juvenile Detention Shelter Care Reimbursement: Counties and multi-counties are reimbursed for the costs of establishing, operating and maintaining juvenile institutions and shelter care homes. Administrative Support for Volunteers: District Offices enter into a contract between the agency or individual and the State Volunteer Program Director.	Emergency Food Distribution: Emergency feeding organization for needy persons. Emergency Food Distribution: Cooperative emergency feeding organizations enter into an agreement with the Department assuring only needy persons are served; and that: reasonable measures will be taken to assure against theft spoilage or other loss of emergency food; meals are provided to needy persons on a regular schedule at least once a week; free meals are available to needy persons; and that no payment is required from needy persons for meals served.

GRANTS, SPECIAL PROGRAMS

	Children's Programs	Adult Programs
Other (Cont'd)	<p>Child Support Recovery: Establishes and enforces the support obligation owed by absent parents to their children; locates absent parents, establishes paternity and obtains child support.</p> <p>Hiring for Day Care: Funds allocated to day care facilities that hire ADC recipients.</p> <p>Child Abuse Prevention: Funds are administered by a private organization through a contract with the Department. Community councils on child abuse and neglect may apply for and receive funds for prevention programs upon approval by the Advisory Council.</p>	<p>Charitable Institutions: DHS charges recipient institutions for administrative and storage costs.</p> <p>Administrative Support for Volunteers: District offices enter into a contract between the District Administrator, the agency or individual and the State Volunteer Program Director.</p> <p>Child Support Recovery: Establishes and enforces the support obligation owed by absent parents to their children; locates absent parents, establishes paternity and obtains child support and spousal support if included in one court order.</p> <p>State Cases: Adults who do not have legal settlement in Iowa and are not residing in a state-funded institution but who require SSBG services.</p>

FUNDING STREAMS AND CLIENT COUNTS

FOR THE

SOCIAL SERVICES AND COMMUNITY SERVICES DIVISIONS

FUNDING STREAMS, FISCAL YEAR 1983, SOCIAL SERVICES AND COMMUNITY SERVICES DIVISIONS (PAGE 33) LISTS THE PROGRAMS AND SERVICES ALPHABETICALLY IN THE LEFT-HAND COLUMN. ACROSS THE TOP OF THE PAGE THE FEDERAL, STATE, COUNTY AND TOTALS EXPENDED ARE DISPLAYED AS WELL AS AVERAGE MONTHLY CLIENTS SERVED TOTALS FOR FY 1983 WHERE AVAILABLE. THE EXPLANATION COLUMN, FAR RIGHT, GIVES ADDITIONAL, PERTINENT INFORMATION AS NECESSARY.

FOR PURPOSES OF THIS CHART:

- 1) THE DIVISION OF MANAGEMENT AND BUDGET PROVIDED INFORMATION REGARDING FUNDS EXPENDED AND CATEGORIES OF PROGRAMS AND SERVICES WHERE SHOWN, ACCORDING TO THEIR FISCAL TRACKING REPORTING SYSTEM. EXCEPTION: SOME FOOD PROGRAMS DATA WAS SUPPLIED BY THE BUREAU OF PROPERTY MANAGEMENT.
- 2) DIRECT ADMINISTRATIVE COST OF PROVIDING SERVICES TO CLIENTS GENERALLY WAS NOT INCLUDED, EXCEPT FOR THE JUVENILE INSTITUTIONS, THE VETERANS HOME AND THE COMMODITY SUPPLEMENTAL FOOD PROGRAM AND THE ELDERLY FEEDING PILOT PROGRAM. THEREFORE, NO DOLLAR FIGURES ARE SHOWN FOR DEPARTMENT SOCIAL WORKERS, INCOME MAINTENANCE WORKERS, VOLUNTEER COORDINATORS, ETC.
- 3) ABBREVIATIONS OF FUNDING SOURCES ARE GIVEN IN COMPLETE FORM IN THE LEGEND ON PAGE 39 OF THIS CHART.
- 4) FY 1983 THROUGHOUT REFERS TO STATE FISCAL YEAR BEGINNING JULY 1, 1982, AND ENDING JUNE 30, 1983.

FUNDING STREAMS AND CLIENT COUNTS FY 1983

DIVISIONS OF SOCIAL SERVICES AND COMMUNITY SERVICES

PROGRAM/SERVICE	FEDERAL	STATE	COUNTY	TOTAL EXPENDED	CLIENTS SERVED	EXPLANATION
ADC						
- CMS	IV-A \$ 14,939	ADC \$ 36,837	\$ ---	CMS \$ 51,776	CMS 89	
- IETP	IV-A 835,890	ADC 674,300	---	IETP 1,510,190	IETP 1,900	
- Regular	IV-A 70,229,318	ADC 56,682,197	---	Regular 129,006,060	Regular 90,003	
	Refugee 2,094,545	---	---	---	---	
- Unemployed Parent	IV-A 6,113,002	ADC 4,931,266	---	UP 11,091,399	UP 8,622	
	Refugee 47,131	---	---	---	---	
- UP-CWEP	IV-A 54,013	ADC 54,012	---	UP-CWEP 108,025	UP-CWEP 686	
Administrative Support for Volunteers	---	---	---	---	---	General Admin., Central Office Budget
Adoption	---	---	---	---	15	A direct service provided by DHS and funded through the Community Services appropriation.
Adult Day Care	SSBG 470,169	LP 18,272	162,814	651,255	190	
Aid to Indians	---	ATI 33,707	---	33,707	128	
Assistance to Child Care Centers	---	CBS 245,633	---	245,633	495 facilities served	
Charitable Institutions	USDA 2,056,126	---	---	2,056,126	28,287	USDA funds are distributed.

FUNDING STREAMS AND CLIENT COUNTS FY 1983

DIVISIONS OF SOCIAL SERVICES AND COMMUNITY SERVICES

PROGRAM/SERVICE	FEDERAL		STATE		COUNTY	TOTAL EXPENDED	CLIENTS SERVED	EXPLANATION	
Child Abuse Prevention	\$	---	CBS	\$ 107,730	\$	---	\$ 107,730	3,782	Clients served received direct service through Child Abuse Prevention Program.
Child Day Care									
- Family Day Care - Half and Full Day	SSBG	46,576	LP	54,390	3,741	104,786	1,106		
- In-Home Day Care - Half and Full Day	Refugee	79							
- Licensed Day Care - Half and Full Day	SSBG	6,006	LP	7,014	---	13,020			
	SSBG	609,903	LP	712,237	152,347	1,574,521			
	Refugee	100,034							
Child Protective		---		---		---	1,200 Investigations	A direct service provided by DHS through the Community Services Appropriation.	
Child Support Recovery		---		---		---	---	Child Support Recovery Unit Appropriation	
Client Assessment/Case Management		---		---		---	12,522	A direct service provided by DHS and funded through Community Services Appropriation.	
Commodity Supplemental Food Program (CSFP)	FA	110,560		---		---	472,827	2,465	USDA funds are value of products distributed.
	USDA	362,267							

DIVISIONS OF SOCIAL SERVICES AND COMMUNITY SERVICES

PROGRAM/SERVICE	FEDERAL	STATE	COUNTY	TOTAL EXPENDED	CLIENTS SERVED	EXPLANATION
County and Multi-County Juvenile Detention Shelter Care Reimbursement	\$ ---	CBS \$ 993	\$ ---	\$ 993	---	
Court-Ordered Client Oversight	---	---	---	---	2,250	A direct service provided by DHS and funded through the Community Services Appropriation.
Dependent Adult Abuse	---	---	---	---	648	A direct service provided by DHS and funded through the Community Services Appropriation.
Displaced Homemaker	---	CBS 91,615	---	91,615	115	
Domestic Abuse	---	CBS 91,390	---	91,390	200	
Elderly Feeding Pilot Program (EFPP)	FA 52,175 USDA 187,835	---	---	240,010	1,279	Value of products distributed
Emergency Food Distribution Program (Title I)	---	---	---	---	---	Program did not become operational until FY 84.
Emergency Food and Shelter (FEMA)	---	---	---	---	---	Although program was approved in April, 1983, no funds were spent until FY 84.

FUNDING STREAMS AND CLIENT COUNTS FY 1983

DIVISIONS OF SOCIAL SERVICES AND COMMUNITY SERVICES

PROGRAM/SERVICE	FEDERAL	STATE	COUNTY	TOTAL EXPENDED	CLIENTS SERVED	EXPLANATION
Family Life Home	\$ ---	\$ ---	\$ ---	\$ ---	90	A direct service provided by DHS and funded through the Community Services Appropriation.
Family Planning	SSBG \$ 142,100	HBS \$ 47,366	---	\$ 189,466	880	
Federal Surplus Food (Title II)	USDA 23,834,919	---	---	23,834,919	437,600	USDA funds are value of products distributed.
Food Stamps	USDA 100,267,533	---	---	100,267,533	202,679	Issuance only
Foster Care	IV-E 1,961,595 IV-E 940,038 SSBG 4,533,000 Refugee 1,468,542	FC 27,663,792	---	36,566,967	2,967	State funds include recoveries.
Health Related Services	SSBG 6,887	LP 8,043	4,977	19,907	2,100	
Hiring for Day Care	SSBG 880	---	---	880	---	
Home-Based Treatment	---	HBS 2,737,053	---	2,737,053	550	Clients are 550 families.
Home Management	---	---	---	---	2,500	A direct service provided by DHS and funded through the Community Services Appropriation.

DIVISIONS OF SOCIAL SERVICES AND COMMUNITY SERVICES

PROGRAM/SERVICE	FEDERAL	STATE	COUNTY	TOTAL EXPENDED	CLIENTS SERVED	EXPLANATION
Information and Referral	\$ ---	\$ ---	\$ ---	\$ ---	---	A direct service provided by DHS and funded through the Community Services Appropriation.
Juvenile Justice County-Based	---	CBS \$ 1,448,575	---	\$ 1,448,575	NA	
Juvenile Community Based Grants	---	CBS 373,739	---	373,739	NA	
Institutional Services	VA 2,101,573 TXIX 20,262 MED-B 180,728 TOL 40,000 ELD 130,000	VET APP 8,818,135 JI 2,388,712 JI 4,725,707	---	VET 16,286,008 TOL 2,428,712 ELD 4,855,707	VET 646 TOL-ADP 90 ELD-ADP 230	For juvenile institutions federal funds represent meals reimbursement. Total expended for VET includes \$5,165,310 paid by veteran residents.
Medical Assistance	TXIX	MA				
- Buy In	1,208,592	3,267,674	---	4,476,266	---	
- Family Planning	1,931,005	214,556	---	2,145,561	647	
- Gerontology Project	35,754	35,755	---	71,509	30	
- ICF	51,203,306	44,917,037	---	96,120,343	15,431	
- ICF-MR	30,534,183	26,785,478	---	57,319,661	1,602	
- Medical Transportation	345,207	345,208	---	690,415	---	
- SNF	1,257,516	1,103,130	---	2,360,646	85	
- Provider Balance	80,294,792	70,436,936	---	150,731,728	87,974	
Mental Health Services	165,999	LP 193,852	119,949	479,800	3,639	
Residential Care Services	379,265	LP 442,900	274,055	1,096,220	176	
Residential Treatment Services	1,252,886	LP 1,463,103	905,261	3,621,250	310	

FUNDING STREAMS AND CLIENT COUNTS FY 1983

DIVISIONS OF SOCIAL SERVICES AND COMMUNITY SERVICES

PROGRAM/SERVICE	FEDERAL	STATE	COUNTY	TOTAL EXPENDED	CLIENTS SERVED	EXPLANATION
Runaways	\$ ---	\$ ---	\$ ---	\$ ---	---	General Adminis- tration Appro- priation.
Sheltered Work	SSBG \$ 2,117,874	LP \$ 82,304	\$ 733,393	\$ 2,933,571	700	
State Cases	---	CBS 310,139	---	310,139	68	
State Supplemental Assistance		SSA				
- Mandatory, Blind, Dependent Person, Family Life Home	---	1,136,000	---	7,364,368	2,138	
- RCF	---	5,050,808	---		4,221	
- Family Life Home	---	10,300	---		148	
- Funerals	---	37,762	---		9	
- Blind Allowance	---	398	---		910	
- In-Home Health	---	1,129,100	---	529		
Subsidized Adoption	---	HBS 614,723	---	614,723	342	
Transportation	173,491	LP 202,600	125,364	501,455	572	
WIN	IV-C 143,221	15,913	---	159,134	393	
Work Activity	SSBG 5,131,619	199,424	1,852,321	7,183,364	1,694	
TOTALS	\$395,193,335	\$269,947,815	\$4,334,222	\$674,640,682	---	Total expended in- cludes \$5,165,310 paid by residents of the Veterans Home.

DIVISIONS OF SOCIAL SERVICES AND COMMUNITY SERVICES

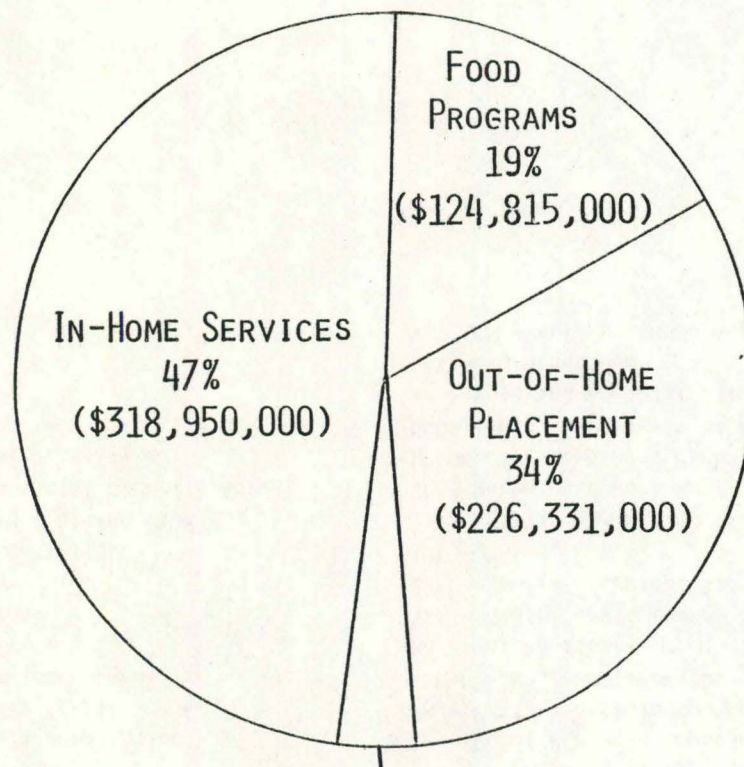
Legend:

ADC - Aid to Dependent Children Appropriation	IV-C - Title IV-C of the Social Security Act
ADP - Average Daily Population	IV-E - Title IV-E of the Social Security Act
ATI - Aid to Indians Appropriation	Jl - Juvenile Institution Appropriation
CBS - Community-Based Services Appropriation	LP - Local Purchase Appropriation
Clients Served - Average Monthly Totals	MA - Medical Assistance Appropriation
CMS - Coordinated Manpower Service Program	MED-B - Medicare, Part B
ELD - Eldora	NA - Not Applicable
FA - Federal Administrative Grant	SSA - State Supplementary Assistance Appropriation
FC - Foster Care Appropriation	SSBG - Social Services Block Grant
HBS - Home-Based Services Appropriation	TOL - Toledo
IETP - Individual Education and Training Plan	TXIX - Title XIX of the Social Security Act (Medicaid)
IV-A - Title IV-A (ADC) of the Social Security Act	UP - Unemployed Parent
IV-B - Title IV-B of the Social Security Act	UP-CWEP - Unemployed Parent Community Work Experience
	USDA - U.S. Department of Agriculture
	VA - Veterans Administration
	VET - Veterans Home
	VET APP - Veterans Home Appropriation

FUNDING FOR ELIGIBILITY CATEGORIES - FY '83 - SUMMARY

DIVISIONS OF SOCIAL SERVICES AND COMMUNITY SERVICES

USING THE FOUR ELIGIBILITY CATEGORIES, THE DEPARTMENT SPENT THE FOLLOWING AMOUNTS FOR SOCIAL SERVICES AND COMMUNITY SERVICES PROGRAMS FOR FISCAL YEAR 1983:



GRANTS AND SPECIAL PROGRAMS
.7%
(\$4,544,000)

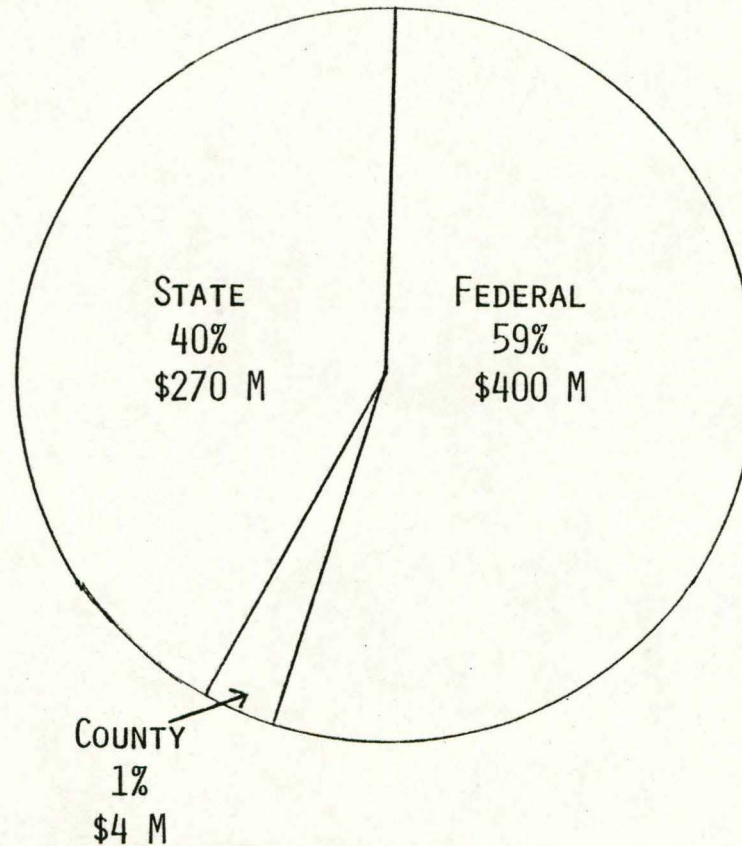
TOTAL: \$674,641,000

FUNDING SOURCE SUMMARY - FY '83,

FOR THE

DIVISIONS OF SOCIAL SERVICES AND COMMUNITY SERVICES

THE DIVISIONS OF SOCIAL SERVICES AND COMMUNITY SERVICES ARE FUNDED BY FEDERAL, STATE AND COUNTY SOURCES. OF THE TOTAL \$674 MILLION SPENT BY THE TWO DIVISIONS IN FISCAL YEAR 1983, THE FUNDING AMOUNTS AND PERCENTAGES ARE AS SHOWN.



SECTION II

DIVISION OF MENTAL HEALTH, MENTAL RETARDATION AND DEVELOPMENTAL DISABILITIES

DIVISIONAL RESPONSIBILITIES

THE DIVISION OF MENTAL HEALTH, MENTAL RETARDATION AND DEVELOPMENTAL DISABILITIES' CHARGE IS TO ASSURE THE CONTINUING DEVELOPMENT OF AN INTEGRATED SYSTEM OF COMPREHENSIVE MENTAL HEALTH, MENTAL RETARDATION AND DEVELOPMENTAL DISABILITIES SERVICES.

THE DIVISION IS ADMINISTERED BY A DIRECTOR WHO WORKS WITH THREE POLICY BODIES: THE 7-MEMBER COUNCIL ON HUMAN SERVICES, THE 15-MEMBER MENTAL HEALTH AND MENTAL RETARDATION COMMISSION AND THE 24-MEMBER DEVELOPMENTAL DISABILITIES COUNCIL. THERE ARE THREE BUREAUS IN THE DIVISION: THE BUREAU OF PROGRAM DEVELOPMENT, THE BUREAU OF COMMUNITY SUPPORT, AND THE BUREAU OF INSTITUTIONS, GRANTS AND STANDARDS.

THE MAJOR RESPONSIBILITIES OF THE DIVISION INCLUDE:

- STATEWIDE MENTAL HEALTH, MENTAL RETARDATION AND DEVELOPMENTAL DISABILITIES PLANNING.
- ADMINISTRATION OF THE STATE COMMUNITY MENTAL HEALTH AND MENTAL RETARDATION SERVICES FUND AND FEDERAL DEVELOPMENTAL DISABILITIES AND MENTAL HEALTH GRANTS.
- ESTABLISHMENT AND MONITORING OF STANDARDS FOR COMMUNITY MENTAL HEALTH CENTERS, AND OTHER AGENCIES NOT CURRENTLY LICENSED, WHICH SERVE THE MENTALLY ILL AND MENTALLY RETARDED.
- ADMINISTRATION OF THE FOUR MENTAL HEALTH INSTITUTES AND TWO STATE HOSPITAL-SCHOOLS.
- THE PROVISION OF EDUCATION AND TECHNICAL ASSISTANCE TO COUNTY SUPERVISORS, COUNTY MENTAL HEALTH AND MENTAL RETARDATION COORDINATING AND ADVISORY BOARDS AND COMMUNITY PROVIDERS.

DIVISIONAL RESPONSIBILITIES (CONT'D)

- PLANNING AND COORDINATING A COMPREHENSIVE ARRAY OF MH/MR/DD SERVICES INCLUDING: DIAGNOSIS AND EVALUATION, PREVENTION, COMMUNITY SUPPORT, TREATMENT IN BOTH INPATIENT AND OUTPATIENT SETTINGS, SPECIALIZED LIVING ARRANGEMENTS, EDUCATION, FUNCTIONAL ACADEMIC, VOCATIONAL, SOCIAL ADJUSTMENT AND DEVELOPMENT, INTERMEDIATE CARE/PARTIAL HOSPITALIZATION, EMERGENCY, RESIDENTIAL AND CONSULTATION SERVICES.

CRITERIA FOR FUNDING COMMUNITY-BASED SERVICES
FOR THE
DIVISION OF MENTAL HEALTH, MENTAL RETARDATION
AND DEVELOPMENTAL DISABILITIES

THE CRITERIA FOR FUNDING COMMUNITY-BASED SERVICES (PAGE 46) DISPLAYS THE SOURCE OF FUNDS, THE CRITERIA USED FOR ALLOCATION OF THE FUNDS TO FACILITIES, AND HOW THE FUNDS MAY BE USED FOR EACH OF THE FUNDING SOURCES CHANNLED THROUGH THE DIVISION OF MENTAL HEALTH, MENTAL RETARDATION AND DEVELOPMENTAL DISABILITIES.

**CRITERIA FOR FUNDING COMMUNITY-BASED SERVICES
DIVISION OF MH, MR AND DD**

	Alcohol, Drug Abuse and Mental Health	Community Support Programs	Developmental Disabilities	MH/MR General Allocation	MH/MR Special Allocation
Source of Funds	<ul style="list-style-type: none"> ● MH portion of federal ADAMH grant is awarded to Division of MH/MR/DD via the Iowa Dept. of Substance Abuse. 	<ul style="list-style-type: none"> ● National Institute of Mental Health grant to Division of MH/MR/DD. 	<ul style="list-style-type: none"> ● Federal Government to Governor's Office Administrative responsibility assigned to Division of MH/MR/DD. 	<ul style="list-style-type: none"> ● 80% of General Allocation is prorated by formula and goes directly to the counties. 	<ul style="list-style-type: none"> ● 20% of state appropriation to Division of MH/MR/DD.
Federal or State Criteria used for allocation to facilities	<ul style="list-style-type: none"> ● CMHC must provide: <ul style="list-style-type: none"> - outpatient services - 24-hour-a-day emergency care services - day treatment or other partial hospitalization services - screening for patients considered for admission to state MH facilities to determine appropriateness of such admission - consultation and education services 	<ul style="list-style-type: none"> ● Community Mental Health Centers or other facility providing Community Support Services. 	<ul style="list-style-type: none"> ● Activities must accomplish goals and objectives outlined in current DD Council Plan. (MH/MR/DD Plan) ● Must be approved by DD Council. 	<ul style="list-style-type: none"> ● Counties must: <ul style="list-style-type: none"> - raise by county levy and expend for MH/MR in preceding FY an amount equal to amount raised and expended in FY '81 - submit to the Division a plan for provision of MH/MR Services - affiliate with a CMHC or obtain a waiver. ● No more than 80% may be used for either MH or MR Services. 	<ul style="list-style-type: none"> ● Activities must accomplish goals and objectives outlined in current MH/MR/DD Plan. ● Must be approved by MH/MR Commission.

CRITERIA FOR FUNDING COMMUNITY-BASED SERVICES

	Alcohol, Drug and Mental Health	Community Support Programs	Developmental Disabilities	MH/MR General Allocation	MH/MR Special Allocation
How funds may be used	<ul style="list-style-type: none"> ● Planning, establishing, maintaining, coordinating and evaluating projects for developing more effective prevention, treatment and rehabilitation programs and activities to deal with alcohol and drug abuse. ● Grants to CMHS for: <ul style="list-style-type: none"> - Services to the chronically mentally ill (CMI) including assisting them in gaining access to essential services - Identification and assessment and treatment of severely mentally disturbed children and adolescents, and the mentally ill elderly 	<ul style="list-style-type: none"> ● Grants to CMHCs or other local facilities to provide community support service components to the chronically ill. ● Activities will assist the State of Iowa in completing its goals and objectives outlined in the current Mental Health, Mental Retardation and Developmental Disabilities State Plan. ● Details on specific activities are provided at the time funds are available for the activities. ● The ten recognized components of CSS are: <ul style="list-style-type: none"> - Outreach - Basic human needs - Outpatient MH care 	<ul style="list-style-type: none"> ● Grants to agencies for activities that assist the State of Iowa in completing its goals and objectives as outlined in the current Council Plan. ● Details on specific activities are provided at the time funds are available for the activities ● Example of activities that have been funded include: <ul style="list-style-type: none"> - Family subsidy - Independent living skills - Prevention - Service provider/staff training - Specialized living arrangements - Technical assistance 	<ul style="list-style-type: none"> ● Must be used for one or more of the comprehensive MH or MR services as defined in the Comprehensive State Plan. ● Services must be offered by licensed or accredited providers where such standards are applicable. ● Examples of Services that may be funded include these Mental Health Services: <ul style="list-style-type: none"> - Evaluation - Emergency - Intermediate Care/Partial Hospitalization - Community Support - Outpatient - Residential - Consultation - Education - Inpatient 	<ul style="list-style-type: none"> ● Grants to agencies may be for these Mental Health Services: <ul style="list-style-type: none"> - Evaluation - Emergency - Intermediate Care/Partial Hospitalization - Community Support - Outpatient - Residential - Consultation - Education - Inpatient and/or these Mental Retardation Services: <ul style="list-style-type: none"> - Diagnosis and Evaluation - Treatment - Social Adjustment and Development - Education/Functional Academics - Vocational - Specialized living - Community Support - Prevention

CRITERIA FOR FUNDING COMMUNITY-BASED SERVICES

	Alcohol, Drug and Mental Health	Community Support Programs	Developmental Disabilities	MH/MR General Allocation	MH/MR Special Allocation
How funds may be used (Cont'd)	<ul style="list-style-type: none"> - Services for identifiable underserved populations - Coordination of MH and health care services provided in health care centers including planning, administration and educational activities 	<ul style="list-style-type: none"> - Crisis Intervention - Psycho-social services - Housing and living arrangements - Support and assistance - Natural support systems - Grievance procedures - Case management 	<ul style="list-style-type: none"> - Vocational 	<p>and/or these Mental Retardation Services:</p> <ul style="list-style-type: none"> - Diagnosis and Evaluation - Treatment - Social Adjustment and Development - Education/Functional Academics - Vocational - Specialized living - Community Support - Prevention 	<ul style="list-style-type: none"> • Services other than comprehensive services will be considered if relevancy to the needs of the mentally ill and mentally retarded persons can be demonstrated.

FUNDING SOURCES, FY '1983

FOR THE

DIVISION OF MENTAL HEALTH, MENTAL RETARDATION AND DEVELOPMENTAL DISABILITIES

FY '83 FUNDING SOURCES, DIVISION OF MENTAL HEALTH, MENTAL RETARDATION AND DEVELOPMENTAL DISABILITIES (PAGE 50) LISTS THE SERVICES ALPHABETICALLY IN THE LEFT-HAND COLUMN. ACROSS THE TOP OF THE PAGE THE FEDERAL, STATE, COUNTY AND TOTALS EXPENDED ARE DISPLAYED AS WELL AS AN ESTIMATE OF THE NUMBER OF CLIENTS RECEIVING EACH SERVICE IN FY 1983. THE EXPLANATION COLUMN, FAR RIGHT, GIVES ADDITIONAL PERTINENT INFORMATION AS NECESSARY.

FOR THE PURPOSES OF THIS CHART:

- 1) THE DIVISION OF MENTAL HEALTH, MENTAL RETARDATION AND DEVELOPMENTAL DISABILITIES PROVIDED INFORMATION REGARDING FUNDS EXPENDED, ACCORDING TO THEIR FISCAL REPORTING SYSTEM. COUNTY EXPENDITURES ARE AGGREGATE TOTALS TAKEN FROM THE FY 1984 COUNTY APPLICATIONS FOR GENERAL ALLOCATION FUNDS.
- 2) FEDERAL GRANT MONIES ARE NOT EXPENDED DURING THE SAME FISCAL YEAR THE MONIES ARE AVAILABLE. THE DOLLAR AMOUNTS SHOWN ON THE CHART IN THE FEDERAL COLUMN WERE AVAILABLE IN FY '82 OR FY '83 FOR DISBURSEMENT IN FY 1983.
- 3) DOLLAR AMOUNTS SHOWN ON THE CHART IN STATE COLUMN WERE AVAILABLE JULY 1, 1982, FOR DISBURSEMENT DURING FY '83.
- 4) DIRECT ADMINISTRATIVE COST OF PROVIDING SERVICES TO CLIENTS GENERALLY WAS NOT INCLUDED, EXCEPT FOR CERTAIN FEDERAL GRANTS DESIGNED TO ALLOW ALLOCATIONS FOR ADMINISTRATIVE PURPOSES.
- 5) ABBREVIATIONS OF FUNDING SOURCES ARE GIVEN IN COMPLETE FORM IN THE LEGEND ON PAGE 52 OF THIS CHART.

F-003T21.1

FUNDING SOURCES, FY 1983
DIVISION OF MENTAL HEALTH, MENTAL RETARDATION AND DEVELOPMENTAL DISABILITIES

SERVICE	FEDERAL	STATE	COUNTY	TOTAL EXPENDED	CLIENTS SERVED*	EXPLANATION
Administration	ADAMH \$ 10,000	\$	\$	\$ 10,000		ADAMH: Implement the M.H. portion of a nonprofit MH/MR/DD Data System.
Consultation (MH)		GA -0-	785,956	785,956	8,528	
Community Support (MH)	ADAMH 11,830	GA 110,951	1,148,246		2,756	
(MR)	CSS 64,805	SA 67,590				
		GA 68,286	748,818	2,220,526	2,003	
Diagnosis & Evaluation (MR)		GA 7,623	227,346	234,969	574	
Education (MH)	ADAMH 8,852	GA 10,395	396,135	415,382	25,342	
Educational/Functional Academic (MR)		GA 36,578	681,686	718,264	439	
Emergency (MH)		GA 13,212	363,180	376,392	5,180	
Evaluation (MH)		GA 68,651	557,982		5,320	
		SA 40,000		666,633		
Family Subsidy	DD 90,000			90,000	100	DD: Assist disabled to remain in the home.
Inpatient (MH) Community-Based		GA 5,252	5,734,535	34,652,872	4,406	
Institution	TXVIII, TXIX 3,454,655	GA 8,799**	14,304,355***		3,185	
		GF 11,145,276				
Intermediate Care/Partial Hospitalization (MH)		GA 18,913	1,141,627	1,160,540	1,077	
Outpatient (MH)		GA 233,146	7,067,726		42,316	
		SA 16,191		7,317,063		

F-003W01

FUNDING SOURCES, FY 1983

SERVICE	FEDERAL	STATE	COUNTY	TOTAL EXPENDED	CLIENTS SERVED*	EXPLANATION
Prevention (MR) (DD)	\$ DD 25,000	GA \$ 3,500	\$ 253,575	\$ 282,075	3,369	DD: Identify and make available for distribution prevention material in the area of MR/DD.
Residential (MH)		GA 116,916 SA 18,700	15,982,912	16,118,528	3,009	
Service Provider/Staff Training	DD 55,000			55,000		DD: Assist in implementing provider staff training center around each community college continuing education/adult education.
Social Adjustment and Development (MR)		GA 40,555 SA 7,430	1,167,193	1,215,178	925	
Specialized Living Arrangements (MR) (DD)	DD 75,000	GA 183,868 SA 59,274	17,531,448	17,849,590	3,092	DD: Implementation of the issues identified in the State housing survey for DD.
Technical Assistance	DD 95,000 CSS 46,900			141,900		DD: Publish DD newsletter, operate state training clearinghouse, distribute DD Service Delivery, provide staff support to DD Council.

FUNDING SOURCES, FY 1983

SERVICE	FEDERAL	STATE	COUNTY	TOTAL EXPENDED	CLIENTS SERVED*	EXPLANATION
Technical Assistance (Cont'd)	\$	\$	\$	\$		CSS: Implement a statewide CSS network.
Treatment (MR) Community-Based		GA 6,462	4,900,702	52,185,714	673	
Institution	TXVIII, TXIX 20,309,021	GA 6,419** GF 9,601,273	17,361,837		1,644	
Vocational (MR) (DD)	DD 83,276	GA 198,248 SA 12,679	7,489,130	7,783,333	3,744 200	
Subtotals	ADAMH 30,682 CSS 111,705 DD 423,276 TXVIII, TXIX 23,763,676	GA 1,137,774 SA 221,864 GF 20,746,549	97,843,689			
TOTAL	\$ 24,329,339	\$ 22,106,187	\$97,844,389	\$144,279,915		

* Estimated client count (duplicated)

** General allocation funds counties have expended on Institutional Services

*** Includes commitment costs

Legend: ADAMH- Alcohol Drug Abuse and Mental Health
 CSS - Community Support Services
 DD - Developmental Disabilities
 GA - General Allocation

GF - General Fund
 SA - Special Allocation
 TXVIII- Medicare
 TXIX - Medicaid

FUNDING SOURCE SUMMARY, FY 1983

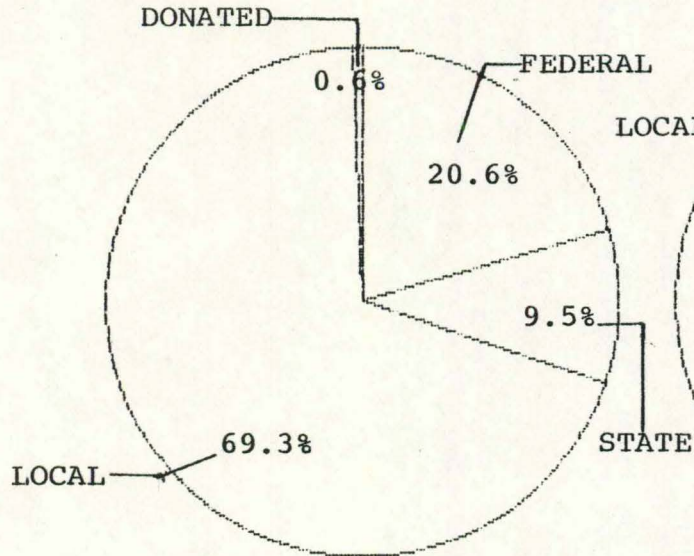
FOR THE

DIVISION OF MENTAL HEALTH, MENTAL RETARDATION AND DEVELOPMENTAL DISABILITIES

INSTITUTIONAL AND COMMUNITY BASED MENTAL HEALTH, MENTAL RETARDATION AND DEVELOPMENTAL DISABILITIES SERVICES ARE FUNDED BY FEDERAL, STATE AND COUNTY DOLLARS. THE DOLLAR AMOUNTS SHOWN INCLUDE SOCIAL SERVICES BLOCK GRANT AND TITLE XIX (MEDICAID) FUNDS EXPENDED FOR SERVICES DIRECTED TO INDIVIDUALS WITH MENTAL HEALTH PROBLEMS, MENTAL RETARDATION OR DEVELOPMENTAL DISABILITIES, AS WELL AS THE FUNDS SHOWN ON THE FY '83 FUNDING SOURCES CHART ON PAGES 50 - 52.

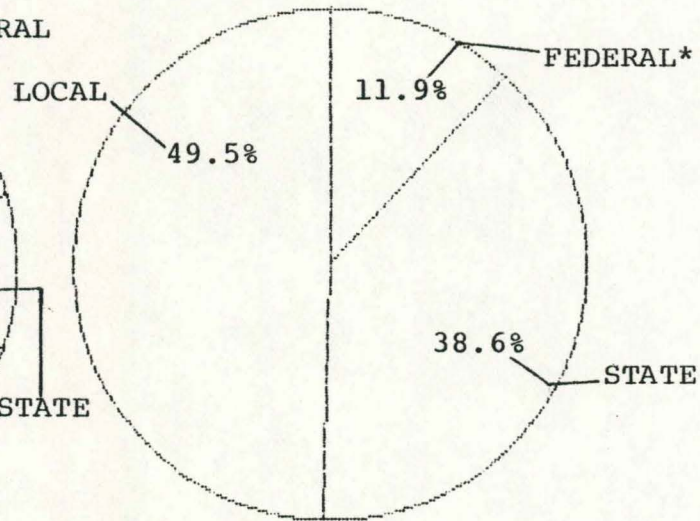
FUNDING SOURCES FOR MENTAL HEALTH SERVICES IN IOWA, FY 1983

COMMUNITY-BASED SERVICES



\$10,112,071	FEDERAL
4,667,733	STATE
33,968,271	LOCAL
300,524	DONATED
<u>\$49,048,599</u>	TOTAL

INSTITUTIONAL SERVICES



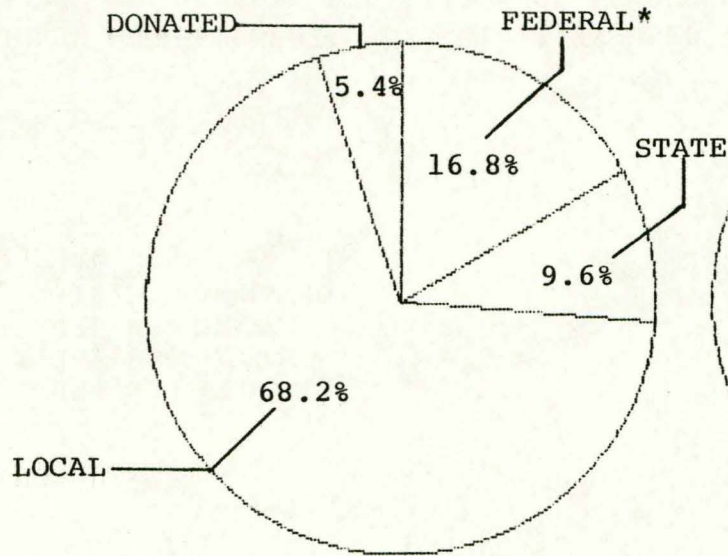
\$ 3,454,655	FEDERAL*
11,154,075	STATE
14,304,355	LOCAL
<u>\$28,913,085</u>	TOTAL

* MAY INCLUDE SUBSTANCE ABUSE SERVICES.

SOURCE: DEPARTMENT OF HUMAN SERVICES: MARS REPORT, FT06F001-6/05/84, COUNTY APPLICATIONS

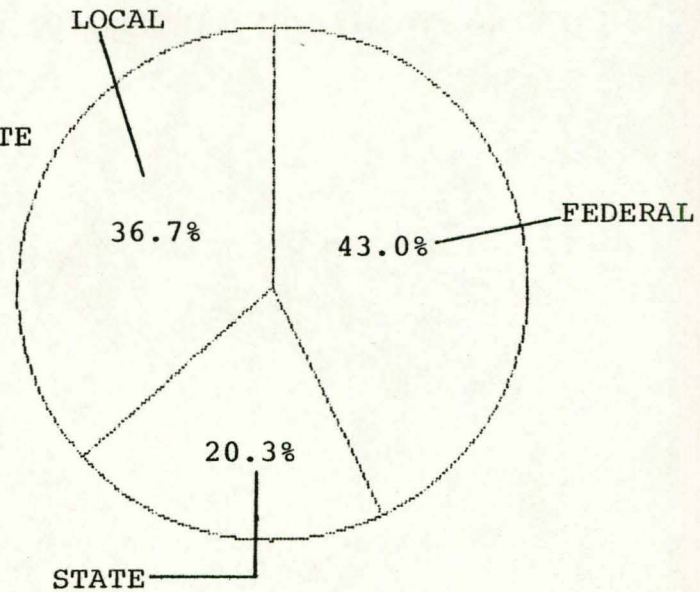
FUNDING SOURCES FOR MENTAL RETARDATION SERVICES IN IOWA, FY 1983

COMMUNITY-BASED SERVICES



\$10,222,764	FEDERAL*
5,830,543	STATE
41,428,449	LOCAL
3,255,527	DONATED
<u> </u>	
\$60,737,283	TOTAL

INSTITUTIONAL SERVICES



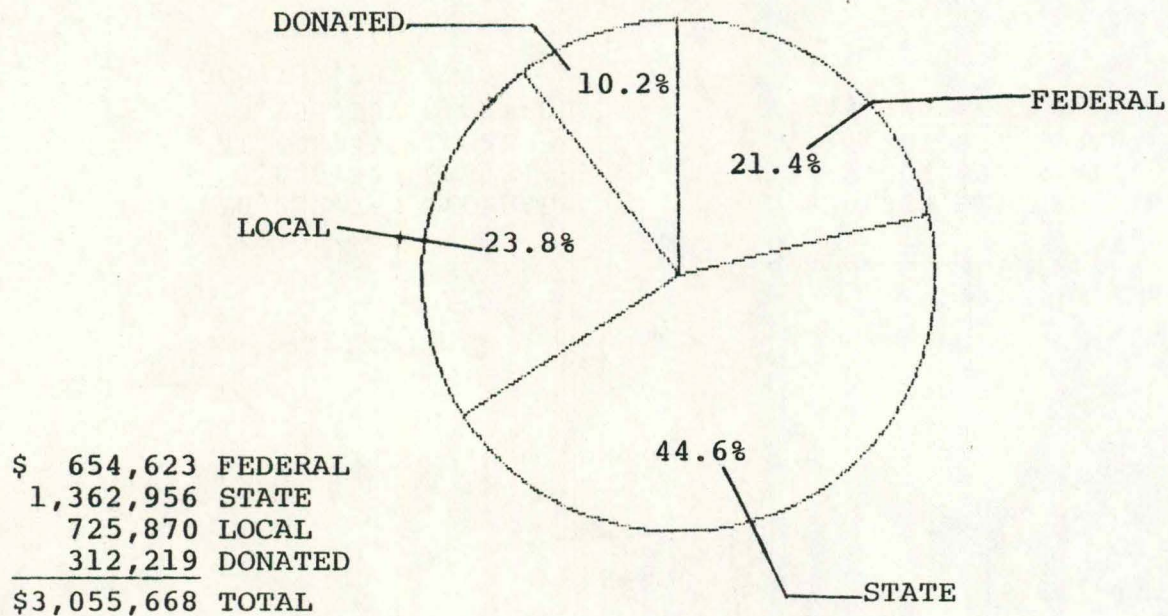
\$20,309,021	FEDERAL
9,607,692	STATE
17,361,837	LOCAL
<u> </u>	
\$47,278,550	TOTAL

* INCLUDES ONLY THOSE FEDERAL FUNDS WHICH CAN BE SPECIFICALLY IDENTIFIED AS BEING USED FOR MENTAL RETARDATION SERVICES.

SOURCE: DEPARTMENT OF HUMAN SERVICES: MARS REPORT, FT06F001-6/05/84, COUNTY APPLICATIONS

FUNDING SOURCES FOR DEVELOPMENTAL DISABILITY* SERVICES IN IOWA, FY 1983

COMMUNITY-BASED SERVICES

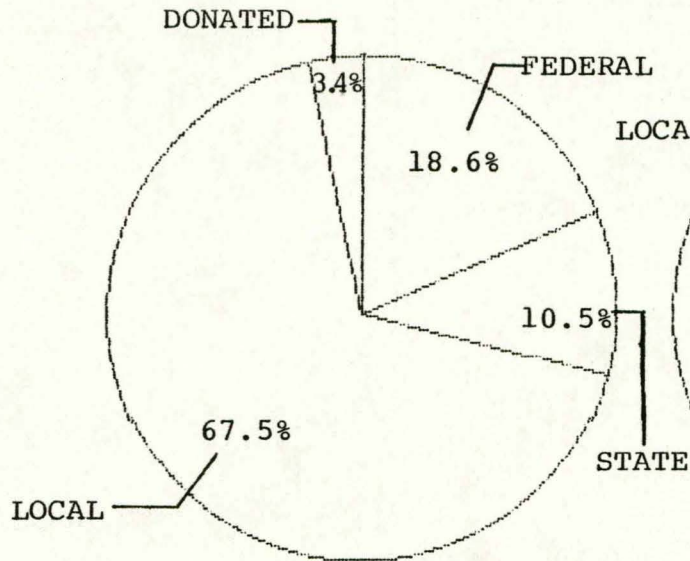


* THE DEFINITION OF DEVELOPMENTAL DISABILITIES USED TO IDENTIFY INDIVIDUALS RECEIVING SSBG SERVICES DOES NOT REFLECT THE FEDERAL DEFINITION OF DEVELOPMENTAL DISABILITIES.

SOURCE: DEPARTMENT OF HUMAN SERVICES: MARS REPORT, FT06F001-6/05/84, COUNTY APPLICATIONS

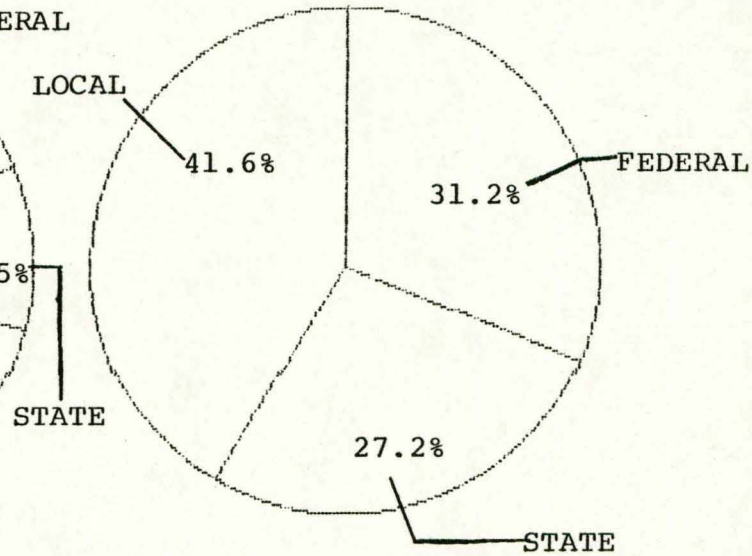
FUNDING SOURCES SUMMARY, FY 1983
 MENTAL HEALTH, MENTAL RETARDATION, DEVELOPMENTAL DISABILITIES

COMMUNITY-BASED SERVICES



\$ 20,989,458	FEDERAL
11,861,232	STATE
76,122,590	LOCAL
3,868,270	DONATED
<hr/>	
\$112,841,550	TOTAL

INSTITUTIONAL SERVICES



\$23,763,676	FEDERAL
20,761,767	STATE
31,666,192	LOCAL
<hr/>	
\$76,191,635	TOTAL

SOURCE: DEPARTMENT OF HUMAN SERVICES: MARS REPORT, FT06F001-6/05/84, COUNTY APPLICATIONS

APPENDIX

F-003T27

58

PROGRAM/SERVICE DEFINITIONS

• AID TO DEPENDENT CHILDREN (ADC)

This program encourages the care of dependent children in their own homes or in the homes of relatives by furnishing financial assistance and rehabilitation and other services to needy families with children who are deprived of parental care or support due to absence, death, incapacity or unemployment of one or both parents.

• ADMINISTRATIVE SUPPORT FOR VOLUNTEERS

Funds pay selected individuals and agencies to recruit volunteers, do screening, provide orientation and officially recognize those who assist DHS staff and work with DHS clients.

• ADOPTION

Service includes home studies, adoption and placement supervision and counseling, and reports to the court with recommendations regarding finalization of the adoption. Services are provided in connection with interstate and international adoptions.

• ADULT DAY CARE

This service provides personal and/or developmental care for a portion of a day in a protective setting to promote the individual's social, health and emotional well-being. Day care is also provided, where prescribed, for eligible adults who are aged, blind, disabled or mentally retarded to enable them to remain in their own homes or communities.

• AID TO INDIANS

This is a general relief program for needy Indians living on the Indian settlement in Tama County.

- ASSISTANCE TO CHILD CARE CENTERS

County boards of social welfare review applications of child care facilities for funding assistance.

- CHARITABLE INSTITUTIONS

Food is provided by the USDA to eligible institutions (private and nonprofit, tax exempt or tax supported). DHS charges recipient institutions for administrative and storage costs.

- CHILD ABUSE PREVENTION

Funds are administered by a private organization through a contract with the Department. Community councils on child abuse and neglect may apply for and receive funds for prevention programs upon approval by an advisory council.

- CHILD DAY CARE

This service provides supervision of children in the absence of parents for a portion of the day in a registered family or group day care home, licensed day care center, or infrequently in the child's own home. Supervision includes care, protection and experiences for each child's social, emotional, intellectual and physical development.

- CHILD PROTECTIVE SERVICES

Services include receiving reports of suspected abuse; investigation and submitting the reports to the juvenile court, the county and the Child Abuse Registry; initiating appropriate court actions; providing for services to the abused child and family; and administering the Child Abuse Registry which maintains a listing of substantiated child abusers, collects information and disseminates information according to the law.

- CHILD SUPPORT RECOVERY

This program establishes and enforces the support obligation owed by absent parents to their children, locates absent parents, establishes paternity and obtains child support, spousal support in conjunction with child support order, and foster care support. Assistance in collection of court-ordered support payments is available to those who reside in Iowa who are ADC recipients or to non-ADC recipients upon application.

- CLIENT ASSESSMENT/CASE MANAGEMENT

These services determine a person's need for a service, locate the service and arrange for the service to be provided, reassess service needs and end services when appropriate.

- COMMODITY SUPPLEMENTAL FOOD PROGRAM

Commodities are provided to needy infants and children under age 6, to pregnant women and to women up to 12 months postpartum.

- COORDINATED MANPOWER SERVICE PROGRAM (CMS)

This program provides work experience and on-the-job training opportunities to qualified ADC recipients.

- COUNTY AND MULTI-COUNTY JUVENILE DETENTION SHELTER CARE REIMBURSEMENT

Counties are reimbursed for the costs of establishing, operating and maintaining juvenile institutions and shelter care homes.

- COURT-ORDERED CLIENT OVERSIGHT

Services provide assistance to individuals or family units whose impaired functioning has come to the attention of the court system. The services provided are defined by law or legally ordered by a court. Included are: guardianship, custody and court-ordered supervision.

- DEPENDENT ADULT ABUSE

This service provides protection for adults who are abused, exploited, or denied basic needs by their own actions or the actions of others.

- DISPLACED HOMEMAKER

This grant program provides start-up funds for state revenues for multi-purpose service centers for displaced homemakers. Such centers provide or coordinate the following services for displaced homemakers: Outreach and information services; personal counseling; referral services; vocational testing, counseling and training; assistance with job search and placement; and other services.

- DOMESTIC ABUSE

This grant program provides start-up monies to agencies providing services to victims of domestic abuse. Each program includes the provision of emergency shelter, crisis intervention, and assistance with obtaining long-term solutions to the client's problems.

- ELDERLY FEEDING PROJECT

Program provides high protein foods to supplement the diets of low income elderly (over 60) who may or may not be homebound. Home delivery is available to all who need the service. Program is available only in Polk County.

- EMERGENCY FOOD DISTRIBUTION PROGRAM (Title I)

Program provides for the distribution of USDA donated commodities to agencies with emergency programs for food needy persons.

- FAMILY LIFE HOME

A Family Life Home is a private household offering a protective social living arrangement for one or two adult clients who are not able or willing to adequately maintain themselves in an independent living arrangement, but who are essentially capable of physical self-care.

- FAMILY PLANNING

This program assists persons of childbearing age by paying for educational, social, or medical services that help them to voluntarily limit or space children.

- FEDERAL SURPLUS FOOD

This program provides needy Iowans with surplus commodities donated by the USDA. The program serves needy households, emergency feeding organizations and charitable institutions.

- FOOD STAMPS

This program promotes the general welfare by raising the levels of nutrition among low-income households.

- FOSTER CARE

Children's foster care is a temporary living arrangement that provides substitute care on a 24-hour basis to children whose natural family environment is inadequate to meet their needs. Foster care includes food, lodging, training, supervision, treatment and health care of the child.

Types of foster care placements are foster family care, foster group care, shelter care and independent living. All services involving group living arrangements are purchased from public or private agencies, as is supervision for some foster family and independent living placements.

IV-E Foster Care: This program provides financial assistance for foster care maintenance to certain ADC-related children who have been removed from their homes through judicial determination or voluntary agreement.

- HEALTH RELATED SERVICES

These services assist persons to obtain a full range of emergency or ongoing medical services to prevent disease, alleviate existing problems, and maintain the health level of the client.

Services also include the assessment and referral of individuals of any age to obtain acute or long-term care in a health care or residential facility. These services do not include costs for any medical treatment.

- HIRING FOR DAY CARE

Funds are allocated to day care facilities that hire recipients of Aid to Dependent Children (ADC).

- HOME-BASED TREATMENT

These services are designed to keep family units intact by providing intensive guidance and counseling, intervention in family crisis and conflict, and support to families facing voluntary or involuntary removal of children from the home.

- HOME MANAGEMENT

This service provides one-to-one advice and training in household budgeting, housework, meal planning, cooking, shopping, child rearing, developing good health habits, and improving socialization skills.

- INDIVIDUAL EDUCATION AND TRAINING PLAN (IETP)

This program provides vocational counseling and financial assistance to qualified ADC recipients to attend vocational classroom training programs.

- INFORMATION AND REFERRAL

This service informs people about services that may help with a problem and directs them to a service provider. There are no eligibility requirements for this service.

- IN-HOME HEALTH RELATED CARE

This program provides nursing care in an individual's own home because the client's physical or mental health prevents self-care. Services are ordered by a physician, supervised by a nurse, and provided by individual providers to eligible persons.

- INTERMEDIATE CARE FACILITY (ICF)

An ICF is a facility that provides 24-hour accommodations, board and nursing services, the need for which is certified by a physician, to three or more persons not related to the administrator or owner, who by reason of illness, disease, or physical or mental infirmity require nursing services that can be provided only under the direction of a registered nurse or licensed practical nurse.

- INTERMEDIATE CARE FACILITY FOR THE MENTALLY RETARDED (ICF-MR)

An ICF-MR is an intermediate care facility that provides care to a population that is mentally retarded or otherwise developmentally disabled and can benefit from an active treatment program involving services and therapies provided by professional staff.

- INTERSTATE COMPACT ON JUVENILES

See RUNAWAYS.

- JUVENILE COMMUNITY-BASED GRANT

These grants are start-up funds or continuation funds for designated children's services.

- JUVENILE INSTITUTIONS

Eldora is a structured facility serving delinquent males with a full range of programs including educational, vocational, medical and treatment in the most secure setting for juveniles in the state. Toledo is a structured coed facility serving two populations: 1) children adjudicated to be children in need of assistance (CINA); and 2) female children adjudicated to have committed delinquent acts.

- MEDICAL ASSISTANCE (Title XIX)

Title XIX of the Social Security Act provides federal funds to the states for Medical Assistance to eligible individuals. The purpose of the Medical Assistance program is to provide medical and health care of high quality for recipients with low income.

- MENTAL HEALTH SERVICES

These services help a person to improve or maintain emotional stability and acceptable social skills by intensive guidance and counseling.

- REFUGEE PROGRAMS

The Iowa Refugee Service Center contracts with the Department for the administration of refugee cash assistance, medical assistance, foster care maintenance and services.

- RESIDENTIAL CARE FACILITY (RCF)

An RCF provides accommodations, personal assistance, and other essential daily living activities on a 24-hour-a-day basis for three or more individuals (not related to the administrator or owner), who by reason of illness, disease, or physical or mental handicap are unable to properly care for themselves, but who do not require nursing services except on an emergency basis.

- RESIDENTIAL CARE FACILITY FOR THE MENTALLY RETARDED (RCF-MR)

An RCF which provides care to a population primarily diagnosed as mentally retarded (i.e., 50 percent or more of the total facility population). Such a facility must develop an individual program plan for each resident.

- RESIDENTIAL CARE SERVICES

These services provide specialized social and support services and training in self-help and independent living skills for moderately dysfunctional adults who live in a licensed residential care facility.

- RESIDENTIAL TREATMENT SERVICES

These services provide habilitation and rehabilitation services to severely dysfunctional adults who live in a licensed facility. The services include: 1) social, 2) psychological, 3) educational, 4) health screening, 5) recreational, 6) pre-vocational and vocational training, and 7) special therapies.

- RUNAWAYS

The Interstate Compact on Juveniles provides procedures for return by states of runaways, escapees from juvenile institutions, and juvenile absconders from parole or probation. The Interstate Unit assumes responsibility for the return after the mandated legal procedures are followed or gives technical assistance to the person or agency legally responsible for the runaway. The Interstate Unit also gives technical assistance to other states in returning their runaways who are found in Iowa.

- SHELTERED WORK

These services provide an opportunity for a disabled person to participate in a recognized program of rehabilitation, habilitation, or education leading to gainful employment or providing long-term employment at the facility.

- SKILLED NURSING FACILITY (SNF)

A facility providing services of less intensity than provided in an acute care hospital but more intense than intermediate care. These services must be under the 24-hour supervision of a registered nurse and will generally involve the intervention of other specialized health care professionals including therapists.

- STATE CASES

"State Case" is the term used to identify the funding mechanism by which the Department pays for block grant services for an Iowa resident who is 18 years of age or older and who has not acquired legal settlement in any county.

- STATE SUPPLEMENTARY ASSISTANCE

The State Supplementary Assistance program provides benefits to the aged, blind, or disabled individuals who meet requirements of the Supplemental Security Income program (SSI) or who would be eligible for SSI benefits except that their income exceeds SSI limitations.

The State Supplementary Assistance programs are: Special Blind Allowance, Residential Care, Family Life Home, Dependent Person, In-Home Health Related Care, Burial Benefit, and Mandatory State Supplementary Assistance.

- SUBSIDIZED ADOPTION

This program serves children who would not otherwise be adopted because of age, race, physical, mental, or emotional handicaps by providing maintenance payments to income eligible families. These families meet all the qualifications for adopting parents except they do not have adequate income to meet an additional child's needs.

- TRANSPORTATION

This program provides assistance to clients for travel necessary to obtain social services, medical services, or employment.

- UNEMPLOYED PARENT COMMUNITY WORK EXPERIENCE PROGRAM (UP-CWEP)

This program provides work experience and on-the-job training opportunities to qualified ADC recipients.

- WORK INCENTIVE, COORDINATED MANPOWER SERVICE PROGRAMS (WIN,CMS)

These programs provide vocational counseling and financial assistance to qualified ADC recipients to attend classroom training programs and on-the-job training.

- WORK ACTIVITY

These therapeutic activities are provided for handicapped workers with severe impairments that limit their ability to earn a living.

- VETERANS HOME

The Iowa Veterans Home is a state-operated veterans facility that provides long-term health care services to Iowa's aged, chronically ill, handicapped veterans and dependent/surviving spouses. Three levels of care are provided: infirmary-type, nursing and domiciliary.

COMMUNITY-BASED SERVICE DEFINITIONS

• ADMINISTRATION

Implement the mental health portion of a non-profit MH/MR/DD Data System.

• CONSULTATION

MH: Services which provide professional assistance and information about mental health or mental illness to individuals, groups and/or organizations to increase the recipient's effectiveness in carrying out their service responsibilities.

• COMMUNITY SUPPORT

MH: Activities necessary to facilitate the assessment, development and delivery of a system of services to meet the needs of chronically mentally disabled persons. Such activities include, but are not limited to, case management and interagency program planning and coordination.

MR: Activities necessary to facilitate the assessing and delivery of other services to include, but are not limited to, information and referral, case management, advocacy, transportation, and legal and protective services to meet the needs of mentally retarded persons.

• DIAGNOSTIC AND EVALUATION

MR: Include but are not limited to, the psychological, social, physical, educational and vocational assessments necessary to identify the cause and effect of mental retardation and to provide information necessary for the preparation of an individual program of required services and objectives leading toward increasing independent functioning.

- EDUCATION

MH: Services which provide information and training concerning mental health, mental illness, the availability of services, the promotion of mental health and the prevention of mental illness to community leaders and organizations and the general public.

- EDUCATIONAL/FUNCTIONAL ACADEMIC

MR: This service component consists of activities designed to enable mentally retarded individuals to acquire basic knowledge and skills within a framework of well-defined curricula and goals practical to the individual's person, social and vocational development.

- EMERGENCY

MH: Evaluation and treatment activities available on a 24-hour-a-day, seven day-a-week basis to persons with mental health problems and mental disorders requiring immediate attention.

- EVALUATION

MH: Evaluation activities made available to courts, schools, other agencies, and to individuals upon request, which assess, plan for, and link individuals with appropriate services. Included are preliminary diagnostic evaluations for those seeking voluntary admission to the state mental health institutes.

- FAMILY SUBSIDY

Assist disabled to remain in the home.

- INPATIENT

MH: Evaluation, treatment, psycho-social support and rehabilitation activities provided in a hospital or other 24-hour treatment setting for persons with mental health problems and mental disorders requiring such treatment.

- INTERMEDIATE CARE/PARTIAL HOSPITALIZATION

MH: Evaluation, treatment, psycho-social support and rehabilitation activities provided within a structured group setting for people with mental health problems and mental disorders requiring more than outpatient services but less than 24-hour care.

- OUTPATIENT

MH: Evaluation and treatment activities provided on an ambulatory basis for persons with mental health problems and mental disorders.

- PREVENTION

MH: Activities provided to prevent or avert the occurrence of a disability and/or activities to identify early and treat disabilities so as to lessen its severity or its consequences. Includes activities such as, but not limited to, public education and information, nutrition, prenatal and delivery care, genetic counseling, family planning, research, early intervention and disability screening.

DD: Identify and make available for distribution prevention material in the area of MR/DD.

- RESIDENTIAL*

MH: Psycho-social support and rehabilitation activities provided for persons with mental health problems and mental disorders who require a specialized living arrangement in a variety of settings ranging from minimal supervision to 24-hour care.

*Room and board is one component of this service.

• SERVICE PROVIDER/STAFF TRAINING

Assist in implementing provider staff training center around each community college continuing education/adult education program.

• SOCIAL ADJUSTMENT AND DEVELOPMENT

MR: Provision of activities that focus on meeting needs relating to family unity and personal development and adjustment e.g., personal, family and community life. Includes in-home activities (homemaker/health aide, respite care, purchase or rental of specialized equipment and others); out-of-home activities (activities providing personal care and other services to the mentally retarded of all ages outside the home during the day); leisure activities, legal service activities and income service activities.

• SPECIALIZED LIVING ARRANGEMENT*

MR: Services provided to assist the mentally retarded individual in maintaining suitable residential arrangement in the community. These include, but are not limited to, in-home activities (such as personal aides, attendants, and other domestic assistance and supportive services), family support services, foster care services, group living services, respite care and staff training, placement and maintenance services. These activities may be provided in a variety of settings ranging from minimum supervision to 24-hour care.

*Room and board is one component of this service.

DD: Implementation of the issues identified in the State housing survey for DD.

- TECHNICAL ASSISTANCE

Publish and distribute a developmental disabilities newsletter, operate a statewide training clearinghouse, distribute DD service directory and provide staff support to DD Council.

- TREATMENT COMMUNITY-BASED INSTITUTION

MR: Intervention activities to halt or control conditions which cause, aggravate or complicate mental retardation. These activities include, but are not limited to, surgical procedures, dietary controls, chemotherapy, occupational therapy, behavior management, dental procedures, medical procedures and counseling.

- VOCATIONAL

MR: The provision of activities that relate to the preservation, restoration and development of skills for remuneration through such activities as work and vocational evaluation, skill training/development, vocational guidance, job placement in settings such as sheltered workshops, work activity centers and work stations in industry.

