

HT  
393  
.18  
E49  
1934



# IOWA STATE PLANNING BOARD

## A PRELIMINARY OUTLINE

By

P. H. Elwood, Director and Consultant  
(Revised April 28, 1934)

### A Complex Master Plan

One of the first duties of the State Planning Board will be to discover and to assemble all existing information and data, determine additions needed, then to record and arrange this data logically for ready reference and study. With this basic information a series of maps, plans, reports, graphs, and charts should be prepared as the basis of a comprehensive master plan for the state.

### Inclusive Committee Personnel

Even before this is done, a thorough canvas should be made to find every available person or organization in the state able to contribute information, ideas, or help of any kind in furtherance of this complex planning program. Important committee members, who are to take a leading part in this program are being so requested by the Governor of the State. Governor Herring has taken a leading part in the planning program and is doing everything possible to further the work.

### Make Iowa Planning-Conscious

This Board has a splendid opportunity to sell state and local planning to the people of Iowa by proper public relations and a long-time educational policy and setup. An immense amount of planning work already has been accomplished in Iowa giving the State Planning Board a broad foundation to build upon. The most important published contributions are:

1. The Book of Iowa
2. The Iowa Conservation Plan
3. Report by the Brookings Institute on "A Survey of Administration in Iowa"

Many other bulletins, reports and maps have been published in the state on a wide variety of subjects dealing directly with basic planning facts.

### Surveys and Research Needed

Besides these publications, much survey and research work has been done and is now being carried on particularly on township record maps and rural housing, stream flow, and forest surveys. The Planning Board should do all it can to push to completion all unfinished surveys or planning projects. Much of this can be accomplished by the proposed coordination and cooperation with the Federal Emergency Relief Administration, details of which will be worked out and submitted later.



## Major Projects

The work of the State Planning Board for the first six months' period can be divided into the following major projects, definite reports on the first three are requested by the National Planning Board at the end of the period. However, preliminary monthly reports on all projects should be made and submitted to the Director and the entire Board for discussion.

- |             |   |   |
|-------------|---|---|
| Project No. | 1 | - Land Utilization                        |
| "           | " | 2 - Public Works                          |
| "           | " | 3 - Transportation and Communication      |
| "           | " | 4 - Housing and Health                    |
| "           | " | 5 - Industry and Business                 |
| "           | " | 6 - Zoning and City and Regional Planning |
| "           | " | 7 - Education                             |
| "           | " | 8 - Water Flow Supply                     |
| "           | " | 9 - Historic and Scenic Features          |
| "           | " | 10 - Population and Social Trends         |
| "           | " | 11 - Public Relations                     |
| "           | " | 12 - Surveys, Maps, and Plans             |

Each of the above will be subdivided and resubdivided. To avoid confusion at this time, a detailed analysis is omitted. Furthermore, it is hoped that each Planning Board committee chairman will at once make a proposed breakdown of his subject into various definite objectives and processes and present these to the Executive Committee before its next meeting. The Executive Committee will then issue instructions and advice for immediate action in carrying out the proposed program of each committee.

The Chairman, Director, and Consultants will meet with each committee for the purpose of arranging a definite operations setup to meet the requirement of each committee. One or two additional correlating and planning committees may be added when the final budget and working personnel is on duty.

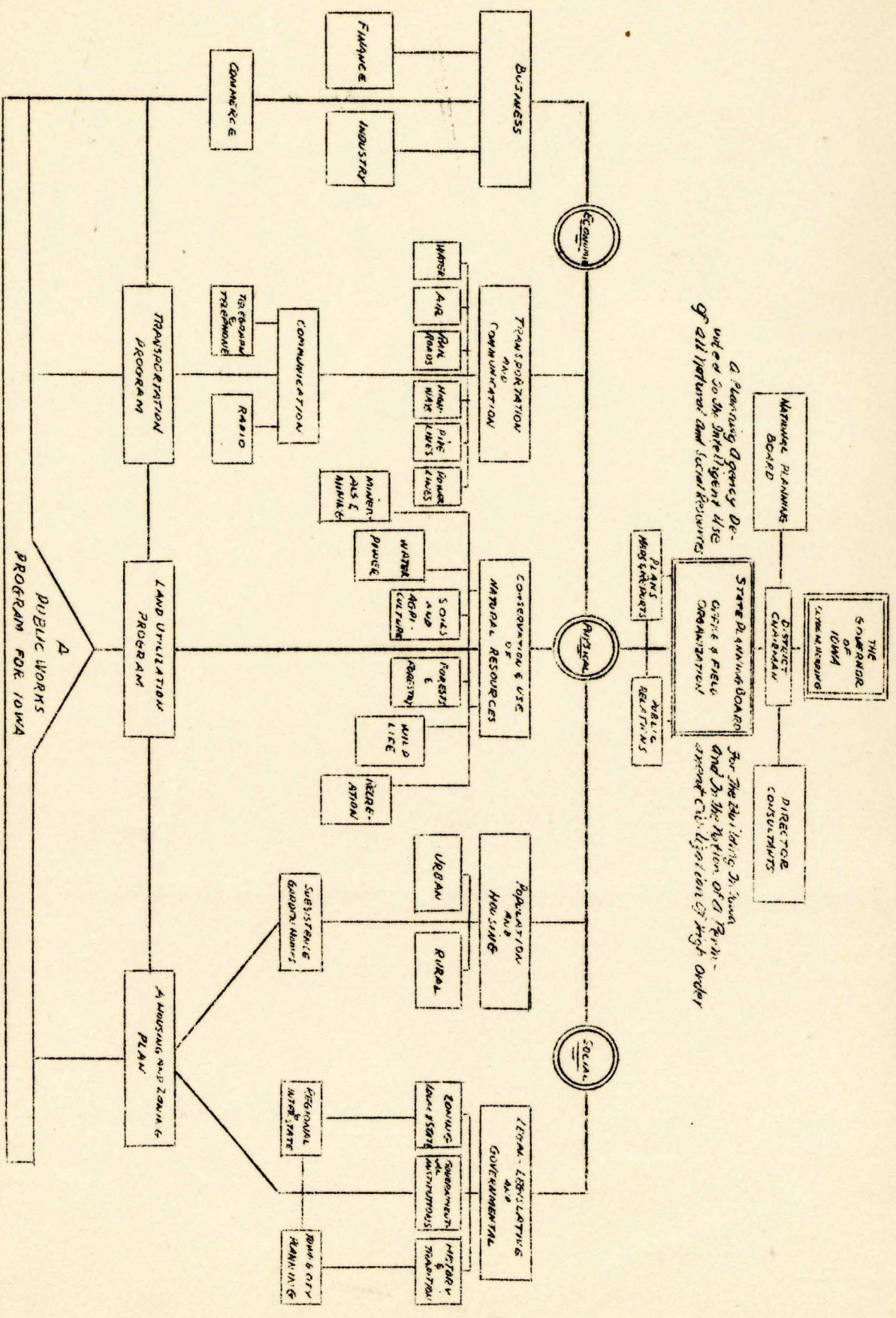
## Cooperation and Confidence

As we launch out into the maze and complications of our many-sided planning and while each of us may be more interested in some special phase of the general program, we all should, however, make a conscious effort to see the picture as a whole and try to fit our work and contribution into the mosaic. Let us all guard against pettiness and jealousy and put our shoulders to the wheel of progress.

Never has there been presented a better test of our civilization and our ability to plan and control in a measure our environment and our destiny and that of posterity. The future of Iowa and its people lies in our hands. May we measure up to this great task before us!



# IOWA STATE PLANNING BOARD



Each Major Division Has in Charge of a Board Committee Aided by State Wide Representatives Selected by Them and Appointed by the Governor



STATE LIBRARY OF IOWA



3 1723 02118 2282