



THOMAS J. VILSACK, GOVERNOR  
SALLY J. PEDERSON, LT. GOVERNOR

STATE OF IOWA

DEPARTMENT OF EDUCATION  
JUDY A. JEFFREY, DIRECTOR

**DATE:** January 7, 2006

**TO:** Parent Center Chief GED Examiners, Alternate Examiners,  
ABE Coordinators, Other Interested Parties

**FROM:** Division of Community Colleges and Workforce Preparation

**SUBJECT:** Iowa GED Statistical Report for Calendar Year 2005  
(January 1, 2005 - December 31, 2005)

**INTRODUCTION:** The following information summarizes the major statistical trends relative to Iowa's GED testing program for Calendar Year 2005.

**STATISTICAL TRENDS:** The following data summarizes some of the significant trends based on total testing volume (N=6,109).

- 98.3 percent passed by Iowa state standards.
- The average highest grade completed for Iowa's GED candidates is 11.0 compared to a national average of 10.0.
- The average age of Iowa's GED candidates is 24.2 compared to the national average of 24.7.
- 55.0 percent were male and 45.0 percent were female.
- 78 percent were majority and 21 percent were minority. The 21 percent minority figure compares to an overall 6 percent minority population figure for Iowa's adult population according to 2000 census figures.
- The number of Iowa High School Equivalency Diplomas issued during Calendar Year 2005 was 3,784.
- The three (3) major reasons for testing were: 1) Higher Education/Training (28.4 percent), 2) Employment Related (23.5 percent) and 3) Personal Satisfaction (22.1 percent).
- 80.5 percent of the candidates tested were between the ages of 16-29 (33.0 percent were between the ages of 16-19 and 47.5 percent were between the ages of 20-29).

**SUMMARY:** The GED testing program in Iowa has traditionally sustained a 93-98 percent GED candidates' pass rate. Iowa has always ranked in the top five states for GED candidates' pass rate. This high pass rate is an excellent testimony to the effectiveness of Iowa's ABE/GED instructional and GED testing delivery system. Iowa's high pass rate is due, to a large extent, to the fact that 96 percent of Iowa's GED candidates are direct referrals from the ABE/GED instructional component. Iowa has successfully met the state benchmark pass range (94-96 percent) for calendar years 1998-2005.

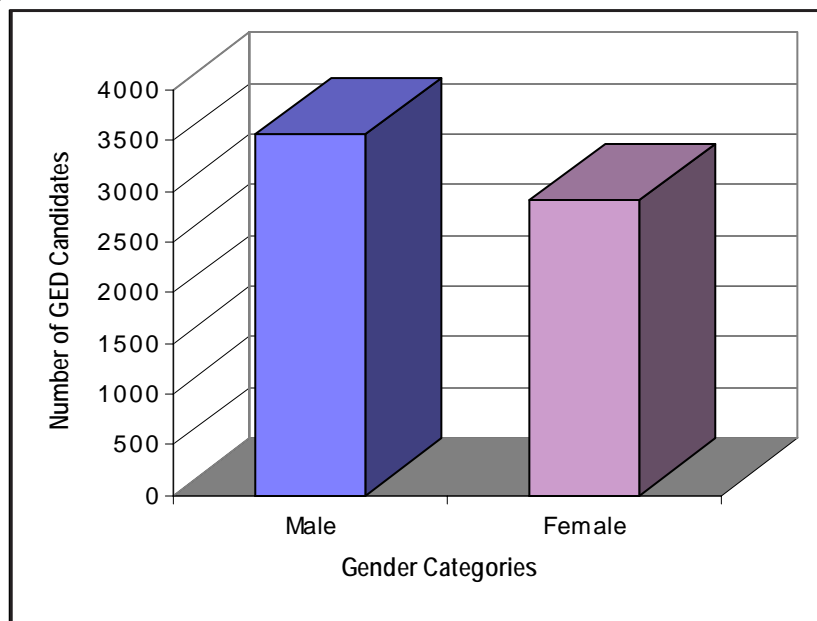
If you have any questions or comments, please contact me.

Sincerely,

John Hartwig  
Iowa State GED Administrator  
Division of Community Colleges & Workforce Preparation

GRAPH 1

## Number of Iowa GED Candidates by Gender Category for Calendar Year 2005

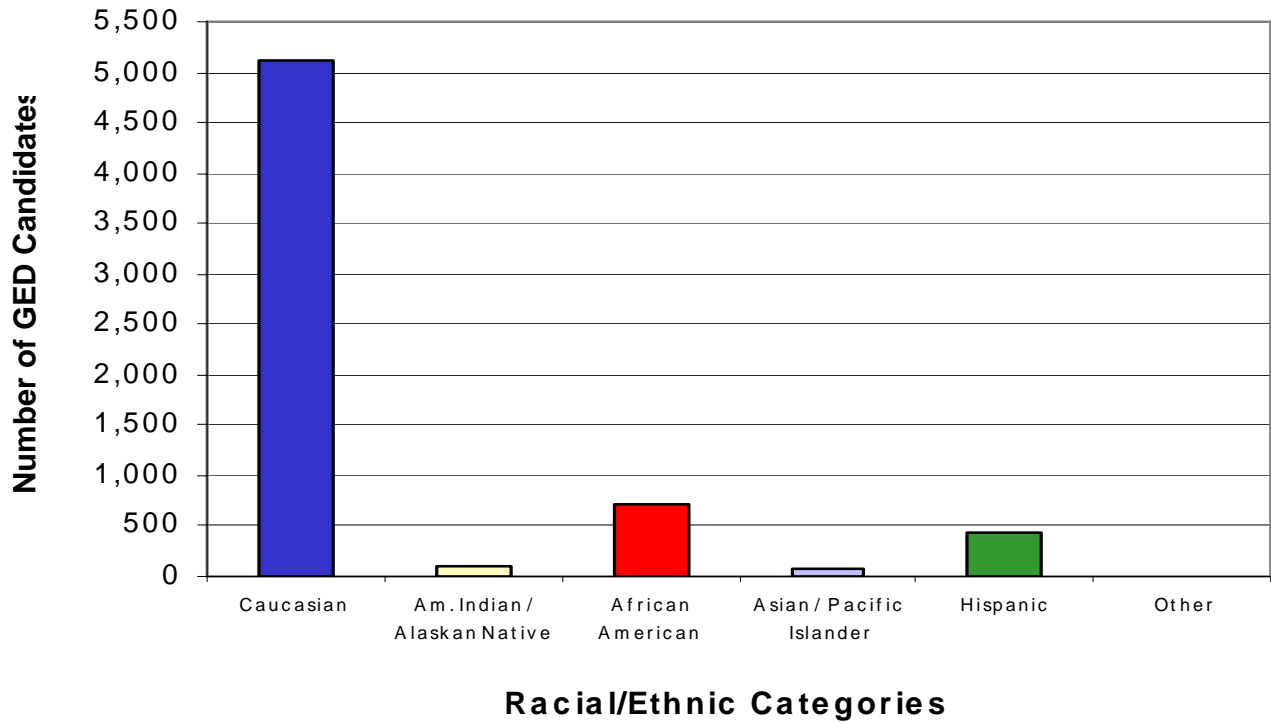


Gender Category	N	Percent
Male	3,284	53.8
Female	2,825	46.2
	<u>6,109</u>	<u>100.0</u>

**Source:** 2005 GED Annual Statistical Report, Iowa Department of Education.  
2003 GEDTS Annual Statistical Report, American Council of Education.

GRAPH 2

Number of Iowa GED Candidates  
by Racial/Ethnic Category  
for Calendar Year 2005



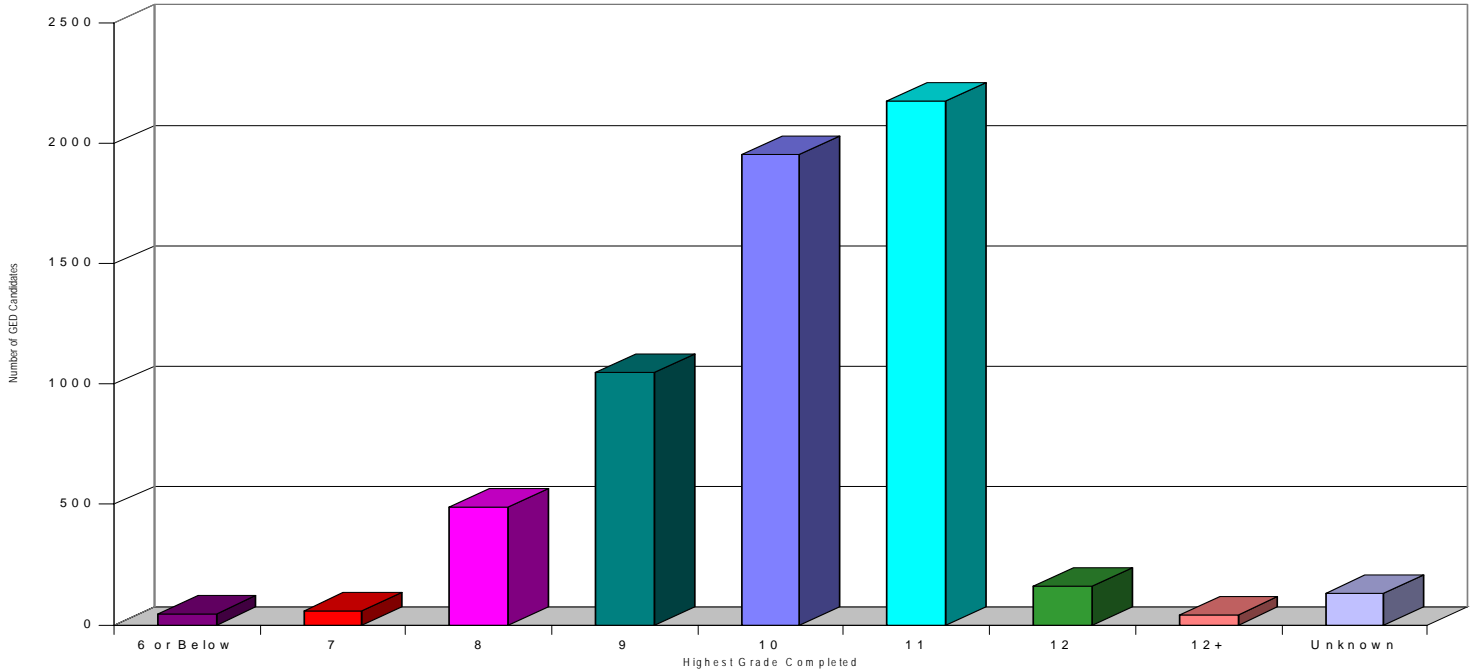
Racial Ethnic Category	N	Percent
Caucasian	4,778	78.2
American Indian/Alaskan Native	101	1.7
African American	735	12.0
Asian/Pacific Islander	75	1.2
Hispanic	414	6.8
Other	6	0.1
	<u>6,109</u>	<u>100.0</u>

78 percent were majority and 22 percent were minority. The 22 percent minority figure for GED candidates compares to an overall 6 percent minority population figure for Iowa's adult population according to 2000 census figures.

Source: 2005 GED Annual Statistical Report, Iowa Department of Education.

GRAPH 3

## Number of Iowa GED Candidates by Highest Grade Completed for Calendar Year 2005



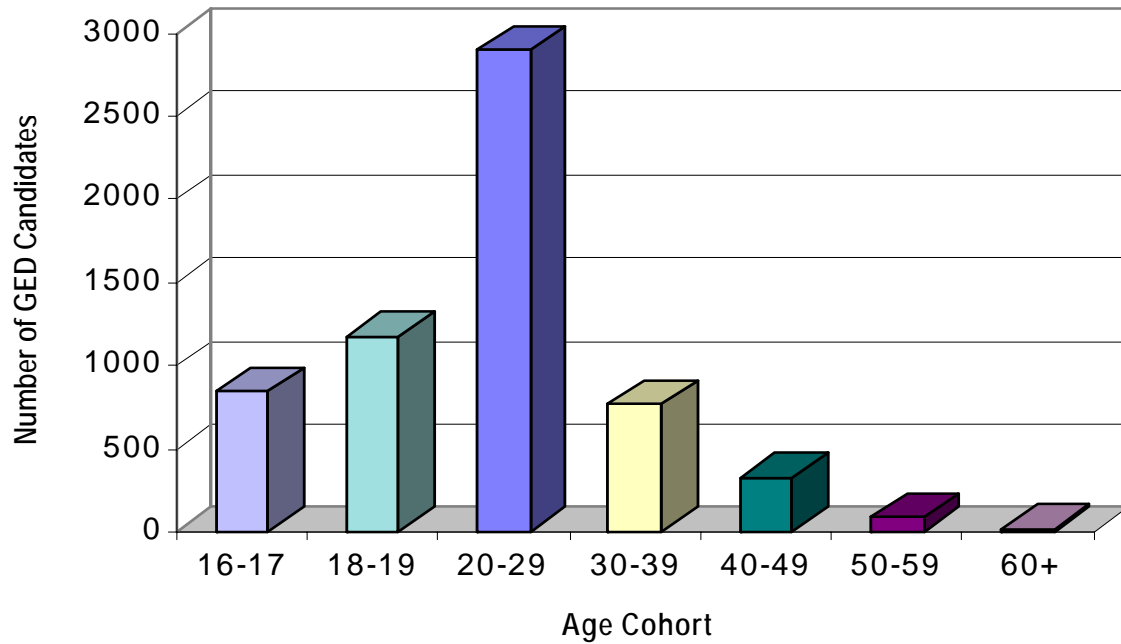
Highest Grade Level Completed	N	Percent
6 or Below	44	.7
7	59	1.0
8	491	8.0
9	1,051	17.2
10	1,956	32.0
11	2,176	35.6
12	162	2.7
12+	42	.7
Unknown/Missing	131	2.1
<b>Total</b>	<b>6,109</b>	<b>100.0</b>

Highest average grade completed is 11.0 compared to the national average of 10.0.

**Source:** 2005 GED Annual Statistical Report, Iowa Department of Education.  
2003 GEDTS Annual Statistical Report, American Council of Education.

GRAPH 4

Number of Iowa GED Candidates  
by Age Cohorts  
for Calendar Year 2005



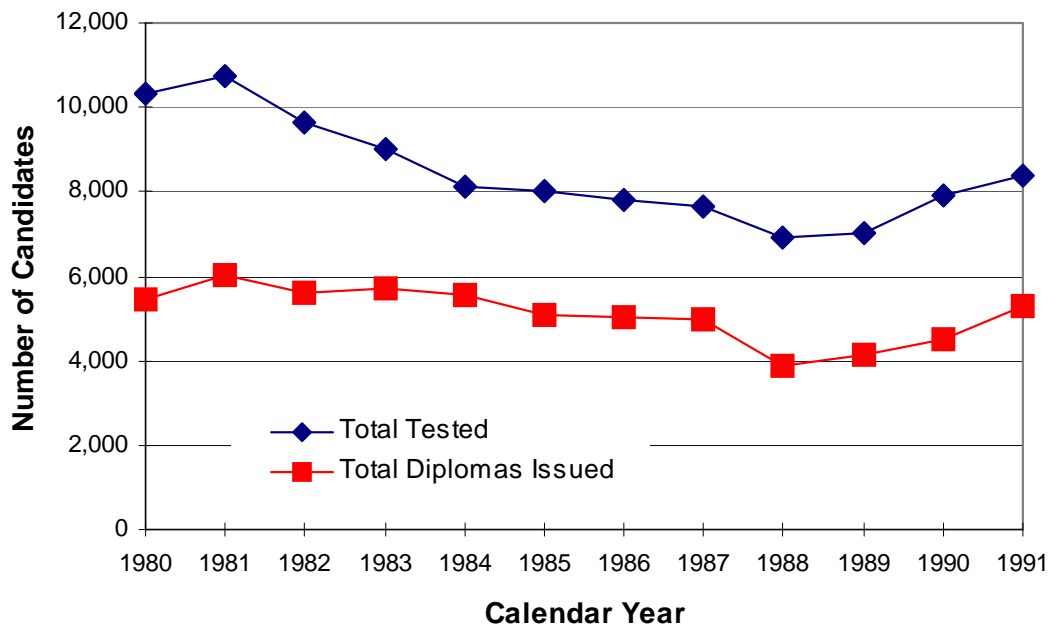
Age Cohort	N	Percent
16-17	843	13.8
18-19	1,174	19.2
20-29	2,899	47.5
30-39	764	12.5
40-49	324	5.3
50-59	87	1.4
60+	18	.3
Total	6,109	100.0

Average age is 24.4 compared to the national average of 24.7.

**Source:** 2005 GED Annual Statistical Report, Iowa Department of Education.  
2003 GEDTS Annual Statistical Report, American Council of Education.

GRAPH 5

A Comparison of  
 1) Total Number of Iowa GED Candidates Tested,  
 2) Number of GED Candidates Who Received the  
 Iowa High School Equivalency Diploma  
 from Calendar Years 1980-1991

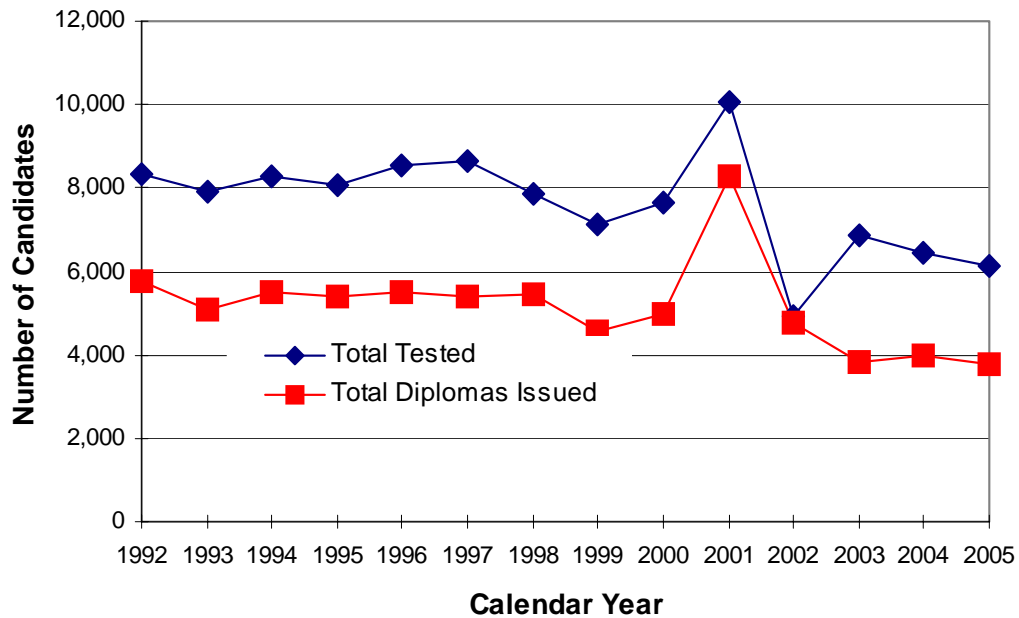


Calendar Year	Total Tested	Total Diplomas Issued
1980	10,342	5,452
1981	10,753	6,024
1982	9,635	5,602
1983	9,035	5,710
1984	8,147	5,531
1985	8,003	5,106
1986	7,832	5,036
1987	7,650	4,957
1988	6,902	3,858
1989	7,027	4,126
1990	7,909	4,497
1991	8,373	5,305

Source: 1992-2005 GED Annual Statistical Reports and 1980-1991 GED Diploma Recipient Reports, Iowa Department of Education.

GRAPH 6

A Comparison of  
 1) Total Number of Iowa GED Candidates Tested,  
 2) Number of GED Candidates Who Received the  
 Iowa High School Equivalency Diploma  
 from Calendar Years 1992-2005



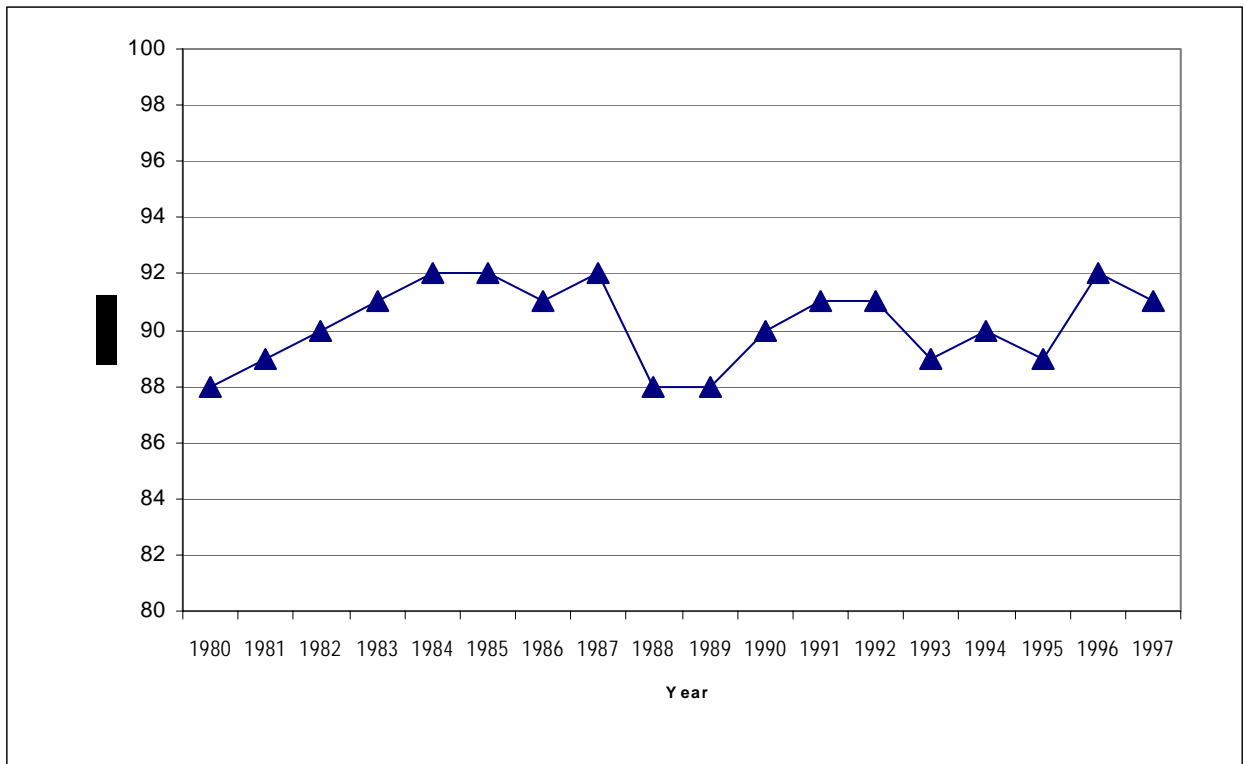
Calendar Year	Total Tested	Total Diplomas Issued
1992	8,348	5,764
1993	7,917	5,063
1994	8,277	5,525
1995	8,044	5,372
1996	8,566	5,525
1997	8,666	5,377
1998	7,871	5,448
1999	7,120	4,544
2000	7,666	4,983
2001	10,061	8,259
2002	*4,915	4,763
2003	6,845	3,845
2004	6,458	3,958
2005	6,109	3,784

\*The test volume decreased due to the change to the GED 2002 tests.

Source: 1992-2005 GED Annual Statistical Reports and 1992-2005 GED Diploma Recipient Reports, Iowa Department of Education.

GRAPH 7

## Iowa's GED Pass Rate by Percent 1980-1991



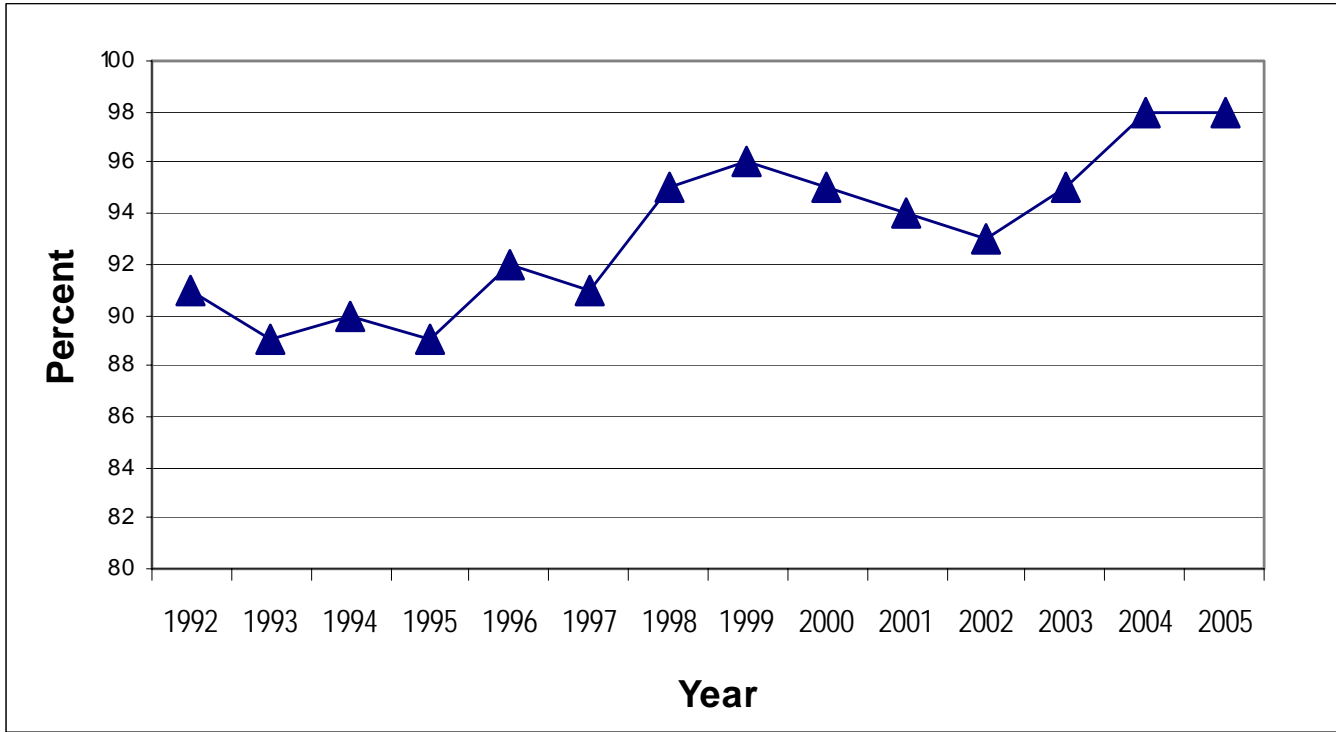
Calendar Year	Pass Rate (Percent)
1980	88
1981	89
1982	90
1983	91
1984	92
1985	92
1986	91
1987	92
1988	88
1989	88
1990	90
1991	91

Source: 1980-1991 GED Annual Statistical Reports, Iowa Department of Education.



GRAPH 8

### Iowa's GED Pass Rate by Percent 1992-2005



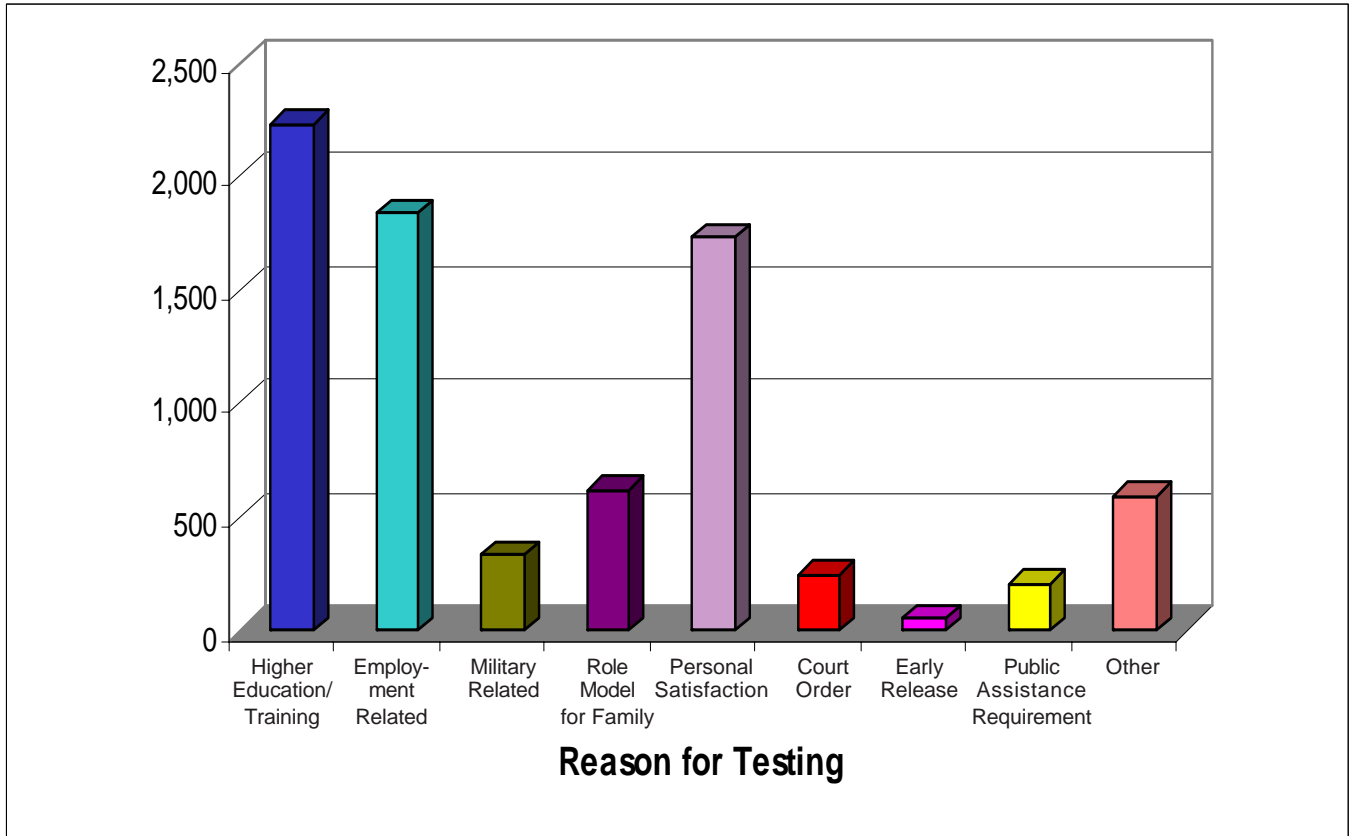
Calendar Year	Pass Rate (Percent)
1992	91
1993	89
1994	90
1995	89
1996	92
1997	91
1998	95
1999	96
2000	95
2001	94
2002	93
2003	95
2004	98
2005	98

The 98 percent pass rate meets the accountability range of 92-95 percent pass rate for Iowa's GED testing program. The national average pass rate is 70.1 percent.

**Source:** 1992-2005 GED Annual Statistical Report:s, Iowa Department of Education.  
2003 GEDTS Annual Statistical Report, American Council of Education.

GRAPH 9

## Reasons for Testing



Reason	N	Percent
Higher Education/Training	2,229	28.4
Employment Related	1,838	23.5
Military Related	333	4.3
Role Model for Family	619	7.9
Personal Satisfaction	1,729	22.1
Court Order	242	3.1
Early Release	49	.6
Public Assistance Requirement	203	2.6
Other	593	7.6
	<u>*7,835</u>	<u>100.0</u>

The three (3) major reasons for testing were: 1) Higher Education/Training (28.4 percent), 2) Employment Related (23.5 percent) and 3) Personal Satisfaction (22.1 percent) .

\* Represents duplicated head count.

Source: 2005 GED Annual Statistical Report, Iowa Department of Education.