

All data presented in this report are provisional and may change as additional reports are received .

See the **Surveillance Methods** page for a detailed description of each component of the Iowa respiratory virus surveillance system including methodology and definitions.

### QUICK STATS FOR WEEK 21

Visit <https://hhs.iowa.gov/influenza/reports> to subscribe to weekly email reports

### INFLUENZA

Overall Influenza Activity: Low

Lab Survey Flu Positive %  
(PCR and Ag)

**0.6%**

Predominant Flu at SHL  
(3 weeks)

**B - Victoria**

Outpatient  
ILI %

**0.72%**

Long Term Care  
Flu Outbreaks

**0**

Flu Hospitalizations -  
All Iowa Hospitals

**1**

Flu Deaths  
Cumulative 2022-23

**142**

### COVID-19

Overall COVID-19 Activity: Low

Lab Survey  
COVID-19 Positive %  
(PCR and Ag)

**3.1%**

Predominant COVID Lineage  
(3 weeks)

**XBB.1.5**

COVID-19 ER Visits - Syndromic  
Surveillance

**161**

COVID-19 Hospitalizations -  
All Iowa Hospitals

**34**

COVID-19 Deaths  
Cumulative 2022-23

**782**

### OTHER RESPIRATORY VIRUSES

Top 3 Pathogen Groups by Positive Percent on Respiratory Virus Survey - Molecular Only

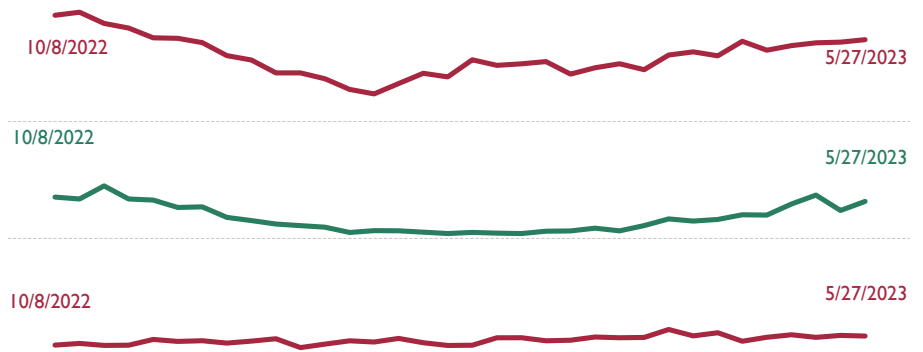
Percent Positive for Current Week

Rhinovirus/Enterovirus  
**23.7%**

Parainfluenza virus  
**11.0%**

Adenovirus  
**6.3%**

Positive Percent by Week

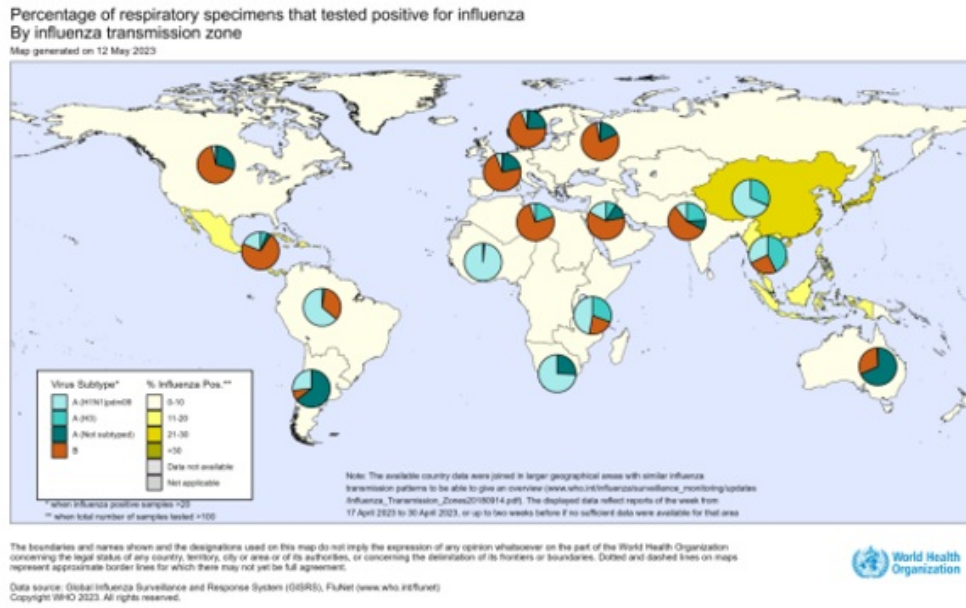


# Iowa Respiratory Virus Surveillance Report

For MMWR week 21  
(May 21, 2023 - May 27, 2023)

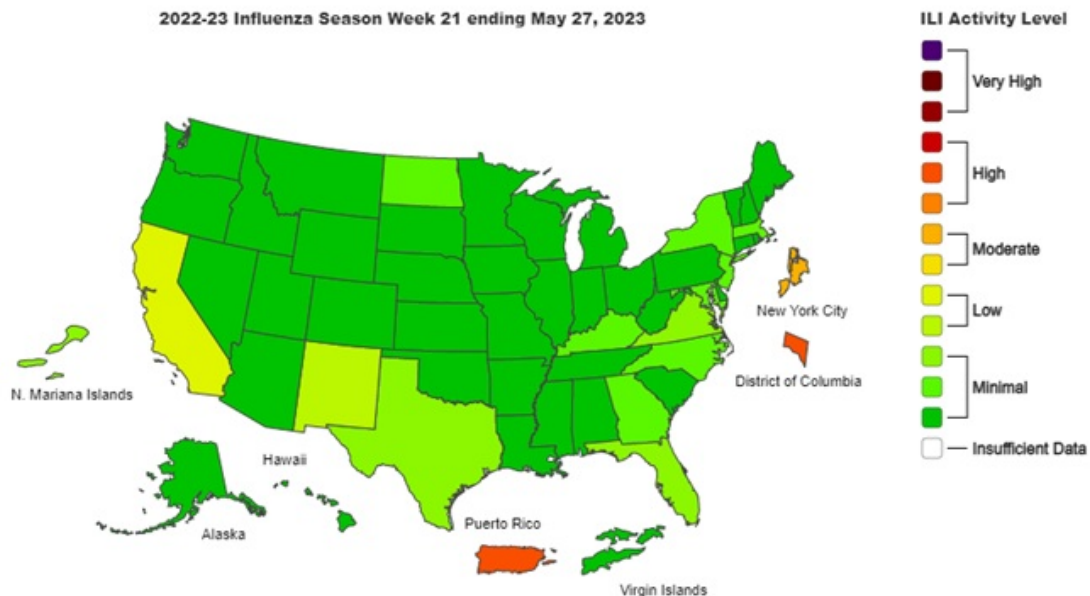
## INTERNATIONAL INFLUENZA ACTIVITY SUMMARY - WHO

Percentage of respiratory specimens testing positive for influenza, by influenza transmission zone<sup>1</sup>. Map generated on 12 May 2023.



**Data Source:** Global Influenza and Response System (GISRS), FluNet ([www.who.int/flu-net](http://www.who.int/flu-net)).  
<https://www.who.int/teams/global-influenza-programme/surveillance-and-monitoring/influenza-updates/current-influenza-update>

## NATIONAL INFLUENZA LIKE ILLNESS (ILI) - CDC

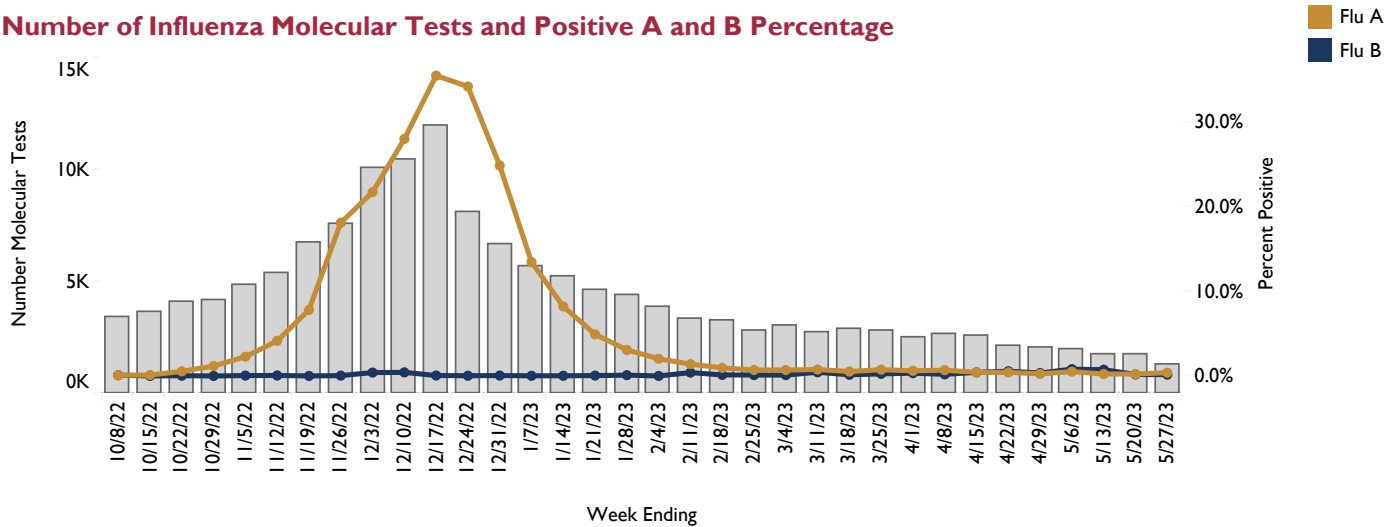


# Iowa Respiratory Virus Surveillance Report

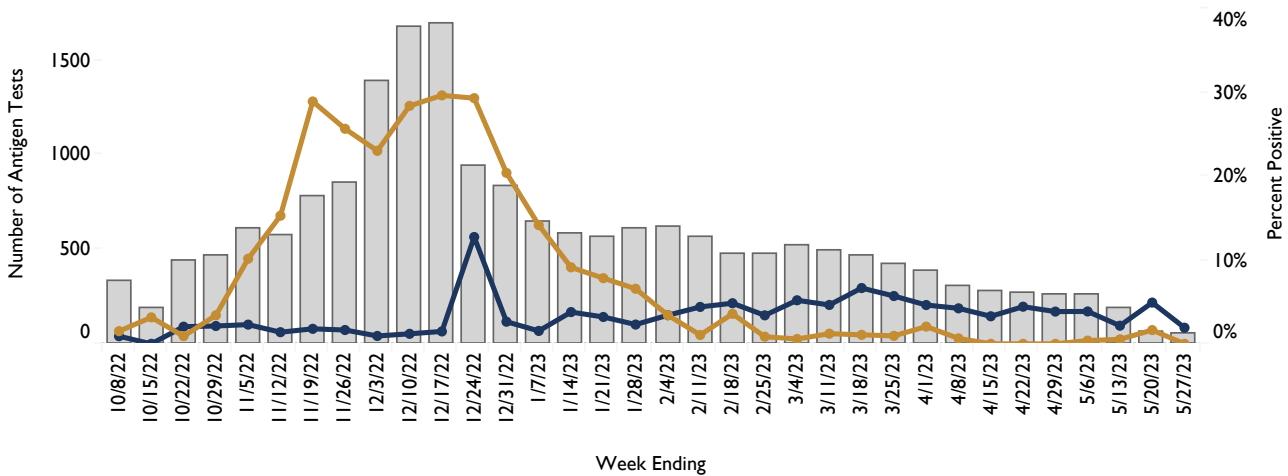
For MMWR week 21  
(May 21, 2023 - May 27, 2023)

## IOWA RESPIRATORY SURVEY - INFLUENZA

### Number of Influenza Molecular Tests and Positive A and B Percentage



### Number of Influenza Antigen Tests and Positive A and B Percentage



### Flu Tests by Region - Current Week

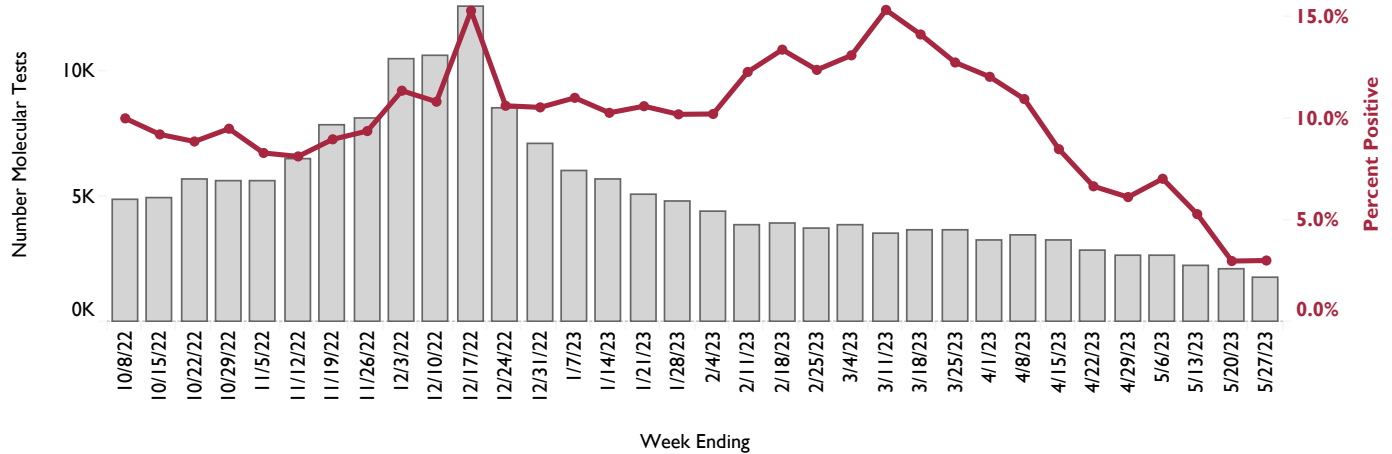
| Flu Region Text | Number Positives | Number Tests | Percent Positive |
|-----------------|------------------|--------------|------------------|
| 1-C             | 1                | 528          | 0.2%             |
| 2-NE            | 0                | 60           | 0.0%             |
| 3-NW            | 1                | 38           | 2.6%             |
| 4-SW            | 1                | 36           | 2.8%             |
| 5-SE            | 0                | 32           | 0.0%             |
| 6-E             | 5                | 650          | 0.8%             |
| Total           | 8                | 1,344        | 0.6%             |

# Iowa Respiratory Virus Surveillance Report

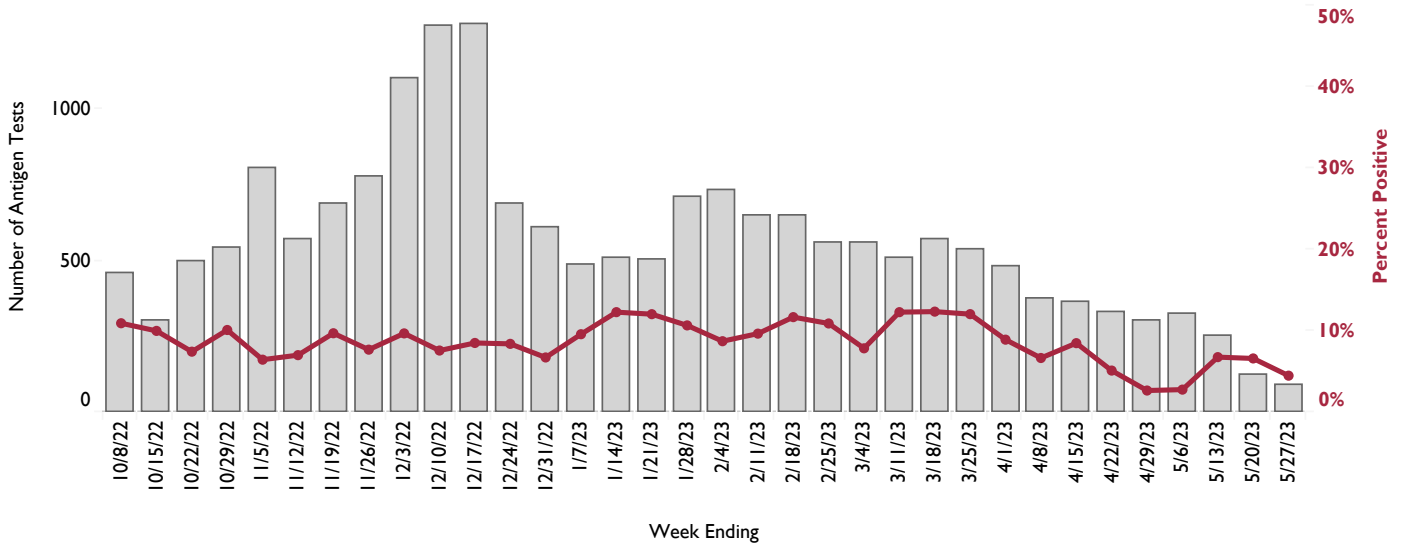
For MMWR week 21  
(May 21, 2023 - May 27, 2023)

## IOWA RESPIRATORY SURVEY - COVID-19

### Number of COVID-19 Molecular Tests and Positive Percentage



### Number of COVID-19 Antigen Tests and Positive Percentage



### COVID-19 Tests and Positivity by Region - Current Week

| Flu Region Text | Number Positives | Number Tests | Percent Positive |
|-----------------|------------------|--------------|------------------|
| 1-C             | 14               | 684          | 2.0%             |
| 2-NE            | 4                | 105          | 3.8%             |
| 3-NW            | 4                | 65           | 6.2%             |
| 4-SW            | 0                | 47           | 0.0%             |
| 5-SE            | 2                | 47           | 4.3%             |
| 6-E             | 33               | 889          | 3.7%             |
| Total           | 57               | 1,837        | 3.1%             |

# Iowa Respiratory Virus Surveillance Report

For MMWR week 21  
(May 21, 2023 - May 27, 2023)

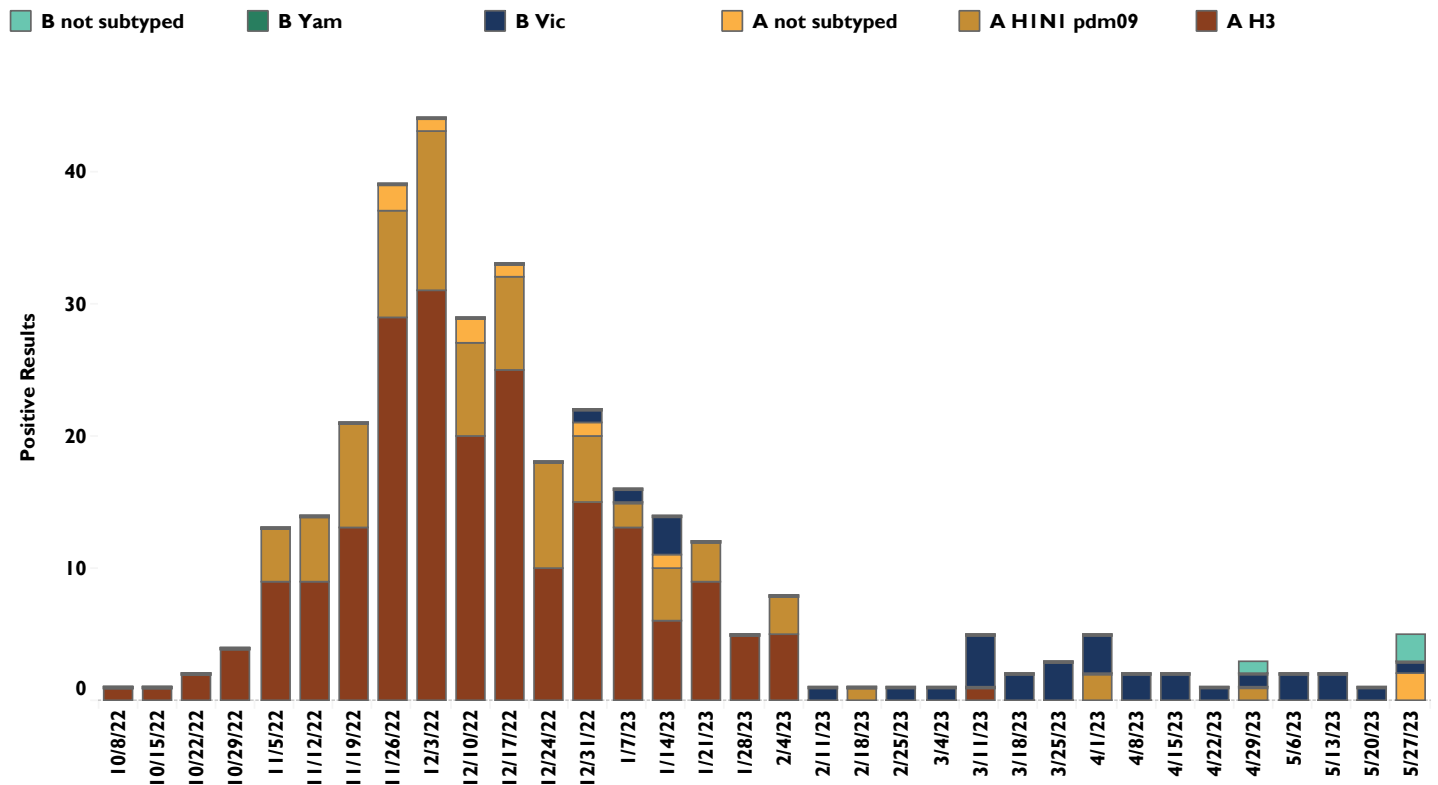
## INFLUENZA TESTING AT THE STATE HYGIENIC LABORATORY (SHL)

### Cumulative Influenza Viruses Detected by SHL by Age Group (10/3/2021 - Current Week)

| Flu Lab Age Group | Influenza A    |              |            | Total      | Influenza B    |           |          | Total     |
|-------------------|----------------|--------------|------------|------------|----------------|-----------|----------|-----------|
|                   | A not subtyped | A H1N1 pdm09 | A H3       |            | B not subtyped | B Vic     | B Yam    |           |
| 0-4               | 0              | 9            | 37         | 46         | 1              | 6         | 0        | 7         |
| 5-17              | 4              | 21           | 58         | 83         | 2              | 6         | 0        | 8         |
| 18-24             | 0              | 8            | 28         | 36         | 0              | 4         | 0        | 4         |
| 25-49             | 1              | 18           | 32         | 51         | 0              | 13        | 0        | 13        |
| 50-64             | 2              | 11           | 11         | 24         | 0              | 3         | 0        | 3         |
| 65 and over       | 3              | 13           | 42         | 58         | 0              | 0         | 0        | 0         |
| Unknown           | 0              | 0            | 0          | 0          | 0              | 0         | 0        | 0         |
| <b>Total</b>      | <b>10</b>      | <b>80</b>    | <b>208</b> | <b>298</b> | <b>3</b>       | <b>32</b> | <b>0</b> | <b>35</b> |

**Table Note:** Only Iowa residents are included. Specimens listed as “not subtyped” may be pending or were not able to be subtyped due to weak positive lab results. This can be due to poor collection, timing of collection or stage of infection.

### Influenza Viruses Detected by SHL by Week (10/3/21 - Current Week)



**SHL Flu Testing Note:** The State Hygienic Laboratory (SHL) is the primary laboratory in Iowa characterizing specimens for influenza surveillance. SHL reports the number of tests performed and the type and subtype/lineage of positive tests to the influenza surveillance network daily. SHL also sends a portion of specimens to CDC for further characterization.

# Iowa Respiratory Virus Surveillance Report

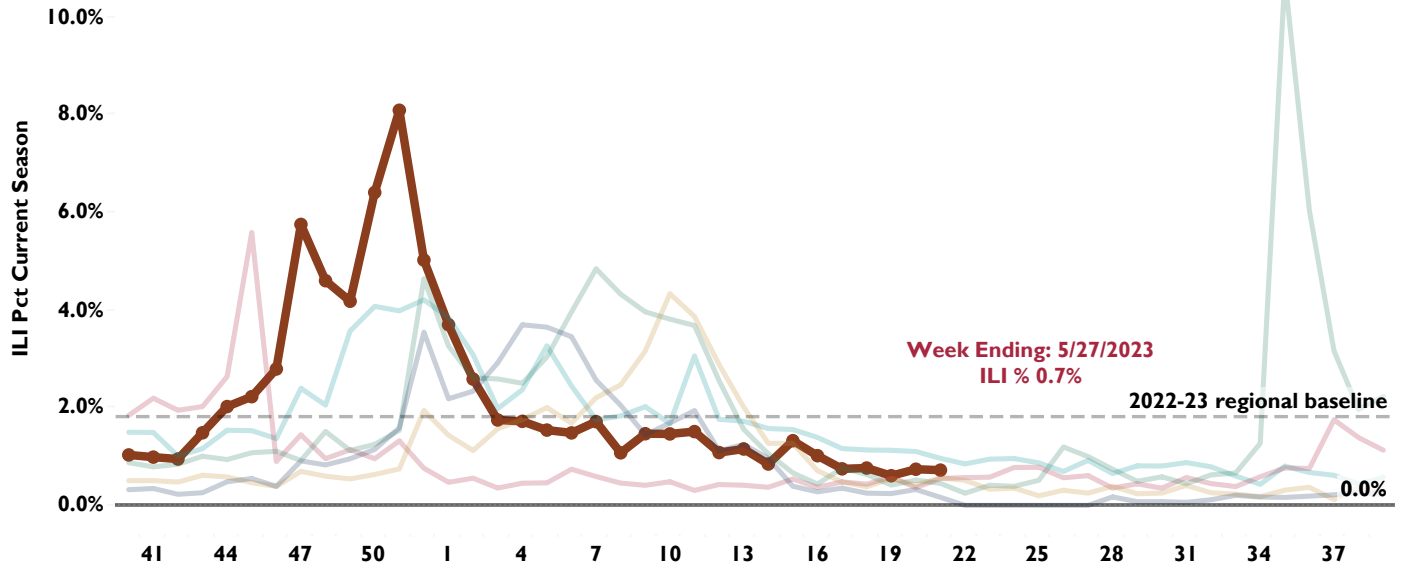
For MMWR week 21  
(May 21, 2023 - May 27, 2023)

## OUTPATIENT HEALTH CARE PROVIDER SURVEILLANCE PROGRAM (ILINET)

Percent Of Outpatient Visits Attributed to Influenza-like Illness (ILI) as Reported by ILINet Sites

2017-18 2018-19 2019-20 2020-21 2021-22 2022-23

### ILI by Season



### ILI by Age Group Past 4 Weeks

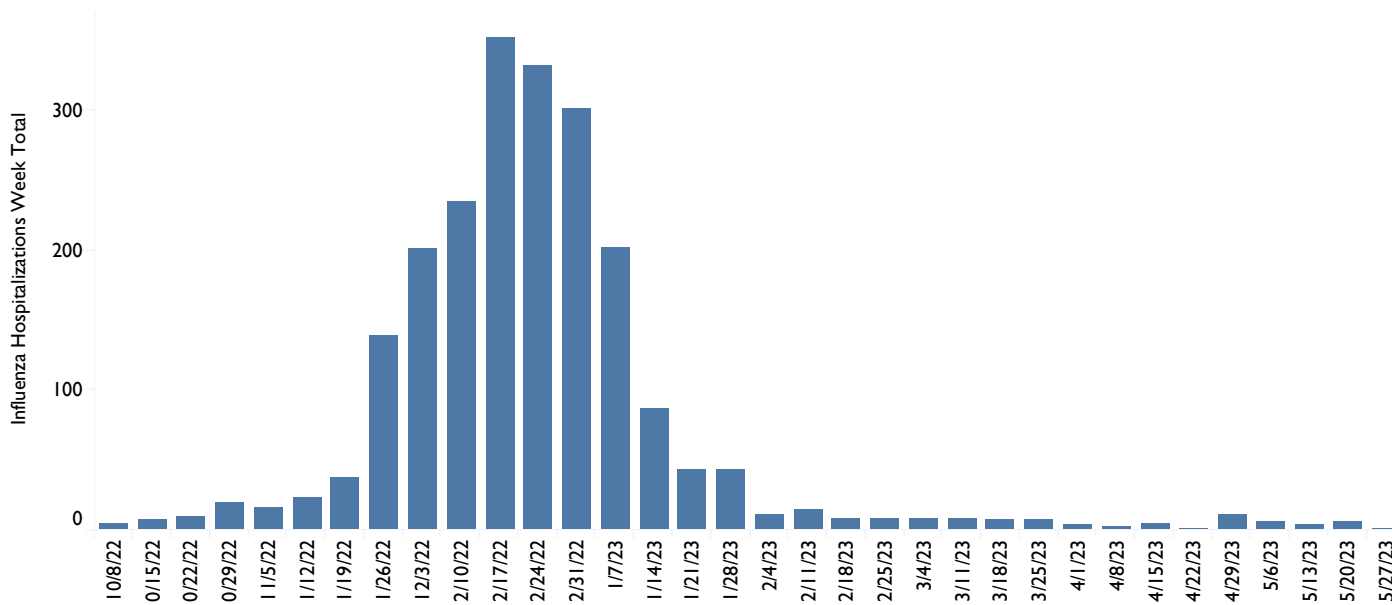
| MMWR Week | End Date  | Age 0-4 | Age 5-24 | Age 25-49 | Age 50-64 | Age 65 and older | Total ILI | ILI Pct |
|-----------|-----------|---------|----------|-----------|-----------|------------------|-----------|---------|
| 18        | 5/6/2023  | 6       | 16       | 7         | 3         | 3                | 35        | 0.77%   |
| 19        | 5/13/2023 | 4       | 9        | 6         | 1         | 4                | 24        | 0.61%   |
| 20        | 5/20/2023 | 6       | 11       | 5         | 2         | 1                | 25        | 0.74%   |
| 21        | 5/27/2023 | 5       | 10       | 4         | 1         | 3                | 23        | 0.72%   |

**Outpatient ILI Note:** Outpatient health care providers who participate in the ILINet (a national influenza surveillance program) report the number of patients seen with influenza-like illness and the total number of patient visits each week. The ILI Definition changed in 2021-22 so that persons with ILI symptoms (cough, sore throat, fever) will be counted even if positive for other respiratory illness (e.g., COVID-19) which makes comparison across seasons difficult.

# Iowa Respiratory Virus Surveillance Report

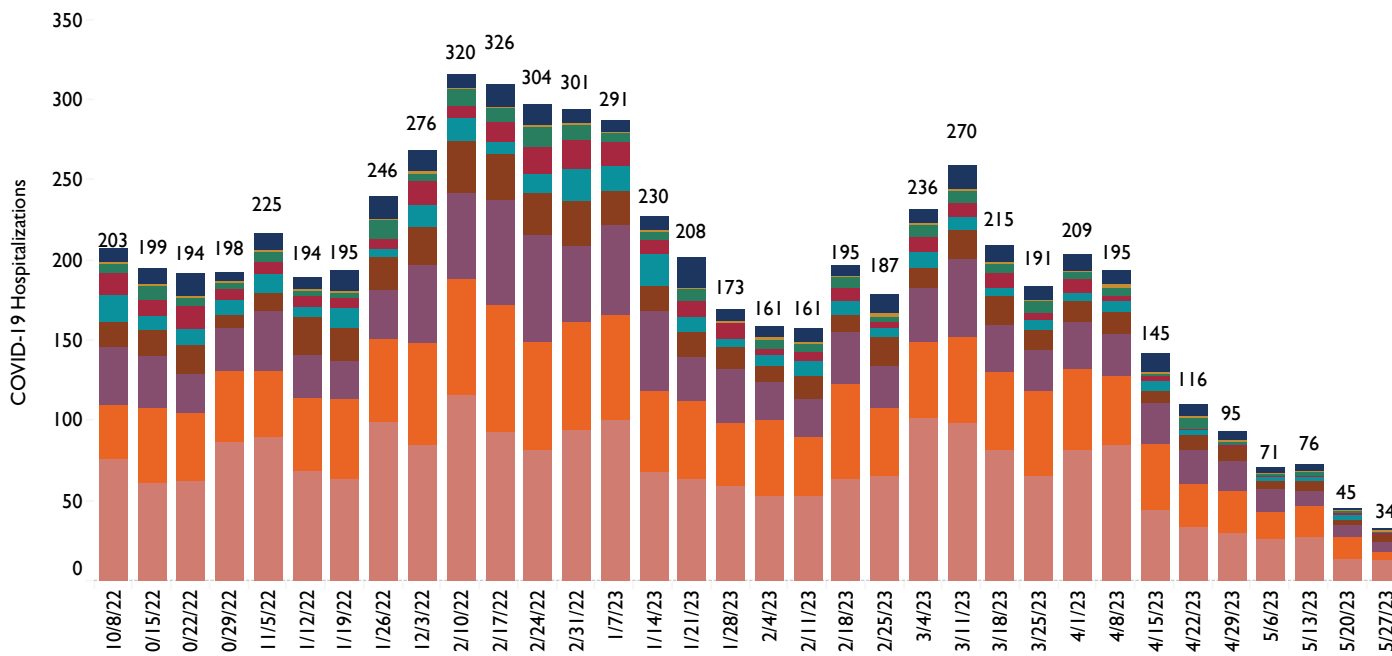
For MMWR week 21  
(May 21, 2023 - May 27, 2023)

## Influenza Hospitalizations by Week at Iowa Hospitals - HealthData.gov



## COVID-19 Hospitalizations by Week - HealthData.gov

- COVID 0-17
- COVID 20-29
- COVID 40-49
- COVID 60-69
- COVID 80+
- COVID 18-19
- COVID 30-39
- COVID 50-59
- COVID 70-79



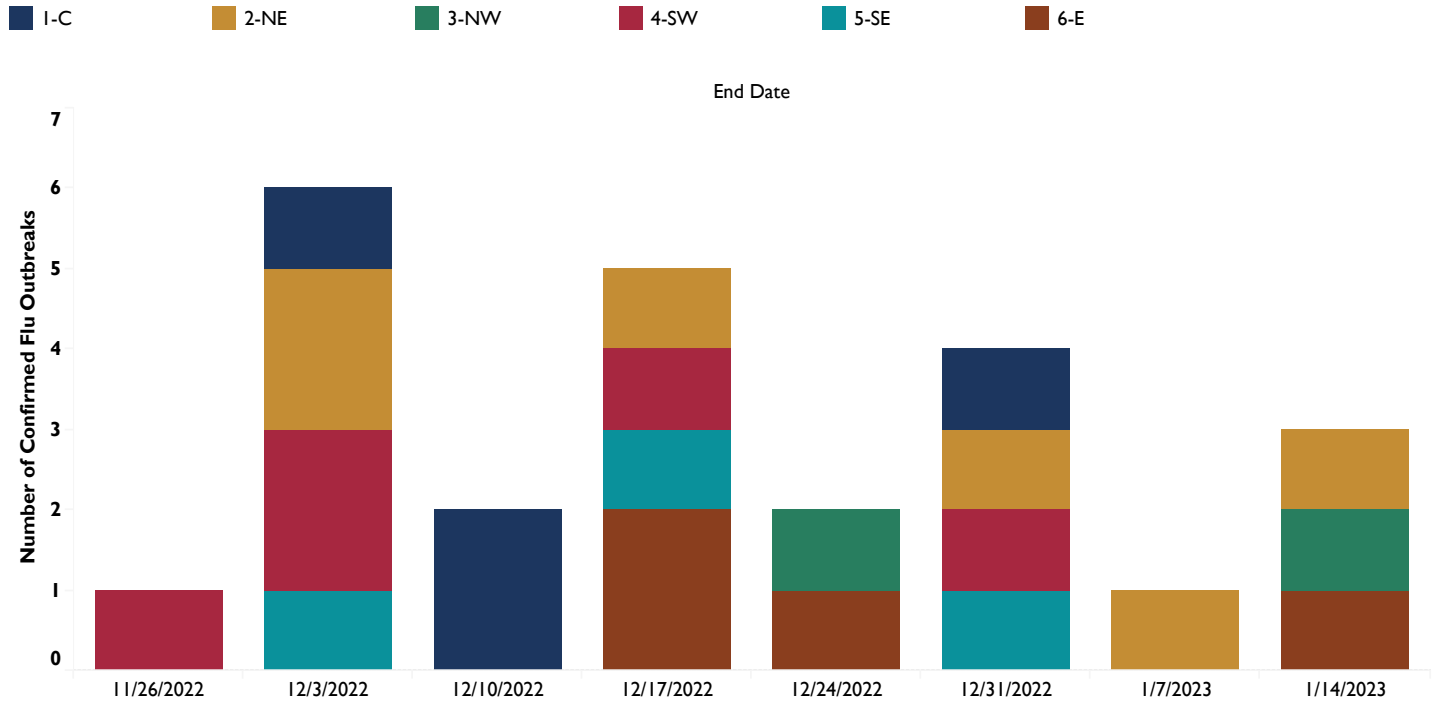
Visit the following site for more information on the dataset used to create these visualizations:  
<https://healthdata.gov/Hospital/COVID-19-Reported-Patient-Impact-and-Hospital-Capa/g62h-syeh>

## Iowa Respiratory Virus Surveillance Report

For MMWR week 21  
(May 21, 2023 - May 27, 2023)

### CONFIRMED LONG TERM CARE FACILITY INFLUENZA OUTBREAKS

#### Confirmed Influenza Outbreaks by Week and Region



**Long Term Care Facility Outbreaks Note:** A confirmed influenza outbreak in a care facility is defined as at least two residents with lab-confirmed influenza in the same area of a facility having an illness onset within 72 hours of each other.

#### Confirmed Long Term Care Influenza Outbreaks by Region

| Iowa Flu Region | Outbreaks Current Week | Outbreaks Cumulative |
|-----------------|------------------------|----------------------|
| I-C             | 0                      | 4                    |
| 2-NE            | 0                      | 6                    |
| 3-NW            | 0                      | 2                    |
| 4-SW            | 0                      | 5                    |
| 5-SE            | 0                      | 3                    |
| 6-E             | 0                      | 4                    |
| <b>Total</b>    | <b>0</b>               | <b>24</b>            |

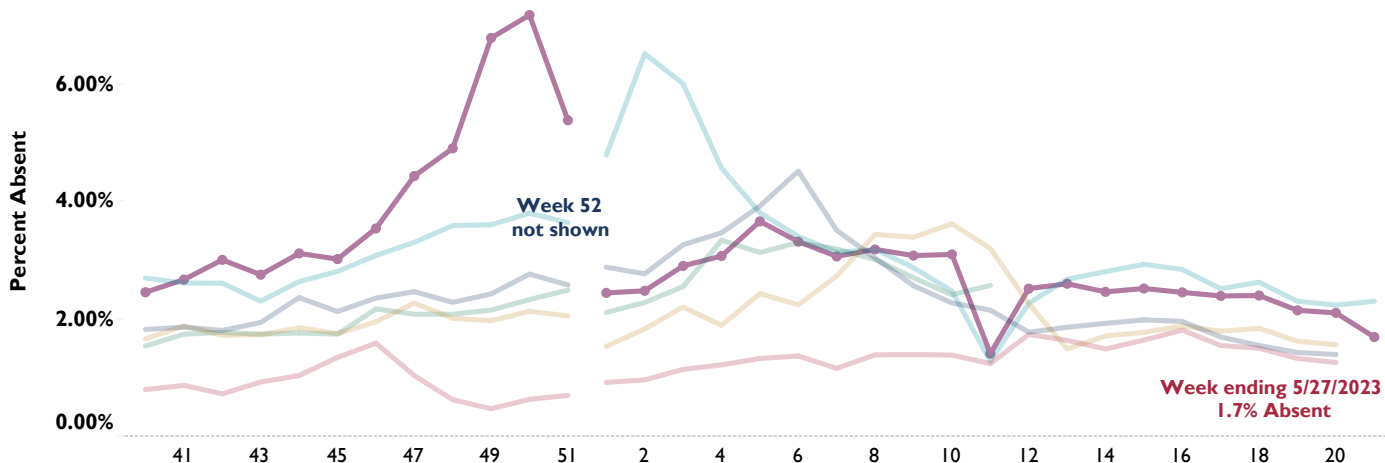


# Iowa Respiratory Virus Surveillance Report

For MMWR week 21  
(May 21, 2023 - May 27, 2023)

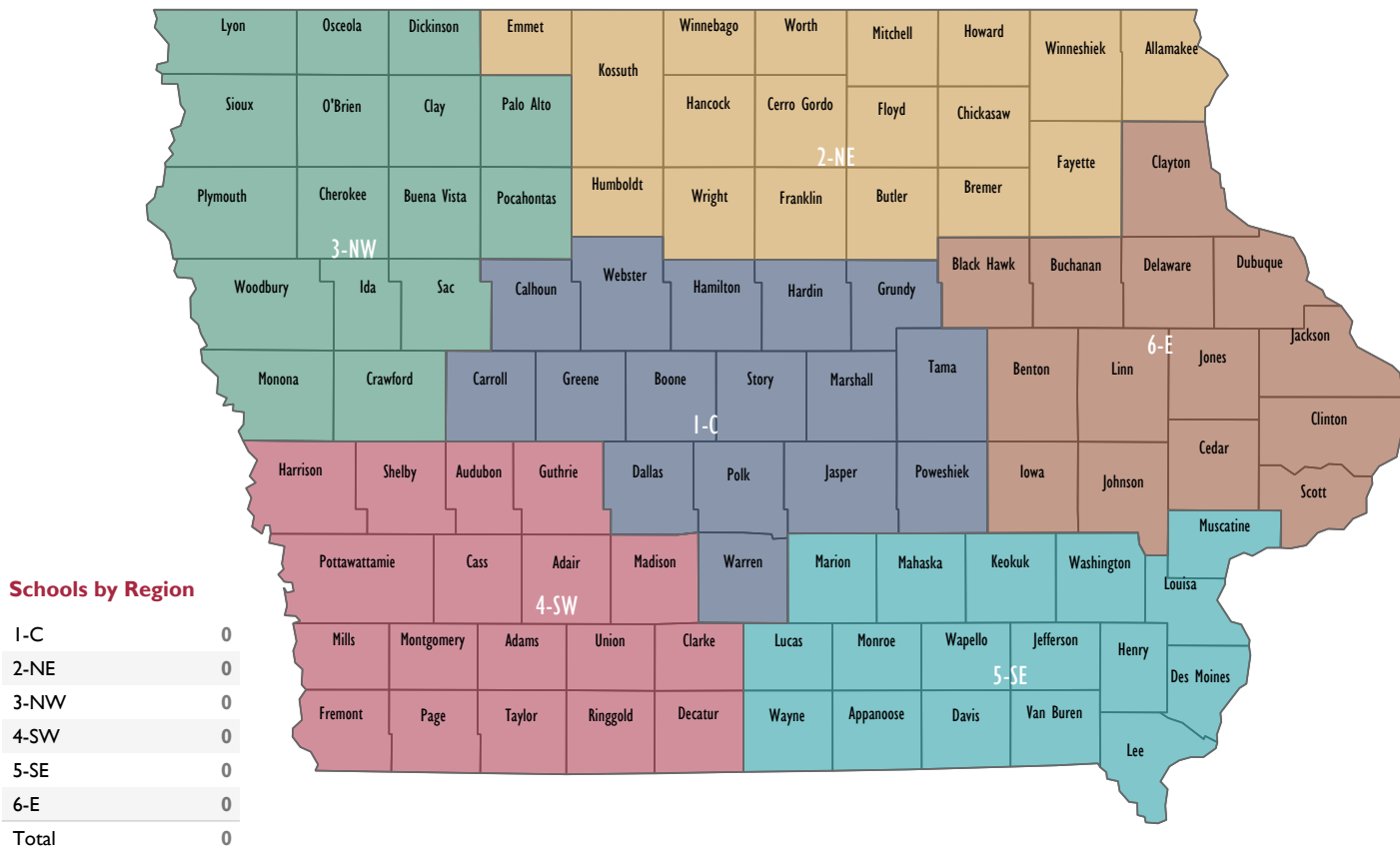


## Percent of Enrolled Students Absent Due to Illness Reported by Sentinel Schools



NOTE: School data for weeks 51-52 are limited due to holiday closings

## Numbers of Schools Reporting 10% Illness by County

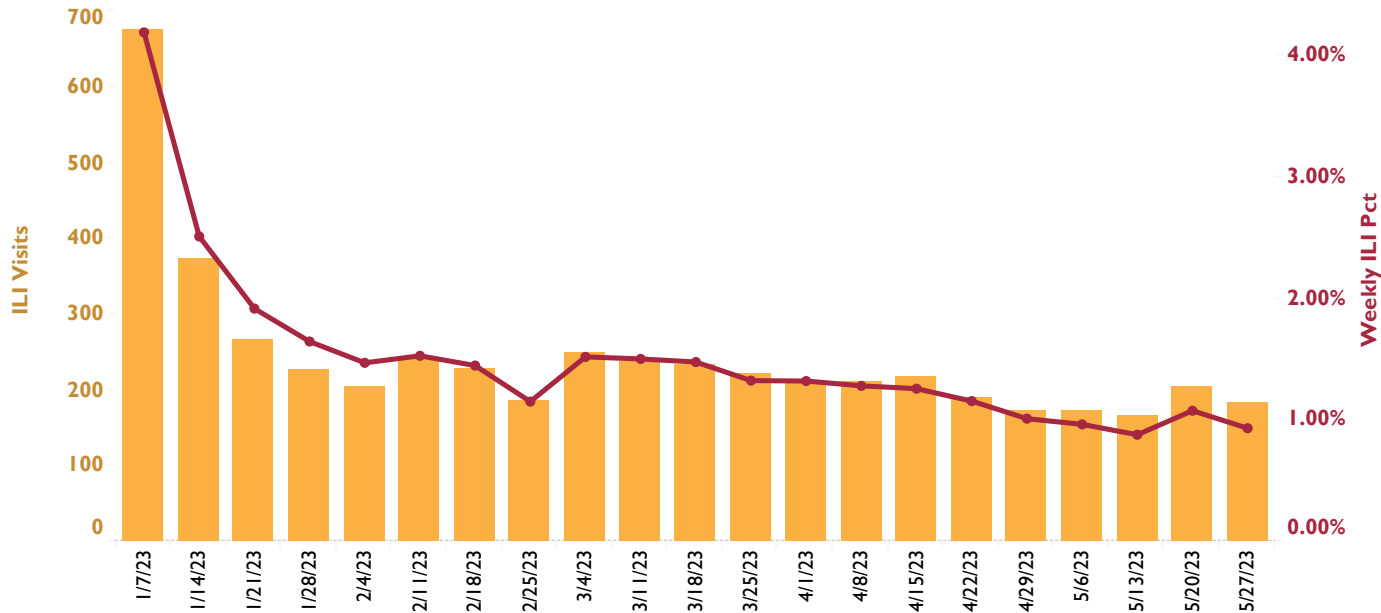


# Iowa Respiratory Virus Surveillance Report

For MMWR week 21  
(May 21, 2023 - May 27, 2023)

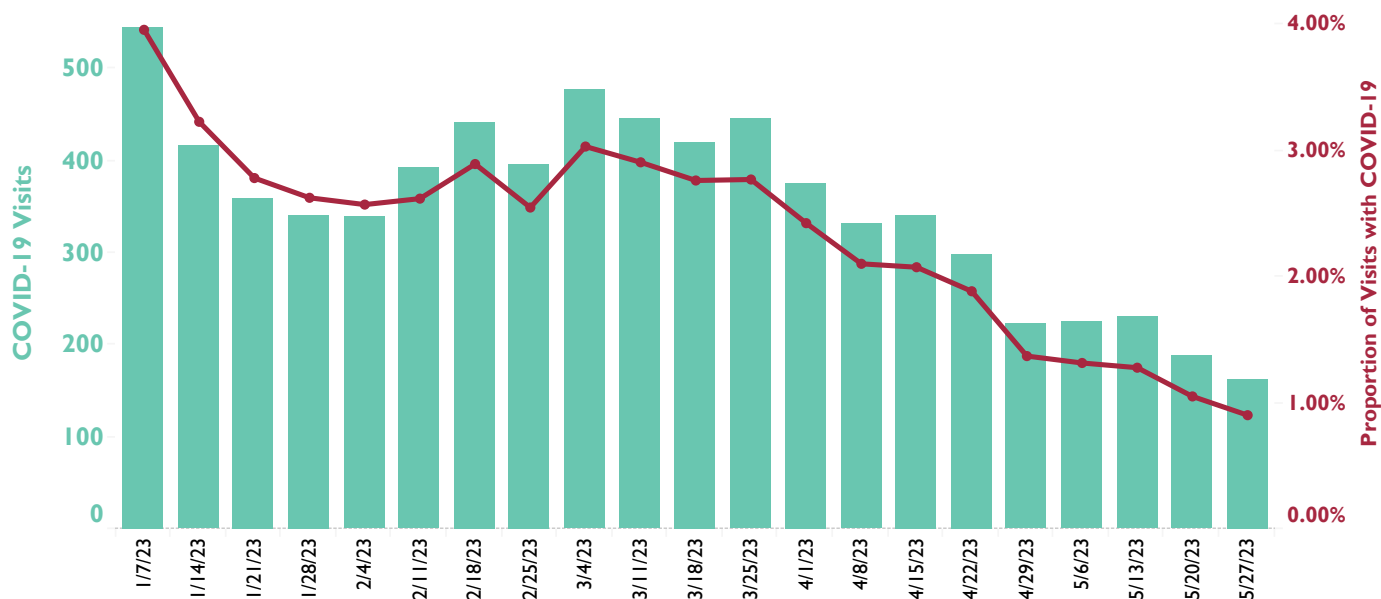
## IOWA SYNDROMIC SURVEILLANCE PROGRAM

### Weekly Count and Proportion of Iowa Emergency Room Visits for Influenza-like Illness



**ILI Percent Definiton:** Proportion of Iowa residents with influenza-like illness by chief complaint or discharge diagnosis as a proportion of all Iowans visiting participating Iowa emergency rooms with a valid chief complaint or discharge diagnosis.

### Weekly Count and Proportion of Iowa Emergency Room Visits for COVID-19



**COVID Definiton:** Weekly count of Iowa residents visiting participating Iowa emergency rooms and who had a COVID-19 discharge diagnosis. Proportion of COVID-19 visits uses the weekly count defined above as the numerator and the total of all Iowans visiting participating Iowa emergency rooms with any valid discharge diagnoses.

# Iowa Respiratory Virus Surveillance Report

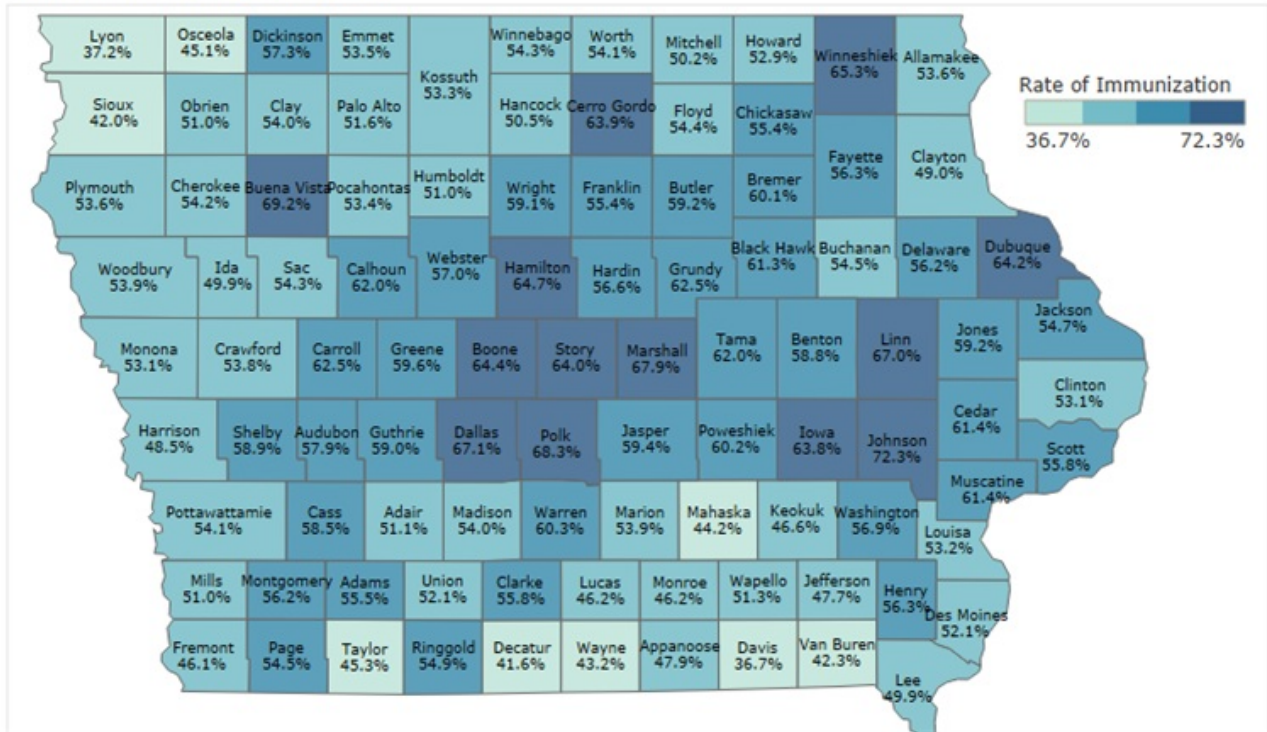
For MMWR week 21  
(May 21, 2023 - May 27, 2023)

## Percent of Iowa Residents Fully Vaccinated for COVID-19 Vaccination by County

### COVID-19 Vaccination Rates

Age Group: All  
Vaccine Status: Fully Vaccinated

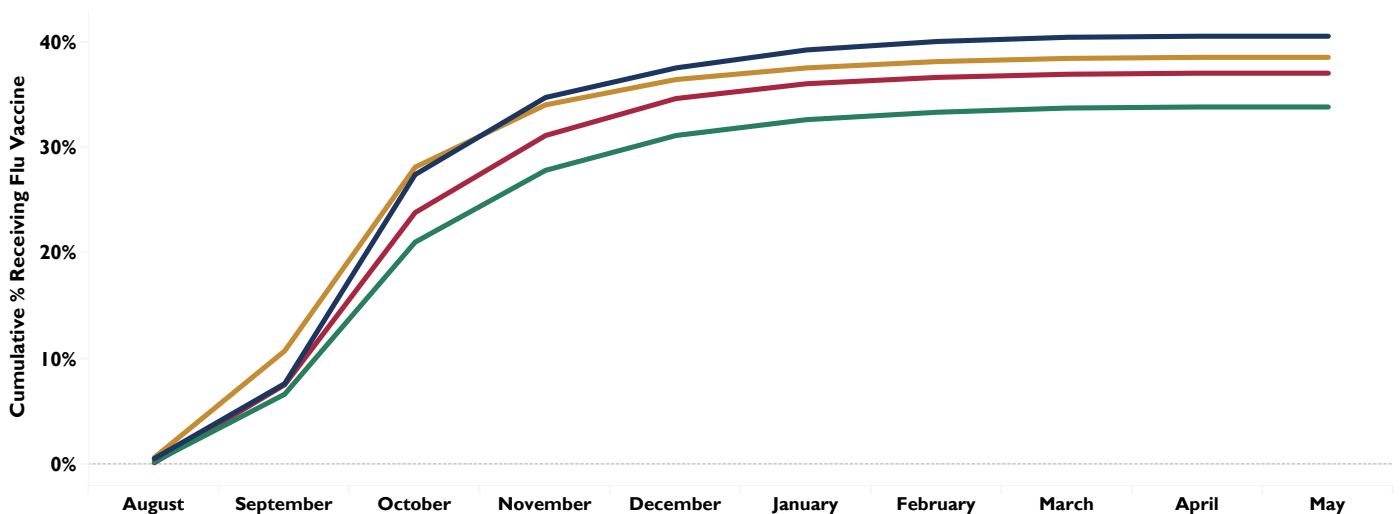
Reported in IRIS as of  
4/30/2023



Data source: <https://tracking.idph.iowa.gov/Health/Immunization/covid-19-vaccine/data>

## Percent of Iowa Residents Receiving Flu Vaccine by Month - Cumulative by Season

2019-2020    2020-2021    2021-2022    2022-2023



Data source: <https://tracking.idph.iowa.gov/Health/Immunization/Influenza-Vaccine/Influenza-Vaccine-Data> (6/2/23)

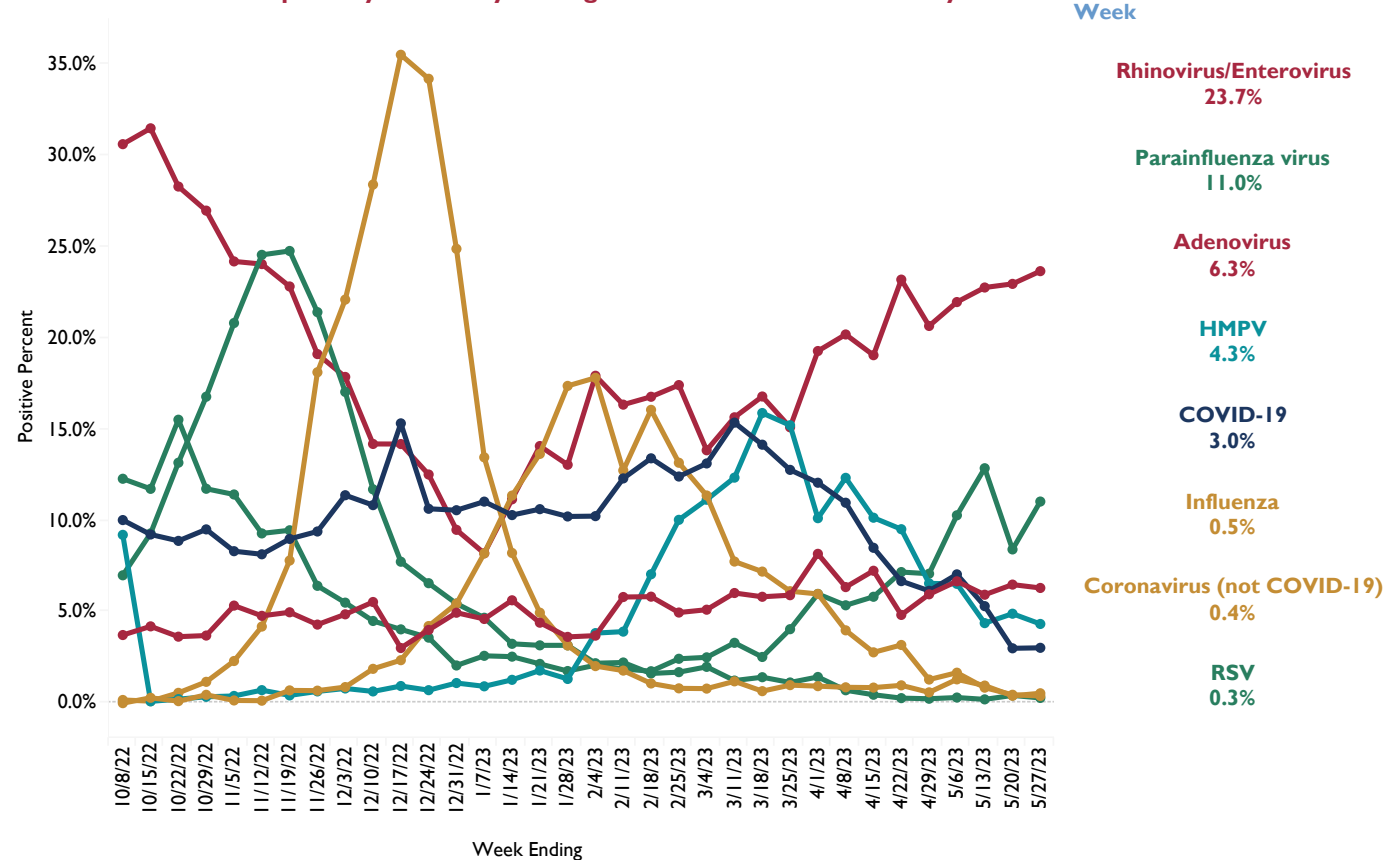
# Iowa Respiratory Virus Surveillance Report

For MMWR week 21  
(May 21, 2023 - May 27, 2023)

## IOWA RESPIRATORY VIRUS SURVEY

Pathogens are grouped together if even if reported to Iowa HHS as separate types or subtypes (e.g., Parainfluenza Viruses 1, 2, 3, and 4). Only pathogens with at least one positive result this season are shown.

### Percent of Positive Respiratory Viruses by Pathogen and Week - Molecular Only



### Top 5 Pathogen Groups by Positive Percent on Respiratory Virus Survey - Molecular Only

#### Percent Positive for Current Week

**Rhinovirus/Enterovirus**  
23.7%

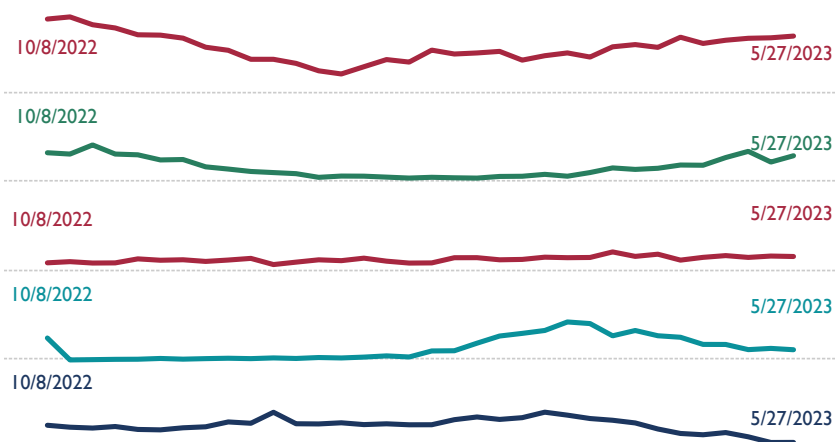
**Parainfluenza virus**  
11.0%

**Adenovirus**  
6.3%

**HMPV**  
4.3%

**COVID-19**  
3.0%

#### Percent Positive by Week



# Iowa Respiratory Virus Surveillance Report

For MMWR week 21  
(May 21, 2023 - May 27, 2023)

## REPORT METHODS, DEFINITIONS AND DATA SOURCES

### NATIONAL INFLUENZA LIKE ILLNESS (ILI) - CDC

The CDC national ILI map shows influenza-like illness, which is determined by symptoms such as fever, cough, and sore throat that can be caused by a number of pathogens in addition to influenza (e.g., COVID-19). Detailed information can be found online at [www.cdc.gov/flu/weekly/](http://www.cdc.gov/flu/weekly/).

### IOWA RESPIRATORY SURVEY

Iowa HHS and SHL run a weekly web-based survey program where laboratorians report the number of influenza, COVID-19 and other respiratory virus tests performed, the testing method (molecular, antigen, or virus isolation) and the number of positive tests.

### INFLUENZA TESTING AT THE STATE HYGIENIC LAB

The State Hygienic Laboratory (SHL) is the primary laboratory in Iowa characterizing specimens for influenza surveillance. SHL reports the number of tests performed and the type and subtype/lineage of positive tests to the influenza surveillance network daily. SHL also sends a portion of specimens to CDC for further characterization.

### OUTPATIENT HEALTH CARE PROVIDER SURVEILLANCE PROGRAM (ILINET)

Outpatient health care providers who participate in ILINet (a national influenza surveillance program) report the number of patients seen with influenza-like illness and the total number of patient visits each week.

### INFLUENZA AND COVID-19 HOSPITALIZATIONS - US HHS

Iowa hospital report COVID-19 hospitalization data to the US Department of Health and Human Services, which includes several questions about influenza hospitalizations. Visit the following site for more information on the dataset used to create this visualization:

<https://healthdata.gov/Hospital/COVID-19-Reported-Patient-Impact-and-Hospital-Capa/g62h-syeh>

### INFLUENZA AND COVID-19 DEATHS:

The Iowa HHS Center for Acute Disease Epidemiology works with the Bureau of Health Statistics to monitor mortality among Iowa residents related to Influenza and COVID-19. Deaths are considered to be influenza-associated when influenza is listed on the death certificate. COVID-associated deaths are determined by diagnosis codes listed on the death certificate.

Both Influenza and COVID-19 death totals are cumulative from the start of the flu season (October 2, 2022 through the end of the current reporting week).

### LONG TERM CARE FACILITY INFLUENZA OUTBREAKS

A confirmed influenza outbreak in a care facility is defined as at least two residents with lab-confirmed influenza in the same area of a facility having an illness onset within 72 hours of each other.

### SCHOOL ILLNESS REPORTING

Iowa HHS works with Iowa schools, local public health and the Iowa Department of Education to track and respond to reports of illness in school in two main groups: 10% daily student absences and sentinel school weekly illness totals. All K-12 schools are asked to report all days where student absences due to illness are at least 10% of expected enrollment. Weekly illness data is from a subset of schools that voluntarily report weekly totals of students ill throughout the school year regardless of the level of illness.

### IOWA SYNDROMIC SURVEILLANCE

Iowa HHS, CyncHealth Iowa and CDC started implementing syndromic surveillance for the state of Iowa in May 2021. Iowa continues to enroll hospitals to participate and currently has over 70 hospitals participating. Syndromic surveillance provides public health with a near real time system for detecting, understanding, and monitoring health events based on symptoms and diagnoses of patients visiting participating hospitals.

### INFLUENZA AND COVID-19 IMMUNIZATIONS

Seasonal influenza vaccination data in Iowa is based on doses reported to the Iowa Immunization Registry Information System (IRIS) for Iowans. IRIS is a confidential, computerized, population-based system that tracks immunization for children, adolescents and adults who are seen at public and private healthcare provider sites throughout the state of Iowa. The data for the current influenza season is updated weekly and there may be a lag between the vaccine administration date and the date reported to IRIS.

COVID-19 vaccine data is also based on doses data reported to IRIS, but the COVID-19 vaccine data is updated monthly.