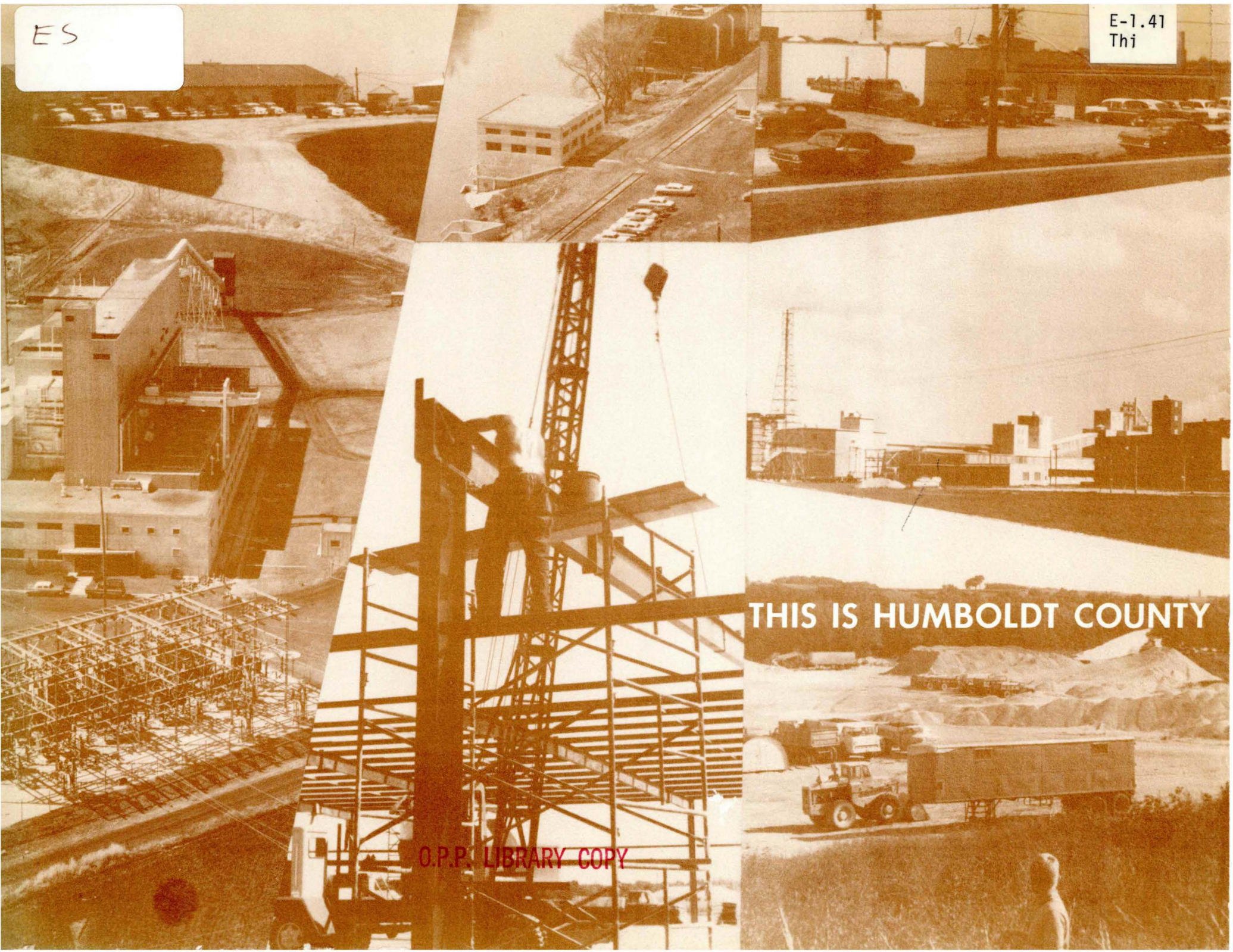


ES

E-1.41  
Thi



THIS IS HUMBOLDT COUNTY

O.P.P. LIBRARY COPY



GUNDER MANUFACTURING COMPANY  
Dakota City, Iowa

CORN BELT POWER  
COOPERATIVE  
Dakota City, Iowa

CHANTLAND COMPANY, INC.  
Humboldt, Iowa

AGRICO-AMERICAN AGRICULTURAL  
CHEMICAL COMPANY  
Humboldt, Iowa

SLIFER MANUFACTURING  
COMPANY  
Humboldt, Iowa

CORN BELT POWER COOPERATIVE  
Humboldt, Iowa

P & M STONE COMPANY  
Rutland, Iowa



**THIS IS HUMBOLDT COUNTY**

**Manpower Resources**

**Manpower Occupation Potential Inventory**

**Area Skill Study**

**Facts About Humboldt County**

**COMMUNITY DEVELOPMENT PROGRAM  
IOWA EMPLOYMENT SECURITY COMMISSION  
IOWA STATE EMPLOYMENT SERVICE**

**September, 1965**

**O.P.P. LIBRARY COPY**



## Preface

The overall purpose of the Community Development Program of the Iowa Employment Security Commission is to provide smaller communities with assistance in planning and carrying out their economic self-improvement programs. Of course, the ultimate success of the program depends on the community and its efforts to help itself. However, through the cooperation and participation of various agencies and organizations, the smaller community can receive comprehensive assistance.

As its part in achieving the overall goal, the Iowa Employment Security Commission offers a broad range of service geared to meet the needs of the particular community. These services are designed to aid the community by

1. Determining the current and potential manpower resources of the area.
2. Assisting in evaluating the overall economic resources of the area.
3. Assisting in developing a program of economic development.
4. Providing individuals with employment counseling and placement on jobs within and outside the area as well as making information on training opportunities and labor market facts available.

The IESC believes that the future of our Nation and our State depends on the best utilization of all our resources. The smaller community and each one of its residents are a vital part of our complex, changing economy. Their economic security now and in the future is important not only to them but to all of us. The Iowa Employment Security Commission and its Iowa State Employment Service are happy to welcome the opportunity and challenge of working with smaller communities and their people as they chart their future.



## Table of Contents

Humboldt County Development Program . . . . .	vii
Two New State Laws Aid Economic Growth . . . . .	ix
Acknowledgements. . . . .	xi
Highlights of Humboldt County Manpower Occupational Potential Inventory . . . . .	xiii
Manpower Occupational Potential Inventory . . . . .	1
Tabulation 1 - Humboldt County Applicants Occupational Potential for Material Working . . . . .	7
Tabulation 2 - Humboldt County Supplemental Information . . . . .	25
Tabulation 3 - Primary Occupations of Humboldt County Applicants by Age and Sex. . . . .	29
Tabulation 4 - Occupations for Which Applicants Show Potential by Sex. . . . .	45
Tabulation 5 - Humboldt County Applicants by Their Highest Occupational Potential. . . . .	59
Manpower Resources. . . . .	69
Chapter I - Summary Description of Humboldt County and Its Economy . . . . .	71
Chapter II - Humboldt County's People. . . . .	77
Chapter III - Humboldt County's Labor Force. . . . .	89
Area Skill Inventory. . . . .	97
Facts About Humboldt County . . . . .	



## Humboldt County Development Program

Officials of Iowa Growthland requested the services of the Iowa Employment Security Commission's Community Development Program during January, 1965. Under this program Humboldt County was the first northwest Iowa county to be served. Eventually it is hoped that all six counties of Iowa Growthland will participate. The combined tabulation of the human resources of these six counties will represent a potent force in attracting industries into the area as well as serving as an invaluable aid in helping existing industries plan expansions.

At the local level the Humboldt County Study was sponsored by the Humboldt County Development Corporation and the Humboldt-Dakota City Chamber of Commerce. The mobile team of the IESC Community Development Program moved into Humboldt March 3, 1965 and operated in the county through June 3.

The mobile team consisted of a rural area representative and two counselors who were responsible for application taking, testing, counseling and placement. Temporary clerical help was secured from within the area.

A total of 1,065 persons from Humboldt County and the surrounding area participated in the program. The General Aptitude Test Battery was given to 376 persons.

Application files used in compiling the tabulations in this report are located in the Ft. Dodge office of the Iowa State Employment Service.



## TWO NEW STATE LAWS AID IN IOWA ECONOMIC GROWTH

The Iowa Revenue Bond Law, passed by the 1963 General Assembly, allows cities and towns to construct and lease buildings for industrial firms and to pay for these facilities by issuing revenue bonds. Its purpose is to aid economic development of communities where local investment capital is lacking and to help provide employment opportunity in areas of declining population.

The constitutionality of this new law was questioned because of the use of public funds for private industry. A friendly test case was brought. The Iowa Supreme Court unanimously held that the new law "does not violate the constitutional prohibition against giving or loaning the credit of the state," and that no loss of tax revenue is permitted. "The weight of the authority is that a public use is served and public welfare promoted."

In 1965 the General Assembly passed another law that enabled municipalities to equip as well as build facilities for leasing to industry.

These two new laws and the decision of the Iowa Supreme Court is upholding the Revenue Bond Law is having and should continue to have a stimulating effect on Iowa's economy in the future. Top-caliber manufacturing firms will now have tangible evidence of community interest in their operations. Progressive Iowa cities and towns seeking growth, a healthier economy, and more job opportunities for their residents can use the provisions of these laws to their advantage.



### ACKNOWLEDGEMENTS

The success of the Humboldt Manpower Study was dependent upon the cooperation of many groups and individuals. The Iowa Employment Security Commission wishes to express its appreciation to all those who helped make the Manpower Study possible.

Sponsorship of the Mobile Team program in Humboldt County was shared by the Humboldt County Development Corporation and the Humboldt-Dakota City Chamber of Commerces. Many other organizations gave their endorsement and support to the Humboldt County Study:

Rotary Club  
Kiwanis Club  
Business & Professional Women's Club  
Lions Club  
Various Service Clubs in Livermore, Bode,  
Dakota City and Renwick  
T.V. Station KQTV in Fort Dodge  
"The Reminder"  
Humboldt Republican & Independent  
High School Senior Girls of Humboldt  
County Superintendent's Office  
Junior Chamber of Commerce  
Humboldt County Ministerial Association  
Various Church Groups  
Humboldt County Extension Director's Office  
Extension Council  
Humboldt County Farm Bureau  
School Boards and Administrators throughout the County



Highlights of Humboldt County  
Manpower Occupational Potential Inventory

Employment Status: During the survey period, a total of 693 workers---503 women and 190 men---were not employed.

Earnings: At the time of the study, 63 women and 19 men of the employed workers had earnings of \$1.25 an hour or less. Of those who were not employed at the time of the survey, 423 women and 159 men had earned \$1.25 an hour or less on their last job. However a large percentage of the unemployed group were homemakers who had not worked for a number of years or were new entrants into the labor market.

Versatile Work Force: The Mobile Team processed 1065 persons or 30.2 percent of the Humboldt County labor force. Applicants averaged 4.6 occupational fields of work for which they were qualified either through experience or aptitudes which were measured by the administration of the General Aptitude Test Battery.

Educational Level: Among the survey participants, 126 persons had an education beyond the high school level while 845 had finished the 11th or 12th years of high school. Another 48 had completed the 9th or 10th year of high school and 46 had an eighth grade education or less.

Applicants  
Occupational  
Potential for  
Employment in  
Selected  
Industries:

	Total	Men	Women
Metal Working	801	393	408
Wood Working	764	359	405
Stone & Glass Working	779	392	387
Plastic & Paint	728	336	392
Fabric, Leather & Related	695	297	398
Paper Working	622	260	362
Food Working	537	147	395
Electrical Working	535	172	363

Detailed information is available at the Iowa Employment Security Commission, 1000 East Grand Avenue, Des Moines, Iowa 50319.



HUMBOLDT COUNTY  
MANPOWER OCCUPATIONAL POTENTIAL INVENTORY

TABULATIONS INCLUDE

- \* EMPLOYMENT POTENTIAL IN SELECTED INDUSTRIES
- \* SUPPLEMENTAL INFORMATION
- \* PRIMARY OCCUPATIONS BY AGE AND SEX
- \* OCCUPATIONAL POTENTIAL BY SEX
- \* HIGHEST OCCUPATIONAL POTENTIAL



Humboldt County  
Manpower Occupational Potential Inventory

The Manpower Occupational Potential Inventory presents five tabulations outlining the occupational potential of Humboldt County residents.

In Tabulation No. 1, Applicants' Occupational Potential for Employment in Selected Industries, applicants are listed only once in each industrial category. However, each applicant is counted in all industrial categories in which he shows qualifications. Proper usage of this tabulation should result in the full utilization of the human resources of the area. Selected material working industries are metal, wood, stone and glass, plastic and paint, fabric, leather and related, paper, food and electrical.

In Tabulation No. 2, Supplemental Information shows the desired work shifts of the employed and unemployed; the hourly wage received on the last job by the employed and unemployed by sex; the mobility of the workforce by sex, marital status and home ownership; and the educational attainment of the applicants.

In Tabulation No. 3, Applicant File By Primary Occupation, Sex and Age, Humboldt County participants are classified according to Volume I of the Dictionary of Occupational Titles. Entry applicants are participants who have insufficient or no actual work, experience and could not be assigned a primary occupational code.

In Tabulation No. 4, Occupations for Which Applicants Show Potential By Sex, the total picture of all the applicants skills and abilities are expressed by occupational potential. Part IV of the Dictionary of Occupational Titles was used exclusively and through interviewing in depth, primary occupational codes were converted into potential code or codes for which the applicant qualified. Additional potential skills of workers who had a primary occupational code were determined through General Aptitude Test Battery. Applicants with insufficient or no work experience were classified according to their various potential fields of work. Since many workers have more than one potential, there are more occupational codes than actual applicants and the total number of persons potentially qualified for each field of work is pointed out.

In Tabulation No. 5, Applicants File By Highest Potential, the highest potential code of each individual is tallied to avoid the double counting necessary in Tabulation No. 4.



## Explanation of Entry Classifications

This an explanation which delineates the major occupational groups for entry classifications used in Tabulations 1, 3, 4, and 5, of this report.

### 0-X PROFESSIONAL, TECHNICAL AND MANAGERIAL WORK:

Persons having the qualifications necessary for entry into work requiring the capacity to acquire and apply special knowledges involved in artistic creation, entertainment, social service work, teaching, scientific study, research, engineering, law, business relations or management.

### 1-X CLERICAL AND SALES WORK:

Persons having the qualifications necessary for entry into work involving recording, transcribing, composing, compiling, transmitting and systematizing written communications and records, computing or compiling mathematical or statistical data, or dealing with the public in business situations to effect sales, give information, or perform other commercial or administrative services.

### 2-X SERVICE WORK:

Persons having the qualifications necessary for entry into work that involves ministering to the needs of others in preparing foods, serving meals, caring for children and in other types of personal service activities.

### 3-X AGRICULTURAL, MARINE AND FORESTRY WORK:

Persons having the qualifications necessary for entry work involving the raising and harvesting of crops; the breeding, care, catching and hunting of fish and other animals; the handling of boats; the preservation of forest; the gathering of forest products and other related outdoor activities.

### 4-X MECHANICAL WORK:

Persons having the qualifications necessary for entry into work in which the independent judgment of the worker determines the machine and manual operations to be performed in obtaining the proper form, quality and quantity of material to be produced. Workers may be required to lay out work; to estimate quality, suitability, and needed quantities of materials; to make precise measurements; to read blueprints or other specifications; and to make necessary computations or mechanical adjustments to control or regulate processes.

### 6-X MANUAL WORK:

Persons having the qualifications necessary for entry into work in which the form, quality and quantity of the work depend primarily on prescribed methods and on the performance of machines or equipment or on the use of hands or hand tools. Workers may be required to observe the operation of machines, feed machines and to perform other repetitive and physical tasks.

NOTE: Both 4-X Mechanical Work and 6-X Manual Work may require alertness and facility in the use of tools, as well as other types of coordinated activity. However, in 6-X Manual Work these qualities are the primary distinguishing characteristics of applicant suitability, whereas in 4-X Mechanical Work these characteristics are secondary to the work's ability to make decisions and exercise independent judgment, frequently in a wide variety of task situations. For these reasons an additional classification in 6-X is not normally necessary to express the qualifications of applicants who have been classified in 4-X.



TABULATION NO. 1 - HUMBOLDT COUNTY APPLICANTS' OCCUPATIONAL POTENTIAL FOR MATERIAL WORKING

June, 1965



### Explanation of Tabulation No. 1

The potential skills of Humboldt County applicants are related to specific industries in this tabulation. Applicants are classified in the specific industry according to major fields of work. The total number of potential workers has been broken down to show the number of men and women.

TABULATION NO. 1 - HUMBOLDT COUNTY APPLICANTS BY OCCUPATIONAL POTENTIAL FOR MINERAL WORKING

Page 1, cont.



# SUMMARY OF

## TABULATION NO. 1 - HUMBOLDT COUNTY APPLICANTS' OCCUPATIONAL POTENTIAL FOR MATERIAL WORK

OCCUPATIONAL FIELD	TOTAL	MEN	WOMEN
Metal Working	801	393	408
Wood Working	764	359	405
Stone and Glass Working	779	392	387
Plastic and Paint Working	728	336	392
Fabric, Leather & Related Materials Working	695	297	398
Paper Working	622	260	362
Food Working	537	142	395
Electrical Working	535	172	363



---

TABULATION NO. 1 - HUMBOLDT COUNTY APPLICANTS' OCCUPATIONAL POTENTIAL FOR MATERIAL WORKING

---

METAL WORKING	TOTAL	MEN	WOMEN
<u>Managerial</u>	11	11	
O-X8.4 Managerial Work, Industrial	7	7	
O-X8.41 Managerial Work, Manufacturing	4	4	
<u>Machining Skilled</u>	70	66	4
4-X2.0 Machining	4	4	
4-X2.01 Metal Machining	3	3	
4-X2.4 Complex Machine Operating (n.e.c.)*	41	38	3
4-X2.49 Hauling, Hoisting and Drilling Machine Operating	8	8	
4-X2.492 Hauling Machine Operating	13	13	
4-X2.493 Hoisting Machine Operating	1		1
<u>Machining Semi-Skilled</u>	67	32	35
6-X2.4 Machine Tending (n.e.c.)*	33	4	29
6-X2.49 Hauling, Hoisting and Drilling Machine Operating	10	10	
6-X2.492 Hauling Machine Operating	15	15	
6-X4.4 Machine Operating, Manipulative	9	3	6
<u>Bench Work Skilled</u>	276	47	229
4-X6.3 Bench Crafts	274	45	229
4-X6.31 Bench Work, Metal	2	2	
<u>Bench Work Semi-Skilled</u>	32	8	24
6-X4.3 Bench Work, Assembling & Related	32	8	24

N.E.C.\* - Not Elsewhere Classified



---

TABULATION NO. 1 - HUMBOLDT COUNTY APPLICANTS' OCCUPATIONAL POTENTIAL FOR MATERIAL WORKING

---

METAL WORKING	TOTAL	MEN	WOMEN
<u>Structural Skilled</u>	206	196	10
4-X6.2 Structural Crafts	122	112	10
4-X6.21 Structural Work, Metal	2	2	
4-X6.217 Plumbing and Related	1	1	
4-X6.28 Welding and Related	60	60	
4-X6.280 Combination Welding	12	12	
4-X6.281 Arc Welding	9	9	
<u>Structural Semi-Skilled</u>	11	10	1
6-X4.2 Structural Work	5	4	1
6-X4.21 Structural Work, Metal	2	2	
6-X4.213 Simple Light Metal Structural Work	3	3	
6-X4.281 Welding and Related	1	1	
<u>Processing Skilled</u>	91	9	82
4-X6.6 Processing	91	9	82
<u>Processing Semi-Skilled</u>	5	3	2
6-X2.6 Processing Equipment Tending	5	3	2
<u>Inspecting Semi-Skilled</u>	32	11	21
6-X2.3 Inspecting and Testing	26	9	17
6-X2.38 Inspecting and Testing	3	1	2
6-X2.381 Simple Visual Inspecting	3	1	2



---

TABULATION NO. 1 - HUMBOLDT COUNTY APPLICANTS' OCCUPATIONAL POTENTIAL FOR MATERIAL WORKING

---

WOOD WORKING	TOTAL	MEN	WOMEN
<u>Managerial Work</u>	20	19	1
0-X8.3 Managerial Work, Geographical	5	5	
0-X8.4 Managerial Work, Industrial	11	10	1
0-X8.41 Managerial Work, Manufacturing	4	4	
<u>Extractive Work</u>	2	2	
3-X9.9 Forest Work	2	2	
<u>Machining Skilled</u>	14	14	
4-X2.0 Machining	14	14	
<u>Machining Semi-Skilled</u>	68	33	35
6-X2.4 Machine Tending (n.e.c.)*	59	30	29
6-X4.4 Machine Operating, Manipulative	8	2	6
6-X4.429 Misc. Woodworking Machine Operating	1	1	
<u>Bench Work Skilled</u>	274	45	229
4-X6.3 Bench Crafts	244	25	219
4-X6.32 Bench Work, Wood	29	19	10
4-X6.320 All-Around Cabinet, Pattern, or Model Making	1	1	
<u>Bench Work Semi-Skilled</u>	33	9	24
6-X4.3 Bench Work, Assembling and Related	30	6	24
6-X4.32 Bench or Shop Work, Wood	1	1	
6-X4.320 Wood Unit Assembling	2	2	

N.E.C.\* - Not Elsewhere Classified



TABULATION NO. 1 - HUMBOLDT COUNTY APPLICANTS' OCCUPATIONAL POTENTIAL FOR MATERIAL WORKING

WOOD WORKING	TOTAL	MEN	WOMEN
<u>Structural Skilled</u>	214	204	10
4-X6.2 Structural Crafts	157	147	10
4-X6.22 Structural Work, Wood	54	54	
4-X6.220 Wood Structural Work, Carpentry	3	3	
<u>Structural Semi-Skilled</u>	11	10	1
6-X4.2 Structural Work	10	9	1
6-X4.22 Structural Work, Wood	1	1	
<u>Processing Skilled</u>	91	9	82
4-X6.6 Processing	91	9	82
<u>Processing Semi-Skilled</u>	5	3	2
6-X2.6 Processing Equipment Tending	5	3	2
<u>Inspecting Semi-Skilled</u>	32	11	21
6-X2.3 Inspecting and Testing	26	9	17
6-X2.38 Inspecting and Testing	3	1	2
6-X2.381 Simple Visual Inspecting	3	1	2

O.P.P. LIBRARY COPY



---

TABULATION NO. 1 - HUMBOLDT COUNTY APPLICANTS' OCCUPATIONAL POTENTIAL FOR MATERIAL WORKING

---

STONE AND GLASS WORKING		TOTAL	MEN	WOMEN
<u>Managerial</u>		11	11	
0-X8.4	Managerial Work, Industrial	7	7	
0-X8.41	Managerial Work, Manufacturing	4	4	
<u>Machining Skilled</u>		74	69	5
4-X2.0	Machining	7	7	
4-X2.4	Complex Machine Operating (n.e.c.)*	43	39	4
4-X2.49	Hauling, Hoisting and Drilling Machine Operating	8	8	
4-X2.492	Hauling Machine Operating	15	15	
4-X2.493	Hoisting Machine Operating	1		1
<u>Machining Semi-Skilled</u>		67	32	35
6-X2.4	Machine Tending (n.e.c.)*	33	4	29
6-X2.49	Hauling, Hoisting and Drilling Machine Operating	10	10	
6-X2.492	Hauling Machine Operating	15	15	
6-X4.4	Machine Operating, Manipulative	9	3	6
<u>Bench Work Skilled</u>		335	47	288
4-X6.3	Bench Crafts	335	47	288
<u>Bench Work Semi-Skilled</u>		32	8	24
6-X4.3	Bench Work, Assembling and Related	32	8	24
<u>Structural Skilled</u>		212	201	11
4-X6.2	Structural Crafts	209	198	11
4-X6.23	Structural Work, Stone or Glass	2	2	
4-X6.233	Glass or Tile Setting	1	1	

N.E.C.\* - Not Elsewhere Classified

STONE AND GLASS WORKING



---

TABULATION NO. 1 - HUMBOLDT COUNTY APPLICANTS' OCCUPATIONAL POTENTIAL FOR MATERIAL WORKING

---

STONE AND GLASS WORKING	TOTAL	MEN	WOMEN
<u>Structural Semi-Skilled</u>	11	10	1
6-X4.2 Structural Work	11	10	1
<u>Processing Semi-Skilled</u>	5	3	2
6-X2.6 Processing Equipment Tending	5	3	2
<u>Inspecting Semi-Skilled</u>	32	11	21
6-X2.3 Inspecting and Testing	26	9	17
6-X2.38 Inspecting and Testing	3	1	2
6-X2.381 Simple Visual Inspecting	3	1	2



---

TABULATION NO. 1 - HUMBOLDT COUNTY APPLICANTS' OCCUPATIONAL POTENTIAL FOR MATERIAL WORKING

---

PLASTIC AND PAINT WORKING	TOTAL	MEN	WOMEN
<u>Managerial</u>	17	16	1
O-X8.4 Managerial Work, Industrial	13	12	1
O-X8.41 Managerial Work, Manufacturing	4	4	
<u>Bench Work Skilled</u>	288	51	237
4-X6.3 Bench Crafts	288	51	237
<u>Bench Work Semi-Skilled</u>	33	9	24
6-X4.3 Bench Work, Assembling and Related	28	4	24
6-X4.34 Bench Work, Plastic Materials and Paint	2	2	
6-X4.346 Simple Shop Painting	3	3	
<u>Structural Skilled</u>	234	224	10
4-X6.2 Structural Crafts	197	197	
4-X6.24 Structural Work, Plastic Materials	34	24	10
4-X6.244 Plastic Materials Spreading	1	1	
4-X6.246 Structural Painting	2	2	
<u>Structural Semi-Skilled</u>	11	10	1
6-X4.2 Structural Work	11	10	1
<u>Processing Skilled</u>	99	10	89
4-X6.6 Processing	98	9	89
4-X6.60 Processing, Assorted Materials	1	1	



---

TABULATION NO. 1 - HUMBOLDT COUNTY APPLICANTS' OCCUPATIONAL POTENTIAL FOR MATERIAL WORKING

---

PLASTIC AND PAINT WORKING	TOTAL	MEN	WOMEN
<u>Processing Semi-Skilled</u>	10	4	6
6-X2.6 Processing Equipment Tending	4	2	2
6-X2.604 Non-Metal Heat Drying, Room or Machine	1	1	
6-X4.6 Processing	4	1	3
6-X4.60 Processing, Assorted Materials	1		1
<u>Inspecting Semi-Skilled</u>	36	12	24
6-X2.3 Inspecting and Testing	30	10	20
6-X2.38 Inspecting and Testing	3	1	2
6-X2.381 Simple Visual Inspecting	3	1	2



---

TABULATION NO. 1 - HUMBOLDT COUNTY APPLICANTS' OCCUPATIONAL POTENTIAL FOR MATERIAL WORKING

---

FABRIC, LEATHER AND RELATED MATERIALS	TOTAL	MEN	WOMEN
<u>Managerial</u>	18	18	
0-X8.4 Managerial Work, Industrial	13	13	
0-X8.41 Managerial Work, Manufacturing	5	5	
<u>Machining Skilled</u>	166	162	4
4-X2.4 Complex Machine Operating (n.e.c.)*	166	162	4
<u>Machining Semi-Skilled</u>	72	38	34
6-X2.4 Machine Tending (n.e.c.)*	64	35	29
6-X4.4 Machine Operating, Manipulative	8	3	5
<u>Bench Work Skilled</u>	276	47	229
4-X6.3 Bench Crafts	59	35	24
4-X6.35 Bench Work, Fabric, Leather and Related	9	4	5
4-X6.351 Fiber Working, Hand Weaving and Related	11		11
4-X6.352 Garment and Cloth Working	193	5	188
4-X6.353 Upholstering	1	1	
4-X6.355 Leather Working	3	2	1
<u>Bench Work Semi-Skilled</u>	32	8	24
6-X4.3 Bench Work, Assembling and Related	13	7	6
6-X4.35 Bench Work, Fabric, Leather and Related	3		3
6-X4.351 Hand Sewing and Related	3	1	2
6-X4.352 Machine Sewing	13		13

N.E.C.\* - Not Elsewhere Classified



---

TABULATION NO. 1 - HUMBOLDT COUNTY APPLICANTS' OCCUPATIONAL POTENTIAL FOR MATERIAL WORKING

---

FABRIC, LEATHER & RELATED MATERIALS	TOTAL	MEN	WOMEN
<u>Processing Skilled</u>	91	9	82
4-X6.6 Processing	88	7	81
4-X6.60 Processing, Assorted Materials	1	1	
4-X6.651 Fabric and Leather Treating, Dyeing and Related	2	1	1
<u>Processing Semi-Skilled</u>	8	4	4
6-X2.6 Processing Equipment Tending	5	3	2
6-X4.6 Processing	3	1	2
<u>Inspecting Semi-Skilled</u>	32	11	21
6-X2.3 Inspecting and Testing	26	9	17
6-X2.38 Inspecting and Testing	3	1	2
6-X2.381 Simple Visual Inspecting	3	1	2



---

TABULATION NO. 1 - HUMBOLDT COUNTY APPLICANTS' OCCUPATIONAL POTENTIAL FOR MATERIAL WORKING

---

FOOD WORKING	TOTAL	MEN	WOMEN
<u>Managerial</u>	24	23	1
O-X8.4 Managerial Work, Industrial	19	18	1
O-X8.41 Managerial Work, Manufacturing	5	5	
<u>Machining Semi-Skilled</u>	73	39	34
6-X2.4 Machine Tending (n.e.c.)*	65	36	29
6-X4.4 Machine Operating, Manipulative	8	3	5
<u>Bench Work Skilled</u>	275	47	228
4-X6.3 Bench Crafts	270	45	225
4-X6.37 Bench Work, Foods and Related	2	1	1
4-X6.375 Bakery Bench Work	2		2
4-X6.376 Meat Dressing	1	1	
<u>Bench Work Semi-Skilled</u>	33	9	24
6-X4.3 Bench Work, Assembling and Related	32	9	23
6-X4.379 Misc. Food Handling and Related	1		1
<u>Processing Skilled</u>	91	9	82
4-X6.6 Processing	10	3	7
4-X6.67 Processing, Foods and Related	64	2	62
4-X6.671 Mixing, Compounding and Cooking, Foods and Related	4	4	
4-X6.675 Baking	13		13

N.E.C.\* - Not Elsewhere Classified



---

TABULATION NO. 1 - HUMBOLDT COUNTY APPLICANTS' OCCUPATIONAL POTENTIAL FOR MATERIAL WORKING

---

FOOD WORKING		TOTAL	MEN	WOMEN
<u>Processing Semi-Skilled</u>		9	4	5
6-X2.6	Processing Equipment Tending	4	2	2
6-X2.67	Food Processing Equipment Tending	1	1	
6-X4.6	Processing	2	1	1
6-X4.67	Processing, Foods and Related	2		2
<u>Inspecting Semi-Skilled</u>		32	11	21
6-X2.3	Inspecting and Testing	26	9	17
6-X2.38	Inspecting and Testing	3	1	2
6-X2.381	Simple Visual Inspecting	3	1	22



---

TABULATION NO. 1 - HUMBOLDT COUNTY APPLICANTS' OCCUPATIONAL POTENTIAL FOR MATERIAL WORKING

---

PAPER WORKING	TOTAL	MEN	WOMEN
<u>Managerial</u>	18	18	
0-X8.4    Managerial Work, Industrial	13	13	
0-X4.41   Managerial Work, Manufacturing	5	5	
<u>Machining Skilled</u>	173	168	5
4-X2.4    Complex Machine Operating (n.e.c.)*	173	168	5
<u>Machining Semi-Skilled</u>	8	3	5
6-X4.4    Machine Operating, Manipulative	8	3	5
<u>Bench Work Skilled</u>	352	50	302
4-X6.3    Bench Crafts	352	50	302
<u>Bench Work Semi-Skilled</u>	32	8	24
6-X4.3    Bench Work, Assembling and Related	32	8	24
<u>Processing Semi-Skilled</u>	4	1	3
6-X4.6    Processing	4	1	3
<u>Inspecting Semi-Skilled</u>	35	12	23
6-X2.3    Inspecting and Testing	29	10	19
6-X2.38   Inspecting and Testing	3	1	2
6-X2.381   Simple Visual Inspecting	3	1	2
N.E.C.* - Not Elsewhere Classified			



---

TABULATION NO. 1 - HUMBOLDT COUNTY APPLICANTS' OCCUPATIONAL POTENTIAL FOR MATERIAL WORKING

---

ELECTRICAL WORKING	TOTAL	MEN	WOMEN
<u>Professional</u>	1	1	1
0-X7.48 Electrical Engineering	1		1
<u>Managerial</u>	11	9	2
0-X8.41 Managerial Work, Manufacturing	5	5	
0-X8.49 Managerial Work, Transportation and Misc. Services	6	4	2
<u>Repairing</u>	84	84	
4-X6.1 Electrical Repairing	42	42	
4-X6.18 Electrical Repairing	33	33	
4-X6.181 Electrical Wiring	4	4	
4-X6.183 Electrical Equipment Repairing	3	3	
4-X6.185 Radio Repairing	2	2	
<u>Bench Work</u>	387	49	338
4-X6.3 Bench Crafts	362	41	321
4-X6.30 Bench Work, Assorted Materials	2	1	1
6-X4.3 Bench Work, Assembling and Related	22	7	15
6-X4.308 Electrical Unit Assembling	1		1
<u>Machine Tending</u>	52	30	22
6-X2.4 Machine Tending (n.e.c.)*	51	29	22
6-X2.40 Machine Tending, Assorted Materials	1	1	
N.E.C.* - Not Elsewhere Classified			



TABULATION NO. 2 - HUMBOLDT COUNTY SUPPLEMENTAL INFORMATION

June, 1965



TABULATION NO. 2 - HUMBOLDT COUNTY SUPPLEMENTAL INFORMATION

Availability of Applicants by Sex, Marital Status and Homeowner

Sex and Marital Status	Distance Applicants would travel for Employment			
	25 Miles Total Homeowner		50 Miles Total Homeowner	
TOTAL				
Married	590	337	20	8
Single	345	7	80	1
Widowed	14	11	2	2
Divorced	12	5	2	1
WOMEN				
Married	362	219	5	2
Single	182	3	34	1
Widowed	13	10	2	2
Divorced	11	4	2	1



TABULATION NO. 2 - HUMBOLDT COUNTY SUPPLEMENTAL INFORMATION

Work Shifts Desired			
Total	Any Shift	Day	Night
Employed	86	279	7
Women	22	85	2
Unemployed	134	544	15
Women	73	416	13

Hourly Wage on Last Job				
	\$1.25 (or Below)	\$1.50	\$2.00	Over \$2.00
Total Employed	82	136	56	98
Women	63	32	5	9
Total Unemployed	582	69	18	24
Women	423	47	12	20



TABULATION NO. 2 - HUMBOLDT COUNTY SUPPLEMENTAL INFORMATION

Years of School Completed by Applicants

	Total	Men	Women
8th Grade and Under	46	29	17
9 and 10	48	24	24
11 and 12	845	362	483
Over 12	126	39	83
All Applicants Total	1,065	454	611



TABULATION NO. 3 - PRIMARY OCCUPATIONS OF HUMBOLDT COUNTY APPLICANTS BY AGE AND SEX

June, 1965



### Explanation of Tabulation 3

In coding the primary occupations of Humboldt County residents, the mobile team of the Iowa State Employment Service used Part I of the Dictionary of Occupational Titles (DOT). Developed by the United States Employment Service, the DOT is considered the most comprehensive source of occupational information available. Its classification system arranges jobs in groups having common characteristics such as the type of work performed and the level of skills. Through this system, applicants with similar or related skills are grouped together.

Applicants who are fully qualified to perform in specific occupations can be classified by using Part I.

The summary tables show the totals for each of the eight major occupational groups and for entry workers.

Detailed breakdowns for each major occupational group and new entry applicants are given in the following tabulations.

Entry applicants are individuals for whom a primary occupational code could not be assigned because they had insufficient or no work experience.



TABULATION NO. 3 - PRIMARY OCCUPATIONS OF HUMBOLDT COUNTY RESIDENTS BY AGE AND SEX

PRIMARY OCCUPATIONS	T O T A L	M E N	By Age Group						W O M E N	By Age Group					
			14-24	25-34	35-44	45-54	55-64	65 & Over		14-24	25-34	35-44	45-54	55-64	65 & Over
All Applicants	1065	454	231	94	86	34	9	0	611	269	161	135	40	5	1
Professional & Managerial	69	30	2	15	9	3	1	0	39	4	20	11	4	0	0
Clerical & Sales	143	27	4	14	4	4	1	0	116	36	40	27	11	1	1
Service	48	4	2	1	0	0	1	0	44	13	10	18	2	1	0
Agricultural, Fishery, Forestry & kindred	102	99	18	26	42	11	2	0	3	0	1	1	1	0	0
Skilled	68	59	15	14	20	9	1	0	9	0	3	2	3	1	0
Semi-Skilled	56	46	14	18	9	5	0	0	10	3	2	4	1	0	0
Unskilled	10	9	4	3	0	1	1	0	1	0	0	1	0	0	0
Entry Applicants	569	180	172	3	2	1	2	0	389	213	85	71	18	2	0
Professional, Technical & Managerial	13	4	4	0	0	0	0	0	9	1	3	3	2	0	0
Clerical & Sales	361	60	53	3	2	1	1	0	301	176	65	51	9	0	0
Service	57	3	3	0	0	0	0	0	54	33	9	7	3	2	0
Agricultural, Marine & Forestry	24	23	23	0	0	0	0	0	1	0	1	0	0	0	0
Mechanical	107	85	84	0	0	0	1	0	22	3	6	9	4	0	0
Manual	7	5	5	0	0	0	0	0	2	0	1	1	0	0	0



TABULATION NO. 3 - PRIMARY OCCUPATIONS OF HUMBOLDT COUNTY RESIDENTS BY AGE AND SEX

PROFESSIONAL & MANAGERIAL OCCUPATIONS	T O T A L	M E N	By Age Group						W O M E N	By Age Group					
			14-24	25-34	35-44	45-54	55-64	65 & Over		14-24	25-34	35-44	45-54	55-64	65 & Over
11 Applicants	1065	454	231	94	86	34	9	0	611	269	161	135	40	5	1
PROFESSIONAL & MANAGERIAL	69	30	2	15	9	3	1	0	39	4	20	11	4	0	0
Accounting, Cost	1	1			1										
Accounting, Public	1	1		1											
Industrial Engineer	1	1		1											
Librarian	2								2	1			1		
Musician, Instrumental	1								1				1		
Teacher, Music	3								3		2		1		
Teacher, Grade or Grammar School	18	1			1				17	1	12	4			
Teacher, High School	4								4	1	1	2			
Nurse, Head	2								2		1	1			
Nurse, Office	1								1		1				
Nurse, Staff	1								1			1			
Nurse, Special	3								3		1	2			
Nurse, Public Health	1								1		1				
Radiation Technician	1								1		1				
Nurse, License Practical	1								1				1		
Instructor, Physical	1								1	1					
Dispatcher, Radio	1								1			1			
Radio Announcer	1	1	1												
Manager, Hotel	1	1				1									
Manager, Restaurant or Coffee Shop	1	1		1											
Manager, Retail Automotive	1	1			1										
Manager, Retail Automotive Service	7	7		5	1	1									
Manager, Retail Food	1	1			1										
Manager, Retail Lumber & Building Supplies	1	1	1												
Purchasing Agent (any ind.)	1	1			1										
Buyer, Grain I	1	1		1											
Broker	3	3		2	1										
Manager, Industrial Organization (any ind.)	3	3		2		1									



TABULATION NO. 3 - PRIMARY OCCUPATIONS OF HUMBOLDT COUNTY RESIDENTS BY AGE AND SEX

PROFESSIONAL & MANAGERIAL OCCUPATIONS	T O T A L	M E N	By Age Group						W O M E N	By Age Group					
			14-24	25-34	35-44	45-54	55-64	65 & Over		14-24	25-34	35-44	45-54	55-64	65 Over
Manager, Service	1	1			1										
Manager, Parts	1	1		1											
Contractor (const.)	2	2		1	1										
Manager, Bulk Plant	1	1					1								



TABULATION NO. 3 - PRIMARY OCCUPATIONS OF HUMBOLDT COUNTY RESIDENTS BY AGE AND SEX

CLERICAL & SALES OCCUPATIONS	T O T A L	M E N	By Age Group						W O M E N	By Age Group					
			14-24	25-34	35-44	45-54	55-64	65 & Over		14-24	25-34	35-44	45-54	55-64	65 & Over
All Applicants	1065	454	231	94	86	34	9	0	611	269	161	135	40	5	1
CLERICAL & SALES	1143	27	4	14	4	4	1	0	116	36	40	27	11	1	1
Bookkeeper (clerical) II	7								7		1	5	1		
Bookkeeper (clerical) III	2	1		1					1		1				
Posting Clerk (clerical)	1								1	1					
Cashier (clerical) II	5								5	2		2	1		
Bookkeeping Machine Operator II	3	1	1						2	1	1				
Bookkeeping Machine Operator III	1								1		1				
Grocery Checker	7								7	4	1		1	1	
Clerk, General Office	19	1		1					18	6	5	6	1		
Teller, (banking)	2								2	1		1			
Loan-Approval Agent	2	2		2											
File Clerk I (clerical)	1								1	1					
File Clerk II (clerical)	2								2	1					1
Mail Clerk (clerical)	1								1		1				
Information Clerk (clerical)	1								1	1					
Receptionist I (clerical)	2	1				1			1		1				
Calculating-Machine Operator	3								3		1	1	1		
Tabulating Machine Operator	1								1		1				
Pay-roll Clerk	1								1		1				
Timekeeper (clerical)	1	1	1												
Physician's Assistant	2								2	1		1			
Secretary (clerical)	10								10	3	6		1		
stenographer (clerical)	3								3	1	2				
Typist (clerical)	9								9	4	3	2			
Clerk-typist (clerical)	4								4	1	3				
Stock Clerk (clerical)	1	1		1											
Telephone Operator I	1								1		1				
Telephone Operator II	16								16	5	9	2			
Meigher (clerical)	1	1				1									
Salesman, House-to-House	5								5	1	1	1	2		
CLERICAL & SALES OCCUPATIONS															



TABULATION NO. 3 - PRIMARY OCCUPATIONS OF HUMBOLDT COUNTY RESIDENTS BY AGE AND SEX

CLERICAL & SALES OCCUPATIONS	T O T A L	M E N	By Age Group						W O M E N	By Age Group					
			14-24	25-34	35-44	45-54	55-64	65 & Over		14-24	25-34	35-44	45-54	55-64	65 & Over
Salesman, Insurance	5	5		4	1										
Sales Clerk	9								9	1		6	2		
Salesperson, Shoes	1								1	1					
Salesperson, Automobile Accessories	1	1		1											
Salesperson, Automobile Parts	2	2	2												
Salesperson, General	1								1				1		
Salesman, General (ret.tr.)	1	1		1											
Salesman, Motor Vehicle & Supplies	1	1				1									
Salesman, Foodstuffs	4	4		3	1										
Salesman, Building & Construction	1	1			1										
Salesperson, Farm & Garden Equipment & Supplies	3	3				2	1								



TABULATION NO. 3 - PRIMARY OCCUPATIONS OF HUMBOLDT COUNTY RESIDENTS BY AGE AND SEX

SERVICE OCCUPATIONS	T O T A L	M E N	By Age Group						W O M E N	By Age Group					
			14-24	25-34	35-44	45-54	55-64	65 & Over		14-24	25-34	35-44	45-54	55-64	65 & Over
All Applicants	1065	454	231	94	86	34	9	0	611	269	161	135	40	5	1
SERVICE	48	4	2	1	0	0	1	0	44	13	10	18	2	1	0
Day Worker (dom. ser.)	1								1			1			
Housekeeper, Working	1								1			1			
Cook Helper (dom. ser.)	1								1			1			
Maid, General	2								2		1		1		
Nursemaid (dom. ser.)	1								1	1					
Bartender I (hotel & rest.)	1								1					1	
Cook, Fry (hotel & rest.)	1	1	1												
Cook, (hotel & rest.)	3								3		1	2			
Waitress (hotel & rest.)	24								24	9	6	9			
Counterman, Cafeteria	1								1			1			
Kitchen Helper (hotel & rest.)	1								1			1			
Barber (per. ser.)	1	1	1												
Beauty Operator (per. ser.)	4								4	2	1	1			
Nurse, Practical (med. ser.)	1								1		1				
Nurse Aide (med.ser.)	2								2	1			1		
Charwomen (any ind.)	1								1			1			
Janitor (any ind.) I	2	2		1				1							



TABULATION NO. 3 - PRIMARY OCCUPATIONS OF HUMBOLDT COUNTY RESIDENTS BY AGE AND SEX

AGRICULTURAL, FISHERY, FORESTRY & KINDRED	T O T A L	M E N	By Age Group						W O M E N	By Age Group					
			14-24	25-34	35-44	45-54	55-64	65 & Over		14-24	25-34	35-44	45-54	55-64	65 Over
All Applicants	1065	454	231	94	86	34	9	0	611	269	161	135	40	5	
AGRICULTURAL, FISHERY, FORESTRY & KINDRED	102	99	18	26	42	11	2	0	3	0	1	1	1	0	
Farmer, Cash Grain	1	1			1										
Dairyman (agric.) II	2	2			1	1									
Farmer, General	74	74	7	21	35	9	2								
Farmer, Tenant	3	3	3												
Laborer, Seed Corn	3								3		1	1	1		
Farm Hand, General	14	14	5	4	5										
Farm Hand, Livestock	1	1	1												
Nurseryman (agric. & hortic. ser.) II	1	1		1											
Laborer, Hatchery	2	2	2												
Field Supervisor, Seed Production	1	1				1									

AGRICULTURAL, FISHERY  
FORESTRY & KINDRED



TABULATION NO. 3 - PRIMARY OCCUPATIONS OF HUMBOLDT COUNTY RESIDENTS BY AGE AND SEX

SKILLED OCCUPATIONS	T O T A L	M E N	By Age Group						W O M E N	By Age Group					
			14-24	25-34	35-44	45-54	55-64	65 & Over		14-24	25-34	35-44	45-54	55-64	65 & Over
All Applicants	1065	454	231	94	86	34	9	0	611	269	161	135	40	5	1
SKILLED	68	59	15	14	20	9	1	0	9	0	3	2	3	1	0
Baker (bake prod.)	1								1				1		
Milk-House Man I	1	1			1										
Tailor II	3								3		2	1			
Furniture Repairman (any ind.)	1	1			1										
Compositor (print & pub.) I	1	1	1												
Chamberman (chem; fertilizer)	1	1		1											
Machinest (mach. shop)	2	2		1		1									
Tool and Die Maker (mach. shop)	1	1			1										
Turret-Lathe Operator (mach. shop)	1	1	1												
Inspector (mach. shop)	1	1					1								
Structural-Steel Worker	1	1			1										
Welder, Arc (any ind.)	4	4	2	2											
Welder, Combination (any ind.)	4	4	1		1	2									
Electrician (any ind.)	1	1		1											
Electrician, Powerhouse	1	1			1										
Finisher (furn.; plan. mill)	1								1		1				
Painter, Furniture	1	1				1									
Carpenter (const.)	3	3	1		1	1									
Carpenter, Finish (const.)	3	3	1		1	1									
Cement Finisher (const.)	1	1			1										
Painter (const.)	1	1	1												
Plumber (const.)	1	1			1										
Trouble Man II (light, heat & power)	1	1			1										
Dry Cleaners	1								1					1	
Butcher, Meat (hotel & rest.)	1	1	1												
Stationary Engineer (any ind.)	3	3		1	1	1									
Power-Shovel Operator (any ind.)	1								1				1		
Dragline Operator (any ind.)	1	1		1											
Substation Inspector	1	1			1										
Automobile Mechanic	4	4	1	1	2										

SKILLED OCCUPATIONS



TABULATION NO. 3 - PRIMARY OCCUPATIONS OF HUMBOLDT COUNTY RESIDENTS BY AGE AND SEX

SKILLED OCCUPATIONS	T O T A L	M E N	By Age Group						W O M E N	By Age Group					
			14-24	25-34	35-44	45-54	55-64	65 & Over		14-24	25-34	35-44	45-54	55-64	65 & Over
Tractor Mechanic	2	2				2									
Automobile-Body Repairman, Metal	2	2	1	1											
Truck-Body Builder	1	1		1											
Furnace Installer & Repairman	1	1	1												
Electrical-Appliance Serviceman	2	2		1	1										
Transcribing-Machine Repairman	1	1	1												
Maintenance Man, Building	2	2	1		1										
Maintenance Man, Factory or Mill	3	3	1	1	1										
Developer (any ind.)	1								1				1		
Foreman (can. & preserve)	1								1			1			
Highway Foreman (const.)	1	1		1											
Foreman (clean, dye & press.)	2	2			2										
Foreman (agric. & hortic. ser.)	1	1		1											

O.P.P. LIBRARY COPY



TABULATION NO. 3 - PRIMARY OCCUPATIONS OF HUMBOLDT COUNTY RESIDENTS BY AGE AND SEX

SEMI-SKILLED OCCUPATIONS	T O T A L	M E N	By Age Group						W O M E N	By Age Group					
			14-24	25-34	35-44	45-54	55-64	65 & Over		14-24	25-34	35-44	45-54	55-64	65 Over
All Applicants	1065	454	231	94	86	34	9	0	611	269	161	135	40	5	1
SEMI-SKILLED OCCUPATIONS	56	46	14	18	9	5	0	0	10	3	2	4	1	0	
Baker Helper (bake prod.) II	1								1			1			
Relish Maker (can. & perserv.)	1								1			1			
Batch Mixer (gain & feed mill)	1	1			1										
Drier Attendant (corn product)	1	1	1												
Sewing Machine Operator	1								1			1			
Gang-Ripsaw Operator	1	1		1											
Furniture Assembler	3	3	2		1										
Batch Weigher (fertilizer)	1	1			1										
Welder, Spot (any ind.)	1	1	1												
Cabinet Mounter (radio mfg.)	5								5	3	2				
Crusher Man (quarry)	1	1		1											
Bulldozer Operator (const.)	1	1		1											
Plumber Helper (const.)	1	1		1											
Routeman (any ind.)	5	5	1	4											
Trailer-Truck Driver (any ind.)	3	3	1	2											
Truck Driver, Heavy	11	11	2	2	5	2									
Truck Driver, Light	1	1	1												
Tractor Operator (any ind.)	3	3		2	1										
Automotive Service-Station-Attendant	6	5	4			1			1				1		
Egg Candler (any ind.)	1								1			1			
Farm-Machinery-Set-Up-Man (whole. tr.)	2	2		1		1									
Machine Adjuster (any ind.) II	2	2	1	1											
Electric-Truck Operator	2	2		2											
Gasoline-Truck Operator	1	1				1									



TABULATION NO. 3 - PRIMARY OCCUPATIONS OF HUMBOLDT COUNTY RESIDENTS BY AGE AND SEX

UNSKILLED OCCUPATIONS	T O T A L	M E N	By Age Group						W O M E N	By Age Group					
			14-24	25-34	35-44	45-54	55-64	65 & Over		14-24	25-34	35-44	45-54	55-64	65 & Over
All Applicants	1065	454	231	94	86	34	9	0	611	269	161	135	40	5	
UNSKILLED	10	9	4	3	0	1	1	0	1	0	0	1	0	0	
Laborer (grain & feed mill)	3	3	2	1											
Laborer (plastic mat.)	1	1	1												
Laborer (construction)	2	2				1	1								
Laborer (whole. tr.)	1	1		1											
Laborer, Filling (any ind.)	1	1		1											
Laborer, Packing (any ind.)	1								1			1			
Laborer, Loading & Unloading (any ind.)	1	1	1												



TABULATION NO. 3 - PRIMARY OCCUPATIONS OF HUMBOLDT COUNTY RESIDENTS BY AGE AND SEX

Entry Applicants	T O T A L	M E N	By Age Group						W O M E N	By Age Group					
			14-24	25-34	35-44	45-54	55-64	65 & Over		14-24	25-34	35-44	45-54	55-64	65 & Over
PROFESSIONAL, TECHNICAL & MANAGERIAL															
All Entry Applicants	569	180	172	3	2	1	2	0	389	213	85	71	18	2	0
PROFESSIONAL, TECHNICAL & MANAGERIAL	13	4	4	0	0	0	0	0	9	1	3	3	2	0	
Artistic Arranging	1								1				1		
Copy Writing & Journalism	2	1	1						1	1					
Instructive Service Work	3								3		3				
General Education	2								2	1		1			
Social Welfare Work	1								1	1					
Laboratory Science Work	1	1	1												
Nursing & Medical Work	1	1	1												
Business Relations Work	1	1	1												
Managerial Work	1								1	1					
All Entry Applicants	569	180	172	3	2	1	2	0	389	213	85	71	18	2	0
CLERICAL & SALES	361	60	53	3	2	1	1	0	301	176	65	51	9	0	
Computing Work	2								2		1	1			
General Recording Work	58	17	15	1	1				41	17	13	8	3		
Typing (n.e.c.)*	121	5	4			1			116	73	26	16	1		
Stenographic Work	37								37	34	2	1			
Equipment & Material Checking	53	25	23		1		1		28	14	5	7	2		
Routine Recording Work	5	1	1						4	2	1	1			
Clerical Machine Operating (n.e.c.)*	1								1	1					
General Public Contact Work	42	5	3	2					31	17	12	7	1		
Selling	6								6	2	1	2	1		
Customer Service Work	36	7	7						29	16	4	8	1		

N.E.C.\* - Not Elsewhere Classified

ENTRY APPLICANTS

PROFESSIONAL, TECHNICAL & MANAGERIAL

CLERICAL & SALES OCCUPATIONS



TABULATION NO. 3 - PRIMARY OCCUPATIONS OF HUMBOLDT COUNTY RESIDENTS BY AGE AND SEX

ENTRY APPLICANTS SERVICE	T O T A L	M E N	By Age Group						W O M E N	By Age Group					
			14-24	25-34	35-44	45-54	55-64	65 & Over		14-24	25-34	35-44	45-54	55-64	65 & Over
All Entry Applicants	569	180	172	3	2	1	2	0	389	213	85	71	18	2	0
SERVICE	57	3	3	0	0	0	0	0	54	33	9	7	3	2	0
Quantity Cooking	6	2	2						4		1	1		2	
Child Care	5								5	5					
Food Serving & Related	26								26	19	4	2	1		
Adult Care	14								14	7	2	4	1		
Misc. Personal Service Work	6	1	1						5	2	2		1		
All Entry Applicants	569	180	172	3	2	1	2	0	389	213	85	71	18	2	0
AGRICULTURAL, MARINE & FORESTRY	24	23	23	0	0	0	0	0	1	0	1	0	0	0	0
General Farming	2	2	2												
General Farming	21	21	21												
Gardening	1								1		1				
All Entry Applicants	569	180	172	3	2	1	2	0	389	213	85	71	18	2	0
MECHANICAL	107	85	84	0	0	0	1	0	22	3	6	9	4	0	0
Machining	1	1	1												
Metal Machining	2	2	2												
Mechanical Repairing	16	16	16												
Mechanical Repairing	9	9	9												
Complex Machine Operating (n.e.c.)*	7	7	7												
Hauling, Hoisting & Drilling Machine Operator	6	6	6												
Hauling Machine Operating	5	5	5												
Electric Repairing	3	3	3												
Electrical Equipment Repairing	1	1	1												
Structural Crafts	8	8	8												

N.E.C.\* - Not Elsewhere Classified

ENTRY APPLICANTS  
SERVICE - AGRICULTURAL, MARINE & FORESTRY - MECHANICAL



TABULATION NO. 3 - PRIMARY OCCUPATIONS OF HUMBOLDT COUNTY RESIDENTS BY AND AND SEX

ENTRY APPLICANTS MECHANICAL	T O T A L	M E N	By Age Group						W O M E N	By Age Group					
			14-24	25-34	35-44	45-54	55-64	65 & Over		14-24	25-34	35-44	45-54	55-64	65 & Over
structural Work, Assorted Material	1	1	1												
structural Work, Wood	9	9	9												
structural Work, Stone or Glass	1	1	1												
bricklaying	1	1					1								
structural Work, Plastic & Paint	4	3	3						1				1		
welding and Related	10	10	10												
mechanical Crafts	1								1	1					
mechanical Work, Assorted Material	1								1			1			
mechanical Work, Wood	1	1	1												
armament & Cloth Working	14								14	2	4	6	2		
mechanical Work, Paper Products	1	1	1												
processing Food & Related	5								5		2	2	1		
All Entry Applicants	569	180	172	3	2	1	2	0	389	213	85	71	18	2	0
MANUAL	7	5	5	0	0	0	0	0	2	0	1	1	0	0	0
Machine Tending (n.e.c.)*	1	1	1												
hauling, Hoisting & Drilling Machine Operating	2	2	2												
mechanical Work, Metal	1								1		1				
mechanical Work, Plastic Material & Paint	1	1	1												
processing, Assorted Material	1								1			1			
elemental Work, Light	1	1	1												

N.E.C.\* - Not Elsewhere Classified

ENTRY APPLICANTS  
MECHANICAL - MANUAL



TABULATION NO. 4 - OCCUPATIONS FOR WHICH APPLICANTS SHOW POTENTIAL, BY SEX

June, 1965



#### Explanation of Tabulation No. 4

A total picture of all the applicant's skills and abilities are shown according to occupational potential in Tabulation No. 4. Through intensive interviewing, primary occupational codes are converted into potential codes. By using the General Aptitude Test Battery additional potential codes are found for applicants with primary occupational codes and for entry applicants with insufficient or no work experience.

Since each applicant may have the potential to perform one or more jobs, an applicant is listed for each job for which he is potentially qualified. As a result the total number of people potentially qualified for each field of work is shown and not the actual number of applicants.

Applicants are classified according to Part IV of the Dictionary of Occupational Titles (DOT), a standard reference for listing applicants who show potential for certain fields of work but who lack fully qualifying experience or training.

Since applicants are in various stages of preparation for work, a classification system is set up to indicate the degree of preparation. The first digit in the code stands for one of the six major occupational fields. The second digit is always an X to show that it is a potential and not a primary code. A three and four-digit code classifies an applicant according to broad interests, aptitudes, leisure time activities and general training.

A five-digit code shows that the applicant has some preliminary training or work experience while a six-digit codes show that the applicant has advanced training or work experience although he still is not fully qualified.

The figures outside of the parenthesis show the total number of applicants who are in a particular classification. The figures in parenthesis show how many of the total are qualified at each level.



## SUMMARY OF

TABULATION NO. 4 - OCCUPATIONS FOR WHICH HUMBOLDT COUNTY APPLICANTS SHOW POTENTIAL, BY SEX

OCCUPATIONAL FIELD	TOTAL	MEN	WOMEN
0-X Professional, Technical & Managerial Work	707	300	407
0-X1 Artistic Work	55	12	43
0-X2 Musical Work	8	4	4
0-X3 Literary Work	12	3	9
0-X4 Entertainment Work	7	1	6
0-X6 Public Service Work	187	65	122
0-X7 Technical Work	258	112	146
0-X8 Managerial Work	180	103	77
1-X Clerical & Sales Work	1,684	400	1,284
1-X1 Computing Work	17	1	16
1-X2 Recording Work	1,088	265	823
1-X4 General Clerical Work	59	5	54
1-X5 Public Contact Work	520	129	391
2-X Service	132	5	127
2-X1 Cooking	22	3	19
2-X3 Child Care	16	-	16
2-X5 Personal Service	94	2	92
3-X Agricultural, Marine & Forestry Work	53	49	4
3-X1 Farming	49	45	4
3-X8 Marine Work	1	1	
3-X9 Forestry Work	3	3	
4-X Mechanical Work	1,480	965	515
4-X2 Machine Trades	484	465	19
4-X6 Crafts	996	500	496
6-X Manual Work	197	92	105
6-X2 Observational Work	126	59	67
6-X4 Manipulative Work	64	27	37
6-X6 Elemental Work	7	6	1



TABULATION NO. 4 - OCCUPATIONAL FIELDS FOR WHICH HUMBOLDT COUNTY APPLICANTS SHOW POTENTIAL, BY SEX

O-X PROFESSIONAL, TECHNICAL AND MANAGERIAL	TOTAL		MEN		WOMEN	
O-X1. Artistic Work	55	(1)	12		43	(1)
O-X1.2 Artistic Drawing and Related	45	(45)	12	(12)	33	(33)
O-X1.5 Artistic Arrnaging	9	(9)			9	(9)
O-X2. Musical Work	8		4		4	
O-X2.5 Musical Work, Vocal	1	(1)	1	(1)		
O-X2.6 Musical Work, Instrumental	7	(7)	3	(3)	4	(4)
O-X3. Literary Work	12		3		9	
O-X3.1 Creative Writing and Translating	8	(8)	1	(1)	7	(7)
O-X3.5 Copy Writing and Journalism	4	(4)	2	(2)	2	(2)
O-X4. Entertainment Work	7		1		6	
O-X4.2 Entertainment Work, Oral	7	(7)	1	(1)	6	(6)
O-X6. Public Service Work	187		65		122	
O-X6.0 Instructive Service Work	140	(123)	40	(36)	100	(87)
O-X6.00 General Education		12 (12)		1 (1)		11 (11)
O-X6.01 Commercial Education		1 (1)		1 (1)		
O-X6.06 Physical Education		4 (4)		2 (2)		2 (2)
O-X6.1 Social Service Work	21	(19)	7	(6)	14	(13)
O-X6.12 Social Welfare Work		1 (1)				1 (1)
O-X6.14 Guidance and Advisory Work		1 (1)		1 (1)		
O-X6.2 Protective Service Work	26	(23)	18	(15)	8	(8)
O-X6.25 Protective Service Work		3 (3)		3 (3)		
O-X7. Technical Work	258		112		146	
O-X7.0 Laboratory Science Work	137	(124)	35	(33)	102	(91)
O-X7.02 Nursing and Medical Work		11 (11)		1 (1)		10 (10)
O-X7.03 Biochemical Work (n.e.c.)*		2 (2)		1 (1)		1 (1)

\*N.E.C. - Not Elsewhere Classified  
PROFESSIONAL, TECHNICAL & MANAGERIAL



TABULATION NO. 4 - OCCUPATIONAL FIELDS FOR WHICH HUMBOLDT COUNTY APPLICANTS SHOW POTENTIAL, BY SEX

O-X PROFESSIONAL, TECHNICAL AND MANAGERIAL	TOTAL		MEN		WOMEN	
O-X7.1 Business Relations Work	93	(86)	51	(44)	42	(42)
O-X7.11 Accounting		3 (3)		3 (3)		
O-X7.15 Purchase and Sales Work		4 (4)		4 (4)		
O-X7.3 Geographical Science Work	1		1			
O-X7.30 Geographical Science Work		1 (1)		1 (1)		
O-X7.4 Engineering and Related	22	(19)	20	(18)	2	(1)
O-X7.41 Industrial Engineering		1 (1)		1 (1)		
O-X7.48 Electrical Engineering		1 (1)			1	(1)
O-X7.49 Technical Control Work		1 (1)		1 (1)		
O-X7.7 Drafting and Related	5	(5)	5	(5)		
O-X8. Managerial Work	180	(1)	103		77	(1)
O-X8.1 Managerial Work, CAFS*	133	(119)	61	(49)	72	(70)
O-X8.10 Managerial Work, CAFS*		14 (14)		12 (12)	2	(2)
O-X8.2 Managerial Work, Personal Service	4	(3)	2	(2)	2	(1)
O-X8.25 Managerial Work, Personal Service		1 (1)			1	(1)
O-X8.3 Managerial Work, Geographical	7	(6)	7	(6)		
O-X8.31 Farming Supervision		1 (1)		1 (1)		
O-X8.4 Managerial Work, Industrial	35	(19)	33	(19)	2	
O-X8.41 Managerial Work, Manufacturing		5 (5)		5 (5)		
O-X8.42 Managerial Work, Construction and Mining		4 (4)		4 (4)		
O-X8.46 Managerial Work, Processing		1 (1)		1 (1)		
O-X8.49 Managerial Work, Trans. and Misc. Services		6 (6)		4 (4)	2	(2)

\* CAFS - Clerical, Administrative, Fiscal, Sales

PROFESSIONAL, TECHNICAL & MANAGERIAL



TABULATION NO. 4 - OCCUPATIONAL FIELDS FOR WHICH HUMBOLDT COUNTY APPLICANTS SHOW POTENTIAL, BY SEX

1-X. CLERICAL AND SALES	TOTAL		MEN		WOMEN	
1-X1. Computing Work	17		1		16	
1-X1.1 Computing Work	17	(17)	1	(1)	16	(16)
1-X2. Recording Work	1088		265		823	
1-X2.0 General Recording Work	232	(232)	54	(54)	178	(178)
1-X2.2 Typing (n.e.c.)*	331	(331)	23	(23)	308	(308)
1-X2.3 Stenographic Work	94	(94)	1	(1)	93	(93)
1-X2.8 Equipment and Material Checking	406	(406)	182	(182)	224	(224)
1-X2.9 Routine Recording Work	25	(25)	5	(5)	20	(20)
1-X4. General Clerical Work	59	(2)	5		54	(2)
1-X4.0 Classifying and Related Work	25	(25)	1	(1)	24	(24)
1-X4.4 Clerical Machine Operating (n.e.c.)*	26	(26)	4	(4)	22	(22)
1-X4.9 Routine Clerical Work, (n.e.c.)*	6	(6)			6	(6)
1-X5. Public Contact Work	520		129		391	
1-X5.0 General Public Contact Work	379	(379)	67	(67)	312	(312)
1-X5.5 Selling	56	(56)	39	(39)	17	(17)
1-X5.7 Customer Service Work	85	(85)	23	(23)	62	(62)

\* N.E.C. - Not Elsewhere Classified

CLERICAL AND SALES



TABULATION NO. 4 - OCCUPATIONAL FIELDS FOR WHICH HUMBOLDT COUNTY APPLICANTS SHOW POTENTIAL, BY SEX

2-X. SERVICE		TOTAL	MEN		WOMEN	
2-X1	Cooking	22	3		19	
	2-X1.1 Domestic Cooking	4	(4)		4	
	2-X1.2 Quantity Cooking	18	(18)		15	
2-X3	Child Care	16			16	
	2-X3.3 Child Care	16	(16)		16	
2-X5	Personal Service	94	2		92	
	2-X5.2 Food Serving and Related	42	(42)		42	
	2-X5.6 Adult Care	38	(38)		37	
	2-X5.9 Misc. Personal Service Work	14	(14)		13	



TABULATION NO. 4 - OCCUPATIONAL FIELDS FOR WHICH HUMBOLDT COUNTY APPLICANTS SHOW POTENTIAL, BY SEX

3-X AGRICULTURAL, MARINE & FORESTRY WORK		TOTAL		MEN		WOMEN	
3-X1	Farming	49		45		4	
3-X1.0	General Farming	43	(4)	43	(4)		
	3-X1.00 General Farming	39	(39)	39	(39)		
3-X1.1	Animal Care	2		2			
	3-X1.17 Poultry Farming & Related	1	(1)	1	(1)		
	3-X1.19 Misc. Animal Care	1	(1)	1	(1)		
3-X1.2	Crop Farming	4				4	
	3-X1.28 Gardening, Landscape, Greenhouse, Flower or Nursery	4	(4)			4	(4)
3-X8	Marine Work	1		1			
	3-X8.6 Hunting and Trapping, Aquatic Animals	1	(1)	1	(1)		
3-X9	Forestry Work	3	(1)	3	(1)		
	3-X9.9 Forest Work	2	(2)	2	(2)		



TABULATION NO. 4 - OCCUPATION FIELDS FOR WHICH HUMBOLDT COUNTY APPLICANTS SHOW POTENTIAL, BY SEX

4-X. MECHANICAL		TOTAL		MEN		WOMEN	
4-X2	Machine Trades	484		465		19	
4-X2.0	Machining	28	(14)	28	(14)		
4-X2.01	Metal Machining	13	(8)	13	(8)		
	4-X2.010 All-Around Metal Machining		(2)		(2)		
	4-X2.011 Metal Lathe Work		(1)		(1)		
	4-X2.014 Metal Boring, Drilling		(2)		(2)		
	4-X2.02 Wood Machining	1	(1)	1	(1)		
4-X2.1	Mechanical Repairing	246	(114)	245	(114)	1	
4-X2.10	Mechanical Repairing	132	(107)	131	(106)	1	(1)
	4-X2.100 All-Around Mechanical Repairing		(2)		(2)		
	4-X2.102 Engine and Pump Maintenance and Repairing		(2)		(2)		
	4-X2.103 Combustion Engine Repairing		(13)		(13)		
	4-X2.106 Office Machine Repairing		(1)		(1)		
	4-X2.107 Armament Repairing		(1)		(1)		
	4-X2.109 Misc. Mechanical Repairing		(6)		(6)		
4-X2.4	Complex Machine Operating (n.e.c.)*	210	(118)	192	(102)	18	(16)
4-X2.49	Hauling, Hoisting and Drilling Machine Operating	92	(29)	90	(29)	2	
	4-X2.492 Hauling Machine Operating		(60)		(59)		(1)
	4-X2.493 Hoisting Machine Operating		(3)		(2)		(1)
4-X6	Crafts	996		500		496	
4-X6.1	Electrical Repairing	87	(43)	87	(43)		

\*N.E.C. - Not Elsewhere Classified

MECHANICAL WORK



TABULATION NO. 4 - OCCUPATIONAL FIELDS FOR WHICH HUMBOLDT COUNTY APPLICANTS SHOW POTENTIAL, BY SEX

4-X MECHANICAL		TOTAL		MEN		WOMEN	
4-X6.18	Electrical Repairing	44	(35)	44	(35)		
	4-X6.181 Electrical Wiring		(4)		(4)		
	4-X6.183 Electrical Equip. Repairing		(3)		(3)		
	4-X6.185 Radio Repairing		(2)		(2)		
4-X6.2	Structural Crafts	368	(42)	339	(40)	29	(2)
	4-X6.20 Structural Work, Assorted Materials	8	(1)	8	(1)		
	4-X6.209 Misc. Structural Crafts		(7)		(7)		
	4-X6.21 Structural Work, Metal	10	(6)	10	(6)		
	4-X6.211 Heavy Metal Structural Work		(2)		(2)		
	4-X6.217 Plumbing and Related		(2)		(2)		
	4-X6.22 Structural Work, Wood	125	(116)	124	(115)	1	(1)
	4-X6.220 Wood Structural Work		(9)		(9)		
	4-X6.23 Structural Work, Stone or Glass	6	(3)	6	(3)		
	4-X6.232 Bricklaying		(1)		(1)		
	4-X6.233 Glass or Tile Setting		(2)		(2)		
	4-X6.24 Structural Work, Plastic Materials	65	(59)	39	(33)	26	(26)
	4-X6.244 Plastic Materials Spreading		(1)		(1)		
	4-X6.246 Structural Painting Brush or Spray		(5)		(5)		
	4-X6.28 Welding and Related	112	(85)	112	(85)		
	4-X6.280 Combination Welding		(18)		(18)		
	4-X6.281 Arc Welding		(9)		(9)		
4-X6.3	Bench Crafts	395	(24)	54	(11)	341	(13)

MECHANICAL WORK



TABULATION NO. 4 - OCCUPATIONAL FIELDS FOR WHICH HUMBOLT COUNTY APPLICANTS SHOW POTENTIAL, BY SEX

4-X. MECHANICAL		TOTAL	MEN	WOMEN
4-X6.30	Bench Work, Assorted Mat.	3 (2)	1 (1)	2 (1)
	4-X6.309 Misc. Bench Crafts	(1)		(1)
4-X6.31	Bench Work, Metal	3 (3)	3 (3)	
4-X6.32	Bench Work, Wood	50 (49)	23 (22)	27 (27)
	4-X6.320 All-Around Cabinet Model Making, Wood	(1)	(1)	
4-X6.34	Bench Work, Plastic Materials	1		1
	4-X6.346 Shop Painting Brush or Spray	(1)		(1)
4-X6.35	Bench Work, Fabric, Leather and Related	307 (10)	13 (4)	294 (6)
	4-X6.351 Fiber Working, Hand Weaving & Related	(15)		(15)
	4-X6.352 Garment & Cloth Working	(278)	(6)	(272)
	4-X6.353 Upholstering	(1)	(1)	
	4-X6.355 Leather Working	(3)	(2)	(1)
4-X6.37	Bench Work, Foods & Related	7 (4)	3 (2)	4 (2)
	4-X6.375 Bakery Bench Work	(2)		(2)
	4-X6.376 Meat Dressing	(1)	(1)	
4-X6.5	Graphic Art Work	32 (25)	10 (6)	22 (19)
	4-X6.56 Typesetting & Related	2 (1)	2 (1)	
	4-X6.568 Hand Composing	(1)	(1)	
4-X6.58	Photographic Work	5 (2)	2 (1)	3 (1)
	4-X6.588 Photographic Work	(3)	(1)	(2)
4-X6.6	Processing	114 (11)	10 (1)	104 (10)
	4-X6.60 Processing, Assorted Mat.	1 (1)	1 (1)	
	4-X6.65 Processing, Fabric, Leather and Related	2	1	1
	4-X6.651 Fabric & Leather Treating	100 ((2)	(1)	(1)
4-X6.67	Processing, Foods & Related	100 (77)	7 (3)	93 (74)
	4-X6.671 Mixing, Compounding & Cooking	(4)	(4)	
	4-X6.675 Baking	(19)		(19)

MECHANICAL WORK



TABULATION NO. 4 - OCCUPATIONAL FIELDS FOR WHICH HUMBOLDT COUNTY APPLICANTS SHOW POTENTIAL, BY SEX

6-X MANUAL		TOTAL		MEN		WOMEN	
6-X2	Observational Work	126		59		67	
6-X2.2	Structural Equipment Tending	6	(6)	6	(6)		
6-X2.3	Inspecting and Testing	39	(32)	12	(10)	27	(22)
6-X2.38	Inspecting and Testing	7	(3)		2 (1)	5	(2)
	6-X2.381 Simple Visual Inspecting		(4)		(1)		(3)
6-X2.4	Machine Tending, (n.e.c.)*	76	(43)	38	(5)	38	(38)
	6-X2.40 Machine Tending, Assorted Materials		2 (1)		2 (1)		
	6-X2.49 Hauling, Hoisting & Drilling Machine Operating		31 (12)		31 (12)		
	6-X2.492 Hauling Machine Operating		(18)		(18)		
	6-X2.493 Hoisting Machine Operating		(1)		(1)		
6-X2.6	Processing Equipment Tending	5	(3)	3	(1)	2	(2)
	6-X2.60 Non-Metal Processing Equip. Tending (n.e.c.)*		1		1		
	6-X2.604 Non-Metal Heat Drying		(1)		(1)		
	6-X2.67 Food Processing Equipment Tending		1 (1)		1 (1)		
6-X4.	Manipulative Work	64		27		37	
6-X4.2	Structural Work	13	(5)	12	(4)	1	(1)
	6-X4.21 Structural Work, Metal		6 (2)		6 (2)		
	6-X4.213 Simple Light Metal Structural Work		(4)		(4)		
	6-X4.22 Structural Work, Wood		1 (1)		1 (1)		
	6-X4.28 Welding & Riveting		1		1		
	6-X4.281 Welding & Related		(1)		(1)		
6-X4.3	Bench Work, Assembling & Related	36	(4)	10		26	(4)
	6-X4.30 Bench Work, Assorted Mat.		2 (1)			2	(1)

\* N.E.C. - Not Elsewhere Classified



TABULATION NO. 4 - OCCUPATIONAL FIELDS FOR WHICH HUMBOLDT COUNTY APPLICANTS SHOW POTENTIAL, BY SEX

6-X MANUAL		TOTAL		MEN		WOMEN	
	6-X4.308 Electrical Unit Assembling		(1)			(1)	(1)
	6-X4.31 Bench Work, Metal	1	(1)			1	(1)
	6-X4.32 Bench or Shop Work, Wood	4	(1)	4	(1)		
	6-X4.320 Wood Unit Assembling		(2)		(2)		
	6-X4.325 Wood Sanding, Hand or Power Tool		(1)		(1)		
	6-X4.34 Bench Work, Plastic Materials and Paint	5	(2)	5	(2)		
	6-X4.346 Simple Shop Painting		(3)		(3)		
	6-X4.35 Bench Work, Fabric, Leather & Related	19	(3)	1		18	(3)
	6-X4.351 Hand Sewing & Related		(3)		(1)		(2)
	6-X4.352 Machine Sewing		(13)				(13)
	6-X4.37 Bench Work, Foods & Related	1				1	
	6-X4.379 Misc. Food Handling and Related		(1)				(1)
	6-X4.4 Machine Operating, Manipulative	10	(8)	4	(2)	6	(6)
	6-X4.40 Machine Operating, Assorted Materials	1	(1)	1	(1)		
	6-X4.42 Woodworking Machine Operating	1		1			
	6-X4.429 Misc. Woodworking Machine Operating		(1)		(1)		
	6-X4.6 Processing	5	(2)	1	(1)	4	(4)
	6-X4.60 Processing, Assorted Materials	1	(1)			1	(1)
	6-X4.67 Processing, Foods & Related	2	(2)			2	(2)
6-X6. Elemental Work		7		6		1	
	6-X6.1 Elemental Work, Light	3	(2)	3	(2)		
	6-X6.10 Elemental Work, Light	1	(1)	1	(1)		
	6-X6.6 Elemental Work, Medium & Heavy	4		3		1	
	6-X6.62 Elemental Service Work	1	(1)			1	(1)
	6-X6.69 Misc. Physical Work	3	(3)	3	(3)		



Explanation of Tabulation No. 5

Each applicant is listed according to this highest potential. Unlike Tabulation No. 4, an applicant is listed only once.



TABULATION NO. 5 - HUMBOLDT COUNTY APPLICANTS BY THEIR HIGHEST OCCUPATIONAL POTENTIAL

OCCUPATIONAL FIELD	TOTAL	MEN	WOMEN
Total Applicants	1,065	454	611
0-X Professional, Technical & Managerial	131	69	62
1-X Clerical & Sales	636	174	462
2-X Service	60	3	57
3-X Agricultural, Marine, Forestry Work	24	23	1
4-X Mechanical Work	199	174	25
6-X Manual Work	15	11	4



TABULATION NO. 5 - HUMBOLDT COUNTY APPLICANTS BY THEIR HIGHEST OCCUPATIONAL POTENTIAL

OCCUPATIONAL FIELD		TOTAL	MEN	WOMEN
Total Applicants		1,065	454	611
O-X PROFESSIONAL, TECHNICAL & MANAGERIAL		131	69	62
O-X1.2	Artistic Drawing and Related	6	1	5
O-X1.5	Artistic Arranging	2		2
O-X2.5	Musical Work, Vocal	1	1	
O-X2.6	Musical Work, Instrumental	11	1	
O-X3.1	Creative Writing and Translating	1		1
O-X3.5	Copy Writing and Journalism	3	1	2
O-X4.2	Entertainment Work, Oral	1	1	
O-X6.0	Inspecting Service Work	9	2	7
O-X6.00	General Education	9	1	8
O-X6.01	Commercial Education	1	1	
O-X6.06	Physical Education	3	1	2
O-X6.1	Social Service Work	1	1	
O-X6.12	Social Welfare Work	1		1
O-X6.14	Guidance and Advisory Work	1	1	
O-X6.2	Protective Service Work	5	4	1
O-X6.25	Protective Service Work	3	3	
O-X7.0	Laboratory Science Work	9	2	7
O-X7.02	Nursing and Medical Work	8	1	7
O-X7.1	Business Relations Work	11	8	3
O-X7.11	Accounting	3	3	
O-X7.15	Purchase and Sales Work	4	4	
O-X7.30	Geographical Science Work	1	1	
O-X7.4	Engineering and Related	1	1	

PROFESSIONAL, TECHNICAL & MANAGERIAL



TABULATION NO. 5 - HUMBOLDT COUNTY APPLICANTS BY THEIR HIGHEST OCCUPATIONAL POTENTIAL

OCCUPATIONAL FIELD		TOTAL	MEN	WOMEN
3-7.0-X7.41	Industrial Engineering	1	1	
O-X7.49	Technical Control Work, (n.e.c.)*	1	1	
O-X8	Managerial Work	1		1
O-X8.1	Managerial Work, CAFS*	16	6	10
O-X8.10	Managerial Work, CAFS*	11	9	2
O-X8.25	Managerial Work, Personal Service	1		1
O-X8.31	Farming Supervision	1	1	
O-X8.4	Managerial Work, Industrial	2	2	
O-X8.41	Managerial Work, Manufacturing	2	2	
O-X8.42	Managerial Work, Construction and Mining	4	4	
O-X8.46	Managerial Work, Processing	1	1	
O-X8.49	Managerial Work, Transportation and Misc. Services	5	3	2

CAFS\* - Clerical, Administrative, Fiscal, Sales

N.E.C.\* - Not Elsewhere Classified



TABULATION NO. 5 - HUMBOLDT COUNTY APPLICANTS BY THEIR HIGHEST OCCUPATIONAL POTENTIAL

OCCUPATIONAL FIELD		TOTAL	MEN	WOMEN
Total Applicants		1,065	454	611
1-X CLERICAL & SALES		636	174	462
1-X1.1	Computing Work	9		9
1-X2.0	General Recording work	114	29	85
1-X2.2	Typing (n.e.c.)*	174	8	166
1-X2.3	Stenographic Work	45		45
1-X2.8	Equipment and Material Checking	169	104	65
1-X2.9	Routine Recording Work	11	4	7
1-X4.4	Clerical Machine Operating (n.e.c.)*	2		2
1-X4.9	Routine Clerical Work (n.e.c.)*	1		1
1-X5.0	General Public Contact Work	54	10	44
1-X5.5	Selling	16	10	6
1-X5.7	Customer Service Work	41	9	32

\*N.E.C. - Not Elsewhere Classified



TABULATION NO. 5 - HUMBOLDT COUNTY APPLICANTS BY THEIR HIGHEST OCCUPATIONAL POTENTIAL

OCCUPATIONAL FIELD	TOTAL	MEN	WOMEN
Total Applicants	1,065	454	611
2-X SERVICE	60	63	57
2-X1.2    Quantity Cooking	8	2	6
2-X3.3    Child Care	5		5
2-X5.2    Food Serving and Related	26		26
2-X5.6    Adult Care	15		15
2-X5.9    Misc. Personal Service Work	6	1	5
Total Applicants	1,065	454	611
3-X AGRICULTURAL, MARINE & FORESTRY WORK	24	23	1
3-X1.0    General Farming	2	2	
3-X1.00   General Farming	21	21	
3-X1.28   Gardening, Landscape, Greenhouse, Flower or Nursery	1		1



TABULATION NO. 5 - HUMBOLDT COUNTY APPLICANTS BY THEIR OCCUPATIONAL POTENTIAL

OCCUPATIONAL FIELD		TOTAL	MEN	WOMEN
Total Applicants		1,065	454	611
4-X MECHANICAL WORK		199	174	25
4-X2.0	Machining	1	1	
4-X2.01	Metal Machining	4	4	
4-X2.010	All-Around Metal Machining	1	1	
4-X2.011	Metal Lathe Work	1	1	
4-X2.02	Wood Machining	1	1	
4-X2.1	Mechanical Repairing	31	31	
4-X2.10	Mechanical Repairing	37	37	
4-X2.100	All-Around Mechanical Repairing	1	1	
4-X2.102	Engine and Pump Maintenance and Repairing	1	1	
4-X2.103	Combustion Engine Repairing	2	2	
4-X2.109	Misc. Mechanical Repairing	2	2	
4-X2.4	Complex Machine Operating (n.e.c.)*	9	9	
4-X2.49	Hauling, Hoisting and Drilling Machine Operating	12	12	
4-X2.492	Hauling Machine Operating	13	13	
4-X6.1	Electrical Repairing	2	2	
4-X6.18	Electrical Repairing	5	5	
4-X6.183	Electrical Equipment Repairing	1	1	
4-X6.2	Structural Crafts	8	8	
4-X6.20	Structural Work, Assorted Materials	1	1	
4-X6.209	Misc. Structural Crafts	5	5	
4-X6.22	Structural Work, Wood	14	14	
4-X6.220	Wood Structural Work, Carpentry	1	1	
4-X6.23	Structural Work, Stone or Glass	1	1	
4-X6.232	Bricklaying	1	1	

\*N.E.C. - Not Elsewhere Classified

MECHANICAL WORK



TABULATION NO. 5 - HUMBOLDT COUNTY APPLICANTS BY THEIR HIGHEST OCCUPATIONAL POTENTIAL

OCCUPATIONAL FIELD	TOTAL	MEN	WOMEN
4-X6.24 Structural Work, Plastic Materials	4	3	1
4-X6.28 Welding and Related	12	12	
4-X6.280 Combustion Welding	1	1	
4-X6.3 Bench Crafts	1		1
4-X6.30 Bench Work, Assorted Materials	1		1
4-X6.32 Bench Work, Wood	1	1	
4-X6.346 Shop Painting, Brush or Spray	1		1
4-X6.352 Garment and Cloth Working	15		15
4-X6.353 Upholstering	1	1	
4-X6.37 Bench Work, Foods and Related	1	1	
4-X6.67 Processing, Foods and Related	5		5
4-X6.675 Baking	1		1



TABULATION NO. 5 - HUMBOLDT COUNTY APPLICANTS BY THEIR HIGHEST OCCUPATIONAL POTENTIAL

OCCUPATIONAL FIELD	TOTAL	MEN	WOMEN
Total Applicants	1,065	454	611
6-X MANUAL	15	11	4
6-X2.381 Simple Visual Inspecting	1		1
6-X2.40 Machine Tending, Assorted Materials	1	1	
6-X2.49 Hauling, Hoisting, and Drilling Machine Operating	2	2	
6-X2.492 Hauling Machine Operating	4	4	
6-X2.493 Hoisting Machine Operating	1	1	
6-X4.308 Electrical Unit Assembling	1		1
6-X4.31 Bench Work, Metal	1		1
6-X4.34 Bench Work, Plastic Materials and Paint	1	1	
6-X4.60 Processing, Assorted Materials	1		1
6-X6.1 Elemental Work, Light	1	1	
6-X6.69 Misc. Physical Work	1	1	



MANPOWER RESOURCES

Chapter I - Summary Description of Humboldt County and Its Economy

Chapter II - Humboldt County's People

Chapter III - Humboldt County's Labor Force

O.P.P. LIBRARY COPY



## Chapter I - SUMMARY DESCRIPTION OF HUMBOLDT COUNTY AND ITS ECONOMY



## AREA DEFINATION AND LOCATION

Humboldt County is located in the third tier of counties south of the Minnesota State line in north-central Iowa. This county is bounded on the south by Webster County, on the east by Wright County, on the north by Kossuth County and on the west by Pocahontas County.

Rectangular in shape, Humboldt County extends 24 miles from east to west and 18 miles from north to south. It is divided into 14 civil townships, 12 of which coincide with the United States townships. The total land area is 432 square miles or 276,480 acres.

Dakota City, the county seat, is located in the southern part of the county, 20 miles north of Fort Dodge, Iowa, the nearest large city. Humboldt is located 104 miles northwest of Des Moines, the capital of Iowa.

U. S. Highway 169, a north-south route, passes through Humboldt County and connects with Algona and other points north and on into the Minneapolis-St. Paul, Minnesota area, and with Fort Dodge, and Des Moines to the south.

State Highway 3 passes through Humboldt County in an east-west direction and connects with Clarion, Hampton, and Waverly to the east and on into the Chicago, Illinois area. Pocahontas, Cherokee and Le Mars, and other points are located west of Humboldt County on No. 3.

The approximate air and road miles to these major metropolitan areas are:

	<u>Air Miles</u>	<u>Road Miles</u>
Chicago, Illinois	320	390
Des Moines, Iowa	80	110
Minneapolis-St. Paul, Minnesota	130	160
Kansas City, Missouri	240	310
St. Louis, Missouri	350	450



## TOPOGRAPHY

The surface consists of an essentially flat glacial plain of late Wisconsin (Mankato) age. Maximum relief is about 200 feet with the highest points along the west side of the county near Gilmore City, approximately 1,230 feet about sea level. The lowest point along the Des Moines River at the center of the south county line is approximately 1,030 feet above sea level. Humboldt, Iowa, is 1,095 feet above sea level.

The main drainage lines are the east and west forks of the Des Moines River entering the county from the north and northwest and uniting near the south county line.



## CLIMATOLOGY 1/

The average annual temperature was 47.5 degrees between 1931 and 1952. Highest temperature recorded was 110 degrees and the lowest was 27 below zero. The average annual precipitation measured 29.84 inches. Annual snowfall averaged 37.2 inches with the highest average monthly snowfall of 8.5 inches occurring in March.

September 30 is the average date of the first 32 degree freeze in Humboldt County while May 10 is the average date of the last 32 degree freeze. The frost-free season is 145 to 150 days long.

### Probability of Spring 32° Freeze Dates 2/

#### Humboldt County

	<u>In Ten Years</u>
After April 20	8 or more years in 10 years
April 25	8 or more years in 10 years
April 30	8 or more years in 10 years
May 5	6 years to less than 8 years
May 10	4 years to less than 6 years
May 15	2 years to less than 4 years
May 20	Less than 2 years

### Probability of Fall 32° Freeze Dates 2/

#### Humboldt County

	<u>In Ten Years</u>
By September 25	2 years to less than 4 years
September 30	4 years to less than 6 years
October 5	6 years to less than 8 years
October 10	6 years to less than 8 years
October 15	8 or more years in 10 years
October 20	9 - 10 years in 10 years

---

1/ Source: Iowa Department of Agriculture, Weather Division, Cooperating with U.S. Department of Commerce, Weather Bureau.

2/ Source: Iowa Crop and Livestock Reporting Service and Iowa Department of Agriculture, Weather Division.



Table 1

## CLIMATOLOGICAL DATA - HUMBOLDT COUNTY

1931 - 1952

Month	Precipitation		Temperature				
	Total Inches	Snowfall Inches	Mean	Mean Maximum	Mean Minimum	Highest	Lowest
Annual Average	29.84	37.2	47.5	58.3	36.7	110*	-27*
January	1.01	7.9	18.2	27.5	8.9	66	-27
February	0.91	7.4	21.6	31.0	12.1	61	-27
March	1.84	8.5	33.0	42.4	23.5	84	-20
April	2.34	2.3	47.6	59.0	36.1	90	10
May	4.23	0.1	59.7	71.5	47.9	105	24
June	5.35	Trace	69.6	80.8	58.4	105	34
July	3.45	Trace	74.4	86.6	62.2	110	44
August	3.28	0	71.9	83.6	60.2	109	34
September	3.15	0.1	63.7	76.0	51.3	102	21
October	1.66	0.4	52.4	64.8	40.1	92	12
November	1.67	3.8	35.3	45.0	25.5	81	- 7
December	0.95	6.7	23.0	31.7	14.2	65	-22

\* Extreme for period covered.

Source: Iowa Department of Agriculture, Weather Division, cooperating with U. S.  
Department of Commerce, Weather Bureau.



### POPULATION

In 1940 Humboldt County had a population of 13,459. By 1950, the population had dropped to 13,117. The 1960 Census showed a slight increase to 13,156.

### LABOR FORCE

The civilian labor force of Humboldt County was 4,714 at the time of the Census. The 1960 Census showed a 0.3 percent gain over the ten year period from 1950. Humboldt gained 300 persons for a total population of 1,626 in 1960, a 22.6 percent rise from the 1950 Census figure of 1,326.

Table 2

#### AGE AND SEX DISTRIBUTION OF THE LABOR FORCE 1960

<u>AGE</u>	<u>TOTAL</u>	<u>MEN</u>	<u>WOMEN</u>
14-17	302	210	92
18-24	533	359	174
25-34	722	587	135
35-44	1,205	932	273
45-64	1,663	1,249	414
65 and Over	341	264	77

---

Source: U. S. Census: 1960. Population, PC(1)-17C, Table 83.



## Chapter II - HUMBOLDT COUNTY'S PEOPLE



# POPULATION OF HUMBOLDT COUNTY

Humboldt, like many counties in northern Iowa, was one of the first to be settled, and its peak population was reached during the late 19th and early 20th centuries. Primarily dependent on agriculture, Humboldt, like many other Iowa counties, has been affected by the development of agricultural technology. A steady drop has occurred in its population since the early 1900s and by 1950 the population was 13,117. Between 1950 and 1960, a gain of 39 persons, or 0.3 percent, resulted in a total population of 13,156 in 1960.

As a whole, this population loss pattern is also shown in a population breakdown of the townships or civil divisions of Humboldt County. All of the townships had a population loss between 1950 and 1960, except Dakota which had a gain of 10.8 percent, Springvale which had a gain of 25.2 percent and Rutland which had a 1 percent gain. Most of the towns in Humboldt County had population losses between 1950 and 1960.

Table 1

## HUMBOLDT COUNTY TOTAL POPULATION BY SEX

Population	Total				Percent			
	1930	1940	1950	1960	1930	1940	1950	1960
Total Population	13,202	13,459	13,117	13,156	100.0	100.0	100.0	100.0
Men	6,901	6,973	6,687	6,545	52.3	51.8	51.0	49.7
Women	6,301	6,486	6,430	6,611	47.7	48.2	49.0	50.3

Source: 1930 - 1940: U. S. Census: 1940. Characteristics of the Population, Table 22.  
 1950 Data: U. S. Census: 1950. Population, Vol. II, part 15, Table 43.  
 1960 Data: U. S. Census: 1960. Population, PC(1)-17B, Table 27.



Table 2

HUMBOLDT COUNTY COMPONENT POPULATION

County and Minor Civil Division	1930	1940	1950	1960	Percent Change 1950 - 1960
HUMBOLDT COUNTY TOTAL	13,202	13,459	13,117	13,156	+ 0.3
Avery Township	819	770	655	625	- 4.9
Beaver Township	611	586	595	586	- 1.5
Corinth Township	573	562	522	482	- 7.7
Dakota Township	448	537	637	706	+10.8
Delana Township	1,087	1,080	1,030	909	-11.7
Grove Township	535	493	466	403	-13.5
Humboldt Township	1,214	1,200	1,057	922	-12.8
Lake Township	788	701	681	538	-21.0
Norway Township	924	830	813	758	- 6.8
Rutland Township	787	817	730	737	+ 1.0
Springvale Township	2,251	2,819	3,219	4,031	+25.2
Vernon Township	1,239	1,149	1,072	993	- 7.4
Wascousta Township	750	706	630	552	-12.4
Weaver Township	1,176	1,209	1,010	914	- 9.5

Source: 1930, 1940, 1950 Data: U. S. Census, 1950. Population Vol. II,  
Part 15, Table 6.

1960 Data: U. S. Census, 1960, Population, PC(1)-17B,  
Table 25.



Table 3

HUMBOLDT COUNTY COMPONENT POPULATION OF MAJOR TOWNS

Town	1930	1940	1950	1960	Percent Change 1950 - 1960
Bode	507	533	492	430	- 12.6
Bradgate	223	261	188	166	- 11.7
Dakota City	448	537	637	706	+ 10.8
Gilmore City	515	554	459	490	+ 6.8
Hardy	147	168	139	110	- 20.9
Humboldt	2,251	2,819	3,219	4,031	+ 25.2
Livermore	666	736	615	545	- 11.4
Luverne	159	134	116	95	- 18.1
Ottosen	191	152	127	92	- 27.6
Pioneer	98	129	83	448	+439.8
Renwick	491	470	474	477	+ 0.6
Rutland	222	255	225	221	- 1.8
Thor	257	264	271	234	- 13.7

Source: 1930, 1940, 1950 Data: U. S. Census: 1950. Population, Vol. II, Part 15, Table 6.

1960 Data: Census of Iowa for the Year 1960, Table 2, Page 19, State of Iowa Publication.



Table 4

POPULATION CHANGE RURAL-FARM POPULATION COMPOSITION & NET MIGRATION

1950 - 1960

Population	Conterminous (a) U. S.	Iowa	Humboldt County	Humboldt Iowa
Population 1950	150,697,361	2,621,073	13,117	3,219
Population 1960	178,464,236	2,757,537	13,156	4,031
% Change in Population, 1950-1960	+ 18.42	+ 5.21	+ 0.3	+25.2
Rural-Farm Population as % of total population 1950	15.3	29.9	45.2	NA
Rural-Farm Population as % of total population 1960	7.5	24.0	41.0	NA
Net Migration 1950-1960	2,619,371	-229,721	-1822*	NA
Net Migration 1950-1960 as % of 1950 population	+1.74	-8.76	-13.9	NA

NA - Not Available

\* Computed by subtracting the net increase of births from the net increase in population. Data of births and deaths obtained from the Bureau of Vital Statistics, Iowa Department of Health.

(a) Conterminous U.S.: The United States excluding the newly admitted States of Alaska and Hawaii.

Source: 1950 - 1960 U. S. Data: U. S. Census: 1960. Population, PC(1)-1A, Table 1.  
 1950 - 1960 Iowa Data: U. S. Census: 1960. Population, PC(1)-17A, Table 1.  
 Humboldt County Data: U. S. Census: 1950. Population, Vol. II, Part 15, Table 12.  
 Humboldt County Data: U. S. Census: 1960. Population PC(1)-17C, Table 36.  
 Humboldt Iowa Data: U. S. Census: 1950. Population, Vol. II, Part 15, Table 38.  
 Humboldt Iowa Data: U. S. Census: 1960. Population, PC(1)-17C, Table 81.



RURAL AND NONFARM CHANGES 1/

With the exception of the town of Humboldt, the population of Humboldt County is classed as rural by the U. S. Census Bureau. This rural population is divided into rural-nonfarm and rural-farm. The 1950 rural-farm population of 5,932 had decreased to 5,392 by the 1960 Census.

In 1950 the rural-nonfarm segment was 3,966. By 1960 it had decreased to 3,733. The rural-nonfarm population comprised 28.3 percent of the total population in 1960 and the rural-farm population was 41.0 percent.

---

1/ 1950 Data : U. S. Census: 1950. Population, Vol. II, Part 15, Table 48 and 49.

1960 Data : U. S. Census: 1960. Population, PC(1)-17C, Table 91.



### AGE DISTRIBUTION OF THE POPULATION

The age composition of the Humboldt County population is affected by out-migration. The age groups that are gaining or losing in an area are shown through percentage age distribution.

In 1950 the age group of those 14 years and under made up 29.1 percent of the population in Humboldt County, while it was 24.4 in Humboldt, Iowa. At the same time, the Iowa figure was 26.9 percent and the United States average was 26.9. This age group increased to 32.5 percent in Humboldt County by 1960 and to 30.3 percent in the town of Humboldt compared to 31.1 percent in both Iowa and the United States.

The 15-to-24 year age group was 11.6 percent of the Humboldt County population in 1960, and 12.1 percent of the population of the town of Humboldt according to the 1960 Census. At the same time the Iowa figure was 13 percent and the United States figure was 13.4 percent. Apparently little or no migration was occurring in this age group.

The group between 25 and 34 years of age seems to be affected by out-migration. This age group made up 10.7 percent of the Humboldt County and 11.4 percent of the town of Humboldt population in 1960, while it made up 11.5 percent of the Iowa population and 12.7 percent of the United States population.

Following the usual pattern of areas where younger age groups are migrating, the age group 65 years old and over is well above the state and national averages. In 1960 this age group made up 12.2 percent of Humboldt County population and 15.2 percent of the town of Humboldt population in comparison with the Iowa average of 11.8 percent and the United States average of 9.3 percent.



Table 5

## PERCENTAGE AGE DISTRIBUTION

1950 - 1960

Age Range	Conterminous* U. S.		Iowa		Humboldt County		Humboldt Iowa	
	1950	1960	1950	1960	1950	1960	1950	1960
TOTAL	100.0	100.0	100.0	100.0	100.0	100.0	100.0	100.0
14 years & under	26.9	31.1	26.9	31.1	29.1	32.5	24.4	30.3
15 to 24 years	14.7	13.4	14.2	13.0	13.3	11.6	13.1	12.1
25 to 34 years	15.7	12.7	14.3	11.5	14.0	10.7	14.2	11.4
35 to 44 years	14.3	13.4	12.8	12.2	12.8	12.9	11.4	12.7
45 to 54 years	11.5	11.4	11.4	11.0	11.0	10.9	10.7	9.8
55 to 64 years	8.8	8.7	9.9	9.4	9.6	9.2	11.4	8.5
65 years and over	8.2	9.3	10.4	11.8	10.2	12.2	14.8	15.2

Conterminous U. S. : The United States excluding the newly admitted states of Alaska and Hawaii.

Source: 1950 - 1960 Data: U. S. Census 1960, Population, Table 1.

Iowa Data: U. S. Census: 1950, Population, Vol. II, Part 15, Table 15.

Iowa Data: U. S. Census: 1960, Population, PC(1)-17C, Table 37.

Humboldt County Data: U. S. Census: 1950, Population Vol. II, Part 15, Table 41.

Humboldt County Data: U. S. Census: 1960, Population, PC(1)-17B, Table 27.

Humboldt Data: U. S. Census: 1950, Population Vol. II, Part 15, Table 38.

Humboldt Data: U. S. Census: 1960, Population, PC(1)-17B, Table 22.



Table 6

## HUMBOLDT COUNTY POPULATION BY AGE GROUP

Age	1940 1/			1950 2/			1960 3/		
	Total	Men	Women	Total	Men	Women	Total	Men	Women
TOTAL	13,459	6,973	6,486	13,117	6,687	6,430	13,156	6,545	6,611
Under 5 years	1,212	588	624	1,433	720	713	1,486	741	745
5 - 9 years	1,152	581	571	1,252	642	610	1,521	785	736
10 - 14 "	1,205	628	577	1,137	561	576	1,269	609	660
15 - 19 "	1,297	674	623	911	477	434	934	493	441
20 - 24 "	1,186	612	574	829	409	420	595	274	321
25 - 29 "	987	523	464	888	461	427	626	303	323
30 - 34 "	904	470	434	949	472	477	784	383	401
35 - 39 "	909	459	450	882	443	439	813	412	401
40 - 44 "	853	459	394	794	421	373	878	434	444
45 - 49 "	803	403	400	726	378	348	744	363	381
50 - 54 "	733	391	342	715	376	339	691	360	331
55 - 59 "	641	354	287	666	331	335	619	318	301
60 - 64 "	471	243	228	597	319	278	590	305	285
65 - 69 "	417	223	194	542	295	247	571	273	298
70 - 74 "	321	170	151	321	154	167	443	217	226
75 years & over	368	195	173	475	288	247	592	275	317
Under 1 year	217	106	111	290	153	137	291	138	153
21 years & over	8,329	4,369	3,960	8,960	4,219	4,007	7,848	3,875	3,973
Median Age	NA	NA	NA	NA	NA	NA	30.9	30.9	31.0

NA - Not available

1/ U. S. Census: 1940. Characteristics of the Population, Table 22.

2/ U. S. Census: 1950. Population, Vol. II, Part 15, Table 41.

3/ U. S. Census: 1960. Population, PC(1)-17B, Table 27.



## EDUCATIONAL ATTAINMENT IN HUMBOLDT COUNTY

According to the 1960 Census, the Humboldt County school enrollment of 3,418 had this distribution:

Kindergarten	350
Elementary	2,140
High School	885
College	43 <u>1/</u>

The median number of school years completed by the population over age 25 was 11.1 years for men and 12.2 for women. Half the population had fewer years of education than the median while half had more years.

Table 7 shows the number of school years completed by persons 25 years of age and older. Today the greater emphasis on education has contributed to the increase in years of schooling between 1950 and 1960. The number of school years completed should continue to rise as younger people move into this age group.

---

1/ For Census purposes in 1960 college students were enumerated where they lived while attending college rather than in their home community. Thus the count for a given county does not show how many permanent residents of a particular county are in college.



Table 7

YEARS OF SCHOOL COMPLETED

(Persons 25 years old and over)

HUMBOLDT COUNTY

1950 - 1960

Years Completed	1950	1960
Elementary 1 to 4 years- - - - -	180	133
5 to 6 years- - - - -	355	263
7 years - - - - -	395	372
8 years - - - - -	2,190	1,681
High School 1 to 3 years - - - - -	1,145	1,094
4 years - - - - -	1,980	2,533
College 1 to 3 years - - - - -	715	868
4 or more years- - - - -	250	387
Median years completed - - - - -	10.3	11.7

Source: 1950 Data: U. S. Census: 1950. Population, Vol. II, Part 15, Table 42.

1960 Data: U. S. Census: 1960. Population, PC(1)-17C, Table 83.



## MANPOWER RESOURCES 1/

A total of 2,658 persons participated in the Humboldt County Manpower Study conducted between March and June 1965. Participants included 372 employed workers and 693 unemployed. One hundred and nine women were employed and 502 women were listed as unemployed.

These 2,658 participants showed a potential for an average of 4 occupational fields of work. Available workers in Humboldt County could easily staff a medium-size plant of 100 to 200 production workers in numerous industries. Their necessary natural ability would result in relatively rapid training and high productivity.

---

1/ See Manpower Occupational Potential Inventory for complete tabulations of Manpower Resources.



### Chapter III - HUMBOLDT COUNTY'S LABOR FORCE



## EMPLOYMENT TRENDS

In 1940 Humboldt County had a population of 13,459 of which 10,125 were 14 years of age and older. The labor force totaled 4,851 or 47.9 percent of the people 14 years of age and older. The labor force is defined as the civilian labor force excluding members of the armed forces.

Since they are the potential members of the labor force, people in the 14 years old or older age group are the labor supply source for an area. The percentage of the people in this age group is called the labor force participation rate. This rate may be used as a rough measure to estimate how many additional persons could reasonably be expected to work if suitable jobs were available.

Persons who were 14 years of age or older who were not in the labor market included: (1) unpaid family members working less than 15 hours a week; (2) students; (3) inmates of institutions and (4) people with other long-term disabilities or retired persons.

In 1950 Humboldt County had 9,489 persons 14 years of age and older. Its civilian labor force was 4,969 in the U. S. Census. Its 52.3 percent labor force participation rate indicates that a greater percentage of the population 14 years of age and over was in the labor force than in 1940 and that a greater utilization of the county's labor force was taking place.

By 1960, Humboldt County had 9,034 persons 14 years of age and older. Its civilian labor force numbered 4,771 and the labor force participation rate was 52.8 percent.

To estimate how many additional people could be expected to join the labor force, the Humboldt County labor force participation rate may be compared with the overall United States labor force participation rate. Since the United States rate of 54 percent is only 1.2 percent higher than the Humboldt County rate and the Iowa rate of 54.27 percent is only 1.47 higher than the Humboldt County rate, only a small increase in this rate should be expected.



However, the size of the age group over 14 years of age is an important factor in estimating how many additional workers could be added to the labor force. In 1950 this age group made up 72.3 percent of the population. However, by 1960, 68.7 percent of the population was in this age group. The small decrease between 1950 and 1960 can best be attributed to out-migration resulting from the scarcity of job opportunities in the area. As in the other surrounding counties, the loss of these potential members of the labor force would be reduced if sufficient employment opportunities were available.



Table 1

SUMMARY POPULATION AND LABOR FORCE DATAHUMBOLDT COUNTY

1950 - 1960

Population	April 1950			Total Net Change Between 1950 & 1960	April 1960		
	Total	Men	Women		Total	Men	Women
Total Population	13,117	6,687	6,430	+ 39	13,156	6,545	6,611
Civilian Population	13,115	6,685	6,430	+ 41	13,156	6,545	6,611
Civilian Population 14 years & over	9,489	4,863	4,626	-455	9,097	4,516	4,581
Percent of Civilian Population	72.3	72.7	72.0	xxx	68.7	69.0	69.3
Civilian Labor Force	4,967	4,062	905	-196	4,771	3,606	1,165
Percent of Population 14 years & over	52.3	83.5	19.1	xxx	52.8	79.8	25.8
Unemployed	106	83	23	- 18	88	67	21
Employed	4,859	3,977	882	-176	4,683	3,539	1,144

Source: 1950 Data: U. S. Census: 1950, Population, Vol. II, Part 15, Table 43.

1960 Data: U. S. Census: 1960, Population, PC(1)-17C, Tables 82, 84, and 85.



Table 2

HUMBOLDT COUNTY EMPLOYMENT BY INDUSTRY

INDUSTRY	1940 <u>1/</u>	1950	1960
TOTAL LABOR FORCE	4,439	4,859	4,683
Agriculture	2,260	2,155	1,662
Forestry & Fisheries			
Mining	4	16	36
Construction	209	336	256
Manufacturing	165	255	440
Railroad & Railroad Express	40	46	21
Trucking Service & Warehousing	85	92	76
Other Transportation	12	13	16
Communications	29	42	51
Utilities and Sanitary Service	31	69	157
Trade	635	816	924
Finance, Insurance & Real Estate	72	75	99
Service (including schools)	702	692	746
Public Administration	97	144	127
Occupation not given	98	108	72

1/ Excludes those on public emergency work.

Source: 1940 Data: U.S. Census: 1940. Characteristics of Population, Table 23.

1950 Data: U.S. Census: 1950. Population, Vol. II, Part 15, Table 43

1960 Data: U.S. Census: 1960. Population, PC(1)-17C, Table 84 and 85.



### EMPLOYMENT BY INDUSTRY AND OCCUPATION

Humboldt County had 2,576 persons in agricultural employment in 1940. Agricultural employment dropped 4.6 percent to 2,155 by 1950 and 1960 agricultural employment was 1,662, a drop of 22.9 percent in the 10 year period. By contrast, in 1940 Humboldt County had 165 persons employed in manufacturing industries; by 1950 this figure was 255 or a 54.5 percent increase over the decade. Again a large increase took place in the decade between 1950 and 1960. In 1960 manufacturing totaled 440, an 80.3 percent increase from 1950.

This growth had been evident in many Iowa cities and towns, as people move from the farm into urban areas. Humboldt, like many other Iowa counties, has seen a downward trend in agricultural employment and a noticeable increase in some segments of nonagricultural employment.

The number of farm laborers and foremen dropped from 600 in 1950 to 357 in 1960. During the same period the number of farmers and farm managers declined from 1,526 to 1,264.



Table 3

HUMBOLDT COUNTY EMPLOYMENT BY OCCUPATION AND EXPERIENCED UNEMPLOYED

Occupation	1950		1960	
	Total Employed	Total Experienced Unemployed	Total Employed	Total Experienced Unemployed
TOTAL	4,859	106	4,683	88
Professional, Technical & Kindred	313	1	363	4
Farmers - Farm Managers	1,526	-	1,264	4
Managers, Except Farm	384		410	
Clerical & Kindred	279	1	344	11
Sales Workers	260	1	347	
Craftsmen, Foremen & Kindred	487	13	478	18
Operative & Kindred	385	10	447	18
Private Household Workers	104	4	82	4
Service Workers	230	9	369	9
Farm Laborers & Foremen	600	7	357	4
Other Laborers	214	26	147	8
Occupation not given	77	34	75	8

Source: 1950 Data: U.S. Census: 1950. Population, Vol. II, Part 15, Table 43.

1960 Data: U.S. Census: 1960. Population PC(1)-17C, Tables 84 and 85.



## UNEMPLOYMENT STATISTICS

The U. S. Census of Population defines the labor force as "all persons employed or unemployed . . ."

"Employed persons comprised all civilians 14 years old and over who were (a) "at work"  
- - -those who did any work for pay or profit, or those who worked without pay for 15 hours or more on a family farm or in a family business; or (b) were "with a job or not at work"  
- - -those who did not work and were not looking for work but had a job or business from which they were temporarily absent because of bad weather, industrial dispute, vacations, illness, or other personal reasons.

"Persons classified as unemployed are those 14 years old and who are not at work but are looking for work. A person is considered looking for work not only if he actually tries to find work during the reference week but also if he made such efforts within the past 60 days and is awaiting the results of the efforts.

"Persons waiting to be called back to a job from which they have been laid off or furloughed are also counted as unemployed. Unemployed persons with previous work experience are classified as the experienced unemployed."

In 1950 Humboldt County had 106 unemployed individuals and in 1960 it had 88 experienced unemployed according to the U. S. Census.



The results of the study are presented in Table 1. The data show that the majority of the subjects were in the 20-30 age range, with a mean age of 25. The subjects were predominantly male, with a male-to-female ratio of approximately 3:1. The subjects were recruited from a variety of sources, including local newspapers, radio stations, and community centers.

The subjects were divided into two groups: a control group and an experimental group. The control group consisted of 20 subjects, and the experimental group consisted of 20 subjects. The subjects in the control group were given a standard test, while the subjects in the experimental group were given a modified test. The results of the study are presented in Table 1.

The results of the study show that the subjects in the experimental group performed significantly better than the subjects in the control group. The subjects in the experimental group were able to complete the modified test in a shorter amount of time than the subjects in the control group. This suggests that the modified test is more effective than the standard test. The results of the study are presented in Table 1.

The results of the study are presented in Table 1. The data show that the majority of the subjects were in the 20-30 age range, with a mean age of 25. The subjects were predominantly male, with a male-to-female ratio of approximately 3:1. The subjects were recruited from a variety of sources, including local newspapers, radio stations, and community centers.

### AREA SKILL INVENTORY

The results of the study are presented in Table 1. The data show that the majority of the subjects were in the 20-30 age range, with a mean age of 25. The subjects were predominantly male, with a male-to-female ratio of approximately 3:1. The subjects were recruited from a variety of sources, including local newspapers, radio stations, and community centers.

The results of the study show that the subjects in the experimental group performed significantly better than the subjects in the control group. The subjects in the experimental group were able to complete the modified test in a shorter amount of time than the subjects in the control group. This suggests that the modified test is more effective than the standard test. The results of the study are presented in Table 1.

The results of the study are presented in Table 1. The data show that the majority of the subjects were in the 20-30 age range, with a mean age of 25. The subjects were predominantly male, with a male-to-female ratio of approximately 3:1. The subjects were recruited from a variety of sources, including local newspapers, radio stations, and community centers.

The results of the study show that the subjects in the experimental group performed significantly better than the subjects in the control group. The subjects in the experimental group were able to complete the modified test in a shorter amount of time than the subjects in the control group. This suggests that the modified test is more effective than the standard test. The results of the study are presented in Table 1.



## GENERAL FINDINGS

The major findings on new or additional jobs are shown in Table 1. Firms in the survey employed 1,567 persons and expected to employ an additional 171 persons by 1967. Between 1965 and 1970, these firms predicted a total of 331 additional employees. Manufacturing firms appeared to offer the greatest potential of new jobs during the forecast periods.

Since this survey considered only current reporting firms, other job opportunities could arise during the forecast periods as a result of new firms coming to the area. Gains in new jobs might also be found in present firms that did not return questionnaires or were missed.

Besides normal turnover needs that may occur when a worker leaves one job to take another, job openings are also created when presently employed workers retire or otherwise leave the labor force. Although the number of jobs resulting from retirements can not be estimated, the age of present workers may give some indications. Table 2 and Table 3 shows the age of currently employed persons by industry and by major occupational group. There are 77 workers in the 60-to-64 age group and 56 workers in the 65 or older age group.

If we assume that most of the workers in these groups will retire or leave the labor force in the next five years, about 100 additional jobs could be expected by 1970. Most of these jobs would be for men.

In summary, about 331 additional jobs in present firms plus 100 jobs resulting from persons leaving the labor force could result in 431 available nonagricultural jobs between 1965 and 1970.

However, since the natural population growth is not now being retained in the area, other negative factors may be at work. For instance, in 1963 Humboldt County had 251 births and 132 deaths resulting in a natural population increase of 119 persons. At this yearly rate, the 1964 population should have been about 400 more than in 1960.

Yet a loss of about 100 persons since 1960 is shown by a population estimate for July 1, 1964 by the Vital Statistics Division of the Iowa Department of Health. This apparent net loss in population stems from outmigration and it may be assumed that the growth in persons seeking jobs has exceeded new job opportunities.

A greater expansion in job opportunities than presently forecast may be necessary if the county hopes to expand its population and retain its natural increase. Declining job opportunities in agriculture may partially balance out expected jobs in the nonagricultural segment. In addition, if more persons in a given age group enter the work force more job opportunities would be required even though the population did not change. In general this has been the case with the growth in the number of women who work. When more persons seek jobs, additional jobs are needed even if the population does not increase.



Table 1

CURRENT AND ESTIMATED NET GAINS BY 1967 AND 1970 in  
WAGE AND SALARY EMPLOYEES BY INDUSTRY GROUP\*

Industry Group	Wage and Salary Employees During Survey Period	Expected Net Gains in Wage and Salary Workers From Survey Period To	
		1967	1970
Construction	37	1	1
Manufacturing	281	76	159
Transportation, Communication & Public Utilities	149	1	10
Wholesale Trade	83	10	18
Retail Trade	342	36	46
Finance, Insurance & Real Estate	73	2	5
Service & Miscellaneous	602	45	92
TOTAL	1,567	171	331

\* All reporting firms Humboldt, Iowa Labor Area

NOTE: Data includes estimates from small firms and government units that were not contacted for occupational details.

O.P.P. LIBRARY COPY



Table 2

## AGE AND SEX OF WAGE AND SALARY EMPLOYEES BY INDUSTRY GROUP\*

Industry Group	Total All Ages			Under 22			22 - 30			31 - 45			46 - 59			60 - 64			65 & Over			I.N.A.**		
	T	M	W	T	M	W	T	M	W	T	M	W	T	M	W	T	M	W	T	M	W	T	M	W
Construction	37	33	4	7	7	0	9	7	2	8	8	0	10	8	2	1	1	0	1	1	0	1	1	0
Manufacturing	281	246	35	22	19	3	65	61	4	112	93	19	51	45	6	8	5	3	5	5	0	18	18	0
Transportation Communication & Public Utilities	149	130	19	3	1	2	23	20	3	64	60	4	38	32	6	10	9	1	2	2	0	9	6	3
Wholesale Trade	83	76	7	8	8	0	21	19	2	23	22	1	27	24	3	2	2	0	0	0	0	2	1	1
Retail Trade	342	192	150	77	35	42	57	40	17	88	53	35	75	34	41	9	5	4	17	10	7	19	15	4
Finance, Insurance & Real Estate	73	31	42	8	0	8	10	5	5	30	14	16	13	5	8	2	2	0	3	3	0	7	2	5
Service & Other	602	297	305	28	10	18	110	51	59	176	104	72	182	85	97	45	17	28	28	17	11	33	13	20
TOTAL	1567	1005	562	153	80	73	295	203	92	501	354	147	396	233	163	77	41	36	56	38	18	89	56	33

\*All reporting firms Humboldt, Iowa Labor Area, survey period February-June 1965.

\*\* Information Not Available.



Table 3

## AGE AND SEX OF WAGE AND SALARY EMPLOYEES BY OCCUPATION CLASSIFICATION\*

Industry Group	Total All Ages			Under 22			22 - 30			31 - 45			46 - 59			60 - 64			65 & Over			I.N.A.**		
	T	M	W	T	M	W	T	M	W	T	M	W	T	M	W	T	M	W	T	M	W	T	M	W
Professional, Semi- Professional & Managerial	346	230	116	4	4	0	96	55	41	124	99	25	77	47	30	26	11	15	9	6	3	10	8	2
Clerical and Sales	406	149	257	48	9	39	59	26	33	146	64	82	105	31	74	11	3	8	10	6	4	27	10	17
Service	199	40	159	35	3	32	18	3	15	35	6	29	63	12	51	16	4	12	20	9	11	12	3	9
Agriculture, Fishery & Forestry	25	23	2	1	1	0	6	6	0	6	5	1	10	9	1	2	2	0	0	0	0	0	0	0
Skilled	270	255	15	15	13	2	44	44	0	95	89	6	83	77	6	10	9	1	8	8	0	15	15	0
Semi-Skilled	211	203	8	24	24	0	51	50	1	66	65	1	37	36	1	7	7	0	6	6	0	20	15	5
Unskilled	110	105	5	26	26	0	21	19	2	29	26	3	21	21	0	5	5	0	3	3	0	5	5	0
TOTAL	1567	1005	562	153	80	73	295	203	92	501	354	147	396	233	163	77	41	36	56	38	18	89	56	33

\* All reporting firms during survey period February-June 1965.

\*\* Information Not Available.



## DETAILED REVIEW OF 19 SELECTED FIRMS

In the group of larger firms excluding government units, 19 firms expected some employment gains during the forecast periods.

Table 4 shows that manufacturing firms with 188 employees during the survey period may add 74 workers by 1967 and a total of 157 new workers by 1970. Among the 19 reporting firms, manufacturing shows the greatest new job potential during the forecast period.

Table 5 gives details on the specific occupations that are expected to increase during the forecast period in these 19 firms. Most of these job increases are found in the unskilled group. The semi-skilled group shows an increase only in the occupation of truck driver. In the skilled occupations, foremen, carpenters, welders and mechanics were expected to increase. Some gains were also reported in the professional, managerial, clerical and sales group.

Specific expected gains in the 1965 to 1967 forecast period and in the 1965 to 1970 forecast period are:

### Manufacturing

To 1967---Men: 1 technician, 1 management, 2 truck drivers, 4 carpenters,  
1 foreman, 55 laborers, and 2 welders.

Women: 4 assemblers and 4 clerical workers.

to 1970---Men: 1 technician, 1 management, 2 agricultural chemistry, 4  
truck drivers, 12 carpenters, 1 foreman, 2 welders,  
and 120 laborers.

Women: 4 assemblers and 10 clerical workers.

### Transportation, Communications and Public Utilities

To 1967---Men: 1 laborer.

To 1970---Men: 8 laborers.

Women: 1 clerical worker.



Wholesale Trade

To 1967---Men: 1 foreman, 1 truck driver, and 3 laborers.

To 1970---Men: 1 foreman, 1 truck driver, 1 livestock buyer and 7 laborers.

Retail Trade

To 1967---Men: 4 carpenters, 3 mechanics and 2 laborers.

To 1970---Men: 4 carpenters, 3 mechanics and 3 laborers.



Table 4

CURRENT EMPLOYMENT AND EXPECTED NET GAIN BY 1967 AND 1970  
BY INDUSTRY GROUP\*

Industry Group	During Survey Period	Expected Net Gain from 1965 Survey Period To					
		1 9 6 7			1 9 7 0		
		Total	Men	Women	Total	Men	Women
Construction	0	0	0	0	0	0	0
Manufacturing	188	74	66	8	157	143	14
Transportation, Communication & Public Utilities	109	1	1	0	9	8	1
Wholesale Trade	43	5	5	0	10	10	0
Retail Trade	48	9	9	0	10	10	0
Finance, Insurance & Real Estate	0	0	0	0	0	0	0
Service & Other	0	0	0	0	0	0	0
TOTAL	388	89	81	8	186	171	15

\* Data from 19 larger firms in Humboldt, Iowa Labor Area during survey period  
 February - June 1965.



Table 5

EXPECTED NET GAIN BY OCCUPATIONS OF WAGE AND SALARY EMPLOYEES  
BY 1967 AND BY 1970\*

Occupational Classification	Expected Net Gain from 1965 Survey Period to					
	1 9 6 7			1 9 7 0		
	Total	Men	Women	Total	Men	Women
Professional, Semi- Professional & Managerial	2	2	0	5	5	0
Clerical & Sales (Bookkeeper)	4 (0)	0 (0)	4 (0)	11 (1)	0 (0)	11 (1)
Service	0	0	0	0	0	0
Skilled	15	15	0	23	23	0
(Foreman)	(2)	(2)	(0)	(2)	(2)	(0)
(Carpenter)	(8)	(8)	(0)	(16)	(16)	(0)
(Welder)	(2)	(2)	(0)	(2)	(2)	(0)
(Mechanic)	(3)	(3)	(0)	(3)	(3)	(0)
Semi-Skilled (Truck Driver)	3 (3)	3 (3)	0 (0)	5 (5)	5 (5)	0 (0)
Unskilled & Others	65	61	4	142	138	4
(Laborers)	(61)	(61)	0	(138)	(138)	(0)
(Assemblers)	(4)	(0)	(4)	(4)	(0)	(4)
TOTAL	89	81	8	186	171	15

\* Data from 19 larger firms in Humboldt, Iowa Labor Area during survey period  
February through June, 1965.

NOTE: Figures in parenthesis show job breakdown in various occupational classifications.



### COMMUTING PATTERN

Data obtained on the residence of workers employed in Humboldt County is shown by industry, occupation and sex in Tables 6 and 7.

The number of workers employed by Humboldt County firms who live outside of the county is rather small. However, Table 6 and 7 on the commuting pattern do not tell the whole story. Some persons listed in these tables as living outside Humboldt County are probably sales representatives living in other areas of the state.

To check further on the commuting distance, workers in the study were asked how far they traveled one way to get to work. Data from 65 of the 74 workers who lived outside Humboldt County showed that on the average this group traveled 12 miles one way to get to work.



Table 6

## COMMUTING PATTERN BY INDUSTRY GROUP OF WAGE AND SALARY EMPLOYEES\*

INDUSTRY GROUP	LIVING IN HUMBOLDT COUNTY			LIVING OUTSIDE HUMBOLDT COUNTY		
	Total	Men	Women	Total	Men	Women
Construction	36	32	4	1	1	0
Manufacturing	259	225	34	22	21	1
Transportation, Communication & Public Utilities	146	127	19	3	3	1
Wholesale Trade	77	70	7	6	6	0
Retail trade	328	176	149	14	13	1
Finance Insurance & Real Estate	70	29	41	3	2	1
Service & Other	577	288	289	25	9	16
TOTAL	1493	950	543	74	55	19

Table 7

## COMMUTING PATTERN BY OCCUPATIONAL CLASSIFICATION OF WAGE AND SALARY EMPLOYEES\*

OCCUPATIONAL CLASSIFICATION	LIVING IN HUMBOLDT COUNTY			LIVING OUTSIDE HUMBOLDT COUNTY		
	Total	Men	Women	Total	Men	Women
Professional, Semi- Professional, & Managerial	323	218	105	23	12	11
Clerical & Sales	389	137	252	17	12	5
Service	194	38	156	5	2	3
Agriculture, Fishery & Forestry	25	23	2	0	0	0
Skilled	259	244	15	11	11	0
Semi-Skilled	196	188	8	15	15	0
Unskilled & Others	107	102	5	3	3	0
TOTAL	1493	950	543	74	55	19

\* Humboldt, Iowa Labor Area - All reporting firms during survey period February-June, 1965



## DURATION OF EMPLOYMENT

Some indication of the amount of turnover in an industry or occupation can be obtained through data on employees' length of employment shown in Table 8 and Table 9. Almost one-half of the 1327 workers who provided this information had been in their present job five or more years. Both retail and manufacturing firms indicated a substantial number of their workers had been on the job less than five years.



Table 8

## DURATION OF EMPLOYMENT BY INDUSTRY OF WAGE AND SALARY EMPLOYEES\*

Industry Group	Less Than 5 Years			5 Years But Less Than 10			10 Years But Less Than 15			15 Years And Over			Information Not Available			Total		
	T	M	W	T	M	W	T	M	W	T	M	W	T	M	W	T	M	W
Construction	12	10	2	6	6	0	4	4	0	2	2	0	13	11	2	37	33	4
Manufacturing	129	112	17	57	52	5	17	17	0	26	26	0	52	39	13	281	246	35
Transportation Communication & Public Utilities	31	23	8	28	24	4	39	36	3	42	42	0	9	5	4	149	130	19
Wholesale Trade	45	40	5	12	10	2	6	6	0	11	11	0	9	9	0	83	75	7
Retail Trade	161	85	76	54	34	20	21	13	8	16	11	5	90	49	41	342	192	150
Finance, Insurance & Real Estate	29	13	16	17	6	11	10	4	6	11	5	6	6	3	3	73	31	42
Service & Other	278	122	156	139	75	64	64	38	26	60	37	23	61	25	36	602	296	305
TOTAL	685	405	280	313	207	106	161	118	43	168	134	34	240	141	99	1567	1005	562

\* All reporting firms Humboldt, Iowa Labor Area during survey period February-June 1965.



Table 9

## DURATION OF EMPLOYMENT BY OCCUPATIONAL CLASSIFICATION\*

Occupational Classification	Less Than 5 Years			5 Years But Less Than 10			10 Years But Less Than 15			15 Years and Over			Information Not Available			Total		
	T	M	W	T	M	W	T	M	W	T	M	W	T	M	W	T	M	W
Professional, Semi- Professional & Managerial	161	95	66	80	55	25	34	25	9	56	43	13	15	12	3	346	230	116
Clerical & Sales	184	55	129	76	26	50	48	25	23	35	20	15	63	23	40	406	149	257
Service	92	18	74	34	10	24	9	2	7	10	4	6	54	6	48	199	40	159
Agriculture, Fishery & Forestry	9	9	0	3	3	0	7	7	0	3	3	0	3	1	2	25	23	2
Skilled	102	95	7	67	63	4	30	27	3	42	42	0	29	28	1	270	255	15
Semi-Skilled	100	98	2	31	29	2	26	25	1	15	15	0	39	36	3	211	203	8
Unskilled	37	35	2	22	21	1	7	7	0	7	7	0	37	35	2	110	105	5
TOTAL	685	405	280	313	207	106	161	118	43	168	134	34	240	141	99	1567	1005	562

\* All reporting firms Humboldt, Iowa Labor Market Area during survey period February through June 1965.



### METHODOLOGY

Questionnaires were sent during February through June 1965 to 476 firms based on addresses from telephone books covering Humboldt County. A follow-up mailing was sent to those who did not respond. A preliminary tally indicated a response from 322 firms or about a 68 percent return.

The study was made by a volunteer group in the area with some guidance from agency staff. In the town of Humboldt, coverage of firms was nearly complete and a follow-up was made on 19 of the larger firms that expected some employment increase by 1967 and 1970. This follow-up was made by the Rural Area Representative.

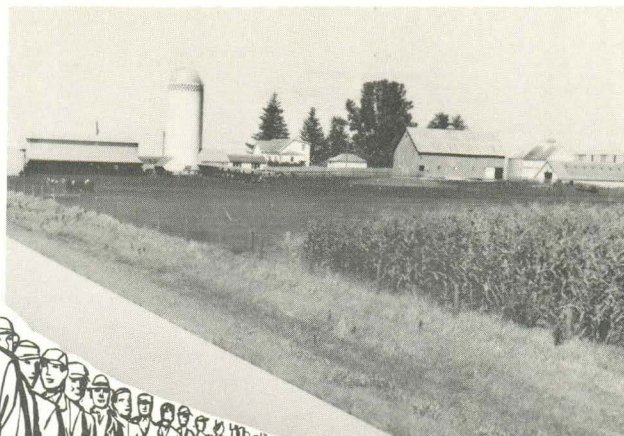
In addition, 91 firms with very low employment levels or government units with some expected job increases during the forecast periods were included. Limited time did not permit further follow-up of this group and only an estimate of additional jobs expected during the forecast periods could be prepared.

However, when a small firm expected expansion during the two-year forecast period to 1967 we assumed the firm would probably only add one person. If further expansion were expected by 1970, we assumed that a total of two persons would be added.

Larger government units were expected to grow at about the same rate as the state trend for government from 1959 to 1964.



A COMMUNITY  
**grows!**

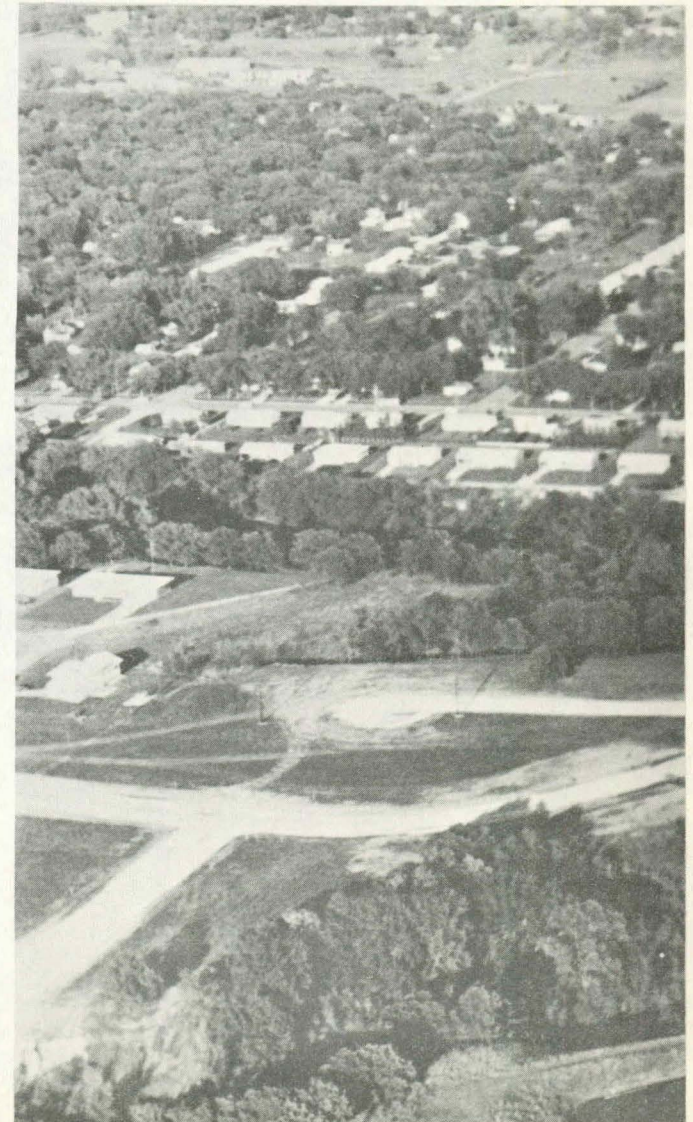


**HUMBOLDT COMMUNITY**





## HUMBOLDT



Humboldt County is populated by 13,000 progressive ambitious people. The County is made up of a rich agricultural area with many fine farms, and several towns of varying size including (alphabetically) Bode, Bradgate, Dakota City, Gilmore City, Hardy, Humboldt, Livermore, Lu Verne, Ottosen, Pioneer, Renwick, Rutland, and Thor.

Humboldt County has 1,176 farms with a total of 267,362 acres of which 90% is in cropland. There were 101,599 acres in corn in 1964, 65,738 acres in beans, with the remaining acres in other crops. The county had hogs, cattle and lambs numbering more than 50,000 head in the same year, and hens totaling 124,761.

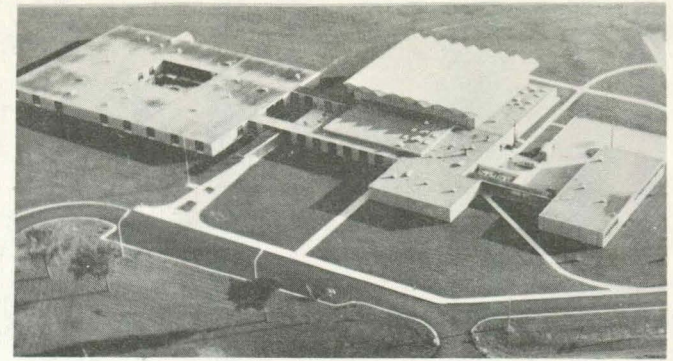
The County Seat Town of Dakota City, and Humboldt, the county's largest city, lie side-by-side, with corporation limits joining, and account for more than 4,900 of the population in the county. Humboldt is a rapidly growing city with beautiful wide streets, and some of the most impressive residential sections in the middle west.

The Rev. Stephen Taft, a century back, planned and laid out the spacious street and park system that today catches the admiring eyes of all who pass this way.

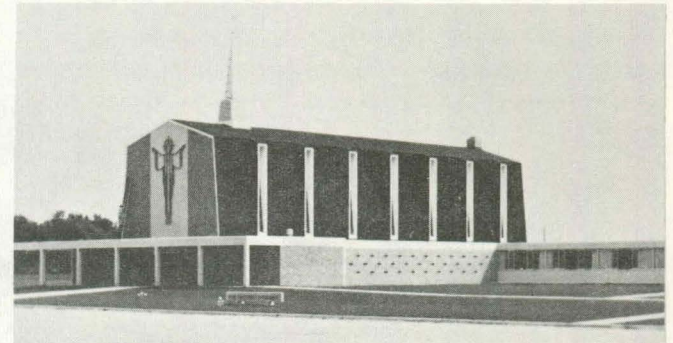


# CHURCHES, SCHOOLS AND HOSPITAL

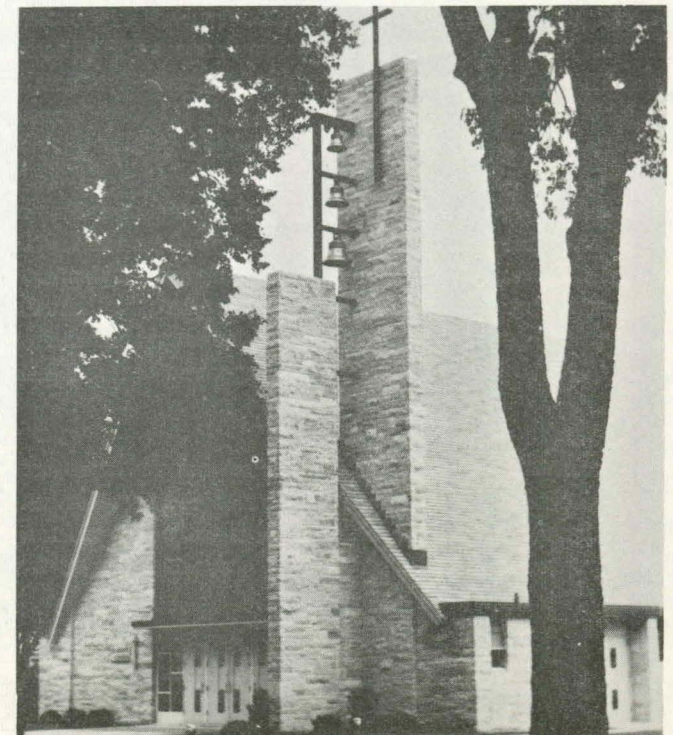
Humboldt County is liberally sprinkled with Churches of most denominations. The Lutheran, Methodist, and Catholic Churches have the largest number of members. The county has no Jewish Synagogue, the closest being located in Fort Dodge, some 10 miles south of the county line.



The Lutheran, Catholic and United Church of Christ congregations in the City of Humboldt have recently completed new and outstandingly beautiful facilities to accomodate past and expected growth in their memberships. The city also has Zion Lutheran, Baptist, Methodist, Seventh Day Adventist and Assembly of God Churches within its environs.



The Pastors in the area deem the general religious atmosphere of the community to be above average. Attendance to services are estimated to exceed 60% of membership. Interdenominational relationships are open and friendly at all local levels.



The Humboldt Community School District serves a major portion of the County and is centered in the City of Humboldt. High School and Junior High facilities for the District are located here, a new High School having been completed in 1964.

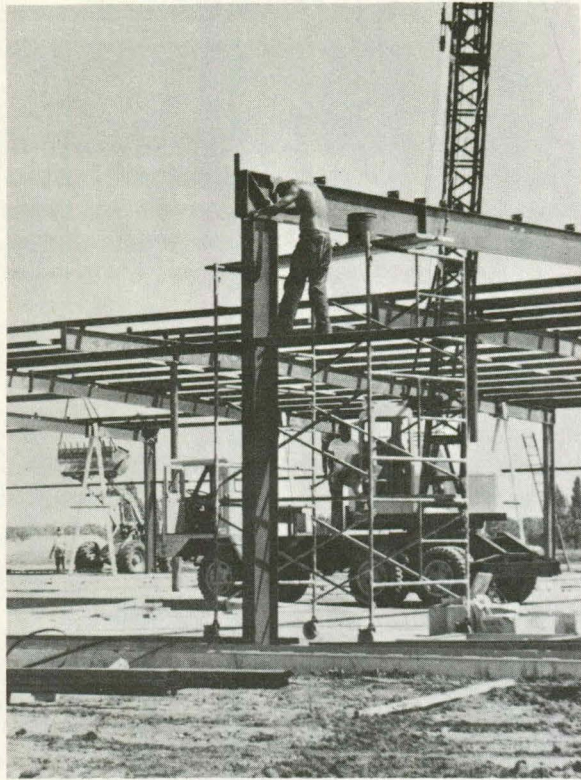
The effectiveness of the school program can be attested to by ratings received on the Iowa Basic Skills of Educational Development tests given students each year. The Humboldt Community School District High School classes have ranked in the top 10% nationally over the past 10 years. The pupil drop-out rate is consistently low and is currently running approximately one-half the state average.

A program is underway for a Humboldt County Memorial Hospital. It is expected that an election will be held in late 1965 or early 1966 for a voter approved bond issue to supplement a quarter million dollar hospital fund on hand, and a twelve acre site near the intersection of Highways U. S. 169 and Iowa 3.



## HUMBOLDT COUNTY SEEMS TO HAVE THAT

### "EXTRA SOMETHING" THAT ENCOURAGES INDUSTRIAL GROWTH



Perhaps it's the adaptability and healthy work attitudes of the sons and daughters of its industrious farmers; or perhaps the progressive enthusiasm of its business people. Maybe it's the broad tax base and favorable tax rates; or maybe it's the rural setting in near proximity to the facilities and services of a large city. It might be partly a result of the effective help extended by its community, developmental, and financial organizations or the welcoming cooperation of its county and city officials and boards.

Whatever the reason Humboldt County has enjoyed phenomenal industrial growths--its old industries have prospered and expanded and many new industries have been attracted. A wide diversity of industrial jobs have greatly contributed to the healthy economy of the county.

Industry in Humboldt County is principally located in and around Humboldt-Dakota City. Here dairy products and farm seed are processed--farm fertilizer is produced--farm equipment, conveying equipment, industrial machinery, cleaning and spraying equipment and truck bodies are manufactured--aggregate is extracted and concrete products formed--electricity is generated and distributed--wood is worked into church furniture and plastic molded into athletic equipment--many

building tradesmen centered here erect large commercial, industrial, and institutional buildings as proficiently as they do farm structures and residential homes.

Moreover; if its people and their organizations have their way, Humboldt County will continue its industrial growth. The Humboldt-Dakota City Chamber of Commerce and the Humboldt County Development Corporation are very active helping existing industry and seeking new industry.

These organizations recently co-sponsored a county-wide manpower potential survey conducted by the Iowa State Employment Service. Thirty-five hundred county residents participated and 1,065 were interviewed and tested. Results indicated that the labor force in the county possessed the inherent abilities for exceptional productivity in many industrial occupations and that there is a need and an opportunity in the county for an industry to employ up to 200 or more highly educated and versatile women. Full details of this survey are available from either the Humboldt County Development Corporation or Iowa Employment Security Commission, 1000 E. Grand, Des Moines, Iowa #50316.

Excellent community-owned industrial sites are available in Humboldt's Industrial Park. The Development Corporation also has listings on many other industrial sites in the county. We welcome your inquiry.





Humboldt points with pride to the mark it has made over the years in the retail field. Every need of the individual or family can be found in it's thriving modern business establishments. "More businesses than we have buildings for, and still more looking for locations" just about describes the growth and vitality of this business community.

The U. S. Census of Business shows a 63.1% increase in retail sales in Humboldt-Dakota City during the period of 1948 to 1958. And the upward trend continues, as verified by periodic State Sales Tax reportings. For example, since 1960, the yearly increase in retail sales has risen as much as 16.6%.

Two large progressive banks, both in beautiful and spacious new buildings, attest to the financial stability of this community. News and advertising media give excellent coverage throughout the county and surrounding area. The Humboldt Republican, The Humboldt Independent, and the Humboldt Reminder serve this shopping area with a penetrating quality and sincere pride seldom found in many larger cities.

## RETAIL

## SALES



# HOUSING

Humboldt is not a stagnant, declining rural town. Rather it's a dynamic, progressive, wide-awake and confident little city.

According to the 1960 Census, Humboldt is next to Cedar Rapids in having the fastest growth rate in Iowa; 25.2% in ten years!

Evidence that expansion continues is shown by the 211 new homes built since 1960, ranging in price from \$38,000 to \$9,500, and by the 371 permits for remodeling or rooms and garages added to dwellings.

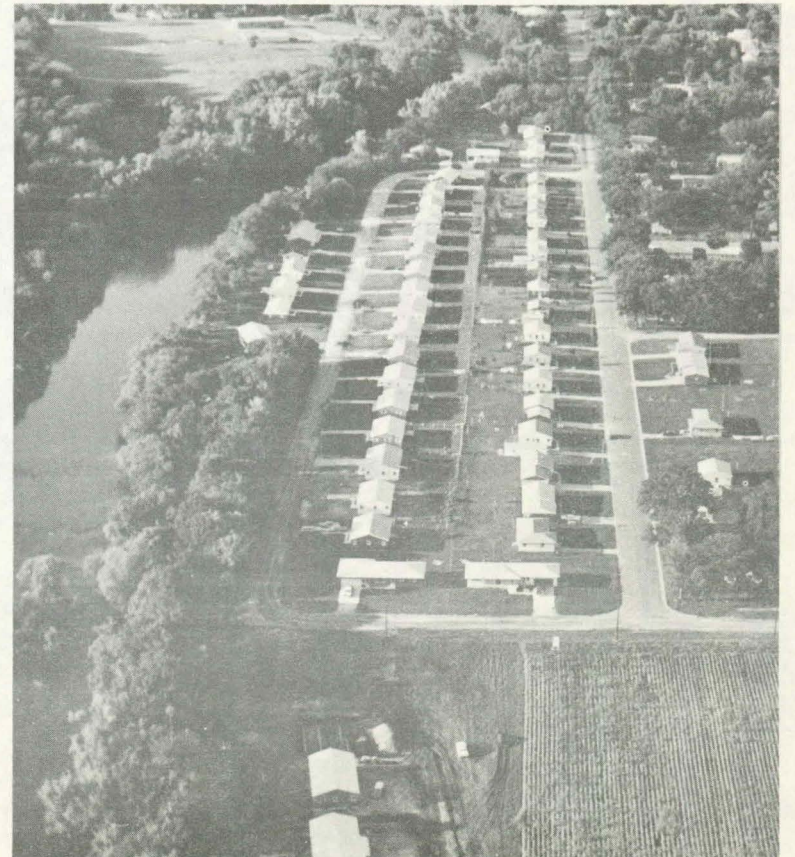
A realtor estimates that 90% of the houses are owner-occupied. They are kept in excellent condition and are on tree-shaded, wide, paved streets. Water and sewer facilities are provided.

There are rental units available for non-home owners. Several modern apartments provide first-class housing at a cost of \$90 to \$135. About 25 or 30 older houses have been converted to two-family units and rent for \$50 to \$80 per month. Nearly 100 houses are occupied by non-owners, who pay monthly rents from \$75 to \$125. One hotel and two motels provide 61 rooms at rates of \$3.50 to \$12.00 depending on the number of persons accommodated.

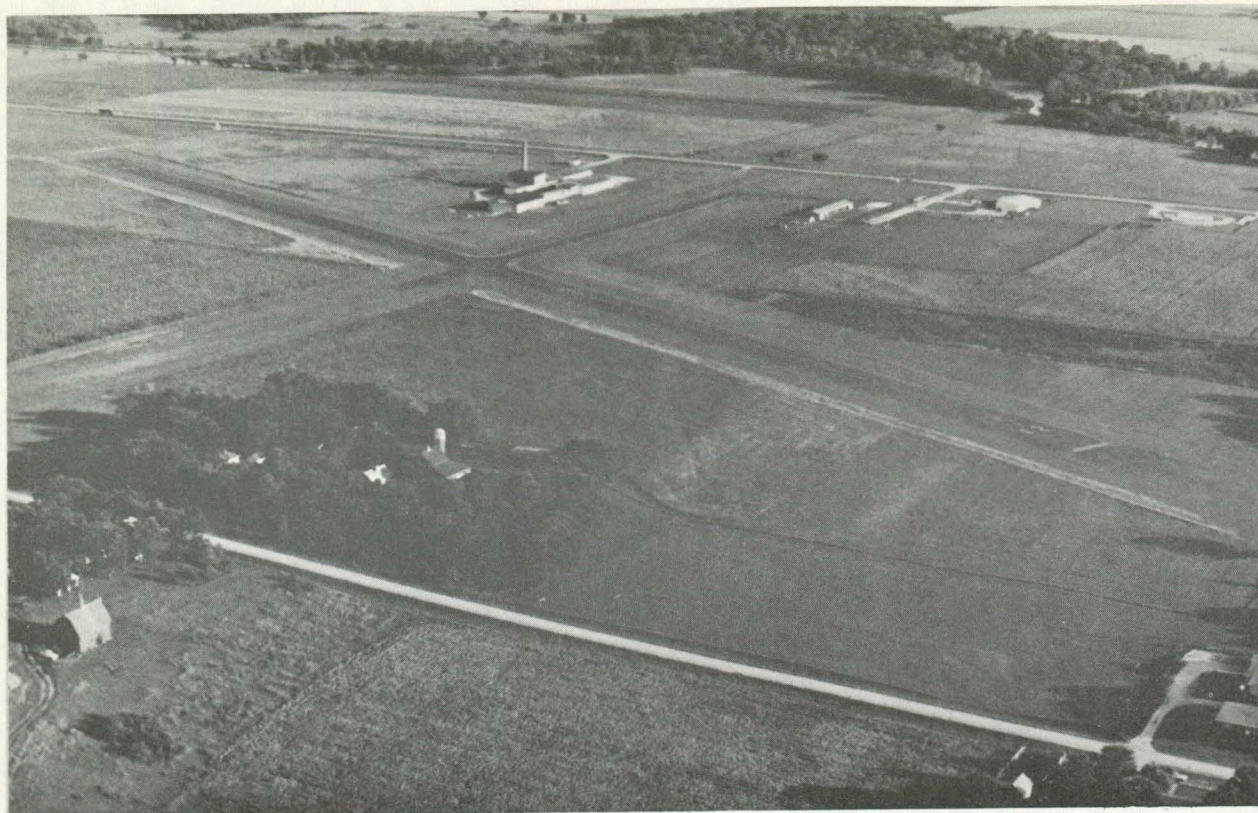
A city official estimates that 110 building lots are available with room for expansion into sub-division developments.

A zoning ordinance, controlled by an active planning and zoning commission, guides development along proper expansion lines.

Housing in Humboldt is in a healthy position, providing the finest livability for all people.







## GOOD TRANSPORTATION FACILITIES

At left: Humboldt Municipal Airport

Humboldt County is bisected by Iowa Highway 3 running east-west and U. S. Highway 169 north and south. These primary highways intersect at the City of Humboldt and provide ready access to the Interstate Systems routes.

Paved secondary road mileage in the county exceeds 100 miles providing surfaced roadway within 3 to 4 miles of any point in the area. Strategically located maintenance shops assure rapid removal of snow and noticeably superior maintenance of roadway relative to adjacent counties. All unpaved roads are well graveled.

Humboldt is regularly served by the Crouse Cartage Company, Pacific Intermountain Express and the Hunt Truck Lines providing one day motor freight delivery from Chicago, Minneapolis, Omaha, Kansas City and St. Louis.

The Chicago and Northwestern Railroad has two divisions intersecting in Humboldt with freight trains operated daily on the Iowa Division, running from Eagle Grove to Hawarden and twice daily freight trains on the M&ST.L. Division, running from Des Moines to Albert Lea, Minnesota.

The area is also served by bus routes and several Parcel Delivery Services.

The City of Humboldt Municipal Airport has a lighted, NW-SE, 3,000 ft. runway and a 2,400 ft. N-S runway both of which were surfaced in 1965.

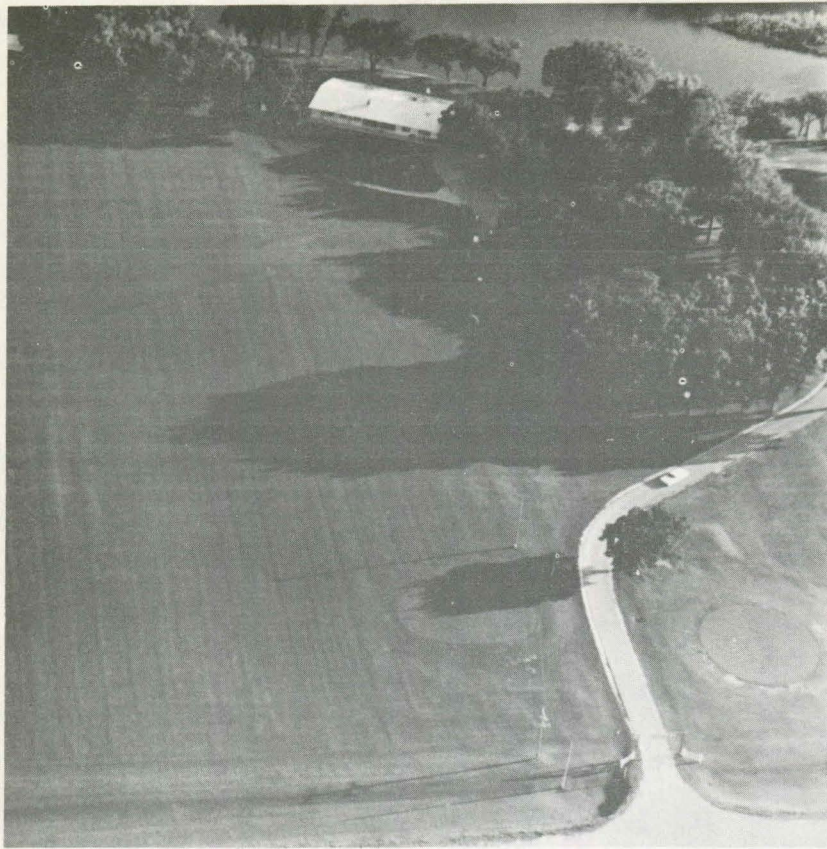
Scheduled Commercial Airlines is provided by the Ozark Airline at the Fort Dodge Airport, a 15 minute drive from Humboldt.



## RECREATION

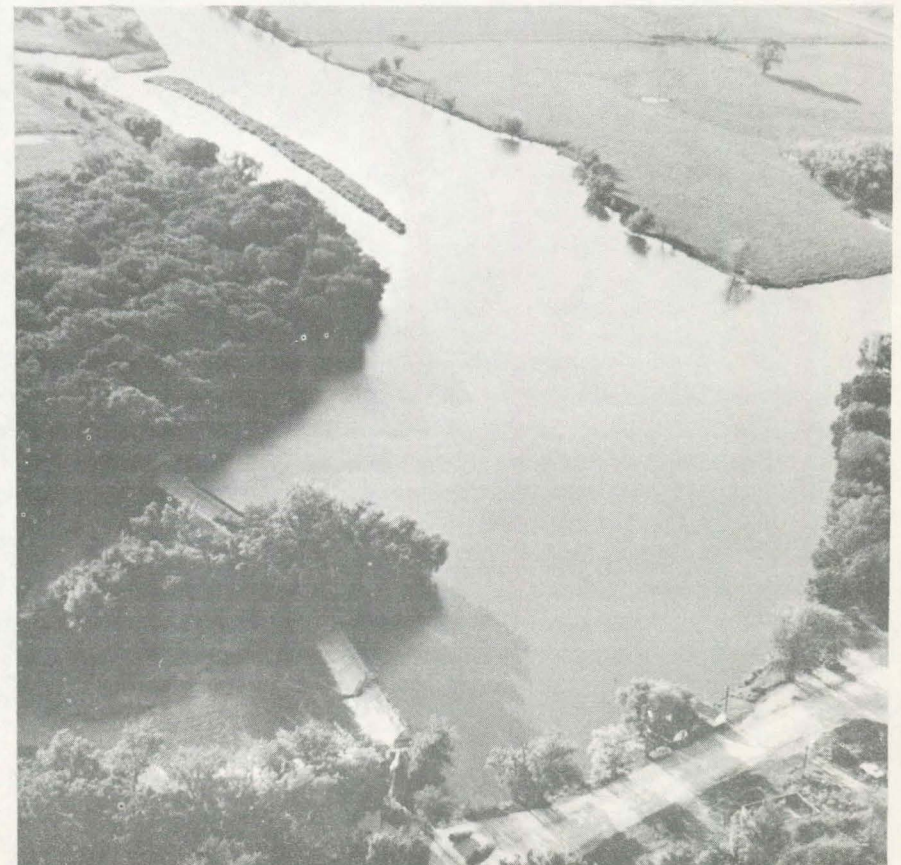
The Des Moines River splits into an East and West Branch in south central Humboldt County. The West Branch travels in a generally northwesterly direction across the County and the East Branch in a northerly direction on the eastern side of the County. The river system provides convenient fishing to all parts of the County with numerous picnic and camping sites, state and locally sponsored parks, deer and small game hunting, swimming, boating, and skating areas on its waters and along its banks.

The City of Humboldt has 22 acres of park area within its corporate limits. Within these parks are found play ground equipment, ball diamonds, ice skating rink, tennis courts, swimming pool, fountains, benches and walks. Additional parks are planned for the near future.

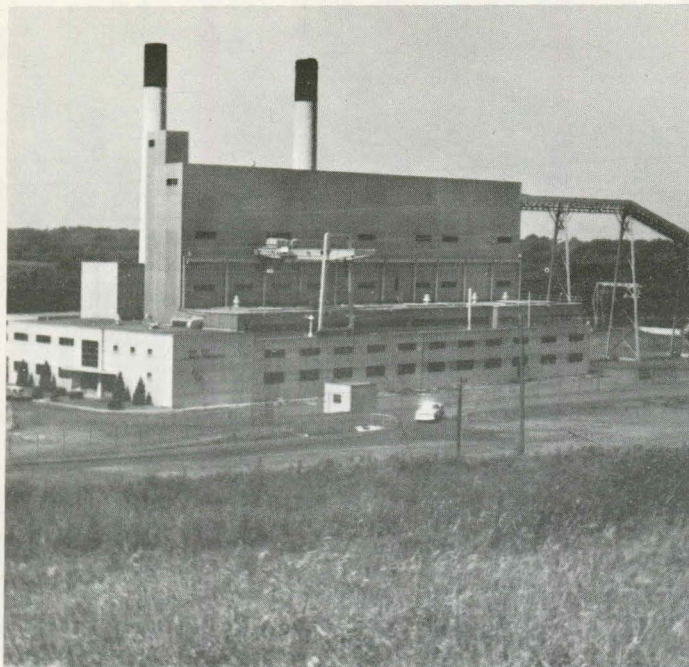


Located one and one-half miles west of Humboldt along the west branch of the Des Moines River is the Humboldt Golf and Country Club. This is a 9 hole course with grass greens and a large new club house along the river. Dues and assessments have averaged less than \$75 per year. Present membership stands at about 175.

A hydroelectric power dam spans the west branch of the Des Moines River on the western boundary of the City of Humboldt. The backwater is called Lake Nakomis and provides deep water for boating and water skiing for a distance of  $2\frac{1}{2}$  miles up river.



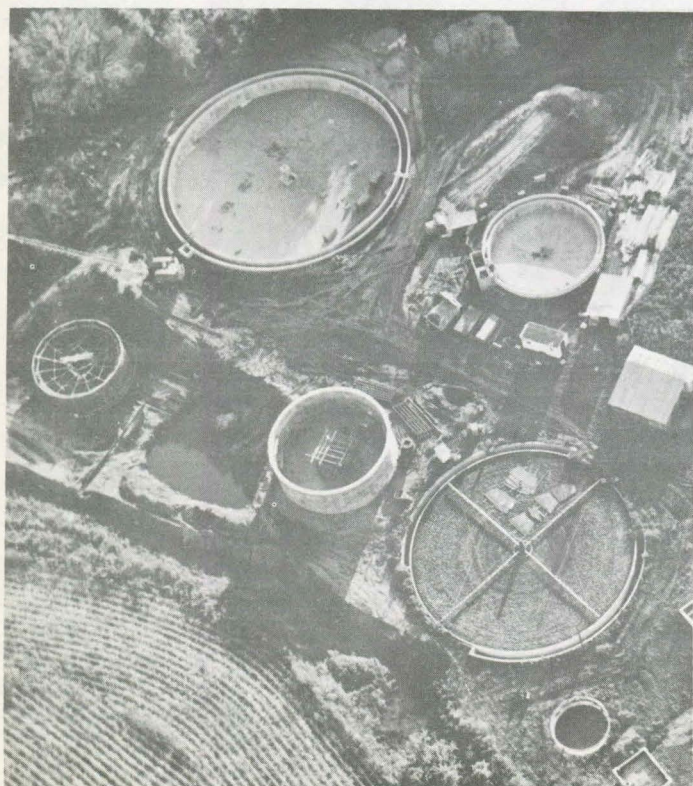




## UTILITIES

Water: The Municipal System of the City of Humboldt is supplied by 3 capped springs having a proven capacity of 1,000 gpm. The maximum capacity of the softening and pumping facilities is 1,200,000 gpd. At present there is approximately 200,000 gpd. surplus capacity available for industrial expansion. The water is softened to a total hardness of 5.5 g.p.g.

Electric (Iowa Public Service Co.): The Iowa Public Service Co. of Sioux City, Iowa provides the electric services to the city of Humboldt and most of the towns in the county. They also distribute natural gas taken from the Northern Natural Gas Co. pipelines in the county.



Electric (Humboldt Co. R.E.C.): Most rural areas of the county are served by the Humboldt County Rural Electrification Cooperative who is supplied by the Corn Belt Power Cooperative. Both organizations have their offices in Humboldt. The Corn Belt Power Cooperative operates a 50,000 K.W. capacity steam generating plant south of Humboldt.

Sanitary Sewer: Treatment Plant facilities of the Municipal System is now being enlarged to accomodate 3 times the current load of the City of Humboldt. The added capacity is expected to adequately handle requirements for many years hence.

Natural Gas: The Northern Natural Gas Company of Omaha, Nebraska delivers gas to the area at approximately 450 psi through an 8" pipeline. The calorific value being 990 BTU per SCF.



# SUMMARY

Humboldt County is an area of fertile farmland, growing industry and progressive people. The farms, the homes, the business enterprises evidence a full measure of quiet pride. A visitor will sense the beauty of the land, the spirit of its people, and soon share the resident's pride. It is a GOOD place to live!

The foregoing pages have touched upon highlights of the area---the churches, schools, transportation facilities, recreation, housing, taxes, business, industry---enough to suggest the vitality and growth of an area in the center of Iowa's bountiful agricultural heartland, and the nation's food basket!

We would like you to know more of our Humboldt County area and its rich promise. May we invite you to learn something more of our friendly and capable people, more of their land, its beauty, and their potential?

Visit us if you can, or, direct your inquiry for additional information to either of the following:

Humboldt-Dakota City Chamber of Commerce -- Humboldt County Development Corporation

Post Office Box 6

Humboldt, Iowa 50548

Post Office Box 6

Humboldt, Iowa 50548



O.P.P. LIBRARY COPY



STATE LIBRARY OF IOWA



3 1723 02109 5633

# SMALLER COMMUNITIES PROGRAM

O.P.P. LIBRARY COPY