



Iowa Department
of Transportation

River Barge Terminal Directory

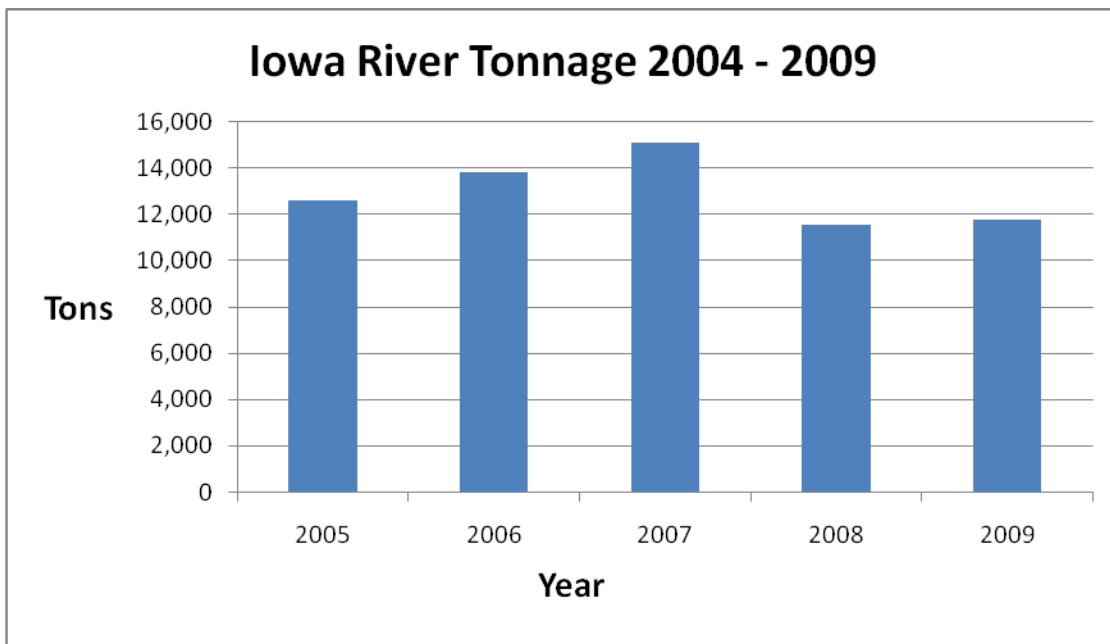
Revised April 2011



Iowa Department of Transportation
Office of Systems Planning
800 Lincoln Way
Ames, IA 50010
Phone: 515-239-1004

Forward

Iowa is unique in that the state is bordered by two navigable rivers, the Mississippi and the Missouri. These two rivers are an economic and environmental resource of enormous proportion. The nearly 500 miles of navigable waterways along Iowa's borders are open most of the year and provide safe, efficient and effective transportation for primarily bulk commodity shipments originating or terminating in the state. These rivers and the terminals along them are a gateway for Iowa to the extensive 12,000 mile inland waterway system that has access to ports throughout the country and ultimately the world. Over 60 percent of the U.S. corn and soybean exports move on the river system through the Gulf ports to foreign markets. From 2004 to 2009 an average of 13 million tons of commodities were shipped to or from the state's river terminals.



There are 60 barge terminals along Iowa's border, 55 on the Mississippi and 5 on the Missouri. The ports, terminals and fleeting areas in Iowa provide jobs and income for their communities and support Iowa industries dependent on the river transport. River transportation and our harbors and terminals are an engine for continued economic growth.

Important Links and contacts for additional information concerning Water Transportation

United States Army Corps of Engineers (USACE)

Mississippi Valley Division-

Phone: 601-634-7110

Web: <http://www.mvd.usace.army.mil/>

Rock Island District -

Phone: 309-794-4200

Web: <http://www.mvr.usace.army.mil/>

St. Paul District -

Phone: 651-290-5200

Web: <http://www.mvp.usace.army.mil/>

St. Louis District -

Phone: 314-331-8068

Web: <http://www.mvs.usace.army.mil/>

Northwest Division-

Phone: 503-808-3700

Web: <http://www.nwd.usace.army.mil/>

Omaha District-

Phone: 888-835-5971

Web: <http://www.nwo.usace.army.mil/>

Navigation Information Center - <http://www2.mvr.usace.army.mil/NIC2/default.cfm>

Navigation Data Center- <http://www.iwr.usace.army.mil/ndc/index.htm>

River Barge Terminal Directory
Rev. April 2011

Index

Missouri River

Facility	Milepost	Page
Cargill	614.3	6
Ag Processing, Inc.	716.6	7
Koch Nitrogen Co. LLC	717.0	8
Jebro, Inc.	727.5	9
Big Soo Terminal.....	728.0	10

Mississippi River

Roquette America Services.....	362.4	11
Roquette America, Inc.....	363.0	12
Hendricks River Logistics, LLC	371.0	13
Hall Towing, Inc.....	382.0	14
Colusa Elevator.....	390.3	15
Alliant Energy - Burlington.....	399.4	16
Matteson Marine Service, Inc.....	403.3	17
Burlington River Terminal, Inc South.....	403.6	18
ADM/ Growmark.....	405.2	19
Burlington River Terminal, Inc North	405.3	20
Matteson River Terminal	406.0	21
Agri Grain Marketing	418.0	22
CHS Inc.....	450.3	23
W.G. Block Company	451.2	24
River Terminal Corp.	451.2	25
Muscatine Power.....	453.0	26
Grain Processing Corp.	453.4	27
K.A. Steel	454.0	28
Cargill AgHorizons.....	454.0	29
Central Iowa Power Coop.	468.0	30
Blackhawk Fleet, Inc.	469.5	31
Cargill Buffalo Terminal	469.8	32
Cargill AgHorizons.....	469.8	33
Upper Mississippi River Fleeting, LLC.....	474.0	34
LaFarge Corporation-Davenport	474.7	35
Linwood Mining & Minerals Corp.....	475.2	36
Texpar Energy LLC.	475.5	37
CHS Inc.....	475.7	38
CHS Inc.....	476.0	39
W.G. Block Company	483.2	40
River/Gulf Grain Company	483.3	41

River Barge Terminal Directory

Rev. April 2011

Facility	Milepost	Page
Continental Cement Company.....	486.8	42
Noble Petro Inc.	487.2	43
Bettendorf Terminal.....	487.5	44
Flint Hills Resources, LP	487.7	45
Riverstone Group Inc.	498.2	46
American River Transportation Co.	512.2	47
Vertex Chemical Corp.	513.9	48
M.L. Kapp Station.....	514.2	49
ADM Corn Processing.....	515.5	50
ADM/Growmark.....	517.2	51
Clinton Municipal Dock.....	518.0	52
ARTCO Fleeting Services	518.0	53
ARTCO Fleeting Services	579.0	54
Dubuque River Terminal	579.4	55
Dubuque Barge & Fleet Service	579.5	56
Cargill AgHorizons.....	580.0	57
Dubuque Power Plant	580.0	58
Flint Hills Resources, LP	580.0	59
Peavey Company	580.0	60
Pattison Sand Company LLC	623.0	61
Pattison Sand Company LLC	624.0	62
Agri-Bunge, LLC.....	633.4	63
ARTCO Fleeting Services	634.0	64
Lansing Power Station	660.3	65

River Barge Terminal Directory
Rev. April 2011

Cargill	River Mile: 614.3
Address: 2401 South 37 th Street Council Bluffs, IA 51501	Phone: 712-325-2701 FAX: 712-325-2730
Contact Person: Mathew Wallace	E-Mail:
Facility Owner: Cargill	
Railroad Service: UP, BNSF, IAIS, and KCS	
Services Provided: Rail Car Storage Capacity: 104 cars Barges Worked Capacity: 3 Barges Stored Capacity: 3 Dry Storage Facilities: 2.2 million bushels	
Major Commodities Handled: Soybeans, yellow corn and white corn	



River Barge Terminal Directory
Rev. April 2011

Ag Processing, Inc.	River Mile: 716.6
Address: 2753 Port Neal Circle Sergeant Bluff, IA 51054	Phone: 712-943-4282
Contact Person: Wayne Johnson	FAX: 712-943-1476
Facility Owner: Ag Processing, Inc.	E-Mail: wjohnson@agp.com
Railroad Service: UP	
Services Provided: Rail Car Storage Capacity: 250 cars Barges Worked Capacity: 1 Barges Stored Capacity: 3 Dry Storage Facilities: 3.5 million bushels Liquid Storage Facilities: 36 million pounds	
Major Commodities Handled: Soybeans and soybean products, and biodiesel	



River Barge Terminal Directory
Rev. April 2011

Koch Nitrogen Co. LLC	River Mile: 717.0
Address: 2735 Port Neal Circle Sergeant Bluff, IA 51054	Phone: 712-943-5684 FAX: 712-943-5625
Contract Person: Bill Johnson	E-Mail: johns27b@kochind.com
Facility Owner: Koch Nitrogen Company	
Railroad Service: UP	
Services Provided: Rail Car Storage Capacity: 55 cars Barges Worked Capacity: 1 Barges Stored Capacity: 3 Dry Storage Facilities: 20,000 tons Liquid Storage Facilities: 20,000 tons	
Major Commodities Handled: Anhydrous ammonia, urea, urea ammonium, and nitrate solution	



River Barge Terminal Directory
Rev. April 2011

Jebro, Inc.	River Mile: 727.5
Address: 2303 Bridgeport Drive Sioux City, IA 51111	Phone: 712-277-8855 FAX: 712-277-8451
Contact Person: Bob Cheever Phone: 712-234-2805	E-Mail: bob.cheever@jebro.com
Facility Owner: Jebro, Inc.	
Railroad Service: UP	
Major Commodities Handled: Asphalt and petroleum products	



River Barge Terminal Directory
Rev. April 2011

Big Soo Terminal	River Mile: 728.0
Address: 4101 Harbor Drive Sioux City, IA 51102	Phone: 712-258-0537 FAX: 712-258-4649
Contact Person: Kevin Knepper	E-Mail: Kevin@BigSoo.com
Facility Owner: Tegra Corporation	Web-site: www.bigsoo.com
Railroad Service: UP	
Services Provided: Rail Car Storage Capacity: 75 cars Barges Worked Capacity: 2 Barges Stored Capacity: 12 Dry Storage Facilities: 120,000 tons Liquid Storage Facilities: 22,000 tons 20 acre lay down yard	
Major Commodities Handled: Dry bulk fertilizer, grain, soybean meal and oil, steel, lumber, road salt, molasses, feed stuffs, and wind energy components with heavy lifts	



River Barge Terminal Directory
Rev. April 2011

Roquette America Services	River Mile: 362.4
Terminal Address: Commercial at "K" Street Keokuk, IA 52632 Office Address: 2301 Twin Rivers Drive, PO Box 967 Keokuk, IA 52632	Terminal Phone: 319-524-5426 FAX: 319-524-2348
Contact Person: Flint Peyton	E-Mail: flint.peyton@roquette.com
Facility Owner: Roquette America	
Railroad Service: BNSF	
Services Provided: Barges Worked Capacity: 2 Barges Stored Capacity: 90 Liquid Storage Facilities: Will build to suit	
Major Commodities Handled: Coal, steel, coke, corn, fertilizer, bales, coils, and pallets	



River Barge Terminal Directory
Rev. April 2011

Roquette America, Inc.	River Mile: 363.0
Address: 1 Progress Street Keokuk, IA 52632	Phone: 319-524-5757 FAX: 319-526-2403
Contact Person: John Mickelson	E-Mail: john.mickelson@roquette.com
Facility Owner: Roquette America, Inc.	
Services Provided: Barges Worked Capacity: 1 Barges Stored Capacity: Unlimited	
Major Commodities Handled: Corn gluten feed	



River Barge Terminal Directory
Rev. April 2011

Hendricks River Logistics, LLC	River Mile: 371.0
Address: 3254 Mississippi River Road Keokuk, IA 52632	Phone: 319-524-6841 FAX: 319-524-6843
Contact Person: Shawn Duer	E-Mail: shawnduer@hughes.net
Facility Owner: Hendricks River Logistics, LLC	
Railroad Service: BNSF	
Services Provided: Rail Car Storage Capacity: 123 Cars Barges Worked Capacity: 1 Barges Stored Capacity: 80 Outside storage 14 acres	
Major Commodities Handled: Coal	



River Barge Terminal Directory
Rev. April 2011

Hall Towing, Inc.	River Mile: 382.0
Address: 1618 20 th Street, PO Box 1465 Fort Madison, IA 52627	Phone: 319-372-3078 FAX: 319-372-1719
Contact Person: Denise or Jay Boyer	E-Mail: halltowing@yahoo.com
Facility Owner: Don F. Hall, President	
Railroad Service: BNSF	
Services Provided: Rail Car Storage Capacity: 60 cars Barges Worked Capacity: 4 Barges Stored Capacity: 60 Dry Storage Facilities: 15,000-ton capacity Liquid Storage Facilities: 1 million gallon capacity	
Major Commodities Handled: Fertilizer, steel, grain, and grain by-products	



River Barge Terminal Directory
Rev. April 2011

Colusa Elevator Company	River Mile: 390.3
Address: 2136 Green Bay Road Wever, IA 52658	Phone: 319-372-7852 FAX: 319-372-7855
Contact Person: Nick Huston	E-Mail: njhuston@colusaelevator.com
Facility Owner: Colusa Elevator Co.	
Services Provided: Barges Worked Capacity: 1 Barges Stored Capacity: 9 Dry Storage Facilities: 3.5 million bushels Truck Barge Transfers	
Major Commodities Handled: Corn, soybeans, and wheat	



River Barge Terminal Directory
Rev. April 2011

Alliant Energy-Burlington Generating Station	River Mile: 399.4
Address: 4282 Sullivan Slough Road Burlington, IA 52601	Phone: 319-758-5301 Cell: 319-759-4382 FAX: 319-754-7386
Contact Person: Buddy Hasten	E-Mail: vernonhasten@alliantenergy.com
Facility Owner: Alliant Energy	
Railroad Service: BNSF	
Services Provided: Rail Car Storage Capacity: 110 cars Barges Worked Capacity: 1 Barges Stored Capacity: 6 Dry Storage Facilities: Ground—outside coal pile	
Major Commodities Handled: Coal	



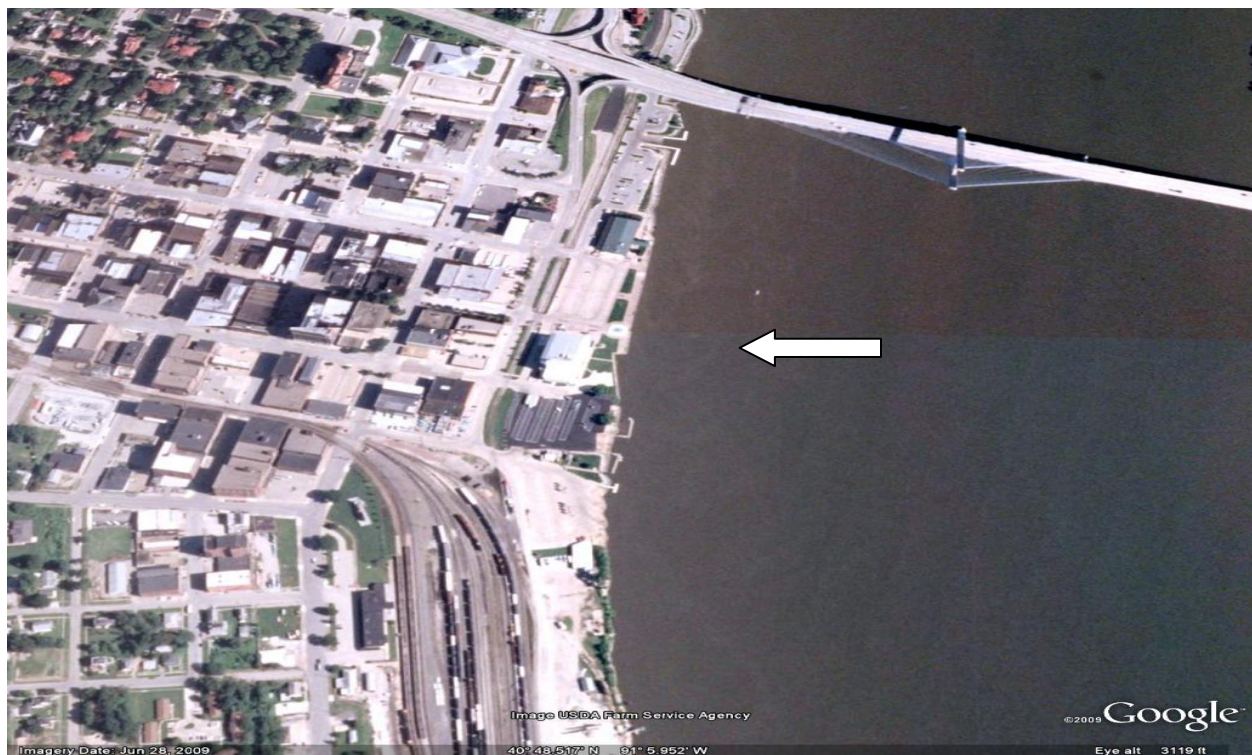
River Barge Terminal Directory
Rev. April 2011

Matteson Marine Service, Inc.	River Mile: 403.3
Terminal Address: BNSF Railway Yards Burlington, IA 52601	Phone: 319-754-5318
Office Address: #1 South Point Burlington, IA 52601	FAX: 319-753-6740
Harbor and Fleet Services: Harbor tugs and cranes	E-Mail: towboats1@msn.com



River Barge Terminal Directory
Rev. April 2011

Burlington River Terminal, Inc. – South	River Mile: 403.6
Terminal Address: 100 South Front Street Burlington, IA 52601 Office Address: 500 Cash Street Burlington, IA 52601	Terminal Phone: 319-752-0017 Office Phone: 319-753-6533 FAX: 319-753-2156
Contact Person: Roger Lindner	E-Mail: RogerL@Merschmanseeds.com
Facility Owner: Norsk Hydro Americas, Inc.	
Railroad Service: BNSF	
Services Provided: Rail Car Storage Capacity: Unit trains Barges Worked Capacity: 1 Barges Stored Capacity: 1 Dry Storage Facilities: 120-feet x 504-feet	
Major Commodities Handled: General commodities including, road salt, gypsum rock, coal, and fertilizer	



River Barge Terminal Directory
Rev. April 2011

ADM/Growmark	River Mile: 405.2
Address: P.O. Box 1085 Burlington, IA 52601	Phone: 319-753-2857
Contact Person: Tom Parchert	E-Mail: tom_parchert@admworld.com
Railroad Service: BNSF	
Services Provided: Rail Car Storage Capacity: 54 cars Dry Storage Facilities: 540,000 bushels	
Major Commodities Handled: Corn, beans, and wheat	



River Barge Terminal Directory
Rev. April 2011

Burlington River Terminal, Inc. – North	River Mile: 405.3
Address: 500 Cash Street Burlington, IA 52601	Phone: 319-753-6533 FAX: 319-753-2156
Contact Person: Roger Lindner	E-Mail: RogerL@Merschmanseeds.com
Facility Owner: Merschman Fertilizer, LLC.	
Railroad Service: BJRY (to BNSF)	
Services Provided: Rail Car Storage Capacity: 25 cars Barges Worked Capacity: 1 Dry Storage Facilities: 50,000 short tons Liquid Storage Facilities: 20,000 short tons	
Major Commodities Handled: Dry bulk and liquid fertilizers	



River Barge Terminal Directory
Rev. April 2011

Matteson River Terminal	River Mile: 406.0
Terminal Address: 2815 91 st Avenue Burlington, IA 52601 Office Address: #1 S. Point, PO Box 667 Burlington, IA 52601	Phone: 319-754-6705 FAX: 319-753-6740
Contact Person: Larry Matteson	E-Mail: dredge@lwmatteson.com
Facility Owner: L.W. Matteson, Inc.	
Services Provided: Barges Worked Capacity: 3 Barges Stored Capacity: 200 Dry Storage Facilities: 6 acres—open, dry storage	
Major Commodities Handled: Steel and precast concrete	



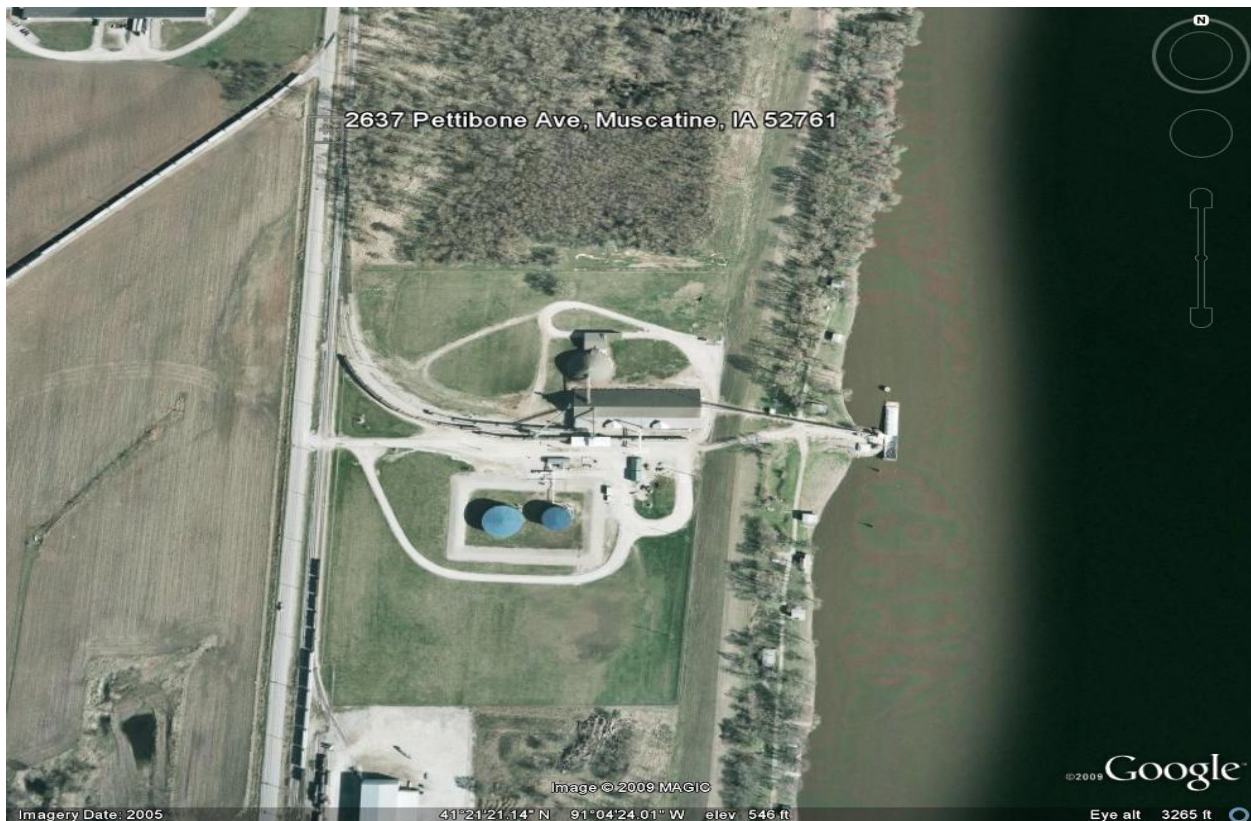
River Barge Terminal Directory
Rev. April 2011

AGRI Grain Marketing	River Mile: 418.0
Address: 1477 Meeker's Landing Road Burlington, IA 52601	Phone: 800-292-1233 FAX: 319-937-6995
Contact Person: David Dolan	E-Mail:
Facility Owner: Agri-Bunge, LLC	
Services Provided: Dry Storage Facilities: 600,000 bushels	
Major Commodities Handled: Corn and soybeans	



River Barge Terminal Directory
Rev. April 2011

CHS Inc.	River Mile: 450.3
Address: 2637 Pettibone Avenue Muscatine, IA 52761	Phone: 563-264-1721 FAX: 563-264-8171
Contact Person: Brian Rankin	E-Mail: brian.rankin@chsinc.com
Facility Owner: Agriliance, LLC	
Railroad Service: DME	
Services Provided: Rail Car Storage Capacity: 35 cars Barges Worked Capacity: 1 Barges Stored Capacity: 3 Dry Storage Facilities: 25,000-ton A-frame; 8,000-ton dome Liquid Storage Facilities: 15,000 tons (3 million gallons)	
Major Commodities Handled: Diamonium phosphate, monoamonium phosphate, urea, potassium chloride and UAN	



River Barge Terminal Directory
Rev. April 2011

W.G. Block Company	River Mile: 451.2
Address: 2544 Pettibone Avenue Muscatine, IA 52761	Phone: 563-263-1105 FAX: 563-263-5441
Contact Person: Gary Thumann	E-Mail:
Facility Owner: W.G. Block Company	
Services Provided: Barges Worked Capacity: 1 Dry Storage Facilities: Outside stockpiles	
Major Commodities Handled: Sand	



River Barge Terminal Directory
Rev. April 2011

River Terminal Corp.	River Mile: 451.2
Address: 2579 Pettibone Avenue, PO Box 1515 Muscatine, IA 52761	Phone: 563-263-3155 FAX: 563-263-3159
Facility Owner/Contact Person: James R. Melson	E-Mail:
Railroad Service: DME	
Services Provided: Rail Car Storage Capacity: 50 cars Barges Worked Capacity: 2 Barges Stored Capacity: 3 Dry Storage Facilities: 3,000 tons Liquid Storage Facilities: 6 million gallons	
Major Commodities Handled: Liquid fertilizer, molasses, and lignin	



River Barge Terminal Directory
Rev. April 2011

Muscatine Power & Water Generation Station	River Mile: 453.0
Terminal Address: 1700 Dick Drake Way Muscatine, IA 52761 Office Address: 3205 Cedar Street Muscatine, IA 52761	Terminal Phone: 563-262-3549 Office Phone: 563-263-2631 FAX: 563-262-3524
Contact Person: Scott Clester or Bill Schoenig	E-Mail: sclester@mpw.org bschoenig@mpw.org
Facility Owner: City of Muscatine	
Railroad Service: DME	
Services Provided: Rail Car Storage Capacity: 120 cars Barges Worked Capacity: 2 Barges Stored Capacity: 10 Dry Storage Facilities: 4,000-ton silo; 1,000-ton silo for coal	
Major Commodities Handled: Coal	



River Barge Terminal Directory
Rev. April 2011

Grain Processing Corporation	River Mile: 453.4
Address: 1600 Oregon Street Muscatine, IA 52761	Phone: 563-264-4254 FAX: 563-264-4860
Contact Person: Jeffrey Stone	E-Mail:
Facility Owner: Muscatine Foods Corporation	
Railroad Service: DME	
Services Provided: Barges Worked Capacity: 1 Barges Stored Capacity: 2	
Major Commodities Handled: Corn	



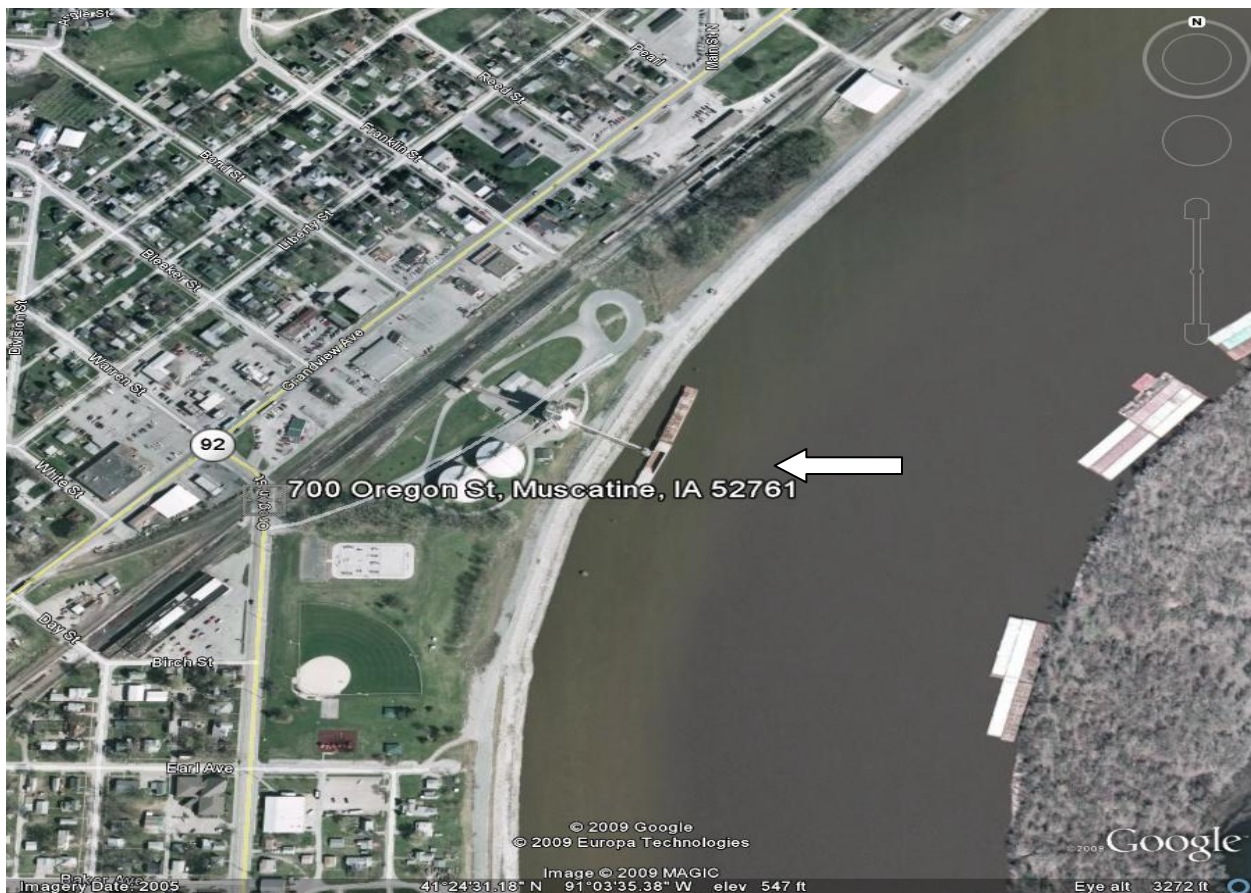
River Barge Terminal Directory
Rev. April 2011

K.A. Steel	River Mile: 454.0
Terminal Address: 2581 Pettibone Avenue Muscatine, IA 52761 Office Address: 240 Mack Lane Mediapolis, IA 52637	Terminal Phone: 319-394-3441 Office Phone: 800-596-8265 FAX: 319-394-9410
Contact Person: Lynn Long	E-Mail:
Facility Owner: K.A. Steel	
Railroad Service: DME	
Services Provided: Rail Car Storage Capacity: 8 cars Barges Worked Capacity: 1 Barges Stored Capacity: 1 Liquid Storage Facilities: 1.5 million gallons	
Major Commodities Handled: Sodium hydroxide	



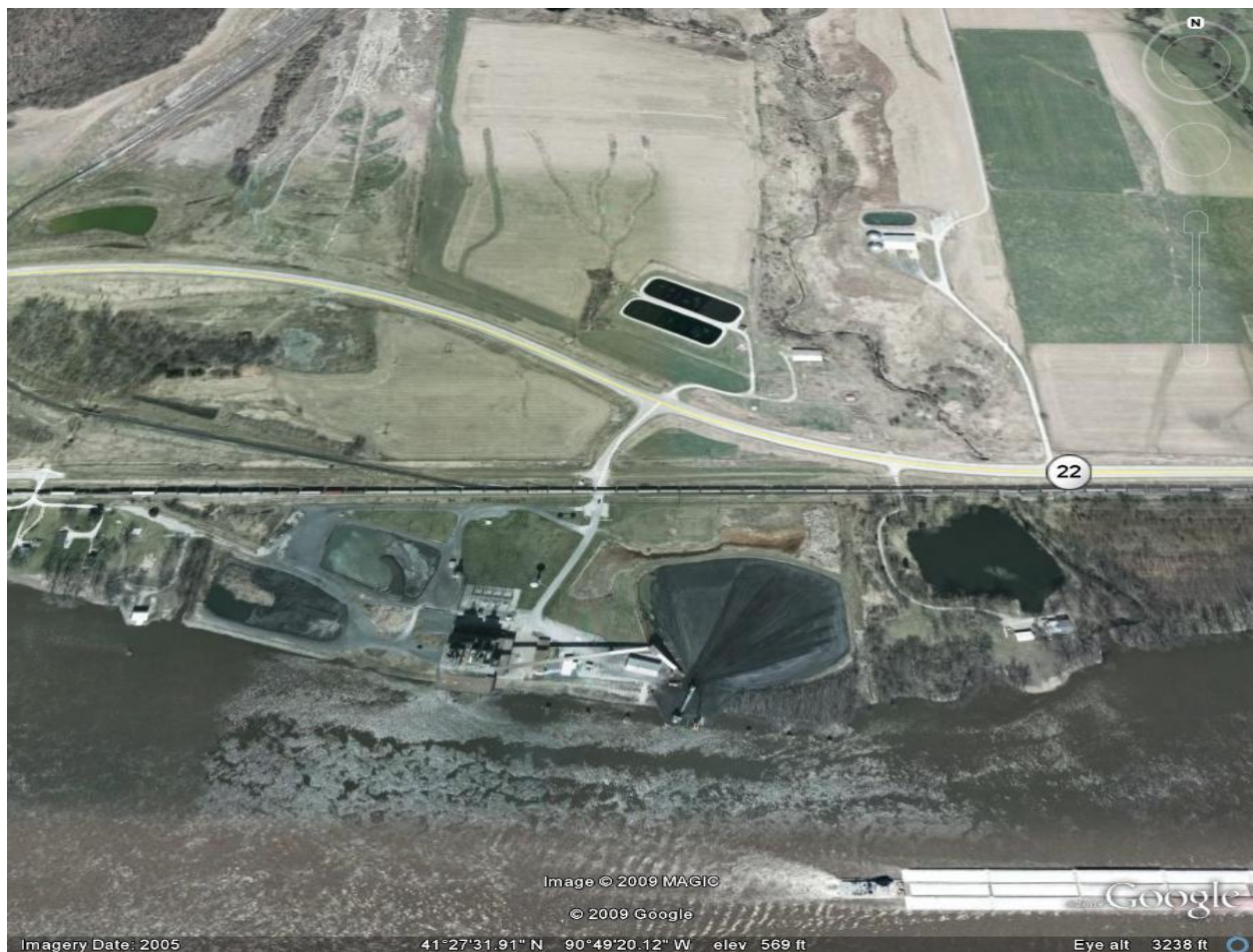
River Barge Terminal Directory
Rev. April 2011

Cargill AgHorizons	River Mile: 454.0
Address: 700 Oregon Street Muscatine, IA 52761	Phone: 563-263-3556 FAX: 563-263-3557
Contact Person: Timothy Bly	E-Mail: timothy_bly@cargill.com
Facility Owner: Cargill Ag Horizons	
Railroad Service: DME	
Services Provided: Rail Car Storage Capacity: 25 cars Barges Worked Capacity: 1 Barges Stored Capacity: 1 Dry Storage Facilities: 1.2 million bushels	
Major Commodities Handled: Corn and soybeans	



River Barge Terminal Directory
Rev. April 2011

Central Iowa Power Cooperative—Fair Station	River Mile: 468.0
Address: 3800 Highway 22 Muscatine, IA 52761	Phone: 319-381-2062 FAX: 319-381-1665
Contact Person: G.W. Jones	
Services Provided: Barges Worked Capacity: 1 Barges Stored Capacity: 2 Dry Storage Facilities: 150 thousand tons	
Major Commodities Handled: Coal	



River Barge Terminal Directory
Rev. April 2011

Blackhawk Fleet, Inc.	River Mile: 469.5
Terminal Address: 1661 West Front Street Buffalo, IA 52728 Office Address: 10910 South Utah Avenue Davenport, IA 52802	Phone: 563-344-5221 FAX: 563-381-4352
Contact Person: Jerry McCray	E-Mail: jerrym@blackhawkfleet.com
Facility Owner: Blackhawk Fleet, Inc.	
Railroad Service: DME	
Services Provided: Fleeting and Harbor services Barges Worked Capacity: 1 Barges Stored Capacity: 2 Dry Storage Facilities: 9 acres—uncovered, improved storage	
Major Commodities Handled: Coal and other commodities	



River Barge Terminal Directory
Rev. April 2011

Cargill Buffalo Terminal	River Mile: 469.8
Address: 1657 West Front Street Buffalo, IA 52728	Phone: 563-381-2210 FAX: 563-381-2699
Contact Person: Greg Meyer	
Facility Owner: Cargill, Inc.	
Railroad Service: DME	
Services Provided: Rail Car Storage Capacity: 15 cars Barges Worked Capacity: 1 Barges Stored Capacity: 1 Dry Storage Facilities: 40,000 tons Liquid Storage Facilities: 5 million gallons	
Major Commodities Handled: Soybean oil, industrial and road salt	



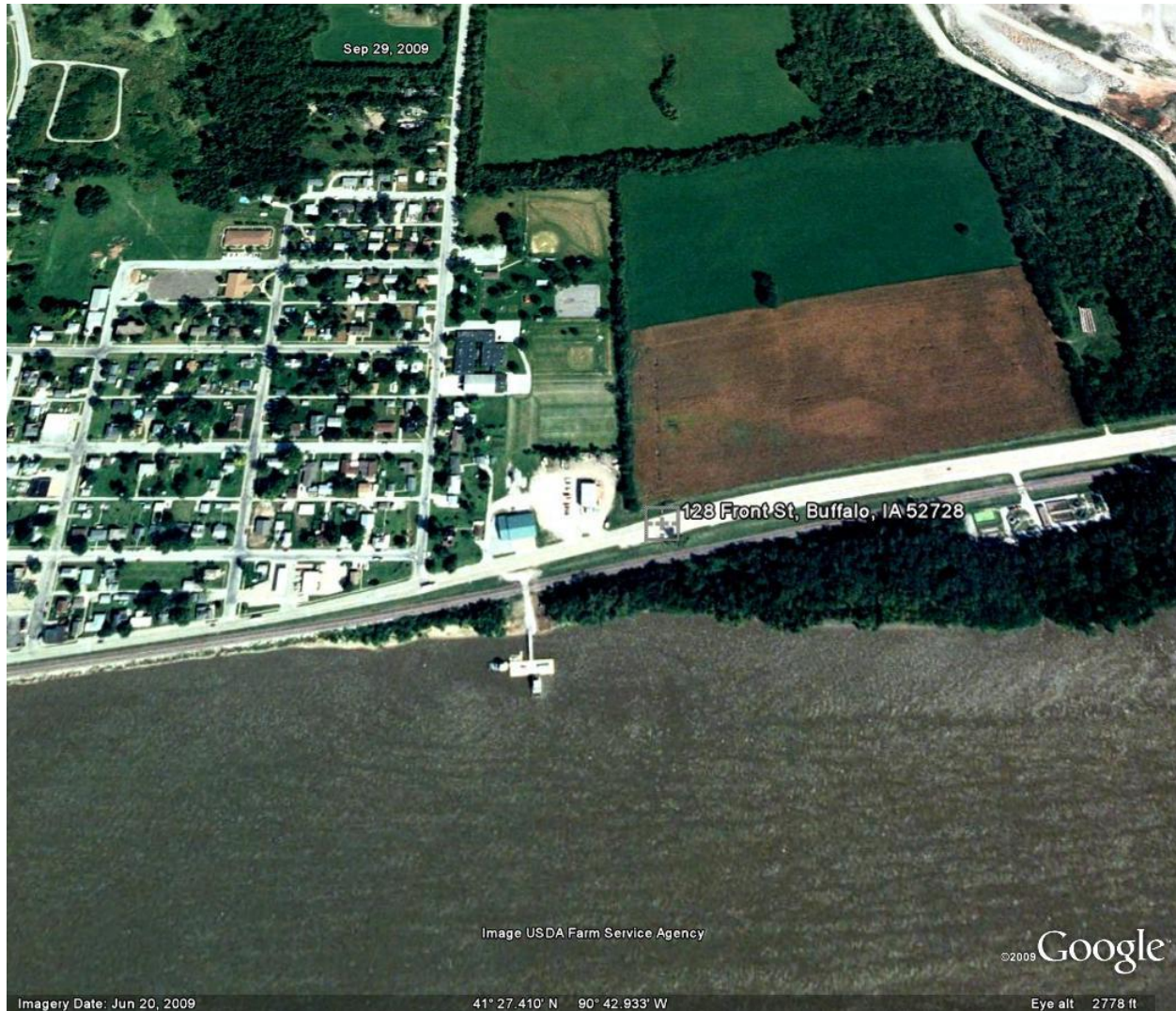
River Barge Terminal Directory
Rev. April 2011

Cargill AgHorizons	River Mile: 469.8
Address: 1657 West Front Street Buffalo, IA 52728	Phone: 319-381-1788 FAX: 319-381-4018
Contact Person: Tim Bey	E-Mail
Facility Owner: Cargill, Inc.	
Railroad Service: DME	
Services Provided: Rail Car Storage Capacity: 30 cars Barges Worked Capacity: 1 Barges Stored Capacity: 1 Dry Storage Facilities: 900,000 bushels	
Major Commodities Handled: Soybeans and yellow corn	



River Barge Terminal Directory
Rev. April 2011

Upper Mississippi River Fleeting, LLC	River Mile:474
Address: 128 Front Street Buffalo, IA 52728	Phone: 563-381-4990 Cell: 563-210-1405 FAX: 563-381-9889
Contact Person: Walt Bassow	E-Mail: waltbassow@qwestoffice.net
Facility Owner: Upper Mississippi Fleeting, LLC	
Services Provided: Fleeting, tow work, switching, cleaning, repairs, and salvage	



River Barge Terminal Directory
Rev. April 2011

LaFarge Corporation Davenport Plant	River Mile: 474.7
Address: 301 Front Street Buffalo, IA 52728 Office: P.O. Box 690, Buffalo, IA 52728	Phone: 563-328-6204 FAX: 563-328-6259
Contact Person: Peter Gay	E-Mail: peter.gay@lafarge.com
Facility Owner: LaFarge North America	
Railroad Service: DME	
Services Provided: Rail Car Storage Capacity: 130 cars Barges Worked Capacity: 2 Dry Storage Facilities: 173,400 tons in silos, plus outside	
Major Commodities Handled: Cement, coal, coke, fly ash, clay, slag, and clinker	



River Barge Terminal Directory
Rev. April 2011

<p>Linwood Mining & Minerals Corp.</p>	<p>River Mile: 475.2</p>
<p>Terminal Address: 401 East Front Street Davenport, IA 52804</p> <p>Office: 5401 Victoria Avenue Davenport, IA 52807</p>	<p>Terminal Phone: 563-324-1931</p> <p>Office Phone: 563-359-8251</p> <p>FAX: 563-344-3730</p>
<p>Contact Person: Jim Petersen</p>	<p>E-Mail: jm_petersen@linwoodmining.com</p>
<p>Facility Owner: Linwood Mining & Minerals Corp</p>	
<p>Railroad Service: DME</p>	
<p>Major Commodities Handled: Stone, coal, coke, and calcium carbonate</p>	



River Barge Terminal Directory
Rev. April 2011

Texpar Energy LLC	River Mile: 475.5
Address: 601 East Front Street Davenport, IA 52804	Phone: 563-324-1931 FAX: 563-324-4110
Contact Person: Chris Sweatman	E-Mail: csweatman@texpar.com
Facility Owner: Texpar Energy LLC	
Railroad Service: DME	
Services Provided: Rail Car Storage Capacity: 10 cars Barges Worked Capacity: 2 Barges Stored Capacity: 4 Liquid Storage Facilities: 13 million gallons	
Major Commodities Handled: Liquid asphalt	



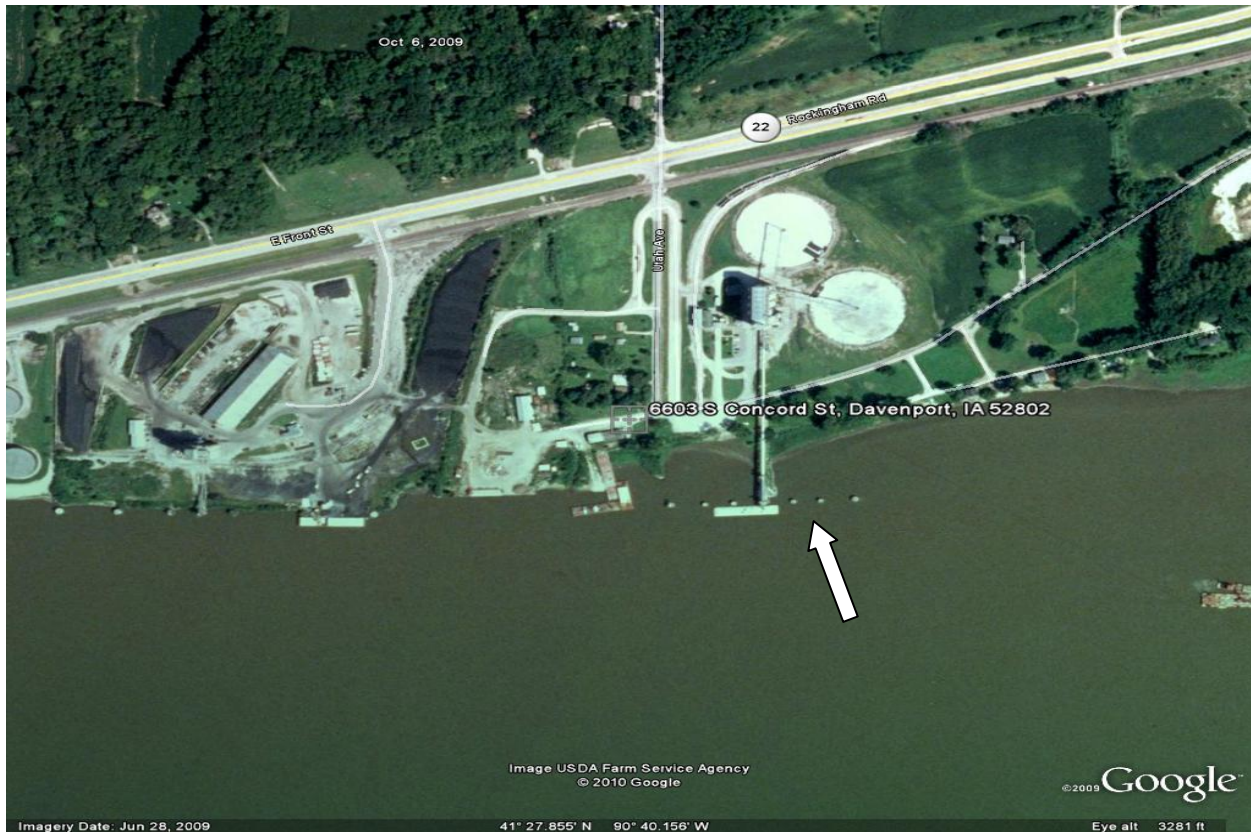
River Barge Terminal Directory
Rev. April 2011

CHS Inc.	River Mile: 475.7
Address: Highway 22 West, PO Box 4549 Davenport, IA 52804	Phone: 319-326-3581 FAX: 319-326-9188
Contact Person: Mike Duncan	E-Mail: mduncan@chsinc.com
Facility Owner: CHS Inc.	
Railroad Service: DME	
Services Provided: Rail Car Storage Capacity: 35 cars Barges Worked Capacity: 2 Barges Stored Capacity: 3 Dry Storage Facilities: Covered and pad storage available	
Major Commodities Handled: Coal, salt, iron ore, alloys, steel, coke, fertilizer, aggregates, corn, and soybeans	



River Barge Terminal Directory
Rev. April 2011

CHS Inc.	River Mile: 476.0
Terminal Address: 6603 South Concord Davenport, IA 52802 Office Address: PO Box 4549 Davenport, IA 52808	Phone: 319-326-3581 FAX: 319-326-9188
Contact Person: Mike Duncan	E-Mail: mduncan@chsinc.com
Facility Owner: CHS Inc.	
Railroad Service: DME	
Services Provided: Rail Car Storage Capacity: 25 cars Barges Worked Capacity: 1 Barges Stored Capacity: 2	
Major Commodities Handled: Corn and soybeans	



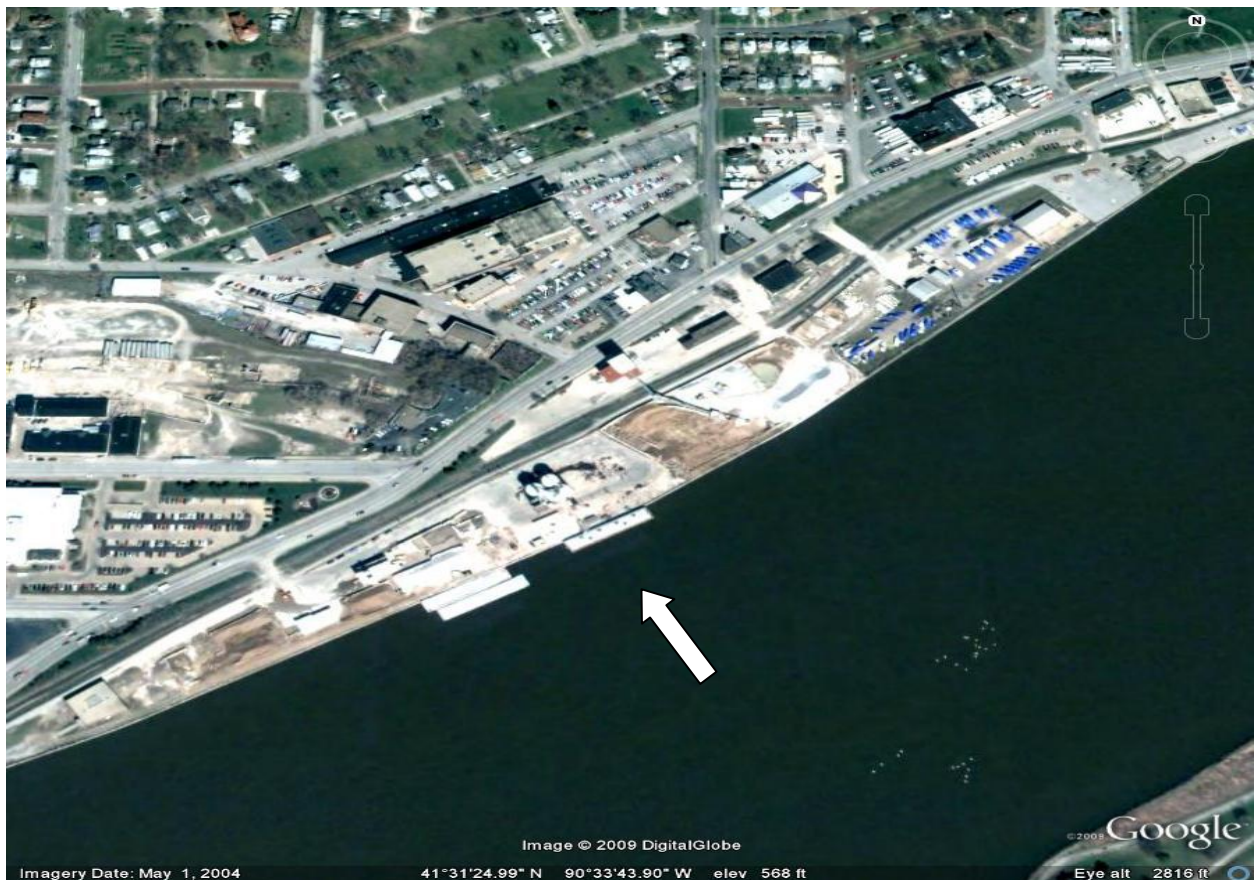
River Barge Terminal Directory
Rev. April 2011

W.G. Block Company	River Mile: 483.2
Terminal Address: 915 East River Drive Davenport, IA 52801	Phone: 563-884-4117
Office Address: PO Box 280, Bettendorf, IA 52722	Office Phone: 563-823-2080
Contact Person: Brian Jackson	FAX: 563-884-4037
Facility Owner: W.G. Block Company	E-Mail: terps@wgblock.com
Major Commodities Handled: Sand and gravel	



River Barge Terminal Directory
Rev. April 2011

River/Gulf Grain Company	River Mile: 483.3
Terminal Address: 725 East River Drive Davenport, IA 52808 Office Address: 2117 State Street Bettendorf, IA 52722	Terminal Phone: 319-324-2114 Office Phone: 319-344-5178 FAX: 319-344-5188
Contact Person: Erol Melik	E-Mail: www.rivergulf.com
Facility Owner: River/Gulf Grain Company	
Services Provided: Barges Worked Capacity: 1 Barges Stored Capacity: 2 Dry Storage Facilities: 150,000 bushels	
Major Commodities Handled: Corn and soybeans	



River Barge Terminal Directory
Rev. April 2011

Continental Cement Co.	River Mile: 486.8
Address: 2871 Depot Street Bettendorf, IA 52722	Phone: 563-359-8237 FAX: 563-359-7336
Contact Person: Dan Lefever	E-Mail
Facility Owner: Continental Cement Co., LLC	
Services Provided: Barges Worked Capacity: 1 Barges Stored Capacity: 2 Dry Storage Facilities: 10,000 tons	
Major Commodities Handled: Cement	



River Barge Terminal Directory
Rev. April 2011

Noble Petro Inc.	River Mile: 487.2
Address: 2925 Depot Street Bettendorf, IA 52722	Phone: 563-355-2654 FAX: 563-355-2655
Contact Person: Rick Jensen	
Facility Owner: Noble Petro Inc.	
Services Provided: Barges Worked Capacity: 4 Barges Stored Capacity: 6 Liquid Storage Facilities: 575,000 barrels	
Major Commodities Handled: No. 2 diesel (ULSD), No. 1diesel (ULSD), unleaded gasoline, and gasohol	



River Barge Terminal Directory
Rev. April 2011

Bettendorf Terminal	River Mile: 487.5
Terminal Address: 3623 Elm Street Bettendorf, IA 52722	Terminal Phone: 319-355-6223
Office Address: 1701 5 th Avenue Moline, IL 61265	Office Phone: 309-757-8250
Contact Person: Adam Smith	FAX: 309-757-8275
Facility Owner: River Stone Group Inc.	E-Mail
Major Commodities Handled: Sand and bulk materials	



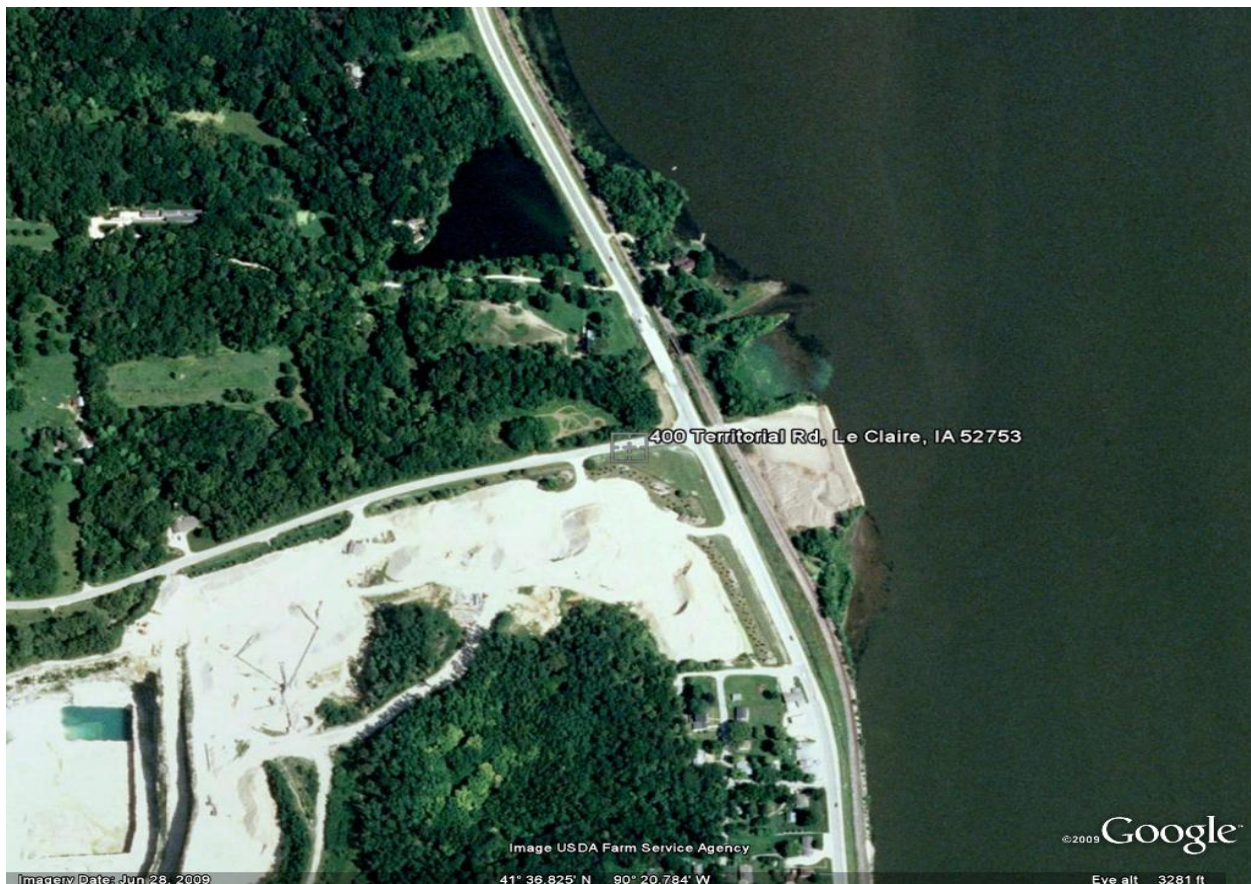
River Barge Terminal Directory
Rev. April 2011

Flint Hills Resources, LP	River Mile: 487.7
Address: 4100 Elm Street Bettendorf, IA 52722	Phone: 563-359-1304 FAX: 563-359-3139
Contact Person: Rick Sherman	E-Mail:
Facility Owner: Flint Hills Resources, LP	
Services Provided: Barges Worked Capacity: 1 Barges Stored Capacity: 2 Liquid Storage Facilities: 150,000 barrels	
Major Commodities Handled: Petroleum products	



River Barge Terminal Directory
Rev. April 2011

Riverstone Group Inc.	River Mile: 498.2
Terminal Address: 400 Territorial Road Le Claire, IA 52753 Office Address: 1701 5 th Avenue Moline, IL 62165	Phone: 319-289-4214 Office Phone: 309-757-8250 FAX: 319-289-3053
Contact Person: Adam Smith	E-Mail: stone@riverstonegrp.com
Facility Owner: Riverstone Group Inc.	
Services Provided: Barges Worked Capacity: 2 Barges Stored Capacity: 2 Dry Storage Facilities: 40,000 tons	
Major Commodities Handled: Aggregates	



River Barge Terminal Directory
Rev. April 2011

American River Transportation Company	River Mile: 512.2
Address: 1419 North Washington Boulevard Camanche, IA 52730-1195	Phone: 563-259-2474 Fax: 563-259-8243
Contact Person: Jeremy Potts 563-321-9092 Scott Kipping 563-321-9091	E-Mail: scott.kipping@adm.com
Facility Owner: American River Transportation Company / ADM Transportation	
Railroad Service: BNSF, DME and UP	
Services Provided: Rail Car Storage Capacity: 155 Barges Worked Capacity: 2 Barges Stored Capacity: 30 Dry Storage Facilities: 166,000 square feet/60-acres open	
Major Commodities Handled: Coal, steel, scrap, pig iron, salt, Scotts fertilizer, pipes, dry bulk, general cargo, and heavy lift capacity	



River Barge Terminal Directory
Rev. April 2011

Vertex Chemical Corporation	River Mile: 513.9
Terminal Address: 2619 Camanche Industrial Park Drive Camanche, IA 52730	Phone: 563-243-2000
Office Address: 1165 Manchester Road, St. Louis, MO 63131	Office Phone: 314-471-0500
Contact Person: Tom Magrecki	FAX: 563-242-5192
Facility Owner: Vertex Chemical Corporation	E-Mail: tmagrecki@vertexchem.com
Railroad Service: BNSF, UP and DME	
Services Provided: Rail Car Storage Capacity: 40 Barges Worked Capacity: 1 Barges Stored Capacity: 4-6 Liquid Storage Facilities: 76,000 barrels	
Major Commodities Handled: Sodium hydroxide	



River Barge Terminal Directory
Rev. April 2011

M.L. Kapp Station	River Mile: 514.2
Address: 2001 Beaver Channel Parkway Clinton, IA 52732	Phone: 563-241-1538 FAX: 563-241-1505
Contact Person: Mark Ohnemus	E-Mail: markohnemus@alliantenergy.com
Facility Owner: Alliant Energy	
Railroad Service: DME	
Services Provided: Barges Worked Capacity: 1 Barges Stored Capacity: 5 Dry Storage Facilities: 310,000 tons	
Major Commodities Handled: Coal	



River Barge Terminal Directory
Rev. April 2011

ADM Corn Processing	River Mile: 515.5
Address: 1251 Beaver Channel Parkway Clinton, IA 52732	Phone: 563-242-1121 FAX: 563-244-5232
Contact Person: James Woll	E-Mail:
Facility Owner: Archer Daniels Midland Co.	
Railroad Service: UP, BNSF and DME	
Major Commodities Handled: Gluten feed, denatured alcohol, and corn oil	



River Barge Terminal Directory
Rev. April 2011

ADM/Growmark	River Mile: 517.2
Address: 1811 South 4 th Street Clinton, IA 52732	Phone: 563-242-5251 FAX: 563-242-9007
Contact Person: Jim Veenstra	E-Mail:
Facility Owner: ADM/Growmark	
Services Provided: Barges Worked Capacity: 1 Barges Stored Capacity: 2 Dry Storage Facilities: 730,000 bushels	
Major Commodities Handled: Corn and soybeans	



River Barge Terminal Directory
Rev. April 2011

Clinton Municipal Dock	River Mile: 518.0
Address: 204 15 th Avenue South Clinton, IA 52732	Phone: 563-242-0962 FAX: 563-243-6673
Contact Person: Bill White	
Railroad Service: UP, DME and BNSF	
Services Provided: Rail Car Storage Capacity: 95 cars Barges Worked Capacity: 3 Barges Stored Capacity: 3 Dry Storage Facilities: 68,000 tons	
Major Commodities Handled: Urea, GTSP, potash, fertilizers, processed grains, vegetable oils, salt, and magnesium oxide	



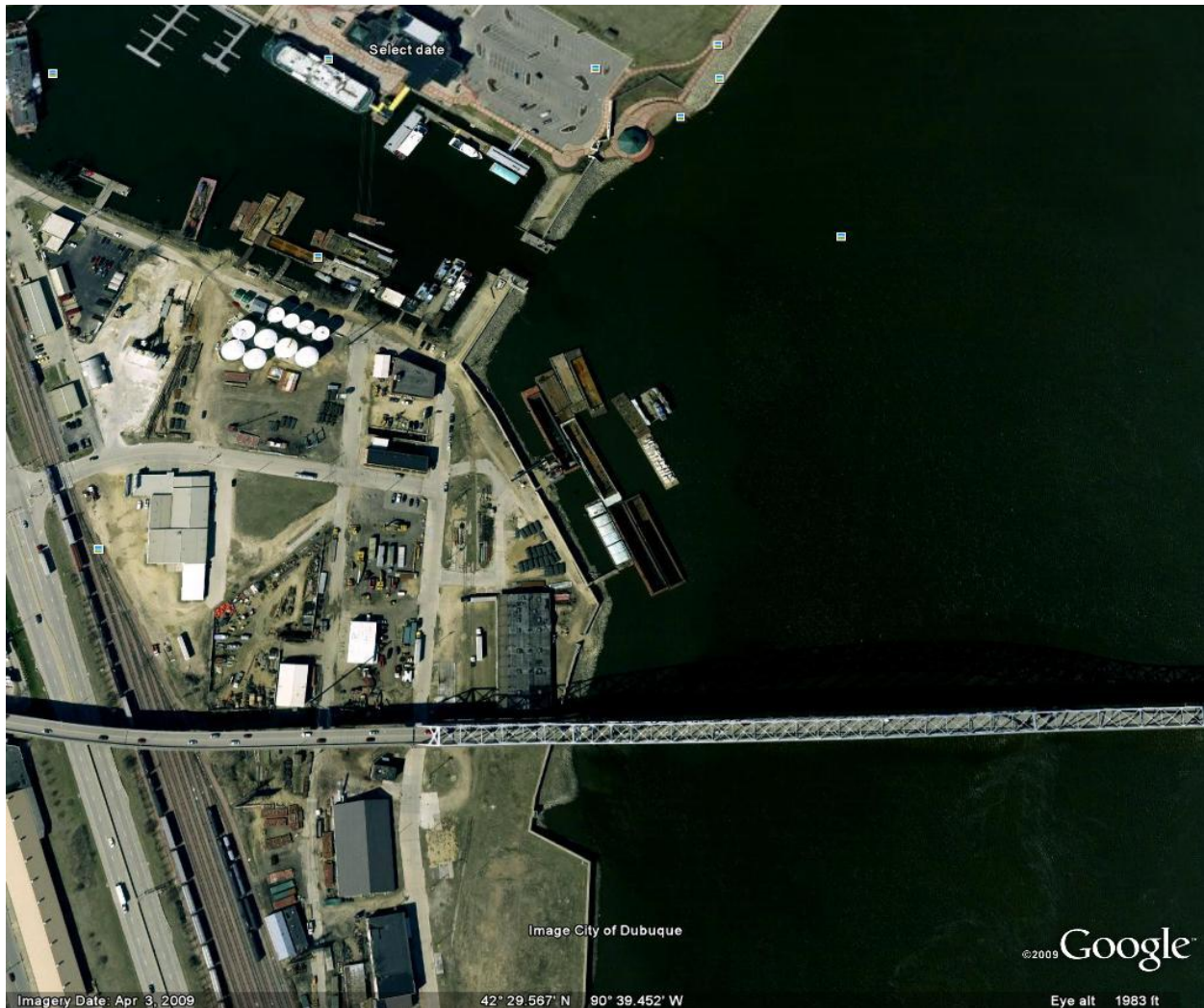
River Barge Terminal Directory
Rev. April 2011

ARTCO Fleeting Services	River Mile: 518.0
Address: 204 15 th Avenue South Clinton, IA 52732	Phone: 563-242-6073 FAX: 563-243-6773
Contact Person: Bill White	E-mail: Ron.white@adm.com
Facility Owner: ARTCO	
Railroad Service: UP and DME	
Services Provided: Fleet and Harbor	



River Barge Terminal Directory
Rev. April 2011

ARTCO Fleeting Services	River Mile: 579.0
Terminal Address: Dubuque, IA Office Address: PO Box 585, Cassville, WI 53806	Terminal Phone: 563-590-6393 Office Phone: 608-725-2311 FAX: 608-725-5044
Contact Person: Ronald White	E-mail ron.white@adm.com
Facility Owner: American River Transportation Co.	E-Mail: artco@pcii.net
Services Provided: Fleet and Harbor	



River Barge Terminal Directory
Rev. April 2011

Dubuque River Terminal	River Mile: 579.4
Address: 5 Jones Street Dubuque, IA 52001	Phone: 563-588-4641 FAX: 563-588-4371
Contact Person: Jim Strief, Sheila McCarty, or Carter Newt	E-Mail: smccarty@newtmarine.com
Facility Owner: Gary W. Newt	
Railroad Service: CN, BNSF	
Services Provided: Rail Car Storage Capacity: 15 cars Barges Worked Capacity: 2 Barges Stored Capacity: 2 Dry Storage Facilities: 5 acres outside Liquid Storage Facilities: 3.4 million gallons	
Major Commodities Handled: Steel, dry fertilizer and lignin liquor	



River Barge Terminal Directory
Rev. April 2011

Dubuque Barge & Fleeting Service Co/Newt Marine	River Mile: 579.5
Address: 5 Jones Street Dubuque, IA 52001	Phone: 563-557-1855 FAX: 563-588-4371
Contact Person: Jim Strief, Sheila McCarty, Carter Newt, or Steve Cavanaugh	E-Mail: cnewt@newtmarine.com
Facility Owner: Gary W. Newt	
Railroad Service: CN, BNSF	
Services Provided: Fleet and Harbor Services Plus Rail Car Storage Capacity: 15 cars Barges Stored Capacity: 100 Dry Storage Facilities: 4 acres Marine construction, barge rental (flat decks, hoppers, and sectionals), equipment rental (truckable tug boats, generators, and safety boxes)	



River Barge Terminal Directory
Rev. April 2011

Cargill AgHorizons	River Mile: 580.0
Address: 1050 Kerper Boulevard Dubuque, IA 52001	Phone: 563-556-4532 FAX: 563-556-3593
Contact Person: Sean Kratzer	E-Mail: www.cargilagherizons.com
Facility Owner: Cargill AgHorizons	
Railroad Service: CN	
Services Provided: Rail Car Storage Capacity: 40 cars Barges Worked Capacity: 2 Barges Stored Capacity: 1 Dry Storage Facilities: 60,000 bushels (grain), 35,000 tons (fertilizer)	
Major Commodities Handled: Corn, soybeans, fertilizer, and salt	



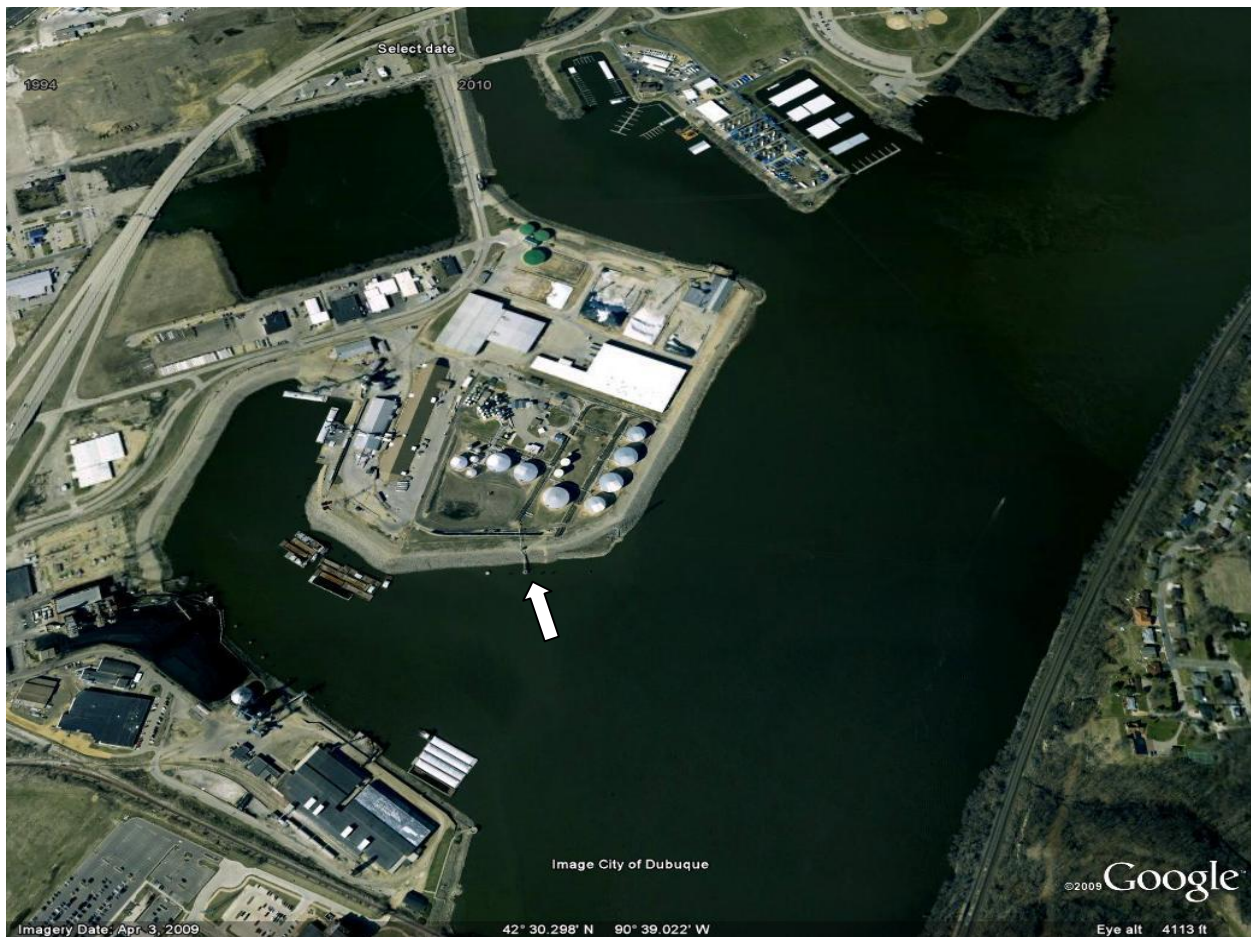
River Barge Terminal Directory
Rev. April 2011

Dubuque Power Plant	River Mile: 580.0
Address: 920 Kerper Boulevard Dubuque, IA 52001	Phone: 563-587-6201 FAX: 563-556-4581
Contact Person: Craig Crawford	E-Mail: craigcrawford@alliantenergy.com
Facility Owner: Alliant Energy	
Services Provided: Barges Worked Capacity: 1 Barges Stored Capacity: 2 Dry Storage Facilities: 130,000 tons	
Major Commodities Handled: Coal	



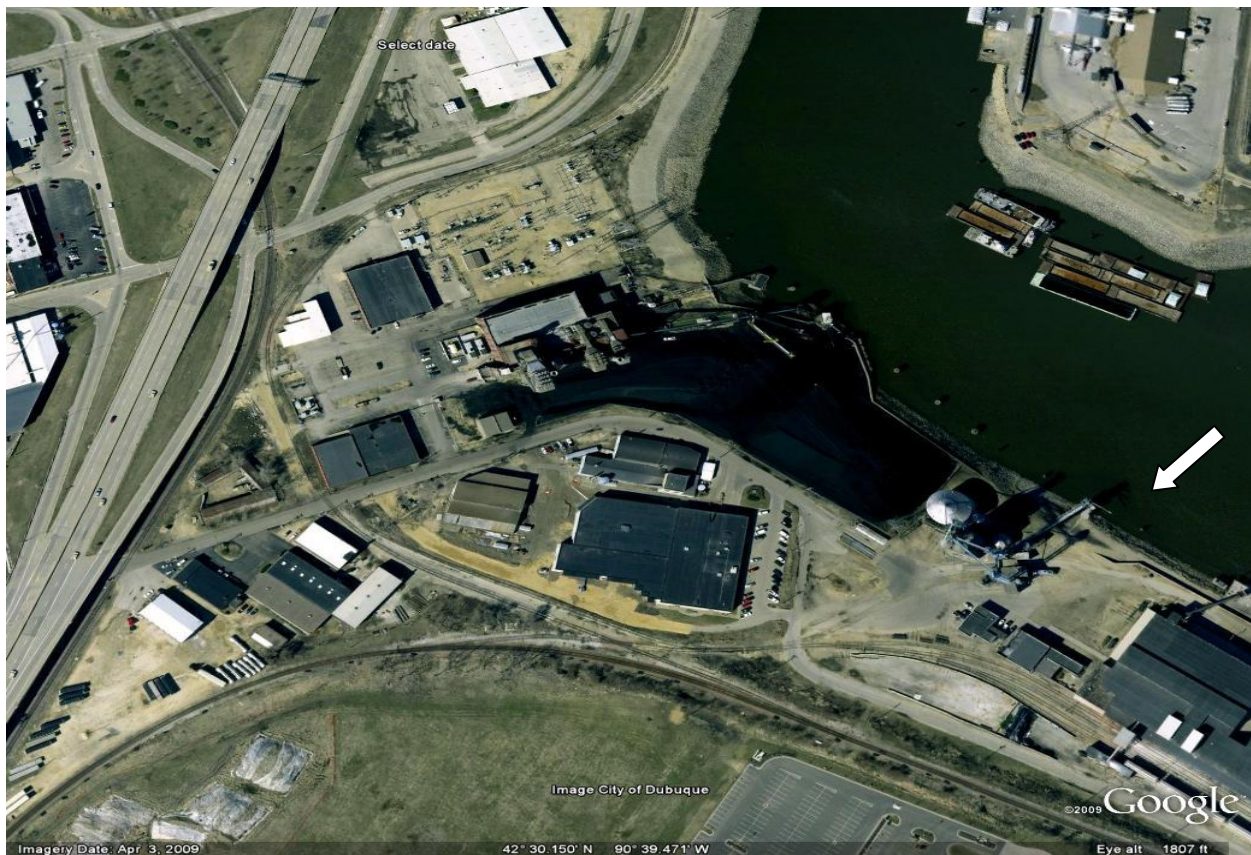
River Barge Terminal Directory
Rev. April 2011

Flint Hills Resources, LP	River Mile: 580.0
Address: 1550 Koch Court Dubuque, IA 52001	Phone: 563-556-1304 FAX: 563-556-5389
Contact Person: Tim Muir	E-Mail: tim.muir@fnr.com
Facility Owner: Flint Hills Resources, LP	
Railroad Service: Various	
Services Provided: Rail Car Storage Capacity: 8 cars Barges Worked Capacity: 2 Liquid Storage Facilities: Yes	
Major Commodities Handled: Asphalt, and cement	



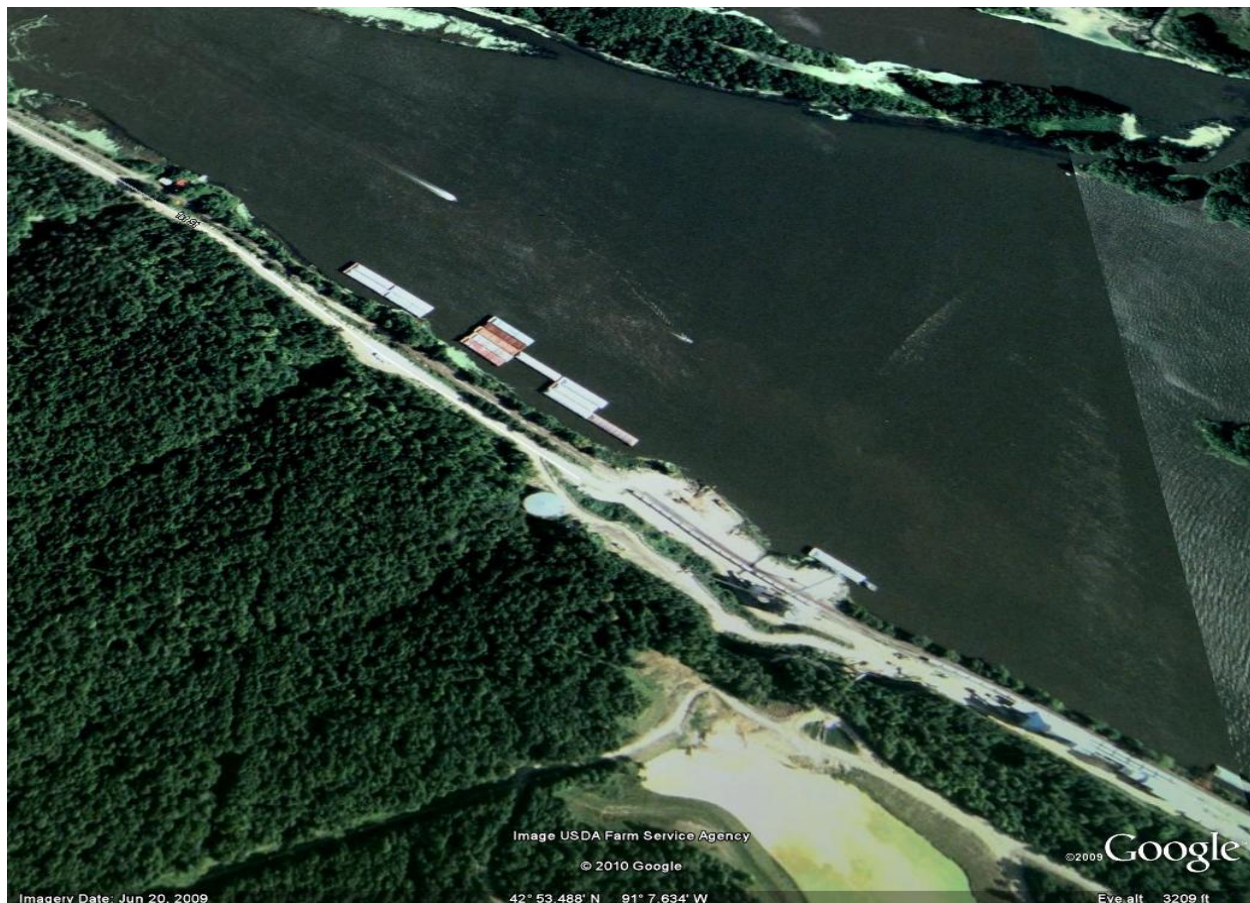
River Barge Terminal Directory
Rev. April 2011

Peavey Company	River Mile: 580.0
Terminal Address: 505 East 7 th Street Dubuque, IA 52001	Phone: 563-556-4256 FAX: 563-556-1924
Contact Person: Delbert Uhlik	E-Mail: delbert.uhlikjr@gavilon.com
Facility Owner: Gavilon Grain LLC	
Railroad Service: CN, BNSF and DME	
Services Provided: Rail Car Storage Capacity: 45 cars Barges Worked Capacity: 2 Barges Stored Capacity: 12 Dry Storage Facilities: 350,000 bushels upright, 1.7 million bushels outside, 35,000 tons dry bulk fertilizer	
Major Commodities Handled: Corn, soybeans, urea, DAP, MAP, DDG, ammonium sulfate, coal, lumber, and steel re-bar	



River Barge Terminal Directory
Rev. April 2011

Pattison Sand Co. LLC	River Mile: 623.0
Address: 703 1 st Street Clayton, IA 52049	Phone: 563-964-2680 FAX: 563-964-2616
Contact Person: Kyle Pattison	E-Mail: kpattison@pattisonsand.com
Facility Owner: Kyle Pattison/Bernard Pattison	
Railroad Service: DME	
Services Provided: Rail Car Storage Capacity: 150 cars Barges Worked Capacity: 3 Barges Stored Capacity: 100	
Major Commodities Handled: Silica sand: 20/40, 40/70, 30/50, 60/140, limestone class 3, and 3i concrete stone	



River Barge Terminal Directory
Rev. April 2011

Pattison Sand Co. LLC	River Mile: 624.0
Address: 703 1 st Street Clayton, IA 52049	Phone: 563-964-2860 FAX: 563-964-2616
Facility Owner: Kyle Pattison/Bernard Pattison	E-Mail: kpattison@pattisonsand.com
Railroad Service: DME	
Services Provided: Rail Car Storage Capacity: 160 cars Barges Worked Capacity: 3 Barges Stored Capacity: 100	
Major Commodities Handled: Silica sand: 20/40, 40/70, 30/50, 60/140, limestone class 3 and, 3i concrete stone	



River Barge Terminal Directory
Rev. April 2011

AGRI-Bunge, LLC	River Mile: 633.4
Address: East B Street, PO Box 160 McGregor, IA 52157	Phone: 319-873-3436 FAX: 319-873-3438
Contact Person: Regina Minary	E-Mail: regina.minary@bunge.com
Facility Owner: AGRI Industries	
Railroad Service: DME	
Services Provided: Rail Car Storage Capacity: 25 cars Barges Worked Capacity: 1 Barges Stored Capacity: 8 Dry Storage Facilities: 1 million bushels	
Major Commodities Handled: Corn and soybeans	



River Barge Terminal Directory
Rev. April 2011

ARTCO Fleeting Services	River Mile: 634.0
Terminal Address: McGregor, IA 52157	Terminal Phone: 563-880-2311
Office Address: PO Box 585 Cassville, WI 53806	Office Phone: 608-725-2311
Contact Person: Ron White	E-mail: ronwhite@adm.com
Facility Owner: American River Transportation Co.	E-Mail: artco@pcii.net
Services Provided: Fleet and Harbor	



River Barge Terminal Directory
Rev. April 2011

Lansing Power Station	River Mile: 660.3
Address: 2320 Power Plant Drive Lansing, IA 52151	Phone: 563-538-3118 FAX: 563-538-4386
Contact Person: Hank Sangster	E-Mail: William.sangster@alliantenergy.com
Facility Owner: Alliant Energy	
Railroad Service: DME	
Services Provided: Dry Storage Facilities: 600,000 tons	
Major Commodities Handled: Coal and fly ash	

