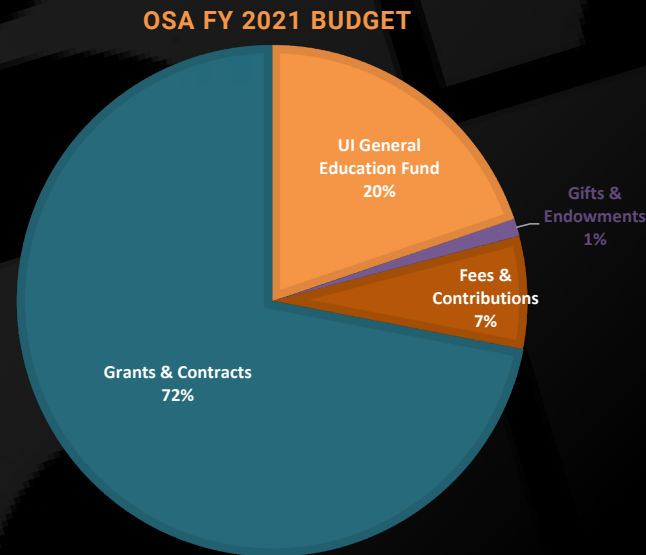


# Office of the State Archaeologist

*Fiscal Year 2021 Annual Report*



FY21 Annual Work Plan

FY22 Plans & Prospects

Nuts & Bolts

Appendices



**IOWA**<sup>TM</sup>

# FY 2021 Annual Work Plan Accomplishments

In FY 2021 the OSA continued to energetically pursue research, education and outreach, and service activities on campus and throughout Iowa, the surrounding region, and internationally as was possible during the pandemic. In the process, the OSA continued engaging with a wide variety of students and publics in and outside of Iowa. The OSA established 23 specific objectives for FY 2021 which reflected goals identified in OSA's Strategic Plan: 2016–2021 ([see Appendix A](#)). These objectives were designed to focus OSA staff energy toward contributing to UI's efforts to be a leading public research university while cost-efficiently maximizing the development, dissemination, and preservation of knowledge of Iowa's human past as authorized and required by statute and in accord with professional best practices. The specific objectives and their outcomes include:

1. Continue conducting high-quality archaeological, architectural history, and osteological research for regional, national, and international grant-funded sponsors, especially for major economic infrastructure projects such as highways, communication towers, utility corridors, and recreation areas through the OSA's research division. **Successful**
2. Further assist farms, small business, and non-profits to quickly meet their local, state, and federal regulatory obligations at affordable costs. **Successful**
3. Carry on with statewide education and outreach with communities and K-12 audience, especially building capacity for expanded digital programming. **Successful**
4. Continue strategic initiatives to increase OSA's fundraising capacity in support of education and research activities statewide. **Successful**
5. Maintain high-quality statewide osteological services to the State Medical Examiner's Office and law enforcement personnel as needed and continue to work with Iowa citizens, state agencies, tribal partners, and county level historic preservation commissions to document historic cemeteries and ancient burial sites on both private and state-owned lands. **Successful**
6. Utilize OSA resources to offer undergraduate and graduate students research and employment opportunities including as volunteers, work-study students, research assistants, and interns, and mentor graduate students in Anthropology—especially those working on a Master's degree specialization in Cultural Resource Management archaeology or Midwest/Plains research topics. **Significantly hampered by pandemic but still successful**
7. Continue to extend the impact of the OSA's various social media efforts, such as Facebook, Twitter, Tumblr, and Instagram, to further increase the number of followers and timely dissemination of information on Iowa archaeology topics. **Successful**
8. Transform the OSA website to reflect current staffing, activities, and professional services for research and education statewide. **Partially successful/in progress**
9. Submit for publication at least 10 articles, reports, and book chapters, including to peer-reviewed journals, and continue contributions to newsletters, online websites, and wikis to improve the dissemination of information about the significance and value of Iowa's past. **Successful**
10. Begin three-year program implementing three grants (Iowa Science Foundation, UI Arts & Humanities Internal Funding, and SHSI Historical Resource Development Program) supporting investigations at 13PM7, a Mill Creek Culture village site impacted by spring 2019 flooding on the Big Sioux River, Plymouth County, Iowa, and the materials recovered from the site summer/fall 2019. **Successful**
11. Undertake FEMA-supported mitigation of adverse effects associated with disaster recovery at Lake Delhi, including development of Section 106 awareness training, signage, and a conservation easement. **Initiated successfully/in progress**
12. Continue development of OSA's capacity to conduct drone-based research by utilizing OSA's equipment in field projects involving collection of high-resolution and thermal images and develop skills in processing and analyzing collected images. **Successful**
13. Complete a NAGPRA Consultation/Documentation Grant involving review of OSA's artifact collections for any unassociated funerary objects, sacred objects and items of cultural patrimony that may be subject to NAGPRA. Host a consultation event at OSA with tribes for their assistance in identification of these items. **Delayed to FY 2022 due to pandemic**
14. Complete reporting and educational outreach for the DOT-funded project Bringing the Glenwood Culture to Iowans: Research, Publication, and Engagement on Archaeological Sites Excavated by the Iowa Department of Transportation. **In progress**
15. Conduct a national search to recruit an OSA Research Collections Director to replace the retired John L. Cordell. **Successful**
16. Coordinate student research and training using newly acquired high resolution 3D scanning technology with the Department of Anthropology and Paleontology Repository. **Initiated successfully/in progress**
17. Teach during fall 2020 a first-year seminar section, Biological Anthropology, which engages incoming UI students in current research at the OSA. **Successful**
18. Teach during spring 2021 the online course, CRM Archaeology: Practice and Practicalities, on behalf of the UI Department of Anthropology. **Successful**
19. Teach in fall 2020, Introduction to Field Archaeology, for Cornell College and in summer 2021, Field Archaeology, through the Iowa Lakeside Laboratory Regents Resource Center. **Successful**
20. Assist the Iowa Archeological Society in developing content for its independent website and social media. **Successful**
21. Publish the Wall Ridge Site (13ML176) volume through the University of Utah Press. **Successful**
22. Complete modernization of the OSA's archival database by finalizing iArc as an efficient online access portal. **In progress**
23. Participate in the 2021 Society for American Archaeology international conference (San Francisco, CA) and chair the national Public Education Committee annual meeting. **Conducted in virtual format due to pandemic/successful**

# FY 2022 Plans and Prospects

In FY 2022 the OSA will continue to energetically pursue research, education and outreach, and service activities on campus and throughout Iowa, the surrounding region, and internationally. In the process, the OSA will continue engaging with a wide variety of students and publics in and outside of Iowa. The OSA has established 23 specific objectives for FY 2022 which reflect goals that will be fully developed in the upcoming OSA Strategic Plan: 2022–2026. These objectives are designed to focus OSA staff energy toward contributing to UI's efforts to be a leading public research university while cost-efficiently maximizing the development, dissemination, and preservation of knowledge of Iowa's human past as authorized and required by statute and in accord with professional best practices. The specific objectives are:

1. Continue conducting high-quality archaeological, architectural history, and osteological research for regional, national, and international grant-funded sponsors, especially for major economic infrastructure projects such as highways, communication towers, utility corridors, and recreation areas through the OSA's research division.
2. Further assist farms, small business, and non-profits to quickly meet their local, state, and federal regulatory obligations at affordable costs.
3. Carry on with statewide education, outreach, and engagement with communities and K-12 audiences, especially building capacity for expanded digital programming.
4. Continue strategic initiatives to increase OSA's fundraising capacity in support of education and research activities statewide.
5. Maintain high-quality statewide osteological services to the State Medical Examiner's Office and law enforcement personnel as needed and continue to work with Iowa citizens, state agencies, Tribal partners, and county-level historic preservation commissions to document historic cemeteries and ancient burial sites on both private and state-owned lands.
6. Utilize OSA resources to offer undergraduate and graduate students research and employment opportunities including as volunteers, work-study students, research assistants, and interns, and mentor graduate students in Anthropology—especially those working on a Master's degree specialization in Cultural Resource Management archaeology or Midwest/Plains research topics.
7. Continue to extend the impact of the OSA's various social media efforts, such as Facebook, Twitter, Tumblr, and Instagram, to further increase the number of followers and timely dissemination of information on Iowa archaeology topics.
8. Further transform the OSA website to best reflect current staffing, activities, and professional services for research and education statewide.
9. Submit for publication at least 10 articles, reports, and book chapters, including to peer-reviewed journals, and continue contributions to newsletters, online websites, and wikis to improve the dissemination of information about the significance and value of Iowa's past.
10. Begin the second of a three-year program implementing three grants (Iowa Science Foundation, UI Arts & Humanities Internal Funding, and SHSI Historical Resource Development Program) supporting investigations of 13PM7, a Mill Creek Culture village site impacted by spring 2019 flooding on the Big Sioux River, Plymouth County, Iowa, and present posters at the annual meetings of the Midwest Archaeological Conference and Plains Anthropological Society.
11. Complete Year Two of the collaborative federally funded IMLS Connected for Life grant in conjunction with the Stanley Museum of Art, Pentacrest Museums, and UI Libraries.
12. Complete FEMA-supported mitigation of adverse effects associated with disaster recovery at Lake Delhi, including development of Section 106 awareness training, signage, and a conservation easement protecting archaeological sites 13DW118–13DW121.
13. Continue development of OSA's capacity to conduct drone-based research by utilizing OSA's equipment in field projects involving collection of high-resolution and thermal images and develop skills in processing and analyzing collected images.
14. Complete a NAGPRA Consultation/Documentation Grant involving review of OSA's artifact collections for any unassociated funerary objects, sacred objects, or items of cultural patrimony that may be subject to NAGPRA. Host a consultation event at OSA in spring 2022 with Tribes for their assistance in identification of these items.
15. Complete reporting and educational outreach for the Iowa DOT-funded project Bringing the Glenwood Culture to Iowans: Research, Publication, and Engagement on Archaeological Sites Excavated by the Iowa Department of Transportation.
16. Welcome and complete on-boarding for OSA's new Research Collection Director Caroline Parris.
17. Coordinate further student research and training using high resolution 3D scanning technology with the Department of Anthropology and Paleontology Repository; develop OSA 3D printing capacity with installation of new printer hardware.
18. Teach during fall 2021 two first-year seminars which engage incoming UI students in current research at the OSA.
19. Teach during fall 2021 the online course, Archaeology of the American Midcontinent, on behalf of the UI Department of Anthropology.
20. Teach in spring 2022, Introduction to Archaeology, for Cornell College and in summer 2022, Field Archaeology, through the Iowa Lakeside Laboratory Regents Resource Center.
21. Continue to assist the Iowa Archeological Society including developing content for its independent website and social media.
22. Complete modernization of the OSA's archival database by finalizing iArc as an efficient online access portal and search engine.
23. Participate in the 2022 Society for American Archaeology international conference (Chicago, IL): chair the national Public Education Committee annual meeting, and organize a symposium on research involving 13PM7.

## OSA Organizational Chart



Salaries	\$352,148
Fringe Benefits	\$141,299
General Expenses	\$7,121
Safety Equipment	\$479
Cost Share	\$9,147
Bioarchaeology	\$4,493
<b>Total</b>	<b>\$514,684</b>



- ## OSA Funding Levels 1987–2021

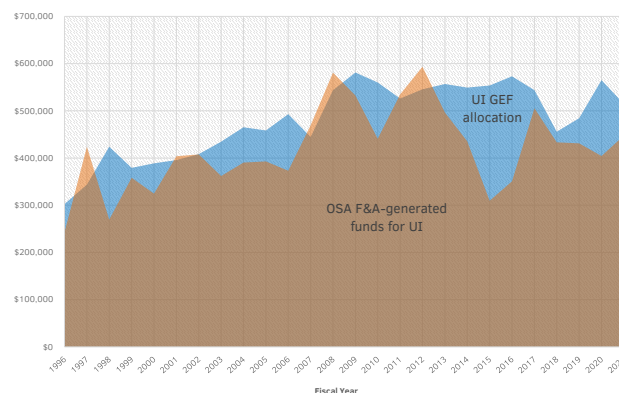
[illegible]

## Gifts, Fees, & Endowment Returns

### Funding Received from Gifts, Fees, and Endowments, Fiscal Year 2021

[illegible]

## GEF Received vs. F&A Generated



## Sponsored Research

Funding Received for Sponsored Research and Services, Fiscal Year 202

◀ Table of Contents

# Office of the State Archaeologist Budgets, Fiscal Years 1987–2021

Fiscal Year	University of Iowa GEF <sup>1</sup> Support <sup>2</sup>	Research Incentive Funds <sup>3</sup>	Gifts, Fees, and Return on Endowments <sup>4,5</sup>	Grants and Contracts	Total	% Non-GEF Support	Facilities and Administration Returns
1987	\$166,378	—	—	\$343,814	\$510,192	67.4	—
1988	\$180,450	—	—	\$381,611	\$562,061	67.9	—
1989	\$218,321	—	—	\$746,440	\$964,761	77.4	—
1990	\$250,721	—	—	\$758,115	\$1,012,228	75.2	—
1991	\$241,892	—	\$3,392	\$1,032,124	\$1,294,682	81.3	—
1992	\$231,763	—	\$20,666	\$1,355,345	\$1,591,936	85.4	—
1993	\$248,162	—	\$4,828	\$1,503,660	\$1,755,747	85.9	—
1994	\$255,391	—	\$3,925	\$1,860,710	\$2,117,096	87.9	—
1995	\$273,846	—	\$995	\$1,815,692	\$2,092,980	86.9	—
1996	\$302,603	—	\$3,442	\$2,143,301	\$2,455,503	87.7	\$242,812
1997	\$343,630	\$9,227	\$9,599	\$1,792,913	\$2,150,644	83.6	\$423,888
1998	\$423,937	\$16,108	\$4,874	\$3,044,573	\$3,490,368	87.4	\$269,706
1999	\$379,304	\$10,249	\$5,750	\$2,726,245	\$3,132,349	87.6	\$358,258
2000	\$388,748	\$13,614	\$16,551	\$3,085,581	\$3,502,231	88.5	\$324,627
2001	\$395,735	\$12,336	\$14,288	\$3,531,186	\$3,980,826	89.7	\$403,836
2002	\$408,102	\$15,346	\$41,569	\$3,791,216	\$4,265,078	90.1	\$407,757
2003	\$434,657	\$15,495	\$50,414	\$2,551,074	\$3,037,292	85.2	\$361,995
2004	\$465,291	\$13,756	\$36,066	\$2,589,257	\$3,126,918	84.7	\$390,363
2005	\$458,501	\$14,834	\$58,614	\$2,357,860	\$2,932,505	83.9	\$392,968
2006	\$492,868	\$14,933	\$101,310	\$2,474,091	\$3,031,824	83.2	\$373,047
2007	\$444,831	\$14,176	\$51,932	\$3,876,329	\$4,423,189	89.5	\$469,414
2008	\$543,708	\$17,838	\$87,853	\$3,471,418	\$4,246,459	86.5	\$580,886
2009	\$581,252	\$23,276	\$213,495	\$3,622,303	\$4,605,904	87.4	\$532,334
2010	\$560,044	\$22,115	\$379,073	\$2,854,434	\$3,634,397	84.6	\$440,829
2011	\$526,065	\$16,751	\$197,804	\$3,577,491	\$4,447,546	88.2	\$534,829
2012	\$545,644	\$22,549	\$327,239	\$1,607,403	\$2,501,457	78.2	\$593,395
2013	\$556,823	\$18,866	\$325,861	\$2,702,664	\$3,384,040	83.5	\$496,486
2014	\$549,183	\$16,548	\$105,687	\$2,257,603	\$2,929,998	81.3	\$435,478
2015	\$553,675	\$11,760	\$106,664	\$2,066,947	\$2,779,426	80.1	\$309,461
2016	\$573,010	\$13,326	\$127,227	\$1,912,317	\$2,625,880	78.2	\$350,678
2017	\$543,911	\$11,760	\$153,050	\$2,118,410	\$2,827,131	80.8	\$505,295
2018	\$455,671	—	\$288,461	\$1,898,736	\$2,642,868	82.8	\$433,275
2019	\$484,461	—	\$201,125	\$1,759,638	\$2,445,224	80.2	\$431,046
2020	\$565,061	—	\$236,295	\$1,975,578	\$2,776,934	79.7	\$404,362
2021	\$514,684	—	\$359,464	\$1,834,507	\$2,708,655	81.0	\$447,588

<sup>1</sup>General Education Fund

<sup>2</sup>Safety equipment contributions by the University of Iowa (UI) are not included for any year prior to FY 2007, nor are they available for these years.

<sup>3</sup>Research Incentive funds first became available in FY 1997.

<sup>4</sup>Amounts for gifts are not available for FY 1987 through FY 2002. Gifts include return on the UI Foundation's endowment funds for the Office of the State Archaeologist.

<sup>5</sup>Amounts for fees and contributions are not available for FY 1987 through FY 1989. Totals for FY 1990 through FY 2000 and FY 2002 do not include I-Site Pro license and site search fees, and totals for FY 1990 through FY 1999 do not include Bioarchaeology fees.



# Funding Received for Sponsored Research and Services, Fiscal Year 2021

SPONSOR	PROJECT	COUNTY	BUDGET
AECOM	review of archaeological survey AECOM report	Lyon	975.00
Allen Homes, Inc.	archaeological survey of Carson farm subdivision project	Johnson	6,865.00
Alliant Energy	archaeological survey of Des Moines river crossing project	Boone	4,893.00
Axiom Consultants	archaeological survey of Scott Boulevard subdivision project	Johnson	3,356.00
Cedar Valley Habitat for Humanity	archaeological survey of two CVHH lots project	Linn	1,274.00
City of Council Bluffs	cultural resources desktop evaluation of Franklin Heights subdivision project	Pottawattamie	1,035.00
City of Davenport	archaeological survey of Water Pollution Control Plant berm project	Scott	7,983.00
City of Des Moines	archaeological monitoring of Woodland Cemetery project	Polk	2,629.00
City of Essex	architecture history survey of Essex water tower project	Page	6,776.00
City of Norwalk	cultural resources desktop evaluation of Norwalk Trail project	Warren	1,937.00
City of Soldier	architecture history survey of Soldier water tower project	Monona	7,866.00
City of Washington	archaeological survey of Washwell LWCF project	Washington	6,124.00
Creston Historic Preservation Commission	architecture history survey of Creston downtown survey project	Union	18,435.00
Evan and Kressa Evans	archaeological survey of Evans Subdivision project	Johnson	2,064.00
GSS Inc.	cultural resources desktop evaluation of Wallingford AMI monopole project	Calhoun	1,225.00
	cultural resources desktop evaluation of Chester AMI monopole project	Woodbury	1,225.00
	cultural resources desktop evaluation of Newton 009 Antenna Pole project	Allamakee	1,349.00
	archaeological and architecture history reconnaissance of Waterville AMI Pole project	Woodbury	1,724.00
	archaeological and architecture history survey of Hornick W20121 project	Howard	1,855.00
	archaeological and architecture history survey of Rockwell City tower project	Clarke	1,941.00
	archaeological and architecture history reconnaissance of W20537 Grand View Park Antenna project	Jasper	1,950.00
	cultural resources desktop evaluation of two Osceola antenna node projects	Wapello	1,978.00
	archaeological and architecture history reconnaissance of four antenna node projects	Multi-County	2,320.00
	archaeological and architecture history reconnaissance of eight Indianola antenna node projects	Warren	3,967.00
	archaeological and architecture history reconnaissance of 28 Ottumwa antenna projects	Linn	9,520.00
	additional archaeological investigation and aerial thermographic survey of 13LN352 of 13LN352 test units and drone survey project	Emmet	24,018.00
Hall Engineering Company	archaeological survey of Cincinnati SAGR wastewater project	Appanoose	9,131.00
Hart-Frederick Consultants PC	archaeological survey of Slabaugh Frytown project	Johnson	1,780.00
	archaeological survey of Krug Subdivision project	Johnson	1,911.00
	archaeological survey of Country Place Development project	Johnson	3,866.00
HD Rentals	archaeological and architecture history survey of 2214 Dillons Furrow project	Johnson	3,951.00
Iowa Army National Guard	archaeological survey of Camp Dodge Site 1 project	Polk	3,382.00
	archaeological survey of Camp Dodge Site 2 project	Polk	3,382.00
	archaeological survey of West Des Moines project	Polk	4,865.00

# Funding Received for Sponsored Research and Services, Fiscal Year 2021

SPONSOR	PROJECT	COUNTY	BUDGET
Iowa Department of Agriculture and Land Stewardship	archaeological survey of DeLong abandoned mine land reclamation project	Greene	2,693.00
	archaeological reconnaissance of But901622D-TZ Koop Wetland project	Winneshiek	3,445.00
	archaeological reconnaissance of Pocontas Wetland VanGorkum project	Butler	3,537.00
	archaeological survey of Wiederin Wetland project	Marion	9,414.00
	archaeological survey of DIC983634D Jones Wetland project	Pocahontas	9,468.00
	archaeological reconnaissance of BO0852517D Warriner Wetland project	Boone	na
	archaeological survey of WINN961010A Einwalter Wetland project	Dickinson	na
Iowa Department of Natural Resources	cultural resources desktop evaluation of Elk Run Heights CWSRF project	Jackson	906.00
	cultural resources desktop evaluation of Big Creek Lake boat access improvements project	Lyon	989.00
	cultural resources desktop evaluation of Big Creek State Park boat storage lot project	Allamakee	1,096.00
	cultural resources desktop evaluation of Lake McBride Road NE Reconstruction project	Allamakee	1,096.00
	cultural resources desktop evaluation of Wilson Island improvements project	Dickinson	1,096.00
	cultural resources desktop evaluation of Lake MacBride north shore boat ramp parking lot extension project	Warren	1,096.00
	archaeological reconnaissance of Lake Ahquabi State Park improvements project	Polk	1,722.00
	archaeological reconnaissance of Wasipincon State Park streambank stabilization and boat ramp repair project	Van Buren	1,772.00
	archaeological survey of Frederika CWSRF project	Union	1,789.00
	archaeological survey of Lost Nation DWSRF project	Iowa	1,796.00
	archaeological survey of Fort Atkinson well project	Ida	1,832.00
	archaeological survey of Anamosa well and water main project	Linn	1,842.00
	archaeological survey of Elkhart DWSRF project	Cerro Gordo	1,859.00
	archaeological survey of Sugema WMA fence removal project	Warren	1,978.00
	archaeological survey of Virgin Lake parking lot project	Bremer	2,022.00
	archaeological survey of Melcher-Dallas CWSRF project	Emmet	2,075.00
	archaeological survey of Humeston wastewater treatment facility improvement project	Story	2,088.00
	archaeological survey of Little Paint Creek streambank restoration project	Pocahontas	2,336.00
	archaeological survey of Preparation Canyon State Park kiosk project	Iowa	2,389.00
	archaeological survey of Jamaica DWSRF project	Wayne	2,393.00
	archaeological reconnaissance of Waverly CWSRF project	Benton	2,407.00
	archaeological survey of Dyersville CWSRF project	Boone	2,407.00
	archaeological survey of Dougherty wastewater collection system project	Dickinson	2,418.00
	archaeological survey of Ventura water treatment plant project	Dubuque	2,428.00
	archaeological survey of Ingham Lake and Swan Lake improvements project	Guthrie	2,449.00
	archaeological survey of Pocahontas water main project	Bremer	2,579.00

# Funding Received for Sponsored Research and Services, Fiscal Year 2021

SPONSOR	PROJECT	COUNTY	BUDGET
Iowa Department of Natural Resources, continued	archaeological reconnaissance of Traer water treatment improvements project	Ringgold	2,594.00
	archaeological survey of Inwood drinking water improvements project	Dickinson	2,651.00
	archaeological survey of Ringgold WMA Sediment Basin project	Wayne	2,880.00
	archaeological survey of Miles CWSRF project	Clayton	2,882.00
	archaeological survey of DWSRF Cedar Rapids water treatment plant upgrades project	Dickinson	2,916.00
	archaeological survey of Sportsman boat ramp project	Delaware	2,969.00
	archaeological survey of Garlock Slough water pump installation project	Polk	2,998.00
	supplemental archaeological survey of Ingham Lake improvements project	Boone	3,092.00
	archaeological survey of Pillsbury Point sidewalk and shoreline restoration project	Multi-County	3,115.00
	archaeological reconnaissance of WO 105 DNR Vinton project	Johnson	3,173.00
	archaeological survey of McDowell Spring Wetland restoration project	Jones	3,306.00
	archaeological survey of Pikes Peak State Park campground improvement project	Woodbury	3,548.00
	archaeological survey of Center Point wastewater treatment facilities upgrades project	Jones	3,550.00
	archaeological survey of Ankeny DWSRF project	Polk	3,615.00
	archaeological survey of Lake Ahquabi State Park renovations project	Warren	3,673.00
	archaeological survey of Williamsburg CWSRF project	Black Hawk	3,796.00
	archaeological reconnaissance of Green Pastures Wetland restoration project	Winneshiek	3,800.00
	archaeological survey of Three Mile Lake improvement project	Union	3,817.00
	archaeological reconnaissance of Otter Creek restoration project	Cerro Gordo	3,824.00
	archaeological survey of Ely Hoosier Creek Trunk sewer project	Monona	3,863.00
	archaeological survey of Ida Grove DWSRF project	Story	3,908.00
	archaeological survey of Little Paint Creek project	Polk	3,997.00
	archaeological survey of Wasipincon State Park streambank stabilization project	Jones	4,159.00
	archaeological survey of Nevada Trunk Line sewer improvements project	Tama	4,160.00
	archaeological reconnaissance of Ames Well Field System project	Pottawattamie	4,174.00
	architecture history reconnaissance Correctionville sewer repair and replacement project	Linn	4,717.00
	archaeological survey of West Branch CWSRF project	Multi-County	4,985.00
	archaeological survey of Backbone road reconstruction project	Webster	5,217.00
	archaeological survey of Slater water treatment improvements project	Palo Alto	5,719.00
	archaeological reconnaissance of Marengo wastewater treatment upgrade project	Linn	5,736.00
	archaeological survey of WO 103 DNR Fort Dodge project	Johnson	5,917.00
	archaeological survey of Green Valley Campground renovation project	Lyon	6,546.00
	archaeological reconnaissance of DNR WO 127 Three Mile Lake project	Emmet	6,776.00
	archaeological survey of Riverton tree clearing project	Iowa	6,799.00
	cultural resources desktop evaluation of Dubuque County Three Water Trails project	Union	7,433.00



# Funding Received for Sponsored Research and Services, Fiscal Year 2021

SPONSOR	PROJECT	COUNTY	BUDGET
Iowa Department of Natural Resources, continued	archaeological survey of Lyon and Sioux water treatment plant project	Clinton	8,519.00
	archaeological survey of Coal Creek Seasonal Marsh Pool project	Dickinson	11,953.00
	archaeological survey of Marengo CWSRF project	Fremont	12,994.00
	archaeological survey of Red Rock Coal Creek seasonal marsh levee and geoarchaeological survey project	Tama	15,340.00
	archaeological survey of Silver Lake shoreline restoration project	Cedar	15,722.00
	archaeological survey of Grimes wastewater treatment sewer project	Marion	16,353.00
	archaeological survey of Upper Frasier boat ramp project	Story	na
Iowa Department of Transportation Location and Environment Bureau	cultural resources desktop evaluation of BROS-SWAP-C040(102)-SE-40 project	Hamilton	1,555.00
	archaeological survey of Appanoose Bridge 2 project	Crawford	9,347.69
	archaeological survey of Appanoose Bridge 1 project	Dubuque	17,392.22
	architecture history survey of US 52 Dubuque County project	Appanoose	52,197.00
	archaeological survey of US 52 Dubuque County project	Appanoose	65,782.00
	archaeological testing at site 13CF50	Dubuque	85,951.00
	annual contract	Multi-County	946,274.81
Johnson County Conservation	cultural resources desktop evaluation of Reilly Parcel project	Johnson	915.00
	cultural resources desktop evaluation of Melloy Property project	Johnson	956.00
Johnson County Historic Poor Farm	improvement recommendations for unmarked Johnson County Historic Poor Farm Cemetery of Johnson County Historic Poor Farm project	Johnson	5,421.00
Johnson County Soil & Water Conservation District	cultural resources desktop evaluation of IEDA-CDBG CC162-163 Coralville project	Iowa	943.00
	archaeological survey of IEDA-CDBG Boyle 116-117 project	Johnson	1,785.00
	archaeological survey of CC-113-Rath and CC-114-Rath IEDA-CDBG project	Johnson	1,791.00
	archaeological survey of Woody Pond CC-129 project	Johnson	2,058.00
	archaeological survey of Coralville Central Park wetland project	Johnson	2,846.00
	archaeological survey of Buffalo Creek Development project	Johnson	2,860.00
	archaeological survey of Asmussen Rustand IEDA-CDBG project	Iowa	6,945.00
Madison County Secondary Roads	archaeological survey of 195th Trail culvert project	Madison	1,846.00
	archaeological survey of Knoll Ridge Bridge embankment project	Madison	1,911.00
Marshall County Conservation Board	archaeological survey of Timmons Grove Park shower project	Marshall	1,859.00
Merjent	archaeological survey of Jurgens farm tap upgrade project	Delaware	4,331.00
MMS Consultants Inc.	archaeological survey of Auburn Ridge Subdivision project	Johnson	3,309.00
Oak Hill Consulting, Inc.	archaeological survey of LaMotte and Andrew telephone project	Multi-County	2,656.00
	cultural resources desktop evaluation of Farmer's Mutual Telephone Company Reconnect 2 project	Jackson	4,717.00
Oak Meadows LLC	archaeological survey of Oak Meadows LLC Subdivision project	Johnson	4,474.00

# Funding Received for Sponsored Research and Services, Fiscal Year 2021

SPONSOR	PROJECT	COUNTY	BUDGET
Osceola County Rural Water System, Inc.	archaeological survey of DWSRF Project FS-72-19-DWSRF-12 project	Multi-County	3,678.00
	supplemental archaeological survey of DWSRF Project FS-72-19-DWSRF-12 project	Multi-County	9,139.00
O'Toole Farms	archaeological survey of O'Toole agricultural buildings project	Muscatine	1,832.00
Polk County Conservation	supplemental funding for Yellow Banks Park artifacts exhibit of Yellow Banks artifact cataloging project	Polk	800.00
Polk County Conservation	archaeological exhibit plans for Yellow Banks Park artifacts of Yellow Banks artifact cataloging project	Polk	3,923.00
	archaeological survey of Dykestra wetland project	Polk	4,290.00
	archaeological survey of Copper Creek MTB Park project	Polk	11,886.00
Pottawattamie Conservation	archaeological survey of Hitchcock Nature Center road and trail improvements project	Pottawattamie	4,496.00
Radio Communications/RCSysytems	archaeological and architecture history reconnaissance of Delaware County E-911 project	Delaware	2,441.00
Renewable Energy Group	archaeological survey of West Ames Card Lock project	Boone	2,656.00
Scallon Custom Homes	archaeological survey of Sandy Beach Subdivision project	Johnson	2,860.00
Shive-Hattery, Inc.	archaeological survey of Lake Panorama CIPCO Dam Improvements project	Guthrie	5,565.00
	cultural resources desktop evaluation of MEC Super Site project	Mills	22,141.00
	archaeological survey of MEC Super Site project	Mills	36,594.00
Terracon	cultural resources desktop evaluation of DES WDM SC095 antenna project	Polk	1,081.00
	archaeological and architecture history survey of DES DSM DT SC11 - B antenna collocation project	Polk	1,706.00
	archaeological and architecture history reconnaissance of DES DSM DT SC47 antenna project	Page	1,772.00
	archaeological and architecture history survey of RSA1 Coin tower project	Polk	2,055.00
	archaeological and architecture history reconnaissance of three Des Moines antennas project	Multi-County	2,939.00
	archaeological and architecture history reconnaissance of five Des Moines and West Des Moines antennas project	Polk	4,241.00
	cultural resources desktop evaluation of eight Des Moines antennas project	Polk	7,245.00
Van Buren County Conservation Board	archaeological survey of Lake Sugema Campground project	Van Buren	2,656.00
Veenstra and Kimm	archaeological survey of Des Moines River Bend and King Irving sewer separation project	Polk	2,817.00
	supplemental evaluation for archaeological survey, geoarchaeological survey, and data recovery plan for the Ingersoll Run Outlet project	Polk	3,416.00

Total \$1,834,507.08

### Vision

The Office of the State Archaeologist aspires to be a nationally recognized archaeological research center emphasizing interdisciplinary excellence.

### Core Values

In addition to supporting the “*University of Iowa Strategic Plan for 2016-2021*,” OSA is guided by the Society for American Archaeology’s Principles of Archeological Ethics. These principles are embodied in nine commitments: *stewardship, accountability, commercialization, public education and outreach, intellectual property, public reporting and publication, records and preservation, training and resources, and safe educational and workplace environments*. As a nationally recognized research facility, OSA is dedicated to engaging multiple constituencies while promoting a dynamic intellectual environment. We focus on advanced research, transformative student learning experiences, and public engagement to inspire and improve the quality of life for all Iowans through education and support of sustainable infrastructure development. We actively contribute to the University’s mission and goals which recognize intellectual and cultural vitality is the foundation of a healthy research organization.

### Mission

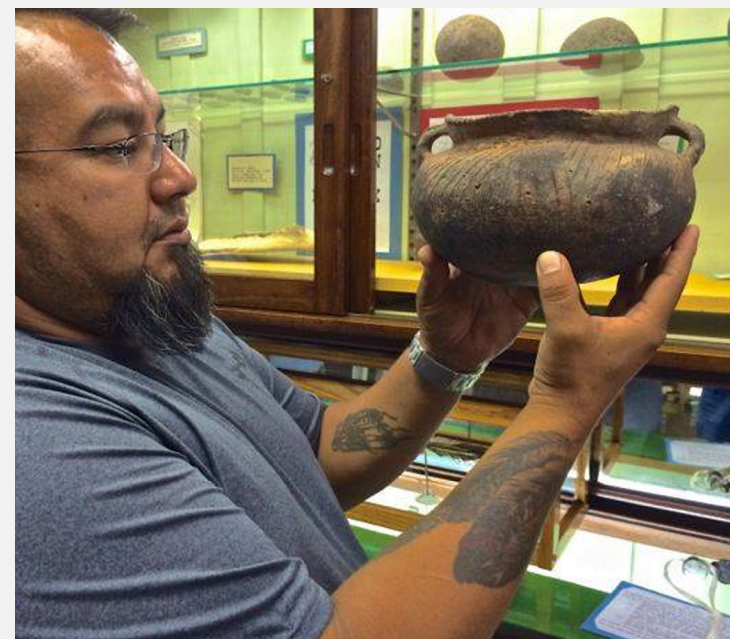
Develop, disseminate, and preserve knowledge of Iowa’s human past through archaeological research, scientific discovery, public stewardship, service, and education.

### GOAL 1:

Conduct high-impact research throughout Iowa and the surrounding region.

- Engage in Iowa-focused archaeological, architectural history, and bioarchaeological research that contributes to understanding Iowa’s past and present.
  - » Focus research effort on topics reflecting core staff strengths.
  - » Investigate and invest in emerging research areas to which staff may successfully contribute.
  - » Broaden the range of contract and grant-supported research opportunities.
  - » Display OSA’s excellence through peer-reviewed publications, large research projects, national and regional conference participation, and exceptional customer service.
  - » Continue OSA’s national leadership role in the respectful treatment of ancient human remains.
- Recruit and retain staff who possess the knowledge, skills, abilities, and diversity to enhance OSA’s research activities while maintaining a high quality workplace environment.
  - » Further develop a “people first” focus to increase staff awareness they are valued.
  - » Improve project management and business practices to maximize support for research staff to conduct high quality and investigations.
  - » Develop additional means to recognize and credit staff for their achievements.
  - » Maintain and enhance gender and ethnic diversity staffing opportunities.
  - » Provide an environment where innovation, flexibility, and collaboration are encouraged and rewarded.

- Contribute to a campus culture in which UI faculty, staff, and students can expand their research productivity.
  - » Creatively explore collaborative research partnerships with campus faculty and staff partners that complement and extend OSA’s areas of strength.
  - » Develop opportunities for meaningful student participation in OSA research.
  - » Direct resources to existing and emerging programs based on their centrality to UI’s mission and potential for sustained funding and excellence.
  - » Encourage new and highlight existing research that illustrates the diverse peoples in Iowa’s archaeological record.



### GOAL 2:

Contribute in meaningful ways to educating UI students to be engaged citizens.

- Increase the visibility and awareness of educational opportunities offered by OSA among the University undergraduate student population.
  - » Enhance affordability and promote effective year-round learning opportunities by offering student ICRU-funded and other internships, work-study positions, and summer work opportunities.
  - » Provide undergraduates with high-quality learning experiences through independent study opportunities leading to honors theses.
  - » Offer specialized courses in archaeology and bioarchaeology through the Anthropology Department not provided by the regular faculty.
  - » Provide field schools and hands-on laboratory research projects that incorporate interdisciplinary studies, international collaborations, and development of specialized technical skills.
- Conduct long-term archaeological projects with funded research opportunities for graduate and post-graduate scholars.
  - » Participate in cross-disciplinary graduate degree programs with other University departments and programs.
  - » Recruit graduate students from University departments and programs to work on OSA projects and provide high quality mentoring experiences to develop expertise and leadership abilities.
  - » Provide research opportunities for graduate students through access to OSA's extensive document and material collections, specialized staff knowledge, and mentoring by professionals.

- Create learning experiences about the human past that enriches the lives of all students and helps them to become well-informed individuals, engaged citizens, and productive employees and employers.
  - » Contribute to a more inclusive campus by educating faculty, staff, and students about diversity in the past.
  - » Improve student critical thinking skills using archaeological data about past human adaptations.
  - » Expand student appreciation for understanding culture change and appreciating the range of human cultural diversity.
  - » Develop student awareness that valuing the human past improves quality of life for all in the present.

### GOAL 3:

Engage statewide with Iowans to support life-long learning about the past to improve the present quality of life and enhance responsible infrastructure development.

- Strengthen and expand OSA partnerships with public constituencies to advance understanding and appreciation about the human past and stewardship of archaeological resources.
  - » Expand partnerships with K–12 educators to promote diversity learning in Iowa history.
  - » Enhance lifelong learning opportunities and professional development on campus and via distance learning through partnerships between OSA, other University departments, and communities and individuals across the state.
  - » Sponsor public field schools in conjunction with OSA research or projects conducted by other partners.
  - » Fulfill statutory obligations on behalf of the public interest in protecting ancient human remains and

burial locations in partnerships with American Indian Nations and other descendant communities, maintaining and expanding the State Archaeological Repository, and providing improved digital access to the Iowa Site File.

- Showcase the societal benefits of archaeological research and teaching for the citizens of Iowa.
  - » Promote OSA's public engagement programming and educational opportunities through social media, radio, internet, and print media.
  - » Engage external partners to enhance archaeological stewardship through conservation easements and foster economic development through heritage tourism.
  - » Encourage the Regents' institutions and statewide colleges to use OSA resources in faculty and student research.
  - » Support the Iowa Archeological Society in its efforts to encourage recording and preserving archaeological sites and artifacts and its other goals.
- Support economic development by helping clients navigate complex federal, state, and local historic preservation legislation as part of statewide infrastructure development projects.
  - » Expand use of digital technologies (e.g., high resolution mapping, drones, applications for mobile devices) to increase speed and quality of field data capture.
  - » Lead the nation through responsible tribal consultation with American Indian nations.
  - » Translate OSA's intellectual work into publicly meaningful contributions to public understanding of and appreciation for the past as part of sustainable and responsible infrastructure development.

## Appendix B: Public Presentations and Media Events, Fiscal Year 2021

County	Location	Staff Member	Sponsor	Date	Topic/Title	Audience
Johnson	OSA	Seraphina Carey, Alan Hawkins	OSA	March 12	Tour of OSA and Discussion of Research Activities	1
Johnson	OSA	Cherie Haury-Artz	OSA	March 17	Tour of OSA and Discussion of Research Activities	2
Linn	Cedar Rapids	Cherie Haury-Artz	Grant Wood Area Education Agency/ College for Kids	June 21-July 1	The Archaeology of Iowa	28
Scott	Davenport	Cherie Haury-Artz	Nahant Marsh Education Center	July 15	Ice Age Iowa; Iowa's First Farmers	11
Digital	n/a	Elizabeth Reetz, Cherie Haury-Artz	OSA	July 15	Livestream: #AskAnArchaeologist	17 live; 44 total views
Digital	n/a	Elizabeth Reetz, Warren Davis	OSA	July 24	Livestream: Ask Me Anything about Archaeology with Warren Davis	18 live; 87 total views
Digital	n/a	Elizabeth Reetz, Lynn Alex	OSA	September 17	Livestream: Archaeology Coffee Hour with Lynn Alex and Elizabeth Reetz	44 live; 175 total views
Digital	n/a	Cherie Haury-Artz	Bellevue Middle/High School	September 18	A Walk Back through Time	2
Digital	n/a	Elizabeth Reetz, David Gradwohl, Lance Foster	OSA	September 22	Livestream: Archaeology Coffee Hour with David Gradwohl and Lance Foster	48 live; 199 total views
Digital	n/a	Johnathan Buffalo, Suzanne Buffalo, John Doershuk, Dan Higginbottom, Katina Lillios, Jacki Rand	OSA	September 28	A Roundtable Discussion on the AIA Statement on Social Justice and Archaeology	117
Digital	n/a	Elizabeth Reetz, Dale Henning, Megan Messerole	OSA	September 30	Livestream: Archaeology Coffee Hour with Dale Henning and Megan Messerole	44 live; 225 total views
Digital	n/a	Cherie Haury-Artz	University of Iowa Department of Earth and Environmental Sciences	October 2	Native American Land Use Practices	20
Digital	n/a	Elizabeth Reetz, Joseph Tiffany, Cherie Haury-Artz	OSA	October 6	Livestream: Archaeology Coffee Hour with Joe Tiffany and Cherie Haury-Artz	37 live; 134 total views
Digital	n/a	Elizabeth Reetz, Michael Perry, Brennan Dolan	OSA	October 13	Livestream: Archaeology Coffee Hour with Mike Perry and Brennan Dolan	39 live; 194 total views
Digital	n/a	Elizabeth Reetz, Amanda Lensing	Johnson County Elderly Consortium	November 4	An overview and introduction to Connected for Life: Object-based Digital Programming to Foster Active Minds for Senior Living Communities	24
Digital	n/a	Cherie Haury-Artz	Grant Wood Area Education Agency	November 12	Virtual office tour for "Open Minds, Open Doors"	20
Digital	n/a	Faith Wilfong, Elizabeth Reetz	OSA	January 15	Livestream OSA Brown Bag: Analysis of the Protohistoric Period Fauna from the Scott County Pueblo (14SC1)	26 live; 150 total views
Digital	n/a	Steven Lensink, Joseph Tiffany, Shirley Schermer, Rebecca Rauch, Bill Green	University of Utah Press	January 27	Virtual Book Launch: "Household Economy at Wall Ridge: A Fourteenth-Century Central Plains Farmstead in the Missouri Valley"	55



## Appendix B: Public Presentations and Media Events, Fiscal Year 2021

County	Location	Staff Member	Sponsor	Date	Topic/Title	Audience
Digital	n/a	Cherie Haury-Artz	Grant Wood Area Education Agency	January 30	Introduction to Archaeology	9
Digital	n/a	Cherie Haury-Artz	Grant Wood Area Education Agency	January 31	Archaeology: Fitting the Pieces Together	9
Digital	n/a	Jennifer Mack	OSA	February 1	Student interview with an archaeologist	1
Digital	n/a	Cherie Haury-Artz	OSA	February 2	Student interview with an archaeologist	2
Digital	n/a	Cherie Haury-Artz	Sanford Museum; Northwest Chapter of the Iowa Archaeological Society	February 3	Food and Animal Symbolism: Fauna from 13WD8 and 13PM7	28
Digital	n/a	Cherie Haury-Artz	Des Moines Botanical Gardens	February 6	Iowa's First Farmers	47
Digital	n/a	Cherie Haury-Artz	University of Iowa Department of Earth and Environmental Sciences	February 9	Native American Land Use Practices	22
Digital	n/a	Lara Noldner	State National Register Nomination Review Committee	February 12	Ancient Burial Site and Human Remains Protections in Iowa: Purposes, Laws and Processes	25
Digital	n/a	Cherie Haury-Artz	Grant Wood AEA	February 13	Archaeology: Fitting the Pieces Together	9
Digital	n/a	Cherie Haury-Artz	Grant Wood Area Education Agency	February 14	Archaeology: Fitting the Pieces Together	9
Digital	n/a	Cherie Haury-Artz	Prairie Hill Elementary	March 9	Cycles of the Seasons: Meskwaki Then and Now	72
Digital	n/a	Cherie Haury-Artz	Prairie Hill Elementary	March 23	Cycles of the Seasons: Meskwaki Then and Now	72
Digital	n/a	Cherie Haury-Artz	Connected for Life for Atrium Village	March 23	Crops of Ancient Iowa	7
Digital	n/a	Cherie Haury-Artz	Prairie Ridge Elementary	March 26	Cycles of the Seasons: Meskwaki Then and Now	72
Digital	n/a	Bryan Kendall	Sanford Museum; Northwest Chapter of the Iowa Archaeological Society	April 7	Geomorphology, Stratigraphy and Stable Isotopic Analysis of the Dixon Site	15
Digital	n/a	Michael Perry	OSA	April 8	Student interview with an archaeologist	1
Digital	n/a	Cherie Haury-Artz	Prairie Crest Elementary	April 12	Cycles of the Seasons: Meskwaki Then and Now	72
Digital	n/a	Steven Lensink, Lynn Alex	Fort Collins Museum of Discovery	April 14	Discovery Live: Ask an Archaeologist!	30
Digital	n/a	John Doershuk, Seraphina Carey, Diana Garcia	Iowa Archeological Society Spring Meeting	May 22	Digging the Iowa Scene for Sixty Years	65
Digital	n/a	Lara Noldner, Justin Moe	Iowa Archeological Society Spring Meeting	May 22	Post Derecho Mound Assessment	65
Digital	n/a	Michael Perry	Iowa Archeological Society Spring Meeting	May 22	Keg Creek Archaeology Revisited: The U.S. 34 Johnson Farm Excavations	65
Digital	n/a	Elizabeth Reetz	Iowa Archeological Society Spring Meeting	May 22	Connected for Life: New Interactive Media	65
Digital	n/a	Cherie Haury-Artz, Amanda Lensing	Connected for Life for the Iowa City Senior Center	June 10	Crops of Ancient Iowa	24

## Appendix B: Public Presentations and Media Events, Fiscal Year 2021

County	Location	Staff Member	Sponsor	Date	Topic/Title	Audience
Dubuque	Little Maquoketa River Mounds State Preserve	Lara Noldner	Dubuque County Conservation	June 10	Iowa's Burial Laws and Bioarchaeology Program	20
Digital	n/a	Cherie Haury-Artz, Amanda Lensing	Connected for Life for the North Liberty Library Senior Center	June 18	Crops of Ancient Iowa	9
Digital	n/a	Cherie Haury-Artz, Amanda Lensing	Connected for Life for Vintage Cooperative of Coralville	June 22	Crops of Ancient Iowa	9
Digital	n/a	Cherie Haury-Artz, Amanda Lensing	Connected for Life for Highland Ridge	June 23	Crops of Ancient Iowa	10
Digital	n/a	Cherie Haury-Artz, Amanda Lensing	Connected for Life for Melrose Meadows	June 28	The 1837 Iowa Map	12

AEA = Area Education Agency

## Appendix C: Presentations at Professional Meetings, Fiscal Year 2021

[illegible]

## Appendix D: Publications, Fiscal Year 2021

Staff Member	Publication Venue	Title	Publication Date
Collison, Patrick J. and John F. Doershuk	<i>Journal of the Iowa Archaeological Society</i> 68:48–58.	Vertebrate Faunal Remains from The Mini-Wakan Site: A Preliminary Report	2021
Davis, Warren	<i>Journal of the Iowa Archeological Society</i> 68:72–74	Review of “People and Culture in Ice Age Americas: New Dimensions in Paleoamerican Archaeology” edited by Rafael Suarez and, Ciprian F. Ardelean	2021
Doershuk, John F.	<i>Central States Archaeological Journal</i> 67:208–209	Northwest Iowa Prairie Lakes Woodland Pottery	2020
Doershuk, John F., and Seraphina Carey	<i>Newsletter of the Iowa Archeological Society</i> 71(1): 2–2	Polk County Conservation Plans Archaeological Exhibit Featuring Yellow Banks Artifacts	2021
Green, William	<i>Central States Archaeological Journal</i> 67:182-183	A Caddo-Style Cahokian Bottle from Northwest Iowa	2020
Green, William	<i>Central States Archaeological Journal</i> 67:214-216	The Toolesboro Dog-Paw Pot: A Unique Middle Woodland Vessel	2020
Green, William, J. Stoltman, G. Holley, C. Strong, J. Ferguson, and J. Tiffany	<i>Plains Anthropologist</i> 66:86-119	Caddo or Cahokian? Stylistic and Compositional Analyses of a Fine-Engraved Vessel from Northwest Iowa	2021
Green, William, A. Wiewel, and S. DeVore	<i>American Antiquity</i> 86: 305-326	Geophysical Detection and Assessment of Leveled Mounds: An Example from the Upper Mississippi Valley	2021
Hedden, John G.	<i>Journal of the Iowa Archaeological Society</i> 68:64–68.	Review of “Household Economy at Wall Ridge: A Fourteenth Century Central Plains Tradition Farmstead in the Missouri Valley” edited by Stephen Lensink, Joseph Tiffany, and Shirley Schermer	2021
Lensink, Stephen C., Joseph A. Tiffany, and Shirley J. Schermer, editors	University of Utah Press	<i>Household Economy at Wall Ridge: A Fourteenth Century Central Plains Tradition Farmstead in the Missouri Valley</i> (14 chapters)	2020
Mack, Jennifer E.	Ph.D. dissertation, United Kingdom. University of Exeter, United Kingdom	What Hope Lies Buried Here: Differential Mortality and Mortuary Treatment of Adolescents in Dubuque’s Third Street Cemetery	2020
Mack, Jennifer E.	<i>Journal of the Iowa Archaeological Society</i> 68:1–17.	The Sioux City South Ravine Burial Site (13WD216): The “Unknown 15” Lost and Found.	2021
Mack, Jennifer E. and Dustin S. Clarke	<i>The Annals of Iowa</i>	Working Hard and Living Out: Adolescence in Nineteenth Century Dubuque	2020
Perry, Michael J.	<i>Journal of the Iowa Archaeological Society</i> 68:68–70.	Review of “Feeding Cahokia: Early Agriculture in the North American Heartland” by Gayle Fritz	2021
Peterson, Cynthia L.	<i>Journal of the Iowa Archaeological Society</i> 68:18–47.	Archaeology of Iowa’s Abandoned Town Sites	2021
Peterson, Cynthia L.	<i>Newsletter of the Iowa Archeological Society</i> 70(1): 3–4	Joanne Peterson Obituary	2020
Reetz, Elizabeth and Cherie Haury-Artz	<a href="https://bit.ly/archaeology_and_EE">https://bit.ly/archaeology_and_EE</a>	Integrating Archaeology and Environmental Education While Teaching Outdoors: A Guide for Iowa Naturalists and School of the Wild Instructors	2021
Reetz, Elizabeth, Cherie Haury-Artz, and Seraphina Carey	<a href="https://bit.ly/OSA_BeyondFood">https://bit.ly/OSA_BeyondFood</a>	Beyond Food: Ancestral Native American Use of Deer and Bison	2021
Reetz, Elizabeth, Cherie Haury-Artz, and Seraphina Carey	<a href="https://bit.ly/1837_loway_Map">https://bit.ly/1837_loway_Map</a>	The 1837 Ioway Map	2021

## Appendix D: Publications, Fiscal Year 2021

Staff Member	Publication Venue	Title	Publication Date
Tiffany, Joseph A.	<i>Journal of the Iowa Archeological Society</i> 68:70–72	Review of “Cahokia in Context: Hegemony and Diaspora” by Charles H. McNutt and Ryan M. Parish	2021
Whittaker, William E.	<i>Midcontinental Journal of Archaeology</i> 45:16–38	Survivorship of Earthworks Mapped by T.H. Lewis in Iowa 1884–1894	2020
Whittaker, William E.	<i>Newsletter of the Iowa Archeological Society</i> 70(2-3): 2–4	Pictographs on an Ioway Gunstock Club and Connections to Iowa Rock Art	2020



## Appendix E: Appointments, Awards, and Service on Boards, Commissions, or Committees, Fiscal Year 2021

Staff Member	Appointment, Award, Board, Commission, or Committee Name	Meeting Location	Duration/ Date	Description
OSA	Excellence in Archaeology and Historic Preservation Award, given by the State Historical Society of Iowa Board of Trustees	n/a	June 2021	OSA was among 14 co-awardees recognizing the Dixon Site Riverbank Stabilization Project as the best archaeology or historic preservation project at the local or state level completed during the previous calendar year. The Iowa Department of Transportation's Location and Environment Bureau was honored as project/nomination lead.
Collins, Angela R.	Assistant Editor, <i>Journal of the Iowa Archeological Society</i>	n/a	annually	assist with layout for the yearly volume
Collins, Angela R.	Webmaster, Midwest Archaeological Conference, Inc.	n/a	annually	assist with updating website content and managing communications and meeting registration functions in coordination with the organization Secretary, treasurer, and President
Doershuk, John F.	Iowa Archeological Society Board (ex officio member)	varies	two times annually	unite those interested in the archaeology of Iowa; foster cooperation among professional and amateur archaeologists; promote the study, investigation, and interpretation of prehistoric and historic remains in Iowa; provide for the dissemination of knowledge and research in archaeology and related disciplines; encourage the recording and preservation of sites and artifacts; and develop a constructive attitude toward these cultural resources through education and public involvement
Doershuk, John F.	Adjunct Associate Professor	Iowa City	academic year 2020–2021	serve as adjunct faculty for University of Iowa Department of Anthropology
Doershuk, John F.	Visiting Lecturer	Mt. Vernon	academic year 2020–2021	serve as lecturer for Cornell College Department of Sociology and Anthropology
Doershuk, John F.	Effigy Mounds National Monument Review Board	varies	at least twice annually	participate in providing oversight to multiple on-going investigations concerning cultural resources compliance issues
Doershuk, John F.	Committee member	monthly	academic year 2020–2021	UI Path Forward 2.0 Task Force on University Engagement/ IowaRISE Advisory Committee
Doershuk, John F.	<i>Midcontinental Journal of Archaeology</i> , Editorial Board	electronically	as needed by Editor	advise Editor on publication issues as needed
Doershuk, John F.	Vice president, National Association of State Archaeologists	electronically	Three years (thru spring 2023)	serve as per Bylaws officer role for organization
Doershuk, John F.	Blood Run National Historic Landmark State Management Team	Larchwood and Rock Rapids	as needed	participate in providing oversight to the on-going master planning process for the long-term protection of ancient human remains and other cultural resources encompassed by the Nation Historic Landmark
Doershuk, John F.	President, Midwest Archaeological Conference, Inc.	variable	two years: Fall 2019–Fall 2020	serve as per Bylaws officer role for organization; past president thru fall 2021
Hawkins, Alan J.	Iowa Archeological Society Board (Membership Secretary/Treasurer)	varies	at least twice annually	unite those interested in the archaeology of Iowa; foster cooperation among professional and amateur archaeologists; promote the study, investigation, and interpretation of prehistoric and historic remains in Iowa; provide for the dissemination of knowledge and research in archaeology and related disciplines; encourage the recording and preservation of sites and artifacts; and develop a constructive attitude toward these cultural resources through education and public involvement

## Appendix E: Appointments, Awards, and Service on Boards, Commissions, or Committees, Fiscal Year 2021

Staff Member	Appointment, Award, Board, Commission, or Committee Name	Meeting Location	Duration/ Date	Description
Haury-Artz, Chérie	Iowa Archeological Society Board	varies	at least twice annually and much e-mail discussion	unite those interested in the archaeology of Iowa; foster cooperation among professional and amateur archaeologists; promote the study, investigation, and interpretation of prehistoric and historic remains in Iowa; provide for the dissemination of knowledge and research in archaeology and related disciplines; encourage the recording and preservation of sites and artifacts; and develop a constructive attitude toward these cultural resources through education and public involvement
Haury-Artz, Chérie	Iowa Archeological Society Certification Program	varies	contact with participants through e-mail	assist members of the Iowa Archeological Society to obtain training and certification in field, laboratory, and site recording categories.
Haury-Artz, Chérie	Plains Anthropological Society Board Member - Secretary	varies	once annually at Plains Conference plus contact through e-mail	promotes the study of the peoples and cultures of the North American Great Plains. The Society supports the growth of knowledge concerning the physical, cultural, archaeological and linguistic variation and evolution of Plains societies. The organization disseminates research results through publication of the <i>Plains Anthropologist</i> , a quarterly, peer-reviewed academic journal and memoir series, and through the exchange of information and ideas at its annual conference. The Society actively encourages and recognizes excellence in scholarship, service to the anthropological community and the maintenance of research collections.
Haury-Artz, Chérie	Native American Council	UCC bldg. room 2520C	On-going membership. Groups meets twice a month – alternate Fridays	promotes and improves the quality of life of Native American faculty, staff, and students at the University of Iowa. The goals of the NAC are to: address the diverse needs and concerns of Native Americans on campus; act as a voice for Native faculty, staff, and students; serve as a formalized liaison between Native staff and faculty, and students, and the greater University of Iowa communities; and support university efforts towards recruitment, retention of Native faculty, staff and graduation of students.
Kendall, Bryan	Washington Historic Preservation Commission, Chairperson (thru 2022)	Washington	monthly	promotes preservation education in Washington and is responsible for identifying, researching, and recording information about historic buildings, districts, structures, landscapes, objects, and archeological sites.
Kendall, Bryan	StateMap Advisory Committee	Iowa City	annually	provides guidance for the Iowa Geological Survey surficial and bedrock mapping program
Lensink, Stephen C.	Adjunct Assistant Professor	Iowa City	academic year 2020–2021	serve as adjunct faculty for University of Iowa Department of Anthropology
Noldner, Lara K.	Adjunct Assistant Professor	Iowa City	academic year 2020-2021	serve as adjunct faculty for the University of Iowa Department of Anthropology
Noldner, Lara K.	Iowa Archeological Society Board	varies	at least twice annually	unite those interested in the archaeology of Iowa; foster cooperation among professional and amateur archaeologists; promote the study, investigation, and interpretation of prehistoric and historic remains in Iowa; provide for the dissemination of knowledge and research in archaeology and related disciplines; encourage the recording and preservation of sites and artifacts; and develop a constructive attitude toward these cultural resources through education and public involvement
Peterson, Cynthia L.	Association of Iowa Archaeologists, President	varies	annually	promulgates public understanding and scientific interest in Iowa archaeology through sponsorship of field trips, meetings, and publications on the archaeology of Iowa, and it develops professional and scientific standards for report preparation, excavation, and curation of archaeological materials recovered in the State of Iowa.
Reetz, Elizabeth C.	Project Archaeology, Iowa State Coordinator	varies, nationwide	biennially	act as a liaison between the national Project Archaeology network and leadership team and Iowa's Project Archaeology master teachers

## Appendix E: Appointments, Awards, and Service on Boards, Commissions, or Committees, Fiscal Year 2021

Staff Member	Appointment, Award, Board, Commission, or Committee Name	Meeting Location	Duration/ Date	Description
Reetz, Elizabeth C.	Project Archaeology, Leadership Team Member	varies, nationwide	biennially	provide expert advice the national program, help plan and conduct the national conference, guide curriculum development, and work through other issues as needed.
Reetz, Elizabeth C.	Society for American Archaeology, Public Education Committee Chairperson	varies, nationwide	annually	provide expert advice to the Board on public education and outreach to carry out the Society's mission to provide leadership in education about archaeology.
Reetz, Elizabeth C.	Society for American Archaeology, Public Education Committee Network of State Coordinators	varies, nationwide	annually	serve as the Iowa representative as a liaison between the Public Education Committee and organizers of public education at the state level. Provide extra support as the Network's social media co-administrator
Reetz, Elizabeth C.	Iowa Archeological Society Board (Digital Editor)	varies	at least twice annually	unite those interested in the archaeology of Iowa; foster cooperation among professional and amateur archaeologists; promote the study, investigation, and interpretation of prehistoric and historic remains in Iowa; provide for the dissemination of knowledge and research in archaeology and related disciplines; encourage the recording and preservation of sites and artifacts; and develop a constructive attitude toward these cultural resources through education and public involvement
Reetz, Elizabeth C.	Webmaster, Iowa Archeological Society	n/a	varies	edit and update website content in coordination with the Board of Directors
Tiffany, Joseph	Board of Directors member, Iowa Academy of Science	varies, statewide	quarterly	set policy for the Iowa Academy of Science, provide direction to the Executive Director, Iowa Academy of Science
Whittaker, William E.	Editor, <i>Journal of the Iowa Archeological Society</i>	n/a	annually	edited vol. 67 and 68 of the <i>Journal of the Iowa Archeological Society</i>

## Appendix F: OSA Reports, Fiscal Year 2021

Number	Authors	Title
<b>Technical Reports</b>		
1157	Carlson, Richard J.	<i>National Register of Historic Places Nominations for First Avenue East Historic District and First Avenue West Historic District</i>
1192	Kendall, Bryan S.	<i>Phase IA Archaeological Reconnaissance of the Proposed Coal Creek Seasonal Marsh Project, Red Rock Wildlife Area, T77N-R22W, Warren County, Iowa</i>
1218 rev.	Carlson, Richard J.	<i>Phase I Intensive Historic Architectural Survey of Primary Roads Project STP-017-2(27)--2C-08, Des Moines and Jackson Townships, Boone County, Iowa</i>
1342	Collins, Angela R. and Warren Davis	<i>Phase I Intensive Archaeological Investigation of the Proposed VA Hospital Project, Sections 1 and 2, T75N-R20W, Marion County, Iowa</i>
1391	Kendall, Bryan S.	<i>Phase I Intensive Archaeological Investigation of Primary Roads Project BRP-059-1(31)--38-73 (PIN: 16-73-059-010), Fremont and Page Counties, Iowa</i>
1394	Mraz, Veronica A.	<i>Phase I Intensive Archaeological Investigation of the Proposed Otranto Dam Improvements Project, Sections 21 and 28, T100N-R18W, Mitchell County, Iowa</i>
1395	Carlson, Richard J.	<i>Phase I Intensive Historic Architectural Investigation of a Proposed Dam Modification Project for the Otranto Dam, Otranto, Mitchell County, Iowa</i>
1416	Nansel, Blane H.	<i>Letter report of July 13, 2020, to Scott Pottorff regarding BRM-SWAP-8427(602)--SD-48, Cultural Resources Evaluation, City of Williamsburg, Iowa County Local Systems</i>
1422	Nansel, Blane H.	<i>Letter report of July 1, 2020, to Trevor Wolf regarding FHWA No. 323360, Cultural Resources Evaluation, Taylor County Local Systems</i>
1443	Nansel, Blane H.	<i>Letter report of July 6, 2020, to Zachary Gunsolley regarding FEMA Flood Event 4421, Cultural Resources Evaluation, Union County Local Systems</i>
1446	Hawkins, Alan J., and Daniel G. Horgan	<i>Phase I Intensive Archaeological Investigation of the Proposed IM-080-8(321)288--13-82 Project, Scott County, Iowa</i>
1447	Carlson, Richard J.	<i>Phase I Intensive Historic Architectural Survey of Proposed Primary Roads Project IM-080-8(321)288--13-82, Scott County, Iowa. Volume I: Text, Figures, HADB Form, Iowa Site Inventory Forms 82-01537 and 82-06091 to 82-06125</i>
1447	Carlson, Richard J.	<i>Phase I Intensive Historic Architectural Survey of Proposed Primary Roads Project IM-080-8(321)288--13-82, Scott County, Iowa. Volume II: Iowa Site Inventory Forms 82-06126 to 82-06160</i>
1448	Kendall, Bryan S.	<i>Phase I Intensive Archaeological Investigation of the Proposed Ham882515B Wetland Project, Section 15, T88N-R24W, Hamilton County, Iowa</i>
1449	Kendall, Bryan S.	<i>Phase I Intensive Archaeological Investigation of the Proposed Ham862432C Wetland Project, Section 32, T86N-R24W, Hamilton County, Iowa</i>
1456	Nansel, Blane H.	<i>Letter report of July 8, 2020, to Jeffrey Fox regarding BRS-SWAP-C094(126)--FF-94, Cultural Resources Evaluation, Webster County Local Systems</i>
1457	Nansel, Blane H.	<i>Letter report of July 9, 2020, to Jeffrey Fox regarding BRS-SWAP-C094(127)--FF-94, Cultural Resources Evaluation, Webster County Local Systems</i>
1459	Kendall, Bryan S.	<i>Phase I Intensive Archaeological Investigation of the Proposed CRANDIC Wetland Project, Sections 11, 12, and 14, T82N-R08W, Linn County, Iowa</i>
1461	Nansel, Blane H.	<i>Letter report of July 14, 2020, to James King regarding FHWA No. 264950, Cultural Resources Evaluation, Page County Local Systems</i>
1462	Nansel, Blane H.	<i>Letter report of July 16, 2020, to James King regarding FHWA No. 265060, Cultural Resources Evaluation, Page County Local Systems</i>
1463	Nansel, Blane H.	<i>Letter report of July 20, 2020, to Shelby Eick regarding FHWA No. 319280 Cultural Resources Evaluation, Tama County Local Systems</i>
1464	Nansel, Blane H.	<i>Letter report of July 21, 2020, to Shelby Eick regarding FHWA No. 318501 Cultural Resources Evaluation, Tama County Local Systems</i>
1467	Nansel, Blane H.	<i>Letter report of July 23, 2020, to Juli Redmond regarding BROS-SWAP-7710(604)--SE-86 Cultural Resources Evaluation, City of Traer, Tama County Local Systems</i>
1468	Carlson, Richard J.	<i>Intensive Historic Architectural Survey and Evaluation of the Grandview Reservoirs in Sioux City, Woodbury County, Iowa</i>

## Appendix F: OSA Reports, Fiscal Year 2021

Number	Authors	Title
1473	Nansel, Blane H.	<i>Letter report of July 28, 2020, to Dawn Meyer regarding TAP-R-4702(607)--8T-14 Cultural Resources Evaluation, City of Manning, Carroll County Local Systems</i>
1474	Mraz, Veronica A.	<i>Phase I Intensive Archaeological Investigation of the Proposed CREP Hoisington Wetland Project, Section 16, T97N-R15W, Mitchell County, Iowa</i>
1475	Nansel, Blane H.	<i>Letter report of July 30, 2020, to Dallas Schechinger regarding BROS-SWAP-C067(89)--FE-67, Cultural Resources Evaluation, Monona County Local Systems</i>
1476	Nansel, Blane H.	<i>Letter report of July 31, 2020, to Dallas Schechinger regarding BROS-SWAP-C067(90)--FE-67, Cultural Resources Evaluation, Monona County Local Systems</i>
1478	Kendall, Bryan S.	<i>Phase I Intensive Archaeological Investigation of the Proposed Osceola County Rural Water System Expansion Project, DWSRF Project FS-72-19-DWSRF-12, Osceola, Dickinson, and O'Brien Counties</i>
1479	Collins, Angela R.	<i>Winnebago River Water Trail.</i>
1480	Mraz, Veronica A.	<i>Phase I Intensive Archaeological Investigation of a Proposed CREP Wetland Project, Section 9, T93N-R28W, Humboldt County, Iowa</i>
1481	Mraz, Veronica A.	<i>Phase I Intensive Archaeological Investigation of the Proposed Atkins DWSRF Project, Section 14 and 23, T83N-R9W, Benton County, Iowa</i>
1482	Kendall, Bryan S.	<i>Phase IA/Geoarchaeological Survey and Data Recovery Plan of the Proposed WRA Ingersoll Run Outlet Project, Des Moines, Iowa</i>
1483	Nansel, Blane H.	<i>Letter report of August 3, 2020, to Landon Moore regarding L-9-118, Cultural Resources Evaluation, Bremer County Local Systems</i>
1485	Nansel, Blane H.	<i>Letter report of August 6, 2020, to Landon Moore regarding 35012, Cultural Resources Evaluation, Bremer County Local Systems</i>
1486	Nansel, Blane H.	<i>Letter report of August 7, 2020, to Landon Moore regarding BROS-SWAP-C009(53)--SE-09, Cultural Resources Evaluation, Bremer County Local Systems</i>
1489	Collins, Angela R., Christy S. Rickers, and Maria F. Schroeder	<i>Phase I Intensive Archaeological Investigation and Historic Architectural Review of the Proposed GSS Defiance 809342 Tower Project, Section 13, T81N-R39W, Shelby County, Iowa</i>
1490	Mraz, Veronica A.	<i>Phase I Intensive Archaeological Investigation of the Proposed Wiederin Wetland Project, Section 29, T84N-R32W, Greene County, Iowa</i>
1491	Kendall, Bryan S.	<i>Phase IA Archaeological Reconnaissance Investigation for Proposed Fiber Optic Corridors, Dudgeon Lake WMA and Otterville WMA, Benton and Buchanan Counties, Iowa</i>
1492	Davis, Warren D.	<i>Phase I Intensive Archaeological Investigation of the Proposed Carlisle Drinking Water Improvements Project, Section 34, T78N-R23W, Polk County, Iowa</i>
1493	Mraz, Veronica A.	<i>Phase I Intensive Archaeological Investigation of the Proposed Ely Hoosier Creek Trunk Sewer Project, Section 25, 30, 31, T82N-R6W and T82N-R7W, Linn County, Iowa</i>
1494	Mraz, Veronica A.	<i>Phase I Intensive Archaeological Investigation of the Proposed Wapsipinicon Connector Trail Project, Section 11, T84N-R4W, Jones County, Iowa</i>
1495	Nansel, Blane H.	<i>Letter report of August 12, 2020, to Calvin Martin regarding BRM-SWAP-1867(616)--SD-96, Cultural Resources Evaluation, City of Decorah, Winneshiek County Local Systems</i>
1496	Davis, Warren D.	<i>Phase I Intensive Archaeological Investigation of the Proposed Williamsburg CWSRF Project, Section 15, T79N-R10W, Iowa County, Iowa</i>
1497 Vol.1	Carlson, Richard J.	<i>Phase I Intensive Historic Architectural Survey of Primary Roads Project NHSX-052-2(119)--3H-31 (a.k.a., PIN 10-31-052-020-02), Dubuque County, Iowa. Volume I: Text, Figures, HADB Form, Iowa Site Inventory Forms 31-01640, 31-06493, and 31-06509 to 31-06539</i>
1497 Vol.2	Carlson, Richard J.	<i>Phase I Intensive Historic Architectural Survey of Primary Roads Project NHSX-052-2(119)--3H-31 (a.k.a., PIN 10-31-052-020-02), Dubuque County, Iowa. Volume II: Iowa Site Inventory Forms 31-06540 to 31-06570</i>
1498	Davis, Warren D.	<i>Phase I Intensive Archaeological Investigation of Primary Roads Project NHSX-052-2(119)--3H-31, a.k.a., PIN 10-31-052-020-02, Dubuque County, Iowa.</i>



## Appendix F: OSA Reports, Fiscal Year 2021

Number	Authors	Title
1499	Mraz, Veronica A.	<i>Phase I Intensive Archaeological Investigation of the Proposed Little Paint Creek Streambank Restoration Project, Sections 30 and 32, T97N-R3W, Allamakee County, Iowa</i>
1500	Nansel, Blane H.	<i>Letter report of August 13, 2020, to Rick Kloppenburg regarding BRM-SWAP-C020(119)--FE-20, Cultural Resources Evaluation, Clarke County Local Systems</i>
1501	Hawkins, Alan J.	<i>Phase I Intensive Archaeological Investigation of Northern's Proposed Rod Jurgens Farm Tap Upgrade_02134941 Project, Section 4, T87N-R3W, Delaware County, Iowa.</i>
1502	Collins, Angela R., and Maria F. Schroeder	<i>Phase IA Archaeological and Architectural History Reconnaissance of a Proposed Antenna Project (CRAN 002), Knoxville, Marion County, Iowa</i>
1503	Collins, Angela R., and Maria F. Schroeder	<i>Phase IA Archaeological and Architectural History Reconnaissance of a Proposed Antenna Project (CRAN 003), Knoxville, Marion County, Iowa</i>
1504	Collins, Angela R., and Maria F. Schroeder	<i>Phase IA Archaeological and Architectural History Reconnaissance of a Proposed Antenna Project (CRAN 004), Knoxville, Marion County, Iowa</i>
1505	Collins, Angela R., and Maria F. Schroeder	<i>Phase IA Archaeological and Architectural History Reconnaissance of a Proposed Antenna Project (DT CRAN 003), Newton, Jasper County, Iowa</i>
1506	Nansel, Blane H.	<i>Letter report of August 14, 2020, to Craig Davis regarding BROS-SWAP-C028(98)--FF-28, Cultural Resources Evaluation, Delaware County Local Systems</i>
1507	Peterson, Cynthia L.	<i>Annual Report of Cultural Resource Investigations for the Iowa Department of Transportation, Fiscal Year 2020</i>
1508	Mraz, Veronica A.	<i>Phase I Intensive Archaeological Investigation of the Proposed Fort Dodge DWSRF Water Main Replacement Project, Sections 7 and 18, T89N-R28W, and Sections 12-13 and 24, T89N-R29W, Webster County, Iowa</i>
1510	Nansel, Blane H.	<i>Letter report of August 18, 2020, to Juli Redmond regarding BRS-CHBP-C050(128)--GB-50, Cultural Resources Evaluation, Jasper County Local Systems</i>
1511	Nansel, Blane H.	<i>Letter report of August 20, 2020, to Andy Burke regarding STBG-SWAP-4040(612)--SG-63, Cultural Resources Evaluation, City of Knoxville, Marion County Local Systems</i>
1512	Mraz, Veronica A.	<i>Phase I Intensive Archaeological Investigation of the Proposed Slabaugh Frytown Project, Section 13, T78N-R8W, Johnson County, Iowa</i>
1513	Nansel, Blane H.	<i>Letter report of August 26, 2020, to Tom Low regarding STBG-SWAP-7057(705)--SE-97, Cultural Resources Evaluation, City of Sioux City, Woodbury County Local Systems</i>
1514	Collins, Angela R.	<i>Cultural Resources Desktop Evaluation of the Reilly Parcel, Section 13, T81N-R06W, Johnson County, Iowa</i>
1515	Nansel, Blane H.	<i>Letter report of August 28, 2020, to Calvin Martin regarding BROS-SWAP-6142(601)--SE-17, Cultural Resources Evaluation, City of Plymouth, Cerro Gordo County Local Systems</i>
1516	Mraz, Veronica A., and William E. Whittaker	<i>Phase I Intensive Archaeological Investigation of a Proposed Creek Crossing, Croton Unit, Shimek State Forest, Section 1, T66N-R7W, Lee County, Iowa</i>
1517	Nansel, Blane H.	<i>Letter report of August 31, 2020, to Bryon Koster regarding BROS-SWAP-C040(102)--SE-40, Cultural Resources Evaluation, Hamilton County Local Systems</i>
1518	Nansel, Blane H.	<i>Letter report of September 2, 2020, to Bryon Koster regarding BROS-SWAP-C040(103)--SE-40, Cultural Resources Evaluation, Hamilton County Local Systems</i>
1519	Nansel, Blane H.	<i>Letter report of September 8, 2020, to Mindy Moore regarding NRT-C025(116)--9G-25, Cultural Resources Evaluation, Dallas County Local Systems</i>
1520	Whittaker, William E.	<i>Phase I Intensive Archaeological Investigation of the Proposed CC-113-Rath and CC-114-Rath IEDA-CDBG Project, Section 13, T80N-R9W, Iowa County, Iowa</i>

## Appendix F: OSA Reports, Fiscal Year 2021

Number	Authors	Title
1521	Davis, Warren D.	<i>Phase I Intensive Archaeological Investigation of the Proposed 195th Trail Culvert Project, Section 21, T76N-R27W, Madison County, Iowa</i>
1522	Whittaker, William E., and Maria F. Schroeder	<i>Phase I Archaeological and Historic Architecture Investigation of the Proposed 2214 Dillons Furrow Subdivision Project, Section 6, T80N-R5W, Johnson County, Iowa</i>
1523	Peterson, Cynthia L., and John G. Hedden	<i>Draft Interpretive Panel Content for Use at the Glenwood Culture Themed Rest Area on I-29</i>
1525	Whittaker, William E.	<i>Phase IA Archaeological Reconnaissance of the Proposed Vinton Force Mains Project, Benton County, Iowa</i>
1526	Nansel, Blane H.	<i>Letter report of September 14, 2020, to Mindy Moore regarding TAP-U-C094(123)--8I-94, Cultural Resources Evaluation, Webster County Local Systems</i>
1527	Mraz, Veronica A.	<i>Phase I Intensive Archaeological Investigation of the Proposed Cincinnati SAGR Wastewater Expansion Project, Section 4, T67N-R18W, Appanoose County, Iowa</i>
1528	Nansel, Blane H.	<i>Letter report of September 17, 2020, to Juli Redmond regarding FHWA No. 187000, Cultural Resources Evaluation, Ida County Local Systems</i>
1529	Nansel, Blane H.	<i>Letter report of September 18, 2020, to Juli Redmond regarding FHWA No. 186990, Cultural Resources Evaluation, Ida County Local Systems</i>
1530	Nansel, Blane H.	<i>Letter report of September 24, 2020, to Garret Reddish regarding FHWA No. 220850, Cultural Resources Evaluation, Linn County Local Systems</i>
1531	Davis, Warren D., and Angela R. Collins	<i>Additional Archaeological Investigation of Site 13LN352, Section 19, T84N-R8W, Linn County, Iowa</i>
1532	Davis, Warren D.	<i>Phase I Intensive Archaeological Investigation of the Proposed Iowa Army National Guard Camp Dodge Site 1 Project, Section 23, T80N-R25W, Polk County, Iowa</i>
1533	Davis, Warren D.	<i>Phase I Intensive Archaeological Investigation of the Proposed Camp Dodge Site 2 Project, Sections 15 and 22, T80N-R25W, Polk County, Iowa</i>
1534	Mraz, Veronica A.	<i>Phase I Intensive Archaeological Investigation of the Proposed Lake Sugema Campground Project, Sections 15 and 22, T68N-R10W, Van Buren County, Iowa</i>
1535	Davis, Warren D.	<i>Phase I Intensive Archaeological Investigation of the Proposed Ankeny DWSRF Project, T80N-R24W, Polk County, Iowa</i>
1536	Mraz, Veronica A.	<i>Phase I Intensive Archaeological Investigation of the Proposed DeLong Abandoned Mine Land (AML) Reclamation Project, T74N-R18--19W, Marion County, Iowa</i>
1537	Whittaker, William E.	<i>Cultural Resources Desktop Evaluation of the Proposed IEDA-CDBG CC162-163 Coralville Project, Johnson County, Iowa</i>
1538	Nansel, Blane H.	<i>Letter report of September 30, 2020, to Zachary Gunsolley regarding BROS-SWAP-C088(65)--FE-88, Cultural Resources Evaluation, Union County Local Systems</i>
1539	Hawkins, Alan J.	<i>Phase IA Archaeological Reconnaissance of the Proposed Ames Well Field DWSRF Project, Story County, Iowa</i>
1540	Mraz, Veronica A.	<i>Phase I Intensive Archaeological Investigation of the Proposed Lake Ahquabi State Park Renovations Project, Sections 14 and 23, T75N-R24W, Warren County, Iowa</i>
1541	Mraz, Veronica A.	<i>Phase I Intensive Archaeological Investigation of the Proposed Center Point Wastewater Treatment Facilities Upgrades Project, Sections 4, 9, and 16, T85N-R8W, Linn County, Iowa</i>
1542	Mraz, Veronica A.	<i>Phase I Intensive Archaeological Investigation of the Proposed IEDA-CDBG JCSWD Asmussen Rustand Project, Sections 13 and 18, T80N-R7W and T80N-R8W, Johnson County, Iowa</i>
1543	Collins, Angela R., and Maria F. Schroeder	<i>Archaeological and Historic Architectural Review of a Proposed Antenna Collocation Project (DES DSM DT SC11-B), Des Moines, Iowa</i>
1544	Nansel, Blane H.	<i>Letter report of October 1, 2020, to Benjamin Loots regarding BROS-SWAP-C046(74)--8J-46, Cultural Resources Evaluation, Humboldt County Local Systems</i>

## Appendix F: OSA Reports, Fiscal Year 2021

Number	Authors	Title
1545	Mraz, Veronica A.	<i>Phase I Intensive Archaeological Investigation of the Proposed West Des Moines Iowa Army National Guard Project, Section 34, T78N-R25W, Polk County, Iowa</i>
1546	Nansel, Blane H.	<i>Letter report of September 28, 2020, to Jay Davis regarding FHWA No. 239100, Cultural Resources Evaluation, Marion County Local Systems</i>
1547	Nansel, Blane H.	<i>Letter report of October 7, 2020, to Lowell Miller regarding BROS-SWAP-0065(613)--68, Cultural Resources Evaluation, Monroe County Local Systems</i>
1548	Davis, Warren D., and Dustin S. Clarke	<i>Phase I Intensive Archaeological Investigation of the Proposed Dykstra Wetland Project, Section 35, T81N-R22W, Polk County, Iowa</i>
1549	Davis, Warren D.	<i>Phase I Intensive Archaeological Investigation and Phase II Testing of Sites 13CF50 and 13CF131, Primary Roads Project BRFN-030-2(168)--39-24, a.k.a. PIN 18-24-030-010, Crawford County, Iowa</i>
1550	Collins, Angela R., Christy S. Rickers, and Maria F. Schroeder	<i>Phase I Intensive Archaeological Survey and Historic Architectural Review of the Proposed Hornick (W20121) Tower Project, Section 20, T86N-R45W, Woodbury County, Iowa</i>
1551	Mraz, Veronica A.	<i>Phase I Intensive Archaeological Investigation of the Proposed Pocahontas Water Main DWSRF Project, Pocahontas County, Iowa</i>
1552	Nansel, Blane H.	<i>Letter report of October 8, 2020, to Ryan Schock regarding FHWA No. 135150, Cultural Resources Evaluation, Davis County Local Systems</i>
1553	Whittaker, William E.	<i>Phase I Intensive Archaeological Investigation of the Proposed River Bend and King Irving Sewer Separation Phase 3A Project, Des Moines, Polk County, Iowa</i>
1554	Nansel, Blane H.	<i>Letter report of October 13, 2020, to Matthew Jorgensen regarding TAP-R-2305(602)--8T-83, Cultural Resources Evaluation, City of Elk Horn, Shelby County Local Systems</i>
1555	Nansel, Blane H.	<i>Letter report of October 19, 2020, to Brian Meinsma regarding STBG-SWAP-C016(111)--FG-16, Cultural Resources Evaluation, Cedar County Local Systems</i>
1556	Nansel, Blane H.	<i>Letter report of October 19, 2020, to Brian Meinsma regarding BROS-SWAP-C085(H31)--FE-85, Cultural Resources Evaluation, Story County Local Systems</i>
1557	Whittaker, William E.	<i>Phase I Intensive Archaeological Investigation of the Proposed West Ames Card Lock Project, Section 10, T83N-R25W, Boone County, Iowa</i>
1558	Mraz, Veronica A.	<i>Phase I Intensive Archaeological Investigation of the Proposed Lyon and Sioux Water Treatment Plant Project, Section 16, T99N-R48W, Lyon County, Iowa</i>
1559	Collins, Angela R., and Maria F. Schroeder	<i>Archaeological and Historic Architectural Review of a Proposed Pole and Antenna Construction Project (DES DSM DT SC010), Des Moines, Iowa</i>
1560	Collins, Angela R., and Maria F. Schroeder	<i>Archaeological and Historic Architectural Review of a Proposed Pole and Antenna Construction Project (DES DSM DT SC014), Des Moines, Iowa</i>
1561	Collins, Angela R., and Maria F. Schroeder	<i>Archaeological and Historic Architectural Review of a Proposed Pole and Antenna Construction Project (DES DSM DT SC019), Des Moines, Iowa</i>
1562	Collins, Angela R., and Maria F. Schroeder	<i>Archaeological and Historic Architectural Review of a Proposed Pole and Antenna Construction Project (DES DSM DT SC022), Des Moines, Iowa</i>
1563	Collins, Angela R., and Maria F. Schroeder	<i>Archaeological and Historic Architectural Review of a Proposed Pole and Antenna Construction Project (DES DSM DT SC025), Des Moines, Iowa</i>
1565	Collins, Angela R., and Maria F. Schroeder	<i>Archaeological and Historic Architectural Review of a Proposed Pole and Antenna Construction Project (DES DSM DT SC034), Des Moines, Iowa</i>
1566	Collins, Angela R., and Maria F. Schroeder	<i>Archaeological and Historic Architectural Review of a Proposed Pole and Antenna Construction Project (DES WDM SC217), West Des Moines, Iowa</i>

## Appendix F: OSA Reports, Fiscal Year 2021

Number	Authors	Title
1567	Nansel, Blane H.	<i>Letter report of October 29, 2020, to Steve Cox regarding BROS-SWAP-C038(122)--SE-38, Cultural Resources Evaluation, Grundy County Local Systems</i>
1568	Nansel, Blane H.	<i>Letter report of October 29, 2020, to Mark Thompson regarding BROS-SWAP-C021(145)--FE-21, Cultural Resources Evaluation, Clay County Local Systems</i>
1569	Whittaker, William E.	<i>Cultural Resources Desktop Evaluation of the Proposed Franklin Heights Subdivision Project, Council Bluffs, Pottawattamie County, Iowa</i>
1570	Kendall, Bryan S.	<i>Phase IA Archaeological Investigation of the Proposed Green Pastures Wetland Restoration Project, Section 12, T99N-R37W, Dickinson County, Iowa</i>
1571	Kendall, Bryan S.	<i>Phase I Archaeological Survey of the Proposed McDowell Spring Wetland Restoration Project, Section 12, T99N-R36W, Dickinson County, Iowa</i>
1572	Kendall, Bryan S.	<i>Phase I Intensive Archaeological Investigation of the Proposed Garlock Slough WMA Water Pump Installation Project, Section 35, T99N-R37W, Dickinson County, Iowa</i>
1573	Whittaker, William E.	<i>Phase IA Archaeological Reconnaissance Investigation of the Proposed Wapsipinicon State Park Streambank Stabilization and Boat Ramp Repair Project, Sections 10 and 11, T84N-R4W, Jones County, Iowa</i>
1574	Mraz, Veronica A.	<i>Phase I Intensive Archaeological Investigation of the Proposed IEDA-CDBG Boyle 116-117 Project, Section 12, T80N-R9W, Iowa County, Iowa</i>
1575	Nansel, Blane H.	<i>Letter report of November 29, 2020, to Mindy Moore regarding Boone County TAP, Cultural Resources Evaluation, Boone County Local Systems</i>
1576	Davis, Warren D., and Dustin S. Clarke	<i>Phase I Intensive Archaeological Investigation of the Proposed Slater Water Treatment Improvements Project, Story and Boone Counties, Iowa</i>
1577	Nansel, Blane H.	<i>Letter report of November 6, 2020, to Bradley Skinner regarding FHWA No. 64780, Cultural Resources Evaluation, Appanoose County Local Systems</i>
1578	Nansel, Blane H.	<i>Letter report of November 13, 2020, to Bradley Skinner regarding BROS-SWAP-C004(105)--FE-04, Cultural Resources Evaluation, Appanoose County Local Systems</i>
1579	Nansel, Blane H.	<i>Letter report of November 17, 2020, to Tim Sheets regarding BROS-SWAP-C001(113)--SE-01, Cultural Resources Evaluation, Adair County Local Systems</i>
1583	Mraz, Veronica A.	<i>Phase I Intensive Archaeological Investigation of the Proposed Wood Pond CC-129 Project, Section 30, T80N-R8W, Johnson County, Iowa</i>
1584	Mraz, Veronica A.	<i>Phase I Intensive Archaeological Investigation of the Proposed Buffalo Creek Development Project, Section 21, T80N-R7W, Johnson County, Iowa</i>
1585	Mraz, Veronica A.	<i>Phase I Intensive Archaeological Investigation of the Proposed Grimes Wastewater Treatment Sewer Project, Dallas and Polk Counties, Iowa</i>
1586	Davis, Warren D.	<i>Phase I Intensive Archaeological Investigation of the Proposed Jamaica DWSRF Project, Section 11, T81N-R30W, Guthrie County, Iowa</i>
1587	Nansel, Blane H.	<i>Letter report of November 24, 2020, to Jeremy Abbas regarding FHWA No. 54520, Cultural Resources Evaluation, Wright County Local Systems</i>
1588	Nansel, Blane H.	<i>Letter report of November 25, 2020, to Jeremy Abbas regarding FHWA No. 54530, Cultural Resources Evaluation, Wright County Local Systems</i>
1589	Whittaker, William E.	<i>Cultural Resources Desktop Evaluation of the Proposed Big Creek State Park Boat Storage Lot Project, Section 15, T81N-R25W, Polk County, Iowa</i>
1590	Mraz, Veronica A.	<i>Phase I Intensive Archaeological Investigation of the Proposed Ely Hoosier Creek Trunk Sewer Project, T82N-R6W and T82N-R7W, Linn County, Iowa</i>
1591	Nansel, Blane H.	<i>Letter report of December 1, 2020, to Bruce Dieken regarding L-C042(9040)--73-42, Cultural Resources Evaluation, Hardin County Local Systems</i>
1592	Mraz, Veronica A.	<i>Phase I Intensive Archaeological Investigation of Proposed Ingham Lake and Swan Lake Improvements, Emmet County, Iowa</i>
1593	Mraz, Veronica A.	<i>Phase I Intensive Archaeological Investigation of the Proposed Virgin Lake Parking Lot Project, Section 29, T96N-R34W, Palo Alto County, Iowa</i>
1594	Mraz, Veronica A.	<i>Phase I Intensive Archaeological Investigation of the Proposed Ventura DWSRF Water Treatment Plant Project, Section 17, T96N-R22W, Cerra Gordo County, Iowa</i>
1595	Whittaker, William E.	<i>Phase I Intensive Archaeological Investigation of the Proposed Elkhart DWSRF Project, Polk County, Iowa</i>
1596	Mraz, Veronica A.	<i>Phase I Intensive Archaeological Investigation of the Proposed Timmons Grove Park Shower Project, Section 13, T84N-R19W, Marshall County, Iowa</i>

## Appendix F: OSA Reports, Fiscal Year 2021

Number	Authors	Title
1597	Davis, Warren D.	<i>Phase I Intensive Archaeological Investigation of the Proposed Alliant Energy Des Moines River Crossing Project, Section 34, T82N-R26W, Boone County, Iowa</i>
1598	Collins, Angela R., and Maria F. Schroeder	<i>Phase I Intensive Archaeological Investigation and Architecture History Review of the Proposed Delaware County E-911 Tower Project, Section 30, T89N-R5W, Delaware County, Iowa</i>
1599	Davis, Warren D.	<i>Phase IA Archaeological Reconnaissance of the Proposed Otter Creek Restoration Project, Sections 30 and 31, T84N-R14W, Tama County, Iowa</i>
1600	Nansel, Blane H.	<i>Letter report of December 3, 2020, to Tyler Sparks regarding FM-C085(161)--55-85, Cultural Resources Evaluation, Story County Local Systems</i>
1601	Kendall, Bryan S.	<i>Phase IA Archaeological Investigation of Proposed Three Mile Lake Improvement Project, T73N-R29W and T73N-R30W, Union County, Iowa</i>
1602	Mraz, Veronica A.	<i>Phase I Intensive Archaeological Investigation of the Proposed Little Paint Creek Streambank Restoration Project, Section 30, T97N-R3W, Allamakee County, Iowa</i>
1603	Nansel, Blane H.	<i>Letter report of December 21, 2020, to Jordan Denman regarding TAP-U-4797(625)--8I-64, Cultural Resources Evaluation, City of Marshalltown, Marshall County Local Systems</i>
1604	Kendall, Bryan S.	<i>Phase I Intensive Archaeological Investigation of the Proposed Coal Creek Seasonal Marsh Levee and Geoarchaeological Survey of the Proposed Marsh Impoundment, Red Rock Wildlife Area, T77N-R22W, Warren County, Iowa</i>
1605	Nansel, Blane H.	<i>Letter report of December 7, 2020, to Dillon Davenport regarding FHWA No. 137720, Cultural Resources Evaluation, Decatur County Local Systems</i>
1606	Nansel, Blane H.	<i>Letter report of December 9, 2020, to John Murray regarding BROS-SWAP-C019(107)--FE-19, Cultural Resources Evaluation, Chickasaw County Local Systems</i>
1607	Nansel, Blane H.	<i>Letter report of February 15, 2021, to Ryan Weidemann regarding SBRFM-C040(A271)--5D-40, Cultural Resources Evaluation, Hamilton County Local Systems</i>
1608	Collins, Angela R., and Maria F. Schroeder	<i>Phase IA Archaeological and Historic Architectural Review of a Proposed Pole and Antenna Construction Project (DES DSM DT SC006), Des Moines, Iowa</i>
1609	Collins, Angela R., and Maria F. Schroeder	<i>Phase IA Archaeological and Architectural History Reconnaissance of a Proposed Pole and Antenna Construction Project (DES DSM DT SC020), Des Moines, Iowa</i>
1610	Collins, Angela R., and Maria F. Schroeder	<i>Phase IA Archaeological and Architectural History Reconnaissance of a Proposed Pole and Antenna Construction Project (DES DSM DT SC024), Des Moines, Iowa</i>
1611	Davis, Warren D., and Maria F. Schroeder	<i>Phase IA Archaeological and Historic Architectural Review of the Proposed Indianola CRAN 03B Antenna Node Project, Warren County, Iowa</i>
1612	Davis, Warren D., and Maria F. Schroeder	<i>Phase IA Archaeological and Historic Architectural Review of the Proposed Indianola CRAN 01C Antenna Project, Section 24, T76N-R24W, Warren County, Iowa</i>
1613	Davis, Warren D., and Maria F. Schroeder	<i>Phase IA Archaeological and Historic Architectural Review of the Proposed Indianola CRAN 08E Antenna Project, Section 19, T76N-R23W, Warren County, Iowa</i>
1614	Davis, Warren D., and Maria F. Schroeder	<i>Phase IA Archaeological and Historic Architectural Review of the Proposed Indianola CRAN 06A Antenna Project, Section 19, T76N-R23W, Warren County, Iowa</i>
1615	Davis, Warren D., and Maria F. Schroeder	<i>Phase IA Archaeological and Historic Architectural Review of the Proposed Indianola CRAN 09A Antenna Project, Section 24, T76N-R24W, Warren County, Iowa</i>
1616	Davis, Warren D., and Maria F. Schroeder	<i>Phase IA Archaeological and Historic Architectural Review of the Proposed Indianola CRAN 02C Antenna Project, Section 30, T76N-R23W, Warren County, Iowa</i>



## Appendix F: OSA Reports, Fiscal Year 2021

Number	Authors	Title
1617	Davis, Warren D., and Maria F. Schroeder	<i>Phase IA Archaeological and Historic Architectural Review of the Proposed Indianola CRAN 04B Antenna Node Project, Warren County, Iowa</i>
1618	Davis, Warren D., and Maria F. Schroeder	<i>Phase IA Archaeological and Architectural Reconnaissance of the Proposed Indianola 05D Antenna Project, Warren County, Iowa</i>
1619	Kendall, Bryan S., and Jennifer E. Mack	<i>Phase I Intensive Archaeological Investigation of the Proposed Green Valley Campground Renovation, Sections 23, 26, and 35, T73N-R31W, Union County, Iowa</i>
1620	Kendall, Bryan S.	<i>Additional Phase I Intensive Archaeological Investigation of the Proposed Osceola County Rural Water System Expansion Project, T94N-R39W, O'Brien County, Iowa</i>
1621	Whittaker, William E.	<i>Letter report of November 24, 2020, to Christopher Leary regarding Phase I archaeological survey of the Luverne BL pipeline replacement project, Lyon County, Iowa</i>
1622	Davis, Warren D.	<i>Phase I Intensive Archaeological Investigation of the Proposed Scott Boulevard Subdivision Project, Iowa City, Johnson County, Iowa</i>
1623	Kendall, Bryan S.	<i>Phase IA Archaeological Reconnaissance of the Proposed Pocahontas Wetland POC9333134D Project, Section 34, T93N-R31W, Pocahontas County, Iowa</i>
1624	Davis, Warren D.	<i>Phase IA Archaeological Reconnaissance of the Proposed Traer Water Treatment Improvements Project, Sections 2, 3, and 10, T85N-R14W, Tama County, Iowa</i>
1625	Mraz, Veronica A.	<i>Phase I Intensive Archaeological Investigation of the Proposed Coralville Central Park Wetland Project, Section 5, T79N-R6W, Johnson County, Iowa</i>
1626	Nansel, Blane H.	<i>Letter report of December 14, 2020, to Jay Davis regarding FHWA No. 240520, Cultural Resources Evaluation, Marion County Local Systems</i>
1627	Nansel, Blane H.	<i>Letter report of January 8, 2021, to Jamie Johll regarding L-881285--73-94, Cultural Resources Evaluation, Webster County Local Systems</i>
1628	Whittaker, William E.	<i>Cultural Resources Desktop Evaluation of the Proposed Elk Run Heights CWSRF Project, Section 33, T89N-R12W, Black Hawk County, Iowa</i>
1629	Nansel, Blane H.	<i>Letter report of January 12, 2020, to J.D. King regarding BRS-SWAP-C087(67)--FF-87, Cultural Resources Evaluation, Taylor County Local Systems</i>
1630	Nansel, Blane H.	<i>Letter report of January 13, 2020, to J.D. King regarding BRS-SWAP-C087(68)--FF-87, Cultural Resources Evaluation, Taylor County Local Systems</i>
1631	Horgen, Daniel G.	<i>Phase I Intensive Archaeological Investigation of the Proposed Anamosa DWSRF Well and Water Main Project, Section 2, T84N-R04W, Jones County, Iowa</i>
1632	Hawkins, Alan J.	<i>Phase I Intensive Archaeological Investigation of the Proposed Dyersville CWSRF Project, Sections 29 and 30, T89N-R02W, Dubuque County, Iowa</i>
1633	Nansel, Blane H.	<i>Letter report of January 19, 2020, to Jack Pope regarding STBG-SWAP-8140, Cultural Resources Evaluation, City of Washington, Washington County Local Systems</i>
1634	Mraz, Veronica A.	<i>Archaeological Desktop Assessment of the Proposed Norwalk Trail Project, Section 12, T77N-R25W, Warren County, Iowa</i>
1635	Mack, Jennifer E., and Bryan S. Kendall	<i>Phase I Intensive Archaeological Investigation of the Proposed Dougherty Wastewater Collection System Project, Section 36, T94N-R19W, Cerro Gordo County, Iowa</i>
1636	Davis, Warren D., and Maria F. Schroeder	<i>Archaeological and Historic Architectural Review of the Proposed Osceola DT CRAN 001A Antenna Node Project, Clarke County, Iowa</i>
1637	Davis, Warren D., and Maria F. Schroeder	<i>Archaeological and Historic Architectural Review of the Proposed Osceola DT CRAN 003B Antenna Node Project, Clarke County, Iowa</i>
1638	Mraz, Veronica A.	<i>Phase I Intensive Archaeological Investigation of the Proposed Melcher-Dallas CWSRF Project, Section 12, T74N-R21W, Marion County, Iowa</i>

## Appendix F: OSA Reports, Fiscal Year 2021

Number	Authors	Title
1639	Kendall, Bryan S.	<i>Phase I Intensive Archaeological Investigation of the Proposed Washington Wellness Park Project, Sections 7, 8 and 18, T75N-R7W, Washington County, Iowa</i>
1640	Whittaker, William E.	<i>Cultural Resources Desktop Evaluation of the Proposed Melloy Property Conservation Project, Section 4, T80N-R6W, Johnson County, Iowa</i>
1641	Nansel, Blane H.	<i>Letter report of January 25, 2020, to Brenda Durbahn regarding STBG-SWAP-8155(760)--SG-07, Cultural Resources Evaluation, City of Waterloo, Black Hawk County Local Systems</i>
1642	Kendall, Bryan S.	<i>Cultural Resources Desktop Evaluation of the Proposed Orchard Hills IEDA Site Certification Project, T72N-R42W, Mills County, Iowa</i>
1643	Kendall, Bryan S.	<i>Archaeological Investigation of the Proposed Orchard Hills IEDA Site Certification Project, T72N-R42W, Mills County, Iowa</i>
1644	Nansel, Blane H.	<i>Letter report of December 30, 2020, to Larry Berns regarding STBG-SWAP-8155(769)--SG-07, Cultural Resources Evaluation, City of Waterloo, Black Hawk County Local Systems</i>
1645	Nansel, Blane H.	<i>Letter report of February 1, 2021, to Craig Davis regarding Delhi Dam Bridge, Cultural Resources Evaluation, Delaware County Local Systems</i>
1646	Nansel, Blane H.	<i>Letter report of February 4, 2021, to Lowell Miller regarding ER-C093(95)--58-93, Cultural Resources Evaluation, Wayne County Local Systems</i>
1648	Nansel, Blane H.	<i>Letter report of February 17, 2021, to Tim Sheets regarding FHWA No. 000530, Cultural Resources Evaluation, City of Audubon, Audubon County Local Systems</i>
1649	Collins, Angela R., and Maria F. Schroeder	<i>Cultural Resources Desktop Evaluation and Historic Architecture Review of the Proposed DES WDM SC095 Antenna Project, Section 18, T78N-R25W, Polk County, Iowa</i>
1650	Hawkins, Alan J.	<i>Phase I Archaeological Survey of the Proposed City of Davenport Water Pollution Control Plant Berm Project, Sections 8 and 9, T77N-R03E, Scott County, Iowa</i>
1651	Davis, Warren D., and Maria F. Schroeder	<i>Phase IA Archaeological and Historic Architectural Review of the Proposed Pole and Antenna (DSM WDM SC031) Construction Project, Section 6, T78N-R25W, Polk County, Iowa</i>
1652	Davis, Warren D., and Maria F. Schroeder	<i>Phase IA Archaeological and Historic Architectural Review of the Proposed Pole and Antenna (DSM DT SC036) Construction Project, Section 4, T78N-R24W, Polk County, Iowa</i>
1653	Davis, Warren D., and Maria F. Schroeder	<i>Phase IA Archaeological and Historic Architectural Review of the Proposed Pole and Antenna (DES WDM SC043) Construction Project, Section 4, T78N-R25W, Polk County, Iowa</i>
1654	Davis, Warren D., and Maria F. Schroeder	<i>Phase IA Archaeological and Historic Architectural Review of the Proposed Pole and Antenna (DES WDM SC089) Construction Project, Section 14, T78N-R26W, Dallas County, Iowa</i>
1655	Davis, Warren D., and Maria F. Schroeder	<i>Phase IA Archaeological and Historic Architectural Review of the Proposed Pole and Antenna (DSM WDM SC107) Construction Project, Section 13, T78N-R26W, Dallas County, Iowa</i>
1656	Nansel, Blane H.	<i>Letter report of February 19, 2021, to Jeff Baltes regarding BRS-SWAP-6940(602)--FE-35, Cultural Resources Evaluation, City of Sheffield, Franklin County Local Systems</i>
1657	Horgen, Daniel G.	<i>Phase I Archaeological Survey of the Proposed DWSRF Cedar Rapids Water Treatment Plant Upgrades Project, Section 15, T83N-R08W, Linn County, Iowa</i>
1659	Davis, Warren D.	<i>Phase IA Archaeological Reconnaissance of the Proposed Waverly CWSRF Project, Sections 2 and 11, T91N-R14W, Bremer County, Iowa</i>
1660	Whittaker, William E.	<i>Overview of Archaeology on Sites Associated with the Lane-Hartley Terrace: Including Lane Farm (13AM104), the Lane Enclosure (13AM200), Hartley Fort (13AM103), Grant Village (13AM201), the Oblong Enclosure (13AM91), and Associated Sites (13AM195, 13AM89)</i>
1661	Whittaker, William E.	<i>Mapping Mounds of Lane Farm (13AM104)</i>
1662	Mraz, Veronica A.	<i>Archaeological Desktop Assessment of the Proposed Farmer's Mutual Telephone Company Reconnect 2 Project, Page and Taylor Counties, Iowa</i>

## Appendix F: OSA Reports, Fiscal Year 2021

Number	Authors	Title
1663	Schroeder, Maria F., and Christy S. Rickers	<i>Phase IA Archaeological and Historic Architectural Review of the Proposed W20537 Grand View Park Antenna Project, Sioux City, Woodbury County, Iowa</i>
1665	Nansel, Blane H.	<i>Letter report of February 24, 2021, to Terry Cole regarding BRM-SWAP-8002(602)--SD-59, Cultural Resources Evaluation, City of Villisca, Montgomery County Local Systems</i>
1666	Nansel, Blane H.	<i>Letter report of February 11, 2021, to Elliott Pennock regarding FHWA No. 020870, Cultural Resources Evaluation, Scott/Clinton Counties Local Systems</i>
1667	Mraz, Veronica A.	<i>Phase I Archaeological Survey of Proposed Drinking Water Improvements, Inwood, Lyon County, Iowa</i>
1668	Nansel, Blane H.	<i>Letter report of March 2, 2021, to Jeff Lucas regarding TAP-T-1425(628)--8V-25, Cultural Resources Evaluation, Polk County Local Systems</i>
1669	Mraz, Veronica A.	<i>Phase I Archaeological Survey of the Proposed Miles CWSRF Project, Section 30, T84N-R6E; Sections 25 and 36, T84N-R5E, Jackson County, Iowa</i>
1670	Nansel, Blane H.	<i>Letter report of March 5, 2021, to Mike Rodwell regarding BROS-SWAP-C062(99)--FE-62, Cultural Resources Evaluation, Mahaska County Local Systems</i>
1671	Nansel, Blane H.	<i>Letter report of March 9, 2021, to Ryan Brennan regarding BROS-SWAP-C007(166)--FF-07, Cultural Resources Evaluation, Black Hawk County Local Systems</i>
1672	Davis, Warren D., and Maria F. Schroeder	<i>Cultural Resources Desktop Evaluation of the Proposed Pole and Antenna (Newton DT CRAN 009) Replacement Project, Section 35, T80N-R19W, Jasper County, Iowa</i>
1673	Mraz, Veronica A.	<i>Phase I Archaeological Survey of the Proposed O'Toole Agricultural Buildings Project, Section 29, T76N-R3W, Muscatine County, Iowa</i>
1675	Nansel, Blane H.	<i>Letter report of March 12, 2021, to Juli Redmond regarding BROS-SWAP-C006(109)--SE-06, Cultural Resources Evaluation, Benton County Local Systems</i>
1676	Nansel, Blane H.	<i>Letter report of March 16, 2021, to Paul Assman regarding FHWA No. 128500, Cultural Resources Evaluation, Crawford County Local Systems</i>
1677	Kendall, Bryan S., and Ryan C. Lange	<i>Phase I Archaeological Survey of the Proposed DIC983634D Jones Wetland Project, Section 34, T98N-R36W, Dickinson County, Iowa</i>
1679	Kendall, Bryan S., and Ryan C. Lange	<i>Phase IA Archaeological Reconnaissance of the Proposed B00852517D Warriner Wetland Project, Section 17, T85N-R25W, Boone County, Iowa</i>
1680	Carlson, Richard J.	<i>Intensive Historic Architectural Survey and Evaluation of a Proposed Sewer Repair and Replacement Project in Correctionville, Woodbury County, Iowa</i>
1681	Mack, Jennifer E.	<i>Phase I Archaeological Survey of the Proposed Krug Subdivision Project, Section 5, T81N-R7W, Johnson County, Iowa</i>
1682	Collins, Angela R., Maria F. Schroeder, and Christy S. Rickers	<i>Phase I Intensive Archaeological Investigation and Historic Architecture Review of the Proposed RSA1 Coin Tower Project, Section 3, T67N-R38W, Page County, Iowa</i>
1683	Mraz, Veronica A.	<i>Phase IA Archaeological Reconnaissance of Proposed Lake Ahquabi State Park Improvements, Sections 14 and 23, T75N-R24W, Warren County, Iowa</i>
1684	Whittaker, William E.	<i>Cultural Resources Desktop Evaluation of the Proposed Lake MacBride North Shore Boat Ramp Parking Lot Extension Project, Section 21, T81N-R6W, Johnson County, Iowa</i>
1685	Schroeder, Maria F., and Christy S. Rickers	<i>Phase I Archaeological Survey of the Proposed Preparation Canyon State Park Kiosk Project, Section 30, T82N-R43W, Monona County, Iowa</i>
1686	Whittaker, William E.	<i>Cultural Resources Desktop Evaluation of the Proposed Wilson Island Improvements Project, Section 10, T77N-R45W, Pottawattamie County, Iowa</i>
1688	Hawkins, Alan J.	<i>Cultural Resources Desktop Evaluation of the Little Maquoketa River, Lytle Creek, and the North Fork Maquoketa River Water Trail Corridors through Delaware, Dubuque, Jackson, and Jones Counties, Iowa</i>
1689	Nansel, Blane H.	<i>Letter report of March 17, 2021, to Steve Cox regarding BROS-SWAP-C038(125)--SE-38, Cultural Resources Evaluation, Grundy County Local Systems</i>

## Appendix F: OSA Reports, Fiscal Year 2021

Number	Authors	Title
1690	Horgen, Daniel G.	<i>Phase I Intensive Archaeological Investigation of the Proposed Nevada Trunk Sewer Project, T83N-R22W, Story County, Iowa</i>
1691	Nansel, Blane H.	<i>Letter report of March 22, 2021, to Dennis Michael regarding FHWA No. 258160, Cultural Resources Evaluation, Muscatine County Local Systems</i>
1692	Nansel, Blane H.	<i>Letter report of March 23, 2021, to Dennis Michael regarding FHWA No. 257901, Cultural Resources Evaluation, Muscatine County Local Systems</i>
1693	Nansel, Blane H.	<i>Letter report of March 24, 2021, to Dennis Michael regarding FHWA No. 257930, Cultural Resources Evaluation, Muscatine County Local Systems</i>
1694	Nansel, Blane H.	<i>Letter report of March 29, 2021, to Dennis Michael regarding FHWA No. 257360, Cultural Resources Evaluation, Muscatine County Local Systems</i>
1695	Nansel, Blane H.	<i>Letter report of April 1, 2021, to Dennis Michael regarding FHWA No. 257430, Cultural Resources Evaluation, Muscatine County Local Systems</i>
1696	Nansel, Blane H.	<i>Letter report of April 2, 2021, to Dennis Michael regarding FHWA No. 258331, Cultural Resources Evaluation, Muscatine County Local Systems</i>
1698	Nansel, Blane H.	<i>Letter report of April 6, 2021, to Thomas Rohe regarding FHWA No. 277300, Cultural Resources Evaluation, Plymouth County Local Systems</i>
1699	Nansel, Blane H.	<i>Letter report of April 8, 2021, to Thomas Rohe regarding FHWA No. 275820, Cultural Resources Evaluation, Plymouth County Local Systems</i>
1700	Nansel, Blane H.	<i>Letter report of April 15, 2021, to Thomas Rohe regarding FHWA No. 275210, Cultural Resources Evaluation, Plymouth County Local Systems</i>
1701	Nansel, Blane H.	<i>Letter report of April 20, 2021, to Thomas Rohe regarding FHWA No. 277130, Cultural Resources Evaluation, Plymouth County Local Systems</i>
1702	Nansel, Blane H.	<i>Letter report of April 27, 2021, to Thomas Rohe regarding FHWA No. 273300, Cultural Resources Evaluation, Plymouth County Local Systems</i>
1703	Mack, Jennifer E., and Dustin S. Clarke	<i>Phase I Archaeological Survey of the Proposed Evans Subdivision Project, Section 29, T80N-R5W, Johnson County, Iowa</i>
1704	Nansel, Blane H.	<i>Letter report of May 4, 2021, to Thomas Rohe regarding FHWA No. 273860, Cultural Resources Evaluation, Plymouth County Local Systems</i>
1705	Nansel, Blane H.	<i>Letter report of May 13, 2021, to Thomas Rohe regarding FHWA No. 271900, Cultural Resources Evaluation, Plymouth County Local Systems</i>
1706	Nansel, Blane H.	<i>Letter report of May 19, 2021, to Thomas Rohe regarding FHWA No. 272930, Cultural Resources Evaluation, Plymouth County Local Systems</i>
1707	Nansel, Blane H.	<i>Letter report of May 21, 2021, to Thomas Rohe regarding LC-050330, Cultural Resources Evaluation, Plymouth County Local Systems</i>
1708	Nansel, Blane H.	<i>Letter report of May 25, 2021, to Thomas Rohe regarding LC-042639, Cultural Resources Evaluation, Plymouth County Local Systems</i>
1709	Kendall, Bryan S.	<i>Phase IA Archaeological Reconnaissance of the Proposed Marengo CWSRF Project, Sections 29 and 30, T81N-R10W, Iowa County, Iowa</i>
1710	Nansel, Blane H.	<i>Letter report of April 13, 2021, to Julie Neebel regarding FHWA No. 002430, Cultural Resources Evaluation, Linn County Local Systems</i>
1711	Davis, Warren D.	<i>Phase I Archaeological Survey of the Proposed Fort Atkinson Well Project, Section 8, T96N-R9W, Winneshiek County, Iowa</i>
1712	Nansel, Blane H.	<i>Letter report of April 19, 2021, to Juli Redmond regarding BROS-SWAP-C018(81)-SE-18, Cultural Resources Evaluation, Cherokee County Local Systems</i>
1713	Whittaker, William E.	<i>Cultural Resources Desktop Evaluation of the Proposed Lake McBride Road NE Reconstruction Project, Lake McBride State Park, Section 28, T81N-R6W, Johnson County, Iowa</i>
1714	Mraz, Veronica A.	<i>Phase I Intensive Archaeological Investigation of the Proposed LaMotte and Andrew Telephone Project, Dubuque County, Iowa</i>
1715	Schroeder, Maria F.	<i>Phase I Archaeological Survey of the Proposed Knoll Ridge Bridge Embankment Project, Section 14, T75N-R28W, Madison County, Iowa</i>
1716	Davis, Warren D.	<i>Additional Phase I Intensive Archaeological Investigation of the Proposed Wapsipinicon State Park Streambank Stabilization Project, Section 11, T84N-R4W, Jones County, Iowa</i>
1717	Nansel, Blane H.	<i>Letter report of April 26, 2021, to Terry Cole regarding BRM-SWAP-6542(607)-SD-60, Cultural Resources Evaluation, City of Rock Rapids, Lyon County Local Systems</i>

## Appendix F: OSA Reports, Fiscal Year 2021

Number	Authors	Title
1718	Nansel, Blane H.	<i>Letter report of April 30, 2021, to Terry Cole regarding BROS-SWAP-2697(630)--SE-56, Cultural Resources Evaluation, City of Fort Madison, Lee County Local Systems</i>
1719	Nansel, Blane H.	<i>Letter report of May 7, 2021, to Terry Cole regarding BROS-SWAP-2697(634)--SE-56, Cultural Resources Evaluation, City of Fort Madison, Lee County Local Systems</i>
1720	Horgen, Daniel G.	<i>Phase I Intensive Archaeological Investigation of Two Proposed Cedar Valley Habitat for Humanity Redevelopment Projects, Cedar Rapids, Linn County, Iowa</i>
1721	Nansel, Blane H.	<i>Letter report of June 4, 2021, to Austin Smith regarding BROS-SWAP-C009(88)--FE-09, Cultural Resources Evaluation, Bremmer County Local Systems</i>
1722	Davis, Warren D.	<i>Phase I Archaeological Survey of the Proposed Humeston Wastewater Treatment Facility Improvement Project, Section 10, T70N-R23W, Wayne County, Iowa</i>
1723	Schroeder, Maria F., and Dustin S. Clarke	<i>Phase I Archaeological Survey of the Proposed Carson Farm Subdivision Project, Sections 19--20, T79N-R6W, Johnson County, Iowa</i>
1724	Schroeder, Maria F.	<i>Phase IA Archaeological and Historic Architectural Reconnaissance of the Proposed Antenna DES DSM DT SC47 - A Project, Des Moines, Polk County, Iowa</i>
1725	Schroeder, Maria F.	<i>Cultural Resources Desktop Evaluation, Chester AMI Monopole Project, Section 10, T100N-R13W, Howard County, Iowa</i>
1726	Schroeder, Maria F.	<i>Cultural Resources Desktop Evaluation, Wallingford AMI Monopole Project, Section 7, T98N-R33W, Emmet County, Iowa</i>
1727	Schroeder, Maria F.	<i>Phase IA Archaeological and Architectural History Reconnaissance of the Proposed Waterville AMI Pole Project, Section 15, T97N-R4W, Allamakee County, Iowa</i>
1729	Collins, Angela R., and Christy S. Rickers	<i>Phase I Intensive Archaeological Investigation of the Proposed Road and Trail Improvements Project at Hitchcock Nature Center Project, Pottawattamie County, Iowa</i>
1730	Kendall, Bryan S.	<i>Supplement to the Phase IA/Geoarchaeological Survey and Data Recovery Plan for the Proposed WRA Ingersoll Run Outlet Project, Des Moines, Iowa</i>
1731	Hawkins, Alan J.	<i>Phase I Archaeological Survey of the Proposed Ida Grove DWSRF Project, Sections 11, 14, and 23, T87N-R4W, Ida County, Iowa</i>
1732	Nansel, Blane H.	<i>Letter report of May 8, 2021, to Austin Smith regarding TAP-R-1590(604)--8T-02, Cultural Resources Evaluation, City of Corning, Adams County Local Systems</i>
1735	Davis, Warren D.	<i>Phase I Archaeological Survey of the Proposed Pikes Peak State Park Campground Improvement Project, Section 35, T95N-R3W, Clayton County, Iowa</i>
1736	Horgen, Daniel G.	<i>Phase I Archaeological Survey of the Proposed Auburn Ridge Subdivision Project, Section 28, T80N-R6W, Johnson County, Iowa</i>
1737	Mraz, Veronica A.	<i>Phase I Archaeological Survey of the Proposed Lake Panorama CIPCO Dam Improvements Project, Sections 10 and 15, T80N-R31W, Guthrie County, Iowa</i>
1738	Mraz, Veronica A.	<i>Phase I Archaeological Survey of the Proposed Silver Lake Shoreline Restoration Project, Sections 28--29, T100N-R38W, Dickinson County, Iowa</i>
1739	Davis, Warren	<i>Additional Phase I Archaeological Survey of the Proposed IEDA Site Certification Project, T72N-R42W, Mills County, Iowa</i>
1740	Schroeder, Maria F.	<i>Phase IA Archaeological and Historic Architectural Review of the Proposed Antenna Project (Ottumwa CRAN-001B), Ottumwa, Wapello County, Iowa</i>
1741	Schroeder, Maria F.	<i>Phase IA Archaeological and Historic Architectural Review of the Proposed Antenna Project (Ottumwa CRAN-002C), Ottumwa, Wapello County, Iowa</i>
1742	Schroeder, Maria F.	<i>Phase IA Archaeological and Historic Architectural Review of the Proposed Antenna Project (Ottumwa CRAN-003A), Ottumwa, Wapello County, Iowa</i>
1743	Schroeder, Maria F.	<i>Phase IA Archaeological and Historic Architectural Review of the Proposed Antenna Project (Ottumwa CRAN-004B), Ottumwa, Wapello County, Iowa</i>
1744	Schroeder, Maria F.	<i>Phase IA Archaeological and Historic Architectural Review of the Proposed Antenna Project (Ottumwa CRAN-005A), Ottumwa, Wapello County, Iowa</i>
1745	Schroeder, Maria F.	<i>Phase IA Archaeological and Historic Architectural Review of the Proposed Antenna Project (OTTUMWA CRAN-006B), Ottumwa, Wapello County, Iowa</i>



## Appendix F: OSA Reports, Fiscal Year 2021

Number	Authors	Title
1746	Schroeder, Maria F.	<i>Phase IA Archaeological and Historic Architectural Review of the Proposed Antenna Project (OTTUMWA CRAN-007C), Ottumwa, Wapello County, Iowa</i>
1747	Schroeder, Maria F.	<i>Phase IA Archaeological and Historic Architectural Review of the Proposed Antenna Project (OTTUMWA CRAN-008F), Ottumwa, Wapello County, Iowa</i>
1748	Schroeder, Maria F.	<i>Phase IA Archaeological and Historic Architectural Review of the Proposed Antenna Project (OTTUMWA CRAN-009B), Ottumwa, Wapello County, Iowa</i>
1749	Schroeder, Maria F.	<i>Phase IA Archaeological and Historic Architectural Review of the Proposed Antenna Project (OTTUMWA CRAN-012A), Ottumwa, Wapello County, Iowa</i>
1750	Schroeder, Maria F.	<i>Phase IA Archaeological and Historic Architectural Review of the Proposed Antenna Project (OTTUMWA CRAN-013A), Ottumwa, Wapello County, Iowa</i>
1751	Schroeder, Maria F.	<i>Phase IA Archaeological and Historic Architectural Review of the Proposed Antenna Project (Ottumwa CRAN-014B), Ottumwa, Wapello County, Iowa</i>
1752	Schroeder, Maria F.	<i>Phase IA Archaeological and Historic Architectural Review of the Proposed Antenna Project (OTTUMWA CRAN-015A), Ottumwa, Wapello County, Iowa</i>
1753	Schroeder, Maria F.	<i>Phase IA Archaeological and Historic Architectural Review of the Proposed Antenna Project (OTTUMWA CRAN-016B), Ottumwa, Wapello County, Iowa</i>
1754	Schroeder, Maria F.	<i>Phase IA Archaeological and Historic Architectural Review of the Proposed Antenna Project (OTTUMWA CRAN-017A), Ottumwa, Wapello County, Iowa</i>
1755	Schroeder, Maria F.	<i>Phase IA Archaeological and Historic Architectural Review of the Proposed Antenna Project (OTTUMWA CRAN-018B), Ottumwa, Wapello County, Iowa</i>
1756	Schroeder, Maria F.	<i>Phase IA Archaeological and Historic Architectural Review of the Proposed Antenna Project (OTTUMWA CRAN-019A), Ottumwa, Wapello County, Iowa</i>
1757	Schroeder, Maria F.	<i>Phase IA Archaeological and Historic Architectural Review of the Proposed Antenna Project (OTTUMWA CRAN-021A), Ottumwa, Wapello County, Iowa</i>
1758	Schroeder, Maria F.	<i>Phase IA Archaeological and Historic Architectural Review of the Proposed Antenna Project (OTTUMWA CRAN-022A), Ottumwa, Wapello County, Iowa</i>
1759	Schroeder, Maria F.	<i>Phase IA Archaeological and Historic Architectural Review of the Proposed Antenna Project (OTTUMWA CRAN-023A), Ottumwa, Wapello County, Iowa</i>
1760	Schroeder, Maria F.	<i>Phase IA Archaeological and Historic Architectural Review of the Proposed Antenna Project (OTTUMWA CRAN-024B), Ottumwa, Wapello County, Iowa</i>
1761	Schroeder, Maria F.	<i>Phase IA Archaeological and Historic Architectural Review of the Proposed Antenna Project (OTTUMWA CRAN-025D), Ottumwa, Wapello County, Iowa</i>
1762	Schroeder, Maria F.	<i>Phase IA Archaeological and Historic Architectural Review of the Proposed Antenna Project (OTTUMWA CRAN-026A), Ottumwa, Wapello County, Iowa</i>
1763	Schroeder, Maria F.	<i>Phase IA Archaeological and Historic Architectural Review of the Proposed Antenna Project (OTTUMWA CRAN-029A), Ottumwa, Wapello County, Iowa</i>
1764	Schroeder, Maria F.	<i>Phase IA Archaeological and Historic Architectural Review of the Proposed Antenna Project (OTTUMWA CRAN-030A), Ottumwa, Wapello County, Iowa</i>
1765	Schroeder, Maria F.	<i>Phase IA Archaeological and Historic Architectural Review of the Proposed Antenna Project (OTTUMWA CRAN-031A), Ottumwa, Wapello County, Iowa</i>
1766	Schroeder, Maria F.	<i>Phase IA Archaeological and Historic Architectural Review of the Proposed Antenna Project (OTTUMWA CRAN-032C), Ottumwa, Wapello County, Iowa</i>