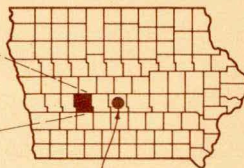
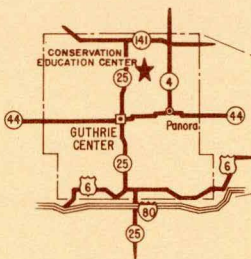


Cn

Conservation Education Center

F
629
.G8
C66
1972

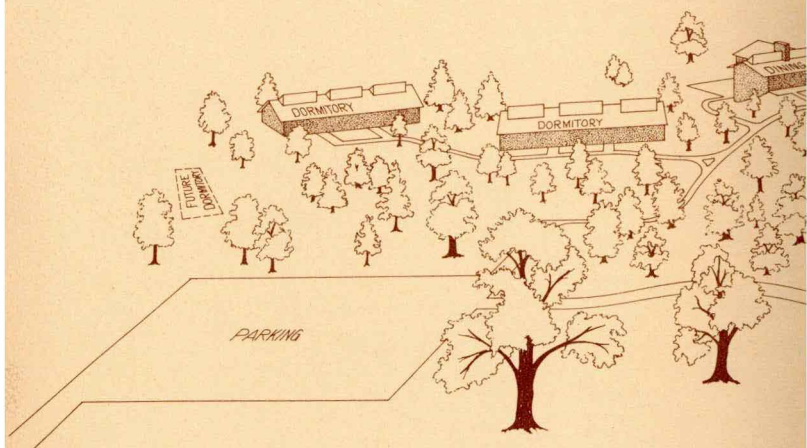


CONSERVATION EDUCATION CENTER

BOX 139

GUTHRIE CENTER, IOWA 50115

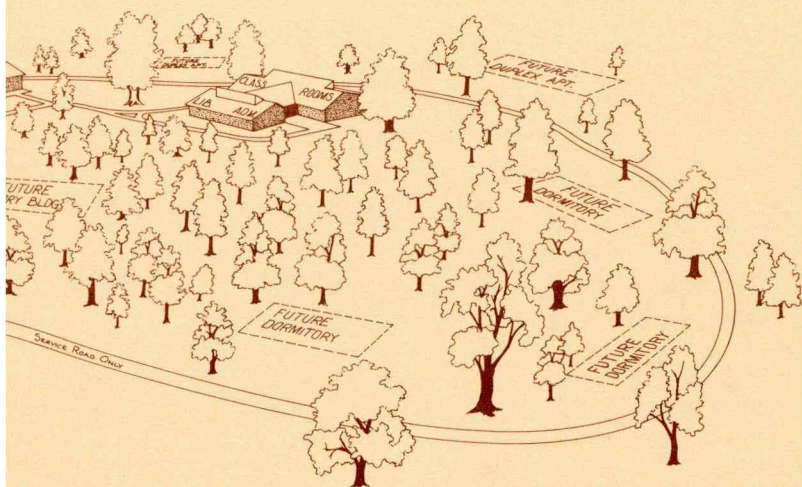
Phone (515) 747-8380



WHAT IS THE CONSERVATION EDUCATION CENTER?

The center, at the present time, is a new four building complex designed to facilitate and enhance the education of teachers, students, conservation personnel, community leaders, other individuals and groups in the principal of conservation and resource use. It is a complete outdoor laboratory for such study.

There are programs such as the Iowa Teachers Conservation Camp, (held each summer and sponsored by the University of Northern Iowa), training for Conservation Commission personnel, high school and grade school outdoor learning experiences, college short courses, seminars by conservation oriented groups, workshops and meetings held by private industry and organizations, and many more programs that continue on a year-round, 12 month basis. The center is available for use throughout the entire year and staffed with personnel to assist any groups that may wish to use the facilities. The states public and private col-



leges and universities may use it during the year for field trips and other programs to assist them in their study of conservation, ecology, and natural resource use. Although its primary use is for environmental education, the center may also be rented by public and private organizations for meetings, conventions and training programs.

WHY A CONSERVATION EDUCATION CENTER?

It is essential that Iowans be aware of their natural heritage and the management practices used to enhance it. It is imperative that our people be given the educational background and experience to take collective action in a positive direction, toward the wise use and conservation of our natural resources. Also, the Conservation Education Center will assist in providing educators and lay people with the knowledge that they need to inform young people on the use of the natural resources at the present

time and for many years to come. If we are to understand and prevent such environmental hazards as soil erosion, pollution, and over use of natural resources, we must have some knowledge of the subjects and experiences in programs to implement practices to cause these problems to cease.

LOCATION

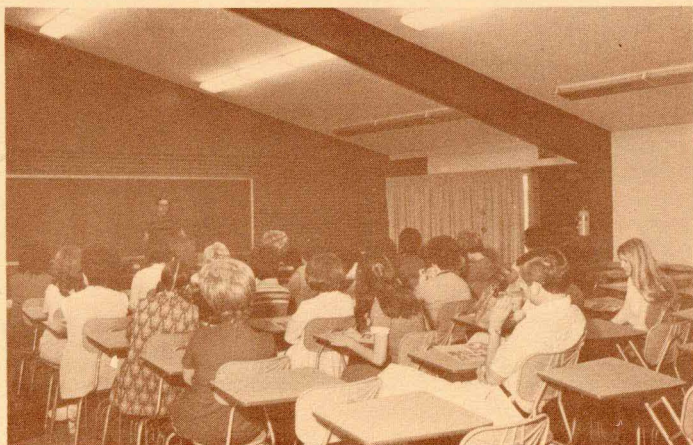
The Conservation Education Center adjoins Springbrook State Park in Guthrie County, about an hours drive from Des Moines. The centers spacious grounds have been molded out of a deciduous forest, making it an excellent site for outdoor education programs. The centers and parks woodlands, brooks, marsh, and lake provide for diversified habitats for the study of the biological, earth, zoological and natural sciences. There is also an original, unplowed state prairie preserve and several state-owned marshes nearby. Located off a main highway, the center provides a place for a group to study, meet or just relax in the solitude of a beautiful setting.

EDUCATIONAL FACILITIES

The center's modern classroom building provides a site for lectures, exhibitions, and class sessions. Its main classroom can seat up to 150 people. Audio-visual equipment is available and in the classroom for use by visitors.

There is ample blackboard space and other basic educational equipment. A portion of this large room can be partitioned off to provide a laboratory. There are lab tables for up to 50 people. The classroom building has a small library where meetings and conferences can be held in quiet.

Possibly the centers most unique educational facility is its setting. Trails radiate out from it, taking visitors to unspoiled natural areas. Students can observe Iowa's native wildlife in its natural habitat. White-tailed deer and other wildlife freely roam through the area. In the future, marked trails and conservation demonstrations areas will be constructed.

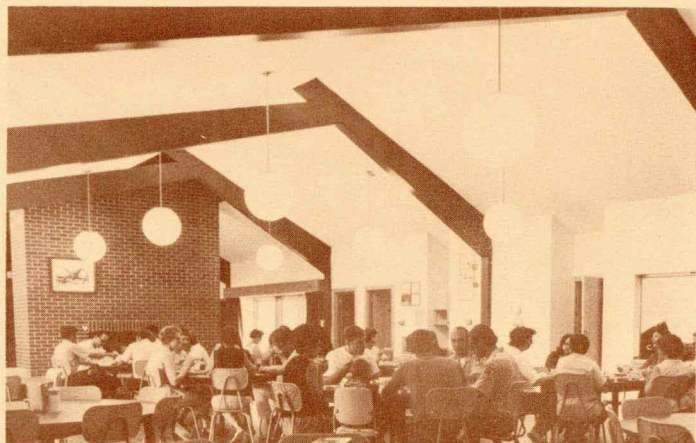


LODGING AND FOOD

Participants in programs held at the center stay in two modern dormitories accommodating a total of 64. There is a spacious lounge in each with couches and tables for reading or studying. The dormitories, like the rest of the buildings at the center, are air conditioned in the summer and heated in the winter. Linen service, blankets and pillows are provided with lodging.



Meals for up to 150 visitors are served in the center's cafeteria. Groups using the center should arrange with the concessionaire for one of three price ranges on meals and dining service. Adjacent to the cafeteria, there is a large lounge complete with a fireplace for informal meetings, reading and just relaxing.



FEES FOR THE CENTER'S USE

Fees for use of the center vary, depending upon the type of group renting it. Priority is placed upon its use by students and consequently they receive reduced rates. Fees for overnight and day use of the center are:

FEE SCHEDULE OVERNIGHT: Per Individual

- \$2.00 School and Youth Groups.
- \$3.00 Teachers and attending a conservation course.
- \$6.00 Conservation oriented non-profit organizations including governmental agencies.
- \$7.00 All others.

Day Use:

- \$30.00 - School and Youth Groups.
- \$40.00 - Teacher Short Courses.
- \$50.00 - Conservation oriented non-profit organizations including governmental organizations.
- \$100.00 - All other groups - (\$50.00 per day or \$1.00 per person up to 50 for dining room lounge buildings only).

There is no day-use charge to groups renting dormitory space. Dormitory fees include the use of the entire facility. Recommended minimum size of group for dormitory is ten (10) persons. However, special arrangements can be made.

For more information contact:

Conservation Education Center
Box 139
Guthrie Center, Iowa 50115
Phone (515) 747-8380.

