

RECREATION ON THE STATE FOREST

HUNTING AND FISHING

The entire forest, except campgrounds, is open to public hunting and provides excellent opportunities for many species including deer, turkey and squirrel. The Croton Unit is excellent for bird watching. The forest contains 4 ponds stocked with panfish, largemouth bass and catfish. Consult DNR regulations for seasons, limits and other rules.



TRAILS

Most recreational development is in the Donnellson, Farmington and Lick Creek Units. The Donnellson and Farmington Units have 25 miles of hiking trails. The Lick Creek Unit has 27 miles of multipurpose trails for horse riding, mountain biking and hiking. All designated trails are mowed and signed. Horses, bikes and snowmobiles must stay on designated trails. **Motorized vehicles are prohibited on all trails.**



CAMPING

The campgrounds accommodate tents, trailers, and RV's and are open year-round except when closed for bad winter road conditions. The Donnellson and Farmington Units contains 2 vehicle accessible campgrounds with 19 campsites plus one backpack campground. The Lick Creek Unit has two equestrian campgrounds with 35 sites. Water is available at the equestrian campgrounds along with hitching posts and corrals. All sites are primitive with no electricity. Picnic tables, fire rings and pit vault latrines are available. Firewood for campfires may be cut from dead and down trees – no standing trees, dead or alive, may be cut for firewood without a permit. A self registration fee is charged at the campgrounds.

NEARBY HISTORICAL AND OUTDOOR SITES

Villages of Van Buren County
Lake Sugema Wildlife Area
Lacey-Keosauqua State Park

Maps and additional information are also available at www.iowadnr.com/forestry/.

State Library Of Iowa
Miller Building
Des Moines, Iowa

Federal regulations prohibit discrimination on the basis of race, color, national origin, or disability. If you believe that you have been discriminated against in any program, activity or facility as described above, or if you desire further information, please write to: Director, DNR, Wallace State Office Building, 502 East Ninth Street, Des Moines, IA 50319-0034.



The Shimek State Forest is administered by the Bureau of Forestry, Division of Conservation and Recreation, Iowa Department of Natural Resources.

Designed by nita upchurch studio / www.nitaupchurchstudio.com

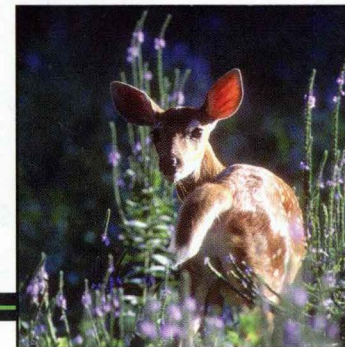


Printed on recycled paper

September 2004
www.iowadnr.com

Shimek

STATE FOREST



FOR INFORMATION CONTACT THE STATE FOREST.

33653 Route J56, Farmington, Iowa 52626

EMAIL: Shimik_Forest@dnr.state.ia.us

PHONE: 319-878-3811

SHIMEK

Shimek State Forest, the jewel of southeast Iowa woodlands, is located in Lee and Van Buren Counties near the towns of Farmington and Keosauqua. The forest began as a base for the Civilian Conservation Corp. (C.C.C.) during the 1930's. Demonstration planting of hardwoods and conifers were completed and now provide stands of large red and white pine which are scattered throughout the oak and hickory hardwoods. Iowa gained ownership to the forest and changed the name to honor Dr. Bohumil Shimek who was an early Iowa conservationist and former head of the University of Iowa Botany Department.

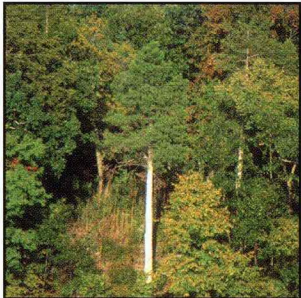
Shimek State Forest is the largest public forest area in southeast Iowa with over 9,000 acres. The forest is divided into 5 units (see maps):

Farmington Unit	2,207 acres
Lick Creek Unit	2,866 acres
Donnellson Unit	1,330 acres
Croton Unit	1,827 acres
Keosauqua Unit	918 acres

MANAGEMENT OF THE FOREST

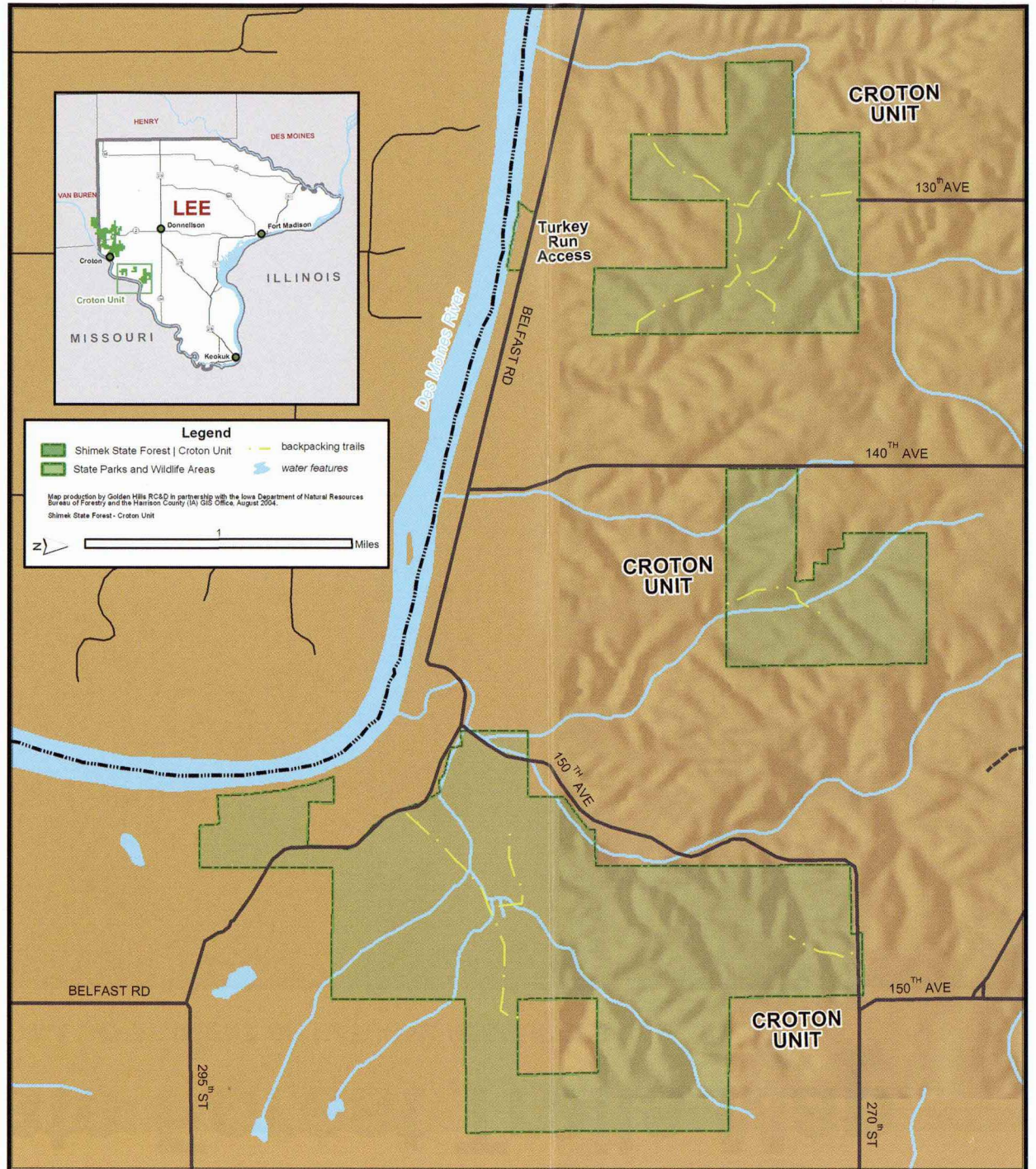
Shimek State Forest is actively managed by the Forestry Bureau of the Iowa Department of Natural Resources to provide timber resources, wildlife habitat and recreational opportunities. The primary mission of Iowa's state forests is to demonstrate sound forest management under the principles of multiple use and sustainability.

The forest is managed through thinning overcrowded trees, harvesting mature, diseased or damaged trees, and planting trees in open areas to create new forests. Regeneration of the native oak-hickory forest is a major management emphasis. The forest is home to numerous wildlife species including deer, turkey, bobcat, squirrel, rabbit and many songbird species.



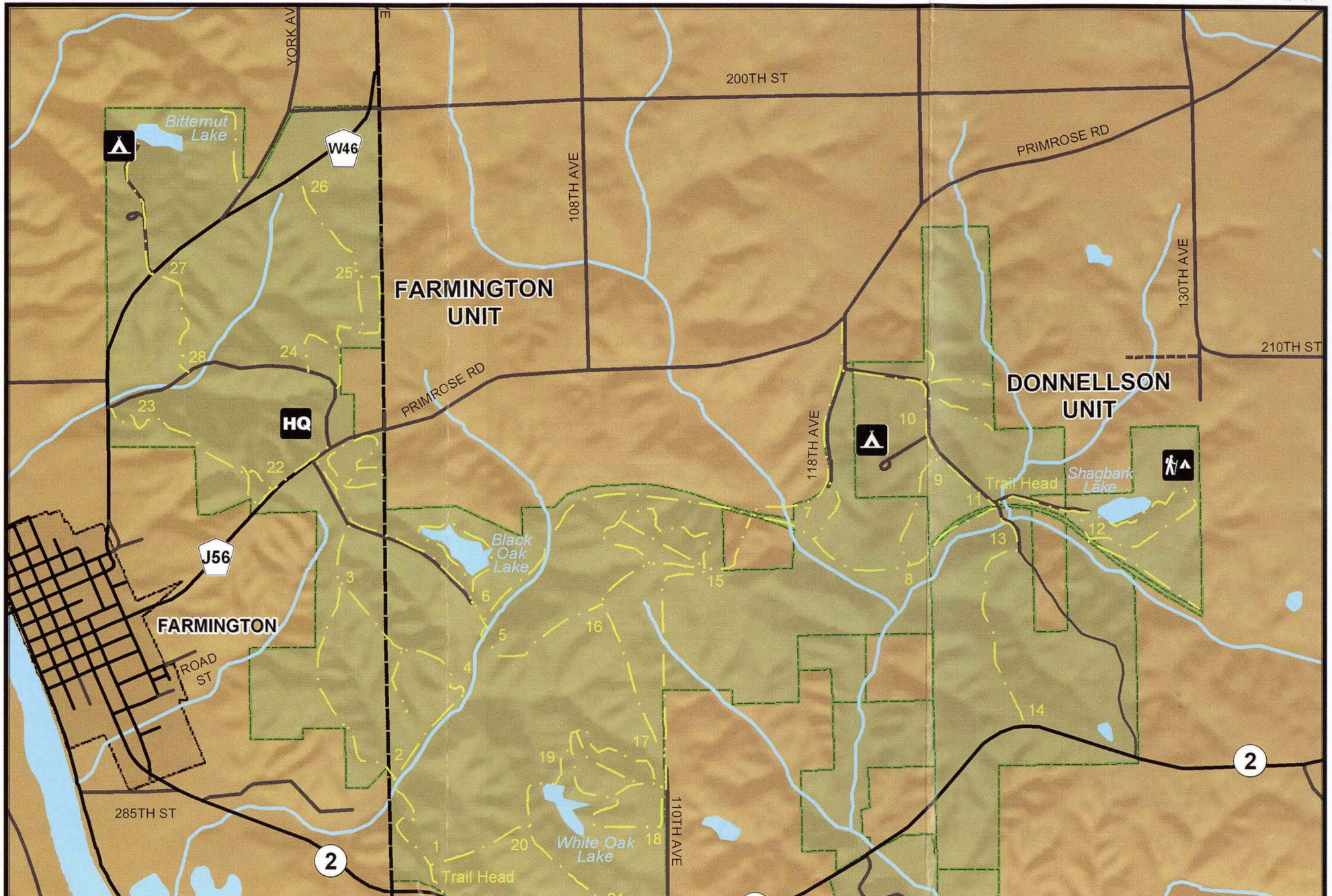
STEVE RAY

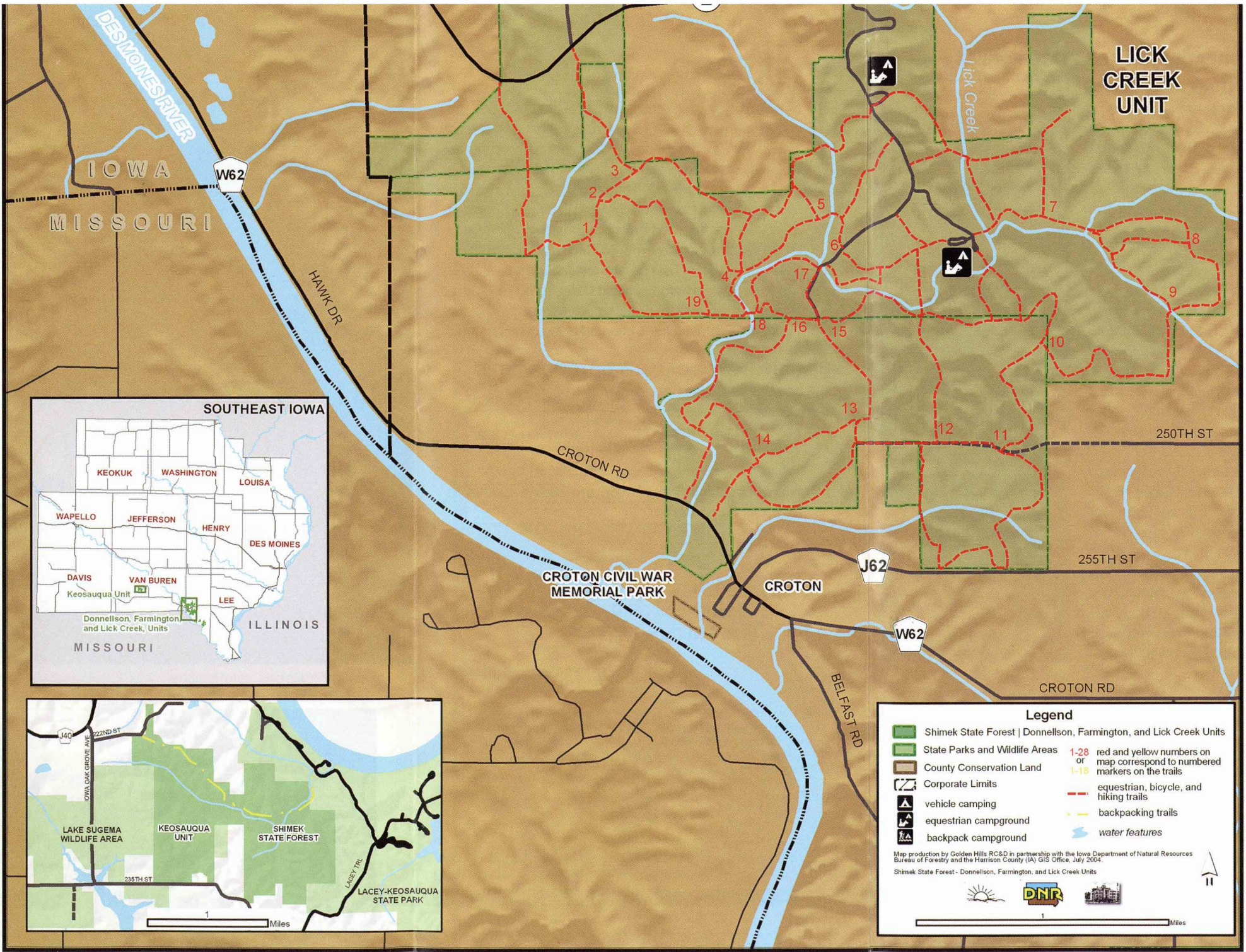
CROTON TRAILS MAP



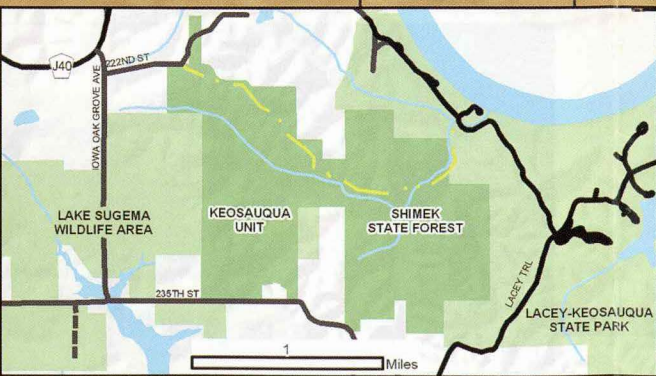
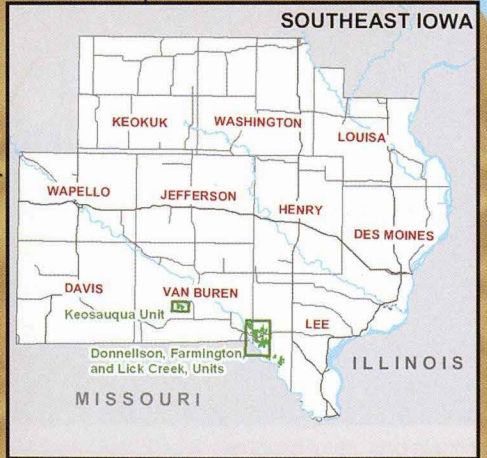
Shimek State Forest Trails Map

DNR IOWA DEPARTMENT OF NATURAL RESOURCES





LICK CREEK UNIT



Legend

- Shimek State Forest | Donnellson, Farmington, and Lick Creek Units
- State Parks and Wildlife Areas
- County Conservation Land
- Corporate Limits
- vehicle camping
- equestrian campground
- backpack campground
- 1-28 red and yellow numbers on map correspond to numbered markers on the trails
- 1-15 equestrian, bicycle, and hiking trails
- backpacking trails
- water features

Map production by Golden Hills RC&D in partnership with the Iowa Department of Natural Resources Bureau of Forestry and the Harrison County (IA) GIS Office, July 2004.
 Shimek State Forest - Donnellson, Farmington, and Lick Creek Units

