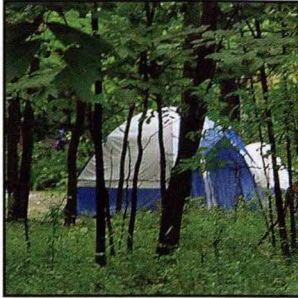


RECREATION ON THE STATE FOREST

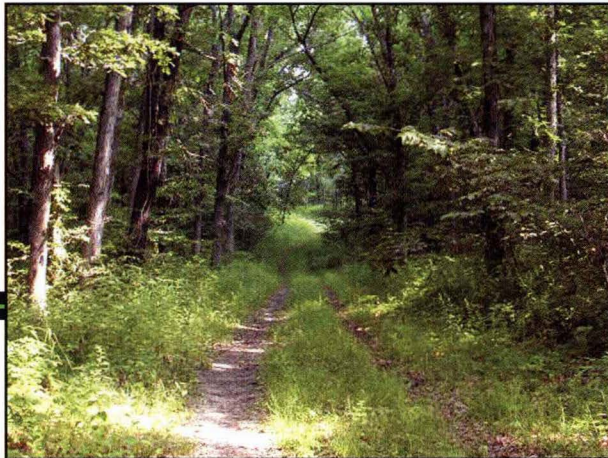
HUNTING AND FISHING

The entire forest (except the campgrounds) is open to public hunting and provides excellent hunting opportunities for many species, especially deer and turkey. There are four large ponds stocked with bluegill, large-mouth bass, and catfish. Consult DNR regulations for seasons, limits, and other rules.



TRAILS

Most of the recreational development is located on the Lucas, Whitebreast, and Woodburn Units. There are 30 miles of trails that are designated for hiking, mountain biking, horseback riding, and snowmobiling. **Motorized vehicles are prohibited on all trails.** The Woodburn Unit has trails designated exclusively for backpacking with pack-in camp sites.



CAMPING

Campgrounds are located in the Lucas and Whitebreast Units. Our 86 campsites are open year-round and will accommodate tents, trailers, and RV's. Of these campsites, 36 are equestrian. **No overflow camping is permitted.** All sites are primitive with no electricity but most have running water. Picnic tables, fire rings and pit vault latrines are available. Firewood for campfires may be cut from dead and down trees – no standing trees, dead or alive, may be felled for firewood without a permit. Campgrounds are administered by the State Park Bureau and a self registration fee is charged (641-774-5632 for more information).

CAMPING RESERVATIONS

To reserve sites call: 877-IAPARKS (877-427-2757)
To reserve sites online: www.reserveiaparks.com

NEARBY POINTS OF INTEREST

Lake Rathbun Cinder Path
Pin Oak Marsh Sedan Bottoms
Soap Creek Wildlife Areas

MODERN CAMPING

Red Haw State Park 641-774-5632
Honey Creek State Park 641-724-3739
Lake Wapello State Park 641-722-3371

Maps and additional information are also available at www.iowadnr.com/forestry/.

Federal regulations prohibit discrimination on the basis of race, color, national origin, sex or handicap. State law prohibits discrimination on the basis of race, color, creed, sex, sexual orientation, gender identity, religion, national origin, or disability. If you believe that you have been discriminated against in any program, activity or facility as described above, or if you desire further information, please write to the Iowa DNR, Wallace State Office Building, 502 E. Ninth St., Des Moines, IA 50319.



The Stephens State Forest is administered by
the Bureau of Forestry, Division of Conservation and Recreation,
Iowa Department of Natural Resources.

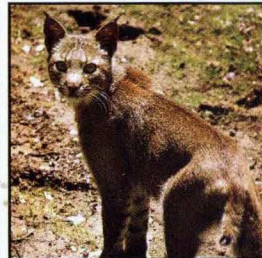
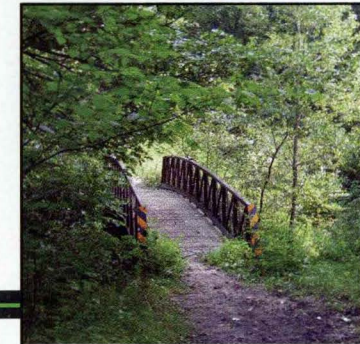
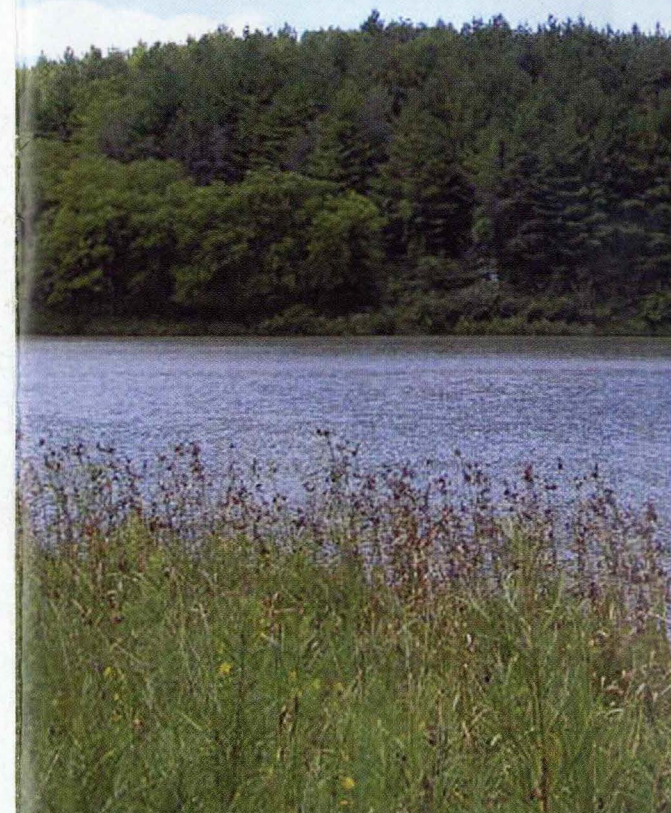


Designed by nita upchurch studio / www.nitaupchurchstudio.com

May 2008
www.iowadnr.com

Stephens

STATE FOREST



FOR INFORMATION CONTACT THE STATE FOREST.

1111 N. 8th Street, Chariton, Iowa 50049

EMAIL: Stephens_Forest@dnr.iowa.gov

PHONE: 641-774-4559

STEPHENS

Stephens State Forest is named for the late DR. T.C. Stephens, a prominent educator and native of Sioux City, Iowa. The forest, located in south central Iowa, is over 14,000 acres in size and is divided into seven separate management units.

| | |
|--------------------|-------------|
| Lucas Unit | 1,279 acres |
| Whitebreast Unit | 3,447 acres |
| Woodburn Unit | 2,091 acres |
| Cedar Creek Unit | 1,888 acres |
| Chariton Unit | 1,513 acres |
| Thousand Acre Unit | 2,300 acres |
| Unionville Unit | 2,245 acres |

MANAGEMENT OF THE STATE FOREST

Stephens State Forest is actively managed by the Iowa Department of Natural Resources Forestry Bureau to provide timber resources, wildlife habitat and recreational opportunities. The primary mission of Iowa's state forests is to demonstrate sound forest management under the principles of multiple use and sustainability.

The forest is intensively managed through thinning overcrowded trees, harvesting mature, diseased or damaged trees, and planting trees in open areas to create new forests. Regeneration of the native oak-hickory forest is a major management emphasis.

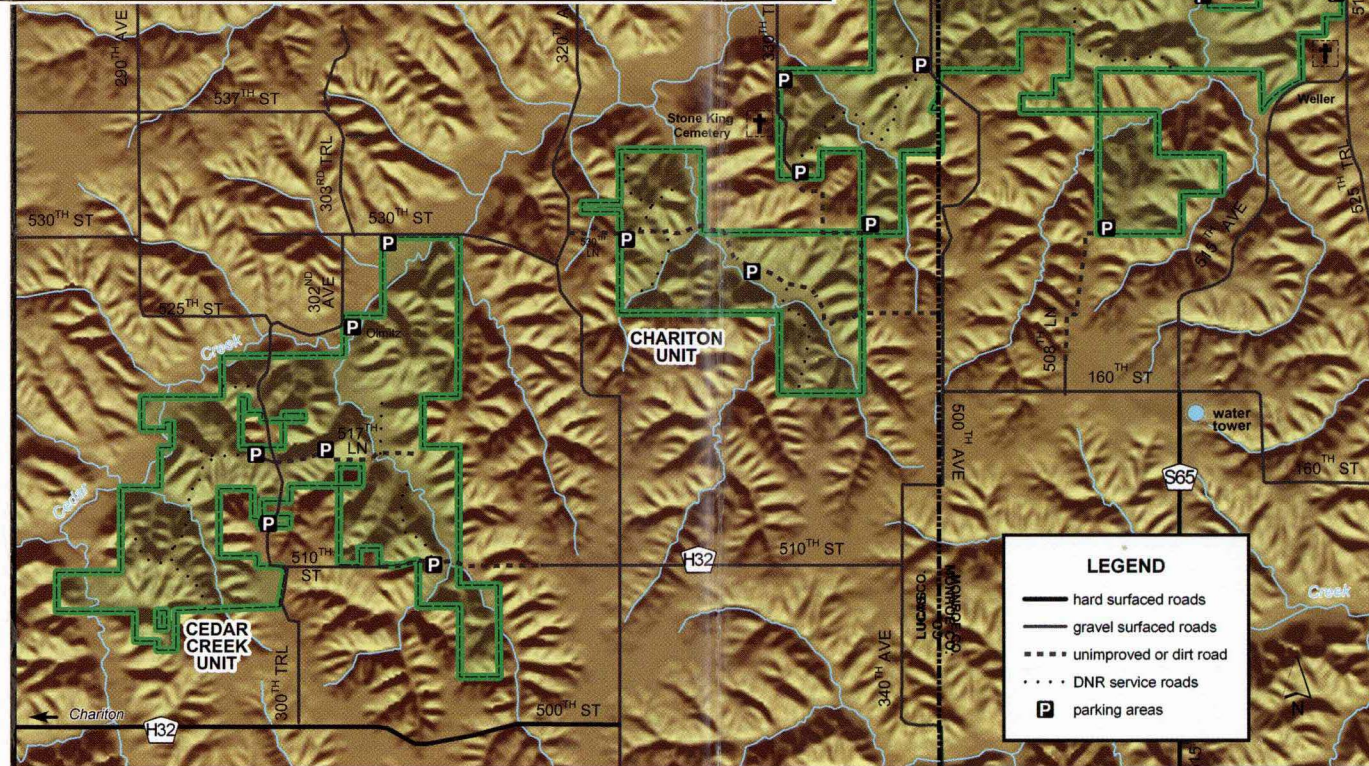
Numerous grasslands and native prairie remnants on the forest are managed through periodic prescribed burning. About 1,000 acres are managed as agricultural land including food plots for wildlife.

The forest is home to numerous wildlife species including deer, turkey, bobcat, quail, pheasant, squirrel, rabbit, and many songbird species. Diverse management insures habitat for all native species.



Unionville Map

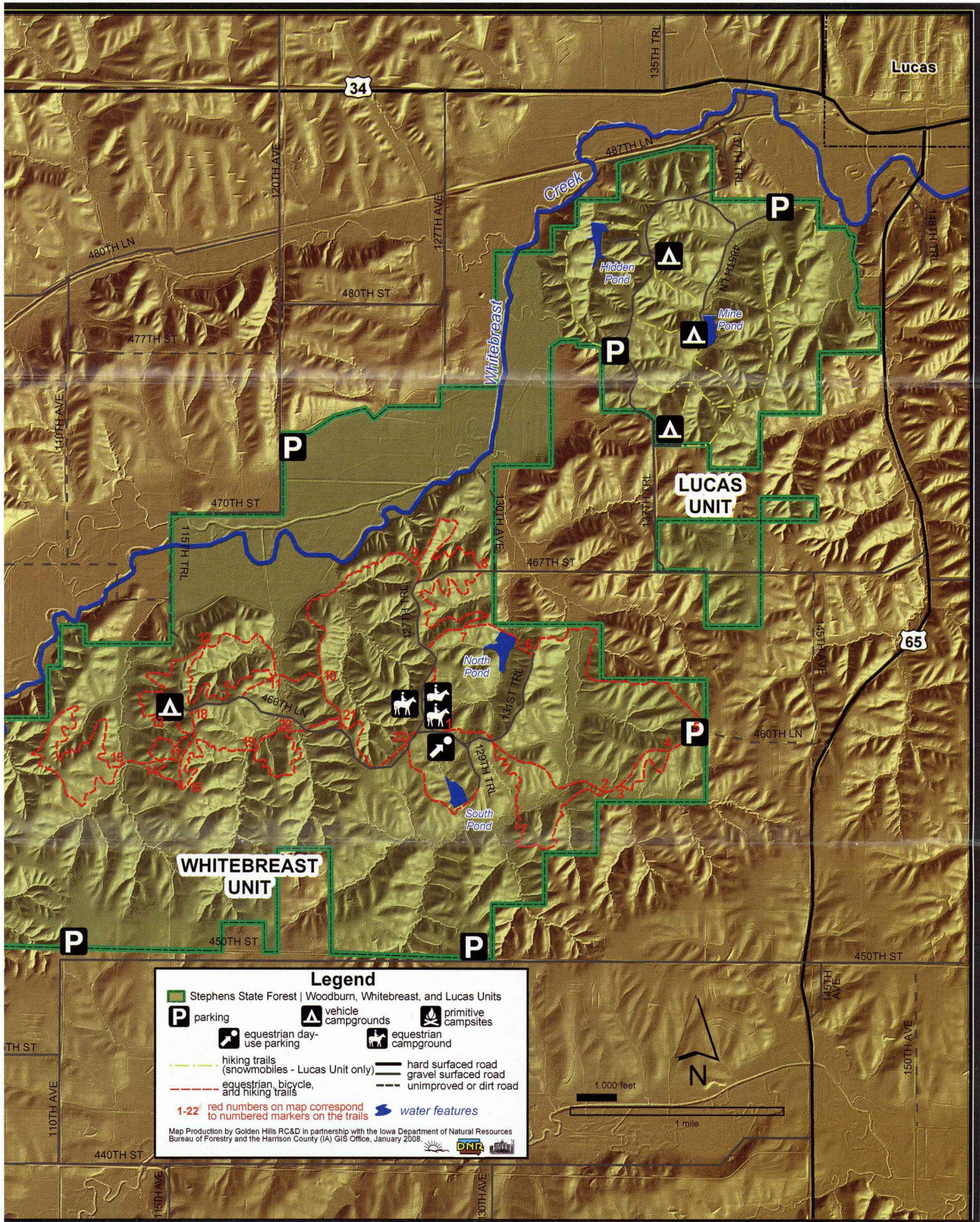
Cedar Creek, Chariton, Thousand Acres Map



Woodburn, Whitebreast, Lucas Map

DNR IOWA DEPARTMENT OF NATURAL RESOURCES





Legend

| | | |
|--|---|--|
| Stephens State Forest Woodburn, Whitebreast, and Lucas Units | | |
| P parking | A vehicle campgrounds | primitive campsites |
| equestrian day-use parking | equestrian campground | |
| hiking trails (snowmobiles - Lucas Unit only) | hard surfaced road | gravel surfaced road |
| equestrian, bicycle, and hiking trails | unimproved or dirt road | |
| 1-22 red numbers on map correspond to numbered markers on the trails | | |
| water features | | |

Map Production by Golden Hills RC&D in partnership with the Iowa Department of Natural Resources Bureau of Forestry and the Harrison County (IA) GIS Office, January 2008.

1,000 feet

1 mile