

WARREN COUNTY

Indianola Vicinity

SCOTCH RIDGE UNITED PRESBYTERIAN CHURCH. Between Des Moines and Indianola, on Highway G16 and 65-69 junction. 4, 17.

WASHINGTON COUNTY

City of Washington

BLAIR HOUSE (City Hall). NRHP 4, 16, 20.

CONGER HOUSE. 903 East Washington Street. NRHP 4, 8, 20.

YOUNG-ALEXANDER CABIN. West Madison Street. NRHP 2, 3, 4, 20.

WAYNE COUNTY

City of Corydon

WAYNE COUNTY HISTORICAL MUSEUM. On Highway 2. 8.

Lineville Vicinity

LITTLE RED SCHOOLHOUSE. Three miles north of Lineville. 8.

WEBSTER COUNTY

City of Fort Dodge

CORPUS CHRISTI CHURCH. 416 North Eighth Street. 4, 17.

VINCENT HOUSE. 824 Third Avenue South. NRHP 4, 10.

WINNESHIEK COUNTY

City of Burr Oak

MASTERS HOTEL. 13.

City of Decorah

PAINTER-BERNATZ MILL. 200 North Mill Street. NRHP 4, 10.

WOODBURY COUNTY

City of Sioux City

SIOUX CITY CENTRAL HIGH SCHOOL. 1212 Nebraska Street. NRHP 4, 8.

WOODBURY COUNTY COURTHOUSE. Seventh and Douglas. NRHP 4, 16, 19.

Sioux City Vicinity

SERGEANT FLOYD MONUMENT. South of Sioux City. NHL 14, 24 (Exploration).

Compiled and Edited
by
Wayne A. Haddy

STATE LIBRARY OF IOWA



3 1723 02122 0819

Historic Places in Iowa

Sidewalk in Missouri Valley, Iowa
Harrison County

This brochure has been funded with the assistance of a matching grant-in-aid from the Department of the Interior, National Park Service, under provisions of the National Historic Preservation Act of 1966.

PUBLISHED BY
THE STATE HISTORICAL
DEPARTMENT OF IOWA
DIVISION OF HISTORIC PRESERVATION

Adrian D. Anderson, Director
State Historic Preservation Officer

B-13 MacLean Hall
Iowa City, Iowa 52242
Telephone (319) 353-3380

Secrest-Ryan Octagon Barn
Scott Township Johnson County



INTRODUCTION

A rich diversity of structures, buildings and special places has been created by Iowans in the course of our occupation and settlement of the land. Homes modest and imposing, places of work and worship, of study and entertainment were built, used, abandoned, re-used or replaced.

As we look at these structures we can see the tangible evidence of the way we have come. To those who become familiar with the history of their community or the history of the state, these places become significant reminders of the people whose achievements shaped the Iowa we know today. They are illustrative of social status, of attitudes and aspirations, once common though perhaps now changed, but all a part of our history.

The purpose of this pamphlet is to acquaint the reader with some of the historic places which have been identified and to explain how the State's Historic Preservation Program works to preserve such historic resources.

FEDERAL LEGISLATION FOR HISTORIC PRESERVATION

The effective legal basis for the present efforts to preserve historic resources was initiated by the passage of the Antiquities Act of 1906, wherein the Federal government recognized its responsibility to preserve and protect "... any historic or prehistoric ruin or monument, or any object of antiquity, situated on lands owned or controlled by the Government of the United States." This was followed by the Historic Sites Act of 1935 which set forth as national policy the development of an inventory of those "... historic sites, buildings, and objects of national significance ..." and the need to preserve them. Finally we have the National Historic Preservation Act of 1966, which is the basis for the national historic preservation program today. This Act provides for comprehensive statewide surveys to locate and inventory historic places, for the acquisition and development of historic properties including districts, sites, buildings, structures and objects significant to our heritage, and for an enlarged National Register of Historic Places.

Three other significant provisions are included in the Act:

The National Register is to include properties of local and state as well as national importance.

Each state is to conduct its own inventory of its historical resources and establish the procedures for nominating them to the National Register.

Federal matching grants-in-aid were authorized to assist states in their preservation projects.

In each state the Governor designates an official responsible for implementing the National Historic Preservation Act at the State level, and approves a review body of historical, archaeological and architectural experts.

IOWA'S HISTORIC PRESERVATION PROGRAM

The Division of Historic Preservation in the State Historical Department is responsible for the development of Iowa's historic preservation activities. The Division Director is the State Historic Preservation Officer.

In Iowa the public nominates properties to the National Register. The Historic Preservation Officer receives the nomination forms and submits them to members of the Nomination Review Committee. When a nomination is approved by a majority of the Review Committee members the nomination form is certified by the State Historic Preservation Officer and sent to the Keeper of the National Register for certification at the Federal level. When certified, the property is then entered in the National Register of Historic Places.

CRITERIA FOR EVALUATION

The following criteria are designed to guide the

States and the Secretary of the Interior in evaluating potential entries (other than areas of the National Park System and National Historic Landmark) to the National Register:

The quality of significance in American history, architecture, archaeology and culture is present in districts, sites, buildings, structures and objects that possess integrity of location, design, setting, materials, workmanship, feeling and association, and:

- (a) that are associated with events that have made a significant contribution to the broad patterns of our history; or
- (b) that are associated with the lives of persons significant in our past; or
- (c) that embody the distinctive characteristics of a type, period, or method of construction, or that represents the work of a master, or that possess high artistic values, or that represent a significant and distinguishable entity whose components may lack individual distinction; or
- (d) that have yielded, or may be likely to yield, information important in prehistory or history.

Ordinarily cemeteries, birthplaces or graves of historical figures, properties owned by religious institutions or used for religious purposes, structures that have been moved from their original locations, reconstructed historic buildings, properties primarily commemorative in nature, and properties that have achieved significance within the past fifty years shall not be considered eligible for the National Register. However, such properties will qualify if they are integral parts of districts that do meet the criteria or if they fall within the following categories:

- (a) a religious property deriving primary significance from architectural or artistic distinction or historical importance; or
- (b) a building or structure removed from its original location but which is significant primarily for architectural value, or which is the surviving structure most importantly associated with a historic person or event; or
- (c) a birthplace or grave of a historical figure of outstanding importance if there is no appropriate site or building directly associated with his productive life; or
- (d) a cemetery which derives its primary significance from graves of persons of transcendent importance, from age, from distinctive design features, or from association with historic events; or
- (e) a reconstructed building when accurately executed in a suitable environment and presented in a dignified manner as part of a restoration master plan, and when no other building or structure with the same association has survived; or
- (f) a property primarily commemorative in intent if design, age, tradition, or symbolic value has invested it with its own historical significance; or

- (g) a property achieving significance within the past fifty years if it is of exceptional importance.

BENEFITS AND PROTECTION

Once a property has been found eligible for the National Register no Federal agency may assist, approve or license a project which would have an effect on that property without taking steps to determine whether a prudent and feasible alternative exists. This is a review process. It does not mean that historic resources will not be destroyed, but they will no longer be indiscriminantly destroyed without their public value being considered.

In order to promote the preservation of historic buildings, each entry in the National Register is eligible for matching grants-in-aid for stabilization and restoration. This grants-in-aid program is administered for the State Historical Department by the Division of Historic Preservation.

THE STATE PLAN

Each state participating in the National Register of Historic Places program has prepared a statewide historic preservation plan. Updated annually, this plan includes a general planning statement, an inventory of sites, and an annual grant request.

In Iowa, the state plan is divided into three sections, each of which may be revised in the future. Section 1 contains a history of the State of Iowa, including prehistory and architectural history as well as sections on the history, philosophy and problems of preservation in the state. Section two consists of geographical and thematic inventories of archaeological, historical and architectural sites in the state. These sites are either already on the National Register or are considered potential sites for the register. Section three describes the annual preservation program in Iowa and is the basis for the amount of Federal assistance which becomes available to the state.

HISTORIC SITES IN IOWA

The following sites, listed alphabetically by both county and city are on the National Register of Historic Places, or are under consideration at the time of this publication. National Register sites, are denoted by the letters NRHP and those sites which are also National Historic Landmarks, are followed by the letters NHL.

Historic places, either in the Register or under consideration, are classified under themes. The thematic scheme will be identified by number as follows:

- | | |
|---------------------------|-------------------|
| 1. Aboriginal Prehistoric | 5. Commerce |
| 2. Aboriginal Historic | 6. Communications |
| 3. Agriculture | 7. Conservation |
| 4. Architecture | 8. Education |

- | | |
|----------------------------|-------------------------|
| 9. Engineering | 17. Religion/Philosophy |
| 10. Industry | 18. Science |
| 11. Invention | 19. Sculpture |
| 12. Landscape Architecture | 20. Social/Humanitarian |
| 13. Literature | 21. Theater |
| 14. Military | 22. Transportation |
| 15. Music | 23. Urban Planning |
| 16. Political | 24. Other |

ADAIR COUNTY

Greenfield Vicinity

CATALPA, (Birthplace of Henry Wallace). South of Greenfield of Highway 25. NRHP 3, 16.

ALLAMAKEE COUNTY

City of Lansing

LANSING STONE SCHOOL. Center and Fifth. NRHP 4, 8.

City of McGregor

EFFIGY MOUNDS. NHL 1.

City of Waukon

WAUKON OPERA HOUSE. Allamakee Street. 4.

APPANOOSE COUNTY

City of Centerville

STRATTON HOUSE. 303 East Washington. 4, 24 (Settlement).

BENTON COUNTY

City of Garrison

OLD CREAMERY THEATRE. 10, 21.

City of Vinton

BENTON COUNTY COURTHOUSE. East Fourth Street. 4, 16, 23.

BENTON COUNTY HISTORICAL SOCIETY MUSEUM. 612 First Avenue. 4, 8.

BLACK HAWK COUNTY

Washington Township

JAMES NEWELL BARN. Turkey Foot Forks. 4, 24 (Settlement).

City of Waterloo

RENSSELAER RUSSELL HOUSE. 520 West Third. NRHP 4, 20.

BOONE COUNTY

City of Boone

KATE SHELLY HOME SITE. Two miles southwest of Boone. 20, 22.

Worth Township

ARCHAEOLOGICAL SITES. Blanket Area-Ledges State Park. 1.

BUCHANAN COUNTY

City of Independence

GATEWAY TO THE PAST. County Fairgrounds. 8. MUNSON PUBLIC LIBRARY. 210 Second Street Northeast. 4, 8, 20.

WAPSIPINICON MILL. 4, 10.

BUENA VISTA COUNTY

Brookes Township

CHAN-YA-TA SITE. 1.

CEDAR COUNTY

City of West Branch

HERBERT HOOVER BIRTHPLACE. NHL 16, 20.

CERRO GORDO COUNTY

City of Mason City

HUB CLOTHING STORE. 4 South Federal Avenue. NRHP 4.

PARK INN HOTEL. 15 West State Street. NRHP 4.

CHEROKEE COUNTY

Cherokee Vicinity

CHEROKEE SEWER SITE. Township 91N. NRHP 1.

PHIPPS SITE. North of Cherokee. NHL 1.

CLAYTON COUNTY

City of Clayton

CLAYTON SCHOOL. First Street. NRHP 4, 8.

City of Elkader

BANDOW APARTMENTS. 101 Oak Northwest. 4. CLAYTON COUNTY COURTHOUSE. 111 High Street Northeast. 4, 16.

ELKADER KEYSTONE BRIDGE. Bridge Street and Highway 13. 9.

ELKADER OPERA HOUSE. 207 North Main. 21.

MCTAGGART HOUSE. 206 Cedar Street Northwest. 4.

RAY MARMANN HOUSE. 113 Oak Northwest. 4.

REIMER HOUSE. 101 High Street Southeast. 4.

ST. JOSEPH CHURCH AND HALL. 330 First Southwest. 4, 17.

Clayton Vicinity

MOTOR MILL. South of Elkader. 4, 10.

City of Garnavillo

GARNAVILLO HISTORICAL MUSEUM. On the Square. 8, 17.

Garnavillo Vicinity

PIONEER ROCK CHURCH. 3½ miles southeast of Garnavillo on Highway 52. 4, 17.

CRAWFORD COUNTY

City of Denison

McHENRY HOUSE. 1428 First Avenue North. 4, 16, 20.

City of Dow City

DOW HOUSE. On the edge of Dow City. NRHP 3, 4, 16.

DALLAS COUNTY

City of Adel

DALLAS COUNTY COURTHOUSE. Eighth and Main. NRHP 4, 16.

City of Dexter

DEXTER COMMUNITY BUILDING. 707 Dallas Street. 4.

DAVIS COUNTY

City of Bloomfield

BLOOMFIELD SQUARE. The Main Square. 23.
DAVIS COUNTY COURTHOUSE. On the Main Square. NRHP 4, 16.

I.O.O.F. HALL. 112½ East Jefferson Street. 20.
STRINGTOWN HOUSE. The Jct. of Troy, Pulaski, and Bloomfield Roads. NRHP 4, 22.

WEAVER HOUSE. Weaver Park Road. 4, 14, 16.

Salt Creek Township

BLACK HAWK GRAVE SITE. Des Moines River Indian-Pioneer Site. 2.

DELAWARE COUNTY

City of Coffin Grove

COFFIN GROVE'S STAGECOACH HOUSE. Near the edge of town. 4, 22.

Delhi Vicinity

BAY SETTLEMENT. North of Delhi. 14, 17.

City of Hopkinton

OLD LENOX COLLEGE. College Street. NRHP 4, 8, 14.

Manchester Vicinity

SPRING BRANCH BUTTER FACTORY. Southwest of Manchester. NRHP 10.

DES MOINES COUNTY

City of Burlington

BURLINGTON PUBLIC LIBRARY. 501 North Fourth Street. 4, 8.

SNAKE ALLEY. North Sixth Street. NRHP 4, 12, 23.

DICKINSON COUNTY

City of Arnolds Park

GARDNER LOG CABIN. West of Estherville on Highway 71. NRHP 2, 13.

DUBUQUE COUNTY

City of Dubuque

CARNEGIE LIBRARY. 11th and Bluff Streets. 4, 8.
DUBUQUE CITY HALL. 50 West 13th Street.

NRHP 4, 5, 16.

DUBUQUE COUNTY COURTHOUSE. 720 Central Avenue. NRHP 4, 16.

LANGWORTHY HOUSE. 1095 West Third Street. 4.

ORPHEUM THEATRE. 405 Main Street. NRHP 4, 21.

City of Dyersville

ALLEN HOUSE. 4, 5.

Farley Vicinity

McGEE BOYHOOD SCHOOL. Northeast of Farley. 8, 18, 20.

Dubuque Vicinity

JOHNSON HOUSE. Table Mound Township. NRHP 4, 8, 17.

JULIEN DUBUQUE'S GRAVE. Mosalem Township. 24 (Settlement).

FAYETTE COUNTY

City of Clermont

UNION SUNDAY SCHOOL. McGregor and Larra-
bee Streets. NRHP 4, 17.

Clermont Vicinity

MONTAUK. One mile northeast of Clermont on U.S.
Highway 18. NRHP 4, 8, 16.

Fayette Vicinity

FAYETTE DEPOT. Westfield Township. 4, 22.

FREMONT COUNTY

City of Tabor

TODD HOUSE. Park Street. 14, 16, 17, 20.

GUTHRIE COUNTY

City of Panora

PANORA-LINDEN HIGH SCHOOL. Main Street.
NRHP 4, 8.

HARDIN COUNTY

City of Iowa Falls

MET THEATER. 515 Washington Street. 4, 21.

HARRISON COUNTY

Missouri Valley Vicinity

BERTRAND ARCHAEOLOGICAL SITES. Seven
miles west of Missouri Valley. 5, 14, 22.

HENRY COUNTY

City of Mount Pleasant

COLFAX SCHOOL. Steam Town, McMillan Park. 8.
HARLAN-LINCOLN HOUSE. 101 West Broad
NRHP 16, 20.

MIDWEST OLD SETTLERS AND THRESHERS
REUNION. McMillan Park. 3, 8, 21.

OAKLAND MILLS SCHOOL. Rural Route 4, 8.

OLD MAIN. Iowa Wesleyan Campus. NRHP 4, 8.

PRAIRIE GEM METHODIST CHAPEL. Steam
Town, McMillan Park. 8, 17.

IDA COUNTY

City of Holstein

TURNER HALL. Keil and Second Streets. 4, 8, 15,
16, 20, 21.

City of Ida Grove

IDA COUNTY COURTHOUSE. 401 Moorehead
Street. NRHP 4, 16.

MOOREHEAD STAGECOACH INN. Rural Route 1.
NRHP 4, 5, 6, 8, 16, 17, 22.

IOWA COUNTY

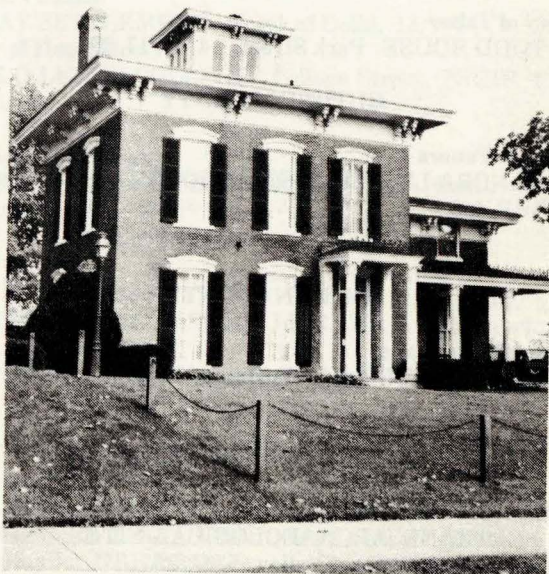
Iowa County Vicinity

AMANA VILLAGES. NHL 4, 17, 23, 24.
(Settlement).

City of Marengo

LOG HOUSE and LOG CABIN. 1200 Marengo
Avenue. 8, 24. (Settlement).

Rensselaer Russel House Waterloo, Iowa



JACKSON COUNTY

Baldwin Vicinity

LUBBEN FARM. One mile north of Baldwin. 3, 4.

Bellevue Vicinity

PARADISE FARM. Three miles west of Bellevue. 4,
8.

City of Hurstville

HURSTVILLE LIME KILNS. North Main Street.
10.

Maquoketa Vicinity

WILSON FARM. 2½ miles southwest of Maquoketa.
24 (Settlement)

JOHNSON COUNTY

City of Coralville

CORALVILLE CITY HALL. 1512 Seventh Street. 4,
16.

CORALVILLE PUBLIC SCHOOL. 402-404 Fifth
Street. NRHP 4, 8.

City of Iowa City

COLLEGE BLOCK BUILDING. 125 East College
Street. NRHP 4.

CONGREGATIONAL CHURCH. 30 North Clinton
Street. NRHP 4, 17.

FIRST PRESBYTERIAN CHURCH. 26 East Market
Street. NRHP 4, 17.

GRANT WOOD HOUSE. 1142 East Court Street. 4,
24. (Art).

CLOSE HOUSE. 938 South Gilbert Street. NRHP 4,
20.

JOHNSON COUNTY COURTHOUSE. South Clinton
Street. 4, 16.

KIRKWOOD HOUSE. 1101 Kirkwood Avenue.
NRHP 4, 16.

NICKING HOUSE. 410 East Market Street. 4.

OLD CAPITOL. On the Pentacrest, University of
Iowa campus. NRHP 4, 8, 16.

PLUM GROVE. 1030 Carroll Avenue. NRHP 4, 8,
12, 16.

SOUTH SUMMIT STREET DISTRICT. 301-818
South Summit Street. NRHP 4, 14.

TRINITY EPISCOPAL CHURCH. 320 East College
Street. NRHP 4, 17.

WENTZ HOUSE. 219 North Gilbert Street. NRHP
4.

Iowa City Vicinity

INDIAN LOOKOUT. West Lucas Township. 1.

Solon Vicinity

OLD STONE ACADEMY. North of Solon. 4, 8.

Downey Vicinity

SECRET-RYAN OCTAGON BARN. Scott Town-
ship. NRHP 3, 4.

KEOKUK COUNTY

City of What Cheer

WHAT CHEER OPERA HOUSE. 201 Barnes Street.
NRHP 15, 21.

Delta Vicinity

DELTA COVERED BRIDGE. South of Delta.
NRHP 9.

LEE COUNTY

City of Fort Madison

OLD FORT MADISON. 315-335 Avenue H. NRHP
1, 2.

City of Keokuk

BELKNAP HOUSE. 511 North Third Street. 4, 14,
16.

MILLER HOUSE. 318 North Fifth Street. NRHP
16.

LINN COUNTY

City of Cedar Rapids

CEDAR RAPIDS WATER PURIFICATION
PLANT. 761 J Avenue Northeast. 4.

PEOPLES CHURCH. 600 Third Avenue Southeast.
4, 17.

City of Marion

MARION HISTORICAL MUSEUM. 970 Tenth
Street. 4, 8.

LOUISA COUNTY

City of Columbus Junction

COMMUNITY BUILDING. 122 East Maple. NRHP
4, 8.

Elrick Vicinity

COUNCIL ON THE IOWA. Northwest of Elrick. 2,
14, 16.

Wapello Vicinity

TOOLESBORO MOUND GROUP. Eight miles
southeast of Wapello. NHL 1.

LYON COUNTY

City of Rock Rapids

MELAN BRIDGE. Sater Park, Highway 9 East.
NHRP 9.

Larchwood Vicinity

KLONDIKE MILL. Southwest of Larchwood. 10.

Sioux Township Vicinity

BLOOD RUN SITE. Jct. of the Big Sioux River and
The Blood Run River. NHL 2.

MAHASKA COUNTY

Oskaloosa Vicinity

NELSON HOUSE AND BARN. Rural Route 1.
NRHP 3, 4, 8.

MARSHALL COUNTY

City of Marshalltown

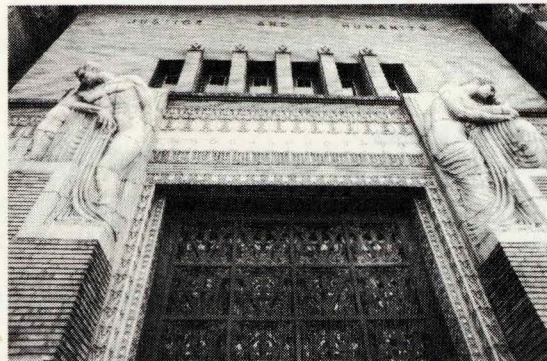
MARSHALL COUNTY COURTHOUSE. One square
block, bordered by Center, Main, Church and First
Streets. NRHP 4, 16.

MILLS COUNTY

Glenwood Vicinity

PONY CREEK PARK. Northeast of Glenwood on
Pony Creek. NRHP 1.

Woodbury County Courthouse Sioux City, Iowa



MITCHELL COUNTY

St. Ansgar Vicinity

ST. ANSGAR MILL. Southwest of St. Ansgar. 10.

MONTGOMERY COUNTY

City of Red Oak

RED OAK CHAUTAUQUA PAVILION. Oak
Street. NRHP 8.

MUSCATINE COUNTY

City of Muscatine

BOWMAN LIVERY STABLE. Walnut Street.
NRHP 4, 5.

McKIBBEN HOUSE. Walnut Street. NRHP 4, 5, 20.
COUNTY JAIL. 411 East Fourth Street. NRHP 4,
17.

TRINITY EPISCOPAL CHURCH. 411 East Second

Muscatine Vicinity

OCTAGON HOUSE. Rural Route 2. NRHP 4.

O'BRIEN COUNTY

Sutherland Vicinity

INDIAN VILLAGE SITE. Wittrock, near Suther-
land. NHL 1.

PAGE COUNTY

City of Clarinda

COLONEL HEPBURN HOUSE. 321 West Lincoln.
NRHP 4, 8, 15, 21.

GOLDENROD SCHOOLHOUSE. Block 48, Frazer
Addition. 3, 8.

PALO ALTO COUNTY

City of Emmetsburg

KELLY HOUSE. 2403 Seventh Street. 4.

City of West Bend

MASONIC HALL. 4, 17.

POCAHONTAS COUNTY

City of Laurens

LAURENS PUBLIC LIBRARY. 263 North Third.
NRHP 4, 8.

POLK COUNTY

City of Des Moines

FLYNN FARM, MANSION and BARN. 2600-111th
Street. NRHP 3, 4.

FORT DES MOINES PROVISIONAL ARMY OFFI-
CER TRAINING SCHOOL. NHL 14, 16, 24
(Afro-American History).

NAYLOR HOUSE. 944 West Ninth Street. NRHP
4.

OLD TROUGH. Southeast 11th and Scott. 10, 20.

SALISBURY HOUSE. 4025 Tonawanda. 4, 8.

STATE CAPITOL. 4, 16.

TERRACE HILL. 2300 Grand Avenue. NRHP 4, 5,
22.

U.S. POST OFFICE. Second and Walnut Street.
NRHP 4, 6.

City of West Des Moines

JORDAN HOUSE. 2251 Fuller Road. NRHP 8, 16,
17, 20, 22.

Saylorville Vicinity

SAYLORVILLE FIVE SITE. Northwest of Saylor-
ville on Highway 401. 1.

POTTAWATTAMIE COUNTY

City of Council Bluffs

DODGE HOUSE. 605 South Third Street. NHL 4,
16, 22.

POTTAWATTAMIE COUNTY JAIL. 226 Pearl
Street. NRHP 4, 20.

POWESHIEK COUNTY

Montezuma Vicinity

FOREST HOUSE. Seven miles southwest of
Montezuma. 24 (Settlement).

SCOTT COUNTY

City of Davenport

CLIFTON. 1533 Clay Street. 4, 5, 10.

COLLINS HOUSE. 1234 East 29th Street. 4.

BARROWS HOUSE. East Sixth Street and
Pershing. 4, 24. (Settlement).

FRICK'S TAVERN. 1402 West Third Street. NRHP
4, 20.

LECLAIRE HOUSE. 630 East Seventh Street.
NRHP 4, 5, 10, 16, 17, 20, 22.

SCHICK APARTMENTS. 310-314 Gaines Street.
NRHP 4, 17.

TRINITY EPISCOPAL CATHEDRAL. 121 West
12th Street. NRHP 4, 17.

McCausland Vicinity

CODY HOMESTEAD. Vicinity of McCausland.
NRHP 3, 4.

SIOUX COUNTY

City of Orange City

ZWEMER HALL. 101 Seventh Street Southwest. 4,
8.

STORY COUNTY

City of Ames

KNAPP-WILSON HOUSE. On the Iowa State
University campus. NRHP 3, 8.

TAMA COUNTY

City of Traer

BROOKS and MOORE BANK BUILDING. 423
Second Street. NRHP 4, 5.

TRAER WINDING STAIRS. 534 Second Street. 9.

TAYLOR COUNTY

New Market Vicinity

COLLINS BARN. East of New MARKET. 3, 4.

UNION COUNTY

City of Creston

CRESTON RAILROAD DEPOT. 200 West Adams.
NRHP 4, 22.

VAN BUREN COUNTY

City of Keosauqua

HOTEL MANNING. River Street and Van Buren.
NRHP 4, 5.

Keosauqua Vicinity

BENTONSPORT. Rural Route, Washington Town-
ship. NRHP 4, 22.

WAPELLO COUNTY

City of Agency

CHIEF WAPELLO MEMORIAL PARK. Rural
Route 1. 2.

City of Ottumwa

MARS HILL CHURCH. Keokuk Township. NRHP
8, 17.

City of Eldon

AMERICAN GOTHIC HOUSE. Burton and Gothic
Street. NRHP 4, 24 (Art).

WARREN COUNTY

Indianola Vicinity

SCOTCH RIDGE UNITED PRESBYTERIAN CHURCH. Between Des Moines and Indianola, on Highway G16 and 65-69 junction. 4, 17.

WASHINGTON COUNTY

City of Washington

BLAIR HOUSE (City Hall). NRHP 4, 16, 20.

CONGER HOUSE. 903 East Washington Street. NRHP 4, 8, 20.

YOUNG-ALEXANDER CABIN. West Madison Street. NRHP 2, 3, 4, 20.

WAYNE COUNTY

City of Corydon

WAYNE COUNTY HISTORICAL MUSEUM. On Highway 2. 8.

Lineville Vicinity

LITTLE RED SCHOOLHOUSE. Three miles north of Lineville. 8.

WEBSTER COUNTY

City of Fort Dodge

CORPUS CHRISTI CHURCH. 416 North Eighth Street. 4, 17.

VINCENT HOUSE. 824 Third Avenue South. NRHP 4, 10.

WINNESHIEK COUNTY

City of Burr Oak

MASTERS HOTEL. 13.

City of Decorah

PAINTER-BERNATZ MILL. 200 North Mill Street. NRHP 4, 10.

WOODBURY COUNTY

City of Sioux City

SIOUX CITY CENTRAL HIGH SCHOOL. 1212 Nebraska Street. NRHP 4, 8.

WOODBURY COUNTY COURTHOUSE. Seventh and Douglas. NRHP 4, 16, 19.

Sioux City Vicinity

SERGEANT FLOYD MONUMENT. South of Sioux City. NHL 14, 24 (Exploration).

Compiled and Edited
by

Wayne A. Haddy

STATE LIBRARY OF IOWA



3 1723 02122 0819

Historic Places in Iowa

Sidewalk in Missouri Valley, Iowa
Harrison County