

Lake Macbride, covering 812 acres, is Iowa's largest state-owned man-made area. Located in Johnson County, four miles west of Solon, the park may be reached by Iowa Highway 382 leading northwest from Solon; from U.S. Highway 30 on a blacktop county road W6E through Ely south to Iowa 382; or from the North Liberty exit off of I-380 or U.S. 218 by traveling east on County Road F-28. Excellent roads lead to the park's picnic areas, campgrounds and overlooks—all with adequate parking space.

The park consists of two units because of its unique shape. The north unit lies at the end of Iowa highway 382. A winding road branches south and west to a campground and east to boat ramps, the supervised beach and bathhouse.

From the southwest edge of Solon, County Road F-28 is used to reach the inside of the lake between its two "arms". This road heads straight west from Solon and curves south toward the lower arm of the lake. A left turn north of the causeway follows the lakeshore east to a campground, picnic area, and boat ramp. A right turn north of the causeway leads to the central shop and the new 4-lane boat ramp.

At the south end of the causeway is the visitor-administrative center for Lake Macbride State Park. Picnic areas, fishing access and foot trails can be reached by going either direction at the south end of the causeway.

Multi-use trails, hiking and snowmobile trails wind for miles around the lake. All trails in the park are filled with the sights and sounds of Iowa at its best and some that are seldom seen elsewhere in the state. For instance, long-eared and rare saw-whet owls can sometimes be observed in the stands of evergreens during fall and winter months.

Good catches of walleye, channel catfish, crappie, and bluegill await the fisherman in this 812 acre lake. Cool water temperatures in spring and fall stir walleyes and crappies into a feeding spree, while warm summer days provide some of the best catfishing in the state. Walleye and channel catfish are stocked annually to maintain good fishing populations. Good lake access is available for boat and shore fishing. Macbride may be the only lake in Iowa in which the prized Kentucky-spotted bass can be caught. A six horsepower outboard motor limit is enforced. For detailed fishing information, contact: Fisheries Biologist, Macbride Fisheries Station, Box 236, Solon, Iowa 52333. (319)644-3615.

Bird watchers thrill to the sight of every song bird native to the region. Many species of shore birds inhabit the area, and waterfowl are common in the spring and fall. During the winter months, the park offers ice skating, ice fishing and designated snowmobile trails. Mushroom hunting is allowed in the park.

Camping Information

Lake Macbride State Park will accommodate 160 camping units. There are electrical hook-ups available for those who prefer the modern touch. Lake Macbride camp sites are classified as modern or nonmodern. The modern sites have flush toilets and shower facilities available. All camping permits are issued by the park ranger. The Commission has fixed fees for tent and trailer camping as follows: (see enclosed insert).

A basic camping unit is the portable shelter used by one to six persons. Only one vehicle may be used for transportation in the camp area. All other motor vehicles will be parked in the visitor parking area and so marked. Any persons over the basic unit of six will be charged 25 cents per person.

In The Neighborhood

Lake Macbride golf course is two miles west of Solon on Iowa Highway 382.

Solon, four miles from the park offers tennis.

Iowa City, home of the University of Iowa, is 14 miles south of Macbride on State Highway-1

Cedar Rapids, 16 miles northwest of the park is the second largest city in Iowa.

Coralville Reservoir, the spillway at Macbride flows into this reservoir. It extends up the Iowa River from 17 to 27 river miles from the dam. It was built by the Corps of Army Engineers and is under their jurisdiction. Recreation includes boating, hunting, fishing, swimming, camping, and picnicking. The dam, just south of Turkey Creek, is a sight well worth seeing.

State park maintenance and operation funds are derived solely from legislative appropriation and receipts from camping and concession revenue, cabin and lodge rental, and boat dock fees.

EQUAL RECREATIONAL OPPORTUNITIES: All persons are entitled to full and equal enjoyment of the recreational opportunities, privileges and advantages available in Iowa's great outdoors.

State park maintenance and operation funds are derived solely from legislative appropriation and receipts from camping and concession revenue, cabin and lodge rental and boat dock fees.

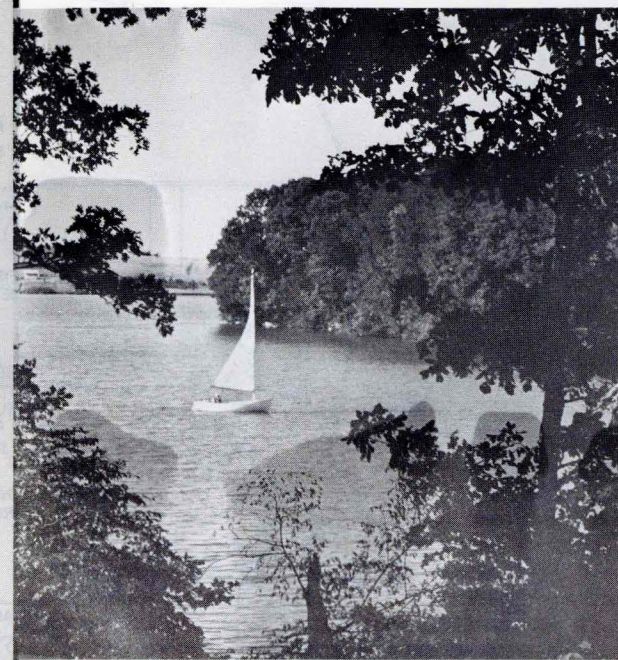
IOWA CONSERVATION COMMISSION
WALLACE STATE OFFICE BUILDING
DES MOINES, IOWA 50319

CPA-4128 5/81

17
C755
7:M119
1981

SEP 1 1982

LAKE MACBRIDE State Park



PARK RANGER ADDRESS
Lake Macbride State Park Office
Solon, Iowa 52333
Telephone (319) 644-2200



STATE LIBRARY OF IOWA
Historical Building
DES MOINES, IOWA 50319



**CONSERVATION
COMMISSION**

LAKE MACBRIDE State Park

