

Brushy Creek Recreation Area offers 4200 acres for the enjoyment of the outdoor enthusiast. The site, located four miles east of Lehigh in Webster County, offers year round outdoor recreation opportunities.

Brushy's mix of fields, timberland, and stream valley provide excellent opportunities for the nature enthusiast and trail user. The area features 35 miles of equestrian and 16 miles of snowmobile trails. Cross-country skiers also find plenty of opportunity to enjoy the beauty of the area in the winter.

Although no developed facilities are present, Brushy Creek offers plenty of primitive picnicking and camping opportunities. Camping at the area is popular, although no shower facilities or electricity are available. In addition, camping facilities are available for horseback riders.

Brushy Creek, a tributary of the Des Moines River, offers good fishing opportunities, as well as a chance for informal wading and swimming during summer months. The entire area except the campgrounds is open to public hunting. Favorite game species include pheasant, squirrel, rabbit, deer, gray partridge and quail. Ample "off the road" designated parking areas are provided for access to most areas of this naturalists paradise.



Camping Information

Brushy Creek State Recreation Area will accommodate 175 camping units. Brushy Creek camp sites are classified as non-modern as there are no flush toilets and shower facilities available. A master plan is being developed for the Brushy Creek area. Upon completion of this plan facility development will proceed as funds become available. All camping permits are issued by the park ranger. For camping rates, see the enclosed insert.

A basic camping unit is the portable shelter used by one to six persons. Only one vehicle may be used for transportation in the camp area. All other motor vehicles will be parked in the visitor parking area and so marked. Any persons over the basic unit of six will be charged 25 cents per person.

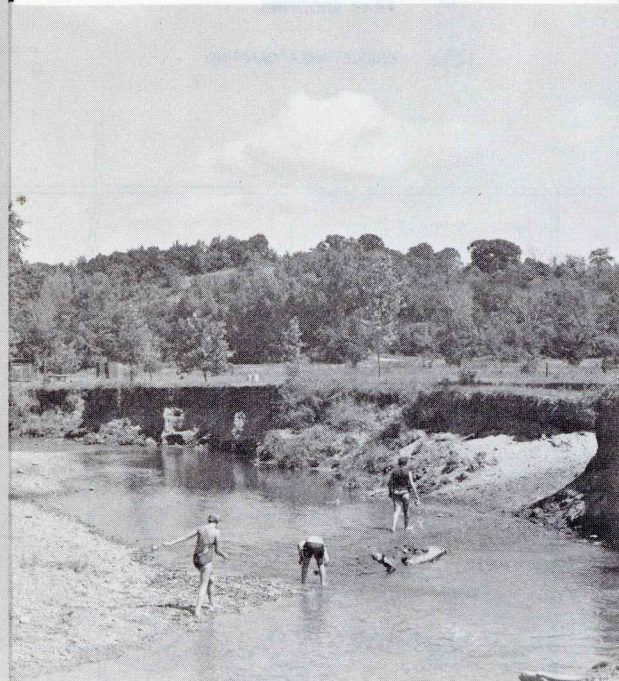


EQUAL RECREATIONAL OPPORTUNITIES: All persons are entitled to full and equal enjoyment of the recreational opportunities, privileges and advantages available in Iowa's great outdoors.

State park maintenance and operation funds are derived solely from legislative appropriation and receipts from camping and concession revenue, cabin and lodge rental and boat dock fees.

IOWA CONSERVATION COMMISSION
WALLACE STATE OFFICE BLDG.
DES MOINES, IOWA 50319

BRUSHY CREEK recreation area



Recreation Area Manager Address:
Brushy Creek Recreation Area
RR #1, Box 150
Lehigh, Iowa 50557
Telephone 515/359-2501

17 C755 7:B912
/Brushy Creek Recreation Area
3 1723 00025 4318



**CONSERVATION
COMMISSION**
STATE LIBRARY OF IOWA
Historical Building
DES MOINES, IOWA 50319

-  PARK RANGER
-  DRINKING WATER
-  CAMPING AREA
-  PICNIC AREA
-  INDIAN MOUNDS
-  BRIDLE DAY USE AREA
-  TRAP SHOOTING
-  BRIDLE AREA CAMPING

