

## **Dream Becomes Reality**

In 2001, a US Department of Veterans Affairs (USDVA) study identified Iowa as needing a dedicated, state-owned and operated veterans' cemetery. The study revealed over 280,000 veterans living in Iowa, with about 92,000 living within a 75-mile radius of Des Moines.

The Iowa Department of Veterans Affairs (IDVA) began fundraising for the cemetery on Veterans Day in 2004 with Bronze and Silver Commemorative Iowa Veterans Medals. In 2005, Iowa's legislature gave IDVA the authority to "establish and operate" a state veterans cemetery. Early the following year, two generous donors contributed land parcels totaling 96 acres for that purpose. On this land, the Iowa Veterans Cemetery will be constructed. A groundbreaking ceremony was held on Veterans Day 2006—in only a few years the dream becomes a reality.

### **State Cemetery Grant Program**

USDVA's State Cemetery Grant Program is funding the construction of the cemetery. The cemetery will be managed and operated by state employees, some of which, themselves, are veterans. Cemetery operation will be state funded. Memorials and beautification of the cemetery grounds are provided for by public donation.



## **Friends of the Cemetery**

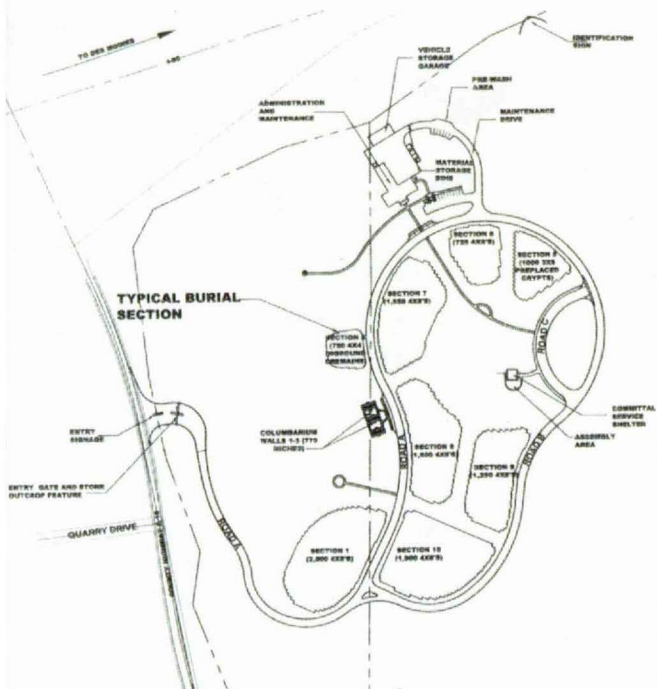
The “Friends of the Cemetery” program is designed to allow families, friends and organizations to memorialize their loved ones through the beautification of the cemetery grounds. Examples of memorials under consideration include an Avenue of Flags, memorial trees, commemorative benches, designated artwork, organizational stones in a Memorial Garden, Donors Wall plaque in the Administration Building, and engraved walkway stones. View future “Friends” campaigns on the cemetery’s webpage at: [www.iowava.org/vetcemetery](http://www.iowava.org/vetcemetery).

### **“Friends” Donation Campaign**

The magnificent wall depicted on the front of this brochure strikingly announces to I-80 travelers heading east or west that at this site Iowans are proudly *honoring those who served*. The wall is 7’ tall and angles east and west approximately 60’ from the end of each wing to the center of the front arch. It is constructed with stone. Black metal lettering boldly announces the cemetery’s presence. It will be illuminated at night.

This project must be funded by donations. IDVA, operating as a state instrumentality, created a dedicated fund for this purpose (Veterans Cemetery Fund), which qualifies each contribution as tax deductible.

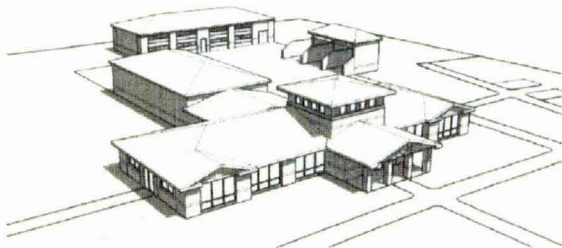
We are asking you to consider donating to this worthy cause, which has to be completed during construction. The campaign to seek donations to build the wall requires \$100,000 to complete the project.



## Project – Phase 1

Phase 1 of the project involves the development of approximately 40 acres, which will include a main entrance feature, 12,110 gravesites, development of an Administration and Maintenance Complex (above), assembly area, Committal Service Shelter (next page), Memorial Walk, and supporting infrastructure. This phase is estimated to meet the needs of eligible veterans and their families for 20 years. Phases 2-4 are available for future expansion.



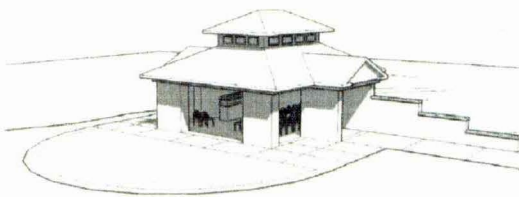


## **ADMINISTRATION / MAINTENANCE**

### **Cemetery Buildings and Grounds**

Construction begins in late July 2007, with an anticipated opening around Memorial Day 2008. The cemetery is located 10-miles west of Des Moines in Dallas County near the Van Meter, Iowa (Exit 113). The property runs along I-80 southeast of the exit.

The cemetery grounds are composed of mostly flat to gently rolling hills with open meadows and a variety of trees, grasses and shrubs. The design of the cemetery remains in keeping with the natural beauty of the surrounding countryside.



## **COMMITTAL SERVICE SHELTER**

### **Honoring Those Who Served**

Graveside services are not provided at state veteran cemeteries. A committal service takes the place of the graveside service. All funeral services are held prior to arrival at the cemetery. Committal services, if elected by the family, are held at the Committal Service Shelter. An Honor Guard Program will be available.

## **What can you do to help?**

Become a member of the "Friends of the Cemetery" program. The I-80 wall project is our first donation campaign. It is time sensitive because construction on the cemetery is scheduled to begin in late July 2007.

Future memorial and beautification programs will be announced on the Iowa Veterans Cemetery homepage found at: [www.iowava.org/vetcemetery](http://www.iowava.org/vetcemetery).

## **Message from the Governor**

Lt. Governor Patty Judge and I have deep respect and admiration for the sacrifices made by our veterans, and the daily challenges encountered by all of our active duty military members and their families. The Iowa Veterans Cemetery is Iowa's public statement of respect—we are proud of you all. We ask that Iowans and corporate partners consider supporting the "Friends of the Cemetery" campaign to build the I-80 wall project with a generous contribution.



Chester J. Culver  
Governor

State Library Of Iowa  
Miller Building  
Des Moines, Iowa