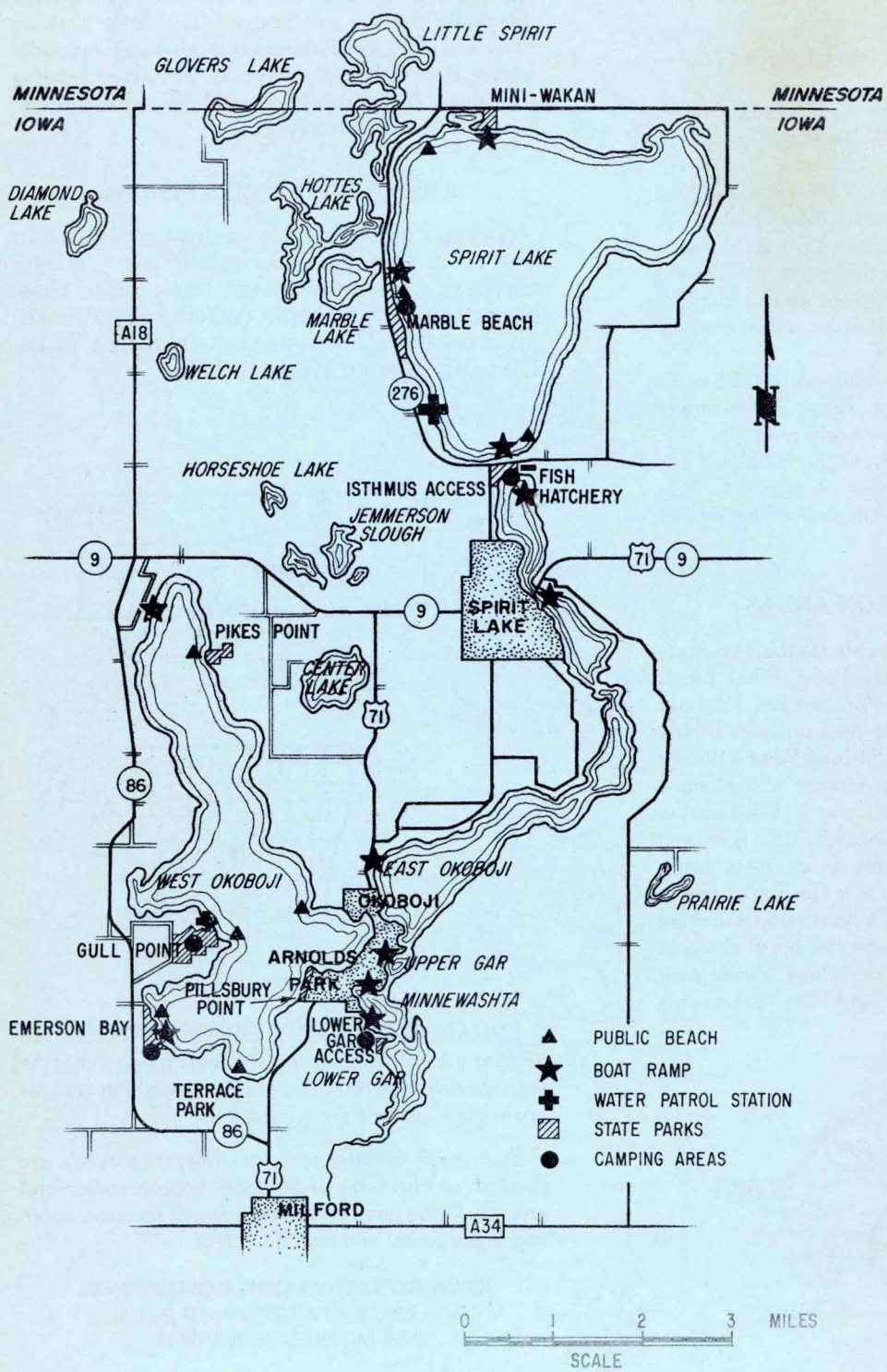
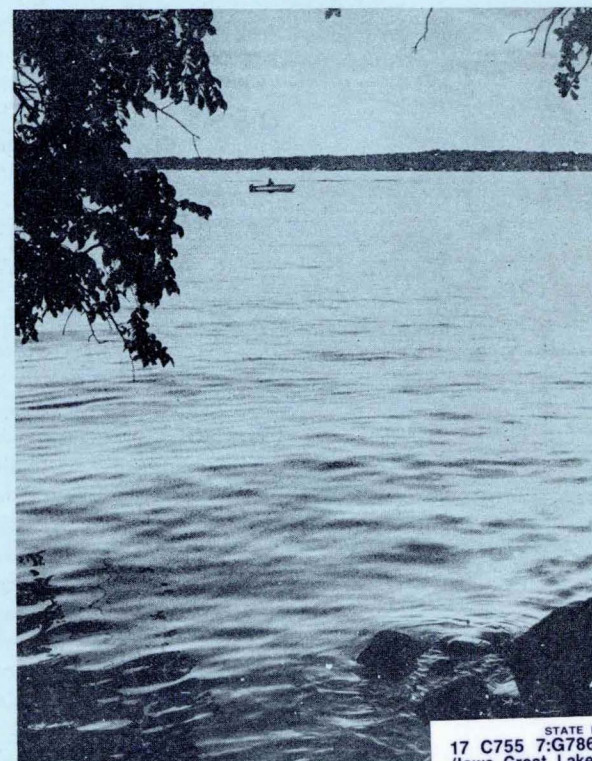


SEP 1 1

17
C755
7:G786
1981



IOWA GREAT LAKES REGION State Recreation Area



STATE LIBRARY OF IOWA
17 C755 7:G786
/Iowa Great Lakes Region State Recreation Area
sdoc
3 1723 00025 4078

PARK RANGERS ADDRESS
Gull Point State Park - RR 2
Milford, Iowa 51351
Telephone 712/337-3211
STATE LIBRARY OF IOWA
Historical Building
DES MOINES, IOWA 50319

CAMPGROUNDS IN THE LAKES REGION

Two state parks offer modern facilities in this region — Gull Point and Marble Beach. Gull Point State Park is located on the west side of West Okoboji Lake. Other facilities at Gull Point include swimming, boating, fishing, picnicking, enclosed shelter rental and electrical hookups.

Marble Beach Park access is located on the west shore of Spirit Lake. Besides offering modern campgrounds, both of these parks offer picnicking, swimming, fishing and boating.

Non-modern camping facilities are available at Emerson Bay located on the southwest shore of West Okoboji and the Isthmus area, located between the lakes of East Okoboji and Spirit Lake. Other activities include picnicking, fishing and boating.



ENCLOSED SHELTER

Gull Point has a fine enclosed shelter (lodge) that may be rented for \$25.00. Rate given is for each 100 people per reservation. No charges are made for electricity or fuel on lodge rentals. The lodge is closed during the winter. Reservations are made through the park ranger.

GULL POINT NATURE TRAIL

The Gull Point Nature Trail is 1.3 miles in length. It is divided into two parts so that those who wish can take a short walk for .3 of a mile and return to the parking area.

The trail is self-guiding and offers a variety of both plant and animal life.

CAMPING RATES AND REGULATIONS

All camping permits are issued by the park ranger. The Commission has fixed the fees for tent and trailer camping as follows:

Non-modern Area . . . 3.50 Per Night Per Basic Unit
Modern Area 4.00 Per Night Per Basic Unit
Modern Area

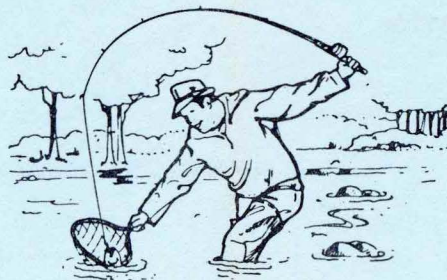
W-Electric 5.50 Per Night Per Basic Unit
A basic camping unit is the portable shelter used by one to six persons. Only one vehicle may be used for transportation in the camp area. All other motor vehicles will be parked in the visitor parking area and so marked. Any persons over the basic unit of six will be charged 25 cents per person.

For chaperoned, organized youth groups, 25 cents per person per night is charged. There is a minimum charge of \$4.00 per night in a modern area.

**Special rates for senior citizens, handicapped and blind (Monday through Thursday — May 14 - September 15, special rates for all days from September 16 - May 13).*

OTHER RECREATION AREAS

Four other recreation areas located in the immediate great lakes region are Pillsbury Point, Pikes Point, Mini-Wakan, and Lower Gar Park access. Pillsbury Point is a nice picnic area and also provides fishing access to West Okoboji Lake. Pillsbury Point is the site of the infamous Spirit Lake massacre and offers a museum telling the story. This site is listed in the National Register. Pikes Point, located on the northeast shore of West Okoboji, provides an excellent swimming beach and picnic area. Lower Gar Park offers a picnic area and fishing access. A boat ramp is located nearby. Mini-Wakan, located on the north shore of Spirit Lake, offers fishing and picnicking. Picnic shelters are available at Pikes Point and Mini-Wakan on a first come, first serve basis.

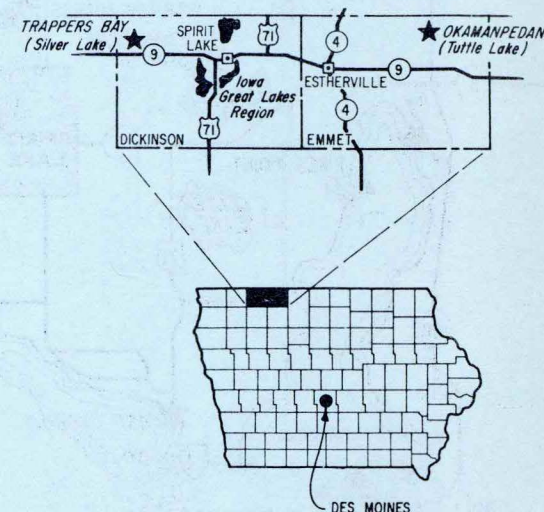


CPE-20590

Okamanpedan State Park located in adjacent Emmet County on the east and Trappers Bay State Park on Silver Lake at Lake Park are two other popular parks nearby. Both of these parks provide picnicking, boating and fishing. A picnic shelter is available on a first come, first serve basis in each park.

IOWA GREAT LAKES FISHING

Anglers can expect a variety of fishing in this area. Common species include walleye, northern pike, smallmouth bass, white bass, perch, bluegills, crappie, catfish and bullhead. Muskies have been stocked in Spirit Lake, East Okoboji and West Okoboji.



EQUAL RECREATION OPPORTUNITIES: All persons are entitled to full and equal enjoyment of the recreational opportunities, privileges and advantages available in Iowa's great outdoors.

State park maintenance and operation funds are derived solely from legislative appropriation and receipts from camping and concession revenue, cabin and lodge rental and boat dock fees.

IOWA CONSERVATION COMMISSION
WALLACE STATE OFFICE BLDG.
DES MOINES, IOWA 50319