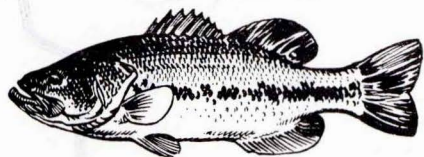


Along the Iowa-Missouri border 5½ miles southeast of Davis City in Decatur County is Nine Eagles State Park. This scenic, 1,100 acre park is one of the most easily accessible parks in the state especially by way of Interstate 35 to U.S. 69 and on to Davis City.

The wooded hills make Nine Eagles one of Iowa's most scenic parks. Most of the park is woodland with many oaks lining the hillsides and lake shore. In the fall, the hills are aglow with shades of brown, gold and red intermingled with greens. These colors against the blue of the sky, reflecting into the sparkling water of the 56 acre lake combine to make Nine Eagles a site well worth driving to see.

Fishing is a popular sport with park visitors. The lake is a natural for bass, channel catfish, bluegills, and crappies.



The watershed is all in timber making the lake one of the clearest artificial lakes in the state.

Because it's an artificial lake under 100 acres, only rowboats and electric trolling motors not exceeding 1½ H.P. are permitted. They may be rented from the concessionaire near the beach on the north shore where bait and tackle are also available.

Near the boat concession is a large sandy beach popular for swimming. Docks and a boat ramp are provided east of the beach for those who own their own boats.

Near the beach is a picnic area where visitors enjoy the shade, adequate parking, tables and fireplaces. Picnic areas are scattered throughout the park. The camping areas are shown on the map.

Flora of every kind native to the area flourishes and provides excellent cover for birds and wildlife. This is a haven for deer and almost every morning or evening they can be seen as they feed and drink near the lake or browse in the woodland. Water birds wading in the lake are common sights to fishermen and picnickers along the lake shore.

The name, "Nine Eagles", originated with the first post office in Decatur County which was first built in the general park area. At the time the post office was built, the townsmen and women were debating about a name when someone looked into a nearby tree where nine eagles were perched. From then on the post office was known as "Nine Eagles", a name the park later inherited.

CAMPING INFORMATION

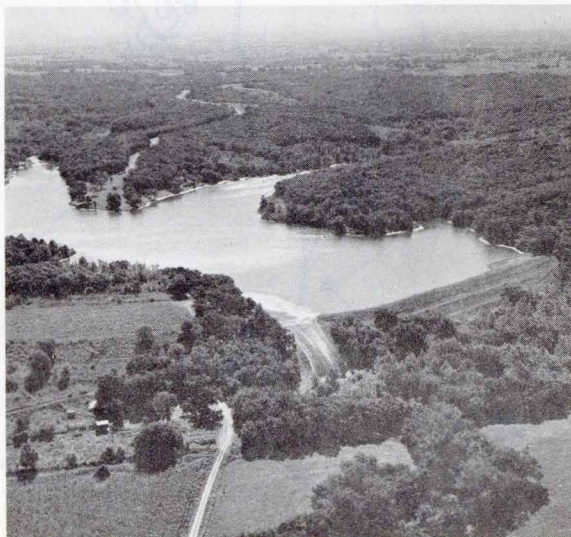
Nine Eagles State Park will accommodate 128 camping units. There are electrical hook-ups available for those who prefer the modern touch. Nine Eagles camp sites are classified as modern as there are flush toilets and shower facilities available. All camping permits are issued by the park ranger. For camping rates, see the enclosed insert.

A basic camping unit is the portable shelter used by one to six persons. Only one vehicle may be used for transportation in the camp area. All other motor vehicles will be parked in the visitor parking area and so marked. Any persons over the basic unit of six will be charged 25 cents per person.

SURROUNDING TOWNS

DAVIS CITY, 5½ miles northwest, and **PLEASANTON**, one mile south, are the closest towns to Nine Eagles.

LEON, 8 miles north on Highway 69, and **LAMONI**, 7 miles west on Highway 69, are the closest larger towns. Both have groceries, recreational facilities and churches.



EQUAL RECREATIONAL OPPORTUNITIES: All persons are entitled to full and equal enjoyment of the recreational opportunities, privileges and advantages available in Iowa's great outdoors.

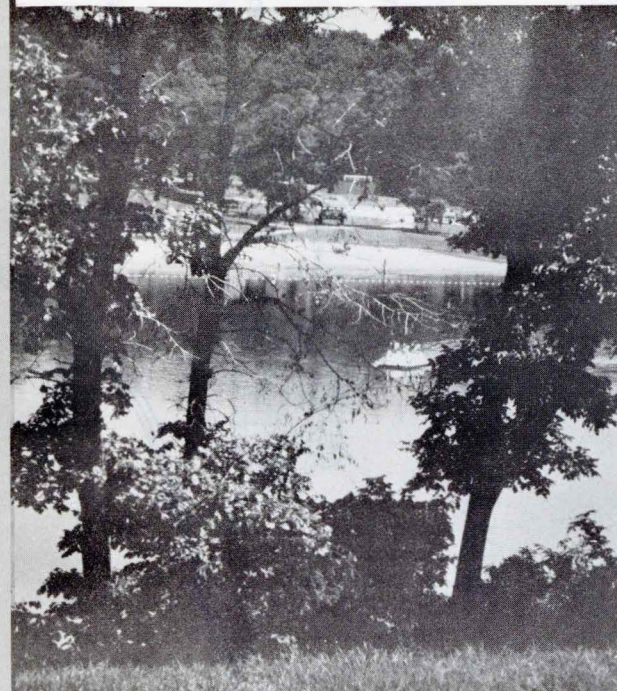
State park maintenance and operation funds are derived solely from legislative appropriation and receipts from camping and concession revenue, cabin and lodge rental and boat dock fees.

IOWA CONSERVATION COMMISSION
WALLACE STATE OFFICE BLDG.
DES MOINES, IOWA 50319

SEP 1 1982

17
C755
7:N714
1982

Nine Eagles State Park



PARK RANGER ADDRESS
Nine Eagles State Park
Davis City, Iowa 50065

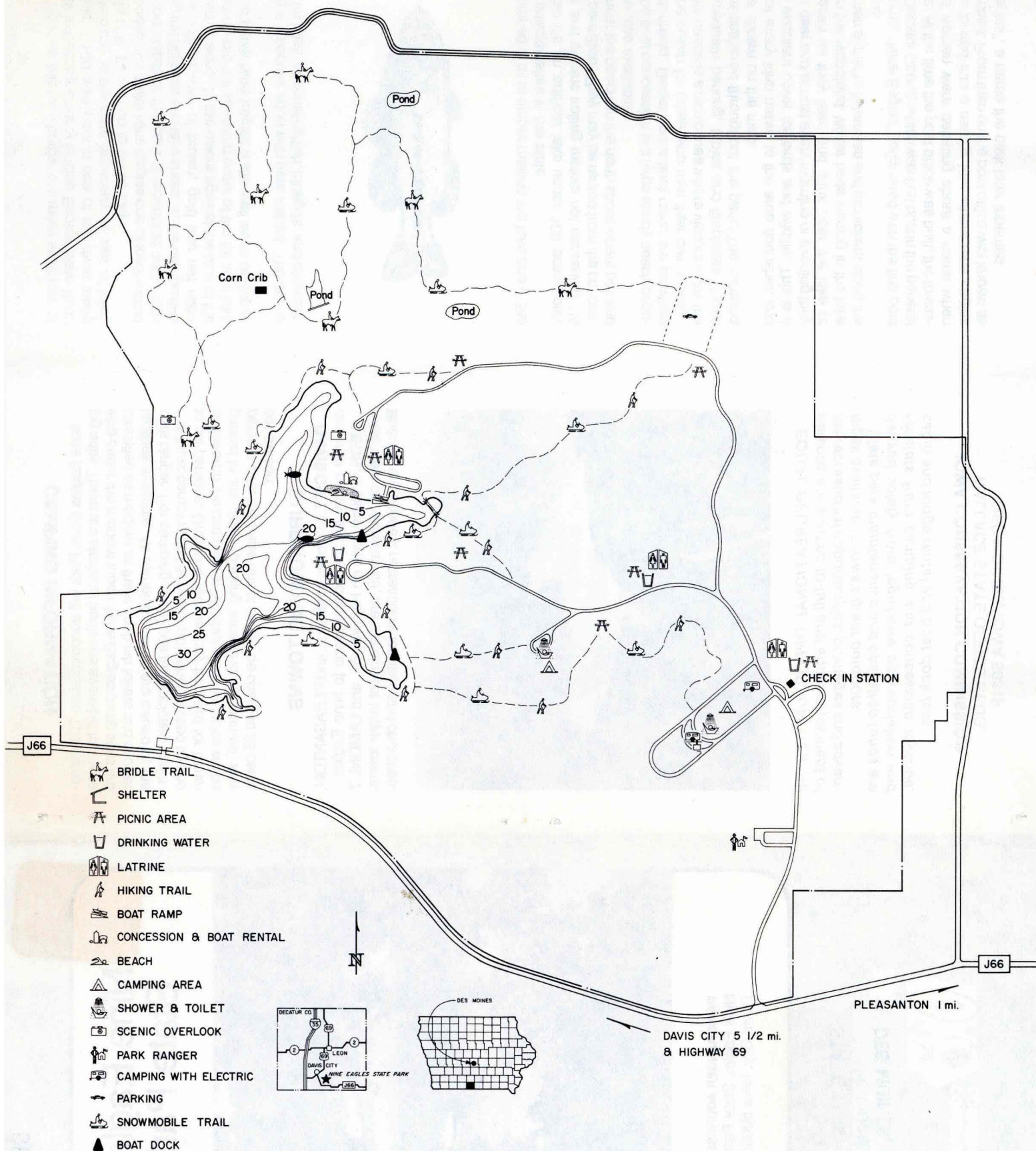
STATE LIBRARY OF IOWA
17 C755 7:N714
/Nine Eagles State Park sdoc



Historical Building
DES MOINES, IOWA 50319



CONSERVATION
COMMISSION



BRIDLE TRAIL 5 MILES LONG
HIKING TRAIL 4 MILES LONG