

**KOWA**  
DEVELOPMENT  
COMMISSION  
VISITORS & TOURISM  
600 E. COURT AVENUE  
DES MOINES, IOWA 50309

F  
619.3  
.M56  
1985

# Iowa

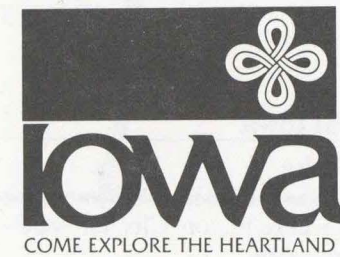
COME EXPLORE THE HEARTLAND<sup>SM</sup>

JUN 28 1985



## Mini-Vacation Guide

# Mini- Vacation Guide of Iowa



The maps in this booklet have some detail removed to increase clarity. It is suggested that an official Iowa Transportation Map be used in conjunction with this publication for information on all Iowa roads and communities.

Iowa Development Commission  
600 E. Court  
Des Moines, Iowa 50309  
515-281-3100

75,000 copies of this report were produced at a total printing cost of \$17,981.00. Unit cost \$0.24.



## MORE ABOUT IOWA

The Iowa Development Commission maintains free brochures on attractions, events, lakes and other items of interest to the visitor. For detailed information on areas, points of interest, events or lodging phone (515) 281-3100 or write Visitors & Tourism, Iowa Development Commission, 600 East Court, Des Moines, Iowa 50309.

Whether you appreciate beautiful scenery, lakes and rivers, history or the fun of festivals, Iowa will surprise you with its variety.

On the following pages are suggestions for spending a great weekend, a mini-vacation or just a day's diversion from a longer trip to unwind, relax and enjoy before moving on. Follow the suggested loops, part of a loop, or mix them if you wish. That's the fun. There is also room for the explorer in you because all of the areas contained in this booklet have more to offer than what is listed.

Iowans are known for their friendliness and, if given a chance, may tell you about something totally new to see or do while in their area. Visit a cave or rent a canoe or a sailboat for an hour or two. Have a picnic lunch or a fine dinner. Spoil yourself, be a little different. Relax and enjoy. Iowa's waiting for you.

## TOURIST WELCOME CENTERS

Seven welcome centers are located in Iowa's interstate systems to answer visitor questions and provide additional visitor publications. The centers are staffed and open from mid-May through mid-September. They are:

### Western Iowa

#### Sergeant Bluff

On I-29 south of Exit 141 south of Sioux City for southbound travelers.

#### Underwood

On I-80 north of Exit 17 northeast of Council Bluffs for eastbound travelers.

### Central Iowa

#### Clear Lake

On I-35 south of Exit 197 just north of Clear Lake/Mason City for southbound travelers.

#### Des Moines

On I-80 west of Exit 121 just west of Des Moines for westbound travelers.

#### Davis City

On I-35 north of Exit 4 near the state line for northbound travelers.

### Eastern Iowa

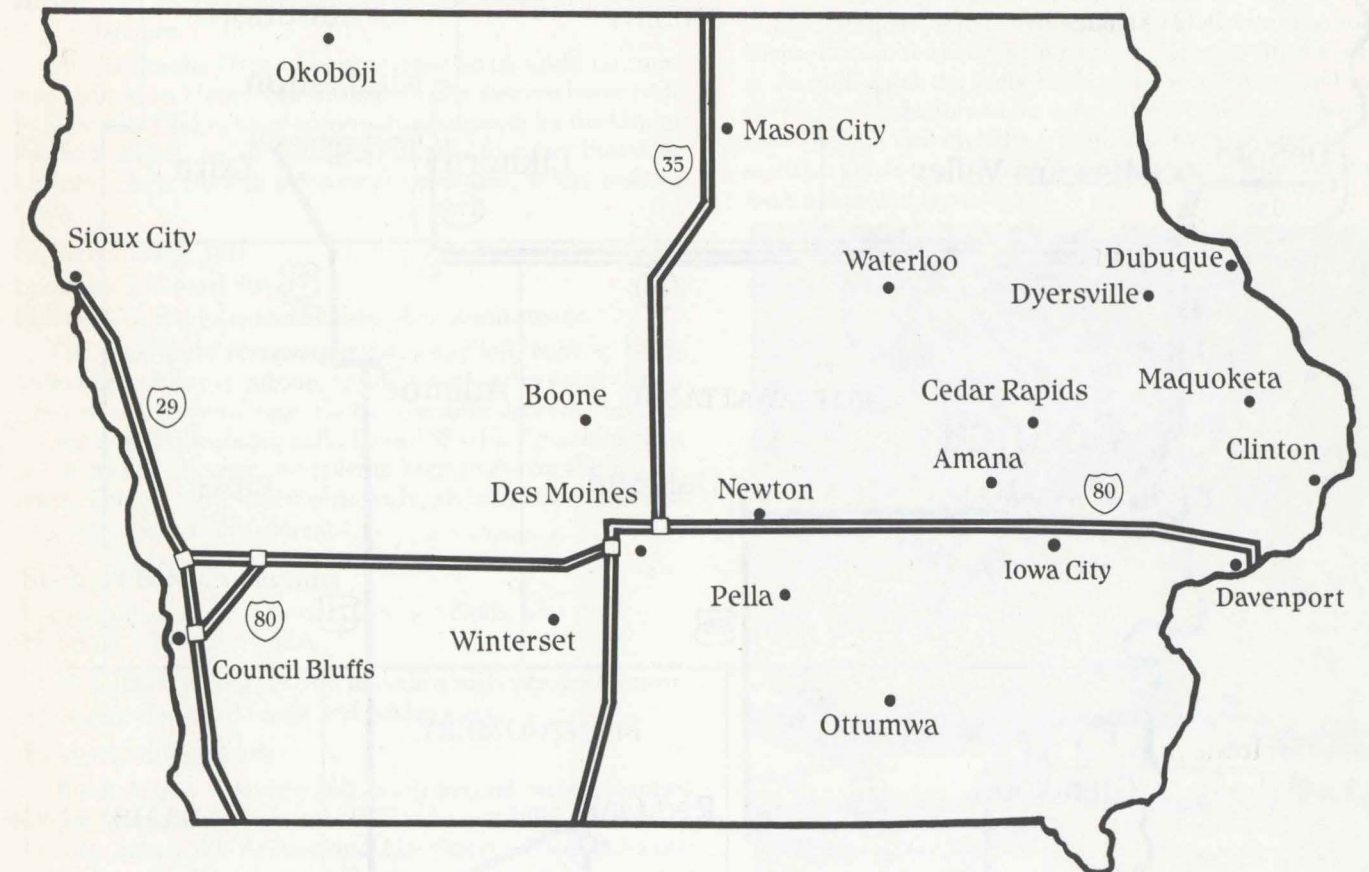
#### Victor

On I-80 east of exit 205 west of Iowa City for eastbound travelers.

#### Wilton

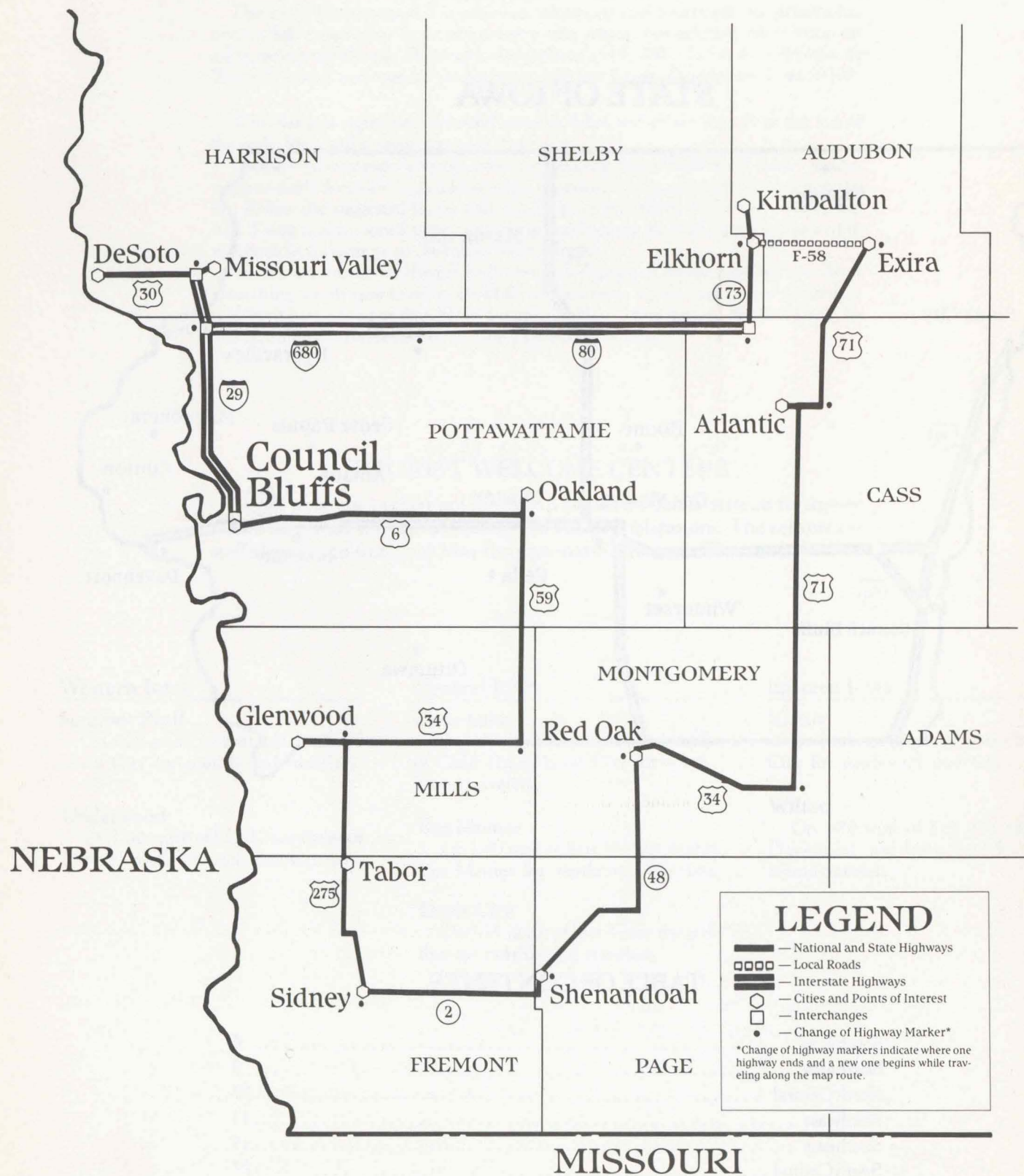
On I-80 west of Exit 271 between Davenport and Iowa City for westbound travelers.

## STATE OF IOWA



## TABLE OF CONTENTS

Southwest .....	4
Northwest .....	7
North Central .....	10
Northeast .....	13
Southeast .....	17
South Central .....	22
Des Moines .....	25
Amana Colonies, Cedar Rapids, Iowa City .....	29
Dubuque .....	36
Iowa Great Lakes .....	39



Total miles: Approximately 300 miles

**Council Bluffs**

**General Dodge House**

**Location:** East of I-29 on US-6, then south on 4th St. to Story St.

**Hours:** 10-5 Tuesday-Saturday, 1-5 Sunday, closed Monday and January.

Children under 16 must be accompanied by adult; no cameras. Admission charge. See the extravagant restored home built by Grenville Dodge, chief construction engineer for the Union Pacific Railroad, a Civil War general, and friend of President Lincoln. Designated as a National Landmark, it was built in 1869.

**Squirrel Cage Jail**

**Location:** 226 Pearl Street

**Hours:** 1-5, Saturday and Sunday. Admission charge.

The three-story Pottawattamie County Jail, built in 1855, looks tame from the outside. Inside there's a three-story drum surrounded by a metal cage. Each of the three decks of the drum consisted of 10 pie-shaped cells. From 1885-1887 the drum spun continuously, allowing one jailer to keep an eye on all the prisoners. This jail is the largest of six such jails (also called lazy susan or rotary jails in the Midwest).

**Stempel Bird Collection**

**Location:** Courthouse Annex, Council Bluffs, IA.

**Hours:** 8-5 Monday-Friday

A display of mounted birds, including such rare species as the whooping crane, bald eagle and golden eagle.

**Historical Markers**

Black Angel, Lafayette and North Second Street; General Dodge Mausoleum; Walnut Hill Cemetery at 1294 East Pierce; Golden Spike, 9th Avenue and 21st Street; Kinsman Monument, Fairview Cemetery at 308 Lafayette; Lincoln Monument, north on Oakland Avenue; Mormon Trail Monument. Bayliss Park at First Street and Pearl; and Lewis and Clark Monument, Rainbow Dr., north.

Depart **Council Bluffs** on I-29 to Exit 75 to:

**Missouri Valley**

**DeSoto National Wildlife Refuge**

**Location:** 9 miles west of I-29, Exit 75 just off US-30

DeSoto is a part of the network of national wildlife refuges. This is a major feeding and resting place for geese and ducks migrating along the Missouri River Valley. Peak viewing months are March, April, October and November. American bald eagles and many mammals may also be seen.

Also located in the refuge is a new visitor's center. Here you'll find hundreds of artifacts salvaged from the Steamboat Bertrand, which sank in the Missouri River in 1865. In addition, murals within the museum recreate the history of this boat which had been buried for more than 100 years under silt and sand.

Return to I-29 south, follow to I-80 east to Exit 54.

Take IA-173 north to:

**Elk Horn**

**Danish Windmill**

**Hours:** 9-7 daily, summer and fall; 9-5 daily, winter and spring.

This authentic Danish Windmill built in 1848 in Norre Snede, Denmark, is today reassembled in the heart of one of the largest Danish settlements in the U.S. See the inner workings of the mill, climb the stairs inside to the second floor and watch the 66-foot blades turn in the wind. Flour is ground on the premises. The site also includes a millhouse (now serving as a museum), a gift shop and an information center. Delicious Danish foods are available nearby.



Danish Windmill in Elk Horn

Depart **Elk Horn** on IA-173 north to:

**Kimballton**

**Replica of Copenhagen Harbor Mermaid Statue**

A replica of Hans Christian Anderson's Little Mermaid graces the Kimballton city square.

Depart **Kimballton** on IA-173 south. Then county road F-58 east to:

**Exira**

**Audubon County Historical Museum**

**Location:** Main Street

**Hours:** 2-4 Sundays, June-September

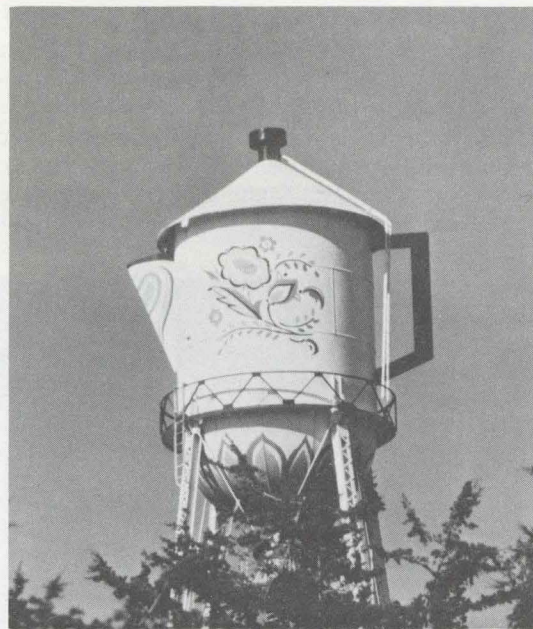
See displays that preserve the area's bygone days — Indian artifacts and pioneer articles.

**Plow in Oak Park**

**Location:** One mile south of Exira on US-71

A 5-acre roadside park containing an ancient oak tree with an old iron plow embedded in its heart. The plow was leaned

against the young oak by the son of a pioneer farmer and left undisturbed. It is said to have been rediscovered in 1880 when the railroad was built through this area. As the tree grows, less and less of the plow is visible and it no longer rests on the ground. The oak now measures over 104 inches in circumference.



Stanton Coffee Pot

Depart on US-71 south to US-34 west to:  
**Stanton**

#### Stanton Coffee Pot

What can you make out of an old water tower? How about a huge coffee pot? Definitely the world's largest. It rises 125 feet above Stanton's skyline.

To the Swedes who live in Stanton, the huge coffee pot signifies hospitality, a basic element of home and community life. They follow their homeland traditions by celebrating such Swedish festivals as "Santa Lucia" and "Skona May."

(Mrs. Olson, of Folger's coffee fame grew up in Stanton.)

Depart on US-34 west to:  
**Red Oak**

Points of Interest (Walking Tour — Shelter — Union Carbide)

#### Union Carbide

Location: 1205 Broadway

Tours may be arranged but are normally just given to local groups. No cameras. Must be 12 years of age. The manufacturing of dry batteries can be seen.

Take IA-48 south out of **Red Oak** to **Shenandoah**. Then US-59 south to IA-2; west to:  
**Sidney**

#### Fremont County Historical Museum

Location: On east side of courthouse square

**Hours:** 1-4 Sunday, Memorial Day-Labor Day; open during rodeo week.

Displays range from Mastodon tusks and Indian exhibits to pioneer period rooms and farm implements. An 1890s church and one-room school complete the museum complex.

Depart on US-275 north to:  
**Tabor**

#### Todd House

Location: 2 blocks west of business district. (Call for appointment 712-629-2675 or 712-629-3485).

This small frame home built in 1853 served as a station on the underground railroad, as well as an arsenal and hospital for the Kansas Free State Fight.

Return to US-275 traveling north to US-34 to:  
**Glenwood**

#### Mills County Historical Society Museum

Location: Glenwood Lake Park on east edge of city

Hours: 2-5 Sunday, May 30-September 1.

Young children must be accompanied by adult. A variety of artifacts, antique furniture, fine china, military mementos, machinery and more are housed in three buildings.

Depart north on US-34 east out of **Glenwood** to US-59 north to:  
**Oakland**

#### Nishna Heritage Museum

Location: 117 N. Main

Hours: 9-5 Monday-Saturday; 1:30-5 Sunday May 15-September 15; 1-5 Wednesday; 9-12 Saturday, 1:30-5 Sunday, September 15-May 15.

A former general store tells the history of the Oakland area. You'll find everything a small city in Iowa would have had 100 years ago depicted here. Redecorated turn-of-the-century architecture along Main Street brings alive those bygone days.

#### Selected Festivals in Southwest Iowa:

Late June

Shenandoah: "Golden Age" Radio Reunion Festival

Early July

Creston: Railroad Heritage Days

Mid-August

Sidney: Iowa Championship Rodeo

Early September

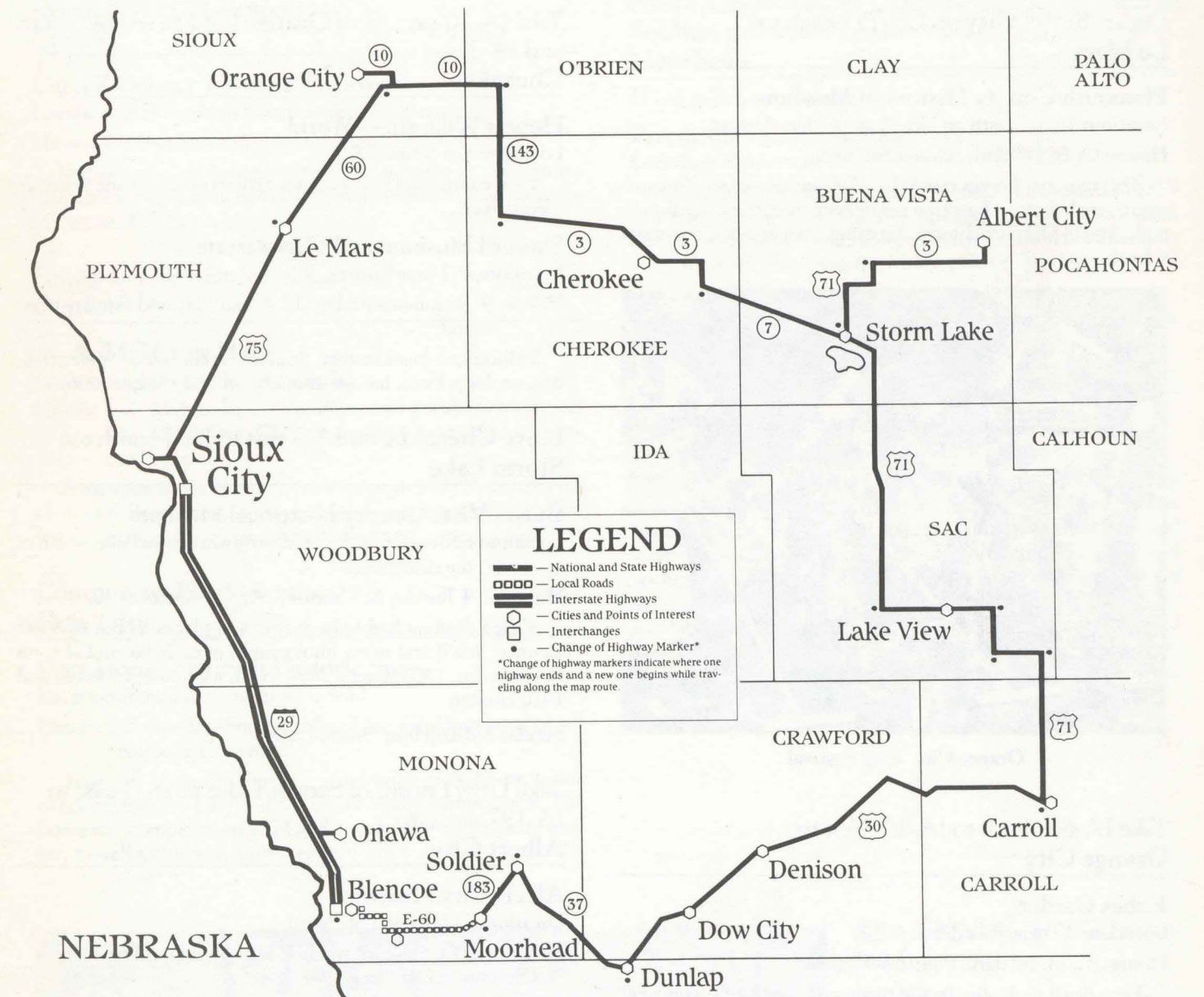
Avoca: National Old-Time Country Music Contest

October/November

Southwestern Iowa: Migratory Waterfowl Migration Missouri River

Twice each year — in the spring and especially in the fall

## NORTHWEST



**Total miles: Approximately 285 miles**

#### Points of Interest in Sioux City

##### K. D. Stockyards Station

Location: US-20 and US-75, 2001 Leech Ave.

Hours: 11-7 Monday-Friday; 12-5 Saturday and Sunday

Located in the heart of the Sioux City stockyards, the massive brick exterior of the old Swift Packing Plant is becoming one of the most unusual shopping centers in the Midwest, filled with specialty shops, eateries and even a bowling alley.

##### Sioux City Art Center

Location: North on Nebraska St. from I-29, Business Exit

Hours: 5-8 Monday, 10-5 Tuesday-Saturday, 1-5 Sunday

The center of art and culture for the community contains permanent and changing exhibits, children's gallery and special programs. Painting, sculpture, photography, and prints (concentrates on midwestern artists).

##### Sioux City Public Museum

Location: 29th and Jackson Streets

Hours: 9-5 Tuesday-Saturday, 2-5 Sunday; closed holidays

Housed in the Pierce Mansion, the museum is stocked with displays on anthropology, archaeology, natural history, science and history, military memorabilia and period costumes.

##### Floyd Monument

According to historical record, the first white men to explore present day Sioux City were Lewis and Clark in 1804. During their stay, a member of the party, Sergeant Charles Floyd, died and was buried on a high bluff overlooking the Missouri River. The Floyd Monument, a stone memorial located on the bluff, was the first national historical landmark in the U.S.

In 1848, 44 years after Floyd's death, pioneers began settling here and as the West was settled, Sioux City prospered as a steamboat, railroad and livestock center.

Depart **Sioux City** on US-75 North to:  
**Le Mars**

### Plymouth County Historical Museum

**Location:** 1 mile south on US-75 at Le Mars Airport

**Hours:** Open 1-5 daily, closed Saturday

This museum houses more than 500 antique musical instruments, including an Egyptian cradle harp from the King Tut period. Also old farm machinery, log cabin, Indian relics, one-room school.



Orange City Tulip Festival

Take IA-60 North to IA-10 West to:  
**Orange City**

### Kobes Garden

**Location:** 403 Frankfort Ave. N.E.

**Hours:** 8 a.m. till dark, April 15-October 1

Here you'll find tulips by the thousands, roses, reflection lake, century-old love seat and altar gate, waterfalls, pools and fountains. An old mill wheel, rock gardens, oriental garden and tea house statues and Ye Old Dutch Curio Shop.

### Old Mill

**Location:** ¼ mile south of IA-10

**Hours:** 9-5 Monday-Friday, May-October

A replica of the mills of Holland. Take note of how grain was ground with wind power. The interior Dutch room, living quarters of a typical Dutch family, is furnished with antiques imported from Holland.

Take IA-10 east out of **Orange City** to IA-143 south and IA-3 east to:

### Cherokee

#### Hope's Wilderness World

**Location:** US-59 and IA-3

Rent canoes and enjoy a guided river trip along one of Iowa's scenic rivers.

#### Sanford Museum and Planetarium

**Location:** 117 East Willow

**Hours:** 9-5 Monday-Friday, 12-5 Saturday and Sunday year-round

Exhibits on local history, Indians, archaeology, paleontology, geology, birds, ice age animals, art and antique furniture.

Leave **Cherokee** on IA-3 east to IA-7 south to:  
**Storm Lake**

### Buena Vista County Historical Museum

**Location:** Fifth and Erie St., in downtown Storm Lake, south of the courthouse.

**Hours:** 2-4 Tuesday & Thursday, April 1-October 30.

Varied displays highlight events and places in Buena Vista County. You'll find many photographs of early Storm Lake, an 1870s parlor, 1900 general store, barn, ice house, bedroom and 1910 kitchen.

Sunday Sidetrip from Storm Lake.

Take US-71 north of **Storm Lake** to IA-3 east to IA-197 north to:

### Albert City

#### Albert City Museum

**Location:** 212 Second St. North

**Hours:** 1:30-4 Sundays and holidays. Memorial Day - 2nd Sunday in October.

Tour the old Chicago, Milwaukee & Pacific Railroad Depot, listed on the National Register of Historic Places. The depot, built in 1899, was once the site of a shootout - ask! And visit a 1900 furnished home. You'll see old cars (1889-1919), antique glassware, china, music boxes and more.

Return to US-71 south to **Lake View**. (More direct route to **Lake View** is: Depart **Albert City** on IA-197 south to IA-3 west. County road M-54 south to IA-175 west into: **Lake View**.)

### Black Hawk Lake

The 925-acre natural lake serves as focal point for Black Hawk State Park. The development includes hiking trails, swimming, boating, fishing, picnicking and has boat rentals. Camping area has 176 sites.

Depart on US-71 south to:  
**Carroll**

### Carroll County Historical Museum

**Location:** US-30 across from courthouse square

**Hours:** 1-4 Sundays and holidays, April 15-Dec. 15

Displays of early county history are at home in this former Carnegie Library, built in 1905. Listed in the National Register of Historic Places.

Follow US-30 west out of **Carroll** to:  
**Denison**

### W. A. McHenry House

**Location:** 1428 First Avenue North

**Hours:** 1-4 Wednesdays, Thursdays, and Sundays, Memorial Day-Labor Day. Children under 16 must be accompanied by adult.

A museum is maintained in this spacious 1885 house that includes a ballroom and six fireplaces - a Victorian mansion that was once the home of a wealthy banker and cattle breeder.

Continue on US-30 west to:  
**Dow City**

### Dow House National Historic Site

**Location:** Four blocks south of US-30

**Hours:** 1-5 Tuesday-Sunday, May-Nov. Children must be accompanied by adult.

Tour this beautiful 10-room, solid-brick prairie farm house overlooking Dow City and the Boyer Valley farming area. The home was completed in 1874 and became the area's social center, as well as a haven for travelers.



Blackhawk Lake

Follow US-30 west to **Dunlap**, take IA-37 west to **Soldier**, and follow IA-183 west to:

### Moorhead

(Five miles southwest)

### Preparation Canyon State Park

**Location:** 8 miles east of I-29

About 50 to 60 Mormon families settled at this point in 1853 to weather the winter. The 187-acre park includes many small streams and springs, wild flowers, canyons and a commanding view of Loess Hills above the Missouri River flood plain.

Depart on county road E-60 west to **Blencoe** and take I-29 north to:

### Onawa

### Lewis and Clark State Park

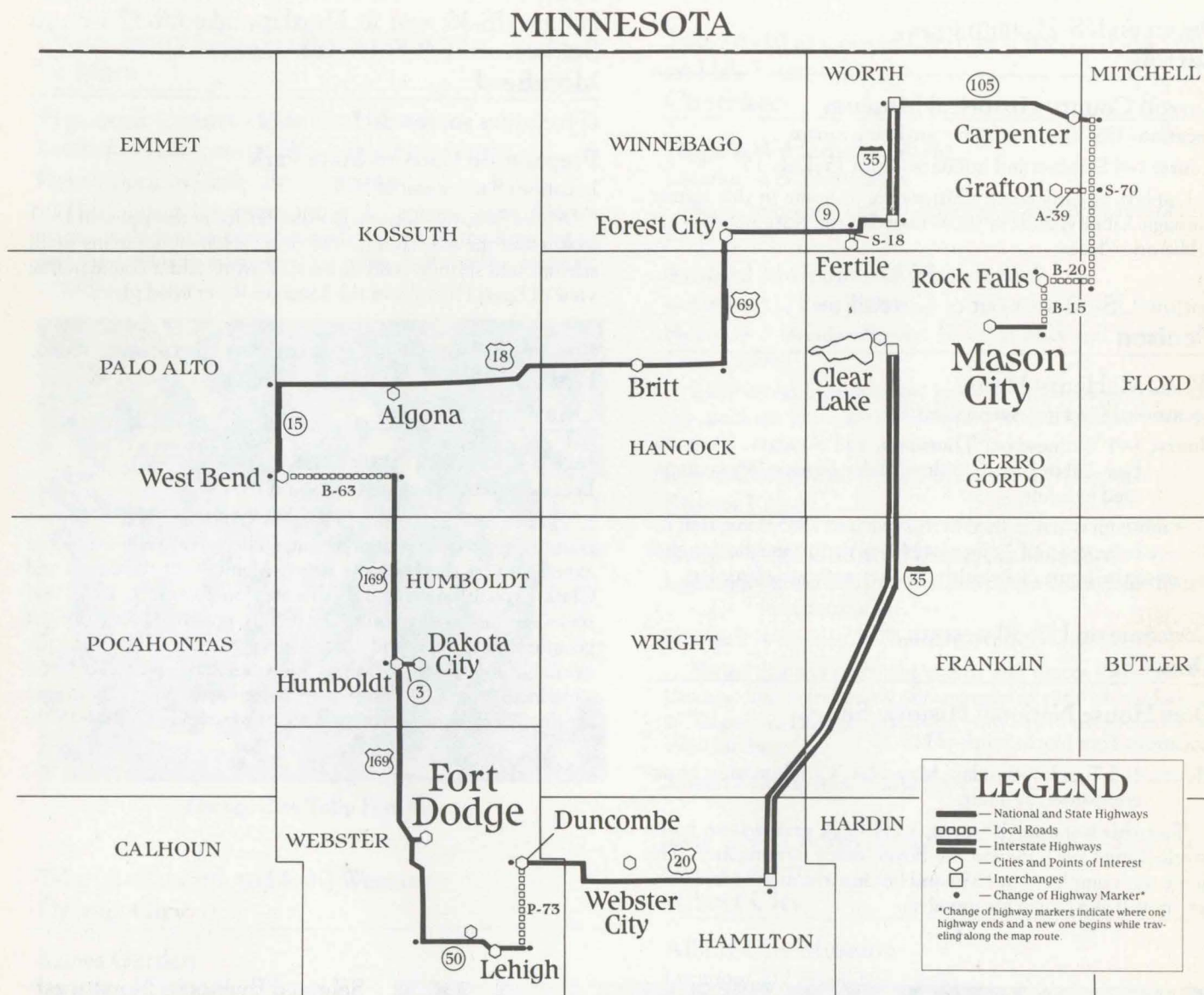
**Location:** 2 miles west of Onawa on IA-175

Named for Meriwether Lewis and William Clark, who were commissioned by President Thomas Jefferson in 1804 to head an expedition up the Missouri River. Members of the Lewis and Clark Expedition arrived in this area on August 9, 1804, and spent several days exploring the region, making observations of geography and plant and animal life. Recreational facilities are available for skiing, boating, snowmobiling, picnicking and camping; nature trails transverse the heavily wooded park. There are flood plains and sandy areas adjacent to 982-acre Blue Lake.

### Selected Events in Northwest Iowa:

Late May  
Orange City: Tulip Festival  
Cherokee: Memorial Weekend Rodeo  
Early July  
Storm Lake: Star Spangled Spectacular  
Late July  
Sioux City: Sioux City RiverCade

# NORTH CENTRAL



**Total miles: Approximately 285 miles**

## Points of Interest in Mason City

### Mason City/Clear Lake

#### Charles H. MacNider Museum

**Location:** 303 Second St. S.E., 2 blocks west of US-65

**Hours:** 10-9 Tuesday and Thursday; 10-5 Wednesday, Friday and Saturday; 1-5 Sunday.

This stone museum in Mason City houses permanent and changing displays of American art. Exhibits range in media and style — and from regional to international in flavor. The Museum also owns a special collection of the Bill Baird puppets. Nearby is the Meredith Willson footbridge.

### Kinney Pioneer Museum

**Location:** 7 miles west on US-18 at entrance to Mason City airport

**Hours:** 12-5 Wednesday-Friday and Sunday, May 1-October 31

Exhibits of the early history of northern Iowa and the development of agriculture and industry in the area.

You can explore those bygone days of Northern Iowa as you wander through restored rooms furnished with 1800 artifacts, visit an 1890 schoolhouse, see old farm equipment, buggies, wagons and much, much more.

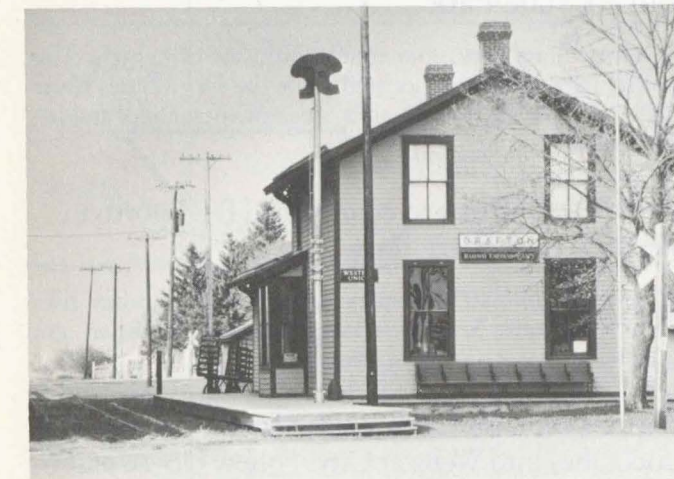
Depart **Mason City** on US-18 east to county road B-15 north to B-20 east to S-70 north to A-39 west  
**Grafton**

### Grafton Heritage Depot

**Location:** Main St.

**Hours:** 1:30-5 Sundays, Memorial Day-Labor Day

Step back in time as you tour this turn-of-the-century depot. Listed on the National Register of Historic Places.



Grafton Heritage Depot

Depart on county road A-39 east and return to County Road S-70 north to IA-105 west to:

### Carpenter

### Fort Severson

A limestone agricultural building constructed in 1867 by a Norwegian immigrant, it has long been known locally as "Fort" Severson. This designation was given to a variety of structures in the pioneer days. Although not originally built as a fortification, it may have served early settlers as such against both natural and human dangers. It is on the National Registry of Historic Places.

Continue on IA-105 west to I-35 south, leave I-35 at exit 203. Take IA-9 west to county road S-18 south to:

### Fertile

### Fertile Mill Park

**Location:** South edge of Fertile

A 10-acre park including a millpond and dam. In 1879, Iowa had 712 flour and grist mills. Today, there are probably no more than 18 of these vanishing landmarks, and none of those still operating are powered by water alone.

William Rhodes, who founded the city of Fertile, built this mill more than a century ago. In those days it was basically a flour mill; today it is used for grinding feeds. The huge gears which once turned the mill are still intact.

The 110-foot-long dam spanning the Winnebago River is part of the 10-acre park. This is now the only dam on any river in Worth County. The park is a popular spot to fish, boat, swim and picnic.

Depart **Fertile** on county road S-18 north to IA-9 west to:

### Pilot Knob

### Pilot Knob State Park

**Location:** 4 miles east and 1 mile south of Forest City

A 369-acre tract of hills and ridges, heavily wooded with native hardwoods. Pilot Knob, one of many odd-shaped glacial formations in the area, rises 300 feet above the surrounding valley. In pioneer days this knob was a landmark used to guide travelers. From the 40-foot high lookout tower on Pilot Knob a 35 mile panorama unfolds.

Continue west to:

### Forest City

### Timberland Museum

**Location:** Follow road signs from Pilot Knob State Bank

**Hours:** 1-6 Sundays, June 1-October 15

Pioneer and Indian artifacts from the local area are exhibited.

### Winnebago Industries

**Location:** IA-9 and US-69

**Hours:** Monday-Friday at 2 p.m. October-April, 10 a.m. and 2 p.m. May-September

No cameras or pets allowed. Manufacturing and assembly of motor homes, travel trailers and pickup truck covers will be seen. No charge.

Depart Forest City on US-69 south to US-18 west to:

### Algona

### Pioneer Drug Store Museum

**Location:** US-18 West, near Algona. Located in home office building of Druggists Mutual Insurance Company

**Hours:** Monday through Friday, 8:30 a.m.-4:00 p.m.

Re-creation of a drug store, typical of the early 1900s with a soda fountain, wire chairs and table, prescription department, display cases filled with old bottles, eye glasses, false teeth and other items. Free.

### Kossuth County Historical Museum

**Location:** 1 block south of Main St. at corner of Nebraska and Dodge

**Hours:** 1:30-3:30 Fridays during summer. No children under five

Three floors of exhibits are housed in Algona's first school which was built in 1867. Not only can you explore period rooms, but you'll discover a variety of war momentos, furniture, tools and more.



Grotto of Redemption

Take US-18 west to IA-15 south to:  
**West Bend**

**Grotto of Redemption**

**Location:** 2 blocks off IA-15 at the north end of West Bend  
**Hours:** 8-5 daily, guided tours hourly; masses at 7 and 9 Sunday.

The area is a composite of nine separate rock grottos, each portraying a scene in the life of Christ. The work was begun in 1912 by Father Paul Dobberstein, who worked 42 years setting ornamental rocks and gems into concrete. The grotto has an estimated geological value over \$2,500,000.

Depart **West Bend** on county road B-63 east to US-169 south into **Humboldt** and follow IA-3 east to:  
**Dakota City**

**The Mill Farm, Humboldt County Historical Museum**

**Location:** East of US-169 on IA-3, then south on county road P56 towards Dakota City; on east side of the Des Moines River.

**Hours:** Closed Wednesday. 1-4:30 daily, 1:30-4:30 Sunday, May 31-August 31

Listed on the National Register of Historic Places, the stately home, built of native brick in 1879, has been restored and furnished with Victorian pieces. In addition, you will tour a school house, barn, log cabin, jail and chicken house on the grounds.

Return to IA-3 west to US-169 south to:  
**Fort Dodge**

**Blanden Memorial Art Gallery**

**Location:** 1 block south of US-30 and 1 block west; turn right on South 12th St. when entering Fort Dodge from the east.

**Hours:** 1-5 Tuesday-Sunday, 1-8:30 Thursday, closed Mondays and holidays

American and European paintings and sculpture, 19th and 20th century graphic art, drawing, 17th century Oriental decorative arts and contemporary photography.

**Fort Museum**

**Location:** US-20 west, east of junction of US-20 and US-169  
**Hours:** 10-5 Monday-Saturday, 12-5 Sunday, May-October.

The fort is an exact replica of a government fort built to protect area settlers from the Sioux Indians. The museum includes a graphic record of the area's history and a curio shop. Frontier village has school, jail, blacksmith shop and general store.

Depart on US-169 south to IA-50 east to:  
**Dolliver State Park**

Dolliver State Park, four miles northwest of Lehigh. The beautiful 600-acre park is located along the Des Moines River and is known for its massive cliffs, deep ravines, caves and Indian mounds.

Return to IA-50 east to county road P-73 north to:  
**Brushy Creek State Park**

This beautiful 4,205-acre park includes 175 campsites, hiking and bridal paths. Scenic overlooks and stream fishing are also available.

Continue on P-73 north to US-20 east (intersect at Duncombe) into Webster City. Follow US-20 east to IA-35 north back to Exit 194 to:

**Clear Lake**

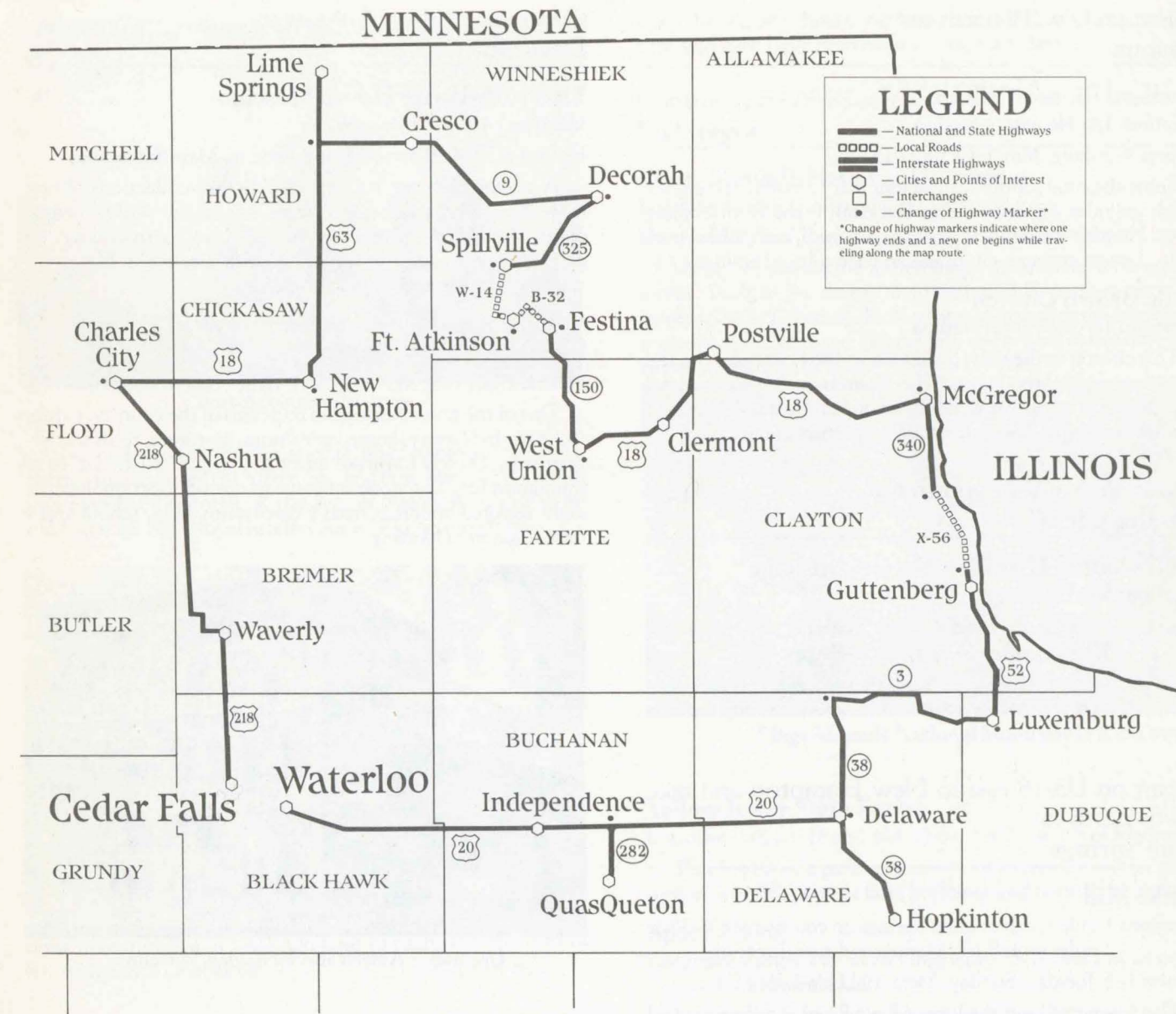
One of Iowa's few spring-fed lakes was formed by glaciers and is over 14,000 years old. This spot was a favorite summer camp for the Sioux and Winnebago Indians and was first visited by white men in 1851.

Even today, it's a favorite summer camp and playground.\* Beautiful parks, exhilarating sailing, fishing, swimming and golf are just a few of the activities to fill the hours.

**Selected Events in North Central Iowa:**

- Late May  
Mason City: North Iowa Band Festival
- Early June  
Forest City: Frontier Days
- Mid June  
Eagle Grove: Scandinavian Dager Celebration
- Early August  
Britt: National Hobo Convention
- Late August  
Dayton Rodeo

**NORTHEAST**



**Total miles: Approximately 348 miles**

**Points of Interest in Waterloo/Cedar Falls**

**Grout Museum of History and Science**  
**Location:** Park Avenue and South St. off US-218  
**Hours:** 1-4:30 Tuesday-Friday; 1-4 Saturday

Early American arts and crafts, pioneer and Indian exhibits, musical instruments, Civil War relics and 1850-1920 costumes. Also has earth and science displays, planetarium and library.

**Rensselaer Russell House**  
**Location:** 503 West Third (and South Streets) facing Washington Park  
**Hours:** 1:30-4 Wednesday and Sunday; closed January-March

A mid-Victorian home restored to 1861 vintage includes original furnishings. An oriental pagoda and gardens are located in the park across the street.

Depart **Waterloo/Cedar Falls** on US-218 north to:  
**Waverly**

**Schild International Museum**  
**Location:** Bremer Ave. on US-218 across from Wartburg College  
**Hours:** 1-5 daily, June 1-Labor Day

Collection of unusual objects from far away places acquired by self-made millionaire machinery manufacturer. Persian rugs, cars, tractors, elephant tusks, etc.

**Waverly House**  
**Location:** 402 West Bremer Ave.  
**Hours:** 1:30-4 Tuesday-Saturday and 2-4 Sunday, May-October

Built in 1865 of native timbers and brick as a hotel and stage-coach stop. Over 1,900 pioneer items are on display as well as period rooms.



Depart on US-218 north to:  
**Nashua**

**Bradford Pioneer Village**

**Location:** IA-346 east of Nashua  
**Hours:** 9-5 daily, May 1-October 15

Enjoy the rural solitude as you tour this 13-building complex which includes a country store, blacksmith, the Fredricksburg depot, Heritage House, old Greenwood School, craft school from Ionia, 3-room cottage, gift house and agricultural building.

**Little Brown Church**

**Location:** IA-346 east of Nashua

This church in the vale, dedicated in 1864, was built on the spot that inspired the hymn "The Church in the Wildwood." The church is a popular wedding chapel and a reunion is held the first Sunday in August for couples married there.

Continue on US-218 north to:  
**Charles City**

**Floyd County Historical Society Museum**

**Location:** 500 Gilbert St.  
**Hours:** 1-4:30 Saturday and Sunday, May and September;  
1-4:30 Thursday-Sunday, June-August

A collection of over 10,000 items includes a drug and grocery store, period rooms, old schoolroom, blacksmith shop and reference library.

Depart on US-18 east to **New Hampton** and take US-63 north to:

**Lime Springs**

**Lidtke Mill**

**Location:** 1 mile north of Lime Springs on county road V-36 or 2 miles off US-63. Markers indicate directions  
**Hours:** 1-5 Tuesday-Sunday, Memorial Day-Labor Day.

This former mill on the Upper Iowa River is fully-equipped as it was during its milling days. The nearby miller's house is from the Victorian era with authentic furnishings.

Depart **Lime Springs** on US-63 south to IA-9 east to:

**Cresco**

**Kellow House: Howard County Historical Museum**

**Location:** 324 - 4th Ave. West  
**Hours:** 1-5 Sunday, Memorial Day-Labor Day

This Second Empire design home was built in 1880 of native stone quarried by one of Cresco's original settlers. The mansard roof with its "widow's walk" is typical of eastern seaboard homes. The home houses pioneer artifacts.

Continue on Hwy IA-9 east to:  
**Decorah**

**Ellsworth-Porter House Museum**

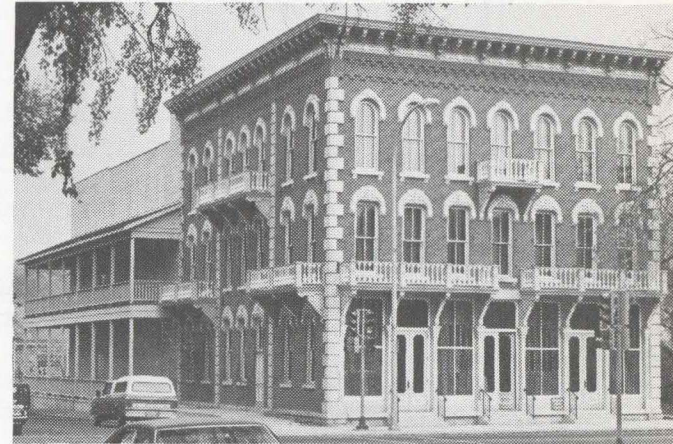
**Location:** 401 West Broadway  
**Hours:** 1:30-4:30 Saturday and Sunday, May-September

A Victorian home built in 1867 houses collections of rare butterflies, moths and insects from around the world; stamps, coins, shells and Indian relics. A rock wall surrounding the property includes unique crystal and rock specimens. Miniature waterfalls, pools and secluded gardens.

**Vesterheim, the Norwegian American Museum**

**Location:** 520 West Water St.  
**Hours:** Daily 9-5, May-October, daily 10-4 November-April

One of the finest Norwegian museums in the country, exhibits on life in Norway, house furnishings, costumes, tools and implements, church furniture and toys, which tell the story of immigrant life. The stone mill and an open-air section includes eight restored buildings from a blacksmith shop, school and a farmhouse from Norway.



Decorah - American-Norwegian Museum

Depart on IA-150 south to IA-325 west to:  
**Spillville**

**Bily Clock Museum**

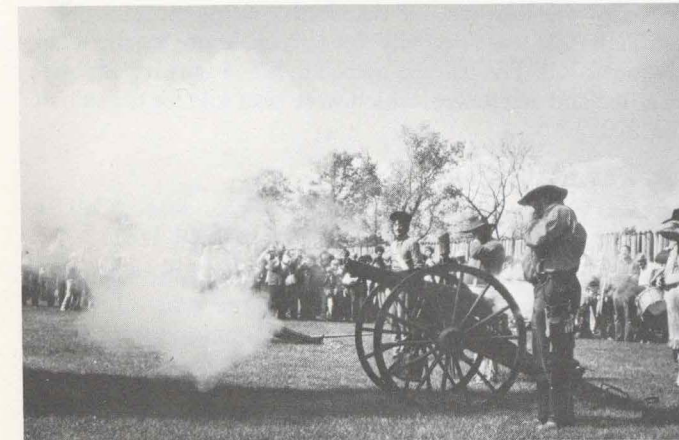
**Location:** In the Dvorak House on IA-325  
**Hours:** 8-5:30 daily, May-October; 10-4 weekends March-November

See a collection of hand-carved clocks crafted from woods around the world, housed in a building occupied by composer Antonin Dvorak in 1893. Some of the clocks feature unique mechanics.

Depart **Spillville** on county road W-14 south to:  
**Fort Atkinson**

**Fort Atkinson Preserve**

**Location:** Off IA-24 on the northwest edge of city  
**Hours:** 9-5 daily, Mid-May-Mid-October



Fort Atkinson Preserve

See the federal military post established to protect the Winnebago Indians from the Sioux, Sac and Fox. Many of the buildings have been restored. A museum of history is located in an old barracks. An annual rendezvous is held here each fall.

Depart on county road B-32 east to:  
**Festina**

**St. Anthony of Padus Chapel**

**Location:** Festina

Said to be "the smallest cathedral in the world," this little chapel seats 8 people. It was built in 1885 on the south bank of the Turkey River by Johann Gaertner (1793-1887), who had served as a soldier under Napoleon. Gaertner came to Iowa in 1846 and later dedicated the 12 x 16-foot chapel to his safe return from the disastrous winter retreat of Napoleon's army from Moscow. He and his wife and sister-in-law are buried behind the chapel in the Old Mission Cemetery. The 40-foot belfry was added in 1888, and the miniature altar and stained glass windows were installed in 1903. On June 13 each year, the feast of St. Anthony is celebrated.

Take IA-150 south to  
**West Union**

**Fayette Co. Historical Society Museum**

**Location:** On Courthouse Square, 100 N. Walnut  
**Hours:** 8-12 and 1-5 Monday-Friday, Saturday-Sunday by appointment

A variety of exhibits including local history displays, a war memorial, health care from 1850-1900, advertising and more.

Depart **West Union** on US-18 east to  
**Clermont**

**Montauk**

**Location:** 1 mile northeast of Clermont on US-18  
**Hours:** 12-5 daily, May 30-November 1

This 1874-brick and native limestone mansion was home to Iowa's 12th Governor, William Larrabee. The home was used by the family until 1965, so the graceful interior and rich furnishings are much as they were when Larrabee lived. In addi-

tion, the old well house, laundry, creamery, ice house, workshop and barn have been restored and furnished.

Continue on US-18 east to:  
**McGregor**

**Effigy Mounds National Monument**

**Location:** 3 miles north of Marquette on IA-76  
**Hours:** Daily 8-7, June-August, 8-5 September-May

About 191 prehistoric Indian burial mounds have been preserved. Built in the shapes of animals and birds, they are estimated to be 2,500 years old. A visitor center with guided tours, museum, slide show and film explain the history of the only national monument in Iowa.



Effigy Mounds National Monument

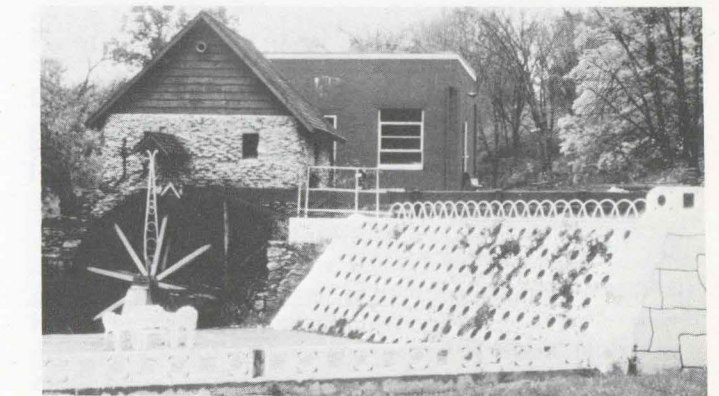
**Yellow River State Forest**

**Location:** Off IA-76 and 364, about 6 miles north of Marquette  
This 5,610-acre park contains trout streams, wildlife, state-owned sawmill, pioneer farm buildings and unusual plant life.

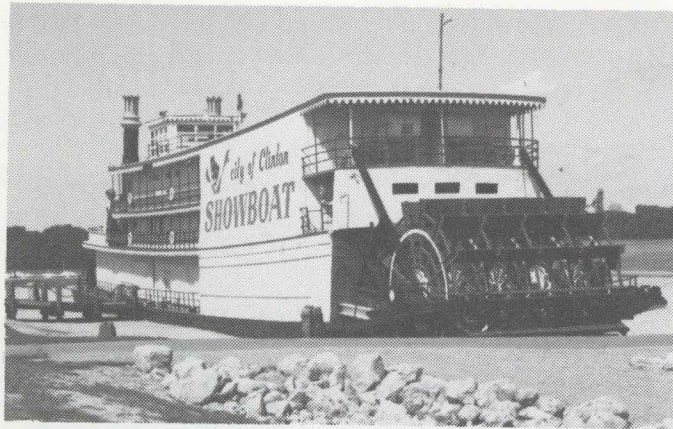
**Spook Cave**

**Location:** 7 miles west of McGregor on US-18 and 2 miles north on gravel road.

Unique guided tours in boats through underground cave in bluffs area. Constant temperature of 47 degrees.



Spook Cave



City of Clinton Showboat Museum

### Eagle Point Nature Center

**Location:** Between US-67 and Mississippi River at northern edge of Clinton

**Hours:** 8-8 daily

The center is open for hiking and nature study year-round. From May-September, there are animal exhibits. The center includes several nature trails and a one-room school that overlooks a native grass prairie and a panoramic view of the Mississippi River Valley.

### Bickelhaupt Arboretum

**Location:** 340 S. 14th St.

**Hours:** Open year round, sun-up to sun-down. No charge.

Nationally known. There are 782 plants recorded with the American Horticulture Society. (Indoor plant conservatory.)

Depart **Clinton** on US-67 south to:  
**LeClaire**

### Buffalo Bill Museum and Lone Star Riverboat

**Location:** 201 River Drive

**Hours:** 9-5 daily, May 1-November 1

A memorial to Indians, pioneers and steamboat days, this museum pays tribute to a legendary native, Buffalo Bill. The wooden-hulled stern-wheeler dry-docked next door was the last working steamboat in the upper Mississippi.

### Buffalo Bill Cody Homestead

**Location:** 3 miles southwest of McCausland, a city located about 10 miles northwest of LeClaire.

**Hours:** 9-6 daily, May 1-November 1

LeClaire was the birthplace of Cody. As a boy he lived in at least three homes. This homestead was built in 1847 of stone by Bill's father. In addition to the restored home, you'll see a stage-coach, covered wagon and buffalo.



Buffalo Bill Cody Homestead

### Village of East Davenport

**Location:** East 11th St. between Mound St. and Jersey Ridge Rd.

This quaint village appears today much as it did in the 1850's when it was an important logging and steamboat center. Restored buildings have small shops, most of which are open 10-4 daily. It is Iowa's largest historic district and is listed on the National Register of Historic Places.

### Queen of Hearts (River Excursions)

**Location:** Oneida Ave. and 1065 E. River Drive

**Hours:** Daily 2-4 p.m., Nights May 1-Labor Day 6:30 p.m. Labor Day-October 6 p.m. Dinner & Dance Cruises daily

River trips on a 400 passenger, triple deck paddlewheeler. Offers sightseeing, dinner cruises, late night party trips.

### Mississippi River Visitor Center (Lock & Dam No. 15)

**Location:** From I-80 take Brady St. Exit south. Stay on US-61 until you intersect with West 2nd St. Turn left and cross Arsenal Bridge. Turn left onto Arsenal Island, proceed to second drive on left and turn in to center's parking lot.

The Mississippi River Visitor Center is operated by the U.S. Army Corps of Engineers. The public can watch the operation of a lock and dam and learn more about the Mississippi River use as a part of our national water highway system. Facilities include exhibits depicting the history of the Corps and Mississippi River navigation, locking procedures, cargo comparisons and depiction of why flooding on the "Great River" occurs. An observation dock is available for watching the "action" outdoors. A multi-media mini-theatre is also used to view slide shows, puppet shows, skits and other environmental education programs. Park rangers conduct tours.

### Arsenal Island

**Location:** An island in the Mississippi River between Davenport, IA and Rock Island, IL

Rock Island Arsenal, established in 1862, has become one of the largest in the United States. The island itself is approximately three miles long and ¼ mile wide at its widest part. Loved by the Indians, it was held sacred as the home of a great and good white spirit.

The government acquired the island from the Indians by a treaty at St. Louis in 1804. This treaty was never recognized by Chief Black Hawk and eventually led to the Black Hawk War of 1832.

Things to see on the island include: Arsenal Museum, Reservoir complete in 1871, Indian Mound, Union Cemetery Site, Hydro-Electric Plant built in 1917, Confederate Cemetery, National Cemetery, General Rodman's grave, Rock Island Village Site, Navigation Locks of 1906-1907, Confederate Prison City, Hospital, Col. Davenport's House, Bridge Monument, Lock and Dam 15, Clock Tower, Ft. Armstrong, and Ft. Armstrong Cemetery.

### Confederate Cemetery

Originally containing the bodies of 1,961 prisoners who died while confined here during the Civil War. Each Memorial Day, Confederate flags are placed before each headstone, a firing detail fires three volleys, and a bugler sounds taps.

### National Cemetery

This cemetery was established in 1865 as a post cemetery. Today, approximately 11,000 veteran dead of our country's several military services are buried here.

### John M. Browning Memorial Museum

**Location:** Arsenal Island

**Hours:** 11-4 Wednesday-Sunday

The museum, established in July 1905, contains one of the largest military arms collections in the nation. It was rededicated in 1959 as the Browning Memorial Museum.

Weapons that may be seen date from the pre-Revolutionary War period to the present, including many weapons captured from hostile Indians, the enemy in the Civil, Spanish-American, World Wars I and II, and the Boxer Rebellion.

### Putnam Museum

**Location:** 1717 West 12th Street

**Hours:** 9-5 Tuesday-Saturday, 1-5 Sunday

This third oldest museum west of the Mississippi contains historical and art exhibits, as well as a large collection of Indian artifacts. Original Black Hawk treaty on display.

### Davenport Art Gallery

**Location:** West 12th St. and Division

**Hours:** 10-4:30 Tuesday-Saturday, 1-4:30 Sunday

Wander among exhibits that include 19th and early 20th century American paintings, Mexican-Colonial, a Regionalist Gallery (Grant Wood-Iowa, Thomas Hart Benton-Missouri, Joh Steuart Curry-Kansas), and much more.

### Vander Veer Park and Conservatory

**Location:** From I-80 take Brady St. (US-61) Exit south to West Central Park Ave. The park is between Brady St. and Harrison St.

**Hours:** Conservatory 10-4 daily

The flower conservatory hosts four major flower shows and has a year-round display of tropical plants, cactus, small plants, etc. The Rose Park Gardens features 2,500 plants.

Continue on US-67 south through **Davenport** to IA-22 to:

### Muscatine

### Muscatine Art Center, Stanley Gallery and Laura Musser Museum

**Location:** 1314 Mulberry Ave.

**Hours:** 11-5 Tuesday-Friday, 1-5 Saturday and Sunday

Mansions contain art exhibits, pipe organ and other antiques of significance. The museum is surrounded by landscaped grounds, including a formal garden and Japanese tea garden.

### Weed Park

**Location:** East edge of Muscatine

A city park named for the donor. A total of 18 horseshoe-shaped Indian mounds, of which 16 are undisturbed, are located within the park. A zoo is located in the park which extends over wooded hills and bluffs overlooking the Mississippi River and its many islands and bayous.

Depart on US-61 south to IA-92 south to IA-99 to:  
**Toolesboro**

### Toolesboro Indian Mounds and Visitor Center

**Location:** About 20 miles south on county road X-61 (off US-61) through the Great River Bend

**Hours:** 1-5 daily except Tuesday, Memorial Day-Labor Day

Approximately 100 pre-Columbian Woodland and Hopewell Indian mounds are located near the junction of the Iowa and Mississippi Rivers. Visitor center has displays. Toolesboro is the place where, in 1673, Marquette and Joliet became the first white men to set foot on Iowa soil (marker).

Continue on Hwy. 99 to

### Burlington

### Des Moines County Historical Society

Step back into Burlington's past as you enter the doors of the Apple trees, a historical museum in Perkins Park; Hawkeye Log

Cabin with its pioneer furnishings and tools in Crapo Park; the Phelps House, a majestic 1851 mansion at the top of Snake Alley (featured in Ripley's "Believe It or Not" as the crookedest street in the world); the Cellar Shop, a gift shop in the cellar of the Phelps house stocked with collectibles, antiques and souvenirs . . . or the Schneider House, Hawkeye Natives Cabin, Pike Memorial or Black Hawk Springs.  
Guided tours (319) 753-2449

#### Iowa Industries, Inc.

**Location:** Kirkwood St. and Sylvania Dr.

Tours available. No cameras; must be 16 years of age or older. The assembly of spark plugs can be seen. No charge.

Depart **Burlington** on US-61 south to:  
**Fort Madison**

#### Lee County History Center

**Location:** 9th St. and Ave. H

**Hours:** 1-4 Tuesday-Sunday, May-November

The old Santa Fe Railroad station houses exhibits of local history. Visit gift shop for handicrafts, novelties and historic replicas.

#### Sheaffer Eaton

**Location:** 301 Ave. H.

Tours are open to the public Monday-Friday at 1:30 p.m. Must be able to go up stairs and be 12 years of age or older. No cameras; no smoking, no high heeled shoes. Shoes must have heel straps. Manufacturing of writing instruments can be seen. No charge.

US-61 south to:

#### Montrose

#### Nauvoo Ferry

**Location:** Riverview Park, north edge of Montrose on US-61

**Hours:** Daily, April-October

Cross the Mississippi from the historic Montrose Boat Harbor to the foot of Parley street in Nauvoo, Illinois. This mile-wide crossing is where the Mormon Trail began as Brigham Young led his followers westward. Montrose is also the site where the original Fort Des Moines stood in the 1830's.

Depart on US-61 south connecting with US-218 to:  
**Keokuk**

#### Keokuk River Museum

**Location:** Foot of Main St. in Victory Park

**Hours:** Open 9-5 Monday-Sunday, mid-April-November 1

A Mississippi sternwheel towboat, the George M. Verity, is berthed on the riverfront as a local museum. It contains many old-time photographs of riverboats and the river era, as well as other historical items.

#### Mark Twain Center

**Location:** Keokuk Public Library, 5th and Concert

The center has a collection of humorist Mark Twain's (Samuel Clemens) possessions and works.

#### Miller House Museum

**Location:** 3½ blocks northeast of Main on 5th St.

**Hours:** 1-4 Thursday-Sunday and holidays, late May-early October

This restored house, listed on the National Register of Historic Places, was home of Iowa's first U.S. Supreme Court Justice. It features furniture, pictures, rugs, toys, fixtures and clothing of the 19th century.

#### Union Electric Company: Keokuk Hydroelectric Power Plant

**Location:** On Mississippi River at North Water St.

**Hours:** Tours at 10:30, 11:15, 12:45, 1:30, 2:15 and 3, Memorial Day-Labor Day

Enjoy a 45-minute tour of this mile-long dam with 119 spillways. When completed in 1913, it was the largest lowhead hydroelectric power station in the world. You can watch 1,000-foot barges pass through the locks, which are among the longest on the Mississippi.

Depart **Keokuk** on US-218 north to US-2 west to county road W-40 to:

#### Bonaparte

#### Deliverance Canoe Service

**Location:** Corner of 8th and Texas

Offers daily canoe rentals, group trips and shuttle service on a 60-mile stretch of the historic lower Des Moines River.

#### Bonaparte's Retreat

**Hours:** 11-2 and dinner at 5 daily, summer hours

Dine amid the relics and antiques of the riverboat era, in a renovated grist mill.

From **Bonaparte**, take county road J-40 (gravel) to:  
**Bentonsport**

A "lively" ghost town tucked in the valley of the Des Moines River where there were busy mills of many types a century ago. A bustling steamboat town, where close to 1,000 people made their home at the peak of its prosperity. Just across the old iron bridge is Vernon, originally South Bentonsport, known for its clay pottery jugs, crocks and drain tile. In April 1972, both Bentonsport and Vernon were named a National Historic District.



Miller House Museum

Backtrack to **Bonaparte** on county road J-40 south to IA-2 west and take IA-1 north to:  
**Keosauqua**

#### Hotel Manning

**Hours:** Dining room, 6 a.m.-9 p.m. Monday-Saturday, 7 a.m.-2 p.m. Sunday; Sandbar Lounge 4 to midnight weekdays and 4 to 1 a.m. weekends

Want to take a giant leap backwards and experience life as your forefathers saw it in the 1850s? Then check into historic Hotel Manning in Keosauqua. The hotel, built by Edwin Manning, was a stop for steamboats which came up the Des Moines River until the early 1900s. Rooms are restored.

#### Lacey-Keosauqua State Park

**Location:** Across river from Keosauqua

Iowa's largest state park features a series of Indian mounds located near the river, a 30-acre lake, hiking trails along the river and nature trails. Ruins of the woodsmen's cabins may be found by hikers. Ely Ford, in the north side of the park was the river crossing for the Mormon Trail.

Take IA-1 north to IA-16 east to 1st blacktop road north to:

#### Stockport

#### Morris Memorial Park

**Location:** Stockport

**Hours:** During summer; other times by appointment

The memorial log cabin, a replica of the original built by Henry and Jane Morris at this site in 1838, is located in a grove of hardwood trees. The cabin and other buildings house relics of the Midwest-pioneer tools, agricultural equipment and domestic items. A one-room rural schoolhouse, a replica of a water-powered gristmill, a sawmill, and a small lake are also in the park. Facilities for picnicking, hiking, fishing, and camping are available. Nature and bridle trails pass through the most scenic part of the 30-acre park.

Return to IA-16 east to US-218 north to:  
**Mt. Pleasant**

#### Midwest Old Settlers and Threshers Heritage Museum

**Location:** In McMillan Park, 4 blocks south of US-34

**Hours:** 9-5 daily, Memorial Day-Labor Day

Relics used by early pioneers. Farm machinery, steam and gasoline engines, horsedrawn vehicles and a country kitchen. Also in the park is the Museum of Repertoire Americana which exhibits historic material from the days of tent shows and repertoire theater. (Call for appointment (319) 385-9432.)

Leave **Mt. Pleasant** on US-34 east to county road X-30 south to:  
**Geode State Park**

#### Geode State Park

**Location:** 6 miles southeast of New London or 4 miles southwest of Danville

A 1,641-acre heavily wooded area with limestone bluffs, a 205-acre artificial lake, and an old stone quarry along the Skunk River which is one source of geode, Iowa's state rock. The rocks are usually hollow and, when broken open, the cavities are lined with quartz crystals, calcite crystals or other minerals.

#### Selected Events in Southeastern Iowa:

Mid June

Burlington: Steamboat Days

Early July

Clinton: Riverboat Days

Mid July

Keosauqua: Van Buren County Art Festival

Late July

Davenport: Bix Beiderbecke Memorial Jazz Festival

Mid August

Muscatine: Great River Days

Late August

Mount Pleasant: Midwest Old Settlers and Threshers Reunion

Ft. Madison: Tri-State Rodeo

Mid-September

Davenport: Civil War Muster and Mercantile Exposition

Mid-October

Keosauqua: Forest Craft Festival, Lacey-Keosauqua State Park

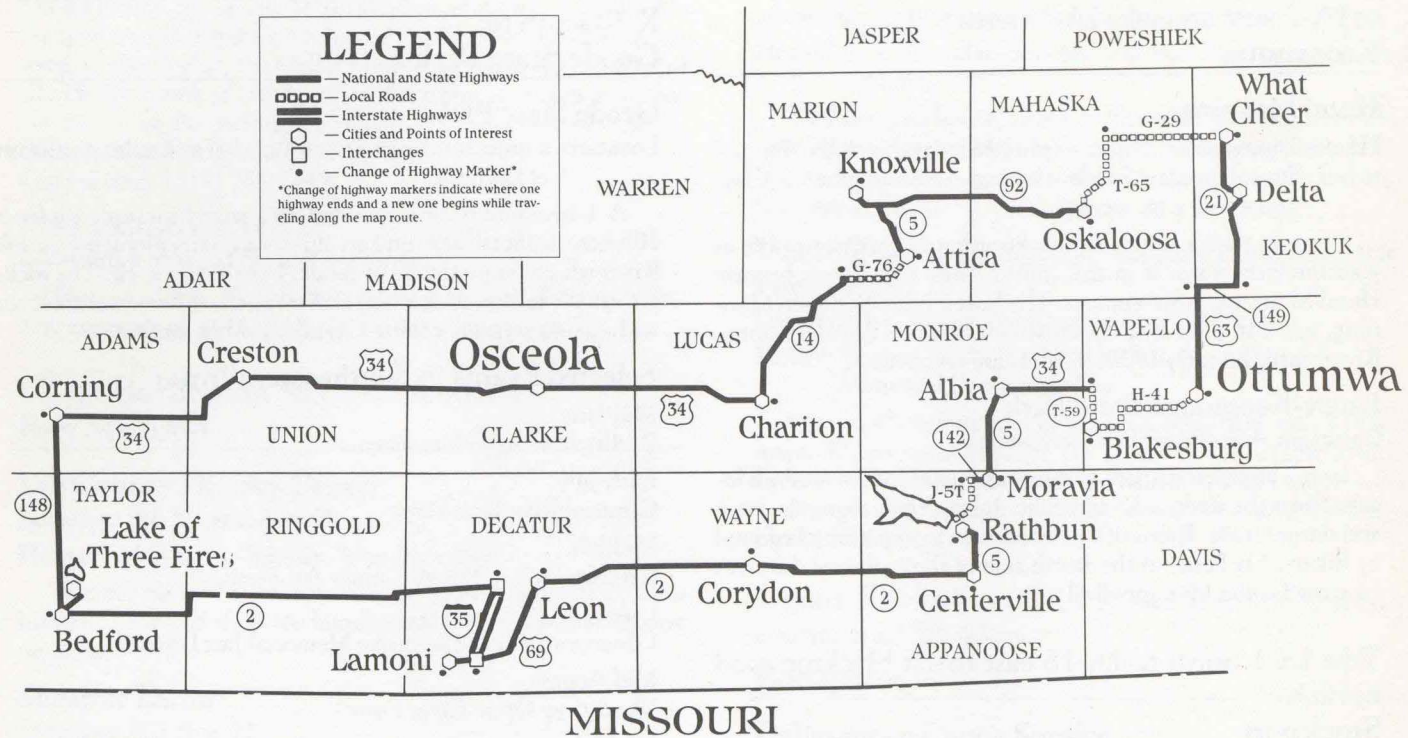
Early December

Davenport: Christmas in the Village



Bix-Beiderbecke Memorial Jazz Festival

# SOUTH CENTRAL



**Total miles: Approximately 393 miles**

## Points of Interest in Ottumwa

### Wapello County Historical Museum

**Location:** 402 Chester Ave.

**Hours:** 2–5 daily, May–October

The museum houses an early 1900 doctor's office, farm implements and a replica of the Ottumwa Coal Palace.

### John Deere Ottumwa Works

**Location:** Vine and Madison

Tours Monday–Friday at 10 a.m. and 1 p.m. Must be 12 years of age. Must wear leather shoes; no sandals or tennis shoes. Manufacturing and assembly of hay and forage equipment will be seen. No charge.

Depart **Ottumwa** on US-63 north to IA-149 east then north on IA-21 to:

## What Cheer

### Brick Museum

**Hours:** (Call for appointment 515-634-2778)

This two-story brick school house, built in 1884, houses artifacts of this once-active mining area and local history.

### Opera House, Inc.

**Hours:** (Call for appointment 515-634-2536)

This beautiful opera house, built in 1893, features a horse-shoe balcony and perfect acoustics. It was named to the National Register of Historic Places in 1973.

Depart G-29 west T-65 south to:  
**Oskaloosa**

### Clow Corporation

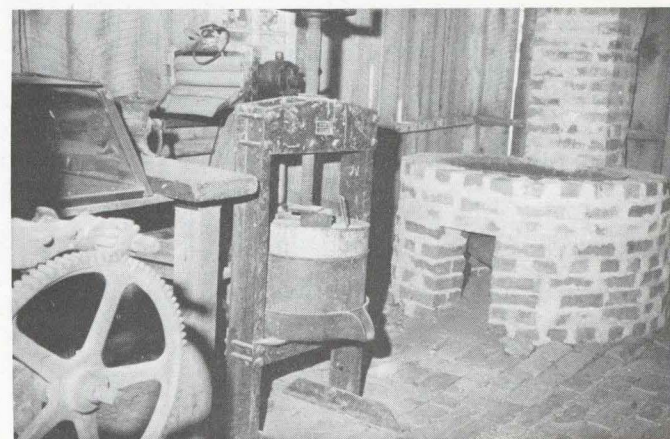
Tours Monday–Friday, 9 a.m.–2:30 p.m. No high heeled shoes, no cameras. The manufacturing of valves and water fire hydrants including the brass and iron foundry, computer center and machine shop can be seen. No charge.

### 1844 Nelson Pioneer Farm and Craft Museum

**Location:** Off US-63 north of Oskaloosa at city limits, then 2 miles east on county road T-65.

**Hours:** 9–5 Tuesday–Saturday, 1–4 Sunday, May 1–October 15

Complete pioneer farm with the added plus of a country store, voting house, country school and a museum building. The Nelson home and barn have been designated National Historic Sites. An annual Pioneer Craft Day Festival is held the third Saturday of each September.



Nelson Pioneer Farm

Depart on county road T-65 south to **Oskaloosa**, take IA-92 west to:  
**Knoxville**

### Marion County Historical Museum

**Location:** Marion County Park, west edge of Knoxville

**Hours:** Saturday and Sunday, 1–6 p.m., May 1–Oct. 1

This museum contains over 15,000 items. A red schoolhouse built in 1874, a rural church, a log cabin, a small railroad depot and a covered bridge are also open to visitors. A small lake, picnic and camping area are also a part of the complex.

Leave **Knoxville** on IA-5 south to county road G-76 to:

## Attica

### Covered Bridge

**Location:** From main street of Attica, pavement west to Indiana Chapel Church. Turn left around cemetery then right for approximately 1 mile.

One of the few covered bridges still left in Iowa, this romantic relic of the past can still be seen in its natural setting. No one seems certain whether covered bridges were built to calm horses, offer protection from the elements, or provide stopping points for couples, but it is certain they are vanishing from the American scene.

Continue on county road G-76 west to IA-14 south to:

## Chariton

### Lucas County Historical Museum

**Location:** West edge of Chariton on Business 34, entrance at 123 17th Street

**Hours:** 1:30–4:30 Wednesday and Sundays, June 1–October 15.

Clothing from the turn-of-the-century, the old Puckerbrush school and Otterbein Church, both restored and moved to the museum area take you back in time. The John L. Lewis Building features memorabilia from the early mining days of Lucas County.



Lucas County Historical Museum

Depart on US-34 west to:  
**Creston**

### Burlington Northern Depot

**Location:** West part of Creston

Railroad depot and museum helps depict Creston's history as a railroading community.

Continue on US-34 West to:  
**Corning**

### Adams County House of History

**Location:** 1000 Benton Ave., one block north of county courthouse

**Hours:** 2–5 Sundays, Mid-June–August.  
Admission charge.

Built in 1877, the House of History served as the county's jail until 1955. Today, it provides a home for an extensive collection of antiques and historical artifacts. A dungeon room, reconstructed barber shop, war uniform display, and extensive archives gallery are all available to visitors.

Leave **Corning** on IA-148 south to:  
**Bedford**

### Lake of Three Fires State Park

**Location:** 2 miles north of Bedford on IA-49 and 2 miles west

According to legend, great Indian council meetings were held within the 642 acres included in the park. When the Indians roamed Iowa's prairies, this was one of the favorite hunting grounds. It is said that the exact location of their council meetings was announced by the smoke of 3 fires built on top of a high hill. The valley that is now the bed of the 125-acre Lake of Three Fires was the gathering place for many a pow-wow, council, or religious festival. The picturesque woodlands are used today by hikers, bird watchers, and photographers, and there are facilities for swimming, fishing, boating, picnicking and camping.

Leave **Bedford** on IA-2 east to I-35 south. Turn off on Exit 4, US-69 south to:

## Lamoni

### Liberty Hall Historic Center

**Location:** West of Main and Linden

**Hours:** 10–3 Monday–Friday, weekends by appointment

This 18-room Victorian farm house was the home of the Joseph Smith family from 1891–1906. Liberty Hall offers each visitor an acquaintanceship with the Smith family and a view of the early Reorganized Latter Day Saint Church.

Depart **Lamoni** on US-69 north to:  
**Leon**

### Decatur County Historical Society

**Location:** 115 North Main Street

**Hours:** 1–5 June–September

**Admission:** \$.50, Children \$.25

Museum contains furniture and dishes used by pioneers, tools, farm implements, guns, paintings, newspapers, dolls and other mementos related to Decatur County. Exhibits include school, church and fireplace settings.

Take IA-2 east to:  
**Corydon**

**Wayne County Historical Museum**

Location: IA-2 in Corydon  
Hours: 1-5 Tuesday-Sunday, April 15-October 31.

Stroll down a street lined with replicas of buildings from the past. More than 20,000 artifacts are on display, including an exhibit that recreates the setting of a Jesse James bank robbery at Corydon.

Continue on IA-2 east to **Centerville** and then north on IA-5 to IA-142 to county road J-5T to:  
**Rathbun Lake**

Location: 7 miles northwest of Centerville

Two-mile long Rathbun Dam forms Iowa's largest lake with seven Army Corps of Engineer campgrounds, one state park and marinas. Thousands of acres for camping, picnic and swimming facilities, boating and fishing.

The Rathbun Hatchery has a visitors center complete with aquaria and gallery with a mini-theater.

Depart **Rathbun Lake** on county road J-5T north to IA-142 east to **Moravia**, then take IA-5 north to **Albia**. Leave **Albia** on US-34 east to county road T-59 south to:

**Blakesburg**

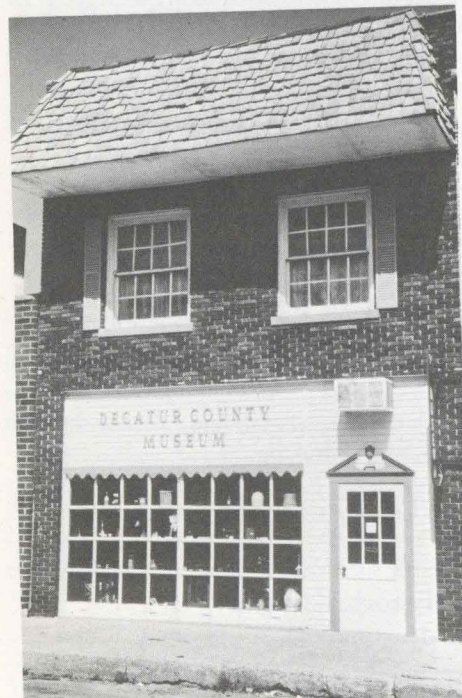
**Antique Airfield and Airpower Museum**

Location: Blakesburg  
Hours: 8-5 weekdays, 9-5 Saturday and 1-5 Sunday.

A living air museum displays bits and pieces of the saga of man's conquest of air and space. Among the items to be seen are 25 aircraft engines, scrap books and artifacts from the early days of aviation. There are 22 airplanes, all of which can still be flown.

**Selected Events in South Central Iowa:**

- Early June
  - Osceola: Folk Arts in the Forest
  - Oskaloosa: Art on the Square
- Early July
  - Creston: Railroad Heritage Days
- Mid August
  - Knoxville: National Sprint Car Championships
- Early September
  - Hopeville: Rural Music Reunion
- Mid September
  - Oskaloosa: Pioneer Crafts Festival
- Late September
  - Centerville: Annual Pancake Day

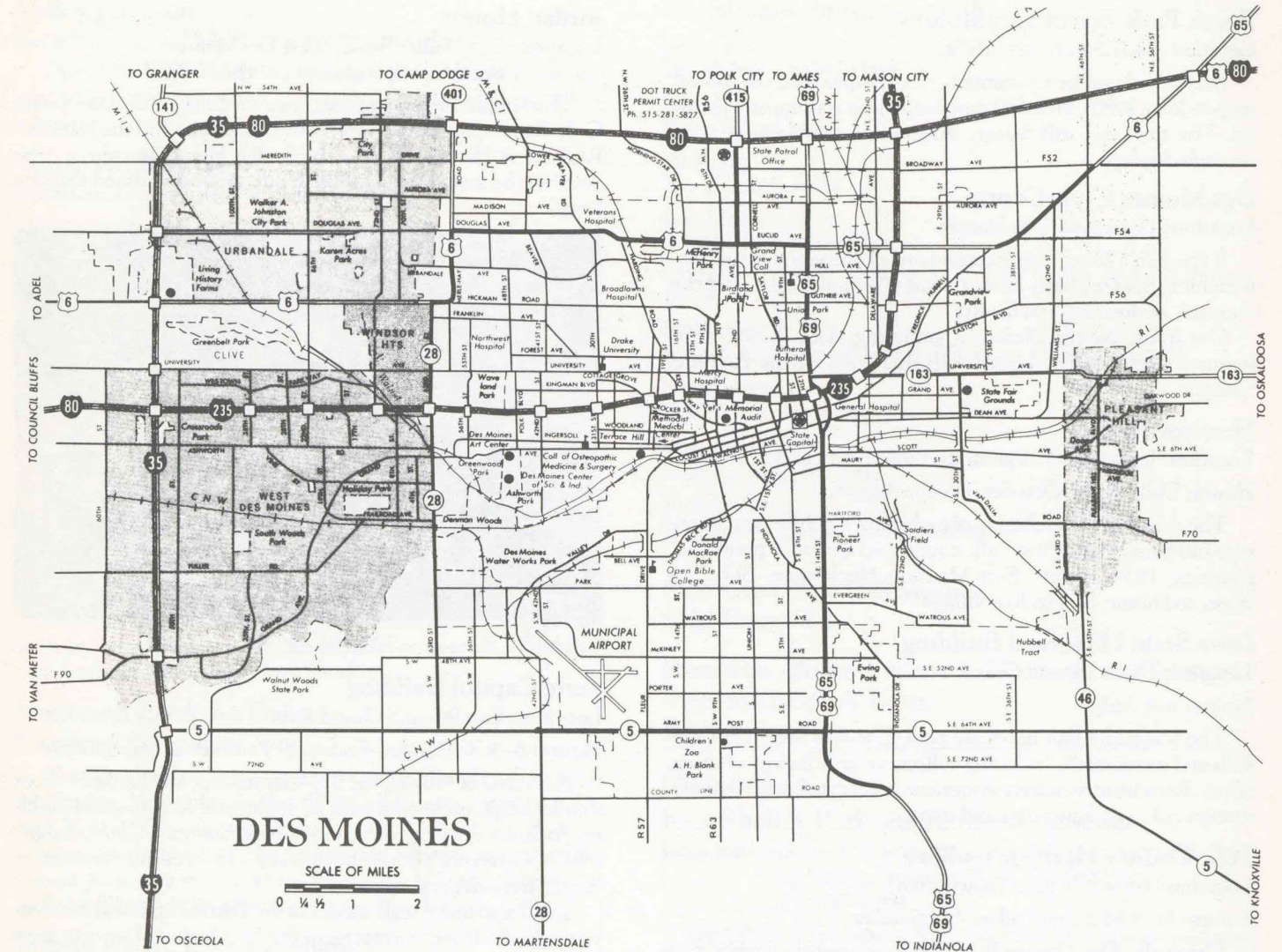


Decatur County Museum



Blakesburg Antique Airfield

**DES MOINES**



**Des Moines**

(Includes Altoona, Clive, Urbandale and West Des Moines)

Location: Intersection of I-35 and I-80

Des Moines is not only Iowa's capital and largest city, it's the state's center for education and industry.

**Adventureland**

Location: Intersection of IA-80 and US-65

Hours: 10-8 weekends, May & September, 10-10 daily, Memorial Day-August 26

For one price, enjoy over 90 rides, shows and attractions in six theme areas. You'll enjoy trying your skill at dozens of games, visiting the shops and a variety of restaurants. Campground and hotel adjacent to the park.

**Des Moines Art Center**

Location: 48th St. and Grand Ave.

Hours: 11-5 Tuesday-Saturday, 12-5 Sunday, 2-4 holidays

The center is home for a collection of American and European paintings and sculpture (19th and 20th century works), contemporary collections and a permanent collection including works by Goya, Monet, Bellow, Francis Bacon, John Singer Sar-

gent and Dubuffet. An enchanting courtyard with reflecting pool, you'll find Carl Milles' fountain-statue, Pegasus and Bellerophon.

**Des Moines Botanical Center**

Location: East bank of the Des Moines River between I-235 and University Ave.

Hours: 10-6 Monday-Thursday, 10-9 Friday, 10-5 Sunday; closed Thanksgiving, Christmas, and New Years.

Walk amid lush tropical plants in this striking 75-foot dome on the banks of the Des Moines River. A collection of approximately 1,000 tropical and sub-tropical plants are housed here permanently. In addition, six major floral shows are held each year.

**Des Moines Center of Science and Industry**

Location: Greenwood/Ashworth Park at 45th and Grand Ave.

Hours: 10-5 Monday-Saturday, 1-5 Sunday; closed Thanksgiving, Christmas, and New Years.

An informal learning center for people of all ages. Designed to stimulate science learning through "hands-on" exhibits. Features a planetarium show, model railroad, traveling and permanent exhibits, and "live" or electronic demonstrations every half hour.

### Blank Park Zoo of Des Moines

**Location:** 7401 Southwest 9th St.

Recently closed for reconstruction and expansion, the zoo will reopen July, 1985, with 350 new animals in naturalistic exhibits. The new zoo will feature Australian and African walk-through displays.

### Des Moines Civic Center

**Location:** Downtown Des Moines

If you don't have time to attend one of the many varied performances held regularly here, at least take time for a tour of this dramatic performing arts facility.

Out front, Nollen Plaza is a gathering place during warm summer afternoons as visitors dip their toes in the beautiful fountain.

### Heritage Village

**Location:** Iowa State Fairgrounds, Grand Ave. and S.E. 30th

**Hours:** Daily April–October, except August.

The area includes a display of early farm machinery in a century-old barn, exposition hall, country school with period furnishings, 1834 church, Fort Madison blockhouse, old drugstore, sod home, and Indian village.

### Iowa State Historical Building

**Location:** East 12th and Grand

**Hours:** 8–4 daily

The Museum's four floors are packed with a treasure of artifacts and memorabilia including collections and displays of china, silver, Iowa history, native American artifacts, fossils, wildlife, foreign cultures, guns, toys and more.

### Polk County Heritage Gallery

**Location:** 1st and Walnut (downtown)

**Hours:** 11–5 Monday–Friday, 1–5 Sunday

Originally Des Moines Post Office, its restored lobby now houses changing art and historical displays. In early 1975, the building was placed on the National Register of Historic Places because of its classic Federal architecture.

### Salisbury House

**Location:** 2 blocks south of Grand Ave. on 42nd St., then ½ block east on Tonawanda Dr.

**Hours:** 8–4:30 Monday–Thursday, 8–12 Friday, June–August

This 42-room Midwestern reconstruction of a country manor was patterned after King's House at Salisbury, England. This American version, complete with authentic appointments from the Tudor age, retains all the flavor of Merry Old England.

### Living History Farms

**Location:** I-35 and I-80 at Hickman Road (Exit 125)

**Hours:** 9–5 Monday–Saturday; 11–6 Sunday, May 1–October

A 600-acre agricultural museum featuring four fully-operating farms; a pioneer farm of 1840, a horse farm of 1900 and a farm of today and tomorrow. The farms also feature Walnut Hill, a typical 1870's community that includes period shops.

This open air museum offers a wide variety of special activities and festivals on most weekends.

### Jordan House

**Location:** 2251 Fuller Road, West Des Moines  
(Call for appointment (515) 277-9723)

This simple 14-room house, once the home of Senator James C. Jordan, is presently under renovation. Listed on the National Register of Historic Places, the Jordan Home was also a "station" in the main branch of the Underground Railroad through Iowa.



State Capitol

### State Capitol Building

**Location:** East 9th and Grand Ave.

**Hours:** 8–4:30 Monday–Friday, 8–4 weekends and holidays

A favorite of visitors, the 275-foot main dome, flanked by four smaller ones, is covered with 22-karat gold leaf. Capitol building includes the Legislative Chambers, Supreme Court, Judge's offices, Governor's office, law library, offices of the Secretary of State, Treasurer and Auditor.

You'll also find a scale model of the Battleship Iowa, a collection of dolls dressed to represent the First Ladies of Iowa in their inaugural gowns.

### Terrace Hill

**Location:** 2300 Grand Ave.

**Hours:** 10–2 Monday–Thursday, 1–5 Sunday, closed legal holidays and during January–February

Terrace Hill is a restored 1869 Victorian mansion in the second empire style. Today, it is the official governor's residence and a historic site.



Living History Farms

### Valley Junction

**Location:** 4th and 5th Streets in West Des Moines

One of the largest and most unique collections of antique and specialty shops in the state. A Farmers Market is held here 8 to noon each Saturday, July through September.

### Water Works Park

**Location:** Locust Street at Fleur Drive

**Hours:** Sunrise to sunset daily

One of the world's finest collections of flowering crabapple trees bloom here in early May. Also included in the 1,500-acre park are an arboretum, greenhouse, river bottom woodlands, fountain, trails and wild flowers.

### Hoyt Sherman Place

**Location:** 15th and Woodland

**Hours:** Monday, Tuesday, Thursday, Friday, 8–4

An historic landmark of Iowa, Des Moines' first art gallery and home of the Des Moines Women's Club. The auditorium features beautiful rococo plastering.

### Ingersoll Dinner Theater

**Location:** 3711 Ingersoll Ave.

Leisurely dining that combines fine food and a complete bar with professionally performed musical or comedy. Performances scheduled Wednesday–Sunday.

### Anderson Erickson Dairy

**Location:** 2229 Hubbell Ave.

Tours available 9 a.m.–4 p.m. Monday, Tuesday, Thursday and Friday, September 1–May 30. (Call for appointment (515) 265-2521.) The silos where milk is kept, the scales that the tankers are weighed on, the pellets that are formed into gallon plastic jugs. See milk cartons filled, the cottage cheese vats and the filling of the cheese cartons. No charge.

### Hiland Potato Chip Company

**Location:** 2300 Delaware Ave.

Tours available on Monday–Thursday, 10 a.m. and 1 p.m. (Call for appointment (515) 262-3175). The processing of potato chips, cheese curls, shoestring potato chips, cheese flavored popped corn will be seen. No charge.

### John Deere Des Moines Works

**Location:** IA-415 North in Ankeny

Tours Monday–Friday. (Call for an appointment (515) 283-3968.) The manufacturing process includes metal fabrication and assembly lines can be seen. Visitors must be 12 or older, must wear hard soled, closed toe shoes. No cameras allowed in shop area. No charge.

### Prairie Farms Dairy

**Location:** 7th and University

Tours Monday, Tuesday, Thursday and Friday, 9 a.m. to 3 p.m. The processing and packaging of dairy products can be seen. No charge.

### Des Moines Area Selected Events:

Late April  
Des Moines Drake Relays  
Early May  
Pella: Tulip Time  
Mid June  
Two Rivers Festival  
Late June  
WDM Kiwanis Jazz Festival  
Late July: Central Hawkeye Old Time Power and Machinery Show  
Early August  
Indianola: National Hot Air Balloon Championships  
Mid August  
Des Moines: Iowa State Fair  
Early September  
Boone: Pufferbilly Days  
Early October  
Winterset: Covered Bridge Festival

### Side Trips from Des Moines

#### Side Tour #1

From Des Moines, take IA-141 north to **Granger**, then north on IA-17 to:

#### Boone

(35 miles)

#### Kate Shelley Park and Railroad Museum

**Location:** Village of Moingona, five miles southwest of Boone.  
Call for appointment (515) 432-5681 or (515) 795-2064

On July 6, 1881, young Kate Shelley heroically crossed raging flood waters to stop an oncoming passenger train and saved those aboard. In this restored depot, you'll find out more about Kate's crossing. In addition, the depot has been furnished with period artifacts. A Rock Island passenger car has been moved to the site and is open for inspection.

#### Mamie Doud Eisenhower Birthplace

**Location:** 709 Carroll St.

**Hours:** 1–5 Tuesday–Sunday, April–December

Visit the quaint, restored birthplace filled with memorabilia of the "Eisenhower years" for a unique story of Mamie's life. The home is a one-story frame house with a summer kitchen and has been completely furnished in the 1890's Victorian period. The bedroom in which Mamie was born contains original furniture and pictures, while the lower level has a museum and library.

#### Kate Shelley High Bridge

**Location:** 3½ miles Northwest of Boone

**Hours:** Year-round

The Kate Shelley High Bridge, the longest and highest double track bridge in the world, is a silent, but awesome tribute to the men who built it more than 80 years ago . . . and to the astounding courage of 15-year-old Kate. On November 17, 1978, the bridge was placed on the National Register of Historic Places.

# AMANA COLONIES, CEDAR RAPIDS, IOWA CITY

## Private Stock Winery

**Location:** 926 Eighth St.

**Hours:** 10-8 Monday-Saturday

See how fine, award-winning wines are made and taste samples of superb Private Stock. A visit to the Private Stock Wine Celler is a memorable and fascinating experience.

## The Livery

**Location:** 906 - 7th St.

**Hours:** 10-5 Monday-Saturday, 'til 9 Thursday

A unique venture in the conversion of a 1900's livery stable into a three-story complex of stores named after the building's original use. The Livery contains an interesting collection of specialty shops and a restaurant amid an atmosphere of stained glass, rustic wood and greenery.

## Boone & Scenic Valley Railroad

**Location:** Intersection of 11th and Division Streets.

**Departure Times:** 11:00 a.m., 1:00 p.m., 3:00 p.m. and 5:00 p.m. Saturdays and Sundays from Memorial Day weekend to October 28. Also 4th of July, Labor Day and Pufferbilly Days. Charter rides by appointment.

Ride across the Scenic Des Moines River Valley. A 10½ mile roundtrip ride in vintage railroad cars beginning at the historic depot on the north side of downtown Boone.

## Side Tour #2

From Des Moines take I-35 south to Exit 56, then west on IA-92 to:

## Winterset

(30 miles)

## Covered Bridge Country

Six original 100-year-old covered bridges are situated within 12 miles of Winterset in Madison County. At that time, because of the number of rivers and creeks running through the county, 16 bridges were ordered covered by the county supervisor for protection against the elements. The 6 remaining are all listed on the National Register of Historic Landmarks. Each year, on the second full weekend in October, a festival is held.

## John Wayne Birthplace

**Location:** 224 South 2nd St.

**Hours:** 9-3:30 weekdays and 11-4 weekends, May-October

Actor John Wayne was born in Winterset on May 26, 1907. He lived here until 1910 when the family moved to Earlham, 13 miles northwest of Winterset. The son of Clyde and Mary Brown Morrison, he was named Marion Michael.

Wayne's father was employed as a pharmacist at the M.E. Smith Drugstore on the south side of the city square.

The kitchen and parlor of the home have been restored to its 1907 appearance. There is also Wayne movie memorabilia to be seen.

## Madison County Historical Museum

**Location:** South of 2nd Ave.

**Hours:** 1-5 Tuesday-Sunday, May 15-October 15

See all types of historical items; toys, glass, clothing, primitives, military, farm items and an excellent exhibit of Indian artifacts.

## Side Tour #3

From Des Moines, take I-80 east to:  
**Newton**

(30 miles)

## Jasper County Historical Museum

**Location:** 1700 S. 15th Ave. West (Exit 164, I-80)

**Hours:** 1-5 daily, May 1-September 30

Jasper County's museum houses many different artifacts of the county displayed in individual room settings, as well as the Maytag Historical Museum. Displays in the Maytag Museum tell the history of laundry appliances.

## Maytag Dairy Farms

**Location:** IA-14 3 miles north follow signs

**Hours:** 8-5 Monday-Friday, 9-1 Saturday

Manufacturer of Maytag Blue Cheese. The Maytag Dairy Farms, welcomes visitors. Ideal time to see cheese being made is 9-11:30 a.m.

## St. Stephen's Episcopal Church

**Location:** 223 East 4th St. North

St. Stephen's has been placed on the National Register of Historic Places as an example of the "Carpenter Gothic" style of architecture. Completed in 1874, the interior design and furnishings remain largely in their original form.

## Side Tour #4

From Des Moines, take IA-163 east to:  
**Pella**

(41 miles)

## Historical Village and Wyatt Earp Boyhood Home

**Location:** 507 Franklin St.

**Hours:** 9-4 Monday-Saturday, April-October

The 11 restored buildings feature a Dutch museum, gristmill, blacksmith shops, pottery, pioneer log cabin and many antique furnishings.

See the boyhood home of Wyatt Earp whose part in taming the Old West has become a legend.

## Scholte House

**Location:** 728 Washington

**Hours:** 9-5 Monday-Saturday  
(Call for appointment (515) 628-4848)

Scholte House is the home of Dominie H.P. Scholte, founder of Pella. It contains old-world furniture, as well as paintings, drawings and more from the Scholte collection.

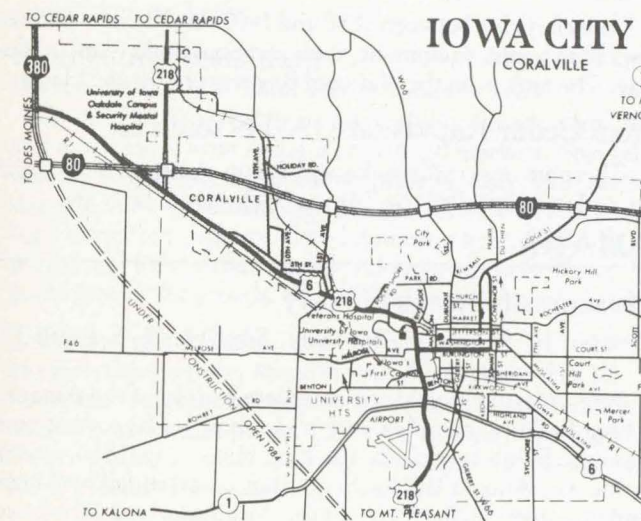
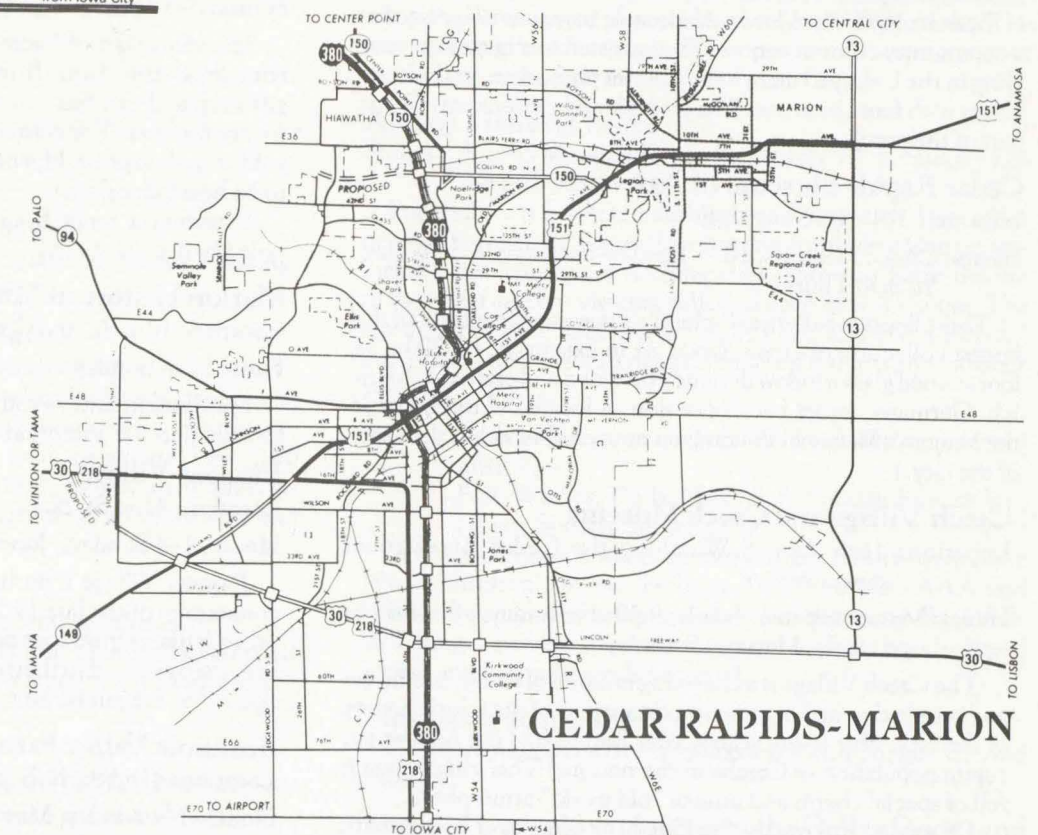
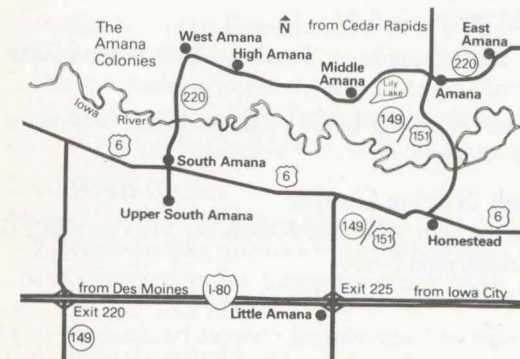
## Strawtown Inn Restaurant

**Location:** On IA-163 at west edge of Pella

**Hours:** 11:30-1:30 daily, 5-10 Tuesday-Thursday and 5-11 weekends.

Dutch dining at its best in this beautifully restored 125-year-old building. Four-course dinners, as well as casual menu, are available. Visit the quaint gift shop next door.

## The Amana Colonies



## Cedar Rapids

**Location:** I-380, US-30 and US-151

Parks and recreational areas abound. The Seminole Valley Park and Farm features a restored 1880 farm, open Sunday afternoons, May through October. Noelridge Park on Collins Road N.E., has a greenhouse complex and four-acre municipal flower garden. Veterans Memorial Stadium and Park on 8th Avenue S.W. is home to a farm team of the Cincinnati Reds. The Bever Park and Zoo, Bever Avenue and Memorial Drive S.E., is home of Old MacDonald's Farm . . . and lions, bears, leopards, etc. Twelve miles southeast of the city, just off US-30, is Palisades-Kepler State Park, located on bluffs overlooking the Cedar River.

## Cedar Valley Nature Trail

**Location:** Hiawatha, Iowa (Located on the northwest edge of Cedar Rapids.) Beginning of trail is signed and there is a parking lot adjacent.

Built on the roadbed of the old Illinois Central Gulf railroad line, this 52-mile long nature trail is 100-feet wide and runs between Hiawatha and Evansdale, Iowa. (Located on the east edge of Waterloo.) The trail follows the route of the Cedar River bottomland along the forested banks of the river. Small cities, county recreation areas and parks are scattered along the trail which is suitable for both hiking and bicycling.

### **Brucemore, Inc.**

**Location:** 2160 Linden Drive S.E.

**Hours:** 9-4 Tuesday-Friday, 10-3 Saturday

Brucemore, a 26-acre estate in Cedar Rapids, is one of the newest properties of the National Trust for Historic Preservation, the only one in Iowa.

Built in 1885, the Queen Anne style mansion is operated as a community cultural center. The mansion has butternut paneling in the L-shaped main hall, a player pipe organ, and 13 fireplaces with four chimneys. The grounds and gardens are a lovely part of the estate.

### **Cedar Rapids Museum of Art**

**Location:** 324 - 3rd Street S.E.

**Hours:** Closed Mondays, 10-5 Tuesday-Saturday, 2-5 Sunday, 'til 8:30 Thursday

Three floors of galleries, including a permanent exhibit of the largest collection of Grant Wood art in existence. (A 20 by 24 foot stained glass window designed by Wood and crafted in Munich, Germany, under his supervision, is located in the lobby of the Veteran's Memorial Building on municipal island in the heart of the city.)

### **Czech Village and Czech Museum**

**Location:** 16th Ave. S.W. along the Cedar River (near downtown)

**Hours:** Museum open 2-4 daily, 9:30-4 Saturday; village shops open daily, Monday-Saturday

The Czech Village is a charming mixture of shops, businesses and people that makes up an important part of the ethnic history of the city. (For many years Cedar Rapids had the highest per capita population of Czechs in the nation.) This village area is full of special charm and unique "old world" atmosphere.

Of special interest is the Czech museum and library with



Czech Village

beautiful authentic antique costumes from Czechoslovakia. The famous Sykora Bakery with its kolaches, village meat markets, a lovely restaurant and more.

### **Farmer's Market**

**Location:** 1350 'A' Street S.W.

**Hours:** Open May-October on Tuesday, Thursday and Saturday from 5 a.m.-12 noon

A public market selling home produce, fruits, vegetables, flowers and handicrafts.

### **Indian Creek Nature Center**

**Location:** 5 miles east of Cedar Rapids off Mt. Vernon Rd. (county road E-48)

**Hours:** 8-5 Tuesday-Saturday, 1-5 Sunday

The center is a 140-acre natural preserve headquartered in a remodeled dairy barn. It includes an auditorium, observatory, gift shop and exhibits interpreting the human and natural history of the area. The center provides a place for deer to browse, wild orchids to grow, bluebirds to nest and the laughter of people to be heard along trails.

Experiences range from sensory awareness of nature to detailed biological studies.

### **Marion Historical Museum**

**Location:** 10th St. and Central Ave.

**Hours:** 2-4 Sunday, May 1-September 30

Step back in time as you tour this lovely home, decorated and furnished in the Victorian era.

### **Pioneer Village**

**Location:** 42nd St. N.E.

**Hours:** 1-4 Sundays, June-September

Pioneer Village is an historical recreation of a typical Iowa community of the late 19th century. Buildings, furnishings and other artifacts from that period are being moved to the 10-acre site, then restored to their original condition. The first buildings opened to the public for tours are the church and school.

### **Seminole Valley Farm, Inc.**

**Location:** 42nd St. N.E. in Seminole Valley Park

**Hours:** 1-4 Sunday, May 1-October 31

Enjoy farm life between 1880 and 1900. You'll find a restored Iowa farm home, equipment, tools and household items on display. The farm is on the National Register of Historic Places.

From Cedar Rapids take IA-149 south to:

There are seven villages located within close proximity which are collectively called the "Amana Colonies." They are:

## **AMANA**

### **Museum of Amana History**

**Hours:** 10-5 Monday-Saturday, Sundays 12-5, April 15-November 15

A fascinating look at the complete history of the Amanas. Three-building complex with slide show on history of community. Exhibits include the Noe House, an 1864-vintage home; the Amana Village Schoolhouse, attended by Amana children from 1870-1955; and the Washhouse and Woodshed, once a service building for the Noe household.

### **Colony Ceramics**

**Open daily.**

A self-employed "Great"-grandmother doing fine, hand painted ceramics.

### **Amana Society Bread and Pastry Shop**

**Hours:** 8-5 Monday-Saturday, Closed Sundays.

Delicious and wholesome Amana breads, rolls, and pastries from the Amana Society Bakery. German specialties are kuchen (coffee cake) and hot pretzels.

### **Der Wein Keller**

**Hours:** Open daily, closed Sundays during winter

Features an assortment of naturally fermented wines produced on the premises. Come see where the wine is "resting" and visit the tasting bar.

### **Antique Tower Haus**

**Hours:** 9:30 to 5.

Antiques, collectibles, dolls, miniatures and precious moments.

### **The Candlestick**

**Hours:** Open daily, April-December

Candle works and sales located in an old Amana building. Handcrafting of candles on weekdays.

### **Heritage Wine & Cheese Haus**

**Hours:** April-November 9-6, December-March 10-5.

Wide variety of fruit and berry wines made only from fresh fruit: grape, rhubarb, cherry, blackberry, wild elderberry, dandelion, red clover, cranberry, pear, peach and beet. 100 varieties of domestic and imported cheeses with samples available. Gift shop features German steins and glassware and a large selection of dolls and toys.

### **Broom and Basket Shop**

**Hours:** April-November 9-6, December-March 10-5

Brooms and baskets made locally plus imported baskets all sizes and shapes. Wooden gift items from Schanz Furniture.

### **Das Eis Haus**

**Hours:** Open 7 days a week

Features very rich ice cream made the old-fashioned way, on the premises. Also serving homemade cones and fudge . . . sandwiches, and gifts.

### **Ronneburg Restaurant**

**Hours:** Daily 11 to 2 and 5 to 8. Sunday 11 to 8.

Since 1950, family style meals featuring sausage, ham, steak and much more from Amana's fine meat markets. Specialties include Sauerbraten and Dumplings, Wiener Schnitzel and spaetzle, homemade soup and dessert. Delightful indoor rooftop beer garden. Imported and domestic beer, cocktails, imported and local wines. Small and large group facilities. Free guide service for groups. Major credit cards accepted.

### **Zum Burghof Cafe**

**Hours:** Open all day Monday-Saturday, Sunday at 10.

European atmosphere, imported and locally produced wine, also soft drinks and juices. Deli type service featuring Hahn Bakery products, salad, sandwiches and specialty foods. Hahn Bakery bread and coffee cakes available.

### **The Annex**

**Hours:** Open all day Monday-Saturday, Sunday at 10. Boutique on main street. Apparel and accessories for everyone. Delightful and unique inventory.

### **Old Wine Cellar Winery and Colony Cheese Haus**

**Hours:** Open daily 9-7

(Est. 1960) Produces and retails six fruit wines plus dandelion and rhubarb. Colony Cheese Haus features 46 varieties of cheese. Homemade sausage, gourmet foods, kitchen items and gifts.

### **The Wickery**

**Hours:** 10 to 5. Sundays 12-5 April-November.

Located in the town watchman's old office, this unique shop offers a wide variety of imported and domestic wickerware. The interesting gift selection features potpourri, soaps, pewter miniatures and much more.

### **Amana General Store**

**Hours:** 8:30-5 Monday-Saturday Pottery 10-5. Sunday 12-5 April-November

Located in a historic building constructed in 1858, this original store is the home of an Amana Appliance Center featuring a free Microwave cooking class. Pottery is hand-thrown in the cellar and the viewing gallery is open May-October. The store offers a wide selection of locally made and imported gifts, groceries, and traveler's needs. Amana Products are featured.

### **Ox Yoke Inn**

**Hours:** Spring-Summer, Daily 8-10, 11-4, Dinners served until 9;

Fall-Winter, Daily 11-2, 5-8, Sunday Brunch 9 to Noon, Sunday dinner 11-8.

Serving German and American entrees family-style since 1940. Children's menu. Holiday-Travel awards, AAA and Mobil approved. Gift shop, museum and Bierstube-Rathskellar Lounge, private rooms, tour guide service, handicapped access, major credit cards honored.

### **Tick Tock Antiques**

Collectibles, primitives, glassware and china. Closed Sundays.

### **The Red Geranium (formerly the Cellar Door) and the Christmas Room**

**Hours:** Open year around 9-5. Also Sundays and evenings in the summer.

Side by side on the main street in Amana. The Red Geranium, located in the cellar of an original Amana home, features selected handmade crafts, a delightful potpourri of high quality gifts, collectibles and country accessories. In The Christmas Room, you'll find a wide variety of imported and locally made ornaments, toys, nativity sets, pyramids, nutcrackers, music boxes and much more.

### **The Paper Place by the Alley**

**Hours:** Monday-Saturday 10-6. Sunday 12-5. Closed winter months.

Entering from the alley, this old washhouse and former woodshed of an Amana home holds a distinctive collection of carefully selected greeting cards, stationery, napkins, wrapping paper, notes, stickers and so forth.



### **Ox Yoke Inn Bakery**

**Hours:** Open daily 7:30-6, Sunday 8-5.

Stone hearth baked breads, rolls, buns, pastries, cookies. Coffeeloft serving sandwiches, beverages, pastries, desserts. Handicapped access, major credit cards honored.

### **Old World Lace Shoppe**

**Hours:** April-November 9-6 daily, Sunday 11-5;  
December-March, 9:30-5 daily, Sunday 12-4

Located directly north of the Amana General Store. Unique linen and lace gift items imported from around the world. Also local handcrafted items.

### **Angel's Alley**

Cozy little shop located in original Amana wash house specializing in locally handcrafted gifts. Also dolls and miniatures.

### **Colony Cone Drive-In**

Sandwiches: Amana ham & bratwurst, hamburgers, tenderloin and fish. Malts, sundaes, cones, splits, and slushes in lots of flavors.

### **Amana Meat Shop and Smoke House**

**Hours:** Daily 8-5 Monday-Saturday.

Old-time butcher shop featuring ham, bacon, and wide variety of sausages and aged cheese, specializing in meat and cheese gift boxes. Free "Shop by Mail" catalog. Visit the century old smoketower and sample taste tempting items.

### **The Grape Vine Winery and Gift Shops**

**Hours:** Open daily 9-6

Next to Amana Meat Shop. A collection of shops located in charming old brick Amana home. Delicious fruit wines are produced here by experienced wine makers. Visit the tasting bar and extensive gift shops featuring local handcrafts, souvenirs, antiques, German imports, toys and Santa's Workshop, where it's Christmas all year long. Plus, Colony Maid, where homemade cookies, candies and ice cream are a sheer delight!

### **Small Stuff Antiques (Keines Zeug)**

Tools, primitives, children's collectibles, misc. If you like country living, you will want to visit this antique shop in an old 1856 Amana home, across the street from the Meat Market.

### **Guest House Motor Inn**

**Hours:** Open year round.

Located in the heart of Main Amana, the refurbished 125 year old sandstone Guest House and new motel offer 38 units furnished with country charm. All units feature air conditioning, free phone and free HBO/cable TV. Within easy walking distance are located 5 major restaurants and over 30 unique shops.

### **Amana Barn Restaurant**

**Hours:** Open daily.

Amana's newest restaurant, located on Main Street. Dine in the warmth of the Barn which specializes in excellent German and American food served family style. Delicious Prime Rib, Iowa pork and beef specialties, BBQ pork ribs, homemade salads and desserts. The Hunter's Wine and Beer Stube offers cocktails and the Gift Shop has a beautiful selection. Banquet and meeting facilities available.

### **Victor's Village Store**

**Hours:** Open daily year round.

Gifts, locally made crafts.

### **Brick Haus Restaurant**

**Hours:** Open 7 days/week 8-8. Summers 7:30-8.

Fine homecooked meals; breakfast, lunch, deluxe sandwiches, huge salad bar, and family style dining. Amana bread and meats. Free tour guide service for groups. Private party/meeting room.

### **The Original Amana Furniture and Clock Shop**

**Hours:** Summer hours June-August, Monday-Friday 9-6;  
Saturday 9-5, Sunday 12-4

Workshop and complete display (next to Woolen Mill), featuring solid walnut, cherry and oak furniture handcrafted by the original guild of Amana cabinetmakers. Complete line of Grandfather and Grandmother clocks and all types of wall and mantle clocks. Large selection of accessories. View workshop area from visitors gallery from 9-3 Monday-Friday. Display rooms open Monday-Saturday 9-5.

### **Colony Candy Shop**

**Hours:** Open daily 10-4

Large selection of fine candies and homemade ice cream, donuts and fudge.

### **Wool Room**

**Hours:** Monday-Saturday 10-5, Sunday 12-5.

Yarn knitting supplies, loom, spinning wheels, accessories, fiber books, handcrafted fabrics, and fleece.

### **The Schnitzelbank**

**Hours:** Open daily.

Main street Amana. Featuring a large selection of fine gifts and toys. A browser's delight.

### **The Kitchen Sink**

**Hours:** Open daily.

Located in a historic building. Large variety of quality cookware and unique gift items. Many gourmet kitchenware products. Also selected items produced in the Amana Colonies.

### **Village Winery and Gift Gallery**

**Hours:** Open year-round.

Grape, rhubarb, dandelion, apricot, raspberry, strawberry, cherry, elderberry, cranberry and crabapple wines. Large assortment of gifts: Christmas items, Goebel, Anri, Rockwell and more.

### **Woolen Mill Salesroom**

**Hours:** Open daily 8-5. Sunday 12-5. Special summer and fall hours June-October 8-6.

Featuring a wide selection of yard goods, mill ends, blankets, lounge robes, wool pelts, sweaters, jackets and coats for men, women and children. Also a complete line of ties, caps, mittens, gloves and scarves. Manufacturing plant guided tours provided Monday through Friday.

### **Millstream Brewing Co.**

Open Spring of 1985.

Amana's only brewery. Located behind the Colony Inn restaurant across from the Woolen Mill.

### **Sandstone Winery**

**Hours:** 9-8 Monday thru Saturday, 12-5 Sunday.

Naturally fermented wines and selected gifts.

### **Colony Inn**

**Hours:** Open daily 7:30-8:30, Sunday 11-8.

Featuring famous Amana food served family style complete with dessert. Amana bread and meats. Gifts. Amana products. Rooms for private parties. Free tour guide service for groups. Overnight accommodations for self-contained motor homes and travel trailers. Serving breakfast, lunch, snacks and beverage, dinners. Imported domestic beer and wine.

### **Homestead**

Located 3 miles south of Amana on U.S. #6.

### **Colony Village Restaurant and Rathskeller Lounge**

**Hours:** Daily 7-8.

Featuring famous Amana food served family style.

### **Ehrle Brothers Winery**

**Hours:** 9-6 daily. Winter hours 10-5:30

Visit the oldest winery in Amana. Free samples of the naturally fermented wines, made and aged on the premises in oak barrels.

### **Alma's Wash House**

Located in original century-old wash house. Direct factory pottery outlet. Also featuring antiques, gifts, crafted in the Amanas. Hand carved shoes.

### **The Homestead Haus Antique and Gift Shop**

**Hours:** Daily 9-5. Sunday 12-4

Across from Amana Home Museum and Blacksmith Shop, featuring handmade country crafts, antiques, gifts, Amana products, toys, collectibles, and much more.

### **Amana Meat Shop and Smoke House**

**Hours:** Daily 8-5. Closed Sundays.

One of the homes of famous Amana meats, featuring ham, bacon and wide variety of sausages, and aged cheese gift boxes. Visit our Old Smoke House Tower.

### **Bill Zuber's Restaurant**

**Hours:** Open daily 11-2, 4:30-8, Sunday 11-8

Former N.Y. Yankee pitcher, Zuber, established this fine restaurant in the former 100-year-old Homestead Hotel. Home-made soup, fresh baked pies, Amana smoked pork chops, ham and sausage, Wienerschnitzel, country style chicken and famous oven baked steak served in the generous Amana family style.

### **Die Heimat County Inn**

**Hours:** Open year round

A restored bed and breakfast inn built in 1858. Lobby and guest rooms furnished with Amana furniture and antiques. All rooms have private baths, TV and air conditioning. Summer rates (which include a continental breakfast) from April 15-November 15. Winter rates, winter weekend specials and senior citizen discounts available.

### **Amana Home and Blacksmith Shop Museum Complex**

**Hours:** Daily 10-5, Sunday 12-5, April-Nov. weather permitting.

Amana "Heim" is a century-old preserved home. Blacksmith Shop has original hearth and working blacksmith. Cast iron gifts and handcrafts. Home admission: Adults - \$1, Children under 10 - 25¢.

### **The Pepper Mill**

**Hours:** Open daily April-December.

Located in a 120-year-old Amana Kitchen with original brick hearth and "wasch kessel." Featuring spices and herbs for cooking and decorations, teas and coffee, Watkins products, a select assortment of collectibles and handmade local crafts.

### **Middle Amana**

Leaving Amana on IA-220 west, you will pass the location where the State National & World Plowing Contests will be held in 1988. You will round the Lily Lake with its rest stops and in late summer, its many blossoming lotus lilies. View the world famous Amana Refrigeration, Inc., once owned by the Amana Society, where home appliances are manufactured.

### **Hahn's Hearth Oven Bakery**

Open Monday-Saturday 7:30, April-October Wednesday & Saturday in March, November and December

Original wood-fired oven (still used) and hearth baked homemade bread and coffeecake.

### **Community Kitchen Museum**

**Hours:** Open daily and Sunday.

Tour the Community Kitchen, Cooper Shop, and Hahn's Hearth Oven Bakery. The atmosphere and workplace of old Amana preserved. Guides available.

### **Krauss Old Style Colony Winery**

**Hours:** 9-6; 12-5 Sunday Guided tours Monday-Saturday 10 and 2.

"The Aristocrat of Wines since 1949." Uses only whole, fresh pick-of-the-crop fruit, berries, vegetables and blossoms to produce homemade, naturally fermented wines.

### **High Amana**

**Location:** IA-220

High Amana offers a beautiful view of the seven-mile canal built to bring water from the Iowa River to the Amana woolen mills and other industries.

### **Old Fashioned General Store and Gift Shop**

**Hours:** Open daily year-round. Sunday 10-5

Shop for Amana handcrafts, souvenirs and quality gifts in a store whose interior has not changed since its establishment over 100 years ago.

### **Amana Arts Guild**

**Hours:** June-September, Saturday & Sunday only, 11-4

Community Arts Center, Gallery/Museum open to public featuring exhibits of Amana folk crafts, Iowa folk arts and special shows by area artists. Free.

### **WEST AMANA**

**Location:** IA-220

This is one of the smaller villages and features interesting barns. Historically, the Amana people lived in the villages and worked on the land, in the woolen mills, the furniture factory and at other crafts.

### **Schanz Furniture Refinishing Gift Outlet**

**Hours:** 9-5 Mon.-Sat.

Home of Iowa's largest solid walnut rocking chair. Chair caning and seatweaving. Wooden items from Schanz Furniture are also available in South Amana.

### Broom and Basket Shop

Hours: 9-5 Mon.-Sat.

Locally made baskets, plus large assortment of imported baskets.

### West Amana Store

Hours: Daily 8:30-6, Mon.-Sat., 12-5 Sun.

A restored historical sandstone structure built in 1863. Antiques, handmade traditional quilts, calicos, quilting supplies, folk and fine art objects by area artists; deli and beer room.

## SOUTH AMANA

**Location:** US-6 and IA-220 intersection — South Amana has beautiful flower gardens tended by the Amana omas (grandmothers).

### The Barn Museum

Hours: 9-5 daily Apr. 1-Oct. 31

Featuring "Amana and Americana in Miniature." "The largest known collection of miniatures created by one man," Henry Moore. Nominal admission fee. Group rates and tours provided.

### Colony Market Place Restaurant & Shops

Hours: Daily 10:30-10. Mon.-Sat.

Down by the Post Office in scenic South Amana. German-American food served family style. German beer, cocktails, local wine, specialty shops, historic town well, home of Colony Kitchen foods, local products, meeting and banquet rooms, group tour facilities. Credit cards accepted.

### Ackerman Winery and Cheese Shop

Hours: 9-6 Mon.-Sat. May-Oct., 9-5 rest of year. Sun. 12-5, summer only.

This winery offers fine wines backed by three generations of experience. All wines are made on the premises and only from fresh fruit. Stop in and sample grape, white grape, rhubarb, cherry, cranberry, wild elderberry, strawberry, dandelion, blueberry, wild mulberry, red clover, blackberry, apple, beet and peach. Gift shop features local handcrafts, German glass and steins and other fine quality gifts. Cheese shop features a wide variety of domestic and imported cheeses.

### Amana General Store — Pottery and Christmas Shop

Hours: Daily 9-5, Dec.-Apr. 10-5. Sundays May-Oct. 12-4

Featuring Amana pottery created on the premises — imported and domestic Christmas ornaments and decorations — Hummel figurines — Amana Products and Gifts.

## UPPER SOUTH AMANA

**Location:** South of South Amana

This village offers the best view of the Amanas; you can see all seven villages in the Iowa River Valley. East on U.S. 6.

### Schanz Furniture and Refinishing Shop

Hours: 8-5 Mon.-Sat.

Workshop and salesroom open for touring. Solid walnut, cherry, oak furniture, plus furniture repaired and refinished. Custom chair caning and seatweaving.

### Brumwell Flour Mill

Hours: 9-5 daily, Fri.-Sat. 9-4

Milling stone ground flours. (Wheat, corn, rye, buckwheat and pancake mixes.)

### Krauss Furniture Shop

Hours: 8-5 Mon.-Sat., Sun. (May-Dec. only) 1-4. Closed holidays.

Handmade furniture, clocks and gift items.

## On to I-80 Via U.S. 6 & IA-151 (New Highway to Open Late Summer 1985)

## LITTLE AMANA

This complex is an encapsulation of the arts and crafts of the Amana Colonies. Buildings are of stone and wood, designed to be reminiscent of materials used by the Amana pioneers. The villages are six miles north of this stop.

### Little Amana Woolen Mill Salesroom

Hours: 8:30-8 daily.

Features fabric, loungers, robes, sportswear and other products of the Amana Woolen Mill.

### Little Amana General Store

Hours: 8:30-8 daily

Features antiques and all the Amana products, as well as gifts, and general merchandise.

### Little Amana Winery

Hours: 9-8 daily, Sun. 10-6

Features piestengel (rhubarb) and grape wine typical of Amana.

### The Seven Village Restaurant

Hours: 6 a.m.-10 p.m.

In the Amana Room you can enjoy dinner served family-style or make choices from the coffee shop. An intimate cocktail lounge is loaded with conversation pieces from early Colony.

### Brat Haus

For the traveler in a hurry, deliciously different fast food, Amana-style.

Depart on I-80 to:

## Iowa City

### University of Iowa

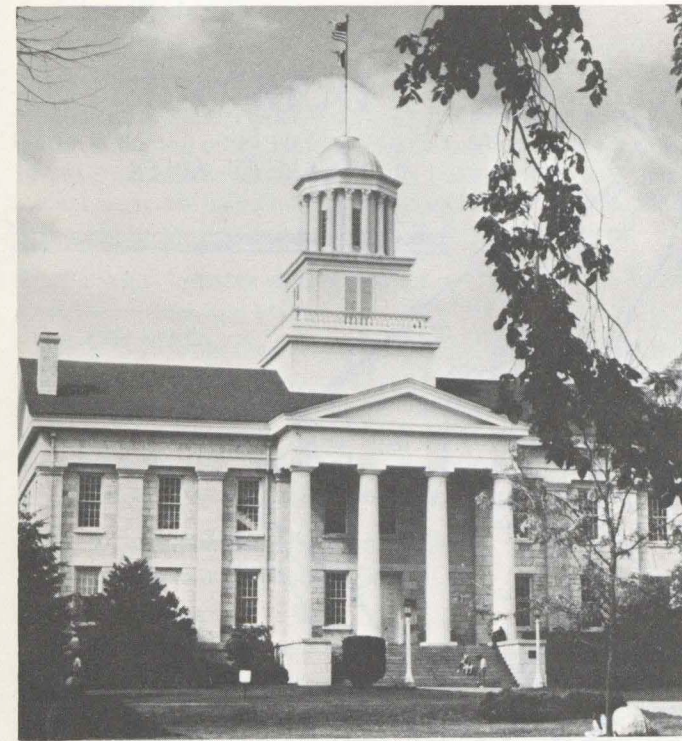
In addition to Old Capitol, the University of Iowa has several historical and cultural attractions. These include: Museum of Art, which displays over 5,000 works of art, including 19th and 20th century American and European painting and sculpture, English silver, Oriental jade and bronzes, African sculpture and more; Museum of Natural History provides appealing, educational insights into the natural world around us (of special interest are 1,000 mounted specimens of North American birds).

### Plum Grove

Location: 1030 Carroll Street at Kirkwood Ave.

Hours: Open 1-5 daily, Wednesday-Sunday, April 16-November 15

This beautifully-restored home of Iowa's first Governor, Robert Lucas, is known as the Mount Vernon of Iowa.



Old Capitol

### Old Capitol

Location: Clinton St. and Iowa Ave. (downtown)

Hours: 10-3 Monday-Saturday, 12-4 Sunday

Restored Old Capitol is a National Historic Landmark. It was the last capitol of the territory from 1842-46 and then became the first state capitol with the admission of Iowa to the Union in 1846.

### Museum of Natural History

Hours: 8 a.m.-4:30 p.m. Monday-Saturday, 12:30-4:30 p.m. Sunday (closed university and national holidays)

### Museum of Art

Hours: 10 a.m.-5 p.m. Tuesday-Saturday, 12-5 p.m. Sundays, Memorial Day, 4th of July, and Labor Day

### Side trip #1

From Iowa City take I-80 east ten miles to exit 254 to:

## West Branch

### Herbert Hoover National Historic Site

Location: I-80, Exit 254

Hours: 8-5 daily

The restored birthplace and home of the first president born west of the Mississippi River is situated in a 197-acre park. A Quaker meeting house, blacksmith shop and school house, as well as the hillside graves of President and Mrs. Hoover, are on the grounds.

### Presidential Library and Museum

Location: On the grounds of the National Historic Site

Hours: Open daily 9-5

This building houses the personal papers and other memorabilia of President Hoover.

### West Branch Heritage Museum

Location: 109 West Main

Hours: Weekdays 9:30-4:30 and Sundays 12-5, summer

An 1884 grocery store today houses museum exhibits including articles brought by the first Quaker pioneers from Ohio and Pennsylvania; additional pioneer artifacts and a room furnished as a pioneer home. Souvenirs and crafts are sold.

### Side Trip #2.

Take IA-1 south out of Iowa City 18 miles to:  
**Kalona**

### Historical Village

Location: IA-22 east edge of Kalona

Hours: 1-4 daily, April 15-October 15

Gathered around the old wooden, two-story depot is a cluster of historical buildings, including the Wahl Museum, one-room school, country store, Mennonite Historical Building (except Sunday), log cabin and Amish House.

### Iowa Mennonite Museum and Archives

Location: IA-22 east edge of Kalona

Hours: 1-4 Monday-Saturday, April 15-October 15

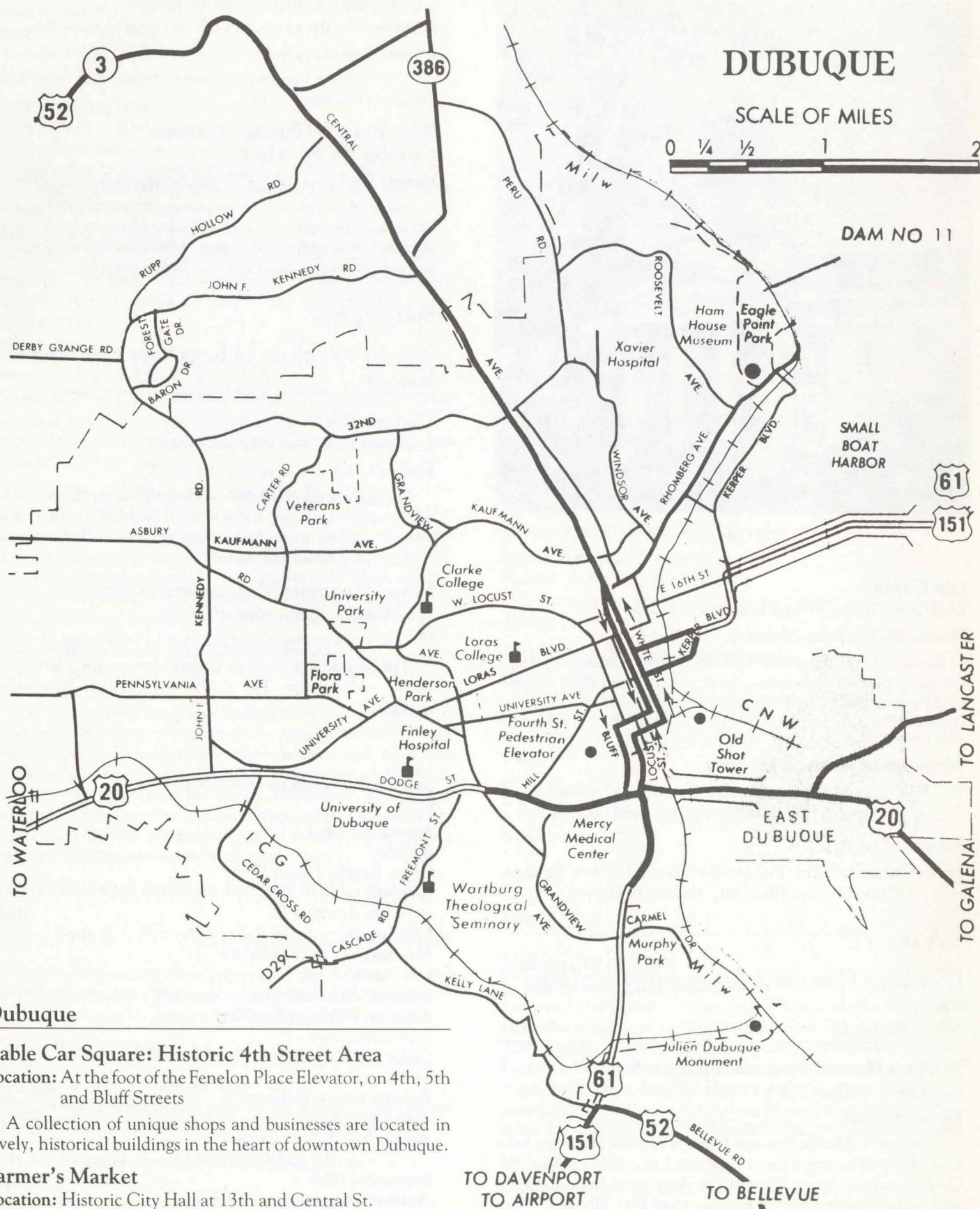
The Mennonite Museum contains community artifacts used by the early settlers. The Archives contain early records and geneology.

### Selected Events in this area:

Early May  
Amanas: Maifest  
MidMay  
Cedar Rapids: Houby Days  
Late June  
Amanas: Amana VIP  
July-August  
Amanas: Lily Lake in bloom  
Mid-August  
Amanas: Arts Festival  
Amanas: Holzfest (Woodfest)  
Early September  
Cedar Rapids: Czech Village Festival  
Mid-September  
Kalona: Kalona Fall Festival  
Early December  
Amanas: Prelude to Christmas

September 1988  
Amanas: International Plowfest

# DUBUQUE



## Dubuque

### Cable Car Square: Historic 4th Street Area

**Location:** At the foot of the Fenelon Place Elevator, on 4th, 5th and Bluff Streets

A collection of unique shops and businesses are located in lovely, historical buildings in the heart of downtown Dubuque.

### Farmer's Market

**Location:** Historic City Hall at 13th and Central St.

**Hours:** Opens 7 a.m. each Saturday

This market has operated for over 130 years. Today some 100 vendors sell fresh farm produce, baked goods and arts and crafts.

### Fenelon Place Elevator

**Location:** Between 4th St. and Fenelon Place (downtown)

**Hours:** 10-8 April 1-November 1

Visitors can ride a block-long cable car from downtown Dubuque to the top of the bluffs for a panoramic view of the city, the river and three states. Originally built in 1882 by a local banker as private transportation between his home on the bluff and his bank on the business district along the Mississippi.

### Five Flags Center and Theater

**Location:** Fourth and Main

This 70-year-old theater was restored to its original gilt and red velvet splendor and reopened as a home for the performing arts. Theater productions, dinner theater, ballet, concerts, sporting events, trade shows and conventions scheduled throughout the year. Stop by for a viewing of the multi-media presentation "The Heritage of Dubuque."

### Gen. Zebulon Pike Lock and Dam

**Location:** North on Rhomberg Ave.

**Hours:** Daily

Visitors may watch boats pass through the lock anytime. A slide presentation and tour are given at 2 p.m. every Sunday, Memorial Day-Labor Day. Show and tour are free. The Dam is visible from Eagle Point Park above. Telescopes and an overlook give a panoramic view of the Mississippi.

### Ham House Museum

**Location:** 2241 Lincoln Ave.

**Hours:** 10-6 daily, May 1-October 31

Thought by some to be haunted, Ham House sits on Eagle Point surrounded by legends of murder, river pirates and whiskey smugglers. This 23-room mansion, built in 1857, has nine rooms decorated in period style with original furnishings and antiques. In addition, seven rooms display early Dubuque history. Visit the country store gift shop, Iowa's oldest log cabin, an 1883 schoolhouse and a 1907 train caboose.

### Ice Harbor Emporium

**Location:** Corner of 2nd and Iowa

**Hours:** Daily

Located at the base of the Ice Harbor (Historic Second Street Harbor), the Emporium contains over 16 specialty shops, many with quality homemade items: unique wooden toys, fabric and porcelain dolls, quilts and children's furniture. An array of artwork includes scenes of Dubuque, rosemailing, oil and watercolor paintings and calligraphy. The Emporium also has pottery, antiques, macrame, custom-made furniture and many, many unique gift ideas.

### Old Jail Art Gallery

**Location:** 720 Central Ave.

**Hours:** 2-5 Thursday-Sunday

The last known example of Egyptian Revival architecture in the U.S., the jail's restored cell block is now a gallery and the dungeon, where Civil War-vintage leg irons were found, is a pottery studio. The exercise yard where law-breakers once strolled is a sculpture court. Built in 1857 the jail is on the National Register of Historic Places.

### Old Shot Tower

**Location:** On 4th St. at river's edge

The tower was used during the Civil War to produce shot from Dubuque's plentiful lead mines. Signs at the site describe procedures used.

### Second Street Harbor

**Location:** Foot of 2nd Street

This million-dollar complex includes the Upper Mississippi Riverboat Museum; the William M. Black, one of the last steam-powered side-wheeler riverboats; a riverside park and the Coast Guard station. The port is designed to enable visitors to learn about the history of the Upper Mississippi.

### "Spirit of Dubuque" & "Mississippi Belle"

**Location:** 2nd St. harbor

**Hours:** 2 and 4 daily late April-October; dinner cruises 6:30 daily May 1-September 2 and 6 p.m. September 6-October 31, reservations required.

These 377-passenger and 799 passenger riverboats are authentic sternwheel propelled by their paddlewheels. Each has a glass-enclosed, air-conditioned lower deck and open upper deck, dining and bar facilities, dance floor, snack bars and restrooms.

### The Redstone

**Location:** Fifth and Bluff

**Hours:** 4 p.m.-2 a.m.

An 1890-vintage Queen Anne style mansion of red brick with Romanesque tower, stained glass windows and ornamental stonework. Once the home of wagon-master August Cooper, whose sturdy Cooper wagons carried settlers across the continent. It's now a popular gathering place for those seeking an elegant spot to enjoy a drink or a game of backgammon or chess.

### The Ryan House

**Location:** 1375 Locust St.

**Hours:** Lunch 11:30-1:30 Monday-Friday, Dinner 6-9 Tuesday-Thursday and 6-10 Friday and Saturday; lounge 5-9:30, Tuesday-Saturday

The most elegant and impressive Italian villa style house located in the city. Built in 1873, it is now a restaurant offering dining in an historic setting. Tour this elegant home from a bygone era, visit Catherine's Parlour gift shop and enjoy a delicious lunch or dinner. Reservations recommended.

### Dubuque Greyhound Park

**Location:** On the Mississippi River at Dubuque's Schmitt Island.

**Hours:** June 1-November 15. Racing nightly, Tuesday through Sat., matinee performances on Wednesday, Saturday and Sunday.

Experience the action and excitement of greyhound racing. Enjoy this totally unique entertainment from the comfort of a trackside dining room, or in the climate-controlled grandstand. For group rates or information call (319) 582-3647, or write Dubuque Greyhound Park, P.O. Box 3190, Dubuque, Iowa 52001. Children under 18 not admitted without parent. Children under 12 admitted to matinees only.

### Grave of Julien Dubuque

**Location:** South of Dubuque, at the end of Rowan Street

A circular Galena limestone tower erected in 1897 on the Mississippi River bluffs, at the mouth of Catfish Creek, contains the grave of Julien Dubuque, the founder of the City of Dubuque, and reportedly the first white man to settle permanently in what is now Iowa. The site is approximately 180 feet above the river.

### John Deere Dubuque Works

**Hours:** Tours are given to general public Monday–Friday at 9 a.m. and 1 p.m. Must be 12 years of age or older.

Welding, machining, painting, assembly, and foundry procedures can be seen. No charge. (Call for appointment, (319) 589-5035.)

### Heritage Bicycling Tour

Map and information: Tourist and Information Center  
Dodge and Locust  
556-4372

Bicycle through Iowa's oldest city. Follow shaded streets past outstanding buildings of the 19th century. Explore a steam-powered Mississippi riverboat. Take your bicycle on a cable car and effortlessly climb 300 foot high bluffs.

### Side trip #1

From Dubuque take US-52 south to:  
**Crystal Lake Cave**

(5 miles)

### Crystal Lake Cave

**Location:** 5 miles south on US-52

**Hours:** 9–6 daily, Memorial Day–Labor Day; 9–5 May, September and October

Discovered by lead miners in 1868, this is one of two caves in the U.S. in which are found the cave flowers called anthodites. Passageways and rooms are lined with stalactites, stalagmites and unusual flowstone formations, as well as a miniature underground lake.

### Side trip #2

From Dubuque take US-20 west to:  
**Dyersville**

(25 miles)

### Basilica of St. Francis Xavier

**Location:** North on IA-136

**Hours:** 8–8 daily

This beautiful, twin-towered church was given the rank of Minor basilica, one of only 18 across the United States. (Basilica is an honor given by the Pope to churches of unusual architectural design, native nobility and antiquity.) Built in 1889.

### Side trip #3

From Dubuque take US-61 south to:  
**Maquoketa**

(31 miles)

### Old Lime Kilns

#### 2-Hurstville Kilns

In the late 1800's Enterprisers recognized the potential of the Maquoketa area with its almost unlimited supply of limestone and timber and set out to develop it.

Chunks of limestone were unloaded into the kiln flue while at the base great fires were fueled by a constant supply of wood. This operation continued around the clock. At no time did the fires stop or the kilns become emptied of rock.

Skeletons of these great kilns can still be admired at Hurstville one mile north of Maquoketa on business U.S. 61.

### Maquoketa Caves State Park

**Location:** 6 miles northeast on IA-428

Numerous caves honeycomb the limestone cliffs in the beautiful park. A natural bridge connects two bluffs about 50 feet above the valley floor and a 17-ton balanced rock is perched atop a cliff. Electric lights are strung through the major caves and pathways are easily followed.

### Costello's Old Mill Gallery

**Location:** mile east on IA-64

**Hours:** 10–6 daily

Formerly Oakland Mill. Built in 1867 as a water-powered turbine supplying power to grind wheat until the turn of the century. The mill was built on a limestone bluff, with stone walls three feet thick. It served as cattle barn for 70 years and was almost added to the list of over 700 mills that have been abandoned and destroyed in Iowa. Restoration started in 1974 and was completed in 1979. On the main floor is a beautiful art gallery and frame shop open year-round.

### Jackson County Historical Museum

**Location:** East Quarry St.

**Hours:** 11–4 Monday–Friday and 1–4 Saturday and Sunday, May–September.

General store and country store replicas. Old fire equipment, log cabin and covered wagon.

### Selected Festivals in Dubuque:

Late May

Dubuque: Dubuque Fest

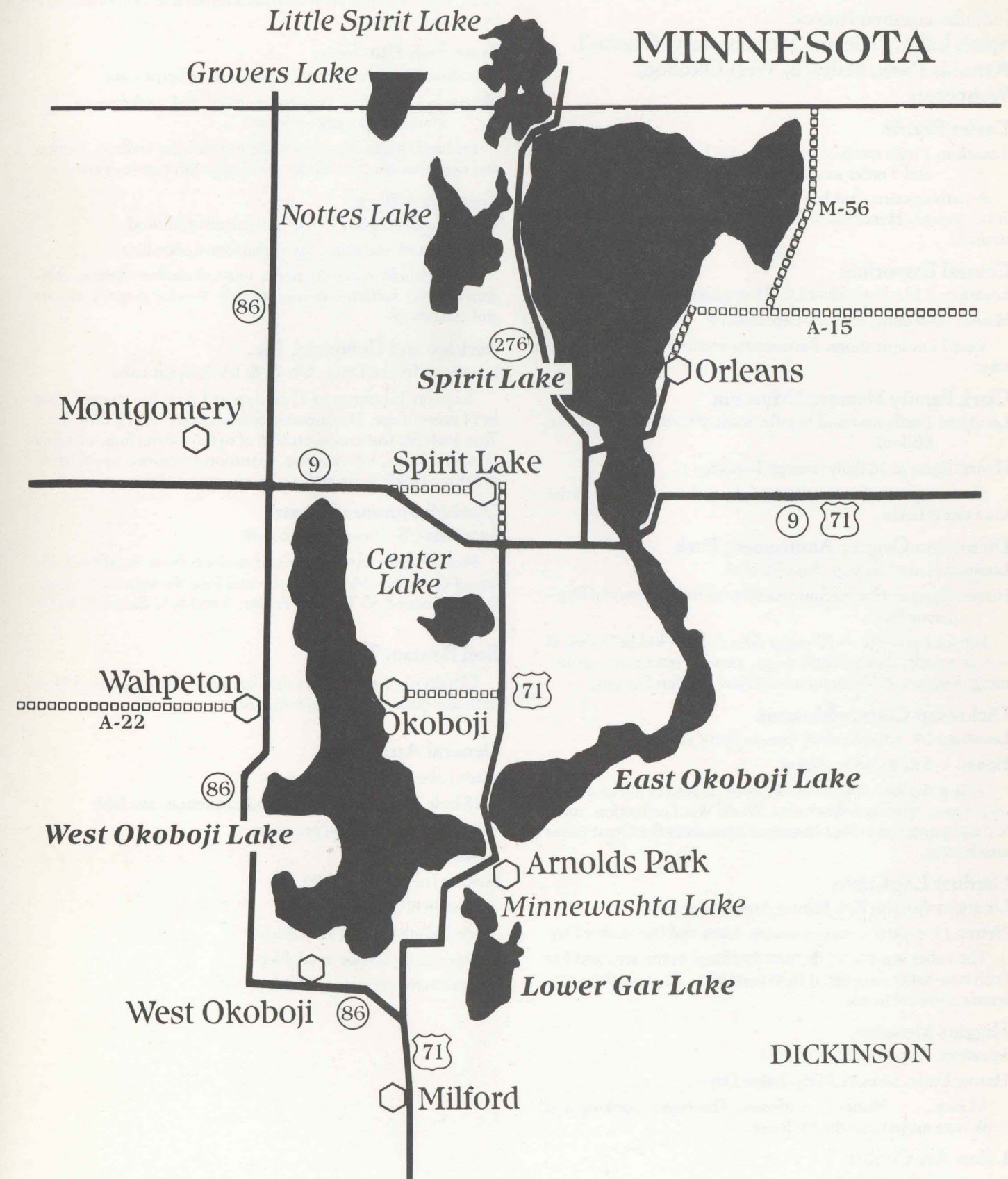
Mid October

Dyersville: Festival of the Arts

Mid November

Dyersville: National Farm Toy Show

# IOWA GREAT LAKES



## Iowa Great Lakes

Includes communities of:

**Spirit Lake, Orleans, Montgomery, Okoboji, Arnolds Park, Milford, West Okoboji, Wahpeton**

### Cayler Prairie

**Location:** 1 mile north of Iowa Lakeside Laboratories on IA-86 and 3 miles west on A-22

A native prairie that has never been touched by farming or development. Hundreds of flowers and plants can be seen and studied.

### Central Emporium

**Location:** 2 blocks north of US-71 stoplight in Arnolds Park

**Hours:** 10–9 daily, May 28–September 6

Visit 23 unique shops. Restaurants and lounges overlooking lake.

### Clark Family Memorial Museum

**Location:** 1 mile west and ½ mile north of Catholic Church in Milford

**Hours:** Open at 10 daily, except Thursday

See four generations of photographs and memorabilia of the Iowa Great Lakes.

### Dickinson County Amusement Park

**Location:** Lake Okoboji, Arnolds Park

**Hours:** Open at 12 weekdays and 10 weekends, Memorial Day–Labor Day

Fun for every age — 20 major rides and 10 “kiddie” rides, as well as novelty and souvenir shops, arcades, restaurants, swimming, lounges, entertainment and Roof Garden Dancing.

### Dickinson County Museum

**Location:** IA-9 and Keokuk Ave. in Spirit Lake

**Hours:** 1–5 daily, June–August

This is the **first** Iowa museum to be housed in a former railroad depot. See Civil War items, World War I collection, medical equipment and other historical items from the Great Lakes area history.

### Gardner Log Cabin

**Location:** Arnolds Park behind Amusement Park

**Hours:** 11–5 daily, except Tuesday, Memorial Day–Labor Day

The cabin was one of the first dwellings in the area and has been restored to its original 1856 condition. There is also a museum on the cabin site.

### Higgins Museum

**Location:** Airport Road, Okoboji

**Hours:** Daily, Memorial Day–Labor Day

Money . . . Money . . . Money. The largest banking and bank note museum in the Midwest.

### Lakes Art Center

**Location:** US-71 Okoboji

**Hours:** 9–4 Monday–Saturday, 1–4 Sunday, June–August

Center features changing schedule of art exhibits and lectures. The Originals Shop features a varied selection of art work by regional artists.

### State Fish Hatchery

**Location:** 1 mile north and ½ mile east of Spirit Lake

**Hours:** 8–4 weekdays, September–April; 8–4 weekdays and 12–5 weekends, June–August

Primarily a hatching and rearing station for walleye, muskie and tiger muskie. Five aquariums display fish native of the area.

### Treasure Village

**Location:** On IA-86, 3 miles northwest of Milford

**Hours:** 9 a.m.–10 p.m., Memorial Day–Labor Day

Enjoy family entertainment, musical mellow drama, children's plays, deerland, miniature golf, Sunday gospel concerts and craft shops.

### Berkley and Company, Inc.

**Location:** Trilene Drive, US-71 & IA-9, Spirit Lake

Tours on Tuesdays and Thursdays at 1 p.m. No charge. Must be 14 years of age. No cameras. Safety glasses will be furnished. Tour includes the manufacturing of nylon fishing line, molding of plastic items, rope making, extrusion processes, assembling of fishing tackle items and packaging operations.

### Okoboji Summer Theatre

**Location:** US-71 north of Okoboji

Professional plays by staff and students from Stephens College of Columbia, Missouri. Open mid-June through mid-August. Performances 8:30 Tuesday–Friday, 5 and 8:30 Saturday and 6 Sunday.

### Boji Bantam Theatre

Children's theater offers matinee plays on weekends. Open from mid-June through mid-August.

### General Attractions

Spirit Lake Massacre Monument

3–18 hole golf courses — club and cart rentals available

4–9 hole golf courses — pro shops

Swimming

Boating (rentals available)

Sailing (rentals available)

Water Skiing (rentals available)

Fishing (guide service available)

Scuba Diving (rentals available)