

OCT 27 61

VACATION FUN IN

# IOWA

PLEASE RETURN TO  
IOWA STATE TRAVELING LIBRARY

STATE CONSERVATION COMMISSION

*PARKLANDS ARE MANAGED TO MINISTER TO THE  
HUMAN MIND AND SPIRIT*



Iowa, the “Beautiful Land,” invites you to explore its pleasures of the outdoors.

Where once the mighty glaciers of the Ice Age deposited their heavy loads and made a melting retreat northward, a rolling plain with beautiful lakes and forests now exists.

Iowa offers much more to relax the body and regenerate the spirit than the vast extent of cultivated land might suggest. Excellent access roads to parks and general ease of travel and accommodations make this state a natural for the park-hopper; a week here, a couple of days there, and on to greener pastures—still in Iowa though, for Iowa has 91 state parks, reserves and lakes expressly maintained for your pleasure and recreation. The land is rich, the people friendly and hospitality unequalled.

Whether you have a month or a day, or if you have come to *stay*, there is something in Iowa to suit your taste and your needs. The area in northeast Iowa, referred to as “Little Switzerland,” stirs the imagination with its hills and valleys, its relaxed living of old world traditions. Fort Atkinson, with its block houses, lends a taste of the old west that will please our TV minded youngsters, as will the Mississippi with its boats and barges, and its many islands as seen at dusk from “Pike’s Peak.” Then too, the Indian Mounds stimulate the imagination.

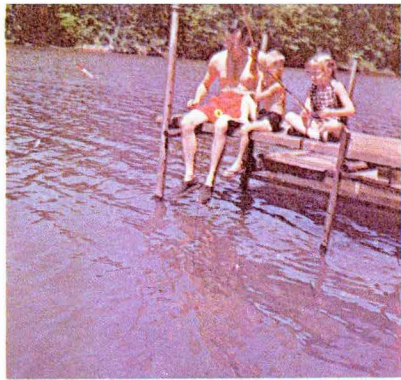
A canoe trip down one of Iowa’s cool, shaded streams brings you next to nature and gives you the rare opportunity of quietly watching beavers at work and raccoons angling for dinner—and you too can pull in a trout to fill that empty spot. With camp established and supper over, you sit on your sand bar haven and watch Mother Nature at her



The accessibility of Iowa lakes to paved, black-topped or gravel highways makes the unloading of trailer or car-carried boats a real pleasure. All Iowa parks and lakes have all-weather roads. Iowa Navigation Laws and Related Statutes are available on request from the State Conservation Commission in Des Moines.



**Lake Okoboji**



**Springbrook State Park**

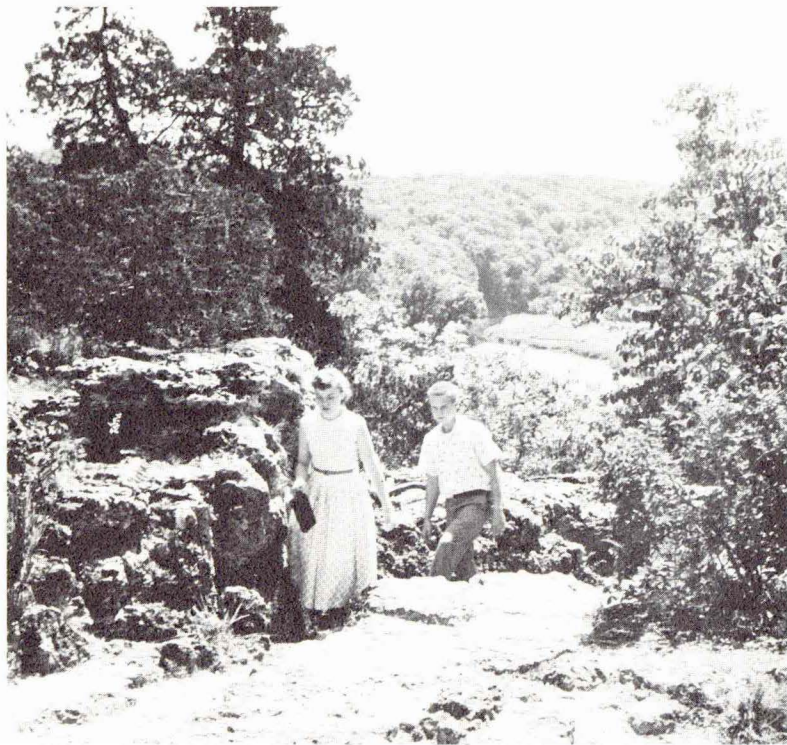
**Lake Ahquabi State Park**



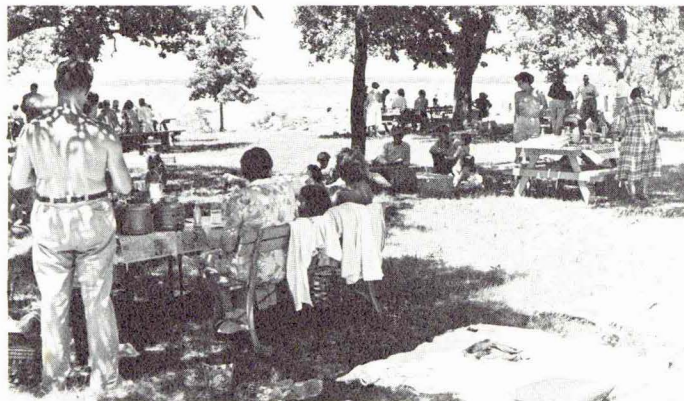
**Clear Lake**

A swim in the lake, no age limit there, and a time to bask in the sunlight on shore. The remainder of the afternoon slips away, each using it according to his own inclinations.

**Backbone State Park**



**Clear Lake State Park**



Supper seems to mark the end of the day and the beginning of the evening. And evening brings a contentment too seldom enjoyed back where you



Waubonsie State Park

In the far western part of the state you'll find Waubonsie Park with its many trails for hiking and excellent camping grounds where the Indians once headquartered. Waubonsie has much of historical value to recommend it too.



IOWA HAS RIGHTLY BEEN CALLED THE  
HOME OF INLAND SAILORS.

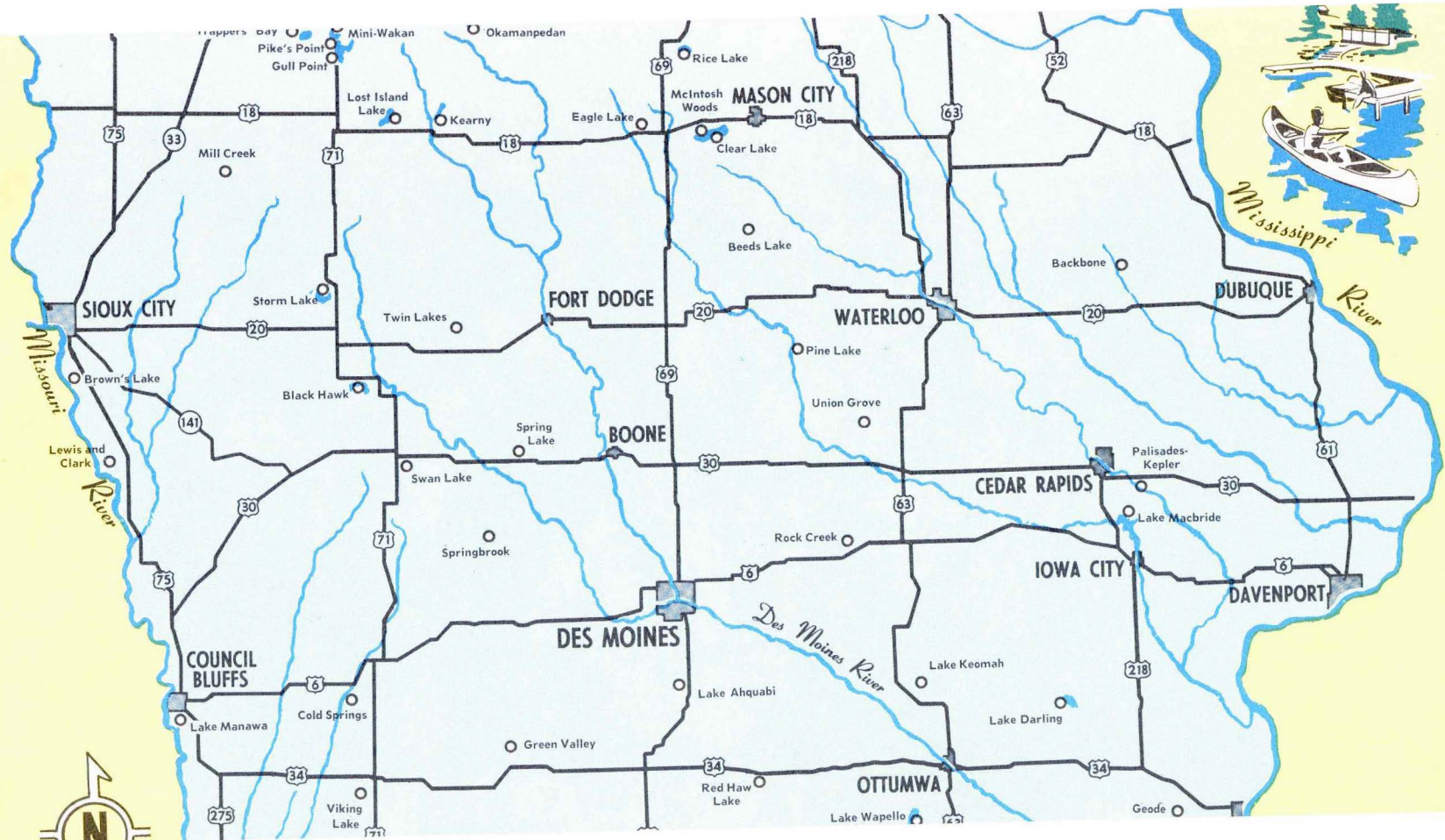


Iowa's "Great Lake" country is well known for its resorts and places of amusement, but did you know that here are facilities available for the camper and park-hopper as well? For instance Gull Point and Pike's Point on Okoboji Lake have everything you could wish for, including scenery, the like of which you will not find anywhere else in the country.

**Okoboji**







Pine Lake



Gull Point State Park

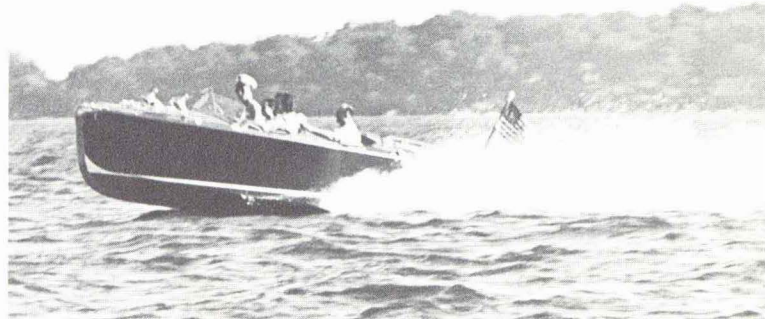
The blue, blue waters of Okoboji with its many-colored boats, boaters and bathers; white sails and water skiers and their towing boats leaving white wakes offers the best of photographic subjects.

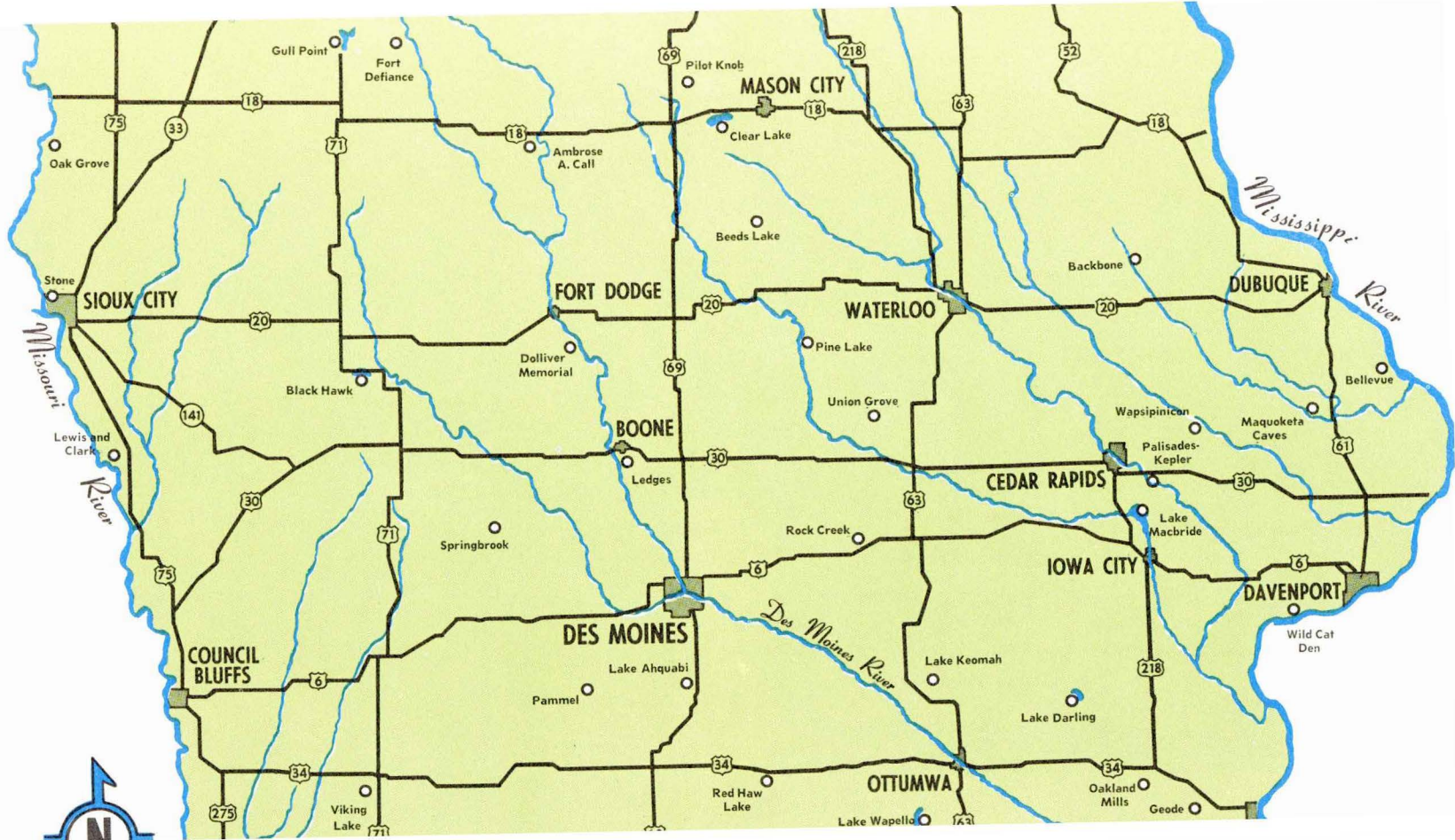
Clear Lake is a mecca for water sports — motorboating, water skiing, sailboating, swimming, and fishing. It is one of Iowa's largest natural lakes and ranks high as a vacation home away from home.



Clear Lake

Clear Lake





Dinner in the open air, cool under the shade of the trees, an appetite sharpened by the out-of-doors. Relaxing in the folding chair, somehow the cares of last week are fading away and those in the future seem unimportant.

### A DAY IN A STATE PARK

The first faint stirrings of the birds, a little less darkness, then a rose pink in the eastern sky. The silent campground dotted with cars, trailers, and tents.

Smoke rising into the sky, sleepy eyed figures throwing back the tent flaps, a hot cup of coffee on the table, the aroma of bacon and eggs. The thrilling touch of cold clear water to bannish the last traces of the night.

Putting the campsite in order, a leisurely conversation with new and friendly neighbors from across the nation or across the state. Watching the preparations for departure of those who are moving on.

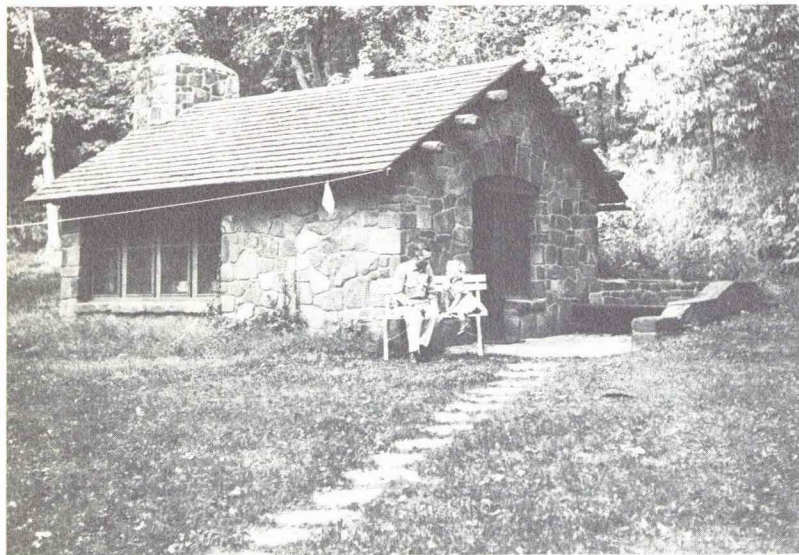
Another cup of coffee, roving through the pages of the book you never had time to read at home.

Watching the arrival of new neighbors, new conversations about a different sort of tent, car or trailer, perhaps even the start of a new friendship.

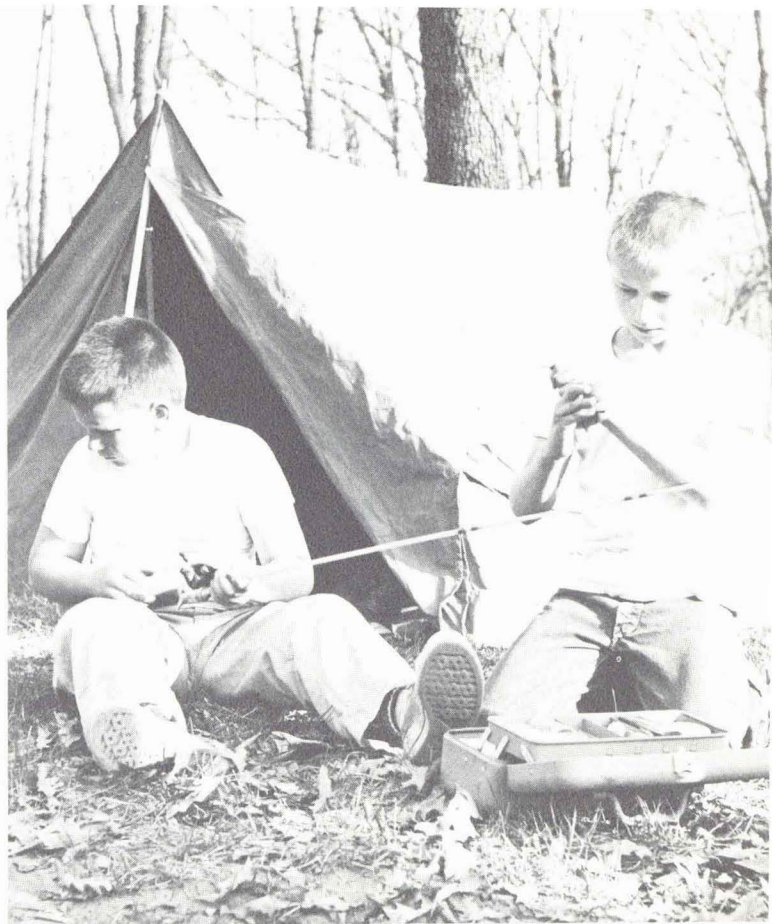
Darkness in the valleys, darkness on the hills. Silence in the woods, silence on the campgrounds. The stars and a cool breeze take over while the sleepy camper fastens the tent flaps and prepares to sink into



Pine Lake State Park



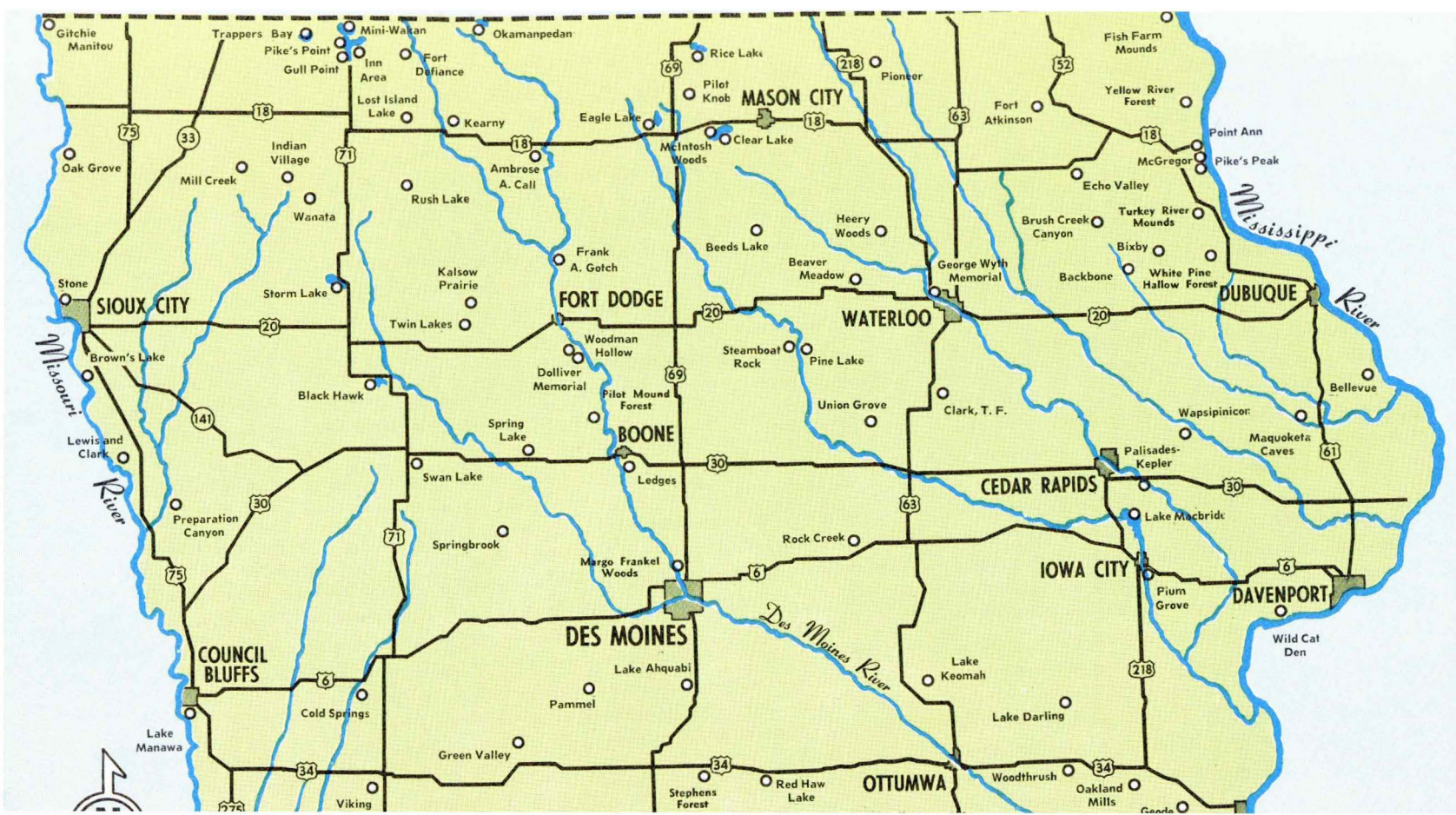
Springbrook State Park



Name of Area	Nearest Town to Entrance	Facilities Available	Name of Area	Nearest Town to Entrance	Facilities Available
<b>Ahquabi, Lake</b>	Iowa 349, 5½ mi. SW. Indianola	Resident custodian. Cabins. Camping, two weeks. Group camping. Swimming, supervised beach. Boating. Fishing, panfish and game fish. Lodge. Shelter. Refreshments available. Picnicking. Trails.	<b>Clark, T. F.</b>	U.S. 63, 4 mi. NE. Traer	Shelter. Picnicking.
<b>Allerton Reservoir</b>	1 mi W. of Allerton on county road	Fishing. Boating. Picnicking. Swimming.	<b>Clear Lake</b>	Iowa 106, 2 mi. S. Clear Lake	Resident custodian. Camping, two weeks. Boating. Fishing, panfish and game fish. Swimming. Lodge. Picnicking.
<b>Ambrose A. Call</b>	Adjoins Algona	Resident custodian. Camping, two weeks. Lodge. Picnicking.	<b>Cold Springs</b>	U.S. 6, Iowa 92, 2 mi. S. Lewis	Picnicking. Swimming. Fishing. Boating.
<b>Backbone</b>	Iowa 19, 4 mi. SW. Strawberry Point	Resident custodian. Cabins. Camping, two weeks. Swimming, supervised beach. Boating. Fishing, panfish and game fish. Shelter. Refreshments available. Picnicking. Trails. Hiking. Motoring. Scenic.	<b>Darling, Lake</b>	3 mi. W. of Brighton on Iowa 78	Resident custodian. Picnicking. Swimming. Boating. Fishing. Camping, two weeks. Refreshments.
<b>Barkley</b>	County road, 2 mi. NE. Fraser	Inaccessible.	<b>Dolliver Memorial</b>	Iowa 50 and 121, 4 mi. N. Lehigh	Resident custodian. Cabins. Camping, two weeks. Group camping. Fishing, panfish and game fish. Lodge, Shelter. Picnicking. Trails.
<b>Beaver Meadow Beeds Lake</b>	Iowa 14, ½ mi. N. Parkersburg 3 mi. NW. Hampton	Fishing, panfish. Shelter. Picnicking.	<b>Eagle Lake</b>	County road, 4 mi. NE. Britt	Boating. Fishing, game fish. Shelter. Picnicking.
<b>Bellevue</b>	U.S. 52, S. of Bellevue	Resident custodian. Camping, overnight only. Golf fee. Lodge. Picnicking. Trails. Historic. Scenic.	<b>Echo Valley</b>	Iowa 56, 3 mi. SE. West Union	Shelter. Picnicking. Hiking.
<b>Bixby</b>	County road, 2 mi. N. Edgewood	Shelter. Picnicking. Trails. Hiking. Historic interest.	<b>Fish Farm Mounds Fort Atkinson</b>	Iowa 182, 7 mi. N. Lansing Iowa 24, NE. edge Fort Atkinson	Historic interest.
<b>Black Hawk</b>	In town of Lake View	Resident custodian. Camping, two weeks. Swimming, supervised beach. Boating. Fishing, panfish and game fish. Shelter. Picnicking. Hiking. Motoring.	<b>Fort Defiance</b>	Iowa 9 and 245, 1 mi. SW. Estherville	Resident custodian. Camping, two weeks. Lodge. Picnicking. Trails. Hiking. Historic interest.
			<b>Galland School</b>	County road, 3 mi. S. Montrose	Historic interest.
			<b>Gardner Sharp Cabin Geode</b>	In Arnolds Park 4 mi. SW. Danville on County Road	Historic interest. Ground only. Cabin not open to public. Resident custodian. Shelter. Picnicking. Hiking. Boating. Fishing. Camping, two weeks. Refreshments available.

Name of Area	Entrance	Facilities Available	Name of Area	Entrance	Facilities Available
<b>Gotch, Frank A.</b>	Larchwood Forks of Des Moines River, 2 mi. SE. of Humboldt	Fishing access, panfish and game fish. Picnicking.	<b>Lewis and Clark</b>	Iowa 165, 2 mi. W. Onawa	Resident custodian. Boating. Camp- ing, two weeks. Fishing, panfish and game fish. Lodge. Shelter. Picnicking. Trails. Historic. Swimming, supervised beach.
<b>Green Valley</b>	2½ mi. NW. Creston on county road	Picnicking. Boating. Fishing. Refresh- ments available.	<b>Lost Island Lake</b>	County road, 2½ mi. NE. Ruthven	Boating. Fishing, panfish and game fish. Shelter. Picnicking.
<b>Gull Point</b>	West side of Lake Okoboji	Resident custodian. Camping, over- night only. Swimming, beach. Boating. Fishing, panfish and game fish. Lodge. Shelter. Refreshments available. Pic- nicking.	<b>Macbride, Lake</b>	Iowa 382, 2½ mi. W. Solon	Resident custodian. Swimming, super- vised beach. Boating. Fishing, panfish. Shelter. Refreshments available. Pic- nicking. Trails, Hiking. Camping, two weeks.
<b>Heery Woods</b>	Iowa 188, ½ mi. S. Clarksville	Fishing, panfish and game fish. Lodge. Picnicking. Hiking.	<b>Manawa, Lake</b>	Iowa 192, 1 mi. S. Council Bluffs	Resident custodian. Boating. Swim- ming, supervised beach. Fishing. Golf, green fee. Refreshments available. Pic- nicking. Hiking.
<b>Indian Village</b>	County road, 4 mi. SE. Suther- land	Historic interest. Inaccessible.	<b>Maquoketa Caves</b>	Iowa 130, 7 mi. NW. Maquo- keta	Resident custodian. Camping, over- night only. Shelter. Picnicking. Trails. Hiking. Scenic.
<b>Inn Area</b>	East Shore West Okoboji	Public access to lake.	<b>Margo Frankel Woods</b>	2 mi. N. of Des Moines, Hwy. 60	Picnicking. Hiking.
<b>Kalsow Prairie</b>	County road, 2 mi. N. Manson	Biologic monument.	<b>McGregor Heights</b>	Adjoins Mc- Gregor	Hiking. Scenic view.
<b>Kearny</b>	Adjoins Em- metsburg	Resident custodian. Boating. Fishing, panfish and game fish. Golf, green fee. Picnicking. Historic.	<b>McIntosh Woods</b>	U.S. 18, ¾ mi. E. Ventura	Boating. Fishing, panfish and game fish. Picnicking.
<b>Keomah, Lake</b>	Iowa 271, 6 mi. SE. Oskaloosa	Resident custodian. Camping, two weeks. Group camping. Boating. Fish- ing, panfish and game fish. Lodge. Shelter. Refreshments available. Pic- nicking. Trails. Hiking. Swimming.	<b>Mill Creek</b>	Iowa 10, 1 mi. E. Paullina	Swimming, supervised beach. Boating. Fishing, panfish and game fish. Golf, green fee. Lodge. Refreshments avail- able. Picnicking.
<b>Lacey- Keosauqua</b>	Iowa 1, adjoins Keosauqua	Resident custodian. Cabins. Camping, two weeks. Swimming, supervised beach. Boating. Fishing, panfish. Golf, green fee. Lodge. Shelter. Refresh- ments available. Picnicking. Trails. Hiking. Motoring. Historic interest.	<b>Mini-Wakan</b>	Iowa 276, 6 mi. NE. Orleans	Boating. Fishing, panfish and game fish. Shelter. Picnicking.
			<b>Nine Eagles</b>	County road, 3½ mi. SE. Davis City	Resident custodian. Picnicking. Hiking. Boating. Fishing. Camping, two weeks. Swimming.





Name of Area	Entrance	Facilities Available	Name of Area	Entrance	Facilities Available
<b>Okamanpedan</b>	County road, 3 mi. NE Dolliver	Boating. Fishing, panfish and game fish. Shelter. Picnicking. Historic.	<b>Rock Creek</b>	3½ mi. NE. Kellogg on county road	Resident custodian. Camping, two weeks. Picnicking. Fishing. Boating. Refreshments. Swimming. Picnicking.
<b>Palisades-Kepler</b>	U.S. 30, 3½ mi. W. Mt. Vernon	Resident custodian. Cabins. Camping, two weeks. Boating. Fishing, panfish and game fish. Lodge. Picnicking. Trails. Hiking.	<b>Rush Lake</b>	County road 6 mi. N. Laurens	
<b>Pammel</b>	Iowa 92 & 162 5 mi. SW. Winterset	Resident custodian. Camping, two weeks. Lodge. Shelter. Picnicking. Trails. Hiking. Historic. Scenic.	<b>Sharon Bluffs</b>	Iowa 2, 3½ mi. SE. Centerville	Shelter. Picnicking. Trails. Hiking. Scenic.
<b>Pike's Peak</b>	4 mi. SE. McGregor	Shelter. Refreshments available. Picnicking. Trails. Hiking. Motoring. Historic interest. Scenic.	<b>Springbrook</b>	Iowa 25 & 384, 7 mi. N. Guthrie Center	Resident custodian. Cabins. Camping, two weeks. Group camping. Swimming, supervised beach. Boating. Fishing, panfish and game fish. Shelter. Picnicking. Trails.
<b>Pike's Point</b>	East side of West Okoboji	Swimming, beach. Picnicking. Boating. Shelter. Fishing, panfish and game fish.	<b>Spring Lake</b>	2 mi. W., 4 mi. N. of Grand Jct.	Picnicking. Boating. Swimming. Fishing.
<b>Pilot Knob</b>	4 mi. E., 1 mi. S. of Forest City	Resident custodian. Camping, two weeks. Shelter. Picnicking. Trails. Hiking. Motoring. Historic.	<b>Steamboat Rock Stone</b>	Adjoins town of Steamboat Rock NW. section Sioux City	Fishing, panfish and game fish. Picnicking. Resident custodian. Camping, two weeks. Fishing, panfish. Lodge. Shelter. Picnicking. Trails. Hiking. Motoring. Historic. Scenic.
<b>Pine Lake</b>	Iowa 118, ½ mi. NE. Eldora	Resident custodian. Cabins. Camping, two weeks. Swimming, supervised beach. Boating. Golf, green fee. Lodge. Refreshments available. Picnicking. Trails. Hiking. Fishing, panfish and game fish.	<b>Storm Lake</b>	Adjoins town of Storm Lake	Boating. Bathing. Fishing, panfish and game fish. Picnicking.
<b>Pioneer</b>	County road, 7 mi. SW. Riceville	Lodge. Picnicking.	<b>Swan Lake</b>	County road, 3 mi. SE. Carroll	Boating. Fishing, panfish and game fish. Shelter. Picnicking.
<b>Plum Grove</b>	SE. section of Iowa City	Historic interest. Open to public 1 to 5 P.M. each afternoon except Monday, April 1 to December 1. Scenic view.	<b>Three Fires, Lake of</b>	Iowa 49, 3 mi. NE. Bedford	Resident custodian. Cabins. Swimming, supervised beach. Boating. Fishing, panfish and game fish. Shelter. Refreshments available. Picnicking. Trails. Hiking. Camping, two weeks.
<b>Point Ann</b>	Adjoins McGregor		<b>Trappers Bay</b>	Adjoins town of Lake Park	Boating. Fishing, panfish and game fish. Shelter. Picnicking.
<b>Preparation Canyon</b>	Iowa 372, 5 mi. SW. Moorhead	Picnicking. Hiking. Historic interest.	<b>Turkey River Mounds</b>	U.S. 52, 4 mi. S. Guttenberg	Historic interest. Scenic. Inaccessible.
<b>Red Haw Lake</b>	U.S. 34, 1 mi. E. Chariton	Resident custodian. Boating. Fishing, panfish and game fish. Shelter. Picnicking. Trails. Hiking. Swimming. Camping, two weeks.	<b>Twin Lakes</b>	Iowa 17-124, 4 mi. N. Rockwell City	Swimming. Boating. Fishing, panfish and game fish. Shelter. Picnicking.
			<b>Union Grove</b>	County road 3	Resident custodian. Boating. Fishing.

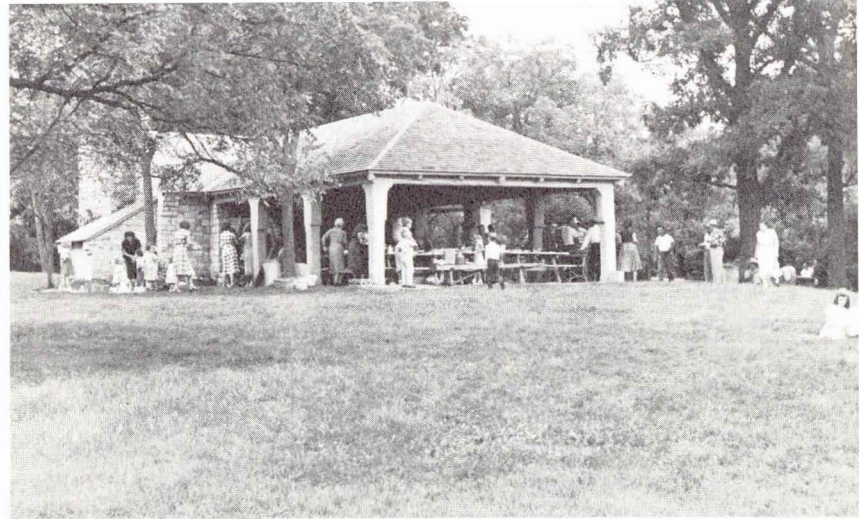
Name of Area	Entrance	Facilities Available
<b>Wanata</b>	Iowa 10, ½ mi. S. Peterson	Shelter. Picnicking. Trails. Hiking.
<b>Wapello, Lake</b>	Iowa 273, 6 mi. W. Drakesville	Resident custodian. Cabins. Camping, two weeks. Swimming, supervised beach. Boating. Fishing, panfish and game fish. Lodge, serving meals. Shelter. Refreshments available. Picnicking. Trails. Hiking.
<b>Wapsipinicon</b>	U.S. 151, ad-joins Anamosa	Resident custodian. Camping, two weeks. Fishing, panfish and game fish. Golf, green fee. Picnicking. Trails. Hiking. Motoring.
<b>Waubonsie</b>	U.S. 275, Ia. 2, 239, 7 mi. SW. Sidney	Resident custodian. Camping, two weeks. Shelter. Picnicking. Trails. Hiking. Scenic. Historic interest.
<b>Wild Cat Den</b>	U.S. 61, Iowa 160, 3 mi. E. Fairport	Resident custodian. Camping, two weeks. Shelter. Picnicking. Trails. Hiking. Historic interest.
<b>Woodman Hollow</b>	County road, 3 mi. N. Lehigh	Hiking. Inaccessible. Fishing.
<b>Woodthrush</b>	County road, 2 mi. SW. Lockridge	Undeveloped.

**Hepatica**



**Dolliver Memorial State Park**

In north central Iowa along the Des Moines River there are many spots endowed by nature with unsurpassed beauty in all seasons of the year. Springtime is heralded by blossoming wildflowers and trees. Summer brings the



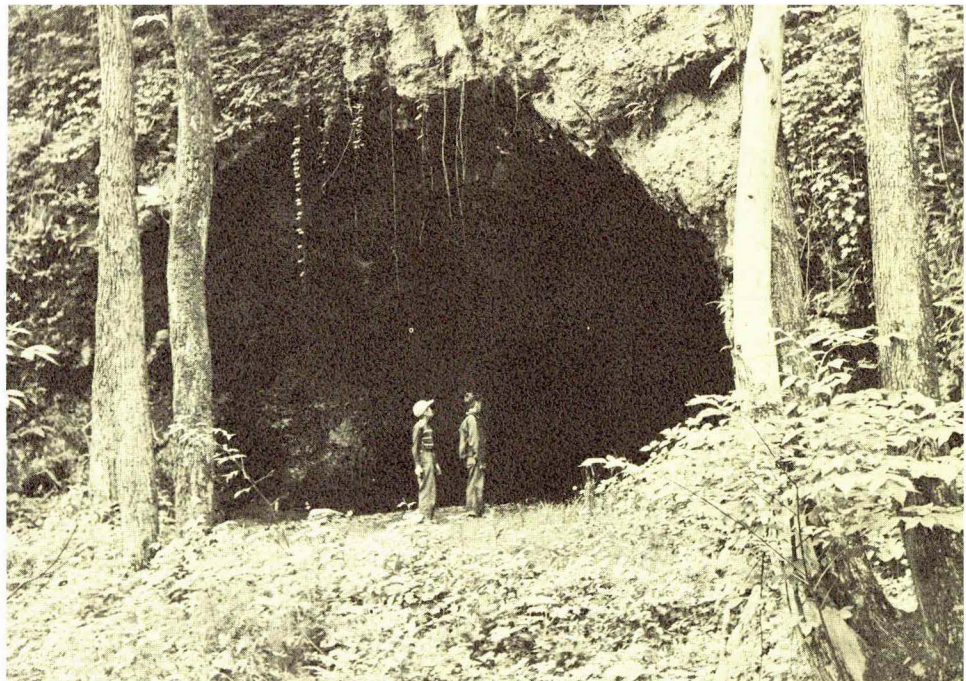
**Lake of Three Fires**



Before and after the picnic for those with excess energy—games in the open air—shouts of the children at play, winding trails to follow, strange cliffs and rock formations to explore. A bit of fishing not too far away or a nature hike.



**Gitche Manitou State Park**

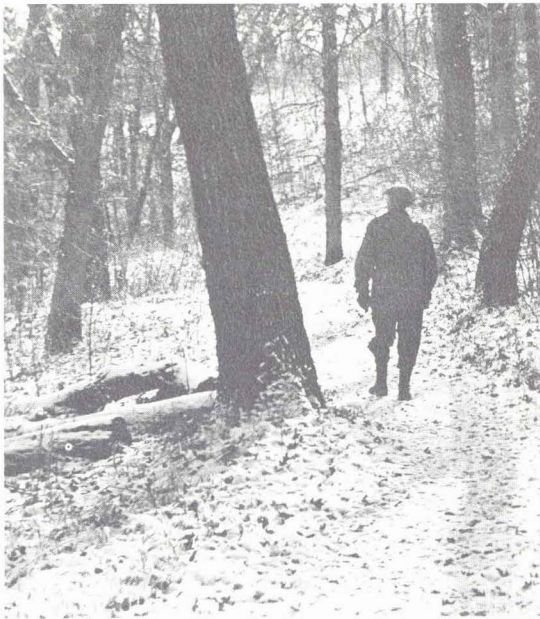


**Wapsipinicon State Park**



Maybe this old cottonwood saw the arrival of Lewis and Clark in 1804. The State Park here preserves the historic ground on which they landed. Here they learned that the *Petite Rivere de Cuouex*, which is now called the Little Sioux River, drains the *Lac d'Esprit* (Spirit Lake).





Lake Macbride State Park

Ledges State Park



Winter vacation? An outdoor week-end in the snow? Iowa's parks are open for your enjoyment of bobsledding, skiing, ice skating, ice fishing, etc., depending on the park; and they are all simply beautiful in their snow covered winter grandeur. Photo fans will get many shots not obtainable in other seasons. Sunsets and winter silhouettes are subjects unparalleled in other seasons.

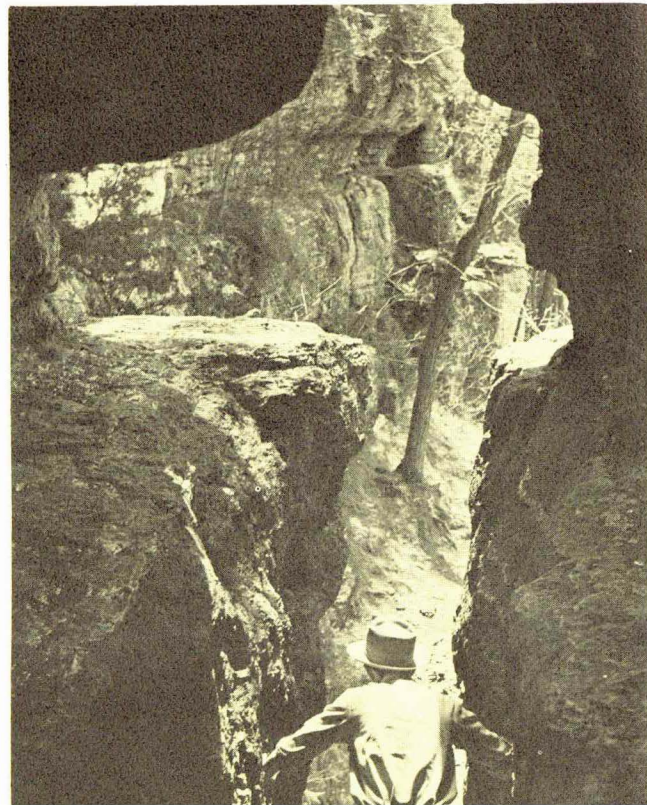


Ledges State Park

Lacy-Keosauqua State Park



Backbone State Park







Ledges State Park



Kalsow Prairie

Photographic subjects and ideas are unlimited in the state areas. Scenics, wildlife and water settings—anything desired



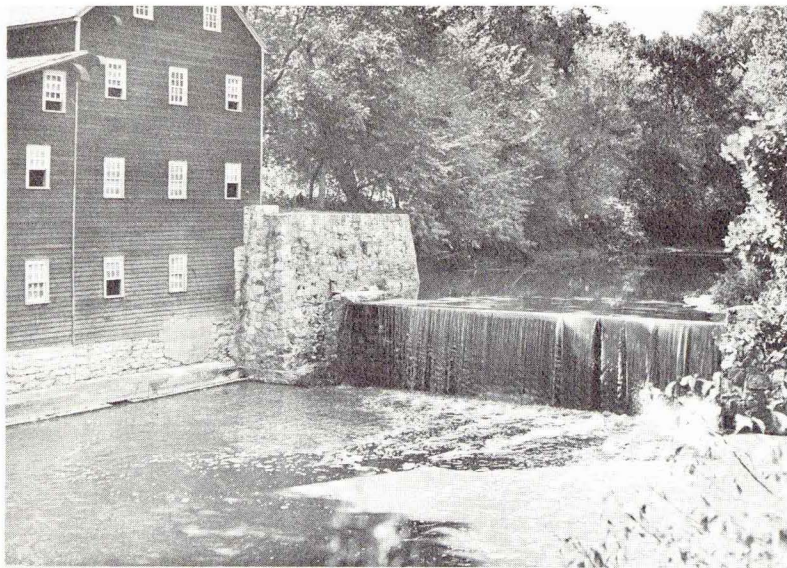
Stone Park

Many of the State Parks in Iowa are closely related to the history of American exploration and settlement. From Pike's Peak State Park in Clayton County, there is an excellent view of the junction of the Wisconsin and Mississippi Rivers. It was here, on June 17, 1673, that Marquette and Joliet discovered the upper Mississippi. The high bluff now occupied by the park was explored by Zebulon Pike on September 5, 1805 as a possible site for a fort.

Lacey-Keosauqua State Park, in Van Buren County, is associated with two dramatic episodes in Iowa's history. In 1837, the Governor of Missouri hired Joseph C. Brown to resurvey the northern boundary of Missouri. When Missouri was admitted to statehood in 1821, its northern boundary was described as "the parallel of latitude which passes through the rapids of the river Des Moines." This parallel of latitude had been established in 1816 by a surveyor named Sullivan. Brown did not know that "the rapids of the river Des Moines" were in the Mississippi River and were so named because they began near the mouth of the Des Moines River. He therefore looked for rapids in the Des Moines River itself and finally found a few ripples in the Great Bend of the Des Moines River at Keosauqua. From these "rapids," he ran a line due west to the Missouri River.

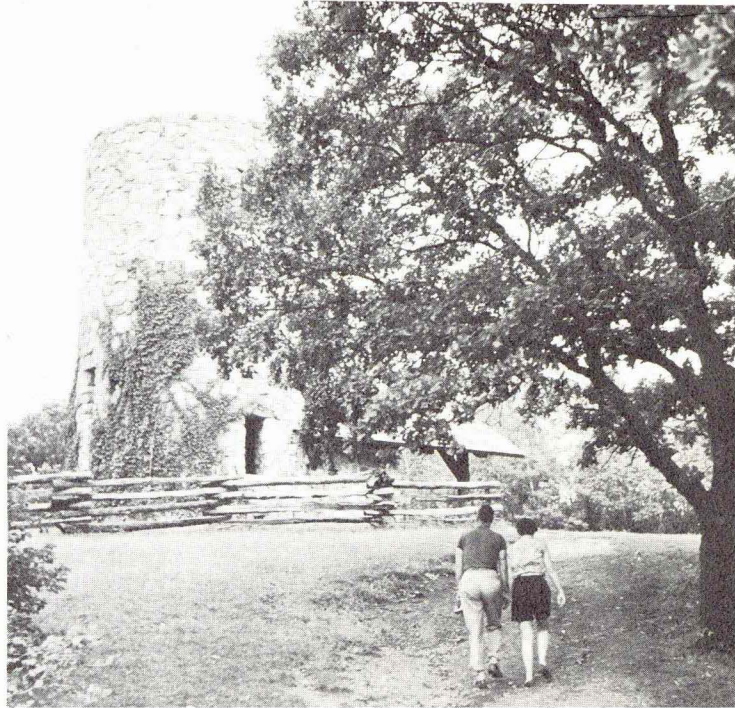
The new line was accepted by the legislature of the State of Missouri in 1839 as the northern boundary of the state, thereby annexing about two thousand and six hundred square miles of Iowa land and, incidentally, many bee trees that were prized by early Iowa settlers. Governor Lucas of Iowa sent the territorial militia to resist this invasion, and Governor Boggs dispatched the Missouri militia to defend the Brown line, but the two militias missed connections, and no blood was ever shed in the "Honey Tree War." After long arbitration, the Supreme Court of the United States decided that the earlier Sullivan line was the correct boundary between Iowa and Missouri.

Elk's Ford in Lacey-Keosauqua State Park marks the point at



**Wildcat Den State Park**

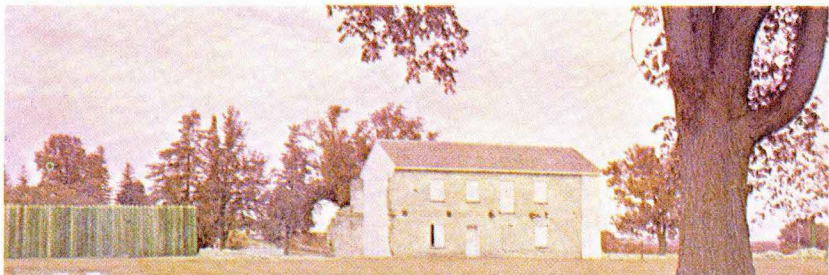
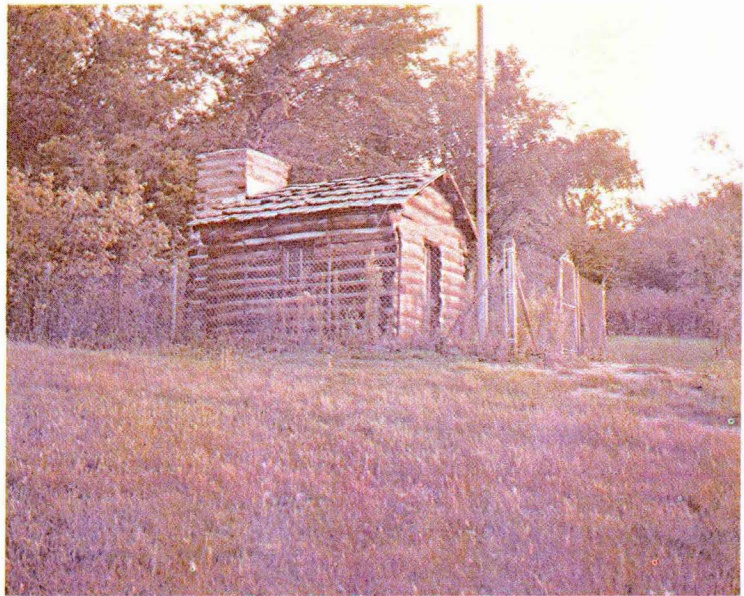
Bellevue State Park, in Jackson County, is a quiet recreation area now, but in the frontier days of 1840 it rang with the echoes of gunfire in the “Bellevue War.” River gangsters defied the feeble efforts of law enforcement officers until the citizens were organized into a “posse comitatus.” The leader of the outlaws and several of his followers were shot down, and the fate of the remaining gangsters was submitted to a vote of the posse. The voting was done with beans: white beans for hanging and red beans for flogging. When the beans were counted, there were three more red beans than white ones. In accordance with the vote, the gangsters were well flogged, placed in boats and told never to return.



Plum Grove Historical Monument



Gardner School Historical Monument



THE ROSE  
State Flower of Iowa



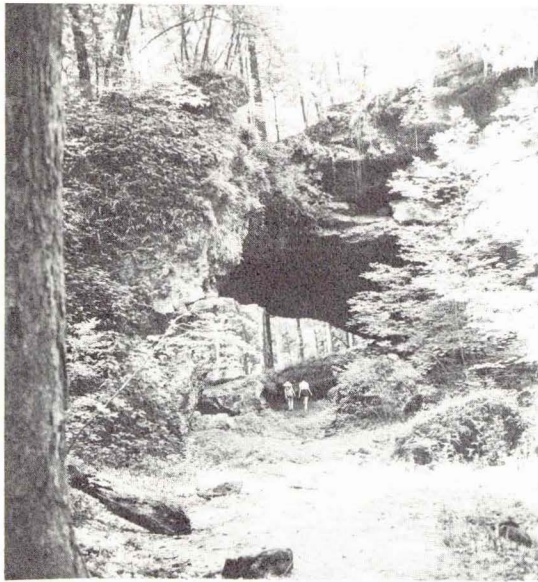
Eastern Goldfinch State Bird of Iowa

Old Fort Atkinson, in Winneshiiek County, holds the distinction of having been the only fort ever built to protect one tribe of Indians from hostile Indian neighbors. It was constructed under orders of General Henry Atkinson, after whom it was named. The garrison which occupied it from 1840 to 1849 was commissioned to protect the Winnebago Indians on the Neutral Ground from the Sioux to the north and the Sac and the Fox to the south.

Plum Grove, in Johnson County, was the home of Robert Lucas, the first territorial Governor of Iowa. It was built in 1844 amid a thicket of plum trees. It is located in the southeast section of Iowa City, not far from the Old Stone Capitol—for which Governor Lucas laid the cornerstone on July 4, 1840. The Lucas home has been carefully restored and is one of the most interesting relics of Iowa's past.

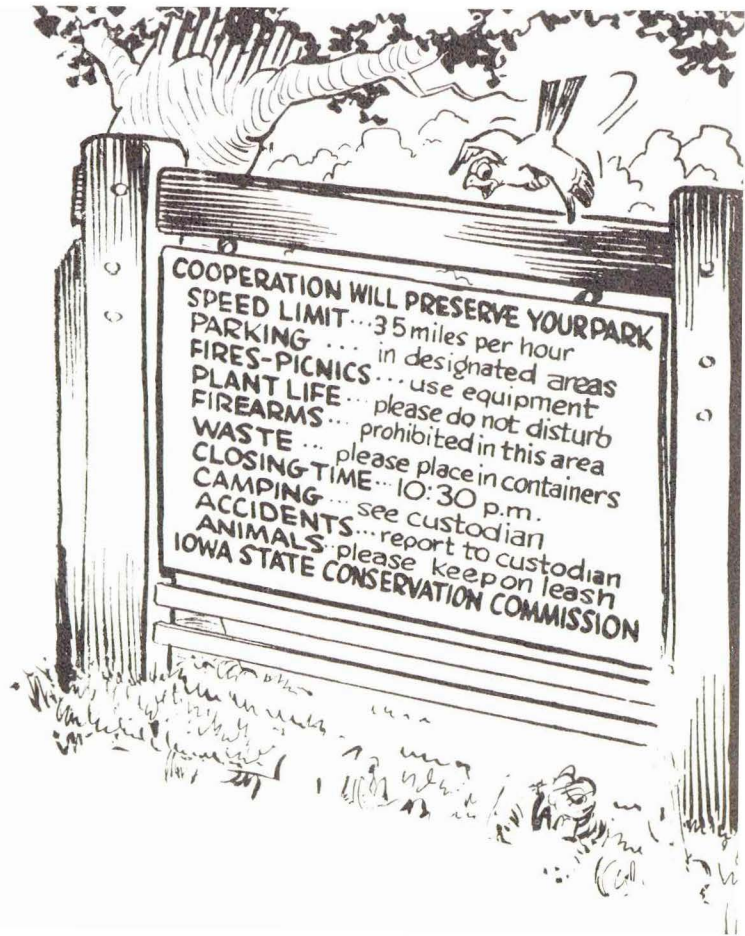
These are but a few of the many historic sites which may be found in or near Iowa's State Owned Recreational Areas.

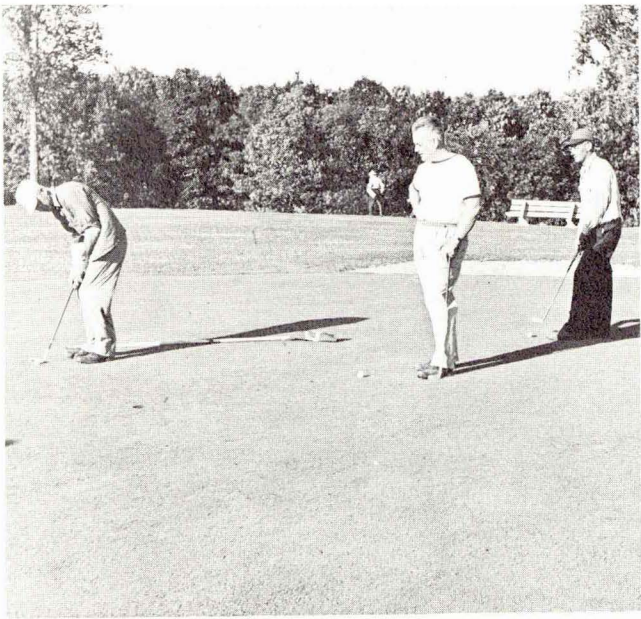
Big Creek Mill, the last remaining lumber mill in Iowa, is located in...



Maquoketa Caves State Park

As has often been stated, our natural resources are not unlimited except in the sense of your appreciation. What has been set aside and maintained can be destroyed through misuse and neglect. We WANT you to enjoy yourself and ask only that you please observe regulations.





**Pine Lake State Park**

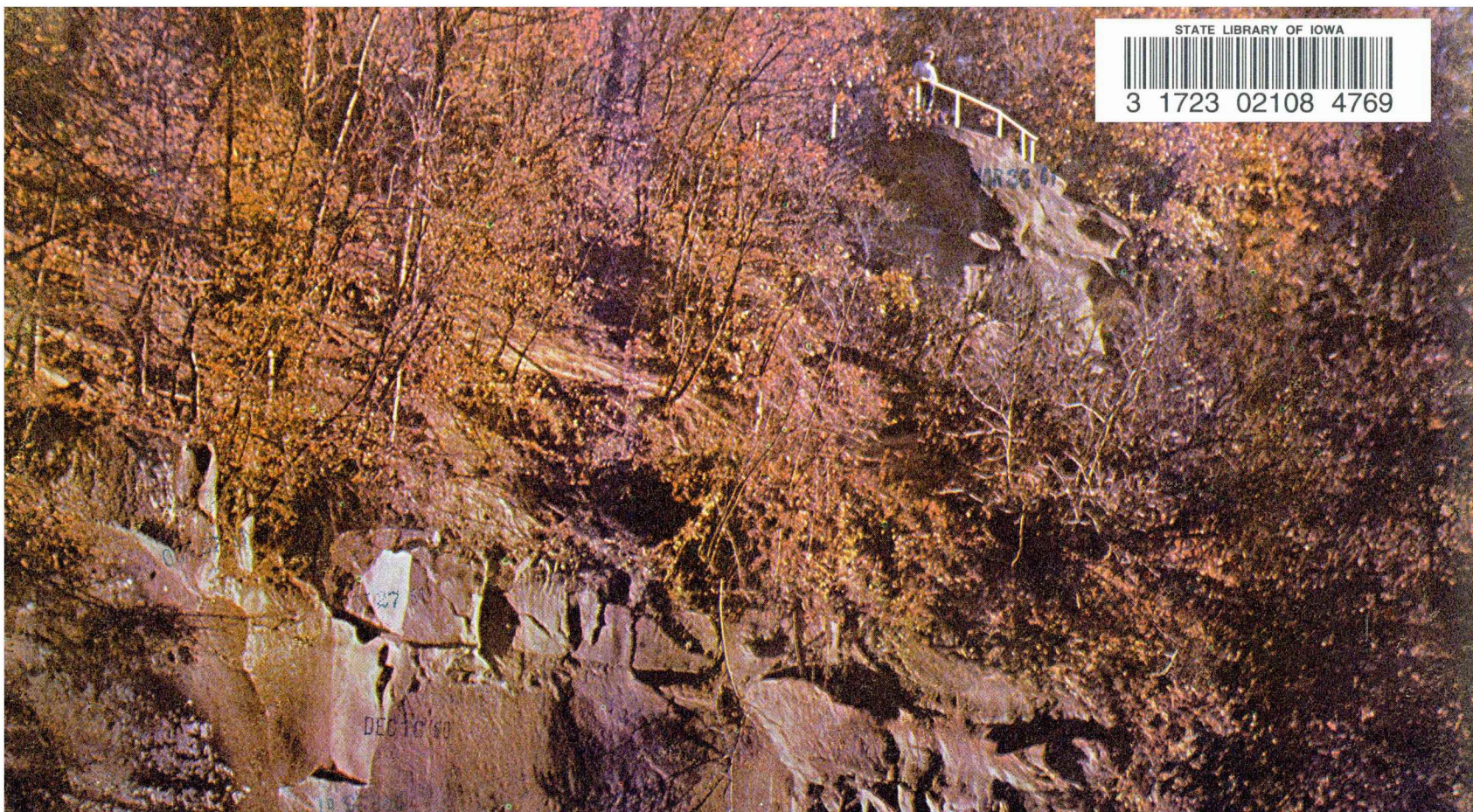
Does your outdoor fun demand golf? At least a half dozen of Iowa's parks have nice courses; many of them hilly and all are sporty with holes that really test your skill. Lacey-Keosauqua, Bellevue, Wapsipinicon, Pine Lake, Kearny and Beaver Meadow all have courses within their confines. Many



STATE LIBRARY OF IOWA



3 1723 02108 4769



0

27

DEC 16 '60

1723 02108 4769