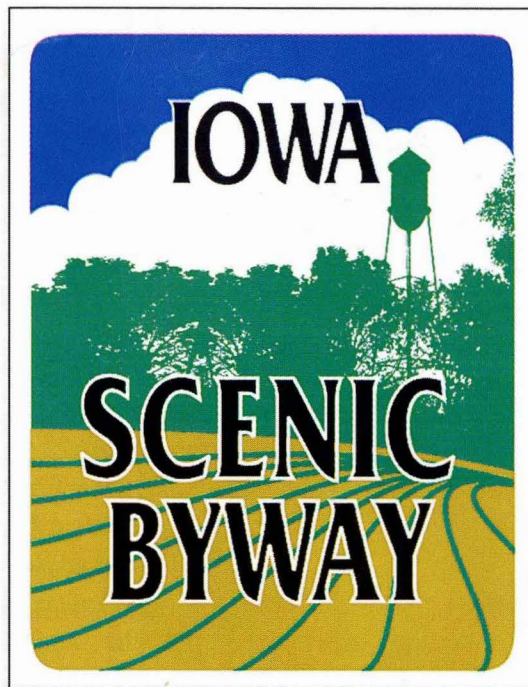
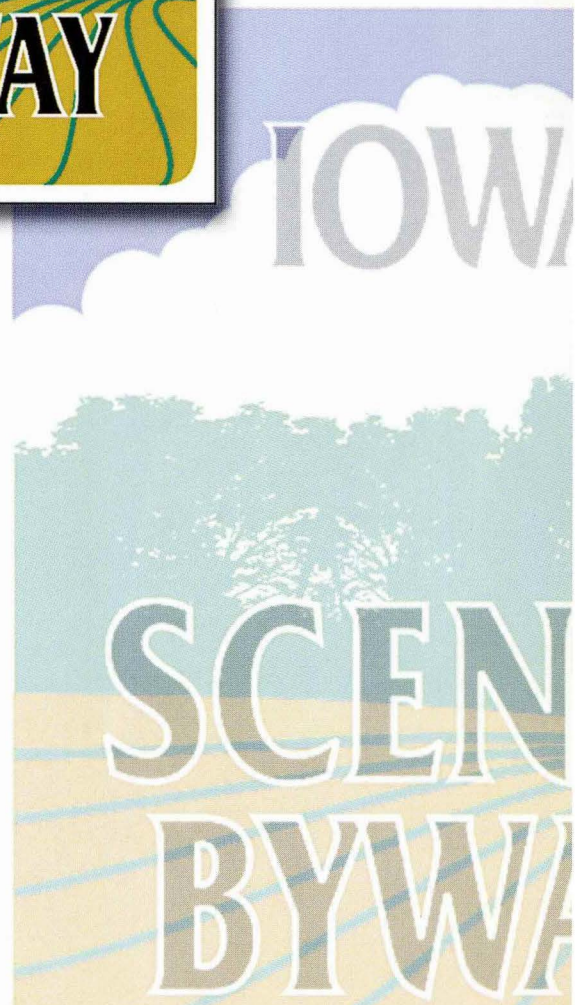


F
619.3
.S34
2001

SCENIC BYWAYS OF IOWA

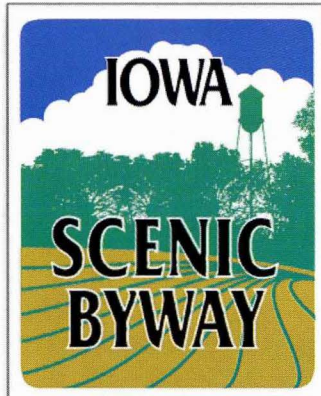


Iowa Department
of Transportation



WELCOME TO THE

SCENIC BYWAYS OF IOWA



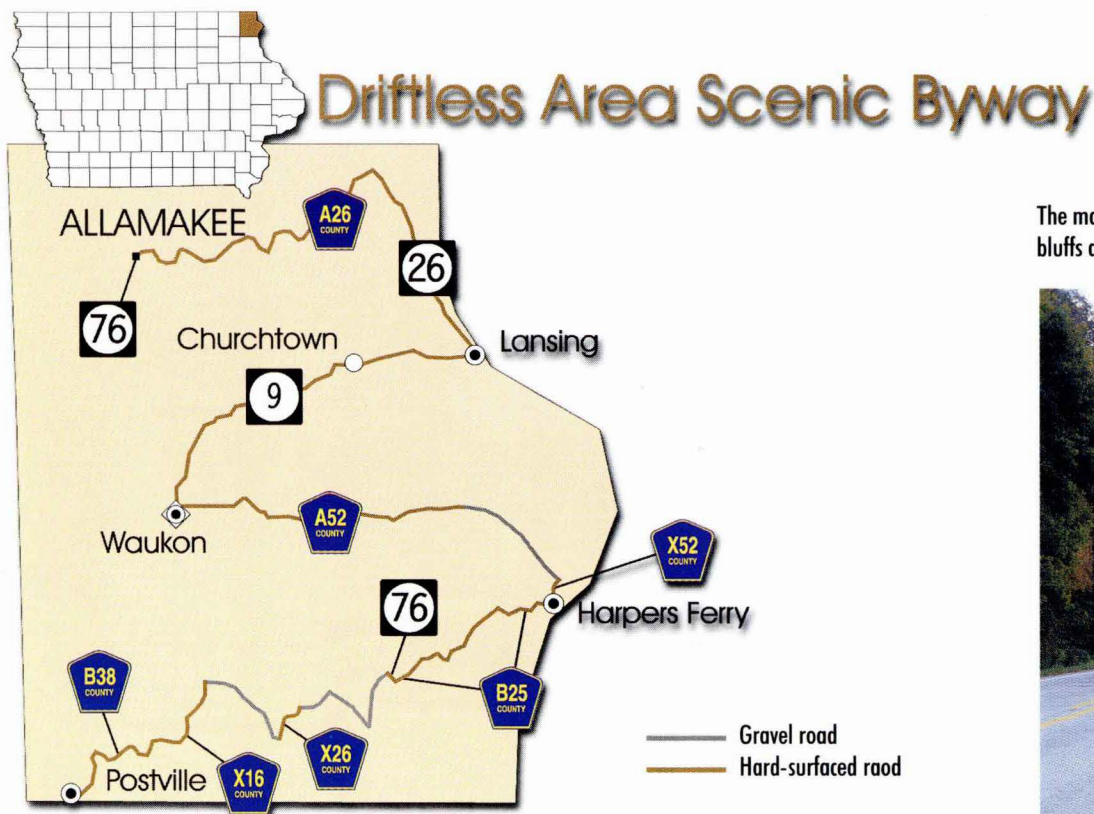
Watch for signs like this
along each Scenic Byway route.

Bypass traffic and experience a “scenic” change of pace by traveling along Iowa’s scenic byways. Iowa’s seven state-designated and two nationally-designated scenic byways are a great way to experience Iowa’s natural beauty, history and culture.

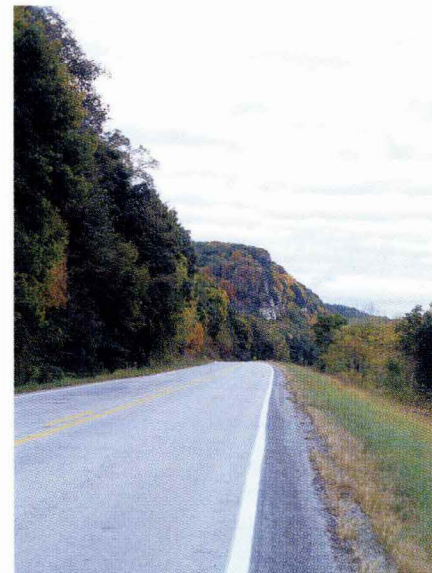
Stop to smell the wildflowers or listen to the songbirds, or follow an impulse to take a side trip to one of the many attractions and countryside hamlets. A camera is a must for these postcard-perfect vistas. You never know when you will encounter a bald eagle along the Mississippi River, rare plants and animals in the Loess Hills, or the exceptional architecture of unique barns, churches and other buildings along the route.

This brochure identifies each scenic byway route and the approximate mileage in terms of hard-surfaced and gravel roadways. Estimated driving time ranges from one and one-half hour to three and one-half hours, depending on your speed and the number of stops. These routes are offered for those of you who want to relax and stop often to enjoy the sights.

Scenic byways are clearly marked on the 2001 Iowa Transportation Map with a red dotted line.



The majestic Mississippi River bluffs along Iowa 26



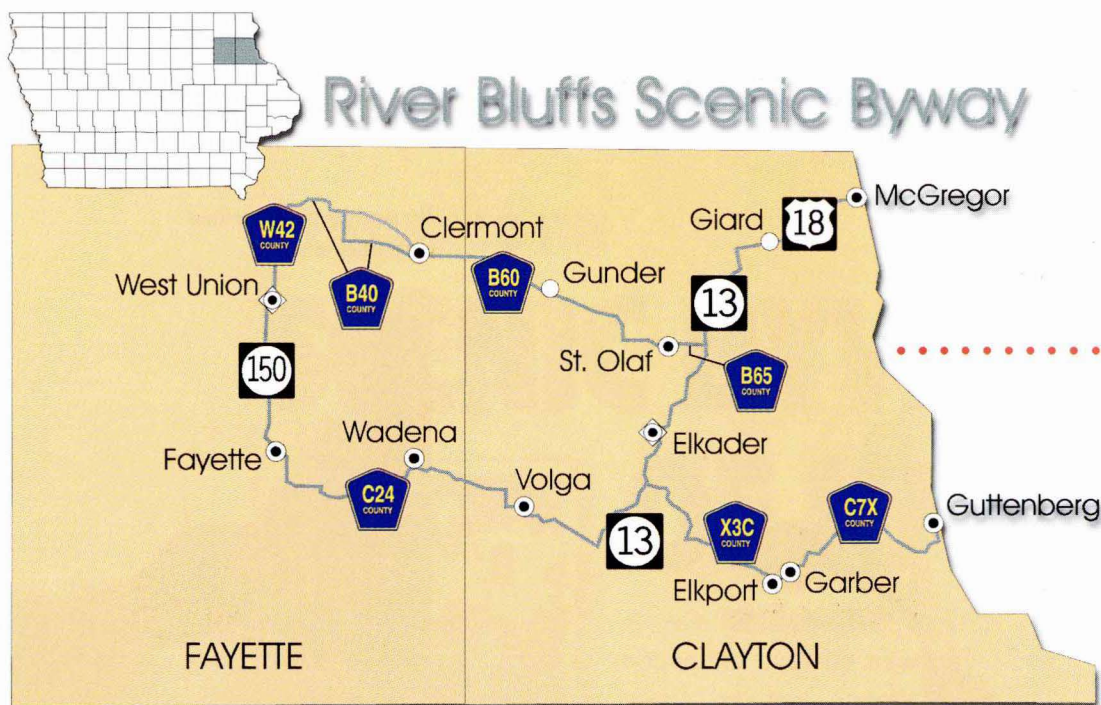
This beautiful scenic byway zigzags its way on hard-surfaced and gravel roads through the high relief, pre-glacial landscape in extreme northeastern Iowa in Allamakee County. The route begins at Postville and winds back and forth across the county, taking the traveler through the communities of Harpers Ferry, Waukon, Churchtown and Lansing. From Lansing, the route follows Allamakee County Road A-26 westerly to its end at the intersection of Iowa 76 in the northwest corner of the county.

The 100-mile route passes through the hills and valleys, forests, farms and limestone outcroppings of the Mississippi River bluffs country. The route contains two sections of gravel roadway which total 16 miles. These gravel sections are found northeast of Postville and northwest of Harpers Ferry.

For more information about the Driftless Area Scenic Byway, contact the Upper Explorerland Regional Planning Commission, 134 W. Green Street, P.O. Box 219, Postville, IA 52162, 319-864-7551.

Allamakee County autumn woodland





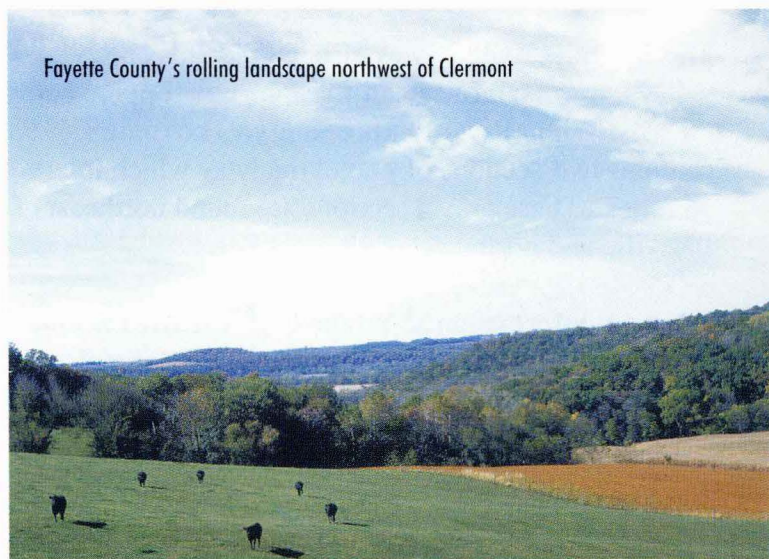
The River Bluffs Scenic Byway is found in northeast Iowa in Fayette and Clayton counties in what is locally known as “Little Switzerland.”

A 20-mile branch of the route in Clayton County begins south of Elkader on County Road X-3C and winds eastward through Elkport and Garber. From there it continues easterly on County Road C-7X ending in Guttenberg on the Mississippi River.

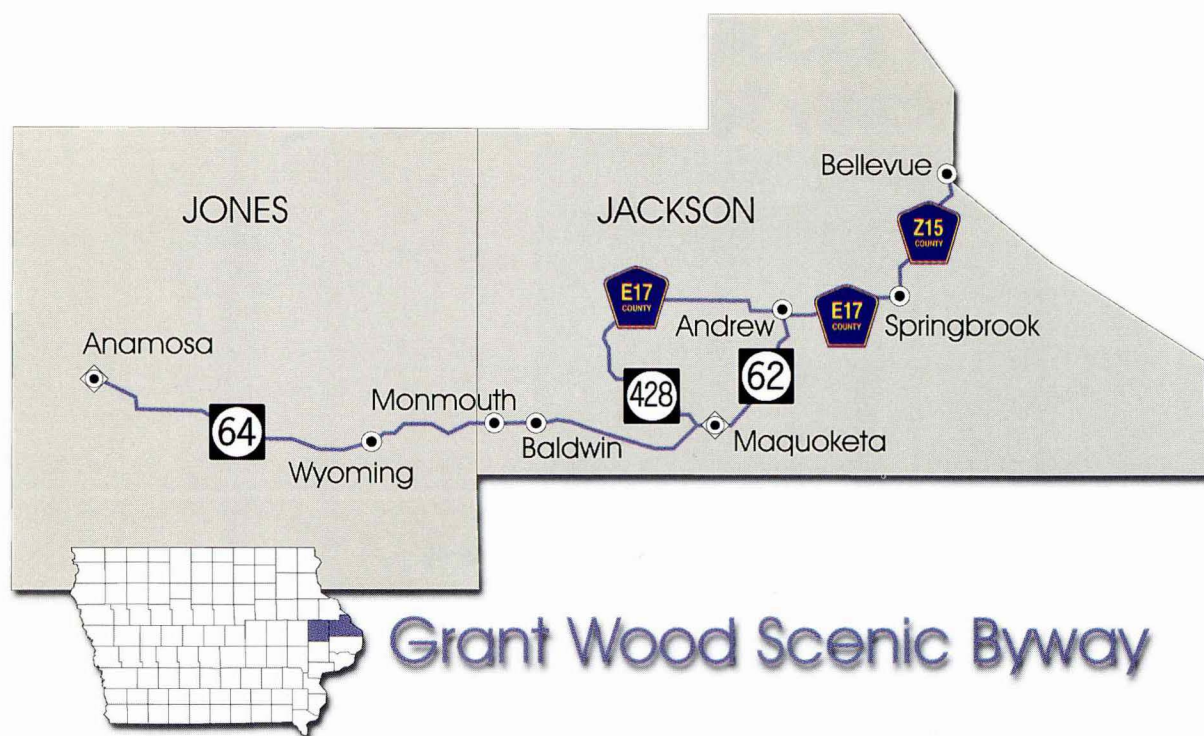
The balance of the approximate 109-mile River Bluffs Scenic Byway forms the shape of an old-fashioned ladle. The end of the handle, or beginning of the route, starts in McGregor on the Mississippi River in Clayton County. The route continues southwesterly along U.S. 18 and Iowa 13 to Elkader. Helping form the ladle’s cup, the route continues on Clayton and Fayette County Road C-24 through the cities of Volga, Wadena and Fayette. The route then switches to the north following Iowa 150 through West Union, and continuing north on Fayette County Road W-42 to the intersection with County Road B-40. Taking County Road B-40, the route continues to Clermont. From there it winds on County Road B-60 through Gunder and St. Olaf ending at Iowa 13 just east of Elkader in Clayton County.

The hallmarks of this byway are its breathtaking bluffs, panoramic hillsides, manicured farmland, secluded caves and rushing streams. Watch for spectacular rock formations and rugged limestone outcroppings that hug the road. The same stone, mined from rich quarries, lends a unique character to area barns, homes and churches.

For more information about attractions along the River Bluffs Scenic Byways, contact the Osborne Visitor, Welcome and Nature Center, 29862 Osborne Road, Elkader, IA 52043, 319-245-1516.



Fayette County's rolling landscape northwest of Clermont



Grant Wood Scenic Byway

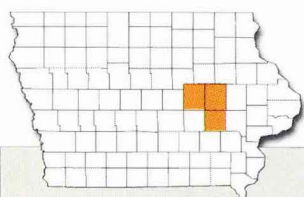
Located in eastern Iowa, the Grant Wood Scenic Byway begins south of Bellevue on Jackson County Road Z-15 at the Mississippi River. It continues through the city of Springbrook to Andrew, where the route splits and goes either in a northerly or southerly direction. The route rejoins at the city of Maquoketa. From there, the route continues westerly on Iowa 64 passing through Baldwin, Monmouth, and Wyoming to end in Anamosa in Jones County.

This 68-mile route, its rolling landscape and locally-quarried limestone structures, was an inspiration for Iowa's artist, Grant Wood. In the 1930s, Wood portrayed the community of Stone City (a few miles west of Anamosa) and surrounding countryside in celebrated works such as "Stone City" and "Fall Plowing."

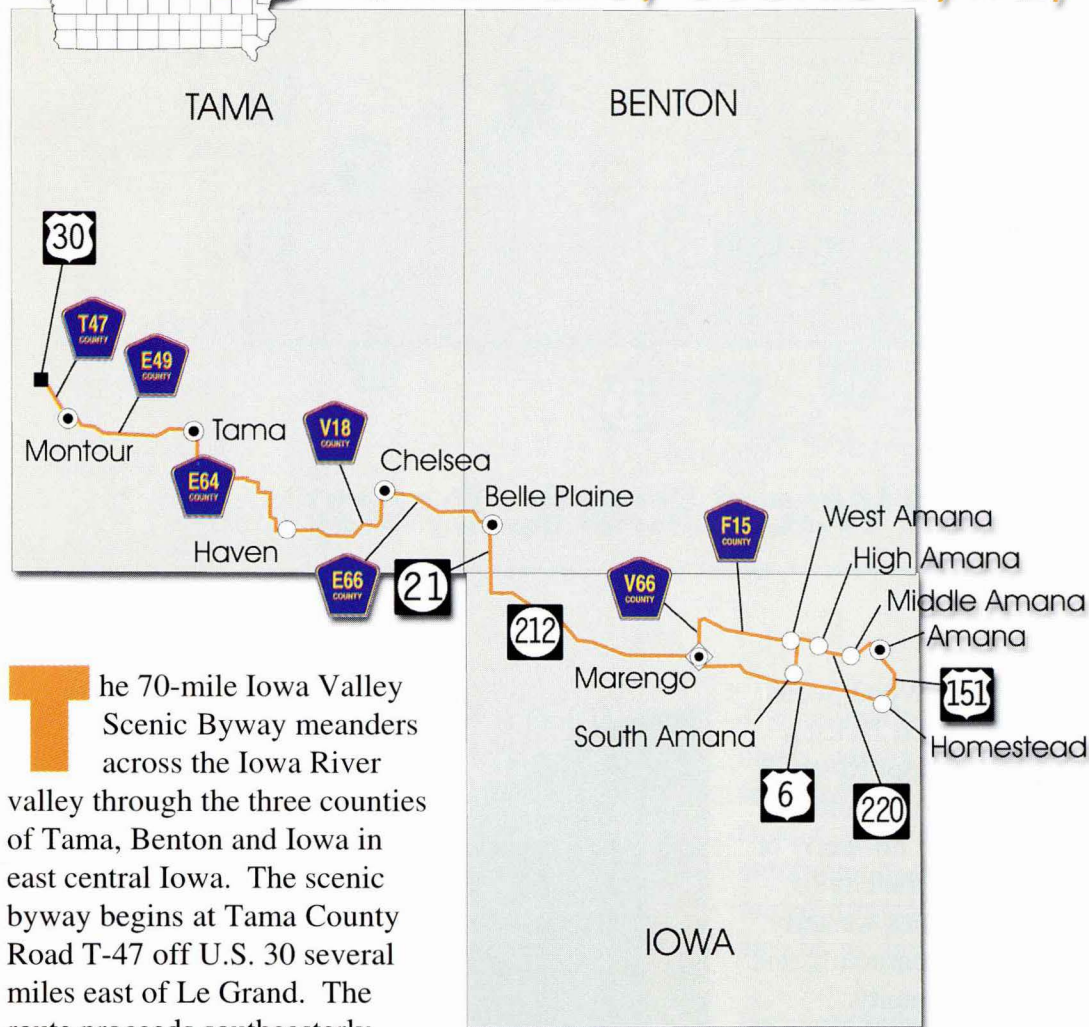
For more information about attractions along the Grant Wood Scenic Byway, contact the Jackson County Welcome Center, 60488 Hwy. 64, Sabula, IA 52070, 319-687-2237; or the Jones County Tourism Office, Anamosa Chamber of Commerce, 124 East Main St., Anamosa, IA 52205, 319-462-4879.



Potter's Mill at Bellevue near the Great River Road



Iowa Valley Scenic Byway

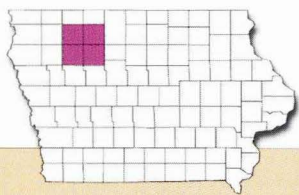


The 70-mile Iowa Valley Scenic Byway meanders across the Iowa River valley through the three counties of Tama, Benton and Iowa in east central Iowa. The scenic byway begins at Tama County Road T-47 off U.S. 30 several miles east of Le Grand. The route proceeds southeasterly through Montour and skirts the Meskwaki Settlement (of the Sac and Fox Nation) entering Tama from the west on County Road E-49. From Tama the route extends through the communities of Haven, Chelsea, Belle Plaine and Marengo. It then makes a loop encompassing the historic Amana Colonies. The seven villages of South Amana, Homestead, Amana, East Amana, Middle Amana, High Amana, and West Amana formed a communal society that today is known for its many crafts, including fine wood furniture and excellent German-style restaurants.

For more information about attractions along the Iowa Valley Scenic Byway, contact the Amana Colonies Convention and Visitors Bureau and Welcome Center, 39 38th Ave., Suite 100, Amana, IA 52203, 800-579-2294; or visit the Amana I-80 Welcome Center, I-80, Exit 225, Amana, IA, 319-668-9545.

Traditional countryside scene off Iowa County Road F-15 in West Amana

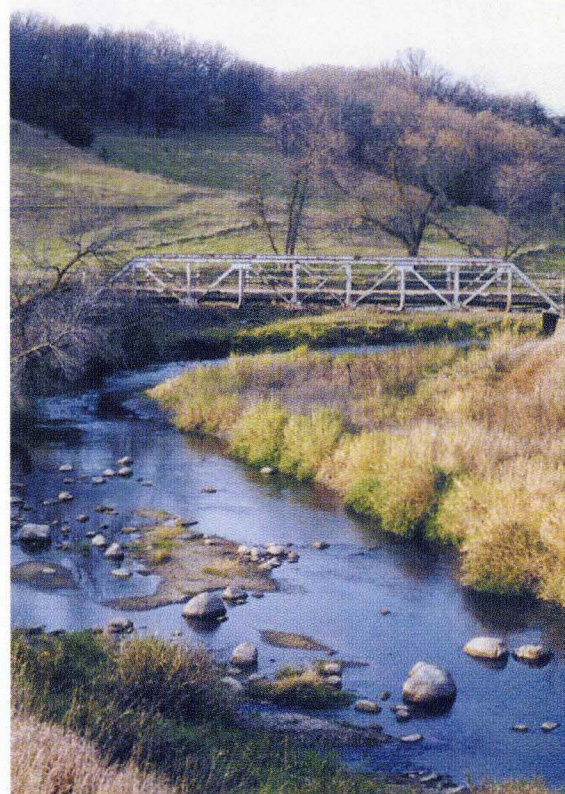




Old O'Brien Glacial Trail Scenic Byway



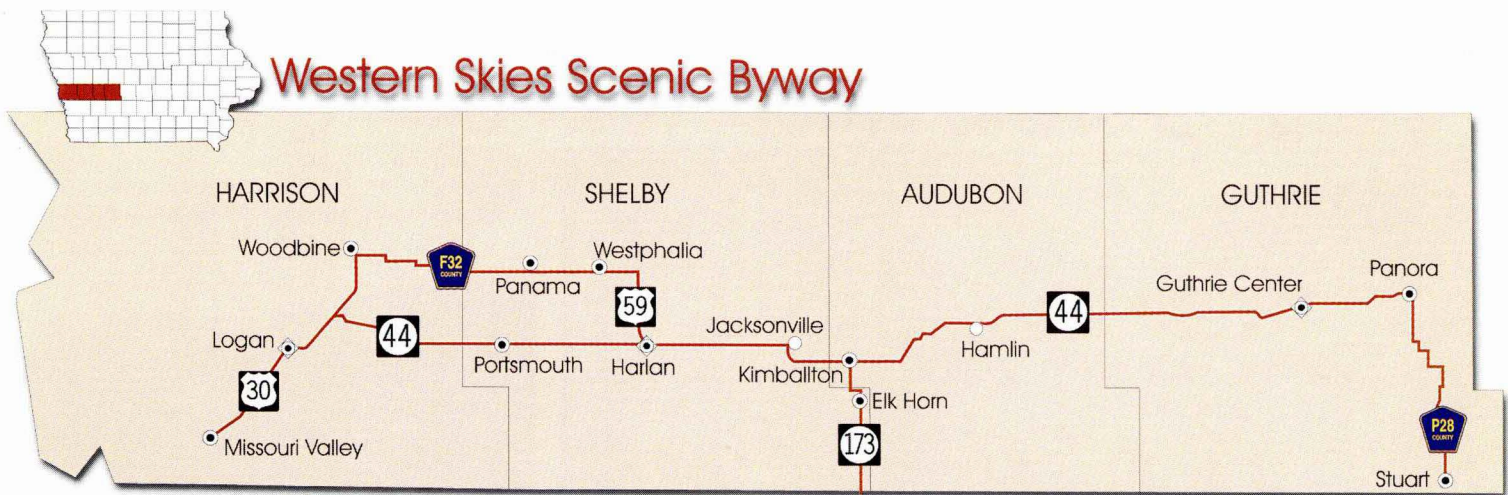
Waterman Creek meanders near this four-county byway.



This unique byway takes in a four-county area (O'Brien, Clay, Cherokee and Buena Vista) of "rolling plains of glacial drift" in northwest Iowa. The 36-mile route begins in Clay County on Iowa 10 at the intersection with County Road M-36, a few miles east of Peterson. It then proceeds south through Linn Grove to Buena Vista County Road C-16; west to Cherokee County Road M-12; and north to Iowa 10 in O'Brien County. From there it follows Iowa 10 through Peterson to M-36, its point of origin.

The byway crosses the Little Sioux River several times and offers views of rolling hills and forested river valleys, as well as a rich history of native and European peoples. Also, in the corridor, a traveler might see rising from the horizon like flowers, modern steel windmills providing an alternative, renewable energy source for homes and businesses in the area.

For information on local attractions, contact the city of Sutherland, 409 Ash, Sutherland, IA 51058, 712-446-2243.

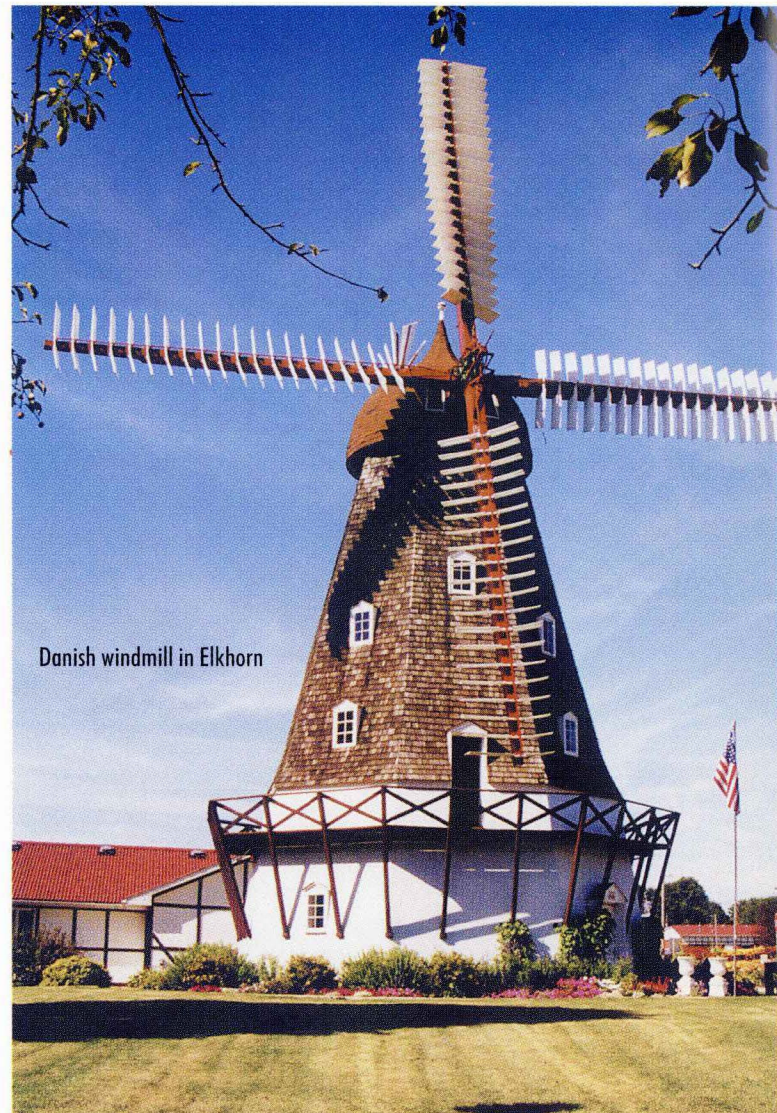


Found in western Iowa, the 140-mile route begins at Stuart in Guthrie County and spans the four counties of Guthrie, Audubon, Shelby and Harrison. From Stuart the byway goes north to connect with Iowa 44 in Panorama. It then rolls along a ridge top through the towns of Guthrie Center and Hamlin, giving wide, far views on both sides of the roadway of terraced hillsides and farmsteads nestled into deep valleys.

The route then passes through the Danish Villages of Elk Horn and Kimballton where travelers may view vast apple orchards and traditional Danish windmills. Follow the signs as they take you past Jacksonville and into Harlan, where the route forms a loop. On the northern portion of the loop, you will travel through Westphalia, Panama and Woodbine. The southern portion of the loop travels through the community of Portsmouth, and after rejoining the main route, continues to the city of Missouri Valley.

At the western end of the byway, the Loess Hills are introduced in a subtle but enticing way. This unique landform, located on the eastern edge of the Missouri River valley, was formed by wind and river-sculpted glacial silt deposits.

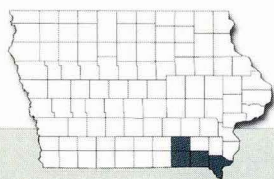
For more information about the Western Skies Scenic Byway, contact the Danish Windmill Museum and Welcome Center, 4038 Main Street, Elk Horn, 800-451-7960; or the Harrison County Historical Village and Welcome Center, located three and one-half miles north of Missouri Valley on U.S. 30, 712-642-2114; or the Loess Hills Scenic Byway and Visitors Center at 109 Oak Street in Moorhead, 712-886-5441.



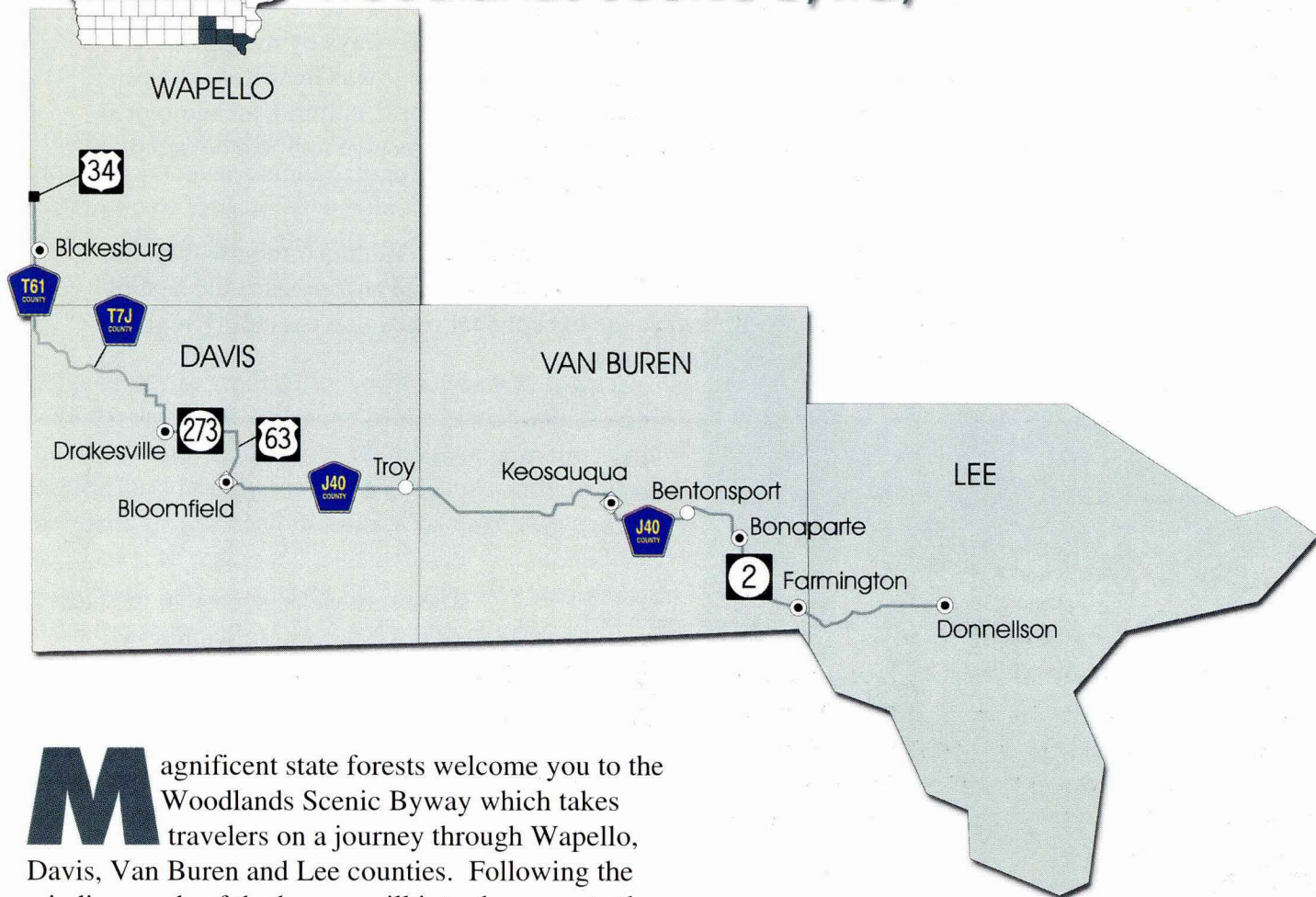
Danish windmill in Elkhorn



The east side of Harlan's town square



Woodlands Scenic Byway



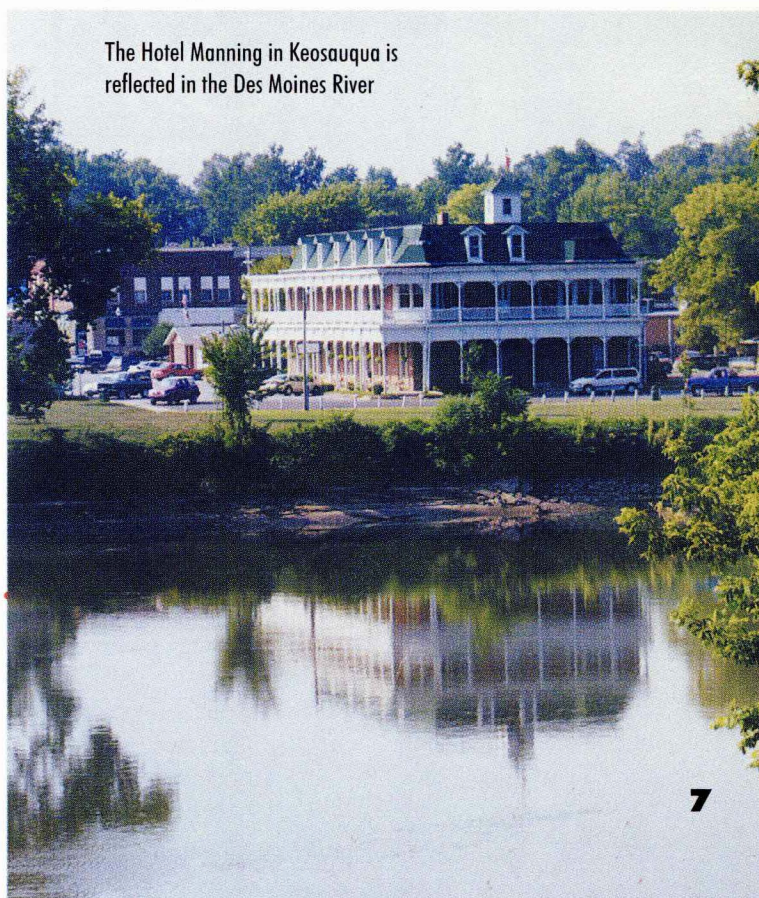
Magnificent state forests welcome you to the Woodlands Scenic Byway which takes travelers on a journey through Wapello, Davis, Van Buren and Lee counties. Following the winding roads of the byway will introduce you to the people and scenery of southeastern Iowa.

The 85-mile scenic byway begins on Wapello County Road T-61 at U.S. 34 north of Blakesburg. It curves southeasterly on back roads past farmsteads near the communities of Drakesville and Bloomfield in Davis County where Old Order Amish go about their traditional ways.

The route then wanders through Troy in Davis County and the historic villages of Keosauqua, Bentonsport, Bonaparte, and Farmington in Van Buren County. The five villages were once active steamboat ports of call on the Des Moines River. From Farmington, the route goes to Donnellson in Lee County where it ends.

The Davis County Welcome Center, 301 N. Washington, Bloomfield, IA 52537, 515-664-1104, will provide information on attractions along the Woodlands Scenic Byway.

The Hotel Manning in Keosauqua is reflected in the Des Moines River



IOWA'S NATIONAL SCENIC BYWAYS

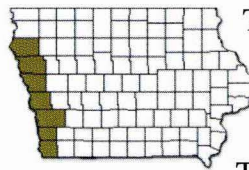
In June 2000, two Iowa roadways were designated as National Scenic Byways by the U.S. Department of Transportation. The Loess Hills Scenic Byway and the Iowa Great River Road received the national designation because of their scenic, natural, historic, cultural, archeological and recreational qualities. These routes are the first two routes in Iowa to receive national designation, and were previously designated as scenic byways in Iowa's Scenic Byway Program.

The National Scenic Byway Program is managed by the Federal Highway Administration within the U.S. Department of Transportation. The program was designed to recognize and enhance the best of America's transportation corridors. Designated byways are exceptional roads that exemplify regional characteristics of the nation's culture, history and landscape.

LOESS HILLS SCENIC BYWAY

The Loess Hills Scenic Byway is a 220-mile route in western Iowa found in Plymouth, Woodbury, Monona, Harrison, Pottawattamie, Mills and Fremont counties. When roaming this byway, travelers have the option of selecting 13 excursion routes for additional experiences. The byway runs from the Missouri state border south of Hamburg, Iowa, north to Akron, north of Sioux City.

View from atop Murray Hill in Harrison County



The route weaves through the heart of a landform of windblown glacial silt deposits known as the Loess (pronounced "luss") Hills.

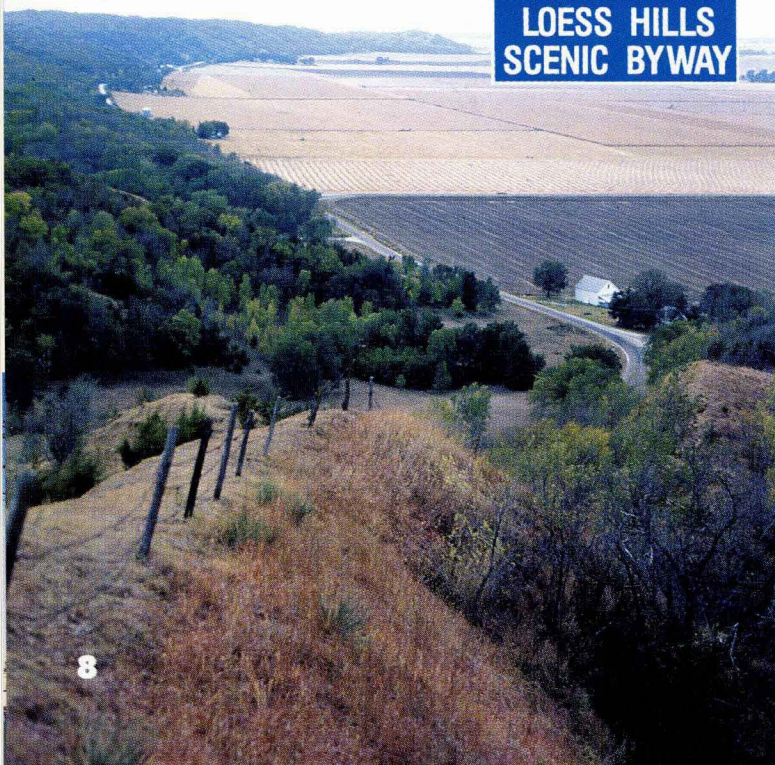
This natural geological wonder is found in only two places in the world, Iowa and China.

The rugged landscape and strong contrasts in weather and soil conditions provide refuge for a number of rare plants and animals, many of which are found only in the Loess Hills.

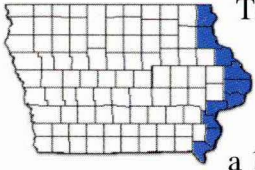
Not only does the Loess Hills region offer a unique natural heritage, it supports many culturally and historically important sites, public parks and recreation areas.

Blue and white highway signs, like the one on the left, mark this route.

For a complete map of the Loess Hills Scenic Byway and more information on the byway and the Loess Hills, visit the Harrison County Historical Village and Welcome Center on U.S. 30, three and one-half miles east of Missouri Valley, or call 712-642-2114.



IOWA GREAT RIVER ROAD



The Iowa Great River Road parallels the Mississippi River on the state's eastern border from Missouri to Minnesota, and is part of a 10-state route stretching from Louisiana to Minnesota. This 326-mile corridor traverses 10 Iowa counties from Keokuk at the south-eastern tip of Iowa to New Albin in the far northeast corner. Green and white pilot wheel highway markers show you the way along the Great River Road National Scenic Byway.

Travelers from around the world journey to Iowa to view the dramatic landscape of the Mississippi River limestone bluffs cut by glacial melt water in the north and the broad sandy flood plains in the south; to watch the soaring eagles and thousands of migrating geese and ducks; to seek out the sacred sites and mounds of early Native Americans at Effigy Mounds National Monument; and to watch commercial barges and recreational watercraft navigate the locks and dams on the river.

Visit the towns and cities along the route and discover a rich and vibrant history of this famous waterway. The Mississippi River's very existence greatly influenced the westward expansion of this country.

To obtain more information about the Great River Road, stop by the Port of Burlington Welcome Center at 400 Front Street in Burlington, 319-752-8731; or the Port of Dubuque Iowa Welcome Center at Third Street and Ice Harbor in Dubuque, 563-556-4372.

The Great River Road winds through Clayton County



Night time view of the Mississippi River
from Pike's Peak State Park



For more information on Iowa's Scenic Byways, contact:



**Iowa Department
of Transportation**

Office of Design
Corridor Development
800 Lincoln Way
Ames, IA 50010
515-239-1792