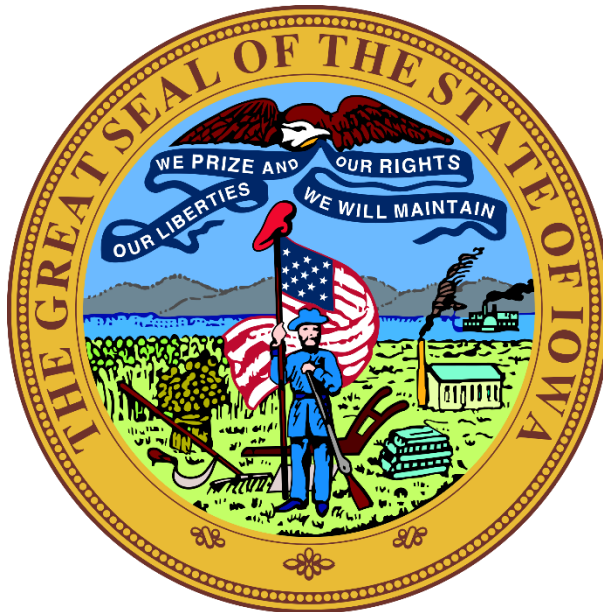




---

Iowa Board of Parole  
Annual Report Fiscal Year 2019

---



Helen Miller, Chair  
Norman Granger, Vice Chair

Board Members  
Sheila Wilson  
Kathleen Kooiker

Alternate Board Members  
Jackie Romp  
Greg Crocker  
Susie Weinacht

## Contents

Highlights .....	3
Agency Overview .....	4
Iowa Board of Parole Organizational Table.....	5
Board of Parole Members – Biographies.....	6
Strategic Plan .....	8
Parole Risk Assessment Tools.....	9
Iowa Corrections Offender Network (ICON) .....	9
Polycom Videoconferencing .....	9
Workload and Decision Statistics Summary .....	10
Graphs of Board’s Workload.....	12
Total number of parolees in FY19.....	12
Recidivism .....	14
Recidivism and Race .....	15
Parole Revocations .....	16
Recidivism by Reason for Return (New Conviction vs. Technical).....	17
Breakdown of New Charges Resulting in Return to Prison for FY19 .....	17
Community Success Program.....	18
Victim Services.....	19
Appendix A – Summary of Time Served Prior to Parole, Work Release, Special Sentence, EOS in FY19 .....	20

## Highlights

- The Board of Parole completed 13,385 deliberations in FY19. The deliberations resulted in 4,527 paroles, 1,986 work releases, and the imposition of 515 special sentences pursuant to Iowa Code Chapter 903B.
- The Board continued to prioritize its work with registered victims. The Board ensures registered victims have the opportunity to provide input into the deliberative process and are notified of decisions made by the Board. At the end of FY19 there were a total of 6,337 victims registered with the Board. There was a total of 3,633 victim notices sent in FY19. In addition, the Board continues to have a toll-free victim telephone number to facilitate communication: 1-866-448-4611.
- The recidivism rate for the FY19 reporting year was 39.1%.
- The membership of the Board of Parole changed in FY19. Helen Miller replaced Jeff Wright as Chair of the Board. Helen Miller was appointed as Chair in June 2019. Jeff Wright was appointed State Public Defender in March 2019. Board Member Sue Lerdal retired in June 2019.
- The Iowa Board of Parole attended the Association of Paroling Authorities International (APAI) annual conference and presented information regarding Iowa's parole review process of individuals convicted of life sentences as juveniles.
- A parole revocation diversion program named Community Success Program was implemented to provide additional community support to parolees who are struggling.
- Parole Board Administrative Law Judges issued 3,474 decision in FY19. It was the fourth year in a row that the revocation rate has decreased.
- In May 2019, ALJ Steve Clarke, ALJ Michelle Becker, Andrea Muelhaupt, and Patricia Jay presented at the Iowa Corrections Association Conference. They presented on the operations of the Board of Parole, training regarding requests submitted by the institutions and community-based corrections, as well as an overview of the parole revocation process.
- In February 2019, then-Chair Jeff Wright and Andrea Muelhaupt visited The Other Side Academy in Salt Lake City, Utah. The Other Side Academy is a 501(c)(3) residential rehabilitation diversion program where individuals learn pro-social, vocational, and life skills. The Other Side Academy has considered selecting Des Moines, Iowa as a future location to build another residential rehabilitation program.

## Agency Overview

The Board of Parole was established in 1907 by the 37<sup>th</sup> General Assembly. The Board is composed of one full-time chairperson, one full-time vice-chairperson, and three per diem members who are appointed by the Governor and confirmed by the Senate for staggered four-year terms. Board membership must include one layperson, one attorney licensed to practice law in Iowa with knowledge in correctional procedures and issues, and an individual who holds a master's degree in social work or counseling and guidance and who is knowledgeable about correctional procedures and issues. In addition, the Board must be as gender and political party balanced as possible. The Board reports directly to the Governor, and the chairperson serves at the pleasure of the Governor. The Board has its own support staff<sup>1</sup>, but also receives administrative support from the Iowa Department of Corrections (IDOC).

The mission of the Board is to enhance overall public safety by making evidence-based and informed parole decisions for the successful re-entry of offenders back into the community to become productive and responsible citizens. To achieve this mission, the Board:

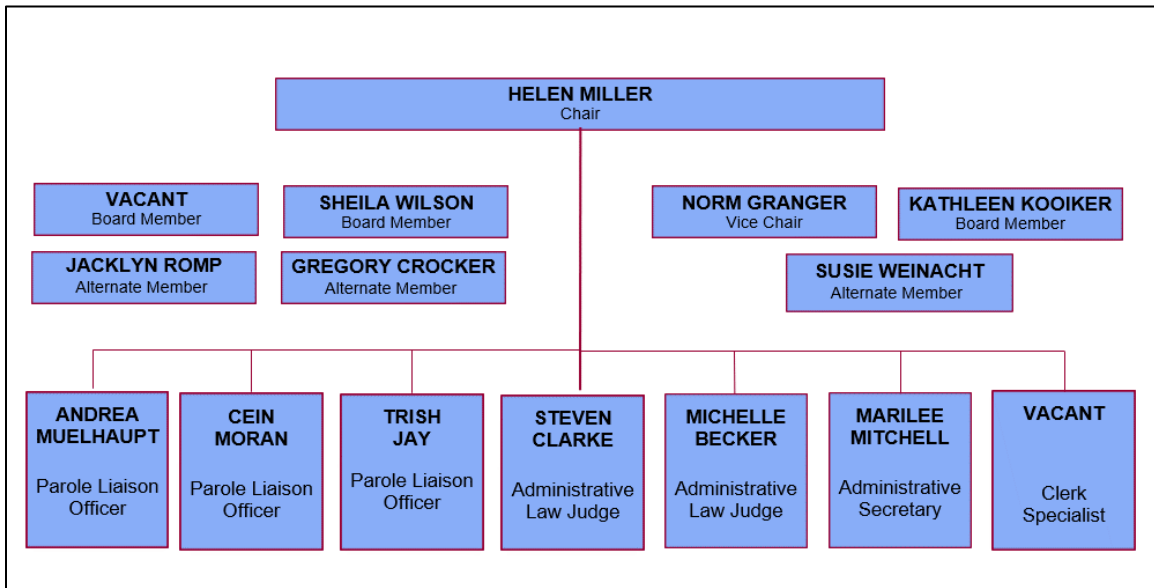
- Reviews and interviews offenders for parole and work release consideration in accordance with applicable administrative rules and via a deliberative system that respects the interest of the public, victims, and offenders, while being mindful of the finite resources available.
- Gathers and reviews information regarding new parole and work release programs being instituted or considered nationwide to determine which programs may be appropriate for use in Iowa.
- Utilizes evidenced-based practices to perform risk assessments and promote supervised release at the appropriate time and level.
- Works to enhance a collaborative working relationship with all stakeholders in the criminal justice system by providing technical assistance, information and counseling on matters related to the Board of Parole's purpose.
- Reviews and makes recommendations to the Governor regarding applications for reprieves, pardons, commutation of sentences, and special restoration of citizenship rights pursuant to Iowa Code Chapter 914.

---

<sup>1</sup> See Table of Organization

## Iowa Board of Parole Organizational Table

The organizational chart as of the last day of fiscal year 2019.



## Board of Parole Members – Biographies

**Helen Miller, Chair.** Appointed to the board by Governor Kim Reynolds in 2019, Miller holds a bachelor's degree in Business Administration from Howard University (Washington, DC), Master of Science in Library Science from Our Lady of the Lake University (San Antonio, TX) and a law degree from Georgetown University Law School (Washington, DC). Miller has worked as law librarian, practicing attorney (criminal defense, appeals, mental health), volunteer mediator, teacher and legislator. Miller served eight terms in the Iowa House of Representatives representing Fort Dodge and rural Webster County from 2003 to January 2019. She founded and hosted the national Iowa Criminal Justice Summit in 2015, and the mini criminal justice reforms summits in Fort Dodge, Des Moines, Iowa City and Ames (2015-16). Miller has received numerous awards and recognitions, most notably the National Black Caucus of State Legislators Lifetime Achievement Award (2018), Herbert Hoover Uncommon Public Service Award (2015), Polk County Women's Bar Association, Willie Stevenson Glanton Award (2016) and was inducted into the Iowa African American Hall of Fame (2012).

**Norman Granger, Vice Chair.** Appointed to the Board of Parole in 2014. Born in Newark, New Jersey. Norm attended the University of Iowa where he played football. In 1984 Norm was drafted by the Dallas Cowboys Football Club in the 5th round. Norm went on to play with the Cowboys from 1984-1986, the Atlanta Falcons in 1987 and retired from football following that season in 1988. Norm received a degree in Therapeutic Recreation from the University of Iowa. Over a twelve-year period, Norm's vocation was dedicated to youth and education in the Public Relations Department of Allen Hospital in Waterloo. He also worked as a Youth Counselor/Supervisor with the State Training School for Boys in Iowa and Residential Officer with the Waterloo Residential Correctional Facility in the First District.

**Sheila A. Wilson, Board Member.** Appointed to the Board of Parole in 2013. She holds a Bachelor's of Science Degree in Criminal Justice and a Master's of Arts Degree in Counseling from Illinois State University, Normal, Illinois. She retired from United States Probation, Southern District of Iowa, in April 2013. During her 21 years with U.S. Probation, Ms. Wilson worked as a United State Probation Officer and Senior U.S. Probation Officer, before retiring as Supervising U.S. Probation Officer. Ms. Wilson was also employed by the Illinois Department of Corrections for 10 years. She started her career in Criminal Justice at the Dwight Correctional Center; Dwight, Illinois in 1976 as a Correctional Counselor and in 1978 was promoted to Clinical Services Supervisor. In 1980 she was appointed to serve as the Assistant Warden of Programs at the New East Moline Correctional Center, East Moline, Illinois. Ms. Wilson was responsible for establishing and monitoring Health Care, Recreation, Clinical Services, Educational and Vocational Services and Religious Services at this minimum-security facility for 750 offenders. She is a member of the Association of Paroling Authorities International and Iowa Prison Industries Advisory Board.

**Kathleen Kooiker, Board Member.** Appointed to the Board of Parole in 2018. Born in Commack, Long Island, New York, she moved to Iowa in 1972 and graduated from Creston High School in 1975. She holds a Bachelor of Criminal Justice degree from Simpson College. Kathleen was a legal assistant in the Reynoldson Law Firm and the Clarke County Attorney's office before being appointed Clarke County Magistrate in 1983. She served on the bench for over thirty years. She was affiliated with Children and Families of Iowa for two years, assisting abused and neglected children, providing resources to their parents while the families were under court supervision and documenting progress monthly to the court regarding each child assigned to her. Kathleen also taught English as a Second Language for over fifteen years at Southwestern Community College and founded the Osceola Children's Theater after school program. She has volunteered for over thirty years as director of two annual stage productions, which feature elementary school children as actors. In 2006 she received the Osceola Chamber-Main Street and

Osceola Rotary Club Annual Community Service Award for her many hours of volunteer work. Kathleen served over ten years on the Iowa County Attorneys' Standards and Conduct Committee and several terms on the board of directors of the Iowa Magistrate's Association and the Clarke Area Arts Council. She and her husband enjoy spending time with their two daughters and two grandchildren.

**Jackie Romp, Alternate Board Member.** Appointed as an Alternate Member of the Board of Parole in 2013. Jacklyn Van Ekeren Romp is a graduate of Iowa State University with a B.A. in Political Science, and then earned her J.D. from the University of Iowa, College of Law. She is admitted to practice law in Iowa and Illinois. Ms. Romp began her professional career as an attorney with the Chicago-based international law firm McDermott, Will & Emery. She also practiced with the Des Moines firm of Bradshaw, Fowler, Proctor and Fairgrave, and subsequently served as Legal Counsel and Administrative Rules Coordinator for the Office of the Governor of Iowa, and as Vice Chair of the Iowa Board of Parole. Romp received gubernatorial appointments to the Iowa Board of Regents (1985-89), the Iowa Board of Parole (1998-1999), and the Iowa Petroleum Underground Storage Tank Fund Board (1995-97). In her capacity with the Board of Regents, she also served on the Board of Directors of the Iowa State University Achievement Foundation and Iowa Public Television. Romp currently serves as Chair of the Board of Trustees of the Des Moines Public Schools Foundation. Previously, she served on the Board of Directors of the University of Iowa Alumni Association, Terrace Hill Society, Junior League of Des Moines, Iowa Association of Business and Industry, Employee and Family Resources and Friends of CASA (Court Appointed Special Advocates). She is a past member of the Des Moines A.M. Rotary, the Greater Des Moines Leadership Institute, and Leadership Iowa. She is a member of Central Presbyterian Church where she has served on the Foundation, Christian Education Board, and Board of Deacons.

**Gregory B. Crocker, Alternate Board Member.** Appointed as an Alternate Member of the Board of Parole in 2017. Gregory B. Crocker is a graduate of the University of Northern Iowa with a B. A. in public administration. He has a long career in public service in the areas of law enforcement, EMS, Fire Fighter and City Administrator, and is a veteran of the United States Air Force. Mr. Crocker is also a Public Address Announcer for a variety of organizations that include Drum Corps International, Winter Guard International, West Des Moines Valley High School and is one of two of the voices of "Marching Mizzou", the marching band for the University of Missouri. He and his family reside in Central Iowa.

**Sue "Susie" Weinacht, Alternate Board Member.** Appointed as an Alternate Member of the Board of Parole in 2017. Susie is recognized by her community as a leader who makes a difference in the lives of many for the betterment of humanity, and most recently has been awarded Everyday Hero by the Cedar Rapids Gazette, Woman of Achievement in Service to the Community, by Waypoint Services, Community Biggie Award, by Iowa BIG. She believes in life-long learning and her educational background is Harvard University, John F. Kennedy School of Government, Executive Certificate in Public Leadership, Eastern Illinois University, BSc Education & Teaching Certificate, Iowa League of Cities, Certified Elected Official, National League of Cities University, Bronze Certification, Leadership Iowa (Assoc. of Business & Industry), Leadership Certificate, Pacific Institute, Cultural Transformation Certificate, Disney Institute Keys of Excellence, Leadership & Professional Development Certificate, Chamber of Commerce, Leadership Certificate. She has authored several guest columns including "You're Welcome to Join Us" September 2018, the Cedar Rapids Gazette. Our history, our culture, and our future are tied to being inclusive and welcoming. "False-label law can help stop deadly drugs" May 2015, the Des Moines Register. Tackling synthetic drugs from a consumer fraud & protection approach. "Community Investment Now Recreation Destination" September 2018, the Cedar Rapids Gazette. Mt Trashmore: From quarry, to landfill, and now a recreation destination of 70+ acres of walking & biking trails. Susie serves as Mayor Pro Tempore and At-Large City Council Member, Chairs the City Council Public Safety & Youth Services, is a member of the Sixth Judicial District | Iowa Department of Corrections and the Regional Workforce Development Board of Directors.

## Strategic Plan

In October 2017, the Iowa Board of Parole undertook a strategic planning exercise to identify areas of focus for future development of the Board and its members. In August 2019, the Strategic Plan was reviewed again based on additional insight and information gathered since the implementation of this plan.

### Training and Professional Development

- Utilize the collective wisdom and resources of the Association of Paroling Authorities International (APAI), including participation in the annual training conference and other nationally recognized paroling/corrections associations.
- Participate in facility and field location visits to gain better understand operations and facilitate open and active communication across agency boundaries.
- Review intervention programs utilized in Iowa and similar states and explore if those programs would be beneficial to our offender population.
- Utilize a current compilation of intervention programs that include their primary area of focus.
- Continue the practice, when feasible, of including an educational component in each business meeting to learn about and remain up to date on current practices, research, data, and legislation that affects paroling activities.

### Analysis and Data Sophistication in Conjunction with Department of Corrections

- Research and evaluate recidivism rates and identify patterns.
- Research and evaluate revocation activity to identify patterns.
- Evaluate and continue to develop evidence-based policies and practices.

### Stakeholder and Public Outreach

- Enhance and maintain the Board's website for purposes of providing accessibility to information pertaining to Board operations, meetings, and schedules.
- Enhance partnership with Department of Corrections policy makers.
- Enhance partnership with the Community Based Corrections system.
- Enhance the notification system for registered victims.
- Assist the Governor, when requested, to collect and make recommendations for clemency and commutation of offender sentences.

### Population Review Program in Conjunction with Department of Corrections

- Develop and enhance the Board's methods for identifying cases and target populations to review via periodic internal reviews of the prison population.
- Review candidates at the appropriate time for release consideration.
- Research and evaluate alternatives to traditional revocation.



## **Parole Risk Assessment Tools**

The Board adopted the Iowa Violence and Victimization Instrument (IVVI) as its primary static risk assessment tool for non-sex offenders in December of 2012. The risk assessment was created by the Iowa Department of Corrections, at the request of the Board, to replace long-standing and aging risk assessments. The assessment's main use is to aid the Board in measuring the potential for reoffending. Validation data for the prior risk assessment tool, the Iowa Parole Risk Assessment, was included in prior annual reports and can be obtained by contacting the Board of Parole.

The Board continued to utilize the Iowa Sex Offender Risk Assessment (ISORA) and the Static-99 for sex offender specific risk calculation.

The IDOC has developed a new dynamic risk assessment tool called the Dynamic Risk Assessment for Offender Reentry – Institution (DRAOR – Institution) for use in case planning. Early data suggests this tool can also be utilized at the release decision making stage by the Board. This must be confirmed via a validation process before it can be adopted for use by the Board.

## **Iowa Corrections Offender Network (ICON)**

On August 26, 2013, the Iowa Corrections Offender Network (ICON) Board of Parole case review module was deployed. This deployment changed the way the Board handled information gathering, filing, file review and voting. This module made it possible for the Board and the Iowa Department of Corrections to share information on a real-time basis and has increased Board workflow and efficiency.

Since the development of the original module, the Board has added a revocation module. In addition, the Board and IDOC collaborated to develop and implement a centralized Victim Registration Module.

Future ICON development will include an Executive Clemency and Commutation module and full digitization of existing paper files for use within ICON.

## **Polycom Videoconferencing**

In FY19, the Board conducted 464 remote interviews over the Polycom videoconference system. Utilization of the Polycom system allowed victims from around the state to interact with the Board without necessarily needing to travel to Des Moines in order to participate in a parole hearing. Utilization of Polycom has continued to result in increased efficiency and the redirection of limited resources, which historically would have been used for Board travel to DOC facilities, and towards the development of additional technological improvements and Board training.

## Workload and Decision Statistics Summary

**Workload & Performance Summary:** The Board meets approximately 12 days per month for panel screenings. Panels consist of three Board members, one of which is typically the Chair or Vice-Chair. During these panel days the Board conducts case screenings, interviews, appeal reviews, and special reviews. The incorporation of ICON into the daily screening process has helped the Board to complete a large workload in an efficient and timely manner. The Board has had an increase of the number of deliberations, the number of release decisions issued, and the number of parole revocation hearings. With the automation of our operations, added time is required for each hearing in order to review each case in its entirety. A complete breakdown of the Board's workload for FY19 can be found below.

WORKLOAD & PERFORMANCE SUMMARY			
	FY2017	FY2018	FY2019
<b>DELIBERATIONS</b>			
Case Reviews	11,828	12,134	12,921
Interviews	392	365	464
<b>TOTAL DELIBERATIONS</b>	<b>12,220</b>	<b>12,499</b>	<b>13,385</b>
<b>RELEASE DECISIONS</b>			
Paroles Granted	4,073	3,954	4,527
Work Release Granted	1,872	1,722	1,986
Special Sentence Granted <sup>2</sup>	447	555	515
Denial of Release	4,453	4,694	4,670
<b>TOTAL RELEASE DECISIONS</b>	<b>10,845</b>	<b>10,925</b>	<b>11,698</b>
<b>PAROLE REVOCATIONS</b>			
<b>PAROLE REVOCATION HEARINGS</b>	<b>2,613</b>	<b>3,068</b>	<b>3,474</b>
Parole Revoked to Prison <sup>3</sup>	754	858	928
Automatic Revocations	309	300	389
Parole Revoked to Work Release	545	591	554
Paroles Revoked <sup>4</sup>	1,421	1,563	1,590
<b>TOTAL PAROLES REVOKED</b>	<b>1,730</b>	<b>1,863</b>	<b>1,979</b>
<b>SPECIAL REVIEW DECISIONS</b>			
Amend Decision	298	310	394
Paroles Rescinded	182	166	191
Work Release Rescinded	75	134	166
Special Sentence Rescinded	6	12	23
Deny Special Review	28	33	41
<b>TOTAL SPECIAL REVIEW DECISIONS</b>	<b>589</b>	<b>655</b>	<b>815</b>

<sup>2</sup> Commencement of a Special Sentence is non-discretionary. Iowa Code Chapter 903B mandates the special parole supervision sentence begin at the discharge of a qualifying sex offense.

<sup>3</sup> Does not include Automatic Revocations

<sup>4</sup> Includes revoking parole to work release, and revoke and discharge parole and does not include automatic-revocation

## WORKLOAD & PERFORMANCE SUMMARY

FY2017      FY2018      FY2019

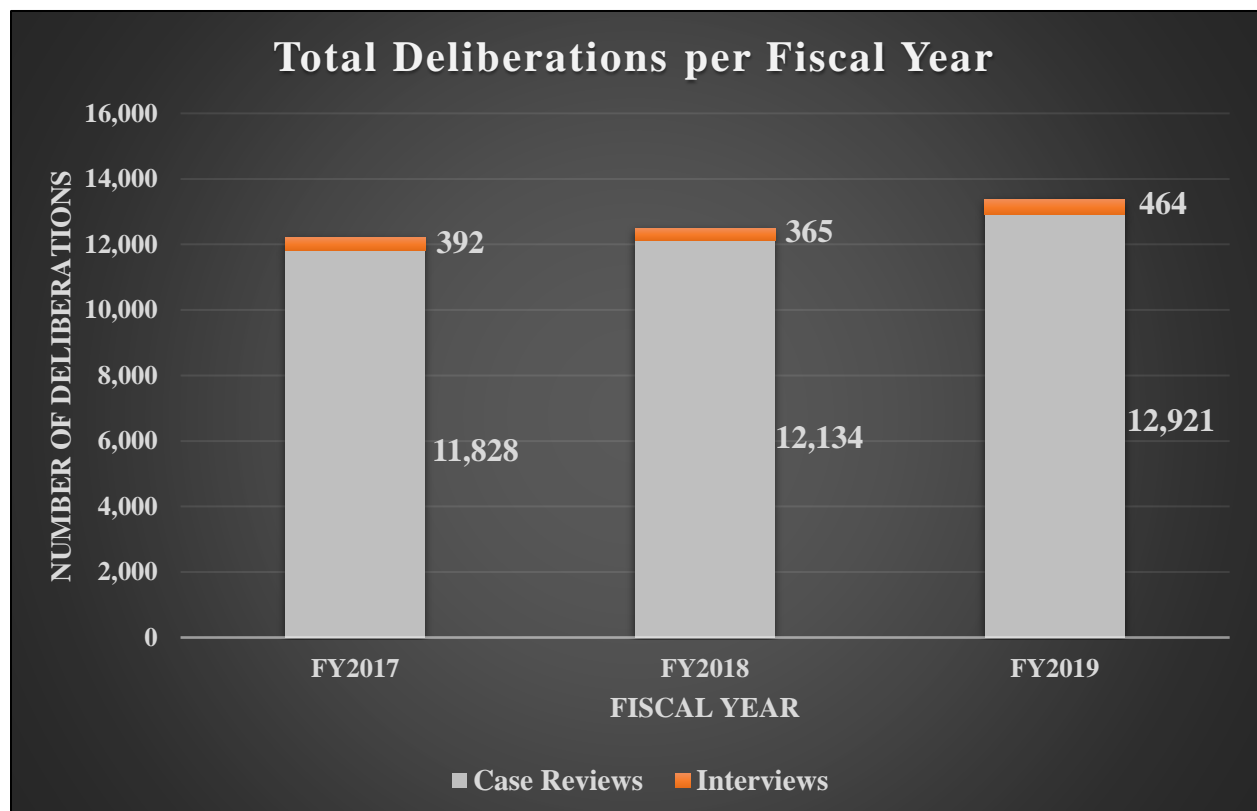
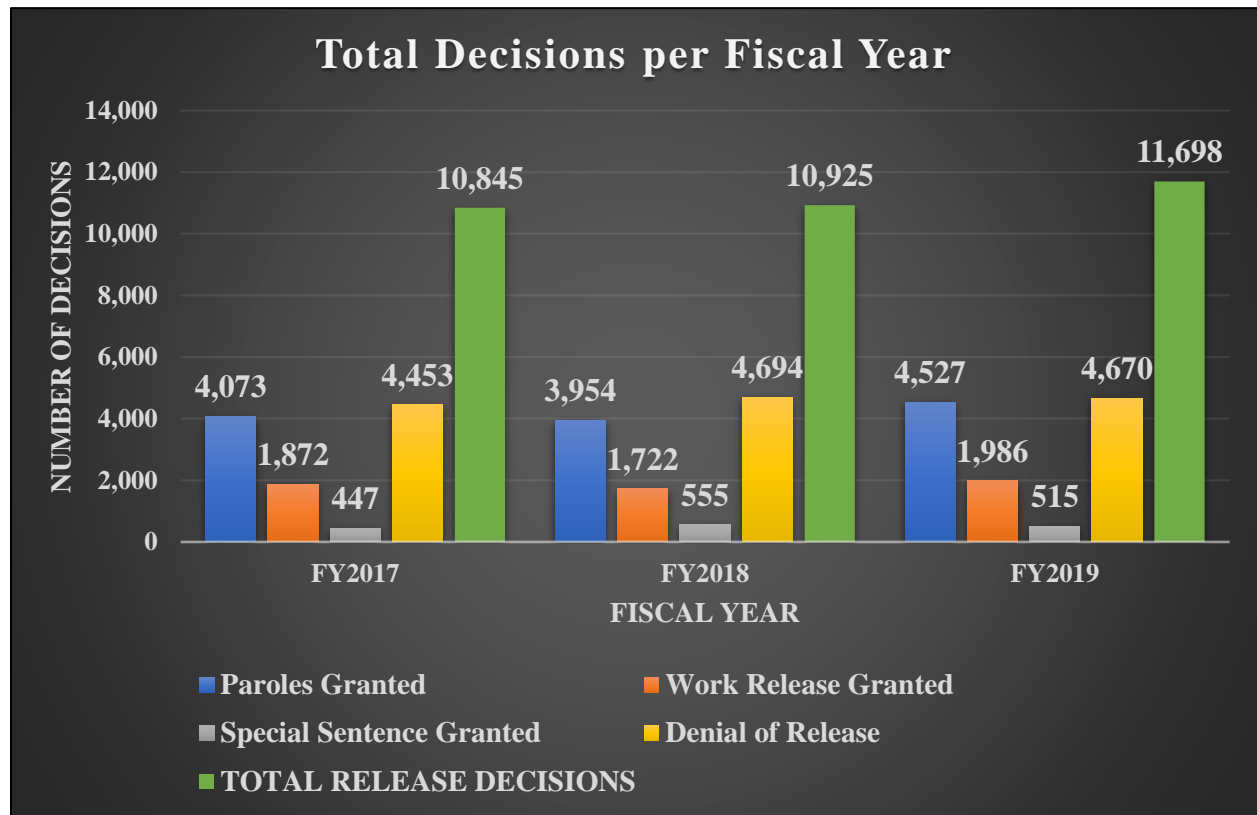
<b>APPEAL DECISIONS</b>			
Appeal with Modification	11	8	25
Appeal Denied	529	671	567
<b>TOTAL APPEAL DECISIONS</b>	<b>540</b>	<b>679</b>	<b>592</b>
<b>EXECUTIVE CLEMENCY</b>			
COMMUTATION OF SENTENCE <sup>5</sup>	3	1	13
Commutations Recommended	0	0	0
PARDON <sup>6</sup>	12	7	7
Pardons Recommended	10	4	5
SPECIAL RESTORATION OF CITIZENSHIP RIGHTS <sup>7</sup>	15	6	12
Special Restorations Recommended	13	4	10
<b>OTHER BOARD WORK</b>			
Risk Assessments Completed	5,546	4,972	4,816
Registered Victims at Year end	5,823	6,067	6,337
Victim Notices: Decision Letters	3,160	3,117	3,633
Victim Notices: Interview Letters	598	538	772
Victim Registration Letters	2,873	1,700	2,318

<sup>5</sup> Number of commutation applications that were referred to the Office of the Governor following an investigation by the Board of Parole.

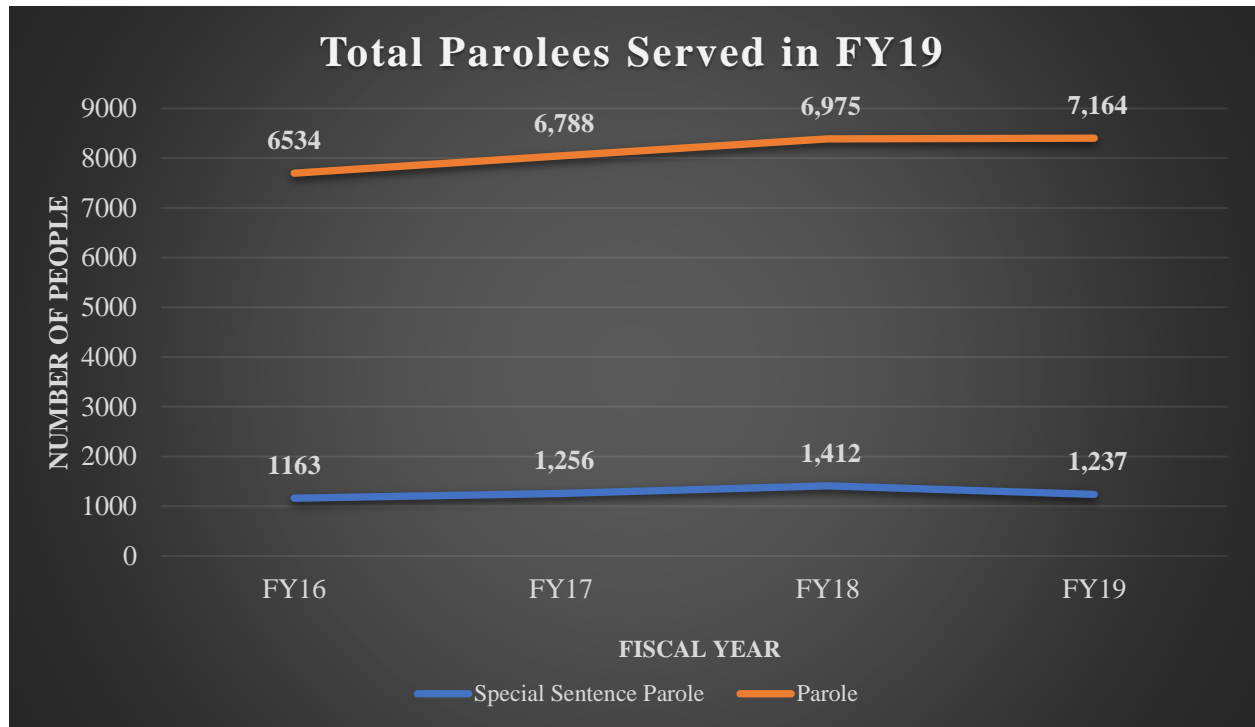
<sup>6</sup> Number of pardon applications that were referred to the Office of the Governor following review by Iowa Division of Criminal Investigations.

<sup>7</sup> Number of special restoration of citizenship rights applications that were referred to the Office of the Governor following review by Iowa Division of Criminal Investigations.

## Graphs of Board's Workload



## Total number of parolees in FY19



## Recidivism

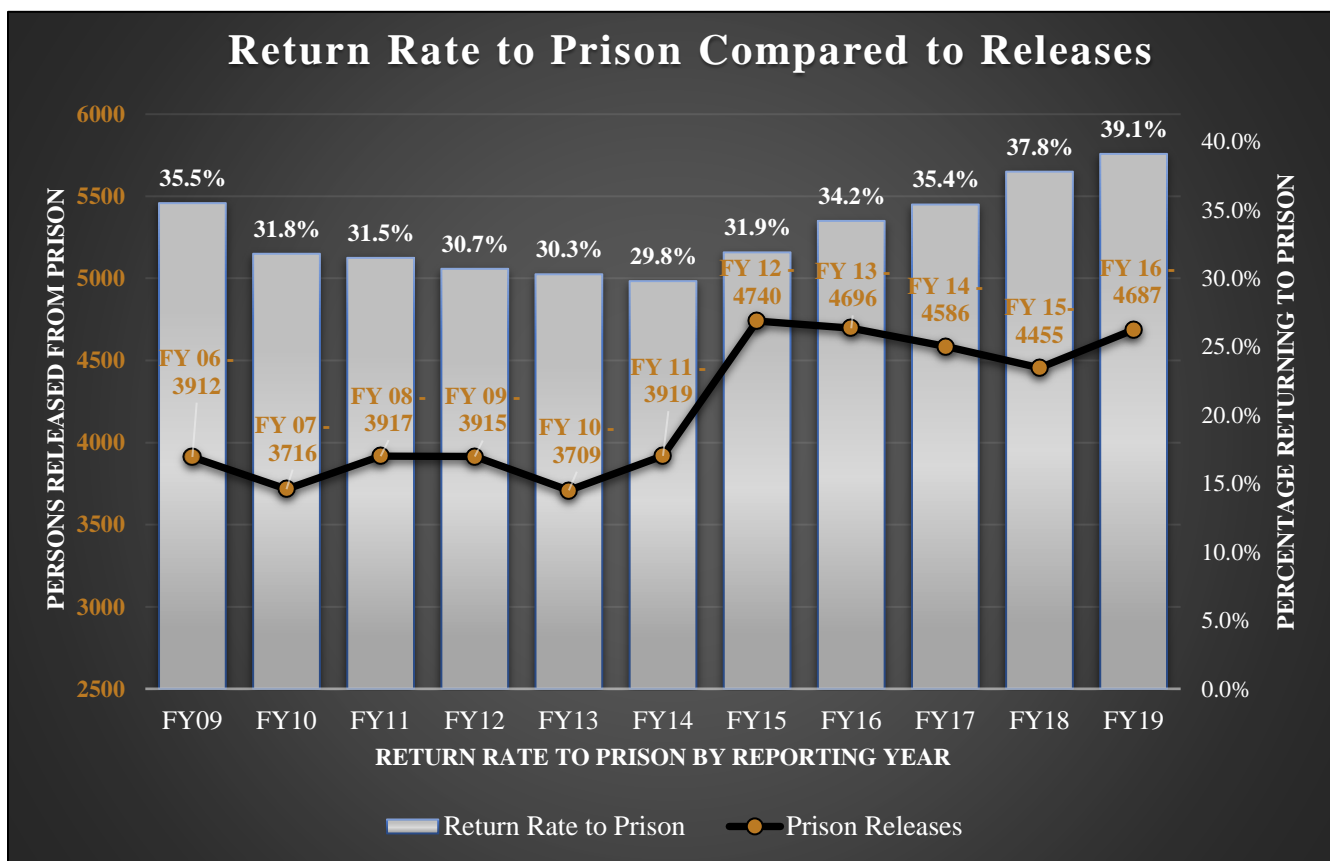
Recidivism definitions and terms used in this Report were developed by The Association of State Correctional Administrators (ASCA) to establish standard performance measures of importance to corrections. All statistical compilations included herein were provided by the Iowa Department of Corrections.

The recidivism rate is the percent of offenders released from prison or work release who returned to prison within three years. The releases tracked are parole, discharges due to end of sentence, and sex offender releases to special sentence supervision.

The recidivism rate may be further defined by the reason for the prison return: new convictions with sentences to prison; and technical returns (all other reasons).

The recidivism reporting year is the conclusion of the three-year tracking period for a release group. In other words, reporting year FY2019 describes recidivism for offenders who left prison in FY16.

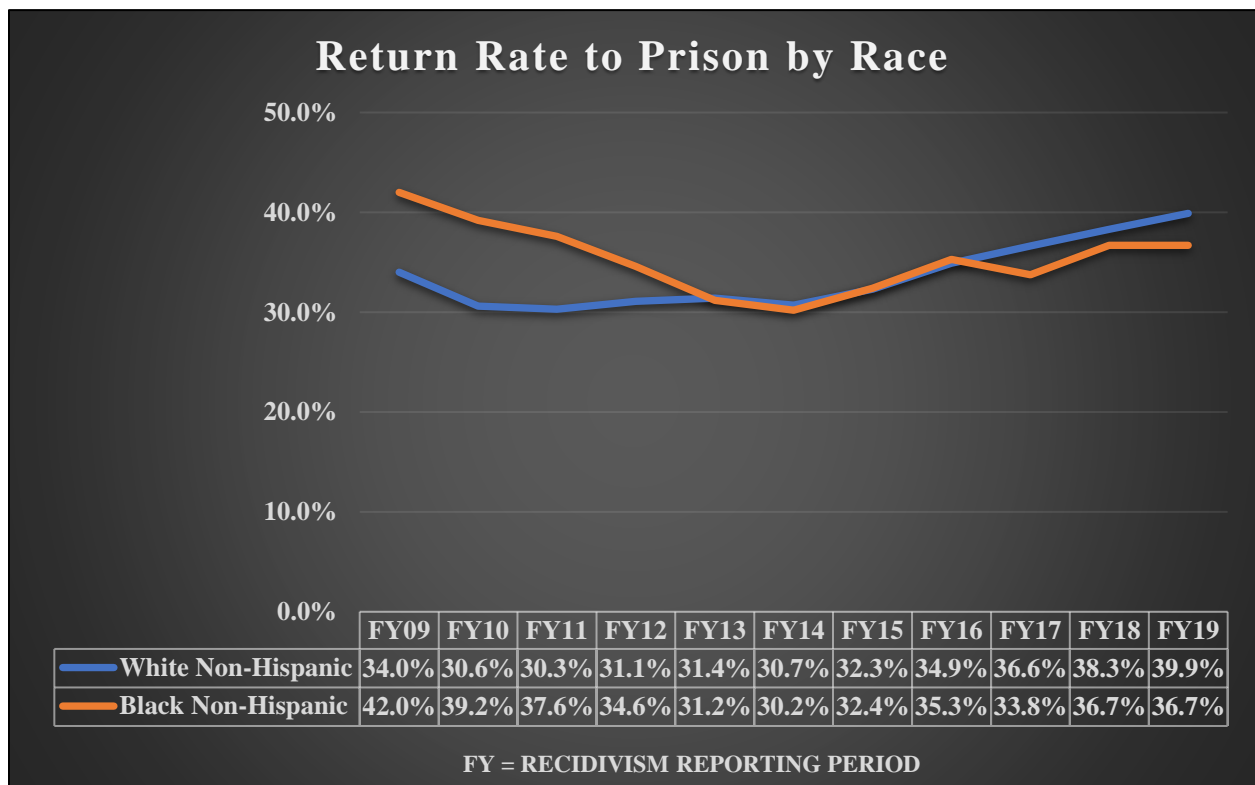
The recidivism rate for FY19 was 39.1%.



	Recidivism	Releases <sup>8</sup>
FY09	35.5%	3912
FY10	31.8%	3716
FY11	31.5%	3917
FY12	30.7%	3915
FY13	30.3%	3709
FY14	29.8%	3919
FY15	31.9%	4740
FY16	34.2%	4696
FY17	35.4%	4586
FY18	37.8%	4455
FY19	39.1%	4687

## Recidivism and Race

In previous years, there was a pronounced difference in the recidivism rates between White Non-Hispanic and African-American Non-Hispanic individuals. In FY09, reentry efforts that focused specifically on African-American offender recidivism began, which led to a diminishing difference in return rate to prison between the two groups. Beginning in FY17, African-American recidivism rates dropped below the return rate to prison for White Non-Hispanic offenders, with the trend continuing through FY19.



<sup>8</sup> Releases occurred three years prior to the reporting year (i.e FY19 recidivism is comprised of FY16's releases)

## Parole Revocations

The parole revocation process begins with the receipt of a parole officer's violation report. The alleged violator is subsequently notified to appear before an Administrative Law Judge (ALJ) for a Parole Revocation Hearing. The ALJ determines whether or not the parolee is in violation of the terms of the parole agreement. If the ALJ finds that a parole violation has occurred, one of the following sanctions may be imposed:

- Re-instatement of parole
- Re-instatement of parole with additional conditions imposed (for example, but not limited to, substance abuse evaluation, GPS monitoring, intensive parole supervision, referral to an appropriate treatment program)
- Revocation of parole to a work release program
- Revocation of parole and return to prison

Pursuant to Iowa Code Sections 908.10 and 908.10A, Board ALJs do not hear cases involving parolees sentenced to prison for new felonies or aggravated misdemeanors. In these instances, the parole is deemed revoked as of the date of the commission of the new offense. Although no hearing is conducted for an automatic revocation, an ALJ is required to process the revocation order and notify the parolee of the revocation.

### Parole Revocation Statistics

A total of 1,979 paroles were revoked in FY19. This number includes sex offenders who are subject to special sentence supervision pursuant to Iowa Code Chapter 903B.

<b>PAROLE REVOCATION HEARINGS</b>	<b>3,474</b>
<b>Parole Revoked to Prison<sup>9</sup></b>	928
<b>Automatic Revocations</b>	389
<b>Parole Revoked to Work Release</b>	554
<b>Paroles Revoked<sup>10</sup></b>	1,590
<b>TOTAL PAROLES REVOKED</b>	<b>1,979</b>

---

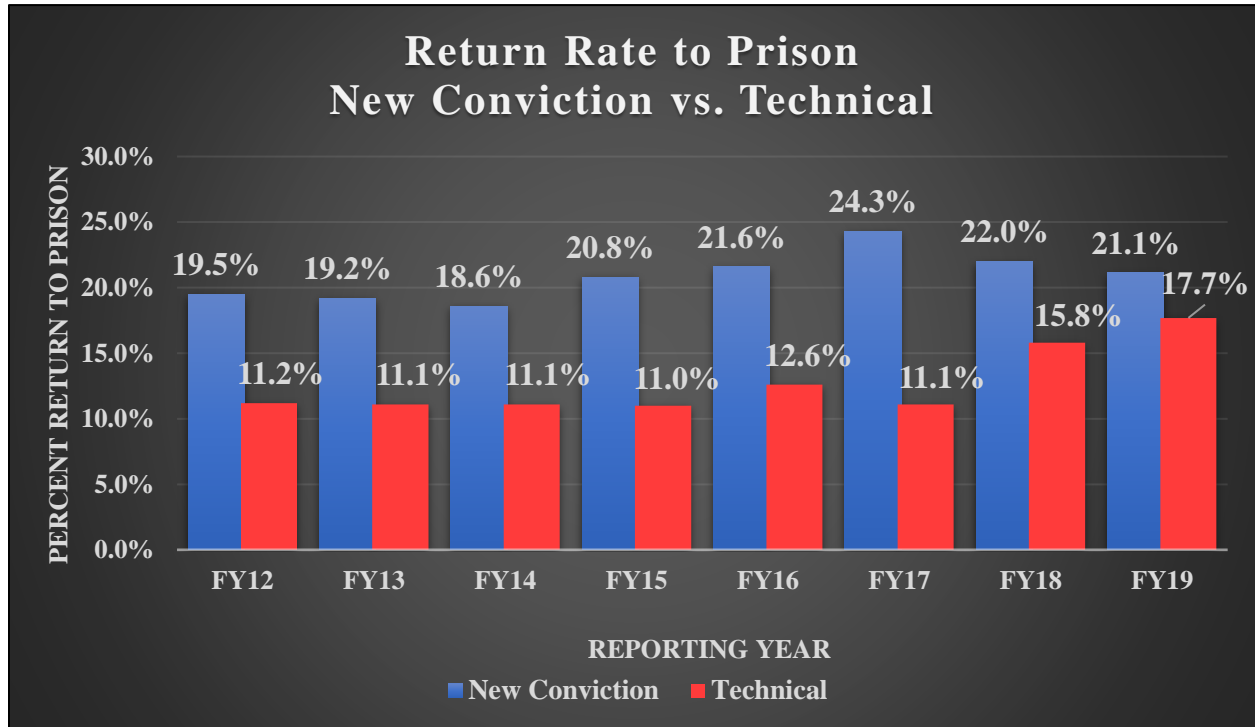
<sup>9</sup> Does not include Automatic Revocations

<sup>10</sup> Includes revoking parole to work release, and revoke and discharge parole.



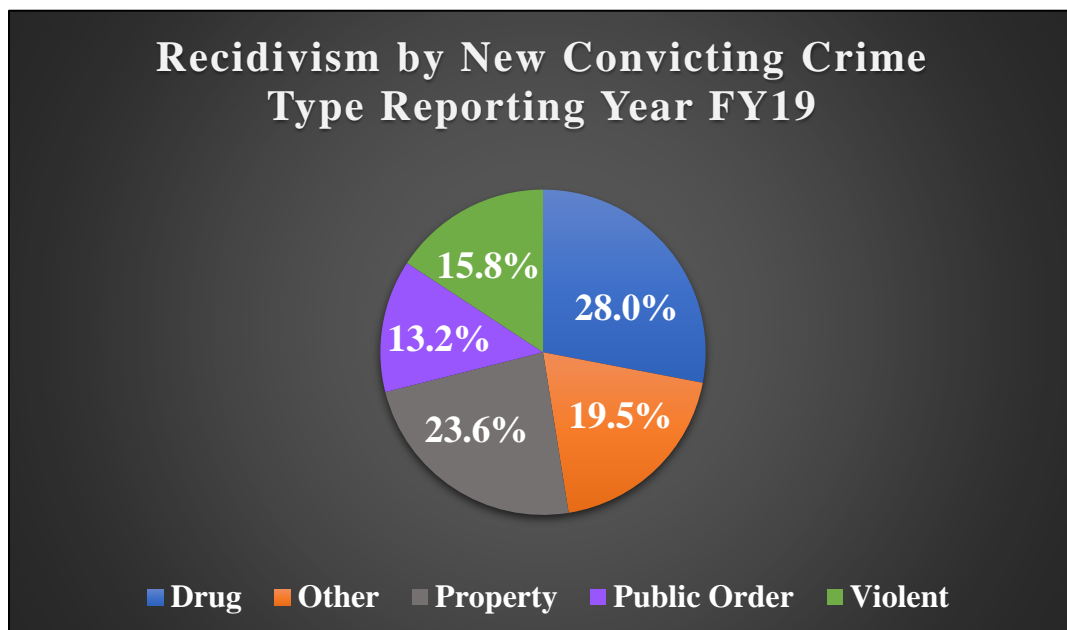
## Recidivism by Reason for Return (New Conviction vs. Technical)

This section demonstrates the reason for recidivism in a given fiscal year. The data is for FY19 (individuals released in FY16).



## Breakdown of New Charges Resulting in Return to Prison for FY19

The below graph displays the breakdown of new convictions resulting in return to prison for reporting year FY19 (see graph above). Individuals reflected in FY19 data are people released from prison in FY16 with new convictions occurring at any time between then and FY19.



## Community Success Program

In September 2018 the Board of Parole launched a diversion program for parolees in the community facing revocation of their parole status. The purpose of the Community Success Program (CSP) is to invite parolees to prevent returns to prison by engaging parolees in a process of changing their behavior.

The goals of CSP are to partner with the parolee and parole officer to accomplish these objectives:

- assist the parolee in setting goals;
- help the parolee identify barriers to reaching their goals;
- assist the parolee in identifying resources to assist them in achieving their goals;
- encourage the parolee to build a network of positive support; and
- offer periodic review of a parolee's progress toward goals.

CSP is administered by one Board of Parole, Administrative Law Judge. The program is administered statewide and periodic reviews are conducted in person or via phone or video conferencing depending on the location of the parolee and parole officer.

Thirty-four parolees began the program in FY19; in that same period, 187 reviews with parolees and their parole officers were conducted as part of CSP. There were eleven individuals who exited the program in FY19; the breakdown can be seen in the graph below. As of June 30, 2019, twenty-three parolees were actively involved in the Community Success Program.

Successful Completion of Program	
Discharged Sentence While Under CSP	2
Continued on Parole without Revocation	2

Unsuccessful Completion of Program	
Revoked to Work Release	1
Revoked to Prison	6

## Victim Services

The Board recognizes the special place that victims occupy as unwilling participants in our criminal justice system. Victims can provide crucial insight into the crimes committed against them by individuals that the Board considers for discretionary release.

Recognizing the status held by victims within our criminal justice system and the unparalleled insight such individuals can provide, the Board established its first program for victim participation in 1986. As part of this program the position of Victim Coordinator was added to the Board's staff. Today, the Victim Coordinator's primary responsibility is to assist victims who want to exercise the following rights established by the Iowa Victim Rights Act, Iowa Code Chapter 915:

- Notify victims of violent crimes, not less than twenty days prior to the Board conducting a hearing at which the offender will be interviewed, and inform the victim that they may submit their opinion concerning the release of the offender in writing prior to the hearing or may appear personally or by counsel at the hearing to express an opinion concerning the offender's release.
- Notify the victim, whether or not the victim appears at the hearing or expresses an opinion, of the Board's decision regarding release of the offender.

The Board continues to register victims of violent offenses. The ICON victim module, merging DOC and BOP victim records, was completed in FY16 and has helped make this process much more accurate and efficient.

At the end of FY19 a total of 6,337 victims were registered with the Board of Parole. The Board mailed a total of 3,633 victim notifications during FY19. Please see the Workload & Performance Summary on page 12 of this Report for more information.

## Appendix A – Summary of Time Served Prior to Parole, Work Release, Special Sentence, EOS in FY19

Charge and Criminal Code		# with Consec Charges	# of Offenders Released	Avg Months Served	Min Months Served	Max Months Served
<b>A Felony</b>		<b>0</b>	<b>1</b>	<b>335.0</b>	<b>335.0</b>	<b>335.0</b>
MURDER 1ST DEGREE	690.2	0	1	335.0	335.0	335.0
<b>B Felony</b>		<b>45</b>	<b>130</b>	<b>86.9</b>	<b>3.2</b>	<b>378.3</b>
ARSON 1ST DEGREE	712.2	0	4	50.0	35.8	72.5
ATTEMPT TO COMMIT MURDER	707.11	2	2	289.4	200.4	378.3
ATTEMPTED MURDER - 85%	707.11	4	8	214.7	200.1	221.5
BURGLARY - 1ST DEGREE WITH SEX ABUSE	713.3(1D)	1	2	134.4	89.6	179.1
BURGLARY 1ST DEGREE	713.2	1	1	216.0	216.0	216.0
BURGLARY 1ST DEGREE	713.3	6	18	74.6	12.4	113.9
CHILD ENDANGERMENT RESULTING IN DEATH	726.6(4)	0	1	132.3	132.3	132.3
Dist/Poss w/Int to Dist Sched I, II to Persons Under 18 - Mandatory Min 5 yrs	124.406(1A)	0	2	61.9	26.1	97.7
MURDER - 2ND DEGREE, 85%	707.3	0	1	170.3	170.3	170.3
MURDER 2ND - 85%	707.3	0	1	188.4	188.4	188.4
Ongoing Criminal Conduct - Criminal Network	706A.2(2)	1	2	26.1	3.2	49.0
Ongoing Criminal Conduct-Unlawful Activity	706A.2(4)	3	5	15.3	5.8	26.8
Proh Acts-Mfg, Del, Consp or Poss w/Int-Cocaine GT 5gm but LT 50 gm	124.401(1)(b)(3)	1	2	59.9	27.8	92.1

Charge and Criminal Code		# with Consec Charges	# of Offenders Released	Avg Months Served	Min Months Served	Max Months Served
Proh Acts-Mfg, Del, Consp or Poss w/Int-Cocaine more than 100 gm and less than 500 gms.	124.401(1)(b)(2)(b)	0	1	23.1	23.1	23.1
Proh Acts-Mfg, Del, Consp or Poss w/Int-LSD LT 10gm	124.401(1)(b)(5)	1	1	19.8	19.8	19.8
Proh Acts-Mfg, Del, Consp or Poss w/Int-Meth GT 5gm but LT 5kg	124.401(1)(b)(7)	19	45	27.8	4.5	145.0
Proh Acts-Mfg, Del, Consp or Poss w/Int-Meth GT 5kg	124.401(1)(a)(2)(d)	0	1	32.5	32.5	32.5
Proh Acts-Mfg, Del, Consp, or Poss w/Int	124.401(1A)	1	2	21.8	21.0	22.7
ROBBERY - 1ST DEGREE - 85%	711.2	3	10	216.5	196.3	257.3
ROBBERY 1ST DEGREE	711.2	0	2	207.9	206.8	208.9
ROBBERY 1ST DEGREE, 85%	711.2	0	2	60.9	36.7	85.1
SEXUAL ABUSE - 2ND DEGREE - 85%	709.3	0	4	230.4	219.8	243.8
SEXUAL ABUSE 2ND DEGREE	709.3	0	1	211.3	211.3	211.3
SEXUAL ABUSE, 2ND DEGREE, 85%	709.3	0	1	199.5	199.5	199.5
VEH. HOMICIDE/OWI 321J.2	707.6A(1)	1	8	70.8	30.4	107.6
VIOLATION OF 706A.2 - ONGOING CRIMINAL CONDUCT	706A.4	1	3	44.8	5.5	111.2
<b>C Felony</b>		<b>401</b>	<b>851</b>	<b>26.6</b>	<b>0.1</b>	<b>196.0</b>
AIDING & ABETTING	703.1,A	1	1	11.6	11.6	11.6
ARSON 2ND DEGREE	712.3	4	15	25.3	11.9	70.7
ATTEMPT BURGLARY 1ST DEGREE	713.4	1	1	31.1	31.1	31.1
BURGLARY 2ND DEGREE	713.5	50	112	19.8	4.6	112.2
Child Endangerment-Serious Injury	726.6(5)	0	3	46.7	43.1	53.4

<b>Charge and Criminal Code</b>		<b># with Consec Charges</b>	<b># of Offenders Released</b>	<b>Avg Months Served</b>	<b>Min Months Served</b>	<b>Max Months Served</b>
CONSPIRACY/COMMIT FORC FELONY	706.3,A	7	13	20.8	6.9	48.5
Conspiracy/Commit Forcible Felony	706.1,A	3	4	32.9	11.7	83.0
CONSPIRE, RECRUIT PERSON UNDER 18 TO DEL, MFG SCHED I, II, III, IV	124.406A	0	1	18.8	18.8	18.8
CRIMINAL MISCHIEF 1ST DEGREE	716.3	5	7	21.9	8.7	61.9
DEPENDANT ADULT ABUSE - INTENTIONAL PHYSICAL INJURY	235B.20(4)	0	1	24.4	24.4	24.4
ENTICING AWAY A MINOR	710.10(1)	0	1	42.3	42.3	42.3
FRAUDULENT PRACTICE 1ST DEGREE	714.9	2	2	7.9	5.4	10.4
INTIMIDATION WITH A DANGEROUS WEAPON	708.6(1)	18	28	36.6	11.8	120.6
Intimidation with Dangerous Weapon-Intent (Non-Forcible)	708.6	1	2	14.0	11.7	16.3
KIDNAPPING 3RD DEGREE	710.4	3	5	58.4	19.7	141.6
Lascivious Acts With A Child - Life Special Sentence	709.8(1)	11	27	57.6	24.7	109.7
Lascivious Acts With Child-Life Special Sentence	709.8(2)	1	5	58.6	40.3	90.7
NEGLECT OR ABANDONMENT	726.3	10	14	18.9	6.1	61.0
NON-CONSENSUAL TERMINATION OF HUMAN PREGNANCY	707.8(2)	0	1	16.1	16.1	16.1
POSS. CONTRABAND IN CORR. FACILITY - WEAPON	719.7(4A)	0	1	7.0	7.0	7.0
Proh Acts-Mfg, Del, Consp or Poss w/Int-Cocaine LT 40gm	124.401(1)(c)(3)	2	4	11.0	7.2	15.6

<b>Charge and Criminal Code</b>		<b># with Consec Charges</b>	<b># of Offenders Released</b>	<b>Avg Months Served</b>	<b>Min Months Served</b>	<b>Max Months Served</b>
Proh Acts-Mfg, Del, Consp or Poss w/Int-Cocaine LT 500gm	124.401(1)(c)(2)(b)	<b>4</b>	<b>9</b>	<b>10.3</b>	<b>4.8</b>	<b>18.2</b>
Proh Acts-Mfg, Del, Consp or Poss w/Int-Cocaine LT 5gm	124.401(1)(c)(3)	<b>0</b>	<b>2</b>	<b>9.7</b>	<b>7.5</b>	<b>11.9</b>
Proh Acts-Mfg, Del, Consp or Poss w/Int-Heroin LT 100gm	124.401(1)(c)(1)	<b>3</b>	<b>7</b>	<b>9.1</b>	<b>3.3</b>	<b>16.8</b>
Proh Acts-Mfg, Del, Consp or Poss w/Int-Marij GT 50kg but LT 100kg	124.401(1)(c)(5)	<b>0</b>	<b>2</b>	<b>10.4</b>	<b>9.0</b>	<b>11.8</b>
Proh Acts-Mfg, Del, Consp or Poss w/Int-Other Cont Subst LT 500 gm	124.401(1)(c)(2)(d)	<b>2</b>	<b>2</b>	<b>9.3</b>	<b>4.2</b>	<b>14.4</b>
Proh Acts-Mfg, Del, Consp, or Poss w/Int	124.401(1C)	<b>1</b>	<b>1</b>	<b>14.2</b>	<b>14.2</b>	<b>14.2</b>
Proh Acts-Mfg, Del, Consp, or Poss w/Int-Amph LT 5 gm	124.401(1)(c)(7)	<b>1</b>	<b>7</b>	<b>14.8</b>	<b>4.5</b>	<b>32.6</b>
Proh Acts-Mfg, Del, Consp, or Poss w/Int-Meth LT 5 gm	124.401(1)(c)(6)	<b>114</b>	<b>263</b>	<b>12.1</b>	<b>0.1</b>	<b>50.8</b>
Proh Acts-Mfg, Del, Consp, or Poss w/Int-Other Subst Sched I, II, III	124.401(1)(c)(8)	<b>9</b>	<b>18</b>	<b>12.3</b>	<b>4.9</b>	<b>32.5</b>
Proh. Acts - Mfg, Del, Consp or Poss w/Int. - Cocaine LT 10 gm	124.401(1)(c)(3)	<b>2</b>	<b>8</b>	<b>15.0</b>	<b>5.8</b>	<b>35.9</b>
ROBBERY - 2ND DEGREE - 85%	711.3	<b>0</b>	<b>1</b>	<b>93.9</b>	<b>93.9</b>	<b>93.9</b>
ROBBERY 2ND DEGREE, 85%	711.3	<b>17</b>	<b>32</b>	<b>66.6</b>	<b>12.2</b>	<b>168.3</b>
Sex Abuse 3rd Degree-Life Special Sentence	709.4	<b>12</b>	<b>22</b>	<b>57.0</b>	<b>34.7</b>	<b>106.0</b>
Sex Abuse 3rd/Victim 14/15, Def 4+-Life Special Sentence	709.4(1)(b)(3)(d)	<b>1</b>	<b>6</b>	<b>46.0</b>	<b>29.9</b>	<b>59.3</b>
Sex Abuse 3rd/Victim 14/15, Family Perp-Life Special Sentence	709.4(1)(b)(3)(b)	<b>0</b>	<b>1</b>	<b>23.2</b>	<b>23.2</b>	<b>23.2</b>
Sex Abuse 3rd-By Force, 1st Off-Life Special Sentence	709.4(1)(a)	<b>1</b>	<b>1</b>	<b>17.1</b>	<b>17.1</b>	<b>17.1</b>

Charge and Criminal Code		# with Consec Charges	# of Offenders Released	Avg Months Served	Min Months Served	Max Months Served
Sex Abuse-3rd, Spouse or Cohabitant-Life Special Sentence	709.4(1)	3	3	49.2	11.5	108.2
Sex Offender Registration Violation - 2nd offense or subsequent	692A.111	0	2	42.3	30.4	54.1
SEXUAL ABUSE 3RD - NOT FORCIBLE FELONY	709.4(2C,4)	2	2	114.8	70.4	159.3
SEXUAL ABUSE 3RD DEGREE	709.4	5	5	174.5	153.1	196.0
Sexual Abuse 3rd Degree/Life Special Sentence.	709.4(2C,4)	6	23	48.1	11.5	112.9
Sexual Abuse-3rd/Victim 12 or 13 Yrs Old-Life Supervision	709.4(2)(b)	2	9	52.9	29.2	93.6
STOLEN FIREARM 2ND OF. OR USED IT	724.16A,2	1	1	14.8	14.8	14.8
THEFT 1ST DEGREE	714.2(1)	60	117	20.9	3.6	86.1
TRAFFICKING IN STOLEN WEAPON, 2ND OFF./USE	724.16A-B	0	1	16.6	16.6	16.6
UNAUTH. USE OF CREDIT CARD ) \$10K	715A.6(2)(A)	0	3	8.8	7.0	11.8
UNLAWFUL POSS. EXPLOSIVES	101A.14(1)	0	1	4.6	4.6	4.6
USING A JUVENILE TO COMMIT AN INDICTABLE OFFENSE	709A.6	0	1	12.2	12.2	12.2
VEH. HOMICIDE/U-INF. OR RECKLESS	707.6A(1)	0	1	37.9	37.9	37.9
VEH. HOMICIDE/U-INF. OR RECKLESS	707.6A(2)	3	7	39.6	24.2	79.0
VOLUNTARY MANSLAUGHTER	707.4	8	11	72.1	16.2	186.7
WILLFUL INJURY	708.4	0	2	14.2	13.3	15.2
WILLFUL INJURY - CAUSING SERIOUS INJURY	708.4(1)	25	32	46.5	8.9	108.5
<b>D Felony</b>		<b>724</b>	<b>1591</b>	<b>12.7</b>	<b>0.0</b>	<b>75.9</b>
AIDING AND ABETTING	703.1,B	0	1	11.0	11.0	11.0



Charge and Criminal Code		# with Consec Charges	# of Offenders Released	Avg Months Served	Min Months Served	Max Months Served
ASSAULT - SERIOUS INJURY	708.2(4)	9	17	18.4	10.7	42.2
ASSAULT INTENT OF INJURY PEACE OFFICER/OTHERS	708.3A(1)	1	3	13.7	7.8	23.4
Assault with weapon, no serious injury	708.3	0	1	5.1	5.1	5.1
ASSAULT WITH WEAPON--PEACE OFFICERS/OTHERS	708.3A(2)	2	4	13.2	8.1	18.3
ASSLT WHILE PARTIC. IN FELONY	708.3,B	1	4	15.3	9.2	22.1
Asslt. to Commit Sex Abuse/Bodily Inj.-10 Yr Special Sent.	709.11(2)	3	7	23.6	11.5	29.1
ATTEMPTED BURGLARY 2ND DEGREE	713.6	3	7	16.8	10.3	35.0
BURGLARY 3RD DEGREE	713.6A	133	257	14.3	0.0	53.9
Burglary 3rd Degree-Motor Vehicle-2nd or Subseq	713.6A(2)	2	3	10.6	5.7	17.3
Child Endangerment - Meth Exposure	726.6(6)-B	1	1	30.1	30.1	30.1
Child Endangerment Resulting in Bodily Injury	726.6(2A)	0	1	12.9	12.9	12.9
CHILD ENDANGERMENT/ BODILY INJURY	726.6(5)	1	1	15.3	15.3	15.3
Child Endangerment-Bodily Injury	726.6(6)	7	13	19.9	7.4	34.9
CONSPIRACY/COM MIT FELONY (PERSON)	706.3,B	1	1	13.4	13.4	13.4
Conspiracy/Commit Non-Forcible Felony	706.1,B	1	1	12.7	12.7	12.7
CRIMINAL GANG PARTICIPATION	723A.2	1	1	18.4	18.4	18.4
CRIMINAL MISCHIEF 2ND DEGREE	716.4	14	24	15.2	3.2	38.6
DISARMING A PEACE OFFICER	708.13(2),B	1	4	10.7	8.2	13.8
DOMESTIC ABUSE ASSAULT - 3RD OR SUBSEQUENT OFFENSE	708.2A(4)	10	17	22.2	11.9	59.9

<b>Charge and Criminal Code</b>		<b># with Consec Charges</b>	<b># of Offenders Released</b>	<b>Avg Months Served</b>	<b>Min Months Served</b>	<b>Max Months Served</b>
Domestic Abuse Assault Impeding Air/Blood Flow Causing Bodily Injury	708.2A(4A)	<b>0</b>	<b>1</b>	<b>7.8</b>	<b>7.8</b>	<b>7.8</b>
Domestic Abuse Assault Impeding Air/Blood Flow Causing Bodily Injury	708.2A(5)	<b>28</b>	<b>55</b>	<b>18.2</b>	<b>6.4</b>	<b>62.5</b>
Domestic Abuse Assault-3rd or Subsequent Offense, 85%	708.2A(4)	<b>0</b>	<b>10</b>	<b>12.8</b>	<b>8.4</b>	<b>19.2</b>
Dominion/Control of firearm/off weapon by domestic abuse offender	724.26(2)(a)	<b>7</b>	<b>14</b>	<b>12.5</b>	<b>5.2</b>	<b>26.2</b>
Dominion/Control of Firearm/Offensive Weapon by Felon	724.26(1)	<b>12</b>	<b>28</b>	<b>10.6</b>	<b>3.6</b>	<b>24.9</b>
ELUDING	321.279(3)	<b>15</b>	<b>31</b>	<b>10.6</b>	<b>3.6</b>	<b>23.9</b>
Entice Away a Minor	710.10(3)	<b>1</b>	<b>1</b>	<b>33.8</b>	<b>33.8</b>	<b>33.8</b>
ENTICING AWAY A MINOR	710.10(2)	<b>1</b>	<b>5</b>	<b>23.7</b>	<b>9.0</b>	<b>51.0</b>
ESCAPE OF FELON	719.4(1)	<b>2</b>	<b>5</b>	<b>9.8</b>	<b>6.3</b>	<b>14.2</b>
EXTORTION	711.4	<b>0</b>	<b>2</b>	<b>11.4</b>	<b>8.5</b>	<b>14.3</b>
FAILURE TO AFFIX TAX STAMP	453B.12	<b>7</b>	<b>15</b>	<b>8.1</b>	<b>4.3</b>	<b>13.8</b>
FAILURE TO APPEAR FELONY CHG.	811.2(8),A	<b>3</b>	<b>3</b>	<b>13.0</b>	<b>12.0</b>	<b>15.1</b>
FORGERY	715A.2(2)(a)	<b>62</b>	<b>130</b>	<b>10.9</b>	<b>1.8</b>	<b>34.2</b>
FORGERY	715A.2(A)	<b>1</b>	<b>3</b>	<b>15.5</b>	<b>6.4</b>	<b>25.4</b>
FORGERY/IOWA LOTTERY FRAUD	99G.36(1)	<b>1</b>	<b>2</b>	<b>7.7</b>	<b>7.5</b>	<b>7.8</b>
FURN. CONTR. SUBST. TO INMATES	719.8	<b>1</b>	<b>4</b>	<b>9.3</b>	<b>5.6</b>	<b>13.4</b>
FURN. INTOXICANT TO INMATES	719.7	<b>0</b>	<b>1</b>	<b>7.2</b>	<b>7.2</b>	<b>7.2</b>
Gathering For Use of Drugs - Other than Marijuana	124.407,A	<b>3</b>	<b>6</b>	<b>9.5</b>	<b>5.6</b>	<b>16.3</b>
GIVING FALSE INFO/PURCH. WEAPON	724.21	<b>0</b>	<b>1</b>	<b>9.1</b>	<b>9.1</b>	<b>9.1</b>
GOING ARMED WITH INTENT	708.8	<b>9</b>	<b>16</b>	<b>15.5</b>	<b>6.4</b>	<b>37.3</b>

Charge and Criminal Code		# with Consec Charges	# of Offenders Released	Avg Months Served	Min Months Served	Max Months Served
IDENTITY THEFT	715A.8,A	1	1	16.1	16.1	16.1
ILLEGAL INFLUENCE OF GAMBLING GAME	99F.15(4)	1	1	8.2	8.2	8.2
Incest-10 Yr. Special Sentence	726.2	2	3	57.5	24.3	75.9
INMATE ASSAULT ON EMPLOYEE OF CORRECTIONAL FACILITY	708.3B	1	1	38.2	38.2	38.2
Inmate Assault w/Bodily Fluids	708.3B(2)	2	2	17.7	16.5	18.9
INTERFERENCE W/OFFICIAL ACTS, DANGEROUS WEAPON	719.1(1),D	1	1	9.9	9.9	9.9
INTERFERENCE W/OFFICIAL ACTS, SERIOUS INJURY	719.1(1),C	2	2	11.1	9.7	12.5
Interference w/Official Acts-Dangerous Weapon	719.1(1)(e)	2	2	24.6	18.8	30.5
Interference w/Official Acts-Inflict Serious Injury	719.1(1)(f)	3	4	16.5	8.2	25.8
INTIMIDATION WITH A DANGEROUS WEAPON	708.6(2)	6	11	14.7	4.0	26.7
INVOL MANSLS/PUBLIC OFFENSE	707.5(1)	0	3	16.5	14.6	19.6
Lascivious Acts w/Child-Inflict Pain/Discomfort - 10 yr Special Sentence	709.8(1)(e)	0	1	21.3	21.3	21.3
Lascivious Acts w/Child-Solicitation - 10 yr Special Sentence	709.8(1)(d)	4	9	22.5	9.2	38.0
Lascivious Acts With A Child - Solicitation - 10 yr. special sentence	709.8(3)	2	3	33.9	5.8	54.3
LEAVE SCENE OF INJURY/DEATH - TRAFFIC	321.261(4)	0	1	21.1	21.1	21.1
OPER VEH WH INT (OWI)/CLASS D FEL/3RD AND SUBSEQUENT OFF	321J.2(C)	39	151	6.7	0.0	27.9

Charge and Criminal Code		# with Consec Charges	# of Offenders Released	Avg Months Served	Min Months Served	Max Months Served
OPERATING WHILE UNDER THE INFLUENCE 3RD OFFENSE	321J.2(2)(c)	0	7	1.7	0.2	3.1
PERJURY	720.2	0	1	19.0	19.0	19.0
POSSESSION OF A CONTROLLED SUBSTANCE	124.401(5)D	0	1	13.6	13.6	13.6
Possession of a Controlled Substance - 3rd and subsequent	124.401(5)(c)	97	182	10.6	3.1	30.7
POSSESSION OF CONTRABAND - CORRECTIONAL FACILITY	719.7(B)	1	1	7.7	7.7	7.7
Possession of Contraband in Correctional Facility	719.7(4)(b)	1	6	11.3	6.3	15.4
Possession of Contraband in Correctional Institution	719.7(3)(a)	4	11	9.6	4.0	25.2
PRESC. DRUG VIOL (C.S.), 204.401(1B)	155A.24	0	1	20.3	20.3	20.3
Proh Acts-Mfg, Del, Consp or Poss-Marij LT 50 kg	124.401(1)(d)(2)	32	86	10.9	3.5	43.1
Proh Acts-Poss Prod Int for Mfg Cont Subst-Anhydrous Ammonia	124.401(4)(d)	1	1	9.4	9.4	9.4
Proh Acts-Poss Prod Int for Mfg Cont Subst-Pseudoephedrine	124.401(4)(b)	2	8	8.4	4.5	12.6
Proh Acts-Poss Prod Int for Mfg Cont Subst-Red Phosphorous	124.401(4)(e)	1	1	11.3	11.3	11.3
Proh Acts-Poss Prod Int for Mfg Cont Sust-Lithium	124.401(4)(f)	0	1	8.5	8.5	8.5
Proh Acts-Poss Product Intended For Mfg Any Cont Subst	124.401(4)	0	1	8.1	8.1	8.1
Proh. Acts. - Mfg., Del., Consp., or Poss.	124.401(1)(d)	8	17	10.5	3.8	16.4
REC. TRANSP, POS. FIREARM FELON	724.26	18	43	14.1	2.7	55.7

Charge and Criminal Code		# with Consec Charges	# of Offenders Released	Avg Months Served	Min Months Served	Max Months Served
Serious Injury by Vehicle	707.6A(4)	3	11	15.4	6.8	21.7
Sex Offender - Additional Registration Violation - 2nd or subsequent offense	692A.105	1	3	10.4	6.2	18.3
Sex Offender - Registration Violation - 2nd or subsequent offense	692A.111-B	6	19	14.7	6.6	24.3
Sex Offender - Registration Violation 2nd or subsequent offense	692A.104-B	11	20	14.9	3.8	28.3
Sex Offender Residency Violation - 2nd or subsequent	692A.114	1	1	7.7	7.7	7.7
Sex Offender-Verification Viol-2nd or Subsequent	692A.108-B	0	1	9.9	9.9	9.9
Sexual Exploit. By Counselor/Therapist-10 Yr. Special Sent.	709.15(2)(a)	1	1	57.8	57.8	57.8
Sexual Exploit.By School Employee-10 Yr. Special Sentence	709.15(3)(a)	1	2	28.8	19.6	38.1
Sexual Exploitation by School Employee - 10 yr special sentence	709.15(5)(a)	0	2	20.5	18.3	22.8
SPECIAL SENTENCE REVOCATION - 2ND/SUB.	908.5(2)B	0	1	24.0	24.0	24.0
STALKING	708.11(3B)	1	5	14.5	9.5	23.4
Stalking - Violation of Protective Order	708.11(3)(b)(1)	0	4	14.1	12.1	16.8
THEFT 2ND DEGREE	714.2(2)	80	177	11.5	3.6	32.5
THEFT OF IOWA LOTTERY TICKETS	99G.36	0	1	9.8	9.8	9.8
THREAT OF TERRORISM	708A.5	1	1	17.1	17.1	17.1
THREATS	712.8-A	0	1	7.4	7.4	7.4
Threats-Explosive or Incendiary Device	712.8	2	3	23.3	8.7	40.9
TRAFFICKING IN STOLEN WEAPONS	724.16A,1	6	11	14.8	9.7	22.9

Charge and Criminal Code		# with Consec Charges	# of Offenders Released	Avg Months Served	Min Months Served	Max Months Served
UNAUTH. USE OF CREDIT CARD, GREATER THAN \$1K, LESS THAN \$10K	715A.6(2)(B)	7	10	10.8	5.1	20.3
UNAUTH. USE OF CREDIT CARDS	715A.6(A)	0	2	8.4	5.7	11.1
UNAUTHORIZED POSSESSION OF OFFENSIVE WEAPONS	724.3	4	6	14.2	5.7	26.1
WILLFUL INJURY - CAUSING BODILY INJURY	708.4(2)	24	44	19.0	5.5	68.2
<b>Felony - Enhancement to Original Penalty</b>		97	172	26.1	4.2	212.9
Cont Subst-2nd or Subseq-not to exceed 3X Penalty Enh	124.411	17	32	27.0	5.2	77.3
DISTRIBUTING CONTROLLED SUBSTANCE - SCHOOL/PARK (ADD 5 YEARS)	124.401A	1	1	12.0	12.0	12.0
HABITUAL OFFENDER (PERSON)	902.8,A	19	30	50.7	9.1	212.9
HABITUAL OFFENDER (PROPERTY)	902.8,B	56	99	17.5	4.2	42.8
MANUFACTURE METH IN MINORS PRESENCE - PENALTY ENHANCED	124.401C	0	1	14.7	14.7	14.7
Proh Acts-Dist, Poss w/Int to Dist Sched I, II, III-Real Prop-penalty enhanced-add 5 yr	124.401A	1	2	49.8	9.6	90.0
Proh Acts-Firearm Poss/Control-2X Penalty Enh	124.401(1E)	3	7	33.6	4.4	59.8

Charge and Criminal Code		# with Consec Charges	# of Offenders Released	Avg Months Served	Min Months Served	Max Months Served
<b>Felony - Mandatory Minimum</b>		<b>1</b>	<b>1</b>	<b>11.6</b>	<b>11.6</b>	<b>11.6</b>
SEXUAL PREDATOR - COMMUNITY SUPERVISION - Up to 2 Years	901A.2(9)	1	1	11.6	11.6	11.6
<b>Aggravated Misdemeanor</b>		<b>390</b>	<b>833</b>	<b>7.4</b>	<b>0.0</b>	<b>57.2</b>
ACCESSORY TO FELONY	703.3,A	0	1	9.5	9.5	9.5
Aggravated Theft	714.3A(2)(a)	2	6	4.0	2.4	8.3
AIDING & ABETTING	703.1,C	0	1	10.3	10.3	10.3
ALCOHOL CHAPTER 123, 3RD AND SUBSEQUENT	123.91(2)	6	17	6.3	2.9	12.4
ANIMAL ABUSE	717B.2	0	1	6.0	6.0	6.0
ARSON 3RD DEGREE	712.4	2	5	7.2	4.9	8.3
ASSAULT CAUSING INJURY--PEACE OFFICERS/OTHERS	708.3A(3)	9	16	10.1	4.5	28.6
ASSAULT INTENT OF INJURY	708.2(1)	7	11	7.0	2.0	13.2
ASSAULT WHILE DISPLAYING A DANGEROUS WEAPON	708.2(3)	15	34	7.8	0.1	32.0
Asslt. to Commit Sex Abuse/No Inj.-10 Yr. Special Sent.	709.11(3)	3	20	7.1	0.9	18.4
Attempt to Entice Away a Minor	710.10(4)	0	1	4.9	4.9	4.9
ATTEMPTED BURGLARY 3RD DEGREE	713.6B	11	26	7.9	3.5	15.2
Burglary 3rd Degree - Motor Vehicle	713.6A(2)	12	25	9.4	0.0	18.9
CARRYING WEAPONS	724.4	12	28	7.2	2.5	27.4
CHILD ENDANGERMENT	726.6(1)	1	2	4.2	1.9	6.6
Child Endangerment/No Injury	726.6(6)	2	2	11.0	10.5	11.4

<b>Charge and Criminal Code</b>		<b># with Consec Charges</b>	<b># of Offenders Released</b>	<b>Avg Months Served</b>	<b>Min Months Served</b>	<b>Max Months Served</b>
Child Endangerment/No Injury	726.6(7)	<b>5</b>	<b>18</b>	<b>6.8</b>	<b>0.4</b>	<b>13.7</b>
CHILD ENDANGERMENT- Unsupervised Access w/Sex Offender	726.6(7)	<b>1</b>	<b>1</b>	<b>4.7</b>	<b>4.7</b>	<b>4.7</b>
CONSUMPTION/INTOXICATION 3RD OR SUB.	123.46-B	<b>9</b>	<b>18</b>	<b>7.0</b>	<b>1.6</b>	<b>14.3</b>
CRIMINAL MISCHIEF 3RD DEGREE	716.5	<b>12</b>	<b>20</b>	<b>7.4</b>	<b>1.0</b>	<b>13.4</b>
DOMESTIC ABUSE (SUBSEQUENT OFFENSES)	708.2A(3B)	<b>1</b>	<b>4</b>	<b>8.7</b>	<b>3.8</b>	<b>12.1</b>
DOMESTIC ABUSE ASSAULT - 2ND OFFENSE	708.2A(3B)	<b>31</b>	<b>63</b>	<b>8.5</b>	<b>0.4</b>	<b>23.5</b>
Domestic Abuse Assault Impeding Flow of Air/Blood	708.2A(2)(d)	<b>14</b>	<b>32</b>	<b>8.1</b>	<b>1.9</b>	<b>18.3</b>
Domestic Abuse Assault w/Intent to Inflict Ser. Inj.-1st Off.	708.2A(2)(c)	<b>0</b>	<b>3</b>	<b>7.7</b>	<b>6.0</b>	<b>9.5</b>
DOMESTIC ABUSE ASSAULT WITH INTENT OR DISPLAYS A WEAPON	708.2A(2C)	<b>15</b>	<b>26</b>	<b>9.2</b>	<b>4.1</b>	<b>28.8</b>
DRIVING WHILE BARRED - MOTOR VEHICLE	321.561	<b>7</b>	<b>17</b>	<b>7.2</b>	<b>3.5</b>	<b>11.2</b>
Driving While Barred-Habitual Offender	321.561	<b>8</b>	<b>18</b>	<b>6.0</b>	<b>3.0</b>	<b>10.5</b>
ELUDING	321.279(2)	<b>6</b>	<b>9</b>	<b>5.8</b>	<b>3.7</b>	<b>7.7</b>
FORGERY	715A.2(B)	<b>4</b>	<b>9</b>	<b>5.3</b>	<b>2.6</b>	<b>8.5</b>
FRAUDULENT PRACTICE 3RD DEGREE	714.11	<b>0</b>	<b>1</b>	<b>1.3</b>	<b>1.3</b>	<b>1.3</b>
GO ARMED WITH KNIFE BLADE > 8"	724.4(3)A	<b>1</b>	<b>5</b>	<b>6.1</b>	<b>3.9</b>	<b>9.0</b>
HARASSMENT / 1ST DEG.	708.7(2)	<b>25</b>	<b>39</b>	<b>7.7</b>	<b>0.3</b>	<b>21.2</b>
HARBORING A RUNAWAY	710.8	<b>0</b>	<b>1</b>	<b>7.2</b>	<b>7.2</b>	<b>7.2</b>



Charge and Criminal Code		# with Consec Charges	# of Offenders Released	Avg Months Served	Min Months Served	Max Months Served
IDENTITY THEFT	715A.8,B	1	2	12.2	4.2	20.2
Indecent Contact W/Child-10 Yr Special Sentence	709.12	6	7	16.8	6.1	31.3
INTERFERENCE W/ OFFICIAL ACTS SER. INJ.	719.1(1)	1	1	12.2	12.2	12.2
Interference w/Official Acts Result Serious Injury	719.1(1)(d)	0	2	8.8	8.8	8.8
Interference w/Official Acts, Inflict Serious Injury	719.1(1)(e)	1	1	14.7	14.7	14.7
Interference with Judicial Acts	720.7	1	2	17.1	10.7	23.6
Invasion of Privacy-Nudity-10 Year Special Sentence	709.21(1)	0	1	0.9	0.9	0.9
Involuntary Manslaughter	707.5(1)(b)	0	1	8.1	8.1	8.1
OPER VEH WH INT (OWI) / AGR MISD / 2ND OFF -	321J.2(B)	24	56	4.7	0.9	11.7
OPERATE VEHICLE NO CONSENT	714.7	19	38	7.3	2.5	12.5
OPERATING WHILE UNDER THE INFLUENCE 2ND OFFENSE	321J.2(2)(b)	4	8	1.9	0.1	3.8
Possess incendiary explosive device	712.6(2)A	1	1	11.7	11.7	11.7
Possession of a Controlled Substance - 2nd Offense	124.401(5)b	9	19	7.8	4.1	11.7
Possession of a Controlled Substance - Marijuana 3rd or subseq.	124.401(5),C	6	16	4.7	0.3	9.8
POSSESSION OF BURGLARY TOOLS	713.7	2	3	5.7	3.4	7.6
PREV. APPREHEN., OBSTR. PROSC.	719.3	0	1	7.9	7.9	7.9
Proh Acts-Mfg, Del, Consp or Poss Sched IV or V	124.401(1)(d)	1	3	5.9	5.3	6.4
Proh Acts-Poss w/o Prescription - 2nd Offense	124.401(5),B	25	43	7.2	1.6	15.2

Charge and Criminal Code		# with Consec Charges	# of Offenders Released	Avg Months Served	Min Months Served	Max Months Served
Robbery-3rd	711.3A(4)(1)	1	5	5.8	1.5	12.0
Sex Offender - Registration Violation - 1st offense	692A.104-A	1	9	6.0	3.0	10.3
Sex Offender - Registration Violation - 1st offense	692A.111-A	2	7	7.0	3.4	10.6
Sexual Exploit. by School Employee-10 Yr. Special Sentence	709.15(3)(b)	1	2	16.3	10.9	21.7
Sexual Exploit. of Minor - 10 Yr. Special Sentence	728.12(3)	1	2	33.9	10.7	57.2
Sexual Exploit.By Counselor/Therapist-10 Yr. Spec. Sent.	709.15(2)(b)	1	1	13.1	13.1	13.1
STALKING 2ND OFFENSE (AGGRAVATED) -	708.11(2B)	1	2	19.6	9.2	30.0
STALKING-- AGGRAVATED MISDEMEANOR - 1ST OFFENSE	708.11(3C)	1	1	17.7	17.7	17.7
TAMPERING W/WITNESS OR JUROR	720.4	0	1	7.4	7.4	7.4
TAMPERING WITH RECORDS	715A.5	0	1	8.3	8.3	8.3
TELEPHONE DISSEMINATION OF OBSCENE MATERIAL TO MINORS	728.15(1)	0	1	8.7	8.7	8.7
THEFT 3RD DEGREE	714.2(3)	50	91	6.8	2.6	19.9
UNAUTH. USE OF CREDIT CARD \$1K	715A.6(2)(C)	6	15	5.6	0.0	10.9
UNAUTHORIZED USE OF CREDIT CARDS	715A.6(2)	3	10	5.6	0.3	9.5
<b>Serious Misdemeanor</b>		24	24	5.2	0.1	13.7
ASSAULT ON PEACE OFFICERS & OTHERS	708.3A(4)	1	1	9.1	9.1	9.1

Charge and Criminal Code		# with Consec Charges	# of Offenders Released	Avg Months Served	Min Months Served	Max Months Served
Assault with bodily injury or mental illness	708.2(2)	6	6	5.3	3.1	7.6
DOMESTIC ABUSE ASSAULT - BODILY INJURY - MENTAL	708.2A(2B)	6	6	3.2	0.1	9.1
FAILURE TO APPEAR NOT FELONY	811.2(8),B	1	1	1.9	1.9	1.9
HARASSMENT / 2ND DEG.	708.7(3)	1	1	5.8	5.8	5.8
Indecent Exposure-10 Yr Special Sentence	709.9	1	1	10.8	10.8	10.8
Interference with Official Acts-Bodily Injury	719.1(1)(c)	2	2	1.5	0.4	2.7
OPER VEH WH INT (OWI) / SER MISD / 1ST OFF -	321J.2(A)	2	2	6.5	3.4	9.5
POSSESSION CONTROLLED SUBSTANCE W/O PRESCRIPTION - 1ST OFFENSE	124.401(5),A	1	1	6.1	6.1	6.1
Possession of a Controlled Substance - 1st Offense	124.401(5)(a)	3	3	7.8	4.9	13.7
<b>Simple Misdemeanor</b>		3	3	7.4	5.5	10.4
CONTEMPT - VIOLATION OF NO CONTACT PROTECTIVE ORDER	664A.7(1)	3	3	7.4	5.5	10.4

Time served shown is length of actual stay in prison prior to initial release to parole, work release, special sentence, or end of sentence. Length of stay excludes jail credit and time served in work release facilities. This graph does not include the releases of individuals released from prison following revocation with no new charges.