

Twenty-second Biennial Report  
OF THE  
IOWA SCHOOL FOR THE DEAF

COUNCIL BLUFFS,  
TO THE  
GOVERNOR OF THE STATE,

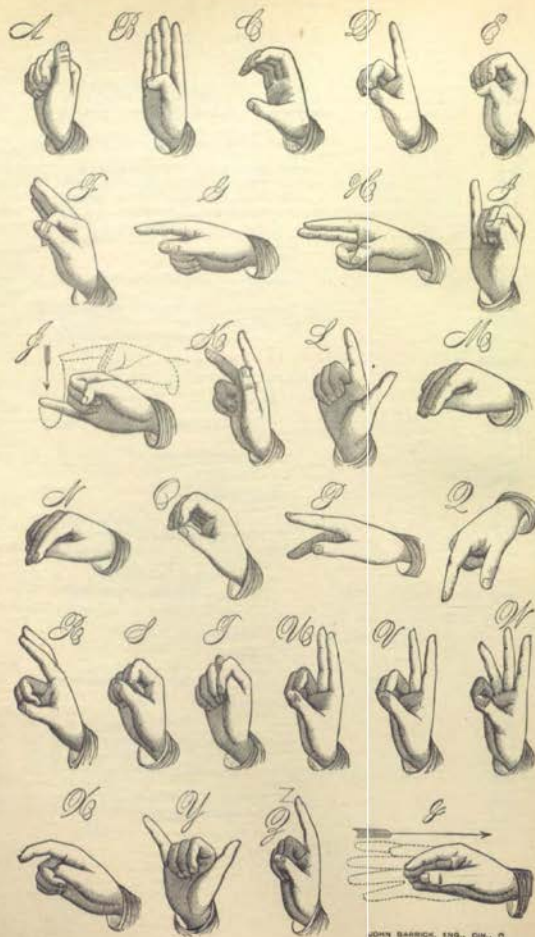
FOR THE  
Biennial Period Ending June 30, 1897.

---

PRINTED BY ORDER OF THE GENERAL ASSEMBLY.

---

DES MOINES:  
F. R. CONAWAY, STATE PRINTER.  
1898.



JOHN BARRICK, ENG., CHICAGO, ILL.

## THE AMERICAN FINGER ALPHABET.

The one-hand alphabet is used exclusively in American schools for the deaf, and is the only one understood by the great majority of deaf mutes in this country. This alphabet can be learned in an hour. It has been learned by close application in ten minutes. It is recommended that the arm should be held in an easy position near the body with the forearm as indicated in the plates. It is not necessary to move the arm, but a short leverage is conducive to ease and is permissible, provided the hand delivers the letters steadily within an imaginary ring of say, ten inches in diameter.

Each letter should be mastered before leaving it. Speed will come with use; but should not be attempted or permitted until the forms of the letters and the appropriate positions of the hand are thoroughly familiar.

Certain letters, as c, d, i, j, k, l, m, n, o, q, u, v and z, resemble written or printed forms. J is simply traced in the air with the little finger, and z in like manner with the index finger. H, u and n differ only in the position of the hand, and t is formed as in "taking off baby's nose." These ten words contain all the letters; adz, fan, map, cow, box, jar, sky, hat, quill, glove. Practice upon each of these for five minutes.

# OFFICERS AND TEACHERS.

## BOARD OF TRUSTEES.

HON. JOHN BEATTY.....STORY COUNTY.  
HON. A. T. FLICKINGER.....POTTAWATTAMIE COUNTY.  
HON. W. A. DeLASHMUTT.....RINGGOLD COUNTY.

SECRETARY OF BOARD:  
HON. A. T. FLICKINGER.

SUPERINTENDENT:  
HENRY W. ROTHERT.

## OFFICERS.

MRS. HENRY W. ROTHERT.....Matron  
JOHN F. SCHULTZ.....Bookkeeper  
J. J. KIES.....Boys' Supervisor  
LENA SEYFERT.....Girls' Supervisor  
MRS. MAMIE FOOLE.....Small Boys' Supervisor  
F. W. BALLUFF.....Engineer

## EDUCATIONAL DEPARTMENT.

*Under Management of G. L. WYCKOFF, Principal.*

C. SPRUIT.	E. J. ISRAEL.
W. S. MARSHALL.	MARY E. HOLDER.
HIRAM PHILLIPS.	CORA E. COE.
FRANK HOLLOWAY.	DAVID RYAN, JR.
C. S. ZORBAUGH.	LIZZIE E. FULLER.
B. T. BENSTED.	H. E. THOMPSON.
JOHN W. BARRETT.	EDITH WYCKOFF.
FLORENCE WILCOXSON.	LAURA MACDILL.
MARGARET HAMILTON.	MRS. C. SPRUIT.
MARGARET WATKINS.	

## INDUSTRIAL DEPARTMENT.

*Under Management of HENRY W. ROTHERT, Superintendent.*

CHARLES H. GILBERT.....Foreman of Carpentering  
Z. B. THOMPSON.....Foreman of Printing  
L. W. POUND.....Foreman of Shoe-making  
FRED AUWERTER.....Foreman of Baking  
MRS. J. W. WHERRY.....Foreman of Cooking School  
MISS SARAH McMEEN.....Foreman of Sewing Room  
J. J. KIES.....Foreman of Farm and Dairy  
SELMA SEYFERT.....Foreman of Ironing  
PETER NELSON.....Foreman of Gardening

## PHYSICAL CULTURE.

DAVID RYAN, JR.....Teacher

## REPORT OF THE BOARD OF TRUSTEES.

*To His Excellency, Francis M. Drake, Governor of Iowa:*

SIR—As required by statute we, the undersigned, trustees for the Iowa School for the Deaf, respectfully submit our report for the biennial term, ending June 30, 1897.

At the last session of the legislature, the Hon. John Beatty, of Nevada, Story county, was re-elected for a term of six years, beginning May 1, 1896.

The board was reorganized May 1, 1896, by the election of W. A. DeLashmutt, president, and A. T. Flickinger, treasurer.

Owing to a change in the law enacted at the special session of the Twenty-sixth General Assembly, and in order to conform with the same, F. O. Gleason, of Council Bluffs, was elected treasurer, and Hon. A. T. Flickinger, of Council Bluffs, was elected secretary.

The period covered by our report has been a very successful one. The children have been healthy and we think have made good progress in their work, both in industrial and educational departments. For these satisfactory results we are indebted largely to the proficient management and watchful care of Hon. Henry W. Rother, superintendent, and Mrs. Henry W. Rother, the matron, assisted by the best efforts of the officers and employes of the institution.

The educational department is, as it has been for sometime past, under the direct supervision of Prof. G. L. Wyckoff, who has the assistance of a very able corps of teachers. We hereby desire to testify our appreciation of the services of officers, teachers and employes.

We are pleased to note the increased number of visitors to the institution, indicating, as we think, an increased interest of the people of the state. We gladly welcome all, feeling that each visitor becomes a friend.

The property of the state, both real and personal, is in as good condition as it is possible to keep it with the limited



means placed at our disposal. The special appropriations made by the last general assembly have been nearly all expended for the various purposes set forth, for which they were made, as will be seen by the report herewith submitted. The further needs of the institution are set forth at length in the report of the superintendent, to which your attention is respectfully directed.

Owing to a change in the manner of paying our quarterly allowance, and by special ruling of the Hon. C. G. McCarthy, auditor of state, the finances of the institution have been impaired to such extent that we are unable to meet the current bills promptly.

The board of trustees, depending upon the revenue as received for years past, and certainly not anticipating any change or decrease in same, had at the proper time entered into contracts, made arrangements for supplies, fixed salaries and compensations for the entire biennial period.

The opinion of the honorable attorney-general, as given to the honorable auditor of state, and consequently governing that officer's actions, suddenly contracted the revenue as well as extended the time of receipt of such revenue three months, while prior to the promulgation of this opinion, a continuous period of thirty-four years, the revenue of the school was based upon the actual number of pupils present during the quarter, and paid for a quarter in advance, the revenues were ordered drawn upon the average number of pupils present, and paid for the quarter past, and since the first of January, 1897, this has been the method pursued, making a difference of \$6,000 to \$8,000 in the annual receipts. This has brought about a very unpleasant and burdensome state of affairs, as well as crippled the efficiency of the school.

We find ourselves in debt without any prospect of being able to meet our obligations for from three to six months. It is impossible to purchase supplies at prices commanded by prompt payments, but we are compelled to recognize the advance placed upon the value of goods as sold to the slow debtor or the long time purchaser. This is not only a discredit to the state, but a serious loss to the institution. The indebtedness at the end of the biennial period, thus accruing from a contraction of our revenue, amounts to \$8,000, and we deem it our duty to respectfully petition the honorable general assembly for relief.

By a special appropriation covering this amount, the Iowa School for the Deaf would be relieved of its distressing financial embarrassments, the creation of which is no fault whatever of the board of trustees, and place it upon an acceptable and proper footing with all other institutions of Iowa.

This institution has a special mission to perform, and in order to secure a correct impression and to arrive at a proper conclusion concerning the Iowa School for the Deaf and its needs, answers must first be obtained to the queries: What is it, and what is its mission? It is simply what its name implies, a school for the deaf, an educational institution of Iowa called into life and maintained for the benefit of those who are deaf and who cannot obtain an education in the public schools of the state. It is a branch, a part and parcel of our grand educational system of which we are so justly proud. It is neither an asylum, a hospital, or a place of refuge. Its pupils are entitled to the same fostering care as to their mental and physical development, as their more fortunate brothers and sisters.

Its mission is to impart such knowledge to its scholars as will provide for an honest citizenship. Its field of usefulness embraces the preparation for the active walks of life, so as to guarantee a self-supporting and independent existence. It is governed in a general way as are other schools, and is provided in the same manner with buildings, schoolrooms and apparatus.

It has its board of directors, its superintendent, its principal and teachers. It recognizes, as all schools do, the necessity of certain time for rest and recreation. Its vacation is similar in duration with the general average of the larger schools of the state. It cannot, therefore, be classed as to its management or as to its needs with the reformatory, penal, or charitable institutions of Iowa.

We recognize the principle that one generation owes to the succeeding one a fair, common education by our entire educational system, in which, without question, the deaf are included. They are as susceptible to mental development and have the same hopes, aspirations, and ambitions as the speaking and hearing children.

We therefore prepare the way for their future, just as we do for the future of the others. We do no more for the deaf than for the speaking, with but one exception—we board them at the institution without cost to themselves. This is not a matter of charity, but a matter of economy to the state. Recognizing

their rights, as above stated, if we divide the state into twenty deaf districts, which would certainly not be as liberal a division as we accord to the speaking, and placed them upon an absolute level with others without board, it would, with twenty different managements, cost the taxpayers of the state a much larger amount than at present. Just as in the graded schools it requires special teachers for special branches, so in this school it requires a special fitness on the part of officers and teachers to carry out the purposes for which this money is expended. It is better, wiser, and more economical, therefore, to gather these wards of the state under one roof, and intrust them to the care of one management.

As to the results, and whether or not the Iowa School for the Deaf conforms to its missions thus outlined, we beg to point with pardonable pride to the fact that it ranks with the older and more liberally endowed institutions of similar kind in the country. It has had a larger representation at the National College for the Deaf at Washington, D. C., provided and maintained by the general government, than any other school for the deaf in the United States. Its graduates are found scattered throughout Iowa, intelligent men and women earning their daily bread by handicrafts learned while here at school. Its percentage as to results of independent, intelligent citizenship is 95 per cent, far exceeding, perhaps, any estimates which can possibly be made by those uninformed.

It has been accorded a proportion of the revenues of the state, to which, in the judgment of general assemblies of the past, it is entitled, and the same placed in the hands of a board of trustees, for a beneficial, judicial and economical disbursement. Whether these instructions, absolutely proper in the expenditure of public moneys, have been honestly followed and whether the cost to the state for the maintenance of this school is in fair proportion to the results, can be ascertained from a detailed examination and from a comparison with other schools of similar kind in the country.

Begging to refer to a schedule of the annual cost per capita of twenty-six state institutions hereunto attached, taken from the printed report of the Illinois school marked Appendix "A," it is noticeable that while the average cost of these twenty-six institutions per capita per annum is \$239.33, Iowa ranks among the lowest with a per capita per annum of only \$208.24. It is a further satisfactory and gratifying fact that the cost per

capita per annum in the Iowa School for the Deaf has been gradually diminished in the last ten years, as demonstrated by the table of averages for ten years past, marked Exhibit "C."

These expenditures per annum were provided for by appropriations per annum, which, in the thirty-four years of the existence of this school, were drawn by authority of legislative enactment in quarterly installments. Prior to this time, and from the organization of the institution in 1855, annual appropriations were made drawn in gross amounts. At no time, from the beginning in 1855 to the first of January, 1897, a period of forty-two years, has this school received its revenue in less amounts than covered by annual appropriations, that is to say for the entire year. Although since 1863 this amount per year was drawn quarterly, yet never has there been any quarter questioned or omitted. The very life of the institution depended upon its annual appropriations. Dates of requisition, in month or quarter, have varied, owing to the condition of state treasury or convenience of officers, or necessities of the school, but never has the institution been deprived of its income for the entire year.

There is no quarter in the year in which our pupils are not present. Vacation months occur part in one quarter and part in another quarter, but never have these vacation months been recognized as a factor in decreasing the revenue of the school. This recess recognized, for obvious reasons, by every educational institution in the civilized world, is with us a time for recuperation and repairs. It is financially a resting-spell from the monthly expenditures for so large an institution, and the money saved by the children's absence accumulates only in an amount sufficient to make ends meet during the entire year. Without this saving the appropriations would necessarily have to be considerably increased, or the institution severely crippled in its efficiency.

That it was the intention of the general assemblies to recognize the vacation as a part of the school year is plainly set forth in chapter 152, section 2, acts of the Ninth General Assembly, 1862; see Appendix "C" defining the manner of drawing the current fund, viz., upon certificate furnished by the board of trustees, of the actual number present at the beginning of any one quarter, and should the beginning occur in vacation then of the actual number present at the beginning of the preceding quarter.



The next, or Tenth, General Assembly, 1864, changed the amounts of ordinary and current fund and directed that both funds should be drawn quarterly, whereas, heretofore the ordinary fund had been drawn in gross amounts; see section 8, chapter 54, acts of Tenth General Assembly; and having so directed, repealed chapter 152, acts of the Ninth General Assembly, including section 2 aforesaid.

The Eleventh General Assembly, 1866, following, made no change in the amounts or manner of drawing the funds.

The Twelfth General Assembly, 1868, changed the amount of ordinary fund, permitting amount of current fund to remain, as before, but in the direction as to the manner of drawing such funds added the words, "in the usual manner." The term, "in the usual manner," has been a part of the law governing statutory appropriations for this institution from the time of the first enactment, 1868, to the present time.

This institution has drawn in this "usual manner" from that time to this, and there can be no question that general assemblies, or the proper committees, when the matter of revenue was presented for their consideration, were in possession of all the facts, including the manner and basis of annual allowances, and this was a factor in changing the amounts of appropriation as the necessities of the school required. Eleven different general assemblies, from the year 1862 to 1894, inclusive, have considered and taken action on the revenue of the school, and being cognizant of all the facts have, re-enacting the term "in the usual manner," recognized the correctness of the past, including vacation months, and legally authorized the board of trustees to draw for every pupil actually present at the beginning of a quarter as the specific directions of the act of the general assembly contemplated. That it was the intention of the general assemblies to authorize an allowance for each pupil present in the quarter is further evidenced by the words, "or so much thereof as may be necessary," and adding thereto the words, "and then only in such amounts as the wants of the institution may require." See section 1696, code of Iowa. The only and proper construction to this phraseology is that the board of trustees was authorized to draw for each pupil present in the quarter, but only upon condition that the wants of the institution required the same.

The general assembly made an appropriation for the entire year based upon the number of all the pupils present, but

restricted the amount to "as much thereof as may be necessary."

Such has been the construction of the intent and purpose of the law by the eleven general assemblies referred to by all the honorable auditors of state since the organization of the school in 1855, and sanctioned by this construction were all the official acts of all the boards of trustees of the school since its organization to the present time; among the members of which were ex Governor Carpenter, ex Auditor of State Cattell, ex Senators Schrader, Baldwin, Hebard, Teal and Ranek, and ex Representative Clayton. Others have served the state as trustees of this institution for a longer period than one term, some only severing their connection after a service of eight, ten, twelve and fourteen years, and all of them have never doubted the correctness of their action based upon the above construction.

Furthermore, representatives of the executive department have in former times visited the institution, and carefully examined its receipts and disbursements, and have known and sanctioned this method and manner of drawing its revenue.

In addition\* to above, a principle governs, which is the well known rule that where the proper department has for a long series of years construed a statute governing it upon a particular subject, such construction becomes effective and legal by its very adoption and observance.

1. Hereunto attached is a complete summary of all the acts of general assemblies referring to the annual revenue of the board, with a verbatim copy of each section: Exhibit "A."

2. Table of annual per capita cost of twenty six state institutions for the deaf: Exhibit "B."

3. Table of per capita cost per annum of the Iowa School for the Deaf for the last ten years: Exhibit "C."

4. Tabulated statement as to time and amount of current and ordinary fund, beginning April 8, 1862, when quarterly installments were authorized: Exhibit "D."

The board of trustees, after careful consideration of the needs of the school for the ensuing biennial period, would recommend the following appropriation:

## SUMMARY.

Electric light.....	\$1,500
Fencing.....	500
Repair fund.....	2,000
Type and tools for industrial schools.....	500
Library.....	200
Ice pond.....	1,000
Water closets in industrial schools.....	500
Soap house and vats.....	300
Gas furnace and gas house.....	500

W. A. DE LASHMUTT,  
JOHN BEATTY,  
A. T. FLICKINGER } Trustees.

## EXHIBIT "A."

*Commencing at and referring to chapter 150, page 175, acts of the Ninth General Assembly (1862).*

An appropriation to meet the ordinary expenses of \$3,000 per annum, and an appropriation to meet the current expenses, \$25 per quarter for each pupil in said institution, including the vacation quarter.

Section 1. Be it enacted by the general assembly of the state of Iowa: That to meet the ordinary expenses of the deaf and dumb and blind asylums, institutions for the education of mutes and the blind, including rents, furniture, books, maps, charts, music and musical instruments, and the compensation of the principal, matron and teachers of such institutions, there is hereby appropriated from the state treasury the sum of \$3,000 per annum to each of said institutions, or so much thereof as may be necessary.

Section 5. For the purpose of meeting the current expenses, there is hereby appropriated out of the state treasury, \$25 dollars per quarter for each pupil in said institutions, or so much thereof as may be necessary; provided, however, that the board of trustees shall, at the beginning of each quarter, when the school is in session, transmit to the auditor of state their order on said auditor, a certificate of the actual number of pupils present at the beginning of said quarter, and should the beginning occur in vacation, the actual number the preceding quarter, and upon this certificate the Auditor shall issue thereon warrants according to the order of the board of trustees.

*Referring to chapter 54, page 57, acts of the Tenth General Assembly (1864).*

To meet the ordinary expenses, appropriation \$4,000.

To meet the current expenses, \$30 per quarter for each pupil.

Section 1. Be it enacted by the general assembly of the state of Iowa: That to meet the ordinary expenses of the institution for the education of the blind and deaf and dumb, including furniture, books, maps, music, musical instruments, and the compensation of the principals, matrons, teachers and employees of such institutions, there is hereby appropriated the sum of \$4,000 per annum to each of said institutions, or so much thereof as may be necessary.

Section 5. For the purpose of meeting current expenses there is hereby appropriated out of the state treasury, \$30 per quarter for each pupil in each of said institutions.

Section 8, inserted below, designates the manner of drawing aforesaid appropriations:

Section 8. The above appropriations shall be drawn quarterly on the order of the trustees of the institutions, made on the auditor of state, who shall draw his warrant in the name of such institutions, on the treasurer as ordered by the trustees.

*Referring to chapter 136, page 146, acts of the Eleventh General Assembly (1866).*

No change of former provisions was made.

*Referring to chapter 106, page 146, acts of the Twelfth General Assembly (1868).*

Appropriation to meet ordinary expenses, \$5,000 per annum.

Appropriation to meet current expenses, \$30 per quarter.

Section 1. Be it enacted by the general assembly of the state of Iowa: That to meet the ordinary expenses of the institution for the education of the deaf and dumb, including furniture, books, school apparatus, and the compensation of officers and teachers, there is hereby appropriated the sum of \$5,000 per annum, or so much thereof as may be necessary.

Section 4. For the purpose of meeting current expenses, there is hereby appropriated the sum of \$30 per quarter for each pupil in said institution.

Section 7, inserted below, directs how appropriations shall be drawn and in the usual manner.

Section 7. The above mentioned appropriations, including the accounts for clothing aforesaid, shall be drawn quarterly on the requisition of the board of trustees of the institution in the usual manner.

*Referring to chapter 78, page 70, acts of the Thirteenth General Assembly (1870).*

Appropriation to meet ordinary expenses, \$8,000.

Appropriation to meet current expenses remained as before.

Section 4. To meet the ordinary expenses of the institution, including furniture, books, school apparatus, and compensation of officers and teachers, there is hereby appropriated the sum of \$8,000 per annum, or so much thereof as may be necessary.

*Referring to chapter 75, page 13, acts of the Fourteenth General Assembly (1872).*

To meet the ordinary and current expenses.

Appropriation \$12,000 per annum and \$40 per quarter.

Section 2. To meet the ordinary and current expenses of the institutions, including salaries to officers and teachers, wages to laborers (male and female), repairs, etc., there is hereby appropriated the sum of \$12,000 per annum; and, in addition thereto, \$40 per quarter for each pupil.



*Referring to code, 1873, page 313, section 1692.*

Appropriation to meet current expenses, \$40 per quarter. Section 1693, to meet ordinary expenses, \$12,000 per annum.

Section 1692. For the purpose of meeting current expenses, there is hereby appropriated the sum of \$40 per quarter for each pupil in said institution.

Section 1693. To meet the ordinary expenses of the institution, including furniture, books, school apparatus, and compensation of officers and teachers, there is hereby appropriated the sum of \$12,000 per annum, or so much thereof as may be necessary, which may be drawn quarterly in such sums as the necessities of the institution may require.

Section 1696 directs how appropriations shall be drawn, retaining the words "in the usual manner," and adding thereto the words "and then only in such amounts as the wants of the institution may require."

Section 1696. The above mentioned appropriation, including the accounts for clothing aforesaid, shall be drawn quarterly, on the requisition of the board of trustees of the institution in the usual manner, and then only in such amounts as the wants of the institution may require.

*Referring to acts of the Fifteenth General Assembly (1874), no change in above provisions was made.*

*Referring to the acts of the Sixteenth General Assembly (1876), no change in above provisions was made.*

*Referring to chapter 98, page 88, acts of the Seventeenth General Assembly (1878).*

Appropriation of \$40 to meet current expenses was stricken out and \$30 inserted.

In appropriation to meet ordinary expenses "twelve" was stricken out and "eight" inserted.

Section 1. That section 1692 of the code be and the same is hereby amended by striking out the word "forty," in the second line of said section, and inserting the word "thirty" in lieu thereof.

Section 2. That section 1693 of the code be and the same is hereby amended by striking out the word "twelve," in the fourth line of said section, and inserting the word "eight" in lieu thereof.

*Referring to chapter 203, page 201, acts Eighteenth General Assembly (1880).*

Appropriations to meet current expenses, "thirty" was stricken out and "twenty-eight" inserted.

To meet ordinary expenses, "eight" was stricken out and "eleven" inserted.

Section 1. Be it enacted by the general assembly of the state of Iowa: That chapter 98, laws of the Seventeenth General Assembly, be and the same is hereby amended by striking out the word "thirty" in the third line of section 1, and inserting in lieu thereof the word "twenty-eight;" and also, by striking out the word "eight," in the third line of section 2, and inserting the word "eleven" in lieu thereof.

*Referring to chapter 105, page 101, acts Nineteenth General Assembly (1882).*

Appropriations to meet current expenses, "twenty-eight" was stricken out and "thirty-five" inserted.

To meet the ordinary expenses, "eleven" was stricken out and "sixteen" inserted.

Section 1. Be it enacted by the general assembly of the state of Iowa: That chapter 203, laws of the Eighteenth General Assembly, be and the same is hereby amended by striking out the word "twenty-eight," in the fourth line of section 1, and inserting in lieu thereof the word "thirty-five," the same to commence and have effect from the quarter commencing January 1, 1882; and also, by striking out the word "eleven," in the sixth line thereof, and inserting the word "sixteen" in lieu thereof.

*Referring to chapter 73, page 82, acts Twentieth General Assembly (1884).*

Appropriations to meet current expenses was unchanged.

Appropriations to meet ordinary expenses, "sixteen" was stricken out and "twenty-one" inserted.

Section 1. Be it enacted by the general assembly of the state of Iowa: That chapter 105, laws of the Nineteenth General Assembly, be and the same is hereby amended by striking out the word "sixteen," in the seventh and eighth lines of section 1, and inserting the word "twenty-one" in lieu thereof.

The above is the last change made and is the law at the present day.

## EXHIBIT "B."

*Table of annual per capita cost of twenty-six institutions for the deaf.*

Colorado.....	\$ 377.65	North Dakota.....	\$ 214.58
New Jersey.....	314.88	Kentucky.....	308.75
American, Hartford, Ct.....	303.16	Wisconsin.....	308.75
Rhode Island.....	293.65	Iowa.....	308.23
Massachusetts.....	300.60	Indiana.....	307.25
New York (8 institutions, average).....	307.25	Texas.....	304.00
California.....	294.81	Maryland.....	292.74
Pennsylvania (eastern).....	291.28	Montana.....	196.51
Ohio.....	284.00	Illinois.....	181.00
Pennsylvania (western).....	284.25		
Average of these institutions, including Iowa.....	290.39		
Average of Iowa, 26 years.....	309.24		

## EXHIBIT "C"

*Average per capita per annum, 10 years.*

YEARS.	AVERAGE.	YEARS.	AVERAGE.
For the year 1887.....	\$ 220.75	For the year 1893.....	\$ 220.39
For the year 1888.....	220.14	For the year 1894.....	210.01
For the year 1889.....	213.86	For the year 1895.....	209.54
For the year 1890.....	213.25	For the year 1896.....	208.24
For the year 1891.....	213.63		
For the year 1892.....	213.10	Total.....	\$2,159.29
Average for 10 years.....	213.25		215.92

## EXHIBIT "D."

*Action of general assemblies as to appropriations.*

DATE STATUTE OPERATIVE.		AMOUNT OF APPROPRIATION.	
FROM.	TO.	CURRENT.	ORDINARY.
April 8, 1863 .....	March 23, 1864 .....	\$25 per quarter .....	\$ 3,000
March 30, 1864 .....	April 19, 1865 .....	30 per quarter .....	4,000
April 19, 1865 .....	July 4, 1870 .....	30 per quarter .....	5,000
July 4, 1870 .....	April 22, 1872 .....	30 per quarter .....	8,000
April 22, 1872 .....	July 4, 1873 .....	40 per quarter .....	12,000
July 4, 1873 .....	July 4, 1878 .....	40 per quarter .....	12,000
July 4, 1878 .....	April 5, 1880 .....	30 per quarter .....	8,000
April 5, 1880 .....	Jan. 1, 1883 .....	30 per quarter .....	11,000
April 5, 1880 .....	March 23, 1882 .....	30 per quarter .....	14,000
Jan. 1, 1883 .....	to present time .....	.....	21,000
March 23, 1882 .....	March 23, 1884 .....	.....	.....
March 23, 1884 .....	to present time .....	.....	.....

## REPORT OF SUPERINTENDENT.



## SUPERINTENDENT'S REPORT.

*To His Excellency, Gov. F. M. Drake:*

The close of another biennial period in the existence of the Iowa School for the Deaf, necessitates the recognition of requirements of laws governing this institution, and I therefore beg to present my report for the term commencing July 1, 1895, and ending June 30, 1897, both dates inclusive. The conditions surrounding the school up to January 1st of the present year, have been favorable to an acceptable performance of its mission in behalf of the deaf children of the state. Unfortunately, however, owing to a new construction placed upon the statute governing its financial support, its revenues were decreased and its bright future of usefulness somewhat clouded, the effect of which will become apparent during the next term of school.

The progress made in the several and various departments for the term has been equal to that of preceding years.

The general health has been all that could be desired, the attendance of pupils regular, the mental advancement and the practical acquirements noticeable with each and every scholar. Consequent upon these gratifying facts we note the happiness and contentment of our children and the approval and satisfaction of their parents. An honest, earnest devotion to the duty of carrying out, under the direction of the honorable board of trustees, the purposes for which this institution is maintained, prompts the reference to those needs and necessities which are strikingly apparent by a close acquaintanceship and by daily experience.

### ELECTRIC LIGHT.

The time has passed when this method of illumination can be considered an experimental one. Our plant was among the first placed in institutions, and consequently is wanting in those special features of permanency, security, and efficiency, which later developments and improvements have created and established. In many places our wiring is imperfect, our lamps are old, our dynamo is of an ancient pattern, and our engine liable to become useless at any time, especially so as the same has never been equal to its original power after the fire several years ago. An appropriation of \$2,500 is urgently needed to better and improve this service.

### FENCING.

The partition fences, as well as those bordering the three highways on the west, east and north of our grounds, should be replaced.

An unsightly, dilapidated fence is not a mark of good husbandship and for the credit of the state, as well as for the protection of its property, an appropriation of \$500 for this purpose is called for.

## REPAIR FUND.

It would be impossible to retain our buildings in inhabitable as well as presentable shape, unless an annual appropriation be allowed to make such betterments and repairs as are absolutely necessary. Some of our buildings have been erected twenty years and the natural wear and decay must be replaced. All of the thirteen buildings, situated on different parts of the grounds, need attention, both interior and exterior.

With a population of 300 or more children, not educated as yet as to values, it is no difficult task to account for the damage and destruction of property, while the exteriors of several buildings necessarily undergo the changes incident to the atmosphere and the weather. An appropriation of \$4,000, or \$2,000 annually, would not be above the needs.

## TYPE AND TOOLS FOR INDUSTRIAL SCHOOL.

It will be necessary to purchase new type for our printing office, as well as additional tools for shoe and carpenter shop.

These departments where the pupil may acquire a handicraft, by the exercise of which in after life he can maintain an independent existence, deserve our fostering care and support. An appropriation of \$500 is respectfully asked for the purpose above mentioned.

## LIBRARY.

The increasing publication of juvenile books, the replacing of old, worn-out volumes, the incalculable benefit to our pupils of additional reading matter, all warrant the request for an appropriation of \$200 to be expended in extending and increasing the facilities of library and reading room.

## ICE FOND.

The necessities, together with the peculiar advantages for this improvement, were set forth in our last biennial report.

The appropriation then asked for was committed, and we beg to renew the request, being convinced that the improvement if made would return to the state in a few years the original cost and in addition thereto furnish pure, wholesome ice for many seasons to come.

While estimates made reach the sum of \$1,500 it is the opinion that \$1,000 would cover the expense. This matter being not only of great importance, but also a matter of eventual economy, a careful consideration of same is respectfully requested.

## GAS FURNACE AND GAS HOUSE.

It is not economy to continue the electric light during the entire night, as it would entail the salary of an assistant engineer and the additional expense of the fuel. We have, therefore, utilized our old gas furnace in order that part of the buildings should not be in total darkness. The hall and passage-ways, water-closets, and ingress and egress to and from the dormitories are provided with gas, which, in the case of accident or fire, is indispensably necessary.

The gas house and furnace have been in service so long that they are in a dilapidated and unserviceable condition.

This is one of the most important necessities to be considered, and we respectfully ask for an appropriation of \$500 for this purpose.

## WATER-CLOSET FOR INDUSTRIAL SCHOOL BUILDING.

Owing to the want of funds at the time these buildings were erected the above necessary addition to same was not completed.

The industrial schools are occupied daily during the week by near one hundred pupils, and the necessity for this improvement is consequently an urgent and accepted fact.

The addition should be built of brick and carried to the second floor, including in the space a wash room for either story.

Upon estimates made the cost of this improvement, with sewerage, will reach \$500, for which an appropriation is asked.

## SOAP HOUSE AND VATS.

Proper and economical management would imply utilizing whatever can be converted into material, which, when so converted, will take the place of supplies bought in the market.

The large consumption of soap and the consequent large expenditure for same can be materially decreased by a product produced with conveniences and apparatus furnished by a soap house and vats.

The expenditure for same will not be a permanent outlay to the state, but return in a short period of time more than the cost. An appropriation of \$300 will cover all the requirements for this economical addition.

## THE TRANS-MISSISSIPPI AND INTERNATIONAL EXHIBITION.

This enterprise, now fully established and which, from assurances received by its management, is to be without question a complete success, will open in the city of Omaha June 1, 1898, and continue for five months next following. Situated as this institution is, within easy reach of the large number of visitors to this exhibition, we shall be placed in the position of a representative state institution of Iowa and compelled to entertain, as far as may be, each and every stranger who may be prompted by a desire to become acquainted with Iowa and Iowa institutions.

This will entail considerable expense, inasmuch as additional help will be necessary, the corps of officers retained during vacation and the building and grounds kept in special fitness for inspection. In other words, while the exhibition is held in Omaha and beyond the state line, yet this institution being so near the border will be on exhibition for the same period of time. The credit of the institution and the pride of Iowa is involved and we beg to submit that, in some way, the necessary provisions be made to carry out the above suggestion. Whether this be done under the direction of the honorable commission of Iowa, or a special appropriation of \$1,000 (or so much thereof as may be necessary) be made, is a matter for the honorable general assembly to determine.

## CONCLUSION.

I submit hereunto attached a financial statement of receipts and expenditures and a list of all pupils attending school with name, sex, age, residence, place of nativity, and cause of deafness, so far as the latter can be ascertained. I also add the course of study and a list of trades taught as required by law. It would be unbecoming in me did I not thus publicly recognize in my report to the governor of the state the helpful mandatory authority of the honorable board of trustees, whose official direction never extended beyond the circle



"for the children's good," and whose authority was ever and only exercised by earnest prompting for the betterment and improvement of the entire school. And now permit me to emphasize a part of a former report in saying "I sincerely trust that the record of the past two years, and the suggestions herein made, will secure your approving consideration, and at the hands of the incoming general assembly." "The children of silence" of Iowa may be continued to be recognized by that generous fostering care which has built up an educational institution of the state of which every citizen is so justly proud, so that the time may not be far distant when the Iowa School for the Deaf may be second to none and equal to the best in the land.

Respectfully submitted,

HENRY W. ROTHERT,  
*Superintendent.*

#### OFFICERS AND TEACHERS.

The following is a list of officers and teachers at the end of the biennial period, with salaries paid each:

	PER ANNUM.
Henry W. Rothert, superintendent, resident.....	\$ 2,350.00
(No assistant or steward.)	
G. L. Wyckoff, principal, nonresident.....	1,700.00
C. Spruit, teacher, nonresident.....	1,300.00
W. S. Marshall, teacher, nonresident.....	1,300.00
Hiram Phillips, teacher, resident.....	1,300.00
Frank Holloway, teacher, nonresident.....	1,300.00
C. S. Zorbaugh, teacher, nonresident.....	1,000.00
B. T. Bensted, teacher, nonresident.....	1,000.00
John W. Barrett, teacher, nonresident.....	800.00
Florence Wilcoxson, teacher, resident.....	600.00
Margaret Hamilton, teacher, resident.....	600.00
Margaret Watkins, teacher, resident.....	600.00
E. J. Israel, teacher, resident.....	550.00
Mary E. Holder, teacher, resident.....	550.00
Cora E. Coe, teacher, resident.....	550.00
David Ryan, Jr., teacher, resident.....	550.00
Lizzie E. Fuller, teacher, resident.....	400.00
H. E. Thompson, teacher, resident.....	300.00
Edith Wyckoff, teacher, resident.....	300.00
Laura MacDill, teacher, resident.....	300.00
Mrs. Henry W. Rothert, matron, resident.....	250.00
(No assistant or housekeeper.)	
Mrs. C. Spruit, teacher, nonresident.....	PER MONTH.
John F. Schulte, bookkeeper, nonresident.....	\$ 35.00
J. J. Kies, boys' supervisor, resident.....	50.00
Lena Seyfert, girls' supervisor, resident.....	50.00
Mrs. Mamie Poole, small boys' supervisor, resident.....	35.00
Mrs. M. E. Brown, nurse, resident.....	30.00
F. W. Balluff, engineer, nonresident.....	30.00
Charles H. Gilbert, carpenter shop, nonresident.....	85.00
Z. B. Thompson, printing office, nonresident.....	70.00
L. W. Pound, shoe shop, nonresident.....	60.00
Fred Auwerter, bakery, nonresident.....	60.00
Peter Nelson, gardener, resident.....	50.00
Mrs. J. W. Winery, cooking school, resident.....	45.00
Mrs. Sarah McMeen, sewing department, resident.....	35.00
Selma Seyfert, ironing-room, resident.....	30.00
	18.50

#### INDUSTRIAL DEPARTMENT.

##### TRADES TAUGHT.

Attention is paid to the following practical education of the pupils:

##### BOYS.

Printing.  
Carpentering.  
Shoemaking.  
Broom Making.  
Baking.  
General Farming.  
Flower Gardening.  
Vegetable Gardening.

##### GIRLS.

General Housework.  
Plain Sewing.  
Embroidery.  
Dress Making.  
Ironing.  
Cooking.

#### EDUCATIONAL DEPARTMENT.

##### COURSE OF STUDY.

##### FIRST GRADE.

*Language.*—Names of objects in the schoolroom; names of members of the class; articles of household and kitchen furniture; articles of dress; parts of the body; days of the week; and names of all things with which the pupils are presumably familiar may be taught. The article the is to be used before nouns in all cases where an article is demanded. Both singular and plural forms of nouns are to be taught. All personal pronouns except the reflexives. The adjectives of number to ten, and simple adjectives of kind and quality, such as good, bad, rude, hot, cold, sick, well, as part of the copula. The prepositions on, into, of, from, off, to and with. Verbs describing single actions in the past tense; the verb to be in past and present tense; a few verbs expressing emotions in the present tense; questions: Who? Where?

Let the greater part of the instructions be by topics, selecting only those with which the pupil is presumably familiar, as cooking, sewing, baking, washing, etc. Pay particular attention to sequence of events.

No text-books.

##### SECOND GRADE.

*Language.*—Nouns, names of things seen or used in the ordinary work of the school, kitchen and dining room, farm, barn and garden, with the verbs, adjectives and other parts of speech necessary in describing, in simple sentences, all of the operations of the same, the future tense, the words told, asked

and said followed by a quotation, the infinitives of purpose, the indefinite numerals, such as some, many, several. Avoid the use of the habitual present tense and teach the actual present of a few verbs that do not form the actual present with *ing*.

Continue instructions by topics, as in first grade. Questions, the direct form: Whom? How many? Which? When?

*Arithmetic*.—All the fundamental operations with numbers below twenty, using actual quantities. Avoid all abstract numbers.

No text-books.

#### THIRD GRADE.

*Language*.—Trades and occupations, operations, tools and products of the same. All tenses of the verb, except the past and future perfect, comparison of adjectives, adverbial phrases of time, as last night, next week, etc. Infinitive as object of the verb; the reflective pronouns. Journal. Question.

*Arithmetic*.—The same as second grade, with large numbers. Drill with figures.

*Geography*.—Local, with direction and distance. Map of schoolroom and surroundings.

No text-books.

#### FOURTH GRADE.

*Language*.—Trades and occupations continued, collective nouns, the infinitive after make, let, help, see; the potential mood, with may, must and can; also negatives. The conjunctions, either—or, neither nor, both—and, whether—or. Drill in infinitives. The words somebody, nobody, anybody, and comparison of adjectives. Journal and picture descriptions. Questions requiring the passive voice in answer.

*Arithmetic*.—Mental and practical problems; notation and numeration, complete; United States money, complete.

*Geography*.—State, with special reference to lines of travel. Use sand-board.

No text-books.

#### FIFTH GRADE.

*Language*.—Special drill in use of auxiliary verbs, the passive voice, the present and perfect participle. The potential mood, complete; comparison of adjectives; natural history; stories. Journal.

*Arithmetic*.—Practical problems and drill exercises. Compound numbers begun.

*Geography*.—Exercises upon outline maps; descriptive lessons of principal countries.

*History*.—Stories by teacher.

No text-books.

#### SIXTH GRADE.

*Language*.—Special drill upon the connectives, the relative pronouns and the subjunctive mood. Narrative and descriptive composition. Journal.

*Arithmetic*.—Practical problems and drill exercises. Compound numbers continued.

*Geography*.—From maps and descriptive lessons prepared by teacher. Map drawing.

*U. S. History*.—Lessons prepared by teacher.

#### SEVENTH GRADE.

*Language*.—Special drill upon moods and tenses, participle and infinite constructions. Analysis of simple sentences by diagrams. Sentence building. Text-book—Swinton's Language Primer.

*Arithmetic*.—Fractions completed.

*Geography*.—Completed. Text-book—The Electric.

*U. S. History*.—Colonial Period Completed.

#### EIGHTH GRADE.

*Language*.—Composition, new words and idioms; thorough review of connectives, tenses and participles. Analysis by diagram of all the complex sentences. Text-book—Swinton's Language Lessons.

*Arithmetic*.—Practical problems. Text-book—Felter's Intermediate.

*U. S. History*.—Swinton's Condensed completed.

*Physical Geography*.—Lessons prepared by teacher.

#### NINTH GRADE.

*Language*.—Composition; idioms; Construction Exercises, including expansion and contraction of sentences; Analysis and parsing from diagrammed sentences; original sentences, illustrating classification and use; drill in using elements of the sentence. Text-book—Swinton's Language Lessons.

*Arithmetic*.—Percentage and interest. Text-book—Felter's Advanced.

*Physical Geography*.—Warren's Completed.

*History*.—Text-book—Thalheimer's.

*Civil Government*.—Weekly lectures by teacher.

#### TENTH GRADE.

*Language*.—Swinton's Grammar, Ker's Rhetoric. Idioms and punctuation.

*Arithmetic*.—Felter's Advanced Completed.



---

---

REPORT OF THE PRINCIPAL.

---

---

## REPORT OF THE PRINCIPAL.

### *To the Board of Trustees:*

GENTLEMEN--The close of another biennial period brings with it the necessity for a formal review of the work done in that time. That we may know whether we have progressed or retrograded we must keep clearly in mind the end to be sought; the task to be accomplished. This, in short, is to bring about the greatest possible development of intelligence, character, and power in the children under our charge. That the task may be properly appreciated, we must first consider the condition of the deaf without education. Properly speaking, the education of every living human being begins at birth and is only continued upon his entrance to a school. Before that event takes place he has almost unconsciously learned thousands of things that it will be necessary for him to know as he goes through life. Some of these are the result of his own observation and experience, but by far the greater part comes from association and communication with others, older and wiser than himself. He learns at his mother's knee to lip and comprehend language, and through that door comes down to him, without effort on his part, the accumulated wisdom of the ages gone before. Man without language, with spoken articulate language, is but a beast of the field, capable, it may be, of some of the simpler processes of thought, but tied to earth with a chain so gross that he can not hope to escape therefrom. Language is not merely a means of communication; it is a great disciplinary force acting and reacting upon the mind, and it follows as a matter of course that a deaf child, never having had language must lack the mental development that comes with its acquisition. Hence, our children, though they come to us with the same natural vigor of mind that other children possess, yet in actual standing are far below them, both in information and mental activity. Educational methods applicable to children who have only to learn to read and write a language that they already know are entirely out of place with those who have no language at all. All development must be founded upon what has gone before. So in the case of the deaf child we must begin with individual instruction in language. It will readily be seen that the nearer we can come to furnishing a teacher for each pupil the nearer we shall be to an ideal arrangement; and it will also be apparent that classes of the size usual in public schools are not possible. Classes must be small, and they must be provided with teachers of skill and experience in the instruction of the deaf. These teachers must not only possess the ordinary qualifications but must, in addition thereto, have a special training. Persons possessing this special knowledge of the deaf are not numerous, so that a vacancy in our corps of

teachers is not easy to fill. It is, therefore, manifestly the part of good policy to do all that may reasonably be done to retain the services of all teachers who have given satisfactory service. The work of a teacher in a school of this kind is exacting and in many cases harassing. Therefore it cannot be expected that the compensation usually granted in public school work should be sufficient to retain the best talent in this more difficult and exacting field.

Many people, considering the roll of teachers employed and the number of pupils in attendance at this school, are inclined to think that we have an unnecessary number of instructors. The American Annals of the Deaf for January last has a statistical report from every school for the deaf in the United States and Canada, giving the number of pupils in attendance and the whole number of instructors employed in each. Of these eighty-nine schools, fifty-one have more than fifty pupils. Omitting those having less than fifty, I find that not one of the whole number has so many pupils to the teacher as we are compelled to assign in this school. I am sorry to be compelled to state this fact, for as we cannot claim more skill and energy than the teachers of the deaf in other states, it must be evident that we cannot accomplish such results as should be produced.

The deaf population of the state of proper school age may be taken as a constant quantity bearing an unvarying ratio to the whole population. As the growth of population goes on there will certainly be a corresponding increase in the number of children asking instruction at our hands, and in this connection I wish to call attention to the fact that, though, as I have shown our classes are all over-crowded, all of the rooms in the schoolhouse are now fully occupied. We must have more room soon. We cannot well have more teachers until we have some place to put them, and the situation is one of constantly increasing stress.

The law governing this school says that all children of "suitable age" shall be entitled to admission. This "suitable age" has been construed as permitting, if not demanding, the admission of children at the age of five. This construction may be correct, but in many instances it works a positive injury to children of tender years. The only valid excuse that can be offered for taking a child from its home life and out from under the influence of a mother's love is that he will be benefited thereby. In the great majority of cases, deaf children under 7 years of age make very little progress in school. They are incapable of that sustained attention necessary, and they consequently acquire habits of idleness hard to overcome when age has brought increased strength of mind and will. Being removed from home influence at such a tender age, they become weaned from home ties, the effect of which is very apt to be disastrous in after-life. I think that no child who has a home should be admitted to this school under 7 years of age.

The course of study, as outlined in former reports, has remained without material change. Some minor modifications have been made, and an effort put forth to do more in the way of oral teaching than has been done in previous years, but these efforts have been sadly hampered by the great number of pupils necessary to assign to each teacher. It is well known that classes instructed orally must be smaller than those taught by manual methods. Hence every increase in the number of pupils without a corresponding increase in the teaching corps forces us into the use of signs as the only method by

which something like effective work can be done with such great numbers. There is an imperative demand on the part of parents for oral instruction of their children. This demand is not always according to wisdom, but it cannot be ignored, and is usually justifiable to the extent that a thorough and patient trial should be made of every child to test his capacity for speech acquirement. This we have not been able to give in all cases. Not every child can learn to speak sufficiently well to justify continued oral instruction all through his school life, but I hold that we should have the opportunity to demonstrate his aptness in that direction, and if we fail to give that opportunity we have fallen short of our whole duty. Respectfully submitted,

G. L. WYCKOFF,  
*Principal.*



## LIST OF PUPILS

In attendance in the biennial period ending June 30, 1897.

## MALES.

NAME.	POSTOFFICE.	COUNTY.	AGE.	NATIVITY.	CAUSE OF DEAFNESS.
Asnon, Hans	Sioux City	Woodbury	17	Norway	Sickness.
Arch, Ransom	Scranton	Greene	10	Iowa	La grippe.
Baily, George	Sac City	Sac	20	Iowa	Cerebral meningitis.
Baldridge, Milton	Batavia	Jefferson	17	Iowa	Diphtheria.
Barnes, Jesse	Edyville	Wapello	20	Iowa	Spinal fever.
Barrett, Willie	Donnell Bluffs	Pottawattamie	22	Iowa	Lightning.
Beatty, William	Clinton	Clinton	15	Iowa	Unknown.
Benda, Frank	Nevada	Story	24	Iowa	Unknown.
Bentley, Walter	North Buena Vista	Clayton	18	Bohemia	Measles.
Bishop, Mark	Manly	Worth	16	Minnesota	Unknown.
Blake, John	Churdan	Greene	15	Iowa	Sickness.
Blanchard, O. H.	Prescott	Adams	9	Nebraska	Unknown.
Blayne, Clinton	Oslo	Jones	14	Iowa	Born deaf.
Boody, Charles	Hubbard	Hardin	17	Iowa	Spinal fever.
Brown, Herbert	Knox	Fremont	19	Iowa	Spinal meningitis.
Brown, Samuel E.	Mechanicsville	Cedar	15	Iowa	Scarlet fever.
Brown, Barney	Humeston	Wayne	18	Missouri	Brain fever.
Brown, Robert	Council Bluffs	Pottawattamie	19	Iowa	Sickness.
Bryan, Harry Glenn	Council Bluffs	Pottawattamie	10	Iowa	Sickness.
Buck, August	Minden	Pottawattamie	19	Russia	Congenital.
Buell, Horace	Burlington	Iowa	10	Iowa	Born deaf.
Butcher, James	Onawa	Monona	18	Missouri	Born deaf.
Buttenhoff, Henry	Dows	Wright	12	Iowa	Born deaf.
Buttenhoff, Otto	Dows	Wright	10	Iowa	Born deaf.
Byrne, Semerac	Sheldahl	Franklin	19	Iowa	Sickness.
Capp, Joseph	Fort Atkinson	Winnebago	17	Iowa	Sickness.
Carpenter, Ralph	Marion	Penn	17	Iowa	Born deaf.
Clark, George	Miles	Pottawattamie	19	Iowa	Brain fever.
Cleveland, Edwin	Ruffalo Center	Winnebago	16	Iowa	Born deaf.
Clouns, Albert	Osage	Webster	20	Iowa	Fall.
Cochran, Willie	Council Bluffs	Pottawattamie	20	Iowa	Febrile in the head.
Cohen, Jacob	Des Moines	Polk	8	Russia	Spinal meningitis.
Conrad, Edward	Jobes	Audubon	18	Iowa	Sickness.
Conrad, A.	Jobes	Audubon	9	Iowa	Born deaf.
Cotter, John	Winterset	Madison	12	Iowa	Sickness.
Crammer, Willie	Roone	Roone	16	England	Born deaf.
Cupps, Harry	Chermon	Fayette	15	Iowa	Brain fever.
Curtis, Fred	Lyons	Lyons	14	Iowa	Spinal fever.
Daily, James	Loose Tree	Johnson	13	Iowa	Spinal disease.
Denniston, Frank E.	Jepp	Buchanan	11	Iowa	Born deaf.
Dickinson, Ora B.	Pitzer	Madison	11	Iowa	Spinal fever.
Dixon, Fred	Boone	Boone	22	Iowa	Spinal fever.
Dorn, Charles	Orane Creek	Black Hawk	12	Iowa	Unknown.
Dorman, James	Miles	Jackson	12	Iowa	Congenital.
Douglas, Marion	De Soto	Dallas	19	Iowa	Congenital.
Downey, Alva	Valeria	Jasper	19	Iowa	Scarlet fever.
Drugg, Gustave	Forest City	Winnebago	18	Iowa	Born deaf.
Dummermuth, Gotfried	Elgin	Fayette	27	Switzerland	Diseased milk.
De Armond, Walter	Norwalk	Warren	19	Iowa	Brain fever.
De Groot, Garrett	Sioux Center	Sioux	19	Dakota	Born deaf.
Elder, Early B.	Nichols	Muscatine	13	Iowa	Sickness.
Elder, George	Marshalltown	Marshall	22	Iowa	Born deaf.
Ellinger, Orrille	Bellevue	Bellevue	22	Iowa	Sickness.
Fagin, Ben J.	Brough	Dallas	16	Ohio	Sickness.
Fosnot, Robert	Kecoaqua	Van Buren	20	Iowa	Spinal fever.
Frese, Ben	Keosauqua	Jackson	18	Iowa	Brain fever.
Fulkerson, Walter	Bellevue	Jackson	16	Iowa	Spinal meningitis.
Gannon, Charles	Rockham City	Louisa	19	Iowa	Born deaf.
Garland, Edward	Mechanicsville	Maahaska	21	Virginia	From a fall.
Giron, Harvey	Zearing	Story	22	Illinois	Typhoid fever.
Goodman, Hiram	Union	Monona	19	Iowa	Sickness.
Graves, Henry	Melvin	O'Brien	17	Iowa	Born deaf.
Guelfroy, Francis C.	Sioux City	Woodbury	21	Wisconsin	Scarlet fever.
Haines, Fred	Council Bluffs	Pottawattamie	15	Iowa	Sickness.
Hale, Eddie	Fort Dodge	Webster	17	Iowa	Spinal meningitis.
Halpin, John	Des Moines	Polk	21	Missouri	Spinal meningitis.
Hammersley, James	Bladenburg	Benton	13	Iowa	Scarlet fever.
Hansen, Willie	Bladenburg	Benton	13	Iowa	Scarletina.
Hansen, Eric	Adams	Tama	16	Iowa	Unknown.
Harder, Fred	Adams	Tama	20	Germany	Born deaf.
Harper, James	West Union	Fayette	18	Iowa	Sickness.
Harris, Thomas	Thurman	Fremont	19	Iowa	Born deaf.
Harris, J. O.	Lake City	Calhoun	22	Pennsylvania	Born deaf.
Hawkins, Joseph	Denmark	Lee	17	Iowa	Spinal meningitis.
Hays, Albert	Brooks	Adams	17	Iowa	Sickness.
Hays, Clarence	Brooks	Adams	17	Iowa	Born deaf.
Hays, Dennis	Sioux City	Woodbury	19	Iowa	By a fall.
Hays, James	Sioux City	Woodbury	9	Iowa	Unknown.
Hicks, Clyde	Sioux City	Woodbury	9	Iowa	Unknown.
Heller, Caspar	Riceville	Mitchell	9	Iowa	Unknown.
Herbold, Herbert	Newton	Jasper	11	Iowa	Born deaf.
Herbold, Victor	Newton	Jasper	9	Iowa	Born deaf.

[illegible][illegible]



## LIST OF PUPILS—CONTINUED.

## MALES.

NAME.	POSTOFFICE.	COUNTY.	AGE.	NATIVITY.	CAUSE OF DEAFNESS.
Rheets, Ralph	Batavia	Jefferson	9	Iowa	Born deaf.
Rhute, Frank	Holland	Grundy	10	Iowa	Brain fever.
Riesinger, Henry	Tama	Tama	10	Iowa	Spinal fever.
Simmons, Frank	Scranton	Greene	10	Iowa	Born deaf.
Slight, Daniel	Parkersburg	Butler	10	Iowa	Meningitis.
Slickerover, Anton	Orange City	Snow	19	Iowa	Spinal meningitis.
Smith, Walter	Snow City	Woodbury	21	Iowa	Cholera infantum.
Smith, Willie	Delwin	Fayette	17	Iowa	Born deaf.
Smith, Orlando	Osaka	Mahaska	15	Iowa	Spinal disease.
Spotts, Oscar B.	Fort Madison	Lee	10	Nebraska	Spinal fever.
Stacy, Frank	Davenport	Scott	17	Iowa	Born deaf.
Staley, Oren W.	Centerville	Iowa	10	Iowa	By a fall.
Stanke, Charles	Fort Dodge	Webster	18	Iowa	Meningitis.
Stevens, Lee	Delwin	Fayette	15	New York	Brain fever.
Strong, Willie	Council Bluffs	Pottawattamie	19	Missouri	Born deaf.
Sullivan, John	Youngstown	Polk	11	Iowa	Born deaf.
Swanson, Fredolph	Oakville	Polk	11	Iowa	Spinal fever.
Tanner, Louis	Sheldon	O'Brien	11	Iowa	Born deaf.
Teller, Henry	Modale	Harrison	19	Iowa	Whooping cough.
Thompson, John	Ankeny	Polk	23	New York	By a fall.
Trevis, Ray O.	Alpha	Fayette	18	Iowa	Spinal disease.
Upah, James	Chelsea	Tama	15	Iowa	Fever.
Wagner, Harry A.	Belie Plaine	Benton	12	Iowa	Born deaf.
Wagner, Ed	Himesa	Wapello	14	Iowa	Brain fever.
Wagoner, Arthur	Anamosa	Jones	18	Iowa	Scarlet fever.
Walgrin, Frank	Saline	Jefferson	25	Iowa	Fever.
Walker, Arnold	Clinton	Clinton	15	Illinois	Unknown.
Weaver, Charles L.	Bradgate	Humboldt	8	Iowa	Unknown.
West, Hubert	Baker	Jefferson	9	Iowa	Fever.
Westley, John	Nichols	Muscatine	22	Germany	Sickness.
White, Laranza	Beacon	Mahaska	14	Iowa	Gathering in the head.
Whitmer, Jesse	Hillsdale	Mills	20	Iowa	Brain fever.
Wimer, Gibson	Wells	Wapello	16	Iowa	Spinal fever.
Wilson, William	Dairyville	Grundy	15	Iowa	Scarlet fever.
Woods, Miron	Dairytown	Benton	20	Iowa	Born deaf.
Worth, Frank E.	Waverly	Wapello	20	Iowa	Gathering in the head.
Woodworth, Fred	Farmington	Van Buren	20	Missouri	Gathering in the head.
Wright, Guy W.	East Peru	Madison	8	Iowa	Cold.
Wynore, Frank M.	Hepburn	Page	17	Iowa	Gathering in the head.

IOWA SCHOOL FOR THE DEAF.

[33]

## FEMALES.

Adon, Henrietta	Boonsboro	Boone	20	Iowa	Brain fever.
Alliband, Rebecca	Griswold	Cass	20	Pennsylvania	Unknown.
Anderson, Hannah	Bellevue	Jackson	13	Iowa	Born deaf.
Anderson, Troy	Des Moines	Polk	23	Iowa	Spotted fever.
Anderson, Minnie	Munterville	Jefferson	20	Iowa	Born deaf.
August, Lizzie	Yairfield	Linn	20	Iowa	Scarlet fever.
Baertel, Mary	Cedar Rapids	Marshall	11	Iowa	Croup.
Baker, Bessie	Gilman	Monroe	12	Iowa	Born deaf.
Barnes, Kate	Frederic	Audubon	13	Iowa	Brain fever.
Barthelsson, Annie	Shelby	Johnson	20	Iowa	Born in head.
Barrett, Mabel	Rhodes	Marshall	20	Iowa	Brain fever.
Benesch, Eleanor	Shenandoah	Greene	10	Kansas	Sickness.
Berry, Kate	Churdan	Greene	23	Iowa	Sickness.
Bickel, Ethel	Booneville	Iowa	17	Iowa	Congenital.
Blake, Bessie	Lake Mills	Winebag	10	Iowa	Congenital.
Blake, Alice	Mitchellville	Polk	12	Iowa	Spinal fever.
Boone, Hattie	Lyons	Scott	12	Iowa	Sickness.
Bourman, Lela	Cedar Rapids	Linn	17	Illinois	Congenital.
Brockey, Tommie	Anta	Cass	12	Iowa	Born deaf.
Brothers, Mary	West Des Moines	Polk	12	Iowa	Born deaf.
Brown, Lottie	Des Moines	Hardin	18	Iowa	Scarlet fever.
Burill, Bessie	Hubbard	Johnson	23	Iowa	Sickness.
Cabalka, Mary	Dunlap	Polk	23	Iowa	Scarlet fever.
Callahan, Mary	Des Moines	Polk	12	Iowa	Unknown.
Chesley, Alice	Castana	Monona	18	Germany	Born deaf.
Coile, Edna	Davenport	Buena Vista	20	Illinois	Fever.
Coillier, Mabel	Garnaville	Clayton	30	Iowa	Sickness.
Crosby, Sadie	Buffalo Center	Winnebago	19	Illinois	Unknown.
Cunard, Helen	Snow City	Woodbury	13	Iowa	Spinal meningitis.
Daily, Kate	Cedar Rapids	Linn	13	Iowa	Sickness.
Davis, Mabel	Crane Creek	Clark	18	Iowa	Unknown.
Dechner, Emmell	New Market	Taylor	20	Iowa	Born deaf.
Dehn, Lena	Cedar Rapids	Story	25	Ohio	Brain fever.
Dempsey, Lydia	Rolland	Pottawattamie	20	Iowa	Spinal meningitis.
Dickover, Mabel	Council Bluffs	Crawford	20	Iowa	Sickness.
Dick, Gerrie	Council Bluffs	Pottawattamie	16	Iowa	Spinal meningitis.
Dorn, Emma	Marshalltown	Polk	26	Iowa	Unknown.
Dougherty, Lulu	Victor	Iowa	19	Iowa	Born deaf.
Dougherty, Lulu					
Eddy, Clara					
Eisel, Lizzie					
Fairbanks, Ruth					
Farquhar, Pearl					
Fibby, Mary					
Floerichinger, Frances					

1887.]

LIST OF PUPILS.

41



## LIST OF PUPILS—CONTINUED.

## FEMALES.

NAME.	POSTOFFICE.	COUNTY.	Age.	NATIVITY.	CAUSE OF DEAFNESS.
Fretwell, Oda M.	Dedham.	Carroll.	14	England.	Scarlet fever.
Fritz, Mabel.	Sigourney.	Rock.	12	Iowa.	Whooping cough.
Gifford, Rosa.	Mitchell.	Mitchell.	20	Iowa.	Born deaf.
Gifford, Addie.	Mitchell.	Mitchell.	18	Iowa.	Typhoid fever.
Gifford, Maggie.	Mitchell.	Mitchell.	15	Iowa.	Unknown.
Gifford, Lattie.	Mitchell.	Mitchell.	10	Iowa.	Born deaf.
Gifford, Kmie.	Mitchell.	Mitchell.	9	Iowa.	Unknown.
Gohlingheist, Nellie.	Council Bluffs.	Pottawattamie.	17	Iowa.	Sickness.
Gorfin, Sarah.	Des Moines.	Polk.	16	Iowa.	Unknown.
Gough, Amy E.	Rockwell.	Cerro Gordo.	11	Iowa.	Lung fever.
Gregar, Mathilda.	Shueville.	Johnson.	15	Iowa.	Born deaf.
Hargens, Caroline.	Battle Creek.	Ida.	12	Iowa.	Born deaf.
Hastings, Edith O.	Grand Junction.	Greene.	11	Illinois.	Born deaf.
Hawk, Elva O.	North Liberty.	Johnson.	11	Iowa.	Whooping cough.
Hiles, Ethel.	Spencer.	Woodbury.	15	Dakota.	Typhoid fever.
Hiel, Rosa.	Cedar Rapids.	Linn.	18	Iowa.	Unknown.
Hilton, Hulda.	Fort Dodge.	Webster.	17	Norway.	Sickness.
Hutchison, Polly.	Waverly.	Remer.	16	Iowa.	Spinal meningitis.
Hoch, Edna.	Dedham.	Carroll.	13	Iowa.	Whooping cough.
Hoffman, Clara V.	Bouton.	Dallas.	11	Kansas.	Spinal fever.
Hull, Leona.	Sioux City.	Woodbury.	9	Iowa.	Unknown.
Hunt, Mary.	Sheldon.	O'Brien.	12	Iowa.	Strong medicine.
Hunt, Jennie Bell.	Sioux City.	Woodbury.	19	Nebraska.	Quinsy.
Hutchison, Polly.	Sioux City.	Woodbury.	19	Nebraska.	Born deaf.
Ingham, Oeda.	Fairfield.	Jefferson.	13	Missouri.	Brain fever.
Jamison, Carrie.	Kecoaqua.	Van Buren.	16	Iowa.	Sickness.
Johnson, Gertrude.	Climbing Hill.	Woodbury.	16	Iowa.	Born deaf.
Johnson, Ellie.	Climbing Hill.	Woodbury.	7	Iowa.	Born deaf.
Jones, Prudy.	Manly.	Worth.	16	Iowa.	From a fall.
Jordan, Nettie.	Sioux Falls.	Hardy.	15	Iowa.	Scarlet fever.
Kerst, Essie.	Iowa Falls.	Hardy.	22	Iowa.	Typhoid fever.
Kellogg, Nerva.	Bradgate.	Humboldt.	19	Iowa.	Sickness.
Kellogg, Nellie.	Sioux City.	Woodbury.	6	Iowa.	Born deaf.
Kellogg, Nellie.	Winchester.	Van Buren.	25	Iowa.	Unknown.
Lang, Catherine.	Bellevue.	Jackson.	15	Illinois.	Unknown.
Larson, Christina.	Edwards.	Payette.	21	Iowa.	Scarlet fever.
Laur, Lucile.	Le Mars.	Plymouth.	21	Iowa.	Born deaf.
Lessinger, Nettie.	Irwin.	Shelby.	22	Iowa.	Scrofula.
Libert, Mamie.	Sioux City.	Woodbury.	18	Iowa.	Spinal meningitis.
Lundgreen, Elvera.	Stanton.	Montgomery.	15	Iowa.	Born deaf.
Le Valley, Hattie.	Dayton.	Worth.	23	Iowa.	Inflammation of ear.
Mainke, Augusta.	Polk.	Polk.	26	Illinois.	Spasms.
Maland, Julia.	Ellsworth.	Hamilton.	16	Norway.	Scarlet fever.
Maloney, Maggie.	Riggs Station.	Clinton.	24	Iowa.	Sickness.
Martine, Corrie.	Sellers.	Dubuque.	18	Iowa.	Born deaf.
Masters, Carrie.	Hoprig.	Emmet.	25	Iowa.	Spinal fever.
Mikeah, Mary.	Conover.	Boone.	13	Iowa.	Croup.
Montgomery, Jessie B.	Boone.	Calhoun.	9	Iowa.	Born deaf.
Morrison, Ida.	Lake City.	Sac.	9	Iowa.	Measles.
Murray, Mattie.	Auburn.	Plymouth.	18	Missouri.	Brain fever.
Murray, Lizzie.	Kingsley.	Plymouth.	11	Iowa.	Congenital.
McLeesky, Edna.	Brooklyn.	Polk.	13	Iowa.	Born deaf.
McLaren, Nettie.	Brooklyn.	Woodbury.	18	Iowa.	Unknown.
McNear, Della.	Anthos.	Woodbury.	18	Iowa.	Born deaf.
Naughton, Margaret.	Council Bluffs.	Wapello.	9	Illinois.	Spasms.
Nystrom, Sophia.	Mechanicsville.	Cedar.	14	Iowa.	Spinal meningitis.
Ostotts, Alice.	Fertile.	Polk.	16	Iowa.	Spinal fever.
Orcutt, Helen.	Webster City.	Hamilton.	20	Iowa.	Spinal fever.
Ostrand, Mary.	Dubuque.	Dubuque.	21	Iowa.	Brain fever.
Ott, Annie.	Belmond.	Boone.	19	Iowa.	Spinal fever.
Pais, Annie.	Callender.	Webster.	19	Iowa.	Born deaf.
Payne, Grace.	Russell.	Lucas.	13	Iowa.	Gold.
Peterson, Annie.	Portsmouth.	Harris.	13	Iowa.	Scarlet fever.
Platts, Edith.	Cedar Rapids.	Linn.	15	Iowa.	Congenital.
Pumpler, Bell.	Carroll.	Guthrie.	21	Iowa.	Measles.
Pumpley, Mary.	Guthrie Center.	Guthrie.	12	Iowa.	Scarlet fever.
Porter, Lizzie.	Neveda.	Sury.	12	Iowa.	Lung disease.
Porter, Nellie.	Shenandoah.	Page.	11	Iowa.	Rheumatic fever.
Rhoads, Lella.	Noville.	Woodbury.	15	Wisconsin.	Whooping cough.
Rhoads, Emma.	Oakland.	Pottawattamie.	27	Iowa.	By a fall.
Rhoads, Elsie.	Rockwell.	Dubuque.	20	Iowa.	Born deaf.
Ridwell, Beatie.	Rockwell.	Woodbury.	27	Iowa.	Born deaf.
Ryan, Stacie.	Sioux City.	Woodbury.	9	Iowa.	Typhoid fever.
Rhodes, Flor.	Garnet.	Hancock.	12	Iowa.	Unknown.
Schultz, Jonannah.	Edison.	Cravford.	12	Germany.	Scarlet fever.
Schmies, Rosa.	Burlington.	Des Moines.	12	Germany.	Spinal meningitis.
Seinensohn, Edna.	Marshalltown.	Marshall.	24	Iowa.	By a fall.
Siegar, Annie.	Cedar Rapids.	Wapello.	14	Iowa.	Born deaf.
Sims, Edith M.	Osweeth.	Payette.	19	Iowa.	Born deaf.
Smith, Annie.	Newell.	Dakota.	19	Iowa.	Born deaf.
Smith, Mary.	Newell.	Lucas.	9	Iowa.	Born deaf.
Smith, Jennie B.	Marengo.	Iowa.	17	Iowa.	Measles.
Spangrove, Johanna.	Audubon.	Adair.	17	Iowa.	Spinal meningitis.
Stafford, Carrie.	Council Bluffs.	Pottawattamie.	17	Iowa.	Spinal meningitis.
Stageman, Ada.	Council Bluffs.	Pottawattamie.	17	Iowa.	Spinal meningitis.

LIST OF PUPILS—CONTINUED.  
FEMALES.

NAME.	POSTOFFICE.	COUNTY.	NATIVITY.	CAUSE OF DEAFNESS.
Stanley, Edna	Boone	Boone	Iowa	Sickness.
Steffensen, Nina	Edmon	Albany	Iowa	Sickness.
Sullivan, Mary	Youngtown	Albany	Iowa	Born deaf.
Taylor, Grace	Modale	Polk	Iowa	Born deaf.
Teller, Bertha	Modale	Harrison	Iowa	Unknown.
Teller, Lillie	Modale	Harrison	Iowa	Unknown.
Trumbull, Clara	Val	Grassford	Iowa	Mumps.
Trumble, Kate	Lamont	Rushman	Iowa	Spotted fever.
Wallace, Anna	Franklin Mills	Des Moines	Iowa	Gathering in the head.
Wallington, Bertha	Glenwood	Des Moines	Illinois	Unknown.
Walling, Sarah	Council Bluffs	Des Moines	Iowa	Unknown.
Wandling, Elsie	Council Bluffs	Pottawattamie	Iowa	Sickness.
Wandling, Thelma	Wassalo	Pottawattamie	Nebraska	Sickness.
Ward, L. Nellie	Kerrville	Polk	Iowa	Born deaf.
Waschborsky, Emma	Des Moines	Polk	Iowa	Born deaf.
Waschborsky, Mary	Des Moines	Polk	Iowa	Born deaf.
Wicks, Goldie	Arden	Polk	Iowa	Measles.
Williams, Maud	Becktown	Polk	Iowa	Measles.
Wilson, Lorena	Becktown	Polk	Iowa	Measles.
Winkler, Edith	Becktown	Polk	Iowa	Measles.
Wirt, Lydia	Becktown	Polk	Iowa	Measles.
Yeston, Edith	Becktown	Polk	Iowa	Measles.

## STATEMENT

Showing expenditures during the biennial period ending June 30, 1897.

Date.	Warrent.	TO WHOM PAID.	ON WHAT ACCOUNT.	Amount.
1896.				
June	7143	Western Union Telegraph Co. ....	Telegrams .....	.85
	7146	Pryor Bros. ....	Office supplies .....	9.75
	7147	H. A. Cox. ....	Coke .....	2.00
	7148	Dyer, Wells & Co. ....	Farm supplies .....	6.35
	7149	H. Kohstamm & Co. ....	Paint supplies .....	4.15
	7150	Council Bluffs Paint, Oil & Glass Co.	Paint supplies .....	91.75
	7151	Standard Oil company. ....	Oil .....	30.00
	7152	Thomas Bowman, postmaster .....	Postage .....	10.75
	7153	M. E. Weatherline .....	Stabling .....	188.03
	7154	John Benn & Co. ....	Dry goods and clothing .....	23.97
	7155	J. M. Potts .....	Library supplies .....	1.00
	7156	B. H. Kohlberg .....	Veterinary service .....	1.30
	7157	United States supply company .....	Repair supplies .....	265.92
	7158	Council Bluffs Coal and Ice Co. ....	Coal .....	25.14
	7159	J. H. Snyder. ....	Groceries and provisions .....	12.75
	7160	Shugart & Urran .....	Seeds .....	31.69
	7161	Shugart & Urran .....	Stationery .....	173.31
	7162	D. W. Bushong .....	Groceries .....	2.50
	7163	Uroneweg & Schoentzen .....	Carpenter shop supplies .....	61.44
	7164	Kennard Glass and Paint company .....	Engineer's supplies .....	11.88
	7165	Crane company .....	Shoe shop supplies .....	12.39
	7166	G. Brandenbarg & Co. ....	House supplies .....	5.74
	7167	J. L. Bradles & Son .....	Printing office supplies .....	24.15
	7168	Carpenter Paper company .....	Hardware .....	458.68
	7169	Carter Cottrell Hardware company .....	Laundry supplies .....	20.59
	7170	W. A. Page Soap company .....	Meats .....	95
	7171	J. H. Pace .....	Engineer's supplies .....	8.50
	7172	Stephen Bros. ....	Expressage .....	1.13
	7173	Adams Express company .....	Library supplies .....	.53
	7174	Morhouse & Co. ....	Art room supplies .....	1.30
	7175	H. C. Smith & Co. ....	Freight .....	1.57
	7176	Chicago & North-Western Ry. Co.	Freight .....	1.50
	7177	Chicago, Milwaukee & St. P. Ry. Co.	Keys .....	.45
	7178	Wilson Bohannan .....	Books .....	1.58
	7179	Henry T. Thomas & Co. ....	Freight .....	19.38
	7180	Omaha St. Louis Railway Co. ....	Printing office supplies .....	28.45
	7181	American Type Foundry company .....	Drugs, etc. ....	24.51
	7182	Harle Haas & Co. ....	Shoes .....	73.60
	7183	Clini & Syers .....	Electrical supplies .....	7.55
	7184	Western Electrical Supply Co. ....	Flour .....	53.00
	7185	J. C. Hoffmayr .....	Farm supplies .....	82.11
	7186	D. S. Pile .....	Flour and feed .....	166.88
	7187	Crystal Mill and Grain company .....	General supplies .....	4.38
	7188	J. B. Atkins .....	Groceries and provisions .....	22.05
	7189	Eli Brown .....	Stationery .....	8.27
	7190	D. W. Rashnell .....	Hardware .....	220.72
	7191	P. C. De Val .....	Hardware .....	2.50
	7192	Dungan & Son .....	Groceries .....	125.79
	7193	Stewart Bros. ....	Clothing and dry goods .....	4.40
	7194	Fowler, Dick & Walker .....	Library supplies .....	6.34
	7195	O. C. Thompson .....	Miscellaneous accounts .....	125.80
	7196	Henry W. Rothert, superintendent .....	Milk cans .....	96.12
	7197	The Sharpless company .....	Clothing .....	9.34
	7198	Metcalfe Bros. ....	House supplies .....	8.15
	7199	Koch, A. B. company .....	House supplies .....	8.15



## STATEMENT—CONTINUED.

Date.	Warrant.	TO WHOM PAID.	ON WHAT ACCOUNT.	Amount.
1895. June..	7200	W. A. Maurer.	Dining room supplies.	\$ 21.81
	7201	Knipke-Shugart company.	Hardware.	7.53
	7202	Boardman Bros. & Co.	Butter.	197.60
	7203	Nebraska Telephone company.	Rent & outside connections.	19.15
	7204	Clark & Wetzel.	Dining room supplies.	1.48
	7205	Hauge & Olson.	Repairs.	1.60
	7206	Drs. Hanchett & Smith.	Medical attendance.	1.00
	7207	George A. Howland.	Lumber.	1.16
	7208	Henry W. Rothert, superintendent.	Pay roll officers & employees.	1,660.00
	7209	Fleischmann & Co.	Yeast.	10.19
	7210	American Blount Mfg. company.	Crackers.	15.90
	7211	D. S. Pile.	Farm supplies.	1.25
	7212	J. C. V. Hany.	Flour.	85.60
	7213	David Bradley & Co.	Repairs.	1.60
	7214	OConnell Bluffs Carpet company.	House supplies.	31.42
	7215	E. O. Brackley.	House and school supplies.	4.90
	7216	Western Electrical Supply Co.	Electrical supplies.	11.07
	7217	Harle, Haas & Co.	General supplies.	11.07
	7218	Stewart Bros.	Groceries.	104.99
	7219	C. B. Forby.	Repairs.	12.65
	7220	Crystal Mill and Grain company.	Flour and feed.	66.65
	7221	Mrs. M. Pfeiffer.	Hats.	125.35
	7222	The Gillette Sign Works.	Signs.	1.00
	7223	M. E. Weatherbee.	Stabling.	14.75
	7224	Ell Brown.	Groceries and provisions.	234.49
	7225	Henry W. Rothert, superintendent.	Wac-hansons accounts.	229.32
	7226	Drs. Hanchett & Smith.	Medical attendance.	37.00
	7227	George A. Howland.	Lumber.	41.36
	7228	The Sharless company.	Milk cans.	1.00
	7229	W. A. Page & son company.	Laundry supplies.	22.29
	7230	W. A. Goehring.	Horse shoeing.	12.00
	7231	Knipke-Shugart company.	Hardware.	42.00
	7232	D. W. B. Hall.	Stationery.	13.79
	7233	Clint S. Byers.	Shoeing.	44.40
	7234	United Typewriter and Supply Co.	Typewriters.	407.00
	7235	J. H. Pace.	Meats.	400.88
	7236	W. A. Maurer.	Dining room supplies.	22.15
	7237	Charles Lee.	Groceries.	240.00
	7238	Groneweg & Schoentgen.	Lamps.	36.35
	7239	General Incandescent Arc Light Co.	Shoe shop supplies.	1.70
	7240	G. Brandenburg & Co.	House supplies.	7.54
	7241	A. J. Fuller & Co.	Hardware.	1.05
	7242	Carter-Dottrell Hardware Co.	Wine supplies.	1.05
	7243	Wm. Abrams.	Lamps.	5.50
	7244	E. A. Bea.	Hardware.	2.16
	7245	J. B. Atkins.	General supplies.	26.99
	7246	Henry Kingston.	Plants.	3.00
	7247	Dr. Henry Babcock.	Veterinary service.	20.00
	7248	C. & N. W. Ry. Co.	Freight.	3.82
	7249	T. J. Dally.	Lettering diplomas.	1.50
	7250	Hammer Lumber Co.	Lumber.	55.15
	7251	Metcalfe Bros.	Clothing.	15.15
	7252	John Beno & Co.	Dry goods and clothing.	157.05
	7253	Adams Express Co.	Expressage.	.79
	7254	American Express Co.	Expressage.	.49
	7255	Thomas Bowman, postmaster.	Postage.	39.00
	7256	S. T. McAtee.	Groceries and provisions.	12.40
	7257	B. M. Sargent.	General supplies.	2.00
	7258	O. B. Palat, Oil and Glass Co.	House supplies.	3.00
	7259	Standard Oil Co.	Oils.	19.76
	7260	Petersen.	Repairs.	2.00
	7261	P. O. DeVal.	Hardware.	25.48
	7262	O. B. Coal and Ice Co.	Coal.	112.68
	7263	Western Union Telegraph Co.	Long distance.	2.00
	7264	J. P. Weaver.	Mason work, etc.	40.35
	7265	Chapman & Smith Co.	Bakery supplies.	1.90
	7266	S. S. Kettner.	Furniture.	9.00
	7267	Nebraska Telephone Co.	Rent & outside connections.	17.83
	7268	J. L. Bradfield & Son.	House supplies.	26.23
	7269	George Carter.	Telephone supplies.	1.60
	7270	Mrs. M. Pfeiffer.	Hats.	2.30
	7271	J. R. McPherson.	Flower plants.	9.90

## STATEMENT—CONTINUED.

Date.	Warrant.	TO WHOM PAID.	ON WHAT ACCOUNT.	Amount.
1895. June..	7272	Carpenter Paper company.	Printing office supplies.	\$ 21.56
	7273	E. O. Smith.	Blackboard.	3.75
	7274	J. E. Rice.	Trees.	30.21
	7275	Henry W. Rothert, superintendent.	Pay roll officers & employees.	1,281.43
	7276	Mrs. M. Page.	Yeast.	10.00
	7277	Peter Heckerberg & Co.	Garden supplies.	11.47
	7278	E. D. Salt & Co.	Hay.	16.49
	7279	C. A. Lock & Co.	Disinfectant powder.	7.03
	7280	Iowa Soldier & Sundry Merchants.	Coat of arms.	12.00
	7281	Boardman Bros. & Co.	Produce.	214.82
	7282	W. G. Young.	Gymnasium supplies.	1.15
	7283	American Type Foundry Co.	Printing office supplies.	14.22
	7284	Carpenter Paper company.	Printing office supplies.	13.96
	7285	Standard Oil company.	Printing office supplies.	17.44
	7286	Fleischmann & Co.	Oils.	1.75
	7287	Chicago & North-Western Ry. Co.	Freight.	1.41
	7288	Ell Brown.	Groceries and provisions.	109.88
	7289	Drs. Hanchett & Smith.	Medical attendance.	35.00
	7290	Schultz & Hill.	Repairs.	11.45
	7291	Western Union Telegraph Co.	Telegrams.	3.61
	7292	W. A. Maurer.	Dining room supplies.	18.56
	7293	P. C. DeVal.	Hardware.	24.38
	7294	George A. Howland.	Lumber.	1.91
	7295	N. H. Palmer.	Boys.	6.80
	7296	J. F. Wilcox.	Plants, etc.	70.49
	7297	Powder, Dick & Walker.	Meats.	311.36
	7298	J. H. Pace.	Dry goods and clothing.	24.00
	7299	Mueller Piano and Organ company.	Rent of piano.	10.15
	7300	D. W. Bushnell.	Stationery.	172.17
	7301	Henry W. Rothert, superintendent.	Postage.	16.25
	7302	Chicago & North-Western Ry. Co.	Railroad fare per pupils.	10.93
	7303	Thomas Bowman, postmaster.	Expressage and c. o. d.	17.31
	7304	Adams Express company.	Miscellaneous accounts.	245.00
	7305	Henry W. Rothert, superintendent.	Spring.	1.38
	7306	Goodyear Rubber company.	Carpenter shop supplies.	.12
	7307	Harle Haas & Co.	Stabling.	1.00
	7308	M. E. Weatherbee.	Radiator brushes.	1.00
	7309	J. C. Hix.	Groceries.	139.69
	7310	Groneweg & Schoentgen.	General supplies.	1.00
	7311	J. B. Atkins.	House supplies.	5.50
	7312	W. W. Chapman.	Expressage.	.60
	7313	American Express company.	Veterinary service.	22.83
	7314	Dr. H. C. Babcock.	Provision.	22.83
	7315	O. B. Randlett.	Engineer's supplies.	38.35
	7316	Crane company.	Coal.	114.50
	7317	Council Bluffs Coal and Ice Co.	Service.	100.00
	7318	A. T. Pickinger.	Ice cream.	4.50
	7319	Perley Candy Kitchen.	Freight.	1.26
	7320	O. B. & Q. Ry. Co.	Freight.	26.13
	7321	Spaargan Iron Works.	Provisions.	26.10
	7322	J. H. Pace.	Potatoes.	21.25
	7323	O. Younkerman & Co.	Horse shoeing.	1.50
	7324	W. A. Goehring.	Farm supplies.	1.05
	7325	David Bradley & Co.	House supplies.	15.23
	7326	O. B. Palat, Oil and Glass Co.	Rent & outside connections.	19.03
	7327	Nebraska Telephone Co.	Globes.	9.50
	7328	Edward Glass and Paint Co.	House supplies.	25.42
	7329	Stephan Bros.	Pipe and valves.	66.63
	7330	Crane Co.	Garden supplies.	1.00
	7331	Christie & Co.	Repairs.	5.50
	7332	Hauge & Olson.	Soap.	20.00
	7333	Perley & Templeton.	Hardware.	1.50
	7334	Orr & Lockett Hardware Co.	House supplies.	8.50
	7335	Bussell & Co.	Strawberries.	23.06
	7336	J. H. Palmer.	Dry goods and clothing.	160.05
	7337	John Beno & Co.	Miscellaneous accounts.	10.05
	7338	Henry W. Rothert, superintendent.	Shugart & Guran.	32.00
	7339	McCormick Harvesting Machine Co.	Mower.	1.25
	7340	D. W. Bushnell.	Stationery.	1.25
	7341	C. B. Palat, Oil and Glass Co.	Paint supplies.	48.32
	7342	J. B. Atkins.	Paints & general supplies.	3.00
	7343	A. Basmann.	Horse shoeing.	3.00



## STATEMENT—CONTINUED.

Date.	Warrant.	TO WHOM PAID.	ON WHAT ACCOUNT.	Amount.
1895				
Aug.	7316	W. W. Chapman	Art supplies	\$ 8.75
	7317	W. A. Goehring	Horsehoeing	1.00
	7318	Morsehead & Co.	Book-binding and books	31.75
	7319	J. H. Pace	Meats	135.21
	7320	S. S. Keller	Furniture	3.50
	7321	John Benoit & Co.	Dry goods and clothing	34.01
	7322	P. B. Wind	Doors, etc.	19.00
	7323	Groneweg & Schoentgen	Groceries	171.52
	7324	Crystal Mill and Grain Co.	Flour	19.75
	7325	S. T. McAtee	Groceries	34.15
	7326	Fowler, Dick & Walker	Dry goods	11.50
	7327	J. O. Bixby	Steam fitting	5.29
	7328	Drs. Hanchitt & Smith	Medical attendance	15.00
	7329	J. Leitender	Bread	9.50
	7330	Standard Oil	Oil	36.44
	7331	George A. Houghland	Lumber	164.21
	7332	Stephen Bros.	Gas fixtures	12.48
	7333	Dinges & Conrad Co.	Roses	8.68
	7334	P. G. DeVol	Hardware	50.29
	7335	Nebraska Telephone Co.	Rent & outside connect'ns.	15.43
	7336	J. C. Mayne	Services	50.00
	7337	Crane Co.	Pipe and fitting	31.78
	7338	H. J. Palmer	Fruits	11.20
	7339	Vogeler & Son	Groceries	6.50
	7340	Ell Brown	Groceries	117.27
	7341	Q. B. Coal and Ice Co.	Coal	63.24
	7342	Charles Swaine	Hardware	6.15
	7343	Chapman & Smith Co.	Bakery supplies	1.20
	7344	Boston Store	Dry goods	7.75
	7345	J. F. Wilcox	Flowers	4.50
	7346	Western Electrical Supply Co.	Electric light supplies	24.19
	7347	Darborn Chemical Works	Boiler compound	27.27
	7348	R. M. Sargent	Clothing	10.00
	7349	Harle, Haas & Co.	Drugs	1.92
	7350	Paul G. Snyder	Drugs	29.50
	7351	Schultz & Hill	Repairs	5.00
	7352	J. C. Vaughn	Seeds	7.45
	7353	Walton Bros.	Harness	2.00
	7354	W. A. Maurer	Awning	6.00
	7355	M. J. Lampe	Pay roll, officers & employes	1,011.65
	7356	Henry W. Rothert, superintendent	Labor	70.00
	7357	G. C. Taylor	Labor	50.75
	7358	J. A. Relator	Stabling	4.25
	7359	M. E. Weatherben	Stabling	2.50
	7360	A. Schott	Janitors	6.25
	7361	The Machinists Supply Co.	Engineer's supplies	1,011.13
	7362	Henry W. Rothert, superintendent	Pay roll, officers & employes	65.75
	7363	A. Fish & Co.	Ice cream freezer	1,749.02
	7364	Henry W. Rothert, superintendent	Pay roll, teachers	1,490.26
	7365	Henry W. Rothert, superintendent	Pay roll, officers & employes	20.00
	7366	G. C. Taylor, labor	Labor	138.14
	7367	Council Bluffs Coal & Ice Co.	Coal	1.05
	7368	Shugart & Duran	Seeds	66.32
	7369	David Bradley & Co.	Pipe and fitting	30.25
	7370	Peter Henderson & Co.	Seeds	32.20
	7371	The Baum Iron Works Co.	Engineer's supplies	17.15
	7372	A. J. Faller & Co.	Tolice	160.25
	7373	Sprague Iron Works Co.	Repairs	2.00
	7374	American Express Co.	Expressage	2.95
	7375	S. T. Medley	Groceries	15.00
	7376	Dr. H. O. Babcock	Veterinary service	3.75
	7377	The New Nonpareil Co.	Office supplies	40
	7378	The Nonpareil Printing Co.	Office supplies	27.25
	7379	Boose Printing Co.	Wall paper	2.50
	7380	Henry Lehmann	Furniture	87.50
	7381	S. S. Keller	Farm supplies	5.70
	7382	Van Brunt & Walt	Engineer's supplies	123.91
	7383	Ulrich Steam Gauge Co.	Repairs	146.10
	7384	J. H. Long	Repairs	2.00
	7385	N. W. Williams	Repairs	30.65
	7386	N. W. Williams	Repairs	30.65
	7387	Concell Bluffs Roofing & Cornice Co.	Repairs	30.65

## STATEMENT—CONTINUED.

Date.	Warrant.	TO WHOM PAID.	ON WHAT ACCOUNT.	Amount.
1895.				
Oct.	7419	H. B. Palmer & Co.	Paints	\$ 2.50
	7420	W. D. Wilcox	Hoops	12.00
	7421	American Annals of the Deaf	Subscription	3.50
	7422	C. B. & Q. Ry. Co.	Freight	11.25
	7423	Fowler, Dick & Walker	Dry goods	17.00
	7424	Council Bluffs Paint, Oil & Glass Co.	Paint supplies	15.25
	7425	Nebraska Telephone company	Rent & outside connections	0.27
	7426	Chicago, Rock Island & P. Ry. Co.	Freight	8.45
	7427	Emphie-Shugart company	Hardware	8.45
	7428	John Beno & Co.	Dry goods	24.15
	7429	Standard Oil Company	Oil	12.00
	7430	Harle, Haas & Co.	Drugs, etc.	4.00
	7431	M. E. Weatherben	Stabling	12.87
	7432	W. A. Page Soap company	Soap chips	151.78
	7433	J. H. Pace	Meats	1.25
	7434	Western Union Telegraph Co.	Telegrams	3.00
	7435	W. A. Goehring	Horsehoeing	1.00
	7436	Crystal Mill and Grain company	Flour	15.10
	7437	Crystal Mill and Grain company	Flour	136.14
	7438	Groneweg & Schoentgen	Groceries	30.25
	7439	George A. Houghland	Lumber	38.75
	7440	Western Electrical supply Co.	Stall mery	100.45
	7441	R. V. Bushnell	Groceries	71.91
	7442	Ell Brown	Electric light supplies	97.14
	7443	W. A. Maurer	Bread	10.90
	7444	James Lutzinger	General supplies	47.50
	7445	J. B. Atkins	Postage	2.66
	7446	Thomas Bowman, postmaster	Freight	5.70
	7447	Chicago & North-Western Ry. Co.	Freight	34.46
	7448	Chicago, Rock Island & P. Ry. Co.	Freight	15.45
	7449	P. G. DeVal	Hardware	18.00
	7450	A. G. Spaulding & Bros.	Gymnasium supplies	33.34
	7451	A. G. Spaulding & Bros.	Gymnasium supplies	24.40
	7452	A. G. Spaulding & Bros.	Gymnasium supplies	153.33
	7453	A. G. Spaulding & Bros.	Gymnasium supplies	9.25
	7454	A. G. Spaulding & Bros.	Gymnasium supplies	9.25
	7455	A. G. Spaulding & Bros.	Gymnasium supplies	6.67
	7456	Henry W. Rothert, superintendent	Miscellaneous accounts	377.46
	7457	Schultz & Hill	Repairs	4.50
	7458	Erasm & Decker & Brock Co.	Reels	4.00
	7459	Schultz & Hill	Repairs	5.10
	7460	American Biscuit Manufacturing company	Medical supplies	96.50
	7461	John Beno & Co.	Gymnasium supplies	1.58
	7462	Charles Swaine	Clothing and dry goods	150.32
	7463	Nebraska Telephone company	Repairs	4.65
	7464	Wickham Bros.	Rent & outside connections	18.73
	7465	M. Russell & Co.	Sand	2.00
	7466	J. C. Hoffman & Bros.	House supplies	2.68
	7467	A. B. Jacquemier & Co.	Floor	55.20
	7468	American Biscuit Mfg. company	House supplies	6.25
	7469	J. B. Atkins	Crackers	16.43
	7470	Crystal Mill and Grain company	General supplies	19.65
	7471	Stewart Bros.	Flour	34.00
	7472	A. Maue	Groceries	104.24
	7473	W. A. Goehring	Dining room supplies	56.56
	7474	Council Bluffs Paint, Oil & Glass Co.	Horsehoeing	7.00
	7475	The Purdie Furniture Co.	House supplies	15.75
	7476	Richmond Safety Gate Co.	Furniture	18.00
	7477	H. Rohstamm & Co.	Elevator gates	165.00
	7478	C. E. & P. Railway Co.	Laundry supplies	6.79
	7479	C. E. & P. Railway Co.	Gymnasium supplies	10.00
	7480	C. E. & P. Railway Co.	Freight	10.81
	7481	Thomas Bowman, postmaster	Freight	22.62
	7482	Henry W. Rothert, superintendent	Postage and stationery	77.32
	7483	The Phoenix Electric Supply Co.	Miscellaneous accounts	111.14
	7484	C. M. & S. L. Railway Co.	Electric light supplies	5.00
	7485	J. Sietzinger	Freight	5.24
	7486	D. S. Pile	Bread	10.85
	7487	Stephen Bros.	Farm supplies	5.58
	7488	J. T. Findley	House supplies	1.00
	7489	Fleishmann & Co.	Oil	7.50
	7490	Fleishmann & Co.	Yeast	5.00

## STATEMENT—CONTINUED.

Date.	Warrant.	TO WHOM PAID.	ON WHAT ACCOUNT.	Amount.
1896				
Oct.	7492	D. E. Miller & Co.	Broom shop supplies.	\$ 13.11
	7493	Ed Brown.	Groceries.	17.42
	7494	Harle Haas & Co.	Drugs, etc.	13.32
	7495	Western Union Telegraph Co.	Telegrams.	4.01
	7496	W. A. Page Soap Co.	Son chips.	12.21
	7497	Empire Shugart Co.	Hardware.	1.60
	7498	P. O. DeVol.	Hardware.	39.57
	7499	George A. Hoagland.	Lumber.	2.11
	7500	Fowler, Dick & Walker.	Dry goods.	109.35
	7501	M. E. Weatherbee.	Stabling.	8.30
	7502	Boardman Bros. & Co.	Butter.	120.04
	7503	Council Bluffs Carpet Co.	House supplies.	220.65
	7504	Standard Oil Co.	Oils.	16.41
	7505	D. W. Bushnell.	Stationery.	226.13
	7506	Groeneweg & Schoeneger.	Groceries.	12.61
	7507	Western Electrical Supply Co.	Electric light supplies.	1.56
	7508	J. H. Pace.	Meat.	949.24
	7509	Congregational Sunday school and publishing society.	Subscription.	18.00
	7510	India Aikant works.	Savonae.	31.43
	7511	G. Brandenburg & Co.	Shoe shop supplies.	108.82
	7512	Crane company.	Pipe and fitting.	132.14
	7513	Clark & Wetzel.	Dry goods.	8.47
	7514	Council Bluffs Coal and Ice Co.	Coal.	59.21
	7515	S. T. McAtee.	Groceries.	6.30
	7516	Hauge & Olson.	House supplies.	13.06
	7517	Sarah R. B. Kohrer.	Rent of pasture.	136.00
	7518	Peter Henderson & Co.	Seeds.	8.31
	7519	Bell & Kent.	Architect's service.	37.10
	7520	P. H. Wind.	Labor and material.	420.88
	7521	Day & Hess.	Insurance.	45.00
	7522	Day & Hess.	Rent of pasture.	16.00
	7523	Meizer & Bandlett.	Produce.	35.16
	7524	Dennison Bros. Manufacturing Co.	Office supplies.	37.61
	7525	Henry W. Rothen, superintendent.	Pay roll, teachers.	1,763.23
	7526	Henry W. Rothen, superintendent.	Pay roll, officers and employees.	1,464.23
	7527	Treasurer of state.	Bal. in new roof on school house fund refunded.	306.20
	7528	Western Electrical Supply Co.	Electric light supplies.	53.32
	7529	Henry W. Rothen, superintendent.	Pay roll, teachers.	1,179.94
	7530	Henry W. Rothen, superintendent.	Pay roll, officers and emp's.	1,474.94
	7531	Globe Furniture Co.	Desks.	26.28
	7532	Council Bluffs Paint, Oil & Glass Co.	Paint supplies.	5.00
	7533	Ed Brown.	Groceries.	116.69
	7534	Stephen Bros.	House supplies.	1.30
	7535	Empire Shugart Co.	Hardware.	31.30
	7536	Council Bluffs Carpet Co.	House supplies.	2.10
	7537	Camp Bros.	Hospital supplies.	1.20
	7538	John Beno & Co.	Dry goods and clothing.	121.16
	7539	Yogter & Son.	Farm supplies.	15.10
	7540	W. W. Chapman.	Rest & outside connections.	4.00
	7541	Nebraska Telephone Co.	Rent & outside connections.	12.28
	7542	Harle Haas & Co.	Hospital supplies.	22.65
	7543	Ira Hanchitt & Smith.	Attendance.	20.75
	7544	Boardman Bros. & Co.	Butter.	224.79
	7545	Dr. John West.	Veterinary service.	4.00
	7546	American Type Foundry Co.	Printing office supply.	14.7
	7547	Standard Oil Co.	Oil.	43.61
	7548	Fowler, Dick & Walker.	Dry goods and clothing.	72.11
	7549	Carpenter Paper Co.	Printing office supplies.	1.47
	7550	M. E. Weatherbee.	Stabling.	7.50
	7551	Crane Company.	Pipe and fitting.	150.56
	7552	D. W. Bushnell.	Stationery.	124.75
	7553	Pfeilschmann & Co.	Yeast.	9.00
	7554	W. A. Goehring.	Horsehoeing.	2.25
	7555	Charles E. Lee.	Stationery.	2.40
	7556	J. H. Pace.	Meat.	470.65
	7557	Clint E. Byers.	Shoes.	31.00
	7558	W. A. Maurer.	House room supplies.	12.61
	7559	Henry W. Rothen, superintendent.	Miscellaneous accounts.	58.28
	7560	The New Nonpareil.	Subscription.	7.20

## STATEMENT—CONTINUED.

Date.	Warrant.	TO WHOM PAID.	ON WHAT ACCOUNT.	Amount.
1896				
Dec.	7561	J. B. Atkins.	General supplies.	\$ 31.26
	7562	Council Bluffs Coal and Ice Co.	Coal.	481.24
	7563	Groeneweg & Schoeneger.	Groceries.	238.30
	7564	The Singer Manufacturing Co.	Sewing room supplies.	8.53
	7565	American Biscuit and Mfg. Co.	Cans.	1.00
	7566	H. Kohndorff & Co.	Laundry supplies.	1.00
	7567	Caroline Yare.	Charts.	8.00
	7568	Quailus Manufacturing Co.	Quailus.	1.00
	7569	The John Van Bange Co.	Flour.	1.00
	7570	J. C. Hoffmayer.	Flour.	55.10
	7571	O. & N. W. Railway Co.	Freight.	7.78
	7572	O. & N. W. Railway Co.	Freight.	5.19
	7573	O. & N. W. Railway Co.	Freight.	3.31
	7574	O. & N. W. Railway Co.	Freight.	10.40
	7575	W. A. Page Soap Co.	Groceries.	1.00
	7576	Western Union Telegraph Co.	Laundry supplies.	35.24
	7577	Thomas B. B. postmaster.	Telegrams.	2.20
	7578	H. C. Raymond.	Postage.	10.00
	7579	George A. Hoagland.	Supplies.	11.20
	7580	Henry W. Rothen, superintendent.	Lumber.	20.45
	7581	P. O. DeVol.	Miscellaneous accounts.	120.90
	7582	Crystal Mill and Grain company.	Hardware.	23.30
	7583	Carter Hardware company.	Flour and feed.	56.10
	7584	Herrick Refrigerator and Cold Storage Co.	Hardware.	1.25
	7585	P. H. Wind.	Payment on contract.	449.88
	7586	P. H. Wind.	Payment on contract.	520.75
	7587	P. H. Wind.	Payment on contract.	569.90
	7588	P. H. Wind.	Payment on contract.	118.00
	7589	Harle Haas & Co.	Drugs, etc.	8.95
	7590	Pfeilschmann & Co.	Yeast.	362.85
	7591	J. H. Pace.	Meat.	107.25
	7592	Metcalfe Bros.	Clothing.	107.25
	7593	W. A. Goehring.	Horsehoeing.	2.25
	7594	Western Union Telegraph Co.	Telegrams.	3.50
	7595	Empire Shugart company.	Hardware.	38.54
	7596	Clint E. Byers.	Shoes.	11.00
	7597	D. W. Bushnell.	Stationery.	31.15
	7598	I. J. Palmer.	Fruits.	2.80
	7599	Dry goods Co.	Butter.	324.00
	7600	Boardman Bros. & Co.	Butter.	232.00
	7601	Ira Hanchitt & Smith.	Medical attendance.	54.80
	7602	P. Winers.	Flowers.	12.50
	7603	J. B. Atkins.	General supplies.	30.77
	7604	A. J. Cox.	Coal.	91.14
	7605	Brooklyn.	Groceries.	27.00
	7606	Groeneweg & Schoeneger.	Groceries.	178.89
	7607	S. T. McAtee.	Groceries.	20.30
	7608	Hayden Bros.	Groceries & kitchen supplies.	1.51
	7609	Chicago & North-Western Ry. Co.	Freight.	1.53
	7610	Charles Schoeneger & Co.	House supplies.	1.90
	7611	American Express company.	Salmon.	18.00
	7612	Trustees L. township.	Road grading, etc.	50.00
	7613	Adams Express company.	Goods, n. o. d.	20.65
	7614	Henry W. Rothen, superintendent.	Postmaster.	12.00
	7615	Thomas Bowman, postmaster.	Postage.	35.90
	7616	S. S. Keller.	Furniture.	134.95
	7617	Fowler, Dick & Walker.	Attendance.	1.51
	7618	Chapman & Smith company.	Bakery supplies.	3.19
	7619	J. C. Hoffmayer.	Flour.	74.10
	7620	Crystal Mill and Grain company.	Flour and feed.	132.50
	7621	David Bradley & Co.	Pipes, etc.	14.13
	7622	Sanborn Incandescent Lamp Co.	Lamps.	40.63
	7623	American Express company.	Salmon.	2.00
	7624	Stephen Bros.	House supplies.	3.05
	7625	Clark & Wilson.	Dry goods.	7.77
	7626	John O. Woodward & Co.	Paper sackward.	1.00
	7627	Nebraska Telephone company.	Rent and outside connections.	11.53
	7628	Western Electrical Supply Co.	Electric light supplies.	2.05
	7629	M. E. Weatherbee.	Stabling.	7.50
	7630	W. A. Maurer.	Dining room supplies.	104.51
	7631	P. O. DeVol.	Hardware.	25.25
	7632	Carpenter paper company.	Printing office supplies.	126.23
	7633	George A. Hoagland.	Lumber.	126.23



## STATEMENT—CONTINUED.

Date.	Warrant.	TO WHOM PAID.	ON WHAT ACCOUNT.	Amount.
1896. Dec.	7622	Richmond Safety Gate Co.	Repairs.....	4.00
	7623	C. B. Coal and Ice Co.	Coal.....	467.87
	7624	G. Brandenburg & Co.	Shoe shop supplies.....	178.71
	7625	Henry W. Rothert, superintendent	Miscellaneous accounts.....	37.75
	7626	Troy Laundry Machinery Co.	Yeast.....	.75
	7627	C. B. Paint, Oil and Glass Co.	Mecca compound.....	5.00
	7628	C. W. Chapman	House supplies.....	2.50
	7629	Milton Rogers & Son	Gas pipes.....	2.50
	7630	H. Gifford, M. D.	Eye glasses.....	2.50
1896 Jan.	7631	Henry W. Rothert, superintendent	Pay roll, teachers.....	1,799.94
	7632	Henry W. Rothert, superintendent	Pay roll, officers & emp's.....	2,501.29
	7633	Carpenter Paper Co.	Printing office supplies.....	68.99
	7634	Fischmann & Co.	Yeast.....	5.00
	7635	American Express Co.	Salmon.....	12.50
	7636	J. C. Blaby	Fire clay.....	1.75
	7637	The Alice & Fenfold Co.	Hospital supplies.....	9.00
	7638	Nebraska Telephone Co.	Rent and outside connections.....	11.93
	7639	Stephen Bros.	Engineer's supplies.....	21.55
	7640	Boardman Bros. & Co.	Butter.....	251.58
	7641	The John Van Range Co.	Brackets.....	.20
	7642	American School for the Deaf.	Books.....	.25
	7643	Council Bluffs Carpet Co.	House supplies.....	15.63
	7644	Kennard Glass and Paint Co.	Paint supplies.....	10.70
	7645	C. & N. W. Ry. Co.	Freight.....	16.18
	7646	Chicago Clump Co.	Plaster.....	11.40
	7647	Peter Henderson & Co.	Engineer's supplies.....	1.28
	7648	N. O. Nelson Mfg. company.	Farm supplies.....	2.55
	7649	D. S. Pitt	Produce.....	18.29
	7650	J. B. Snyder	Lumber.....	1.18
	7651	George A. Hoagland	Dent of piano.....	24.00
	7652	Muelier and Organ company	Crackers.....	56.94
	7653	American Biscuit Mfg. company.	Shoe shop supplies.....	8.40
	7654	G. Brandenburg & Co.	Hour and feed.....	82.49
	7655	Crystal Mill and Grain company.	Entertainment supplies.....	19.28
	7656	John G. Woodward & Co.	Hardware.....	24.50
	7657	P. C. De Vol	Lumber.....	5.08
	7658	Charles E. Hines	Stationery.....	7.75
	7659	D. W. Bushnell	Flour.....	7.00
	7660	J. C. Hoffmeyer	Dry goods & Walker.....	145.49
	7661	Fowler, Dick & Walker	Shoes.....	34.35
	7662	Clint S. Byers	Postage.....	20.10
	7663	Thomas Bowman, postmaster	Meats.....	511.48
	7664	J. H. Pace	Groceries.....	167.93
	7665	Ell Brown	House supplies.....	175.43
	7666	Stewart Bros.	House supplies.....	2.15
	7667	Council Bluffs Paint, Oil & Glass Co.	Laundry supplies.....	25.47
	7668	W. A. Page Soap Co.	Stabling.....	6.75
	7669	M. E. Weatherbee	Mining room supplies.....	34.44
	7670	W. A. Maurer	Telegrams.....	2.37
	7671	Western Union Telegraph company	Printing office supplies.....	1.50
	7672	Pryor Bros.	Coarse shoeing.....	4.09
	7673	W. A. Goehring	Savogran.....	82.69
	7674	India Alkali works.	Shoes.....	23.10
	7675	R. M. Sargent	House supplies.....	545.56
	7676	Council Bluffs Coal and Ice Co.	Entertainment supplies.....	14.17
	7677	Duquette & Co.	Clothing.....	55.20
	7678	Metcalf Bros.	Groceries.....	317.14
	7679	Gronoweg & Schoentgen.	Evergreens.....	16.00
	7680	Curlie Bros.	Dry goods and clothing.....	135.50
	7681	John Beno & Co.	House supplies.....	27.35
	7682	J. B. Atkins	Medical attendance.....	78.00
	7683	Dr. Henschitt & Smith	Light company.....	
	7684	Council Bluffs Gas and Electric	House supplies.....	3.13
	7685	Company	Drayage.....	25.50
	7686	Council Bluffs & Omaha Transfer Co.	Groceries.....	13.28
	7687	W. T. McAtee	Electric light supplies.....	1.00
	7688	Western Electrical Supply Co.	Miscellaneous accounts.....	71.23
	7689	Henry W. Rothert, superintendent	House supplies.....	2.50
	7690	Harlie, Hass & Co.	Repairs.....	30.40
	7691	John P. Weaver	Pipe and fittings.....	90.37
	7692	Crane company	Repairs.....	7.90
	7693	Schultz & Hill.		

## STATEMENT—CONTINUED.

Date.	Warrant.	TO WHOM PAID.	ON WHAT ACCOUNT.	Amount.
1896. Jan.	7700	American Type Foundry company.	Printing office supplies.....	4.38
	7701	Charles Lammert.	Funeral expense.....	25.00
	7702	Henry W. Rothert, superintendent	Miscellaneous accounts.....	25.28
	7703	Larkin Soap Mfg. company.....	Soaps.....	10.00
	7704	Cole & Lick	Cooking school supplies.....	10.00
	7705	Standard Oil company.....	Oils.....	53.25
	7706	A. J. Fuller & Co.	Polish.....	2.16
	7707	C. S. Kinsler	Table ware.....	20.10
	7708	Henry W. Rothert, superintendent	Pay roll, teachers.....	1,799.94
	7709	Henry W. Rothert, superintendent	Pay roll, officers & emp's.....	1,451.17
	7710	Larkin Soap Manufacturing Co.	Soaps.....	12.00
	7711	Gregory Talc Black & Gray Co.	Blackboard.....	3.30
	7712	John West.....	Veterinary service.....	11.00
	7713	Trinity Bros.	Mince meat.....	17.90
	7714	John Seaman.....	Horses.....	50.00
	7715	L. A. King	Labor.....	35.00
	7716	Omaha & St. Louis Ry. company.	Freight.....	6.75
	7717	Sprague Iron Works Co.	Repairs on elevator.....	19.55
	7718	Thomas Bowman, postmaster	Postage.....	25.50
	7719	Henry W. Rothert, superintendent	Miscellaneous accounts.....	67.28
	7720	J. F. Wilcox	Produce.....	4.70
	7721	John Beno & Co.	Dry goods and clothing.....	92.83
	7722	C. B. Randlett	Produce.....	14.47
	7723	W. A. Maurer.....	Dining-room supplies.....	14.30
	7724	Ell Brown.....	Groceries.....	123.65
	7725	J. H. Pace	Meats.....	485.50
	7726	Council Bluffs Coal and Ice Co.	Coal.....	699.33
	7727	G. Brandenburg & Co.	Shoe-shop supplies.....	145.25
	7728	American Type Foundry Co.	Printing office supplies.....	27
	7729	The Singer Manufacturing Co.	Sewing-room supplies.....	5.43
	7730	Harlie, Hass & Co.	Drugs, etc.....	18.84
	7731	P. C. De Vol	Hardware.....	1.40
	7732	H. Kohlenstamm & Co.	Laundry supplies.....	6.33
	7733	A. J. Bozart	Dynamo lighter.....	5.50
	7734	B. Atkins	Stationery.....	10.40
	7735	D. W. Bushnell	Stationery.....	21.85
	7736	Gronoweg & Schoentgen.	Groceries.....	519.25
	7737	American Biscuit Mfg. Co.	Shoe-shop supplies.....	8.40
	7738	Metcalf Bros.	Clothing.....	12.30
	7739	Crystal Mill & Grain Co.	Flour and feed.....	95.30
	7740	J. C. Hoffmeyer	Flour.....	66.65
	7741	Fowler, Dick & Walker	Dry goods.....	56.73
	7742	Fischmann & Co.	Yeast.....	5.13
	7743	George A. Hoagland	Lumber.....	85.71
	7744	W. A. Goehring	Horseshoeing.....	11.00
	7745	Dr. Henschitt & Smith	Medical attendance.....	41.00
	7746	D. S. Pitt	Farm supplies.....	1.40
	7747	M. E. Weatherbee	Stabling.....	7.00
	7748	Empley-Shugart Co.	Hardware.....	22.81
	7749	Western Union Telegraph Co.	Telegrams.....	2.39
	7750	Council Bluffs Paint, Oil and Glass Co.	House supplies.....	3.75
	7751	The John Van Range Co.	Lining range.....	11.70
	7752	A. J. Fish	Grain.....	1.90
	7753	Carpenter & Paper Co.	Stationery.....	10.00
	7754	Mrs. M. Pfeiffer	Hats.....	6.90
	7755	Mrs. M. Pfeiffer	Hats.....	5.00
	7756	India Alkali works	Savogran.....	33.18
	7757	Armour & Co.	Meats.....	21.01
	7758	Bardine Bros. & Oregon	Butter.....	231.50
	7759	W. A. Page Soap company.	Laundry supplies.....	39.44
	7760	Schultz & Hill	Repairs.....	3.05
	7761	Nebraska Telephone company	Rent and outside connections.....	12.10
	7762	W. W. Chapman	House supplies.....	1.35
	7763	Union Wire Mattress company.....	Castors.....	18.55
	7764	Standard Oil company	Oil.....	28.59
	7765	Crane-Churchill company	Eng. nec's supplies.....	34.77
	7766	Moreshead & Co.	Binding books.....	8.25
	7767	Pay roll, teachers.....	Pay roll, teachers.....	692.53
	7768	Henry W. Rothert, superintendent	Pay roll, officers & employees.....	808.58
	7769	Henry W. Rothert, superintendent	Pay roll, officers & employees.....	678.73
	7770	Henry W. Rothert, superintendent	Pay roll, teachers.....	1,540.03
	7771	Locke	Locks.....	1.00
	7772	S. O. Bryant & Co.	Dry goods and clothing.....	94.12
	7773	John Beno & Co.		

March.



## STATEMENT—CONTINUED.

Date.	Warrant.	TO WHOM PAID.	ON WHAT ACCOUNT.	Amount.
1896.				
March.	7773	American Type Foundry company.	Printing office supplies.....	1.88
	7774	J. H. Pace	Meats.....	37.96
	7775	Metcalf Bros.	Medical attendance.....	58.75
	7776	J. C. Hoffmeyer	Clothing.....	.30
	7777	Crystal Mill and Grain company.	Flour.....	53.61
	7778	W. A. Maurer	Flour and feed.....	25.45
	7780	B. M. Sargent.	Dining room supplies.....	34.27
	7781	Duquette & Co.	Shoes.....	9.65
	7782	Gronow & Schwenke.	Produce.....	65.15
	7783	Clint S. Byers.	Groceries.....	261.66
	7784	Ell Brown.	Shoes.....	36.50
	7785	Western Union Telegraph Co.	Groceries.....	90.71
	7786	Council Bluffs Coal and Ice Co.	Telegrams.....	2.78
	7787	Fowler, Dick & Walker.	Oat.....	455.73
	7788	M. E. Weatherber.	Dry goods.....	43.86
	7789	George A. Hoadland.	Lumber.....	48.43
	7790	A. H. Abbott & Co.	Stabling.....	3.75
	7791	Boardman Bros. & Co.	Art room supplies.....	102.18
	7792	Arcade Manufacturing company.	Mop sticks.....	1.50
	7793	Clark & Wetzel.	Sewing room supplies.....	3.10
	7794	Paul G. Seyler.	Thermometer.....	10.19
	7795	Council Bluffs Carpet company.	House supplies.....	15.92
	7796	C. S. Raymond.	Table ware.....	21.56
	7797	Hoke Engraving Plate company.	Engraving plates.....	17.40
	7798	Harie, Bass & Co.	Drugs, etc.....	7.43
	7799	D. W. Hushnell.	Stationery.....	37.42
	7800	P. C. DeVol.	Hardware.....	24.25
	7801	Fleischmann & Co.	Yeast.....	4.50
	7802	Trayer & Chandler.	Art room supplies.....	21.10
	7803	Crane-Churchill company.	Engineer's supplies.....	19.95
	7804	Standard Oil company.	Oil.....	12.95
	7805	W. W. Chapman.	House supplies.....	10.19
	7806	John Lewis Childs.	Engineer's supplies.....	4.50
	7807	David Bradley & Co.	Hospital supplies.....	4.26
	7808	J. F. Wilcox.	Flowers and house supplies.....	4.70
	7809	Morsehouse & Co.	Journal for treasurer.....	7.00
	7810	Clint S. Byers.	Shoes.....	16.50
	7811	J. B. Atteral.	Shoes.....	22.81
	7812	Carpenier Paper Co.	Printing office supplies.....	43.80
	7813	Shugart & Oursan.	Seeds.....	7.67
	7814	A. N. Chubbuck & Co.	Engineer's supplies.....	4.43
	7815	S. T. McAtee.	Groceries.....	11.20
	7816	H. L. Smith & Co.	Art room supplies.....	38.75
	7817	Omaha Drug & Chemical Co.	Engineer's supplies.....	35.75
	7818	National Specialty Mfg. Co.	Barrel drainer.....	1.75
	7819	Emple Shugart Co.	Hardware.....	1.75
	7820	J. G. Ritter.	Fire clay.....	2.32
	7821	L. C. Brackett.	Office supplies.....	8.85
	7822	Stephen Bros.	Engineer's supplies.....	11.50
	7823	H. Kohstamm & Co.	Laundry supplies.....	15.80
	7824	Kennard Glass and Paint Co.	Paints.....	5.30
	7825	Thomas Bowman, postmaster.	Postage and stationery.....	54.22
	7826	Henry W. Rother, superintendent.	Miscellaneous accounts.....	153.43
	7827	C. N. W. Railway Co.	Freight.....	2.61
	7828	Henry Cole.	Entertainment supplies.....	10.10
	7829	D. E. Yale.	Hatchet ball.....	43.00
	7830	American Annals for the Deaf.	Magazines.....	36.00
	7831	Henry W. Rother, superintendent.	Pay roll, officers and emp's.....	1,411.00
	7832	Henry W. Rother, superintendent.	Pay roll, teachers.....	1,114.24
	7833	Nebraska Telephone Co.	Rent & outside connections.....	12.43
	7834	J. F. Wilcox.	General supplies.....	23.45
	7835	J. B. Atteral.	General supplies.....	27.00
	7836	Standard Oil Co.	Oil.....	42.00
	7837	Duquette & Co.	Kitchen supplies.....	51.95
	7838	L. F. Judson.	Farm supplies.....	30.00
	7839	Drs. Hanchitt & Smith.	Medical attendance.....	32.50
	7840	D. W. Hushnell.	School supplies.....	20.10
	7841	C. Hoffmeyer.	School supplies.....	54.45
	7842	W. O. Goehring.	Horse shoeing.....	1.75
	7843	Carter Hardware Co.	Lamps.....	4.15
	7844	Stephen Bros.	Lamps.....	1.30

## STATEMENT—CONTINUED.

Date.	Warrant.	TO WHOM PAID.	ON WHAT ACCOUNT.	Amount.
1896.				
April.	7846	Boardman Bros. & Co.	Batter.....	240.00
	7847	S. T. McAtee.	Groceries.....	2.15
	7848	Crane-Churchill Co.	Pipe and fitting.....	1.15
	7849	George A. Hoadland.	Lumber.....	42.08
	7850	Harie, Bass & Co.	Drugs, etc.....	4.70
	7851	C. R. Jepsen & Co.	Repairs and house supplies.....	9.00
	7852	S. S. Keller.	Furniture.....	18.30
	7853	B. M. Sargent.	Shoes.....	7.65
	7854	D. E. Yale.	Harness.....	2.00
	7855	Western Union Telegraph Co.	Telegrams.....	5.94
	7856	P. C. DeVol.	Hardware.....	11.00
	7857	Council Bluffs Coal and Ice Co.	Coal.....	268.38
	7858	Coaline Manufacturing Co.	Cement.....	.30
	7859	Council Bluffs Omaha Transfer Co.	Drayage.....	2.00
	7860	Thomas Charles & Co.	Art room supplies.....	1.35
	7861	Fowler, Dick & Walker.	Dry goods.....	88.36
	7862	A. G. Spalding & Bros.	Gymnasium supplies.....	6.55
	7863	Morsehouse & Co.	Riding boots.....	8.75
	7864	The John Van Hange company.	Kitchen supplies.....	21.00
	7865	Schultz & Hill.	Blacksmithing.....	5.15
	7866	Carpenier Paper company.	Office supplies.....	2.64
	7867	Fleischmann & Co.	Yeast.....	5.00
	7868	M. E. Weatherber.	Stabling.....	7.25
	7869	G. Hoadland & Co.	Shoe shop supplies.....	10.02
	7870	W. A. Maurer.	Dining room supplies.....	4.20
	7871	J. H. Pace.	Meats.....	356.72
	7872	American Type Foundry company.	Printing office supplies.....	3.52
	7873	Armour & Co.	Meats.....	32.27
	7874	Emple Shugart company.	Hardware.....	47.07
	7875	W. W. Chapman.	Art room supplies.....	1.35
	7876	Gronow & Schwenke.	Groceries.....	312.63
	7877	Council Bluffs Paint, Oil & Glass Co.	Paints.....	5.07
	7878	Crystal Mill and Grain company.	Flour.....	2.90
	7879	Ell Brown.	Groceries.....	6.96
	7880	John Hess & Co.	Dry goods and clothing.....	128.65
	7881	C. R. Jepsen.	Provisions.....	19.44
	7882	H. L. Smith & Co.	Art room supplies.....	1.70
	7883	The Western Soap company.	Soaps.....	21.10
	7884	Clint S. Byers.	Shoes.....	15.75
	7885	Stewart Bros.	Groceries.....	130.15
	7886	Leaking Wheelbarrow company.	Trucks, etc.....	12.80
	7887	E. R. Schick.	Art room supplies.....	16.70
	7888	E. N. Lyons.	Ice.....	159.10
	7889	Chicago, Rock Island & P. Ry. Co.	Freight on ice.....	74.45
	7890	Henry W. Rother, superintendent.	Pay roll, teachers.....	1,726.36
	7891	Henry W. Rother, superintendent.	Pay roll, officers & emp's.....	1,330.87
	7892	Henry W. Rother, superintendent.	Miscellaneous accounts.....	61.05
	7893	A. T. Flickinger.	School for treasurer.....	106.00
	7894	Jonkins Bros.	Engineer's supplies.....	1.00
	7895	Fleischmann & Co.	Yeast.....	4.00
	7896	H. Hardy & Co.	School supplies.....	15.31
	7897	Swass & Howard.	Fire brick.....	15.00
	7898	J. S. Baughman.	Sewing room supplies.....	12.50
	7899	The Bicycle Shop, Lander company.	House supplies.....	21.40
	7900	A. McClure & Co.	Library supplies.....	3.50
	7901	United States supply company.....	Engineer's supplies.....	1.00
	7902	H. Kohstamm & Co.	Laundry supplies.....	6.05
	7903	Ree Printing company.	School supplies.....	1.00
	7904	L. W. Williams.	Garden supplies.....	1.30
	7905	Henry W. Rother, superintendent.	Pay roll, officers & emp's.....	1,443.37
	7906	Henry W. Rother, superintendent.	Pay roll, teachers.....	1,726.36
	7907	Henry W. Rother, superintendent.	Petty cash advanced.....	481.07
	7908	Chicago, Rock Island & P. Ry. Co.	Freight on lumber.....	19.10
	7909	Archibald & Howard Yellow Pine Co.	Shoes.....	119.47
	7910	Clint S. Byers.	Shoes.....	49.65
	7911	Mrs. Theo. Bray.	Sewing room supplies.....	4.51
	7912	H. W. Johns Mfg. company.	Office supplies.....	11.52
	7913	Carpenier Paper company.	Printing office supplies.....	3.58
	7914	Carpenier Paper Co.	Printing office supplies.....	11.52
	7915	Carpenier Paper Co.	Printing office supplies.....	62.39
	7916	H. Kohstamm & Co.	Laundry supplies.....	11.05
	7917	Federal Manufacturing Co.	Petebold washers.....	5.10
	7918	Hoke Engraving Plate Co.	Printing office supplies.....	5.27

## STATEMENT—CONTINUED.

Date.	Warrant.	TO WHOM PAID.	ON WHAT ACCOUNT.	Amount.
1906 July..	1919	Paul C. Aylsworth.	Farm supplies.	5.00
	1920	Troy Laundry Machinery Co.	Laundry supplies.	3.00
	1921	Katz Engraving Co.	Entertainment supplies.	10.00
	1922	Armour & Co.	Meats.	35.23
	1923	Machinists' supply Co.	Boiler house and engineer's supplies.	74.20
	1924	India Alkali works.	Savoyan.	31.25
	1925	General Incandescent Arc Light Co.	Electric light supplies.	7.00
	1926	Goodyear Rubber Co.	Door springs.	1.75
	1927	Boardman Bros. & Co.	Batter.	100.00
	1928	The Western Soap Co.	Better.	125.80
	1929	Industrial Home for the Blind.	Brooms.	7.88
	1930	The Western Soap Co.	Soap chips.	31.55
	1931	The Western Soap Co.	Soap chips.	10.00
	1932	American Type Foundry Co.	Printing office supplies.	.57
	1933	Champion Iron and Wire works.	Wire fence guards.	.75
	1934	J. L. Brantley & Son.	Carpets and matting.	42.25
	1935	Des Moines Daily Leader.	Subscription.	5.00
	1936	G. Brandenberg & Co.	Shoe shop supplies.	87.65
	1937	G. Brandenberg & Co.	Shoe shop supplies.	24.15
	1938	Standard Oil Co.	Oil.	31.05
	1939	Standard Oil Co.	Oil.	16.00
	1940	Crane-Churchill Co.	Engineer's supplies.	20.81
	1941	Crane-Churchill Co.	Engineer's supplies.	12.38
	1942	Chapman & Smith Co.	Bakery supplies.	1.15
	1943	Henry W. Rotherbert, superintendent.	Pay roll, officers and employees.	1,120.00
	1944	Henry W. Rotherbert, superintendent.	Pay roll, officers and employees.	231.50
	1945	Hell & Kent.	Service as architects.	104.75
	1946	Groneweg & Schoentgen.	Groceries.	28.13
	1947	Emphie Shugart Co.	Hardware.	27.00
	1948	Crystal Mill and Grain Co.	Floor and feed.	75.00
	1949	West-ern Union Telegraph Co.	Telegram.	4.78
	1950	Nebraska Telephone Co.	Telephone rent and outside connection.	12.33
	1951	M. F. Weatherbee.	Stabling.	16.50
	1952	D. S. Fife.	Farm supplies.	28.15
	1953	George A. Hoagland.	Lumber.	36.97
	1954	W. A. Maurer.	Dining room supplies.	29.73
	1955	Ell Brown.	Groceries.	44.27
	1956	J. H. Pace.	Meats.	496.51
	1957	John Beno & Co.	Dry goods and clothing.	114.75
	1958	D. W. Bushnell.	Schist supplies.	25.40
	1959	S. T. McAtee.	Groceries.	25.00
	1960	J. C. Hoffmeyer.	Flour.	109.69
	1961	Shugart & Duran.	Seeds.	51.75
	1962	Council Bluffs Coal and Ice Co.	Coal.	194.63
	1963	J. B. Atkins.	Drugs, etc.	19.60
	1964	Forcier, Dick & Walker.	Dry goods.	80.40
	1965	J. F. Wilcox.	Flowers.	4.25
	1966	W. A. Goshring.	Horse-shoeing.	6.70
	1967	Stephan Bros.	Gas fixtures.	2.00
	1968	O. Younkerman & Co.	Potatoes.	8.70
	1969	Dr. John West.	Veterinary service.	15.00
	1970	Camp Bros.	Hospital supplies.	2.50
	1971	Council Bluffs Gas & Electric L't Co.	Rubber tubing.	.85
	1972	E. O. Brown.	House supplies.	1.50
	1973	J. B. Atkins.	Trunks.	27.15
	1974	Cole & Cole.	Kitchen supplies.	12.87
	1975	Dr. H. S. West.	Medical attendance.	5.00
	1976	A. C. Bell.	Ice supplies.	1.00
	1977	Western Union Telegraph Co.	Telegrams.	.30
	1978	Kennard Glass Co.	Paints.	14.10
	1979	Shugart & Duran.	Potatoes.	20.45
	1980	Metzger Bros.	Clothing.	92.75
	1981	Brown & Wessner.	Farm supplies.	4.50
	1982	Crystal Mill and Grain Co.	Floor and feed.	86.27
	1983	Schultz & Hill.	Blacksmithing.	3.35
	1984	Nebraska Telephone Co.	Rent & outside connections.	11.00
	1985	John West.	Medicine for horse.	4.40
	1986	H. C. Raymond.	House supplies.	3.75
	1987	Charles Swaine.	Hardware.	26.81

## STATEMENT—CONTINUED.

Date.	Warrant.	TO WHOM PAID.	ON WHAT ACCOUNT.	Amount.
1906 July..	1991	W. A. Goshring.	Horse-shoeing.	6.00
	1992	L. C. Bracker.	Office supplies.	2.05
	1993	Martin Hughes & Son.	Sand.	8.05
	1994	D. W. Bushnell.	Stationery.	12.35
	1995	C. B. Jaccoulin & Co.	Glass.	2.25
	1996	Harle, Haas & Co.	Drugs, etc.	24.57
	1997	J. Hoffmeyer & Smith.	Medical attendance.	35.00
	1998	J. H. Pace.	Flour.	65.40
	1999	John Beno & Co.	Meats.	241.89
	2000	Forcier, Dick & Walker.	Dry goods and clothing.	211.65
	2001	J. B. Atkins.	Dry goods.	105.84
	2002	Duggett & Co.	General supplies.	25.42
	2003	Groneweg & Schoentgen.	Groceries and provisions.	105.25
	2004	J. F. Wilcox.	Flowers and produce.	693.72
	2005	R. M. Sargent.	Shoes.	11.61
	2006	George A. Hoagland.	Shoes.	27.40
	2007	Ell Brown.	Groceries.	1.71
	2008	Fleischmann & Co.	Groceries.	111.55
	2009	W. A. Maurer.	Meat.	5.15
	2010	M. F. Weatherbee.	Dining room supplies.	5.28
	2011	J. C. Blaby.	Stabling.	14.75
	2012	S. T. McAtee.	Radiator brushes.	2.00
	2013	Council Bluffs Coal and Ice Co.	Groceries.	13.90
	2014	The Stinger Manufacturing Co.	Coal.	205.02
	2015	Council Bluffs Paint, Oil & Glass Co.	Needles.	15.10
	2016	Stephan Bros.	General supplies.	2.25
	2017	Emphie Shugart Co.	House supplies.	2.25
	2018	Charles Swaine.	Carpenter shop supplies.	301.85
	2019	Berger Bros.	Tin roof on house.	1.50
	2020	Joseph Dasthorf.	Printing office supplies.	1.50
	2021	Omaha Bridge and Terminal Co.	Fountains.	42.50
	2022	George B. Maggeni.	French on porch.	75.00
	2023	Fleischmann & Co.	Sawing room supplies.	4.17
	2024	D. W. Bushnell.	Yeast.	1.60
	2025	M. F. Weatherbee.	Flour.	13.75
	2026	Mrs. M. Pfeiffer.	Hats.	102.75
	2027	Shugart & Duran.	Hats.	2.00
	2028	Crystal Mill and Grain Co.	Rent and outside connections.	35.00
	2029	Crystal Mill and Grain Co.	Floor and feed.	29.05
	2030	W. A. Maurer.	Dining room supplies.	24.67
	2031	R. H. Kane.	Produce.	22.82
	2032	Harle, Haas & Co.	Drugs, etc.	5.69
	2033	P. C. De Vol.	Hardware.	54.24
	2034	A. Goshring.	Iron-shed.	7.75
	2035	Henry H. Van Brunt.	Farm supplies.	11.00
	2036	American Express Co.	Swing.	11.50
	2037	Groneweg & Schoentgen.	Groceries.	14.64
	2038	Dr. Hanchitt & Smith.	Groceries.	127.09
	2039	Council Bluffs Coal and Ice Co.	Medical attendance.	1.00
	2040	Council Bluffs Coal and Ice Co.	Carpenter shop supplies.	2.00
	2041	R. B. Coal and Ice Co.	Coal.	129.79
	2042	Nebraska Telephone Co.	Rent and outside connections.	11.65
	2043	John H. and Co.	Dry goods and clothing.	200.16
	2044	J. H. Pace.	Meats.	200.16
	2045	Ell Brown.	Groceries.	25.45
	2046	Forcier, Dick & Walker.	Dry goods.	25.40
	2047	M. F. Weatherbee.	Stabling.	3.75
	2048	S. T. McAtee.	Groceries.	21.90
	2049	Western Union Telegraph company.	Telegrams.	4.35
	2050	P. C. De Vol.	Tin roof on house.	114.48
	2051	Vogeler & Son.	Farm supplies.	15.00
	2052	Stephan Bros.	Batch room fixtures.	65.50
	2053	Duggett & Co.	Produce.	45.35
	2054	Council Bluffs Paint, Oil & Glass Co.	Paints and brushes.	23.70
	2055	P. C. De Vol.	Hardware.	15.15
	2056	Western Electrical Supply Co.	Electric light supplies.	74.07
	2057	George A. Hoagland.	Lumber.	45.90
	2058	Crane-Churchill company.	Ice saw sitting.	4.25
	2059	R. M. Sargent.	Shoes.	54.77
	2060	Henry W. Rotherbert, superintendent.	Miscellaneous accounts.	109.00
	2061	Henry W. Rotherbert, superintendent.	Pay roll, superintendent.	30.10
	2062	Henry W. Rotherbert, superintendent.	Pay roll, strengthen'g west or boys' wing.	125.00



## STATEMENT—CONTINUED.

Date.	Warrant.	TO WHOM PAID.	ON WHAT ACCOUNT.	Amount.
Aug.	8054	Henry W. Rother, superintendent	Pay roll, officers & employees	\$ 842.40
	8055	Henry W. Rother, superintendent	Miscellaneous accounts	302.25
	8056	A. Wallenberg	Setting boilers, payment on contract	100.00
	8057	Henry W. Rother, superintendent	Pay roll, boiler and engine house & additional boiler	140.00
	8058	N. W. Williams	Strengthening water boiler	157.35
	8059	John P. Weaver	Boiler & eng. house & addl. boiler, payment on cont.	1,000.00
	8070	John P. Weaver	Boiler & eng. house & addl. boiler, payment on cont.	500.00
	8071	P. H. Wind	Repair supplies	17.75
	8072	Henry W. Rother, superintendent	Pay roll, repair	84.00
	8073	Henry W. Rother, superintendent	Pay roll, repair to children's dining room	35.00
	8074	Henry W. Rother, superintendent	Pay roll, repairs	175.00
	8075	Henry W. Rother, superintendent	Pay roll, strengthening west or boys' wing	84.00
	8076	Henry W. Rother, superintendent	Pay roll, strengthening west or boys' wing	89.00
	8077	Henry W. Rother, superintendent	Pay roll, repairs to children's dining room	32.75
Sept.	8078	Henry W. Rother, superintendent	Pay roll, officers & employees	\$ 877.45
	8079	Henry W. Rother, superintendent	Pay roll, repairs	221.29
	8080	A. Wallenberg	Setting boilers, payment on contract	150.00
	8081	John P. Weaver	Boiler & eng. house & addl. boiler, payment on cont.	405.00
	8082	John P. Weaver	Boiler & eng. house & addl. boiler, payment on cont.	405.00
	8083	John P. Weaver	Boiler & eng. house & addl. boiler, payment on cont.	1,000.00
	8084	Western Electrical Supply Co.	Electric light supplies	8.43
	8085	Western Electrical Supply Co.	Electric light supplies	20.19
	8086	Western Electrical Supply Co.	Electric light supplies	74.21
	8087	Carpenter Paper company	Printing office supplies	5.64
	8088	H. W. Johns Mfg. company	Paints	41.60
	8089	The Van Anten Steam Specialty Co.	Engineer's supplies	14.92
	8090	P. M. Russell	Engineer's supplies	13.90
	8091	Armour & Co.	Hams	15.59
	8092	American Battery company	Electric light supplies	14.92
	8093	Ernst & Salmstein	Paints	62.50
	8094	Blanchard & Place	Engraving diplomas	3.80
	8095	P. M. Russell	Electric light supplies	2.63
	8096	Crescent Package Mfg. company	Dairy supplies	15.10
	8097	Carter Hardware company	Hardware	1.55
	8098	Clark & Wagon	Sewing room supplies	6.00
	8099	E. C. Newton	Cow tie chains	2.40
	8100	Idal Woodware Co.	Ladders	15.00
	8101	G. Brandenburg & Co.	Shoe shop supplies	11.94
	8102	Monash, Youker & Co.	Steam separator	45.00
	8103	Frank Mathiesen for Machinists Supply	Nippers	1.75
	8104	Frank Mathiesen for Machinists Supply Co.	Engineer's supplies	18.00
	8105	The John Van Range Co.	Repair coffee and tea urns and kitchen supplies	105.99
	8106	The Bridgeport Wood Finish'g Co.	Paints and brushes	14.00
	8107	The Bridgeport Wood Finish'g Co.	Paints	15.50
	8108	The Bridgeport Wood Finish'g Co.	Paints	20.00
Oct.	8109	Henry W. Rother, superintendent	Pay roll, officers & employees	\$ 1,823.03
	8110	Henry W. Rother, superintendent	Pay roll, teachers	1,634.21
	8111	A. Wallenberg	Setting boilers, payment on contract	750.00
	8112	A. Wallenberg	Setting boilers, payment on contract	750.00
	8113	Peter Fawcett	New boiler and fittings	688.27
	8114	Bell & Kent	Plans for annex to boiler house	10.00
	8115	Henry W. Rother, superintendent	Miscellaneous accounts	50.38
	8116	J. B. Atkins	Drugs, etc.	38.95
	8117	J. B. Atkins	Drugs, etc.	31.10

## STATEMENT—CONTINUED.

Date.	Warrant.	TO WHOM PAID.	ON WHAT ACCOUNT.	Amount.
1896.				
Oct.	8118	J. B. Atkins	Paints	\$ 143.70
	8119	J. B. Atkins	Paints and drugs	62.57
	8120	John F. Schultz	Plaster	2.50
Nov.	8121	M. E. Weatherbee	Stabling	4.00
	8122	New No. 1000	Subscription	1.50
	8123	D. S. Fildes	Farm supplies	1.50
	8124	Western Union Telegraph Co.	Telegrams	3.42
	8125	United States Supply Co.	Engineer's supplies	1.50
	8126	John Van Range Co.	Range repair	7.00
	8127	United Typewriter & Supply Co.	Repair typewriter	7.10
	8128	Darfee Furniture Co.	Mirrors	8.00
	8129	M. E. Weatherbee	Stabling	5.65
	8130	Vogler & Son	Bar supplies	5.50
	8131	M. Wallman	Clocks	12.70
	8132	Henry H. Van Brant	Mower section bolts	12.70
	8133	D. S. Fildes	Harness	1.25
	8134	O. Younkerman & Co.	Garden supplies	1.75
	8135	Conner B. Guss & Electric Light Co.	Rubber tubing	4.00
	8136	J. D. Lutzinger	Repair locks and keys	7.55
	8137	Richmond Safety Gate Co.	Track bar to elevator	3.50
	8138	P. M. Russell	Repairs	35
	8139	United Typewriter and Supply Co.	Repair typewriter	1.50
	8140	W. T. Ottum & Co.	Engineer's supplies	4.30
	8141	American Food Supply Co.	Printing office supplies	6.30
	8142	W. D. Allen & Co.	Engineer's supplies	1.13
	8143	Carter Hardware Co.	Door-latch and key	1.50
	8144	Conner B. Guss & Electric Light Co.	Rubber tubing	1.50
	8145	J. F. Fildes	Rubber machine oil	.75
	8146	Frank E. Fitts Mfg. & Supply Co.	Paints	4.50
	8147	R. Kohnstamm & Co.	Laundry supplies	8.75
	8148	J. Lutzinger	Bread	3.00
	8149	Pryor & Son	Printing ink	2.00
	8150	S. Pines	Hoses	2.00
	8151	Milton Rogers & Son	Sauce pans	2.75
	8152	Schultz & Hill	Blacksmithing	4.00
	8153	Thomas	School supplies	4.00
	8154	Western Union Telegraph Co.	Telegrams	4.56
	8155	J. M. Williams	Stabling	.80
	8156	The Mason Regulator Co.	Piston for valve	2.00
	8157	Boston Electric Co.	Electric light supplies	.85
	8158	Crane Elevator Co.	Cylinder packing	2.50
	8159	Kubonow & Schuchgen	Timber	5.00
	8160	N. O. Nelson Mfg. Co.	Wire broom	.85
	8161	George B. Chapman	Picture frames	1.00
	8162	Nebraska Telephone Co.	Rent & outside connections	14.75
	8163	Nebraska Telephone Co.	Rent & outside connections	11.53
	8164	Nebraska Telephone Co.	Rent & outside connections	14.75
	8165	Nebraska Telephone Co.	Rent & outside connections	14.75
	8166	Western Union Telegraph Co.	Telegrams	11.96
	8167	J. Lutzinger	Bread	6.25
	8168	Peter Hendon & Co.	Feeds	25.00
	8169	Henry W. Rother, superintendent	Pay roll, teachers	1,718.27
	8170	Henry W. Rother, superintendent	Pay roll, officers & employees	1,462.83
	8171	Stephen Best	Supplies	1.50
	8172	Council Bluffs Omaha Transfer Co.	Drayage	10.00
	8173	Ell Brown	Groceries	10.91
	8174	J. H. Pace	Meats	19.47
	8175	W. A. Goehring	Horse-shoeing	4.50
	8176	John Bess & Co.	Dry goods and clothing	87.29
	8177	D. W. Rashnell	Stationery	128.70
	8178	Gronow & Schuchgen	Groceries	12.00
	8179	W. A. Mauser	House supplies	10.13
	8180	Omaha Daily Bee	Subscription	25.70
	8181	P. C. De Yoe	Hardware	8.85
	8182	Metzger Bros.	Clothing	9.00
	8183	Standard Oil Co.	Coal oil	18.00
	8184	Standard Oil Co.	Coal oil	18.00
	8185	S. T. Mattee	Groceries	8.10
	8186	John West	Veterinary service	12.00
	8187	Harle Hass & Co.	Drugs, etc.	1.96
	8188	Crane-Churchill Co.	Engineer's supplies	1.50
	8189	Duquette & Co.	Groceries	2.85
	8190	The Western Soap Co.	Soap chips	9.75



## STATEMENT—CONTINUED.

Date.	Warrant.	TO WHOM PAID.	OR WHAT ACCOUNT.	Amount.
1896.				
Nov.	8191	Council Bluffs Carpet Co.	Carpets	\$ 134.45
8192	O. W. Graham	Office railing		31.25
8193	Council Bluffs Paint, Oil & Glass Co.	Paints and brushes		22.08
8194	Fowler, Dick & Walker	Wall paper and paper hang- ing and dry goods		74.15
8195	Schultz & Hill	Blacksmithing and repairs		50.91
8196	Philip Killian	Painting		25.00
8197	Empke-Shugart Co.	Hardware		38.84
8198	Wickham Bros.	Strengthening west or boys' wing		226.35
8199	George A. Hoagland	Lumber		91.19
8200	Council Bluffs Coal and Ice Co.	Coal		104.45
8201	Nachtstals Supply Co.	Vulcanastum rope packing		1.51
8202	Council Bluffs Coal and Ice Co.	Coal		73.43
8203	Stephan Bros.	Ice		6.67
8204	Clint & Bryer	Gas fixtures		9.05
8205	W. A. Goehring	Shoes		9.00
8206	Gieray & Nicholls	Horsehoeling		24.56
8207	John Beno & Co.	Dry goods		16.00
8208	8 T. McAtee	Kiter box		22.55
8209	S. T. Maurer	Groceries		1.13
8210	D. W. Bushnell	Fruit keepers		100.00
8211	Duquette & Co.	Produce		21.57
8212	Harle, Haas & Co.	Drugs, etc.		9.51
8213	Fowler, Dick & Walker	Dry goods		15.54
8214	Hammer Lumber company	Lumber		69.23
8215	O. W. Graham	Repair supplies		41.55
8216	Roston state	House supplies		15.79
8217	J. B. Long	Wall paper & hanging same		105.79
8218	Schultz & Hill	Repair supplies		14.33
8219	Council Bluffs Paint, Oil & Glass Co.	Paints and brushes		17.57
8220	J. C. Bixby	Sewer pipe		21.06
8221	United States School Furniture Co.	School desks		72.39
8222	George A. Hoagland	Lumber		73.99
8223	N. W. Williams	Repair supplies		301.54
8224	John P. Weaver	Brick and sand		9.15
8225	The Singer Manufacturing Co.	Repair sewing machines		10.40
8226	Hunter Fan and Motor company	Water motor		61.60
8227	A. R. Koch company	Shelf brackets		20.21
8228	American Express company	Freight		10.90
8229	Ernecke & Saltsstein	Paints		112.50
8230	Champion Iron and Wire works	Window screens		45.00
8231	Wilson & Davis	Shoe stock		700.00
8232	Clapp, Cooper & Co.	Books		101.59
8233	Henry T. Coats & Co.	Books		30.00
8234	H. L. Smith & Co.	Blackboards		18.30
8235	S. B. Bryant	Carpenter's tools		150.00
8236	Armour & Co.	Hams		37.07
8237	Henry W. Rothert, superintendent	Miscellaneous accounts		46.02
8238	E. R. Schlick	Kitchen supplies		20.50
8239	A. Wallenberg	Setting boilers, payment on contract		215.00
Dec.	8240	Henry W. Rothert, superintendent.	Miscellaneous accounts	\$ 82.82
8241	Orchard & Wilhelm Carpet Co.	Furniture		10.00
8242	John P. Weaver	Boiler & eng. house & addi- tional boiler, payment on cont.		300.00
8243	Wickham Bros.	Mason work and setting sewer pipe		55.12
8244	Empke-Shugart company	Hardware		16.83
8245	Thomas Fontaine	Survey for building		1.00
8246	Council Bluffs Carpet company.	Repair supplies		17.27
8247	Groneweg & Schoentgen	Groceries		150.56
8248	J. B. Pace	Meats		126.29
8249	P. O. DeVoll	Hardware		32.49
8250	Ell Brown	Groceries		84.27
8251	Philip Killian	Shoes		15.40
8252	Sherwood Manufacturing company	Steam trap		11.10
8253	Jenkins Bros.	Wall paper & hanging same		24.25
8254	J. B. Long	Paints, oil and glass		35.70
8255	Council Bluffs Paint, Oil & Glass Co.	Electric light supplies		26.26
8256	Western Electric Supply Co.	"dry work, plus third"		169.43
8257	Sprague Iron works	Sunday School paper		18.00
8258	The Cong'l S. and Pub. Society.			

## STATEMENT—CONTINUED.

Date.	Warrant.	TO WHOM PAID.	OR WHAT ACCOUNT.	Amount.
1896.				
Dec.	8259	India Alkali works	Rayon	\$ 31.92
8260	Troy Laundry Machinery Co.	Machine covering		17.19
8261	Boardman Bros & Co.	Butter		175.22
8262	The Western Soap Co.	Soap chips		20.19
8263	Ell Brown	Groceries		12.28
8264	D. W. Bushnell	Stationery		114.45
8265	John Beno & Co.	Dry goods and clothing		112.33
8266	G. Brandenburg & Co.	Shoe shop supplies		112.32
8267	J. B. Pace	Meats		251.41
8268	Groneweg & Schoentgen	Groceries		490.82
8269	W. A. Maurer	Dining room supplies		122.50
8270	Empke, Shugart Co.	Hardware		8.76
8271	Crystal Mill and Grain Co.	Flour and feed		60.85
8272	Carpenter Paper Co.	Printing office supplies		134.43
8273	O. B. Coal and Ice Co.	Coal		52.55
8274	O. B. Coal and Ice Co.	Ice		32.31
8275	Duquette & Co.	Groceries		271.07
8276	Fowler, Dick & Walker	Dry goods		21.97
8277	W. A. Goehring	Horsehoeling		7.50
8278	Harle, Haas & Co.	Drugs, etc.		36.75
8279	Drs. Langhast & Smith	Medical attendance		67.37
8280	P. O. DeVoll	Hardware		11.25
8281	R. M. Argent	Shoes		41.75
8282	M. E. Washburn	Stabling		17.19
8283	Sarah B. B. Rohrer	Rent of pasture		131.65
8284	J. C. Hoffmann	Flour		7.45
8285	George A. Hoagland	Lumber		55.40
8286	S. S. Keller	Furniture		14.90
8287	S. T. McAtee	Groceries		15.00
8288	Has Lumber Co.	Lumber		10.95
8289	O. B. Randlett	Groceries		14.90
8290	Day & Hess	Rent of pasture		15.00
8291	Hollenberg Brothers	Moving rollers		1,633.27
8292	Henry W. Rothert, superintendent.	Pay roll, teachers		1,474.53
8293	Henry W. Rothert, superintendent.	Pay roll, officers and em- ployes		175.35
8294	John P. Weaver	Boiler and engine house and additional boiler, payment on contract		34.63
8295	John P. Weaver	Boiler and engine house, extra work		102.95
8296	John P. Weaver	Pump foundation		2.00
8297	John P. Weaver	Repairs in kitchen		87.10
8298	Herman Meyer	Potatoes		47.30
8299	Clint S. Byers	Shoes		28.63
8300	Clint S. Byers	Shoes		12.93
8301	Nebraska Telephone Co.	Rent and outside connec- tions		12.03
8302	Martin Hughes & Son	Sidewalk and roadways		272.75
8303	Martin Hughes & Son	Sidewalk and roadways		300.00
1897.				
Jan.	8304	Henry W. Rothert, superintendent.	Pay roll, teachers	\$ 8.54
8305	Monash, Youker & Co.	Engineer's supplies		5.42
8306	Horton School Supply Co.	Books		37.85
8307	Western Electric Co.	Electric lamps		1.50
8308	Ideal Boiler Works	Engineer's supplies		148.90
8309	Leather Preserver & Co.	Boat dressing		21.53
8310	United States School Furniture Co.	School desks		8.00
8311	Utica Steam Gauge Co.	Engineer's supplies		21.53
8312	Henry H. Worthington	Three pumps and fittings		13.70
8313	Chapman & Smith Co.	Bakery supplies		12.15
8314	H. Kohntamm & Co.	Laundry supplies		13.25
8315	Peter Henderson & Co.	Flower seeds		1,472.46
8316	Henry W. Rothert, superintendent.	Pay roll, officers and em- ployes		9.56
8317	A. J. Fish & Co.	Grate bars in bake oven		13.40
8318	Hoke Engraving Plate Co.	Printing press plates		15.40
8319	Frank E. Fette Mfg. Supply Co.	Paints		152.30
8320	Augustus Thomas & Co.	Blankets		

## STATEMENT—CONTINUED.

Date.	Warrant.	TO WHOM PAID.	ON WHAT ACCOUNT.	Amount.
1897.	Jan...			
8323		Armour Packing Co.	Meats	\$ 41.79
8324		A. G. Spalding & Bro.	Gymnasium supplies.	2.40
8325		John West	Veterinary service.	15.00
8326		John West	Veterinary service.	6.00
8327		Fleischmann & Co.	Yeast	3.38
8328		Wilson & Drake	Repairs on boilers and boiler breeching	317.92
8329		J. L. Brandies & Son.	Carpets, rugs, etc.	24.50
8330		Standard Oil Co.	Coal oil	74.99
8331		S. S. Keller	Furniture	115.25
8332		Stephen Bros.	Gas fixtures	1.90
8333		J. C. Hoffmayer	Flour	63.45
8334		D. W. Bushnell	School supplies.	177.34
8335		G. Brandenburg & Co.	Shoe shop supplies	3.15
8336		Carpenter Paper Co.	Printing office supplies.	4.84
8337		Champion Iron and Wire Works	Iron doors	35.00
8338		Crystal Mill and Grain Company	Flour and feed	57.40
8339		Western Electrical Supply Co.	Electric light supplies.	3.40
8340		J. C. Bixby	Sewer pipe	8.92
8341		Ell Brown	Groceries	235.15
8342		P. C. De Vol	Hardware	16.00
8343		Harle, Haas & Co.	Drugs, etc.	9.93
8344		Western Union Telegraph Co.	Telegrams	2.13
8345		M. E. Weatherbee	Stabling	9.00
8346		Charles Swaine	Hardware	1.10
8347		John West	Veterinary service	12.00
8348		D. S. Pile	Harness	2.65
8349		Groneweg & Schoentgen	General supplies	148.83
8350		W. A. Maurer	Dining room supplies	5.44
8351		Council Bluffs Paint, Oil & Glass Co.	Groceries	2.00
8352		Council Bluffs Gas & Elec. Light Co.	Rubber taping	.90
8353		B. M. Sargent	Shoes	18.55
8354		Sprague Iron Works	Cutting and threading pipe	10.10
8355		Stephen Bros.	House supplies	16.13
8356		John Beno & Co.	Dry goods and clothing	105.29
8357		Clark & Wetzel	Sewing room supplies	44.20
8358		S. T. McAtee	Groceries	17.10
8359		Boardman Bros. & Co.	Butter	155.04
8360		Daquette & Co.	Groceries	74.00
8361		Drs. Handt & Smith	Farmer and garden supplies	69.07
8362		J. F. Wilcox	Flowers	7.40
8363		Schulte & Hill	Blacksmithing	2.15
8364		George A. Hogland	Portland cement	1.00
8365		W. A. Goehring	Horseshoeing	2.00
8366		Fowler, Dick & Walker	Dry goods	15.00
8367		Shugart & Garan	Farm and garden supplies	3.38
8368		Council Bluffs Coal and Ice Co.	Coal	400.13
8369		Empke-Shugart company	Hardware	25.36
8370		J. B. Atkins	General supplies	62.83
8371		Fleischmann & Co.	Yeast	5.00
8372		Council Bluffs Coal and Ice Co.	Ice	91.73
8373		Henry W. Rothert, superintendent	Disinfectant	50.37
8374		G. S. Blakeslee & Co.	Dishwashing machine	267.91
8375		Iowa State Register	Subscription	16.00
8376		American Elec. Heating Corp.	Electric stove	9.60
8377		India Alkali Works	Savozan	31.29
8378		M. J. Canning	Sewing room supplies	9.00
8379		J. C. Vause	House supplies	0.75
8380		Augustus Thomas & Co.	Crash and blankets	23.69
8381		B. A. Tyler	Ice	108.05
8382		Chicago & N. W. Western Ry. Co.	Freight	3.35
8383		Chicago, Burlington & Q. Ry. Co.	Freight	8.73
8384		Chicago Fire Proof Covering Co.	Pipe covering	144.20
8385		Boardman Bros. & Co.	Butter	164.16
8386		Boardman Bros. & Co.	Butter	252.80
8387		O. M. & St. P. Ry. Co.	Freight	4.00
8388		George H. Chapman	Picture frames	6.75
8389		George H. Chapman	Art supplies	9.96
8390		L. O. Williams	Groceries and provisions	35.65
8391		Henry W. Rothert, superintendent	Household accounts	125.98
8392		C. & S. W. Ry. Co.	Freight	18.96
8393		O. B. & Q. Ry. Co.	Freight	16.76
8394		O. B. & Q. Ry. Co.	Freight	4.92

## STATEMENT—CONTINUED.

Date.	Warrant.	TO WHOM PAID.	ON WHAT ACCOUNT.	Amount.
1897	Feb...			
8395		O. B. & Q. Ry. Co.	Freight	\$ 54.00
8396		O. B. & Q. Ry. Co.	Freight	16.96
8397		O. B. & Q. Ry. Co.	Freight	6.00
8398		O. B. & Q. Ry. Co.	Freight	24.80
8399		O. B. & Q. Ry. Co.	Freight	19.29
8400		O. N. & W. Ry. Co.	Freight	8.44
8401		O. N. & W. Ry. Co.	Freight	1.71
8402		O. M. & St. P. Ry. Co.	Freight	1.02
8403		O. M. & St. P. Ry. Co.	Freight	2.80
8404		O. N. & W. Ry. Co.	Freight	.37
8405		O. B. & Q. Ry. Co.	Freight	.30
8406		O. B. & Q. Ry. Co.	Freight	.50
8407		O. N. & W. Ry. Co.	Freight	.50
8408		O. N. & W. Ry. Co.	Freight	.50
8409		O. N. & W. Ry. Co.	Freight	.50
8410		Thomas Bowman, postmaster	Postage	26.55
8411		C. L. Gillette	Painting	12.00
8412		C. L. Gillette	Painting	5.75
8413		O. & St. L. Ry. Co.	Freight on ice	25.00
8414		J. B. Atkins	Drugs, etc.	36.12
8415		J. B. Atkins	Drugs, etc.	34.97
8416		J. B. Atkins	Drugs, etc.	30.80
8417		J. H. Pace	Meats	411.04
8418		O. B. & Q. Ry. Co.	Freight	1.25
8419		H. A. Cox	Coal	101.06
8420		Western Electrical Supply Co.	Electric light supplies	4.30
8421		United States Supply Co.	Valve and rope packing	5.40
8422		The Singer Manufacturing Co.	Sewing machine needles	.30
8423		R. Handt	Groceries	5.40
8424		C. B. Jacquemin & Co.	Clock and repairing clock	7.75
8425		Western Union Telegraph Co.	Telegrams	1.67
8426		Stephen Bros.	Gas lamps and tubing	3.35
8427		Hammer Lumber Co.	Lumber	34.30
8428		John West	Veterinary service	18.00
8429		Schultz & Hill	Blacksmithing	2.40
8430		Drs. Handt & Smith	Medical attendance	42.40
8431		B. A. Tyler	Hauling ice	23.00
8432		M. E. Weatherbee	Stabling	14.50
8433		S. T. McAtee	Groceries	19.45
8434		P. C. De Vol	Hardware	7.45
8435		Harle, Haas & Co.	Drugs, etc.	2.80
8436		Council Bluffs Coal and Ice Co.	Coal	70.00
8437		Ell Brown	Groceries	133.48
8438		John Rowe & Co.	General supplies	11.75
8439		S. M. Williams	Sewing machine stand	1.50
8440		Ree Lumber Co.	Lumber	34.30
8441		Trinity ladies	Meat meal	10.20
8442		S. S. Keller	Furniture	15.50
8443		D. W. Bushnell	Stationery	41.76
8444		W. A. Goehring	Horseshoeing	8.00
8445		Daquette & Co.	Groceries	98.29
8446		J. C. Hoffmayer	Flour	65.25
8447		Stewart Bros.	Groceries	179.40
8448		John Beno & Co.	Dry goods and clothing	7.74
8449		J. H. Pace	Meats	388.72
8450		W. A. Maurer	Dining room supplies	70.07
8451		Carpenter Paper Co.	Printing office supplies	7.80
8452		Metcalf Bros.	Clothing	81.45
8453		O. Brandenburg & Co.	Shoe shop supplies	130.52
8454		Fleischmann & Co.	Yeast	5.00
8455		Standard Oil Co.	Coal oil	30.94
8456		American Express Co.	Salmon	10.00
8457		Crystal Mill and Grain Co.	Flour and feed	7.80
8458		Groneweg & Schoentgen	Groceries	302.80
8459		Empke, Shugart & Co.	Hardware	23.30
8460		Fowler, Dick & Walker	Dry goods	27.44
8461		Western Soap Co.	Soap chips	18.10
8462		George A. Hogland	Portland cement	.45
8463		J. T. Findley	Sewing machine stands	2.00
8464		Clark & Wetzel	Sewing room supplies	4.40
8465		Unit-States Supply Co.	Electric light supplies	2.00
8466		Standard Oil Co.	Oil	15.74
8467		Charles Swaine	Hardware	5.70



## STATEMENT—CONTINUED.

Date.	WARRANT.	TO WHOM PAID.	ON WHAT ACCOUNT.	Amount.
Feb.				
1897				
8468		Western Soap Co.	Soap chips	\$ 20.28
8469		Brace & Co.	Shoe shop supplies	1.50
8470		Fowler, Dick & Walker	Dry goods	61.70
8471		John Beno & Co.	Dry goods and clothing	264.24
8472		Ed. Brown	Groceries	300.00
8473		J. H. Pace	Meats	316.15
8474		Council Bluffs Coal and Ice Co.	Coal	664.50
8475		P. C. DeVol	Hardware	11.49
8476		Drs. Hanchett & Smith	Medical attendance	97.00
8477		John West	Veterinary service	21.00
8478		M. E. Weatherbee	Stabling	10.00
8479		S. T. McAtee	Groceries	27.40
8480		H. S. West	Medical attendance	3.00
8481		L. O. Brackley	Stationery	3.99
8482		Schultz & Hill	Blacksmithing	3.35
8483		Western Union Telegraph Co.	Telegrams	6.00
8484		W. A. Maurer	Dining room supplies	29.70
8485		Nebraska Telephone Co.	Rent & outside connections	12.73
8486		Empkie, Shugart Co.	Hardware	18.77
8487		Empkie, Shugart Co.	Hardware	1.50
8488		D. W. Bushnell	Stationery	25.45
8489		Council Bluffs Paint, Oil & Glass Co.	General supplies	6.15
8490		W. A. Goehring	Horsehoofing	4.00
8491		Carpenter Paper Co.	Printing office supplies	39.98
8492		George A. Hoagland	Building paper	1.24
8493		Clint S. Byers	Shoes	25.30
8494		Harle, Hass & Co.	Drugs, etc.	24.88
8495		Fielschmann & Co.	Yeast	5.63
8496		L. D. Lutzinger	Trunk keys	2.50
8497		C. B. Sandell	Groceries	7.55
8498		Metz & Bros.	Clothing	13.03
8499		B. M. Sargent	Shoes	11.25
8500		J. C. Hoffmann	Shoes	67.25
8501		Western Electrical Supply Co.	Electric light supplies	13.70
8502		Crystal Mill and Grain Co.	Flour and feed	89.90
8503		S. S. Koller	Furniture	9.00
8504		Duquette & Co.	Groceries and provisions	75.58
8505		Camp Bros.	Hospital supplies	2.25
8506		Gronowitzer & Schoontgen	Groceries	261.37
8507		P. H. Wind	Extra work on boiler and engine house	36.20
8508		Rex Lumber Co.	Lumber	33.65
8509		Gilbert Bros.	Ice	88.50
8510		Henry W. Rothert, superintendent	Pay roll, teachers	1,750.04
8511		Henry W. Rothert, superintendent	Pay roll, officers & employes	1,442.40
8512		John G. Woodward & Co.	Entertainment supplies	8.00
8513		Daily Bee	Subscription	9.90
8514		Mrs. Minnie Pfeiffer	Subscription	2.00
8515		P. C. DeVol	Hardware	15.28
8516		Troy Laundry Machine Co.	Irons for laundry	8.40
8517		Armour Packing Co.	Hams	15.75
8518		Metz & Bros.	Clothing	43.64
8519		W. A. Goehring	Horsehoofing	10.00
8520		American Type Foundry	Printing office supplies	6.75
8521		Council Bluffs Paint, Oil & Glass Co.	General supplies	8.94
8522		B. M. Sargent	Shoes	37.35
8523		W. A. Maurer	Dining room supplies	40.21
8524		Darfee Furniture Co.	Furniture	16.00
8525		J. C. Hoffmann	Flour	67.25
8526		George A. Hoagland	Time	1.22
8527		F. B. Kennard	Repair supplies	6.10
8528		Cole & Cole	Kitchen supplies	13.47
8529		H. C. Raymond	House supplies	12.22
8530		Crystal Mill and Grain Co.	Flour and feed	147.80
8531		Fielschmann & Co.	Yeast	4.50
8532		Carter Hardware Co.	Lanterns	16.75
8533		United States Supply Co.	Engineer's supplies	8.93
8534		Duquette & Co.	Groceries	54.55
8535		Empkie, Shugart Co.	Hardware	15.73
8536		D. W. Bushnell	School supplies	46.90
8537		Western Union Telegraph Co.	Telegrams	3.51
8538		Ed. Brown	Groceries	30.24
8539		M. E. Weatherbee	Stabling	7.75

## STATEMENT—CONTINUED.

Date.	WARRANT.	TO WHOM PAID.	ON WHAT ACCOUNT.	Amount.
Feb.				
1897				
8540		John West	Veterinary service	\$ 18.00
8541		Clint S. Byers	Shoes	31.40
8542		Harle, Hass & Co.	Drugs, etc.	6.73
8543		Drs. Hanchett & Smith	Medical attendance	129.73
8544		Rex Lumber company	Lumber	37.50
8545		John Van Rango & Co.	Fitchen supplies	11.55
8546		C. T. McAtee	Groceries and provisions	2.15
8547		Carpenter Paper company	Groceries	7.26
8548		Richmond Safety Gate company	Printing office supplies	21.10
8549		Richmond Safety Gate company	Elevator repairs	2.00
8550		M. J. Conning & Co.	Sewing room supplies	1.65
8551		H. H. Spelman	Groceries	2.00
8552		American Express company	Salmon	5.50
8553		Stephan Bros.	Engineer's supplies	11.90
8554		J. Sullivan	Pop corn	1.00
8555		Richmond Safety Gate company	Elevator repairs	4.30
8556		U. Brandenburg & Co.	Shoe shop supplies	144.68
8557		Nebraska Telephone company	Rent & outside connections	11.55
8558		E. Zabriskie, receiver	Name plates	4.00
8559		Fowler, Dick & Walker	Dry goods	124.42
8560		Henry W. Rothert, superintendent	Petty cash advanced	282.00
8561		W. A. Wickham	Petty cash advanced	9.60
8562		Omaha Carpet and Bag company	Rugs	14.00
8563		Chicago, Burlington & Quincy Ry Co.	Freight	4.70
8564		Chicago, Burlington & Quincy Ry Co.	Freight	12.45
8565		Henry W. Rothert, superintendent	Petty cash advanced	284.00
8566		Walker Manufacturing company	Office supplies	1.00
8567		Ben Frenz	Labor	25.00
8568		L. Green	Weather strips	35.00
8569		T. W. Mathews	Maps	4.50
8570		Thomas Bowman, postmaster	Postage	20.00
8571		Henry W. Rothert, superintendent	Petty cash advanced	149.40
8572		Omaha & Lons Railway Co.	Freight	1.50
8573		Council Bluffs Carpet company	House supplies	68.83
8574		Henry W. Rothert, superintendent	Petty cash advanced	73.25
8575		Henry W. Rothert, superintendent	Miscellaneous supplies	10.00
8576		H. L. Smith	Art supplies	.30
8577		Henry E. Worthington	Engineer's supplies	8.00
8578		Henry E. Worthington	Engineer's supplies	1.50
8579		Henry W. Rothert, superintendent	Pay roll, teachers	1,665.27
8580		Henry W. Rothert, superintendent	Pay roll, officers & employes	1,490.52
8581		Charles H. Bryant	Balance on pay roll	1.00
8582		S. B. Bryant & Co.	Carpenter shop supplies	4.50
8583		Robert Henderson & Co.	Flower seeds	1.70
8584		Charles H. Bryant	Printing office supplies	10.00
8585		India Alkali works	Savonar	31.72
8586		Dearborn Drug & Chemical works	Engineer's supplies	37.72
8587		Groesbeck & Salmstein	Paints	12.50
8588		G. S. Blankenslee & Co.	Repairs, dish wash mach.	39.22
8589		A. G. Spaulding & Bros.	Gymnasium supplies	7.00
8590		The Bicycle Step Ladder company	Engineer's supplies	14.00
8591		Boardman Bros. & Co.	Butter	150.00
8592		M. E. Weatherbee	Stabling	5.75
8593		Mrs. Theo. Bray	Shoe shop supplies	1.00
8594		Sandwich Manufacturing Co.	Farm supplies	1.50
8595		Schultz & Hill	Blacksmithing	1.50
8596		Western Union Telegraph Co.	Telegrams	1.25
8597		Sprague Iron Works Co.	Threading pipe	10.25
8598		Clark & Weiszel	Sewing room supplies	7.00
8599		J. A. Atch	Drugs, etc.	11.75
8600		Nebraska Telephone Co.	Rent and outside connections	7.00
8601		Vogeler & Son	Farm supplies	6.50
8602		Stephan Bros.	House supplies	10.00
8603		George A. Hoagland	Lumber	4.20
8604		John West	Veterinary service	12.00
8605		Augustus Thoburn & Co.	Dry goods	26.00
8606		B. M. Sargent	Shoes	21.75
8607		W. A. Maurer	Dining room supplies	9.04
8608		T. McAtee	Groceries	11.07
8609		P. C. DeVol	Hardware	11.37
8610		Fowler, Dick & Walker	Dry goods	19.39
8611		J. B. Baker	Drugs, etc.	20.24
8612		Preccella Publishing Co.	Magazines	5.02



## STATEMENT—CONTINUED.

Date.	WARRANT.	TO WHOM PAID.	ON WHAT ACCOUNT.	Amount.
1897				
April	8813	Henry W. Rothert, superintendent	Miscellaneous accounts.....	\$ 24.88
	8814	P. H. Wind	Boarding.....	64.75
	8815	Henry W. Rothert, superintendent	Pay roll, officers & employees.....	877.56
	8816	Henry W. Rothert, superintendent	Petty cash advanced.....	1,080.00
	8817	Henry W. Rothert, superintendent	Class tree sign.....	183.18
	8818	The Gillette sign Works.....	Pipe and fittings.....	2.50
	8819	Crane-Churchill Co.....	Pipe and fittings.....	523.93
	8820	Crane-Churchill Co.....	Pipe and fittings.....	194.44
	8821	Crane-Churchill Co.....	Pipe and fittings.....	112.96
	8822	Crane-Churchill Co.....	Pipe and fittings.....	53.03
	8823	Crane-Churchill Co.....	Pay roll, officers & employees.....	18.27
	8824	Henry W. Rothert, superintendent	Freight.....	456.67
	8825	Henry W. Rothert, superintendent	Pay roll, teachers.....	796.71
	8826	C. M. & St. P. Railway Co.....	Freight.....	1.15
	8827	John Lewis Childs.....	Seeds.....	14.10
May	8828	A. T. Flickinger	Discount on state warrant.....	82.25
	8829	Omaha Paper Box Co.....	Office supplies.....	3.50
	8830	A. Wallenberg.....	Setting boilers, payment on contract.....	250.00
	8831	A. Wallenberg.....	Setting boilers, payment on contract.....	250.00
	8832	A. T. Flickinger.....	Service as treasurer.....	100.00
	8833	Mrs. J. Kintz.....	Writing diplomas.....	6.50
	8834	J. W. Finkle.....	Masonry work.....	1.30
	8835	Henry W. Rothert, superintendent	Pay roll, part of officers and employees.....	325.44
	8836	Henry W. Rothert, superintendent	Petty cash advanced.....	326.07
	8837	Henry W. Rothert, superintendent	Miscellaneous accounts.....	27.97
	8838	Henry W. Rothert, superintendent	Freight.....	4.94
	8839	C. & N. W. Railway Co.....	Pay roll, part of officers and employees.....	367.80
	8840	Henry W. Rothert, superintendent	Pay roll, part of officers and employees.....	397.00
	8841	Henry W. Rothert, superintendent	Pay roll, part of officers and employees.....	103.20
	8842	Henry W. Rothert, superintendent	Petty cash advanced.....	250.91
	8843	Henry W. Rothert, superintendent	Petty cash advanced.....	250.91

## CURRENT FUND.

DATE.	DEBTOR.	AMOUNT.	DATE.	CREDITOR.	AMOUNT.
1895			1895		
July 1	To balance.....	\$ 115.28	July	By current bills.....	\$ 8,070.35
July 3	To state warrant.....	10,235.00	Aug	By current bills.....	1,554.90
July 31	To transfer, petty cash.....	743.26	Sept	By current bills.....	53.75
Oct 15	To transfer, petty cash.....	1,600.00	Oct	By current bills.....	6,167.22
Oct 19	To state warrant.....	10,175.00	Nov	By c't bills and wages.....	945.13
1896			Dec	By c't bills and wages.....	6,817.32
Jan 21	To advanced to special fund.....	4.00	1896		
Feb. 4	To state warrant.....	3,925.00	Jan.	By current bills.....	1,560.93
Feb. 4	To transfer, petty cash.....	1,920.00	Feb.	By c't bills and wages.....	3,295.80
Mar. 13	To state warrant.....	4,003.00	March	By c't bills and wages.....	7,141.47
Mar. 17	To state warrant.....	4,000.00	April	By current bills.....	8,122.50
Mar. 17	To advanced to special fund.....	45.17	May	By current bills.....	336.00
April 20	To state warrant.....	10,875.00	June	By current bills.....	563.08
June 20	To advanced to special fund.....	1.50	July	By current bills.....	6,818.00
July 8	To state warrant.....	10,625.00	Sept.	By c't bills and wages.....	1,450.07
July 16	To advanced to special fund.....	14.45	Oct.	By current bills.....	50.36
Oct 21	To state warrant.....	10,150.00	Nov	By current bills.....	1,845.80
1897			Dec	By current bills.....	3,558.22
Jan. 28	To state warrant.....	10,500.00	1897		
Feb. 19	To transfer, petty cash.....	1,793.00	Jan.	By current bills.....	3,904.15
April 20	To advanced to special fund.....	18.00	Feb.	By c't bills and wages.....	12,530.00
April 30	To advanced to special fund.....	418.57	March	By c't bills and wages.....	7.19
June 29	To transfer, petty cash.....	473.40	April	By c't bills and wages.....	1,259.43
June 30	To transfer, petty cash.....	3,389.02	May	By current bills.....	842.25
			June	By current bills.....	708.18
			June 30	By c't bills and wages.....	1,750.32
				By balance.....	2,324.56
Total.....		\$83,305.95	Total.....		\$83,305.95

## ORDINARY FUND.

DATE.	DEBTOR.	AMOUNT.	DATE.	CREDITOR.	AMOUNT.
1895			1895		
July 1	To balance.....	\$ 12.00	July 6	By salaries and wages.....	\$ 1,490.00
July 3	To state warrant.....	5,250.00	July 13	By salaries and wages.....	1,534.43
Oct 19	To state warrant.....	5,250.00	Aug 12	By salaries and wages.....	1,014.00
1896			Sept. 7	By salaries and wages.....	1,102.13
Jan 11	To state warrant.....	5,250.00	Oct. 11	By salaries and wages.....	2,159.50
April 17	To state warrant.....	5,250.00	Nov. 13	By salaries and wages.....	2,308.29
July 8	To state warrant.....	5,250.00	1896		
Oct 21	To state warrant.....	5,250.00	Jan. 11	By salaries and wages.....	2,301.74
1897			Feb. 13	By salaries and wages.....	1,948.36
Jan. 28	To state warrant.....	5,250.00	April 20	By salaries and wages.....	3,143.34
April 5			May 11	By salaries and wages.....	3,128.78
			June 4	By salaries and wages.....	2,541.33
			July 11	By salaries and wages.....	1,870.23
			Aug. 4	By salaries and wages.....	842.40
			Oct. 12	By salaries and wages.....	3,052.50
			Nov. 19	By salaries and wages.....	3,181.10
			Dec. 7	By salaries and wages.....	3,107.80
			1897		
			Jan. 5	By salaries and wages.....	3,195.73
			April 7	By salaries and wages.....	1,957.02
			April 22	By salaries and wages.....	254.58
			June 30	By balance.....	12.00
Total.....		\$ 42,012.00	Total.....		\$ 42,012.00

## APPROPRIATIONS OF THE TWENTY-THIRD GENERAL ASSEMBLY.

## STRENGTHENING FRONT WALLS FUND.

DATE.	DEBITOR.	AMOUNT.	DATE.	CREDITOR.	AMOUNT.
1895 July 1	To balance .....	\$ 243.85	1895 Aug. 12	By moneys expended as per vouchers on file .....	166.58
			1897 June 30	By balance .....	76.97
	Total .....	\$ 243.85		Total .....	\$ 243.85

## APPROPRIATIONS OF THE TWENTY-FOURTH GENERAL ASSEMBLY.

## REPAIRS TO ELEVATOR FUND.

1895 July 1	To balance .....	\$ 296.27	1895-6-7	By moneys expended as per voucher on file .....	\$ 194.45
			1897 June 30	By balance .....	\$ 101.82
	Total .....	\$ 296.27		Total .....	\$ 296.27

## APPROPRIATIONS OF THE TWENTY-FIFTH GENERAL ASSEMBLY.

## LIBRARY FUND.

1895 July 1	To balance .....	\$ 80.98	1895-6	By moneys expended as per vouchers on file .....	\$ 130.96
Oct. 19	To state warrant .....	50.00			
	Total .....	\$ 130.98		Total .....	\$ 130.96

## IRON SHUTTER AND DOOR FUND.

1895 July 1	To balance .....	\$ 275.00	1895-7	By moneys expended as per vouchers on file .....	\$ 83.00
Oct. 19	To state warrant .....	125.00			
			1897 June 30	By balance .....	417.00
	Total .....	\$ 500.00		Total .....	\$ 500.00

## FIRE HOSE AND PIPE FUND.

1895 July 1	To balance .....	\$ 85.73	1895	By moneys expended as per vouchers on file .....	\$ 125.73
Oct. 19	To state warrant .....	50.00			
	Total .....	\$ 135.73		Total .....	\$ 125.00

## COLD STORAGE FUND.

1895 Oct. 19	To state warrant .....	\$ 500.00	1895 July 1 1896-6	By balance .....	\$ 49.41
				By moneys expended as per vouchers on file .....	450.59
	Total .....	\$ 500.00		Total .....	\$ 500.00

## REPAIR FUND.

1895 Oct. 19	To state warrant .....	\$ 500.00	1895 July 1	By balance .....	\$ 500.00
	Total .....	\$ 500.00		Total .....	\$ 500.00

## ELECTRIC LIGHT FUND.

1895 Oct. 19	To state warrant .....	\$ 250.00	1895 July 1	By balance .....	\$ 250.00
	Total .....	\$ 250.00		Total .....	\$ 250.00

## BED ROOM FURNITURE AND BEDDING FUND.

1895 Oct. 19	To state warrant .....	\$ 125.00	1895 July 1	By balance .....	\$ 125.00
	Total .....	\$ 125.00		Total .....	\$ 125.00

## COOKING SCHOOL AND GYMNASIUM FUND.

1895 July 1	To balance .....	\$ 278.75	1895 Oct. 21	By moneys expended as per vouchers on file .....	\$ 1,526.75
Oct. 19	To state warrant .....	1,250.00			
	Total .....	\$ 1,528.75		Total .....	\$ 1,526.75

## BAKERY AND BAKE OVEN FUND.

1895 Oct. 19	To state warrant .....	\$ 500.00	1895 July 1	By balance .....	\$ 500.00
	Total .....	\$ 500.00		Total .....	\$ 500.00

## NEW ROOF ON SCHOOLHOUSE FUND.

1895 July 1	To balance .....	\$ 194.20	1895 Nov. 14	By balance unex- pended moneys re- turned to state treasurer .....	\$ 309.20
Oct. 19	To state warrant .....	125.00			
	Total .....	\$ 309.20		Total .....	\$ 309.20

## PIPE AND BOILER COVERING FUND.

1895 Oct. 19	To state warrant .....	\$ 50.00	1895 July 1	By balance .....	\$ 50.00
	Total .....	\$ 50.00		Total .....	\$ 50.00

## APPROPRIATIONS OF THE TWENTY-SIXTH GENERAL ASSEMBLY.

## LIBRARY FUND.

1897 April 22	To state warrant .....	\$ 200.00	1896-7	By moneys expended as per vouchers on file .....	\$ 42.10
			1897 June 30	By balance .....	157.90
	Total .....	\$ 200.00		Total .....	\$ 200.00

## STRENGTHENING WEST OR BOYS' WING FUND.

1897 April 22	To state warrant .....	\$ 1,500.00	1896-7	By moneys expended as per vouchers on file .....	\$ 1,500.00
	Total .....	\$ 1,500.00		Total .....	\$ 1,500.00

## RESERVOIR, CISTERN AND PUMP FUND.

1897			1896-7		
April 22	To state warrant.....	\$ 2,000.00	By moneys expended as per vouchers on file.....	\$ 1,873.23	
			1897	By balance .....	626.71
			June 30		
	Total.....	\$ 2,000.00	Total.....	\$ 2,000.00	

## REPAIR TO CHILDREN'S DINING ROOM FUND.

1897			1896-7		
April 22	To state warrant ....	\$ 300.00	By moneys expended as per vouchers on file.....	\$ 200.00	
			Total.....	\$ 200.00	
	Total.....	\$ 300.00	Total.....	\$ 200.00	

## REPAIR FUND.

1897			1896-7		
April 22	To state warrant.....	\$ 2,000.00	By moneys expended as per vouchers on file.....	\$ 2,000.00	
			Total.....	\$ 2,000.00	
	Total.....	\$ 2,000.00	Total.....	\$ 2,000.00	

## SIDEWALK AND GROUNDS FUND.

1897			1896-7		
April 22	To state warrant ....	\$ 500.00	By moneys expended as per vouchers on file.....	\$ 500.00	
			Total.....	\$ 500.00	
	Total.....	\$ 500.00	Total.....	\$ 500.00	

## FURNITURE IN SCHOOL AND STUDY ROOM FUND.

1897			1896-7		
April 22	To state warrant ....	\$ 200.00	By moneys expended as per vouchers on file.....	\$ 200.00	
			Total.....	\$ 200.00	
	Total.....	\$ 200.00	Total.....	\$ 200.00	

## ICE HOUSE FUND.

1897			1897		
April 22	To state warrant ....	\$ 500.00	June 30. By balance .....	\$ 500.00	
			Total.....	\$ 500.00	
	Total.....	\$ 500.00	Total.....	\$ 500.00	

## BOILER AND ENGINE HOUSE AND ADDITIONAL BOILER FUND.

1897			1896-7		
April 22	To state warrant .....	\$ 10,000.00	By moneys expended as per vouchers on file.....	\$ 9,583.07	
			1897	By balance .....	416.93
			June 30		
	Total.....	\$ 10,000.00	Total.....	\$ 10,000.00	

## PROVIDENTIAL FUND.

1897			1896		
April 22	To state warrant....	\$ 379.03	By moneys expended as per vouchers on file.....	\$ 379.03	
			Total.....	\$ 379.03	
	Total.....	\$ 379.03	Total.....	\$ 379.03	

## BALANCES.

1897			1897		
June 30	Current fund .....	\$ 2,334.26	June 30	By balance .....	\$ 4,633.95
June 30	Ordinary fund .....	15.00			
June 30	Strengthening front walls fund .....	73.97			
June 30	Repair to elevator and iron shutter and door fund .....	101.82			
June 30	Library fund .....	417.00			
June 30	Reservoir, cistern and pump fund .....	127.00			
June 30	Ice house fund .....	626.77			
June 30	Boiler, engine house, and additional building fund .....	500.00			
	Total.....	\$ 4,633.95	Total.....	\$ 4,633.95	

## BALANCE SHEET.

State of Iowa in account with A. T. Flickinger, Treasurer.

DATE.	DEBTOR.	AMOUNT.	DATE.	CREDITOR.	AMOUNT.
1895			1897		
July 1	To balance.....	\$ 193.95	May 8	By warrants paid to date as per detailed statement.....	\$ 132,405.58
	To moneys received to date as per detailed statement.....	142,234.98	May 8	By F. O. Gleason, treas.	3,023.35
	Total.....	\$142,430.93	Total.....	\$142,430.93	

A. T. FLICKINGER,  
Treasurer.

## BALANCE SHEET.

State of Iowa in account with F. O. Gleason, Treasurer.

DATE.	DEBTOR.	AMOUNT.	DATE.	CREDITOR.	AMOUNT.
1897			1897		
May 8	To amount received from A. T. Flickinger, treasurer .....	\$ 3,023.35	June 30	By warrants paid to date as per detailed statement.....	\$ 2,253.82
June 30	To transfer petty cash .....	171.49	June 30	By balance .....	4,633.65
June 30	To transfer petty cash .....	3,389.02			
	Total.....	\$ 6,583.77	Total.....	\$ 6,887.77	

F. O. GLEASON,  
Treasurer.



## APPLICATION.

IOWA SCHOOL FOR THE DEAF, COUNCIL BLUFFS.

Free to all the deaf children of school age in the state. The state furnishes, without charge, boarding, lodging, washing and tuition. Parents pay only for transportation to and from the school, and clothing.

1. Full name of applicant.....
2. The day, month and year of birth.....
3. Where was he born?.....
4. The cause of deafness; if not born deaf, when and how he became deaf.....
5. Is the deafness total or partial? If the latter, state the degree of hearing?.....
6. Have any attempts been made to remove the deafness, and if so, with what success?.....
7. Has he had any acute disease or received any bodily injury?.....
8. Is he laboring under any bodily infirmity, defective vision, eruption, malformation, swelling, rupture, etc.?.....
9. Is he bright and active, or dull?.....
10. Has he ever used liquors or tobacco?.....
11. Has he ever had small-pox, scarlet fever, spinal fever, measles, whooping cough, mumps, or been vaccinated?.....
12. Are there any cases of deafness in the family, among relatives or ancestors?.....
13. Has he shown any taste for any particular trade or business, or been accustomed to regular employment?.....
14. Have any attempts been made to impart instruction?.....
15. Is there any ability to articulate or read on the lips?.....
16. Were the parents related before marriage? If so, how?.....
17. The full names of parents.....
18. The occupation of the father.....
19. The postoffice address of the parents, town and county.....
20. Name, age and address of any other deaf child in your neighborhood.....

## RULES ORDERED BY THE BOARD OF TRUSTEES.

GOVERNING OFFICERS, RESIDENT TEACHERS AND EMPLOYES.

## RULE I.

The hospitalities of the institution can be extended only through the superintendent, and no courtesies as to meals or rooms can be offered by anyone without first receiving that officer's consent; this to apply to relatives, friends, parents and patrons.

## RULE II.

A record shall be kept of all visitors, and when meals or rooms are furnished, the same shall be reported to the board by the superintendent.

## RULE III.

The conveyances and horses belonging to the state are not to be used for private purposes or the accommodation of anyone, save in the discretion of the superintendent, it being distinctly understood that no rights can be claimed appertaining thereto except for the purpose of attending church. In no case shall the superintendent permit the service of teams for social or personal purposes if at such time the needs of the institution or the benefit to the children demand their use.

## RULE IV.

All private rooms in the main building shall be subject to inspection for sanitary purposes by the superintendent at such times as may be deemed proper by him, and not less than once a month.

## RULE V.

Meals shall be served promptly at the time stated in time tables, and no one shall have the right to claim service at any or later time, except in case of sickness.

## RULE VI.

Pupils are not servants, and where the service of any pupil, when not at school, for any regular work or assistance to officers, teachers or employees is wanted, request must first be made at the office, permission obtained and compensation agreed upon. Incidental service of scholars not included in above.

## RULE VII.

All lights in private rooms shall be extinguished at 10 P. M. Whenever this rule is not complied with, unless suspended in individual cases by the superintendent, for good cause, the expense thereby incurred shall be deducted at each monthly payment.

## RULE VIII.

Whereas it is expected that each officer, teacher, and employe will contribute his or her share in securing proper economy in light, heat, and water supply, a strict attention to the rules governing the same will be enforced. When rooms are not used, the lights, either electric or gas, must be extinguished, the radiators must be closed, and at all times a proper attention to closing of doors and windows by everyone exacted. All will be held accountable for a useless waste of water.

## RULE IX.

All breakages and damages to furniture, apparatus, or buildings, whether made by children or adults, shall be immediately thereafter reported at the office, and whenever it shall be clearly shown that same has occurred through carelessness or negligence, the cost of repairing same shall be charged to the party guilty thereof.

## RULE X.

The time of officers and employes belongs to the state for such hours as may be designated by the superintendent or agreed upon when entering service, and any absence from duty on account of personal business shall not be permitted unless by consent of superintendent, and then only for an urgent and important cause.

## RULE XI.

The superintendent shall have the right to appoint or discharge. In all cases where an officer or employe desires to sever his or her official connection with the institution, he or she shall give notice thereof to the superintendent fifteen days prior thereto.

## RULE XII.

The clock in the superintendent's office shall be standard time, and all clocks and watches must be governed thereby.

A proper recognition of and a willing compliance with above rules will insure a satisfactory and contented relationship with and among all parties concerned.

## GOVERNING PUPILS.

1. The pupils must be respectful and obedient at all times.
2. They must be cleanly in their person and neat in their dress.
3. They must behave in an orderly manner at all times and in all places.
4. They must not indulge in rough playing, scuffling, or running in the halls or rooms of the buildings.
5. They must not deface the buildings, damage the furniture, books, or other property of the institution, nor make unnecessary work by throwing things of any kind on the floor or about the buildings or grounds.
6. They must practically observe the regular order of the day.
7. They must not leave the grounds without permission of the superintendent.
8. Pupils living in the city are permitted to go home on Saturdays after bathing hour and must return before 2 o'clock P. M. on Sundays, unless especially ordered otherwise by the superintendent.
9. They must not use tobacco nor spirits of any kind.

10. They must be diligent in their studies, neither wasteful of their time nor careless of their opportunities.

11. They must not absent themselves from school at any time without being previously excused by the superintendent or principal, and in case of being excused by the superintendent, the superintendent shall so report to the principal.

12. They must not enter or loiter in the schoolhouse at any time out of school hours, unless detailed for work or expressly permitted.

13. All loitering, standing or talking in the halls on the way to or from school, or at recess, is prohibited.

14. They must enter in and retire from the dining room in an orderly manner and observe proper decorum while at their meals.

15. They will not be permitted in main building, dining room or kitchen during school hours, including recess, unless by the order of the principal or teacher.

16. They will not be permitted to be in the main hallway, nor occupy the front steps or veranda. Under no circumstances will they be allowed to use the center stairs to and from the third floor. Exceptions to this rule can only be made by the superintendent. The above does not prevent any pupil from coming to see the matron or superintendent, on business, at any time.

17. The industrial departments are not work shops, but schools, and all pupils attending same are governed, as far as applicable, by the same rules as govern pupils during school hours.

18. Boys are not permitted on girls' playground except going to or coming from industrial school buildings or barns.

19. They must give notice and strict obedience to all rules and regulations that may from time to time be issued by the superintendent.

## GOVERNING TEACHERS.

1. Teachers, except those on duty, shall be in their respective school-rooms to receive pupils at the beginning of each session at five minutes prior to 8 A. M. and 1 P. M.

2. At the beginning of each school period all absent pupils must be noted, and, unless positively known by the teacher to be ill or excused, such absence shall immediately be reported to the principal, with cause, and by him to the superintendent.

3. The teacher shall keep a record of attendance of his respective classes in a register furnished for that purpose.

4. All books and supplies for the use of pupils shall be drawn by the teacher of the class for which they are intended. No books nor supplies will be issued directly to pupils.

5. Teachers may dismiss or excuse pupils from school on account of illness or other sufficient cause, but such dismissal or excuse shall immediately be reported to the principal by such teachers, and the principal shall report same to the superintendent or nurse.

6. Corporal punishment is prohibited.

7. Serious misbehavior on the part of pupils must be reported immediately to the principal for his action thereon.

8. Teachers necessarily absent from school should notify the principal thereof as far in advance as practicable, and all absence of teachers shall be reported by the principal to the board.



9. The whole duty of teachers is not fulfilled by a routine imparting of instruction; they must, by example and personal influence, do all that within them lies to promote the physical, mental, and moral improvement of all pupils with whom they are brought in contact, and this in and out of school.

10. Teachers will assume duty in rotation, according to seniority of service.

11. The teachers on duty will preserve order in the chapel, and see that pupils proceed to and leave their respective schoolrooms in a prompt and orderly manner, and will have charge of children at recess. The male teacher on duty will act as principal in the absence of the principal.

12. It shall be the duty of teachers to give vigilant attention to the ventilation and temperature of the schoolrooms, and to make themselves familiar with the means by which their respective rooms may be properly ventilated. A regular system of ventilation shall be practiced at all times by which the air in all their schoolrooms shall be effectually changed at recess, and at such other times as may be necessary to prevent the breathing of impure air.

13. They shall at all times give their support to the officers of the institution by inculcating in the minds of their respective classes proper principles of good order and obedience; and they shall never intimate to them matters to the discredit of any officer in the institution.

14. Teachers shall not be allowed to employ their time outside of school hours in any manner which will interfere with their efficiency or usefulness as teachers in the institution.

15. Attendance upon teachers' meetings will not be made obligatory, but attendance will naturally indicate interest in their work; non-attendance, lack of interest.

16. Teachers shall have charge of such classes as may be assigned them by the principal. They shall be subject to his direction, and shall co-operate with him, not only during school hours, but before and after.

HENRY W. ROTHERT,  
*Superintendent.*