

FINANCIAL STATEMENT

RECAPITULATION

Of Librarian's Expenditures for the biennial period beginning July 1, 1924, and ending June 30, 1926

GENERAL DEPARTMENT

Books purchased	\$ 6,078.49
Periodicals purchased	2,207.80
Binding	1,722.25
Printing	80.41
Carriage	5.26
Miscellaneous Expense	586.19

Total

\$10,680.40

LAW AND LEGISLATIVE REFERENCE DEPARTMENT

Books purchased	\$ 9,832.40
Periodicals purchased	1,279.58
Binding	1,220.17
Printing	252.75
Carriage	20.36
Miscellaneous Expense	759.22

Total

\$13,364.48

MEDICAL DEPARTMENT

Books purchased	\$ 1,557.71
Periodicals purchased	2,039.53
Binding	1.25
Printing	142.88
Carriage	20.01
Miscellaneous Expense (including Travel expense)	734.47

Total

\$ 4,495.85

ECONOMICS AND SOCIOLOGY DEPARTMENT

Books purchased	\$ 1,575.04
Periodicals purchased	541.40
Binding	885.81
Printing	23.28
Carriage	1.94
Miscellaneous expense	63.20

Total

\$ 3,090.67

HISTORICAL DEPARTMENT

(From July 1, 1924 to July 1, 1925*)

Books and Periodicals	\$ 1,225.42
Newspapers	12.00
Portraiture	952.66
Maps and Manuscripts	1,053.17
Museum	658.47
Carriage	6.71
Printing and Binding	1,013.99
World War	199.75
Miscellaneous Expense	763.91
Archives	3.00

Total

\$ 5,889.08

*Beginning with July 1, 1925, the bookkeeping of the Historical Department was transferred from the State Librarian's bookkeeper to the Curator of the Historical Department.

State of Iowa

1926

THIRTEENTH REPORT

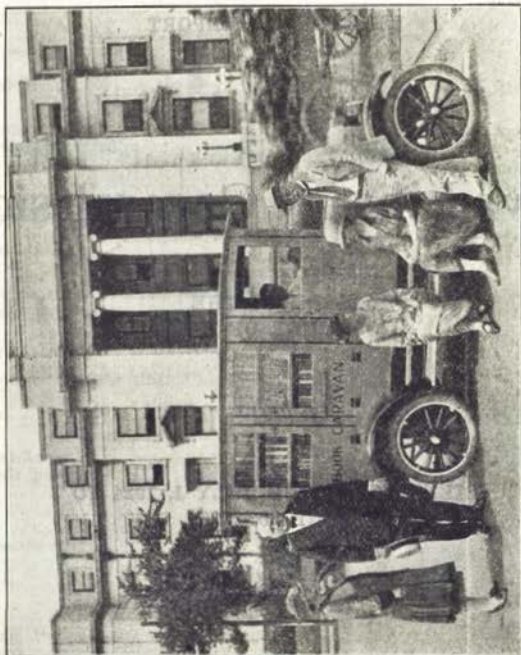
OF THE

Iowa Library Commission

MADE TO THE
GOVERNOR OF IOWA

FOR THE

BIENNIAL PERIOD JULY 1, 1924 TO
JUNE 30, 1926JULIA A. ROBINSON
SecretaryPublished by
THE STATE OF IOWA
Des Moines



Iowa Library Association Book Car

JULIA A. ROBINSON
Secretary

LETTER OF TRANSMITTAL

To HONORABLE JOHN HAMMILL, *Governor of Iowa*:

In compliance with Section 4539, Code of 1924, I herewith transmit the thirteenth report of the Iowa Library Commission for the biennial period, July 1, 1924, to June 30, 1926.

JULIA A. ROBINSON,
Secretary, Iowa Library Commission.

Des Moines, Iowa, November 1, 1926.

IOWA LIBRARY COMMISSION

MEMBERS EX-OFFICIIS

JOHNSON BRIGHAM, *State Librarian, Chairman.*
WALTER A. JESSUP, *President State University.*
MAY E. FRANCIS, *State Superintendent Public Instruction.*

MEMBERS APPOINTED BY THE GOVERNOR

MRS. WILLIAM D. SOUTHWICK, Boone.
W. R. ORCHARD, Council Bluffs.
MARTHA MCCLURE, Mount Pleasant.
A. M. DEYOE, Des Moines.

JULIA A. ROBINSON, *Secretary and Director of Library Extension.*
HEADQUARTERS: State Historical Building.

REPORT OF IOWA LIBRARY COMMISSION

MEMBERSHIP

Two changes in the membership of the Library Commission have taken place during the biennium.

Addison Parker, who was appointed to fill Mrs. Towner's unexpired term and reappointed in 1925, resigned in January, 1926. A. M. Deyoe was appointed to fill the vacancy. Mr. Deyoe as Superintendent of Public Instruction had been a member of the Library Commission ex-officio and is acquainted with the work and its needs.

Mrs. H. J. Howe died in March, 1926, and was succeeded by Martha McClure. Mrs. Howe was appointed to membership on the Library Commission in 1904 on resignation of Jessie Waite Davidson and successively reappointed as her terms expired. Her interest in library work was keen and intelligent, and the work of the Library Commission, which was especially dear to her, profited much from her connection with it. Her going is a loss to the Library Commission and to library interests in the state.

ACTIVITIES

Two activities are given by law to the Iowa Library Commission, (1) Extension and supervision and (2) the Traveling Library.

EXTENSION AND SUPERVISION

This work which is under the direct supervision of the Secretary, being the oversight of all the libraries of the state, covers help in beginnings, organization of libraries for efficient service including book selection and buying, advice in library building and equipment, in selection and employment of librarians and many details of library management. The subjects following all receive more or less of the Secretary's attention as part of the work of supervision.

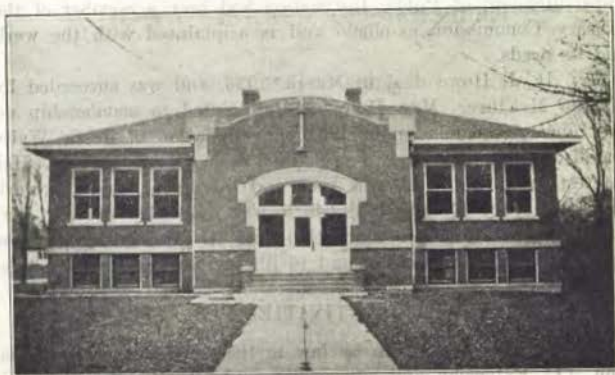
This help is given by correspondence and visits by the Secretary for inspection and conference with librarians and library boards. That they are helpful is the constant testimony of both.

Owing to insufficient help during the past two years in the

office she has been able to make far fewer visits than she should have done.

Library Beginnings. The removal of the election clause in the revision of the code, as a condition for securing tax support has made it possible for small towns to secure a small levy or appropriation and this has been done in towns too small to maintain a library even at the maximum and the levy is generally a very small one. This means a poorly supported and inefficient library without money to buy books or employ a competent librarian.

During the past two years nine libraries have been added to the number receiving tax support—most of them coming under



Woods Memorial Library Building at Sutherland

the class described above. In most cases this was done without the advice or without the knowledge of the Secretary of the Library Commission. The towns recently receiving tax support are Akron with a population of 1,224; Alton, 1,017; Grand Junction, 1,008; Greene, 1,299; Lake Mills, 1,588; Lake View, 886; Morning Sun, 847; Northwood, 1,499; Orange City, 1,620, and Sutherland, 823.

Two of these, Morning Sun in Louisa County and Northwood in Worth County, are in counties previously without any tax supported library. Three counties, Clayton, Union and Van Buren, are still without tax supported libraries.

Libraries in small places could be much more efficiently, satisfactorily and economically maintained as branches of a county

library and even now a number of towns are wisely becoming branches of larger libraries instead of seeking an independent tax. As examples may be mentioned Rockford as a branch of Charles City, Gilman of Marshalltown and Bettendorf of Davenport.

Organizing Help. In addition to the advisory aid in administration which is given to librarians and library boards by the Secretary there is much technical help needed in the installation of approved modern library methods and the making of a catalog, etc. This requires more time than the Secretary can give on her visits which must necessarily be brief. Technical help is needed by libraries in their beginning, also where untrained help has been employed and the organization has lapsed.

Few school libraries of the state are well arranged, classified or cataloged and few have trained librarians competent to do this work. Therefore many requests for help in organization of school libraries come to the Library Commission office. This the Library Commission is glad to give when there is sufficient help in the office to do it.

Association Libraries. A library governed by an association and supported by membership dues, entertainments, donations, etc., has been the usual method for library beginnings and is still used, twenty-one associations having been organized during the past two years at the following places: Arlington, Bellevue, Donnellson, George, Gilmore City, Guthrie Center, Harris, Manly, Murray, Oakville, Oxford Junction, Prairie City, Preston, St. Charles, Schaller, Sidney, Sioux Center, Stratford, Titonka, Volga and Walnut. Eight association libraries already enumerated have become tax supported. A number have ceased to function.

In some places the use of the library is restricted to those holding memberships only, in others the library is made free to all. A room and furniture is often donated and the service is voluntary. Loans from the Traveling Library supplement the book collections from purchase and donations.

COUNTY LIBRARIES

Believing that through county libraries must come the solution of a statewide supply of books the Secretary is now giving much attention to the promotion of county library interest through the various channels through which it may be fostered.

This interest and library interest in general have received an impetus from the travels of the Iowa Book Car during the summer of 1926.



New Capitol Hill Branch Building, Des Moines Public Library

By reason of the Regional meeting at Sioux City in 1925 and the generosity of the State University of Iowa in connection with the Iowa City meeting in 1926 the Iowa Library Association found itself with a surplus in the treasury. At Sioux City \$300 of this was voted for the promotion of county library work and an addition was made later by action of the districts at the spring meetings in 1926.

This was invested in a Book Car by the County Library Committee consisting of Lydia Margaret Barrette of Mason City, Callie Wieder of Waterloo and Mary E. McCoy of Indianola.

The expense for gasoline and repairs was met by the libraries using the car for visits to county and other fairs and for travel along the country roads where stops were made at the farm homes to explain the value of a county library and the use of a book car.

Visits varying from one day to a week will be made before the end of October in Warren, Story, Cerro Gordo, Monona, Pottawattamie, Black Hawk, Howard, Scott, Webster, Hardin, Marshall, Worth, Polk and Franklin counties.

Follow up methods will carry on the work thus begun.

TOWNSHIP EXTENSION

The extension of library privileges to townships, school corporations and small towns is given by the following libraries on the payment of a small levy or appropriation within the limit of one mill allowed by the law. The number of small towns receiving such service has materially increased during the past two years but this is almost wholly missionary or publicity work as the amount received scarcely covers the cost of the service.

But it is a much better method of supplying the book needs of small towns than an independent library which is often poorly supported and inefficiently managed.

It is also a step toward county library service and the towns now contracting for rural extension service will come into a county library system without further contracts.

In the case of townships, with the exception of Clarinda and Onawa, no stations are maintained but in all towns having extension there are branches from the main library.

	Township	Towns	Mill Levy	Amount
Alden	1	..	.4	\$ 345
Cedar Rapids	..	1	..	222
Charles City	..	1	..	175
Clarinda	3	1	.25	493
Cresco	3	..	.5	786
Davenport	1	1	..	800
Dunlap	1	..	1	566
Eldon	1	400
Fort Dodge	1	250
Garner	1	..	.2	38
Grinnell	1	..	.25	130
Grundy Center	1	117
Logan	1	197
Marshalltown	..	1	.5	..
Montezuma	1	300
Onawa	1,190
Sac City	1	..	1	567
Sibley	1	629
Tipton	1	..	.5	322
Traer	2	392
Winterset	1	..	1	..
Woodbine	1	..	1	510

LIBRARY EFFICIENCY

As a library is ranked not by the number of books on its shelves but by the service which it renders to its community in the supply of books for reading and in the help given through its reference work to schools, women's clubs and all who wish information of any kind, a basis for computing this efficiency has been sought.

The reference work is very difficult to count as the number of questions answered gives no satisfactory measure of the work done.

Neither is the record of the number of readers holding library cards conclusive as it is a difficult matter to keep this record up to date and free from dead timber.

The number of books loaned has been accepted as the most satisfactory basis of comparison between libraries and between different periods for the same library, especially if computed per capita on the town's population. As the per capita increases as the population decreases a much smaller per capita for a large library may show equally or more efficient work.

In previous reports a table arranged by population has been included showing the per capita circulation from the various libraries. The table is omitted from this report as the change in date of report has caused a confusion in the periods covered making a fair comparison between libraries impossible.

INCOME

The amount available for the support of a library naturally governs the efficiency of a library as on it depends the book supply and the competency of a librarian which may be employed.

The American Library Association has decided, after much careful investigation, that \$1.00 per capita is only a reasonable income for any library and experience has shown that amount to be far below an adequate figure for the smaller libraries. A per capita table of incomes is omitted for the same reason which excludes a table of per capita circulation.

The amount of tax levy appears in the statistics printed at the end of this report. An increase in the number of libraries receiving the maximum of five mills or approximately that levy is noticeable and satisfactory as it indicates more nearly adequate maintenance and a growing recognition by the councils of the value of the libraries.

Inasmuch as the levy in some cases is made on one-half or full valuation it raises the rate higher than appears in such cases.

LIBRARY BUILDINGS

A new library building at the State College, Ames, was dedicated on January 21, 1926. The building is planned to meet modern library needs and adds greatly to the efficiency of the college library.

In Des Moines a building specially planned for library use has been built for the Capitol Hill Branch of the public library.

The town of Dumont has received a gift of a \$5,000 library building from Mr. George Brown, a public spirited citizen, a condition being that the town should raise \$1,000 for books, which was done.

An addition to the library building at Mt. Pleasant was made possible by a bond issue of \$8,000 and at Sioux City a bond issue of \$80,000 was voted for the erection of much needed branch buildings.

At St. Ansgar the bequest of Mrs. Karen Nissen has made possible a \$5,000 library building which is just completed.

At Sutherland the bequest of Mrs. Roma Woods for a library building was recently made available and a remodeled school building making an attractive library building stands as a memorial to Mr. and Mrs. Woods.

SCHOOL LIBRARIES

The number of school libraries in the state is not known, no office being charged with collection of such statistics.

Approximately adequate libraries exist in the high schools at least of the larger towns, a few administered by trained librarians. In other schools they are in charge of a teacher-librarian without either library training or experience, hence their usefulness is reduced. In consolidated and rural schools the situation is even less satisfactory.

Many high school and college libraries are not organized and constant requests come to the Library Commission for help in organizing and cataloging to which the Library Commission is glad to respond when there is an assistant to do the work. But a continued vacancy in that position due to low salary has prevented the help being given.

The addition of a School Library Supervisor to the Library Commission staff would add greatly to the efficiency of the school libraries of the state.

LIBRARY MEETINGS

Iowa Library Association. In 1925 the Iowa Library Association joined with Minnesota, Missouri, Nebraska, and North and South Dakota in holding a Regional Meeting at Sioux City. The attendance was 396 of which 202 were registered from Iowa. A most excellent program was given by librarians of the states participat-

ing, representatives of the American Library Association and other speakers.

In 1926 the annual meeting was held in Iowa City in July to avoid conflict with the Fiftieth Anniversary of the A. L. A. to be held in October. The attendance of 253 was the largest in the history of the association. The cooperation of the University in speakers and arrangements for the pleasure of the librarians rendered the meeting a helpful and enjoyable one.

District Meetings. Eight district meetings of the Iowa Library



Interior New Capitol Hill Branch, Des Moines Public Library

Association in cooperation with the Library Commission were held in 1925 and 1926 each.

These meetings were attended by the Secretary of the Library Commission and the President or Vice President of the Iowa Library Association. This gives the Secretary the opportunity to come in close touch with librarians and trustees in discussion of their problems.

To librarians it furnishes informal conferences with each other and the discussion of questions, often crowded out at the larger meetings, takes the place of formal papers. Book talks always form a feature of the program and helpful buying lists are distributed.

American Library Association. Meetings of the American Library Association were held at Saratoga Springs in 1924 and at Seattle in 1925. The 1926 meeting will celebrate the Fiftieth Anniversary of the American Library Association and will be held in October, the month of its organization. The Saratoga Springs meeting was attended by Mr. Brigham and Miss Robinson, the Seattle meeting by Mr. Brigham only.

A Librarian's Conference was held by the Extension Department of the State University in 1925 in connection with the Summer School but was omitted in 1926, the Iowa Library Association meeting taking the place of the usual conference.

State Teachers Association. Meetings of the Library Section of the State Teachers Association are held regularly in connection with the meeting of this association. While the attendance is not large the interest is good and the program helpful. In this meeting of the Secretary of the Library Commission always cooperates with the school librarians.

IOWA LIBRARY SUMMER SCHOOL

Courses in library economy are conducted each year as a part of the summer session of the State University of Iowa, credits being given for courses in cataloging, classification, book selection, reference, children's work, library administration and minor subjects.

These courses are not a substitute for the training which may be secured at the regular library schools, but by furnishing principles and opportunity for practice under trained librarians, give the instruction which enables librarians to better administer the smaller libraries unable to afford fully trained librarians, and to fill subordinate positions in the larger ones.

The course in library administration is given by the Secretary of the Library Commission and the Library Commission further cooperates in the loan of books from the Traveling Library for practice work.

SUPERVISING LIBRARIAN OF STATE INSTITUTIONS

This position became vacant in 1925 by the resignation of Julia Stockett. No successor has been appointed and the libraries in the state institutions are suffering in book selection and supplies and efficiency.

STATE FAIR EXHIBIT

In 1925 the Library Commission was deprived of the basement room which had been used for exhibition purposes for ten years and a small space in the corridor of the second floor of the Women and Children's Building assigned. As attractive an exhibit as possible was made but the location is much less valuable for publicity, the space is too small for an adequate exhibit and does not furnish the reading facilities so much appreciated by the children of the campers.

CHILDREN'S BOOK WEEK

The observance of Children's Book Week in the interest of better books in the home and therefore better reading for children is now an annual event in many towns where it is sponsored by libraries, women's clubs, parent-teachers associations, schools and others.

Suggestions and outlines for programs, posters, book lists, book plays and book exhibits are loaned by the Library Commission to assist in this observance.

PUBLICATIONS

Iowa Library Quarterly. A change has been made in the mailing of the *Quarterly* and at present it is sent only to the librarian, the president and secretary of each public library and to such other trustees as request it. Each association and college library receives a copy and additional copies are mailed where requested.

Booklists. Lists for the first and second, the third, the fourth, and the fifth and sixth grades have been revised and reissued. A revision of the Junior and Senior High School lists was planned but not carried out, but a supply of the 1923 lists is still available. These lists are free to schools as well as libraries.

Statistics and Blanks. Forms for collection of statistics from the libraries of the state are furnished free from the commission office, also blanks for keeping daily and monthly statistics from which the annual report may be compiled. Blanks for use of the libraries in making their annual budget and in certifying to the city council their tax levy for the coming year are also furnished.

Leaflets and Forms. Leaflets explanatory of the work of the Library Commission and of the Traveling Library and other blanks and forms necessary for keeping records are prepared and printed as needed. No new leaflets have been issued but revisions of several already in existence have been made.

LIBRARY HELPS

To assist in the better selection of books and greater economy in book buying the *A. L. A. Booklist* is furnished free to the smaller libraries unable to afford the subscription price.

Library and other helpful lists and publications of the American Library Association and the larger libraries are purchased in quantities by the Library Commission and furnished to the libraries of the state.

Collections of the various editions of standard books, and of beautiful copies are maintained by the Library Commission for loaning to libraries, women's clubs, parent-teachers associations, schools and other organizations for exhibit purposes to encourage reading and purchase of better books than the stores often afford.

TRAVELING LIBRARY

The second activity of the Library Commission is the Traveling Library from which books are loaned to the people of the state without library facilities or who are unable to secure from their local libraries the books they need or desire.

The Traveling Library at the present time has approximately 70,000 books, 15,000 of which are in fixed groups of fifty volumes each for general reading by adults and children. The balance are in an open shelf collection from which selections are made to meet specific requests. These requests come from clubs and other organizations, churches, schools and individual borrowers.

The requests from the women's clubs are of two kinds, (1) for the preparation of their programs to be described later and (2) for reloaning as community libraries. Many of the tax supported libraries in the state made their beginnings in this way and a number of libraries classed as association libraries are still sponsored by clubs.

As elsewhere stated the school libraries of the state are far from adequate both for school use and for recreational reading. As a consequence the demands upon the Traveling Library from schools are very heavy, so heavy and the supply in the Traveling Library so inadequate that the full list requested is seldom filled, and these requests come from country schools and towns without library facilities.

The number of individual borrowers is constantly on the increase. Some of the requests from individuals are for reading for cultural and recreational purposes, some for carrying on ex-



New Library Building at Iowa State College

tension and other courses of study. In towns with libraries, only such books are loaned as cannot be procured from the public library and the loan is made through the public library to avoid duplication.

To individuals and for books much in demand the period of loan is four weeks only, where books are to be used by groups in schools or communities they are loaned for three months. There is little loss either of books or postage.

Books for the Blind. The Traveling Library collection of books for the blind now numbers 2,771 divided between New York Point and Revised Braille. The addition of books for the blind during the past two years number 765 and 1,890 were loaned, a gain of more than fifty percent. More could be done if the assistant had more time to give to this collection.

Picture Collections. A beautiful picture collection consisting of reproductions of the work of children in Prof. Cizek's classes in the Vienna School of Arts and Crafts has been added to the Traveling Library picture collections.

A number of new subjects have also been added to the collection of stereoscopic views. Loans of pictures and stereoscopic views could be much increased with sufficient help to give it more specific attention.

REFERENCE WORK

Most of the requests received by the Traveling Library from women's clubs are for material for preparing papers. These requests are generally by subject thus, requiring a large amount of research work to find in a book, chapter of a book, magazine article, pamphlet or clipping the satisfactory material to fill the need.

This work is constantly increasing and in the busy season of the winter is beyond the ability of one person to keep it up to date.

Study Club Outlines. Not only do clubs depend on the Traveling Library for material for carrying out their programs but for outlines and syllabi to assist in arranging them.

For this purpose the Traveling Library maintains a collection of outlines on the various subjects called for by the clubs and new ones are added as they can be procured.

Debate Material. A list of the references to be used each year by the High School Debate League is prepared by the Reference Librarian and the material duplicated to meet as nearly as possible the heavy demand. Many requests also come to the reference department for help in debates on other subjects.

GROWTH AND PUBLICITY

The Library Commission is sometimes criticized because there are schools, clubs and people in the state who do not know of the opportunity they may have to borrow books from the Traveling Library.

The only reply to be made to this is that with the present appropriation and present help the limit of supply has been practically reached and only such growth in the work as comes without effort is possible. Therefore no attempt is made to give publicity to the Commission work or to secure borrowers for the Traveling Library.

OFFICE STAFF

The work of the Library Commission in supervision, extension and organizing, and in the work of the Traveling Library in the selection, cataloging and loaning of books, reference work, keeping records, shipping and receiving books and shelving them on their

return, requires both people with technical training in library methods and clerks and stenographers.

The staff as provided by the Forty-first General Assembly consists of a *Secretary* with library school training, an experience of thirteen years with the Iowa Library Commission as well as with two commissions preceding her coming to the Iowa work.

She has supervision of the entire work of the Library Commission in all its activities but especially the supervision of the libraries of the state, help in beginnings and organization, cooperation with the Iowa Library Association in its meetings and with the State University in the work of the Summer School, representing library interests with other organizations, and many minor duties.

To the *Librarian of the Traveling Library* belongs the work of filling all requests for books except those requiring research work.

This includes the selection from the shelves of the titles to meet the desires or needs of each borrower as expressed in the letters coming to the office, as well as the supervision of the shipping of the books. An acquaintance with books and with library technique is necessary, therefore library training and experience are essential qualifications for this position.

Gertrude Davis after a year's service with the Library Commission will leave in August and the vacancy will be filled by Grace Murphy, a graduate of the St. Louis Library School and with experience in the Davenport Public Library.

Reference Librarian. As outlined in the reference work, it is necessary that this assistant shall have an acquaintance with books and of catalogs and indexes as well as magazines and pamphlets and know how to make available all possible material in supplying the needs of the club women.

Clara L. Abernethy who has held the position of Reference Librarian for five years is prepared for it by college and library school training, knows the Traveling Library books and is painstaking and conscientious and can command a larger salary elsewhere and the Library Commission is in constant danger of losing her unless the salary for that position is more nearly adequate for the work required.

The *Cataloger* must also be a library school graduate as her work includes the cataloging of the additions to the Traveling Library and installing catalogs and modern methods in public and school libraries of the state.

This position has been vacant for more than a year because the salary allowed is not sufficient to attract a librarian competent to

do the work. Again and again when it seemed that a person had been secured a higher salary elsewhere proved too tempting.

Three clerks are allowed at the present time, a *Record Clerk* whose duty is to keep a record of the books loaned from the Traveling Library and to check them on their return, also to send notices for overdues and books not returned. Grace Ryan has held this position for over four years. Previous to that time she served as General Assistant for about two years.

A *General Assistant* does the routine work in connection with the Traveling Library such as checking bills, and books purchased, entering them on the accession record, making cards and pockets, mending, preparing books for binding and for use on their return, checking the magazines as they are received and attending to a multitude of other details. This assistant also has charge of the circulation of the books for the blind which has increased more than fifty percent during the past two years. Mrs. Helen Keogh Shepard who has done this work faithfully and competently for four years took the library course at Iowa City in 1926 thus making her more efficient in the Commission work.

The *Janitor* is classed as a clerk and in addition to the usual janitor work assists in shelving books and in shipping.

Two high school boys work half time each as *Shipping Clerks* for sending out books.

Two *Stenographers* are also employed, one for the correspondence of the Secretary, the other for the Traveling Library. The Secretary's Stenographer also prepares the bills and does the bookkeeping for the Library Commission. Elsie Riley, the Secretary's Stenographer has been with the Library Commission for four years. Two Traveling Library Stenographers have married during the past two years, Lurene Stevenson and Hattie Blank. Lurene Stevenson as Mrs. Carl Jaeger has returned to the Traveling Library work.

TRAVELING LIBRARY SUMMARY

June 30, 1924—July 1, 1926

Books added to the Traveling Library.....	7,415	
Total number of books in Traveling Library June 30, 1926.....	69,097	
Books loaned from Traveling Library.....	131,018	
Requests filled by Traveling Library.....	10,041	
Books for blind added to Traveling Library		
Braille.....	219	
New York Point.....	40	259
Total number books for blind in Traveling Library		
Braille.....	360	
New York Point.....	401	761

Books for blind loaned from Traveling Library.....	1,890
Traveling Library Stations	
Additions	765
Total	2,771
Picture collections, posters and stereoscopic views loaned.....	243
Number volumes loaned to schools and colleges.....	58,350
Number volumes loaned to study clubs and other organizations .	35,388
Number volumes loaned to individuals.....	15,423

DETAILED STATEMENT

The total annual appropriation for the work of the Library Commission is \$9,250. This covers all the activities of the Library Commission, Traveling Library, extension, traveling expenses, etc. Inasmuch as the law provides that all accounts and expenditures must be audited by the State Executive Council, the detailed statement of expenditures is given in the printed records of the council.

LEGISLATION

The only general library legislation enacted by the Forty-first General Assembly was the bill making the end of the library year and the time of the annual report from public libraries coincide with that of other city departments on March 31st.

A change in the county library law by the addition of the words "having public libraries" thus exempting only towns with public libraries from the application of the county library law is probably the only general library legislation which will be sought from the Forty-second General Assembly.

LIBRARY COMMISSION NEEDS

The needs of the Library Commission which can be met by the legislature are first, *financial*. This will be partially met by restoration of the appropriation to \$12,000 from which it was cut by the Forty-first General Assembly.

This would allow the purchase of more books and give a larger travel fund to be used by the Secretary for visits to libraries for conferences with library boards so desirable in promoting the efficiency of the libraries; also in visits of the Organizer to give technical assistance in the installation of modern methods requiring more time than the Secretary is able to give in her visits.

The second need is *more office help* and this is as great as the financial need as neither Secretary nor Organizer can now spend the needed time in the field because of office work and because it is useless to buy books unless they can be sent where needed and

when needed and the present force is inadequate for this in the busy season.

A *General Library Assistant* competent to give assistance in filling orders and dividing with an apprentice the work of the present untrained General Assistant would give the Organizer more time for work in the libraries of the state and make for more prompt filling of Traveling Library orders.

A *full time Shipping Clerk* instead of two half-time high school boys would serve to expedite the work of getting the books out which in the busy season is often delayed.

These changes are requested and will add but \$920 to the present salary pay roll.

The requests for increased salaries are warranted by the responsibility of the positions and the salaries competent librarians needed for these positions can command elsewhere. For this reason there has constantly been difficulty in filling the positions in the past greatly hampering the work with which the Library Commission is charged by law.

Some of the clerical help has served the office for a number of years and are deserving of the slight increase requested.

The \$2,250 requested restored to the maintenance, the \$920 for increased help noted above and the \$1,180 for increased salaries gives a total increase of \$4,350 only, a small amount for the really great educational work which the Library Commission is doing.

GIFTS TO IOWA LIBRARIES

Cedar Rapids. Coe College. \$5,000 a year for five years from The Carnegie Corporation for library development.

Dumont. \$5,000 from George H. Brown for a library building.

Hawarden. \$1,500 from trustees of the disbanded Order of Good Templars.

Mt. Pleasant. Public Library. Books from the private Library of W. D. Worthington valued at more than \$1,000 from Mrs. Worthington.

Mt. Pleasant. Iowa Wesleyan College. \$100,000 from the P. E. O. Sisterhood for the erection of a memorial library building.

Oxford Junction. Bequest for a library made twenty years ago just available by the sale of farm property.

Peterson. Proceeds from sale of a 200 acre farm as a gift for a library building by the will of Mrs. Lena French.

St. Ansgar. \$5,000 for a building and \$1,000 for books by the will of Mrs. Karen Nissen, a former resident.

FREE PUBLIC LIBRARIES ARRANGED BY COUNTIES

Adair	Greenfield
Adams	Corning
Allamakee	Waukon
Appanoose	Centerville
Audubon	Audubon
Benton	Vinton
Black Hawk	Cedar Falls, Waterloo
Boone	Boone
Bremer	Waverly
Buchanan	Independence
Buena Vista	Alta, Storm Lake
Butler	Greene, Parkersburg
Calhoun	Lake City, Rockwell City
Carroll	Carroll, Coon Rapids
Cass	Atlantic
Cedar	Tipton, West Branch
Cerro Gordo	Clear Lake, Mason City
Cherokee	Cherokee
Chicasaw	Nashua, New Hampton
Clarke	Osceola
Clay	Spencer
Clayton	None
Clinton	Clinton, De Witt
Crawford	Denison
Dallas	Adel, Perry
Davis	Bloomfield
Decatur	Leon
Delaware	Manchester
Des Moines	Burlington, Mediapolis
Dickinson	Arnolds Park, Spirit Lake
Dubuque	Dubuque
Emmet	Estherville
Fayette	Hawkeye, Oelwein
Floyd	Charles City
Franklin	Hampton
Fremont	Hamburg
Greene	Grand Junction, Jefferson, Paton
Grundy	Grundy Center, Reinbeck
Guthrie	Stuart
Hamilton	Webster City
Hancock	Britt, Garner
Hardin	Alden, Eldora, Iowa Falls
Harrison	Dunlap, Logan, Missouri Valley, Woodbine
Henry	Mount Pleasant
Howard	Cresco
Humboldt	Humboldt
Ida	Arthur, Galva, Ida Grove
Iowa	Marengo
Jackson	Maquoketa
Jasper	Colfax, Newton
Jefferson	Fairfield
Johnson	Iowa City
Jones	Anamosa, Monticello
Keokuk	Sigourney
Kossuth	Algona
Lee	Fort Madison, Keokuk
Linn	Cedar Rapids, Central City, Marion
Louisa	Morning Sun
Lucas	Chariton
Lyon	Rock Rapids

Madison	Winterset
Mahaska	Oskaloosa
Marion	Knoxville, Pella
Marshall	Marshalltown
Mills	Glenwood, Malvern
Mitchell	Osage
Monona	Onawa, Whiting
Monroe	Albia
Montgomery	Red Oak, Villisca
Muscatine	Muscatine, West Liberty
O'Brien	Paullina, Pringhar, Sanborn, Sheldon, Sutherland
Osceola	Sibley
Page	Clarinda, Shenandoah
Palo Alto	Emmetsburg
Plymouth	Akron, LeMars
Pocahontas	Laurens
Polk	Des Moines
Pottawattamie	Council Bluffs
Poweshiek	Grinnell, Montezuma
Ringgold	Mount Ayr
Sac	Lake View, Odebolt, Sac City
Scott	Davenport
Shelby	Harlan
Sioux	Alton, Hawarden, Orange City
Story	Ames, Maxwell, Nevada
Tama	Tama, Toledo, Traer
Taylor	Bedford
Union	None
Van Buren	Eddyville, Eldon, Ottumwa
Wapello	Indianola
Warren	Washington, Wellman
Washington	Corydon, Humeston
Wayne	Callender, Fort Dodge
Webster	Forest City, Lake Mills
Winnebago	Decorah
Winneshiek	Sloux City
Woodbury	Northwood
Worth	Belmond, Clarion, Eagle Grove
Wright	

GENERAL SUMMARY

New tax supported libraries	9
Total tax supported libraries	153
Endowed libraries	2
New association libraries	19
Total association libraries	91
New library buildings	4
Libraries not reporting	
Tax supported	5
Association	15
Total	20
Total number volumes in tax supported libraries	1,764,356
Total circulation from tax supported libraries	7,101,334
Population of state having access to libraries	
Tax supported	912,054
Association	93,281
Total	1,005,335
Population of state	2,419,927

GENERAL STATISTICS FOR IOWA LIBRARIES—FREE PUBLIC LIBRARIES
April 1, 1925—March 31, 1926

Number	Place	Librarian	Building		Books			Borrowers					
			Donor	Year erected	Cost	Total number Volumes	Volumes added in 1925	Volumes loaned in 1925	City	Country	Hours open	Branches or stations	
1	Adel	Pearl De Reus				1,951	176	6,721				15	
2	Akron	A. L. MacMillan											
3	Albia	Mrs. L. M. Duncan											
4	Alden	Mrs. Kittie Catlin	Carnegie	1908	10,000	7,538	605	31,055	3,008		77	36	
5	Algona	Mrs. Lura Sanders	Carnegie	1904	10,000	3,403	188	5,348	4,007		178	30	
6	Alton	Grace Olmoms	City Hall			2,516	239	21,834	1,006		6	33	
7	Ames	Elizabeth V. Pitts				2,550	359	9,567			45	16	
8	Anamosa	Grace Hill	Carnegie	1904	16,000	14,188	118	47,367	3,060		55	75	1
9	Arnolds Park	(Mrs. Morton Gardner)	D. A. R.	1903	12,000	7,227	227	22,358	2,000		15	30	
10	Arthur	(Faye McGonigle, Sec'y)											
11	Atlantic	Gertrude Barnard				399	85					1	
12	Audubon	Mrs. Gertrude Nelson	Carnegie	1903	12,500	8,252		2,301	1,120		65	42	
13	Bedford	Mrs. C. F. Beall	Carnegie	1912	10,000	7,282	302	24,827				33	
14	Belmond	Mrs. J. E. Wallace	Carnegie	1916	10,000	4,353	446	2,608	1,411		19	30	
15	Bloomfield	Mrs. Mary H. Hinkle	Carnegie	1913	10,000	5,182	163	12,008				31	
16	Boone	Bessie Moffatt	Erison	1901	30,000	21,537	1,003	49,487	1,004		12	42	
17	Britt	Ada Chaplin	Carnegie	1918	8,000	3,530	309	16,363	6,237		47	68	
18	Burlington	Mrs. C. P. Millard	P. M. Crapo	1888	60,000	46,983		196,587	601		91	82	
19	Calender	(Geo. W. Knutson)									72	14	
20	Carroll	Sadie Stevens	Carnegie	1905	10,000	6,843	300	17,258	1,188		10	47	
21	Cedar Rapids	Mary O. Stuart	Carnegie	1903	15,000	13,634	725	45,982	3,346		75	57	
22	Cedar Rapids	F. Jonas Hasey	Carnegie	1905	75,000	58,328	2,774	346,391	17,860				12
23	Centerville	Mrs. Lillian Hays	Carnegie	1903	39,000	10,180	549	41,373	1,830			34	
24	Central City	Mrs. Bertha Reed	Clegg	1917	2,000	7,454	219	30,622	4,237			99	36
25	Chariton	Mrs. Ida R. Leonard	Carnegie	1904	11,000	3,571	53	5,700	192		47	14	
26	Charles City		Carnegie	1904	12,500	14,561	740	36,716				37	1
27	Cherokee	Bessie Fensler	Carnegie	1905	12,000	11,183	606	3,324	2,074		15	39	
28	Clarinda	Harriet Foster	Carnegie	1909	15,000	15,304	463	41,825	8,150		49	3	
29	Clarion	Mrs. B. B. Birdsall	Evarts	1907	20,000	6,786	171	21,632	1,345		75	80	
30	Clear Lake	Mrs. M. J. Bowman	Carnegie	1917	10,000	6,857	384	29,431	1,492		138	48	
31													
32	Clinton	Mary A. Egan	Carnegie	1904	45,000	32,508	1,652	174,041	7,095		13	75	25
33	Colfax	Josephine Logsdon	Carnegie	1913	6,500	5,276	289	12,320	943		32	30	
34	Coon Rapids	Mrs. M. Schlotterback				2,727	272	10,357				9	
35	Cornieg	Idelle Riddle	Rawson	1900	3,000	7,361	212	13,889	1,832		21		
36	Corydon	Gertrude Rew	Carnegie	1919	8,000	4,177	184	19,397	905		32	21	
37	Council Bluffs	Eva T. Canon	Carnegie	1905	70,000	39,184		304,259	12,517		42	76	16
38	Cresco	Abbie Converse	Carnegie	1911	17,500	9,301	1,225	35,315	1,995		80	41	1
39	Davenport	Grace Gellenberger	Carnegie	1904	270,000	96,673	3,994	687,370	19,435			70	16
40	Decorah	Katherine Jewell	Carnegie	1922	9,000	3,968	252	2,986	1,721		200	40	
41	Denison	Margaret Hunt	Carnegie	1904	12,500								
42	Des Moines	Grace D. Ross	City Tax	1904	350,000	192,831	11,543	901,279	47,683		81	76	82
43	De Witt	Fislie F. Saxton	Carnegie	1908	6,500	3,068	55	8,975	596		38	29	
44	Dubuque	May M. Clark	Carnegie	1922	100,000	47,633	1,092	256,439	13,470		32	75	34
45	Dunlap	Mrs. B. K. Manchester	Carnegie	1912	10,000	4,892	130	13,571				25	
46	Eagle Grove	Mrs. A. Lukensmeyer	Carnegie	1903	10,000	4,965	167	25,233	1,677		9	30	
47	Eddyville	Mrs. Edith Bruggen	City Hall			2,908	180	4,802	342		153	6	
48	Eldon	Reva Hughes	Carnegie	1913	7,500	4,981	127	11,709	771		133	33	
49	Edora	Glady Peterson	Carnegie	1923	10,000	9,490	68	2,783	1,550		19	69	
50	Emmetsburg	Mrs. Lillian Appleby	Carnegie	1912	10,000	6,566	849	21,468	1,501		123	30	
51	Etherville	Luzelo Peterson	Carnegie	1903	10,000	11,303	933	39,700	2,170		213	42	
52	Fairfield	Emma L. Kirk	Carnegie	1893	40,000	21,631	1,150	33,112	3,159			48	
53	Forest City	Dr. Blanche Nell	City Tax	1890	2,000	4,391	401	12,977				72	11
54	Fort Dodge	Isabella Hopper	Carnegie	1904	30,000	27,868	1,371	186,004				54	7
55	Fort Madison	Rebecca Hesser	Cattermole	1895	25,000	12,646	265	52,373	3,121			54	
56	Galva	Mrs. Laura Byrge				3,427	127	4,789	300		9	30	
57	Garner	Mrs. F. M. Spayde	Carnegie	1915	6,500	4,275	156	15,786				30	
58	Glenwood	Emma L. Hanna	Carnegie	1907	7,500	5,342	220	17,317	1,067		58	30	
59	Grand Junction	Georgia Dawson				887		3,466				49	
60	Greene	Delphia Wilder				2,779	290	7,211	225		84	8	
61	Greenfield	Isabel Sider	Carnegie	1914	7,900	4,837	230	16,576	1,217		23	27	
62	Grinnell	Mrs. E. S. Bray	Stewart	1901	15,000	17,172	838	45,592	2,672		165	72	
63	Grundy Center	Mrs. W. R. Halden	Carnegie	1902	9,000	6,555	444	2,648	1,018		250	30	
64	Hamburg	Mrs. Ruth Holmes	Carnegie	1918	9,000	4,340	505	18,432	1,312		51	36	
65	Hampton	Mary E. Kingsbury	Carnegie	1903	11,000	8,478	570	35,900	1,317		69	45	
66	Harlan	Mrs. Minnie Brazley	H. H. Paup	1924	24,000	4,934	26	28,743	1,515		405	31	
67	Hawarden	Elsie Macomber	Carnegie	1903	5,000	3,810	119	9,371	1,068		11	30	
68	Hawkeye	Mrs. Lillian Parker											
69	Humboldt	Nellie F. Pinney	Carnegie	1909	10,000	6,123	141	24,437	1,456		59	30	
70	Humeston	Mrs. Ruth O. Cullmsee				1,771	86	4,332	592		29	29	
71	Ida Grove	Mrs. Frank Reed				2,920	312	6,836					
72	Independence	Neva M. Tabor	Munson	1894	15,000	9,265	198	25,172	1,390		81	33	
73	Indianola	Mary E. McCoy	Carnegie	1904	12,000	12,885	680	43,623	2,320				
74	Iowa City	Mrs. Jessie B. Gordon	Carnegie	1904	35,900	25,628	1,707	119,565	4,110		41	75	
75	Iowa Falls	Mrs. Vivian K. Ellis	Carnegie	1905	18,000	6,378	310	26,867	1,356		280	55	
76	Jefferson	Nellie Hopper	Carnegie	1914	10,000	7,133	378	17,544	889		54	28	
77	Keokuk	Nannie P. Fulton	Carnegie	1883	30,000	33,433	1,333	136,385	5,555		7	60	0
78	Knockville	Ruth E. Browne	Carnegie	1913	10,000	7,438	244	25,763	1,603		77	25	
79	Lake City	Bianche I. Hackett	Carnegie	1910	7,500	4,721	264	16,549	913		86	16	

IOWA LIBRARY COMMISSION

LIBRARY STATISTICS

GENERAL STATISTICS FOR IOWA LIBRARIES—FREE PUBLIC LIBRARIES—Continued

April 1, 1925—March 31, 1926

Number	Place	Librarian	Building		Books			Borrowers					
			Donor	Year erected	Cost	Total number volumes	Volumes added in 1925	Volumes added in 1924	City	Country	Hours open	Branches or stations	
*80	Lake Mills	(Mrs. O. J. Sheldon)											
*81	Lake View	Doris Mann											
82	Laurens	Mrs. E. G. Coffin	Carnegie										
83	LeMars	Ada Richards	Carnegie	1904	5,800	1,866	663	6,507		2,361		11	
84	Leon	Mrs. Sada F. Stout	Carnegie	1903	6,000	5,135	306	34,135		12,988		48	
85	Logan	Mrs. Alice T. Kockley	Carnegie	1920	10,000	5,135	306	12,988		1,919		27	
86	Malvern	Winifred McLeod	Carnegie	1920	10,000	4,563	47	6,758				8	
87	Manchester	Margaret Lindsay	Carnegie	1917	8,000	3,946	194	8,800		614	938	30	
88	Maquoketa	Helen M. Morse	Carnegie	1923	10,000	11,959	823	29,831		1,933	1,077	58	
89	Marengo	Ruth Boon	Carnegie	1925	12,500	11,246	302	25,007		3,807	47	42	
90	Marion	Lenna Huffman	Carnegie	1904	11,000	5,488	43	11,094		377	23	30	
91	Marshalltown	Albee Story	Carnegie	1903	10,000	7,622	115	25,400		1,009	62	36	
92	Mason City	Lydia M. Barrette	Carnegie	1904	20,000	19,812	570	100,115		7,547	42	78	
93	Maxwell	(Dr. P. Joor)	Carnegie	1904	30,000	35,246	2,257	186,100		9,592	78	8	
94	Mediapolis	Ella M. Graham				2,108	108	1,627				17	
95	Missouri Valley	Estella Turner				4,822	106	7,877		250	226	14	
96	Montezuma	Mrs. Marion H. Clark	Carnegie	1911	10,000	5,888	292	15,887		2,482	190	30	
97	Monticello	Mrs. Hilah Hutton	Carnegie	1918	8,000	3,200	249	14,190		1,519	10	30	
*98	Morning Sun	Lemna Beck	Carnegie	1904	12,500	6,495	124	14,748		1,775	16	33	
99	Mt. Air	Louise Askren											
100	Mt. Pleasant	Elena E. Budde	Carnegie	1917	8,600	4,228	187	17,220		607	106	28	
101	Muscataine	Ellen G. Stocker	Carnegie	1905	12,500	2,168	512	33,944		2,220	62	72	
102	Nashua	Fannie V. Eastman	Musser	1922	48,000	21,727	948	88,078		8,335	42	72	
103	Nevada	Golda Ausbury	Carnegie	1905	6,000	5,217	109	11,065		896	43	24	
104	New Hampton	Isabella Powers	Silliman	1900	10,000	4,443	931	31,714		1,012	23	34	
105	Newton	Gypsis N. Patton	Carnegie	1910	10,000	8,028	999	17,323		974	230	34	
106	Northwood	Mrs. Julia Trustem	City Bldg.	1912	10,000	15,475	741	81,683		3,048	196	72	
107	Osbeck	Grace Hanson	Carnegie	1904	4,000	5,425	259	12,925		712	88	16	
108	Oswell	Mrs. E. D. Glason	City Hall			7,429	112	24,713		2,901	33	42	
*109	Onawa	Mrs. A. W. Burgess	Carnegie	1909	2,000	12,729	232	24,226				45	
*110	Orange City	Mrs. B. H. Wande Waa	City Hall			1,443	52	4,849					

IOWA LIBRARY COMMISSION

LIBRARY STATISTICS

*New libraries.
†No report received.

FINANCIAL STATISTICS OF IOWA LIBRARIES—FREE PUBLIC LIBRARIES

April 1, 1925—March 31, 1926

Number	Place	Population	Year founded	Receipts				Expenditures										
				Income from city tax	No. milly city tax levy	Income from township tax	Income from other sources	Books	Binding	Periodicals	Building, furniture and grounds	Heat and light	Miscellaneous	Salaries				
														Librarians	Assistants	Janitor	Number employed	
1	Adel	1,506		\$ 1,500	5			\$ 64		38	\$ 1,008	\$ 58	\$ 38	\$ 312	\$ 55	1		
2	Akron	1,224																
3	Albia	5,168	1906	3,355	5			1,061	88	185	304	300	182	800	380	2		
4	Alden	759	1882	890	5	\$ 345	25	231			78	129	208	103	875	240		
5	Alrona	3,912	1908	3,700	5			181	51	153	225	416	92	1,345	304	1		
6	Alta	1,195		1,107				9	300		105	62	21	349	25	1		
7	Alton	3,917																
8	Ames	9,322	1904	7,850	5			2,102	1,649	225	181	168	788	2,100	3,376	430		
9	Anamosa	2,377	1905	1,600	4				287		71	38	238	730	153	3		
10	Arnolds Park	333																
11	Arthur	248		75	1			1,723	48			245	17	150		1		
12	Atlantic	5,624	1903	3,391				875	180	124	55	228	122	875	61	480		
13	Audubon	2,124	1912	2,144				308	765		103	215	232	1,090		240		
14	Bedford	2,942	1917	1,849	5			315	399	41	97	311	233	18	840	300		
15	Belmont	1,736	1917	1,849	4			100	369		205	145	407	113	540	18		
16	Bloomfield	2,270	1912	2,587	5			555	70	83	361	347	217	564		300		
17	Boone	12,812	1885	8,669	5			757	849	130	187	1,165	2,180	1,140	2,306	450		
18	Britt	1,087	1918	1,067				2,228	65	41	145	192	9	600		240		
19	Burlington	26,375	1885	17,900				319	2,701	454	255	635	880	4,988	1,975	1,271		
20	Callender	380	1903															
21	Carroll	4,480	1900	2,700	5			173		67	88	64	79	1,200	112	73		
22	Cedar Falls	6,841	1876	8,856	2.8			379	965	31	121	301	353	76	1,200	503		
23	Cedar Rapids	50,560	1807	31,126	4%	222	2,384	5,653	997	635	2,416	1,840	2,296	2,400	14,213	1,733		
24	Centerville	5,611	1901	2,605	3.5			418	540	54	92	41	463	300	1916	510		
25	Central City	764	1895					81	9	31	16	52	160					
26	Chariton	5,235	1900		3			2,784	530	149	85	485	359	900		480		
27	Charles City	6,435	1877	3,703				175	550	928	82	194	534	318	132	1,500		
28	Cherokee	4,807	1908	4,472				207	1,132	226	157	312	13	375	2,072	165		
29	Darinda	4,683	1903	4,448	5	408		100	382		187	2,306	1,033	61	1,575	750		
30	Clarion	2,743	1908	2,418				136	249	14	78	234	450	192	780	180		
31	Clear Lake	2,384	1800	3,130	5		3	561	90	56	583	316	46	340	200	300		
32	Clinton	20,430	1862	19,487				959	5,654	501	281	2,708	1,355	908	2,300	5,727		
33	Colfax	2,041	1862	1,742	5			25	345	64	97	118	108	71	730	116		
34	Coon Rapids	1,234		475	2			133	205			147	18	9	180	24		
35	Corning	1,880	1897	1,716	3			134	309	121	96	58	208	42	975	305		
36	Corydon	1,460	1919	1,600				245				111	172	150	3	220		
37	Council Bluffs	39,795	1881	28,461	4.1			1,367	4,773	1,120	339	1,944	777	1,970	2,540	12,745		
38	Cross	3,114	1904	2,237				780	430	158	56	170	397	66	1,300	364		
39	Davenport	52,469	1900	54,308	1.5	975	2,150	17,000	3,490	1,392	3,097	2,607	3,109	2,700	25,421	4,902		
40	Decorah	4,141		1,879	2			130	575	41	749	231	74	675	243	306		
41	Denison	5,437	1904															
42	Des Moines	141,441	1882	91,470	2%			5,683	19,463	9,271	705	7,894	33,100	5,464	4,200	55,887		
43	DeWitt	2,017	1902	1,775	4.3			97	231	235	80	58	473	42	779	28		
44	Dubuque	40,990	1902	21,352				5,212	1,618	496	874	1,150	1,011	1,929	8,964	1,909		
45	Dunlap	1,330	1913	1,089	5	600		75	50	22	37	85	233	66	480	128		
46	Eagle Grove	4,222	1904	3,496				530	422	100	104	71	284	473	810	78		
47	Edoyleville	955	1909	353	3			191						7	104			
48	Eldon	2,959	1907	908		499		322	328	91	76	199	140	52	355	367		
49	Eldora	2,832	1878	3,433	5			107	310	137	89	163	946	30	1,300	230		
50	Emmettsburg	2,688	1908	1,980	4.1			164	245			67	10	459	67	300		
51	Estherville	5,184	1903	3,325	3			698	114	114	230	50	1,020	220	470	2		
52	Fairfield	6,333	1853	5,321	4.4			761	1,948	174	214	445	517	249	1,500	720		
53	Forest City	2,537	1900	1,763				584	195	131	234	130	135	700				
54	Fort Dodge	21,492	1885	10,364				230	2,887	149	227	1,023	1,002	1,800	3,473	1,300		
55	Fort Madison	11,259	1893	5,019				462	824	178	2,111	343	139	1,125	1,359	420		
56	Galva	360	1907	548				6	188		36			7	176			
57	Garner	1,312	1907	1,633	5	38		256	22	68	303	141	29	560		330		
58	Glenwood	2,514	1909	1,359				353	43	72	68	325	145	30	540	195		
59	Grand Junction	1,908	1903	853	2.3			342	145									
60	Greene	1,299	1903															
61	Greenfield	1,774	1916	1,694	5			232.79	712	21	159	174	88	1,125	11			
62	Grinnell	4,662	1894	2,548	3	130	736	912	233	225	1,270	124	535	1,500	1,320	422		
63	Grundy Center	1,760	1912	1,720				117	561	82	125	17	188	307	780	76		
64	Hamburg	1,903	1919	1,969				336	521	46	51	62	172	4	730	122		
65	Hampden	3,351	1898	3,445	1			165	603	263	38	992	340	109	1,440	100		
66	Harian	2,511		2,706	4			432				102	148	222	48	1,300		
67	Hawarden	2,612	1901	1,936				15	327	51	48	979	141	30	645	162		
68	Hawkeye	387	1888															
69	Humboldt	2,217	1909	2,542	5			147	384			102		302	84	720		
70	Humeston	1,030		351	2			137	26			16	188	27	72	590		
71	Ida Grove	2,973	1880	450	1			113	257			27	15	39	195			
72	Independence	3,460	1873	1,618	2			400	147	91	192	71	900	75	360			
73	Indianola	3,381	1884	4,163	4.9			963	223	122	36	542	308	1,475	716	363		
74	Iowa Falls	15,280	1897	11,702				2,735	473	292	408	643	607	1,800	3,079	1,950		
75	Iowa Falls	4,128*	1846	4,112	4.5			306	949	226	159	138	804	134	960	318		
76	Jefferson	3,123	1911	3,423	2			107	207	43	58	16	340	62	975	361		
77	Keokuk	12,940	1883	7,815	2			1,367	112	229	112	2,136	200	356	1,089	2,231		
78	Knoxville	3,801	1912	1,775	4			592	164	148	64	346	285	650	240	346		
79	Lake City	2,211	1905	1,405	3.3			229				242	10	600		240		

FINANCIAL STATISTICS OF IOWA LIBRARIES—FREE PUBLIC LIBRARIES—Continued

April 1, 1925—March 31, 1926

Number	Place	Population	Year founded	Receipts				Expenditures							Salaries					
				Income from city tax	No. mills city tax levy	Income from township tax	Income from other sources	Books	Binding	Periodicals	Building, furniture and grounds	Heat and light	Miscellaneous	Librarians	Assistants	Janitor	Number employed			
*80	Lake Mills	1,588																		
*81	Lake View	886																		
*82	Laurens	894	1906	746				348				741	107	4	212	30				
*83	Le Mars	4,533	1905	780	1.5				406			161	984	388	42	1,900	480			
*84	Leon	1,900	1906	1,423				256			69	204	159	22	400	13	72			
*85	Logan	1,432	1913	1,135			197	58	66		39	84	235	10	300	105	250			
*86	Malvern	1,357	1913	1,006				9	233	13	37	131	157	41	420		81			
*87	Manchester	3,435	1900	2,791				400	86	97	437	464	154	1,200		192				
*88	Maquoketa	3,643	1904	3,427				154	650	49		305	305	173	1,000	370	300			
*89	Marengo	2,116	1904	2,123				31	153	32	73	272	313	42	640		375			
*90	Marion	4,530	1902	2,480				315	32	113	102	382	101	600	205	217				
*91	Marshalltown	16,868	1898	10,370	4			702	2,290	300	232	691	808	453	2,400	3,032	600			
*92	Mason City	22,082	1895	21,045	4.5			739	5,075	588	489	1,788	1,571	1,030	2,400	9,247	1,210			
*93	Maxwell	765	1901	304				151	21	148	16	8	150							
*94	Medapolis	839		556	2			69	763	21		316	40	10	325					
*95	Missouri Valley	4,283	1887	2,780	5			175	389	65	65	162	300	70	917		345			
*96	Montezuma	1,323	1919	2,443		300		437	117	85	85	388	327	68	608		230			
*97	Monticello	2,215	1904	2,404				233	75	95	181	322	25	780	127	224				
*98	Morning Sun																			
*99	Mount Pleasant	1,677	1913	2,144	4.5			208	64	83	84	238		78	900	25	127			
100	Mount Pleasant	4,445	1902	3,488	5			195	967	213	159	477	171	59	700	667	300			
101	Muscateine	10,821	1901	11,473	2				1,808	513	279	1,392	822	323	1,680	4,132	1,100			
102	Nashua	1,227	1902	1,246	5				116	247	59	65	69	129	22	600	56	92		
103	Nevada	2,531	1876	1,135	2				1,167	391	105	131	431	74	1,320	76	173			
104	New Hampton	2,235	1868	2,347	4.4				1,414	382	46	59	2,024	170	20	788	35	210		
105	Newton	765	1896	6,785				410	1,530	200	150	533	431	401	1,457	1,540	423			
*106	Northwood	1,439																		
107	Odebit	1,294	1908	1,905					505	403		91	146	94	68	635		180		
108	Oelwein	5,053	1911	1,764	2				437	227	142	182	125	123	1,080	304				
109	Osawa	2,043	1902	2,184			1,191	480	703	173	290	318	35	128	1,300	600	180			
*110	Orange City	1,630			1				81	158		31	61		135					
111	Osage	2,953	1875	3,598	3		665	817	187	172	861	490	122	1,010		433				
112	Oswego	2,727	1911	2,637	3.7			46	294	13	66	111	264	52	600	185	185			
113	Oskaloosa	10,331	1899	9,224	4.5			392	2,079	575	277	900	1,129	806	15,687		800			
114	Ottumwa	26,075	1902	4,702			10,000	5,574	1,900	461	1,483	1,500	3,901	2,200	6,298	1,390				
115	Parkersburg	1,149		793	2				309		43	35	150							
116	Paton	1,213	1900	353				22	47											
117	Paulina	939	1908	793					343			348	13	5	132		65			
118	Pella	3,079	1906	2,662	5			23	599	33	132	149	188	93	780	617	205			
119	Perry	5,642	1904	2,418				100	796	92	132	9	597	79	1,140	385	300			
120	Pringbar	391							40	39										
121	Red Oak	5,668	1905	4,480	4			263	1,474	311	205	165	529	317	1,209	540	157			
122	Reinbeck	1,417	1915	1,573				83	44	77	4									
123	Rock Rapids	2,098	1892	1,544				10	393	19	237	207	400	89	1,115		130			
124	Rockwell City	2,183	1900	3,209	5			97	530	70	90	591	445	108	650	31	300			
125	Sac City	2,682	1912	2,113	4.5	567		322	1,064	82	90	218	348	117	960	132	275			
126	Sanborn	1,373	1901	10,600	5				779	117	67	59	59	1,433	294		67			
127	Sheldon	3,948	1897	2,392				7	641	273	95	225	337	39	1,000	90	299			
128	Shenandoah	5,194	1905	4,306	5			574	218	128	690	461	70	2,040	43	300				
129	Sibey	1,822	1908	1,481		629		62	154	59	3	18	349	40	1,125	4	98			
130	Sigourney	2,278	1914	2,645	5				682	54	80	131	219	175	790		300			
131	Sioux City	75,411	1877	48,962			2,125	6,837	1,131	804	5,108	2,120	3,885	4,000	24,128	3,018				
132	Spencer	4,089	1909	2,763				59	496	125	139	111	439	14	855	327	480			
133	Spirit Lake	1,723	1894	2,580	5			402	753	80	38	32	316	61	920		390			
134	Storm Lake	3,046	1906	5,028	5				1,103	91	182	67	336	84	1,307	650	480			
135	Stuart	1,311	1901	1,443				402	98	82	34			47	639					
*136	Sutherland	823																		
137	Tama	2,656	1906	1,790	3.36				505	4	91	119	203	29	480		242			
138	Tipton	2,109	1901	3,079	5	322		185	508	299	14	655	311	211	1,020	420	415			
139	Toledo	1,659	1920	831	4				30	605	29	91	309	65	840					
140	Traer	1,400	1912	608		392		238	197	23	44	98	244	123						
141	Villisca	2,044	1908	1,730	5			423	855	130	70	203	255	125	648		175			
142	Vinton	3,259	1902	2,060	3.6				480		114	204	114	22	750	81	390			
143	Washington	4,288	1878	2,471	2.5				474	65	141	133	166	44	900	229	194			
144	Waterloo	36,771	1887	36,940	5			503	7,188	2,210	801	1,181	1,455	2,400	2,600	10,171	2,392			
145	Waukon	2,662							394	30	77	54		33	950		120			
146	Waverly	3,309	1885	3,204	3				702	119	234	76	420	104	720	264				
147	Webster City	6,649	1908																	
148	Wellman	832	1908	795	3				217	44	16	138	20	29	339	18				
149	West Branch	747	1904	912	4.3				351	62	84	32	81	390						
150	West Liberty	1,710	1900	2,108				483	397	46	105	207	298	312	730	60	389			
151	Whiting	627	1913											22	5	300				
152	Winterset	3,063	1892	1,825	5				294			297	423		1,500	600	618			
153	Woodbine	1,383	1908	1,012	3	511	26	300	60	102	452	173	70	480		240				

*New library.
 †No report received.
 ‡Staff salaries included.
 §Report for fifteen months.
 ¶Endowed library.

STATISTICS FOR IOWA LIBRARIES FOR 1925—ASSOCIATION AND SUBSCRIPTION LIBRARIES

Place	Librarian	Management	Population	Number volumes added in 1925	Total number of volumes	Number of volumes loaned in 1925	Hours open
Afton	Mrs. Bertha Manely	Library Association	1,016	75	2,000	1,990	2
Albion			928				
Amita	Mrs. Ruby E. Biggs	Library Association	1,161				4
Anthony	Mrs. A. L. Wolfe	Women's Club	783	75	1,780	300	4
Arlington	Mrs. C. H. Githell	Triangle Club	715	109	100	140	4
Aurelia	Pearl Miller	Library Association	677	39	687	1,305	9
Avoca	Mrs. Walter Davis	Library Association	1,548	50	2,750	3,416	4
Battle Creek	Mrs. Frank Campbell	Library Association	739	156	1,530	1,535	
Belle Plaine	Mrs. Ida H. Rank	Library Association	3,395	73	3,200	3,290	14
Bellevue	Nettie B. Lenz	Library Association	1,938	659	1,700	3,989	11
Brooklyn	Gertrude Newkirk	Columbian Club	1,150	95		3,331	2
Buffalo Center	Mrs. Fred Miller	Community Club	824				
Burt	Lulu Hawcott	Library Association	548	132	564	2,500	4
Clearfield	Mrs. Amy Townsend	Library Association	948	54	1,099	2,899	10
Correctionville	Mrs. F. W. Woodruff	Library Association	1,623	145	3,475	5,338	5
Corwith	Elva Stambaugh	American Legion Auxiliary	556	97	479		6
Creston	Bella Anderson	Board of Education	8,100	24	5,300	10,638	38
Dow City	Elen Goddard	Library Association	606	72	1,363	1,700	4
Dumont	George S. Brown	Library Association	700	50	600	1,300	11
Early	Mrs. J. W. Graham	Civic Improvement Club	545		1,300	4,000	30
Elliot	Mrs. Mae Alor	Library Association	498				
Everly	Ella Rolf	Woman's Club	627				
Exira	Mrs. Lucile Fulton	Thursday Club	823				
Farmington	Evva C. Humphrey	Library Association	1,091	152	2,570	4,204	3
Garden Grove	Hazel L. Vall	Library Association	618	221	4,001	7,872	16
George	Mrs. C. A. Crawford	Woman's Club	912	374	374	50	3
Gilmore City	Mrs. C. M. Watkins	W. C. T. U.	830		000		
Glidden	Mrs. Lillian Powers	Woman's Club	889		1,000		5
Gowrie	Mrs. Caroline Messerole	Library Association	994	7	575		3
Griswold	Mrs. Guy DeWitt	Civic Club	1,106	225	1,000		11
Hathrie Center	Ina Bates	Woman's Club	1,834	156	675		12
Harris	Mrs. J. H. Nichol	Woman's Club	599		175		3
Hospers	M. Jansma	Library Association	509	50	600		48
Inwood	Mrs. C. Ladd	Library Association	751	250	881	3,118	6

Ireton	Mrs. Charles Atwood	American Legion Auxiliary	674	276	750	1,100	10
Jericho (New Hampton)	Willy Bruckel	Soldiers Union	716	60			3
Jesup	Mrs. W. W. Blaser	Exer Deutz Club	966	113	2,309	1,860	9
Keosauqua	Mrs. Estelle B. Walker	Library Association	285	50	1,132	1,798	4
Kiron	N. Florence Johnson	B. Y. P. U.	730				
Lake Park	Mrs. J. G. Chrysler	Woman's Club	463				
Lakota	Mrs. H. Lamont Dalton		1,613	97	1,754	4,057	8
Lamoni	Audentia Kelley	Library Association	286	23	974	1,341	6
Letts	Mrs. Harriet Shellabarger	Library Association	575	25	3,075	2,000	6
Lewis	Eunice Porter	Crescent Club	601	70	595	2,074	8
Lorimor	Mae L. Courtney	Library Association	541	10	495	1,718	3
Lost Nation	Marie Mohl	Hearthstone Club	1,200	65	802	2,560	4
McGregor	Mrs. Lena D. Myers	Library Association	1,475				
Manly	Mrs. J. H. Schafer	Library Association	1,429	300	1,035	2,000	4
Manson	Mary E. Horton	Woman's Club	1,333				
Mapleton	Eris Wilson	Public School	538	137	1,100	4,300	6
Marathon	Mrs. J. Delahunt	Library Association	1,056	118	1,361	4,230	8
Marcus	Myrtle Wiley	Library Association	339	122	569	658	3
Martinsburg	Reida Hampton	Library Association	1,163	434	1,012	5,484	6
Millford	Mrs. Q. C. Guthrie	Woman's Club	773	75	2,000	1,500	8
Mitchellville	Fannie Brown	Library Association	792		450		6
Murray	W. F. Johnson	School Board	1,333	30	1,240	2,500	6
New London	Clara B. Kongable	Library Association	1,090	90	1,500	1,500	5
New Sharon	Mrs. C. W. Phillips	Woman's Club	966	101	464		4
Newell	Lulu Moorhouse	Library Association	413		350		8
Oakville	Mrs. Clark Sexton	Library Association	615	198	804	2,187	4
Obeyesche	Mrs. Lulu Hornel	W. C. T. U.					
Oxford Junction							
Panora	Ethie Bobbett	Woman's Club	964	77	1,228	1,547	8
Pocahontas	Mrs. W. C. Ralston	Woman's Club	1,333	20	243	1,077	4
Pomeroy	Helien Oehmke	Community Club	1,030	190	2,000		
Postville	Amy Maier	Community Club	772	600	000	120	6
Prairie City	Mrs. C. B. Van Vorhis	Community Club	656	712	712	1,295	
Preston	Margaret Godes	Library Association	734				
Redfield	Martha Williams	Woman's Club	972	348	1,029	2,645	
Riceville	Mrs. Eva Morey	Library Association	956	146	1,245	2,940	20
Rockford	S. Jennie Pullerton	Library Association	734				
Rockwell	Mrs. Grace R. McClelland	Library Association	411	112	680	3,867	13
St. Charles	Mrs. Ethel Armstrong	Booster Club	511	20	840	525	3
Salem	Mrs. Ethel Garretson	Woman's Club	733		1,058	2,560	10
Schaller	Mrs. Charles E. Kelley	Library Association	963	82	1,257		6
Seranton	Grace Lewis	Library Association	1,026	62	816		6
Sheffield	Mrs. M. C. Ferrin	Library Association	1,111				
Sidney	Mrs. Hugh S. Jackson	Library Association	696		1,351	5,373	11
Silver City	Mrs. R. P. Galt	Woman's Club	495		1,674	6,176	9
Sioux Rapids	DeNora Skinner	Library Association					
Story City	Mrs. C. J. Rastvedt	Library Association					

Place	Librarian	Management	Population	Number volumes added in 1925	Total number of volumes	Number of volumes loaned in 1925	Hours open
Stratford	Mrs. Ida L. Beech	P. T. A.	685	90	477	300	8
Swa City	Mrs. J. E. Dye	Thursday Club	699	361	1,110	1,300	9
Tionka	Mrs. C. H. Downs	Woman's Club	445	57	268	1,110	9
Union	Arthur Senecal	Chapin School	577	65	1,016	504	9
Wabasha	Ellen C. Thompson	Library Association	913	40	1,300	210	9
Wapello	Mrs. V. L. Christie	Woman's Club	1,419	819	319	1,100	30
Wayland	Marie M. Imhoff	Menomnie Sunday School	658	60	488	1,560	3
What Cheer	Mrs. F. M. Gordon	Thursday Club	1,895	985	2,000	1,800	4
Whitsted	Mrs. F. H. Meyers	Improvement Club	1,895	985	2,000	1,800	4
Wintrop	Mrs. M. A. Dunlap	Library Association	585	45	2,000	1,800	4

*New libraries.
†No report received.

COLLEGE AND ACADEMY LIBRARIES

Place	Name of Library	Librarian	Volumes Added in 1925	Total Number Volumes
Cedar Rapids	Coe College	Betty H. Pritchett	2,811	26,025
Clinton	Wartburg College			
Davenport	St. Ambrose College	Rev. J. B. Code	500	10,000
Decorah	Luther College	Karl T. Jacobsen	1,510	31,708
Des Moines	Des Moines University	Eva M. Page	834	23,852
Des Moines	Drake University	Mary Nethercutt	1,667	35,184
Dubuque	Columbia College	L. Kuenzel	1,857	30,467
Dubuque	University of Dubuque	Paul Flo	200	12,000
Fairfield	Parsons College	Elva E. Rolon	1,106	15,925
Fayette	Upper Iowa University	Dora F. Carter	196	10,000
Forest City	Waldorf College	Martha Wangberg	300	1,430
Grinnell	Grinnell College	Isabelle Clark	2,080	74,330
Hopkinton	Lenox College	Mabel Briney	52	10,319
Indianola	Simpson College	Ellen Creek	809	18,982
Iowa Falls	Elsworth College	Novella O'Rourke	739	12,726
Lamoni	GraceLand College	Lydia T. Eielson	179	6,740
LeMars	Western Union College	B. F. Zuehl	737	22,567
Mt. Pleasant	Iowa Wesleyan College	Mrs. F. McKibbin	1,377	56,549
Mt. Vernon	Cornell College	May L. Fairbanks	1,490	12,418
Oskaloosa	Penn College	Marie Greiner	1,340	10,243
Pella	Central College	Maude A. Price	1,819	24,700
Sioux City	Morningside College	Blanche L. Bailey	441	14,224
Storm Lake	Buena Vista College	Magdalene K. Guetzlaff	176	3,568
Waverly	Wartburg Normal College	Daisy Denn		
University Park	John Fletcher College			

MISCELLANEOUS LIBRARIES

Place	Name of Library	Librarian	Volumes Added in 1925	Total Number Volumes
Cedar Rapids	Masonic Library	Charles C. Hunt	4,177	32,541
Davenport	Academy of Sciences	J. H. Paarmann	982	76,596

STATE SUPPORTED LIBRARIES

Place	Name of Library	Librarian	Volumes Added in 1925	Total Number Volumes
Ames	Iowa State College	Charles H. Brown	10,940	127,278
Cedar Falls	Iowa State Teachers Coll.	Anne S. Duncan	4,534	82,951
Des Moines	Historical Department	Alice Marple	1,079	30,515
Des Moines	State Library (including Law and Medical)	Johnson Brigham	8,314	198,994
Des Moines	Traveling Library	Grace C. Murphy	7,416	66,697
Iowa City	State Historical Society	Ruth A. Galaher	3,024	60,000
Iowa City	State University	John B. Kaiser	19,381	250,361
Iowa City	S. U. I. Law Library	Helen S. Moylan	4,307	41,736

LIBRARIES IN STATE INSTITUTIONS UNDER BOARD OF CONTROL

Librarian—Position Vacant—Statistics Furnished by Board of Control.

Place	Name of Library	Number of Volumes Added in 1925	Total Number of Volumes
Anamosa.....	State Reformatory.....	64	1,508
Cherokee.....	State Hospital.....		722
Clarinda.....	State Hospital.....		722
Davenport.....	Soldiers' Orphans' Home.....	108	2,287
Eldora.....	Training School for Boys.....	180	3,125
Fort Madison.....	State Penitentiary.....		6,441
Glenwood.....	Institution for Feeble-minded Children.....	200	1,007
Independence.....	State Hospital.....		4,548
Marshalltown.....	Iowa Soldiers' Home.....	64	1,508
Mitchellville.....	Training School for Girls.....	20	1,842
Mt. Pleasant.....	State Hospital.....		
Oakdale.....	State Sanatorium.....	535	3,245
Rockwell City.....	Women's Reformatory.....		649
Toledo.....	Juvenile Home.....	1,432	3,548
Woodward.....	State Hosp. and Colony for Epileptics.....		1,314

State of Iowa

1925

REPORT OF THE

Superintendent of Banking

FOR THE

Year Ending June 30, 1925

L. A. ANDREW
SUPERINTENDENT OF BANKING

Published by
THE STATE OF IOWA
Des Moines