

State Capitol Building.

REPORT
OF THE
Custodian of Public Buildings

AND PROPERTY

TO THE
GOVERNOR OF IOWA,

FOR THE YEARS 1900 AND 1901.

JANUARY 1, 1902.

J. D. McGARRAUGH
CUSTODIAN OF PUBLIC BUILDINGS AND PROPERTY

DES MOINES
B. MURPHY, STATE PRINTER.
1902.

CUSTODIAN'S REPORT.

OFFICE OF THE CUSTODIAN OF
PUBLIC BUILDINGS AND PROPERTY, }
January 1, 1902.

To his Excellency, L. M. Shaw, Governor of the State of Iowa:

DEAR SIR,—In accordance with section 150, chapter 6, of the code, I have the honor to submit herewith the biennial report of this office, consolidating the expenditure of the two years preceding the meeting of the general assembly, as required by this law, showing the total expenditure for the period from January 1, 1900, to December 31, 1902, inclusive. The quarterly reports, as required by this office in compliance with the same section of the code, have been submitted to the executive council.

The total expenditure for the two years for all purposes, coming properly under the taking care of the capitol and public buildings, has been \$51,342.09. This does not include the extra help of janitors and elevator attendance during the meeting of the last general assembly, as such help was hired and paid by the general assembly, and was only under the supervision of the custodian. To make the service more efficient, the custodian should have the selection of his help, as the law makes him responsible for the good care of the state's property.

In compliance with the law, all the supplies for the different departments under my charge are drawn from the supply department, and contracted for by the executive council.

Your attention is most respectfully called to the following exhibits:

Exhibit "A" is a classified and itemized statement of all expenditure during the two years.

Exhibit "B" is a statement of all refuse material sold and money paid to the treasurer of state.

Exhibit "C" is an invoice of all material and tools on hand.

Exhibit "D"—invoice of furniture.

The Historical Building, or rather the east wing of the intended building, has been completed since I submitted my last

report to the Twenty-eighth General Assembly, and has been accepted by the executive council, and the expenses of taking care of same, as heating, lighting, water, and other repairs, are all included in this report.

By the removing of the historical collections, some very good rooms became vacant and were assigned to the use of the board of control.

The attorney-general also required more room, and the council gave to his use the room then occupied by this office, after having made a partition through the room to give the attorney-general the much needed private office.

The room formerly occupied by the attorney-general is now used by the horticultural society, thereby relieving the board of health rooms, as both were before in the same rooms.

The custodian's office was then moved to the rooms to be jointly occupied with the bureau of labor commission.

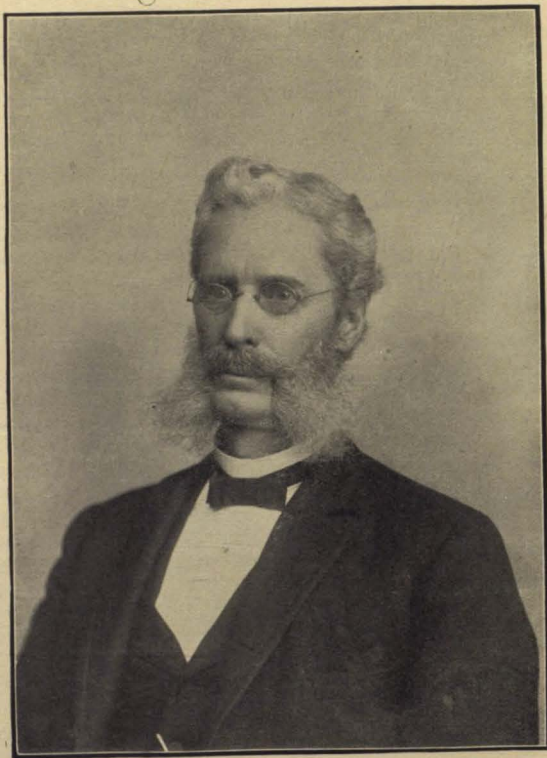
The section which requires the custodian to make this report also charges him to make, and include in his report, a description of all state property at the seat of government.

The rooms occupied as repair shops by the engineer and carpenter were found to be too small, and as the rooms were needed for other purposes, the executive council decided to move the repair shop to the then unused front part of the boiler house, and this makes a very good and suitable location for the same. This leaves the old carpenter shop for the use of the much desired lunch room in the building, and in the old engineer's room is now located the mail carrier.

All these changes in the above named departments have materially increased the expenses of this department, but as the state's business is increasing rapidly, it became absolutely necessary to provide suitable room for the transaction of the same.

CAPITOL SQUARE.

Containing 10.02 acres, deed by W. A. Scott and Harrison Lyon, April 28, 1856. On this square is built Iowa's great capitol, which, with the improvement of grounds, cost about \$3,000,000. It covers about 58,850 square feet, and there are in the basement, which is 13 feet 1 inch high, twenty-eight rooms, occupied by the board of control, dairy commission, pharmacy commission, land office, custodian's office, board of health, mine inspectors, labor commission, geological survey, G. A. R., supply department secretary



General Ed. Wright.

First Custodian of Capitol Building from 1884 to March 31, 1890.

of the executive council and document room. The other rooms are occupied as storerooms for the different departments.

On the first or main floor, which is 23 feet 9 inches high, are thirty rooms, occupied by the governor, auditor, superintendent of public instruction, treasurer, horticultural society, adjutant-general, attorney-general, clerk of the supreme court, railroad commissioners, agricultural society, six judges of the supreme court, consultation room, supreme court room, and secretary of state. On both of these floors, extending from the center space under the dome 66 feet in diameter, are corridors to the north and south, which are 18 feet wide, and to the east and west, which are 54 feet 6 inches wide, the full length and width of the building.

On the second floor is located the state library in a room in the west wing, 52 feet 9 inches by 108 feet 4 inches, with a ceiling 44 feet 9 inches high. In the south wing is the senate chamber, 58 feet by 94 feet 4 inches, and 41 feet 9 inches in height. In the north wing is the house of representatives, 74 feet by 91 feet 4 inches, and 49 feet 9 inches high, besides there are special rooms on this floor for the lieutenant-governor and the speaker, and on this and the third floor are twenty-nine committee rooms and a postoffice for the general assembly.

The attic contains the nine ventilation shafts, each 6 feet in diameter, which connects with every room in the building, and are sufficiently large to renew the air in the whole building every 25 minutes. In the cellar are located all the main pipes for steam, high and low pressure, gas and also hot and cold water, the feeders for something over 40 miles of pipes scattered through all the rooms in the building. The cellar is also used for supplying the whole building with fresh air through some of the cellar windows, by drawing its greatest supply through a tunnel which connects the capitol with the boiler-house, and which is about 10x10 feet in the clear, and extends from the north portico across Grand avenue.

The capitol has a length of 363 feet 8 inches by 246 feet 11 inches wide, and a total height of 275 feet, while the main roof is 92 feet 8 inches high. The whole building is practically fire-proof, and while it was thought to be amply large enough for doing the state's business when it was built, and, in fact, a number of rooms stood vacant for a long time—all the rooms are now occupied, and large quantities of paper and books are piled in the corridor of the basement for the want of more room.

THE IOWA STATE CAPITOL.

The building is open to visitors from 7 A. M. to 6 P. M., and visitors can step in all of the state offices, house, senate and library, and policemen in charge will take pleasure in furnishing any information desired.

CAUTION.

Never lay anything of value down while in the building. If you do not wish to carry it, give it to a policeman and he will take care of same and return when called for.

The first act of the general assembly of Iowa, for the building of a new capitol building, one that would comport with the dignity of the state, was passed April 6, 1868.

Under this act, the "census board" were authorized to procure plans and specifications. Many plans were submitted, and from the best of these Messrs. Cochrane and Piquenard were commissioned to prepare a plan better suited to the wants of the state than any one submitted.

April 13, 1870, a law was passed creating the original board of capitol commissioners, and under their supervision the cellar was excavated and most of the foundation walls were built, and on Thursday, November 23, 1871, the corner stone was laid with appropriate ceremonies participated in by various state, military and civil organizations and societies, besides many distinguished citizens from abroad.

The corner stone is seven feet long, three feet wide and three feet thick, and was made from a "prairie boulder" procured in Buchanan county.

By an act of the general assembly, dated April 10, 1872, the board of capitol commissioners were reorganized with the governor as ex-officio president, and the following gentlemen as members: Messrs. John G. Foote, of Burlington; Maturin L. Fisher, of Farmersburg; Peter A. Day and R. S. Finkbine, of Iowa City.

When this board first organized, they appointed A. H. Piquenard, of Springfield, Ill., sole architect, and General Ed Wright as secretary of the board. They also made Mr. R. S. Finkbine superintendent of construction, and Mr. John G. Foote superintendent of finance.

This organization was preserved, except so far as death has removed its members. In November, 1876, Mr. Piquenard, the architect, died, and the following January, Messrs. Bell and Hackney, two young men who had been in the employ of Mr.

Piquenard in this work, were selected to carry out the original design in its true spirit. On the 5th day of February, 1879, Mr. Fisher was removed from the board by death, and Mr. Cyrus Foreman, of Osage, was appointed in his place.

The first act of the present board was to remove the original foundation, which was found to be defective, and replace it with more substantial material. This was done at the expense of \$52,352.76.

Since that time the work has progressed slowly on account of the small appropriations each year, but without material interruption. One of the greatest troubles the board and architects have had to contend with has been the selection of building stone that will stand the action of time in this climate.

It was the desire of the board to procure all of the stone, as well as other materials when practicable, within the borders of the state, but, after a vain search through the various quarries, it was deemed best to go elsewhere to procure the huge blocks which make its walls.

The original design for the main cornice and the domes, was to make them of cast and sheet iron, but with the consent of the general assembly these were changed to stone, covering only the hemispherical portion with metal, and this is of very heavy copper which is as durable as time.

The partitions are all of brick or other fireproof material, and the floors are made with iron beams and brick arches with either an encaustic tile or wood covering.

The rooms are all warmed with steam, with both direct and indirect radiation, from a battery of seven large boilers located in a building across the street on the north side, and the rooms are ventilated by exhausting the air ducts built in the walls.

The roof is made of iron frame work, covered with porous terra cotta and slate laid in cement mortar.

The corridor floors are all made of encaustic tile laid in very rich patterns, and the wainscotings of the corridors and all the principal rooms of both office and second story are made of domestic and foreign marbles. The large columns in the house and senate and those in the upper part of the dome are made of Scagliola, not because it is a *cheap* imitation of marble, but because it is an imitation as good as marble and better suited to places where used.

The grand stairway is made of marble on an iron frame work, while the other stairways are all of iron.

The legislative portion of the building was completed and dedicated to its future use on the 17th day of January, 1884, and the Twentieth General Assembly held its deliberations in the spacious halls provided for this purpose.

A short time after this the valuable collection of books in the State Library were moved into the large rooms provided for them, and Governor Sherman occupied temporary quarters in two of the committee rooms on the second floor.

The Twenty-eighth General Assembly created by an act a capitol improvement commission, and Gov. L. M. Shaw appointed the following commissioners, Peter A. Day, Iowa City; Mr. Cummings, Des Moines; Mr. Joshlin, Cedar Rapids, to serve as such. Their duty was to examine and report to the Governor on the completion and necessary repairs required to be made on the capitol building.

KINDS OF STONE AND WHERE PROCURED.

The foundation stone are principally from the Bear Creek and Winterset quarries in this state.

The basement story is from the Iowa City quarries.

The buff colored stone in the superstructure is from St. Genevieve, Mo., and the blue stone is from Carroll County, Mo.

The granite in the base course was partially procured from prairie boulders in Buchanan County, but the dark colored pieces are from Sauk Rapids, Minnesota.

The outside steps and platforms are the Forest City stone, near Cleveland, Ohio. The rails are the Sauk Rapids granite.

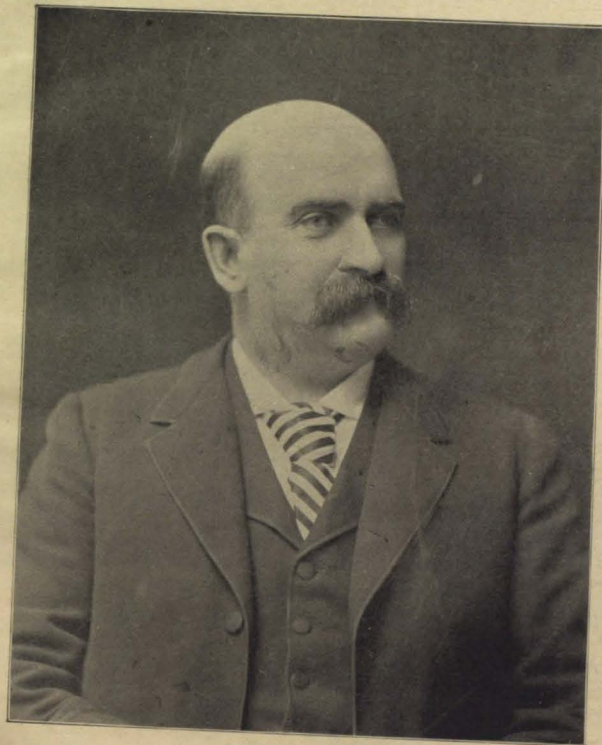
The pilasters and piers in the interior of basement are from Anamosa, in this state, and Lemont, Illinois.

The red granite columns in the second story are from Iron, Mountain, Mo. The dark colored granite in base and cap of pedestals, is from Sauk Rapids, Minnesota, while the carved capitals, pilasters and piers are of Lamont stone.

KINDS OF MARBLE AND WHERE PROCURED.

DOMESTIC.

Old Tennessee.....	from Tennessee
Knoxville.....	from Tennessee
Holstein River.....	from Tennessee
Glen Falls.....	from Tennessee
Moriah.....	from Vermont



W. L. Carpenter.

Custodian of Public Buildings and Property from April 1, 1880, to March 31, 1884.

Virginia.....	from New York
Iowa Coral.....	from Charles City, Iowa

FOREIGN.

Mexican Onyx...	from Mexico
Lisbon.....	from Spain
Sienna.....	from Italy
Verona Red.....	from Italy
Statuary White.....	from Italy
Veined.....	from Italy
Italian Dove.....	from Italy
Alps Green.....	from Italy
Languedoc.....	from France
Rose Vif.....	from France
Rouge Greotte.....	from France
Greotte Renaissance.....	from France
Yellow Eschalleon.....	from France
Fermosa.....	from Germany
Bongord.....	from Germany
Belgian Black.....	from Belgium
Bardiglio.....	from Italy
Brocatelle.....	from Italy
Levanto.....	from Italy
Juan Fleure.....	from France
Kilkenny Green.....	from Ireland
Victoris Red.....	from Ireland

Cost of marble work, \$114,815.

GENERAL DIMENSIONS.

Length north and south, including porticos	363 feet 8 inches
Length east and west, including porticos.....	246 feet 11 inches
Length north and south fronts.....	175 feet 0 inches
Length east and west fronts.....	118 feet 8 inches
Width, east and west through arcades.....	100 feet 10 inches
Height to top of main cornice.....	92 feet 8 inches
Height to top of balustrade.....	99 feet 8 inches
Height to top of stylobate	114 feet 2 inches
Height to top of dome balcony.....	219 feet 1 inch
Height to top of lantern	249 feet 0 inches
Height to top of ball above lantern.....	259 feet 0 inches
Height to top of finale.....	275 feet 0 inches
Height to top of small domes.....	152 feet 0 inches
Height of basement story.....	13 feet 1 inch
Height of office story.....	23 feet 9 inches
Height of second story	22 feet 9 inches
Height of third story.....	20 feet 9 inches
From office floor to first balcony in dome ...	101 feet 6 inches
From office floor to second balcony in dome.....	153 feet 2 inches

From office floor to canopy.....	175 feet	5 inches
The rotunda is in diameter.....	66 feet	8 inches
The exterior diameter of dome is.....	80 feet	0 inches
The house of representatives is 74x91 feet 4 inches by	47 feet	9 inches
The senate chamber is.....	58x91 feet 4 inches by	41 feet 9 inches

LOCATION OF ROOMS AND OFFICES.

In the north wing is the house of representatives, which is 74 feet by 91 feet 4 inches and 47 feet 9 inches high. It is larger than the senate chamber, but designed to correspond with it in other respects. The finish and furniture of this room are of black walnut, with marble. The frescoing of the house is of a brighter tone, and, instead of the allegorical paintings which decorate the senate ceiling, there has been introduced here the portraits of the following persons: Presidents, Washington and Lincoln; governors, Robert Lucas and James W. Grimes; justices of the supreme court, Caleb Baldwin and Charles Mason; speakers of the house of representatives, Rush Clark and James P. Carlton; generals, M. M. Crocker and S. R. Curtis.

There are one hundred desks for members of the house and fifty for the members of the senate.

Back of the house of representatives are rooms for the speaker, clerks and committees.

ITEMS.

There are 398 steps from the ground up to the dome platform or lookout.

There are 787 yards of carpet in the senate chamber and 994 yards in the house of representatives.

There are twenty-nine kinds of marble in the building.

The kinds of wood employed in the building are: Ash, red oak, white oak, black walnut, butternut, chestnut, cherry, mahogany, poplar, yellow pine, white pine and catalpa.

Cost of the building to July 1, 1885, \$2,615,170.87.

Cost of furniture to July 1, 1885, \$82,789.89.

STATUARY.

[Beginning with north of library door: History, Science, Law, Fame, Literature, Industry, Peace, Commerce, Agriculture, Victory, Truth and Progress.

The first door to the left as you approach the senate chamber is the entrance to the stairway leading to the dome.

All the rooms on third floor are committee rooms, of which there are twenty-nine in number.

The dome is covered with gold leaf, at a cost of \$3,500.

The pictures on the ceiling of the supreme court room are of the type of Greek mythology.

No. 1. North end, the leading figure, Justice on her throne. To her left stands Columbia, ever ready to sustain her decisions by word or deed. The figure to the right of Justice rejoices that the decision is in her favor. The sitting figure on the right denotes sorrow as the decision is rendered against her, but is content when she finds by examining the law that the decision is according to law. To the left, a mother is explaining to her son the laws.

No. 2. Columbia reigning on her throne. Above the globe, in unity with the goddess of Justice, the patrons of the states come to pay their homage, bringing with them little children, which represent the territories. Iowa, who is a special favorite in Columbia's household, is seen sitting on the steps of the throne with club and coat of arms, ever ready to defend her friend (the Union), Columbia, in case of need. In front of the throne is chiseled in everlasting rock the memorable date 1776, the foundation of the republic. The American eagle is proudly soaring over all, holding in his talons the historical emblem and in his beak a streamer on which is inscribed "E Pluribus Unum."

No. 3. Justice and peace represented as ruling over the land bringing prosperity and plenty, culture and happiness, while on the other rebellion is restrained and smitten down by Justice's strong arm (General Grant).

No. 4 represents Ceres, the goddess of Agriculture.

The small pictures are simply agricultural scenes, by Fritz Melzer, Berlin, Germany.

STATEMENT OF MATERIALS RECEIVED FROM APRIL, 1872 TO
JUNE 30, 1886.

	Yards.	Feet.	Inches.
Rubble stone, for concrete.....	1,020	00	0
Rubble stone, for walls.....	1,129	15	5
Total rubble	2,149	15	5
Dimension stone in foundations.....	4,629	11	8

DIMENSION STONE IN SUPERSTRUCTURE.

	Cubic feet.
Granite.....	11,370.0
Iowa City limestone.....	44,429.2
Anamosa limestone.....	1,654.2
Lemont limestone.....	17,404.6
Carroll county sandstone.....	145,789.7
St. Genevieve sandstone.....	130,768.11
Forest City sandstone.....	9,623.4

Total stone in superstructure . . . 361,339.912

	Bbls.	Lbs.
Cement—		
Hydraulic cement.....	29,683	62
Portland cement.....	1,084	100
Total cement.....	30,767	162
Stucco, tons.....		549
Stucco (fine), barrels.....		1,936
Kune's cement, barrels.....		66
Lime, bushels.....		21,160½
Sand, bushels.....		366,307
Water gallons.....		11,901,145
Brick—		
Fire brick.....		21,100
Pressed brick.....		17,350
Common brick.....		13,975,380

Total brick..... 14,013,730

Pitch, pounds.....	43,480
Cast iron, pounds.....	638,561
Wrought iron, pounds.....	2,220,023

Total iron, pounds..... 2,848,584

Cast steel, pounds.....	3,139½
Nails, pounds.....	87,462
Copper and bronze, pounds.....	202,341
Drain tile, feet.....	3,574½
Slate, squares.....	568½
Porous terra cotta, squares.....	524½

Terra Cotta—	
Ballusters, pieces.....	444
Chimney tops, pieces.....	13
Cornice, feet.....	23
Hip and ridge moulds, feet.....	840
Lead—	
Sheet, pounds.....	13,791½
Pig, pounds.....	8,439



George Metzger, Davenport, Iowa.

Custodian of Public Buildings and Property from April 1, 1894, to March 31, 1898.

Pipe, pounds.....	1,651
Total pounds.....	23,881½
Sheet iron—	
Black, pounds.....	13,615
Galvanized, pounds.....	11,352
Total pounds.....	24,967
Lumber—	
White pine, feet.....	1,595,637
Yellow pine, feet.....	194,002
Poplar, feet.....	44,833
Black Walnut, feet.....	44,843
White Walnut, feet.....	45,044
Cherry, feet.....	35,520
Ash, feet.....	101,746
Chestnut, feet.....	30,957
White Oak, feet.....	30,957
Red Oak, feet.....	22,324
Mahogany, feet.....	5,471
Total lumber, feet.....	2,230,528
Lath, feet.....	466,900
Lath iron wire; square yards.....	1,006
Iron sash cord, feet.....	40
Copper sash cord, feet.....	13,400
Brads, papers.....	878
Wood screws, iron, gross.....	2,655
Wood screws, brass, gross.....	352
Wood screws, nickel plated, gross.....	9
Wood screws, blued, gross.....	6
Wood bolts.....	14,539
Steam pipes, feet.....	170,167
Water pipes, feet.....	1,726
Gas pipes, feet.....	28,892
Galvanized iron pipes, feet.....	4,561
Brass pipes, feet.....	3,538
Brass pipe, tinned, feet.....	3,539
Cast iron pipe, feet.....	3,513
Total pipe, feet, 211,597.....	miles 40.56
The above does not include the pipe in the radiators.	
Lubricating oil, gallons.....	896½
Kerosene, gallons.....	736
Tallow, pounds.....	3,191½
Turpentine, gallons.....	482
Linseed oil, gallons.....	1,193½
Hard oil, gallons.....	482
Gold leaf, packs.....	868

Gold leaf size, pounds.....	50
White lead, pounds.....	27,968
Red lead, pounds.....	4,507
Plastering hair, bushels.....	1,740
Glass—	
Wrought plate, square feet.....	1,601
Polished plate, square feet.....	22,188 11-12
Polished plate, beveled, square feet.....	66 3-4
Polished plate, enameled, square feet.....	1,785 6-12
Polished plate, silvered, square feet.....	607 1-6
Stained glass, square feet.....	1,183 1-4
Cylinder glass, square feet.....	1,001
Vault doors.....	12
Encaustic tile floors, square feet.....	43,153 1-6
Marble tile floors, square feet.....	5,227
Glue stucco.....	9,157

CLASSIFIED STATEMENT OF EXPENDITURES FROM MAY 25,
1870 TO JUNE 30, 1886.

ON WHAT ACCOUNT	AMOUNT.
Excavation and drainage.....	\$ 17,978.87
Cistern.....	1,512.12
Repairs, first foundation.....	52,343.75
Concrete, labor on.....	9,093.71
Printing and advertising.....	3,205.26
Water.....	3,579.84
Cash.....	1,612.54
Board of commissioners.....	24,683.15
Cast iron work.....	6,057.05
Rubbing stone.....	26,115.56
Accidents.....	990.72
Extra handling stone.....	2,244.46
Stone-setting and masonry.....	69,575.81
Paints and oils.....	8,721.26
Roofing and guttering.....	95,160.20
Terra cotta work.....	3,700.04
Lot and sewer.....	10,000.00
Machinery and tools.....	34,343.22
Heating and ventilating.....	81,453.32
Painting.....	36,752.06
Railroad.....	16,458.63
Fuel.....	8,053.67
Cleaning and painting.....	236.77
Glass.....	26,843.87
Marble work.....	117,097.47
Plumbing.....	14,580.99

ON WHAT ACCOUNT.	AMOUNT.
Stone.....	486,417.56
Boiler-house.....	25,844.19
Nails and hardware.....	15,365.82
Stone cutting.....	342,138.07
Wrought iron work.....	187,603.24
Gas fitting.....	848.91
General labor.....	54,915.43
Cement.....	49,733.17
Brick.....	127,565.79
Sand.....	8,624.00
Sheet metal work.....	21,020.78
Prismatic lights.....	3,082.23
Plain plastering.....	45,616.52
Scagliola work.....	13,934.85
Ornamental plastering.....	29,258.05
Electric work.....	5,945.85
Interest and discount.....	3,155.20
Fresco painting.....	28,077.37
Floor tiling.....	34,485.58
Heating expenses.....	10,989.91
Plans.....	8,784.13
Furniture.....	129,131.77
Patterns and models.....	7,868.75
Brick masonry.....	122,030.36
Extra general assembly.....	208.55
Salaries.....	139,829.82
Adjutant-General's office.....	3,021.01
Capitol grounds.....	1,021.01
Expenses.....	4,982.73
Lime.....	7,863.33
Carpenter work.....	177,422.75
Lumber and timber.....	64,530.65
Elevators.....	7,636.58
Street improvements.....	24,994.59
Governor's settlement account.....	55.00
Total.....	\$ 2,873,294.59

CONDENSED STATEMENT OF APPROPRIATIONS AND
EXPENDITURES.

APPROPRIATIONS.	
Chapter 110, laws of the Thirteenth General Assembly.....	\$ 150,000.00
Chapter 35, of the general and public laws of the Fourteenth assembly, being \$100,000 for the year 1872, and \$122,000 for each of the years 1873, 1874, 1875, 1876, 1877, 1878, 1879, 1880, 1881, 1882.....	1,350,000.00

Chapter 68, laws of the Fifteenth General Assembly	135,000.00
Chapter 151, laws of the Sixteenth General Assembly.....	250,000.00
Chapter 138, laws of the Seventeenth General Assembly.....	75,000.00
Chapter 138, laws of the Seventeenth General Assembly for lot and sewer.....	10,000.00
Chapter 83, laws of the Nineteenth General Assembly.....	525,000.00
Chapter 136, laws of the Twentieth General Assembly.....	361,000.00
Chapter 136, laws of the Twentieth General Assembly, for paving and curbing the streets and putting down sidewalks around the Capitol Square.....	27,000.90

SPECIAL APPROPRIATIONS.

Chapter 75, section 32, laws of the Fifteenth General Assembly.....	600.00
Chapter 142, section 19, laws of the Sixteenth General Assembly.....	600.00
Chapter 170, section 20, laws of the Seventeenth General Assembly.....	600.00

Total..... \$ 2,876,300.00

EXPENDITURES.

Expended on new capitol.....	\$ 2,624,189.48
Expended on repairs of first foundation....	52,343.76
Expended on lot and sewer.....	10,000.00
Expended on boiler house.....	25,844.00
Expended on furniture.....	129,131.77
Expended for Twentieth General Assembly..	208.55
Expended for adjutant-general's office.....	3,021.01
Expended on capitol grounds.....	1,883.70
Expended on street improvements	24,994.59
Expended on governor's settlement account..	55.00

Cash unexpended and turned over to Governor William Larrabee.....	\$ 1,612.54
Street paving and sidewalk appropriation in the state treasury undrawn.....	3,005.41

Total..... \$ 2,876,300.00

GOVERNOR'S SQUARE.

Containing 5.61 acres, deeded by T. K. Brooks and W. A. Scott, April 27, 1856; also lot A, Stewart's addition, according

to the plat, adjoining the square, of about one-half acre, deeded by J. B. Stewart, March 5, 1858. On this piece of ground there is no improvement, but the natural growth of timber is on it yet.

ASYLUM SQUARE OR STATE SQUARE.

Containing about 2.25 acres, deeded by J. B. Stewart, January 9, 1858. There is no building on this piece of ground.

MONUMENT.

This ground was occupied by the old state house, now by the soldiers' and sailors' monument, described as lots 11 and 12, block 6, Scott's addition, deeded by the Capitol Building association, October 24, 1864. There is built on the ground and completed the soldiers' and sailors' monument, and the grounds are all sodded and finished. The shaft is all of gray granite, ornamented by bronze castings. The total height is about 145 feet, and the total cost was about \$150,000.

CAPITOL HEATING HOUSE.

Lot 3, block 4, H. Lyon's addition to the town of Des Moines, deeded by Ed Wright, widower, April 5, 1878, the consideration being paid by the capitol commission, \$1,408.50.

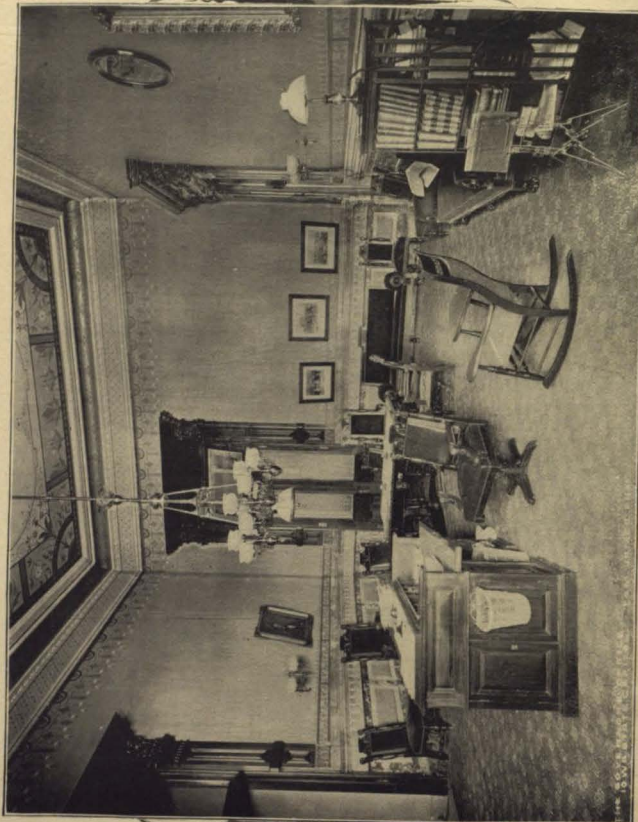
Lot 4, block 7, Lyon's addition to the city of Des Moines, deeded by John M. Day and Jennie E. Day, his wife, June 17, 1880, consideration, \$1,720.

The ground was bought in order to have the heating apparatus, with its coal and ash dust and smoke, out of the capitol. There is located in the building occupying this ground a battery of seven boilers, each sixteen feet long and sixty inches in diameter, which will consume over thirty tons of coal per day in extreme cold weather to heat the capitol and make all rooms comfortable.

GROUND NORTH OF HEATING PLANT.

Lots 9 and 10, block 4, of H. Lyon's addition to Des Moines, executor's deed, John V. Wise, executor for the heirs of John H. Wise, the consideration being \$2,750, deeded April 23, 1894. These lots were badly needed to dispose of all the ashes from the heating plant and refuse from the capitol. Of course only the back part of the grounds is used for such purpose, so that the front part of the lots might be put to some other use.

Governor's Private Office.



GROUND EAST OF THE CAPITOL.

Lots 1 and 2, block 7, of Scott's addition to the town of Des Moines, deeded by Flora Wright, June 9, 1897, to the state of Iowa, the consideration being \$4,300. This piece of ground is located east from the capitol. This would be well adapted for the site of a state arsenal, as it is in near location to the capitol, and also to the heating plant, so that it would not be necessary to provide boilers, for such a building could easily be heated from the capitol boiler house. But the general assembly should provide more of the adjoining ground for the site of an arsenal, as a building such as that department needs would occupy nearly all the ground, and would not appear well as a public building, and in front of the capitol.

HISTORICAL BUILDING.

The ground where one wing of the historical building is now erected occupies lots 1-5, of block 5, H. Lyon's addition to the town of Des Moines, and was bought from Eliza Jane Lyon, the purchase price being \$15,000. The west wing of the building is now completed.

Section 151 of the code contains a provision making it the duty of this office to take an inventory of all furniture, materials and tools in the capitol. I have, during December, 1901, made a careful invoice of the furniture in the capitol, historical building and boiler house, including all furniture which is in use by the offices outside the building.

Whenever possible, I have given in this invoice the purchase price of all furniture, but where such was not attainable I have estimated the same as nearly as possible in comparison with other furniture in the building.

I find the total value of the same is \$59,666.11 against a value two years ago of \$54,837.55, an increase of \$4,828.56, accounted for by additional furniture in the various offices. The invoice of all material and tools on hand is \$2,636.92, against \$2,281.41 two years ago, an increase of \$355.51.

RECOMMENDATIONS.

It is the duty of this office to report the conditions and needed repairs of the public buildings at the seat of government, but as the Twenty-eighth General Assembly created a special commission for improvement of the capitol building and grounds, the

report of which has been filed, but has not been published, I do not deem it necessary to make further recommendation in reference to said repairs; in fact, their report will cover fully all work needed in that line.

I further would recommend the donation of a forty-foot strip of ground running east and west on the south side of the governor's square, for the use of a public street, said improvements made without expense to the state.

The walk on the north side of the state square has been removed by the city and put to grade, and the city has ordered a brick or cement walk, also the walk on the west side of said square is in very bad condition and should be replaced with a new one. I therefore would recommend the Twenty-ninth General Assembly to make an appropriation sufficient to cover the expenses of building those walks.

To keep a better and closer watch over the entire capitol building, to my opinion, the night watchmen when not on duty, should be permitted to sleep in the building during the night, enabling both men to be here in case of an accident where it requires more than a single man to protect the state's property. I would also suggest that some system would be adopted which would require the night watchman while on duty, to report hourly by telephone to the central telephone office, or by placing watchmen's clocks in different places in the building.

This office is very much crippled in the service of the state in not having a contingent fund for extra labor. The walks around the capitol and other state property have to be kept clean from snow and ice in the winter months, and needs some little repairs in summer. During state fair, or other occasions of large numbers of people being in Des Moines, there should be extra guides and police in the capitol. I, therefore, recommend an appropriation of \$250 per annum for extra labor.

To better reach the soldiers' and sailors' monument, there should be a cement walk built from the south steps of the capitol to Walnut street, and from Walnut street to the monument. As it now is, the visitors will walk across the lawn and flower beds. I would therefore recommend the building of such walk and an appropriation of \$500, or as much as needed thereof, to make that improvement.

It will be observed that the total expense for the period covered by this report is \$3,876.10 greater than for the last biennial period. This increase may be explained by the fact that there



Supreme Court Chamber.

have been added to the force two janitors at \$55 per month, and a janitress of the ladies' toilet room at a like salary; that the heating of the historical building has required an additional fireman at \$60 per month, and that water, gas and repairs for the historical building appear as part of the expenses.

In conclusion, I desire to tender my sincere thanks to all departments for the uniform assistance and continued courtesy extended to me during the time I have had charge of the capitol, and to testify to the ability and uniform fidelity of those I have had under my charge in the employment of the state as assistants, and to thank them for the faithful manner in which they have discharged the several duties assigned them. I believe their remuneration for the service performed is hardly sufficient to support their families, as, with increased prosperity of the whole country, the necessities of life have also advanced in price while that of the faithful employes of the state have not.

J. D. MCGARRAUGH,

Custodian of Public Buildings and Property.

I, J. D. McGarraugh, as custodian of public buildings and property, being duly sworn, do hereby depose and say that these reports of expenses incurred, with the laws in force as given in each statement during the years 1900 and 1901, are correct to the best of my knowledge and belief.

J. D. MCGARRAUGH,

Custodian of Public Buildings and Property.

Subscribed and sworn to before me by J. D. McGarraugh, this _____ of _____, 1902.

H. M. JONES,

Deputy Clerk Supreme Court, Iowa.

EXHIBIT A.

Itemized statement of all expenditures made by the Custodian of Public Buildings and Property, in accordance with chapter 6, section 150 of the Code, from January 1, 1900, to December 31, 1901:

Labor, police, 24 months, \$75.00	\$ 1,800.00
engineer, 24 months, \$100.00	2,400.00
carpenter, 24 months, \$83.33 1/3	\$ 2,000.00
8 1/2 hours, 30 cents	24.30
	\$ 2,024.30
night watch, capitol, 48 months, \$75.00	\$ 3,600.00
1 night watch, historical, 71 nights, \$2.00	142.00
historical, 30 days, 2.00	60.00
	\$ 3,802.00

Floor, janitor, 120 months, \$55.00	\$ 6,600.00
46 months, 55.00	2,530.00
24 months, 50.00	1,200.00
22 days, \$1.85	40.70
31 days, 1.77	54.87
	\$ 10,425.57
elevator tender, 24 months, \$50.00	\$ 1,200.00
Labor, moving, 46 days and 8 hours, \$2.00	93.78
carpenter, moving, 20 days and 8 hours, 30 cents an hour	54.00
teamster, moving, 6 days and 5 hours, \$3.00 per day	19.67
watchman, moving, 3 days and nights, \$2.50	7.50
	\$ 174.95
cleaning walks, one-half day, \$1.50 per day75
54 days, \$1.75	\$ 89.20
78 hours, 20 cents	15.60
6 hours at 10 cents60
20 1/2 hours with a team, 50 cents	10.25
	\$ 115.65
plowing snow, 2 hours, 50 cents per hour	1.00
laborers in yard, 7 months at \$55.00 per month	\$ 385.00
44 days, \$1.83 per day	80.52
	\$ 465.52
9 months, \$55.00 per month	495.00
3 months, 55.00 per month	165.00
9 months, 55.00 per month	495.00
5 months, 55.00 per month	275.00
washing towels, 142 1/2 dozen, 35 cents	49.87
41 1-6 dozen, 40 cents	\$ 16.40
36 1/2 dozen, 35 cents	12.77
	\$ 29.17
57 1/2 dozen, 40 cents	22.99
36 1/2 dozen, 40 cents	14.70
61 dozen, 40 cents	24.40
139 1/4 dozen, 40 cents	55.30
149 dozen, 40 cents	59.60
123 5-12 dozen, 40 cents	49.36
making 6 dozen towels, 40 cents per dozen	2.40
	\$ 6,160.00
office janitors, 112 months, \$55.00	\$ 6,160.00
30 days, \$1.83	54.90
	\$ 6,214.90
janitors, 3 months, \$55.00	165.00
janitress, 18 months, \$55.00	\$ 990.00
janitress, 2 months, 50.00	100.00
24 days, \$1.25	30.60
	\$ 1,129.60
Firemen, 118 months, \$60.00	\$ 7,080.00
265 days, \$2.00	530.00
	\$ 7,610.00
Yardmen, 9 months, \$55.00	\$ 495.00
9 months, \$55.00	495.00
	\$ 990.00
Typewriting custodian's report	26.50
Hanging curtains	7.00
	\$ 39,490.53

Fuel, 460,550 lbs. nut, \$1.225.....	\$ 282.08	
2,077,850 lbs. slk., 80 cents.....	831.14	
6,000 lbs. M., \$1.00.....	3.00	
159,300 lbs. pea, 1.03.....	83.62	
1,695,350 lbs. nut, 2.25.....	1,029.39	
		\$ 1,947.15
642,300 lbs. slk., 80 cents.....	\$ 256.92	
11,300 lbs. nut, \$1.25.....	6.92	
137,150 lbs. lump, \$2.00.....	137.15	
		\$ 400.99
246,400 lbs. slk., 80 cents.....	98.48	
962,650 lbs. slk., 80 cents.....	385.06	
2,611,600 lbs. slk., 80 cents.....	\$ 1,044.64	
372,300 lbs. nut, \$1.225.....	228.03	
31,100 lbs. nut, \$1.40.....	21.77	
		\$ 1,294.44
98,000 lbs. slk., 80 cents.....	\$ 39.20	
103,400 lbs. slk., \$1.25.....	64.62	
		\$ 103.82
1,360,400 lbs. slk., \$1.25.....	850.25	
1,094,050 lbs. slk., 80 cents.....	437.62	
Total amount for fuel.....		\$ 5,799.89
Ice, 52,850 lbs., 7 cents.....		\$ 36.99
capitol, 52,350 lbs., 7 cents.....	\$ 36.58	
historical building, 2,350 lbs., 7 cents.....	1.64	
		\$ 38.22
capitol, 63,650 lbs., 7 cents.....	\$ 44.48	
historical building, 5,800 lbs., 7 cents.....	4.05	
		\$ 48.53
capitol, 30,200 lbs., 7 cents.....	\$ 21.14	
historical building, 2,600 lbs., 7 cents.....	1.96	
		\$ 23.10
capitol, 15,100 lbs., 7 cents.....	\$ 10.57	
historical building, 1,250 lbs., 7 cents.....	.87	
		\$ 11.44
capitol, 44,980 lbs., 7 cents.....	\$ 31.48	
historical building, 4,100 lbs., 7 cents.....	2.87	
		\$ 34.35
capitol, 70,700 lbs., 7 cents.....	\$ 49.48	
historical building, 6,350 lbs., 7 cents.....	4.43	
		\$ 53.91
Total amount for ice.....		\$ 256.44
Water, capitol, 227,150 feet, 75 cents.....	\$ 170.39	
capitol, meter rent.....	1.00	
capitol and historical building, 186,550 feet, at 75 cents.....	139.92	
capitol and historical building, meter rent.....	1.00	
arsenal, meter rent.....	.50	
arsenal, minimum.....	2.00	
historical building, 6,280 feet, \$2.25.....	14.14	
meter rent.....	.50	
arsenal meter and minimum.....	2.50	
capitol and historical building, 181,620 feet, 75 cents.....	136.21	
capitol and historical building, 183,470 feet, 75 cents.....	137.61	
meter rent.....	1.00	
grounds, 22,320 feet, 75 cents.....	16.74	
meter rent.....	.67	
arsenal, minimum.....	2.00	
meter rent.....	.50	

capitol and historical building, 182,570 feet.....	\$ 168.24	
meter rent.....	1.00	
grounds, 41,010 feet, at \$1.50.....	61.52	
arsenal, meter rent and minimum.....	5.00	
arsenal, 780 feet at \$2.25.....	2.43	
arsenal and capitol and historical building, meter rent, \$1.50..	1.50	
grounds, 23,760 feet at 75 cents.....	17.82	
capitol and historical building, 202,610 feet, at 75 cents.....	151.95	
capitol and historical building, 181,620 feet, at 75 cents.....	136.21	
meter rent.....	1.00	
		\$ 137.21
yard, 770 feet, at \$2.25.....	\$ 1.75	
11,570 feet, at \$1.50.....	17.38	
meter rent, second and third quarters.....	2.00	
		\$ 21.13
capitol and historical building, 323,800 feet, at 75 cents.....	\$2 42.84	
capitol and historical building, meter rent.....	1.00	
grounds, 290,510 feet, at 75 cents.....	217.88	
meter rent.....	1.00	
arsenal, minimum.....	2.00	
arsenal, meter rent.....	.50	
		\$ 465.22
Total amount for water.....		\$ 1,753.00
Gas, 2,212,500 ft., \$1.20.....		2,634.60
Lighting and electrical supplies:		
6 portable lamps, library.....	\$ 41.10	
1 portable lamp, supreme judges.....	7.00	
200 zincs.....	6.00	
24 LaClambe cells.....	8.40	
36 LaClambe cups.....	7.92	
18 push buttons.....	2.58	
1 annunciator.....	8.75	
1 case matches.....	4.25	
No. 6, lb. bichromate potash.....	.68	
No. 10, lb. sulphuric acid.....	.70	
50 mantels.....	8.00	
50 mantels, mounted.....	14.00	
6 gas chimneys.....	.75	
2 doz. lantern globes.....	1.00	
		\$ 111.13
12 doz. mica chimneys.....	\$ 25.92	
9 gas lights.....	7.00	
14 boxes wax tapers.....	1.75	
36 Wellsbach lamps and shades, \$1.25.....	45.00	
24 Wellsbach lamps and shades, .85.....	20.40	
25 Wellsbach lamps, electric.....	30.00	
12 lamp frames, 25 cents.....	3.00	
50 mantles, 35 cents.....	17.50	
286 mantles, 25 cents.....	71.50	
50 mantles, 16½ cents.....	8.25	
36 shades, 15 cents.....	5.40	
12 shades, 40 cents.....	4.80	
12 shades, 50 cents.....	6.00	
1 case matches.....	4.25	
50 gal. kerosene.....	5.00	
1 doz. lamp wicks.....	.07	
110 feet elevator tube.....	27.50	
		\$ 283.34

Lighting and electrical supplies—Continued.

50 gal. Perfection oil.....	\$	4.25	
100 mantles.....		16.00	
100 mantles, mounted.....		28.00	
48 8 inch shades.....		4.80	
36 10 inch shades.....		9.00	
100 boxes, wax tapers.....		4.50	
72 mica chimneys.....		9.00	
12 large glass chimneys.....		1.20	
24 lamps, complete.....		28.80	
	\$		105.55
50 mantles.....	\$	8.00	
3 doz. lamp wicks.....		.25	8.25
	\$		16.50
100 mantles.....			
1 box matches.....		.03	
50 mantles.....		8.25	
6 lengths of tubing.....		6.00	
	\$		14.28
9 taper holders, \$1.50.....	\$	13.50	
6 boxes tapers, 8 cents.....		.46	
22 8 inch shades.....		3.00	
1 case matches.....		4.25	
1 box candles.....		3.40	
5 doz. mica chimneys, \$1.50.....		7.50	
50 mantles.....		8.25	
24 mantles.....		8.40	
50 gal. coal oil.....		5.00	
1 doz. lantern globes.....		1.00	
4 gas fixtures.....		10.00	
			64.76
Total amount for lighting.....	\$		603.81

Supplies drawn from the supply department:

Cleaning.....			
2 blankets, \$1.20.....	\$	2.40	
7 feather dusters.....		5.88	
6 cans Burnishine, 25 cents.....		1.50	
17 cakes Sapolio, 6 cents.....		1.02	
48 cakes Doll soap, 2 cents.....		.96	
6 cakes Ivory soap, 7 cents.....		.42	
13 boxes toilet soap, 24 cents.....		3.12	
1 box toilet soap.....		.40	
1 pail.....		1.17	
1 floor rubber.....		.48	
1 tumbler.....		.03	
10 brooms, 21 cents.....		2.69	
7 mop holders, 7 cents.....		.48	
6 scrub brushes, 8½ cents.....		.50	
10 yards cheesecloth, 4 cents.....		.40	
1 pint ammonia.....		.14	
18 balls twine.....		1.44	
4 sponges.....		1.90	
4 mop wringers.....		8.00	
500 pounds soft soap.....		25.00	
	\$		67.39
4 window rubbers, 20 cents.....	\$.80	
2 window brushes, 38 cents.....		.76	
7 quarts Pearlina, 50 cents.....		3.50	
2 sponges, 49 cents.....		.98	
5 sponges, 50 cents.....		2.50	
6 brooms, 27 cents.....		1.62	



Grand Stairway.

1 box roach paste.....	\$.13
1 feather duster.....		.84
1 bucket.....		1.20
2 pints ammonia, 9 cents.....		.18
1 floor brush.....		4.00
1 floor brush.....		2.21
1 mop stick.....		.07
1 dust pan.....		.16
1 hair brush.....		.84
9 scrub brushes.....		.75
1 pound moth balls.....		.04
30 Doll soap.....		.60
32 boxes toilet soap.....		5.50
2 pails, 10 cents.....		.38
3 H. & H.....		.30
25 Sapollo, 6 cents.....		1.50
1 chamois skin.....		.39
3 yards cheesecloth 4 cents.....		.12
20 rubber tires, 12½ cents.....		2.50

2 boxes soap, 16 cents.....	\$.32	35.37
9 boxes soap, 24 cents.....		2.10	
1 box soap.....		.49	
41 bars soap, 2 cents.....		.82	
24 bars soap.....		1.77	
5 bars sapollo, 6 cents.....		.30	
5½ pairs blankets, \$1 20.....		6.60	
7 sponges, 49 cents.....		3.43	
1 floor rubber.....		.50	
3 window rubbers, 20 cents.....		.60	
1 window brush.....		.38	
2 boxes blacking.....		.20	
2 pails.....		1.80	
5 feather dusters, 84 cents.....		4.20	
1 comb.....		.15	
12 scrub brushes, 8½ cents.....		1.00	
15 cans Burnishine, 25 cents.....		3.74	
1 mop stick.....		.07	
1 tile brush.....		4.00	
2 dust pans, 20 cents.....		.40	
repairing water cooler.....		.25	
2 bottles library paste.....		.34	
9 tin cups.....		.19	
1 box roach paste.....		.13	

1 tile brush.....	\$	4.00	33.85
4 pails, 63 cents.....		2.52	
1 pail.....		1.17	
1 pail.....		.19	
1 chamois skin.....		.39	
11 yards cheesecloth, 4 cents.....		.44	
4 cans Burnishine, 25 cents.....		1.00	
1½ pint ammonia.....		.11	
1 ball twine.....		.15	
1 pound moth balls.....		.04	
1 dust pan.....		.16	
1 comb.....		.17	
1 scissors.....		.84	
2 floor rubbers, 48 cents.....		.96	
1 window rubber.....		.20	
3 tin cups, 2 cents.....		.06	

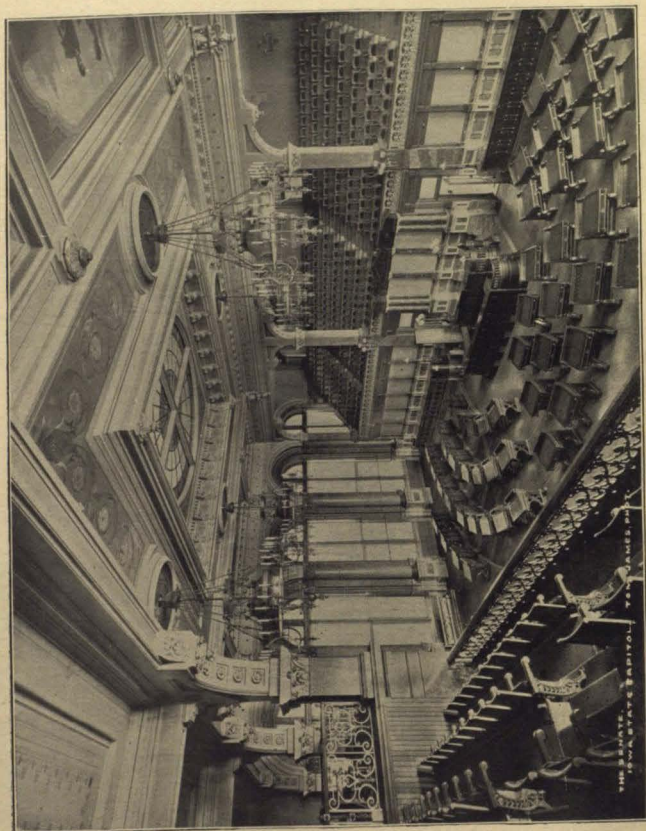
Supplies Drawn—Continued.

2 glasses, 5 cents.....	\$.10	
1 box soap43	
3 boxes soap, 40 cents.....		1.20	
5 boxes soap		1.25	
12 boxes soap, 24 cents.....		2.88	
42 cakes soap, 2 cents.....		.84	
2 packages Sapolio, 6 cents.....		.12	
6 scrub brushes, 8¼ cents50	
5 sponges, 49 cents.....		2.45	
1 whisk broom.....		.21	
4 prs. blankets.....		4.80	
4 dusters, 84 cents.....		3.36	
2 brooms, 27 cents.....		.54	
	\$		31.03
20 brooms.....	\$	4.48	
5 cases Burnishine.....		1.25	
15 scrub brushes		1.25	
10 feather dusters.....		5.34	
33 yards, cheesecloth.....		1.32	
7 blankets.....		8.40	
2 floor brushes.....		6.21	
4 floor brushes		2.27	
2 window rubbers.....		.40	
5 lanterns		8.53	
9 pails.....		7.85	
1 counter duster32	
113 bars soap.....		6.04	
1 bar H. & H.....		.11	
8 mop holders67	
10 sponges.....		4.54	
5 cloth baskets.....		5.45	
5 dust pans.....		.60	
2 carpet sweepers		8.50	
1 key chain.....		.07	
1 hair brush.....		.80	
	\$		74.40
925 6-10 pounds sovogram, 7 cents.....	\$	64.69	
265 pounds soft soap, 7 cents		18.55	
24 bars Doll soap, 2 cents.....		.48	
60 bars Cream soap, 64 cents dozen		3.20	
24 bars Ivory soap, 81 cents.....		1.62	
8 bars H. and H.....		.85	
16 boxes Pearline, 6 cents.....		.96	
8 cans Burnishine, 25 cents		2.00	
9 tin cups.....		.18	
1 comb15	
1 pair shears44	
1 chamois skin39	
1 terrace pin07	
1 key chain.....		.07	
1 waste basket.....		1.09	
2 dust pans.....		.40	
1 floor rubber50	
7 yards cheesecloth, 4 cents28	
10 sponges		4.80	
9 brooms, 21 cents		1.89	
4 feather dusters, 84 cents		3.36	
1 counter duster.....		.32	
19 brush holders		1.57	

1 blanket.....	\$	1.20	
repairing two water coolers.....		.50	
	\$		109.56
7 pounds moth balls.....	\$.32	
5 pair blankets		6.00	
12 yards cheesecloth49	
11 mop and brush holders.....		.68	
3 balls twine19	
9 scrub brushes75	
1 window brush38	
2 whitewash brushes.....		2.60	
1 window cleaner.....		.16	
1 box roach paste17	
6 feather dusters.....		3.03	
2 floor rubbers96	
1 pair shears47	
6 cuspidors.....		1.75	
1 comb10	
1 hair brush.....		.53	
48 bars laundry soap.....		.96	
25 boxes toilet soap		6.05	
6 bars H. & H.....		.66	
24 bars Sapolio.....		1.44	
6 pints Burnishine		1.50	
11 sponges.....		6.86	
2 dust pans.....		.32	
4 galvanized buckets.....		.76	
8 brooms		2.16	
	\$		39.29
General Assembly, 6 soap dishes.....	\$.90	
3 water pitchers.....		.75	
30 water glasses.....		.91	
2 dust pans.....		.25	
4 sponges		1.28	
5 mop sticks.....		.35	
19 yards cheesecloth.....		.76	
2 feather dusters.....		1.00	
5 water buckets.....		3.15	
2 blankets.....		2.40	
62 waste baskets.....		32.95	
24 cuspidors		9.25	
7 hair brushes.....		6.22	
5 combs75	
22 whisk brooms		3.25	
1 broom25	
3 cakes Sapolio18	
14 ¼ dozen soap.....		7.06	
14 boxes of matches.....		4.67	
2 ink cans		2.00	
1 floor brush.....		2.21	
2 counter dusters.....		.64	
3 tin cups.....		.06	
3 dozen key rings63	
	\$		81.97
Engineer's supplies, 1 14 inch tee.....	\$	18.00	
13 feet 10¼ inch 14-inch pipe, including threads..		51.24	
16 Bashlin valves.....		48.68	
8 stop cocks and valves.....		5.48	
202 feet ½-inch pipe.....		7.28	
92 pipe fittings		10.25	
	\$		130.93

Engineer's supplies—Continued.

1 dozen thermometers	\$.96	
6 4-inch nipples		3.42	
25 lbs. paste50	
3 brooms63	
1 dozen key blanks		1.80	
11½ lbs. solder, 25c.		2.88	
4 valve rods	}	36.00	
4 piston rods			
4 piston rings			
225½-ft. tiller rope		22.44	
1 8-inch wheel		1.00	
			\$ 69.63
Doors & lumber for engineer & carpenter shop.	\$	153.62	
Lumber for general repairs		10.62	
Hardware for engineer and carpenter shop		29.58	
2 windows for boiler house		9.50	
			\$ 194.32
14-inch ferrule, 1 ½-inch strap			
2 ½ solder nipples	\$	1.30	
6 1-inch plugs30	
250 feet ¾-inch tiller rope		19.06	
4 ¾-inch radiator valves		4.34	
35 1¼-inch stair rail fittings		4.93	
1 ¾-inch gas cock, 25c.; 1 gas stove canopy, \$4.50		4.75	
1 soldering iron heater		3.50	
			\$ 38.18
175 pounds lead	\$	11.55	
5 gallons oil		3.65	
			\$ 15.20
3 flue stops	\$.23	
12 coat hooks45	
1 knob20	
10 locks		11.00	
10 butts		4.40	
10 butts		1.05	
9 transom lifters		2.25	
10 sash locks		1.00	
			\$ 20.58
20 feet 4-ply steam hose and coupling, 33 cents...	\$	6.98	
2 ½ stop cocks		1.03	
12 ¼ R. & L. couplings40	
2 saw blades for lock springs		1.15	
2 pounds sheet brass for keys80	
59½ pounds paste, 2 cents		1.19	
52¼ pounds Garlock spiral, 65 cents		33.96	
40 pounds rainbow, 45 cents		18.00	
2 barrels Portland cement, \$3.75		7.50	
			\$ 71.01
Edison album and charts	\$	9.50	
52 gallons linseed oil		33.28	
1 barrel cement		3.75	
36 hand hole bolts		9.00	
2 calking tools90	
2000 fire brick		52.00	
19 dozen key blanks		13.30	
1 hand saw		1.28	



Senate Chamber.

1 screw plate	\$	9.00
300 1/4-inch bolts,...		1.10
50 pounds iron.....		1.50
8 fire tongs		5.40
5 hammer handles20
1 expansive bit.....		1.00
1 brace		1.35
12 file handles.....		.24
2 pick handles20
2 pipe cutters		2.50
12 coal shovels and scoops.....		8.05
2 Maydole hammers70
1 dozen files75
1 blow torch.....		2.50
2 mortar trowels.....		.90
2 monkey wrenches.....		2.85
4 Stillson wrenches		10.27
2 glass cutters.....		.40
1 hack saw frame.....		.50
168 3-16 bolts.....		.65
24 stop cocks.....		10.62
6 check valves.....		9.66
24 angle valves.....		26.10
24 Jenkins valves.....		25.62
12 Globe valves.....		10.80
1 pipe vise		2.25
1 flue blower and steam hose.....		15.85
3 round nose chisels		1.05
18 bibs		18.85
100 bib washers.....		.50
20 Fuller balls		1.00
25 gallons cylinder oil.....		8.75
25 gallons machine oil.....		3.92
246 pounds waste		15.99
800 pounds fire clay		4.00
1,853 feet pipe, various sizes.....		112.89
701 feet pipe covering.....		138.34
2 thermometers		27.75
30 pounds packing		28.20
4 cans paint80
8 1/2 pounds Venetian red.....		.25
24 rubber connections for closets.....		9.00
22 1/2 pounds paste.....		.45
144 tees, various sizes		5.73
150 ells, various sizes		4.99
30 couplings, various sizes.....		4.21
12 plugs, various sizes48
6 caps, various sizes.....		.60
18 unions, various sizes.....		6.42
18 return bends, various sizes		1.17
30 bushings, various sizes92
42 reducers, various sizes.....		2.04
<hr/>		
38 9-16 garlocks, 65 cents	\$	25.06
60 water gauge washers.....		1.25
600 pounds fire clay, 3/4 cents		3.75
7 1/2-inch stop cocks, 50 cents.....		3.50
7 3/4-inch stop cocks, 74 cents.....		5.18
12 2 1/2x2 reducing couplings, 22 1/2 cents.....		2.70
12 2x1 1/2 reducing couplings, 12 1/4 cents.....		1.47
5 gallons gasoline, 12 cents.....		.60
8 1/4 lbs. valve leathers 55 cents		4.67
<hr/>		
	\$	664.97
<hr/>		
	\$	48.18

Engineer's supplies—Continued.

2 drills	\$.40	
1 tap35	
1 radiator wrench	2.00	
Feed pump repairs	1.50	
1,900 feet pipe covering, ½-inch to 1½-inch	399.71	
Hauling pipe covering	2.50	
1 closet plunger	2.85	
Bib screws	1.70	
11 floor plates	1.10	
24 lamps	24.00	
100 mantles	16.50	
60 mica chimneys	7.50	
1 ¾-inch check valve	\$.63	\$ 442.11
1 ½-inch pop valve	3.34	
12 1-inch plugs18	

Total amount engineer's

Carpenter's supplies, 1 roll picture cord	\$.25	
1 can glue40	
1 pint alcohol34	

1 automatic drill	\$.85	\$.99
12 pair brass butts54	
2 putty knives26	
1 miter box	9.09	
1 grindstone	3.45	
2 gross swivel snaps	13.20	
1 can glue30	
3 gem castors60	
1,500 brass tacks75	
10 balls Martin	1.50	
10 packages tacks80	
4 packages webbing	5.00	
32 shades	52.62	
3½ yards imitation leather	1.75	
2 pounds shellac90	
1 dozen drawer locks	6.00	
½ dozen picture hooks05	
2 gross brass screws	1.60	
100 feet poplar	5.00	
305 pound nails, different sizes	9.44	
2 papers clout nails14	
58 papers tacks	1.07	
9 pieces plate glass	222.10	

1 can glue	\$.66	\$336.72
5½ yards linoleum	8.80	
250 feet leather, 25 cents	57.50	
250 yards gimp, 1½ cents	3.75	
4 packages webbing, \$1.25	5.00	
6 pounds marlin, 23 cents	1.38	
5,000 leather nails, \$1.35	6.75	
9 pounds tacks90	
25 pounds cotton batting, 9 cents	2.25	
6 papers tacks15	
2 pieces glass, \$5.05	10.10	

\$ 97.24

3 paint brushes	\$ 2.59	
1 transom, horticultural room	20.00	
5 chair bases governor's rooms	15.75	
Desk cloth, horticultural room	1.15	
Leather and upholstering material	207.05	

4½ pounds sash cord	\$ 1.25	\$ 306.54
1 glass25	
½ gallon paint75	

\$ 2.28

1 lock, butts, and one dozen hooks	\$ 1.90	
2 door bolts25	
1 curtain rollers	1.00	
Hauling lumber	1.50	
Planing sash weight	1.20	
3 pair shelf brackets75	
11 papers brads52	
6 papers clout nails18	
6 papers gimp tacks12	
64 gross wood screws	10.37	
10 quire sandpaper	1.20	
13 paint brushes	3.63	
100 pounds putty	2.50	
20 pounds yellow ochre30	
10 pounds brown umber35	
200 pounds white lead	13.00	
300 pounds mineral red in oil	12.00	
25 pounds ochre	1.25	
10 pounds drop black85	
10 pounds chrome yellow	1.60	
6 pounds wood filler96	
1 pound powdered pumice05	
10 pounds cabinet glue	1.65	
3 gallons varnish	5.49	
2 gross screw eyes, hooks, and screw hooks28	
600 feet ¼ copper sash cord	48.00	
90 pieces glass	39.10	
2 gross tinned rings	1.20	
7 sets castors	3.20	
2 plain bits50	
53 lbs. halyard	13.25	
2 gross swivel snaps	12.00	
1 Goodell hand drill	1.75	
1 can glue40	
1 sofa seat upholstered	8.50	
6 perforated seats	18.00	
25 lbs. cotton batting	2.25	
575 yards cord	7.19	
26 chair bases	164.00	
1 can glue66	
1 brush75	
1 brush53	

\$ 383.67

Total amount carpenter's supplies	\$ 1,129.44
54 twist drills	\$ 19.10
16 chisels and points	2.12
5 gas plyers	2.05
28 ½ lb. springs brass wire	6.08
1 drill chuck95

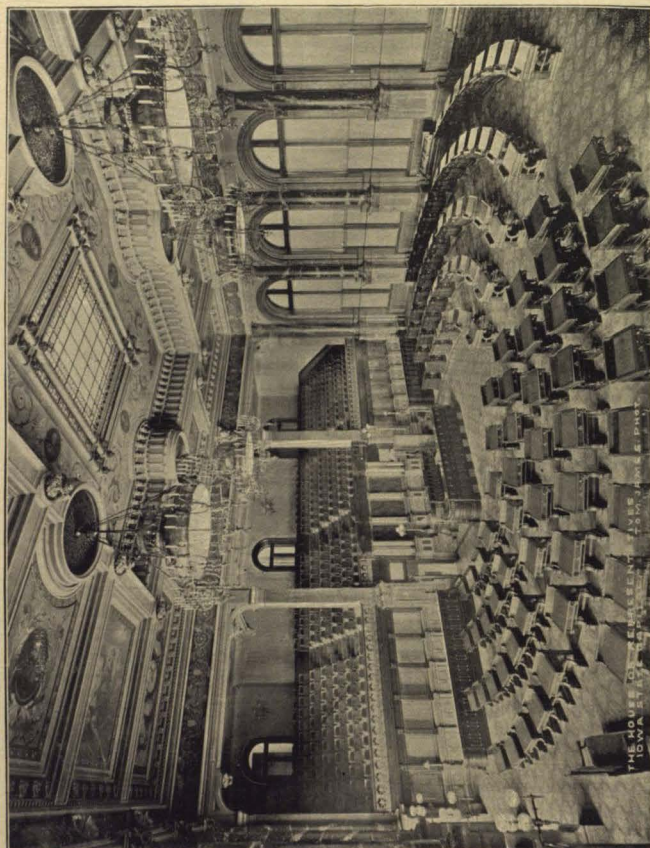
Carpenter's supplies—Continued.

12 lbs. emery.....	\$.85
2 hand vise.....	.85
1 pair snips.....	1.95
7 sledge and hammer handles.....	1.36
3 hatchets.....	.96
3 machinists and engineer's hammers.....	1.33
2 mortar hoes.....	.92
6 dozen files and wood rasps.....	6.72
24 thermometers.....	2.50
4 monkey wrenches.....	2.24
2 Stillson wrenches.....	1.50
1 crowbar.....	.40
3 back saw blades.....	.18
4 Diston saw blades.....	.48
9 dozen carriage bolts.....	.68
16 dozen stove bolts.....	.64
300 feet pearl wire cloth.....	7.50
2 oil tanks.....	8.50
2700 tiles for floor.....	75.00
1570 feet pipe covering.....	340.20
3 barrels cement.....	11.25
4½ lbs. leather.....	1.80
32 lbs. Garlock packing.....	21.95
1 blacksmith ferge.....	18.00
2 Iron wheelbarrow.....	10.00
4 screw drivers.....	2.00
4 reamers.....	1.40
1 chain lift.....	24.00
6 bushels lime.....	2.40
4 oil cans.....	2.00
3 Yale lock barrel and keys.....	12.50
20 lbs. iron.....	.50
2 Yale locks and keys.....	1.00
59 lbs. steel.....	5.90
75 feet pure rubber hose.....	11.00
1 set packing tools.....	4.50
20 sets Price balls and cushion.....	1.50
6 gas brackets, \$3.10, 7 wash basins, \$14.00.....	17.10
12 basin cooks, \$15.00, 25 lbs. tallow, \$2.50.....	17.50
3 plumbers' tridents.....	4.50
Lining 1 closet tank.....	3.50
11½ hours boiler repairs.....	5.75

Total amount..... \$ 575.81

Office supplies, 1½ quarts mucilage.....	\$.98
1 gross pins.....	.44
2 library pads.....	.34
10 pencil pads.....	.80
1 box envelopes.....	.40
1 memorandum.....	.15
1 box paper.....	.43
1 dauber.....	.08
1 brush.....	.52
½ dozen bottles of typewriter oil.....	.48
2 quarts ink.....	.60
2 boxes pencils.....	5.16
1 dozen pencils.....	.20
1 box blacking.....	.08
1 ink stand.....	.57
50 1 cent stamps.....	.50
200 2 cent stamps.....	4.00

\$ 15.71



House of Representatives.

1/4 dozen typewriter erasers, Board of Health	\$.30	
1 letter opener58	
1 gross steel pens65	
2 sponge holders70	
Custodian, 100 2 cent stamps		2.00	
25 1 cent stamps25	
500 2 cent stamps	\$	10.00	\$ 4.48
400 large envelopes90	
1 quart of ink30	
1 dozen pencils31	
10 pencil pads30	
1 box typewriter paper	\$.80	11.81
1,000 letter heads		1.71	
10 pencil pads60	
1 dozen pencils20	
1 eraser03	
1 box rubber bands52	3.34
10 pencil pads90	
1 box pens80	
1 dozen pencils20	
2 records40	
1 box paper75	
Carbon paper14	
1 box clips12	3.71
12 thumb tacks12	
3 journals60	
1 record23	
1 bottle paste22	
1 dozen pencils22	
1 terrace pin07	
1 can paste17	1.67
1 memorandum15	
1 memorandum12	
1 ledger23	
Total amount office supplies67
Yards, 3 1/4 pounds clover seed	\$	13.80	\$ 41.39
trees around Capitol Square		44.00	
2 sacks salt			57.80
4 lawn rakes		1.33	2.50
4 lawn rakes		1.60	
5 dozen washers for garden hose75	2.93
300 loads manure, \$1.00		300.00	
50 loads manure, 75 cents		37.50	
2 loads sand		2.00	
4 1/2 hours team, plowing snow		2.70	
1 spade, 65 cents; 2 shovels, \$1.30		1.95	

Yards, 3 grass hooks.....	\$.45	
43 snow shovels		7.68	
2 nozzles.....		.56	
3 lawn mowers with aprons.....		37.20	
400 feet $\frac{3}{4}$ -inch hose		40.00	
8 barrels salt.....		14.00	
500 feet $\frac{3}{4}$ -inch garden hose.....	\$	99.89	
5 pounds emery.....		62.50	
1 ton fertilizer.....		.75	
1 ton bone meal.....		40.00	
200 pounds fertilizer.....		35.00	
1 $1\frac{1}{2}$ -inch gouge.....		4.50	
45 bulbs, 13 cents.....		.75	
348 bulbs, 8 cents.....		5.40	
		27.84	
			114.24
5 pounds lawn seed.....		.80	
2 guages.....		1.00	
3 grass catchers.....		6.00	
2 garden rakes.....		.67	
			8.47
Total amount yard.....	\$		693.25
Carpenter's supplies, 1 can glue.....	\$.66	
3 Martin latches and 60 keys.....		6.75	
1 door spring.....		.20	
			7.61
Boiler and pipe repairs, 3 sets boiler flues, and 3 patches for boilers, including 1 $1\frac{1}{4}$ -inch cross, 2 P. 9 Unions, 2 9-inch threads.....	\$	812.80	
3 16-inch chain tongs.....		45.00	
1 1,000-inch chain lift.....		13.00	
8 hour boiler repairs and 2 ferules.....		3.70	
			874.50
Sink, sewer and water connections for lunch room.....	\$		30.00
Janitor's supplies, 2 window cleaners.....		.40	
8 pounds moth balls.....		1.20	
1 blanket.....		.48	
1 floor rubber.....		2.20	
3 feather dusters.....		.34	
2 boxes roach paste.....		.17	
4 yards muslin.....		2.68	
4 sponges.....		1.20	
20 Sapallo.....		2.72	
16 boxes soap.....		2.70	
10 brooms.....		.90	
9 H. & H.....		.17	
$\frac{1}{2}$ pint alcohol.....		.14	
1 pint ammonia.....		1.68	
9 scrub brushes.....		.75	
3 rolls tape.....		.66	
$1\frac{1}{2}$ quart Pearline.....		.70	
3 thermometers.....		.24	
12 Doli soap.....		.24	
1 chamols skin.....		.39	
1 comb.....			



Reception Room.

1902]

PUBLIC BUILDINGS AND PROPERTY

35

1 basket	\$.17	
300 yards toweling		1.05	\$ 153.82
10 steel mats	\$	124.50	
1 case toilet paper		7.75	
1 case toilet paper		8.75	
1 case toilet paper roll		7.75	16.50

Total janitors' supplies..... \$ 170.32

Material for cleaning,

2 pounds lump pumice.....	.16
10 gallons disinfectant	9.50
2 dozen tin cups.....	.60
1.287 pounds soft soap.....	77.23

Repairs,

3 closet bowls, including seats and rubber connections, \$9.85. \$	29.55
2 sections iron lavatory, complete	32.00
Oak lumber and machine work, seven hours.....	9.75
1 Yale latch and two door bolts.....	4.00
1 12x15 register	1.80

Miscellaneous,

1 curtain roller.....	1.25
Repairing plaster at boiler house shop.....	14.00
10 radiators, including valve and fittings for library.....	174.49
2 doors for board of control rooms.....	50.00
Plumbing for milk testing room	\$ 21.95
Lumber and doors for milk testing room.....	52.15
Radiator for milk testing room.....	9.36

Screen doors and transom, attorney-general's room.....	\$ 83.46	83.46
1 plate glass 26x49.....		35.00
3 book shelves, library		6.50
3 coal chutes, 1 tank, boiler house.....		118.00
2 loads sand, at 50c.		240.00
4 loads dirt, at 50c.		1.00
Repairing ice box, historical building.....		2.00
Repairing closet tank, capitol.....		6.20
1 plate glass superintendent public instruction, 2 library..		3.50
1 case superintendent public instruction.....		80.50
3 cases board of health		76.00
Transom glass horticultural room.....		312.00
Roof repairs, 11 barrels cement, \$3.75, 5 pounds solder....	42.50	20.00
30 square Bangor No. 1, slate.....	240.00	
211 hours labor, at 25c, 224 hours labor at 50c.....	165.00	
2 loads sand, at 65c.....	1.30	

1 box toilet paper	8.75	\$ 448.80
3 1/2 dozen towels	4.50	
50 yards toweling and making.....	8.00	
1 sign.....	.50	

1 box toilet paper	8.75
1 box toilet paper	7.75
Repairing one water cooler.....	1.00
Electric clock repairs.....	2.00
Rope for ash elevator.....	6.00

25.50

Miscellaneous—Continued.

Lettering glass, Board of Control	\$ 3.50	
1 P. P. Glass, 54x83, library	27.40	
8 barrels Portland cement, roof repairs	30.00	
4 loads sand for roof repairs, 65 cents	2.60	
		\$ 63.50
1 case toilet paper	8.75	
1 chair	9.30	
20 small tables	30.00	
Moving furniture (Transfer Co.)	13.40	
Repairing 2 flags	1.00	
		62.45
1 case toilet paper	8.75	
200 yards toweling	22.00	
4 flags	44.00	
Material for draping	74.03	
		148.78
1 box toilet paper	7.75	
1 flag	13.00	
Placards for guns	1.25	
		22.00
1 box toilet paper	8.75	
74 towels	11.10	
		19.85
Total miscellaneous amount		\$ 343.98
Total amount		\$ 51,322.24

Miscellaneous.

1 box toilet paper	\$ 8.75	
74 towels	11.10	
		\$ 19.85
Total amount		\$ 51,342.09

EXHIBIT B

Third Quarter, 1901.

Sold to Al. Sandler, August 12,		
6,070 pounds scrap iron, 15 cents	\$ 9.15	
35 pounds scrap brass, 8 cents	2.00	
Waste paper, September 24	8.50	
Total		\$ 19.65
Paid treasurer of state, September 24		19.65

First Quarter, 1900.

Sold to W. Gruener, 1 old typewriter	\$ 12.00	
Sold to J. G. Lawrence	2.00	
Total		\$ 14.00
Paid to John Herriott, treasurer of state, File 21		14.00

Second Quarter.

April 30, sold to H. Serene, old typewriter	\$ 5.00	
May 27, sold to L. Klonisky, 4 tons paper	27.50	
Total		\$ 32.50
Paid J. Herriott, April 30	\$ 5.00	
May 27	27.00	
Total		\$ 32.50

EXHIBIT C.

INVOICE OF MATERIAL AND TOOLS.

ATTIC.

6 blocks	\$ 5.00	
300 ft. of Manila rope	6.00	
200 gas globes, 10 cents	20.00	
600 pieces slate, 8 cents	48.00	
Flags and decoration	75.00	
1 engineer's level	75.00	
Total		\$ 229.00

BASEMENT.

14 section ladder	\$ 30.00	
4 long ladders	10.00	
1 long step ladder	4.00	
1 old gas stove	5.00	
2 barrels soft soap	36.00	
1 barrel sovogran	21.00	
30 gallon crude oil, 10 cents	3.00	
100 towels, 35c	35.00	
Total		\$ 144.00

GREENHOUSE.

3 old lawn mowers	\$ 6.00	
2 old shovels; 1 spade; 1 rake	1.50	
1 wrench; 1 screwdriver; 1 sheep-shear	1.25	
Total		\$ 8.75

CARPENTER SHOP.

2 carpenter benches	\$ 18.00	
1 mortise machine	20.00	
14 hand screws	3.20	
1 upholsterer hammer	1.00	
1 corner brace	1.50	
1 bench vise	2.00	
1 grindstone	2.50	
1 miter box	9.00	
10 paint brushes	4.00	
1 automatic drill85	
Total		\$ 62.05

ENGINEER'S SHOP.

1 forge	\$ 18.00	
1 anvil	1.00	
1 vise	5.00	
1 gasoline torch	2.50	
1 set plumbers tools	5.00	
1 brace	1.00	
1 screw plate	9.00	
1 pair snips	1.50	
4 screw drivers	2.00	
1 hack saw50	
2 hand vise	1.00	
4 plyers	2.50	
1 hatchet65	
1 carpenter hammer50	
1 saw	1.50	
1 scale	1.50	
1 drill machine	10.00	
1 breast drill	2.00	
8 fire tongs	4.00	
100 key blanks	10.00	

1 ratchet and drills.....	\$ 5.00
20 drills.....	4.00
1 crow bar, 5 ft.....	.50

Total..... \$ 88.65

BOILER HOUSE.

1 iron wheelbarrow.....	\$ 10.00
2 old wheelbarrows.....	10.00
300 lbs. of waste.....	21.00
250 pounds of castings, 2½ cents.....	6.25
4 oil tanks.....	15.00
25 gallons machine oil, 15 cents.....	3.75
20 gallons cylinder oil, 35 cents.....	7.00
1 forge and anvil.....	5.00
15 pounds tallow, 6 cents.....	.90
1 blacksmith vise.....	.75
4 fire tongs.....	1.25
2 sledge hammers.....	1.20
12 fire tools.....	6.00
1,500 fire brick.....	45.00
1 scale.....	40.00

Total..... \$ 173.10

STORE ROOM.

15 chair bases.....	\$ 60.00
50 pounds salmoniae, 8 cents.....	4.00
48 la clachne cups, 32 cents.....	15.36
200 rinks, 3 cents.....	6.00
10 push buttons, 12½ cents.....	1.25
400 feet garden hose, 10 cents.....	40.00
50 pounds iron, 3 cents.....	1.50
20 pounds steel, 10 cents.....	2.00
2 water closet bowls, \$9.85.....	19.70
9 washbasins, \$1.50.....	13.50
36 snow shovels, 20 cents.....	7.20
4 rakes, 35 cents.....	1.40
3 ash hoes.....	1.50
8 coal shovels, 70 cents.....	5.60
7 dirt shovels, 60 cents.....	4.20
1 spade.....	.65
7 wrenches, 50 cents.....	3.50
2 dozen files.....	2.40
12 chisels.....	1.20
3 hammers.....	1.50
2 hatchets.....	.70
20 pounds wire, 20 cents.....	4.00
250 feet wire cloth, 2½ cents.....	6.25
2 trowels.....	.70

Total..... \$ 204.11

STORE ROOMS.

30 gallons linseed oil, 60 cents.....	\$ 18.00
100 pounds white lead, 6 cents.....	6.00
100 pounds Venetian red, 2½ cents.....	2.50
50 pounds putty, 2½ cents.....	1.25
10 gallons turpentine, 50 cents.....	5.00
2 gallons varnish.....	4.00
2 pounds shellac.....	.90
40 pieces, glass.....	7.50
20 pounds various colors.....	2.00
6 pounds graphite.....	1.50

100 key cans	\$ 10 00
3 lawn mowers	37.20
500 pounds nails, 3 cents.....	15.00
80 gross screws, various sizes.....	20.00
2 dozen leg screws40
60 dozen bolts, various sizes.....	6.00
30 paper tacks.....	.90
10 paper clout nails30
20 paper brads60
200 feet copper sashcord.....	14.00
40 feet copper sashcable	5.20

Material for upholstering—

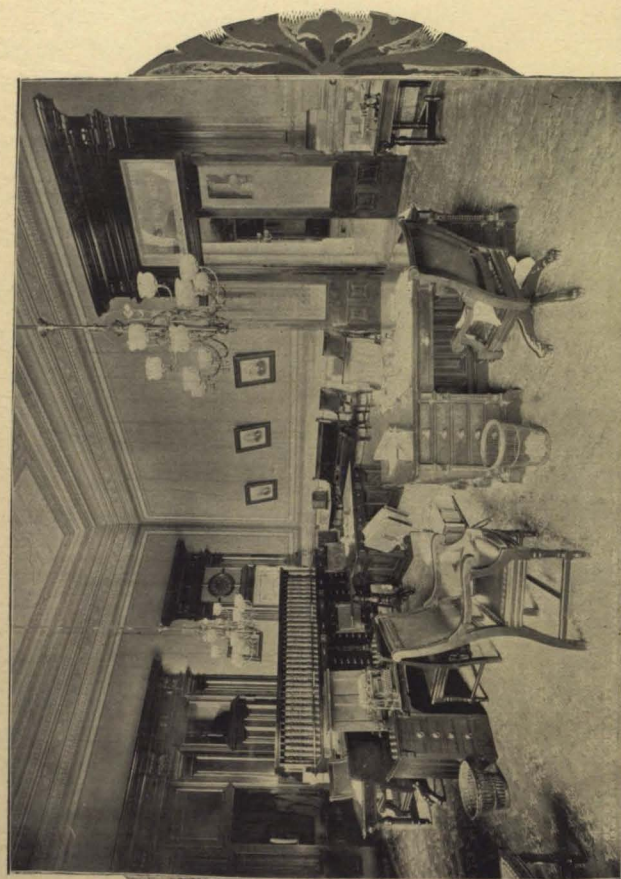
150 chairs, 70 cents	105.00
8 pounds glue.....	1.20
5 quire sand paper.....	.50
2 gross hooks	12.00
50 pounds Hallyard, 25 cents	12.50
3 gas brackets.....	1.50
30 bibs, various kinds.....	30.00
20 air vents, 80 cents.....	16.00
3 plumbers' friends.....	4.50
20 chair springs, 80 cents	16.00
90 boxes of tapers, 4½ cents	4.05

Total \$ 315 50

CELLAR.

1 pipe machine, 1 inch to 4 inches.....	\$ 40.00
2 die stocks, ½-inch to 2 inches	13.00
3 pipe cutters.....	4.50
2 pipe vises.....	11.00
7 Stillson wrenches, 8 inches to 4 feet.....	27.50
4 V. P. pipe wrenches	4.75
7 pipe tongs, ¾ to 2 inches	3.80
8 chain tongs.....	50.00
6 monkey wrenches	2.50
3 hammers	1.25
2 chain hoist	36.00
500 feet tile, 20 cents	100.00
120 feet tile, 50 cents	60.00
2 elbows, 14 inches	14.00
1 elbow, 6 inches.....	.75
20 elbows, 4 inches, including reducing ells	12.00
54 elbows, 3 inches, including reducing ells	16.20
30 elbows, 2½ inches, including reducing ells	6.00
32 elbows, 2 inches, including reducing ells	4.80
65 elbows, 1½ inch, including reducing ells	6.50
35 elbows, 1¼ inch, including reducing ells	2.80
70 elbows, 1 inch, including reducing ells.....	4.20
48 elbows ¾ inch, including reducing ells	1.84
36 elbows, ½ inch, including reducing ells	1.08
6 elbows, ¾ inch, including reducing ells18
10 elbows, ¾ inch, including reducing ells20
5 lock nuts25
1 tee, 8 inches.....	3.00
10 tees, 4 inches, including reducing tees	6.00
84 tees, 3 inches, including reducing tees.....	26.40
73 tees, 2½ inches, including reducing tees.....	18.25

Total \$ 478 69



Secretary's Office.

375 tees, 2 inches, including reducing tees.....	\$ 75.00
400 tees, 1½ inch, including reducing tees.....	60.00
365 tees, 1¼ inch, including reducing tees.....	36.50
375 tees, 1 inch, including reducing tees.....	30.00
400 tees, ¾ inch, including reducing tees.....	24.00
485 tees, ½ inch, including reducing tees.....	24.25
57 plugs, ¼ inch to 6 inches.....	5.20
17 bushings.....	1.53
7 crosses, 3 inches.....	3.15
9 crosses, 2½ inches.....	2.34
26 crosses, 2 inches.....	5.20
19 crosses, 1½ inch.....	1.90
24 crosses, 1¼ inch.....	1.92
26 crosses, ¾ inch.....	1.04
5 crosses, ½ inch.....	.15
1 cross, ¾ inch.....	.03
107 feet, 9 inch pipe.....	119.00
26 feet, 8 inch pipe.....	14.30
60 feet, 6 inch pipe.....	70.00
25 feet 5-inch pipe.....	11.00
80 feet 4-inch pipe.....	24.00
50 feet 3-inch pipe.....	12.50
40 feet 2½-inch pipe.....	8.00
100 feet 2-inch pipe.....	18.00
130 feet 1½-inch pipe.....	19.50
170 feet 1¼-inch pipe.....	22.40
650 feet 1-inch pipe.....	65.40
460 feet ¾-inch pipe.....	32.20
350 feet ½-inch pipe.....	17.50
200 feet ¾-inch pipe.....	10.00
90 feet ¼-inch pipe.....	3.60
48 feet ¼-inch pipe.....	1.44
2 valves, 8-inch.....	20.00
1 valve, 4-inch.....	5.00
12 valves, 2-inch.....	24.00
12 valves, 1½-inch.....	22.40
12 valves, 1¼-inch.....	22.40
12 valves, 1-inch.....	9.60
13 valves, ¾-inch.....	7.80
16 valves, ½-inch.....	8.00
14 valves, ¼-inch.....	4.20
24 stop cocks.....	11.25
136 caps, various sizes.....	13.60
42 couplings, 2½-inch to 9-inch.....	8.40
290 couplings, ½-inch to 2-inch, R. & L.....	14.50
40 unions, ½-inch to 2-inch.....	4.00
8 flange unions, 2-inch to 9-inch.....	24.00
178 drop ells and tees.....	5.34
475 brass fittings of various sizes.....	47.50

Total..... \$ 933.07

EXHIBIT D.

INVOICE NO. 1.

Of all furniture in the capitol building, made December, 1901, in compliance with section 151 of the code.

COMMITTEE ROOM NO. 1.

2 walnut tables, 10 feet, \$60 each.....	\$ 120.00
1 dining room table.....	20.00
1 kitchen table.....	1.00
31 walnut chairs, small, \$10 each.....	310.00
Total.....	\$ 451.00

COMMITTEE ROOM NO. 2.

1 walnut table, 8 feet.....	\$ 40.00
11 walnut chairs, small, \$10 each.....	110.00
Total.....	\$ 150.00

COMMITTEE ROOM NO. 3.

13 walnut chairs, small, \$10 each.....	\$ 130.00
---	-----------

COMMITTEE ROOM NO. 4.

1 walnut table, 6 feet.....	\$ 30.00
1 file case.....	2.00
Total.....	\$ 32.00

COMMITTEE ROOM NO. 5.

1 table.....	\$ 40.00
1 revolving chair.....	20.00
Total.....	\$ 60.00

COMMITTEE ROOM NO. 6.

2 oak tables, 10 feet, \$50 each.....	\$ 100.00
22 cane chairs, \$3 each.....	66.00
1 file case.....	2.00
1 kitchen table.....	1.25
Total.....	\$ 169.25

COMMITTEE ROOM NO. 7.

1 oak table, 6 feet.....	\$ 30.00
6 cane chairs, \$3 each.....	18.00
2 old chairs, 50 cents each.....	1.00
Total.....	\$ 49.00

COMMITTEE ROOM NO. 8.

2 oak tables, 10 feet, \$50 each.....	\$ 100.00
26 cane chairs, \$3 each.....	78.00
Total.....	\$ 178.00

COMMITTEE ROOM NO. 9.

1 oak table, 6 feet.....	\$ 30.00
7 chairs, old, 50 cents each.....	3.50
Total.....	\$ 33.50

COMMITTEE ROOM NO. 10.

1 oak table, 10 feet.....	\$ 50.00
24 cane chairs, \$3 each.....	72.00
Total.....	\$ 122.00

COMMITTEE ROOM NO. 11.

1 oak table, 8 feet.....	\$ 40.00
6 cane chairs, \$3 each.....	18.00
Total.....	\$ 58.00

COMMITTEE ROOM NO. 12.

2 oak tables, 10 feet, \$50 each.....	\$ 100.00
1 settee, perforated seat.....	15.00
11 cane chairs, \$3 each.....	33.00
Total.....	\$ 148.00

COMMITTEE ROOM NO. 13.

1 oak table, 8 feet.....	\$ 40.00
9 cane chairs, \$3 each.....	27.00
Total.....	\$ 67.00

COMMITTEE ROOM NO. 14.

1 oak table, 8 feet.....	\$ 40.00
10 cane chairs, \$3.00 each.....	30.00
1 kitchen table.....	1.25
Total.....	\$ 71.25

COMMITTEE ROOM NO. 15.

1 oak table, 10 feet.....	\$ 50.00
15 cane chairs, \$3.00 each.....	45.00
1 kitchen table.....	1.00
Total.....	\$ 96.00

COMMITTEE ROOM NO. 16.

1 oak table, 8 feet.....	\$ 40.00
7 cane chairs, \$3.00 each.....	21.00
Total.....	\$ 61.00

COMMITTEE ROOM NO. 17.

2 oak tables, 8 feet, \$40.00 each.....	\$ 80.00
16 cane chairs, \$3.00 each.....	48.00
2 kitchen tables.....	2.50
Total.....	\$ 130.50

COMMITTEE ROOM NO. 18.

3 oak tables, 8 feet, \$40.00 each.....	\$ 120.00
2 kitchen tables, \$1.00 each.....	2.00
25 cane chairs, \$3.00 each.....	75.00
Total.....	\$ 197.00

COMMITTEE ROOM NO. 19.

2 oak tables, 8 feet, \$40.00 each.....	\$ 80.00
13 cane chairs, \$3.00 each.....	39.00
2 kitchen tables.....	2.50
Total.....	\$ 121.50

COMMITTEE ROOM NO. 20.

1 oak table, 8 feet.....	\$ 40.00
4 cane chairs, \$3.00 each.....	12.00
1 kitchen table.....	1.25
Total.....	\$ 53.25

COMMITTEE ROOM NO. 21.

2 oak tables, 8 feet, \$40.00 each.....	\$ 80.00
14 cane chairs, \$3.00 each.....	42.00
1 kitchen table.....	1.25
Total.....	\$ 123.25

COMMITTEE ROOM NO. 22.

2 cherry tables, 10 feet, \$60.00.....	\$ 120.00
25 cherry chairs, small, \$10.00 each.....	250.00
1 walnut table.....	15.00
Total.....	\$ 385.00

COMMITTEE ROOM NO. 23.

1 cherry table, 10 feet.....	60.00
2 kitchen tables, \$1.00 each.....	2.00
22 cherry chairs, small, \$10.00 each.....	220.00
Total.....	\$ 282.00

COMMITTEE ROOM NO. 24.

2 cherry tables, 6 feet, \$40.00 each.....	\$ 80.00
23 cherry chairs, small, \$10.00 each.....	230.00
1 kitchen table.....	1.25
Total.....	\$ 311.25

COMMITTEE ROOM NO. 25.

1 cherry table, 6 feet.....	\$ 40.00
1 walnut desk.....	20.00
3 cherry chairs, small, \$10.00 each.....	30.00
Total.....	\$ 90.00

COMMITTEE ROOM NO. 26.

1 cherry table, 8 feet.....	\$ 50.00
6 cherry chairs, small, \$10.00 each.....	60.00
2 old desks.....	2.00
Total.....	\$ 112.00

COMMITTEE ROOM NO. 27.

1 walnut table, 10 feet.....	\$ 60.00
12 walnut chairs, small, \$10 each.....	120.00
Total.....	\$ 180.00

COMMITTEE ROOM NO. 28.

1 cherry table, 10 feet.....	\$ 60.00
1 kitchen table.....	1.25
10 cherry chairs, small, \$10 each.....	100.00
Total.....	\$ 161.25

COMMITTEE ROOM NO. 29.

1 cherry table, 8 feet	\$ 50.00	
10 cherry chairs, small, \$10 each	100.00	
Total		\$ 150.00

LIEUTENANT-GOVERNOR, TWO ROOMS.

1 cherry desk, French	\$ 150.00	
1 cherry table, 6 feet	40.00	
1 settee, plush	60.00	
1 chair, plush, revolving	40.00	
18 chairs, cherry, small, \$10 each	180.00	
1 mirror, 15x28	2.00	
Total		\$ 472.00

SPEAKER OF THE HOUSE, TWO ROOMS.

1 walnut desk	\$ 10.00	
1 walnut table, 6 feet	40.00	
1 ash table, 4 feet	5.00	
1 settee, plush	60.00	
1 chair, plush, revolving	40.00	
4 chairs, plush, small, \$30 each	120.00	
1 kitchen table	1.25	
1 dining room table	20.00	
Total		\$ 296.25

POSTOFFICE—SECOND STORY.

1 packing table	\$ 8.00	
4 small chairs, \$10 each	40.00	
1 chair, upholstered	20.00	
Total		\$ 68.00

TELEGRAPH OFFICE.

1 table, 4 feet	\$ 8.00	
1 walnut chair	10.00	
Total		\$ 18.00

LADIES' TOILET.

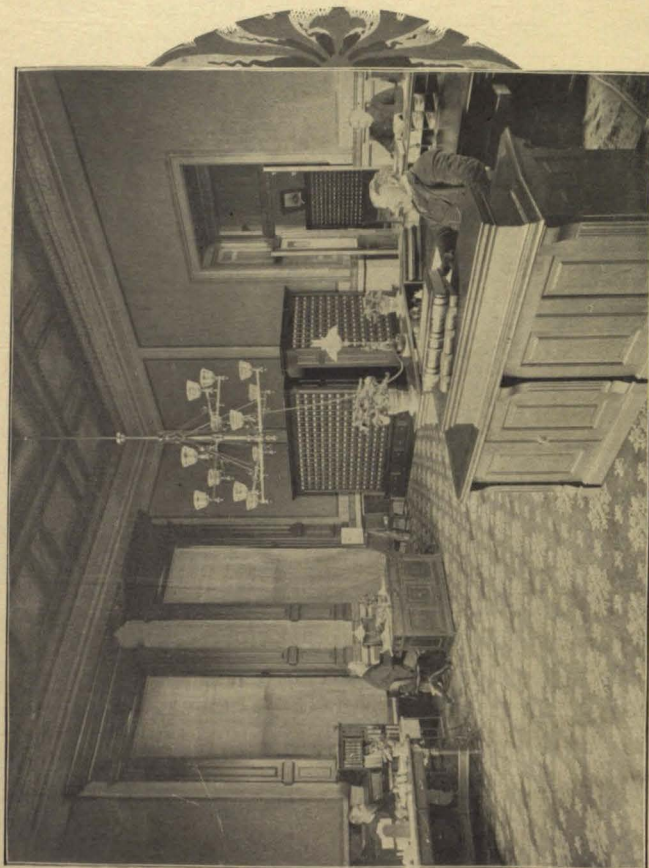
1 desk, from old state house	\$ 1.00	
2 walnut chairs, small, \$10 each	20.00	
1 mirror, 7x2 feet	20.00	
Total		\$ 41.00

HOUSE OF REPRESENTATIVES.

118 revolving chairs, 5 in the library, \$20 each	\$ 2,360.00	
10 settees, leather, \$65 each	650.00	
28 arm-chairs, 2 in the library, \$15 each	420.00	
10 pairs of curtains, attic storeroom, \$150 each	1,500.00	
9½ pairs curtains, \$40 each	380.00	
1 file case	2.00	
10 chairs, \$10 each	100.00	
Total		\$ 5,412.00

WATER CLOSET OF THE HOUSE.

4 chairs, 50 cents each	\$ 2.00	
1 mirror, 14x24	2.00	
Total		\$ 4.00



Auditor's Office.

CLOAK-ROOM OF THE HOUSE.

1 walnut table, 5 feet.....	\$	25.00
50 camp chairs, 60 cents each		30.00
2 settees, perforated seats, \$15 each.....		30.00
Total	\$	85.00

INVOICE NO. 4.

NORTH AND SOUTH GALLERY OF THE HOUSE.

10 walnut arm chairs, \$15.00 each.....	\$	150.00
1 camp chair.....		.60
Total	\$	150.60

SERGEANT-AT-ARMS OF THE HOUSE.

1 walnut table.....	\$	15.00
3 pigeon hole cases.....		2.50
1 chair.....		10.00
1 kitchen table.....		1.25
Total.....	\$	28.75

ROTUNDA.

4 settees, perforated seats, \$15.00 each	\$	60.00
---	----	-------

CORRIDOR SOUTH OF SENATE.

1 dining-room table	\$	20.00
1 packing-room table.....		3.00
Total.....	\$	23.00

SENATE CHAMBER.

70 revolving chairs, mahogany, \$25.00 each....	\$	1750.00
26 arm chairs, mahogany, \$20.00 each.....		520.00
10 settees, leather, mahogany, \$75.00 each		750.00
2 settees, perforated seats, belonging to the corridor.....		30.00
10 pairs of curtains, attic storeroom, \$150.00 each		1500.00
3 pairs of curtains, attic storeroom, \$40.00 each.....		120.00
Total	\$	4670.00

CLOAK ROOM OF THE SENATE.

1 cherry table, 5 ft.....	\$	25.00
2 desks from old state house, \$2.00 each		4.00
45 camp chairs, 60 cents each		27.00
Total.....	\$	56.00

SERGEANT-AT-ARMS OF THE SENATE.

2 kitchen tables.....	\$	2.00
-----------------------	----	------

WATER CLOSET—SENATE.

2 chairs, 50 cents each.....	\$	1.00
1 small bench50
1 mirror, 15x22.....		2.00
Total	\$	3.50

NORTH AND SOUTH GALLERIES OF THE SENATE.

11 small cherry chairs, \$10.00 each.....	\$ 110.00
4 dining-room chairs in the attic, \$2.50 each	10.00
2 camp chairs, 60 cents each.....	1.20

Total..... \$ 121.20

LIBRARY.

1 upholstered chair, revolving.....	\$ 30.00
2 upholstered chairs, small, \$20.00 each.....	40.00
1 upholstered settee.....	50.00
37 small chairs, \$10.00 each.....	370.00
33 dining chairs, \$2.50 each.....	82.50
8 chairs, 50 cents each.....	4.00
1 chair, revolving.....	2.00
1 desk, rolling top.....	100.00
1 desk in the main room.....	250.00
1 desk, flat top.....	75.00
1 typewriter, with desk.....	50.00
1 clock.....	2.00
1 mirror, 36x24.....	5.00
1 mirror, 24x15.....	2.00
1 stand for large book, wood.....	10.00
1 stand, adjustable, iron.....	5.00
2 stands, wood, 50 cents each.....	1.00
2 revolving book cases.....	30.00
1 roll-top desk.....	33.70
1 typewriter.....	60.00
1 typewriter chair.....	6.75
1 willow couch.....	15.00
1 revolving stool.....	6.25
1 catalogue cabinet.....	12.00
11 tables, 5 feet, \$20.00 each.....	220.00
6 tables, 4 feet, \$10.00 each.....	60.00
1 table, 3 feet.....	10.00
5 tables, kitchen, \$1.00 each.....	5.00
1 file case, 5 feet long.....	25.00
1 stand, \$10.00, with letter press, \$10.00.....	20.00
1 typewriter desk.....	6.00
1 typewriter.....	40.00
2 card cases, 5 feet high.....	300.00
4 book trunks.....	60.00
1 dictionary and stand.....	10.00
1 walnut chair, upholstered.....	6.00
70 cases, traveling library in use, and circulating.....	700.00

Total..... \$ 2,004.20

GOVERNOR'S OFFICE—FOUR ROOMS.

1 piano and stool, including cover.....	\$ 250.00
1 French desk, mahogany.....	200.00
1 French desk.....	150.00
2 double desks, cherry, \$125.00 each.....	250.00
2 double desks.....	40.00
1 standing desk, 15 feet long, \$20.00 per foot.....	300.00
1 table, mahogany.....	200.00
1 table, mahogany.....	150.00
1 table, cherry, 6 feet, \$40.00.....	40.00

1 table, mahogany, 3 feet.....	15.00
1 table, walnut, 4 feet.....	10.00
14 arm chairs, plush, \$45.00 each.....	630.00
10 small chairs, plush, \$30.00 each.....	300.00
6 arm chairs, leather, \$30.00 each.....	180.00
2 small chairs, cane seats, \$7.50 each.....	15.00
1 revolving chair, plush.....	10.00
1 cane rocker.....	5.00
2 dining-room chairs.....	5.00
1 chair.....	.50
5 sofas, plush, mahogany, \$90.00 each.....	450.00
1 sofa, plush.....	50.00
1 letter press.....	15.00
7 pairs of silk lined curtains, \$75.00 per pair.....	525.00
1 portable lamp.....	5.00
1 typewriter with desk.....	100.00
1 typewriter with desk.....	85.00
1 adjustable seat.....	5.00
1 revolving book case.....	12.00
2 revolving book cases.....	15.00
2 dictionaries with stands, \$12.00 each.....	24.00
1 mirror, 6x2 feet.....	10.00
1 mirror, 28x15 inches.....	1.50
3 revolving chairs, \$25.00 each.....	75.00
1 blotter bath.....	3.75
1 typewriting cabinet.....	60.00
1 typewriting cabinet.....	28.50

Total..... \$ 4,233.25

AUDITOR'S OFFICE—THREE ROOMS ON FIRST FLOOR, ONE STOREROOM IN BASEMENT.

1 seal.....	\$ 10.00
1 Eureka blotter bath.....	2.75
1 French desk, walnut.....	125.00
1 standing desk, walnut, 12 feet long.....	240.00
1 standing desk, walnut, 8 feet long.....	\$ 160.00
3 double desks, flat top, \$100 each.....	300.00
1 desk with table on both sides.....	200.00
1 desk, flat top.....	40.00
1 standing desk.....	6.00
5 pigeonhole cases.....	555.00
1 walnut table, 8 feet.....	50.00
1 walnut table, 6 feet.....	40.00
1 walnut table, 10 feet.....	30.00
1 table.....	3.00
1 kitchen table.....	4.00
2 sofas, plush, \$50 each.....	2.00
1 revolving book cases, \$12 each.....	100.00
4 mail boxes, hammered iron, \$5 each.....	20.00
3 portable lamps, \$5 each.....	15.00
11 arm chairs, \$15 each.....	165.00
9 small chairs, \$10 each.....	90.00
2 revolving chairs, \$7.50 each.....	15.00
1 revolving chair, cane seat.....	5.00
1 adjustable chair.....	7.50

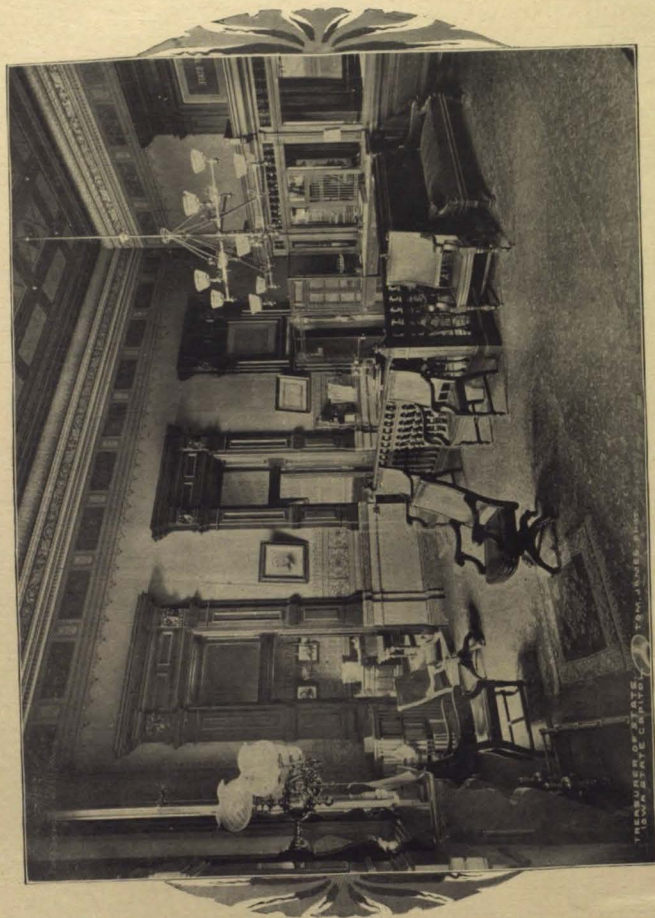
1 office stool	\$.50
1 chair50
1 dictionary and stand	38.00
1 typewriter, with desk, in use one year	90.00
1 typewriter	68.75
1 adding machine	250.00
1 mirror, 20x12	1.00
2 pairs of curtains, \$50 each	100.00
1 bank punch	25.00
1 letter press	12.50
2 scales	4.00
1 square table	10.00
Total	\$ 2,975.50

SUPERINTENDENT OF PUBLIC INSTRUCTION—TWO ROOMS FIRST FLOOR, ONE
STOREROOM IN BASEMENT.

2 French desks, walnut, \$150	\$ 300.00
2 double desks, flat top, \$100	200.00
1 table, walnut, 8 feet	50.00
2 tables, walnut, 6 feet	80.00
2 tables, dining-room	40.00
4 revolving chairs, walnut, \$20	80.00
16 arm chairs, walnut, \$15	240.00
9 small chairs, walnut, \$10	90.00
3 dining-room chairs, walnut, \$2.50	7.50
1 revolving chair	2.00
1 adjustable seat	7.50
2 sofas, plush, \$60	120.00
2 dictionaries, with stands, \$12	24.00
2 revolving book cases, \$12	24.00
1 Shannon file case, 2½ feet wide	25.00
1 typewriter, with desk	100.00
1 standing desk, 12 feet	180.00
1 mirror, 16x14	2.00
1 letter press	15.00
2 window curtains, \$50	100.00
1 door curtain	15.00
1 kitchen table	1.25
Total	\$ 1,703.25

TREASURER'S OFFICE—TWO ROOMS.

1 French desk, walnut	\$ 150.00
1 standing desk, walnut, 7½ feet long	112.50
1 flat top desk	60.00
1 file case, 4 feet wide	30.00
2 walnut tables, 6 feet, \$30	60.00
1 table for letter press	5.00
2 revolving book cases, \$12	24.00
1 wash stand, marble top	5.00
1 lounge	65.00
1 steel case	400.00
1 adding machine	250.00
4 desk	87.50
1 typewriter chair	6.75
2 rifles	35.00
1 table, marble top	10.00
2 dictionaries with stands, \$12	24.00
1 typewriter with desk, new	120.00
2 pairs of curtains, \$50	100.00
2 sofas, plush, \$60	120.00



Treasurer's Office.

1 adjustable book stand	\$ 10.00
5 revolving chairs, walnut, \$20.	100.00
9 arm chairs, walnut, \$15	135.00
9 small chairs, walnut, \$10	90.00
1 office stool	1.00
1 U. S. Springfield rifle, belt and ammunition	30.00
2 revolvers, Colt's navy, \$15	30.00
1 bank punch	25.00
1 scale	2.00
3 portable lamps, \$5	15.00
1 mirror, 28x16	2.00
1 letter press	15.00
1 typewriter case, \$20	20.00
1 desk with sides	125.00
1 small case	14.00
1 Eureka blotter bath	2.75
Total	\$ 2,284.50

HORTICULTURAL SOCIETY—ONE ROOM.

1 revolving chair	\$ 20.00
20 arm chairs, \$15 each	300.00
8 small chairs, \$10 each	80.00
1 portable lamp	5.00
1 dining-room chair	2.50
2 kitchen tables	2.00
1 walnut table	5.00
1 square stand	1.50
Total	\$ 416.00

ADJUTANT-GENERAL'S OFFICE—TWO ROOMS FIRST FLOOR, ONE ROOM IN THE BASEMENT.

1 bookcase, 8 feet	\$ 100.00
2 pigeonhole cases, 6 feet, \$75 each	150.00
2 pigeonhole cases, 9 feet, \$112.50	225.00
1 pigeonhole case, 23 feet	257.50
2 standing desks, \$38 each	76.00
1 French desk	125.00
1 desk	35.00
1 rolling top desk	50.00
1 revolving bookcase	7.00
1 typewriter with desk	90.00
1 dictionary with stand	12.00
1 stand for letter press	5.00
1 letter press	8.00
1 flat top desk	12.00
1 revolving chair	30.00
1 revolving chair	6.00
12 arm chairs, \$5.00 each	60.00
1 dining room chair	2.50
1 portable lamp	5.00
1 mirror, 26x15 inches	2.00
1 door curtain	5.00
1 30-foot case	400.00
1 small chair	10.00
2 small tables, \$4.00 each	8.00
3 chairs, 50 cents each	1.50
1 table	2.00
1 table	1.00

1 dining-room table.....	\$ 21.00
2 kitchen tables.....	2.00
1 old case.....	2.00

Total..... \$ 25.00

ATTORNEY-GENERAL—TWO ROOMS.

1 desk, rolling top.....	\$ 150.00
1 desk, flat top.....	100.00
1 book case, 24 sections.....	69.00
1 typewriter with desk.....	100.00
1 stand for letter press.....	5.00
1 letter press.....	30.00
1 stand.....	1.25
1 dictionary and stand.....	12.00
1 revolving chair.....	20.00
3 arm chairs, \$15.00 each.....	45.00
1 typewriter chair.....	6.75
7 small chairs, \$10.00 each.....	70.00
1 revolving book case.....	12.00
1 cherry table, 8 feet.....	50.00
1 sofa, plush.....	60.00
1 mirror, 60x18.....	5.00
1 portable lamp.....	5.00
1 table.....	10.00
1 kitchen table.....	1.25
1 file cabinet.....	152.00
1 Eureka blotter bath.....	2.75

Total..... \$ 887.00

CLERK OF THE SUPREME COURT—TWO ROOMS ON THE FIRST FLOOR, ONE ROOM IN THE BASEMENT.

1 standing desk, 12 feet long.....	\$ 300.00
1 French desk.....	150.00
1 double desk, flat top.....	125.00
2 old desks, \$10.00 each.....	20.00
1 desk from old state house.....	2.00
1 table, cherry, 8 feet.....	40.00
1 table, stained.....	20.00
1 table, round.....	5.00
1 revolving book case.....	12.00
1 dictionary and stand.....	12.00
1 file case.....	3.00
1 file case in vault.....	5.00
1 case for letter press.....	4.00
1 letter press.....	6.00
1 plush sofa.....	50.00
4 revolving chairs, \$20.00 each.....	80.00
12 arm chairs, \$15.00 each.....	165.00
7 dining-room chairs, \$2.50 each.....	17.50
1 chair.....	.50
1 office stool.....	1.00
1 adjustable book stand.....	10.00
1 portable lamp.....	5.00
1 shelf, 4 feet high.....	6.00
1 typewriter.....	60.00
1 scale.....	1.00
1 typewriter with desk, in use six years.....	60.00

1 standing desk.....	\$ 30.00
1 table.....	15.00
1 kitchen table.....	1.00

Total..... \$ 1,206.00

RAILROAD COMMISSION—TWO ROOMS ON THE FIRST FLOOR, ONE ROOM IN BASEMENT.

1 standing desk, 7 feet.....	\$ 140.00
1 double desk, flat top.....	125.00
1 flat top desk.....	60.00
1 desk from old state house.....	2.00
1 table, cherry, 8 feet.....	50.00
1 table, cherry, 6 feet.....	40.00
1 typewriter with desk.....	90.00
1 stand for letter press.....	20.00
1 letter press.....	12.50
1 adjustable book stand.....	10.00
1 adjustable seat.....	5.00
1 plush sofa.....	50.00
1 portable lamp.....	5.00
6 revolving chairs, \$20 each.....	120.00
12 arm chairs, \$15 each.....	180.00
7 small chairs, \$10 each.....	70.00
1 chair, perforated seat.....	3.00
4 chairs, 50 cents each.....	2.00
1 office stool.....	1.00
1 adding machine.....	50.00
1 scale.....	2.00
1 drafting table.....	10.00
2 wardrobes, \$6 each.....	12.00
1 typewriter.....	60.00
1 Eureka blotter bath.....	2.75

Total..... \$ 1,122.95

AGRICULTURAL SOCIETY—TWO ROOMS.

2 walnut tables, 10 feet, \$60 each.....	\$ 120.00
1 walnut table, 8 feet.....	50.00
1 double desk, flat top.....	124.00
1 desk, flat top.....	100.00
1 desk, flat top.....	40.00
1 standing desk, 8 feet long.....	120.00
1 wash stand.....	4.00
2 revolving chairs, \$20 each.....	40.00
2 arm chairs, \$15 each.....	30.00
14 small chairs, \$10 each.....	140.00
1 portable lamp.....	5.00
4 newspaper cases, 4x6 feet, \$100 each.....	400.00
1 display case.....	50.00
2 plush sofas \$50 each.....	100.00
1 dictionary and stand.....	12.00
1 mirror, 24x12.....	1.50
1 duplicator.....	50.00
1 kitchen table.....	1.25

Total..... \$ 1,388.75

JUDGE'S ROOM NO. 1.

1 folding bed, including 1 mattress, 2 pillows, 1 comfort, 1 blanket... \$	100.00
1 dresser.....	50.00
1 plush sofa.....	50.00
1 table, 4 feet.....	25.00

2 small chairs, \$10 each	\$ 20.00
1 book rack	3.00
1 portable lamp	5.00
1 revolving chair	20.00
1 arm chair	15.00
1 pair of curtains	25.00
1 typewriter	75.00
Total	\$ 388.00

JUDGE'S ROOM NO. 2.

1 folding bed, including one mattress, 2 pillows, 1 comfort, 1 blanket. \$	100.00
1 dresser	50.00
1 plush sofa	50.00
1 table	25.00
1 book rack	3.00
1 revolving chair	20.00
1 arm chair	15.00
1 small chair	10.00
1 portable lamp	5.00
1 pair of curtains	25.00
1 typewriter	75.00
Total	\$ 378.00

JUDGE'S ROOM NO. 3

1 folding bed, including 1 mattress, 2 pillows, 1 comfort, 1 blanket.... \$	100.00
1 dresser	50.00
1 plush sofa	50.00
1 table, 4 feet	25.00
1 book rack	3.00
1 revolving chair	2.50
1 arm chair	15.00
1 small chair	10.00
1 pair of curtains	25.00
1 typewriter	75.00
1 typewriter desk	10.00
1 portable lamp	5.00
Total	\$ 370.50

JUDGE'S ROOM NO. 4.

1 folding bed, including one mattress, 2 pillows, 1 comfort, 1 blanket.. \$	100.00
1 dresser	50.00
1 plush sofa	50.00
1 table, 4 feet	25.00
1 book rack	3.00
1 arm chair	15.00
1 small chair	10.00
2 pairs of curtains, \$25 each?	50.00
1 portable lamp	5.00
1 typewriter	75.00
Total	\$ 383.00

JUDGE'S ROOM NO. 5.

1 folding bed, including one mattress, 2 pillows, 1 comfort, 1 blanket.. \$	100.00
1 dresser	50.00
1 plush sofa	50.00
1 table, 4 feet	25.00
1 book rack	3.00
2 small chairs	20.00
1 portable lamp	5.00
2 pairs of curtains, per pair, \$25	25.00

1 typewriter	\$ 75.00
1 clock	6.00
1 cane rocker	6.00
Total	\$ 365.00

JUDGE'S ROOM, NO. 6.

1 folding bed, including 1 mattress, 2 pillows, 1 comfort, 1 blanket...	\$ 100.00
1 dresser	45.00
1 wardrobe	13.00
1 desk	35.00
1 leather sofa	45.00
1 revolving chair	20.00
2 arm chairs	30.00
1 book rack	3.00
1 portable lamp	5.00
1 typewriter, Judge Waterman	85.00
Total	\$ 381.00

CONSULTATION ROOM.

6 revolving chairs, \$20.00 each	\$ 120.00
5 arm chairs, \$15.00 each	75.00
2 small chairs, \$10.00 each	20.00
1 revolving book case	15.00
1 revolving book case	12.00
1 table, 10 feet	60.00
1 table, 8 feet	50.00
1 letter press and stand	9.00
2 dictionaries and stands	28.00
2 plush sofas, \$50.00 each	100.00
1 stand for water tank	1.50
1 mirror, 28x15	3.00
1 clock	13.50
8 code holders, \$3.00 each	24.00
1 typewriter and case	50.00
Total	\$ 581.00

SUPREME COURT.

1 mahogany desk	\$ 125.00
4 tables, 8 feet, \$65.00 each	125.00
1 stand on the table	10.00
6 revolving mahogany chairs, \$25.00 each	150.00
1 revolving walnut chair	20.00
2 dining room chairs	5.00
49 mahogany arm chairs, \$20.00 each	980.00
2 cherry arm chairs, \$15.00 each	30.00
4 settees, \$80.00 each	320.00
1 portable lamp	5.00
3 pairs of curtains, \$125.00 per pair	375.00
1 desk	35.00

Total

\$ 2,315.00

SECRETARY OF STATE—TWO ROOMS.

1 French desk, walnut	\$ 150.00
1 double desk, flat top	125.00
1 double desk, flat top	75.00
1 standing desk, 12 feet long	300.00
3 tables, 4 feet, \$30.00	90.00
1 table, 3½ feet	10.00

1 table.....	\$ 2.00
1 file case, 2 feet wide.....	15.00
1 book case, 8 feet high.....	20.00
1 book stand, wood.....	3.00
2 adjustable book stands.....	20.00
1 portable book case.....	3.00
2 dictionaries with stand, \$12.00.....	24.00
1 letter press.....	15.00
2 revolving book cases, \$12.00.....	24.00
2 plush sofas, \$50.00.....	100.00
1 kitchen table.....	1.25
5 revolving chairs.....	20.00
7 arm chairs, \$15.00.....	105.00
6 small chairs, \$10.....	60.00
1 mirror, 26x15.....	3.00
3 pairs of curtains, \$50.....	150.00
1 typewriter, with desk.....	100.00
1 scale.....	2.00
1 Eureka blotter bath.....	2.75
1 kitchen table.....	1.00
Total.....	\$ 1,421.00

DAIRY COMMISSION.

1 oak table with file case.....	\$ 75.00
1 table, walnut, 5 feet.....	15.00
1 table, oak, 8 feet.....	20.00
1 table, dining-room.....	20.00
2 tables, kitchen.....	2.00
4 tables, square, \$10 each.....	40.00
8 tables, square, \$1.25 each.....	10.00
1 typewriter, with desk, in use four years.....	90.00
1 desk.....	2.00
1 plush sofa.....	50.00
1 scale, with case.....	25.00
1 clock.....	2.00
1 letter press.....	7.50
Total.....	\$ 358.50

PHARMACY COMMISSION.

1 roll-top desk.....	\$ 48.00
1 oak desk, flat top.....	20.00
1 typewriter, with desk, in use 5 years.....	90.00
1 dining-room table.....	20.00
1 walnut table, 4½ feet.....	10.00
1 walnut table, 4 feet.....	10.00
1 kitchen table.....	1.00
7 square tables, \$1.25 each.....	8.75
1 stand for letter press.....	1.00

1 letter press.....	\$ 5.00
1 cane settee.....	5.00
1 desk from old state house.....	1.00
2 revolving chairs.....	40.00
1 small chair.....	10.00
9 cane chairs, \$3 each.....	27.00
2 chairs, 50 cents each.....	1.00
15 chairs, camp, 60 cents each.....	9.00
1 clock.....	5.00
1 dictionary and stand.....	12.00
1 portable lamp.....	5.00
1 mirror, 26x15.....	4.00
1 pigeonhole case.....	3.00
Total.....	\$ 335.75

LAND OFFICE.

1 cherry table, 6 feet.....	\$ 40.00
1 cherry desk, flat top.....	100.00
1 cherry desk, standing.....	125.00
1 round table.....	4.00
1 plush settee.....	50.00
1 revolving chair.....	20.00
1 table for letter press.....	2.00
1 portable lamp.....	5.00
1 scale.....	2.00
4 arm chairs, \$15 each.....	60.00
6 small chairs, \$10 each.....	60.00
1 wash stand.....	1.00
1 mirror.....	1.00
1 clock.....	5.00
1 typewriter.....	10.00
1 dining-room chair.....	2.50
Total.....	\$ 487.50

BOARD OF HEALTH—THREE ROOMS.

4 book cases, walnut, \$10 each.....	40.00
1 rack for papers, 8 feet high.....	3.00
2 walnut desks; 1 rolling top, \$25; 1 flat top, \$20.....	45.00
1 oak desk, \$8; 1 standing desk, \$4.....	12.00
1 typewriter with desk.....	75.00
2 tables, 8 feet and 9 feet long, \$6 each.....	12.00
2 tables, 5 feet long, \$4 each.....	8.00
1 table, 2 feet long.....	2.00
1 table, 6 feet long, \$2.50; 1 table, 50 cents.....	3.00
1 shelf, 5 feet wide, \$8; 1 glass case, \$10.....	18.00
3 revolving book cases, \$8 each.....	24.00
2 stands for letter presses and scales, \$1 each.....	2.00
1 small case, \$3; 1 typewriter desk, \$4.....	7.00
1 letter press, \$10; 1 portable lamp, \$6.....	16.00
1 scale with case, \$20; 1 scale, \$2.....	22.00
1 dictionary with stand, \$12; 1 oil tester, \$5.....	17.00
16 cane chairs, \$3 each; 4 revolving chairs, \$3 each.....	60.00
1 settee, \$6; 4 chairs, 50 cents each, \$2.....	8.00
1 office stool, \$1; 1 mirror, \$2.....	3.00
1 microscope, \$250; 1 incubator, \$12.....	252.00
1 clock.....	8.00
1 sterilizer.....	5.00
1 adjustable seat, typewriter chair.....	6.00
19 square stands, \$1.50.....	28.50
Total.....	\$ 686.50

GEOLOGICAL SURVEY—THREE ROOMS.

1 desk, walnut, rolling top.....	\$ 25.00
1 desk, double, flat top.....	25.00
2 desks, flat top, 1 not in the home office.....	24.00
1 typewriter, with desk, in use four years.....	50.00
1 drawing table and map case.....	40.00
5 tables, dining-room, \$20 each.....	100.00
1 oak table, 4 feet.....	10.00
1 portable lamp.....	3.00
1 revolving chair.....	1.00
5 walnut arm chairs, \$15 each.....	75.00
3 dining-room chairs, \$2.50 each.....	7.50
1 adjustable book stand.....	10.00
1 letter press.....	8.00
1 dictionary and stand.....	12.00
1 stand.....	1.00
1 mirror, 20x12, \$1; 1 drafting table, \$5.....	6.00
1 mineral case, 28 feet.....	280.00
2 wall frames for pictures, \$35 each.....	70.00
3 specimen cases, \$100 each.....	300.00
3 cases for books and supplies \$40 each.....	120.00
1 microscope in Iowa City.....	125.00
2 barometers, \$50 each.....	100.00
3 cameras.....	175.00
Total.....	\$ 1,567.50

GRAND ARMY ROOM.

1 counter, 12 feet long.....	\$ 95.00
1 desk, 10 feet long.....	60.00
1 book case, 12 feet.....	75.00
1 wardrobe and one case for banner.....	30.00
1 double desk.....	150.00
1 single desk.....	54.00
1 table, 8 feet, mahogany.....	80.00
1 table, 5 feet, mahogany.....	48.00
2 revolving chairs, mahogany, \$36 each.....	72.00
10 chairs, mahogany, \$19.44 each.....	194.40
1 lounge, leather.....	60.00
1 mirror, 38x18.....	10.00
1 portable lamp.....	5.00
2 dining-room chairs, \$2.50 each.....	5.00
1 kitchen table.....	1.00
Total.....	\$ 939.40

SUPPLY DEPARTMENT.

2 tables, 6 feet, \$40 each.....	\$ 80.00
1 dining-room table.....	20.00
1 square table.....	15.00
1 oak table.....	8.00
1 typewriter desk.....	5.00
2 portable lamps, \$5 each.....	10.00
1 Shannon file case.....	10.00
2 dictionaries with stands, \$12 each.....	24.00
1 revolving book case.....	12.00
1 walnut desk.....	25.00
1 adjustable book stand.....	10.00
1 clock.....	2.50
1 paper tester.....	75.00
1 case for drawings.....	15.00
4 revolving chairs, \$20 each.....	80.00

1 revolving chair, upholstered.....	\$ 8.00
5 arm chairs, \$15 each.....	75.00
1 typewriter stand.....	5.00
1 typewriter tabular cover.....	87.75
3 small chairs, \$10 each.....	30.00
1 mirror, 40x15.....	5.00
1 mirror, 30x15.....	3.00
1 mirror, 26x15.....	2.00
1 wall desk.....	2.00
1 standing desk.....	25.00
2 small cases.....	4.00
1 pigeonhole case.....	12.00
2 adjustable seats.....	11.75
1 scale.....	7.00
1 copy holder.....	3.75
1 letter press and stand.....	
1 steel case.....	527.00
Total.....	\$ 1,199.75

DOCUMENT AND PACKING ROOM—FOUR ROOMS.

1 desk, walnut, flat top.....	\$ 8.00
1 desk top.....	3.00
2 tables with two cases.....	30.00
3 dining-room tables, \$20 each.....	60.00
1 packing table.....	3.00
1 small shelf case.....	1.50
1 portable lamp.....	5.00
1 revolving chair.....	3.00
4 dining-room chairs, \$2.50 each.....	10.00
3 chairs, 50 cents each.....	1.50
1 folding table, 40x22.....	2.00
1 truck scale.....	10.00
2 counter scales, one at \$3.00 and one at \$1.50.....	4.50
1 truck, four wheels.....	50.00
1 truck, two wheels.....	15.00
1 truck, two wheels.....	10.00
1 table.....	4.00
Total.....	\$ 220.50

LABOR COMMISSION.

2 book cases, glass front, \$15.00 each.....	\$ 30.00
1 book case.....	10.00
1 pigeonhole case.....	10.00
1 standing desk.....	3.00
1 case with drawers.....	5.00
1 double desk, flat top.....	15.00
1 walnut table, 3 feet.....	3.00
1 typewriter, with desk.....	60.00
2 revolving chairs, \$20.00 each.....	40.00
8 cane chairs, \$3.00 each.....	24.00
1 stand for letter press.....	3.00
1 letter press.....	7.00
1 wash stand.....	6.00
1 office stool.....	1.00
1 dictionary and stand.....	12.00
1 mirror, 22x16.....	2.50
Total.....	\$ 231.50

CUSTODIAN'S OFFICE.

1 table, cherry, 8 feet.....	\$ 50.00
------------------------------	----------

1 desk	\$ 5.00
1 pigeon hole case	10.00
1 key case	15.00
1 book case	21.00
1 cherry wash stand	5.00
1 dictionary and stand	12.00
1 revolving chair	20.00
2 arm chairs, \$15.00 each	30.00
1 small chair	10.00
1 scale	2.00
1 portable lamp	5.00
1 gun case	8.00
1 engineer's level	100.00
2 revolvers, \$12.00 each	24.00

Total..... \$ 316.00

MINE INSPECTOR—ONE ROOM—THIRD DISTRICT.

3 book cases; 2 with glass front, \$15.00 each	\$ 45.00
1 double desk, flat top	20.00
1 oak desk	20.00
1 oak table	10.00
1 square table	10.00
1 stand for letter press	3.00
1 letter press	7.50
1 dictionary and stand	12.00
1 cane settee	5.00
5 cane chairs, \$3.00 each	15.00
1 typewriter and desk	85.00
3 revolving chairs, \$20.00 each	60.00
1 arm chair	15.00
1 portable lamp	5.00
1 test scale with case and 2 fifty-pound tests	125.00
1 case for samples	30.00
1 wash stand, marble top	8.00
1 mirror, 28x18 inches	2.00
1 anemometer	20.00
1 case for maps	3.00
1 dining-room chair	2.50

Total..... \$ 503.00

MINE INSPECTOR—FIRST DISTRICT, OTTUMWA.

1 desk	\$ 10.00
2 anemometer, \$20 each	40.00
1 scale and 3 fifty-pound test weights	100.00
1 water gauge	15.00
1 hydrometer	15.00

Total..... \$ 180.00

MINE INSPECTOR—SECOND DISTRICT—OSKALOOSA.

1 desk	\$ 10.00
1 anemometer	20.00
1 scale and 2 test weights	100.00
1 hydrometer	15.00

Total..... \$ 145.00

BOARD OF CONTROL—FIVE ROOMS.

4 pigeon-hole cases	\$ 150.00
3 flat top desks	79.00
2 roll-top desks	68.00

1 8-foot step ladder	\$ 1.44
2 mirrors	5.50
1 wood chair50
7 office chairs	35.00
36 oak chairs	117.00
300 filing cases	52.00
3 clocks	33.00
1 pigeon-hole case	11.00
1 card index and fillers	13.37
2 flat top desks	46.00
1 wardrobe	44.00
20 tables, various lengths	253.00
1 square table	10.00
4 mahogany desks	360.00
4 mahogany chairs, \$14.95 each	57.00
1 numbering machine	14.00
1 letter press stand	13.40
3 Remington typewriters, \$90 each	270.00
3 typewriter desks, \$27 each	81.00
3 tabulators, \$18 each	54.00
2 mahogany standing desks	275.00
1 Shannon file case	125.00
1 steel file case	35.00
3 adjustable seats	18.00
1 double roller shelf case	108.00
4 revolving stools	11.45
4 portable lamps	23.75
1 mimeograph	44.50
1 book case, 3 feet	6.50
1 book case 4 feet	7.25
1 mahogany file case	200.00
1 file case, drawers 3 feet high	25.00
1 scale	10.30
1 architect's case	40.00
4 cases not paid for

Total..... \$ 2,993.76

CORRIDOR—FIRST FLOOR.

1 counter	\$ 25.00
2 settees, \$15 each	30.00
1 frame for checking baggage	2.00

Total..... \$ 57.00

BATH ROOM.

1 wash stand	\$ 5.00
1 dining-room chair	2.50
1 mirror, 27x15	4.00

Total..... \$ 11.50

LAVATORY AND CLOSET—FIRST FLOOR.

1 mirror, 36x20	\$ 5.00
1 kitchen table	1.00

Total..... \$ 6.00

JANITOR'S ROOM—BASEMENT.

1 desk from old state house	\$ 1.50
2 chairs	1.00
1 portable lamp	2.50

Total..... \$ 5.00

LIBRARY STORE ROOM.

2 old chairs \$ 1.00

RESTAURANT.

1 dining-room table..... \$ 20.00
 3 old tables, \$2.00 each 6.00
 2 kitchen tables, \$1.25 each 2.50
 28 camp tables, 60 cents each 16.80

Total..... \$ 45.30

POSTOFFICE BASEMENT.

1 revolving chair..... \$ 2.50
 1 dining-room chair..... 2.50
 1 kitchen table 1.25
 1 wash stand..... 5.00

Total..... \$ 11.25

HISTORICAL BUILDING.

3 roll-top oak desks..... \$ 150.00
 1 desk, standing top..... 10.00
 1 desk for visitors' register..... 5.00
 1 desk, circular..... 15.00
 9 glass display cases at \$150.00..... 1350.00
 4 wall display cases at \$60.00..... 240.00
 1 insect case 35.00
 1 file case, 15 feet high 5.00
 1 file case 3.00
 1 oak map case..... 70.00
 17 steel book cases.....
 11 steel newspaper cases.....
 2 show cases, glass top, at \$60.00..... 120.00
 7 autograph cases at \$300.00..... 2100.00
 1 book case, 4½ feet high 10.00
 1 book case 15.00
 1 circular upholstered settees at \$100.00..... 200.00
 1 Davenport 100.00
 1 sofa and 2 chairs, upholstered 50.00
 1 carved chair 50.00
 2 arm chairs 30.00
 6 small chairs 60.00
 2 revolving chairs at \$5.00 10.00
 4 office stools at 75 cts 3.00
 100 camp chairs at \$1.00 100.00
 6 leather upholstered rockers at \$40.00 240.00
 24 leather upholstered chairs at \$20.00 480.00
 2 leather upholstered revolving chairs at \$25.00 50.00
 7 oval oak tables at \$50.00..... 350.00
 3 dining-room tables at \$20.00 60.00
 1 oak table, 6 feet..... 30.00
 3 kitchen tables at \$1.00 3.00
 1 round table..... 1.00
 1 stand for letter press..... 1.00
 1 letter press..... 5.00
 1 typewriter..... 90.00
 1 typewriter with desk..... 110.00
 1 railing 10.00
 1 clock 10.00
 1 mirror, 18x12 1.50
 1 portable lamp 5.00
 1 book rack 5.00

1 dictionary and stand \$ 15.00
 1 folding bed..... 50.00
 1 fancy screen, oak 40.00
 1 cabinet..... 6.50
 1 mirror 2.50

Total..... \$ 6,296.50

ENGINEER'S ROOM AND CARPENTER SHOP.

1 desk \$ 5.00
 1 book case, glass doors..... 10.00
 1 book case 10.00
 1 revolving chair..... 5.00
 1 letter press and stand 8.00
 3 old cases 6.00
 2 sections drafting table 10.00

Total..... \$ 54.00

MILK TESTING ROOM.

2 tables \$ 3.00
 1 steam testing machine..... 15.00
 1 hand testing machine..... 2.00
 1 chair 1.00
 1 portable lamp 2.00

Total..... \$ 23.00