

1988

ANNUAL REPORT

OF THE

IOWA RACING COMMISSION



The Honorable Terry E. Branstad,
Governor of Iowa

INTRODUCTION

IOWA RACING COMMISSION
Lucas State Office Building
Des Moines, Iowa 50319

The Honorable Terry E. Branstad
Governor of the State of Iowa
State House
Des Moines, Iowa 50319

Dear Governor Branstad:

In compliance with Chapter 99D, Iowa Code, the Iowa State Racing Commission submits herewith its Fifth Annual Report, covering the period of January 1, 1988, through December 31, 1988.

Respectfully yours,



MICK R. LURA
Administrator

IOWA RACING COMMISSION

L.C. "Bud" Pike, Chairman
Lavonne Mydland
Richard Canella, Member

Dr. Sally Brown Prickett,
Vice-Chairman
Leo Monaghan, Member

TABLE OF CONTENTS

Letter to Governor	1
Commission Members	2
Projections for 1989	3
Dubuque Greyhound Park Season Summary	5
Bluffs Run Season Summary	7
Waterloo Greyhound Park Season Summary	9
Iowa Breeders' Fund	11
Breakage From Breeders' Fund	14
Laboratory Summary	15
Harness Racing At The Fairs	19
Financial Position	17
Statement of Expenditures	18
Statement of Occupational Greyhound License Fees	20
Statement of Occupational Standardbred Fees	21
Commission Meetings	22
Iowa's Wagering Dollar	24
Staff Members	25

LETTER TO THE GOVERNOR

The Honorable Terry E. Branstad
Governor of Iowa
Capitol
L O C A L

December 31, 1988

Dear Governor Branstad:

The 1988 calendar year is behind us and it is again time to reflect back to see what the pari-mutuel industry has done for the state of Iowa this past year. The pari-mutuel law has been on the books for over five years now and the Commission has gained in maturity through exposure to this new industry in our state. In addition, the successes that our tracks have achieved have brought favorable nationwide attention to Iowa.

First, I would like to talk about the people involved. Jack Ketterer's resignation just before the end of the year left the Commission searching for a replacement. Mick Lura, former Director of Administration for the Commission, was hired as Administrator. His experience of five years in the pari-mutuel industry in Iowa found him to be head and shoulders above the other applicants. Dr. Sally Prickett resigned to undertake the contract as state veterinarian at Bluffs Run in Council Bluffs beginning January 1, 1989. In her capacity, she will be able to assist the Racing Commission staff in the equine and canine sectors of racing on a statewide basis. Richard Canella, resident of Fort Madison and former officer of the Shaeffer Pen Company, was appointed to replace former Commissioner Larry Scalise. The Commission continues to work closely with the Department of Criminal Investigation and this partnership has thus far paid off in keeping the criminal element out of the pari-mutuel industry in Iowa.

In 1988, our tracks continue to do well as a whole. The tax revenue provided to the state was \$11,838,903, plus \$911,082 in unclaimed tickets, totaling \$12,749,985 of direct revenue to Iowa from these two sources.

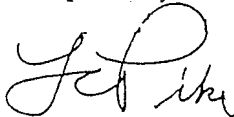
Waterloo Greyhound Park suffered a set back due to an early starting date in September. Some legislative relief appears underway that should help Waterloo in the 1989 season and over a long period of time for that matter. Waterloo's strong finish this past spring positions that track well for the upcoming season and could give them their best season ever.

Bluffs Run saw a slippage of total handle due mainly to year round wagering across the river in Omaha where simulcasting has brought about tough competition for other bettors' dollars. Dubuque Greyhound Park totals continue to grow and look impressive and again in 1988 this track set a record in betting handle. All in all, greyhound racing in Iowa has continued to be successful and has brought a lot of entertainment to our state.

The Prairie Meadows horse track appears to be ready for completion on or before March 1, 1989. Not only has this track come in on time, but it has been built at \$3.5 million under budget (which is unheard of in the construction of modern day race tracks). It is going to be a beautiful facility and we feel confident that it will be successful in bringing a new dimension of entertainment to Des Moines, as our capitol city strives to improve its reputation as Iowa's leading convention center.

Three active greyhound tracks and a new horse track in Iowa deliver to the Commission a full platter of activity which keeps each member on a fast track. We are especially appreciative of the Governor's office for its backing and support throughout the year and look forward to working with you in 1989.

Respectfully submitted,



L. C. Pike
Chairman

IOWA RACING COMMISSION MEMBERS



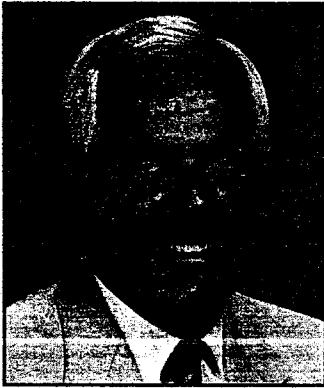
SALLY PRICKETT, DVM, Vice-Chairman
Cumming
Term Expires: April 30, 1991



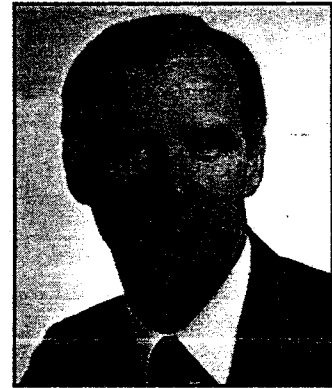
L.C. "BUD" PIKE, Chairman
Grundy Center
Term Expires: April 30, 1991



LAVONNE MYDLAND
Rock Rapids
Term Expires: April 30, 1990



RICHARD CANELLA
Fort Madison
Term Expires: April 30, 1992



LEO K. MONAGHAN
Manchester
Term Expires: April 30, 1990

COMMISSION EXECUTIVE STAFF



JACK P. KETTERER
Executive Director



MICK LURA
Director of Administration

PROJECTIONS FOR 1989

The face of racing in Iowa continues to change and 1989 should be no different. The eyes of the racing world will be on Iowa when the Racing Association of Central Iowa opens Prairie Meadows Horse Racing facility on March 1, 1989. Prairie Meadows will be the fourth major horse track to open in the United States in recent years. Of the three previous openings, two have had financial problems, but the third, Remington Park, is proving to be a great success. Prairie Meadows has the potential to follow in Remington's footsteps. A number of factors are favorable for the success of Iowa's newest race track. The construction budget of \$52 million is reasonable and current projections show that the Racing Association of Central Iowa will complete the project up to \$4 million under budget. The management of Prairie Meadows has set attainable attendance and handle goals for 1989 with one of the most attractive horse racing tax incentives in the nation.

While the racing industry is buzzing about the new horse racing facility in Altoona, Iowa's greyhound tracks have continued their successful operations. The outlook for 1989 is excellent for greyhound racing in Iowa. We expect that new competitive factors and the opening of the horse track in Altoona will have some negative impact upon the three existing Greyhound facilities, but we expect that impact to be minimal. Bluffs Run boasted attendance and handle figures of 1,107,106 and \$122,165,062 respectively. These totals find Bluffs Run one of the leading greyhound tracks in the Nation. In 1989 Bluffs Run should receive additional competition from simulcast facilities in Nebraska and will feel a very small impact due to the opening of horse racing at Prairie Meadows. The outlook for Bluffs Run 1989 season is still bright although some decline from 1988 may be seen.

Dubuque Greyhound Park continues to set record handles each year. In 1988 the handle at Dubuque was \$66,892,630, surpassing their 1987 handle. The outlook for Dubuque Greyhound Park in 1989 is excellent. There should be negligible impact upon Dubuque Greyhound Park from horse racing in Altoona, and everyone is anticipating Dubuque improving upon the 1989 season. Dubuque Greyhound Park management will be keeping a close eye on neighboring Wisconsin since the Wisconsin Racing Board is expected to issue greyhound licenses for that state during the first half of 1989, and these licenses will most likely have a negative impact upon Dubuque's operation in 1990 and beyond.

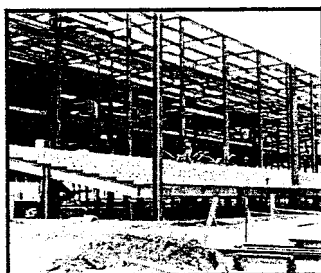
Waterloo Greyhound Park completed its second season in April of 1988 with a handle of \$33,427,585 reflecting a 10% increase over their inaugural season. Waterloo Greyhound Park opened its 1988-89 season five weeks earlier than normal. This was a one year experiment that was tried in order to minimize competition with the initial season of horse racing in Altoona in the spring of 1989. This particular experiment was not very successful as Waterloo started their 88-89 season with a dramatic drop in wagering. The outlook for Waterloo Greyhound Park in 1989 is both bleak and bright. The 88-89 season will show a decline because of the early start in 1988. However, the outlook for the season beginning in 1989 and ending in 1990 is bright because Waterloo returns to their traditional racing dates and the expectation is that they will obtain 1987 results if not better.

This year Iowa's racing puzzle will be complete. The racing industry in Iowa will be fully developed in 1989. Expected attendance and handle should reach 2,300,000 and \$275,000,000 respectively. These results are far more than anyone dreamed about when pari-mutuel was first legalized in 1983.

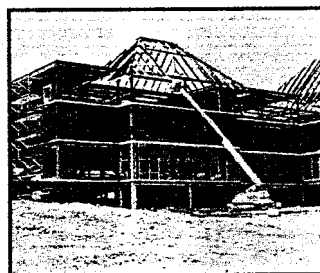
Construction of Prairie Meadows began August 25th, 1987.



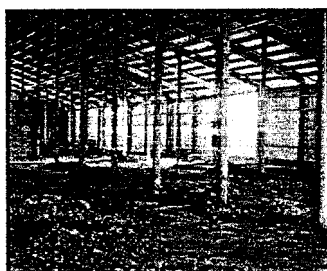
*Grandstand
March 4, 1988*



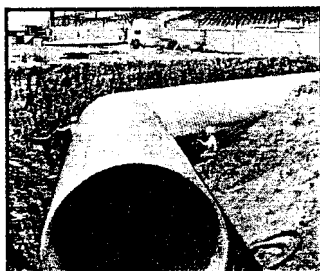
*Grandstand
April 25, 1988*



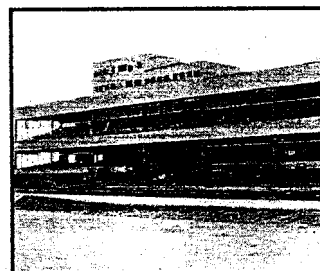
*Grandstand
May 13, 1988*



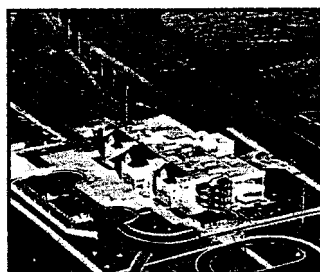
*Inside view of
one of 16 barns
June 1, 1988*



*Tunnel leading to
"Winners Circle"
July 7, 1988*



*Grandstand
September 17, 1988*



*Aerial View
December 21, 1988*

IOWA'S RACE TRACKS

DUBUQUE GREYHOUND PARK

Dubuque Greyhound Park located in Dubuque, raced 240 performances in 1988 beginning April 6 and ending November 13. The average handle was \$278,719 with an average daily attendance of 2,424 patrons wagering on the greyhounds.

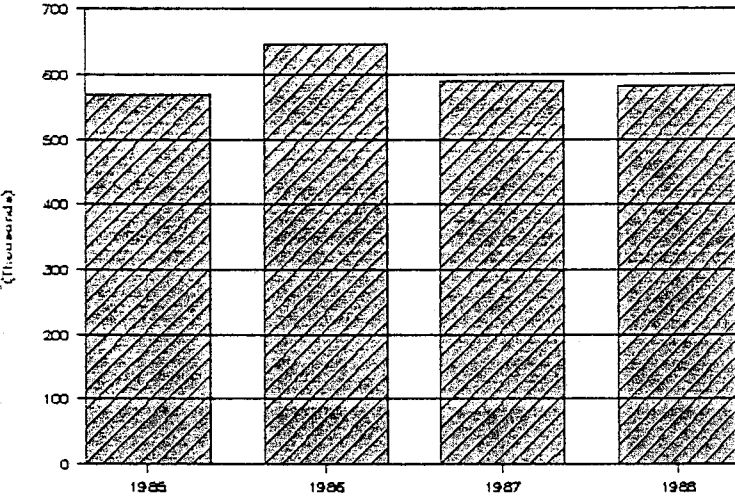
THE SEASON SUMMARY IS AS FOLLOWS:

Racing Dates	4-6 - 11-13
Number of Performances	240
Average Attendance Per Performance	2,424
Total Taxable Attendance	581,865
Daily Average Handle Per Performance	\$ 278,719
Total Mutuel Handle	\$66,892,630
Exotic Wagering	\$55,281,097
Track Commission	\$ 7,794,885
Breakage	\$ 232,631
State Tax	\$ 3,344,631
City/County Tax	\$ 668,927
Returned to Public	\$54,851,556
Purses	\$ 2,006,779
Additional Monies for Purses	\$ 44,000
Unclaimed Winnings	\$ 290,015

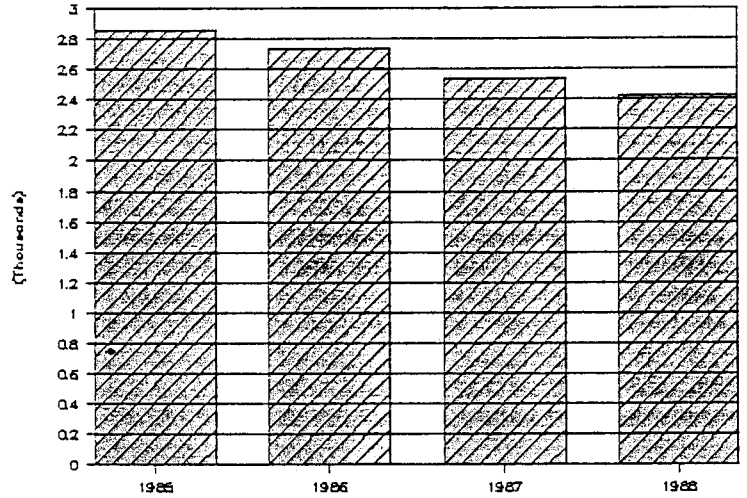
DUBUQUE GREYHOUND PARK COMPARISON

	1985	1986	1987
Racing Dates	6-1/11-17	4-1/11-2	4-1/11-1
Number of Performances	198	236	232
Average Attendance Per Performance	2,856	2,734	2,540
Total Taxable Attendance	569,407	654,212	589,317
Daily Average Handle Per Performance	\$218,273	\$269,279	\$283,504
Total Mutuel Handle	\$41,690,178	\$63,644,286	\$65,773,036
Breakage	\$237,970	\$237,721	\$228,620
Unclaimed Winnings	\$58,400	\$239,943	\$296,965

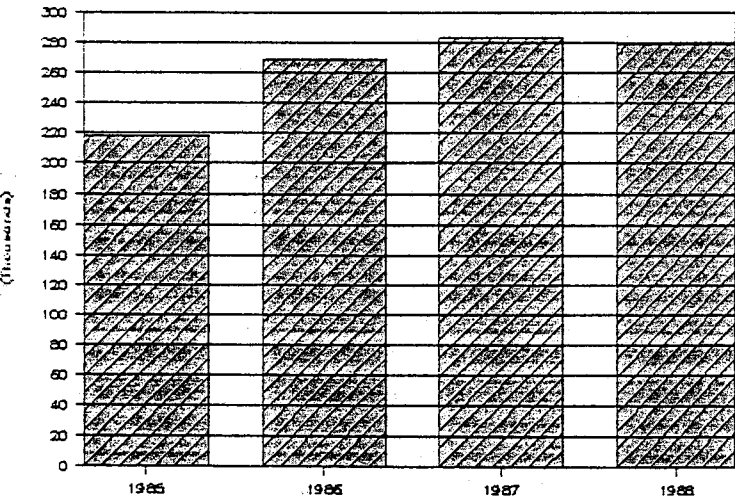
DUBUQUE GREYHOUND PARK
TOTAL TAXABLE ATTENDANCE



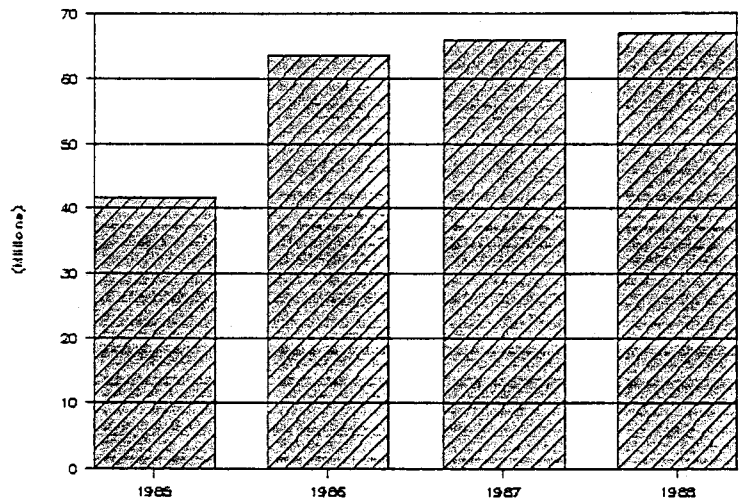
DUBUQUE GREYHOUND PARK
AVERAGE ATTENDANCE PER PERFORMANCE



DUBUQUE GREYHOUND PARK
AVERAGE HANDLE PER PERFORMANCE



DUBUQUE GREYHOUND PARK
TOTAL HANDLE



BLUFFS RUN

Bluffs Run located in Council Bluffs, conducted greyhound racing on an almost year round basis in 1988. Their season began January 8 and ended December 31 racing 458 performances.

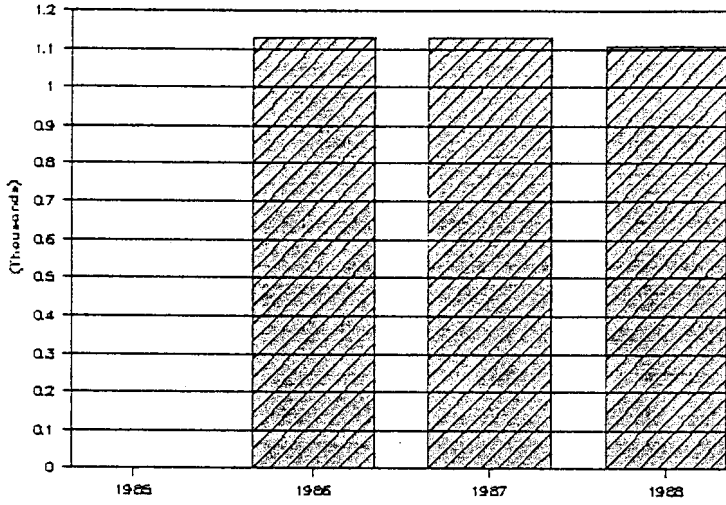
THE SEASON SUMMARY IS AS FOLLOWS:

Racing Dates	1-8 - 12-31
Number of Performances	458
Average Attendance Per Performance	2,417
Total Taxable Attendance	1,107,106
Daily Average Handle Per Performance	\$ 266,736
Total Mutuel Handle	\$122,165,062
Exotic Wagering	\$100,180,075
Track Commission	\$ 14,220,108
Breakage	\$ 443,282
State Tax	\$ 6,108,253
City/County Tax	\$ 1,221,651
Returned to Public	\$100,171,769
Purses	\$ 3,664,952
Additional Monies for Purses	\$ 12,300
Unclaimed Winnings	\$ 463,478

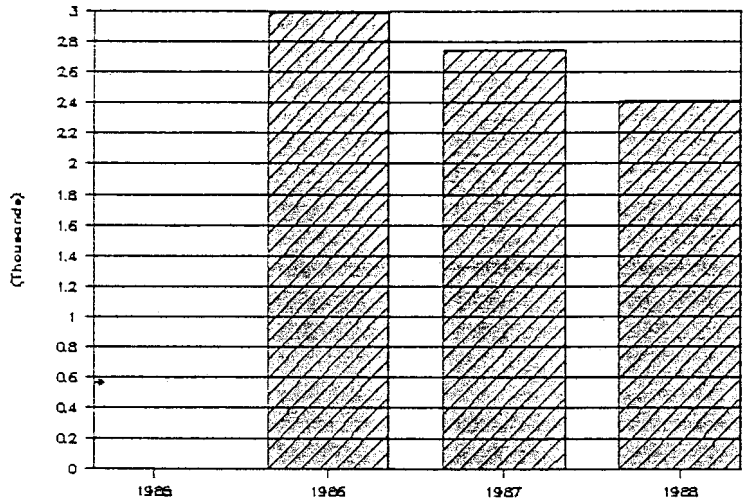
BLUFFS RUN COMPARISON

	1985	1986	1987
Racing Dates	2-27/12-15		1-31/12-14
Number of Performances	378		415
Average Attendance Per Performance	2,985		2,747
Total Taxable Attendance	1,128,203		1,131,725
Daily Average Handle Per Performance	\$324,010		\$299,164
Total Mutuel Handle	\$122,475,778		\$122,165,062
Breakage	\$455,565		\$445,223
Unclaimed Winnings	\$432,748		\$428,968

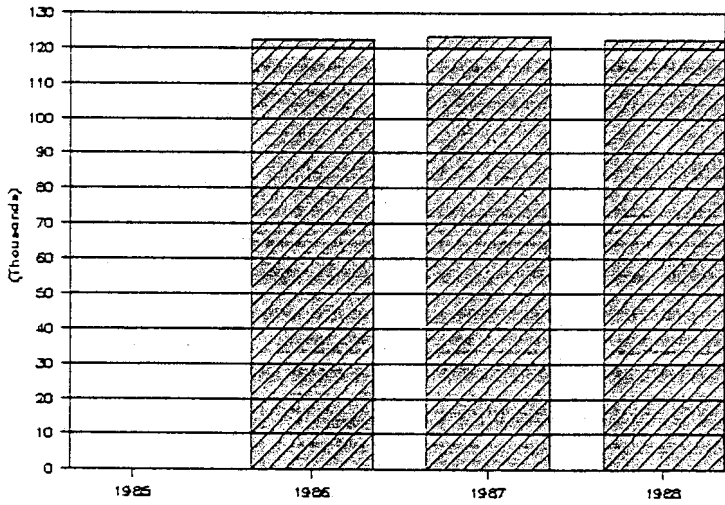
BLUFFS RUN
TOTAL TAXABLE ATTENDANCE



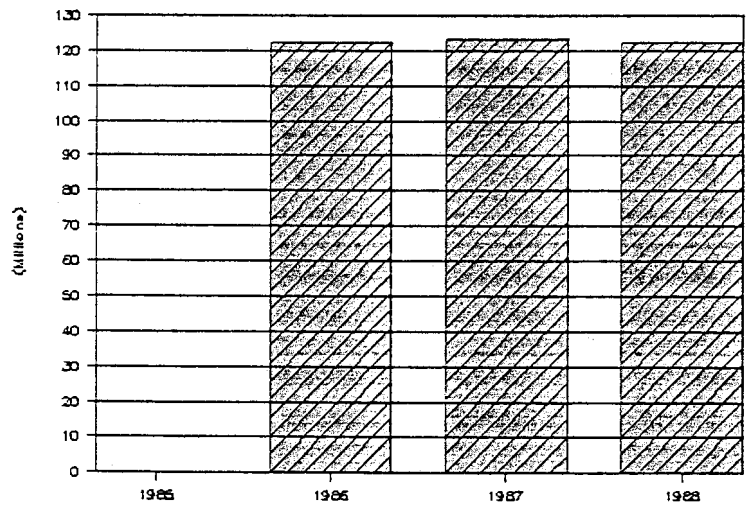
BLUFFS RUN
AVERAGE ATTENDANCE PER PERFORMANCE



BLUFFS RUN
AVERAGE HANDLE PER PERFORMANCE



BLUFFS RUN
TOTAL HANDLE



WATERLOO GREYHOUND PARK

Waterloo Greyhound Park, located in Waterloo completed its third winter season. Operating September 6, 1988, through March 12, 1989, for a total of 222 performances.

THE SEASON SUMMARY IS AS FOLLOWS:

Racing Dates	9-6-88 - 3-12-89
Number of Performances	222
Average Attendance Per Performance	1,076
Total Taxable Attendance	238,814
Daily Average Handle Per Performance	\$ 130,603
Total Mutuel Handle	^{32,427,585} \$28,993,917
Exotic Wagering	\$24,981,257
Track Commission	\$ 3,399,017
Breakage	\$ 73,834
State Tax	\$ 1,449,696
City/County Tax	\$ 289,939
Returned to Public	\$23,781,432
Purses	\$ 876,851
Additional Monies for Purses	\$ 16,700
Unclaimed Winnings	\$ 147,619

WATERLOO GREYHOUND PARK COMPARISON

	1985	1986	1987
Racing Dates	10-15-86/04-15-87	10-16-87/4-17-88	
Number of Performances	213	234	
Average Attendance Per Performance	1,513	1,247	
Total Taxable Attendance	322,272	291,733	
Daily Average Handle Per Performance	\$137,778	\$138,579	
Total Mutuel Handle	\$29,346,834	\$32,427,585	
Breakage	\$109,291	\$106,299	
Unclaimed Winnings	\$134,418	\$235,944	

IOWA BREEDER'S FUND

IOWA SUPPLEMENTS

The Department of Agriculture maintains a data base of thoroughbreds, standardbreds and quarterhorses who have qualified to be Iowa-foaled horses, as well as greyhounds that have qualified as Iowa-whelped dogs according to Iowa Code Chapter 99D.22 and Administrative Rules of the Department of Agriculture. An amount equal to 12% of the winner's share of any purse won by an Iowa-foaled horse or Iowa-whelped dog is withheld by the licensee from the breakage and paid at the end of the race meeting to the Department of Agriculture. The Department of Agriculture in turn pays the breeder of the winning Iowa-foaled horse or breeder of the Iowa-whelped dog on December 31 of each year.

1988 Dubuque Classic



"SUCCESS IN MIND" Wins 1988 Dubuque Classic. Pictured, left to right: DGP Communications Director Don Hess, General Manager Roy Berger, Trainer Jack Smith, and Director of Racing Daniel Luciano. With Classic winner Success Is Mind are patrol judge Terry Schemmel and leadout Jeff Francois.

Iowa Bred Classic Captured By "Toddling On" at Waterloo Greyhound Park Purse \$19,000



Pictured left to right: Bob Hild, Director of Security for Waterloo Greyhound Park; Michael Malone, Leadout; Dale Livingston, Owner, Toddling On, Iowa Bred Champion; Dale Horan, Trainer and Sherck Kennel's Assistant Trainer; and Daniel J. Hartman, Assistant General Manager and Director of Racing for Waterloo Greyhound Park.

The amounts created from the total breakage were paid out as follows in 1988:

STANDARDBREDS

Breeder's Awards\$ 2,146.00
 Supplements\$27,227.00

GREYHOUNDS

Bluffs Run

Breeder's Awards\$ 39,812.11
 Supplements\$486,457.38
 Iowa Stakes\$101,045.30
 Carry-over\$.45

Dubuque Greyhound Park

Breeder's Awards\$ 35,767
 Supplements\$150,323
 Iowa Stakes\$ 50,108
 Carry-over\$ 37,248

Waterloo Greyhound Park

1987-1988 Season
 Breeder's Awards\$ 14,216
 Supplements\$ 54,600
 Iowa Stakes\$ 19,234
 Carry-over\$ 10.09

1988 Dubuque Au Revoir Stakes



Homesteader Mel Captures 1988 Au Revoir

Pictured, left to right: DGP General Manager Roy Berger, Dubuque Racing Association President Robert Ginter, Trainer Teresa Anderson, DGP Director of Racing Dan Luciano, and Bruce Wentworth, DGP Mutuels Manager. With Homesteader Mel is leadout Jeff Sullivan.

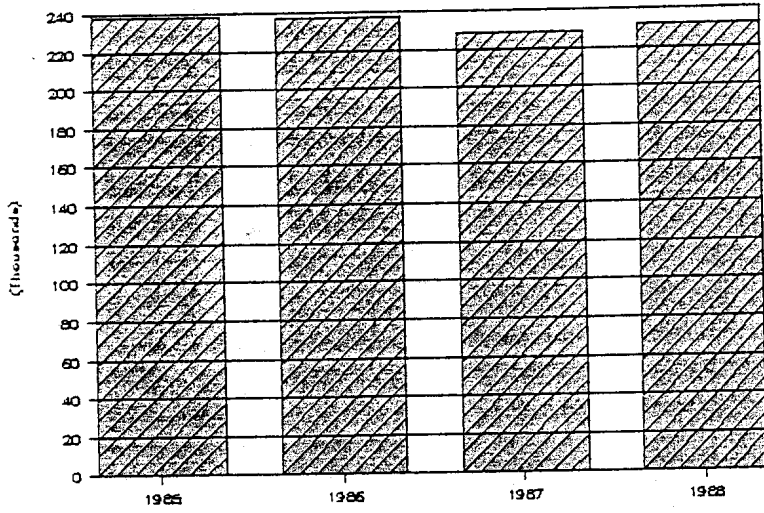
**Third Annual Waterloo Inaugural
 Won by "Stevie The K"**



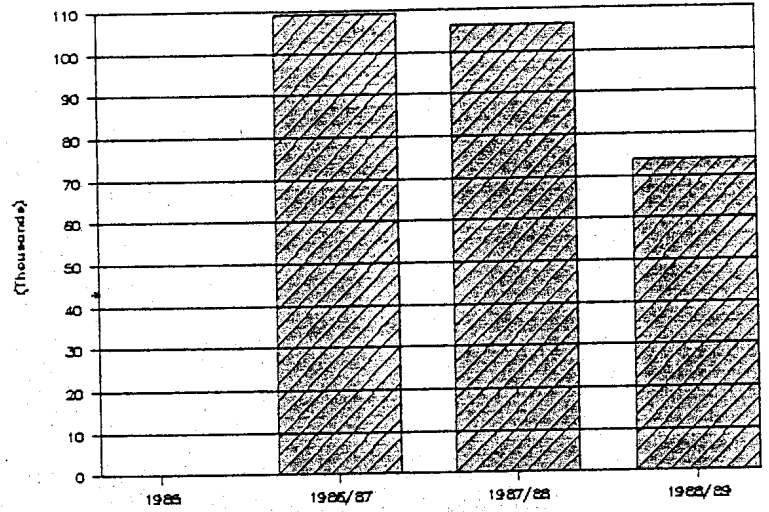
\$1,250 Purse

Pictured left to right: Daniel J. Hartman, Assistant General Manager and Director of Racing; Leo Monaghan, Iowa Racing Commissioner; L.C. "Bud" Pike, Iowa Racing Commission Chairman; Jack P. Ketterer, Iowa Racing Commission Administrator; Dan Hogan, Trainer for BNB Kennel; Tracy Wilharm, Kennel Assistant; August J. Masciotra, General Manager and Chief Executive Officer; and Shelli Wheatro, Leadout.

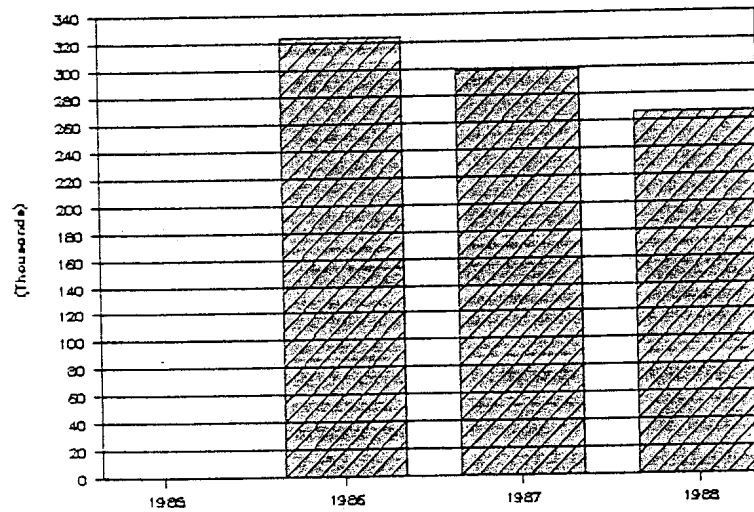
DUBUQUE GREYHOUND PARK
BREAKAGE (IOWA BREEDERS FUND)



WATERLOO GREYHOUND PARK
BREAKAGE (IOWA BREEDERS FUND)



BLUFFS RUN
BREAKAGE (IOWA BREEDERS FUND)



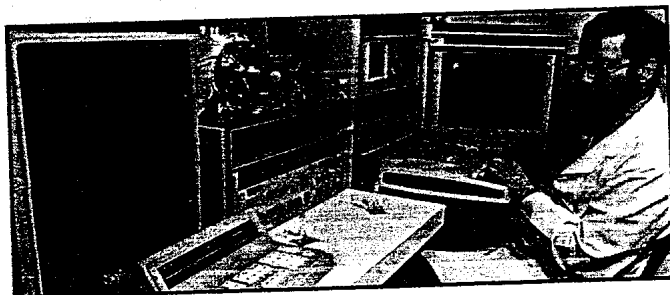
LABORATORY TESTING

The Iowa Racing Commission strives to protect the integrity of the sport of racing in Iowa. Iowa's blood/urine testing program is the backbone of the agency's policing functions. The program was conducted by Iowa State University Diagnostic Laboratory, of Ames, Iowa.

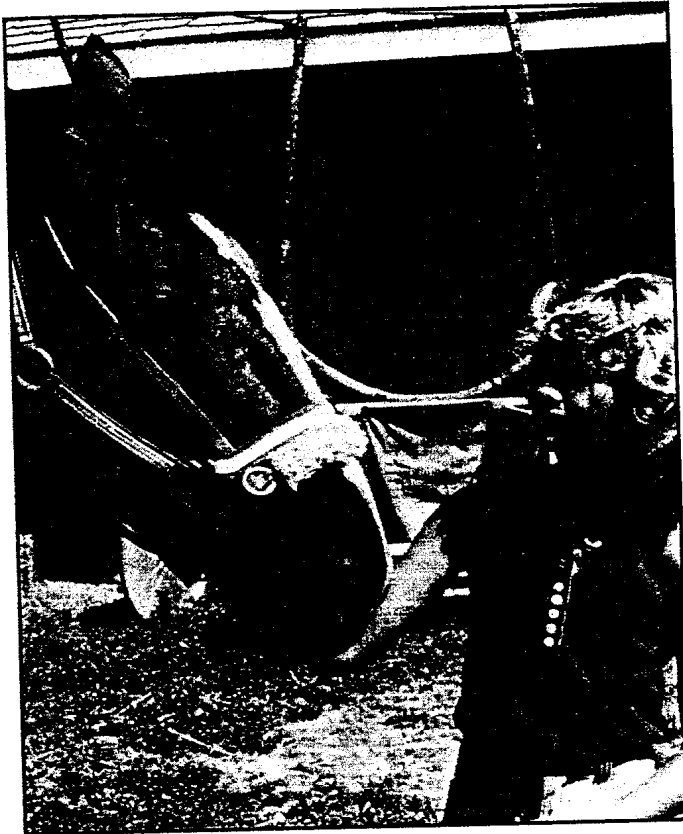
It is the duty of the Iowa Racing Commission, and its racing chemist, through chemical analysis of blood and urine samples collected from racing animals at the tracks, to insure that foreign substances are not being administered to racing animals pursuant to Iowa Code Chapter 99D.25 of the Iowa Pari-Mutuel Wagering Act. This section prohibits the administration of any foreign substance prior to a race. The Commission will continue to justify intense regulation to guarantee the racing industry in Iowa is above reproach.

The following is a summary of chemical tests conducted by the Iowa State Veterinary Diagnostic Lab in 1988 for the Iowa Racing Commission.

	URINE	BLOOD
Horse	186	54
Greyhound		
Bluffs Run	12,722	
Dubuque Greyhound Park	6,616	
Waterloo Greyhound Park	6,743	
	POSITIVE TESTS	
Horse		1
Polyethylene Glycol		1
Oxyphenbutazon		
Greyhound (Total All tracks)		44
Procaine		52
Trimethoprim		34
Polyethylene Glycol		5
DMSO2		18
Sulfamethoxazole		5
Sulfa Drug		7
Sulfamethazine		1
Phenylbutazone		5
Nicotinamide		4
Hydroxphenbutazone		1
Sulfamethoxadole		
TOTAL POSTIVIES		178



Dr. Walter Hyde, Official Chemist for the Iowa Racing Commission.



*"Classic Music" and groom, Ericka VandeVelde.
At the harness races, Des Moines fair circuit.*



*Stewards take a break between races at Bluffs Run. Pictured
left to right State Stewards; Richard Woodsmall and Virginia
Fuller, Association Steward; Ron Killpack.*



Iowa State Fair Commission Booth.

FINANCIAL POSITION

SOURCE OF REVENUE

During the reporting period, the Iowa Racing Commission operated as a self-funded unit. In Iowa, monies are collected from the racing industry to pay for its own regulation. This money is deposited into a revolving fund controlled by the Racing Commission and expenditures are made from that fund to regulate all aspects of the pari-mutuel racing industry in Iowa. During 1988, \$1,647,563 was received into the Iowa Racing Commission's revolving fund. During that period, the Racing Commission expended \$1,465,925 for regulation of the industry and for research projects to enhance and improve the pari-mutuel industry in the state of Iowa. (The remaining \$181,638 was carried over to 1988 to cover future expenses and research projects.)

Chapter 99D of the Code of Iowa provides several sources of revenue for the Iowa Racing Commission revolving fund. The racing licensees are taxed at \$200 per day of operation; there is a \$.50 per patron tax imposed; licensees reimburse the Commission for lab fees and audit expenses; fees set by the Commission are charged for occupational licenses; and disciplinary fines set by the Commission are imposed upon those licensees.

Racing Commission Operating Fund

Occupational License Fees	\$ 31,003
Track Daily License Fees	\$ 142,500
Admission Tax	\$ 1,063,203
Fines	\$ 14,960
Statutory Reimbursements	\$ 395,897
TOTAL REVENUE TO COMMISSION	\$ 1,647,563
TOTAL EXPENDITURES BY COMMISSION	\$ 1,465,925
Carryover for Future Expenses/Industry Research	\$ 181,638

Receipts to State and Local Governments

State pari-mutuel tax	\$10,927,821
Uncashed Pari-Mutuel tickets to state	\$ 911,082
TOTAL REVENUE TO STATE	\$11,838,903
TOTAL REVENUE TO LOCAL GOVERNMENT	\$ 2,180,516

STATEMENT OF EXPENDITURES

January 1 to December 31, 1988

Payroll	\$ 516,135
Professional Services	
Veterinarian	\$ 188,181
Laboratory	\$ 373,802
Criminal History Checks	\$ 20,552
Consultants	\$ 3,207
Travel	\$ 63,662
TOTAL SERVICE EXPENDITURES	\$1,165,539
Office Supplies	\$ 54,828
Printing	\$ 2,892
Communications	\$ 11,361
Rentals	\$ 1,730
Outside Services (General)	\$ 13,358
Equipment Repairs	\$ 1,145
Data Processing	\$ 20,966
Equipment	\$ 1,048
Public Relations	\$ 38,117
Capital Improvements	\$ 4,074
Reimbursements to Other State Agencies	\$ 10,030
TOTAL OFFICE EXPENSES	\$ 159,549
RESEARCH FUNDS	
Iowa State University College of Vet Medicine	\$ 100,000
Simulcast Study	\$ 40,837
TOTAL RESEARCH FUNDS	\$ 140,837
TOTAL EXPENDITURES	\$1,465,925

COUNTY FAIRS - HARNESS

Harness racing has been conducted at state and county fairgrounds since 1985. Playing host to the harness meet in 1988 were the Iowa State Fairgrounds and What Cheer, awaiting the moment Iowa's first horse racetrack "Prairie Meadows" would open in March of 1989.

Season Summary

Racing Dates	Des Moines	What Cheer
	6-3 — 6-5	7-8 — 7-10
	6-9 — 6-11	
	6-16 — 6-19	
	6-23 — 6-26	
	6-30 — 7-4	
Number of Performances	19	3
Total Mutuel Handle	2,154,158	97,127
Total Exotic	1,343,130	43,227
Net Track Commission	242,278	10,577
State Tax	107,708	4,856
City/County Tax	21,542	971
Breakage	20,127	1,033
Return to Public	1,762,503	79,689
Purse	128,600	16,500
Attendance	33,061	1,836
TOTAL MEETS		2
TOTAL NUMBER OF RACE PERFORMANCES		22
AVERAGE ATTENDANCE PER PERFORMANCE		1,586
AVERAGE DAILY HANDLE PER PERFORMANCE		\$ 102,331
TOTAL MUTUEL HANDLE		\$2,251,285
TOTAL EXOTIC		\$1,386,357
TOTAL TRACK COMMISSION		\$ 252,856
TOTAL STATE TAX		\$ 112,564*
TOTAL CITY/COUNTY TAX		\$ 22,513**
TOTAL CREDIT FOR NEW CONSTRUCTION ON FACILITIES		\$ 109,837
TOTAL BREAKAGE		\$ 21,160
TOTAL RETURNED TO PUBLIC		\$1,842,192
TOTAL PURSE		\$ 145,100
TOTAL ATTENDANCE		34,897
UNCLAIMED WINNINGS		\$ 9,970

*\$2,727 to State General Fund

**Entire amount to State General Fund

STATEMENT OF OCCUPATIONAL GREYHOUND LICENSE FEES

Concession	721	@	5.00	3605.00
Mutuels	445	@	5.00	2225.00
Security	128	@	5.00	640.00
Parking/Admissions	130	@	5.00	650.00
Maintenance	147	@	5.00	735.00
Totalizator	31	@	5.00	155.00
Kennel Helper	126	@	5.00	630.00
Lead Out	196	@	5.00	980.00
Administration	62	@	5.00	310.00
Miscellaneous	5	@	5.00	25.00
Duplicate Licenses	109	@	5.00	545.00
Announcer	7	@	10.00	70.00
Veterinarian	3	@	10.00	30.00
Owners	987	@	10.00	9870.00
Officials	28	@	10.00	280.00
Trainers	64	@	10.00	640.00
Asst. Trainers	79	@	10.00	790.00
Board Members	35	@	10.00	350.00
Asst. Racing Secretary	4	@	10.00	40.00
Chart Writer	4	@	10.00	40.00
Track Superintendent	2	@	10.00	20.00
Partnerships	46	@	10.00	460.00
Trainer/Owner	4	@	20.00	80.00
Mutuel Manager	3	@	20.00	60.00
Asst. Manager	3	@	20.00	60.00
Racing Secretary	3	@	20.00	60.00
Concession Operator	9	@	20.00	180.00
Manager	3	@	20.00	60.00
Kennel Owner	47	@	20.00	940.00
Corporations	33	@	20.00	660.00
Ltd. Partnerships	3	@	20.00	60.00
Miscellaneous	2	@	20.00	40.00

TOTAL LICENSED

3469

25,290.00

STATEMENT OF OCCUPATIONAL HARNESS LICENSE FEES

Concession	37	@	5.00	185.00
Groom	122	@	5.00	610.00
Mutuels	91	@	5.00	455.00
Security	19	@	5.00	95.00
Administration	4	@	5.00	30.00
Maintenance	14	@	5.00	70.00
First Aid	2	@	5.00	10.00
Sound/Visual Techs	4	@	5.00	20.00
Parking/Admissions	14	@	5.00	70.00
Totalizator	1	@	5.00	5.00
Miscellaneous	14	@	5.00	70.00
Duplicate Licenses	1	@	5.00	5.00
Announcer	1	@	10.00	10.00
Owners	89	@	10.00	890.00
Officials	10	@	10.00	100.00
Trainers	3	@	10.00	30.00
Farrier	1	@	10.00	10.00
Driver/Jockey	10	@	10.00	100.00
Chart Writer	2	@	10.00	20.00
Outrider	2	@	10.00	20.00
Partnerships	13	@	10.00	130.00
Miscellaneous	3	@	10.00	30.00
Owner/Trainer/Driver	111	@	20.00	2220.00
Mutuel Manager	1	@	20.00	20.00
Racing Secretary	1	@	20.00	20.00
Concession Operator	5	@	20.00	100.00
TOTAL LICENSED	575			5,325.00

COMMISSION MEETINGS

During 1988, the Iowa Racing Commission met 11 times. In addition, one telephonic meeting was held. Minutes of each meeting are kept on file in the Commission office, and are available to the public upon request. Highlights of the meetings follow:

January 8, 1988 - The Racing Commission met in Council Bluffs, Iowa. Iowa bred purse supplement program, wagering format, grading system, racing officials, bond and minimum purse for Bluffs Run (BR) were approved. Stan Bowker consultant for the Racing Association of Central Iowa (RACI) gave a progress report. Gloria Sanders and Bob Hardison reported on direct payments to greyhound owners. Additional racing dates to Dubuque Greyhound Park (DGP) and an additional performance for Waterloo Greyhound Park (WGP) were granted. "FY88 research projects at Iowa State University (ISU) and a three year contract with ISU as the racing chemist were approved. A resolution in support of "Uniform Licensing for Pari-Mutuel Sports Act" was passed. Executive Session was held.

February 11, 1988 - Racing dates were granted to Iowa Fair Horse Racing, Ltd. Stan Bowker gave a progress report for RACI. A rule allowing a \$1 minimum wager on twin trifecta was emergency adopted. Approved racing dates of June 3 through July 10 for Iowa Fair Horse Racing, Ltd. A resolution in support of \$1 deduction from purses, matched by the tracks, to help fund the American Greyhound Council was passed. Executive Session was held.

March 7, 1988 - A progress report was given by Stan Bowker, RACI. The funding of a study of simulcasting horse and dog racing by Christiansen/Cummings Associates was approved. A panel discussion was held concerning the impact of pari-mutuel racing in Iowa. Participants are as follows: Bud Pike, Iowa Racing Commission; Arnie Honkamp, Dubuque Racing Association; John Nelson, Iowa West Racing Association; Dick Klingaman, National Cattle Congress; Bob Hardison, Iowa Greyhound Association; Richard Wilkey, Racing Association of Central Iowa; Sally Prickett, DVM, ISU; and Jack Ketterer, Iowa Racing Commission.

April 6, 1988 - The Racing Commission met in Dubuque, Iowa. Rules for daily triple wagering were final adopted. Iowa bred purse supplement program, grading system, racing officials, bond, wagering format and minimum purse for DGP were approved. Executive Session was held.

May 11, 1988 - Presentation to Larry Scalise, former Commissioner, who resigned April 5. Twin trifecta rules and claiming rule for Fair Harness Racing were adopted. Iowa bred purse supplement program, racing officials, bond, minimum purse and wagering format for Iowa Fair Horse Racing Ltd were approved. A construction and operations report was given by Bill Masterson, RACI. Executive Session was held.

COMMISSION MEETINGS — cont'd

May 26, 1988 - Racing dates of April 1 through November 5 were granted to DGP; January 6 through December 31 were granted to Bluffs Run; September 28, 1988, through April 1, 1989, were granted to WGP; and March 1 through November 6 were granted to RACI. Hearings were held on the appeals of James Zimmerman and Stephen Thompson. Executive Session was held.

July 19, 1988 - New Commission member Richard Canella was introduced. Bill Masterson, RACI, gave an update report. A 1988 season reports were given by Roger Roland, Iowa Fair Horse Racing Ltd.; and Augie Masciotra, WGP. A tax credit for Iowa Fair Horse Racing, Ltd of \$109,836.64 was approved. Hearing was held on the appeal of Marvin Anderson. Executive Session was held.

August 29, 1988 - Reports were given by Dan Fick, American Quarterhorse Association, and Bill Masterson, RACI. Iowa bred purse supplement program, grading system, racing officials, bond, purse, and wagering format for WGP were approved. Hearing held on the appeal of Danny N. Simmons. Emergency adopted Fair Information Practices Rules. Executive Session was held.

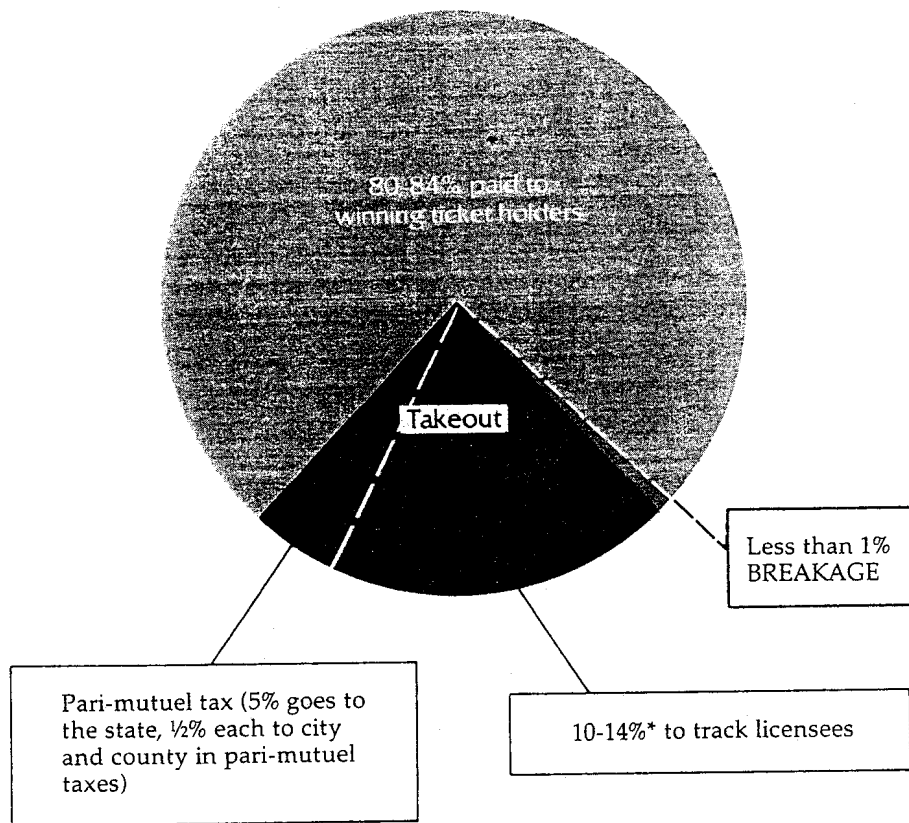
September 28, 1988 - The Racing Commission met in Waterloo, Iowa. "Additional racing dates of December 26-31 were approved, for Bluffs Run. An updated report was given by Bill Masterson. Entered into an agreement with Association of Racing Commissioners International to participate in the Quality Assurance Program for one year. Recap of simulcast study by Jack Ketterer. Executive Session was held.

November 1, 1988 - Executive Session was held. Jack Ketterer announced his resignation as Administrator for the Racing Commission effective the end of the year. Amendments to Chapters 4, 5, 7 and 8; Chapter 3, "Fair Information Practices Rules"; Chapter 10, "Thoroughbred Racing"; and Chapter 11, "Application for Tax Credit by Horse Racing Licensees," were adopted. Reports were given by Chuck Schott, Iowa Thoroughbred Association; and Bill Masterson, RACI.

November 18, 1988 - Telephonic meeting was held. Takeout of 20% on exacta or multiple wagering at Prairie Meadows was approved.

December 14, 1988 - The Racing Commission met in Council Bluffs, Iowa. Amendments to Chapters 7, 8 and 10 were emergency adopted and Chapter 9, "Harness Racing," was final adopted. Roy Berger, DGP, gave a 1988 season recap. A progress report of Prairie Meadows was given by Keith Hopkins, RACI. Mick Lura was appointed as Acting Administrator. The resignation of Dr. Sally Prickett from the Commission was announced. Executive Session was held.

IOWA'S WAGERING DOLLAR



*Actual percentage depends on type of wager. The takeout is 16% on win, place and show wagers. The Racing Commission may authorize the licensee to take out 16-20% on other wagers. Six percent is paid out in pari-mutuel taxes, as shown. The remaining 10-14% goes to the track licensee for purses, operating expenses, debt retirement and distribution to local charities, community betterment projects, scholarships, etc.

The Breakage (the odd cents by which the amount payable on each dollar wagered in a pari-mutuel pool exceeds a multiple of ten cents) is distributed to the breeders of Iowa-foaled horses and Iowa whelped dogs.

COMMISSION STAFF

Des Moines

Jack P. Ketterer
Mick Lura
Jean Cook
Kathleen Berglund
Karyl Jones
Ruth Dusterhoft

Administrator
Director of Administration
Administrative Assistant
Administrative Assistant
Secretary
Pari-Mutuel Auditor

Bluffs Run

John "Jake" McIsaac
Richard Woodsmall
Virginia Fuller
Lori Schultz
Lynne Rogers
Kathy Schaben
Strohbehm Clinic

Director of Greyhound Racing
Steward
Steward
Pari-Mutuel Clerk
Pari-Mutuel Clerk
Pari-Mutuel Clerk
Veterinarian

Dubuque Greyhound Park

Terrance Hirsch
Timothy Healy
Cathy Dillon
Julie Manders
Vanderloo & White Veterinary, P.C.

Steward
Steward
Pari-Mutuel Clerk
Pari-Mutuel Clerk
Veterinarian

Waterloo Greyhound Park

James Gibson
Lisa Reiker-Hall
Shirley Stokes
Jane Storey
Deb Aalfs
Brookside Veterinary Center

Steward
Steward
Pari-Mutuel Clerk
Pari-Mutuel Clerk
Pari-Mutuel Clerk
Veterinarian