

Food Assistance Report Series F-1

Report for January, 2020

Food Assistance Program - State Summary

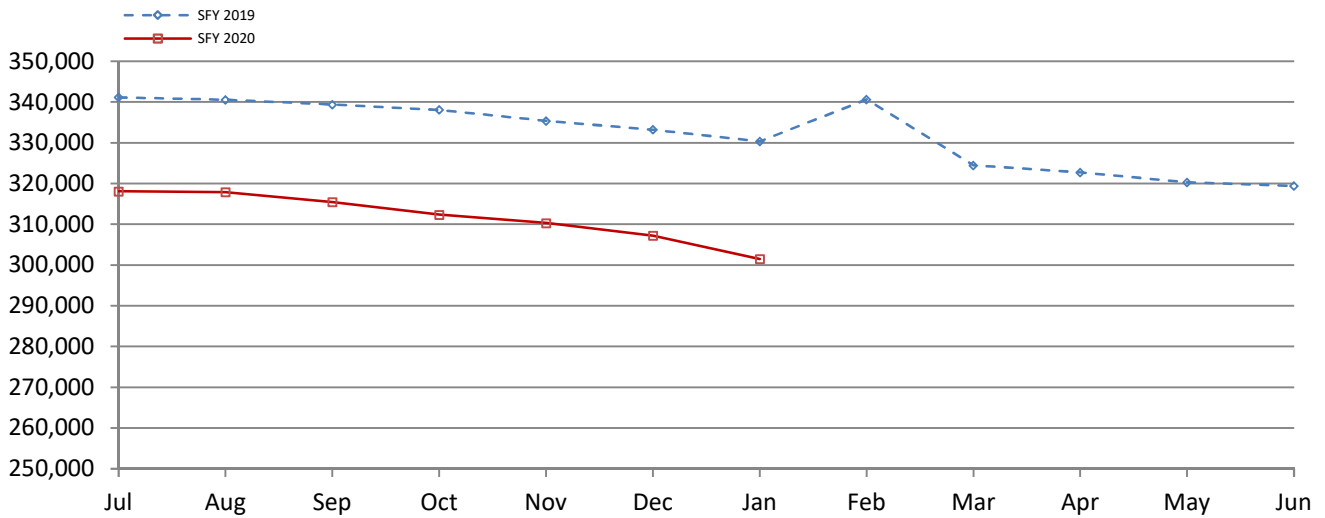
	January, 2020	December, 2019	January, 2019	% of Change Over Last Year
*Households				
FA/FIP	5,567	5,772	6,379	-12.7%
FA/Medical Assistance	126,599	127,845	135,175	-6.3%
FA/Hawki	692	733	763	-9.3%
FA Only	13,819	14,726	16,673	-17.1%
Total Households	146,677	149,076	158,990	-7.7%
*Recipients				
FA/FIP	14,148	14,752	16,318	-13.3%
FA/Medical Assistance	252,519	255,332	272,419	-7.3%
FA/Hawki	2,706	2,653	2,693	0.5%
FA Only	32,109	34,494	38,927	-17.5%
Total Recipients	301,482	307,231	330,357	-8.7%
*Allotments				
FA/FIP	\$2,290,446	\$2,411,146	\$2,610,714	-12.3%
FA/Medical Assistance	\$28,685,368	\$29,493,180	\$30,452,459	-5.8%
FA/Hawki	\$186,882	\$194,889	\$190,148	-1.7%
FA Only	\$2,100,975	\$2,337,047	\$2,576,476	-18.5%
Total Allotments	\$33,263,671	\$34,436,262	\$35,829,797	-7.2%
*Average Allotment per Household				
FA/FIP	\$411.43	\$417.73	\$409.27	0.5%
FA/Medical Assistance	\$226.58	\$230.69	\$225.28	0.6%
FA/Hawki	\$270.06	\$265.88	\$249.21	8.4%
FA Only	\$152.04	\$158.70	\$154.53	-1.6%
Overall Average per Household	\$226.78	\$231.00	\$225.36	0.6%
*Average Allotment per Recipient				
FA/FIP	\$161.89	\$163.45	\$159.99	1.2%
FA/Medical Assistance	\$113.60	\$115.51	\$111.79	1.6%
FA/Hawki	\$69.06	\$73.46	\$70.61	-2.2%
FA Only	\$65.43	\$67.75	\$66.19	-1.1%
Overall Average per Recipient	\$110.33	\$112.09	\$108.46	1.7%

State Fiscal Year to Date

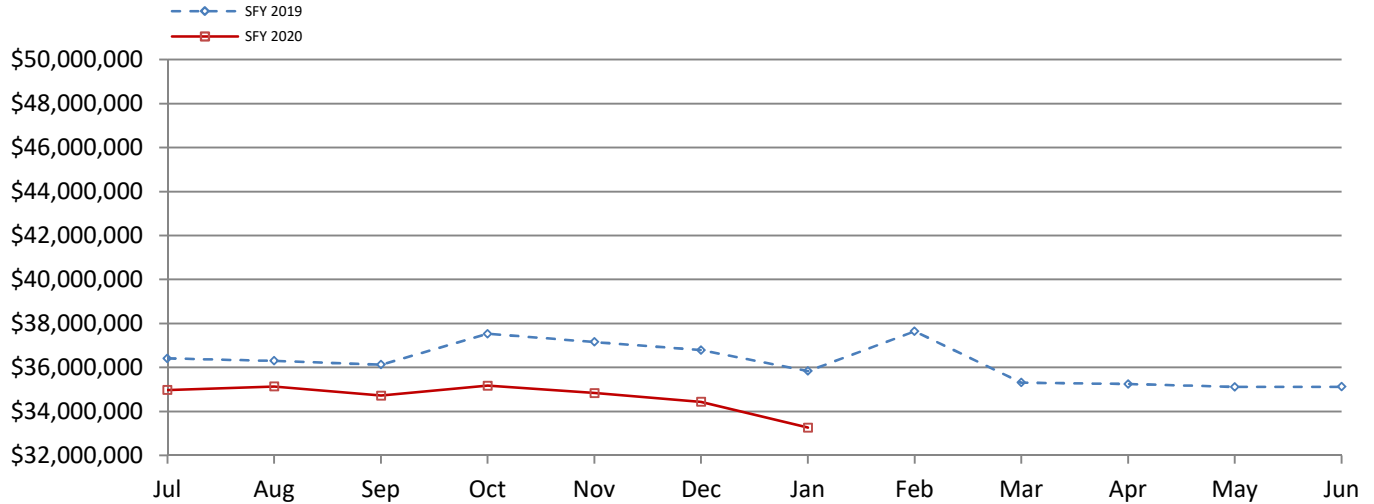
*Allotment	SFY 2020	SFY 2019	% of Change over Last Year
FA/FIP	\$17,281,196	\$19,250,419	-10.23%
FA/Medical Assistance	\$207,676,028	\$216,767,285	-4.19%
FA/Hawki	\$1,292,963	\$1,252,333	3.24%
FA Only	\$16,283,888	\$18,863,748	-13.68%
Total Allotment	\$242,534,075	\$256,133,785	-5.31%

Food Assistance Report Series F-1
Report for January, 2020

Total Food Assistance Recipients



Total Food Assistance Benefits



Food Assistance Report Series F-1
Report for January, 2020

Food Assistance Participation by Case Type and County

County	FA/FIP			FA/Medical Assistance			FA/Hawki			FA Only			Total			Participation Rate*
	Households	Recipients	Allotment	Households	Recipients	Allotment	Households	Recipients	Allotment	Households	Recipients	Allotment	Households	Recipients	Allotment	
Area 0 - DHS																
DHS	0	0	\$0	8	17	\$2,500	0	0	\$0	1	2	\$194	9	19	\$2,694	0.0%
Area Total	0	0	\$0	8	17	\$2,500	0	0	\$0	1	2	\$194	9	19	\$2,694	

Food Assistance Participation by Case Type and County

County	FA/FIP			FA/Medical Assistance			FA/Hawki			FA Only			Total			Participation Rate*
	Households	Recipients	Allotment	Households	Recipients	Allotment	Households	Recipients	Allotment	Households	Recipients	Allotment	Households	Recipients	Allotment	
Area 1 - Western																
Audubon	7	19	\$3,286	171	347	\$34,358	1	1	\$279	22	42	\$1,881	201	409	\$39,804	33.0%
Buena Vista	20	51	\$7,406	600	1,397	\$139,755	4	25	\$1,552	57	180	\$8,217	681	1,653	\$156,930	31.1%
Carroll	51	141	\$20,952	635	1,226	\$135,047	3	19	\$573	58	141	\$7,251	747	1,527	\$163,823	38.3%
Cass	16	37	\$6,418	638	1,249	\$129,136	4	16	\$1,013	60	143	\$6,754	718	1,445	\$143,321	38.6%
Cherokee	5	10	\$1,864	348	701	\$79,474	4	16	\$1,737	36	85	\$4,097	393	812	\$87,172	31.5%
Clay	25	72	\$10,686	610	1,146	\$119,682	7	25	\$1,826	57	145	\$6,218	699	1,388	\$138,412	36.7%
Crawford	54	148	\$22,740	559	1,203	\$131,234	2	11	\$285	53	127	\$5,201	668	1,489	\$159,460	27.3%
Dickinson	12	27	\$4,037	455	813	\$86,430	1	14	\$665	58	124	\$7,127	526	978	\$98,259	38.7%
Emmet	18	53	\$7,685	333	701	\$74,661	2	5	\$274	42	97	\$6,401	395	856	\$89,021	34.9%
Fremont	11	26	\$4,998	303	608	\$67,742	3	9	\$1,078	40	108	\$5,535	357	751	\$79,353	47.8%
Greene	18	48	\$8,449	361	726	\$72,336	1	5	\$128	29	75	\$4,646	409	854	\$85,559	36.4%
Guthrie	10	31	\$3,905	310	654	\$71,816	3	9	\$703	52	119	\$7,805	375	813	\$84,229	32.9%
Harrison	22	42	\$8,388	521	1,033	\$108,516	1	14	\$355	50	116	\$6,048	594	1,205	\$123,307	39.0%
Ida	4	10	\$1,653	214	460	\$46,216	1	10	\$13	21	56	\$3,152	240	536	\$51,034	31.7%
Kossuth	6	13	\$1,774	397	785	\$83,174	3	16	\$1,120	43	101	\$4,687	449	915	\$90,755	29.9%
Lyon	6	14	\$2,251	160	361	\$36,641	0	0	\$0	17	46	\$1,436	183	421	\$40,328	24.8%
Mills	18	44	\$7,598	454	926	\$104,890	2	11	\$234	49	143	\$7,352	523	1,124	\$120,074	38.5%
Monona	14	41	\$5,807	366	785	\$80,212	0	0	\$0	31	87	\$4,736	411	913	\$90,755	35.2%
Montgomery	29	65	\$10,331	616	1,239	\$136,309	0	0	\$0	53	127	\$7,959	698	1,431	\$154,599	44.2%
O'Brien	15	32	\$4,697	344	677	\$75,080	0	0	\$0	45	111	\$7,470	404	820	\$87,247	29.7%
Osceola	4	11	\$1,902	147	309	\$34,365	0	0	\$0	22	46	\$3,343	173	366	\$39,610	29.1%
Page	22	47	\$9,077	708	1,427	\$155,595	3	8	\$684	58	162	\$9,507	791	1,644	\$174,863	38.2%
Palo Alto	8	20	\$3,013	256	521	\$57,505	2	9	\$318	24	66	\$2,968	290	616	\$63,804	28.3%
Plymouth	17	41	\$6,190	466	942	\$101,384	1	12	\$151	53	120	\$7,943	537	1,115	\$115,668	25.9%
Pottawattamie	260	662	\$109,195	5,501	10,381	\$1,179,596	22	81	\$5,492	637	1,337	\$94,739	6,420	12,461	\$1,389,022	60.7%
Sac	8	22	\$4,298	235	485	\$50,878	3	10	\$1,057	37	88	\$3,478	283	605	\$59,711	31.6%
Shelby	11	25	\$4,625	365	753	\$81,508	1	5	\$304	33	84	\$4,295	410	867	\$90,732	32.5%
Sioux	10	24	\$3,684	413	906	\$91,131	6	15	\$1,898	49	128	\$7,002	478	1,073	\$103,715	18.0%
Taylor	10	29	\$4,512	223	471	\$47,575	0	0	\$0	21	60	\$4,112	254	560	\$56,199	31.5%
Woodbury	292	814	\$127,930	5,295	11,021	\$1,264,939	37	144	\$10,869	533	1,357	\$88,286	6,157	13,336	\$1,492,024	46.2%
Area Total	1,003	2,619	\$419,351	22,004	44,253	\$4,877,185	117	490	\$32,608	2,340	5,621	\$339,646	25,464	52,983	\$5,668,790	40.1%

Food Assistance Report Series F-1
Report for January, 2020

Food Assistance Participation by Case Type and County

County	FA/FIP			FA/Medical Assistance			FA/Hawki			FA Only			Total			Participation Rate*
	Households	Recipients	Allotment	Households	Recipients	Allotment	Households	Recipients	Allotment	Households	Recipients	Allotment	Households	Recipients	Allotment	
Area 2 - Northern																
Allamakee	13	30	\$5,269	375	876	\$94,540	3	8	\$532	45	110	\$5,599	436	1,024	\$105,940	30.1%
Black Hawk	487	1,234	\$197,456	6,944	13,192	\$1,485,014	37	130	\$8,495	772	1,730	\$115,967	8,240	16,286	\$1,806,932	46.3%
Bremer	19	46	\$7,514	426	896	\$91,693	6	27	\$1,147	51	125	\$4,260	502	1,094	\$104,614	30.2%
Buchanan	25	61	\$9,949	602	1,138	\$124,961	5	20	\$2,081	51	138	\$7,206	683	1,357	\$144,197	35.9%
Butler	19	38	\$6,232	367	776	\$81,299	3	20	\$899	51	122	\$7,377	440	956	\$95,807	36.6%
Calhoun	8	19	\$2,942	303	621	\$59,749	2	8	\$58	26	83	\$2,427	339	731	\$65,176	28.8%
Cerro Gordo	68	171	\$26,165	1,947	3,500	\$389,398	11	45	\$2,727	213	474	\$25,680	2,239	4,190	\$443,970	40.1%
Chickasaw	6	10	\$2,052	247	544	\$57,555	1	10	\$90	45	106	\$6,260	299	670	\$65,957	22.7%
Clayton	11	21	\$3,310	412	763	\$78,544	2	10	\$560	56	117	\$5,868	481	911	\$88,282	22.0%
Delaware	19	49	\$7,612	420	813	\$85,812	2	7	\$746	45	108	\$6,632	486	977	\$100,802	24.0%
Fayette	39	104	\$17,634	960	1,939	\$205,110	7	24	\$2,521	101	242	\$14,434	1,107	2,309	\$239,699	45.4%
Floyd	32	94	\$14,448	669	1,373	\$146,152	5	27	\$1,449	75	168	\$8,099	781	1,662	\$170,148	37.8%
Franklin	12	28	\$5,289	313	634	\$76,045	6	12	\$1,204	22	82	\$2,289	353	756	\$84,827	28.8%
Grundy	14	28	\$5,116	216	468	\$51,910	1	10	\$552	26	61	\$3,277	257	567	\$60,855	28.8%
Hamilton	9	21	\$3,360	395	773	\$82,839	5	15	\$1,883	49	106	\$8,250	458	915	\$96,332	25.9%
Hancock	5	17	\$2,279	238	488	\$56,388	2	8	\$473	18	72	\$2,591	263	585	\$61,731	27.5%
Hardin	18	42	\$7,898	553	1,208	\$126,893	2	7	\$402	70	175	\$12,163	643	1,432	\$147,356	40.2%
Howard	7	19	\$2,557	236	453	\$49,740	2	6	\$618	31	59	\$4,375	276	537	\$57,290	22.3%
Humboldt	8	23	\$3,379	280	607	\$62,589	0	0	\$0	29	78	\$3,908	317	708	\$69,876	27.4%
Marshall	72	182	\$28,334	1,682	3,636	\$391,231	6	33	\$928	192	488	\$28,507	1,952	4,339	\$449,000	44.7%
Mitchell	13	30	\$4,117	226	463	\$46,808	2	10	\$899	27	58	\$3,493	268	561	\$55,317	25.0%
Pocahontas	5	9	\$1,641	227	502	\$53,060	0	0	\$0	28	63	\$2,229	260	574	\$56,930	29.8%
Webster	110	276	\$42,926	2,153	4,089	\$470,304	12	33	\$4,891	176	430	\$25,889	2,451	4,828	\$544,010	50.5%
Winnebago	13	33	\$6,418	294	603	\$65,689	1	3	\$355	51	103	\$8,539	359	742	\$81,001	32.8%
Winneshiek	8	18	\$2,633	369	727	\$76,786	0	0	\$0	34	79	\$3,531	411	824	\$82,950	26.9%
Worth	4	9	\$1,513	204	445	\$52,079	0	0	\$0	22	65	\$4,187	230	519	\$57,779	29.7%
Wright	25	62	\$9,814	455	976	\$108,384	2	11	\$446	35	102	\$5,920	517	1,151	\$124,564	37.7%
Area Total	1,069	2,674	\$427,857	21,513	42,503	\$4,670,572	125	484	\$33,956	2,341	5,544	\$328,957	25,048	51,205	\$5,461,342	38.1%

Food Assistance Report Series F-1
Report for January, 2020

Food Assistance Participation by Case Type and County

County	FA/FIP			FA/Medical Assistance			FA/Hawki			FA Only			Total			Participation Rate*
	Households	Recipients	Allotment	Households	Recipients	Allotment	Households	Recipients	Allotment	Households	Recipients	Allotment	Households	Recipients	Allotment	
Area 3 - Eastern																
Cedar	8	22	\$3,619	379	808	\$89,877	2	6	\$352	37	129	\$5,692	426	965	\$99,540	31.2%
Clinton	123	305	\$49,622	2,865	5,437	\$637,974	6	35	\$1,535	272	654	\$39,716	3,266	6,431	\$728,847	54.9%
Des Moines	157	374	\$63,007	2,681	5,300	\$624,411	15	49	\$4,488	253	621	\$40,307	3,106	6,344	\$732,213	55.7%
Dubuque	186	474	\$77,432	3,559	7,322	\$829,459	16	74	\$5,385	390	932	\$61,468	4,151	8,802	\$973,744	45.8%
Henry	34	77	\$11,590	869	1,847	\$203,214	7	22	\$1,547	83	212	\$10,762	993	2,158	\$227,113	43.0%
Jackson	32	89	\$14,631	702	1,425	\$152,740	6	20	\$1,016	70	169	\$8,679	810	1,703	\$177,066	35.7%
Lee	98	232	\$38,725	2,154	4,274	\$484,582	6	30	\$2,007	233	540	\$37,109	2,491	5,076	\$562,423	51.3%
Louisa	19	45	\$6,691	341	726	\$79,929	1	8	\$646	28	77	\$3,427	389	856	\$90,693	32.0%
Muscatine	91	243	\$39,598	2,118	4,313	\$481,217	9	39	\$2,805	209	515	\$34,198	2,427	5,110	\$557,818	50.7%
Scott	507	1,207	\$202,771	9,820	19,630	\$2,363,557	29	115	\$8,184	1,202	2,475	\$202,610	11,558	23,427	\$2,777,122	64.5%
Area Total	1,255	3,068	\$507,686	25,488	51,082	\$5,946,960	97	398	\$27,965	2,777	6,324	\$443,968	29,617	60,872	\$6,926,579	53.3%

Food Assistance Participation by Case Type and County

County	FA/FIP			FA/Medical Assistance			FA/Hawki			FA Only			Total			Participation Rate*
	Households	Recipients	Allotment	Households	Recipients	Allotment	Households	Recipients	Allotment	Households	Recipients	Allotment	Households	Recipients	Allotment	
Area 4 - Cedar Rapids																
Appanoose	20	59	\$8,911	788	1,424	\$160,218	2	12	\$884	66	155	\$10,107	876	1,650	\$180,120	46.7%
Benton	20	42	\$6,005	722	1,367	\$156,959	6	11	\$1,624	73	178	\$9,605	821	1,598	\$174,193	36.4%
Davis	10	27	\$3,871	245	488	\$49,651	0	0	\$0	26	64	\$4,486	281	579	\$58,008	20.1%
Iowa	8	20	\$3,701	332	672	\$73,962	3	17	\$762	42	115	\$7,248	385	824	\$85,673	28.3%
Jasper	52	123	\$20,061	1,560	2,958	\$344,742	9	30	\$2,608	162	414	\$25,895	1,783	3,525	\$393,306	49.0%
Jefferson	19	52	\$8,386	872	1,537	\$176,352	2	17	\$372	89	172	\$12,459	982	1,778	\$197,569	39.1%
Johnson	166	454	\$71,614	4,013	8,211	\$949,315	24	83	\$5,984	471	1,024	\$78,514	4,674	9,772	\$1,105,427	28.3%
Jones	17	36	\$7,199	623	1,260	\$139,190	2	10	\$822	73	172	\$9,730	715	1,478	\$156,941	39.0%
Keokuk	17	44	\$6,762	440	932	\$104,110	2	19	\$502	38	115	\$4,914	497	1,110	\$116,288	41.1%
Linn	447	1,175	\$185,761	10,079	19,774	\$2,285,095	50	200	\$12,283	1,047	2,307	\$156,513	11,623	23,456	\$2,639,652	58.0%
Mahaska	38	79	\$13,783	1,001	1,868	\$215,311	1	21	\$509	106	240	\$12,794	1,146	2,208	\$242,397	37.5%
Monroe	21	50	\$7,934	270	568	\$63,343	0	0	\$0	44	76	\$4,898	335	694	\$76,175	32.4%
Poweshiek	17	45	\$7,959	482	917	\$99,693	2	10	\$48	60	157	\$9,512	561	1,129	\$117,212	31.3%
Tama	18	51	\$8,123	513	1,126	\$122,698	3	9	\$71	67	161	\$10,686	601	1,347	\$141,578	37.0%
Van Buren	10	17	\$3,110	289	577	\$62,573	3	6	\$866	20	75	\$3,770	322	675	\$70,319	34.7%
Wapello	123	287	\$47,332	2,418	4,499	\$528,065	8	38	\$1,948	198	490	\$31,530	2,747	5,314	\$608,875	47.2%
Washington	23	58	\$10,446	671	1,440	\$151,828	7	25	\$1,722	65	156	\$7,777	766	1,679	\$171,773	38.4%
Area Total	1,026	2,619	\$420,958	25,318	49,618	\$5,683,105	124	508	\$31,005	2,647	6,071	\$400,438	29,115	58,816	\$6,535,506	42.1%

Food Assistance Report Series F-1
Report for January, 2020

Food Assistance Participation by Case Type and County

County	FA/FIP			FA/Medical Assistance			FA/Hawki			FA Only			Total			Participation Rate*
	Households	Recipients	Allotment	Households	Recipients	Allotment	Households	Recipients	Allotment	Households	Recipients	Allotment	Households	Recipients	Allotment	
Area 5 - Des Moines																
Adair	12	25	\$5,019	228	448	\$43,998	1	7	\$620	30	52	\$2,931	271	532	\$52,568	34.9%
Adams	10	21	\$3,619	118	230	\$23,465	1	5	\$282	20	41	\$3,163	149	297	\$30,529	38.3%
Boone	21	47	\$7,008	774	1,490	\$167,124	7	20	\$1,093	77	204	\$9,541	879	1,761	\$184,766	28.5%
Clarke	17	45	\$7,535	393	805	\$89,470	4	15	\$1,005	37	94	\$4,644	451	959	\$102,654	35.5%
Dallas	32	88	\$14,586	1,129	2,443	\$270,390	14	31	\$3,477	112	299	\$20,288	1,287	2,861	\$308,741	30.7%
Decatur	9	21	\$3,195	378	683	\$80,187	2	3	\$757	32	102	\$5,836	421	809	\$89,975	29.4%
Lucas	15	29	\$4,481	366	737	\$77,815	2	8	\$673	42	103	\$5,147	425	877	\$88,116	42.8%
Madison	14	37	\$6,117	360	717	\$75,691	0	0	\$0	47	104	\$7,909	421	858	\$89,717	29.7%
Marion	29	70	\$11,606	939	1,900	\$209,568	5	20	\$1,344	76	225	\$13,270	1,049	2,215	\$235,788	37.1%
Polk	940	2,493	\$403,894	23,701	48,174	\$5,618,297	158	544	\$41,703	2,771	6,215	\$442,883	27,570	57,426	\$6,506,777	57.9%
Ringgold	3	11	\$1,719	183	339	\$39,141	0	0	\$0	17	50	\$2,620	203	400	\$43,480	32.8%
Story	61	143	\$21,104	1,786	3,412	\$397,729	16	44	\$4,096	244	495	\$36,662	2,107	4,094	\$459,591	15.5%
Union	22	63	\$9,674	627	1,172	\$127,996	8	24	\$2,666	71	159	\$9,691	728	1,418	\$150,027	41.5%
Warren	23	63	\$10,456	1,055	2,048	\$234,927	9	27	\$2,787	116	341	\$17,704	1,203	2,479	\$265,874	34.0%
Wayne	8	18	\$4,581	242	477	\$49,248	2	11	\$845	22	65	\$5,483	274	571	\$60,157	33.6%
Area Total	1,216	3,174	\$514,594	32,279	65,075	\$7,505,046	229	759	\$61,348	3,714	8,549	\$587,772	37,438	77,557	\$8,668,760	44.8%
State Total	5,569	14,154	\$2,290,446	126,610	252,548	\$28,685,368	692	2,639	\$186,882	13,820	32,111	\$2,100,975	146,691	301,452	\$33,263,671	43.4%

* Participation Rate is the percentage of individuals at or below 160% FPL who are receiving Food Assistance in a given area (County/SA/State).

It is calculated by dividing the number of Food Assistance Recipients in an area (County/SA/State) by the number of persons in that area at or below 160% of the Federal Poverty Level (as counted in the 2015 American Community Survey).