

Food Assistance Report Series F-1

Report for December, 2019

Food Assistance Program - State Summary

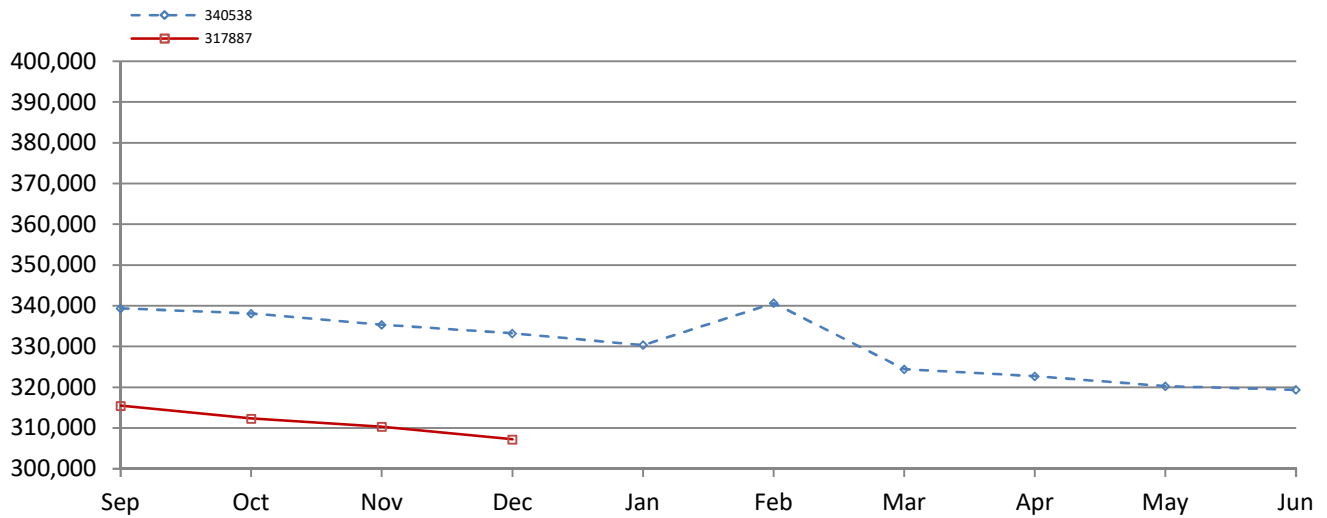
	December, 2019	November, 2019	December, 2018	% of Change Over Last Year
*Households				
FA/FIP	5,772	5,951	6,571	-12.2%
FA/Medical Assistance	127,845	128,866	135,540	-5.7%
FA/Hawki	733	732	749	-2.1%
FA Only	14,726	14,747	17,236	-14.6%
Total Households	149,076	150,296	160,096	-6.9%
*Recipients				
FA/FIP	14,752	15,264	16,857	-12.5%
FA/Medical Assistance	255,332	257,736	273,531	-6.7%
FA/Hawki	2,653	2,654	2,627	1.0%
FA Only	34,494	34,683	40,195	-14.2%
Total Recipients	307,231	310,337	333,210	-7.8%
*Allotments				
FA/FIP	\$2,411,146	\$2,497,296	\$2,740,375	-12.0%
FA/Medical Assistance	\$29,493,180	\$29,795,702	\$31,134,198	-5.3%
FA/Hawki	\$194,889	\$196,676	\$182,272	6.9%
FA Only	\$2,337,047	\$2,346,313	\$2,727,775	-14.3%
Total Allotments	\$34,436,262	\$34,835,987	\$36,784,620	-6.4%
*Average Allotment per Household				
FA/FIP	\$417.73	\$419.64	\$417.04	0.2%
FA/Medical Assistance	\$230.69	\$231.21	\$229.70	0.4%
FA/Hawki	\$265.88	\$268.68	\$243.35	9.3%
FA Only	\$158.70	\$159.10	\$158.26	0.3%
Overall Average per Household	\$231.00	\$231.78	\$229.77	0.5%
*Average Allotment per Recipient				
FA/FIP	\$163.45	\$163.61	\$162.57	0.5%
FA/Medical Assistance	\$115.51	\$115.61	\$113.82	1.5%
FA/Hawki	\$73.46	\$74.11	\$69.38	5.9%
FA Only	\$67.75	\$67.65	\$67.86	-0.2%
Overall Average per Recipient	\$112.09	\$112.25	\$110.39	1.5%

State Fiscal Year to Date

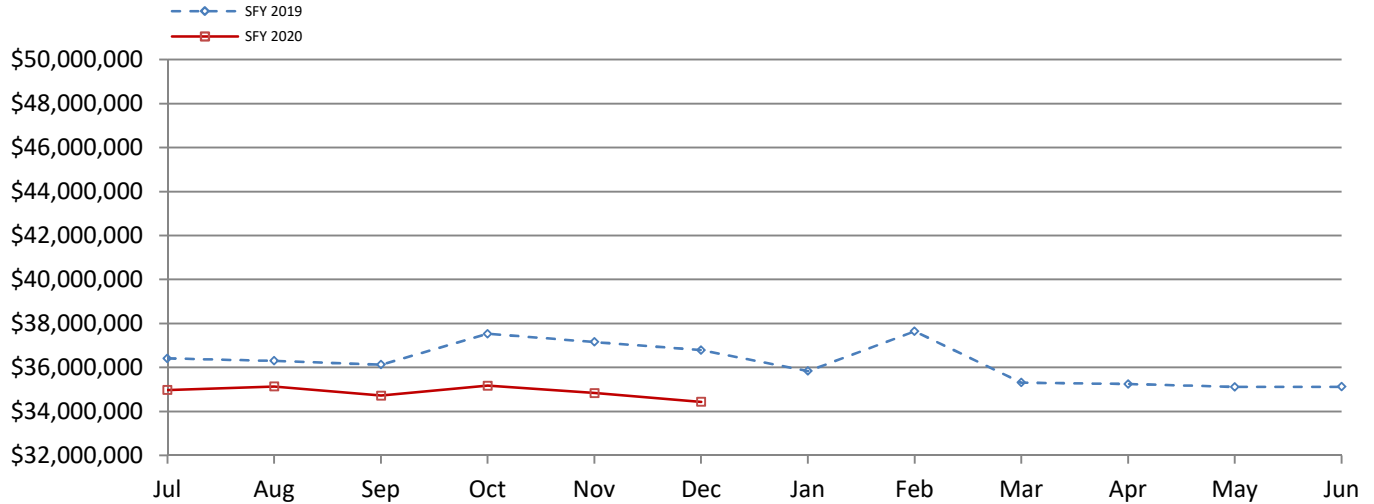
	SFY 2020	SFY 2019	% of Change over Last Year
*Allotment			
FA/FIP	\$14,990,750	\$16,639,705	-9.91%
FA/Medical Assistance	\$178,990,660	\$186,314,826	-3.93%
FA/Hawki	\$1,106,081	\$1,062,185	4.13%
FA Only	\$14,182,913	\$16,287,272	-12.92%
Total Allotment	\$209,270,404	\$220,303,988	-5.01%

Food Assistance Report Series F-1
Report for December, 2019

Total Food Assistance Recipients



Total Food Assistance Benefits



Food Assistance Report Series F-1
Report for December, 2019

Food Assistance Participation by Case Type and County

County	FA/FIP			FA/Medical Assistance			FA/Hawki			FA Only			Total			Participation Rate*
	Households	Recipients	Allotment	Households	Recipients	Allotment	Households	Recipients	Allotment	Households	Recipients	Allotment	Households	Recipients	Allotment	
Area 0 - DHS																
DHS	0	0	\$0	7	17	\$2,378	0	0	\$0	1	1	\$194	8	18	\$2,572	0.0%
Area Total	0	0	\$0	7	17	\$2,378	0	0	\$0	1	1	\$194	8	18	\$2,572	

Food Assistance Participation by Case Type and County

County	FA/FIP			FA/Medical Assistance			FA/Hawki			FA Only			Total			Participation Rate*
	Households	Recipients	Allotment	Households	Recipients	Allotment	Households	Recipients	Allotment	Households	Recipients	Allotment	Households	Recipients	Allotment	
Area 1 - Western																
Audubon	11	29	\$5,124	172	360	\$35,074	1	1	\$279	28	59	\$3,940	212	449	\$44,417	36.3%
Buena Vista	19	53	\$8,138	605	1,403	\$145,645	9	31	\$2,285	67	205	\$10,591	700	1,692	\$166,659	31.9%
Carroll	46	119	\$18,207	636	1,223	\$138,955	4	22	\$754	59	163	\$7,710	745	1,527	\$165,626	38.3%
Cass	17	41	\$6,954	654	1,281	\$137,297	3	12	\$829	66	162	\$8,538	740	1,496	\$153,618	40.0%
Cherokee	6	13	\$2,258	347	702	\$80,541	5	19	\$1,117	44	105	\$5,752	402	839	\$89,668	32.6%
Clay	21	59	\$9,160	632	1,169	\$120,964	10	31	\$3,014	60	162	\$8,092	723	1,421	\$141,230	37.6%
Crawford	57	150	\$24,804	568	1,229	\$137,818	3	13	\$299	54	134	\$5,200	682	1,526	\$168,121	28.0%
Dickinson	11	25	\$3,647	453	800	\$86,147	2	15	\$748	68	141	\$9,130	534	981	\$99,672	38.8%
Emmet	17	49	\$7,235	340	706	\$79,094	3	7	\$861	45	97	\$5,813	405	859	\$93,003	35.0%
Fremont	12	29	\$5,897	310	628	\$70,591	4	11	\$1,724	44	119	\$7,038	370	787	\$85,250	50.1%
Greene	19	53	\$8,570	367	746	\$78,078	1	7	\$128	35	93	\$6,288	422	899	\$93,064	38.3%
Guthrie	11	34	\$5,080	306	633	\$69,607	4	10	\$747	54	130	\$8,293	375	807	\$83,727	32.7%
Harrison	23	47	\$9,391	527	1,030	\$109,373	1	11	\$355	54	109	\$6,557	605	1,197	\$125,676	38.7%
Ida	4	10	\$1,657	216	468	\$49,413	2	12	\$596	22	68	\$3,637	244	558	\$55,303	33.0%
Kossuth	7	21	\$2,886	404	791	\$84,611	3	14	\$1,191	48	114	\$4,923	462	940	\$93,611	30.7%
Lyon	5	10	\$1,613	165	373	\$40,216	1	4	\$509	17	47	\$1,778	188	434	\$44,116	25.6%
Mills	16	35	\$5,922	466	953	\$109,679	3	13	\$245	50	153	\$6,989	535	1,154	\$122,835	39.5%
Monona	13	39	\$5,380	385	813	\$87,093	1	8	\$160	43	112	\$6,905	442	972	\$99,538	37.5%
Montgomery	33	77	\$11,909	622	1,243	\$142,868	0	0	\$0	59	141	\$9,418	714	1,461	\$164,195	45.1%
O'Brien	12	30	\$5,228	347	672	\$75,460	0	0	\$0	47	126	\$8,244	406	828	\$88,932	29.9%
Osceola	5	13	\$2,239	158	334	\$36,815	0	0	\$0	22	47	\$3,166	185	394	\$42,220	31.3%
Page	19	41	\$7,212	719	1,485	\$165,167	3	11	\$683	67	183	\$11,219	808	1,720	\$184,281	40.0%
Palo Alto	10	23	\$3,798	260	526	\$59,211	1	6	\$116	27	67	\$3,585	298	622	\$66,710	28.6%
Plymouth	18	43	\$6,932	472	948	\$103,976	1	12	\$151	53	119	\$7,623	544	1,122	\$118,682	26.0%
Pottawattamie	262	680	\$111,367	5,568	10,535	\$1,223,554	23	81	\$5,812	680	1,439	\$108,340	6,533	12,735	\$1,449,073	62.0%
Sac	7	20	\$4,027	247	521	\$57,260	2	10	\$984	38	98	\$4,046	294	649	\$66,317	33.9%
Shelby	12	27	\$5,075	365	739	\$81,424	0	0	\$0	34	87	\$5,402	411	853	\$91,901	32.0%
Sioux	8	23	\$3,472	428	916	\$98,197	6	16	\$1,639	56	145	\$8,132	498	1,100	\$111,440	18.4%
Taylor	10	29	\$4,752	230	482	\$53,763	1	7	\$74	23	72	\$4,109	264	590	\$62,698	33.2%
Woodbury	305	841	\$132,914	5,393	11,311	\$1,309,062	40	139	\$10,362	583	1,437	\$97,704	6,321	13,728	\$1,550,042	47.6%
Area Total	1,016	2,663	\$430,848	22,362	45,020	\$5,066,953	137	523	\$35,662	2,547	6,134	\$388,162	26,062	54,340	\$5,921,625	41.1%

Food Assistance Report Series F-1
Report for December, 2019

Food Assistance Participation by Case Type and County

County	FA/FIP			FA/Medical Assistance			FA/Hawki			FA Only			Total			Participation Rate*
	Households	Recipients	Allotment	Households	Recipients	Allotment	Households	Recipients	Allotment	Households	Recipients	Allotment	Households	Recipients	Allotment	
Area 2 - Northern																
Allamakee	15	33	\$6,564	388	905	\$98,597	4	9	\$891	42	99	\$5,440	449	1,046	\$111,492	30.8%
Black Hawk	499	1,283	\$206,079	7,035	13,349	\$1,531,966	38	124	\$8,894	835	1,864	\$134,575	8,407	16,620	\$1,881,514	47.2%
Bremer	19	48	\$7,716	435	928	\$96,029	7	27	\$930	54	141	\$5,142	515	1,144	\$109,817	31.5%
Buchanan	27	63	\$10,420	598	1,137	\$127,174	4	19	\$1,572	59	159	\$10,210	688	1,378	\$149,376	36.5%
Butler	18	37	\$5,921	371	792	\$80,924	3	17	\$900	55	135	\$7,850	447	981	\$95,595	37.5%
Calhoun	7	13	\$2,029	292	593	\$59,428	3	9	\$106	28	83	\$3,361	330	698	\$64,924	27.5%
Cerro Gordo	71	175	\$28,631	1,964	3,524	\$404,213	11	49	\$2,756	215	504	\$29,818	2,261	4,252	\$465,418	40.7%
Chickasaw	5	8	\$1,643	249	548	\$56,611	2	8	\$316	53	124	\$7,584	309	688	\$66,154	23.3%
Clayton	12	23	\$3,702	417	803	\$81,381	3	6	\$568	66	136	\$6,669	498	968	\$92,320	23.4%
Delaware	16	42	\$6,301	429	828	\$88,808	2	8	\$227	48	124	\$9,027	495	1,002	\$104,363	24.6%
Fayette	40	105	\$17,198	979	1,971	\$215,368	5	19	\$1,496	99	241	\$14,898	1,123	2,336	\$248,960	46.0%
Floyd	34	97	\$14,050	680	1,404	\$148,227	3	14	\$735	76	170	\$9,076	793	1,685	\$172,088	38.3%
Franklin	18	40	\$6,666	317	650	\$75,519	5	8	\$1,183	24	83	\$3,151	364	781	\$86,519	29.8%
Grundy	13	29	\$4,916	227	492	\$53,771	2	6	\$1,061	24	62	\$3,330	266	589	\$63,078	29.9%
Hamilton	9	21	\$3,105	401	766	\$86,454	3	11	\$889	54	119	\$8,487	467	917	\$98,935	26.0%
Hancock	6	20	\$2,727	238	498	\$56,199	3	8	\$982	23	72	\$2,743	270	598	\$62,651	28.2%
Hardin	18	44	\$8,637	563	1,235	\$129,964	2	8	\$402	73	195	\$12,605	656	1,482	\$151,608	41.6%
Howard	6	17	\$2,415	236	449	\$50,095	2	7	\$618	33	72	\$5,112	277	545	\$58,240	22.7%
Humboldt	7	20	\$2,799	282	604	\$61,411	1	10	\$45	29	78	\$3,414	319	712	\$67,669	27.6%
Marshall	80	200	\$32,277	1,721	3,731	\$406,271	4	22	\$897	189	511	\$31,039	1,994	4,464	\$470,484	46.0%
Mitchell	15	32	\$4,436	224	471	\$46,537	2	9	\$846	33	67	\$4,459	274	579	\$56,278	25.8%
Pocahontas	8	19	\$3,135	228	497	\$52,297	1	3	\$424	27	57	\$2,967	264	576	\$58,823	29.9%
Webster	109	264	\$42,381	2,167	4,142	\$480,829	14	39	\$5,142	179	442	\$27,962	2,469	4,887	\$556,314	51.1%
Winnebago	14	36	\$6,529	291	612	\$66,923	1	2	\$177	50	107	\$9,262	356	757	\$82,891	33.5%
Winneshiek	8	18	\$2,357	371	739	\$78,579	0	0	\$0	37	80	\$4,469	416	837	\$85,405	27.3%
Worth	6	14	\$2,817	199	429	\$51,290	1	5	\$355	25	81	\$4,727	231	529	\$59,189	30.3%
Wright	31	76	\$13,282	470	1,004	\$114,414	3	14	\$665	44	127	\$8,149	548	1,221	\$136,510	40.0%
Area Total	1,111	2,777	\$448,733	21,772	43,101	\$4,799,279	129	461	\$33,077	2,474	5,933	\$375,526	25,486	52,272	\$5,656,615	38.8%

Food Assistance Report Series F-1
Report for December, 2019

Food Assistance Participation by Case Type and County

County	FA/FIP			FA/Medical Assistance			FA/Hawki			FA Only			Total			Participation Rate*
	Households	Recipients	Allotment	Households	Recipients	Allotment	Households	Recipients	Allotment	Households	Recipients	Allotment	Households	Recipients	Allotment	
Area 3 - Eastern																
Cedar	6	19	\$2,832	384	824	\$91,919	3	10	\$905	40	139	\$6,985	433	992	\$102,641	32.1%
Clinton	139	354	\$56,909	2,893	5,525	\$656,743	5	37	\$1,167	296	682	\$44,300	3,333	6,598	\$759,119	56.3%
Des Moines	158	394	\$62,570	2,697	5,319	\$648,070	14	48	\$3,939	267	656	\$43,409	3,136	6,417	\$757,988	56.4%
Dubuque	196	513	\$83,625	3,604	7,420	\$849,464	18	74	\$5,574	413	1,004	\$68,815	4,231	9,011	\$1,007,478	46.9%
Henry	35	78	\$11,560	883	1,861	\$208,050	6	21	\$1,569	84	216	\$11,302	1,008	2,176	\$232,481	43.4%
Jackson	36	97	\$15,237	715	1,441	\$158,715	8	20	\$1,463	71	193	\$9,447	830	1,751	\$184,862	36.7%
Lee	99	234	\$40,600	2,158	4,295	\$494,169	7	28	\$2,501	233	540	\$38,332	2,497	5,097	\$575,602	51.5%
Louisa	22	52	\$8,938	342	721	\$78,939	2	7	\$662	26	79	\$3,995	392	859	\$92,534	32.2%
Muscatine	86	225	\$36,826	2,165	4,420	\$504,875	10	40	\$3,403	208	538	\$34,392	2,469	5,223	\$579,496	51.8%
Scott	516	1,229	\$208,201	9,844	19,700	\$2,413,132	37	115	\$10,309	1,286	2,696	\$224,994	11,683	23,740	\$2,856,636	65.3%
Area Total	1,293	3,195	\$527,298	25,685	51,526	\$6,104,076	110	400	\$31,492	2,924	6,743	\$485,971	30,012	61,864	\$7,148,837	54.2%

Food Assistance Participation by Case Type and County

County	FA/FIP			FA/Medical Assistance			FA/Hawki			FA Only			Total			Participation Rate*
	Households	Recipients	Allotment	Households	Recipients	Allotment	Households	Recipients	Allotment	Households	Recipients	Allotment	Households	Recipients	Allotment	
Area 4 - Cedar Rapids																
Appanoose	23	70	\$10,771	789	1,458	\$165,417	2	12	\$884	70	159	\$10,777	884	1,699	\$187,849	48.1%
Benton	21	47	\$7,574	724	1,381	\$160,506	6	11	\$1,967	79	200	\$9,910	830	1,639	\$179,957	37.3%
Davis	10	26	\$3,595	241	479	\$50,400	0	0	\$0	29	69	\$4,311	280	574	\$58,306	19.9%
Iowa	11	33	\$4,666	336	675	\$75,781	1	8	\$555	47	122	\$8,153	395	838	\$89,155	28.8%
Jasper	56	127	\$21,487	1,603	3,056	\$361,076	8	27	\$2,716	175	447	\$28,674	1,842	3,657	\$413,953	50.9%
Jefferson	22	52	\$8,875	856	1,515	\$173,576	6	17	\$1,009	94	188	\$14,819	978	1,772	\$198,279	39.0%
Johnson	180	487	\$76,749	3,997	8,170	\$960,704	24	72	\$6,298	492	1,108	\$82,990	4,693	9,837	\$1,126,741	28.5%
Jones	17	32	\$6,819	631	1,281	\$142,593	4	20	\$880	73	161	\$10,352	725	1,494	\$160,644	39.4%
Keokuk	18	46	\$7,878	434	898	\$103,233	4	20	\$593	39	127	\$5,900	495	1,091	\$117,604	40.4%
Linn	458	1,207	\$196,951	10,155	19,942	\$2,334,522	46	186	\$12,252	1,128	2,459	\$172,566	11,787	23,794	\$2,716,291	58.9%
Mahaska	34	66	\$12,510	1,000	1,866	\$218,529	2	21	\$703	108	248	\$13,739	1,144	2,201	\$245,481	37.4%
Monroe	20	50	\$8,090	273	564	\$63,508	0	0	\$0	44	79	\$5,278	337	693	\$76,876	32.4%
Poweshiek	22	69	\$11,553	476	914	\$100,094	3	7	\$136	63	157	\$10,224	564	1,147	\$122,007	31.8%
Tama	21	59	\$9,374	524	1,171	\$129,910	3	11	\$618	64	154	\$9,056	612	1,395	\$148,958	38.3%
Van Buren	10	17	\$3,609	286	577	\$65,536	5	8	\$1,495	21	71	\$3,000	322	673	\$73,640	34.6%
Wapello	132	303	\$50,491	2,434	4,568	\$540,453	9	32	\$2,337	213	535	\$34,517	2,788	5,438	\$627,798	48.3%
Washington	24	66	\$11,328	668	1,406	\$153,837	11	32	\$3,506	71	187	\$10,015	774	1,691	\$178,686	38.7%
Area Total	1,079	2,757	\$452,320	25,427	49,921	\$5,799,675	134	484	\$35,949	2,810	6,471	\$434,281	29,450	59,633	\$6,722,225	42.7%

Food Assistance Report Series F-1
Report for December, 2019

Food Assistance Participation by Case Type and County

County	FA/FIP			FA/Medical Assistance			FA/Hawki			FA Only			Total			Participation Rate*
	Households	Recipients	Allotment	Households	Recipients	Allotment	Households	Recipients	Allotment	Households	Recipients	Allotment	Households	Recipients	Allotment	
Area 5 - Des Moines																
Adair	12	25	\$4,739	224	458	\$46,730	1	7	\$620	31	61	\$2,942	268	551	\$55,031	36.2%
Adams	9	20	\$3,602	119	234	\$24,112	1	5	\$75	20	44	\$3,361	149	303	\$31,150	39.1%
Boone	21	50	\$8,171	763	1,472	\$165,976	7	21	\$1,634	92	220	\$12,041	883	1,763	\$187,822	28.5%
Clarke	16	41	\$6,485	416	833	\$95,457	3	15	\$1,120	36	100	\$4,763	471	989	\$107,825	36.6%
Dallas	32	91	\$15,829	1,165	2,510	\$283,550	14	33	\$3,082	121	345	\$24,567	1,332	2,979	\$327,028	31.9%
Decatur	11	26	\$3,991	384	701	\$80,795	2	3	\$757	37	111	\$6,556	434	841	\$92,099	30.5%
Lucas	13	24	\$3,902	384	784	\$84,028	2	8	\$673	42	113	\$5,536	441	929	\$94,139	45.4%
Madison	13	34	\$5,940	359	710	\$77,431	2	10	\$419	51	121	\$9,320	425	875	\$93,110	30.3%
Marion	29	72	\$12,225	941	1,882	\$214,433	5	19	\$1,532	88	252	\$16,907	1,063	2,225	\$245,097	37.3%
Polk	990	2,670	\$432,781	23,916	48,651	\$5,763,164	156	540	\$40,466	2,942	6,646	\$485,419	28,004	58,507	\$6,721,830	59.0%
Ringgold	5	13	\$2,083	187	348	\$40,120	1	5	\$646	16	50	\$2,579	209	416	\$45,428	34.2%
Story	66	145	\$23,586	1,795	3,402	\$409,285	14	31	\$3,026	265	535	\$41,628	2,140	4,113	\$477,525	15.6%
Union	21	59	\$9,797	643	1,215	\$137,689	7	24	\$2,106	78	172	\$11,603	749	1,470	\$161,195	43.0%
Warren	33	81	\$14,305	1,064	2,082	\$243,835	7	24	\$2,044	123	364	\$18,825	1,227	2,551	\$279,009	35.0%
Wayne	8	22	\$4,511	249	497	\$54,214	1	4	\$509	28	79	\$6,866	286	602	\$66,100	35.5%
Area Total	1,279	3,373	\$551,947	32,609	65,779	\$7,720,819	223	749	\$58,709	3,970	9,213	\$652,913	38,081	79,114	\$8,984,388	45.7%
State Total	5,778	14,765	\$2,411,146	127,862	255,364	\$29,493,180	733	2,617	\$194,889	14,726	34,495	\$2,337,047	149,099	307,241	\$34,436,262	44.3%

* Participation Rate is the percentage of individuals at or below 160% FPL who are receiving Food Assistance in a given area (County/SA/State).
It is calculated by dividing the number of Food Assistance Recipients in an area (County/SA/State) by the number of persons in that area at or below 160% of the Federal Poverty Level (as counted in the 2015 American Community Survey).