

Iowa College Student Aid Commission

Student and Faculty Ethnic Diversity Report

March 2014



Iowa College Student Aid Commission Student and Faculty Ethnic Diversity Report March 2014

Executive Summary

The Iowa College Student Aid Commission annual Student and Faculty Ethnic Diversity Report summarizes trends in representation by minority population groups among students, faculty, and state financial aid recipients at Iowa colleges and universities. The report has been published each year since 1992 and is provided to the Governor and General Assembly of Iowa as directed by Iowa Code §261.2 (Duties of commission). The report is based on an annual survey of Iowa college and university officials. The Commission and staff are grateful for the assistance of college and university staff who contributed the information compiled for this report.

Findings of the 2014 report include the following:

- In the fall of 2013, 32,534 minority students were enrolled at Iowa colleges and universities.
- Enrollment of racial and ethnic minority students in Iowa's colleges and universities has expanded steadily since 1992, when the Ethnic Diversity Survey was first conducted. Between fall 1992 and fall 2013, enrollment of racial and ethnic minority students in Iowa's colleges and universities more than tripled.
- In the fall of 2013, racial and ethnic minorities represented 14.0% of total enrollment in Iowa's colleges and universities.
- In the fall of 2013, 11.9% of students enrolled in Iowa colleges and universities were Iowa resident minority students.
- Of Iowa-resident minority students attending college in Iowa during the previous academic year (2011-12), 9.8% were awarded an Iowa Grant, Iowa Tuition Grant, Iowa Vocational-Technical Tuition Grant, or All Iowa Opportunity Scholarship. Of the grants and scholarships awarded through these state programs in 2012-13, 10.5% were awarded to students who are members of minority population groups.

Please note that some apparent trends reported in this report partly reflect changes in agency methods of counting students and faculty by race/ethnicity implemented in the fall of 2010. Methods for collecting the data in this report are described under Report Background. The numbers reported only reflect self-reported race and ethnicity to the institutions, therefore data represented in this report will not match total enrollment data on various other reports.

For this report, minority students and faculty include those from the following population groups: Hispanic or Latino; American Indian or Alaska Native; Asian; Black or African American; Native Hawaiian or other Pacific Islander; two or more races/ethnicities.

Detailed data tables are provided as attached exhibits.

Contents

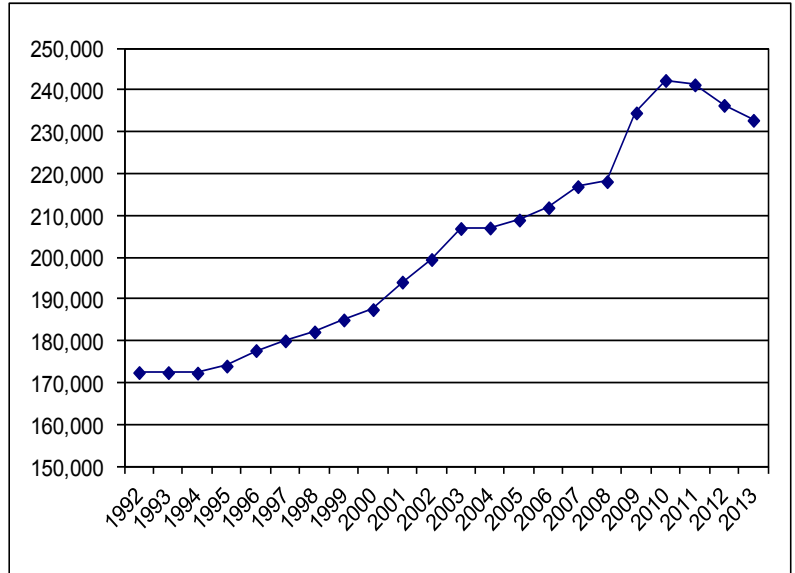
Executive Summary	2
Postsecondary Enrollment 1992 - 2013	3
Minority Participation in State-Appropriated Student Financial Aid Programs	5
Report Background.....	6
References.....	7
Exhibits	Error! Bookmark not defined.

Postsecondary Enrollment 1992 - 2013

In the fall of 2013, a total of 232,790 full- and part-time graduate and undergraduate students were enrolled in Iowa postsecondary institutions, including Regent universities, independent four-year colleges and universities, community colleges, proprietary colleges, and specialized graduate medical schools. Note that this figure represents enrollment at Iowa degree-granting institutions, which annually report student ethnic diversity data to the Iowa College Student Aid Commission.

Total enrollment in Iowa's colleges and universities increased steadily until 2011. In the fall of 1992, the first year of the Ethnic Diversity Report, full-time and part-time enrollment in Iowa was 172,435. Between 1992 and 2013, total enrollment expanded 35%.

Total Enrollment in Iowa Colleges and Universities

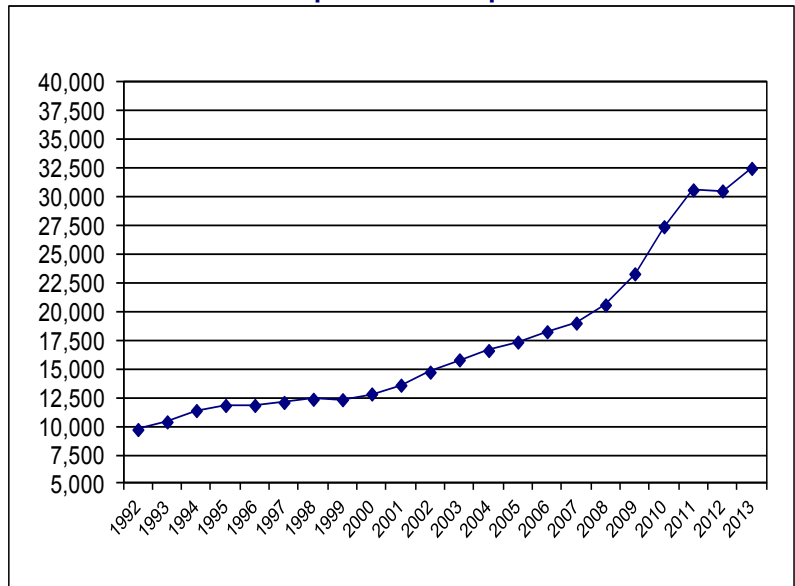


Source: Iowa College Enrollment Report and Iowa College Student Aid Commission Report of Ethnic Diversity. Total enrollments include full- and part-time undergraduate, graduate, and professional students.

Like enrollment overall, the enrollment of racial and ethnic minority students in Iowa's colleges and universities has also increased since 1992. In 1992, Iowa colleges and universities enrolled 9,744 students from racial or ethnic minority groups; in 2013, this figure was 32,534—an increase of 234%.

Between 1992 and 2013, the percentage of Iowans whose race and ethnicity was other than white, non-Hispanic increased from 4.0% to 12.0% (U.S. Census Bureau). In the years between 1992 and 2013, the total population of Iowa increased by 255,785—from 2.81 million to 3.07 million. Over the same period, Iowa's ethnic minority population grew by 234,715 accounting for 91.8% of the state's population expansion during those years.

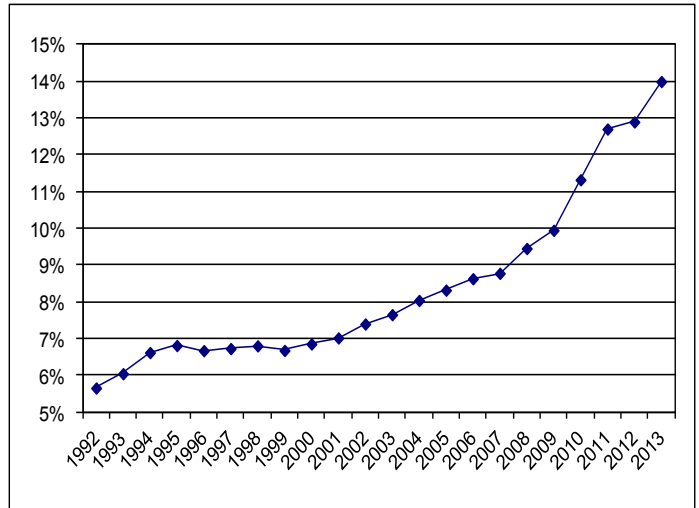
Enrollment by Students from Racial and Ethnic Minority Population Groups



Enrollments include full- and part-time undergraduate, graduate, and professional students.

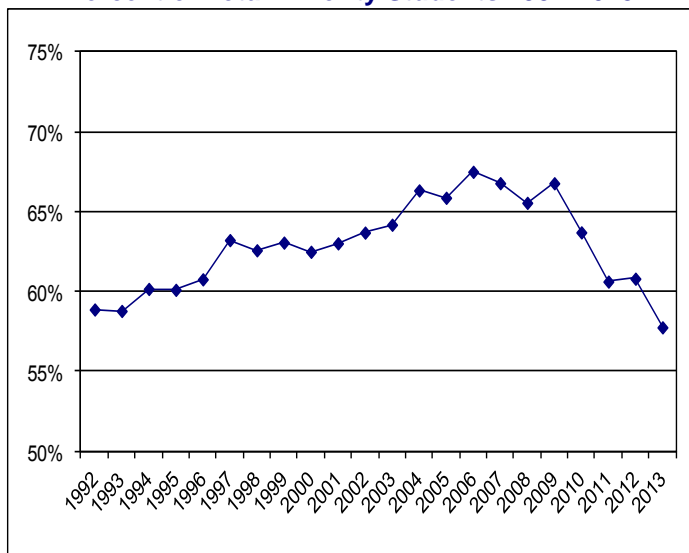
Between 1992 and 2013, total enrollment in Iowa colleges and universities increased by over 60,000 students, from 172,435 to 232,790 and the percentage of total enrollment represented by racial and ethnic minorities in Iowa's colleges and universities expanded from 5.7% to 14.0%. Growth in minority enrollments between 1992 and 2013, then, significantly outpaced overall enrollment growth during these two decades. Between 1992 and 2013, total enrollment grew by 35%, and enrollment of racial and ethnic minority students increased 234%. As a percentage of total enrollments, minority enrollment began its steady expansion in the early 2000s.

Minority Enrollment as a Percentage of Total Enrollment in Iowa Colleges and Universities: Percent of Total Enrollments 1992-2013



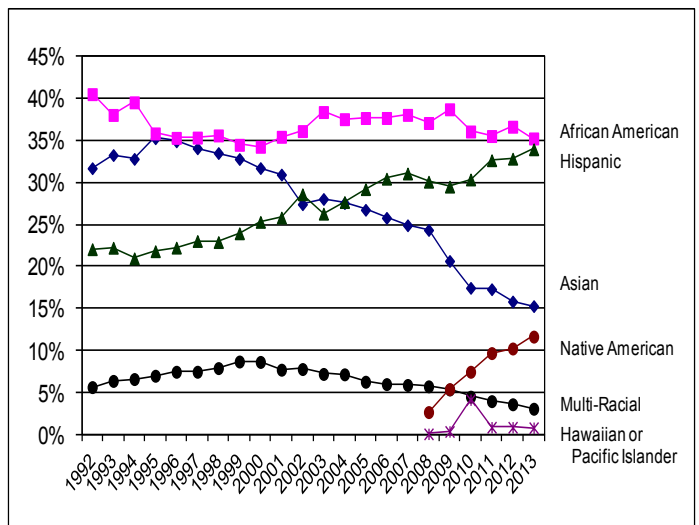
Enrollments include full- and part-time undergraduate, graduate, and professional students.

Iowa-Resident Minority Students at Iowa Colleges and Universities: Percent of Total Minority Students 1992-2013



Enrollments include full- and part-time undergraduate, graduate, and professional students.

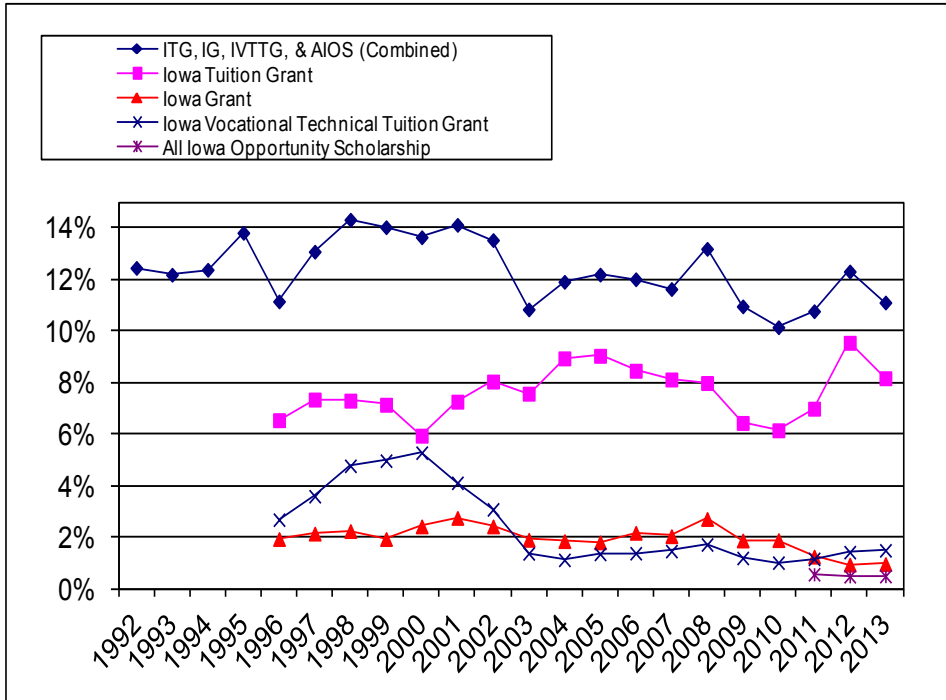
Iowa-Resident Minority Students by Population Group: 1992-2013



Enrollments include full- and part-time undergraduate, graduate, and professional students.

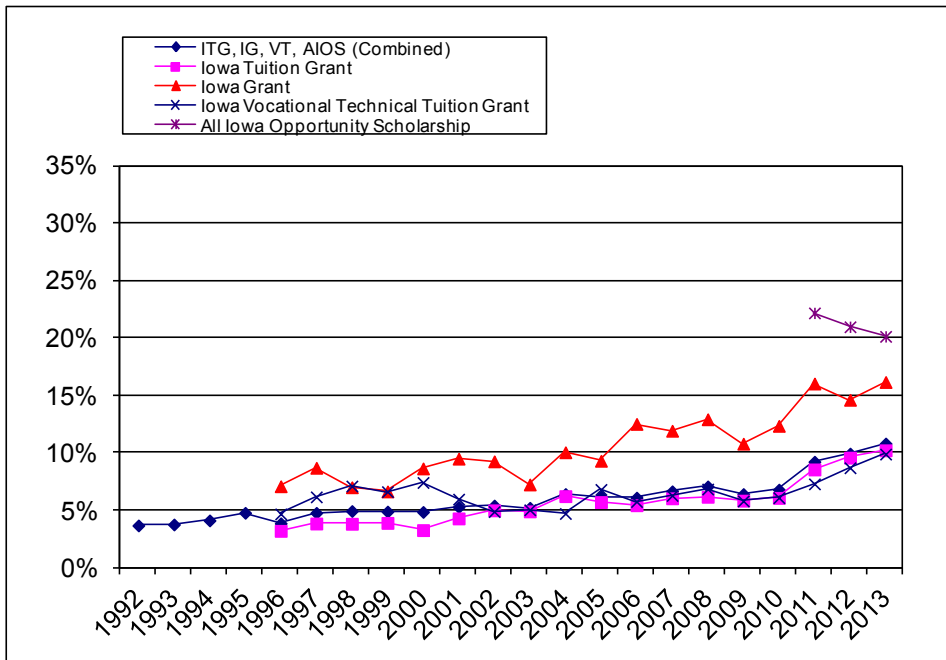
Minority Participation in State-Appropriated Student Financial Aid Programs

Percent of Iowa Minority Students Receiving Grants and Scholarships



For the Student and Faculty Ethnic Diversity Report, Iowa institutions also report the race/ethnicity of recipients of state financial aid for four major state aid programs: Iowa Grants, Iowa Tuition Grants, Iowa Vocational-Technical Tuition Grants, and All Iowa Opportunity Scholarships.

In the 2012-2013 academic year, some 10.5% of Iowa resident minority students attending college in Iowa were awarded one or more of these grants. The chart at left tracks the history, since 1992, of grant program participation by Iowa-resident minority students. Participation by program is reported beginning with the 1995-1996 academic year. Participation in the All Iowa Opportunity Grant program by race/ethnicity is reported for the first time in 2010-11.



The chart at left shows minority participation in these four state aid programs as a percentage of total participation. In 2012-2013 academic year, 10.20% of Iowa Tuition Grants, 9.88% of Iowa Vocational-Technical Tuition Grants, 16.16% of Iowa Grants, and 20.13% of All Iowa Opportunity Scholarships were awarded to minority students.

Report Background

Iowa Code §261.2 directs the Iowa College Student Aid Commission to collect data on racial and ethnic diversity at Iowa colleges and universities and to provide a report to the Governor and General Assembly of Iowa. The Commission collects this information by means of its annual Ethnic Diversity Survey, one of three principal surveys the Commission administers to Iowa postsecondary institutions annually.

Since it was first administered in 1992 until the fall of 2009, the content of the Commission's ethnic diversity survey remained essentially unchanged. During this period, the survey collected information about the representation of students and faculty from various minority population groups for both U.S. citizens and non-resident aliens. With the fall 2010 survey, the Commission's survey form implemented new race and ethnicity categories consistent with U.S. Department of Education guidelines for reporting race and ethnicity. In 2010, for the first time, the survey allowed institutions to report the (unduplicated headcount) number of students and faculty in the following race/ethnicity categories:

1. Non-Resident Alien
2. Race and Ethnicity Unknown
3. White

In previous years the ethnic diversity survey collected the race/ethnicity of non-resident aliens rather than treating "non-resident alien" as a separate and unique race/ethnicity category for reporting purposes. For this reason, apparent trends in minority representation are partly conflated with shifts attributable to this one-time change in methods of counting students and faculty by race/ethnicity.

The system used for reporting race and ethnicity data in the Commission's annual ethnic diversity survey is consistent with the U.S. Department of Education's guidance on reporting such data as it pertains to the Integrated Postsecondary Education Data System (IPEDS) (Federal Register, 2007). According to this guidance, when reporting race and ethnicity data, educational institutions report aggregated racial and ethnic data in the following seven categories:

Race and Ethnicity Categories Used for this Report

1. Non-Resident Alien.
2. Race and Ethnicity Unknown.
3. Hispanic or Latino. A person of Cuban, Mexican, Puerto Rican, South or Central American, or other Spanish culture or origin, regardless of race. The term "Spanish origin" can be used in addition to "Hispanic/Latino or Latino."
4. American Indian or Alaska Native. A person having origins in any of the original peoples of North and South America (including Central America), and who maintains a tribal affiliation or community attachment.
5. Asian. A person having origins in any of the original peoples of the Far East, Southeast Asia, or the Indian subcontinent including, for example, Cambodia, China, India, Japan, Korea, Malaysia, Pakistan, the Philippine Islands, Thailand, and Vietnam.
6. Black or African American. A person having origins in any of the Black racial groups of Africa.
7. Native Hawaiian or Other Pacific Islander. A person having origins in any of the original peoples of Hawaii, Guam, Samoa, or other Pacific Islands.
8. White. A person having origins in any of the original peoples of Europe, the Middle East, or North Africa.
9. Two or more races.

References

Duties of commission, Iowa Code §261.2 (2011).

Federal Register 72:202 (Friday, October 19, 2007)
<http://edocket.access.gpo.gov/2007/pdf/E7-20613.pdf>.

U. S. Census Bureau. (2012). American Community Survey. Washington, DC; Author.

For information about this report, contact:

Joe Dullard
Statistical Research Analyst
Iowa College Student Aid Commission
603 E 12th Street 5th Floor
Des Moines IA 50319-9017

joe.dullard@iowa.gov
Phone: 515.725.3406
www.iowacollegeaid.gov

- Exhibit A - Summary of Student and Faculty Ethnic Diversity at Iowa Colleges and Universities 1992 -2013
- Exhibit B - Undergraduate Enrollment in Iowa Colleges and Universities by Race/Ethnicity
- Exhibit C - Graduate Enrollment in Iowa Colleges and Universities by Race/Ethnicity
- Exhibit D - Undergraduate Enrollment in Iowa Colleges and Universities by Race/Ethnicity - Iowa Residents
- Exhibit E - Graduate Enrollment in Iowa Colleges and Universities by Race/Ethnicity - Iowa Residents
- Exhibit F - Total Enrollment and Enrollment of Minority Population Groups
- Exhibit G - Total Enrollment and Enrollment of Minority Population Groups - Iowa Residents Only
- Exhibit H - State Financial Aid to Minority Students at Iowa Colleges and Universities - Awards in Four Major Programs* in the 2012-2013 Academic Year
- Exhibit I - Faculty at Iowa Colleges and Universities



Exhibit A
IOWA COLLEGE STUDENT AID COMMISSION
Student and Faculty Ethnic Diversity at Iowa Colleges and Universities
1992-2013
Summary

	<u>1992</u>	<u>1993</u>	<u>1994</u>	<u>1995</u>	<u>1996</u>	<u>1997</u>	<u>1998</u>	<u>1999</u>	<u>2000</u>	<u>2001</u>	<u>2002</u>	<u>2003</u>	<u>2004</u>	<u>2005</u>	<u>2006</u>	<u>2007</u>	<u>2008</u>	<u>2009</u>	<u>2010</u>	<u>2011</u>	<u>2012</u>	<u>2013</u>
Enrollment																						
Total Full- and Part-Time, Undergraduate and Graduate	172,435	172,421	172,303	173,987	177,699	180,023	182,149	185,018	187,498	194,081	199,484	206,902	207,027	208,929	211,867	216,921	218,119	234,556	242,325	241,279	236,366	232,790
Enrollment by Students from Minority Population Groups																						
Iowa-Resident Minority* Students	5,737	6,122	6,859	7,120	7,201	7,655	7,751	7,788	8,028	8,580	9,396	10,159	11,038	11,448	12,340	12,714	13,516	15,590	17,484	18,919	18,808	19,951
Iowa-Resident Minority Students Percent of Total Enrollment	3.3%	3.6%	4.0%	4.1%	4.1%	4.3%	4.3%	4.2%	4.3%	4.4%	4.7%	4.9%	5.3%	5.5%	5.8%	5.9%	6.2%	6.6%	7.2%	7.8%	8.0%	11.9%
Total Students from Minority Population Groups	9,744	10,414	11,400	11,845	11,850	12,107	12,384	12,348	12,846	13,614	14,751	15,826	16,638	17,377	18,279	19,034	20,615	23,455	27,442	29,929	30,565	32,534
Total Minority Students Percent of Total Enrollment	5.7%	6.0%	6.6%	6.8%	6.7%	6.7%	6.8%	6.7%	6.9%	7.0%	7.4%	7.6%	8.0%	8.3%	8.6%	8.8%	9.5%	10.0%	11.3%	12.4%	12.9%	14.0%
Iowa Tuition Grants, Vocational-Technical Tuition Grants, Iowa Grants, and All Iowa Opportunity Scholarships**																						
Number Awarded to Students from Minority Population Groups	714	726	849	983	803	1,001	1,110	1,093	1,095	1,212	1,271	1,101	1,315	1,396	1,482	1,474	1,677	1,483	1,582	1,883	2,329	2,087
Percent Awarded to Students from Minority Population Groups	3.7%	3.7%	4.1%	4.8%	3.8%	4.8%	4.9%	4.9%	4.8%	5.3%	5.4%	5.2%	6.4%	6.2%	6.1%	6.6%	7.1%	6.4%	6.8%	9.2%	9.8%	10.5%
Faculty																						
Full- and Part-Time Faculty	10,052	10,698	11,406	12,163	11,799	12,462	12,283	12,475	13,096	12,717	13,048	13,277	13,989	14,573	13,622	13,717	13,865	14,699	13,237	15,337	15,834	16,083
Number of Faculty from Minority Population Groups	696	753	796	844	814	855	870	911	971	988	1,047	1,126	1,195	1,229	1,244	1,253	1,286	1,293	1,152	1,340	1,496	1,511
Percent of Faculty from Minority Population Groups	6.9%	7.0%	7.0%	6.9%	6.9%	6.9%	7.1%	7.3%	7.4%	7.8%	8.0%	8.5%	8.5%	8.4%	9.1%	9.1%	9.3%	8.8%	8.7%	8.7%	9.4%	9.4%

* For this report, minority students and faculty include those from the following population groups: Hispanic or Latino; American Indian or Alaska Native; Asian; Black or African American; Native Hawaiian or Other Pacific Islander; two or more races/ethnicities.

** Participation by race/ethnicity in state grant and scholarship programs is reported for the prior complete academic year; e.g., 2012-13 awards are reported in 2013. The number of awards through the All Iowa Opportunity Scholarship program are reported beginning in 2011.

Source: Iowa College Student Aid Commission Annual Student and Faculty Ethnic Diversity Report



Exhibit B
Iowa College Student Aid Commission
Student and Faculty Ethnic Diversity
Fall 2013
Undergraduate Enrollment in Iowa Colleges and Universities by Race/Ethnicity
Undergraduate (Full-time and Part-time)

		Non-Resident Alien	Race/Ethnicity Unknown	Hispanic or Latino	American Indian or Alaska Native	Asian	Black or African American	Native Hawaiian or Pacific	White	Two or More Races/Ethnicities	Total Under- graduate	
1 Regent Universities	Iowa State University	2,172	1,038	1,181	59	759	693	27	21,197	533	27,659	
	University of Iowa	2,259	922	1,270	40	671	594	19	15,680	519	21,974	
	University of Northern Iowa	391	175	289	19	87	279	5	8,967	168	10,380	
2 Private Not-for-Profit,4-year	Allen College	2	0	2	0	4	7	0	378	4	397	
	AIB College of Business	28	188	59	6	19	50	3	643	23	1,019	
	Briar Cliff University	43	1	92	10	17	64	1	798	16	1,042	
	Buena Vista University	52	145	115	11	23	39	3	1,885	20	2,293	
	Central College	20	52	41	3	11	25	3	1,214	17	1,386	
	Clarke University	15	0	34	2	5	30	1	924	0	1,011	
	Coe College	62	64	74	3	33	55	0	1,083	46	1,420	
	Cornell College	64	47	144	8	35	60	3	728	33	1,122	
	Divine Word College	70	0	8	0	27	2	0	9	1	117	
	Dordt College	120	47	20	2	13	27	1	1,133	8	1,371	
	Drake University	235	46	112	6	155	112	2	2,671	44	3,383	
	University of Dubuque	11	129	121	16	22	211	3	1,132	50	1,695	
	Emmaus Bible College	1	13	20	2	3	4	2	140	2	187	
	Faith Baptist Bible College	0	0	3	4	2	4	1	214	1	229	
	Graceland University	68	103	153	8	16	143	19	1,068	57	1,635	
	Grand View University	35	158	58	10	67	158	3	1,538	69	2,096	
	Grinnell College	210	89	140	3	126	98	0	984	71	1,721	
	Iowa Wesleyan College	36	82	32	4	4	36	2	383	9	588	
	Loras College	38	57	90	3	12	34	1	1,259	23	1,517	
	Luther College	142	21	77	2	40	37	0	2,106	41	2,466	
	Maharishi University of Management	38	10	42	2	10	33	0	167	17	319	
	Mercy College of Health Sciences	0	12	20	5	24	31	1	732	1	826	
	Morningside College	20	68	68	6	10	16	3	1,084	30	1,305	
	Mount Mercy College	51	70	26	7	25	52	2	1,232	11	1,476	
	Northwestern College	33	30	69	4	11	26	0	1,041	19	1,233	
	Des Moines University	0	0	0	0	0	0	0	0	0	0	
	Palmer College of Chiropractic	0	1	4	1	1	3	0	28	1	39	
	St Ambrose University	56	100	163	4	25	106	2	2,236	51	2,743	
	Simpson College	19	66	34	14	16	35	0	1,497	31	1,712	
	Upper Iowa University	1,096	341	181	24	57	786	3	3,068	29	5,585	
Wartburg College	161	18	39	2	14	105	1	1,339	35	1,714		
William Penn University	51	62	125	6	23	234	5	1,210	24	1,740		
3 Private for-Profit,4-year	Kaplan University - Mason City	0	12	17	0	0	12	0	170	0	211	
	Kaplan University - Cedar Rapids	0	8	16	2	7	55	0	409	0	497	
	Hamilton Technical College	0	5	17	0	2	8	0	139	4	175	
	Ashford University	81	18	86	1	3	135	2	534	9	869	
	Waldorf College	1	15	73	7	23	160	2	813	9	1,103	
	Kaplan University - Davenport	0	20	37	2	3	86	1	399	0	548	
	Kaplan University - Cedar Falls	0	0	9	5	1	38	0	340	0	393	
	Kaplan University - Des Moines	0	46	48	7	9	61	0	621	0	792	
	ITT Technical Institute—Clive	0	44	10	0	3	21	1	122	9	210	
	ITT Technical Institute – Cedar Rapids	0	4	4	0	0	2	0	27	0	37	
	4 Community Colleges	Des Moines Area Community	155	889	1,108	69	604	1,363	16	15,503	460	20,167
		Iowa Valley -- Ellsworth Community	12	50	52	3	2	145	3	46	0	1,037
Eastern Iowa Community College		49	486	742	47	164	615	14	6,379	198	8,694	
Hawkeye Community College		14	0	177	17	85	455	3	4,971	81	5,803	
Indian Hills Community College		37	463	156	20	41	168	4	3,669	46	4,604	
Iowa Central Community College		52	427	369	27	71	508	6	4,182	55	5,697	
Iowa Lakes Community College		0	58	109	15	47	115	7	2,286	12	2,649	
Iowa Western Community College		102	136	450	119	92	636	14	5,424	18	6,991	
Kirkwood Community College		306	1,674	551	70	249	1,149	15	10,992	317	15,323	
Iowa Valley -- Marshalltown		62	246	93	30	31	76	0	64	0	2,117	
North Iowa Area Community College		34	49	148	10	34	108	0	2,792	31	3,206	
Northeast Iowa Community College		5	139	73	12	24	130	6	4,792	20	5,201	
Northwest Iowa Community College		0	53	68	13	18	4	0	1,451	21	1,628	
Southeastern Community College		33	80	129	27	33	117	5	2,711	30	3,225	
Southwestern Community College		8	5	42	5	11	30	1	1,438	33	1,573	
Western Iowa Tech Community College		18	1,114	730	106	106	173	13	3,978	93	6,331	
5 Private Not-for-Profit,2-year	St Lukes College	1	0	12	1	5	3	1	159	2	184	
6 Private for-Profit, 2-year	Capri College	0	0	1	0	1	2	0	73	0	77	
	Capri College	0	1	0	0	1	4	0	113	5	124	
	Iowa School of Beauty	0	0	5	0	0	0	0	25	0	30	
	Faust Institution of Cosmetology	0	0	1	0	0	0	0	12	1	14	
	Iowa School of Beauty	0	0	12	2	5	30	0	130	2	181	
	La' James International College	0	0	2	1	0	9	0	64	2	78	
	La' James International College	0	0	14	0	2	10	0	110	0	136	
	LaJames College of Hairstyling	0	0	7	0	0	1	0	69	0	77	
	La' James International College	0	0	5	0	1	4	0	51	1	62	
	Iowa School of Beauty	0	0	2	0	0	0	0	71	0	73	
	La' James International College	0	0	2	0	0	5	0	31	0	38	
	La' James International College	0	0	4	0	1	4	0	34	0	43	
	Capri College	0	0	14	0	1	8	0	98	0	121	
	Iowa School of Beauty	0	0	7	0	3	0	0	54	0	64	
	EQ School of Hair Design	0	0	0	0	0	2	0	17	0	19	
	Vatterott College	0	17	17	1	3	23	0	99	1	161	
	Faust Institution of Cosmetology	0	0	5	0	2	0	0	11	1	19	
	Totals	8,569	10,214	10,330	915	4,055	10,664	230	155,241	3,525	205,982	



Exhibit C
Iowa College Student Aid Commission
Student and Faculty Ethnic Diversity
Fall 2013
Graduate Enrollment in Iowa Colleges and Universities by Race/Ethnicity

		Non-Resident Alien	Race/Ethnicity Unknown	Hispanic or Latino	American Indian or	Asian	Black or African American	Native Hawaiian or Pacific	White	Two or More Races/Ethnicities	Total Graduate
1 Regent Universities	Iowa State University	1,625	247	153	9	117	125	2	2,987	32	5,297
	University of Iowa	1,488	944	339	19	385	239	7	5,561	109	9,091
	University of Northern Iowa	129	80	33	5	20	62	2	1,437	11	1,779
2 Private Not-for-Profit,4-year	Allen College	0	0	1	0	2	1	0	178	1	183
	AIB College of Business	0	0	0	0	0	0	0	0	0	0
	Briar Cliff University	0	0	2	0	1	4	0	125	0	132
	Buena Vista University	0	31	2	0	2	0	0	71	0	106
	Central College	0	0	0	0	0	0	0	0	0	0
	Clarke University	0	0	2	1	3	3	0	205	0	214
	Coe College	0	0	0	0	0	0	0	0	0	0
	Cornell College	0	0	0	0	0	0	0	0	0	0
	Divine Word College	0	0	0	0	0	0	0	0	0	0
	Dordt College	5	22	1	0	0	0	0	26	0	54
	Drake University	30	26	25	3	66	45	0	1,527	16	1,756
	University of Dubuque	36	19	2	0	2	8	0	100	0	167
	Emmaus Bible College	0	0	0	0	0	0	0	0	0	0
	Faith Baptist Bible College	0	0	0	1	3	2	0	31	1	38
	Graceland University	4	68	22	11	16	39	2	558	11	731
	Grand View University	0	1	0	0	1	1	0	30	0	33
	Grinnell College	0	0	0	0	0	0	0	0	0	0
	Iowa Wesleyan College	0	0	0	0	0	0	0	0	0	0
	Loras College	0	3	2	0	0	1	0	47	0	53
	Luther College	0	0	0	0	0	0	0	0	0	0
	Maharishi University of Management	639	7	11	0	9	68	0	72	11	817
	Mercy College of Health Sciences	0	0	0	0	0	0	0	0	0	0
	Morningside College	1	226	14	0	2	4	0	990	0	1,237
	Mount Mercy College	3	4	5	4	9	14	0	242	4	285
	Northwestern College	0	0	0	0	0	0	0	0	0	0
	Des Moines University	3	32	31	1	179	52	2	1,421	42	1,763
	Palmer College of Chiropractic	1	7	14	3	68	13	3	877	13	999
	St Ambrose University	20	79	36	3	13	20	0	689	4	864
	Simpson College	0	11	0	0	0	0	0	25	1	37
	Upper Iowa University	8	9	19	7	12	64	0	549	4	672
	Wartburg College	0	0	0	0	0	0	0	0	0	0
	William Penn University	0	1	8	3	0	14	2	179	1	208
3 Private for-Profit,4-year	Kaplan University - Mason City	0	1	1	0	0	1	0	20	0	23
	Kaplan University - Cedar Rapids	0	1	1	0	0	7	0	21	0	30
	Hamilton Technical College	0	0	0	0	0	0	0	0	0	0
	Ashford University	0	0	0	0	0	0	0	0	0	0
	Waldorf College	0	0	0	0	0	0	0	0	0	0
	Kaplan University - Davenport	1	4	2	1	0	11	0	60	1	80
	Kaplan University - Cedar Falls	1	0	2	0	1	6	0	53	0	63
	Kaplan University - Des Moines	0	5	2	0	5	12	0	72	0	96
	ITT Technical Institute-Clive	0	0	0	0	0	0	0	0	0	0
	ITT Technical Institute - Cedar Rapids	0	0	0	0	0	0	0	0	0	0
4 Community Colleges	Des Moines Area Community College	0	0	0	0	0	0	0	0	0	0
	Iowa Valley -- Ellsworth Community College	0	0	0	0	0	0	0	0	0	0
	Eastern Iowa Community College	0	0	0	0	0	0	0	0	0	0
	Hawkeye Community College	0	0	0	0	0	0	0	0	0	0
	Indian Hills Community College	0	0	0	0	0	0	0	0	0	0
	Iowa Central Community College	0	0	0	0	0	0	0	0	0	0
	Iowa Lakes Community College	0	0	0	0	0	0	0	0	0	0
	Iowa Western Community College	0	0	0	0	0	0	0	0	0	0
	Kirkwood Community College	0	0	0	0	0	0	0	0	0	0
	Iowa Valley -- Marshalltown Community College	0	0	0	0	0	0	0	0	0	0
	North Iowa Area Community College	0	0	0	0	0	0	0	0	0	0
	Northeast Iowa Community College	0	0	0	0	0	0	0	0	0	0
	Northwest Iowa Community College	0	0	0	0	0	0	0	0	0	0
	Southeastern Community College	0	0	0	0	0	0	0	0	0	0
	Southwestern Community College	0	0	0	0	0	0	0	0	0	0
	Western Iowa Tech Community College	0	0	0	0	0	0	0	0	0	0
5 Private Not-for-Profit,2-year	St Lukes College	0	0	0	0	0	0	0	0	0	0
6 Private for-Profit, 2-year	Capri College	0	0	0	0	0	0	0	0	0	0
	Capri College	0	0	0	0	0	0	0	0	0	0
	Iowa School of Beauty	0	0	0	0	0	0	0	0	0	0
	Faust Institution of Cosmetology	0	0	0	0	0	0	0	0	0	0
	Iowa School of Beauty	0	0	0	0	0	0	0	0	0	0
	La' James International College	0	0	0	0	0	0	0	0	0	0
	La' James International College	0	0	0	0	0	0	0	0	0	0
	LaJames College of Hairstyling	0	0	0	0	0	0	0	0	0	0
	La' James International College	0	0	0	0	0	0	0	0	0	0
	Iowa School of Beauty	0	0	0	0	0	0	0	0	0	0
	La' James International College	0	0	0	0	0	0	0	0	0	0
	La' James International College	0	0	0	0	0	0	0	0	0	0
	Capri College	0	0	0	0	0	0	0	0	0	0
	Iowa School of Beauty	0	0	0	0	0	0	0	0	0	0
	EQ School of Hair Design	0	0	0	0	0	0	0	0	0	0
	Vatterott College	0	0	0	0	0	0	0	0	0	0
	Faust Institution of Cosmetology	0	0	0	0	0	0	0	0	0	0
	Totals	3,994	1,828	730	71	916	816	20	18,153	262	26,808



Exhibit D
Iowa College Student Aid Commission
Student and Faculty Ethnic Diversity
Fall 2013
Undergraduate Enrollment in Iowa Colleges and Universities by Race/Ethnicity
Undergraduate (Full-time and Part-time) Iowa Residents Only

		Non-Resident Alien	Race/Ethnicity Unknown	Hispanic or Latino	American Indian or Alaska Native	Asian	Black or African American	Native Hawaiian or Pacific Islander	White	Two or More Races/Ethnicities	Total Undergraduate	
1 Regent Universities	Iowa State University	0	761	664	44	542	328	13	15,315	342	18,009	
	University of Iowa	0	581	595	25	471	284	9	9,749	298	12,012	
	University of Northern Iowa	0	158	243	17	77	206	5	8,554	151	9,411	
2 Private Not-for-Profit,4-year	Allen College	0	0	2	0	3	6	0	358	4	375	
	AIB College of Business	6	172	41	5	18	32	1	574	19	868	
	Briar Cliff University	0	1	42	8	10	26	0	523	5	615	
	Buena Vista University	0	135	100	11	18	22	2	1,694	18	2,000	
	Central College	0	33	21	2	10	8	1	985	11	1,071	
	Clarke University	0	0	6	1	4	5	1	567	0	584	
	Coe College	0	45	9	1	6	4	0	660	10	735	
	Cornell College	0	5	3	0	5	4	0	175	3	195	
	Divine Word College	0	0	0	0	0	0	0	0	0	0	
	Dordt College	7	17	4	0	0	5	0	504	1	538	
	Drake University	0	30	31	0	58	37	1	940	16	1,113	
	University of Dubuque	1	55	25	7	3	35	0	591	19	736	
	Emmaus Bible College	0	4	3	0	2	1	1	68	0	79	
	Faith Baptist Bible College	0	0	0	1	1	2	0	99	0	103	
	Graceland University	2	23	14	1	3	9	1	371	12	436	
	Grand View University	0	145	43	10	63	91	1	1,401	44	1,798	
	Grinnell College	0	32	6	0	12	3	0	160	7	220	
	Iowa Wesleyan College	1	51	16	2	2	9	0	292	5	378	
	Loras College	1	19	11	3	3	4	0	502	11	554	
	Luther College	0	11	20	1	6	9	0	686	10	743	
	Maharishi University of Management	0	3	3	1	0	2	0	29	4	42	
	Mercy College of Health Sciences	0	11	20	5	22	27	1	705	1	792	
	Morningside College	0	47	31	2	8	3	3	720	21	835	
	Mount Mercy College	7	63	23	7	24	37	1	1,191	11	1,364	
	Northwestern College	0	7	15	2	3	2	0	593	5	627	
	Des Moines University	0	0	0	0	0	0	0	0	0	0	
	Palmer College of Chiropractic	0	0	1	0	0	0	0	8	1	10	
St Ambrose University	0	56	57	3	13	32	2	977	20	1,160		
Simpson College	2	63	19	12	14	17	0	1,323	22	1,472		
Upper Iowa University	0	93	42	10	13	98	0	1,644	16	1,916		
Wartburg College	0	12	18	2	11	27	0	1,052	26	1,148		
William Penn University	0	38	69	4	12	58	2	1,029	13	1,225		
3 Private for-Profit,4-year	Kaplan University - Mason City	0	9	9	0	0	11	0	147	0	176	
	Kaplan University - Cedar Rapids	0	7	15	2	7	50	0	397	0	478	
	Hamilton Technical College	0	3	10	0	1	7	0	83	2	106	
	Ashford University	74	9	20	1	3	21	0	249	3	380	
	Waldorf College	0	0	1	0	7	5	0	235	3	251	
	Kaplan University - Davenport	0	12	21	2	2	62	0	254	0	353	
	Kaplan University - Cedar Falls	0	0	7	5	1	35	0	328	0	376	
	Kaplan University - Des Moines	0	45	45	7	9	59	0	598	0	763	
	ITT Technical Institute-Clive	0	44	10	0	3	21	1	120	9	208	
	ITT Technical Institute -- Cedar Rapids	0	4	4	0	0	2	0	27	0	37	
	4 Community Colleges	Des Moines Area Community College	0	881	1,093	69	596	1,310	16	15,384	449	19,798
Iowa Valley -- Ellsworth Community College		0	0	27	0	0	21	0	0	0	797	
Eastern Iowa Community College		0	447	629	42	131	451	34	5,760	176	7,670	
Hawkeye Community College		0	0	171	17	63	439	3	4,916	78	5,687	
Indian Hills Community College		0	448	132	20	33	117	3	3,433	41	4,227	
Iowa Central Community College		0	385	336	23	68	268	2	4,080	48	5,210	
Iowa Lakes Community College		0	39	70	7	37	28	5	2,053	12	2,251	
Iowa Western Community College		14	88	274	79	61	133	8	4,368	11	5,036	
Kirkwood Community College		34	1,621	492	65	232	926	13	10,479	292	14,154	
Iowa Valley -- Marshalltown Community College		0	0	0	0	0	0	0	635	0	2,017	
North Iowa Area Community College		0	41	120	9	31	49	0	2,686	29	2,965	
Northeast Iowa Community College		0	112	60	12	21	121	6	4,367	19	4,718	
Northwest Iowa Community College		0	48	65	10	18	3	0	1,362	19	1,525	
Southeastern Community College		0	69	111	22	31	93	4	2,320	81	2,731	
Southwestern Community College		0	5	33	5	9	11	0	1,380	28	1,471	
Western Iowa Tech Community College		3	1,055	597	71	90	149	10	3,482	77	5,534	
St Lukes College		1	0	4	0	3	1	1	105	1	116	
5 Private Not-for-Profit,2-year		Capri College	0	0	0	0	1	1	0	48	0	50
		Capri College	0	1	0	0	1	4	0	113	5	124
	Iowa School of Beauty	0	0	5	0	0	0	0	25	0	30	
	Faust Institution of Cosmetology	0	0	1	0	0	0	0	12	1	14	
	Iowa School of Beauty	0	0	12	2	5	30	0	130	2	181	
	La' James International College	0	0	2	1	0	9	0	64	2	78	
	La' James International College	0	0	7	0	1	5	0	55	0	68	
	LaJames College of Hairstyling	0	0	6	0	0	1	0	59	0	66	
	La' James International College	0	0	5	0	1	4	0	49	1	60	
	Iowa School of Beauty	0	0	2	0	0	0	0	71	0	73	
	La' James International College	0	0	2	0	0	5	0	21	0	28	
	La' James International College	0	0	4	0	1	4	0	33	0	42	
	Capri College	0	0	7	0	1	5	0	55	0	68	
	Iowa School of Beauty	0	0	7	0	3	0	0	54	0	64	
	EQ School of Hair Design	0	0	0	0	0	0	0	16	0	16	
	Vatterott College	0	17	17	1	3	23	0	99	0	160	
	Faust Institution of Cosmetology	0	0	5	0	2	0	0	11	1	19	
	Totals	153	8,061	\$6,635	659	2,913	5,917	151	124,202	2,516	153,340	



Exhibit E
 Iowa College Student Aid Commission
 Student and Faculty Ethnic Diversity
 Fall 2013
 Graduate Enrollment in Iowa Colleges and Universities by Race/Ethnicity
 Graduate (Full-time and Part-time) Iowa Residents Only

		Non-Resident Alien	Race/Ethnicity Unknown	Hispanic or Latino	American Indian or Alaska Native	Asian	Black or African American	Native Hawaiian or Pacific Islander	White	Two or More Races/Ethnicities	Total Graduate	
1 Regent Universities	Iowa State University	0	79	66	3	61	34	2	1,588	13	1,846	
	University of Iowa	0	677	133	9	225	83	2	3,730	45	4,904	
	University of Northern Iowa	0	55	16	3	16	46	1	1,285	9	1,431	
2 Private Not-for-Profit,4-year	Allen College	0	0	1	0	2	1	0	170	1	175	
	AIB College of Business	0	0	0	0	0	0	0	0	0	0	
	Briar Cliff University	0	0	2	0	0	1	0	93	0	96	
	Buena Vista University	0	29	2	0	1	0	0	68	0	100	
	Central College	0	0	0	0	0	0	0	0	0	0	
	Clarke University	0	0	2	1	2	3	0	148	0	156	
	Coe College	0	0	0	0	0	0	0	0	0	0	
	Cornell College	0	0	0	0	0	0	0	0	0	0	
	Divine Word College	0	0	0	0	0	0	0	0	0	0	
	Dordt College	1	8	0	0	0	0	0	12	0	21	
	Drake University	0	24	33	0	18	34	0	1,172	8	1,291	
	University of Dubuque	0	14	0	0	2	6	0	78	0	100	
	Emmaus Bible College	0	0	0	0	0	0	0	0	0	0	
	Faith Baptist Bible College	0	0	0	1	0	1	0	12	1	15	
	Graceland University	0	19	1	1	1	0	1	127	0	150	
	Grand View University	0	0	0	0	1	1	0	29	0	31	
	Grinnell College	0	0	0	0	0	0	0	0	0	0	
	Iowa Wesleyan College	0	0	0	0	0	0	0	0	0	0	
	Loras College	0	2	2	0	0	1	0	38	0	43	
	Luther College	0	0	0	0	0	0	0	0	0	0	
	Maharishi University of Management	0	3	5	0	0	2	0	41	5	56	
	Mercy College of Health Sciences	0	0	0	0	0	0	0	0	0	0	
	Morningside College	1	213	13	0	2	4	0	946	0	1,179	
	Mount Mercy College	2	4	5	3	10	13	0	238	4	279	
	Northwestern College	0	0	0	0	0	0	0	0	0	0	
	Des Moines University	0	19	6	1	24	6	0	489	5	550	
	Palmer College of Chiropractic	1	0	4	2	8	1	0	206	2	224	
St Ambrose University	0	46	21	2	9	16	0	454	2	550		
Simpson College	0	11	0	0	0	0	0	25	1	37		
Upper Iowa University	1	5	3	1	2	10	0	201	1	224		
Wartburg College	0	0	0	0	0	0	0	0	0	0		
William Penn University	0	1	8	2	0	14	0	169	1	195		
3 Private for-Profit,4-year	Kaplan University - Mason City	0	1	1	0	0	1	0	17	0	20	
	Kaplan University - Cedar Rapids	0	1	1	0	0	6	0	20	0	28	
	Hamilton Technical College	0	0	0	0	0	0	0	0	0	0	
	Ashford University	0	0	0	0	0	0	0	0	0	0	
	Waldorf College	0	0	0	0	0	0	0	0	0	0	
	Kaplan University - Davenport	1	2	0	0	0	6	0	41	1	51	
	Kaplan University - Cedar Falls	1	0	2	0	1	6	0	51	0	61	
	Kaplan University - Des Moines	0	4	2	0	5	11	0	69	0	91	
	ITT Technical Institute—Clive	0	0	0	0	0	0	0	0	0	0	
	ITT Technical Institute – Cedar Rapids	0	0	0	0	0	0	0	0	0	0	
4 Community Colleges	Des Moines Area Community College	0	0	0	0	0	0	0	0	0	0	
	Iowa Valley -- Ellsworth Community College	0	0	0	0	0	0	0	0	0	0	
	Eastern Iowa Community College	0	0	0	0	0	0	0	0	0	0	
	Hawkeye Community College	0	0	0	0	0	0	0	0	0	0	
	Indian Hills Community College	0	0	0	0	0	0	0	0	0	0	
	Iowa Central Community College	0	0	0	0	0	0	0	0	0	0	
	Iowa Lakes Community College	0	0	0	0	0	0	0	0	0	0	
	Iowa Western Community College	0	0	0	0	0	0	0	0	0	0	
	Kirkwood Community College	0	0	0	0	0	0	0	0	0	0	
	Iowa Valley -- Marshalltown Community College	0	0	0	0	0	0	0	0	0	0	
	North Iowa Area Community College	0	0	0	0	0	0	0	0	0	0	
	Northeast Iowa Community College	0	0	0	0	0	0	0	0	0	0	
	Northwest Iowa Community College	0	0	0	0	0	0	0	0	0	0	
	Southeastern Community College	0	0	0	0	0	0	0	0	0	0	
	Southwestern Community College	0	0	0	0	0	0	0	0	0	0	
	Western Iowa Tech Community College	0	0	0	0	0	0	0	0	0	0	
	5 Private Not-for-Profit,2-year	St Lukes College	0	0	0	0	0	0	0	0	0	0
	6 Private for-Profit, 2-year	Capri College	0	0	0	0	0	0	0	0	0	0
		Capri College	0	0	0	0	0	0	0	0	0	0
		Iowa School of Beauty	0	0	0	0	0	0	0	0	0	0
Faust Institution of Cosmetology		0	0	0	0	0	0	0	0	0	0	
Iowa School of Beauty		0	0	0	0	0	0	0	0	0	0	
La' James International College		0	0	0	0	0	0	0	0	0	0	
La' James International College		0	0	0	0	0	0	0	0	0	0	
LaJames College of Hairstyling		0	0	0	0	0	0	0	0	0	0	
La' James International College		0	0	0	0	0	0	0	0	0	0	
Iowa School of Beauty		0	0	0	0	0	0	0	0	0	0	
La' James International College		0	0	0	0	0	0	0	0	0	0	
La' James International College		0	0	0	0	0	0	0	0	0	0	
Capri College		0	0	0	0	0	0	0	0	0	0	
Iowa School of Beauty		0	0	0	0	0	0	0	0	0	0	
EQ School of Hair Design		0	0	0	0	0	0	0	0	0	0	
Vatterott College		0	0	0	0	0	0	0	0	0	0	
Faust Institution of Cosmetology		0	0	0	0	0	0	0	0	0	0	
Totals		8	1,217	329	29	390	307	6	11,517	99	13,904	



Exhibit F
Iowa College Student Aid Commission
Student and Faculty Ethnic Diversity
Fall 2013
Total Enrollment and Enrollment of Minority Population Groups
Includes Full - and Part-Time Enrollments

		Total Enrollment	Enrollment Under Grad Students	Enrollment Grad Students	Total Students Racial/Ethnic Minority Groups	Undergraduate Students Racial/Ethnic Minority Groups	Graduate Students Racial/Ethnic Minority Groups	
1 Regent Universities	Iowa State University	32,956	27,659	5,297	3,690	3,252	438	
	University of Iowa	31,065	21,974	9,091	4,211	3,113	1,098	
	University of Northern Iowa	12,159	10,380	1,779	980	847	133	
2 Private Not-for-Profit,4-year	Allen College	580	397	183	22	17	5	
	AIB College of Business	1,019	1,019	0	160	160	0	
	Briar Cliff University	1,174	1,042	132	207	200	7	
	Buena Vista University	2,399	2,293	106	215	211	4	
	Central College	1,386	1,386	0	100	100	0	
	Clarke University	1,225	1,011	214	81	72	9	
	Coe College	1,420	1,420	0	211	211	0	
	Cornell College	1,122	1,122	0	283	283	0	
	Divine Word College	117	117	0	38	38	0	
	Dordt College	1,425	1,371	54	72	71	1	
	Drake University	5,139	3,383	1,756	586	431	155	
	University of Dubuque	1,862	1,695	167	435	423	12	
	Emmaus Bible College	187	187	0	33	33	0	
	Faith Baptist Bible College	267	229	38	22	15	7	
	Graceland University	2,366	1,635	731	497	396	101	
	Grand View University	2,129	2,096	33	367	365	2	
	Grinnell College	1,721	1,721	0	438	438	0	
	Iowa Wesleyan College	588	588	0	87	87	0	
	Loras College	1,570	1,517	53	166	163	3	
	Luther College	2,466	2,466	0	197	197	0	
	Maharishi University of Management	1,136	319	817	203	104	99	
	Mercy College of Health Sciences	826	826	0	82	82	0	
	Morningside College	2,542	1,305	1,237	153	133	20	
	Mount Mercy College	1,761	1,476	285	159	123	36	
	Northwestern College	1,233	1,233	0	129	129	0	
	Des Moines University	1,763	0	1,763	307	0	307	
	Palmer College of Chiropractic	1,038	39	999	124	10	114	
	St Ambrose University	3,607	2,743	864	427	351	76	
	Simpson College	1,749	1,712	37	131	130	1	
	Upper Iowa University	6,257	5,585	672	1,186	1,080	106	
	Wartburg College	1,714	1,714	0	196	196	0	
	William Penn University	1,948	1,740	208	445	417	28	
3 Community College	Kaplan University - Mason City	234	211	23	31	29	2	
	Kaplan University - Cedar Rapids	527	497	30	88	80	8	
	Hamilton Technical College	175	175	0	31	31	0	
	Ashford University	869	869	0	236	236	0	
	Waldorf College	1,103	1,103	0	274	274	0	
	Kaplan University - Davenport	628	548	80	144	129	15	
	Kaplan University - Cedar Falls	456	393	63	62	53	9	
	Kaplan University - Des Moines	888	792	96	144	125	19	
	ITT Technical Institute-Clive	210	210	0	44	44	0	
	ITT Technical Institute - Cedar Rapids	37	37	0	6	6	0	
	4 Private for-Profit, 4-year or above	Des Moines Area Community College	20,167	20,167	0	3,620	3,620	0
		Iowa Valley -- Ellsworth Community College	1,037	1,037	0	205	205	0
Eastern Iowa Community College		8,694	8,694	0	1,780	1,780	0	
Hawkeye Community College		5,803	5,803	0	818	818	0	
Indian Hills Community College		4,604	4,604	0	435	435	0	
Iowa Central Community College		5,697	5,697	0	1,036	1,036	0	
Iowa Lakes Community College		2,649	2,649	0	305	305	0	
Iowa Western Community College		6,991	6,991	0	1,329	1,329	0	
Kirkwood Community College		15,323	15,323	0	2,351	2,351	0	
Iowa Valley -- Marshalltown Community College		2,117	2,117	0	230	230	0	
North Iowa Area Community College		3,206	3,206	0	331	331	0	
Northeast Iowa Community College		5,201	5,201	0	265	265	0	
Northwest Iowa Community College		1,628	1,628	0	124	124	0	
Southeastern Community College		3,225	3,225	0	401	401	0	
Southwestern Community College		1,573	1,573	0	122	122	0	
Western Iowa Tech Community College	6,331	6,331	0	1,221	1,221	0		
5 Private Not-for-Profit,2-year	St Lukes College	184	184	0	24	24	0	
6 Private for-Profit, 2-year	Capri College	77	77	0	4	4	0	
	Capri College	124	124	0	10	10	0	
	Iowa School of Beauty	30	30	0	5	5	0	
	Faust Institution of Cosmetology	14	14	0	2	2	0	
	Iowa School of Beauty	181	181	0	51	51	0	
	La' James International College	78	78	0	14	14	0	
	La' James International College	136	136	0	26	26	0	
	LaJames College of Hairstyling	77	77	0	8	8	0	
	La' James International College	62	62	0	11	11	0	
	Iowa School of Beauty	73	73	0	2	2	0	
	La' James International College	38	38	0	7	7	0	
	La' James International College	43	43	0	9	9	0	
	Capri College	121	121	0	23	23	0	
	Iowa School of Beauty	64	64	0	10	10	0	
	EQ School of Hair Design	19	19	0	2	2	0	
	Vatterott College	161	161	0	45	45	0	
	Faust Institution of Cosmetology	19	19	0	8	8	0	
	Totals	232,790	205,982	26,808	32,534	29,719	2,815	



Exhibit G
Iowa College Student Aid Commission
Student and Faculty Ethnic Diversity
Fall 2013
Total Enrollment and Enrollment of Minority Population Groups - Iowa Residents Only

		Total Enrollment	Enrollment Under Grad Students	Enrollment Grad Students	Total Students Racial/Ethnic Minority Groups	Undergraduate Students Racial/Ethnic Minority Groups	Graduate Students Racial/Ethnic Minority Groups
1 Regent Universities	Iowa State University	19,855	18,009	1,846	2,112	1,933	179
	University of Iowa	16,916	12,012	4,904	2,179	1,682	497
	University of Northern Iowa	10,842	9,411	1,431	790	699	91
2 Private Not-for-Profit,4-year	Allen College	550	375	175	20	15	5
	AIB College of Business	868	868	0	116	116	0
	Briar Cliff University	711	615	96	94	91	3
	Buena Vista University	2,100	2,000	100	174	171	3
	Central College	1,071	1,071	0	53	53	0
	Clarke University	740	584	156	25	17	8
	Coe College	735	735	0	30	30	0
	Cornell College	195	195	0	15	15	0
	Divine Word College	0	0	0	0	0	0
	Dordt College	559	538	21	10	10	0
	Drake University	2,404	1,113	1,291	236	143	93
	University of Dubuque	836	736	100	97	89	8
	Emmaus Bible College	79	79	0	7	7	0
	Faith Baptist Bible College	118	103	15	7	4	3
	Graceland University	586	436	150	44	40	4
	Grand View University	1,829	1,798	31	254	252	2
	Grinnell College	220	220	0	28	28	0
	Iowa Wesleyan College	378	378	0	34	34	0
	Loras College	597	554	43	35	32	3
	Luther College	743	743	0	46	46	0
	Maharishi University of Management	98	42	56	22	10	12
	Mercy College of Health Sciences	792	792	0	76	76	0
	Morningside College	2,014	835	1,179	87	68	19
	Mount Mercy College	1,643	1,364	279	138	103	35
	Northwestern College	627	627	0	27	27	0
	Des Moines University	550	0	550	42	0	42
Palmer College of Chiropractic	234	10	224	19	2	17	
St Ambrose University	1,710	1,160	550	177	127	50	
Simpson College	1,509	1,472	37	85	84	1	
Upper Iowa University	2,140	1,916	224	196	179	17	
Wartburg College	1,148	1,148	0	84	84	0	
William Penn University	1,420	1,225	195	183	158	25	
3 Private for-Profit,4-year	Kaplan University - Mason City	196	176	20	22	20	2
	Kaplan University - Cedar Rapids	506	478	28	81	74	7
	Hamilton Technical College	106	106	0	20	20	0
	Ashford University	380	380	0	48	48	0
	Waldorf College	251	251	0	16	16	0
	Kaplan University - Davenport	404	353	51	94	87	7
	Kaplan University - Cedar Falls	437	376	61	57	48	9
	Kaplan University - Des Moines	854	763	91	138	120	18
	ITT Technical Institute-Clive	208	208	0	44	44	0
	ITT Technical Institute - Cedar Rapids	37	37	0	6	6	0
4 Community Colleges	Des Moines Area Community College	19,798	19,798	0	3,533	3,533	0
	Iowa Valley -- Ellsworth Community College	797	797	0	48	48	0
	Eastern Iowa Community College	7,670	7,670	0	1,463	1,463	0
	Hawkeye Community College	5,687	5,687	0	771	771	0
	Indian Hills Community College	4,227	4,227	0	346	346	0
	Iowa Central Community College	5,210	5,210	0	745	745	0
	Iowa Lakes Community College	2,251	2,251	0	159	159	0
	Iowa Western Community College	5,036	5,036	0	566	566	0
	Kirkwood Community College	14,154	14,154	0	2,020	2,020	0
	Iowa Valley -- Marshalltown Community College	2,017	2,017	0	0	0	0
	North Iowa Area Community College	2,965	2,965	0	238	238	0
	Northeast Iowa Community College	4,718	4,718	0	239	239	0
	Northwest Iowa Community College	1,525	1,525	0	115	115	0
	Southeastern Community College	2,731	2,731	0	342	342	0
	Southwestern Community College	1,471	1,471	0	86	86	0
Western Iowa Tech Community College	5,534	5,534	0	994	994	0	
5 Private Not-for-Profit,2-year	St Lukes College	116	116	0	10	10	0
6 Private for-Profit, 2-year	Capri College	50	50	0	2	2	0
	Capri College	124	124	0	10	10	0
	Iowa School of Beauty	30	30	0	5	5	0
	Faust Institution of Cosmetology	14	14	0	2	2	0
	Iowa School of Beauty	181	181	0	51	51	0
	La' James International College	78	78	0	14	14	0
	La' James International College	68	68	0	13	13	0
	LaJames College of Hairstyling	66	66	0	7	7	0
	La' James International College	60	60	0	11	11	0
	Iowa School of Beauty	73	73	0	2	2	0
	La' James International College	28	28	0	7	7	0
	La' James International College	42	42	0	9	9	0
	Capri College	68	68	0	13	13	0
	Iowa School of Beauty	64	64	0	10	10	0
	EQ School of Hair Design	16	16	0	0	0	0
	Vatterott College	160	160	0	44	44	0
Faust Institution of Cosmetology	19	19	0	8	8	0	
Totals	167,244	153,340	13,904	19,951	18,791	1,160	



Exhibit H
Iowa College Student Aid Commission
Student and Faculty Ethnic Diversity
Fall 2013
State Financial Aid to Minority Students at Iowa Colleges and Universities

		Iowa Tuition Grant (ITG) Awards- Total*	Iowa Tuition Grant (ITG) Awards to Minority Students	Iowa Grants (IG)- Total*	Iowa Grants (IG) to Minority Students	Vocational Technical Tuition Grants (IVTTG)-Total*	Vocational Technical Tuition Grants	All Iowa Opportunity Scholarships - Total*	All Iowa Opportunity Scholarships to Minority Students	State Aid Awards Total for these four Programs*	State Aid Awards Total for these four Programs*
1	Regent Universities										
	Iowa State University	0	0	145	19	0	0	90	23	235	42
	University of Iowa	0	0	78	15	0	0	56	22	134	37
	University of Northern Iowa	0	0	110	2	0	0	43	10	153	12
2	Private Not-for-Profit, 4-year										
	Allen College	297	14	12	0	0	0	0	0	309	14
	AIB College of Business	532	78	22	0	0	0	0	0	554	78
	Briar Cliff University	363	62	7	3	0	0	3	1	376	66
	Buena Vista University	1,669	139	32	7	0	0	2	1	1,703	147
	Central College	685	44	9	3	0	0	6	0	700	47
	Clarke University	398	15	6	0	0	0	0	0	404	15
	Coe College	427	24	7	4	0	0	2	0	436	28
	Cornell College	108	7	2	0	0	0	0	0	110	7
	Divine Word College	0	0	0	0	0	0	0	0	0	0
	Dordt College	329	7	5	0	0	0	2	1	336	8
	Drake University	478	73	7	2	0	0	1	0	486	75
	University of Dubuque	0	0	0	0	0	0	0	0	0	0
	Emmaus Bible College	49	5	4	1	0	0	0	0	53	6
	Faith Baptist Bible College	102	7	4	0	0	0	0	0	106	7
	Graceland University	180	21	4	0	0	0	0	0	184	21
	Grand View University	1,203	207	27	7	0	0	6	3	1,219	217
	Grinnell College	75	13	1	0	0	0	1	0	77	13
	Iowa Wesleyan College	294	29	7	1	0	0	0	0	301	30
	Loras College	298	15	4	0	0	0	0	0	319	17
	Luther College	347	21	5	1	0	0	1	0	353	22
	Maharishi University of Management	38	6	1	0	0	0	0	0	0	6
	Mercy College of Health Sciences	516	71	11	4	0	0	1	0	528	75
	Morningside College	531	50	8	1	0	0	6	3	545	54
	Mount Mercy College	842	42	11	0	0	0	2	0	855	42
	Northwestern College	411	20	6	1	0	0	2	0	410	21
	Des Moines University	0	0	0	0	0	0	0	0	0	0
	Palmer College of Chiropractic	0	0	0	0	0	0	0	0	0	0
	St Ambrose University	613	78	9	2	0	0	0	0	629	82
	Simpson College	878	59	19	4	0	0	8	0	905	63
	Upper Iowa University	1,282	117	30	2	0	0	3	0	1,315	119
	Wartburg College	630	56	8	2	0	0	4	2	642	60
	William Penn University	777	107	23	2	0	0	1	0	801	109
3	Private for-Profit, 4-year										
	Kaplan University - Mason City	59	9	6	1	0	0	0	0	65	10
	Kaplan University - Cedar Rapids	197	31	24	6	0	0	3	1	224	38
	Hamilton Technical College	0	0	0	0	0	0	0	0	0	0
	Ashford University	124	12	4	2	0	0	2	0	130	14
	Waldorf College	115	11	3	2	0	0	2	0	133	14
	Kaplan University - Davenport	120	28	9	2	0	0	1	1	131	31
	Kaplan University - Cedar Falls	96	11	7	0	0	0	0	0	103	11
	Kaplan University - Des Moines	219	38	20	5	0	0	1	0	240	43
	ITT Technical Institute—Clive	0	0	0	0	0	0	0	0	0	0
	ITT Technical Institute – Cedar Rapids	0	0	0	0	0	0	0	0	0	0
4	Community Colleges										
	Des Moines Area Community College	0	0	92	26	615	107	40	8	747	141
	Iowa Valley – Ellsworth Community College	0	0	16	4	25	0	9	0	50	4
	Eastern Iowa Community College	0	0	39	9	150	19	4	1	193	29
	Hawkeye Community College	0	0	22	8	234	14	20	2	276	24
	Indian Hills Community College	0	0	14	0	227	18	15	0	256	18
	Iowa Central Community College	0	0	18	0	138	9	13	0	169	9
	Iowa Lakes Community College	0	0	17	1	110	2	9	1	136	4
	Iowa Western Community College	0	0	22	0	146	2	9	0	177	2
	Kirkwood Community College	0	0	74	17	485	54	21	2	1,026	151
	Iowa Valley – Marshalltown Community College	0	0	0	0	20	4	2	0	2	4
	North Iowa Area Community College	0	0	12	3	87	5	6	0	105	8
	Northeast Iowa Community College	0	0	29	0	166	3	10	0	205	3
	Northwest Iowa Community College	0	0	5	0	87	11	2	0	94	11
	Southeastern Community College	0	0	26	4	103	8	2	0	131	12
	Southwestern Community College	0	0	12	2	51	2	12	0	75	4
	Western Iowa Tech Community College	0	0	17	5	201	22	33	10	251	37
5	Private Not-for-Profit, 2-year										
	St Lukes College	79	8	2	0	0	0	1	0	3	8
6	Private for-Profit, 2-year										
	Capri College	0	0	0	0	0	0	0	0	0	0
	Iowa School of Beauty	0	0	0	0	0	0	0	0	0	0
	Faust Institution of Cosmetology	0	0	0	0	0	0	0	0	0	0
	Iowa School of Beauty	0	0	0	0	0	0	0	0	0	0
	La' James International College	0	0	0	0	0	0	0	0	0	0
	La' James International College	0	0	0	0	0	0	0	0	0	0
	LaJames College of Hairstyling	0	0	0	0	0	0	0	0	0	0
	La' James International College	0	0	0	0	0	0	0	0	0	0
	Iowa School of Beauty	0	0	0	0	0	0	0	0	0	0
	La' James International College	0	0	0	0	0	0	0	0	0	0
	La' James International College	0	0	0	0	0	0	0	0	0	0
	Capri College	0	0	0	0	0	0	0	0	0	0
	Iowa School of Beauty	0	0	0	0	0	0	0	0	0	0
	EQ School of Hair Design	0	0	0	0	0	0	0	0	0	0
	Vatterott College	0	0	0	0	0	0	0	0	0	0
	Faust Institution of Cosmetology	0	0	0	0	0	0	0	0	0	0
	Totals	15,361	1,535	1,114	180	2,845	280	457	92	19,777	2,087

*Program totals are based only on reported Ethnic Diversity Groups
Source: Iowa College Student Aid Commission ethnic diversity report



Exhibit I
Iowa College Student Aid Commission
Student and Faculty Ethnic Diversity
Fall 2013
Faculty at Iowa Colleges and Universities

		Total Faculty	Faculty Excluding Non-Resident Alien and Race/Ethnicity Unknown	Faculty from Minority Population Groups
1 Regent Universities	Iowa State University	1,869	1,791	332
	University of Iowa	2,834	2,486	437
	University of Northern Iowa	756	726	85
2 Private Not-for-Profit,4-year	Allen College	44	44	3
	AIB College of Business	65	65	2
	Briar Cliff University	65	65	2
	Buena Vista University	338	330	16
	Central College	115	114	9
	Clarke University	155	155	2
	Coe College	167	166	10
	Cornell College	124	117	12
	Divine Word College	26	26	5
	Dordt College	170	168	2
	Drake University	437	430	44
	University of Dubuque	87	86	13
	Emmaus Bible College	37	37	5
	Faith Baptist Bible College	28	28	1
	Graceland University	88	85	12
	Grand View University	232	232	10
	Grinnell College	244	203	38
	Iowa Wesleyan College	51	50	5
	Loras College	165	165	6
	Luther College	257	248	14
	Maharishi University of Management	139	131	28
	Mercy College of Health Sciences	124	124	5
	Morningside College	222	212	4
	Mount Mercy College	150	147	11
	Northwestern College	145	142	6
	Des Moines University	96	92	9
	Palmer College of Chiropractic	87	87	10
St Ambrose University	424	392	33	
Simpson College	207	146	8	
Upper Iowa University	611	449	66	
Wartburg College	179	175	12	
William Penn University	120	109	4	
3 Private for-Profit,4-year	Kaplan University - Mason City	8	6	0
	Kaplan University - Cedar Rapids	40	18	0
	Hamilton Technical College	13	13	2
	Ashford University	85	42	3
	Waldorf College	44	44	1
	Kaplan University - Davenport	59	40	2
	Kaplan University - Cedar Falls	48	26	0
	Kaplan University - Des Moines	80	56	8
	ITT Technical Institute—Clive	35	35	1
	ITT Technical Institute – Cedar Rapids	20	19	4
4 Community Colleges	Des Moines Area Community College	348	348	25
	Iowa Valley -- Ellsworth Community College	88	81	11
	Eastern Iowa Community College	672	662	56
	Hawkeye Community College	520	518	34
	Indian Hills Community College	141	141	3
	Iowa Central Community College	464	408	8
	Iowa Lakes Community College	192	150	1
	Iowa Western Community College	352	321	28
	Kirkwood Community College	302	301	15
	Iowa Valley -- Marshalltown Community College	104	97	3
	North Iowa Area Community College	176	168	3
	Northeast Iowa Community College	347	341	6
	Northwest Iowa Community College	136	136	3
	Southeastern Community College	187	164	10
Southwestern Community College	124	124	2	
Western Iowa Tech Community College	382	358	12	
5 Private Not-for-Profit,2-year	St Lukes College	49	49	1
6 Private for-Profit, 2-year	Capri College	31	31	0
	Capri College	28	28	1
	Iowa School of Beauty	5	5	0
	Faust Institution of Cosmetology	4	4	0
	Iowa School of Beauty	15	15	0
	La' James International College	7	7	0
	La' James International College	8	8	0
	LaJames College of Hairstyling	15	15	1
	La' James International College	6	6	1
	Iowa School of Beauty	5	5	0
	La' James International College	4	4	0
	La' James International College	6	6	1
	Capri College	25	25	1
	Iowa School of Beauty	5	5	0
	EQ School of Hair Design	11	11	1
	Vatterott College	29	29	2
Faust Institution of Cosmetology	5	5	0	
Totals	16,083	14,898	1,511	