

November / December 2010

TOTTERWOODS

THE DNR'S MAGAZINE OF CONSERVATION AND RECREATION

2011
CALENDAR

 Anniversary of the
Farmall Letter Series Tractor!

FARMALL PRIDE Reversible Jacket



*Famed Farmall
tractor art
across the back
of the jacket's
nylon side*

*The nylon side provides wind
resistance, and reverses to a high-
quality fleece for extra warmth*

Share the rich history of American farming

Show your *Farmall Pride* with our all new reversible jacket. The black nylon side provides lightweight warmth and wind resistance while showcasing iconic Farmall tractors and the Farmall logo across the back. The reverse side stands out with expertly crafted high-quality fleece that recalls the famous Farmall Red. The front of both sides features an embroidered Farmall tractor that will show your pride in a true American classic. Zip it up with a sculpted tractor zipper pull. A spectacular value ... satisfaction guaranteed.

Dependable and affordable; satisfaction guaranteed

Available in four sizes, the *Farmall Pride* Reversible Jacket is a remarkable value at just \$129*, payable in four convenient installments of \$32.25 each, and backed by our 30-day money-back guarantee. This is a limited-time offer, so don't delay. To acquire yours, send no money now; just return the Reservation Application today!

www.bradfordexchange.com/iowa

©2010 BGE 01-11683-001-ZI



RESERVATION APPLICATION

SEND NO MONEY NOW

THE
BRADFORD EXCHANGE
— APPAREL & ACCESSORIES —

9345 Milwaukee Avenue · Niles, IL 60714-1393

YES. Please reserve the *Farmall Pride* Reversible Jacket for me as described in this announcement. I've circled my size preference below.

Limit: one per order.

Please Respond Promptly

☐ M(38-40) ☐ L(42-44) ☐ XL(46-48) ☐ XXL(50-52)

Mrs. Mr. Ms.

Name (Please Print Clearly)

Address

City

State

Zip

01-11683-001-E51621

*Plus \$9.99 shipping and service. Please allow 4 to 8 weeks after the first payment for shipment. All sales are subject to product availability and order acceptance.



**"GET AWAY FROM IT ALL"
BREAK AND WE'LL REWARD YOU!**

Make Your Reservations NOW for a November or December stay at The Natural Gait and receive a 20% discount!

Holidays Excluded - Thanksgiving holiday weekend (Nov 24-28),
Christmas holiday weekend (Dec 23-26), New Year's Eve (12/31).

- Log Cabins, Bunkrooms, Bunkhouses
- Campsites • Lodge & Arenas
- Fishing - Canoeing - Kayaking
- Hiking Trails • Horse Trails
- Music - Festivals - Clinics

**We're having a BLAST
in Northeast Iowa - Come join us!**



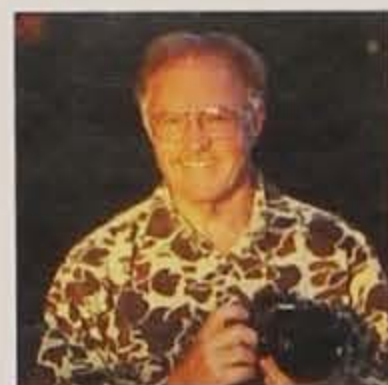
You'll want to stay forever!
Near Marquette, IA

(877) 776-2208
ntrlgait@acegroup.cc

**TheNaturalGait.com
TNGhappenings.com**



RON HULSE of Knoxville has spent eight years photographing wildlife, insects and birds near Lake Red Rock when not cycling, hiking or volunteering. An avid paddler, he also helps find sponsors to reintroduce osprey locally and raises awareness of siltation issues at the reservoir. He's a recent retiree with "more hobbies than I have time for."



TY SMEDES is a full-time writer and photographer from Urbandale. Published in more than 25 magazines, his work includes images of wildlife, wildflowers and scenics, along with photography of Iowa's cultural events and attractions. He teaches photography classes and leads photo-tours to the Eastern Sierras and Africa. His new coffee-table book, "Capturing Iowa's Seasons," is sold at 1-866-410-0230 or www.iowanaturestore.com.



TONY MOLINE is a Dubuque native, where he takes advantage of the area's natural beauty and diverse wildlife to craft his images. His photographic prints are available through Outside the Lines Art Gallery in Dubuque's Cable Car Square. www.OTLAG.com. 377 Bluff Street, Dubuque. 563-583-9343



MARY STEALY is an avid photographer of her grandchildren, wildlife and flowers. Mary and her husband live on 20 acres of wooded land near Ventura. She specializes in winter photography when animals stand out against the snow. She also assists with rehabilitating injured wildlife. "I was able to help with an adult bald eagle that came in to be rehabbed," she says. She's also released rehabbed owls, squirrels, opossum and raccoons into their woods. She passed on her love of wildlife and photography to her grandchildren and has written a children's book using her photography to tell the story.

DNR STAFF PHOTOGRAPHERS



CLAY SMITH witnesses some of Iowa's best images from behind his video and camera lenses. A professional photographer for more than 30 years, including 14 as videographer and producer for Iowa Public Television, he spent the last 10 as staff photographer for *Iowa Outdoors* magazine and www.iowadnr.gov. He lives in Urbandale with his wife, Gayle.

STAFF

Brian Button - EDITOR-IN-CHIEF
Alan Foster - MANAGING EDITOR
Jacob Zweibohmer - ART DIRECTOR
Jessie Brown - COPY EDITOR
Joe Wilkinson - WRITER/PHOTOGRAPHER
Clay Smith - PHOTOGRAPHER
Julie Tack - MARKETING AND PUBLICITY
Kevin Baskins - COMMUNICATIONS BUREAU CHIEF

STATE PRESERVES ADVISORY BOARD

Deborah Lewis, - CHAIR, Ames
Stephen Dinsmore, Ames
Armando Rosales, Atlantic
Inger Lamb, Polk City
Carl Kurtz, St. Anthony
Patricia L. Boddy, Des Moines
Lynn Alex, Iowa City

NATURAL RESOURCE COMMISSION

Gregory Drees - CHAIR, Arnolds Park
Tammi Kircher - VICE-CHAIR, Keokuk
R. Kim Francisco - SECRETARY, Lucas
Janelle Rettig, Iowa City

Elizabeth Garst, Coon Rapids
Dennis Schemmel, Grimes
Margo Underwood, Mason City

ENVIRONMENTAL PROTECTION COMMISSION

Charlotte Hubbell - CHAIR, Des Moines
Marty Stimson - VICE-CHAIR, Cedar Rapids
Lorna Puntillo - SECRETARY, Sioux City
Paul Johnson, Decorah
David Petty, Eldora
Susan Heathcote, Des Moines
Gene Ver Steeg, Inwood
Dee Bruemmer, Davenport
John Glenn, Centerville

SUBSCRIBER SERVICES • 800.361.8072

ADVERTISING OFFICE

Larson Enterprises, Dave Larson at 515.440.2810 or LARSON6@MCHSI.COM

DNR EXECUTIVE STAFF

Patricia L. Boddy - INTERIM DIRECTOR

DIVISION ADMINISTRATORS

Cindy Axne - MANAGEMENT SERVICES • Diane Ford - CONSERVATION AND RECREATION
Wayne Gieselman - ENVIRONMENTAL SERVICES

DNR Central Office, 515.281.5918 • TTY users contact Relay Iowa, 800.735.2942

Iowa Outdoors (ISSN 0021-0471) is published bimonthly by the Iowa Department of Natural Resources, Des Moines, Iowa 50319-0034.

Periodicals postage paid Des Moines, IA. SUBSCRIPTION RATES: \$15 FOR ONE YEAR.

\$24 FOR TWO YEARS AND \$30 FOR THREE YEARS. PRICES SUBJECT TO CHANGE WITHOUT NOTICE. Include mailing label for renewals and address changes. POSTMASTER: Send changes to the *Iowa Outdoors*, P.O. Box 8462 Red Oak, IA 51591-1462

Federal and state regulations prohibit discrimination on the basis of race, color, national origin, sex or disability. State law also prohibits discrimination on the basis of creed, sexual orientation, gender identity, religion, pregnancy or public accommodation. If you believe that you have been discriminated against in any program, activity, or facility as described above, or for more information, write: Director, DNR, 502 E. 9th St., Des Moines, IA 50319-0034 or the Equal Employment Opportunity Commission, Washington, D.C. 20240.

DNR MISSION

To conserve and enhance our natural resources in cooperation with individuals and organizations to improve the quality of life for Iowans and ensure a legacy for future generations.

EDITORIAL MISSION

We strive to open the door to the beauty and uniqueness of Iowa's natural resources, inspire people to get outside and experience Iowa and to motivate outdoor-minded citizens to understand and care for our natural resources.

MAKE A DIFFERENCE

The Keepers of the Land program matches volunteers with natural resource service needs statewide. Give back to Iowa's lands, waters and skies. Call 515-281-0878 to match your interests with needs or visit www.keepersoftheland.org.

HOW TO DONATE

Charitable giving of land, funds, and goods and services greatly enhances Iowa's outdoor living. Contact: Diane Ford at 515-281-6341.

SHOW YOUR SUPPORT

The DNR Nature Store offers apparel and gifts with profits for state parks. Order online at www.iowanaturestore.com.

SUBSCRIBER SERVICES

To subscribe, or for any subscription issues or questions call 1-800-361-8072 Monday through Friday from 7 a.m. to 11 p.m. or weekends 8 a.m. to 6 p.m. For ease in processing, please have an issue with a mailing label available at time of call. To purchase a single copy for \$3.50, call 515-281-5918.

LEARN MORE

Our website, www.iowadnr.gov, is loaded with information for all ages and needs. Buy licenses, reserve campsites or learn more about our environment online.



KEOKUK I O W A

KEOKUK AREA CONVENTION AND TOURISM BUREAU

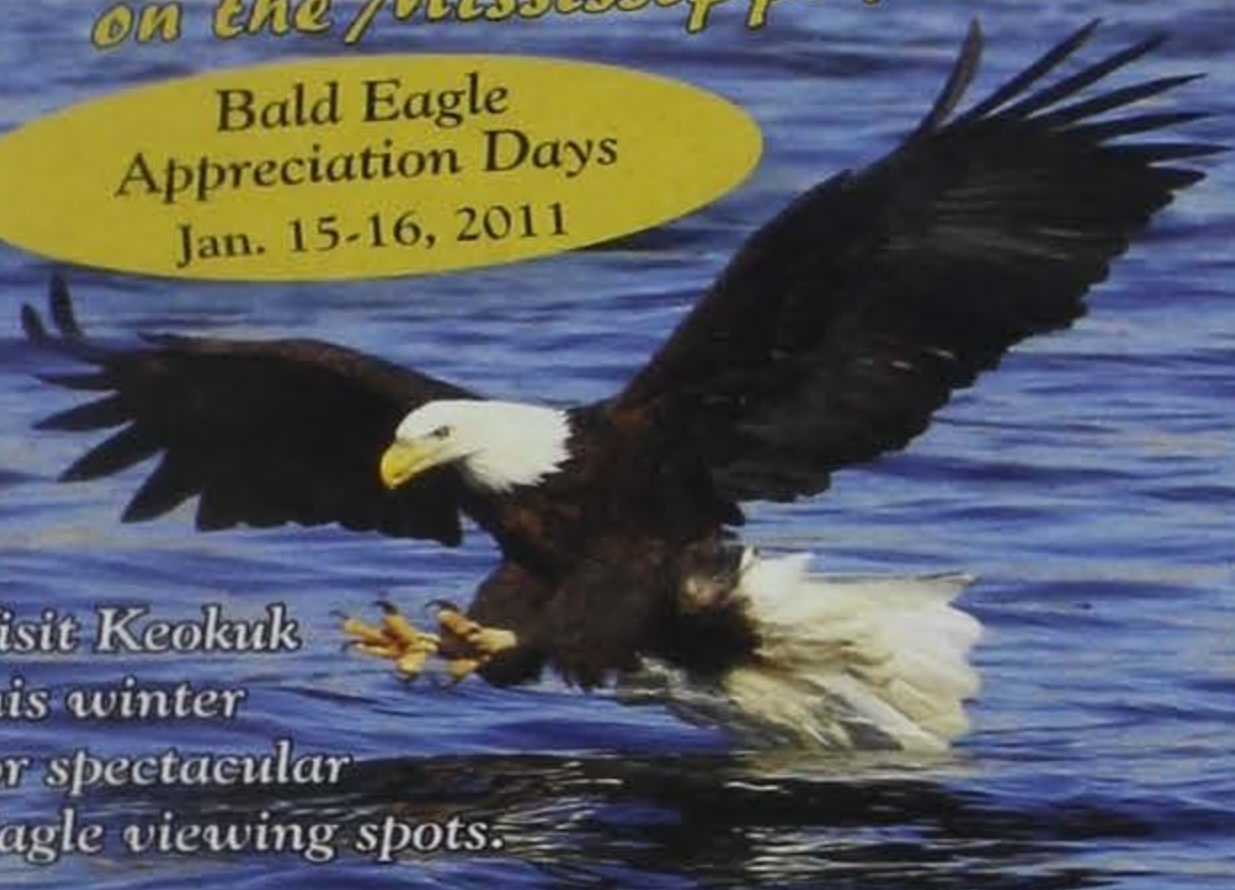
*Winter home of the largest
concentration of Bald Eagles
on the Mississippi River.*

Bald Eagle
Appreciation Days
Jan. 15-16, 2011

Visit Keokuk
this winter
for spectacular
Eagle viewing spots.

Contact us for more information on Eagle viewing
and Bald Eagle Appreciation Days

KEOKUKIOWATOURISM.ORG
800-383-1219



Marshalltown

make it your destination
CONVENTION & VISITORS BUREAU

Kick-off your holiday season
in Marshalltown!



Stroll downtown Marshalltown
on Saturday evening,
November 20th and enjoy
holiday entertainment and
goodies while you watch the
dancing holiday lights on the
courthouse. Spend the night
at one of our hotels and receive
coupons for meals and
shopping throughout the
weekend. For
complete package
details and
reservations visit
our website.



1.800.697.3155

www.visitmarshalltown.com



They grow up fast. Give them
a gift that will last a lifetime.

COLLEGE SAVINGS

Iowa
529 PLAN

Michael L. Fitzgerald, Treasurer of State

Call 888-672-9116 • Visit www.collegesavingsiowa.com

State Library Of Iowa
State Documents Center
Miller Building
Des Moines, Iowa

LIMITED TO ONLY
5,000 PIECES!

Own a towering tribute to the eagle's majesty

Now a commanding hand-painted sculpture brings to life the regal splendor of the eagle. Every magnificent hand-cast detail is highlighted under gleaming cold-cast bronze, and the phrase, "Let your spirit soar to the highest summit" adds further inspiration.



Three-dimensional
sculpture is thrilling to
behold from any angle

Exceptional value; satisfaction guaranteed

Summit of Majesty is available exclusively from The Bradford Exchange. It comes with a 365-day money-back guarantee and is issued in a limited edition of just 5,000 pieces. To obtain it at the issue price, you need send no money now. You can pay for your sculpture in five convenient monthly installments of \$29.99 each, the first billed before shipment, for a total of \$149.95*. Just return the Reservation Application today!

RESERVATION APPLICATION SEND NO MONEY NOW

THE
BRADFORD EXCHANGE
—HOME DECOR—

9345 Milwaukee Avenue · Niles, IL 60714-1393

YES. Please reserve the "Legends in the Field" Light Catcher for me as described in this announcement.

Limit: one per order. Please Respond Promptly

Signature _____

Mrs. Mr. Ms. _____

Name (Please Print Clearly)

Address _____

City _____

State _____

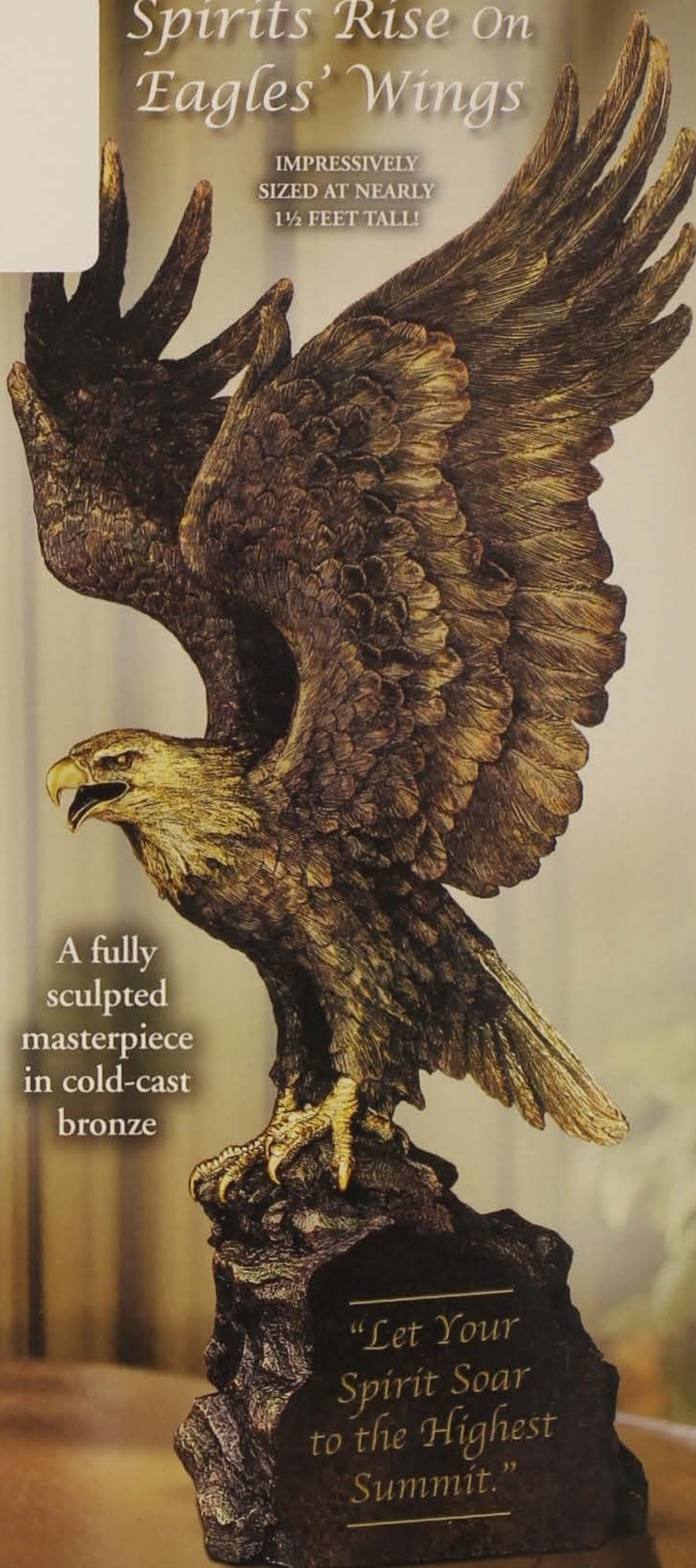
Zip _____

01-03996-001-E51621

*Plus \$10.99 shipping and service. Limited-edition presentation restricted to 295 crafting days. Please allow 4-8 weeks after initial payment for shipment. Sales subject to product availability and order acceptance.

Spirits Rise On Eagles' Wings

IMPRESSIVELY
SIZED AT NEARLY
1½ FEET TALL!



A fully
sculpted
masterpiece
in cold-cast
bronze

"Let Your
Spirit Soar
to the Highest
Summit."

www.bradfordexchange.com/3996

©2010 BGE 01-03996-001-BILUS

November / December 2010

IN THE WOODS

THE DNR'S MAGAZINE OF CONSERVATION AND RECREATION

2011
CALENDAR



**Celebrating the 70th
Anniversary of the
Farmall Letter Series Tractor!**

THE FARMALL PRIDE Reversible Jacket



*Famed Farmall
tractor art
across the back
of the jacket's
nylon side*



*The nylon side provides wind
resistance, and reverses to a high-
quality fleece for extra warmth*

Share the rich history of American farming

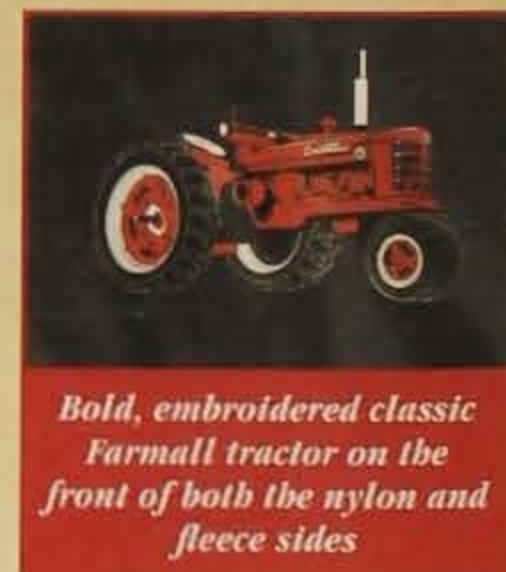
Show your *Farmall Pride* with our all new reversible jacket. The black nylon side provides lightweight warmth and wind resistance while showcasing iconic Farmall tractors and the Farmall logo across the back. The reverse side stands out with expertly crafted high-quality fleece that recalls the famous Farmall Red. The front of both sides features an embroidered Farmall tractor that will show your pride in a true American classic. Zip it up with a sculpted tractor zipper pull. A spectacular value ... satisfaction guaranteed.

Dependable and affordable; satisfaction guaranteed

Available in four sizes, the *Farmall Pride* Reversible Jacket is a remarkable value at just \$129*, payable in four convenient installments of \$32.25 each, and backed by our 30-day money-back guarantee. This is a limited-time offer, so don't delay. To acquire yours, send no money now; just return the Reservation Application today!

www.bradfordexchange.com/iowa

©2010 BGE 01-11683-001-ZI



*Bold, embroidered classic
Farmall tractor on the
front of both the nylon and
fleece sides*

RESERVATION APPLICATION

SEND NO MONEY NOW

**THE
BRADFORD EXCHANGE**
— APPAREL & ACCESSORIES —

9345 Milwaukee Avenue · Niles, IL 60714-1393

YES. Please reserve the *Farmall Pride* Reversible Jacket for me as described in this announcement. I've circled my size preference below.
Limit: one per order.

Please Respond Promptly

☐ M(38-40) ☐ L(42-44) ☐ XL(46-48) ☐ XXL(50-52)

Mrs. Mr. Ms.

Name (Please Print Clearly)

Address

City

State

Zip

01-11683-001-E51621

*Plus \$9.99 shipping and service. Please allow 4 to 8 weeks after the first payment for shipment. All sales are subject to product availability and order acceptance.



PLAN NOW FOR THAT FALL OR WINTER
"GET AWAY FROM IT ALL"
BREAK AND WE'LL REWARD YOU!

**Make Your Reservations
NOW for a November
or December stay at
The Natural Gait
and receive a
20% discount!**

Holidays Excluded - Thanksgiving holiday weekend (Nov 24-28),
Christmas holiday weekend (Dec 23-26), New Year's Eve (12/31).

- Log Cabins, Bunkrooms, Bunkhouses
- Campsites • Lodge & Arenas
- Fishing - Canoeing - Kayaking
- Hiking Trails • Horse Trails
- Music - Festivals - Clinics



**We're having a BLAST
in Northeast Iowa - Come join us!**



You'll want to stay forever!
Near Marquette, IA

(877) 776-2208
ntrlgait@acegroup.cc

TheNaturalGait.com
TNGhappenings.com



Contributors



RON HULSE of Knoxville has spent eight years photographing wildlife, insects and birds near Lake Red Rock when not cycling, hiking or volunteering. An avid paddler, he also helps find sponsors to reintroduce osprey locally and raises awareness of siltation issues at the reservoir. He's a recent retiree with "more hobbies than I have time for."



TY SMEDES is a full-time writer and photographer from Urbandale. Published in more than 25 magazines, his work includes images of wildlife, wildflowers and scenics, along with photography of Iowa's cultural events and attractions. He teaches photography classes and leads photo-tours to the Eastern Sierras and Africa. His new coffee-table book, "Capturing Iowa's Seasons," is sold at 1-866-410-0230 or www.iowanaturestore.com.



TONY MOLINE is a Dubuque native, where he takes advantage of the area's natural beauty and diverse wildlife to craft his images. His photographic prints are available through Outside the Lines Art Gallery in Dubuque's Cable Car Square. www.OTLAG.com. 377 Bluff Street, Dubuque. 563-583-9343



MARY STEALY is an avid photographer of her grandchildren, wildlife and flowers. Mary and her husband live on 20 acres of wooded land near Ventura. She specializes in winter photography when animals stand out against the snow. She also assists with rehabilitating injured wildlife. "I was able to help with an adult bald eagle that came in to be rehabbed," she says. She's also released rehabbed owls, squirrels, opossum and raccoons into their woods. She passed on her love of wildlife and photography to her grandchildren and has written a children's book using her photography to tell the story.

DNR STAFF PHOTOGRAPHERS



CLAY SMITH witnesses some of Iowa's best images from behind his video and camera lenses. A professional photographer for more than 30 years, including 14 as videographer and producer for Iowa Public Television, he spent the last 10 as staff photographer for *Iowa Outdoors* magazine and www.iowadnr.gov. He lives in Urbandale with his wife, Gayle.

IOWA OUTDOORS

NOVEMBER / DECEMBER 2010 • VOLUME 69 • ISSUE 6

STAFF

Brian Button - EDITOR-IN-CHIEF
Alan Foster - MANAGING EDITOR
Jacob Zweibohmer - ART DIRECTOR
Jessie Brown - COPY EDITOR
Joe Wilkinson - WRITER/PHOTOGRAPHER
Clay Smith - PHOTOGRAPHER
Julie Tack - MARKETING AND PUBLICITY
Kevin Baskins - COMMUNICATIONS BUREAU CHIEF

STATE PRESERVES ADVISORY BOARD

Deborah Lewis, - CHAIR, Ames
Stephen Dinsmore, Ames
Armando Rosales, Atlantic
Inger Lamb, Polk City
Carl Kurtz, St. Anthony
Patricia L. Boddy, Des Moines
Lynn Alex, Iowa City

NATURAL RESOURCE COMMISSION

Gregory Drees - CHAIR, Arnolds Park
Tammi Kircher - VICE-CHAIR, Keokuk
R. Kim Francisco - SECRETARY, Lucas
Janelle Rettig, Iowa City

Elizabeth Garst, Coon Rapids
Dennis Schemmel, Grimes
Margo Underwood, Mason City
ENVIRONMENTAL

PROTECTION COMMISSION

Charlotte Hubbell - CHAIR, Des Moines
Marty Stimson - VICE-CHAIR, Cedar Rapids
Lorna Puntillo - SECRETARY, Sioux City
Paul Johnson, Decorah
David Petty, Eldora
Susan Heathcote, Des Moines
Gene Ver Steeg, Inwood
Dee Bruemmer, Davenport
John Glenn, Centerville

SUBSCRIBER SERVICES • 800.361.8072

ADVERTISING OFFICE

Larson Enterprises, Dave Larson at 515.440.2810 or LARSON6@MCHSI.COM

DNR EXECUTIVE STAFF

Patricia L. Boddy - INTERIM DIRECTOR

DIVISION ADMINISTRATORS

Cindy Axne - MANAGEMENT SERVICES • Diane Ford - CONSERVATION AND RECREATION
Wayne Gieselman - ENVIRONMENTAL SERVICES

DNR Central Office, 515.281.5918 • TTY users contact Relay Iowa, 800.735.2942

Iowa Outdoors (ISSN 0021-0471) is published bimonthly by the Iowa Department of Natural Resources, Des Moines, Iowa 50319-0034. Periodicals postage paid Des Moines, IA. SUBSCRIPTION RATES: \$15 FOR ONE YEAR.

\$24 FOR TWO YEARS AND \$30 FOR THREE YEARS. PRICES SUBJECT TO CHANGE WITHOUT NOTICE. Include mailing label for renewals and address changes. POSTMASTER: Send changes to the *Iowa Outdoors*, P.O. Box 8462 Red Oak, IA 51591-1462.

Federal and state regulations prohibit discrimination on the basis of race, color, national origin, sex or disability. State law also prohibits discrimination on the basis of creed, sexual orientation, gender identity, religion, pregnancy or public accommodation. If you believe that you have been discriminated against in any program, activity, or facility as described above, or for more information, write: Director, DNR, 502 E. 9th St., Des Moines, IA 50319-0034 or the Equal Employment Opportunity Commission, Washington, D. C. 20240.

DNR MISSION

To conserve and enhance our natural resources in cooperation with individuals and organizations to improve the quality of life for Iowans and ensure a legacy for future generations.

EDITORIAL MISSION

We strive to open the door to the beauty and uniqueness of Iowa's natural resources, inspire people to get outside and experience Iowa and to motivate outdoor-minded citizens to understand and care for our natural resources.

MAKE A DIFFERENCE

The Keepers of the Land program matches volunteers with natural resource service needs statewide. Give back to Iowa's lands, waters and skies. Call 515-281-0878 to match your interests with needs or visit www.keepersoftheland.org.

HOW TO DONATE

Charitable giving of land, funds, and goods and services greatly enhances Iowa's outdoor living. Contact: Diane Ford at 515-281-6341.

SHOW YOUR SUPPORT

The DNR Nature Store offers apparel and gifts with profits for state parks. Order online at www.iowanaturestore.com.

SUBSCRIBER SERVICES

To subscribe, or for any subscription issues or questions call 1-800-361-8072 Monday through Friday from 7 a.m. to 11 p.m. or weekends 8 a.m. to 6 p.m. For ease in processing, please have an issue with a mailing label available at time of call. To purchase a single copy for \$3.50, call 515-281-5918.

LEARN MORE

Our website, www.iowadnr.gov, is loaded with information for all ages and needs. Buy licenses, reserve campsites or learn more about our environment online.



Make It Yours
KEOKUK
 I O W A
 KEOKUK AREA CONVENTION AND TOURISM BUREAU

*Winter home of the largest
 concentration of Bald Eagles
 on the Mississippi River.*

Bald Eagle
 Appreciation Days
 Jan. 15-16, 2011

Visit Keokuk
 this winter
 for spectacular
 Eagle viewing spots.

Contact us for more information on Eagle viewing
 and Bald Eagle Appreciation Days

KEOKUKIOWATOURISM.ORG
800-383-1219



Marshalltown
 make it your destination
 CONVENTION & VISITORS BUREAU

Kick-off your holiday season
 in Marshalltown!



Stroll downtown Marshalltown
 on Saturday evening,
 November 20th and enjoy
 holiday entertainment and
 goodies while you watch the
 dancing holiday lights on the
 courthouse. Spend the night
 at one of our hotels and receive
 coupons for meals and
 shopping throughout the
 weekend. For
 complete package
 details and
 reservations visit
 our website.

1.800.697.3155
www.visitmarshalltown.com



They grow up fast. Give them
 a gift that will last a lifetime.

COLLEGE SAVINGS

Iowa
 529 PLANTM

Michael L. Fitzgerald, Treasurer of State

Call 888-672-9116 • Visit www.collegesavingsiowa.com



2010 DECEMBER

IOWA OUTDOORS

SUNDAY

MONDAY

TUESDAY

WEDNESDAY

THURSDAY

FRIDAY

SATURDAY



ON THE COVER:
A series of cascades tumble down 450 million-year-old dolomite cliffs at Malanaphy Springs State Preserve along the Upper Iowa River two miles northwest of Decorah in rugged Winneshiek County.
—BY CLAY SMITH

Order gifts from www.iowanaturestore.com or 866-410-0230

Fishing season closes on Mississippi River below navigation dams 11-13
Muskie season closes on Iowa Great Lakes

Hanukkah begins
Give Iowa Outdoors as a holiday gift
Order at 1-800-361-8072

Fall turkey gun/bow season closes
Archery only turkey and deer seasons close

First shotgun deer season opens



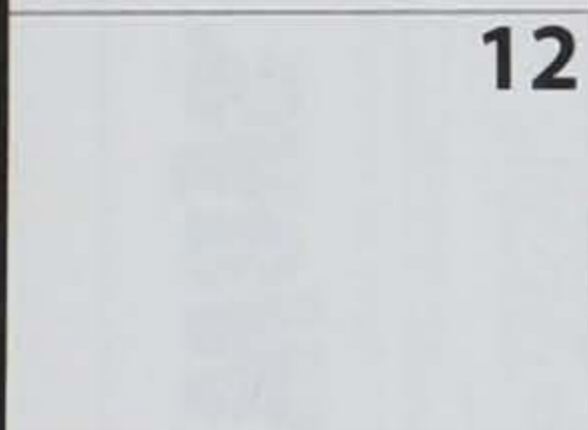
Give this calendar as a holiday gift; just \$5, order at 515-281-5918.

Pearl Harbor Remembrance Day

First shotgun deer season closes

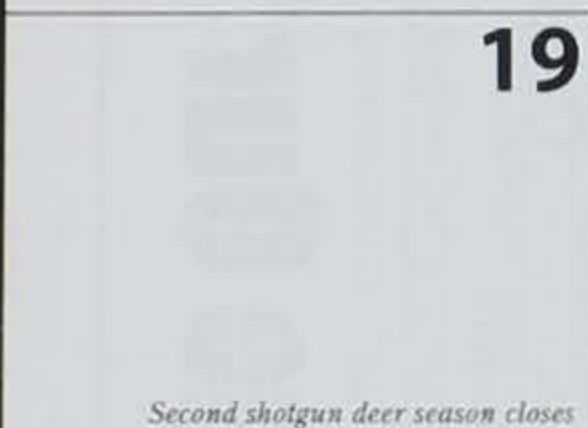
Last day of Hanukkah

Second shotgun deer season begins



Geminid meteor shower Dec. 13-14

Christmas bird count through end of December
2011 hunting and fishing licenses go on sale



Second shotgun deer season closes

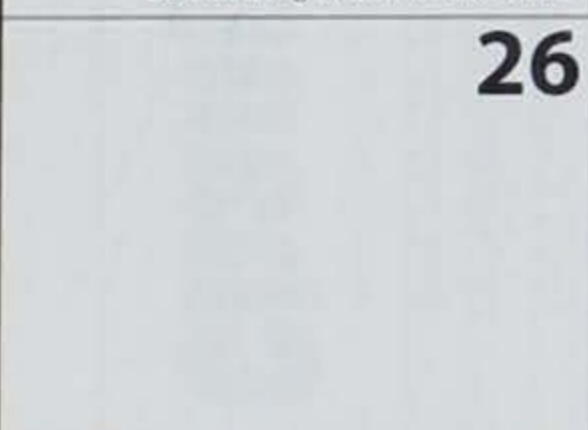
Late split deer and fall turkey bow season reopens
Late muzzleloader deer season begins.

Winter solstice—first day of winter

2009 blizzard covers northwest Iowa with up to 24 inches of snow

Nonresident antlerless deer holiday season, Dec. 24 - Jan. 2

Christmas



A fox squirrel attempts to conserve energy on a blustery subzero winter day.
—BY RON HUELSE

New Year's Eve
Ring in the New Year at Honey Creek Resort—
for event details call 877-677-3344



NOVEMBER 2010

S	M	T	W	T	F	S
1	2	3	4	5	6	7
8	9	10	11	12	13	14
15	16	17	18	19	20	21
22	23	24	25	26	27	28
29	30					

JANUARY 2011

S	M	T	W	T	F	S
1	2	3	4	5	6	7
8	9	10	11	12	13	14
15	16	17	18	19	20	21
22	23	24	25	26	27	28
29	30	31				



Household Hazardous Materials



Change the way we . . .

Read labels
Purchase
Use and store
Dispose of
Household Hazardous Materials



Iowa Department
of Natural Resources
515.281.5918

Make our chores and projects easier, but they:

- Require special care
- Are the No. 1 cause of poisonings in children
- May contaminate land and water resources

What can we do now?

- Look for "GREEN" alternatives
- Purchase only what you need
- Read product label for use, storage and disposal recommendations

Go to www.SafeSmartSolutions.org
Find out more about **Household Hazardous Materials** and free Regional Collection Center disposal.



Change Our Ways. Change Our World.

STATE FOREST NURSERY ORDER FORM 2010-2011



CALL 800-865-2477 FAX 515-233-1131
www.iowatreeplanting.com
2404 S DUFF AVE, AMES, IA 50010

PLACE ORDERS
until sold out

AUGUST 1 - MAY 31

NAME _____		EMAIL _____	
ADDRESS _____		CITY _____	STATE _____ ZIP _____
DAYTIME PHONE _____		IS THIS PLANTING PART OF A COST SHARE PROGRAM? (Circle One) Y N	
<input type="checkbox"/> AMES PICK UP / week of pick up: _____ 1st choice _____ 2nd choice _____		<input type="checkbox"/> HOME DELIVERY / week of delivery: _____ 1st choice _____ 2nd choice _____	
ORDERED LAST YEAR? (Circle One) Y N		IF YES, PLEASE LIST ORDER # IF KNOWN: _____	
FALL 2010 or SPRING 2011 DELIVERY? (Circle One) FALL SPRING		IN WHICH COUNTY WILL YOU PLANT? _____	

MINIMUM ORDER IS 500 PLANTS except to fill in plantings from the previous year or for Specialty Packets which can be ordered individually.
WHEN ORDERING BY MAIL DO NOT SEND MONEY with your order. A bill will be sent later. Checks, VISA or MasterCard are accepted.

HARDWOODS

Seedling Price / 100 Size 8-16" 17-24"

Each species must be ordered in increments of 100.	Sugar Maple	\$37	\$52
	Silver Maple		\$52
SHIPPING/TAX INFORMATION	River Birch		
	Shellbark Hickory	\$40	
Shipping charges and applicable taxes are additional and will be figured at the time of order.	Shagbark Hickory 6"-12" Seedlings	\$40	
	Northern Pecan		
	Hackberry	\$37	\$52
	Kentucky Coffeetree	\$37	\$52
	Black Walnut	\$40	\$55
	Sycamore	\$37	\$52
	Cottonwood 14" Cuttings	\$37	
	Cottonwood 12" Rooted Cuttings	\$37	male select \$37
	Hybrid Poplar 14" Cuttings	\$37	
	Hybrid Poplar 12" Rooted Cuttings	\$37	
	Aspen	\$37	\$52
	Black Cherry	\$37	\$52
	White Oak	\$40	\$55
	Swamp White Oak	\$40	\$55
	Chinkapin Oak	\$40	\$55
	Bur Oak	\$40	\$55
	Black Oak		
	Pin Oak		
	Red Oak	\$40	\$55
	Mixed Oak	\$40	\$55
	Hybrid Willow 14" Cuttings	\$37	
	Hybrid Willow 12" Rooted Cuttings	\$37	
	American Linden or Basswood		

EVERGREENS

(available spring only) Seedling Price / 100 Size 8-16" 17-24"

Each species must be ordered in increments of 100.	Concolor or White Fir	\$25	\$40
	Eastern Red Cedar	\$25	\$40
	Norway Spruce	\$25	\$40
	White Spruce	\$25	\$40
	Jack Pine	\$25	\$40
	Red Pine		
	Eastern White Pine	\$25	\$40
	Scotch Pine		

SMALL TREES & SHRUBS

Each species must be ordered in increments of 100.	Black Chokeberry	\$40	\$55
	Serviceberry		
	Buttonbush		
	Silky Dogwood	\$37	\$52
	Gray Dogwood	\$37	\$52
	Redosier Dogwood	\$37	\$52
	Hazelnut	\$40	\$55
	Ninebark	\$40	\$55
	Wild Plum	\$40	\$55
	Nanking Cherry		
	Chokecherry	\$40	\$55
	Sandbar Willow 16" Cuttings	\$40	
	Elderberry	\$37	
	Arrowwood	\$40	\$55
	Nannyberry	\$40	\$55
	Highbush Cranberry	\$40	\$55

GIFT IDEAS

Quan

Gift Certificate Call 1-800-865-2477 to order!

SPECIALTY PACKETS

Species Name Size

Create-a-Packet select 50 plants of each species \$110 price/pkt Quan <input type="checkbox"/>	1 st species:		\$110 price/pkt	Quan <input type="checkbox"/>	Turkey Packet (200 plants) Bur Oak, White Oak, Pin Oak, Gray Dogwood
	2 nd species:		\$110 price/pkt	Quan <input type="checkbox"/>	Pheasant Packet (200 plants) Red Cedar, Wild Plum, Ninebark, Gray Dogwood
	3 rd species:		\$110 price/pkt	Quan <input type="checkbox"/>	Quail Packet (200 plants) Wild Plum, Gray Dogwood
	4 th species:		\$20 price/pkt	Quan <input type="checkbox"/>	Songbird Packet (20 Plants) Bur Oak, White Pine, Wild Plum, Chokecherry, Gray Dogwood, Serviceberry

THE STATE FOREST NURSERY is supported entirely by its sales of trees and shrubs. There are NO TAX DOLLARS used for its operation.

STUDENTS
ages 5-19 in grades K-12

IOWATER

announces

RIVER of WORDS® 2011

Environmental Poetry & Art
International Competition



2010
IOWA WINNER
Grades K-3 ART

Franky

Coby Adams
age 8

Dubuque, Iowa

Deadline is Dec. 1, but entries are accepted year-round for next year's contest.



For more information and entry forms, visit:
www.iowadnr.gov/row/

**THE GREAT
OUTDOORS**

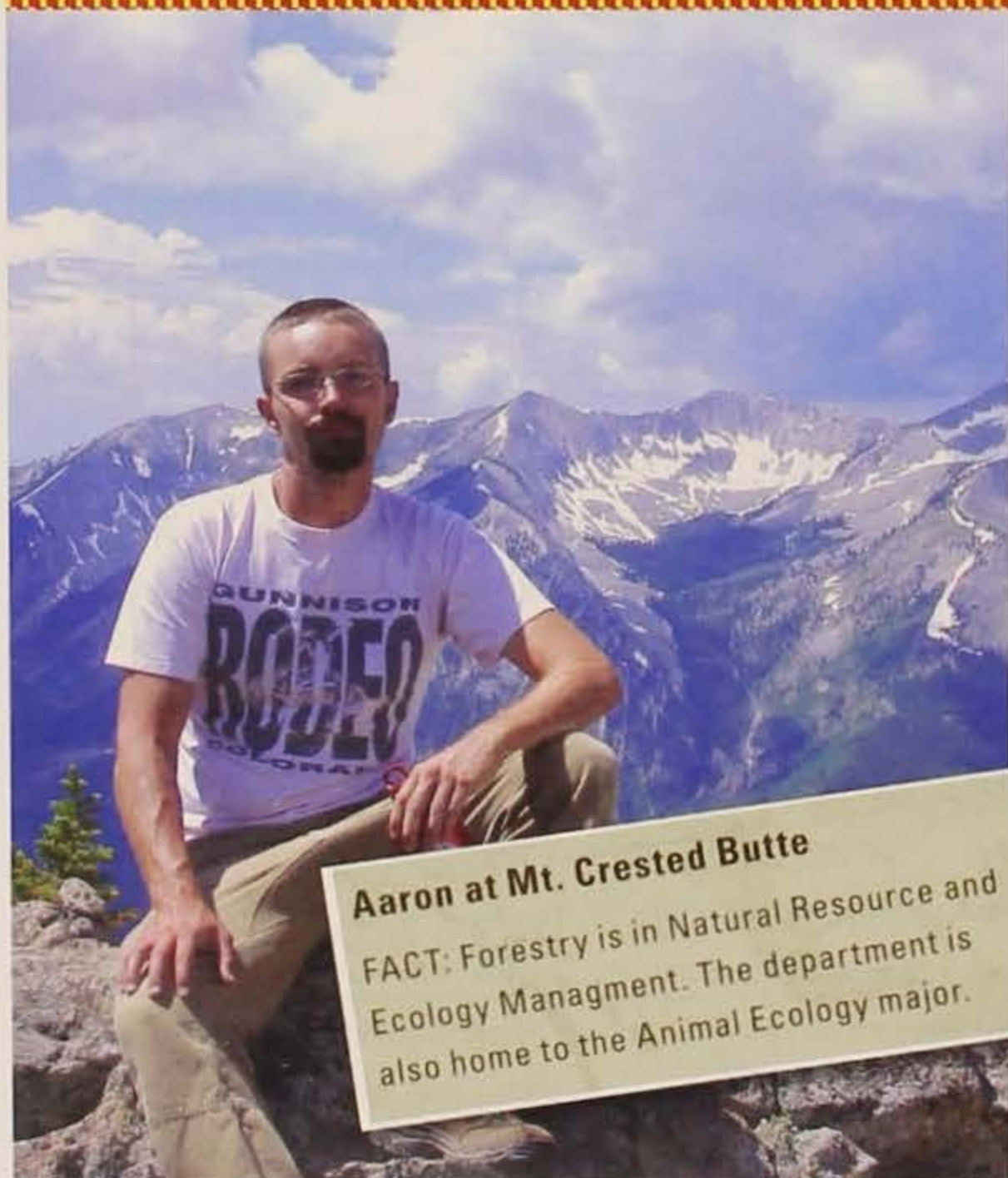
Like Never Before.
Experience Iowa's Loess Hills.

Hike,
BIKE
drive,
play
and
STAY



Sponsored by The Loess Hills Alliance
For a free guide call 888-623-4232

Live green. Learn green. **Earn green.**



Aaron at Mt. Crested Butte

FACT: Forestry is in Natural Resource and Ecology Management. The department is also home to the Animal Ecology major.

Forestry student Aaron Rector didn't want a desk job. So he worked for the Colorado State Forest Service where he spent 45 hours in the field for every hour he spent in the office. He had plenty of time to analyze the forest ecosystems in plain sight of lynx, badgers and bobcats. And he landed it thanks to the College of Agriculture and Life Sciences at Iowa State University. Our resources helped Aaron gain real-life experience to enhance his learning and resume. And, for Aaron, that meant a career outside of the office.

IOWA STATE UNIVERSITY
College of Agriculture and Life Sciences

515-294-2766 | www.agstudent.iastate.edu

IOWA OUTDOORS

BACK ISSUES AVAILABLE

FOR ONLY **\$5.00 EACH**



TO ORDER YOUR ISSUES TODAY
CALL **515-281-5918.**



2011 JANUARY

IOWA OUTDOORS

SUNDAY	MONDAY	TUESDAY	WEDNESDAY	THURSDAY	FRIDAY	SATURDAY																																										
 <p>A young whitetail deer displays dominance while protecting a food source following a northern Iowa snowstorm —BY MARY STEALY</p>						1 New Year's Day Annual New Year's Day paddle below Saylorville Dam, Polk County																																										
2 Look for bald eagles feeding below dams and open water areas	3 ● Fox squirrels begin to mate	4 Canada goose, brant season in north zone closes to hunting	5 1912 State record low temperature set in Washta, -47° Canada goose, brant season in south zone closes to hunting	6 Light goose season closes in north zone	7 Light goose season closes in north zone	8 Mid-winter bald eagle and migratory bird counts begin Light goose conservation order opens																																										
9 Light goose season closes in north zone	10 Pheasant, late muzzleloader and archery deer seasons close Fall turkey archery season closes 2010 hunting and fishing licenses expire	11 ● January antlerless deer season begins in southern Iowa	12 ● 1912 State record low temperature set in Washta, -47° Canada goose, brant season in south zone closes to hunting	13 Light goose season closes in north zone	14 Light goose season closes in north zone	15 Mid-winter bald eagle and migratory bird counts begin Light goose conservation order opens																																										
16 4th Annual Winter Bridal Show 11a.m.-3p.m. at Honey Creek Resort State Park; for details call 877-677-3344	17 Martin Luther King Jr. Day	18 ● Best ice fishing occurs late December to mid-January Domestic rainbow trout spawning peaks	19 ● Registration for DNR hunting and conservation camps begins iowadnr.gov/camps.html	20 Search woods for shed antlers	21 Light goose season closes in north zone	22 Mid-winter bald eagle and migratory bird counts begin Light goose conservation order opens																																										
23 Fox and coyote mating season begins (mid- to late January)	24 Aerial deer survey runs into February	25 ● Best ice fishing occurs late December to mid-January Domestic rainbow trout spawning peaks	26 ● Search woods for shed antlers	27 Search woods for shed antlers	28 Search woods for shed antlers	29 Search woods for shed antlers																																										
30 January antlerless deer season closes	31 Quail, partridge, ruffed grouse, squirrel and trapping (excluding beaver) seasons close	27th Annual Bald Eagle Appreciation Days January 15-16, 2011 KEOKUKIOWATOURISM.ORG 800-383-1219 				DECEMBER 2010 <table> <tr><th>S</th><th>M</th><th>T</th><th>W</th><th>T</th><th>F</th><th>S</th></tr> <tr><td></td><td></td><td></td><td>1</td><td>2</td><td>3</td><td>4</td></tr> <tr><td>5</td><td>6</td><td>7</td><td>8</td><td>9</td><td>10</td><td>11</td></tr> <tr><td>12</td><td>13</td><td>14</td><td>15</td><td>16</td><td>17</td><td>18</td></tr> <tr><td>19</td><td>20</td><td>21</td><td>22</td><td>23</td><td>24</td><td>25</td></tr> <tr><td>26</td><td>27</td><td>28</td><td>29</td><td>30</td><td>31</td><td></td></tr> </table>	S	M	T	W	T	F	S				1	2	3	4	5	6	7	8	9	10	11	12	13	14	15	16	17	18	19	20	21	22	23	24	25	26	27	28	29	30	31	
S	M	T	W	T	F	S																																										
			1	2	3	4																																										
5	6	7	8	9	10	11																																										
12	13	14	15	16	17	18																																										
19	20	21	22	23	24	25																																										
26	27	28	29	30	31																																											
				FEBRUARY <table> <tr><th>S</th><th>M</th><th>T</th><th>W</th><th>T</th><th>F</th><th>S</th></tr> <tr><td></td><td></td><td>1</td><td>2</td><td>3</td><td>4</td><td>5</td></tr> <tr><td>6</td><td>7</td><td>8</td><td>9</td><td>10</td><td>11</td><td>12</td></tr> <tr><td>13</td><td>14</td><td>15</td><td>16</td><td>17</td><td>18</td><td>19</td></tr> <tr><td>20</td><td>21</td><td>22</td><td>23</td><td>24</td><td>25</td><td>26</td></tr> <tr><td>27</td><td>28</td><td></td><td></td><td></td><td></td><td></td></tr> </table>			S	M	T	W	T	F	S			1	2	3	4	5	6	7	8	9	10	11	12	13	14	15	16	17	18	19	20	21	22	23	24	25	26	27	28					
S	M	T	W	T	F	S																																										
		1	2	3	4	5																																										
6	7	8	9	10	11	12																																										
13	14	15	16	17	18	19																																										
20	21	22	23	24	25	26																																										
27	28																																															



2011 FEBRUARY

IOWA OUTDOORS

SUNDAY

MONDAY

TUESDAY

WEDNESDAY

THURSDAY

FRIDAY

SATURDAY

1

2

3

4

5

Great horned owls are on the nest
in early February

Groundhog Day

1934 work began on the Zebulon Pike
Lock and Dam in Dubuque

State record low temperature tied
in Elkader, -47°, in 1996

Bald eagles are staking territories
and building nests

6

7

8

9

10

11

12

Cardinals and chickadees
begin singing mating calls.

2010: Earthquake felt in eastern Iowa

1875 Meteor strikes near Amana,
leaving 800 pounds of meteorites

13

14

15

16

17

18

19

Murder Mystery Dinner at Honey Creek
Resort 877-677-3344
Valentine's Day

Walleye season closes on Iowa Great Lakes

Great Backyard Bird Count Feb. 18-21
www.birdsource.org/gbbc

1909 Wallace Stegner, prominent author
and conservation voice, born at Lake Mills

20

21

22

23

24

25

26

Permanent ice fishing shelters must
be removed from state lakes unless
deadline is extended

Presidents Day

Turkey vultures return when snow melts
and carcasses become visible

Chorus frogs begin singing
as soon as ice goes out

1846 William F. "Buffalo Bill" Cody
born near LeClaire

27

28

Cottontail hunting season ends

Although ice fishing slows, river fishing
is excellent for walleyes in open water
below dams.

Winter serenity at Backbone State Park
in Delaware County
-BY CLAY SMITH



JANUARY

S	M	T	W	T	F	S
						1
2	3	4	5	6	7	8
9	10	11	12	13	14	15
16	17	18	19	20	21	22
23	24	25	26	27	28	29
30	31					

MARCH

S	M	T	W	T	F	S
		1	2	3	4	5
6	7	8	9	10	11	12
13	14	15	16	17	18	19
20	21	22	23	24	25	26
27	28	29	30	31		



WAXA

WAXA

2011 MARCH

IOWA OUTDOORS

SUNDAY

MONDAY

TUESDAY

WEDNESDAY

THURSDAY

FRIDAY

SATURDAY

1

2

3

4

5

Look for returning robins and bluebirds

All That Wine & Jazz Weekend,
Honey Creek Resort 877-677-3344

6

7

8

9

10

11

12

Mardi Gras

Check out spring deals for outdoor wear, books
and guides at www.iowanaturestore.com
or 866-410-0230
Ash Wednesday

Woodcock mating display flights begin

Northern pike netting begins after ice-out
on Mississippi River and Iowa Great Lakes

13

14

15

16

17

18

19

Owls will be on nestlings
Daylight-saving time starts

Look for blooming pasque flowers

REAP education grants due May 15,
www.iowareap.com

Dogs prohibited on all state-owned
game management areas until July 15

Spring peeper frogs may begin calling
in eastern and southeast Iowa

St. Patrick's Day

Honey of a Quilt Show at Honey Creek
Resort through Sunday, 877-677-3344.

Cottontails may be seen courting—
jumping airborne and chasing
mates under the moonlight

20

21

22

23

24

25

26

Vernal equinox - first day of spring

1961 Iowa Legislature chooses
the oak as Iowa's official tree

Spring tree planting can begin
if frost is gone from ground

Listen for gobbling wild turkeys

Watch for coyote pups in wild areas

Take photos of woodland Dutchman's
breeches and dogtooth violets in bloom

27

28

29

30

31

After ice-out, migratory waterfowl return

Beavers begin making scent mounds
of piled mud, grass and sticks coated
with scent oils near ponds

1933 President Franklin Roosevelt
signs the bill to create the Civilian
Conservation Corps

Three turkeys in various stages of flight take
off on a snowy runway.
—BY RON HUELSE

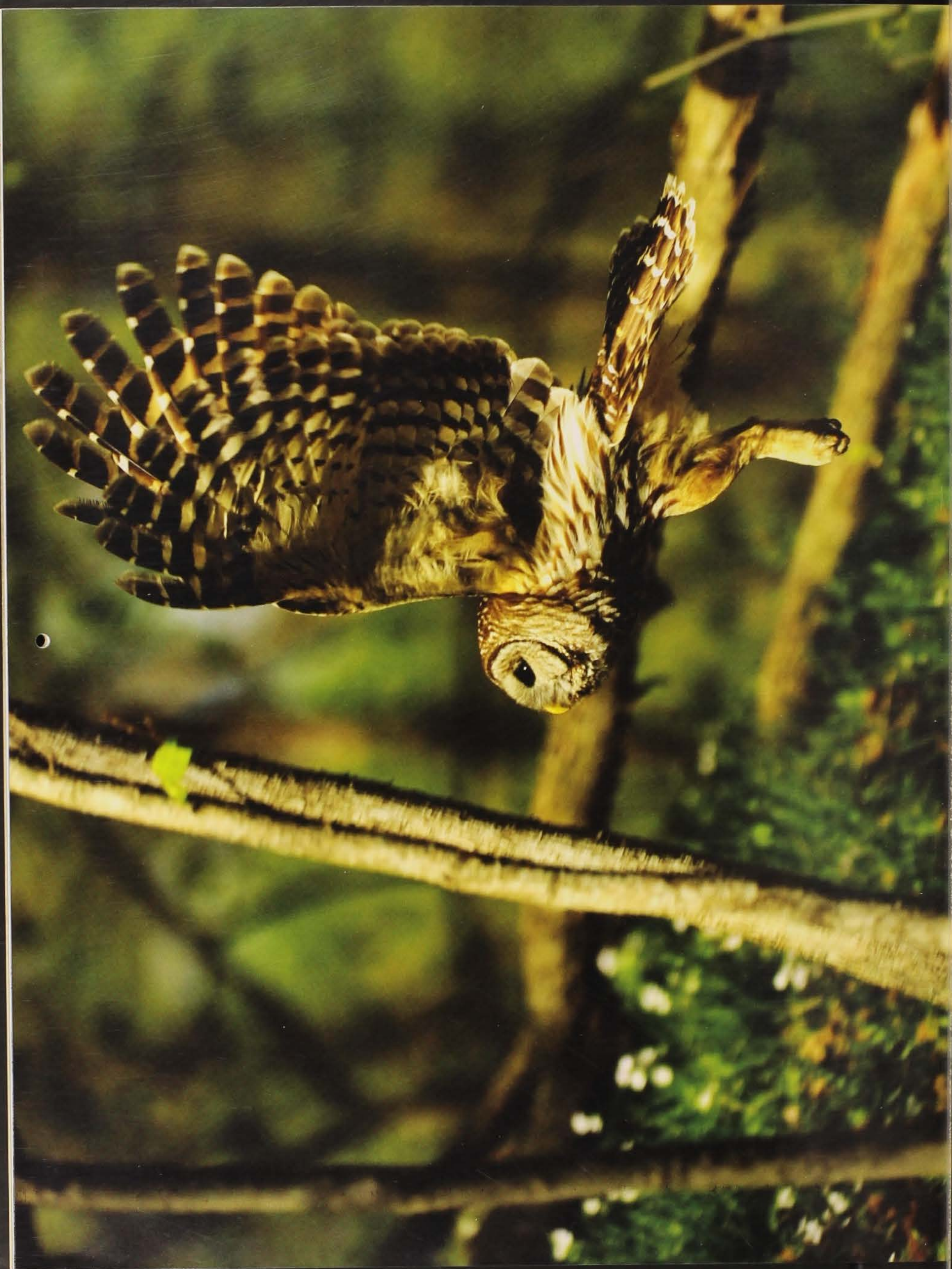


FEBRUARY

S	M	T	W	T	F	S
		1	2	3	4	5
6	7	8	9	10	11	12
13	14	15	16	17	18	19
20	21	22	23	24	25	26
27	28					

APRIL

S	M	T	W	T	F	S
					1	2
3	4	5	6	7	8	9
10	11	12	13	14	15	16
17	18	19	20	21	22	23
24	25	26	27	28	29	30



LOWYA

2011 APRIL

IOWA OUTDOORS

SUNDAY

MONDAY

TUESDAY

WEDNESDAY

THURSDAY

FRIDAY

SATURDAY

					1	2
					April Fools' Day Campsite reservations begin for Fourth of July weekend; 1-877-IAPARKS or reserveiaparks.com	Full waterfowl migration typically underway
● 3	4	5	6	7	8	9
Weekly trout stocking begins	DNR's deer and raccoon spotlight surveys typically begin Walleye gill netting underway	Safety education classes begin; check out www.iowadnr.gov for dates and locations.	1982 Iowa's latest subzero temperature recorded, -9°F at Manchester	Look for fox pups in wild areas	Youth turkey season runs through Sunday	Gosling hatch often begins this time of year
10	11	12	13	14	15	16
Watch water areas for return of shorebirds	First turkey season runs through Thursday	1954 Iowa Conservation Commission launches first-in-the-nation TV show "Outdoor Shop Talk" produced by staff Reserve camp sites and cabins; 1-877-IAPARKS or reserveiaparks.com	Eagle hatch begins	2010: Wisconsin meteor lights up northern Iowa skies	Light goose conservation order ends Turkeys on nests incubating eggs	Second turkey season runs through the 19th Around wetlands, look for return of garter snakes from hibernation
● 17	18	19	20	21	22	23
Palm Sunday Deer shed winter coats	Hike southern Iowa woods for morels	American toad begins singing	Third turkey season runs through the 26th	Save money and reduce emissions—install compact fluorescent lightbulbs	41st Earth Day Good Friday 1980 Iowa's earliest official 100° day recorded at Fort Dodge and Waterloo	
● 24	25	26	27	28	29	30
Easter Sunday Bobcat mating begins	Pheasants and quail begin nesting	Catfish begin biting on dead fish in warm, shallow waters	Fourth turkey season runs through May 15		Arbor Day Plant a shade tree on south or west side of home to reduce cooling bills	Iowa income taxes due: Support wildlife; check the Fish and Wildlife Fund box on your tax form Walleye seasons opens on Iowa Great Lakes



A female barred owl (*Strix varia*) takes off from a forest floor carpeted in wildflowers.
—BY RON HUELSE

Battle of Pea Ridge Civil War Reenactment

April 29 - May 1, 2011

KEOKUKIOWATOURISM.ORG
800-383-1219

Make It Last
KEOKUK

24th Annual

MARCH

S	M	T	W	T	F	S
		1	2	3	4	5
6	7	8	9	10	11	12
13	14	15	16	17	18	19
20	21	22	23	24	25	26
27	28	29	30	31		

MAY

S	M	T	W	T	F	S
1	2	3	4	5	6	7
8	9	10	11	12	13	14
15	16	17	18	19	20	21
22	23	24	25	26	27	28
29	30	31				



TOXIA

TOXIA

2011 MAY

IOWA OUTDOORS

SUNDAY

MONDAY

TUESDAY

WEDNESDAY

THURSDAY

FRIDAY

SATURDAY

1

2

3

4

5

6

7

Look for return of whip-poor-wills

1890 Huge meteorite strikes
11 miles northwest of Forest City

1986 Inaugural convention of the
National Rivers Hall of Fame, Dubuque

Peak neo-tropical bird migration—including
hummingbirds, warblers and orioles—
through the month

Red-tailed hawks nesting
Cinco de Mayo

1897 General Assembly chooses
wild rose as Iowa's official flower

8

9

10

11

12

13

14

Mother's Day Buffet at Honey Creek's
Lakeshore Grille, 877-677-3344
Mother's Day

Yellow-headed blackbirds arrive

Watch water areas for beaver kits

15

16

17

18

19

20

21

Bluebirds hatch first of two broods.
Mourning doves cooing and mating.

DNR begins mourning dove surveys
Bike to work week www.bikeiowa.com

Bobolinks return from Argentina

Armed Forces Day
Muskie season opens on Iowa Great Lakes

22

23

24

25

26

27

28

1955 Goldfinch designated Iowa State Bird

Look for fireflies in central and southern Iowa

Pheasant hatch begins
Fawns born through first week of June

Frank Lloyd Wright-designed Cedar Rock
house opens for season near Quasqueton
1920 Backbone dedicated
as Iowa's first state park
1947 Snow falls over northwest two-thirds
of state with 10 inches at Le Mars

29

30

31

1955 Rock Creek Lake near Newton and
Green Valley Lake near Creston open to
fishing; limits of bass taken in 15 minutes.
Almost 5,000 anglers at Green Valley.

Memorial Day

State Forest Nursery stops taking seedling
orders until August

Spring tree planting ends

Best month to fish for most species. Fish
are near shore and spawning. River fishing
success depends on water clarity. Fish feeder
streams or canals where water is warmer.

May 1: Peak camping rates begins;
make reservations at reserveiaparks.com
or 1-877-IAPARKS

Hepatica graces a moss forest floor below the
dam at Lake Red Rock in Marion County.
—BY RON HUELSE



APRIL

S	M	T	W	T	F	S
					1	2
3	4	5	6	7	8	9
10	11	12	13	14	15	16
17	18	19	20	21	22	23
24	25	26	27	28	29	30

JUNE

S	M	T	W	T	F	S
			1	2	3	4
5	6	7	8	9	10	11
12	13	14	15	16	17	18
19	20	21	22	23	24	25
26	27	28	29	30		



2011 JUNE

IOWA OUTDOORS

SUNDAY

MONDAY

TUESDAY

WEDNESDAY

THURSDAY

FRIDAY

SATURDAY

Peak of songbird nesting
is June through July

Listen for singing bullfrogs and tree frogs.
Watch urban skies for return of night hawks

Get started on REAP private cost-share
grants for city and county conservation

1833 Iowa Territory opened for settlement

Can reserve campsites for Labor Day at
1-877-IAPARKS or reserveiaparks.com

Free Fishing Days through Sunday

1860 Worst tornado in Iowa history kills 141,
injures 329 from Hardin to Clinton counties

Fishing Derby at Honey Creek/
Rathbun Reservoir, 877-677-3344.

5

6

7

8

9

10

11

Quail and turkeys hatching
Herons nesting

DNR biologists begin breeding bird surveys

Save energy and money—
have air conditioners serviced

Lewis and Clark Festival June 10-12
at Lewis and Clark State Park in Onawa

12

13

14

15

16

17

18

Channel catfish and largemouth bass
spawning; fish riprap with a ball
of night crawlers for catfish.

2008 Cedar River at Cedar Rapids
crests at 19.12 feet above flood stage
and 11.12 feet above previous
record crests set in 1929 and 1851.

Flag Day
1998 Official one-day precipitation record
set with 13.18-inch rain in Atlantic

Outdoor Journey for Girls at Springbrook
Conservation Education Center, June 15-17
515-281-5918 or iowadnr.gov/camps.html

Turtles begin laying eggs

1673 Marquette and Joliet
come to the Mississippi River

19

20

21

22

23

24

25

Father's Day

Summer solstice—first day of summer

Hunting and Conservation Camp for boys
at Springbrook Conservation Education
Center June 22-24, 641-747-8383
or iowadnr.gov/camps.html

Check out summer deals for outdoor wear,
books and guides at 866-410-0230 or
www.iowanaturestore.com

26

27

28

29

30

Canada goose banding begins
through early June

Lakes begin to stratify by temperature.
In lakes 20 feet deep, a thermocline
will form around 10 feet devoid of
oxygen below that line. In deeper lakes,
the thermocline will be around 15 feet.
Fishing below the thermocline is fruitless.

TIP: Contour maps and depth finders will
help locate the thermocline.

Make sure to clean boats, trailers
and all related equipment after
each outing to prevent the spread
of aquatic nuisance species.

A fiery sunset closes out the day for
two lucky anglers at Clear Lake in
Cerro Gordo County.
—BY LOWELL WASHBURN



Start a new adventure in Marshalltown

Explore 160 acres of trails
Hike or bike portions of the
Heart of Iowa Nature Trail

Work on your golf game this season at one of
our six courses

Marshalltown
make it your destination
CONVENTION & VISITORS BUREAU

www.visitmarshalltown.com • 800.697.3155

MAY

S	M	T	W	T	F	S
1	2	3	4	5	6	7
8	9	10	11	12	13	14
15	16	17	18	19	20	21
22	23	24	25	26	27	28
29	30	31				

JULY

S	M	T	W	T	F	S
					1	2
3	4	5	6	7	8	9
10	11	12	13	14	15	16
17	18	19	20	21	22	23
24	25	26	27	28	29	30
31						



LOWE

LOWE

2011 JULY

IOWA OUTDOORS

SUNDAY

MONDAY

TUESDAY

WEDNESDAY

THURSDAY

FRIDAY

SATURDAY



A prairie at Whitewater Canyon Wildlife Area shared by Jackson and Dubuque counties just east of Cascade.
—BY TONY MOLINE

July is peak nesting time for goldfinch, the state bird

Turkey brood survey begins through early August

Cut cooling bills—close curtains on sunny sides of house



1

2

3

4

5

6

7



8

9

Independence Day

Save fuel by checking vehicle tire pressure

Cool off at Maquoketa Caves State Park

10

11

12

13

14



15

16

Take kids hiking to look for fawns with doe

Outdoor Journey for Girls at Hickory Hills near Dysart, July 12-14 iowadnr.gov/camps.html

Fourth annual Christmas in July at Backbone State Park in Delaware County through Saturday

Dogs allowed back on state-owned game management areas

17

18

19

20

21

22



23

American Wilderness Leadership School, Springbrook Conservation Education Center, July 18-22, 641-747-8383 or iowadnr.gov/camps.html

Eighty percent of game fish can be found in 20 percent of a stream; move often to find fish.

Take kids streamwalking

24

25

26

27

28

29



30

2010 Lake Delhi Dam fails on Maquoketa River after 10-13 inch rainfall within 24 hours

1936 State record high temperature set in Atlantic and Logan at 117 degrees.

Hunting and Conservation Camp for Boys, Springbrook Conservation Education Center, July 27-29 641-747-8383 or iowadnr.gov/camps.html

Search prairies for blazing stars in bloom

Low stream flows; catfishing easiest in streams using cheese baits

31

JUNE

S	M	T	W	T	F	S
			1	2	3	4
5	6	7	8	9	10	11
12	13	14	15	16	17	18
19	20	21	22	23	24	25
26	27	28	29	30		

AUGUST

S	M	T	W	T	F	S
	1	2	3	4	5	6
7	8	9	10	11	12	13
14	15	16	17	18	19	20
21	22	23	24	25	26	27
28	29	30	31			



2011 AUGUST

IOWA OUTDOORS

SUNDAY

MONDAY

TUESDAY

WEDNESDAY

THURSDAY

FRIDAY

SATURDAY

1

2

3

4

5

6

August roadside survey begins
Dove and duck banding begins

Ramadan Begins
Federal waterfowl seasons are issued.
State Forest Nursery begins accepting
seedling orders for spring planting.

Watch for muskrats building huts
and storing food

Shorebirds begin migrating south.
Outdoor Journey for Girls at Springbrook
Conservation Education Center, August 3-5.

7

Watch skies for swallows in large flocks.

8

1915 Last log raft used by the lumber
industry seen in Dubuque

9

Perseid meteor shower peaks later this week
on Aug. 12-13

10

Hummingbirds prepare for migration
by using feeders for the next 3-4 weeks

11

Waterfowl seasons presented to
Iowa Natural Resource Commission
Iowa State Fair begins

12

Visit the Nature Store at the DNR Build-
ing during the state fair for great deals
Aug. 11-21

13

1867 Hordes of grasshoppers
reported in western Iowa

14

Deer tags on sale tomorrow

15

Private cost-share REAP grant submittal
deadline for city and county conservation
REAP grants 4:30 p.m.

16

1963 Dutch Elm disease blamed
for the deaths of thousands of trees in Iowa

17

18

19

20

1804 The only death on the Lewis
and Clark Expedition occurs in Iowa
1950 Earliest freeze record set across northern
Iowa with 30° F in Britt and Sibley.

21

Iowa State Fair ends

22

Deer start to shed antler velvet; fawns start
to lose spots.

23

Blue-winged teal and doves congregating
for migration

24

1916 National Park Service established
by U.S. Congress

25

26

27

28

Pelican migration begins. Watch for flocks
on reservoirs and large lakes.

29

30

31

Locust songs peak during August



A female giant swallowtail
(*Papilio cresphontes*)
sips nectar from wood phlox.
—BY RON HUELSE

JULY

S	M	T	W	T	F	S
					1	2
3	4	5	6	7	8	9
10	11	12	13	14	15	16
17	18	19	20	21	22	23
24	25	26	27	28	29	30
31						

SEPTEMBER

S	M	T	W	T	F	S
				1	2	3
4	5	6	7	8	9	10
11	12	13	14	15	16	17
18	19	20	21	22	23	24
25	26	27	28	29	30	



2011 SEPTEMBER

IOWA OUTDOORS

SUNDAY

MONDAY

TUESDAY

WEDNESDAY

THURSDAY

FRIDAY

SATURDAY

				1	2	3
		Squirrels start cutting acorns from trees	REAP education grants due Nov. 1, www.iowareap.com			1890 The Morrison Electric auto introduced to Iowans in a parade in Des Moines Rabbit and squirrel seasons open
4	5	6	7	8	9	10
Take a family outing to view monarchs as they congregate for migration to Mexico	Labor Day		1953 Old Oscar, the 5-foot, 100-plus pound giant lake sturgeon always on display at the Iowa State Fair, dies		Plant conifers Sept. 10-30	
11	12	13	14	15	16	17
Patriot Day	Neotropical birds start to head south through end of month	Take a child to the woods to watch squirrels, bluejays and chipmunks caching acorns		Fall colors begin in northern Iowa	1881 Earliest measurable snowfall set with 6-inch snowfall in western Iowa	1950 Ding Darling, famed cartoonist and conservationist, helps open Lake Darling State Park near Washington Youth/disabled hunter season begins
18	19	20	21	22	23	24
1926 Unofficial one-day precipitation record set with 21.70-inch rain in Boyden	Wood duck migration begins			Fall colors begin in southern Iowa	Autumnal equinox - first day of autumn	Clad your kids in buckskin and head to the Ft. Atkinson Rendezvous held through Sunday in Winneshiek County
25	26	27	28	29	30	
First killing frost averages this date in extreme northern Iowa		1909 Earthquake felt in eastern Iowa	1953 Iowa's latest official 100°F temperature day with 103°F at Glenwood		Peak season camping fees end	REAP Assemblies held through October, check www.iowareap.com for dates and locations.



Deer and turkey pause before the upcoming hunting season.
-BY RON HUELSE



Keokuk ROCKS!

Hunt Keokuk Geodes...
Fun for the entire family!

KEOKUKIOWATOURISM.ORG
800-383-1219

Make It Home
KEOKUK
IOWA



AUGUST

S	M	T	W	T	F	S
	1	2	3	4	5	6
7	8	9	10	11	12	13
14	15	16	17	18	19	20
21	22	23	24	25	26	27
28	29	30	31			

OCTOBER

S	M	T	W	T	F	S
						1
2	3	4	5	6	7	8
9	10	11	12	13	14	15
16	17	18	19	20	21	22
23	24	25	26	27	28	29
30	31					



WYOMING

2011 OCTOBER

IOWA OUTDOORS

SUNDAY

MONDAY

TUESDAY

WEDNESDAY

THURSDAY

FRIDAY

SATURDAY



Fall color along Mississippi River at scenic overlook south of Guttenberg in Clayton County.
-BY CLAY SMITH

2



3

4

5

6

7

8

Youth/disabled deer season ends

1838 Chief Black Hawk dies at his home in Davis County

Quail form into coveys

Compost instead of burning leaves

Save money and energy—use programmable thermostats

Lacey Keosauqua State Park Scenic Drive Festival this weekend, 319-293-3502

9

10



11

12

13

14

15

3rd Annual Arts & Crafts Show 10 a.m.-4 p.m. Honey Creek Resort 877-677-3344

Fall turkey gun bow season begins.
Columbus Day

Fall colors peak Oct. 12-20

Plant broadleaf trees mid-October until the ground freezes

Get your "Hunt Iowa" blaze orange hat at www.iowanaturestore.com or 1-866-410-0230

Early muzzleloader deer season begins

16

17

18



19

20

21

22

Squirrels begin building leaf nests

First killing frost averages this date in extreme southeast Iowa

Youth pheasant season, Oct. 22-23

23

24

25



26

27

28

29

Early muzzleloader deer season closes

1949 Effigy Mounds National Monument designated by President Truman

1925 Earliest subzero temperature with -5°F at Little Sioux

Pheasant and quail seasons begin

30

31

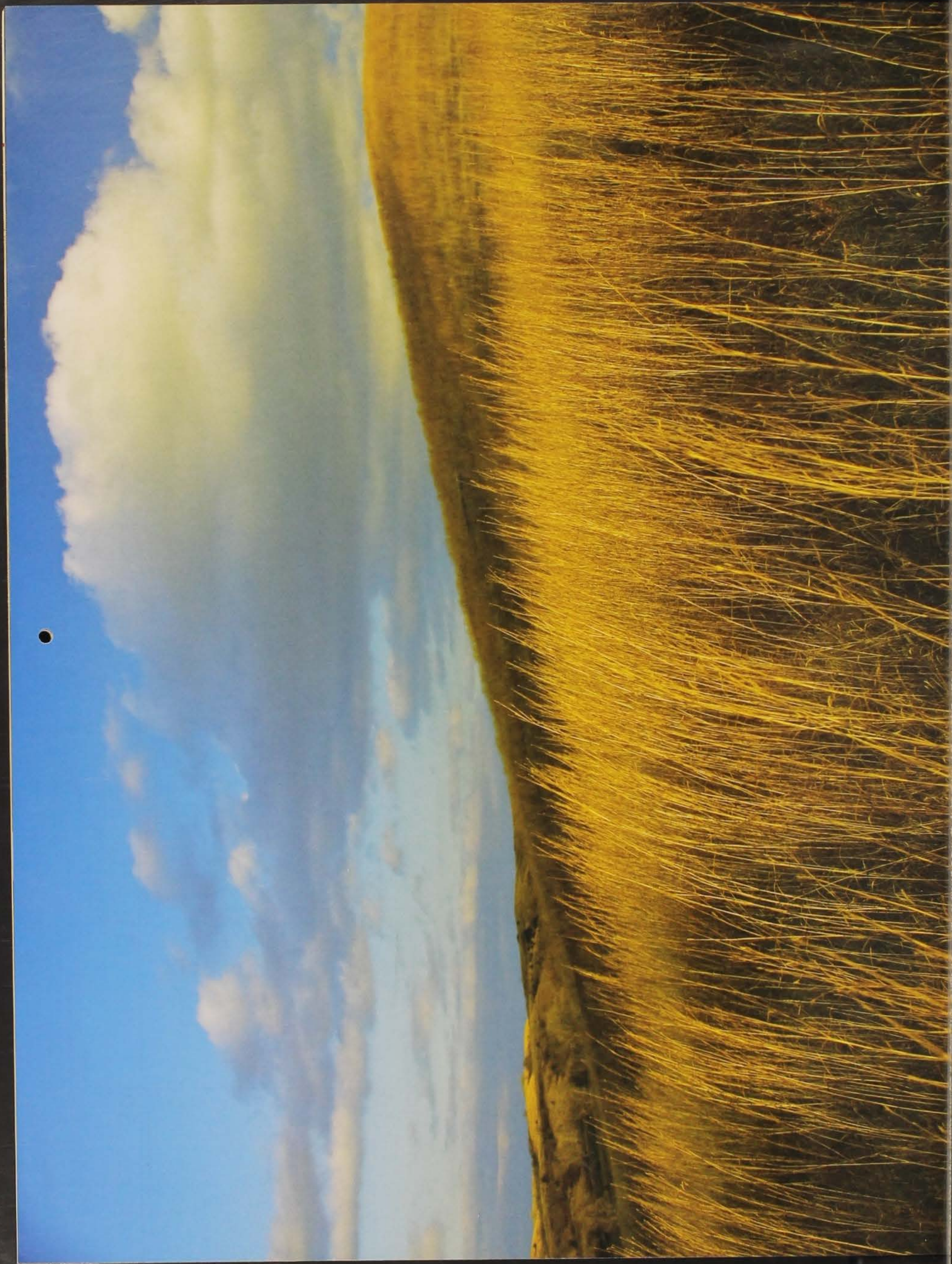
Halloween
1991 Halloween blizzard and ice storm last until Nov. 1, leave 16 inches of snow in northwest Iowa with 60 mph gusts. Catastrophic ice storm from Clarinda to Forest City followed by bitter cold.

SEPTEMBER

S	M	T	W	T	F	S
				1	2	3
4	5	6	7	8	9	10
11	12	13	14	15	16	17
18	19	20	21	22	23	24
25	26	27	28	29	30	

NOVEMBER

S	M	T	W	T	F	S
		1	2	3	4	5
6	7	8	9	10	11	12
13	14	15	16	17	18	19
20	21	22	23	24	25	26
27	28	29	30			



100%

100%

2011 NOVEMBER

IOWA OUTDOORS

SUNDAY	MONDAY	TUESDAY	WEDNESDAY	THURSDAY	FRIDAY	SATURDAY																																																																																				
		1	2	3	4	5																																																																																				
		All Saints' Day	Peak flights of duck migration	Turn in poachers to TIP Hotline: 1-800-532-2020 or iowadnr.gov		Furbearer hunting and trapping seasons begin																																																																																				
6	7	8	9	10	11	12																																																																																				
Daylight saving time ends	Peak of the deer rut				Veterans Day 1940 Armistice Day blizzard kills duck hunters along Mississippi River, totalling 160 lives across the Midwest.	Save energy by replacing furnace filter.																																																																																				
13	14	15	16	17	18	19																																																																																				
				Leonid meteor shower Nov. 17-18	Mentored Outdoor Experience deer hunt, Springbrook Conservation Education Center, Nov. 18-20																																																																																					
20	21	22	23	24	25	26																																																																																				
				Thanksgiving Day	November antlerless deer season begins	Take a family outing to watch eagles along rivers																																																																																				
27	28	29	30																																																																																							
	Give Iowa Outdoors as a holiday gift. Order at 1-800-361-8072.																																																																																									
	Broken Kettle, Iowa's largest contiguous native prairie just north of Sioux City in Plymouth County. -BY TY SMEDES				OCTOBER <table> <tr><th>S</th><th>M</th><th>T</th><th>W</th><th>T</th><th>F</th><th>S</th></tr> <tr><td>2</td><td>3</td><td>4</td><td>5</td><td>6</td><td>7</td><td>8</td></tr> <tr><td>9</td><td>10</td><td>11</td><td>12</td><td>13</td><td>14</td><td>15</td></tr> <tr><td>16</td><td>17</td><td>18</td><td>19</td><td>20</td><td>21</td><td>22</td></tr> <tr><td>23</td><td>24</td><td>25</td><td>26</td><td>27</td><td>28</td><td>29</td></tr> <tr><td>30</td><td>31</td><td></td><td></td><td></td><td></td><td></td></tr> </table>	S	M	T	W	T	F	S	2	3	4	5	6	7	8	9	10	11	12	13	14	15	16	17	18	19	20	21	22	23	24	25	26	27	28	29	30	31						DECEMBER <table> <tr><th>S</th><th>M</th><th>T</th><th>W</th><th>T</th><th>F</th><th>S</th></tr> <tr><td></td><td></td><td></td><td></td><td>1</td><td>2</td><td>3</td></tr> <tr><td>4</td><td>5</td><td>6</td><td>7</td><td>8</td><td>9</td><td>10</td></tr> <tr><td>11</td><td>12</td><td>13</td><td>14</td><td>15</td><td>16</td><td>17</td></tr> <tr><td>18</td><td>19</td><td>20</td><td>21</td><td>22</td><td>23</td><td>24</td></tr> <tr><td>25</td><td>26</td><td>27</td><td>28</td><td>29</td><td>30</td><td>31</td></tr> </table>	S	M	T	W	T	F	S					1	2	3	4	5	6	7	8	9	10	11	12	13	14	15	16	17	18	19	20	21	22	23	24	25	26	27	28	29	30	31
S	M	T	W	T	F	S																																																																																				
2	3	4	5	6	7	8																																																																																				
9	10	11	12	13	14	15																																																																																				
16	17	18	19	20	21	22																																																																																				
23	24	25	26	27	28	29																																																																																				
30	31																																																																																									
S	M	T	W	T	F	S																																																																																				
				1	2	3																																																																																				
4	5	6	7	8	9	10																																																																																				
11	12	13	14	15	16	17																																																																																				
18	19	20	21	22	23	24																																																																																				
25	26	27	28	29	30	31																																																																																				



2011 DECEMBER

IOWA OUTDOORS

SUNDAY

MONDAY

TUESDAY

WEDNESDAY

THURSDAY

FRIDAY

SATURDAY

1

2

3

Give Iowa Outdoors as a holiday gift—
order at 1-800-361-8072.

Order gifts from www.iowanaturestore.com
or 866-410-0230.

Fishing season closes on Mississippi River
below navigation dams 11-13
Muskie season closes on Iowa Great Lakes

Fall turkey gun/bow season closes
Archery only turkey and deer seasons close

First shotgun deer season opens

4

5

6

7

8

9

10

Pearl Harbor Remembrance Day
First shotgun deer season closes

Second shotgun deer season begins

11

12

13

14

15

16

17

Geminid meteor shower Dec. 13-14

Christmas bird count through end of December.

2012 hunting and fishing licenses go on sale.

18

19

20

21

22

23

24

Late split deer and fall turkey
bow season reopens
Second shotgun deer season closes
Late muzzleloader deer season begins

Hanukkah Begins

Winter solstice—first day of winter

Nonresident antlerless deer holiday season,
Dec. 24 – Jan. 2.

25

26

27

28

29

30

31

Christmas

Last day of Hanukkah

New Year's Eve
Ring in the New Year at Honey
Creek Resort. For event details
call 877-677-3344.



A blue jay (*Cyanocitta cristata*)
one of Iowa's year-round bird
inhabitants.

—BY RON HUELSE

NOVEMBER

S	M	T	W	T	F	S
		1	2	3	4	5
6	7	8	9	10	11	12
13	14	15	16	17	18	19
20	21	22	23	24	25	26
27	28	29	30			

JANUARY 2012

S	M	T	W	T	F	S
1	2	3	4	5	6	7
8	9	10	11	12	13	14
15	16	17	18	19	20	21
22	23	24	25	26	27	28
29	30	31				

State Library Of Iowa
State Documents Center
Miller Building
Des Moines, Iowa



DECEMBER 2010



JANUARY



FEBRUARY



MARCH



APRIL



MAY



JUNE



JULY



SEPTEMBER



OCTOBER



2011 AUGUST

IOWA
OUTDOORS

SUNDAY	MONDAY	TUESDAY	WEDNESDAY	THURSDAY	FRIDAY	SATURDAY
	1	2	3	4	5	6
7	8	9	10	11	12	13
14	15	16	17	18	19	20
21	22	23	24	25	26	27
28	29	30	31			

2011 CALENDAR

www.IOWAOUTDOORMAGAZINE.com



NOVEMBER



DECEMBER